

428 Gateway of the Great Temple at Baalbec



This pattern may not be copied, sold or in any other way handled in any way that violates the international copyright laws. If you get hold of this pattern (and or this document) in any other way than via a direct download from www.goldenkite.com or via a mail from us, you should report that to us at legal_actions@goldenkite.com .

Copyright ? 2003-, Golden Kite. All rights reserved.

Instructions

Thank you for choosing Golden Kite products!
We hope you will have lots of fun with this cross-stitch pattern!

Fabric

Press the fabric with an iron if needed. A good thing to prevent the fabric from fraying is to machine zigzag the edges.

It is easiest to start in the center of the design. To locate the center of the fabric, fold the fabric in half both vertically and horizontally. The center is located where these two folds meet.

Stitches

Each length of DMC thread consists of six strands.

Use two of these strands for all stitches.

Note that some colors may be mixes (or blends) between two different pure colors. In that case take one strand of the two colors each and thread the two strands into the needle at the same time for stitching.

All stitches are full cross-stitches. No half-stitching and no back-stitching is necessary in this pattern.

All cross-stitches will be worked into the holes in the fabric from left to right. Always use the larger holes in the fabric for the stitches. Adjacent stitches should meet in the same hole. Make sure all stitches cross in the same direction.

Please be careful when washing the finished embroidery! The cotton thread may bleed when washed. Only hand wash it in lukewarm water. Remove excess water by roll it in a towel and lay it flat to air dry. Natural fabrics may shrink slightly when washed. We do not recommend washing the embroidery if not absolutely necessary and we take no responsibility for any damage that may occur.

When you start using this product you agree that Golden Kite (Golden K), or any people working for or in association with Golden Kite (Golden K), cannot be set responsible for any physical, mental, economical or other type of damage caused by this product (including this document, pattern, threads, needles and any other parts received by you from Golden Kite (Golden K)).

This pattern may not be copied, sold or in any other way handled in any way that violates the international copyright laws. If you get hold of this pattern (and or this document) in any other way than via a direct download from www.goldenkite.com or via a mail from us, you should report that to us at legal_actions@goldenkite.com .

Gateway of the Great Temple at Baalbec

Stitch Count	
Horizontal:	300
Vertical:	358

Recommended Fabric Color
Antique White

This table tells the size of the pattern (without any margins) and the size of the fabric required to stitch the pattern (including recommended margins). 3 inch margins have been added on each side in the 'Including Margins' row.

The sizes are given for 14, 16 and 18 stitches per inch fabrics.

Make sure to use the 'Including Margins' row when cutting the piece of fabric to be used. Also make sure that 3 inch margins are enough for your stitching technique and add more margin areas if necessary.

	14				16				18			
	Width		Height		Width		Height		Width		Height	
	cm	inch	cm	inch	cm	inch	cm	inch	cm	inch	cm	inch
Pattern:	55	21.37	65	25.55	48	18.7	57	22.35	43	16.625	51	19.875
Including Margins:	71	28	81	32	64	25	73	29	59	23	67	26
	10				12				24			
	Width		Height		Width		Height		Width		Height	
	cm	inch	cm	inch	cm	inch	cm	inch	cm	inch	cm	inch
Pattern:	77	29.91	91	35.77	64	24.93	75	29.8	32	12.46	37	14.9
Including Margins:	93	36	107	42	80	31	91	36	48	19	53	21
	25				26				27			
	Width		Height		Width		Height		Width		Height	
	cm	inch	cm	inch	cm	inch	cm	inch	cm	inch	cm	inch
Pattern:	30	11.96	36	14.3	29	11.5	35	13.75	28	11.08	33	13.24
Including Margins:	46	18	52	21	45	18	51	20	44	18	49	20
	28				30				32			
	Width		Height		Width		Height		Width		Height	
	cm	inch	cm	inch	cm	inch	cm	inch	cm	inch	cm	inch
Pattern:	27	10.68	32	12.77	25	9.97	30	11.92	24	9.34	28	11.17
Including Margins:	43	17	48	19	41	16	46	18	40	16	44	18

Solid Color Stitches. Use two strands of the specified color for these stitches.		
Symbol	DMC	Name
•	1	White 1
✿	301	Mahogany-MD
✱	356	Terra Cotta-MD
☉	370	Mustard-MD
卅	371	Mustard
⇒	422	Hazelnut Brown-LT
☉	435	Brown-VY LT
↗	436	Tan
⌘	437	Tan-LT
⌘	453	Shell Gray-LT
■	500	Blue Green-VY DK
↓	610	Drab Brown-DK
☆	611	Drab Brown
✧	612	Drab Brown-LT
➔	632	Desert Sand-UL VY DK
☉	640	Beige Gray-VY DK
☉	642	Beige Gray-DK
⌘	676	Old Gold-LT
✱	738	Tan-VY LT
//	739	Tan-UL VY LT
☉	745	Yellow-LT Pale
⌘	746	Off White
☉	747	Sky Blue-VY LT
☉	762	Pearl Gray-VY LT
◇	775	Baby Blue-VY LT
⌘	800	Delft Blue-Pale

☉	822	Beige Gray-LT
✱	830	Golden Olive-DK
☉	838	Beige Brown-VY DK
☉	839	Beige Brown-DK
✱	841	Beige Brown-LT
✱	869	Hazelnut Brown-VY DK
☉	921	Copper
♥	935	Avocado Green-DK
☉	938	Coffee Brown-UL DK
☉	945	Tawny
☉	977	Golden Brown-LT
✱	3021	Brown Gray-VY DK
☉	3045	Yellow Beige-DK
☉	3046	Yellow Beige-MD
	3078	Golden Yellow-VY LT
☉	3371	Black Brown
☉	3743	Antique Violet-VY LT
☉	3776	Mahogany-LT
☉	3781	Mocha Brown-DK
☉	3823	Yellow-UL Pale
✱	3825	Pumpkin-Pale
☉	3828	Hazelnut Brown
☉	3840	Lavender Blue-LT
★	3854	Autumn Gold-MD
☉	3855	Autumn Gold-LT
☉	3862	Mocha Beige-DK
☉	3863	Mocha Beige-MD
☉	3864	Mocha Beige-LT
☉	3865	Winter White

Blend Stitches. Use one strand of each of DMC1 and DMC2 for these stitches.

Symbol	DMC1	Name1	DMC2	Name2
1	1	White 1	3865	Winter White
⤵	3865	Winter White	747	Sky Blue-VY LT
⤵	747	Sky Blue-VY LT	3761	Sky Blue-LT
III	3840	Lavender Blue-LT	3761	Sky Blue-LT
⤵	747	Sky Blue-VY LT	1	White 1
Z	747	Sky Blue-VY LT	3840	Lavender Blue-LT
●	935	Avocado Green-DK	3371	Black Brown
☼	938	Coffee Brown-UL DK	3021	Brown Gray-VY DK
◆	3781	Mocha Brown-DK	3021	Brown Gray-VY DK
←	3781	Mocha Brown-DK	610	Drab Brown-DK
↑	610	Drab Brown-DK	3021	Brown Gray-VY DK
▼	3862	Mocha Beige-DK	611	Drab Brown
↓	3799	Pewter Gray-VY DK	3021	Brown Gray-VY DK
○	3799	Pewter Gray-VY DK	935	Avocado Green-DK
I	371	Mustard	611	Drab Brown
+	3863	Mocha Beige-MD	435	Brown-VY LT
↖	610	Drab Brown-DK	611	Drab Brown
☉	3781	Mocha Brown-DK	611	Drab Brown
↗	422	Hazelnut Brown-LT	3046	Yellow Beige-MD
⌘	422	Hazelnut Brown-LT	3045	Yellow Beige-DK
#	3825	Pumpkin-Pale	676	Old Gold-LT
↑	3855	Autumn Gold-LT	945	Tawny
↔	738	Tan-VY LT	945	Tawny
✱	3864	Mocha Beige-LT	422	Hazelnut Brown-LT
⊕	3864	Mocha Beige-LT	612	Drab Brown-LT
♠	371	Mustard	640	Beige Gray-VY DK
†	413	Pewter Gray-DK	611	Drab Brown
9	3823	Yellow-UL Pale	746	Off White
+	3828	Hazelnut Brown	3863	Mocha Beige-MD
▲	3862	Mocha Beige-DK	3863	Mocha Beige-MD
▲	413	Pewter Gray-DK	3021	Brown Gray-VY DK
♣	413	Pewter Gray-DK	610	Drab Brown-DK
⊕	632	Desert Sand-UL VY DK	301	Mahogany-MD
☞	838	Beige Brown-VY DK	839	Beige Brown-DK
Φ	977	Golden Brown-LT	921	Copper
☼	3776	Mahogany-LT	900	Burnt Orange-DK
●	500	Blue Green-VY DK	3799	Pewter Gray-VY DK
⊗	3371	Black Brown	938	Coffee Brown-UL DK
⦿	435	Brown-VY LT	301	Mahogany-MD
☼	640	Beige Gray-VY DK	610	Drab Brown-DK

This table specifies how much thread of each color is required to stitch this pattern. It is good to know that one complete DMC skein contains 313 inches (795 cm) thread.

DMC	Name	Usage (cm)	Usage (inch)	Usage (cm)	Usage (inch)	Usage (cm)	Usage (inch)
		14		16		18	
1	White 1	183	72	174	68	157	61
301	Mahogany-MD	22	8	21	8	19	7
356	Terra Cotta-MD	18	7	17	6	15	5
370	Mustard-MD	191	75	182	71	164	64
371	Mustard	665	261	634	249	570	224
413	Pewter Gray-DK	328	129	312	122	281	110
422	Hazelnut Brown-LT	1544	607	1471	579	1324	521
435	Brown-VY LT	179	70	170	66	153	60
436	Tan	71	27	68	26	61	24
437	Tan-LT	152	59	145	57	130	51
453	Shell Gray-LT	12	4	11	4	10	3
500	Blue Green-VY DK	455	179	433	170	390	153
610	Drab Brown-DK	2891	1138	2753	1083	2478	975
611	Drab Brown	1935	761	1843	725	1659	653
612	Drab Brown-LT	557	219	530	208	477	187
632	Desert Sand-UL VY DK	53	20	51	20	45	17
640	Beige Gray-VY DK	339	133	323	127	291	114
642	Beige Gray-DK	20	7	19	7	17	6
676	Old Gold-LT	486	191	462	181	416	163
738	Tan-VY LT	347	136	331	130	298	117
739	Tan-UL VY LT	45	17	43	16	38	14
745	Yellow-LT Pale	833	327	793	312	714	281
746	Off White	398	156	379	149	341	134
747	Sky Blue-VY LT	217	85	206	81	186	73
762	Pearl Gray-VY LT	11	4	11	4	10	3
775	Baby Blue-VY LT	5	1	5	1	5	1
800	Delft Blue-Pale	13	5	13	5	11	4
822	Beige Gray-LT	11	4	11	4	10	3
830	Golden Olive-DK	46	18	44	17	40	15
838	Beige Brown-VY DK	124	48	118	46	106	41
839	Beige Brown-DK	70	27	67	26	60	23
841	Beige Brown-LT	17	6	16	6	14	5
869	Hazelnut Brown-VY DK	60	23	57	22	51	20
900	Burnt Orange-DK	4	1	4	1	3	1
921	Copper	14	5	13	5	12	4
935	Avocado Green-DK	959	377	914	359	822	323
938	Coffee Brown-UL DK	1245	490	1186	466	1067	420
945	Tawny	448	176	426	167	384	151
977	Golden Brown-LT	13	5	12	4	11	4
3021	Brown Gray-VY DK	3641	1433	3467	1364	3120	1228
3045	Yellow Beige-DK	1099	432	1047	412	942	370
3046	Yellow Beige-MD	762	300	726	285	653	257
3078	Golden Yellow-VY LT	679	267	646	254	582	229
3371	Black Brown	1985	781	1891	744	1702	670
3743	Antique Violet-VY LT	9	3	9	3	8	3
3761	Sky Blue-LT	32	12	30	11	27	10
3776	Mahogany-LT	11	4	11	4	10	3
3781	Mocha Brown-DK	2097	825	1997	786	1797	707
3799	Pewter Gray-VY DK	488	192	465	183	418	164
3823	Yellow-UL Pale	712	280	678	266	610	240
3825	Pumpkin-Pale	81	31	77	30	69	27
3828	Hazelnut Brown	612	240	583	229	525	206
3840	Lavender Blue-LT	129	50	123	48	111	43

3854	Autumn Gold-MD	9	3	8	3	7	2
3855	Autumn Gold-LT	879	346	838	329	754	296
3862	Mocha Beige-DK	999	393	951	374	856	337
3863	Mocha Beige-MD	734	288	699	275	629	247
3864	Mocha Beige-LT	228	89	217	85	195	76
3865	Winter White	112	44	107	42	96	37

Extended thread usage table.							
DMC	Name	Usage (cm)	Usage (inch)	Usage (cm)	Usage (inch)	Usage (cm)	Usage (inch)
		10		12		24	
1	White 1	283	110	236	92	118	46
301	Mahogany-MD	34	13	29	11	14	5
356	Terra Cotta-MD	27	9	23	8	11	4
370	Mustard-MD	295	115	246	96	123	48
371	Mustard	1026	403	855	336	428	168
413	Pewter Gray-DK	506	198	422	165	211	83
422	Hazelnut Brown-LT	2383	938	1986	782	993	391
435	Brown-VY LT	275	108	230	90	115	45
436	Tan	110	43	92	36	46	18
437	Tan-LT	234	92	195	77	98	38
453	Shell Gray-LT	18	5	15	5	8	2
500	Blue Green-VY DK	702	275	585	230	293	115
610	Drab Brown-DK	4460	1755	3717	1463	1859	731
611	Drab Brown	2986	1175	2489	980	1244	490
612	Drab Brown-LT	859	337	716	281	358	140
632	Desert Sand-UL VY DK	81	31	68	26	34	13
640	Beige Gray-VY DK	524	205	437	171	218	86
642	Beige Gray-DK	31	11	26	9	13	5
676	Old Gold-LT	749	293	624	245	312	122
738	Tan-VY LT	536	211	447	176	224	88
739	Tan-UL VY LT	68	25	57	21	29	11
745	Yellow-LT Pale	1285	506	1071	422	536	211
746	Off White	614	241	512	201	256	101
747	Sky Blue-VY LT	335	131	279	110	140	55
762	Pearl Gray-VY LT	18	5	15	5	8	2
775	Baby Blue-VY LT	9	2	8	2	4	1
800	Delft Blue-Pale	20	7	17	6	8	3
822	Beige Gray-LT	18	5	15	5	8	2
830	Golden Olive-DK	72	27	60	23	30	11
838	Beige Brown-VY DK	191	74	159	62	80	31
839	Beige Brown-DK	108	41	90	35	45	17
841	Beige Brown-LT	25	9	21	8	11	4
869	Hazelnut Brown-VY DK	92	36	77	30	38	15
900	Burnt Orange-DK	5	2	5	2	2	1
921	Copper	22	7	18	6	9	3
935	Avocado Green-DK	1480	581	1233	485	617	242
938	Coffee Brown-UL DK	1921	756	1601	630	800	315
945	Tawny	691	272	576	227	288	113
977	Golden Brown-LT	20	7	17	6	8	3
3021	Brown Gray-VY DK	5616	2210	4680	1842	2340	921
3045	Yellow Beige-DK	1696	666	1413	555	707	278
3046	Yellow Beige-MD	1175	463	980	386	490	193
3078	Golden Yellow-VY LT	1048	412	873	344	437	172
3371	Black Brown	3064	1206	2553	1005	1277	503
3743	Antique Violet-VY LT	14	5	12	5	6	2
3761	Sky Blue-LT	49	18	41	15	20	8

3776	Mahogany-LT	18	5	15	5	8	2
3781	Mocha Brown-DK	3235	1273	2696	1061	1348	530
3799	Pewter Gray-VY DK	752	295	627	246	314	123
3823	Yellow-UL Pale	1098	432	915	360	458	180
3825	Pumpkin-Pale	124	49	104	41	52	20
3828	Hazelnut Brown	945	371	788	309	394	155
3840	Lavender Blue-LT	200	77	167	65	83	32
3854	Autumn Gold-MD	13	4	11	3	5	2
3855	Autumn Gold-LT	1357	533	1131	444	566	222
3862	Mocha Beige-DK	1541	607	1284	506	642	253
3863	Mocha Beige-MD	1132	445	944	371	472	185
3864	Mocha Beige-LT	351	137	293	114	146	57
3865	Winter White	173	67	144	56	72	28

Extended thread usage table.							
DMC	Name	Usage (cm)	Usage (inch)	Usage (cm)	Usage (inch)	Usage (cm)	Usage (inch)
		25		26		27	
1	White 1	113	44	109	42	105	41
301	Mahogany-MD	14	5	13	5	13	5
356	Terra Cotta-MD	11	4	10	3	10	3
370	Mustard-MD	118	46	114	44	109	43
371	Mustard	410	161	395	155	380	149
413	Pewter Gray-DK	202	79	195	76	187	73
422	Hazelnut Brown-LT	953	375	917	361	883	347
435	Brown-VY LT	110	43	106	42	102	40
436	Tan	44	17	42	17	41	16
437	Tan-LT	94	37	90	35	87	34
453	Shell Gray-LT	7	2	7	2	7	2
500	Blue Green-VY DK	281	110	270	106	260	102
610	Drab Brown-DK	1784	702	1716	675	1652	650
611	Drab Brown	1194	470	1149	452	1106	435
612	Drab Brown-LT	343	135	330	129	318	125
632	Desert Sand-UL VY DK	32	12	31	12	30	11
640	Beige Gray-VY DK	210	82	201	79	194	76
642	Beige Gray-DK	12	4	12	4	11	4
676	Old Gold-LT	300	117	288	113	277	109
738	Tan-VY LT	215	84	206	81	199	78
739	Tan-UL VY LT	27	10	26	10	25	9
745	Yellow-LT Pale	514	202	494	195	476	187
746	Off White	246	96	236	93	227	89
747	Sky Blue-VY LT	134	53	129	51	124	49
762	Pearl Gray-VY LT	7	2	7	2	7	2
775	Baby Blue-VY LT	4	1	3	1	3	1
800	Delft Blue-Pale	8	3	8	3	7	3
822	Beige Gray-LT	7	2	7	2	7	2
830	Golden Olive-DK	29	11	28	10	27	10
838	Beige Brown-VY DK	76	30	73	28	71	27
839	Beige Brown-DK	43	17	42	16	40	15
841	Beige Brown-LT	10	4	10	3	9	3
869	Hazelnut Brown-VY DK	37	14	35	14	34	13
900	Burnt Orange-DK	2	1	2	1	2	1
921	Copper	9	3	8	3	8	3
935	Avocado Green-DK	592	233	569	224	548	215
938	Coffee Brown-UL DK	768	302	739	291	711	280
945	Tawny	276	109	266	105	256	101
977	Golden Brown-LT	8	3	8	3	7	3

3021	Brown Gray-VY DK	2246	884	2160	850	2080	819
3045	Yellow Beige-DK	678	266	652	256	628	247
3046	Yellow Beige-MD	470	185	452	178	435	171
3078	Golden Yellow-VY LT	419	165	403	159	388	153
3371	Black Brown	1225	482	1178	464	1135	447
3743	Antique Violet-VY LT	6	2	6	2	5	2
3761	Sky Blue-LT	19	7	19	7	18	7
3776	Mahogany-LT	7	2	7	2	7	2
3781	Mocha Brown-DK	1294	509	1244	489	1198	471
3799	Pewter Gray-VY DK	301	118	289	114	279	109
3823	Yellow-UL Pale	439	173	422	166	407	160
3825	Pumpkin-Pale	50	19	48	19	46	18
3828	Hazelnut Brown	378	148	363	143	350	137
3840	Lavender Blue-LT	80	31	77	30	74	29
3854	Autumn Gold-MD	5	1	5	1	5	1
3855	Autumn Gold-LT	543	213	522	205	503	197
3862	Mocha Beige-DK	616	243	593	233	571	225
3863	Mocha Beige-MD	453	178	435	171	419	165
3864	Mocha Beige-LT	140	55	135	53	130	51
3865	Winter White	69	27	66	26	64	25

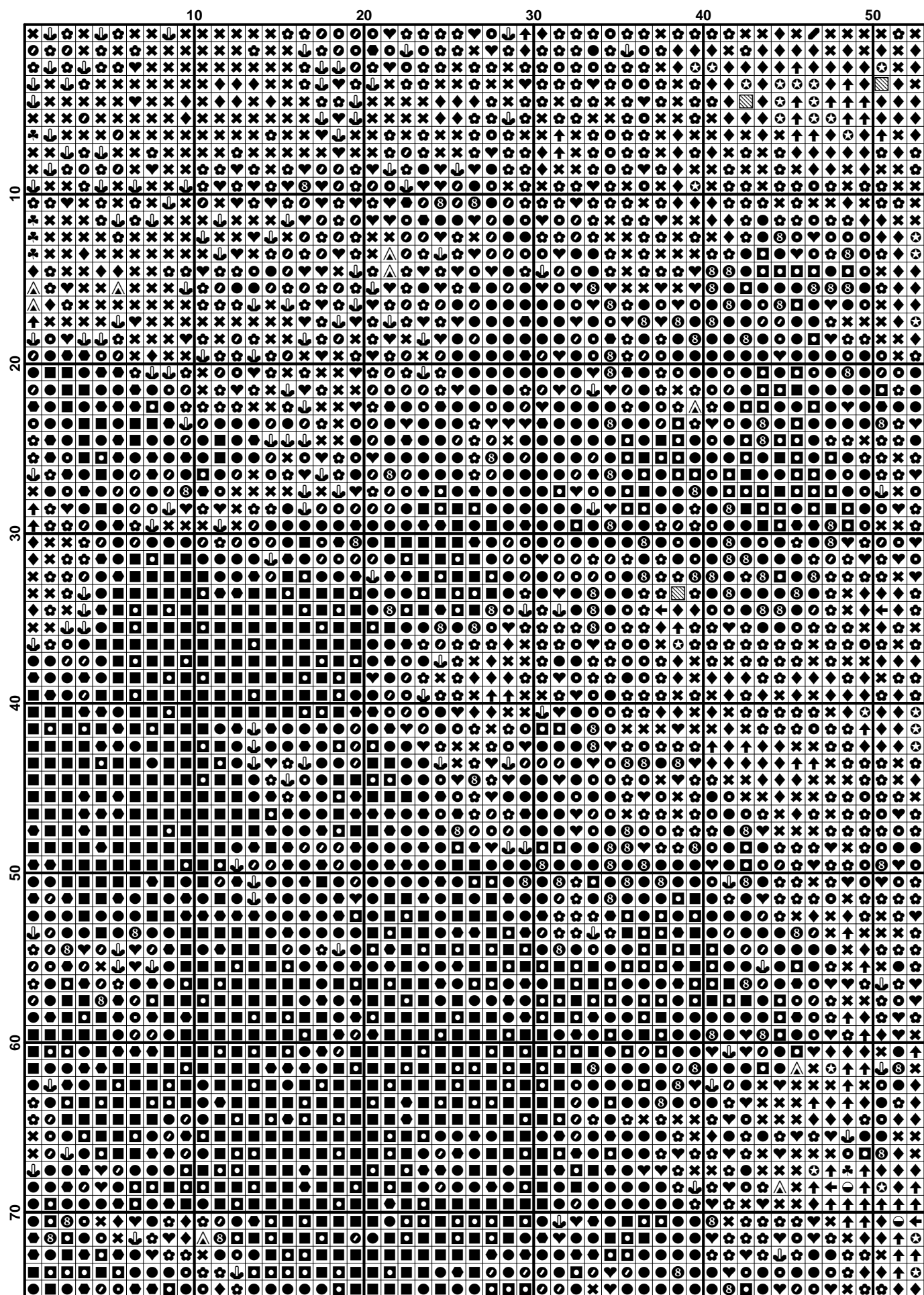
Extended thread usage table.							
DMC	Name	Usage (cm)	Usage (inch)	Usage (cm)	Usage (inch)	Usage (cm)	Usage (inch)
		28		30		32	
1	White 1	101	39	94	37	88	34
301	Mahogany-MD	12	5	11	4	11	4
356	Terra Cotta-MD	10	3	9	3	8	3
370	Mustard-MD	105	41	98	38	92	36
371	Mustard	366	144	342	134	321	126
413	Pewter Gray-DK	181	71	169	66	158	62
422	Hazelnut Brown-LT	851	335	794	313	745	293
435	Brown-VY LT	98	39	92	36	86	34
436	Tan	39	15	37	14	34	14
437	Tan-LT	84	33	78	31	73	29
453	Shell Gray-LT	6	2	6	2	6	2
500	Blue Green-VY DK	251	98	234	92	219	86
610	Drab Brown-DK	1593	627	1487	585	1394	548
611	Drab Brown	1067	420	995	392	933	367
612	Drab Brown-LT	307	120	286	112	268	105
632	Desert Sand-UL VY DK	29	11	27	10	25	10
640	Beige Gray-VY DK	187	73	175	68	164	64
642	Beige Gray-DK	11	4	10	4	10	3
676	Old Gold-LT	267	105	250	98	234	92
738	Tan-VY LT	192	75	179	70	168	66
739	Tan-UL VY LT	24	9	23	8	21	8
745	Yellow-LT Pale	459	181	428	169	402	158
746	Off White	219	86	205	80	192	75
747	Sky Blue-VY LT	120	47	112	44	105	41
762	Pearl Gray-VY LT	6	2	6	2	6	2
775	Baby Blue-VY LT	3	1	3	1	3	1
800	Delft Blue-Pale	7	3	7	2	6	2
822	Beige Gray-LT	6	2	6	2	6	2
830	Golden Olive-DK	26	10	24	9	23	8
838	Beige Brown-VY DK	68	26	64	25	60	23
839	Beige Brown-DK	39	15	36	14	34	13
841	Beige Brown-LT	9	3	8	3	8	3
869	Hazelnut Brown-VY DK	33	13	31	12	29	11

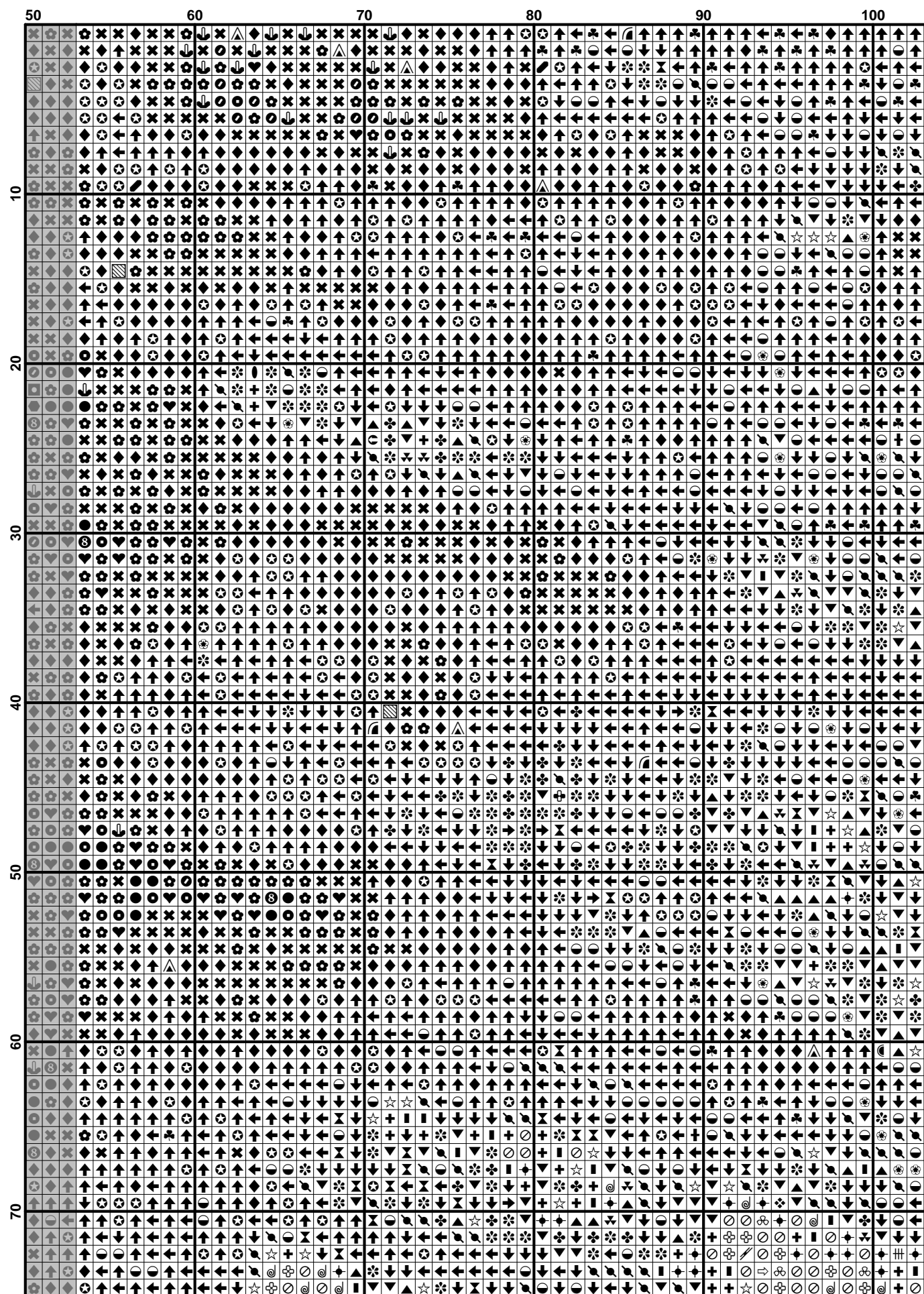
Copyright ? 2003-, Golden Kite (Golden K.)

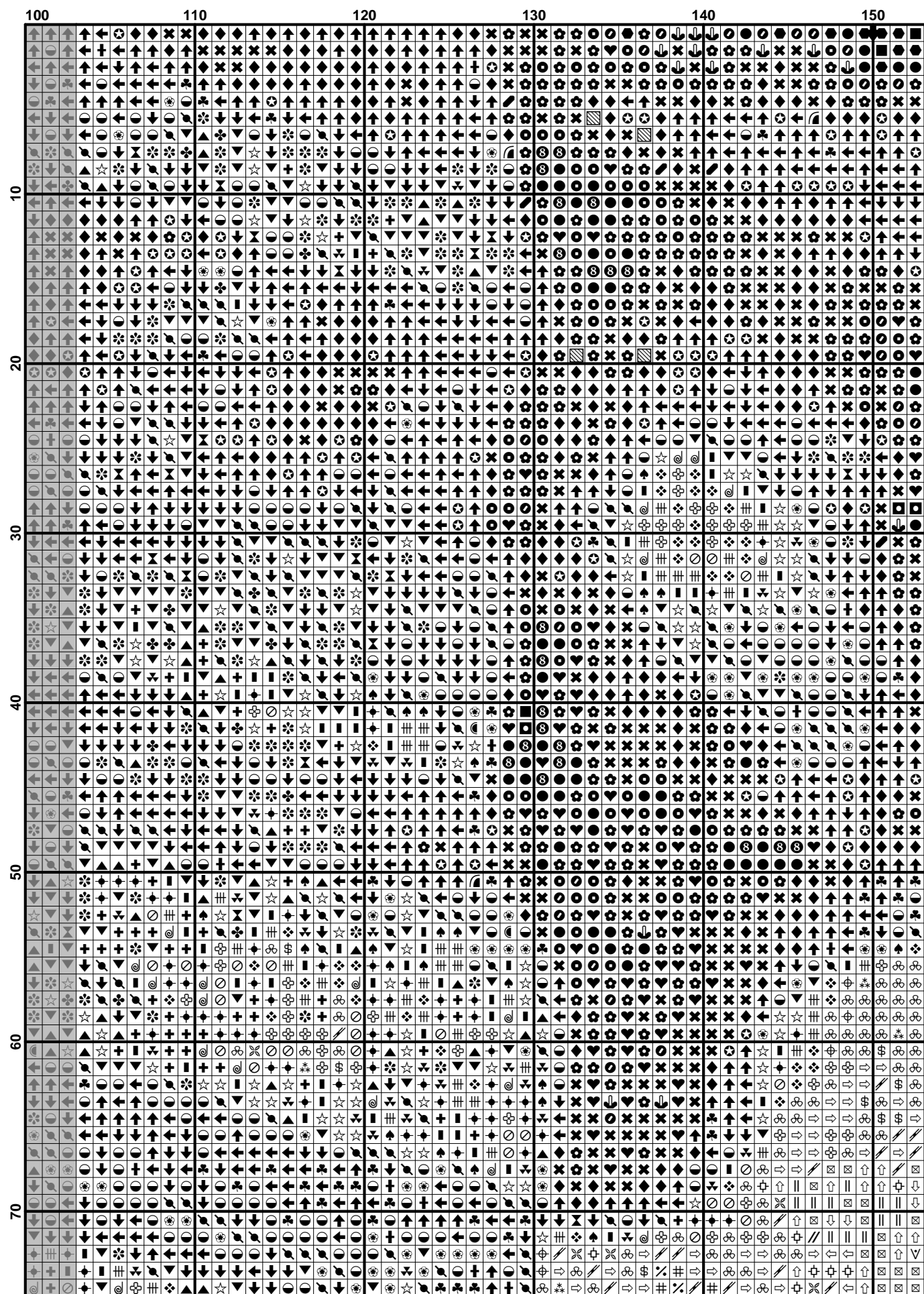
Internet: www.goldenkite.com

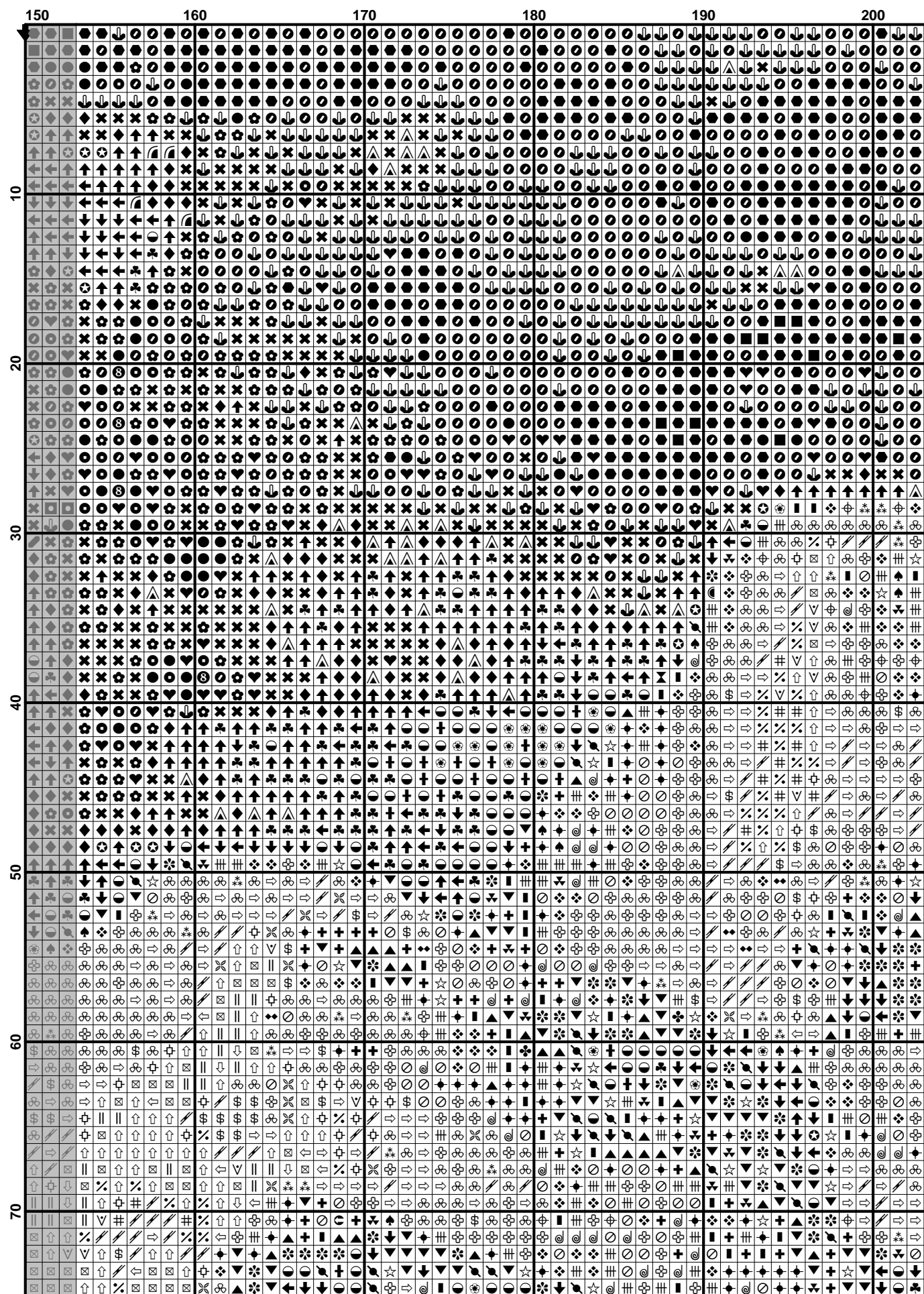
e-mail: info@goldenkite.com

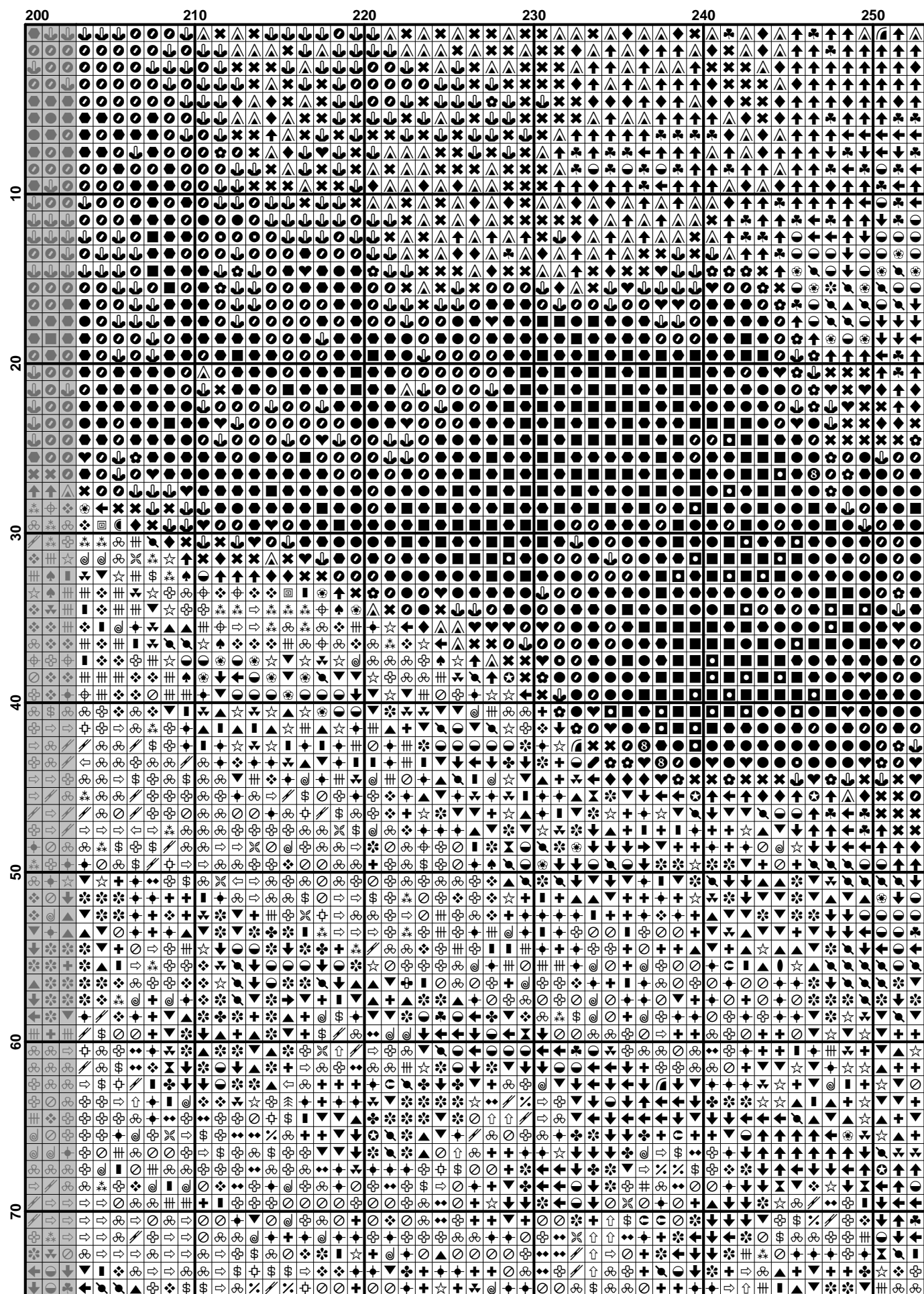
900	Burnt Orange-DK	2	1	2	1	2	1
921	Copper	8	3	7	2	7	2
935	Avocado Green-DK	528	208	493	194	462	182
938	Coffee Brown-UL DK	686	270	640	252	600	236
945	Tawny	247	97	230	91	216	85
977	Golden Brown-LT	7	3	7	2	6	2
3021	Brown Gray-VY DK	2006	789	1872	737	1755	691
3045	Yellow Beige-DK	606	238	565	222	530	208
3046	Yellow Beige-MD	420	165	392	154	367	145
3078	Golden Yellow-VY LT	374	147	349	137	327	129
3371	Black Brown	1094	431	1021	402	957	377
3743	Antique Violet-VY LT	5	2	5	2	5	2
3761	Sky Blue-LT	17	6	16	6	15	6
3776	Mahogany-LT	6	2	6	2	6	2
3781	Mocha Brown-DK	1155	455	1078	424	1011	398
3799	Pewter Gray-VY DK	269	105	251	98	235	92
3823	Yellow-UL Pale	392	154	366	144	343	135
3825	Pumpkin-Pale	44	17	41	16	39	15
3828	Hazelnut Brown	338	132	315	124	295	116
3840	Lavender Blue-LT	71	28	67	26	62	24
3854	Autumn Gold-MD	5	1	4	1	4	1
3855	Autumn Gold-LT	485	190	452	178	424	167
3862	Mocha Beige-DK	550	217	514	202	482	190
3863	Mocha Beige-MD	404	159	377	148	354	139
3864	Mocha Beige-LT	125	49	117	46	110	43
3865	Winter White	62	24	58	22	54	21

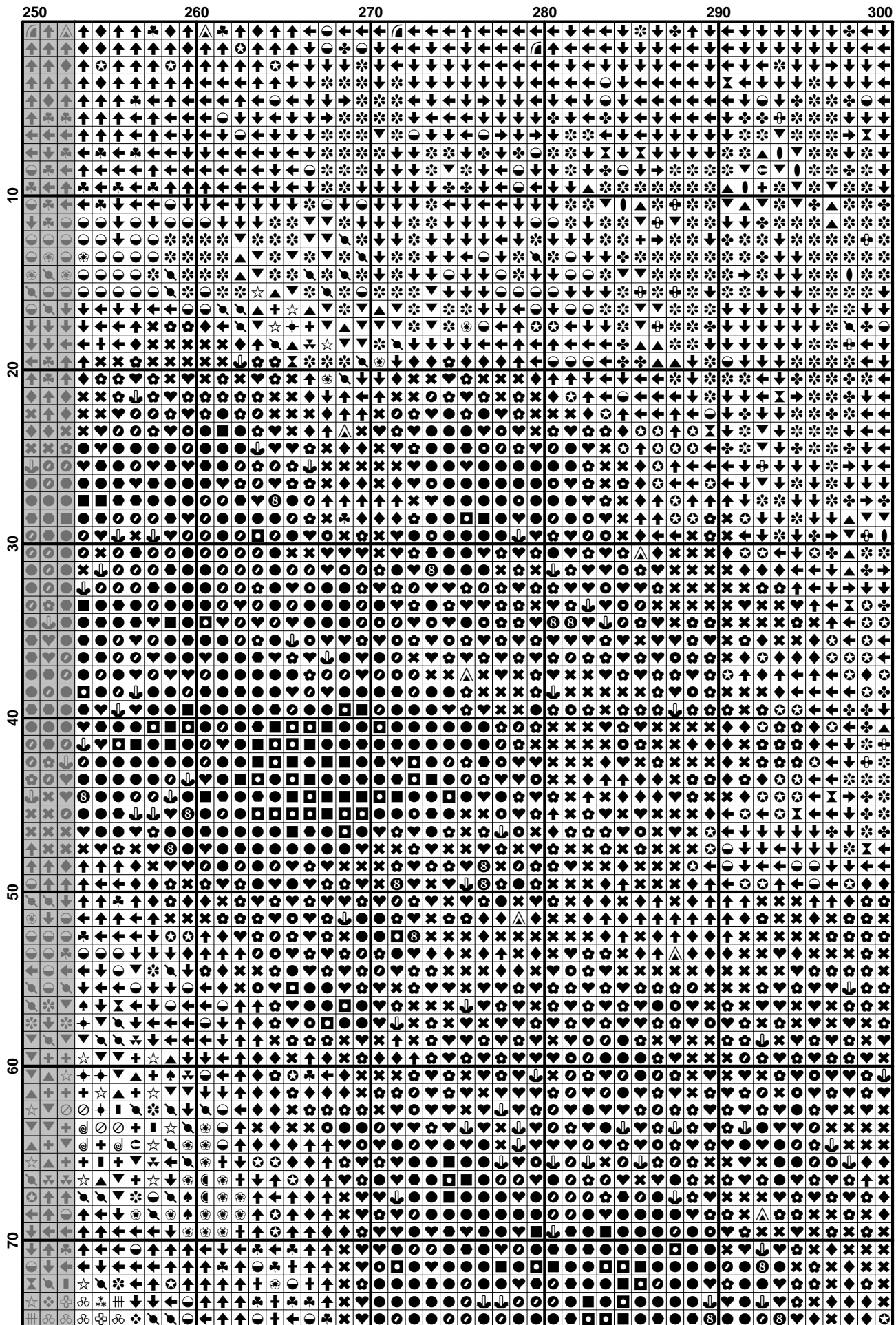


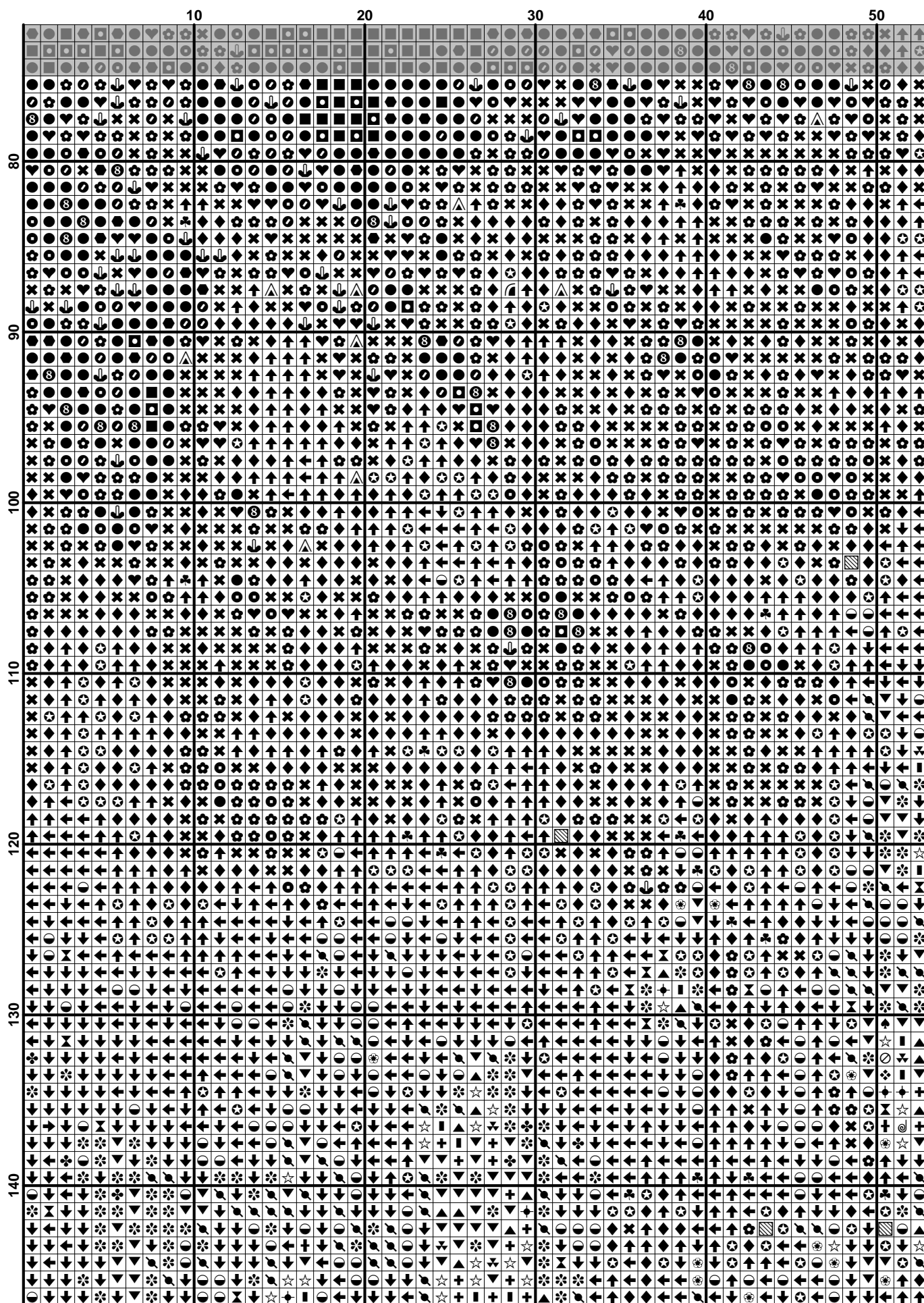




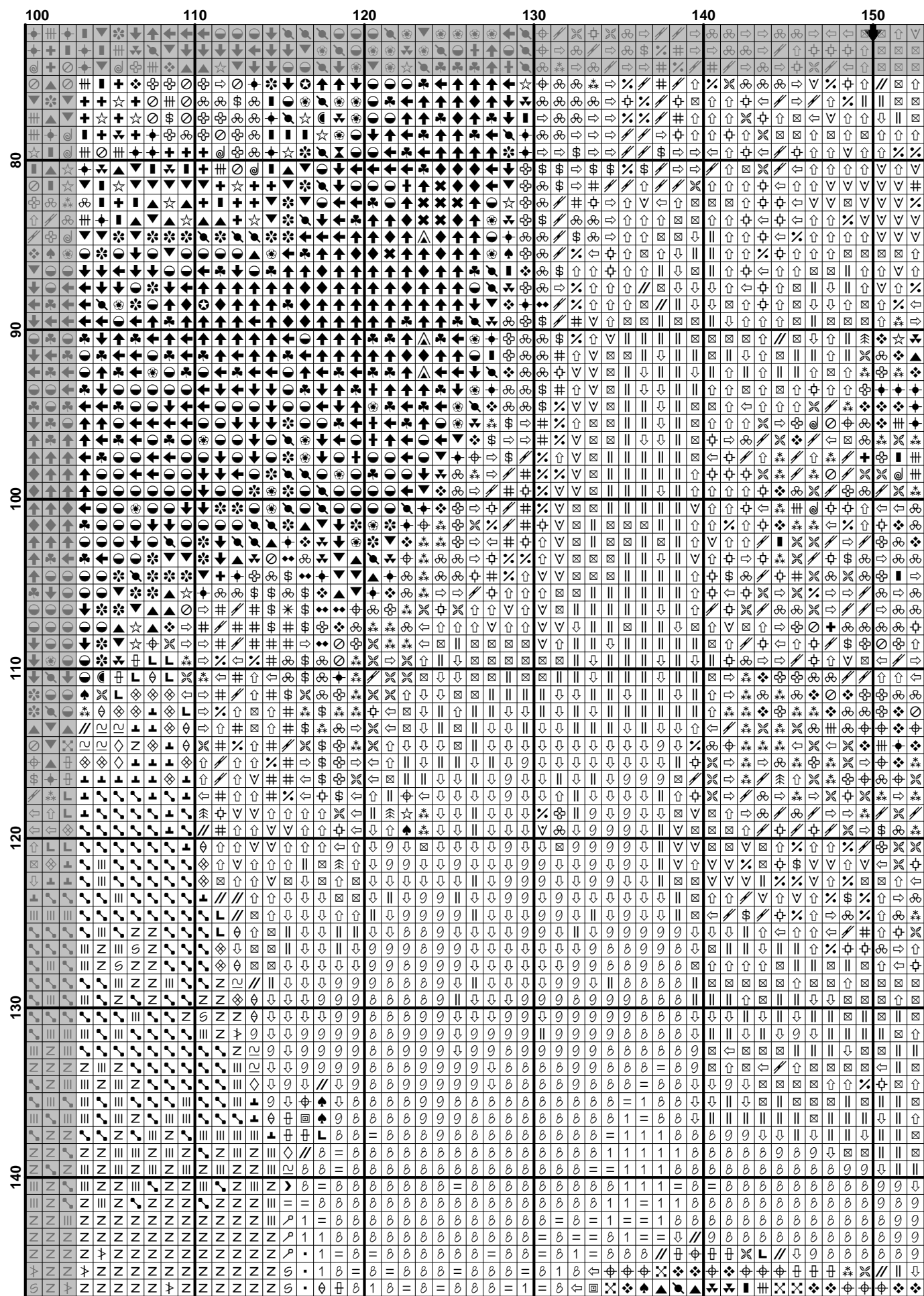


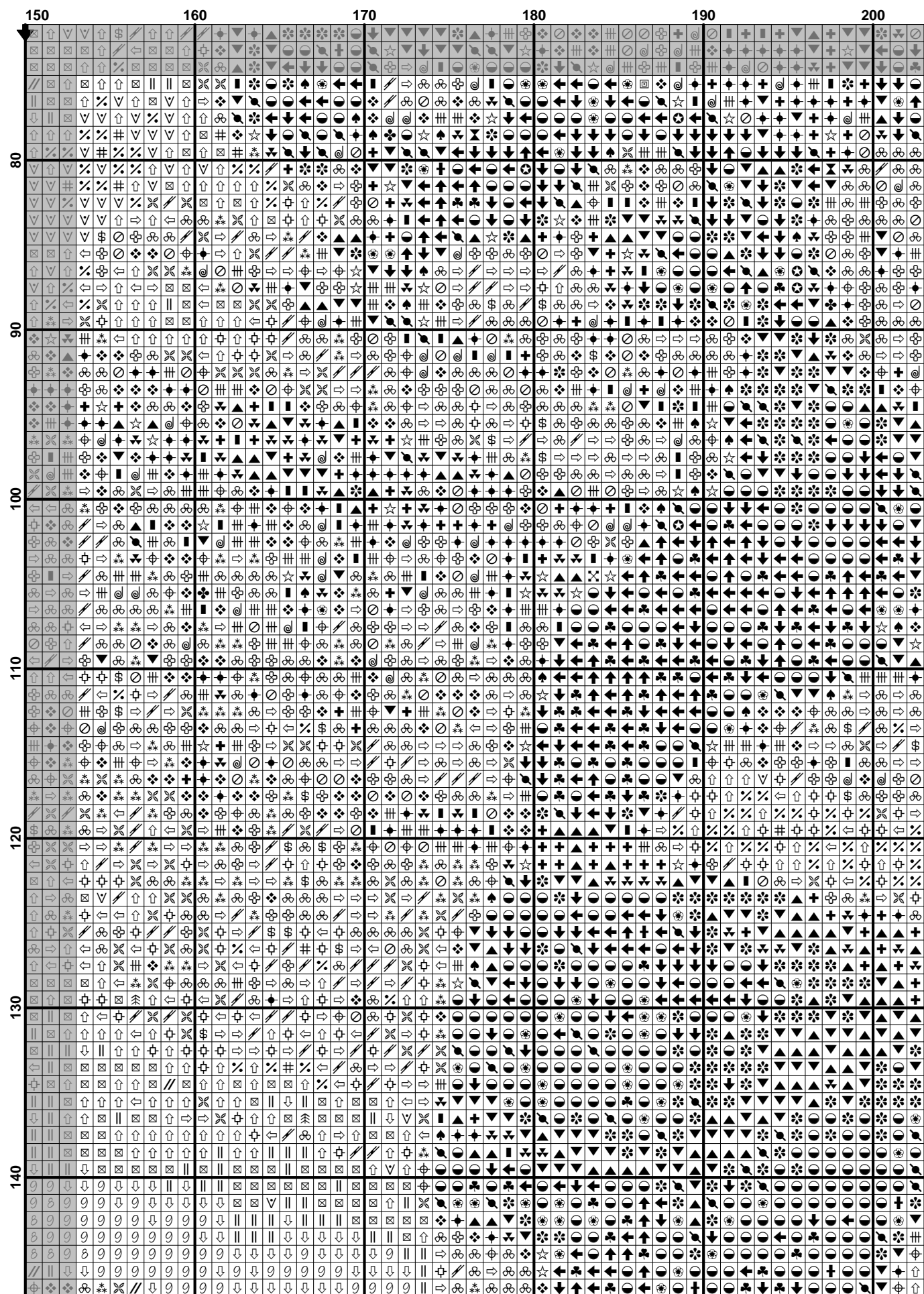


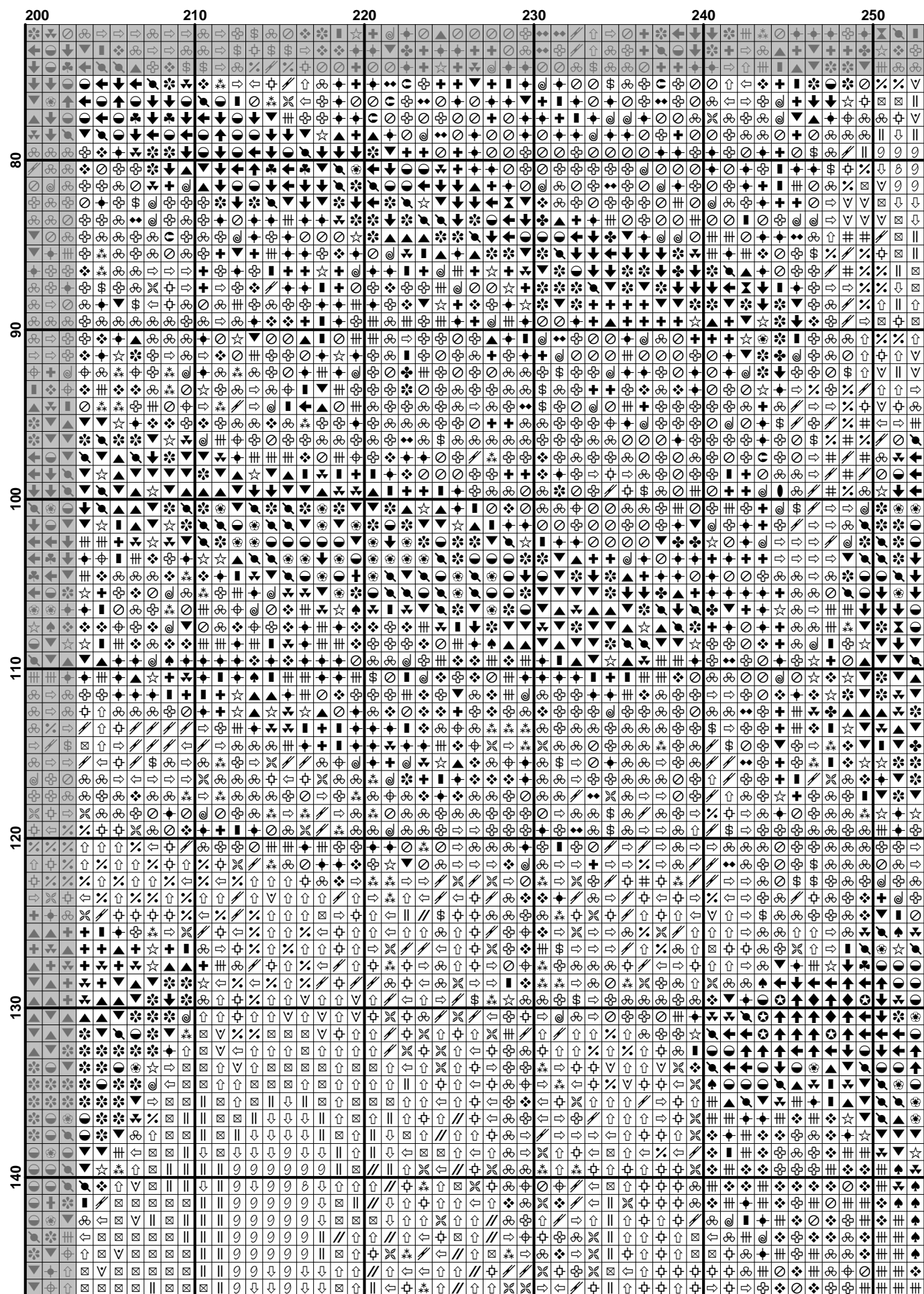


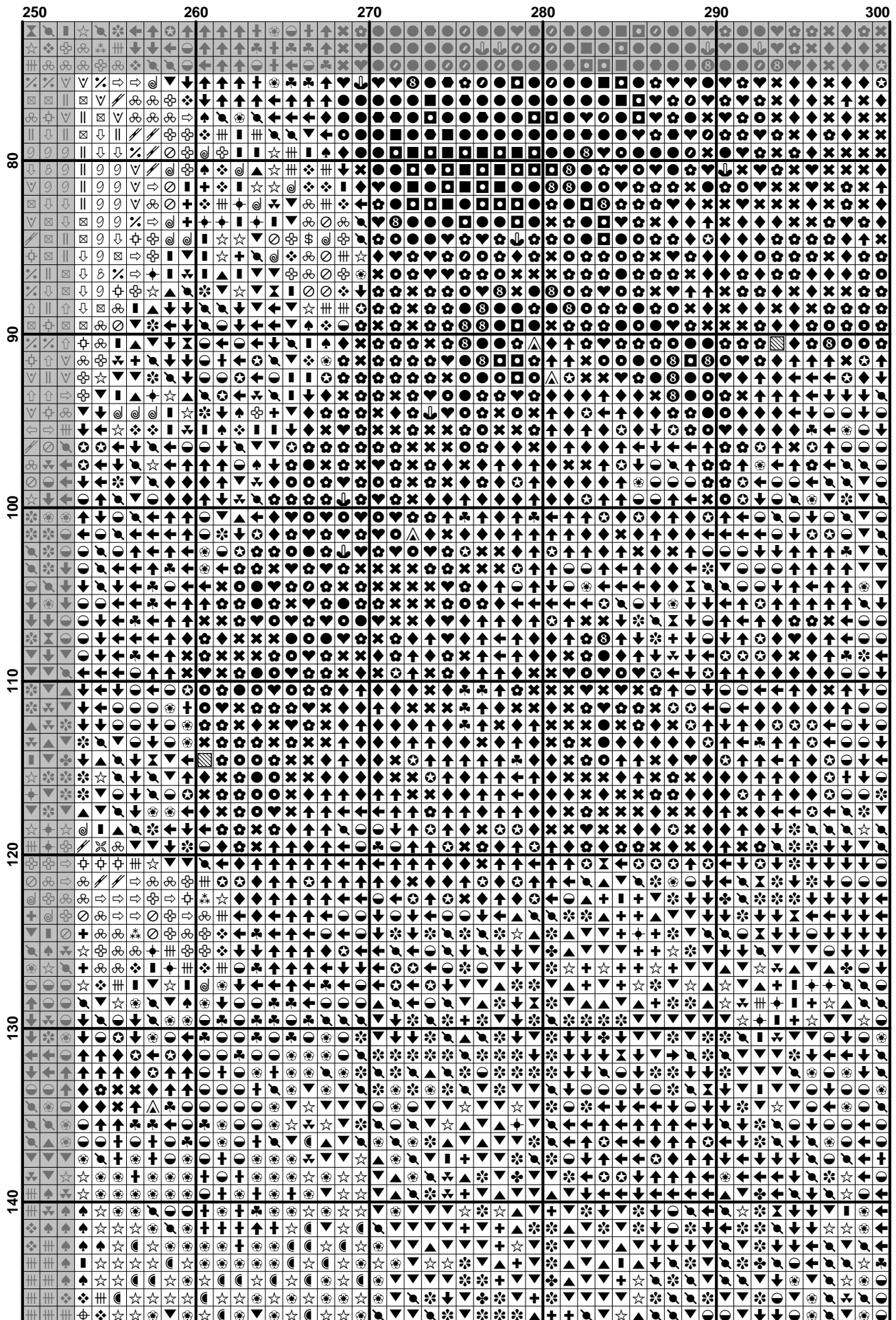


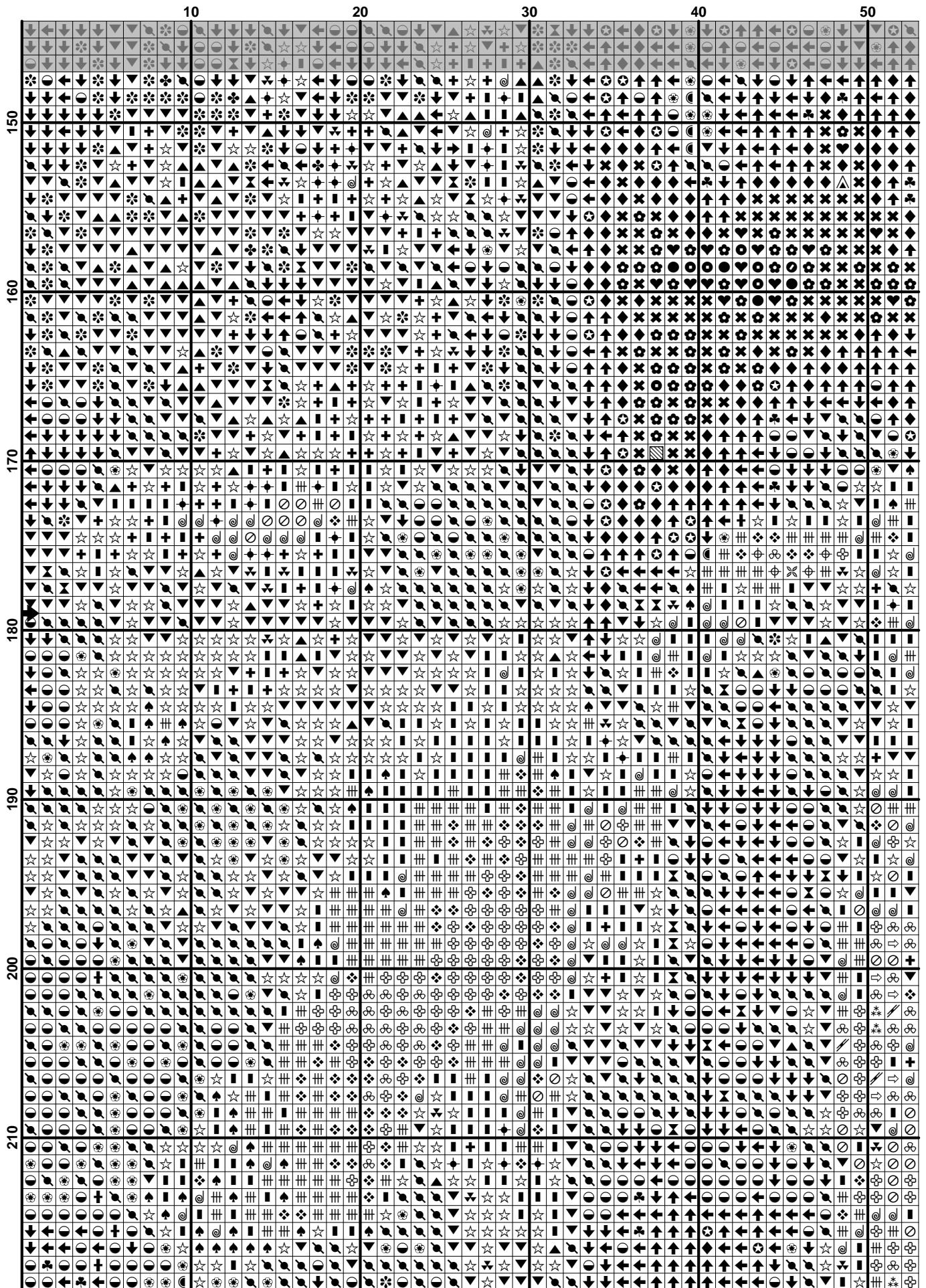






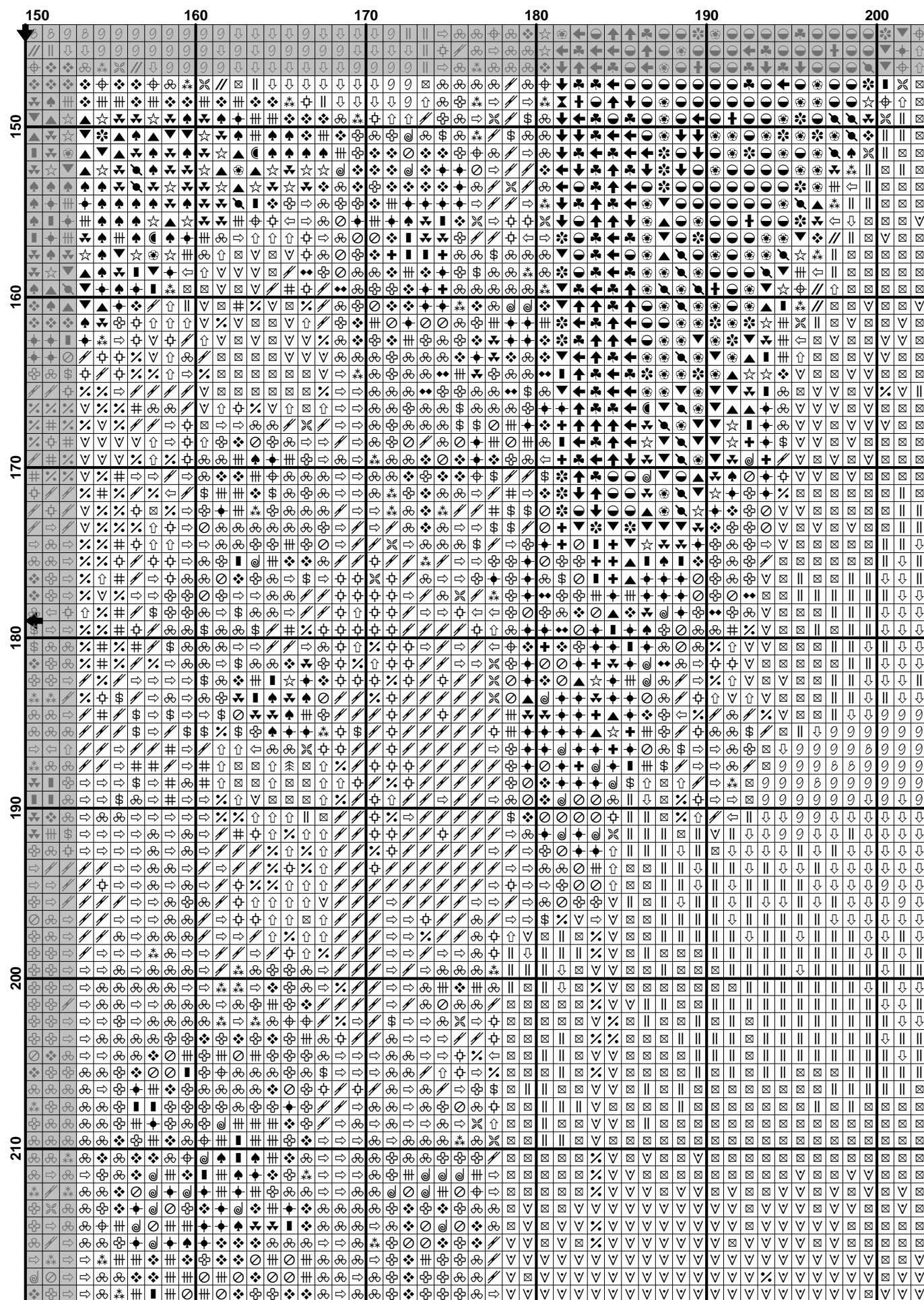


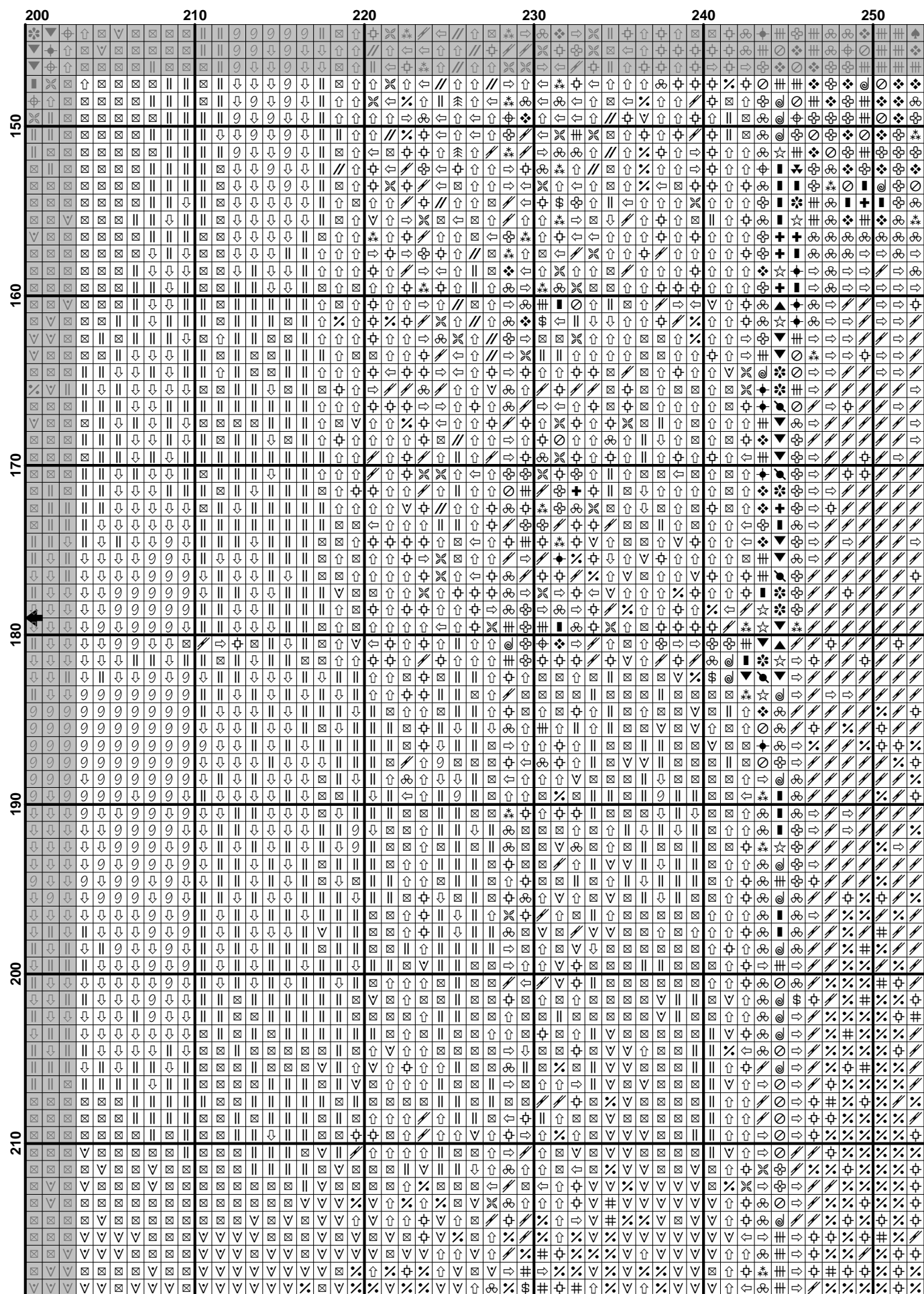


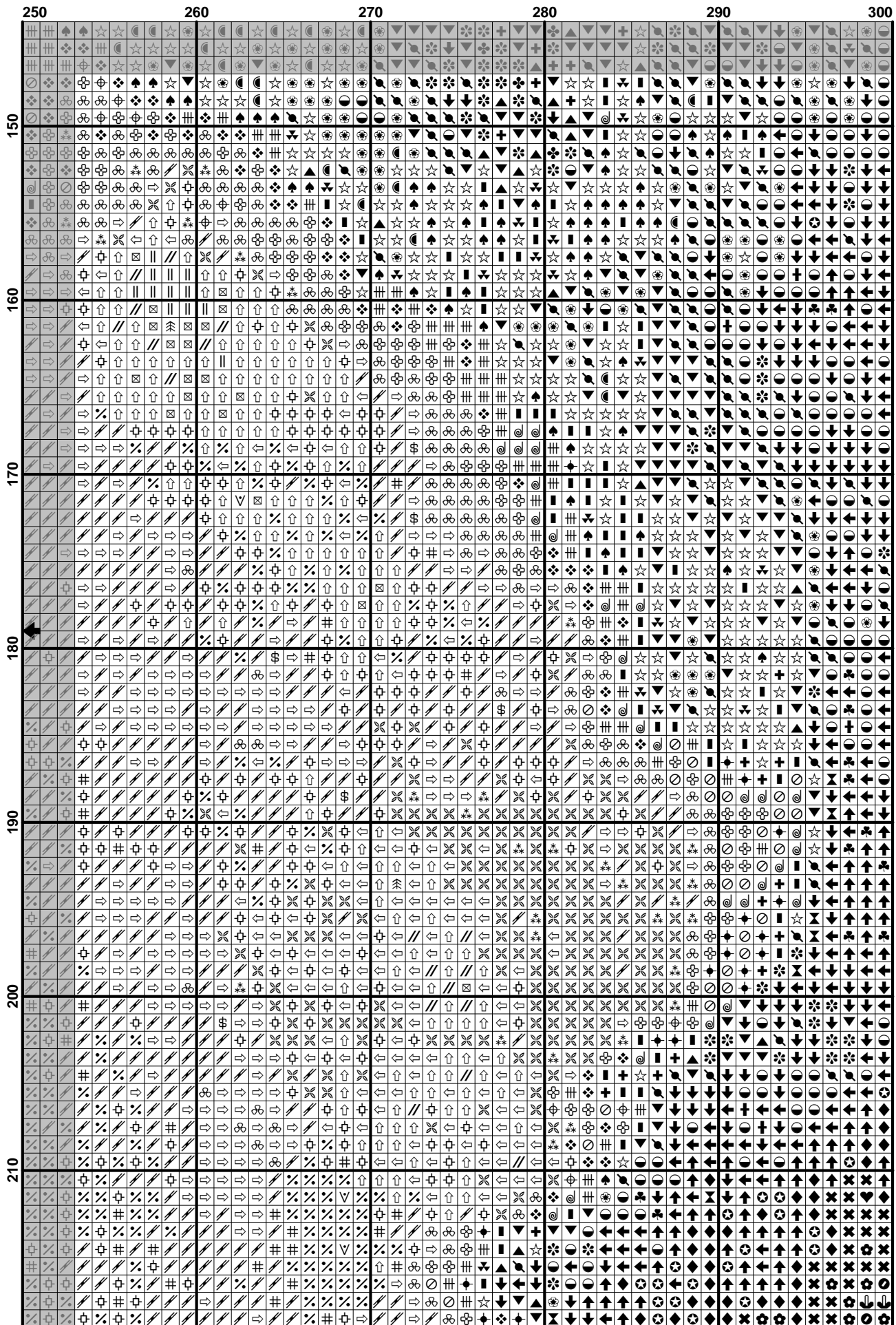


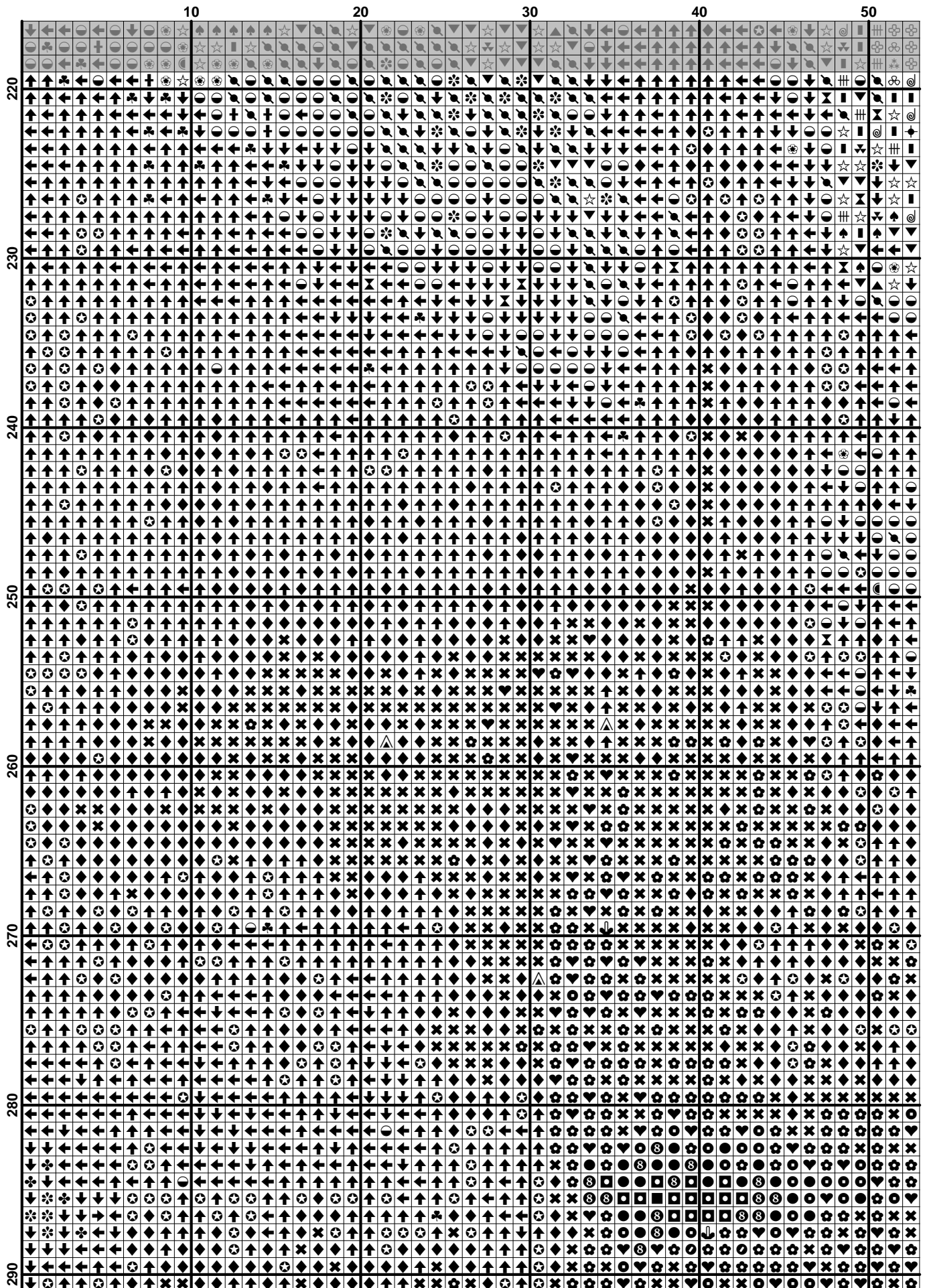
$$(20) \quad \mathcal{L}(\mathcal{A}) = \mathcal{L}(\mathcal{B}) \quad (21)$$

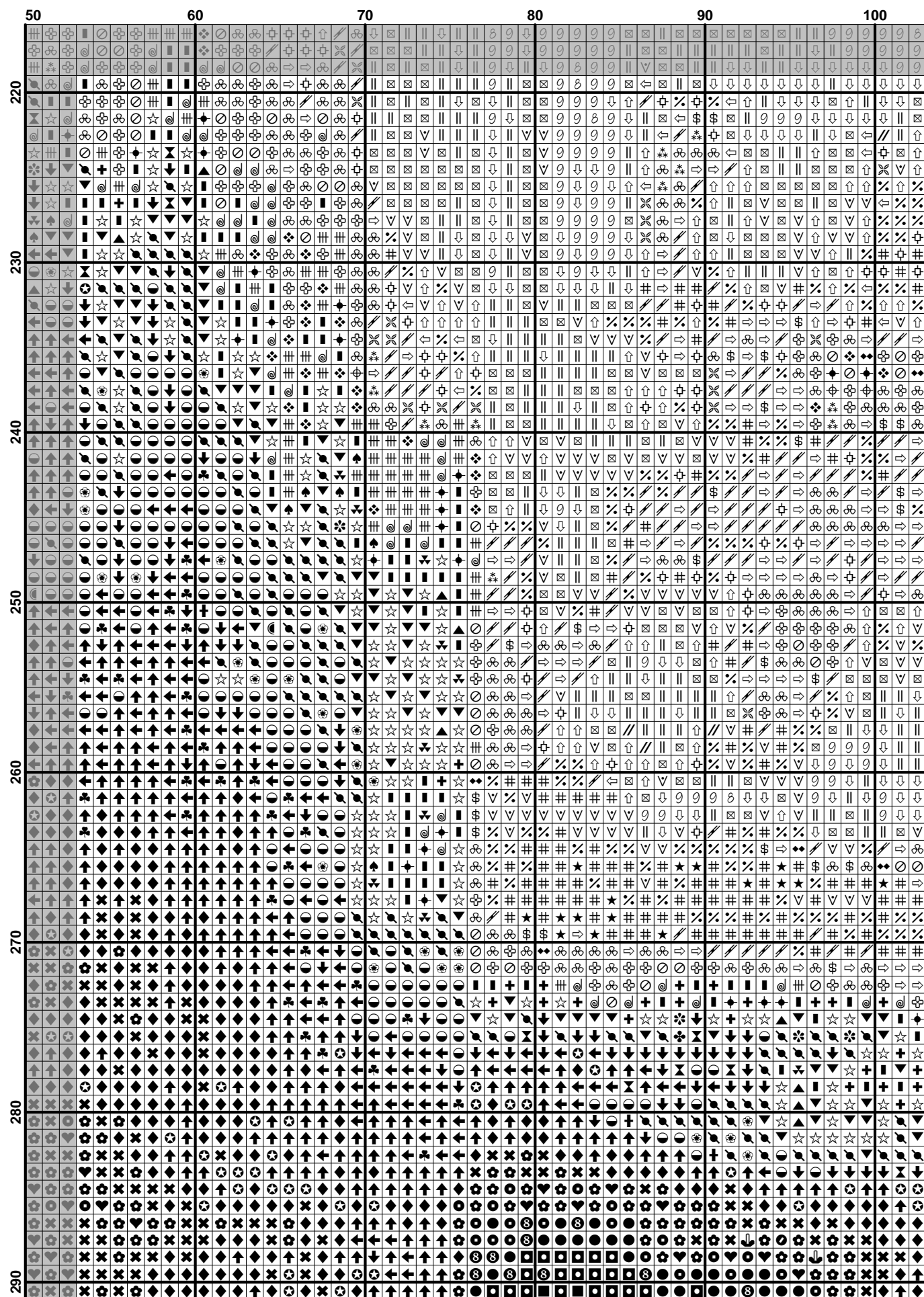
$$(21) \quad \mathcal{L}(\mathcal{A}) = \mathcal{L}(\mathcal{B}) \quad (22)$$

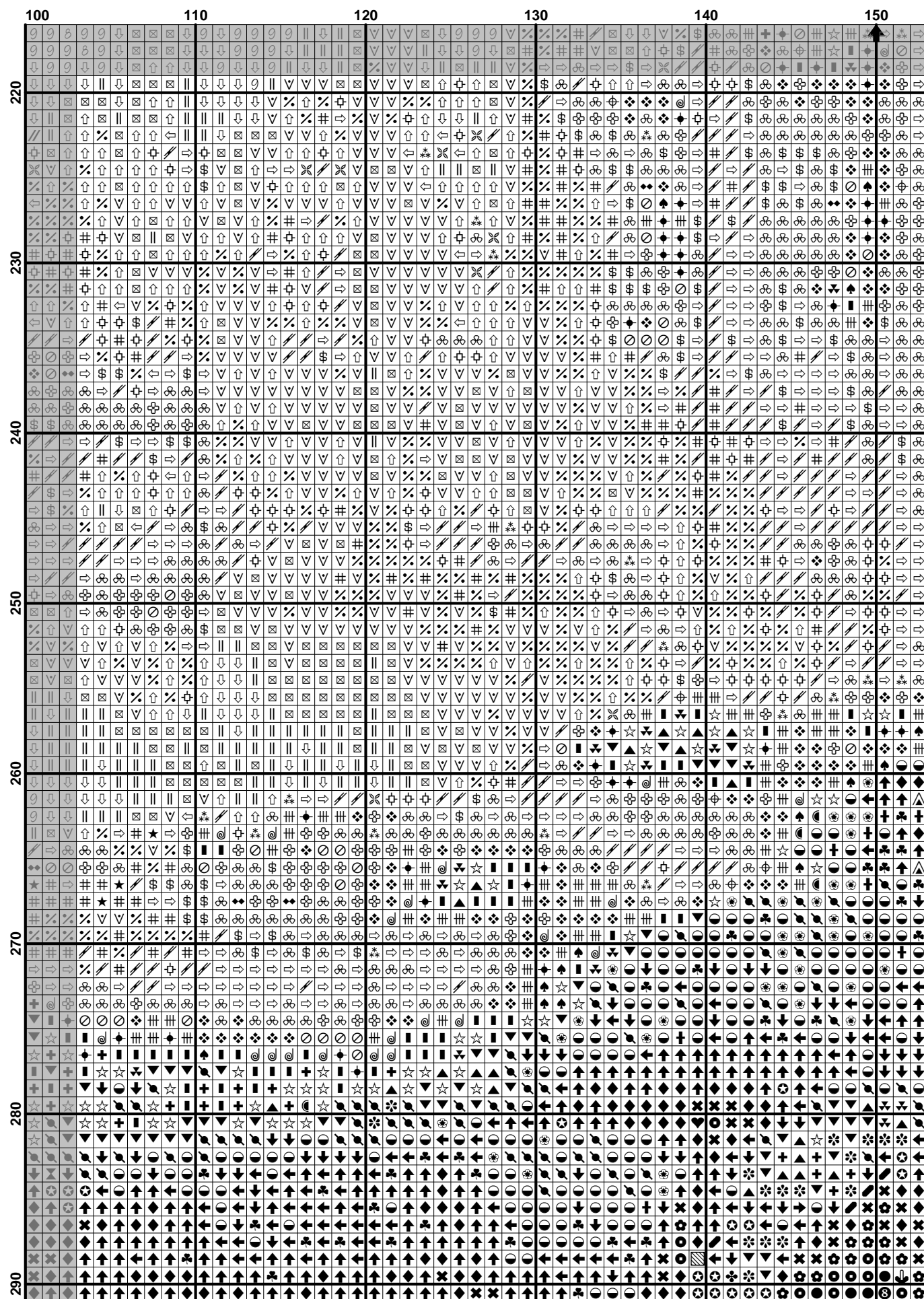


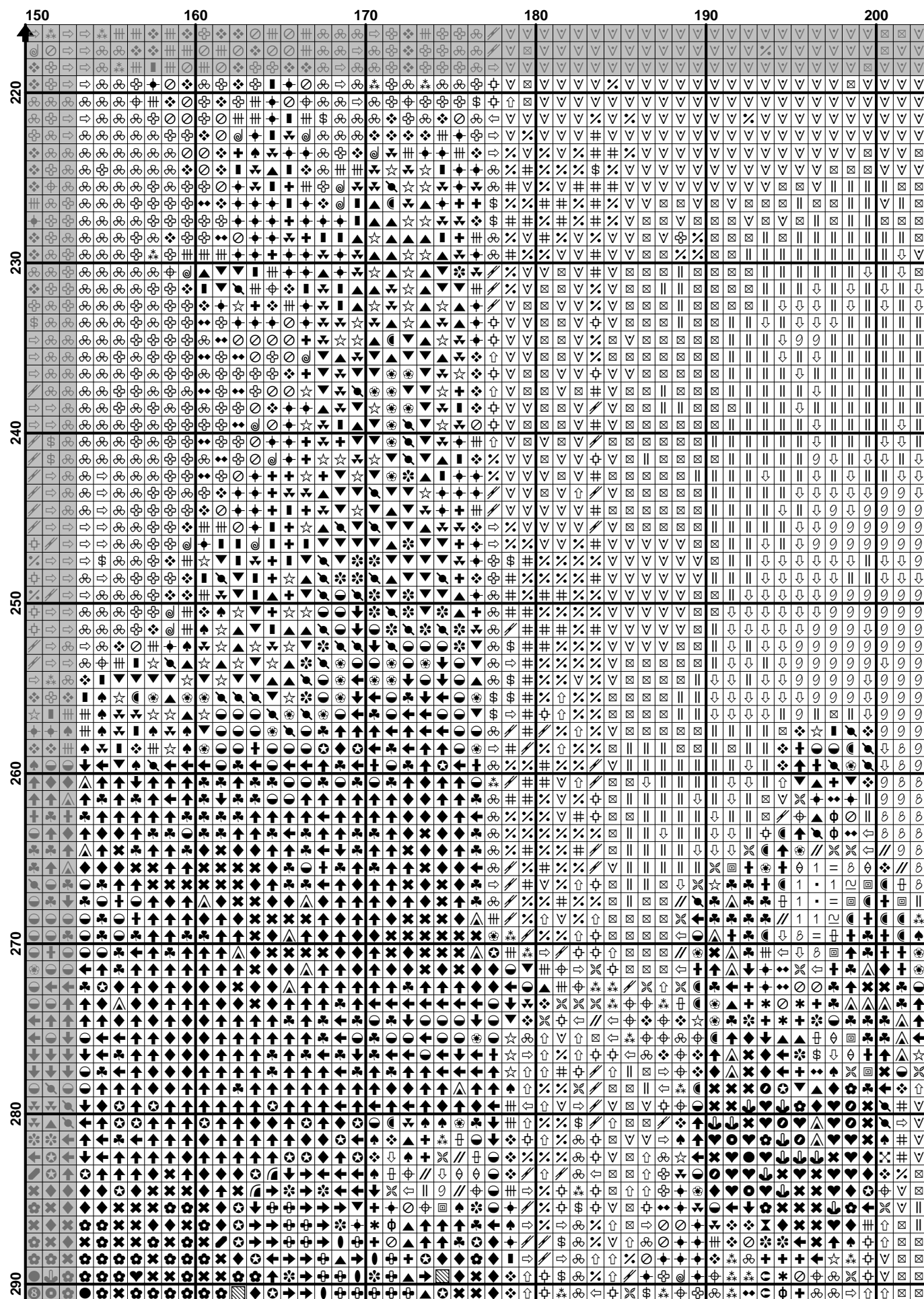












[illegible]

