

# Stoney Creek<sup>®</sup>

Book 388

COLLECTION

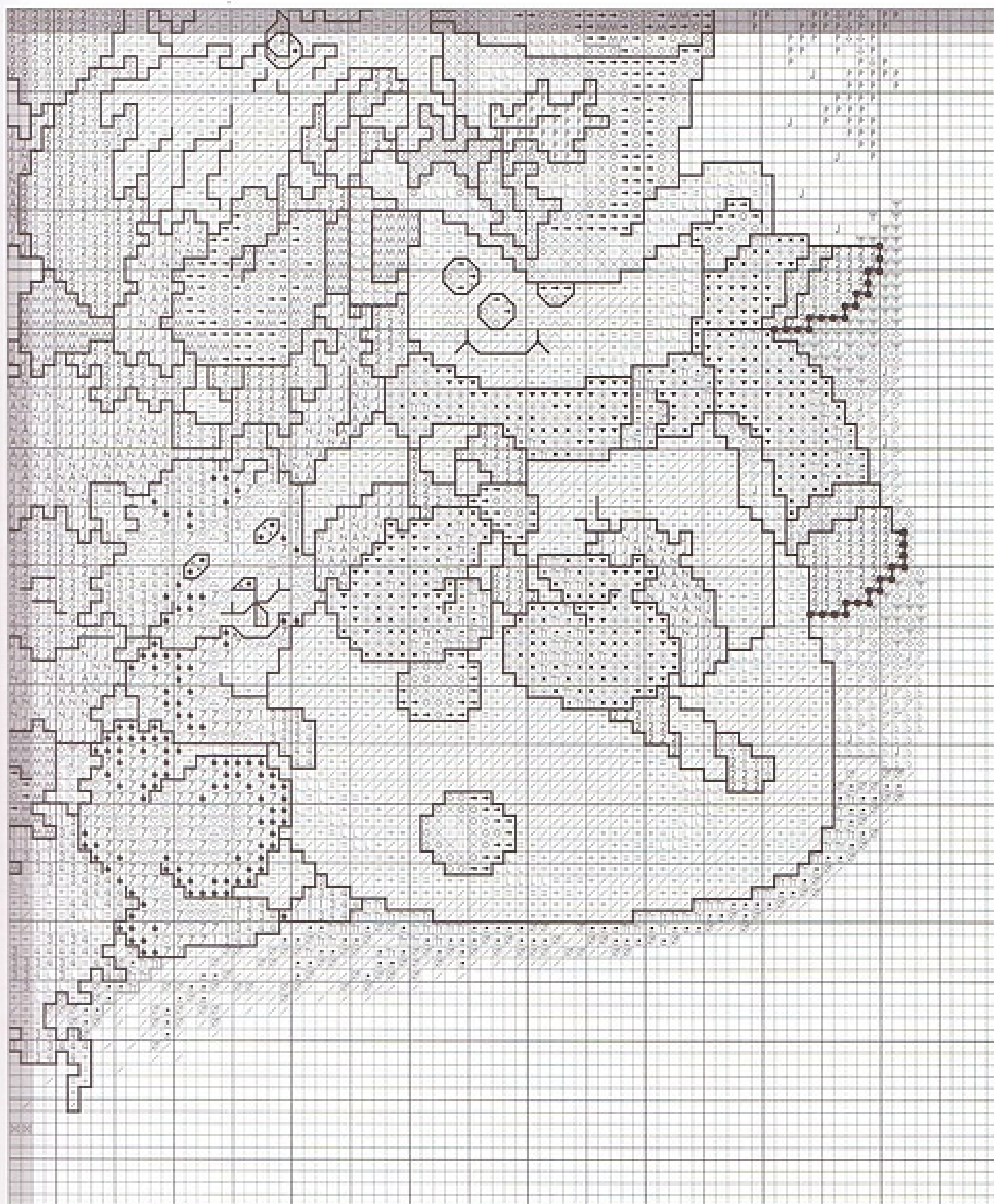
\$7.95 U.S.

## Best of Stoney Creek Stockings II



Printed in U.S.A.





A

Stoney Creek Collection, Inc. ©1994, 2007

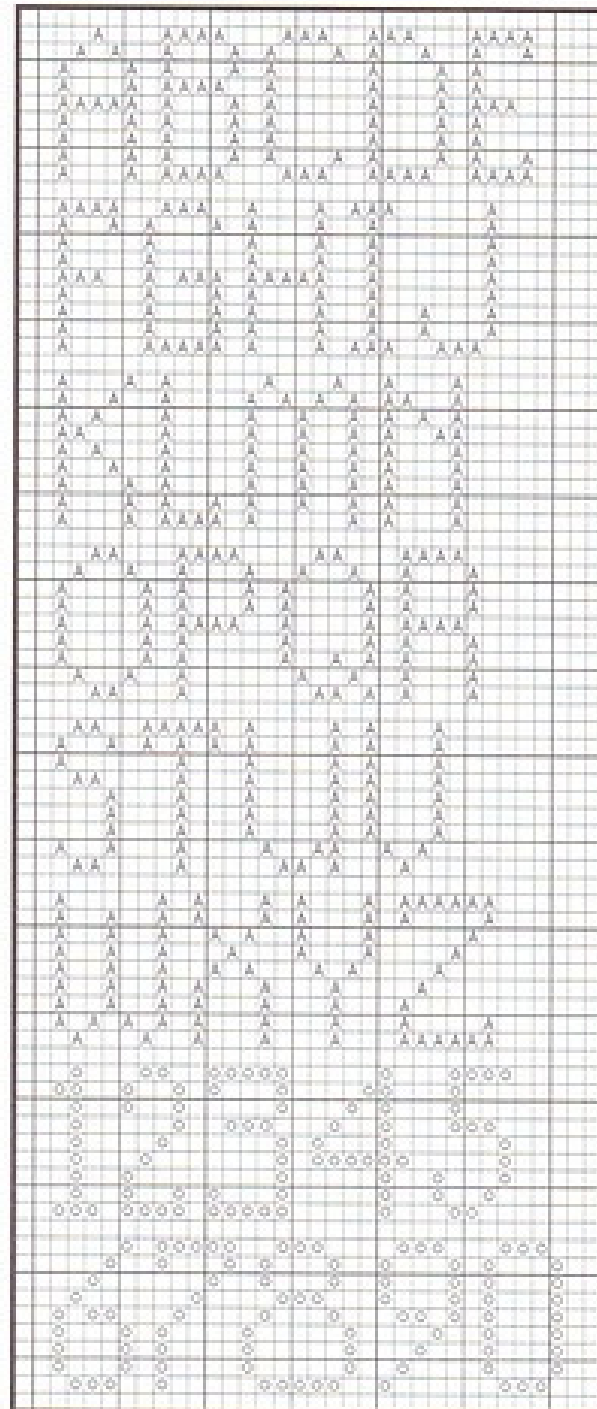
SPECIAL NOTE: The dark grey shaded area of this graph is a duplication of symbols from the graph on page 7. The light grey shaded area of this graph is a duplication of symbols from the graph on page 8.

## Not a Creature Was Stirring...?

ANCHOR DMC  
Embroidery Thread

■ 45	814	garnet med.	
→ 47	498	Christmas red dk.	
○ 9046	321	Christmas red	
× 46	666	Christmas red bright	
35	3705	watermelon	
L 33	3706	watermelon lt.	
● 683	890	grass green ultra vy. dk.	
▲ 218	319	grass green vy. dk.	
⊗ 218*	319*	grass green vy. dk.	
246*	986*	forest green dk.	Tweeding
A 246	986	forest green dk.	
E 244	987	forest green med.	
N 243	988	forest green	
R 242	989	forest green lt.	
2 242*	989*	forest green lt.	Tweeding
266*	3347*	hunter green lt.	
J 266	3347	hunter green lt.	
^ 266*	3347*	hunter green lt.	Tweeding
264*	3348*	hunter green vy. lt.	
^ 264	3348	hunter green vy. lt.	
▼ 102	550	violet vy. dk.	
⊙ 102*	550*	violet vy. dk.	Tweeding
110*	208*	lavender dk.	
× 110	208	lavender dk.	
Tr 110*	208*	lavender dk.	Tweeding
109*	209*	lavender med.	
⊙ 109	209	lavender med.	
• 108	210	lavender	
□ 342	211	lavender lt.	
M 1046	435	brown med.	
• 1045	436	brown	
S 362	437	brown lt.	
△ 367	738	brown vy. lt.	
▽ 366	739	brown ultra vy. lt.	
• 926	712	cream	
♡ 235	414	pewter grey	
P 399	318	pewter grey lt.	
✓ 399**	318**		
= 398	415	pearl grey	
≈ 398**	415**		
+ 234	762	pearl grey lt.	
⊕ 234**	762**		
/ 1	white		
⊗ 1**	white**		
◆ 302	743	tangerine vy. lt.	
F 301	744	yellow	
⊙ 301**	744**		
● 300	745	yellow lt.	
⊥ 300**	745**		
C 275	746	off white	
⊙ 275**	746**		
W 132	797	royal blue lt.	
Y 131	798	delft med.	
? 130	799	delft	
> 129	809	delft lt.	
⊕ 128	800	delft vy. lt.	
⊙ 9	352	coral	
\$ 8	353	peach flesh med.	
☆ 1012	754	peach flesh	
■ 1011	948	peach flesh lt.	
381	938	coffee brown dk.	
		for backstitching	

## Personalization Alphabet & Numerals for "Not a Creature Was Stirring...?" Design.



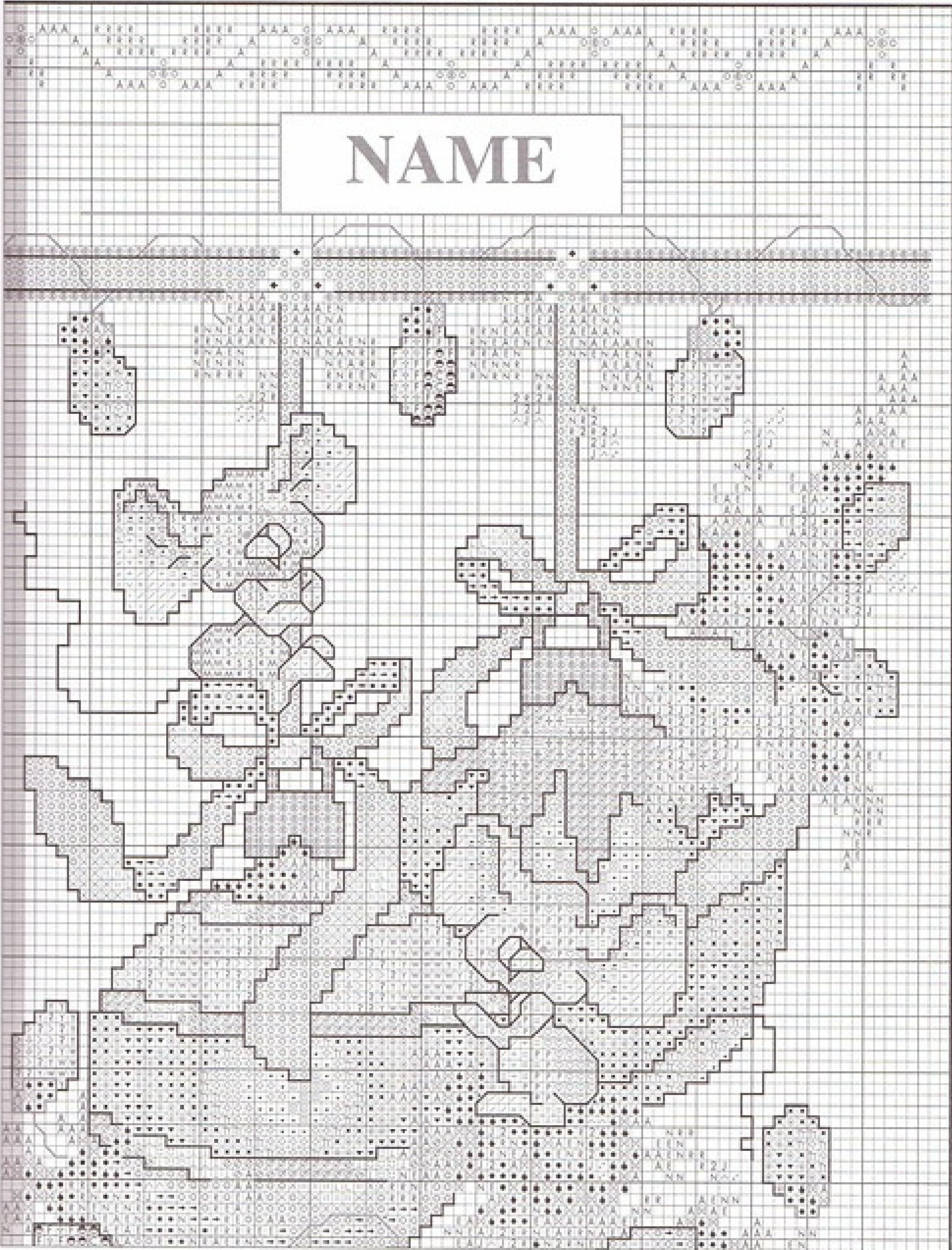
Stoney Creek Collection, Inc. ©1996, 2007

**SPECIAL NOTE:** Using the grey lines on the graph as guides for placement, center and stitch personalization using the alphabet and numerals shown here.

**SPECIAL NOTE:** The color list and special instructions are continued on page 12.

SPECIAL NOTE: The grey shaded area of this graph is a duplication of symbols from the graph on page 10.

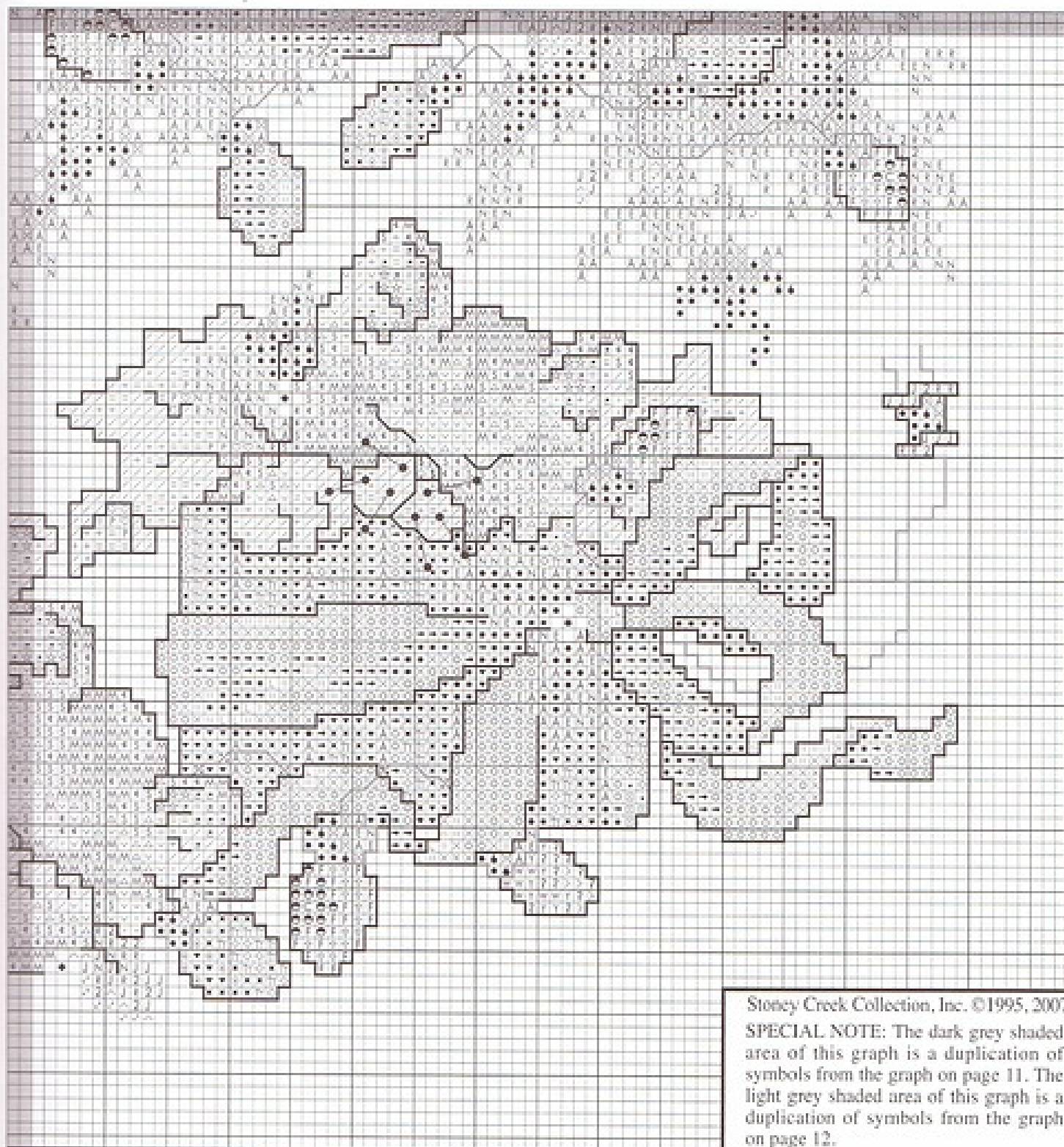
V



Stoney Creek Collection, Inc. ©1995, 2007

A

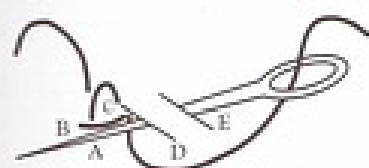




Stoney Creek Collection, Inc. ©1995, 2007

**SPECIAL NOTE:** The dark grey shaded area of this graph is a duplication of symbols from the graph on page 11. The light grey shaded area of this graph is a duplication of symbols from the graph on page 12.

A



4. With the thread once again below the needle, go in at E, and come up in the same hole as D; pull tight.



5. Repeat this sequence along the line, each time coming up in the previous hole. Alternate the thread above the needle, leaving a loop; and below the needle, pulling tight.



6. After completing the line, cut all loops along the dotted line (as shown).



## Santa's Little Snowman

### ANCHOR DMC Embroidery Thread

M 403	310	black
• 382	3371	coffee brown vy. dk.
4 1088	838	beige brown vy. dk.
3 1086	839	beige brown dk.
1 1084	840	beige brown med.
• 1046	435	brown med.
7 1045	436	brown
♡ 362	437	brown lt.
△ 367	738	brown vy. lt.
✓ 366	739	brown ultra vy. lt.
→ 236	3799	pewter grey vy. dk.
○ 401	413	pewter grey dk.
× 400	317	pewter grey med.
235	414	pewter grey
L 399	318	pewter grey lt.
= 398	415	pearl grey
+ 234	762	pearl grey lt.
/ 1	white	
J 1**	white**	
5 8	353	peach flesh med.
^ 1012	754	peach flesh
• 1011	948	peach flesh lt.
8 897	902	garnet dk.
9 897*	902*	garnet dk.
1005*	816*	garnet lt. — Tweeding
9 1005	816	garnet lt.
2 9046	321	Christmas red
✕ 218	319	grass green vy. dk.
◇ 267	3346	hunter green
P 264	3348	hunter green vy. lt.
\$ 308	782	topaz dk.
8 307	783	topaz med.
ℓ 306	725	topaz
ℓ 306††	725††	
• 305	726	topaz lt.
■ 293	727	topaz vy. lt.
▼ 979	322	navy blue vy. lt.
⊙ 978	334	baby blue dk.
✕ 977	3755	baby blue med.
tr 976	3325	baby blue
± 975	775	baby blue lt.
/ 1037	3756	baby blue vy. lt.
▷ 152†	939†	navy blue vy. dk.
▷ 152†	823†	navy blue dk.
◇ 150†	336†	navy blue med.
▽ 150†	311†	navy blue
A 300**	745**	yellow lt.
N 275**	746**	off white

### GLISSENGLOSS™

#### Rainbow™ Blending Thread

000	bright white
406	gold

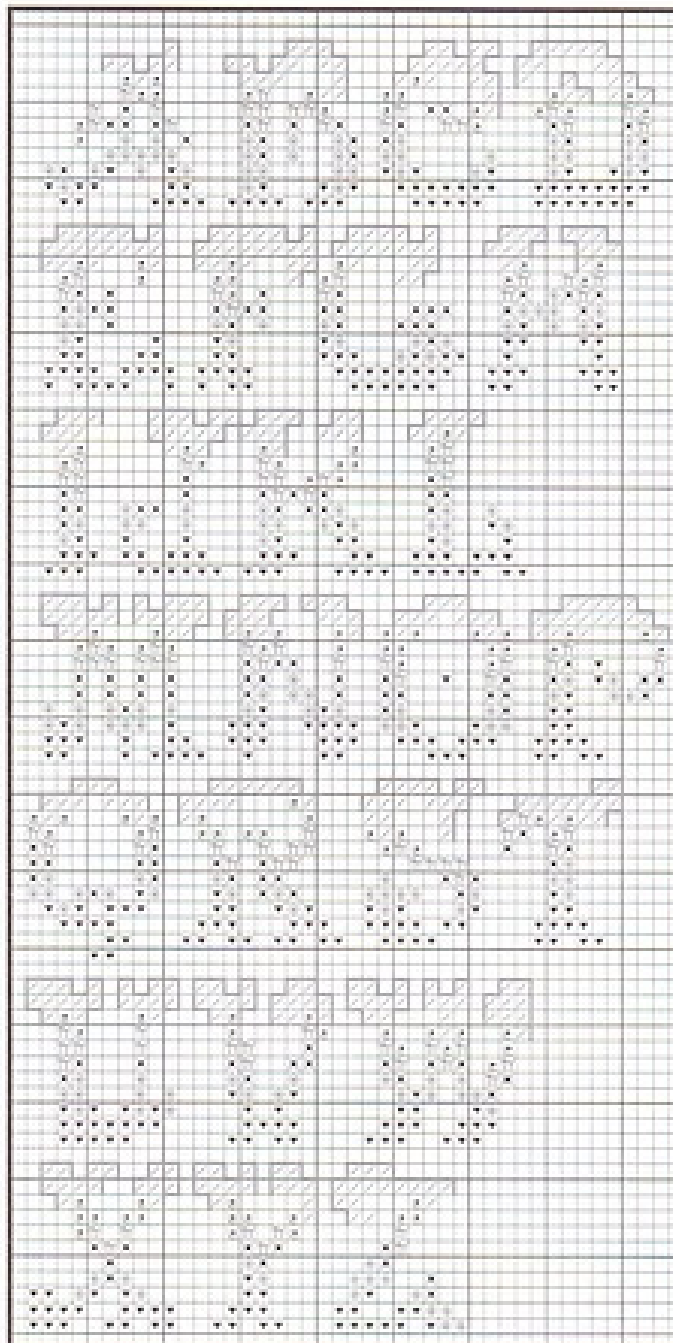
Backstitch lines printed in grey on Santa's face in ANCHOR 936/ DMC 839.

Backstitch remaining lines printed in grey in ANCHOR 978/ DMC 334.

All other backstitching is done in ANCHOR 382/ DMC 3371.

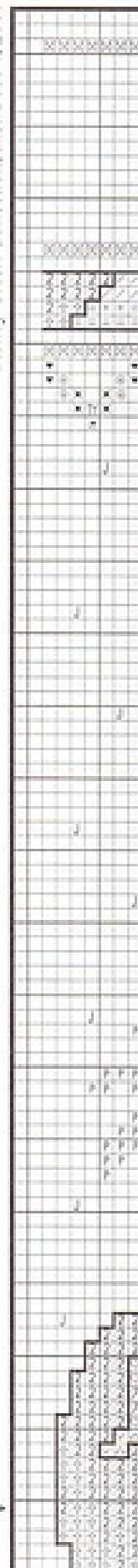
**SPECIAL NOTE:** The color list and special instructions are continued on page 8.

## Personalization Alphabet for "Santa's Little Snowman" Design.



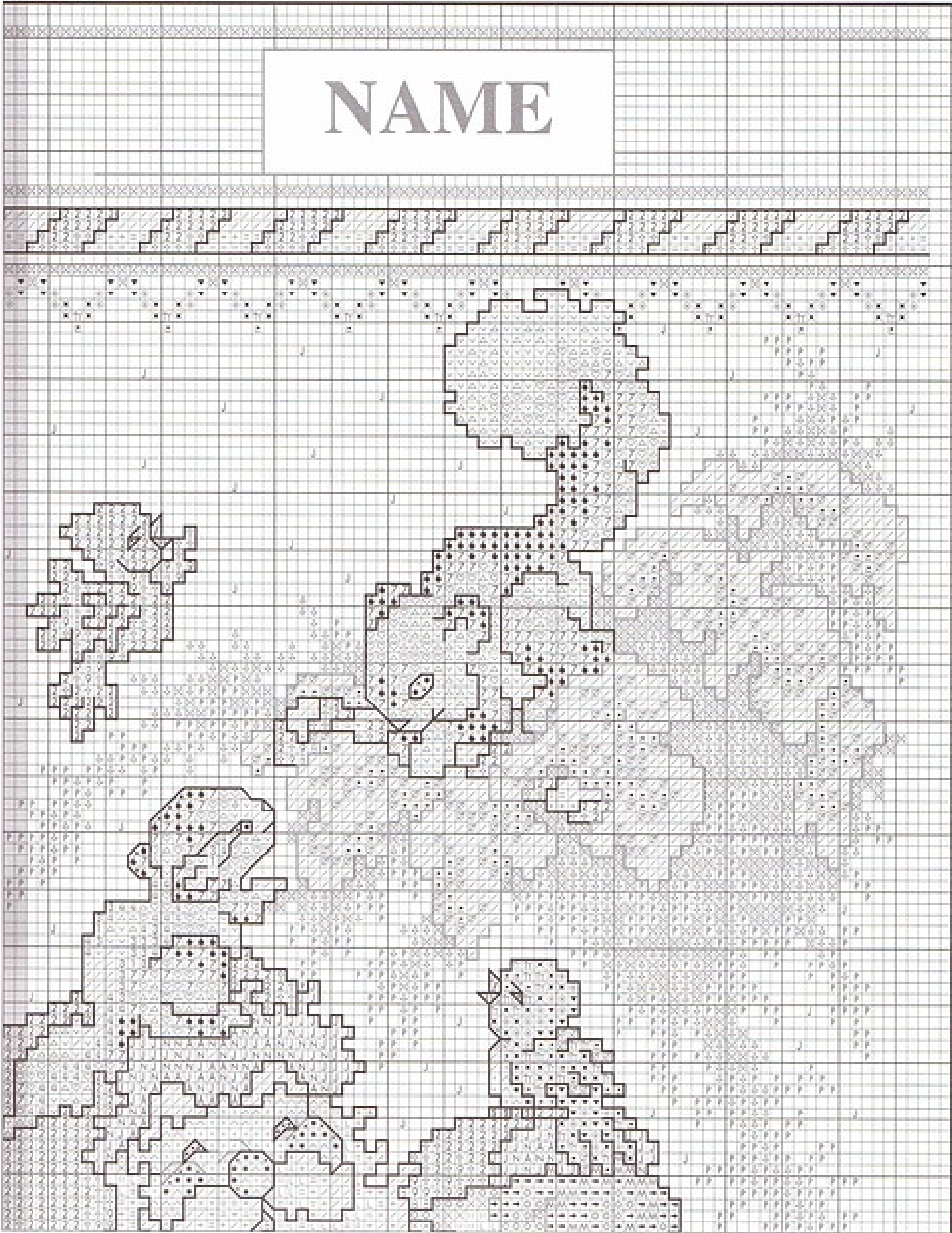
Stoney Creek Collection, Inc. ©1999, 2007

**SPECIAL NOTE:** Using the grey lines on the graph as guides for placement, center and stitch personalization using the alphabet and numerals shown here.



SPECIAL NOTE: The grey shaded area of this graph is a duplication of symbols from the graph on page 6.

V



Stoney Creek Collection, Inc. ©1994, 2007

A

## Santa's Little Snowman (cont.)

**SPECIAL NOTE:** The dark grey shaded area of this graph is a duplication of symbols from the graph on page 6.

\* Tweedling: Using more than one color of floss simultaneously when cross stitching. For this design, use 1 strand of each color indicated.

\*\* Use 1 strand of floss and 2 strands of GLISSENGLOSS™ 000 bright white Rainbow™ blending thread.

† Use 1 strand of floss and work 1/2 cross stitches.

†† Use 1 strand of floss and 2 strands of GLISSENGLOSS™ 406 gold Rainbow™ blending thread.

Using large black dots on scarf as guides for placement, work 2 strands each of ANCHOR 9046/ DMC 321 and ANCHOR 2667/ DMC 3346 in the Turkey stitch. Turkey stitch instructions are located on page 12.

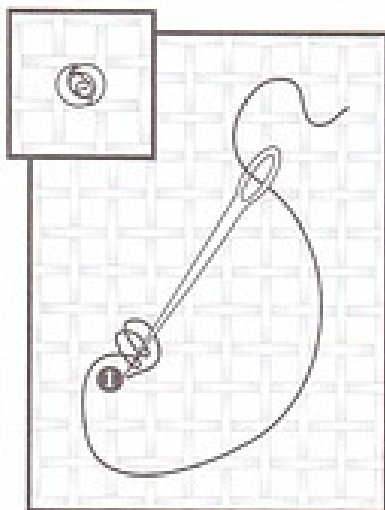
136w x 203h Stitches

Approximate Design Area:

Aida 11.....	12 1/4" x 18 1/2"
	(31.4 cm x 46.9 cm)
Aida 14.....	9 3/4" x 14 1/2"
	(24.7 cm x 36.8 cm)
Aida 18.....	7 1/2" x 11 1/4"
	(19.2 cm x 28.6 cm)

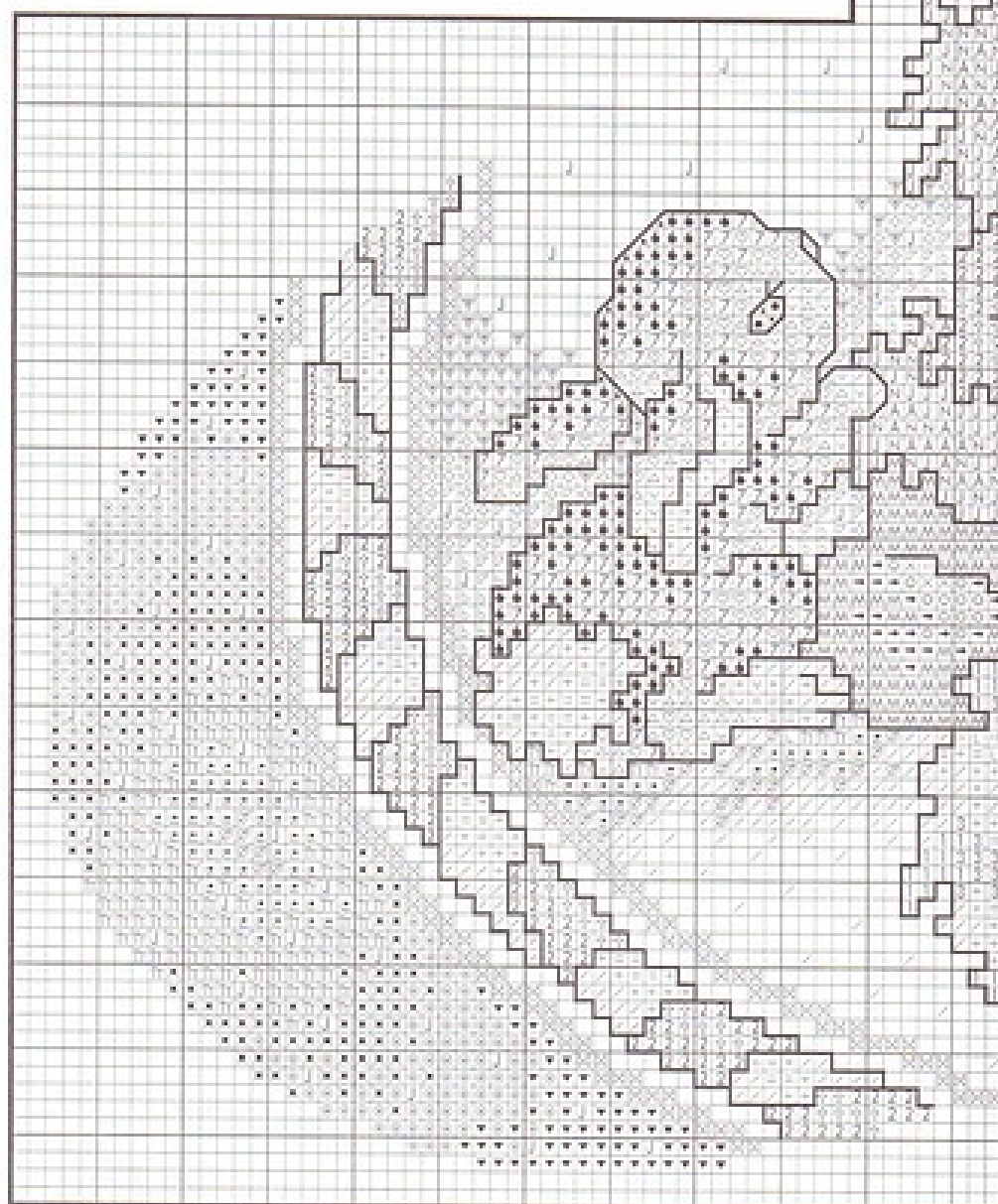
**NOTE:** Our model was stitched on 28 ct. wedgewood Lugana over 2 threads with 2 strands of floss for cross stitch and 1 for backstitch, unless otherwise noted.

### French Knot



Stoney Creek Collection, Inc. ©2007

Using the thread indicated, come up at 1, wrap thread around needle twice, unless otherwise indicated. Go back down at 1. Pull thread until snug.



Stoney Creek Collection, Inc. ©1994, 2007



## Not a Creature Was Stirring...? (cont)

**SPECIAL NOTE:** The dark grey shaded area of this graph is a duplication of symbols from the graph on page 10

DMC

Metallic Embroidery Floss (2 strands)

© 5282 light gold

GLISSENGLOSS™

Rainbow™ Blending Thread

000 bright white

407 brass

MILL HILL

Pebble Glass Beads

◆ 05025 ruby

Backstitch lines printed in grey with 2 strands of GLISSENGLOSS™ 407 brass Rainbow™ blending thread.

Backstitch border at top of stocking in ANCHOR 218/ DMC 319.

All other backstitching is done in ANCHOR 381/ DMC 938.

\* Tweeding: Using more than one color of floss simultaneously when cross stitching. For this design, use 1 strand of each color indicated.

\*\* Use 1 strand of floss and 2 strands of GLISSENGLOSS™ 000 bright white Rainbow™ blending thread.

Using large black dots and fine black lines as guides for placement, long stitch kittens' whiskers with 1 strand of ANCHOR 235/ DMC 414.

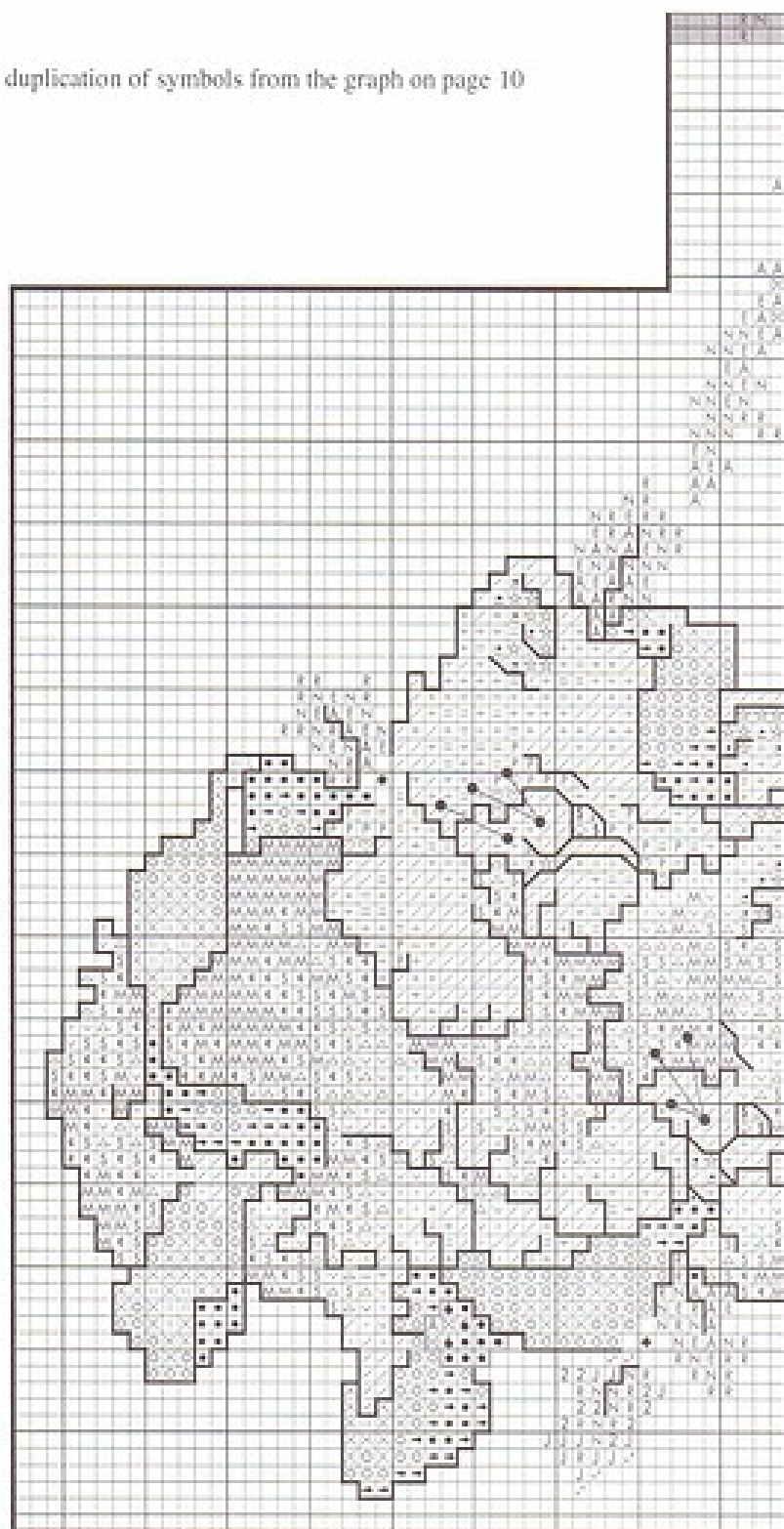
Using large grey dots as guides for placement, work French Knots in eyes of mice with 1 strand of ANCHOR 381/ DMC 938. French Knot instructions are found on page 8.

127w x 198h Stitches

Approximate Design Area:

Aida 11 .....	11 1/2" x 18"
	(29.3 cm x 45.7 cm)
Aida 14 .....	9" x 14 1/4"
	(23.0 cm x 35.9 cm)
Aida 18 .....	7" x 11"
	(17.9 cm x 27.9 cm)

**NOTE:** Our model was stitched on 28 ct. white Glasgow linen over 2 threads with 2 strands of floss for cross stitch and 1 for backstitch, unless otherwise noted.



Stoney Creek Collection, Inc. ©1995, 2007

### Turkey Stitch Instructions



1. Go down at A, come up at B. Leave about 1" hanging on top (as shown in diagram #2). Do not knot. Arrow shows direction of working.



2. With floss below the needle go down at C and come up in the same hole as A. Pull this stitch tight, holding on to the loose end of thread, (so as not to pull it through the material).



3. With floss above the needle, go down at D, come up in the same hole as C. This time do not pull tight, but leave a loop. Always keep the needle horizontal while doing this stitch.