

**Stoney Creek** 

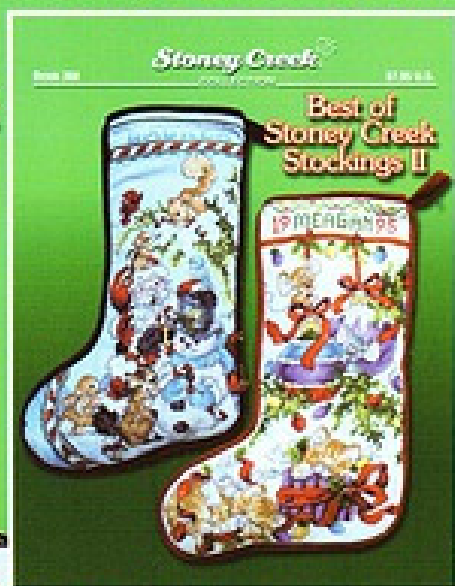
Book 388

COLLECTION

\$7.95 U.S.

Counted Cross Stitch

# Best of Stoney Creek Stockings II



SPECIAL NOTE: The grey shaded area of this graph is a duplication of symbols from the graph on page 2.

V

Stoney Creek Collection, Inc. ©2001, 2007



## Mr. Santa (cont.)

**SPECIAL NOTE:** The dark grey shaded area of this graph is a duplication of symbols from the graph on page 2.

### KREINIK

Japan Thread #7

002J gold

### BIRDHOUSE ENTERPRISES

Charms

✧ BE003 gold raised star (1)

Backstitch eyes of soldier, horse, mouse, bear and bear's nose in ANCHOR 403/ DMC 310.

Backstitch lines in Santa's face printed in grey in ANCHOR 1013/ DMC 3778.

Backstitch Santa's pupils in ANCHOR 162/ DMC 825.

All other backstitching is done in ANCHOR 382/ DMC 3371.

Using large grey dots and fine grey lines as guides for placement, long stitch lines on drum and line holding star charm with 1 strand of KREINIK 002J gold Japan Thread #7.

Using large grey dots on horse's mane as guides for placement, work 1 strand each of ANCHOR 900/ DMC 648 and ANCHOR 1/ DMC white and GLISSENGLOSS™ 000 bright white Rainbow™ Blending Thread in the Turkey stitch. Turkey stitch instructions are located on page 12.

\* Use 1 strand of floss and 2 strands of GLISSENGLOSS™ 000 bright white Rainbow™ blending thread.

\*\* Use 1 strand of floss and 2 strands of GLISSENGLOSS™ 107 royal blue Rainbow™ blending thread.

\*\*\* Use 1 strand of floss and 2 strands of GLISSENGLOSS™ 407 brass Rainbow™ blending thread.

**SPECIAL NOTE:** Mr. Claus' spectacles were done using a couching stitch. Thread your needle with 1 strand of KREINIK 002J gold Japan Thread #7. Come up and go down at bold black dots, laying Japan thread on top of fabric as indicated by grey lines. Tack down Japan Thread with 1 strand of GLISSENGLOSS™ 407 brass Rainbow™ blending thread, using thin short black lines as guides for placement.

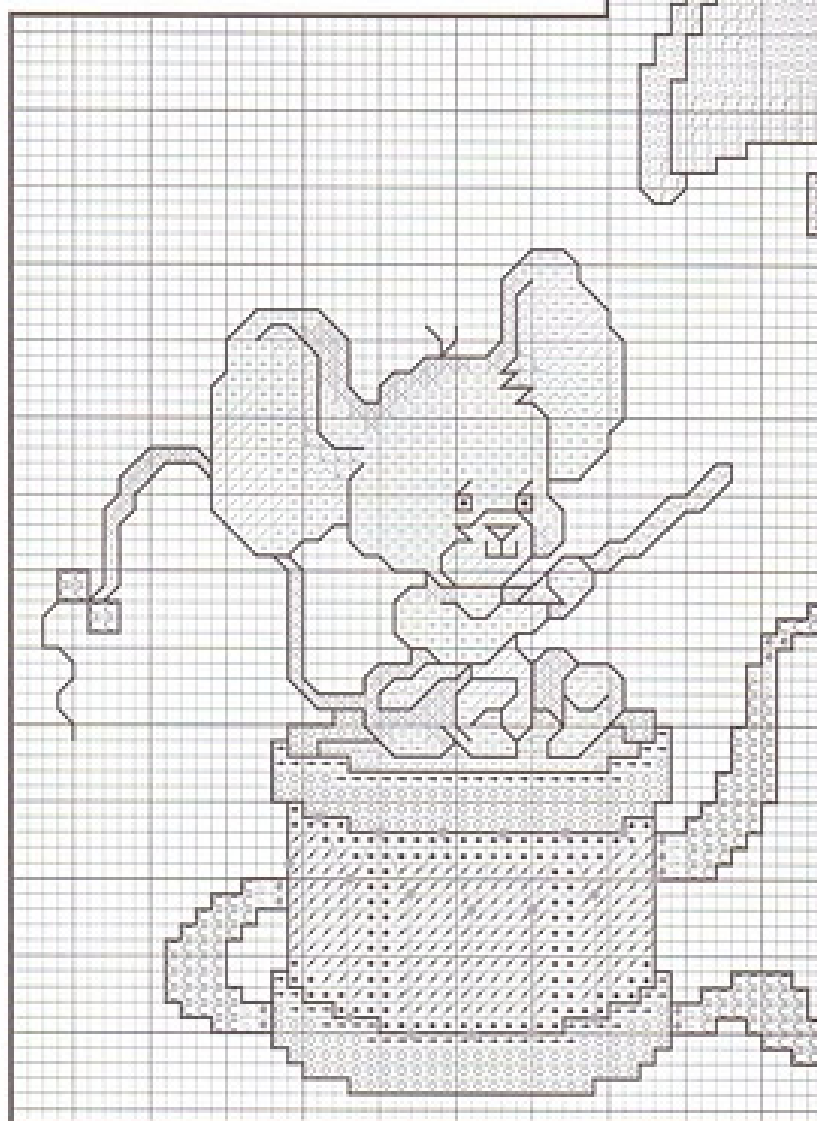
**SPECIAL NOTE:** We recommend washing and pressing your piece before attaching charm. Attach gold star with 2 strands of GLISSENGLOSS™ 407 brass Rainbow™ blending thread.

142w x 237h Stitches

Approximate Design Area:

Aida 11 .....	13" x 21 1/2"
	(32.8 cm x 54.7 cm)
Aida 14 .....	10 1/4" x 17"
	(25.8 cm x 43.0 cm)
Aida 18 .....	8" x 13 1/4"
	(20.0 cm x 33.4 cm)

**NOTE:** Our model was stitched on 28 ct. antique white Jobelan over 2 threads with 2 strands of floss for cross stitch and 1 for backstitch, unless otherwise noted.



Stoney Creek Collection, Inc. ©2001, 2007

# Christmas Lighthouse

## ANCHOR DMC Embroidery Thread

■ 897	902	garnet dk.
5 897	221	shell pink vy. dk.
♡ 896	3721	shell pink dk.
⋈ 1027	3722	shell pink med.
⋈ 894	223	shell pink
⊗ 683	500	blue green vy. dk.
⦿ 862	934	avocado green ultra vy. dk.
⊖ 862†	934†	
⊙ 263	3362	pine green dk.
× 262	3363	pine green
ƒ 262†	3363†	
⊥ 261	3364	pine green lt.
L 260	772	pine green vy. lt.
e 267	3346	hunter green
b 266	3347	hunter green lt.
C 264	3348	hunter green vy. lt.
✓ 859†	523†	fern green
G 393	640	beige grey dk.
B 392	642	beige grey med.
M 391	644	beige grey
Z 390	822	beige grey lt.
ˆ 926	ecru	
3 779	3768	stormy blue med.
l 850	926	stormy blue
∅ 850*	926*	
⊙ 849	927	stormy blue lt.
⊗ 849*	927*	
⋈ 848	928	stormy blue vy. lt.
H 848*	928*	
Q 871	3041	antique violet
P 870	3042	antique violet lt.
⊥ 869	3743	antique violet vy. lt.
# 273	3021	brown grey vy. dk.
✓ 273	3787	brown grey dk.
⋈ 8581	3022	brown grey
= 900	3023	brown grey lt.
+ 397	3024	brown grey vy. lt.
/ 1	white	
• 1*	white*	
⊖ 888	3045	yellow beige med.
⊙ 1046	435	brown med.
A 1045	436	brown
E 362	437	brown lt.
R 367	738	brown vy. lt.
N 366	739	brown ultra vy. lt.
J 926	712	cream
⊖ 907*	729*	old gold lt.
⊗ 907**	729**	
△ 874*	676*	old gold vy. lt.
▽ 956*	677*	old gold ultra vy. lt.
- 275*	746*	off white
S 45***	814***	garnet med.
U 1005***	816***	garnet lt.
Y 1025***	347***	salmon vy. dk.

382 3371 coffee brown vy. dk.  
for backstitching

## GLISSENGLOSS™

### Rainbow™ Blending Thread

000	bright white
407	brass
617	red

## MILL HILL

### Glass Seed Beads

● 02014 black (1)

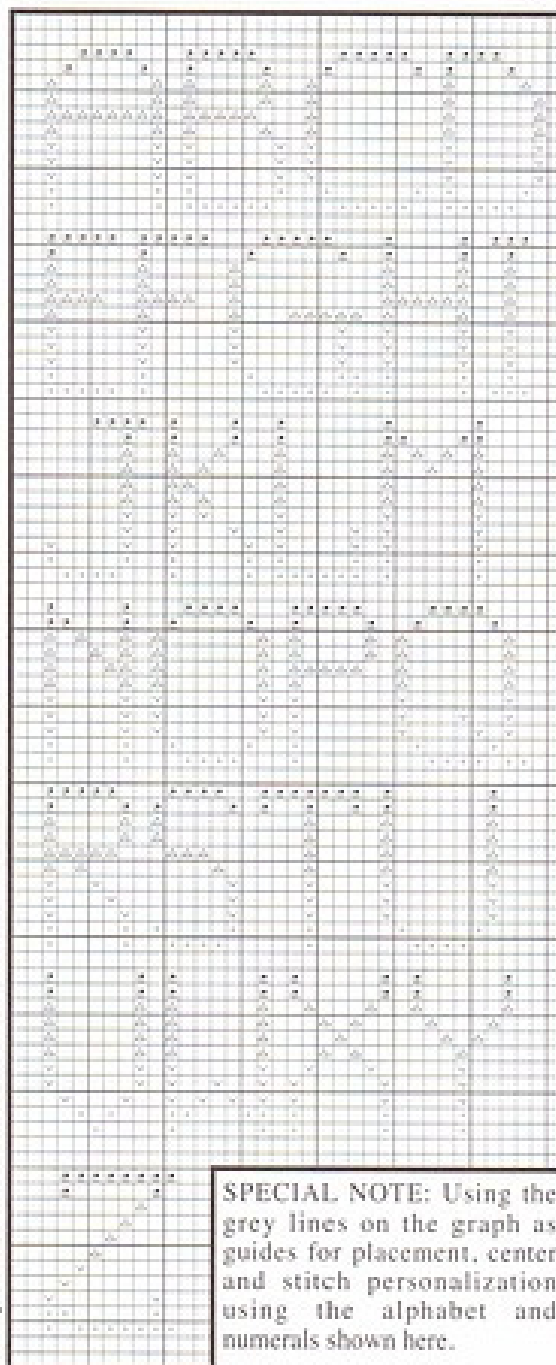
● 00557 gold

### Antique Glass Beads

⊙ 03049 rich red (28)

**SPECIAL NOTE:** The color list and special instructions are continued on page 16.

## Personalization Alphabet for "Christmas Lighthouse" Design.



**SPECIAL NOTE:** Using the grey lines on the graph as guides for placement, center and stitch personalization using the alphabet and numerals shown here.

## Christmas Lighthouse (cont)


**SPECIAL NOTE:** The dark grey shaded area of this graph is a duplication of symbols from the graph on page 14.

### MILL HILL (OPTIONAL)

#### Glass Treasures

-  12108 crystal star-gold tipped (1)
-  12165 small 5 pointed star- crystal bright (2)
-  12166 medium 5 pointed star- crystal bright (1)

#### Crystal Treasures

-  13005 margarita-siam (10)

### BIRDHOUSE ENTERPRISES

#### Charms

-  BE003 raised star (1)

Backstitch lines in railing at top of lighthouse printed in grey in ANCHOR 896/ DMC 3721.  
Backstitch rest of railing and other lines at top of lighthouse in ANCHOR 1027/ DMC 3722.  
Backstitch inside lines of windows on lighthouse in ANCHOR 897/ DMC 221.  
Backstitch vine and leaves in dove's beak in ANCHOR 266/ DMC 3347.  
All other backstitching is done in ANCHOR 382/ DMC 3371.

\* Use 1 strand of floss and 2 strands of GLISSENGLOSS™ 000 bright white Rainbow™ blending thread.

\*\* Use 1 strand of floss and 2 strands of GLISSENGLOSS™ 407 brass Rainbow™ blending thread.

\*\*\* Use 1 strand of floss and 2 strands of GLISSENGLOSS™ 617 red Rainbow™ blending thread.

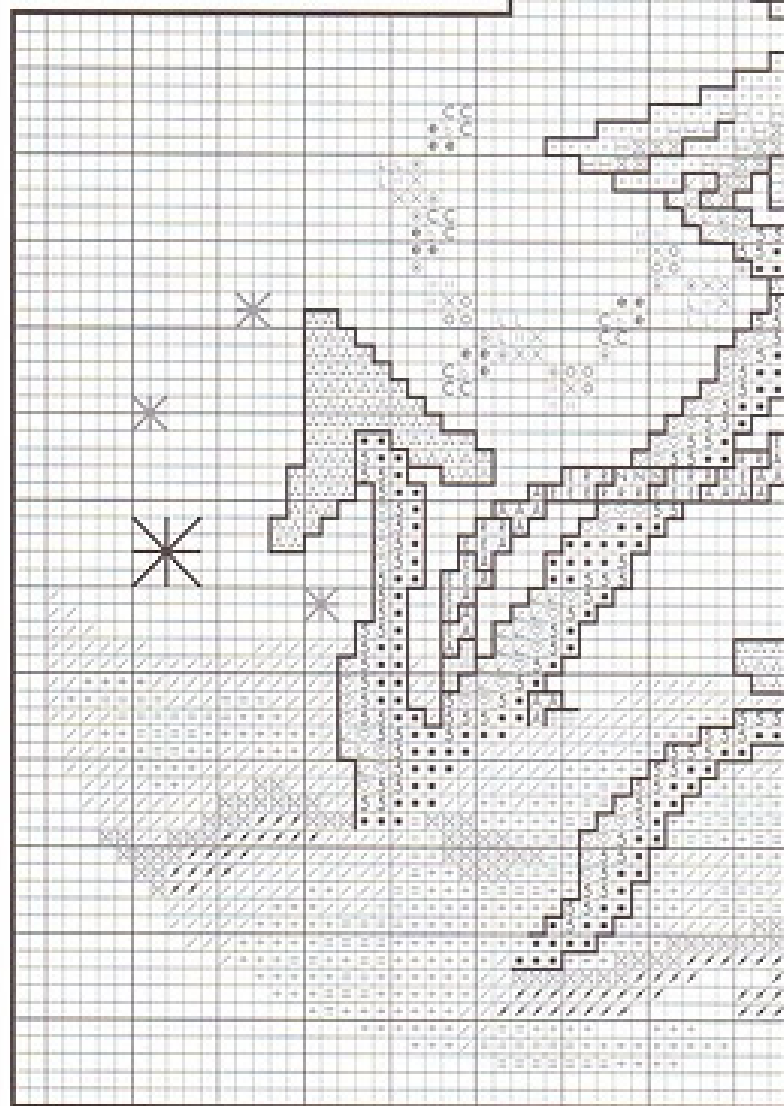
† Use 1 strand of floss and work 1/2 cross stitches.

**SPECIAL NOTE:** Work the Smyrna Cross Stitch for the extra large oversized symbols (✳) stitched over 4 squares with two strands each of ANCHOR 849/ DMC 927 and GLISSENGLOSS™ 000 bright white Rainbow™ Blending Thread. Smyrna Cross Stitch Variation instructions are found on page 17.

**SPECIAL NOTE:** Work the Smyrna Cross Stitch for the large oversized symbols (✳) stitched over 2 squares with two strands each of ANCHOR 870/ DMC 3042 and GLISSENGLOSS™ 000 bright white Rainbow™ Blending Thread.

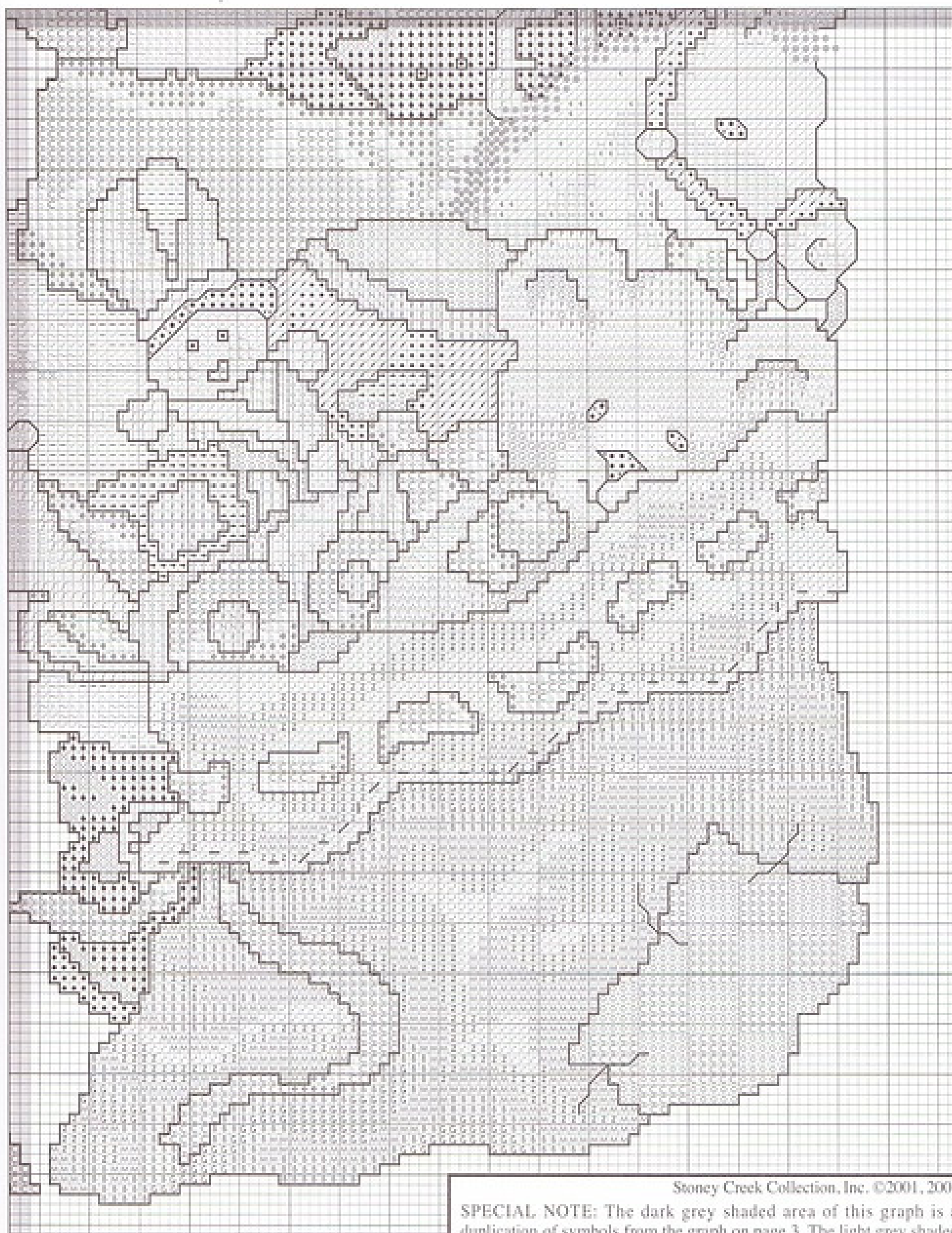
**SPECIAL NOTE:** We recommend washing and pressing your piece before attaching beads and charms. Attach black bead using 2 strands of ANCHOR 403/ DMC 310. Attach red beads and Crystal Treasure Margaritas using 2 strands of ANCHOR 1005/ DMC 816. Attach Glass Treasures stars using 2 strands of ANCHOR 01/ DMC white. Attach large gold-tipped Glass Treasure star using 2 strands of ANCHOR 907/ DMC 729. Attach BIRDHOUSE ENTERPRISES gold raised star charm with 2 strands of ANCHOR 907/ DMC 729 and a 00557 gold bead.

**SPECIAL NOTE:** The "garland" on the tree is created by using 2 strands of ANCHOR 907/ DMC 729 coming up at left bold yellow dots, stringing MILL HILL 00557 gold Seed Beads on to desired length and going down at right bold yellow dots. Tack down to create swagged look with 1 strand of ANCHOR 907/ DMC 729.



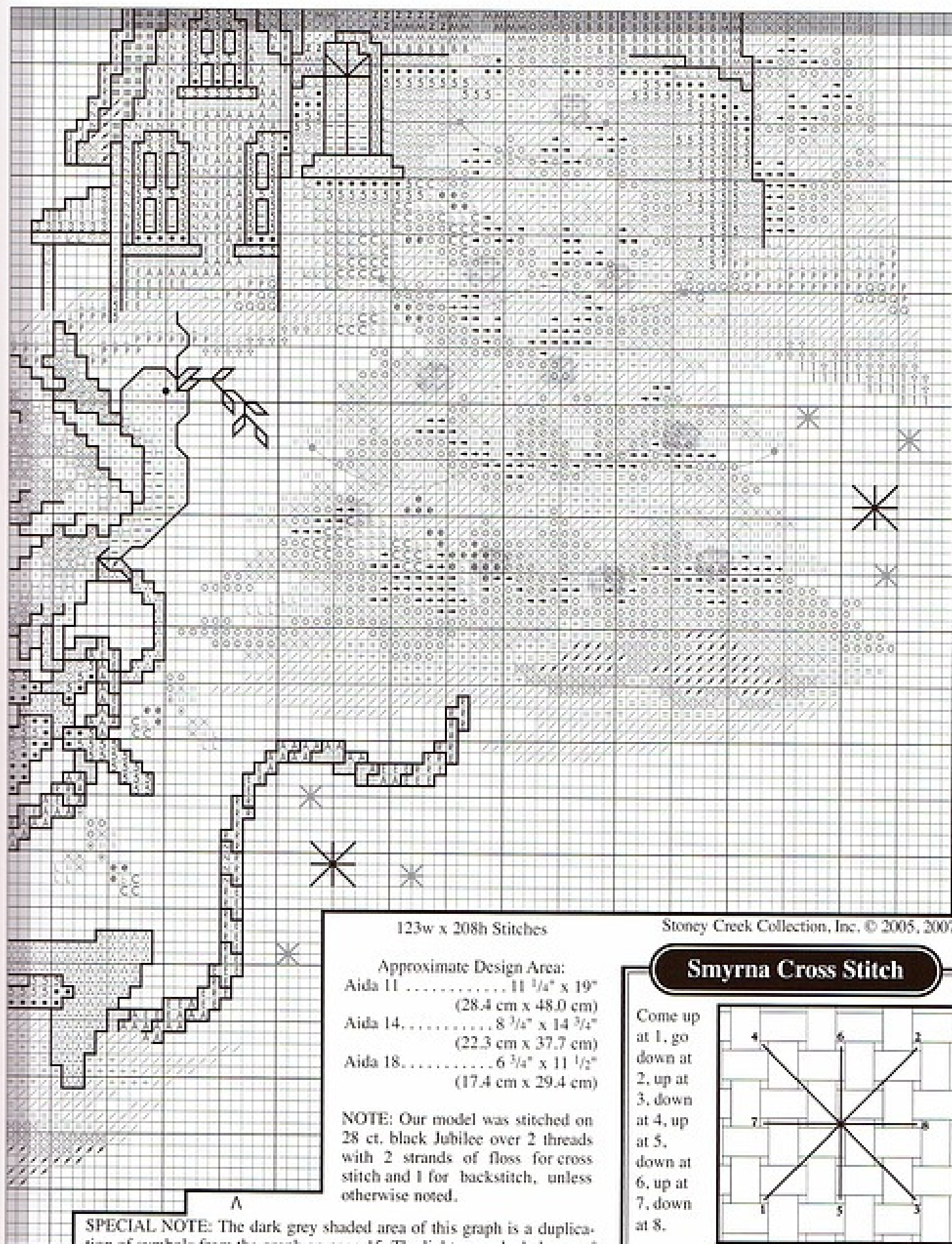
Stoney Creek Collection, Inc. © 2005, 2007





Stoney Creek Collection, Inc. ©2001, 2007

SPECIAL NOTE: The dark grey shaded area of this graph is a duplication of symbols from the graph on page 3. The light grey shaded area of this graph is a duplication of symbols from the graph on page 4.



123w x 208h Stitches

Stoney Creek Collection, Inc. © 2005, 2007

**Approximate Design Area:**

Aida 11 ..... 11 3/4" x 19"  
(28.4 cm x 48.0 cm)

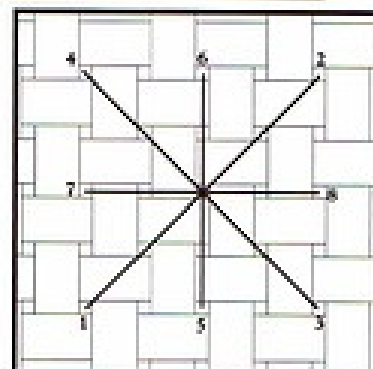
Aida 14 ..... 8 3/4" x 14 3/4"  
(22.3 cm x 37.7 cm)

Aida 18 ..... 6 3/4" x 11 1/2"  
(17.4 cm x 29.4 cm)

**NOTE:** Our model was stitched on 28 ct. black Jubilee over 2 threads with 2 strands of floss for cross stitch and 1 for backstitch, unless otherwise noted.

**Smyrna Cross Stitch**

Come up at 1, go down at 2, up at 3, down at 4, up at 5, down at 6, up at 7, down at 8.



**SPECIAL NOTE:** The dark grey shaded area of this graph is a duplication of symbols from the graph on page 15. The light grey shaded area of this graph is a duplication of symbols from the graph on page 16.

SPECIAL NOTE: The grey shaded area of this graph is a duplication of symbols from the graph on page 14.

V

NAME





## Mr. Santa

ANCHOR DMC  
Embroidery Thread

• 403	310	black
♥ 8	353	peach flesh med.
✓ 1012	754	peach flesh
^ 1011	948	peach flesh lt.
• 45	814	garnet med.
b 44	815	garnet
C 9046	321	Christmas red
o 218	319	grass green vy. dk.
× 217	367	grass green dk.
r 216	320	grass green med.
→ 267	3346	hunter green
z 150	311	navy blue
l 162	825	blue med.
Y 162**	825**	
† 161	826	blue
/ 160	813	blue lt.
• 102	550	violet vy. dk.
/ 110	208	lavender dk.
* 900	648	beaver grey lt.
H 847	3072	beaver grey vy. lt.
M 399	318	pewter grey lt.
= 398	415	pearl grey
+ 234	762	pearl grey lt.
/ 1	white	
- 1*	white*	
• 401	413	pewter grey dk.
Q 1046	435	brown med.
P 1045	436	brown
u 362	437	brown lt.
Δ 367	738	brown vy. lt.
v 366	739	brown ultra vy. lt.
- 926	712	cream
A 307	783	topaz med.
g 307***	783***	
Z 874*	676*	old gold vy. lt.
h 956*	677*	old gold ultra vy. lt.
E 302	743	tangerine vy. lt.
f 302***	743***	
R 301	744	yellow
N 300	745	yellow lt.
u 300***	745***	
Q 275*	746*	off white
G 393	640	beige grey dk.
B 392	642	beige grey med.
M 391	644	beige grey
Z 390	822	beige grey lt.
• 926	ecru	
✓ 2*	3865*	winter white
1013	3778	terra cotta lt.
382	3371	for backstitching
		coffee brown vy. dk.
		for backstitching

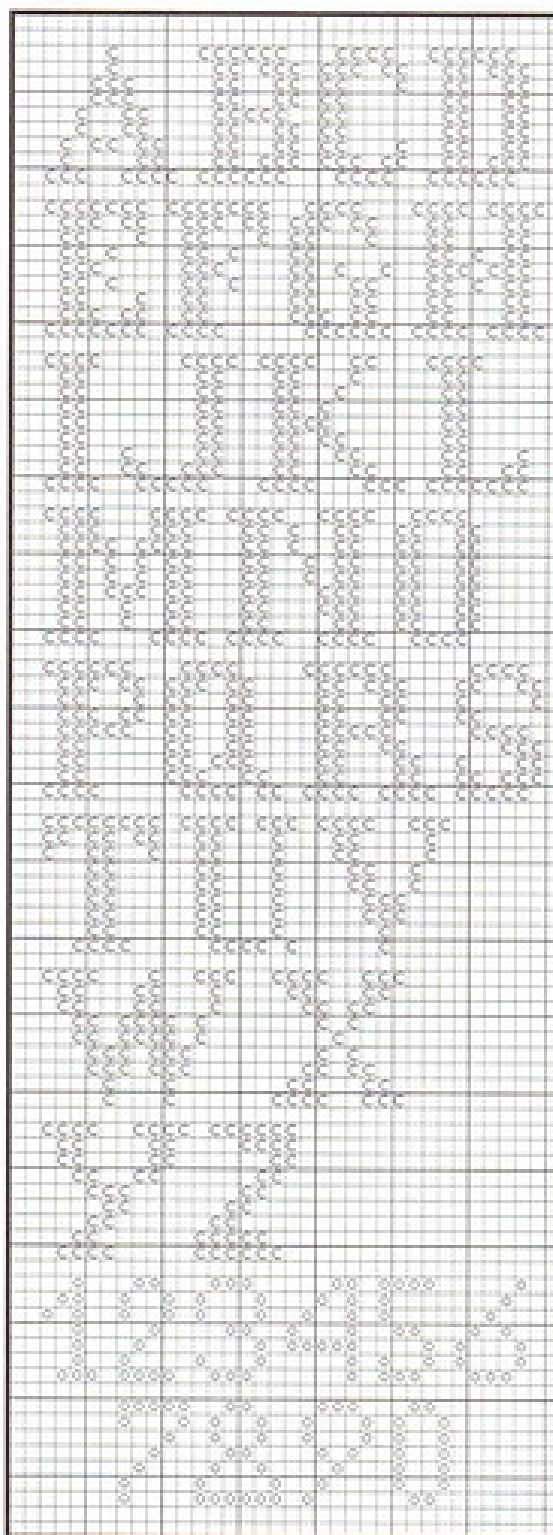
GLISSENGLOSS™

Rainbow™ Blending Thread

000	bright white
107	royal blue
407	brass

SPECIAL NOTE: The color list and special instructions are continued on page 4.

## Personalization Alphabet & Numerals for "Mr. Santa" Design.



Stoney Creek Collection, Inc. ©2001, 2007

SPECIAL NOTE: Using the grey lines on the graph as guides for placement, center and stitch personalization using the alphabet and numerals shown here.

Stoney Creek Collection, Inc. ©2001, 2007

YE