



# THE GOLD COLLECTION

TNMC

#70-08854

## Enchanted Ornaments Stocking

### STARTING

Prevent your fabric from fraying by overcasting the edges with your own sewing thread.

Find the center of your fabric by folding it in half vertically, then horizontally. Mark the center of your fabric with a piece of thread. This is your starting point.



Keep the fabric taut in a hoop or on a scroll frame. This allows you to keep the tension of your stitches light and even. If you use a hoop, be sure to remove it when you are not stitching so that it doesn't leave marks.

The needle is blunt so it slips easily through the fabric holes.

### STITCHING

**1 Look at the thread organizer.** For your convenience, we have presorted and organized the thread for you. Every color in the kit is included on the thread organizer. The organizer indicates the number of lengths and the code number for each color. Some colors may have too many lengths to fit on the organizer. In those instances, you will find one length of the color on the organizer and the remaining lengths in a separate bundle.

The lengths of red yarn will be used for the stocking hanger.

Cut one length of a color from the organizer (or pull one from the bundle) as you need it. **Use full lengths of thread for the tassel bundle.** For all other stitching, cut each length in half before using it so the strands don't knot or fray as you stitch.

Our colors are manufactured especially for us. They are custom dyed to match the original artwork. If you need more thread, contact us with the code number listed on the organizer.

**2 Separate the strands.** Separate each piece of cotton thread into six single strands before using it (we call them strands; some people call them ply). This will make your stitches lie flatter and look fuller.



Use the gold metallic thread as it comes. Do not separate into strands.

Put the number of strands you need for stitching back together. Thread them in your needle and leave a 3" tail on one side.



**3 Take a look at the chart and key.** Each stitch is shown on the chart by a symbol. Once you've located a symbol on your chart, find it in your key. The key tells you the color, stitch, and number of strands to use for each symbol.

The chart is sized to fit the page. It is not the same size as your fabric or finished design. Blank squares on the chart indicate unstitched fabric squares.

**4 Add the personalizing.** Selecting the letters from the alphabet, write the name on the grey line on the chart. Use the break in the line for centering. The Cross Stitches of the name will replace the stitches you blocked out.

**5 Take your first stitch.** Hold your fabric with the long sides running vertically. This will ensure that the design will be positioned properly on the fabric. Follow the arrows at the edge of the chart to where they meet. This starting point matches the center of your fabric that you marked with a piece of thread.

Selecting the nearest stitch to this starting point, identify the stitch, color, and number of strands using the key. A good symbol to start with would be the red ♥.

**6 Work the Cross Stitches.** Starting with that first stitch and working toward the edges, add all of the Cross and Half Cross Stitches of this design.

To add depth and shading to your design, some colors are combined in the needle. You will find the symbols for these stitches in the combined colors section of the key. For these stitches, thread your needle with both colors at the same time. Be sure to use the correct number of strands listed for each color.

**7 Add the details.** Add the other stitches in the order they are listed in the key.

### CLEANING

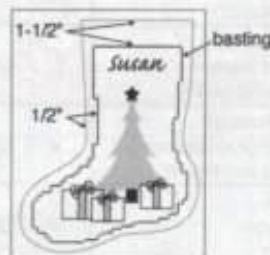
Hand wash in lukewarm water with mild dishwashing liquid. Do not use cleaners intended for fine washables or woolens. Do not bleach or dry clean. Dry flat. To press, lay stitching face down on a towel and use an iron set to medium.

### FINISHING

**NOTE:** Use your own sewing thread and a machine stitch unless otherwise indicated.

Referring to the chart for placement, hand baste the stocking outline around the stitched design.

Pencil a cutting line on the stocking front, working 1-1/2" from the basting at the top and 1/2" from the sides and bottom.

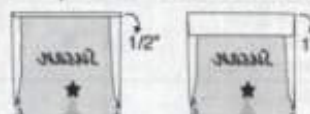


Cut out the stocking front. Fold the top of the stocking front down 1-1/2", then use it as a pattern to cut the stocking back from the felt.

Place the right sides of the stocking front and back together, aligning the toes. The stocking front will extend above the back. Leaving the top open, sew the stocking together with a 1/2" seam. Trim the seam allowance to 1/4", then clip small notches into the seam allowance around the toe and heel so the seam will lie flat when turned.

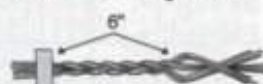


At the top of the stocking, press the side seam allowances toward the stocking front. This will create nicer finished edges at the top of your stocking. Keeping the seams folded in, press the top edge of the stocking 1/2" to the wrong side, then fold it over another 1" and press. Hand stitch the hem in place.



Turn the stocking right side out, then remove the basting stitches. Press the edges, using a pressing cloth to protect your stocking.

To make the braided hanger for your stocking, cut all five lengths of red yarn in half. Lay nine of the pieces side by side. Tape one end to a table or counter as shown. Divide them into three equal groups, then braid them to create a 6" long braid.



Remove the tape and fold the braid in half. Knot the loose ends together just below the braid. Trim the ends. Hand stitch the hanger to the side of the stocking.



# KEY • LÉGENDE • CLAVE



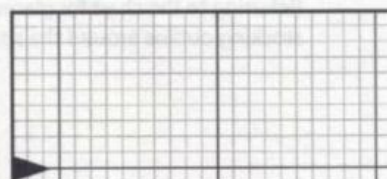
Code • Code • Código	Color • Couleur • Color	Cross Stitch • Point de croix Punto de cruz (strands • brins • hebras)	Half Cross Stitch • Demi point de croix • Medio punto de cruz (strands • brins • hebras)
13868	Peach Pêche Melocotón	✓ (2)	
13008	Salmon pink Rose saumon Rosado salmón	⋈ (2)	
12334	Red orange Orange rougeâtre Rojo anaranjado	u (2)	
13046	Red Rouge Rojo	♥ (2)	
13013	Dk. red Rouge foncé Rojo oscuro	⊙ (2)	
11814	Maroon Rouge-brun Castaño	K (2)	
12296	Lt. yellow Jaune clair Amarillo claro	i (2)	
16250	Pale yellow green Vert jaune pâle Verde amarillento pálido	M (2)	2 (2)
16253	Lt. yellow green Vert jaune clair Verde amarillento claro	\$ (2)	
6051	Lt. green Vert clair Verde claro	∞ (2)	G (2)
6049	Green Vert Verde	♣ (2)	
6504	Pale grey green Vert gris pâle Verde grisáceo pálido	R (2)	
16879	Lt. grey green Vert gris clair Verde grisáceo claro	⊗ (2)	♥ (2)
16876	Grey green Vert gris Verde grisáceo	◆ (2)	
6195	Blue green Vert d'outremer Verde azulado	♣ (2)	
16880	Dk. blue green Vert d'outremer foncé Verde azulado oscuro	⊗ (2)	
17167	Lt. turquoise Turquoise clair Azul turquesa claro		⊗ (1) ⊗ (4)
17226	Grey blue Bleu gris Azul grisáceo		← (4)
12305	Lt. gold Or clair Oro claro	combined colors only couleurs combinées seulement colores combinados solamente	
15351	Gold Or Oro	combined colors & details couleurs combinées et détails colores combinados y detalles	

Code • Code • Código	Color • Couleur • Color	Cross Stitch • Point de croix Punto de cruz (strands • brins • hebras)	Half Cross Stitch • Demi point de croix • Medio punto de cruz (strands • brins • hebras)
15371	Antique gold Or antique Oro antiguo	✓ (2)	
12275	Ivory Ivoire Marfil	π (2)	
15372	Lt. tan Brun beige clair Tostado claro	C (2)	
15388	Khaki Kaki Caqui	combined colors only couleurs combinées seulement colores combinados solamente	
15898	Dk. khaki Kaki foncé Caqui oscuro	▲ (2)	
6096	Lt. gold brown Brun doré clair Marrón dorado claro	Σ (2)	
15000	Gold brown Brun doré Marrón dorado	★ (2)	
15576	Pale brown Brun pâle Marrón pálido	☆ (2)	
15376	Lt. brown Brun clair Marrón claro	B (2)	
15360	Dk. brown Brun foncé Marrón oscuro	S (2)	
18403	Black Noir Negro	U (2)	
11001	White Blanc Blanco		□ (3)
OGOLG	Gold metallic* Or métallique* Metálico dorado*	combined colors & details couleurs combinées et détails colores combinados y detalles	
R10	Red yarn Fil de laine rouge Hilo de lana rojo	stocking hanger cintre du bas colgante del calcetín	

\*Don't separate the strands.

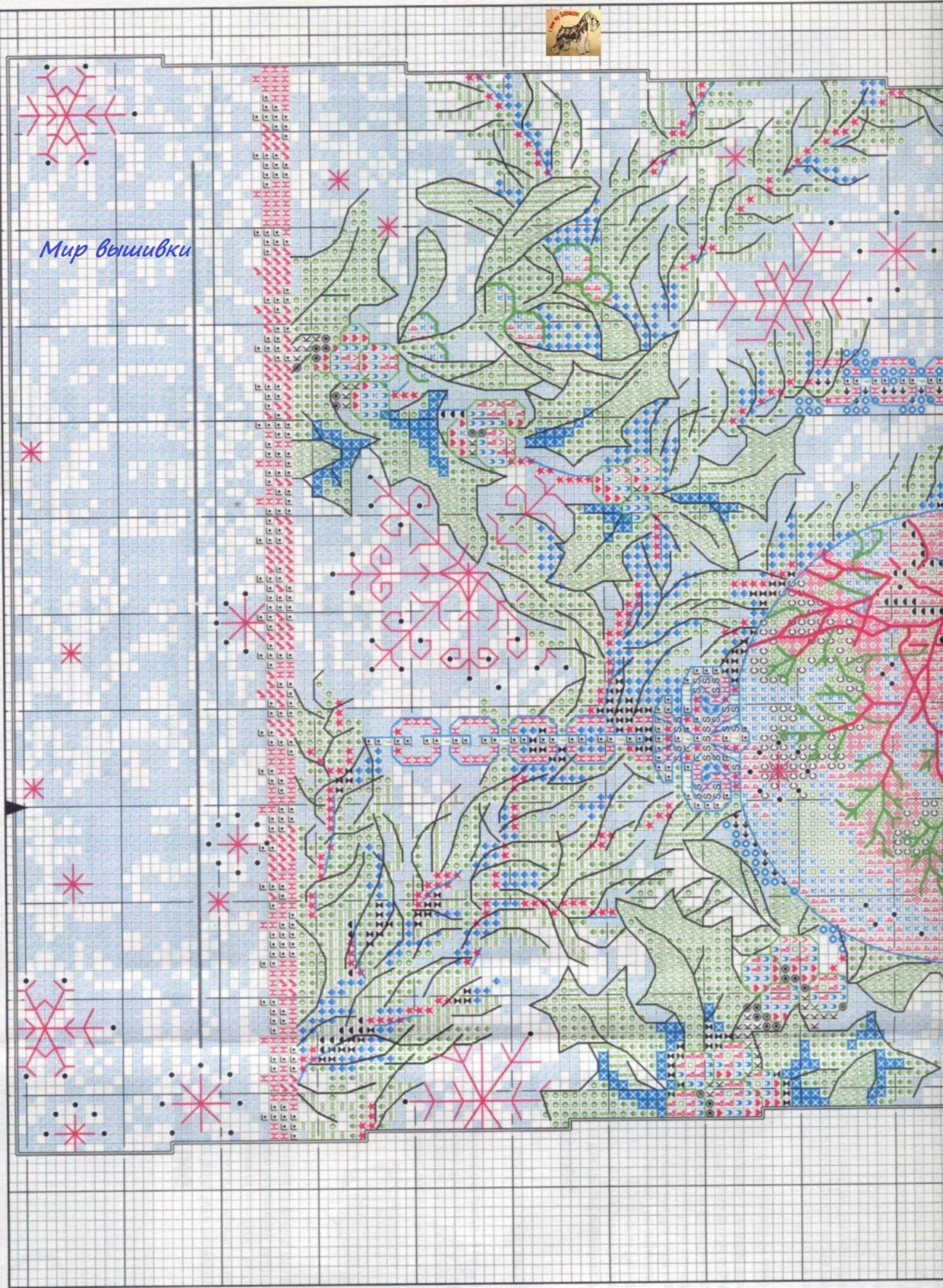
\*Ne séparez pas les brins.

\*No separe las hebras.

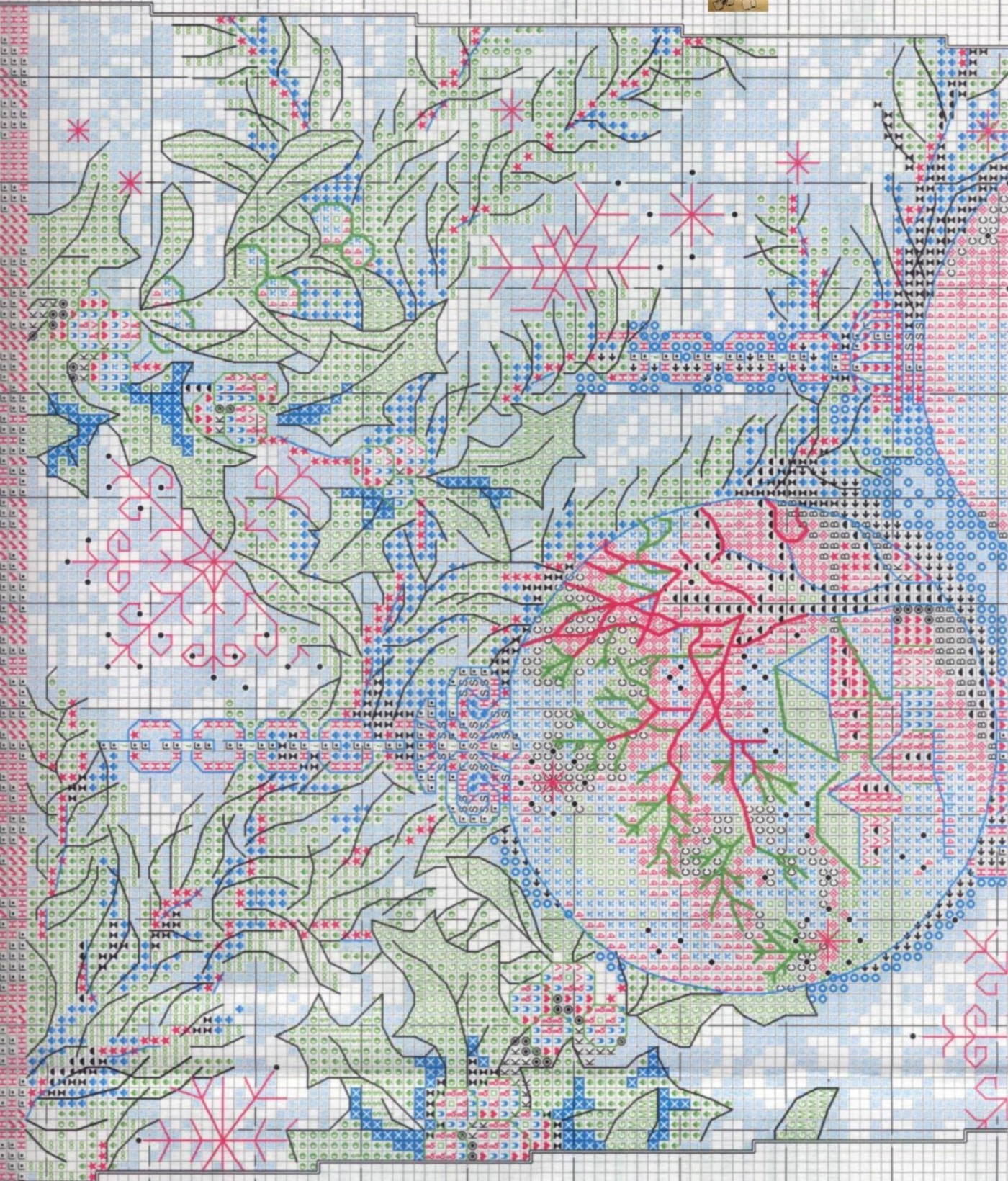




Мир вышивки









# KEY • LÉGENDE • CLAVE

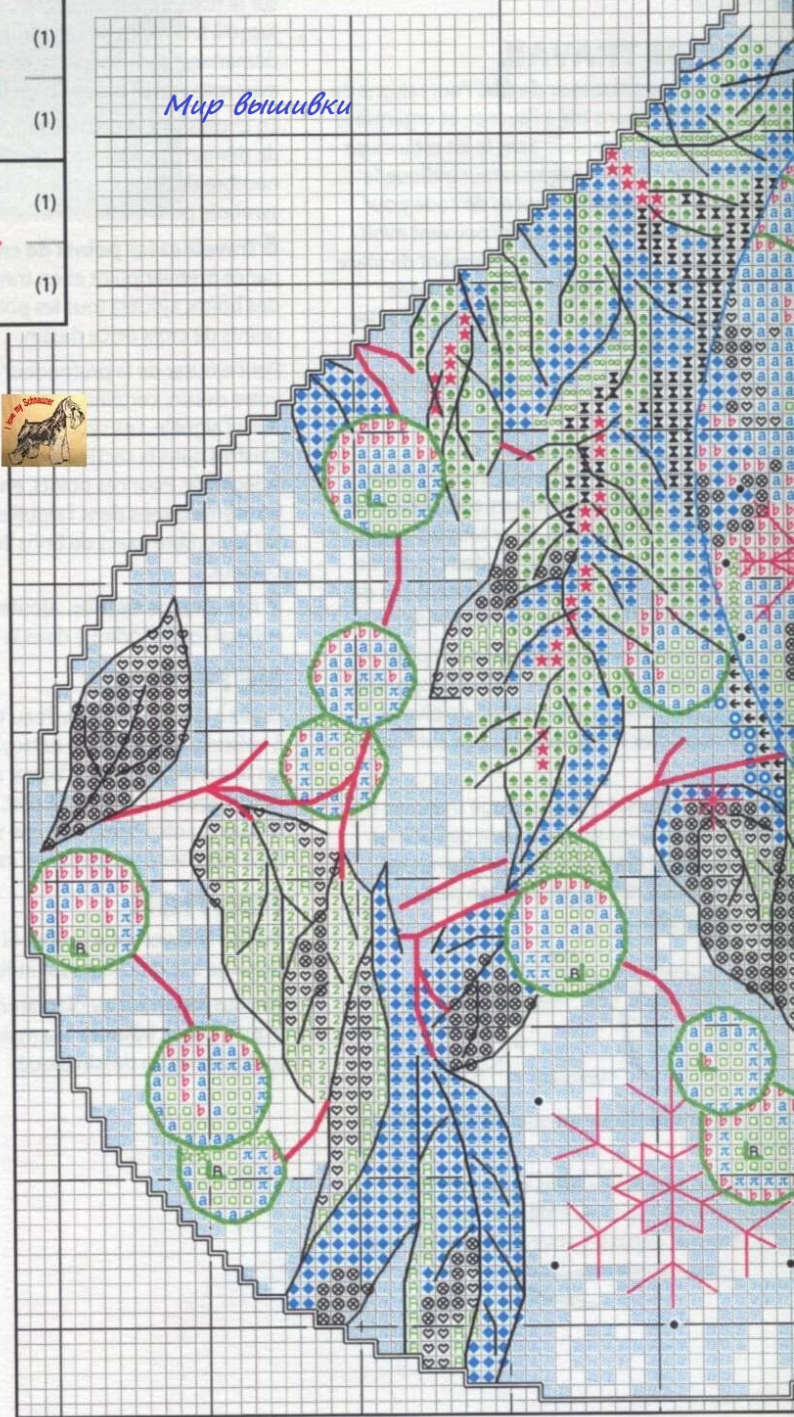
Code • Code • Código	Color • Couleur • Color	Cross Stitch • Point de croix Punto de cruz (strands • brins • hebras)
<b>Combined Colors Couleurs combinées Colores combinados</b>		
16253	Lt. yellow green Vert jaune clair Verde amarillento claro	(1)
6051	Lt. green Vert clair Verde claro	(1)
16880	Dk. blue green Vert d'outremer foncé Verde azulado oscuro	(1)
18403	Black Noir Negro	(1)
OGOLG	Gold metallic Or métallique Metálico dorado	(2)
12305	Lt. gold Or clair Oro claro	(2)

Code • Code • Código	Color • Couleur • Color	Cross Stitch • Point de croix Punto de cruz (strands • brins • hebras)
<b>Combined Colors Couleurs combinées Colores combinados</b>		
OGOLG	Gold metallic Or métallique Metálico dorado	(2)
15351	Gold Or Oro	(2)
12275	Ivory Ivoire Marfil	(1)
15372	Lt. tan Brun beige clair Tostado claro	(1)
15372	Lt. tan Brun beige clair Tostado claro	(1)
15388	Khaki Kaki Caqui	(1)

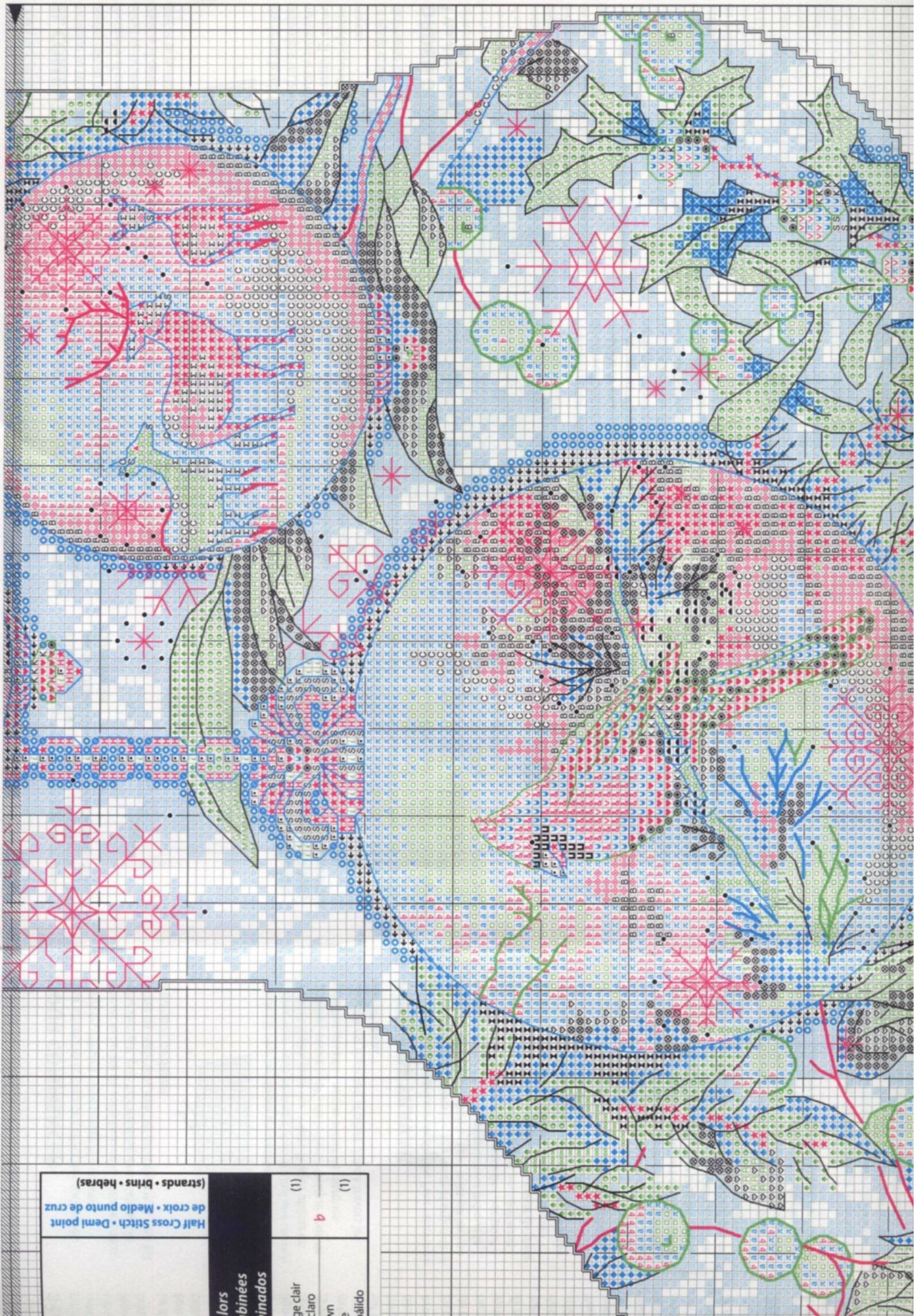
Code • Code • Código	Color • Couleur • Color	Half Cross Stitch • Demi point de croix • Medio punto de cruz (strands • brins • hebras)
<b>Combined Colors Couleurs combinées Colores combinados</b>		
15372	Lt. tan Brun beige clair Tostado claro	(1)
15576	Pale brown Brun pâle Marrón pálido	(1)

Code • Code • Código	Color • Couleur • Color	Back Stitch • Point arrière Punto atrás (strands • brins • hebras)	French Knot • Point de noeud Nudo francés (strands • brins • hebras)	Tassel • Gland • Borla (strands • brins • hebras)
<b>Details • Détails • Detalles</b>				
16880	Dk. blue green Vert d'outremer foncé Verde azulado oscuro	(1)		
11814	Maroon Rouge-brun Castaño	(1)		
13013	Dk. red Rouge foncé Rojo oscuro	(2)		
16879	Lt. grey green Vert gris clair Verde grisáceo claro	(1)		
15360	Dk. brown Brun foncé Marrón oscuro	(1)	(2)	
15898	Dk. khaki Kaki foncé Caqui oscuro	(1)		
11001	White Blanc Blanco	(2)	(2)	
15351	Gold Or Oro			(18)
OGOLG	Gold metallic Or métallique Metálico dorado			(4)

Мур вышивки







Half Cross Stitch • Demi point  
de croix • Medio punto de cruz

(strands • brins • hebras)

lors  
binées  
inados

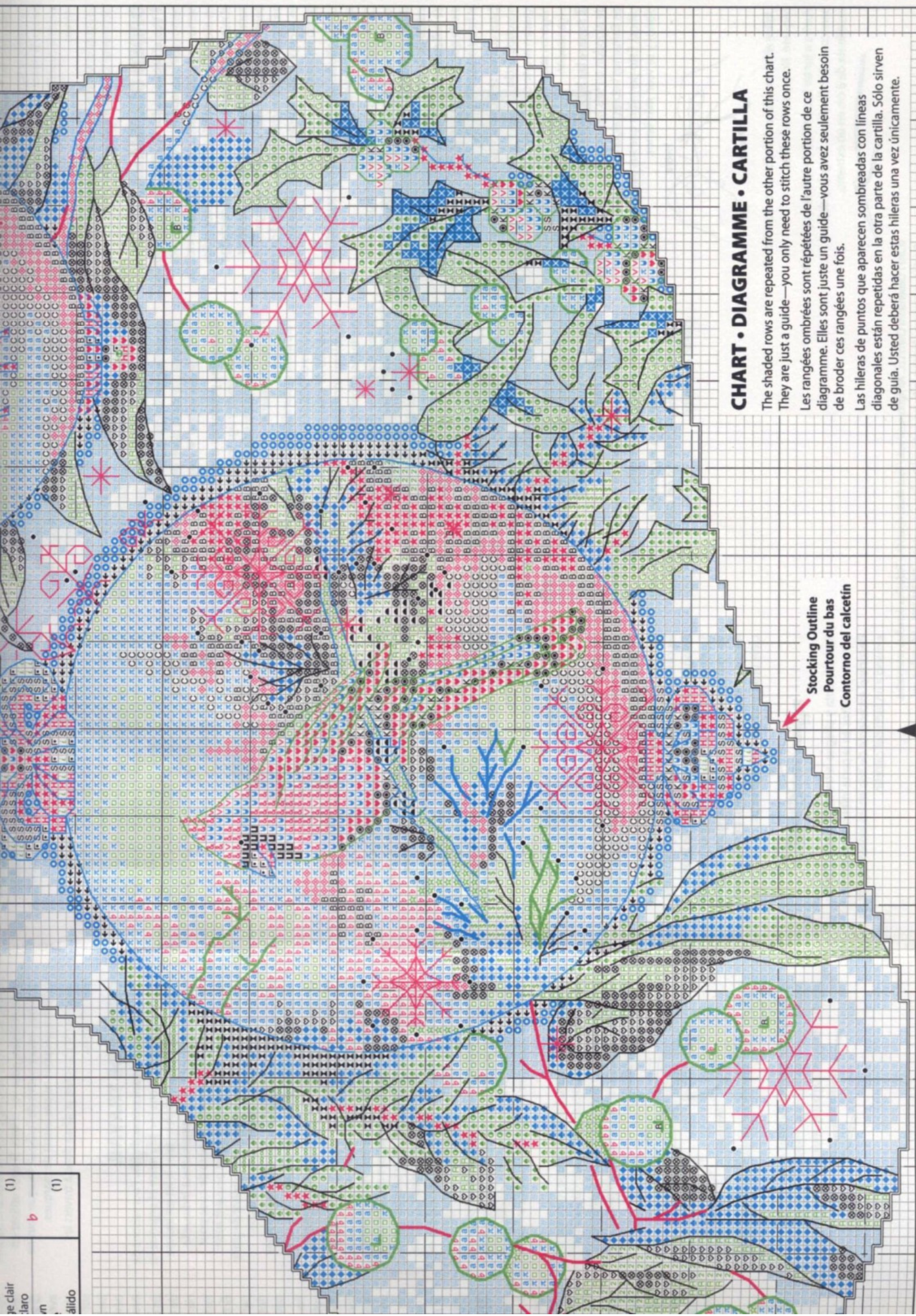
ge clair  
claro  
wn  
e  
lálido

(1)

6

(1)





# CHART • DIAGRAMME • CARTILLA

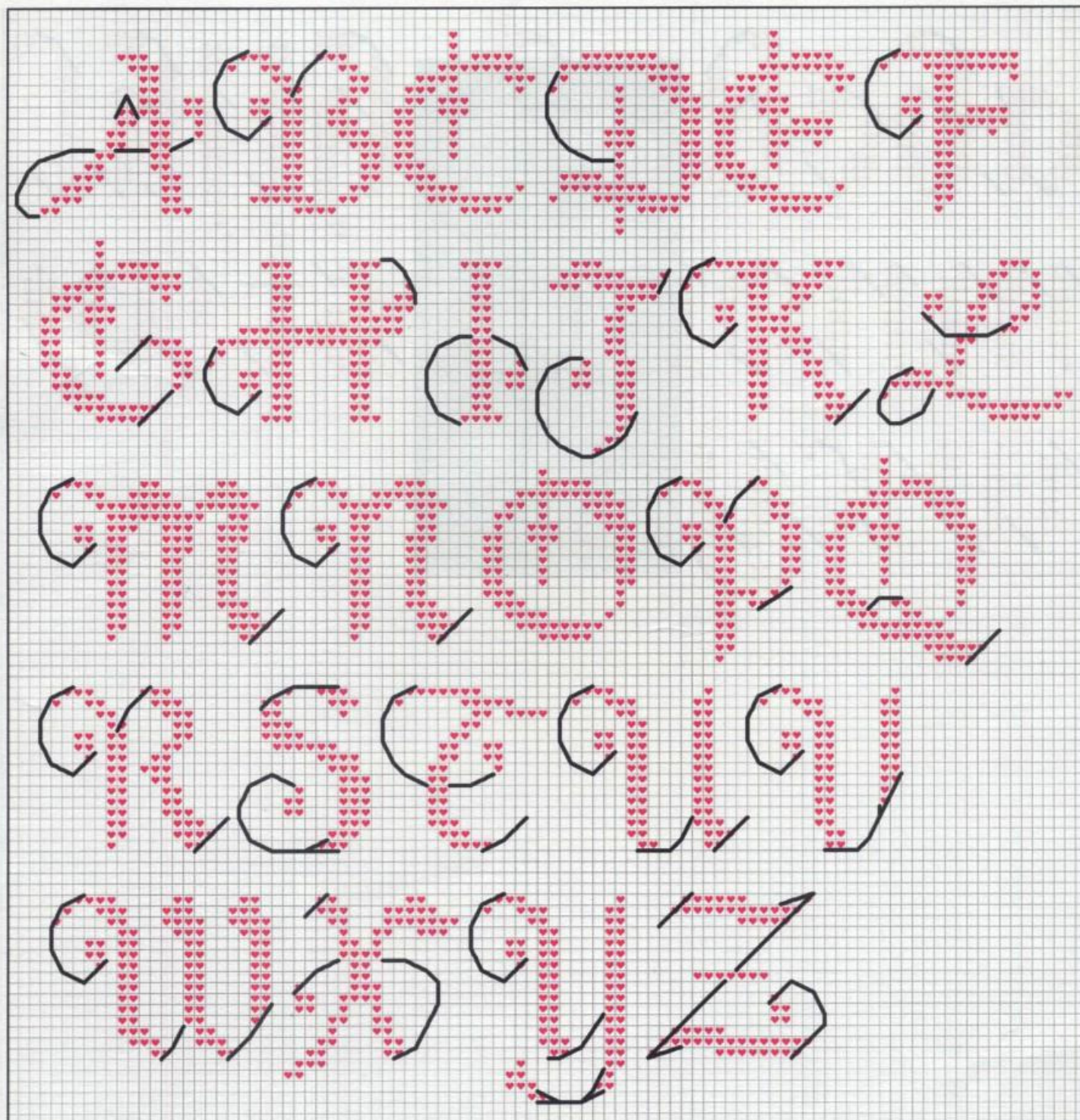
The shaded rows are repeated from the other portion of this chart. They are just a guide—you only need to stitch these rows once.

Les rangées ombrées sont répétées de l'autre portion de ce diagramme. Elles sont juste un guide—vous avez seulement besoin de broder ces rangées une fois.

Las hileras de puntos que aparecen sombreadas con líneas diagonales están repetidas en la otra parte de la cartilla. Sólo sirven de guía. Usted deberá hacer estas hileras una vez únicamente.

Stocking Outline  
Pourtour du bas  
Contorno del calcetín





**DIMENSIONS**  
needlecrafts

[www.dimensions-crafts.com](http://www.dimensions-crafts.com)



