

Alma Lynne

DESIGNS

THE CALENDAR SANTAS

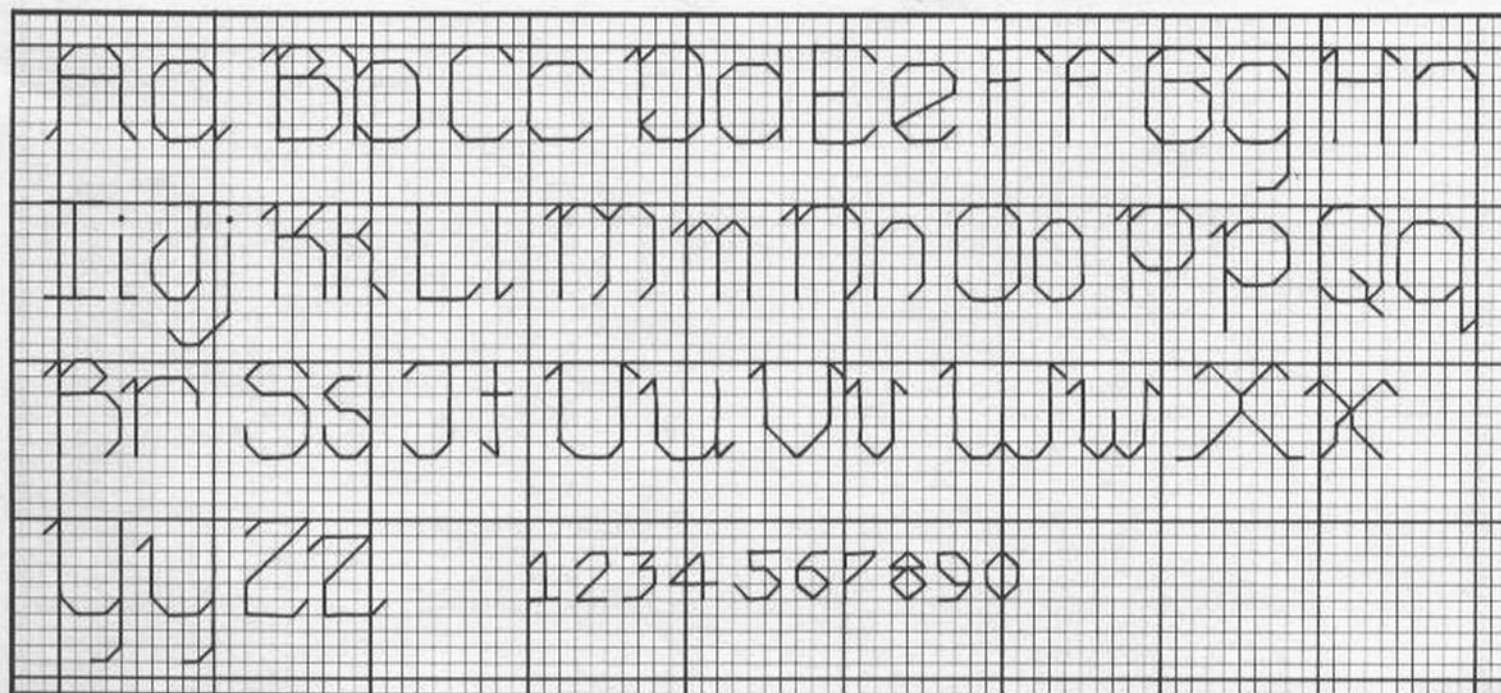


• Counted Cross Stitch •

Table of Contents

January Santa	2
February Santa	3
March Santa	4
April Santa	5
May Santa	6
June Santa	7
July Santa	8
August Santa	9
September Santa	10
October Santa	11
November Santa	12
December Santa	Inside Back Cover

Happy New Year



A complex grid-based puzzle or map. The grid is filled with various letters (A, B, C, D, E, F, G, H, I, J, K, L, M, N, O, P, Q, R, S, T, U, V, W, X, Y, Z) and symbols (dots, crosses, and other small marks). The letters are arranged in a way that suggests a hidden message or a specific pattern. The symbols are scattered throughout the grid, often appearing in clusters or along specific paths. The overall layout is intricate and requires careful observation to decipher.

Special Instructions:

BACKSTITCH: FRENCH KNOTS:

Eyes—798.

• Berries in wreath—814.

1. Fill in banner with white, then backstitch

HAPPY NEW YEAR—814 w/Balger®

Crimson 031.

DIMENSIONS

Fabric Count	Design Area	Cutting Dimensions
22	2½ x 3¼	8½ x 9¼
18	3 x 4	9 x 10
14	3¾ x 5½	9¾ x 11½
11	5 x 6½	11 x 12½

72 54

DMC J.P. COATS
COLORS

White 1001

309 3284

353 3006

5393

642

644

754

758

762

776

798

822

899

924

926

927

928

948

3031

3326

Balger® 031

Crimson w/DMC 309

(2 strands)

(1 strand)

Deep Rose

Peach Flesh

Vy. Dk. Beige Grey

Dk. Beige Grey

Med. Beige Grey

Lt. Peach Flesh

Lt. Terra Cotta

Vy. Lt. Pearl Grey

Med. Pink

Dk. Delft

Lt. Beige Grey

Med. Rose

Vy. Dk. Grey Green

Dk. Grey Green

Med. Grey Green

Lt. Grey Green

Vy. Lt. Peach Flesh

Vy. Dk. Mocha Brown

Lt. Rose

/ 1 2 3 4 5 6 7 8 9 10 11 12 13 14 15 16 17 18 19 20 21 22 23 24 25 26 27 28 29 30 31 32 33 34 35 36 37 38 39 40 41 42 43 44 45 46 47 48 49 50 51 52 53 54 55 56 57 58 59 60 61 62 63 64 65 66 67 68 69 70 71 72 73 74 75 76 77 78 79 80 81 82 83 84 85 86 87 88 89 90 91 92 93 94 95 96 97 98 99 100

Special Instructions:

BACKSTITCH:

All hearts, pants and shirt—309.

Eyes—3031.

Eyebrows—640.

Arrows—Balger® 031 w/DMC 309 (1 strand each).

All else—3031.

NOTE: When stitching on afghan use 2 strands Balger w/1 strand DMC 1. French knots for eyes—798.

DIMENSIONS

Fabric Count	Design Area	Cutting Dimensions
22	2 5/8 x 3 1/4	8 5/8 x 9 1/4
18	3 1/4 x 4	9 1/4 x 10
14	4 1/8 x 5	10 1/8 x 11
11	5 1/4 x 6 1/2	11 1/4 x 12 1/2

71

58

March

DMC J.P. COATS
COLORS COLORS

X	3	4	5	6	7	8	9	10	11	12	13	14	15	16	17	18	19	20	21	22	23	24	25	26	27	28	29	30	31	32	33	34	35	36	37	38	39	40	41	42	43	44	45	46	47	48	49	50	51	52	53	54	55	56	57	58	59	60	61	62	63	64	65	66	67	68	69	70	71	72	73	74	75	76	77	78	79	80	81	82	83	84	85	86	87	88	89	90	91	92	93	94	95	96	97	98	99	100	101																																																																																																																																																																																																																																																																																																																																																																																																																																																																																																																																																																																																																																																																																																																																																																																																																																																																																																																																																																																																																																																																																																																																																																																																																																																																																																																																																																																																		
White	353	498	644	545	646	647	754	762	798	814	816	822	844	902	909	910	911	912	930	931	932	948	3031	3371	353	498	644	545	646	647	754	762	798	814	816	822	844	902	909	910	911	912	930	931	932	948	3031	3371	353	498	644	545	646	647	754	762	798	814	816	822	844	902	909	910	911	912	930	931	932	948	3031	3371	353	498	644	545	646	647	754	762	798	814	816	822	844	902	909	910	911	912	930	931	932	948	3031	3371	353	498	644	545	646	647	754	762	798	814	816	822	844	902	909	910	911	912	930	931	932	948	3031	3371	353	498	644	545	646	647	754	762	798	814	816	822	844	902	909	910	911	912	930	931	932	948	3031	3371	353	498	644	545	646	647	754	762	798	814	816	822	844	902	909	910	911	912	930	931	932	948	3031	3371	353	498	644	545	646	647	754	762	798	814	816	822	844	902	909	910	911	912	930	931	932	948	3031	3371	353	498	644	545	646	647	754	762	798	814	816	822	844	902	909	910	911	912	930	931	932	948	3031	3371	353	498	644	545	646	647	754	762	798	814	816	822	844	902	909	910	911	912	930	931	932	948	3031	3371	353	498	644	545	646	647	754	762	798	814	816	822	844	902	909	910	911	912	930	931	932	948	3031	3371	353	498	644	545	646	647	754	762	798	814	816	822	844	902	909	910	911	912	930	931	932	948	3031	3371	353	498	644	545	646	647	754	762	798	814	816	822	844	902	909	910	911	912	930	931	932	948	3031	3371	353	498	644	545	646	647	754	762	798	814	816	822	844	902	909	910	911	912	930	931	932	948	3031	3371	353	498	644	545	646	647	754	762	798	814	816	822	844	902	909	910	911	912	930	931	932	948	3031	3371	353	498	644	545	646	647	754	762	798	814	816	822	844	902	909	910	911	912	930	931	932	948	3031	3371	353	498	644	545	646	647	754	762	798	814	816	822	844	902	909	910	911	912	930	931	932	948	3031	3371	353	498	644	545	646	647	754	762	798	814	816	822	844	902	909	910	911	912	930	931	932	948	3031	3371	353	498	644	545	646	647	754	762	798	814	816	822	844	902	909	910	911	912	930	931	932	948	3031	3371	353	498	644	545	646	647	754	762	798	814	816	822	844	902	909	910	911	912	930	931	932	948	3031	3371	353	498	644	545	646	647	754	762	798	814	816	822	844	902	909	910	911	912	930	931	932	948	3031	3371	353	498	644	545	646	647	754	762	798	814	816	822	844	902	909	910	911	912	930	931	932	948	3031	3371	353	498	644	545	646	647	754	762	798	814	816	822	844	902	909	910	911	912	930	931	932	948	3031	3371	353	498	644	545	646	647	754	762	798	814	816	822	844	902	909	910	911	912	930	931	932	948	3031	3371	353	498	644	545	646	647	754	762	798	814	816	822	844	902	909	910	911	912	930	931	932	948	3031	3371	353	498	644	545	646	647	754	762	798	814	816	822	844	902	909	910	911	912	930	931	932	948	3031	3371	353	498	644	545	646	647	754	762	798	814	816	822	844	902	909	910	911	912	930	931	932	948	3031	3371	353	498	644	545	646	647	754	762	798	814	816	822	844	902	909	910	911	912	930	931	932	948	3031	3371	353	498	644	545	646	647	754	762	798	814	816	822	844	902	909	910	911	912	930	931	932	948	3031	3371	353	498	644	545	646	647	754	762	798	814	816	822	844	902	909	910	911	912	930	931	932	948	3031	3371	353	498	644	545	646	647	754	762	798	814	816	822	844	902	909	910	911	912	930	931	932	948	3031	3371	353	498	644	545	646	647	754	762	798	814	816	822	844	902	909	910	911	912	930	931	932	948	3031	3371	353	498	644	545	646	647	754	762	798	814	816	822	844	902	909	910	911	912	930	931	932	948	3031	3371	353	498	644	545	646	647	754	762	798	814	816	822	844	902	909	910	911	912	930	931	932	948	3031	3371	353	498	644	545	646	647	754	762	798	814	816	822	844	902	909	910	911	912	930	931	932	948	3031	3371	353	498	644	545	646	647	754	762	798	814	816	822	844	902	909	910	911	912	930	931	932	948	3031	3371	353	498	644	545	646	647	754	762	798	814	816	822	844	902	909	910	911	912	930	931	932	948	3031	3371	353	498	644	545	646	647	754	762	798	814	816	822	844	902	909	910	911	912	930	931	932	948	3031	3371	353	498	644	545	646	647	754	762	798	814	816	822	844	902	909	910	911	912	930	931	932	948	3031	3371	353	498	644	545	646	647	754	762	798	814	816	822	844	902	909	910	911	912	930	931	932	948	3031	3371	353	498	644	545	646	647	754	762	798	814	816	822	844	902	909	910	911	912	930	931	932	948	3031	3371	353	498	644	545	646	647	754	762	798	814	816	822	844	902	909	910	911	912	930	931	932	948	3031	3371	353	498	644	545	646	647	754	762	798	814	816	822	844	902	909	910	911	912	930	931	932	948	3031	3371	353	498	644	545	646	647	754	762	798	814	816	822	844	902	909	910	911	912	930	931	932	948	3031	3371	353	498	644	545	646	647	754	762	798	814	816	822	844	902	909	910	911	912	930	931	932	948	3031	3371	353	498	644	545	646	647	754	762	798	814	816	822	844	902	909	910	911	912	930	931	932	948	3031	3371	353	498	644	545	646	647	754	762	798	814	816	822	844	902	909	910	911	912	930	931	932	948	3031	3371	353	498	644	545	646	647	754	762	798	814	816	822	844	902	909	910	911	912	930	931	932	948	3031	3371	353	498	644	545	646	647	754	762	798	814	816	822	844	902	909	910	911	912	930	931	932	948	3031	3371	353	498	644	545	646	647	754	762	798	814	816	822	844	902	909	910	911	912	930	931	932	948	3031	3371	353	498	644	545	646	647	754	762	798	814	816	822	844	902	909	910	911	912	930	931	932	948	3031	3371	353	498	644	545	646	647	754	762	798	814	816	822	844	902	909	910	911	912	930	931	932	948	3031	3371	353	498	644	545	646	647	754	762	798	814	816	822	844	902	909	910	911	912	930	931	932	948	3031	3371	353	498	644	545	646	647	754	762	798	814	816	822	844	902	909	910	911	912	930	931	932	948	3031	3371	353	498	644	545	646	647	754	762	798	814	816	822	844	902	909	910	911	912	930	931	932	948	3031	3371	353	498	644	545	646	647	754	762	798	814	816	822	844	902	909	910	911	912	930	931	932	948	3031	3371	353	498	644	545	646	647	754	762	798	814	816	822	844	902	909	910	911	912	930	931	932	948	3031	3371	353	498	644	545	646	647	754	762	798	814	816	822	844	902	909	910	911	912	930	931	932	948	3031	3371	353	498	644	545	646	647	754	762	798	814	816	822	844	902	909	910	911	912	930	931	932	948	3031	3371	353	498	644	545	646	647	754	762	798	814	816	822	844	902	909	910	911	912	930	931	932	948	3031	3371	353	498	644	545	646

White	1001	Peach Flesh
353	3006	Dk. Christmas Red
498	3410	Med. Beige Grey
644	8501	Vy. Dk. Beaver Grey
645	8500	Dk. Beaver Grey
646	8500	Med. Beaver Grey
647	8900	Lt. Peach Flesh
754	2331	Vy. Lt. Pearl Grey
762	8510	Dk. Delft
798	7022	Dk. Garnet
814	3044	Garnet
816	3410	—
822	—	Lt. Beige Grey
844	8501	Ultra Dk. Beaver Grey
902	3083	Vy. Dk. Garnet
909	6228	Vy. Dk. Emerald Green
910	6031	Dk. Emerald Green
911	6205	Med. Emerald Green
912	6205	Lt. Emerald Green
930	7052	Dk. Antique Blue
931	7051	Med. Antique Blue
932	7050	Lt. Antique Blue
948	2331	Vy. Lt. Peach Flesh
3031	5472	Vy. Dk. Mocha Brown
3371	5478	Black Brown

Special Instructions:

BACKSTITCH:

Beard and eyebrows—3031.

Santa's eyelash—798.

Cross stitch boots, then backstitch laces with long, running stitches—3371. Tie floss bow on both boots—3371.

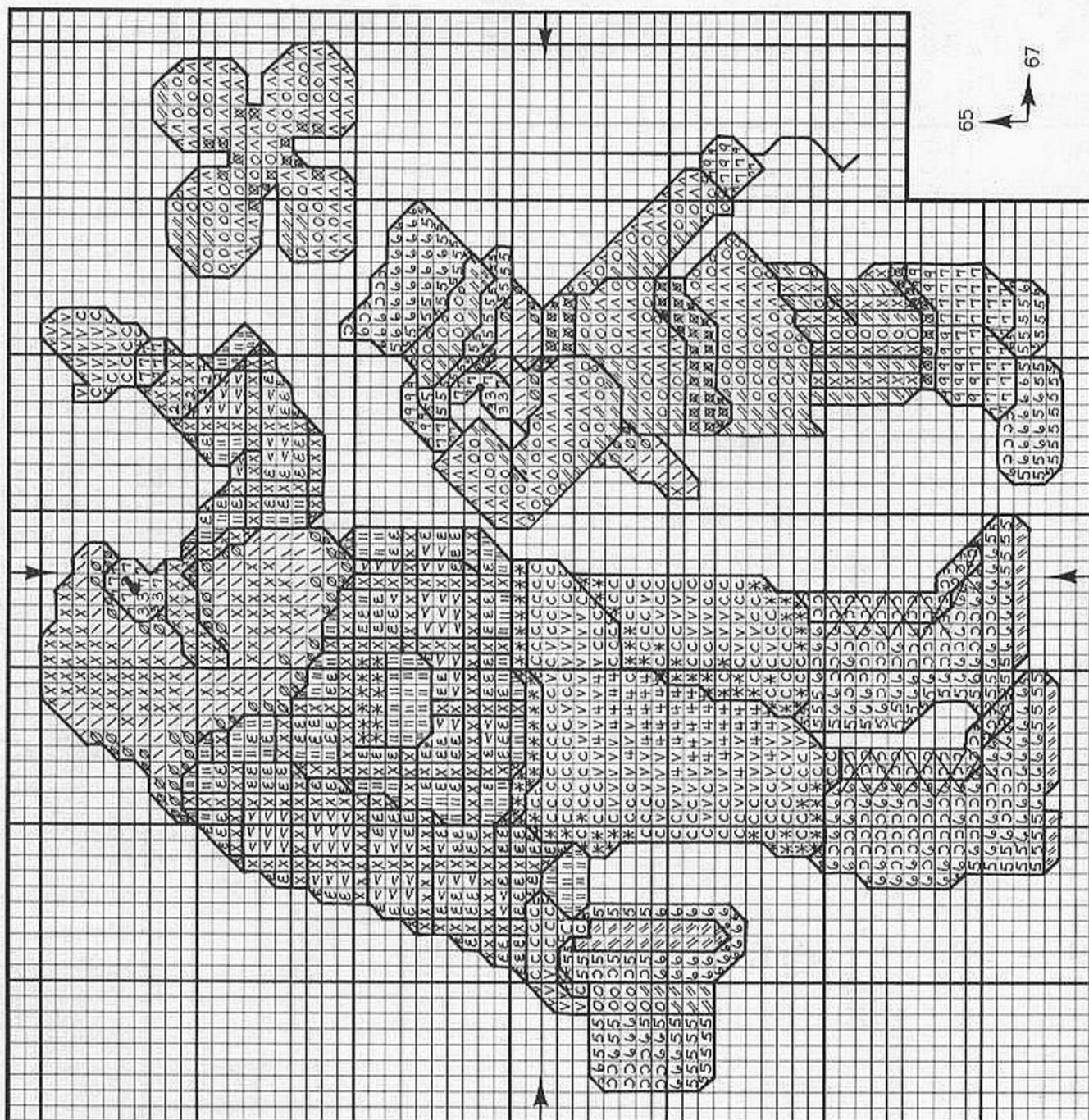
FRENCH KNOTS:

Eyes—798.

Buttons—3371.

DIMENSIONS

Fabric Count	Design Area	Cutting Dimensions
22	3 x 3	9 x 9
18	3 3/4 x 3 3/4	9 3/4 x 9 3/4
14	4 3/4 x 4 3/4	10 3/4 x 10 3/4
11	6 x 6	12 x 12



April

J.P. COATS COLORS

DMC COLORS	J.P. COATS COLORS
White	1001
•	
Φ	312
∥	318
Σ	322
Δ	334
○	335
×	353
Λ	414
×	415
×	433
×	434
×	435
×	436
×	437
×	472
×	738
×	739
×	746
×	754
×	762
×	775
×	776
×	798
×	899
×	3046
×	3047
×	3325
×	3326
×	3371
×	5478
×	5479
×	5511
×	5512
×	5513
×	5514
×	5515
×	5516
×	5517
×	5518
×	5519
×	5520
×	5521
×	5522
×	5523
×	5524
×	5525
×	5526
×	5527
×	5528
×	5529
×	5530
×	5531
×	5532
×	5533
×	5534
×	5535
×	5536
×	5537
×	5538
×	5539
×	5540
×	5541
×	5542
×	5543
×	5544
×	5545
×	5546
×	5547
×	5548
×	5549
×	5550
×	5551
×	5552
×	5553
×	5554
×	5555
×	5556
×	5557
×	5558
×	5559
×	5560
×	5561
×	5562
×	5563
×	5564
×	5565
×	5566
×	5567
×	5568
×	5569
×	5570
×	5571
×	5572
×	5573
×	5574
×	5575
×	5576
×	5577
×	5578
×	5579
×	5580
×	5581
×	5582
×	5583
×	5584
×	5585
×	5586
×	5587
×	5588
×	5589
×	5590
×	5591
×	5592
×	5593
×	5594
×	5595
×	5596
×	5597
×	5598
×	5599
×	5600
×	5601
×	5602
×	5603
×	5604
×	5605
×	5606
×	5607
×	5608
×	5609
×	5610
×	5611
×	5612
×	5613
×	5614
×	5615
×	5616
×	5617
×	5618
×	5619
×	5620
×	5621
×	5622
×	5623
×	5624
×	5625
×	5626
×	5627
×	5628
×	5629
×	5630
×	5631
×	5632
×	5633
×	5634
×	5635
×	5636
×	5637
×	5638
×	5639
×	5640
×	5641
×	5642
×	5643
×	5644
×	5645
×	5646
×	5647
×	5648
×	5649
×	5650
×	5651
×	5652
×	5653
×	5654
×	5655
×	5656
×	5657
×	5658
×	5659
×	5660
×	5661
×	5662
×	5663
×	5664
×	5665
×	5666
×	5667
×	5668
×	5669
×	5670
×	5671
×	5672
×	5673
×	5674
×	5675
×	5676
×	5677
×	5678
×	5679
×	5680
×	5681
×	5682
×	5683
×	5684
×	5685
×	5686
×	5687
×	5688
×	5689
×	5690
×	5691
×	5692
×	5693
×	5694
×	5695
×	5696
×	5697
×	5698
×	5699
×	5700

Lt. Navy Blue	312
Lt. Steel Grey	318
Vy. Lt. Navy Blue	322
Med. Baby Blue	334
Rose	335
Peach Flesh	353
Dk. Steel Grey	414
Pearl Grey	415
Med. Brown	433
Lt. Brown	434
Vy. Lt. Brown	435
Tan	436
Lt. Tan	437
Vy. Lt. Topaz	472
Vy. Lt. Tan	738
Ultra Vy. Lt. Tan	739
Off White	746
Lt. Peach Flesh	754
Vy. Lt. Pearl Grey	762
Lt. Baby Blue	775
Med. Pink	776
Dk. Delft	798
Med. Rose	899
Med. Yellow Beige	3046
Lt. Yellow Beige	3047
Baby Blue	3325
Lt. Rose	3326
Black Brown	3371

Special Instructions:

BACKSTITCH:

Everything 3371, except hair and beard—434.

Bunny's whiskers—long running stitches—3371.

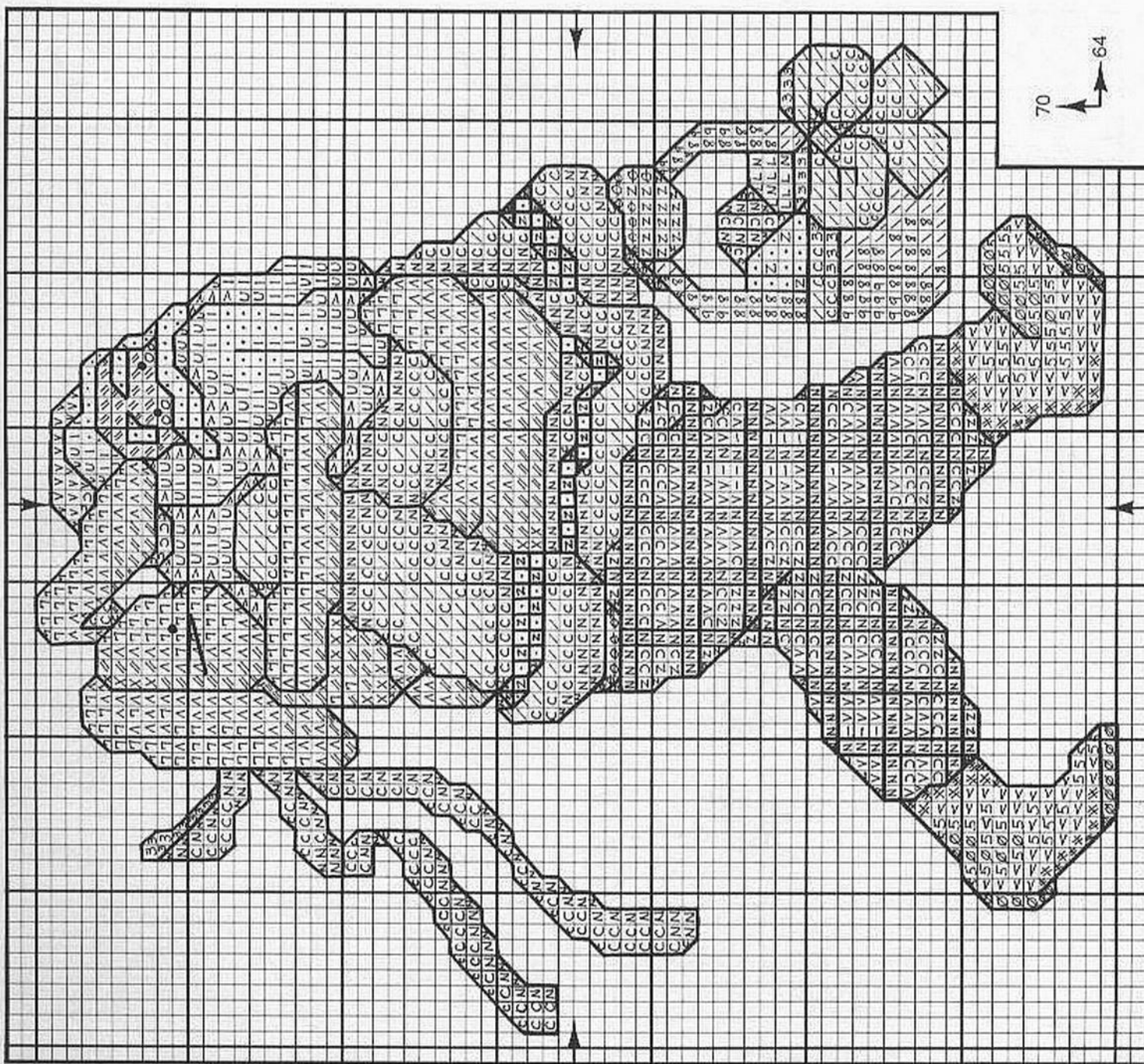
FRENCH KNOTS:

Santa's eyes—798.

Bunny's eye—3371.

DIMENSIONS

Fabric Count	Design Area	Cutting Dimensions
22	3 x 3 1/8	9 x 9 1/8
18	3 1/2 x 3 7/8	9 1/2 x 9 7/8
14	4 1/2 x 5	10 1/2 x 11
11	5 5/8 x 6 1/3	11 7/8 x 12 1/3

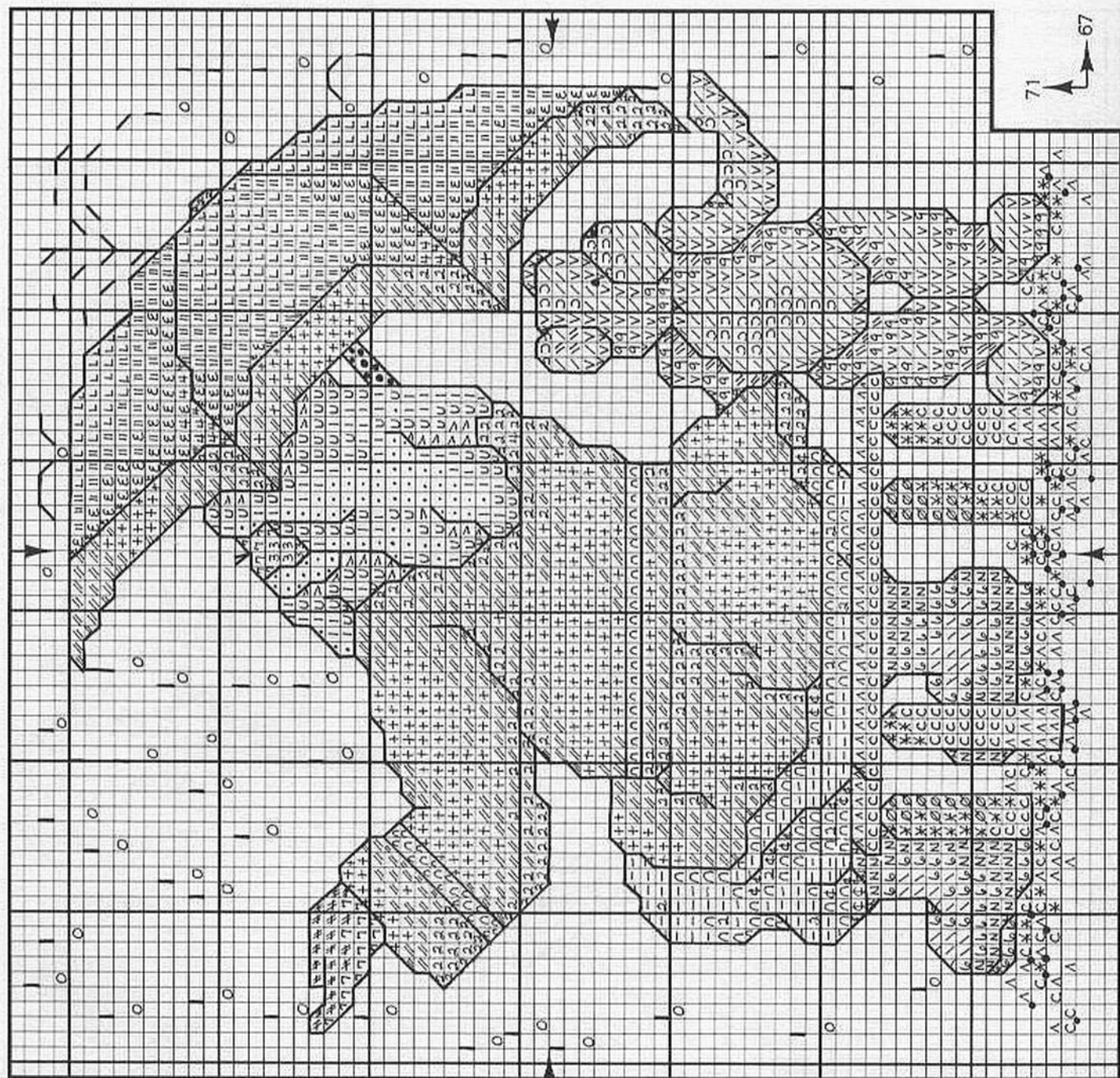


May

J.P. COATS COLORS

DMC COLORS	J.P. COATS COLORS
White	1001
318	8511 Lt. Steel Grey
333	— Dk. Blue Violet
340	7110 Med. Blue Violet
341	7005 Lt. Blue Violet
353	3006 Peach Flesh
414	8513 Dk. Steel Grey
415	8510 Pearl Grey
434	5000 Lt. Brown
500	6880 Vy. Dk. Blue Green
501	6878 Dk. Blue Green
502	6876 Blue Green
503	6879 Med. Blue Green
645	8500 Vy. Dk. Beaver Grey
646	8500 Dk. Beaver Grey
676	2305 Lt. Old Gold
677	— Vy. Lt. Old Gold
729	5363 Med. Old Gold
746	— Off White
754	2331 Lt. Peach Flesh
762	8510 Vy. Lt. Pearl Grey
775	7031 Lt. Baby Blue
838	5381 Vy. Dk. Beige Brown
839	5360 Dk. Beige Brown
840	5379 Med. Beige Brown
841	5376 Lt. Beige Brown
842	5933 Vy. Lt. Beige Brown
844	8501 Ultra Dk. Beaver Grey
899	3282 Med. Rose
948	2331 Vy. Lt. Peach Flesh
3046	2410 Med. Yellow Beige
3047	2300 Lt. Yellow Beige
3371	5478 Black Brown

• 2 // + 3 4 = 0 * < ^ b \ n - 4 - 7 1 0 // 9 v / 2 n x ^ u •



Special Instructions:

1. Backstitch beard and hair—434.
2. Backstitch all else—3371.
3. French knot for bear's eye—3371.
4. Alternating French knots for flowers—341, 333 and 899.

DIMENSIONS

Fabric Count	Design Area	Cutting Dimensions
22	3 1/4 x 3	9 1/4 x 9
18	4 x 3 3/4	10 x 9 3/4
14	5 x 4 3/4	11 x 10 3/4
11	6 1/2 x 6	12 1/2 x 12

June

J.P. COATS COLORS

DMC COLORS	White	1001	Med. Navy Blue
	311	7980	Lt. Navy Blue
	312	7979	Lt. Steel Grey
	318	8511	Vy. Lt. Navy Blue
	322	7978	Navy Blue
	336	7981	Peach Flesh
	353	3006	Dk. Steel Grey
	414	8513	Pearl Grey
	415	8510	Lt. Brown
	434	5000	Dk. Christmas Red
	498	3410	Pale Yellow
	744	2293	Lt. Pale Yellow
	745	2296	Off White
	746	—	Lt. Peach Flesh
	754	2331	Vy. Lt. Pearl Grey
	762	8510	Dk. Delft
	798	7022	Med. Garnet
	815	3000	Garnet
	816	3410	Dk. Navy Blue
	823	7982	Dk. Beige Brown
	839	5360	Med. Beige Brown
	840	5379	Lt. Beige Brown
	841	5376	Vy. Dk. Garnet
	902	3083	Med. Yellow Beige
	3046	2410	Lt. Yellow Beige
	3047	2300	Lt. Rose
	3326	3126	Black Brown
	3371	5478	

• / \ = 0 v 3 ∅ = U 4 - C 7 ∩ A > / 9 ∅ < * < = -

Special Instructions:

BACKSTITCH:

Hair and beard—434.
Tassels—long running stitches—744.
All else—3371.

FRENCH KNOTS:

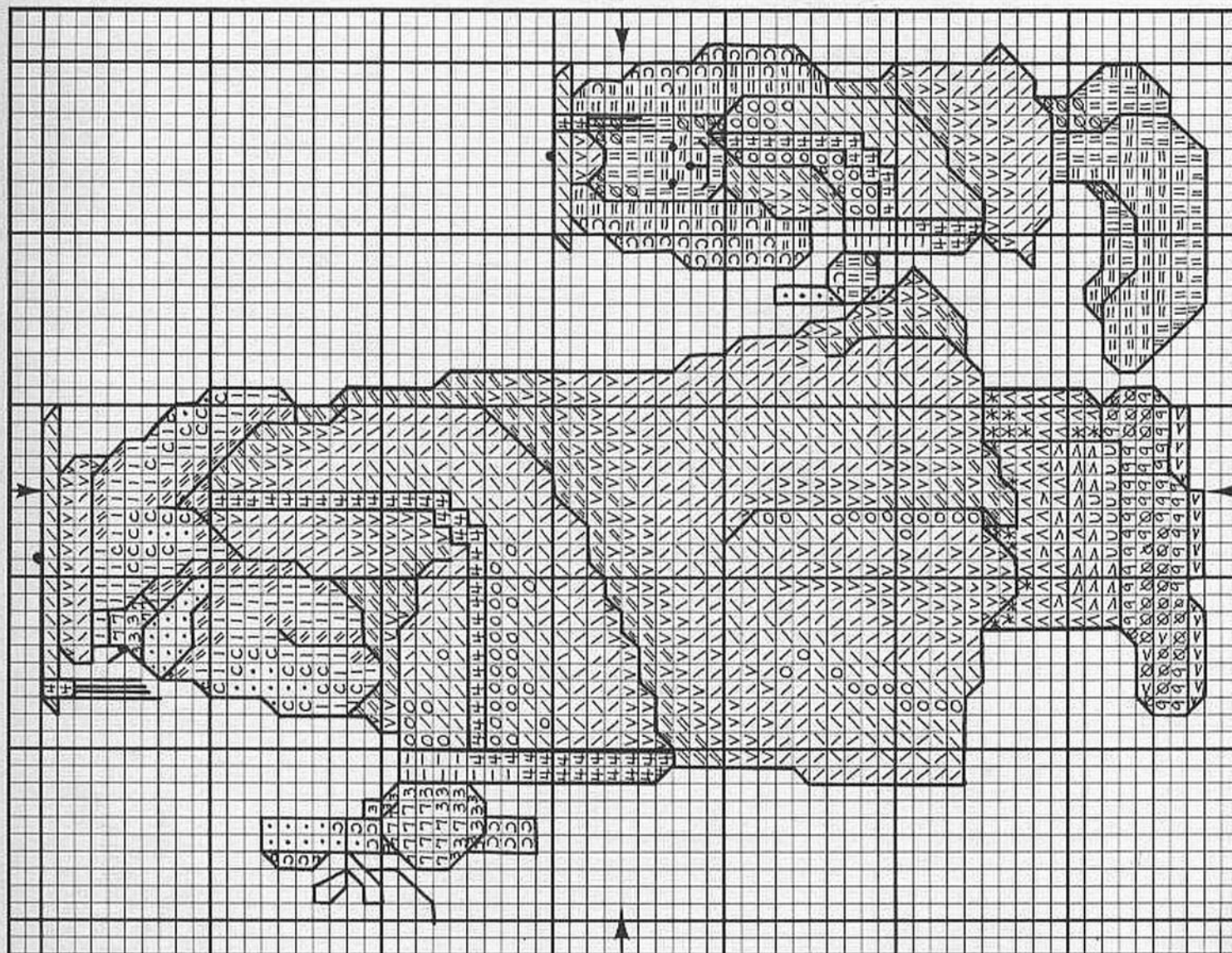
Cap—823.
Eyes on bunny—3371.
Santa's eye—798.
Nose on bunny—3326.

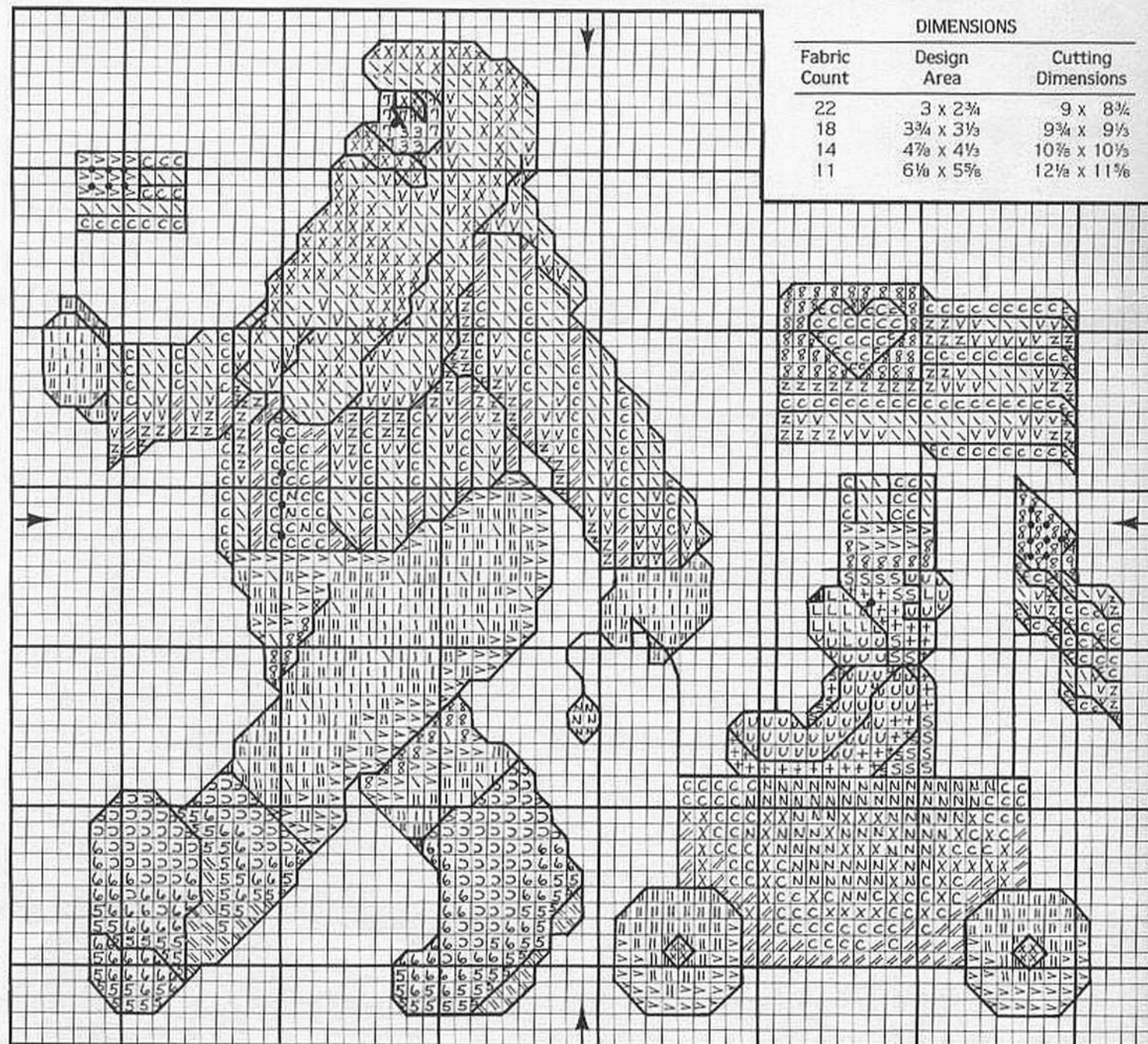
68

51

DIMENSIONS

Fabric Count	Design Area	Cutting Dimensions
22	2 1/8 x 3 1/8	8 1/8 x 9 1/8
18	2 7/8 x 3 3/4	8 7/8 x 9 3/4
14	3 1/2 x 4 7/8	9 1/2 x 10 7/8
11	4 3/8 x 5 1/8	10 5/8 x 12 1/8





DIMENSIONS

Fabric Count	Design Area	Cutting Dimensions
22	3 x 2 3/4	9 x 8 3/4
18	3 3/4 x 3 1/2	9 3/4 x 9 1/2
14	4 7/8 x 4 1/2	10 7/8 x 10 1/2
11	6 1/8 x 5 5/8	12 1/8 x 11 1/8

July

DMC COLORS J.P. COATS COLORS

X	White	1001
I	311	7980 Med. Navy Blue
I	312	7979 Lt. Navy Blue
>	336	7981 Navy Blue
3	353	3006 Peach Flesh
S	434	5000 Lt. Brown
+	435	5371 Vy. Lt. Brown
C	436	5943 Tan
L	437	5942 Lt. Tan
	640	5393 Vy. Dk. Beige Grey
Z	642	— Dk. Beige Grey
V	644	8501 Med. Beige Grey
5	645	8500 Vy. Dk. Beaver Grey

DMC COLORS J.P. COATS COLORS

6	646	8500 Dk. Beaver Grey
5	647	8900 Med. Beaver Grey
7	754	2331 Lt. Peach Flesh
	798	7022 Dk. Delft
C	814	3044 Dk. Garnet
N	816	3410 Garnet
\	822	— Lt. Beige Grey
8	823	7982 Dk. Navy Blue
//	844	8501 Ultra Dk. Beaver Grey
//	902	3083 Vy. Dk. Garnet
9	939	7160 Vy. Dk. Navy Blue
•	3031	5472 Vy. Dk. Mocha Brown
•	3371	5478 Black Brown

Special Instructions:

BACKSTITCH:

Santa's eye—798.
Beard—3031.
Eyebrows—640.
All else—3371.

FRENCH KNOTS:

Santa's buttons and
Teddy's eye—3371.
Knots on flag—822.
Santa's eye—798.

August

DMC
COLORS

J.P. COATS
COLORS

0	White	1001	
2	311	7980	Med. Navy Blue
U	312	7979	Lt. Navy Blue
I	321	3500	Christmas Red
L	322	7978	Vy. Lt. Navy Blue
\	334	7977	Med. Baby Blue
3	353	3006	Peach Flesh
	434	5000	Lt. Brown
Λ	435	5371	Vy. Lt. Brown
6	436	5943	Tan
C	498	3410	Dk. Christmas Red
∞	502	6876	Blue Green
∩	503	6879	Med. Blue Green
∅	725	2298	Topaz
∥	726	2294	Lt. Topaz
<	727	2289	Vy. Lt. Topaz
-	746	—	Off White
7	754	2331	Lt. Peach Flesh
V	815	3000	Med. Garnet
//	902	3083	Vy. Dk. Garnet
/	948	2331	Vy. Lt. Peach Flesh
E	3046	2410	Med. Yellow Beige
>	3047	2300	Lt. Yellow Beige
	3371	5478	Black Brown
*	Balger® HL Silver		

Special Instructions:

BACKSTITCH:

Hair and beard—434.

GONE FISHIN'—311.

SANTA on hat—815.

Pole—2 strands—3371.

Line—1 strand—3371.

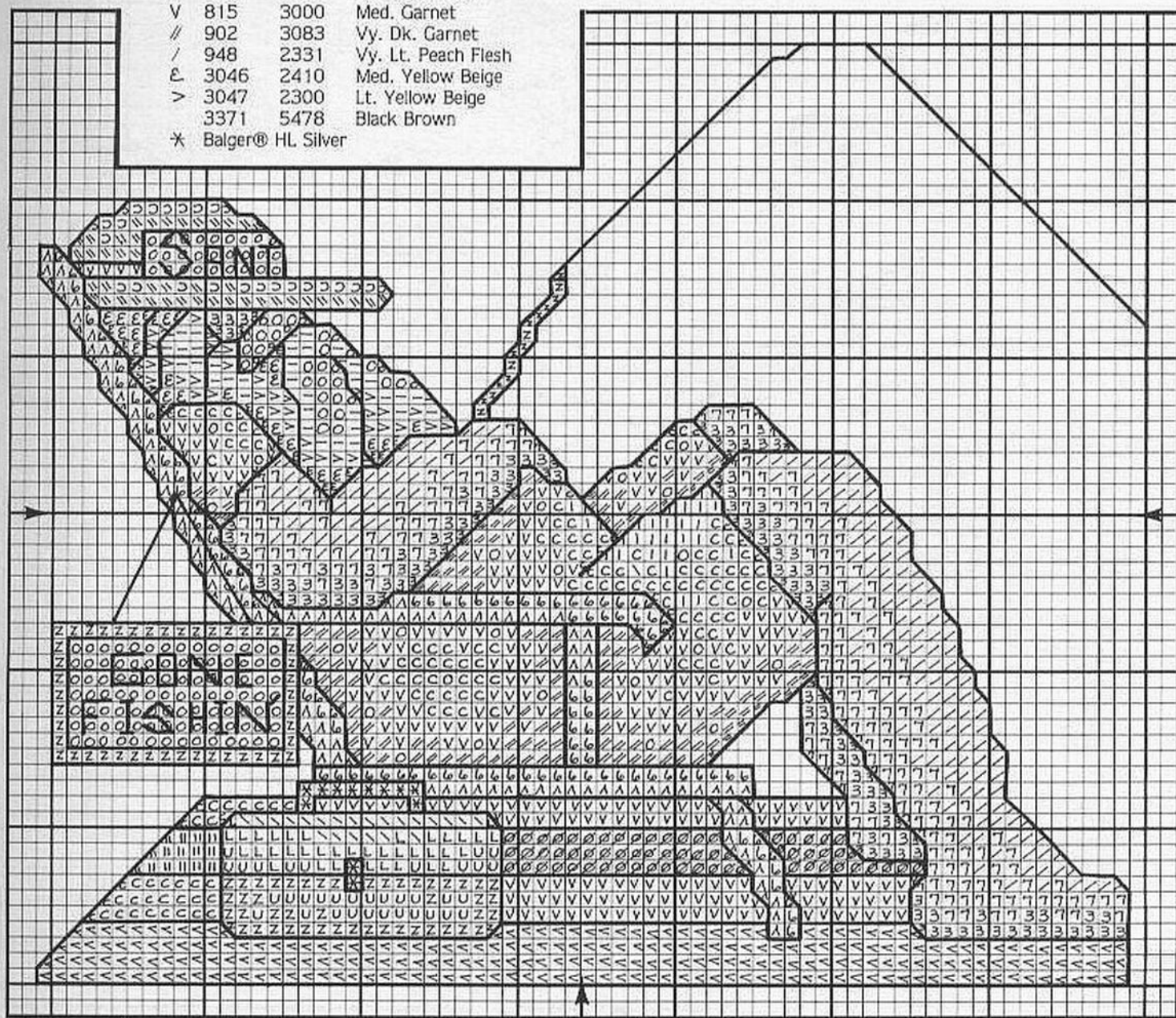
All else—3371.

DIMENSIONS

Fabric Count	Design Area	Cutting Dimensions
22	3 1/8 x 2 3/4	9 1/8 x 8 3/4
18	3 1/8 x 3 1/3	9 1/8 x 9 1/3
14	5 x 4 1/4	11 x 10 1/4
11	6 1/3 x 5 1/2	12 1/3 x 11 1/2

60

70



September

DMC	J.P. COATS
COLORS	COLORS
/ White	1001
3 353	3006 Peach Flesh
434	5000 Lt. Brown
z 498	3410 Dk. Christmas Red
x 500	6880 Vy. Dk. Blue Green
< 501	6878 Dk. Blue Green
v 502	6876 Blue Green
o 503	6879 Med. Blue Green
- 504	6875 Lt. Blue Green
4 646	8500 Dk. Beaver Grey
6 676	2305 Lt. Old Gold
\ 746	— Off White
7 754	2331 Lt. Peach Flesh
o 762	8510 Vy. Lt. Pearl Grey
q 797	7023 Royal Blue
i 798	7022 Dk. Delft
^ 815	3000 Med. Garnet
c 816	3410 Garnet
8 844	8501 Ultra Dk. Beaver Grey
// 902	3083 Vy. Dk. Garnet
L 3047	2300 Lt. Yellow Beige
3371	5478 Black Brown

Special Instructions:

BACKSTITCH:

Everything 3371, except hair and beard—434.

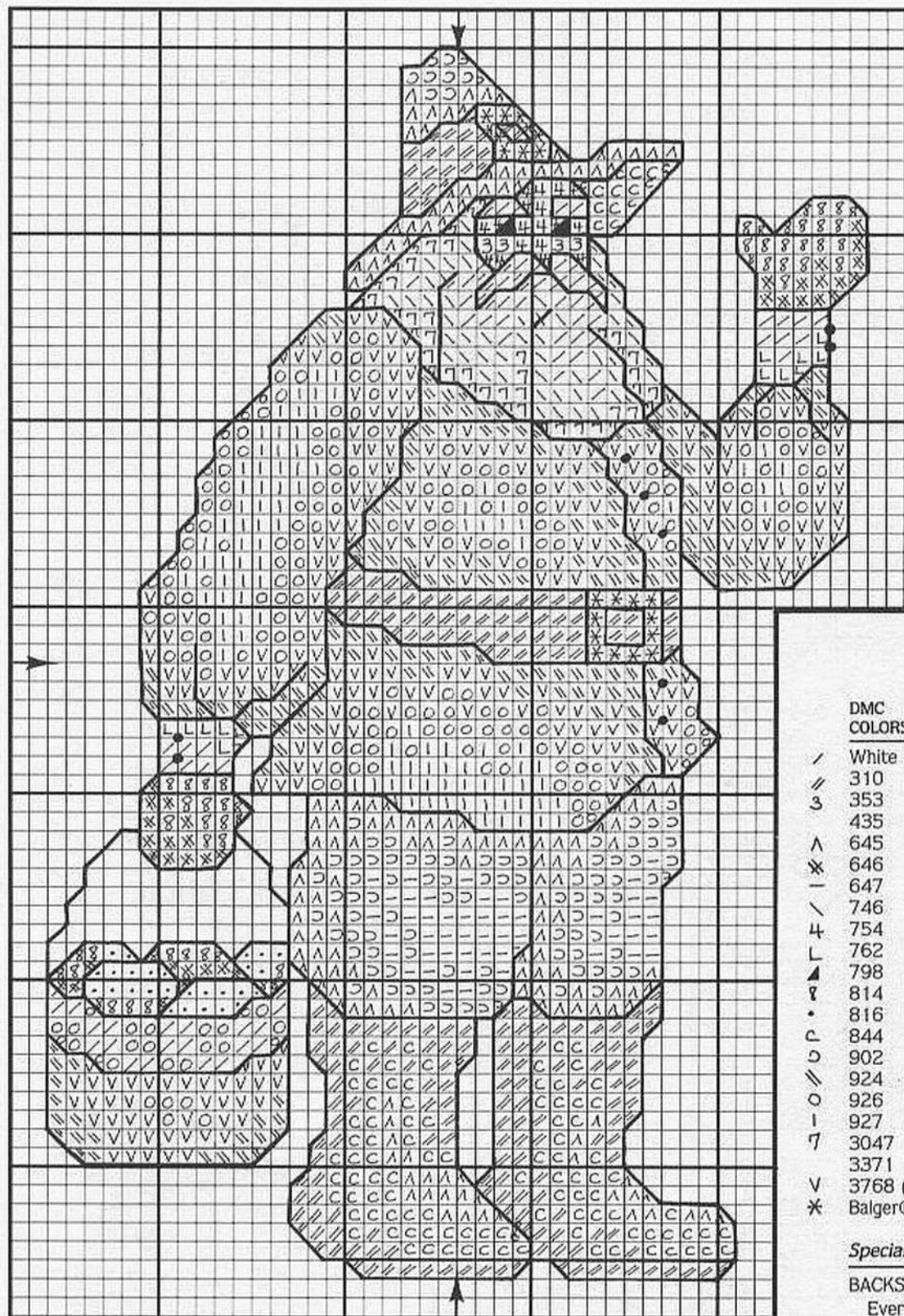
1. French knot for eye 798. Eyelash—back-stitch 798.

DIMENSIONS

Fabric Count	Design Area	Cutting Dimensions
22	1 7/8 x 3	7 7/8 x 9
18	2 1/4 x 3 3/8	8 1/4 x 9 7/8
14	2 7/8 x 4 3/4	9 7/8 x 10 3/4
11	3 3/4 x 6 1/8	9 3/4 x 12 1/8

67

41



November

DMC COLORS	J.P. COATS COLORS	
/	White	1001
//	310	8403 Black
3	353	3006 Peach Flesh
4	435	5371 Vy. Lt. Brown
^	645	8500 Vy. Dk. Beaver Grey
*	646	8500 Dk. Beaver Grey
-	647	8900 Med. Beaver Grey
\	746	— Off White
4	754	2331 Lt. Peach Flesh
L	762	8510 Vy. Lt. Pearl Grey
7	798	7022 Dk. Delft
8	814	3044 Dk. Garnet
•	816	3410 Garnet
C	844	8501 Ultra Dk. Beaver Grey
o	902	3083 Vy. Dk. Garnet
o	924	6008 Vy. Dk. Grey Green
o	926	6007 Dk. Grey Green
1	927	6006 Med. Grey Green
7	3047	2300 Lt. Yellow Beige
V	3371	5478 Black Brown
*	3768 (new color)	
*	Balger® HL Silver	

Special Instructions:

BACKSTITCH:

Everything 3371, except hair and beard—435.

FRENCH KNOTS:

Jacket and cuffs—3371.

DIMENSIONS

Fabric Count	Design Area	Cutting Dimensions
22	2 x 3	8 x 9
18	2½ x 3½	8½ x 9½
14	3½ x 4¾	9½ x 10¾
11	4 x 6	10 x 12



December

DMC J.P. COATS
COLORS

White	1001	Christmas Red
321	3500	Lt. Coral
353	3006	Med. Brown
433	5471	Lt. Brown
434	5000	Vy. Lt. Brown
435	5371	Tan
436	5943	Lt. Tan
437	5942	Dk. Christmas Red
498	3410	Vy. Dk. Blue Green
500	6880	Dk. Blue Green
501	6878	Blue Green
502	6876	Med. Blue Green
503	6879	Vy. Dk. Beaver Grey
645	8500	Dk. Beaver Grey
646	8500	Med. Beaver Grey
647	8900	Vy. Lt. Tan
738	5375	Off White
746	—	Lt. Peach Flesh
754	2331	Vy. Lt. Pearl Grey
762	8510	Dk. Delft
798	7022	Med. Garnet
815	3000	Med. Beige Brown
840	5379	Lt. Beige Brown
841	5376	Vy. Lt. Beige Brown
842	5933	Ultra Dk. Beaver Grey
844	8501	Vy. Dk. Garnet
902	3083	Vy. Lt. Peach Flesh
948	2331	Lt. Yellow Beige
3047	2300	Black Brown
3371	5478	

• o 3 x e s < 4 / // \ / \ V 6 > - 8 Z 7 * ▲ □ ⊕ + 2 // X - ^ P

Special Instructions:

1. Backstitch feathers on tree—500.
1. Backstitch beard and hair—435. All else—3371.
3. French knots for bear's eyes and nose—3371.

DIMENSIONS

Fabric Count	Design Area	Cutting Dimensions
22	3 1/8 x 2 3/4	9 1/8 x 8 3/4
18	3 7/8 x 3 1/2	9 7/8 x 9 1/2
14	5 x 4 1/4	11 x 10 1/4
11	6 1/2 x 5 3/8	12 1/2 x 11 3/8

70

60