

Alma Lynne[®]

DESIGNS

The NEEDLEWORKS
CLINTONVILLE, WI

0889275
20087
\$550

HARES, BEARS AND DAIRY-HEIRS



• Counted Cross Stitch •

Table of Contents

Humphrey Calhoun Sweetfella	2
Jeremy Argyle Bunnington	4
Nehemiah Noteworthy	6
Nicholas Simon Sugarfoot	8
Sailor Bear	12
Sailor's Girl	13
Bossie	14
Matilda Moo-Moo	15
Hildegard Holstein	16
Beauregard T. Bunnythumper	17

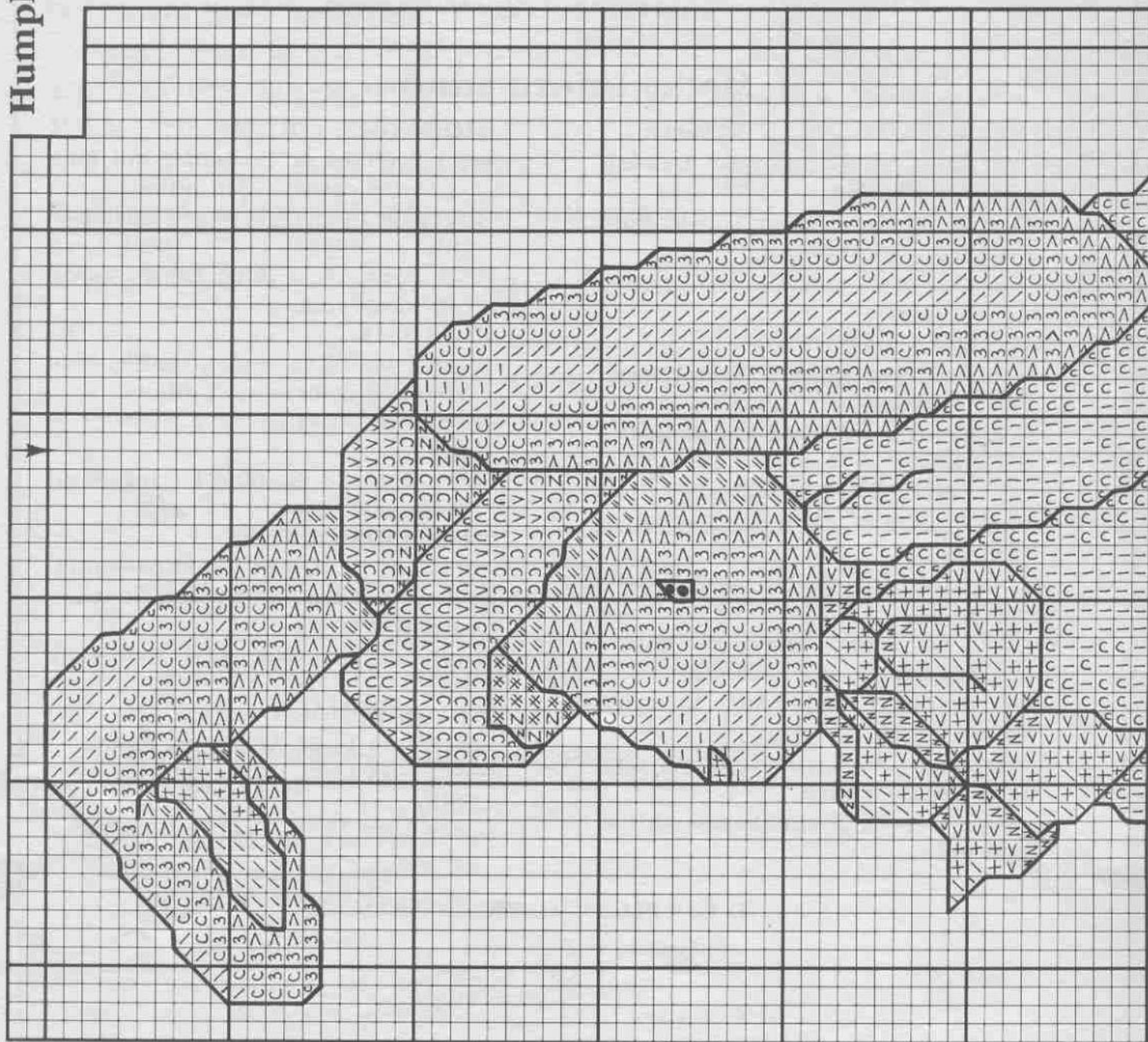
Model Information

- HUMPHREY CALHOUN SWEETFELLA:**
 - over 2 on 14 ct. Ice Blue Damask Aida—doll pillow.
 - over 2 on 14 ct. Honeysuckle Pink (Victorian color)—quilt.
 - over 2 on 28 ct. Rose/Cream Chalet—custom framed.
- NEHEMIAH NOTEWORTHY:**
 - over 2 on 28 ct. Antique White Alma—custom framed.
 - over 2 on 14 ct. White Damask Aida—doll pillow.
- JEREMY ARGYLE BUNNINGTON:**
 - over 2 on 28 ct. Fawn Alma—custom framed.
 - over 2 on 14 ct. Blue Damask Aida—doll pillow.
 - over 2 on 14 ct. Cream Aida—quilt.
- NICHOLAS SIMON SUGARFOOT:**
 - over 2 on 14 ct. Jonquil Aida (Victorian color)—quilt.
 - over 2 on 28 ct. Green/Cream Chalet—custom framed.
 - over 2 on 14 ct. White Damask Aida—doll pillow.
- SAILOR'S GIRL:**
 - over 2 on 14 ct. Forget-Me-Not Blue (Victorian color)—doll pillow.
 - over 2 on 14 ct. Light Blue Gardasee—quilt.
 - over 2 on 25 ct. Blue Lugana—oval ready-made frame.
- SAILOR BEAR:**
 - over 2 on 14 ct. Forget-Me-Not Blue (Victorian color)—doll pillow.
 - over 2 on 14 ct. Lt. Blue Gardasee—quilt.
 - over 2 on 25 ct. Blue Lugana—oval ready-made frame.
- HILDEGARD HOLSTEIN:**
 - over 2 on 14 ct. Rose Gardasee—quilt.
 - over 2 on 14 ct. Banana Soft Touch—custom framed.
 - over 2 on 14 ct. Not So Lil' Tote—tote bag.
- MATILDA MOO-MOO:**
 - over 2 on 14 ct. Aida—pot holder.
 - over 1 on 14 ct. Aida—towel.
- BOSSIE:**
 - over 2 on 19 ct. Granite Highland—pillow.

LEGEND FOR FLOSS COLOR CONVERSION

No Symbol	=	Exact Match
•	=	Close Match
+	=	Substitute Match
—	=	No Match

Humphrey Calhoun Sweetfella



DMC
COLORS

J.P. COATS
COLORS

1 * 4 U Z 5 A // \ 3 2 \ | C + / X N V < ●

White	1001	Lt. Navy Blue
312	7979	Vy. Dk. Pistachio Green
319	6246	Med. Pistachio Green
320	6017	Vy. Lt. Navy Blue
322	7978	Vy. Deep Rose
326	3019*	Med. Baby Blue
334	7977*	Dk. Pistachio Green
367	6018	Med. Brown
433	5374*	Lt. Brown
434	5365+	Vy. Lt. Brown
435	5365	Tan
436	5943	Lt. Tan
437	5373	Vy. Lt. Tan
738	5372*	Lt. Baby Blue
775	—	Med. Pink
776	3125*	Dk. Coffee Brown
801	5475	Baby Pink
818	3067+	Vy. Dk. Forest Green
890	6021	Med. Rose
899	3152+	Baby Blue
3325	7976	Lt. Rose
3326	3152*	Black Brown
3371	5382*	

120



Special Instructions:

BACKSTITCH:

Bunny—801.

Knickers, hat, shirt, and basket—312.

Ribbon on basket—899.

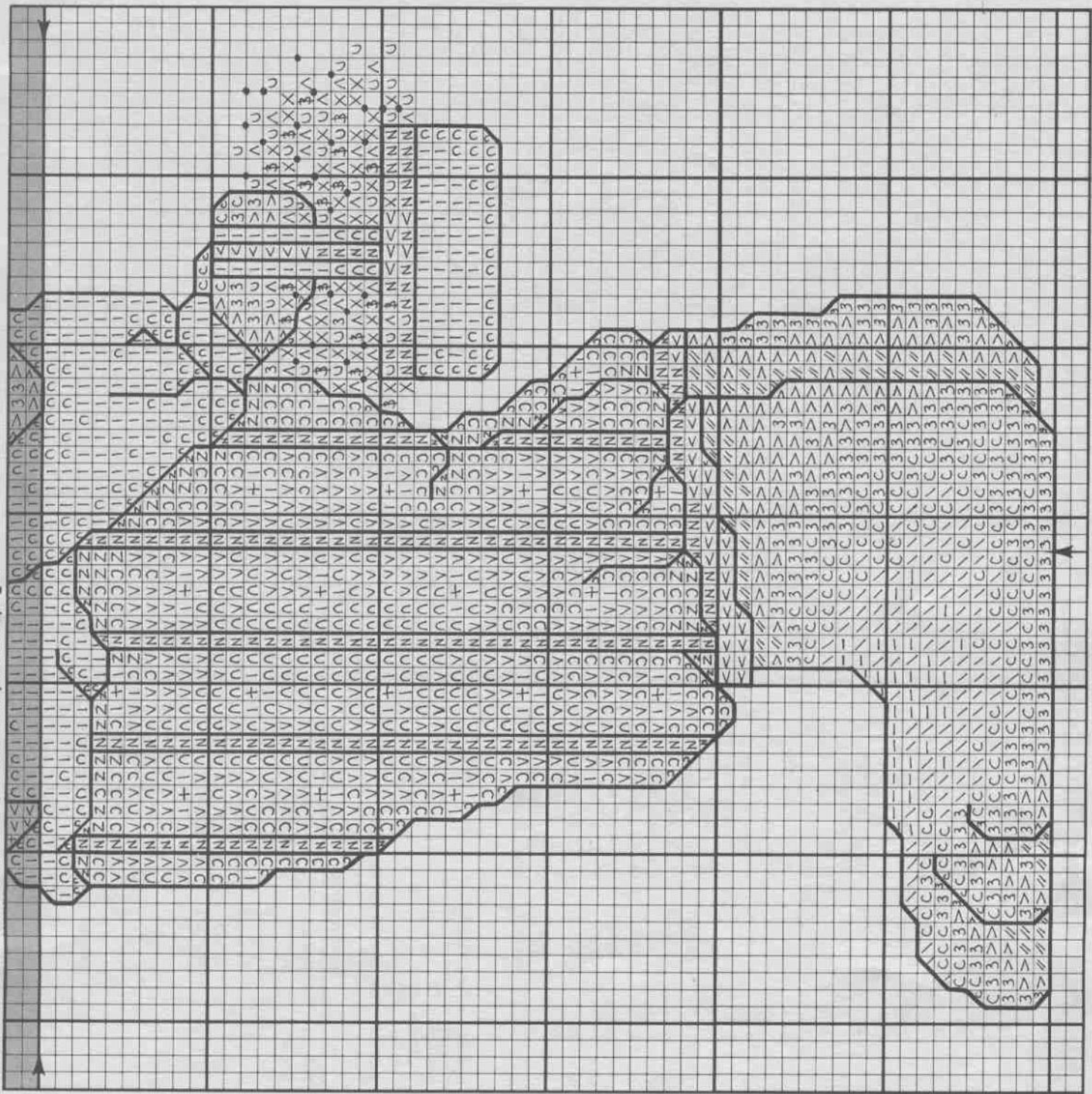
FRENCH KNOTS:

Flowers—776, 818, & white (alternating colors).

DIMENSIONS

Fabric Count	Design Area	Cutting Dimensions
22	5½ x 2¾	11½ x 8¾
18	6¾ x 3¾	12¾ x 9¾
14	8½ x 4¾	14½ x 10¾
11	10¾ x 5½	16¾ x 11½

Shaded area indicates last two rows stitched on previous page.



Jeremy Argyle Bunnington

DMC J.P. COATS

COLORS COLORS

White	1001	
Metallic Gold		
221	3243	Dk. Shell Pink
223	3240	Med. Shell Pink
224	—	Lt. Shell Pink
225	3006+	Vy. Lt. Shell Pink
311	7980	Med. Navy Blue
312	7979	Lt. Navy Blue
317	8512	Pewter Grey
322	7978	Vy. Lt. Navy Blue
336	7981	Navy Blue
640	5393	Vy. Dk. Beige Grey
642	—	Dk. Beige Grey
644	—	Med. Beige Grey
762	8510	Vy. Lt. Pearl Grey
822	5387+	Lt. Beige Grey
823	7982	Dk. Navy Blue
838	5360	Vy. Dk. Beige Brown
839	5360*	Dk. Beige Brown
840	5379	Med. Beige Brown
841	5376	Lt. Beige Brown
842	—	Vy. Lt. Beige Brown
902	3044+	Vy. Dk. Garnet
3371	5382*	Black Brown

• W/V/4 C/C/ 1 3 * < 7 0 8 X ^ S N - C •

Special Instructions:

BACKSTITCH:

Gloves—317.

Nose—221.

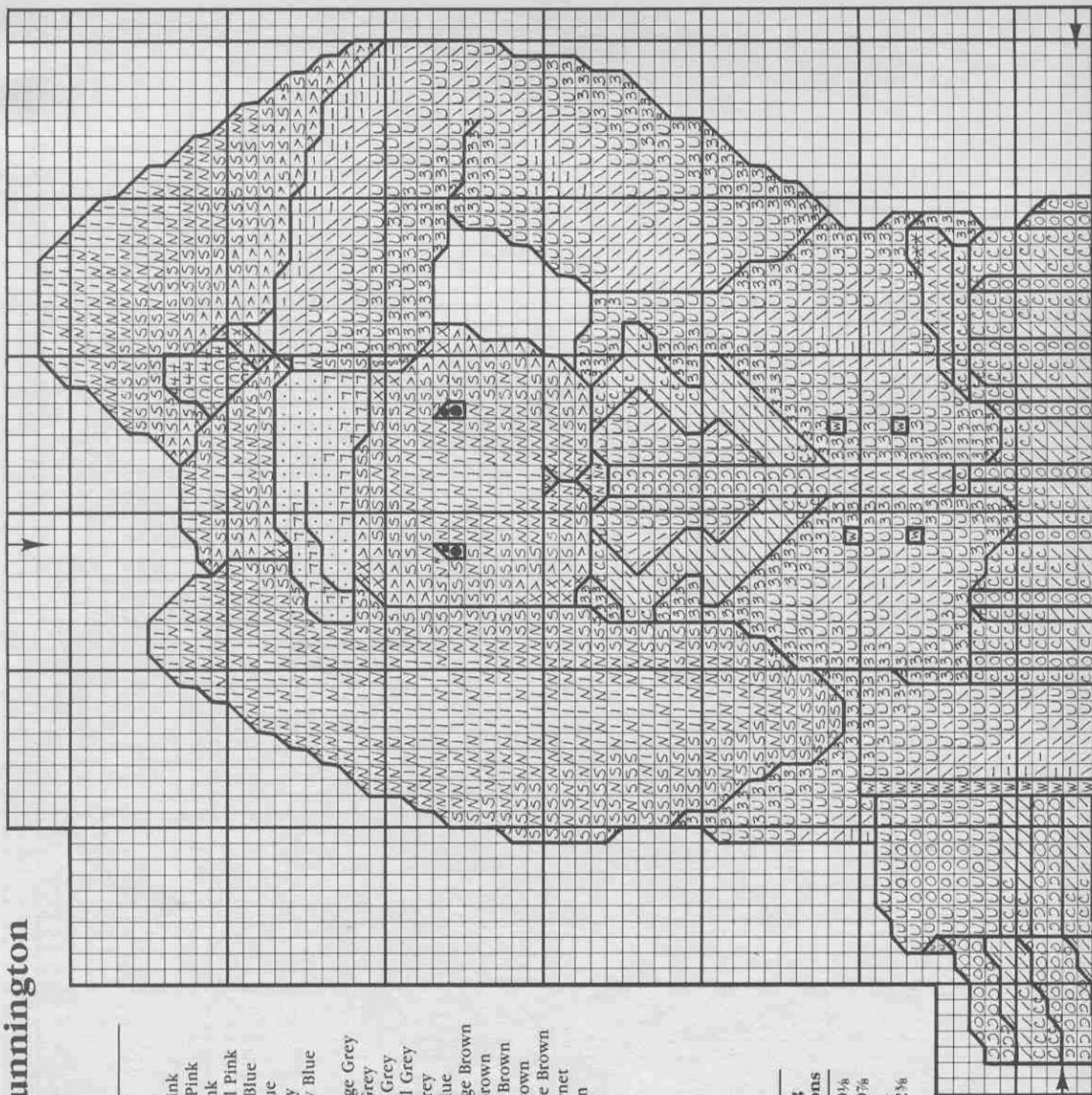
Bunny, flag, and all else—3371.

DIMENSIONS

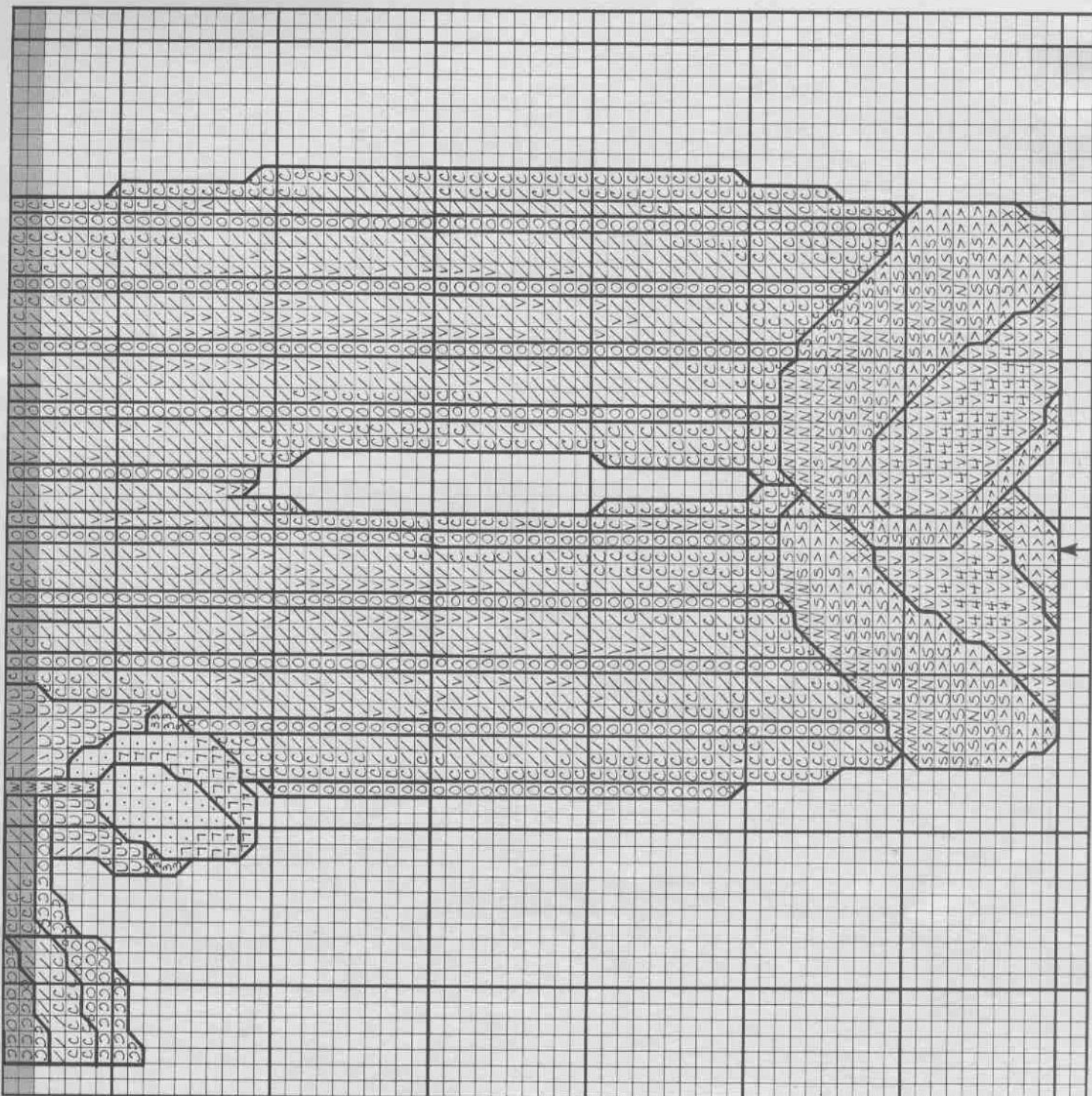
Fabric Count	Design Area	Cutting Dimensions
22	57 $\frac{1}{2}$ x 3 $\frac{1}{2}$	11 $\frac{7}{8}$ x 9 $\frac{1}{8}$
18	7 $\frac{1}{4}$ x 3 $\frac{3}{8}$	13 $\frac{1}{4}$ x 9 $\frac{7}{8}$
14	9 $\frac{1}{4}$ x 5	15 $\frac{1}{4}$ x 11
11	11 $\frac{3}{4}$ x 6 $\frac{3}{8}$	17 $\frac{1}{4}$ x 12 $\frac{1}{2}$

132

65



Shaded area indicates last two rows stitched on previous page.



Nehemiah Noteworthy

DMC COLORS	J.P. COATS COLORS	
Ecru	5387*	
317	8512	Pewter Grey
318	8511	Lt. Steel Grey
334	7977*	Med. Baby Blue
351	3011*	Coral
352	3011+	Lt. Coral
353	3008*	Peach Flesh
413	—	Dk. Pewter Grey
414	—	Dk. Steel Grey
415	8397+	Pearl Grey
435	5365	Vy. Lt. Brown
436	5943	Tan
437	5373	Lt. Tan
500	6880	Vy. Dk. Blue Green
501	6878	Dk. Blue Green
502	6876	Blue Green
503	6879	Med. Blue Green
504	6875	Lt. Blue Green
640	5393	Vy. Dk. Beige Grey
644	—	Med. Beige Grey
645	8500	Vy. Dk. Beaver Grey
647	8900	Med. Beaver Grey
648	8397*	Lt. Beaver Grey
738	5372*	Vy. Lt. Tan
754	3006	Lt. Peach Flesh
762	8510	Vy. Lt. Pearl Grey
822	5387+	Lt. Beige Grey
844	—	Ultra Dk. Beaver Grey
948	2331	Vy. Lt. Peach Flesh
3371	5382*	Black Brown

/ \ Ø V Z + 3 < = C 4 > 7 X S O A U * T & Ø 6 L • E W I - || \ //

Special Instructions:

BACKSTITCH:

Glasses and shoes—3371.

Nose tip—353.

Polka dots on vest—502.

Eyes—334

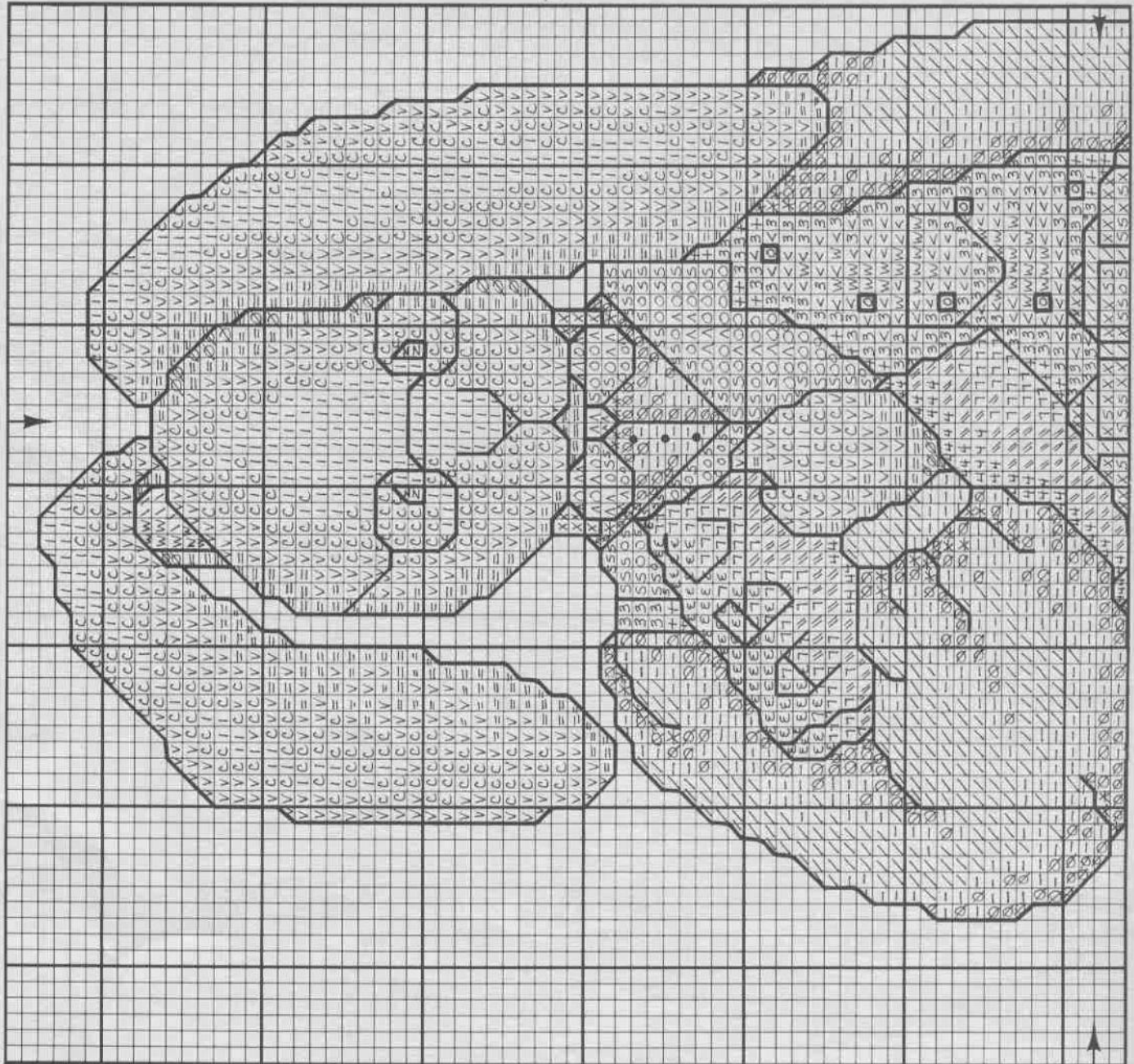
Ears, head, face, and hands—413.

Pants and bow tie and lapel on vest—500.

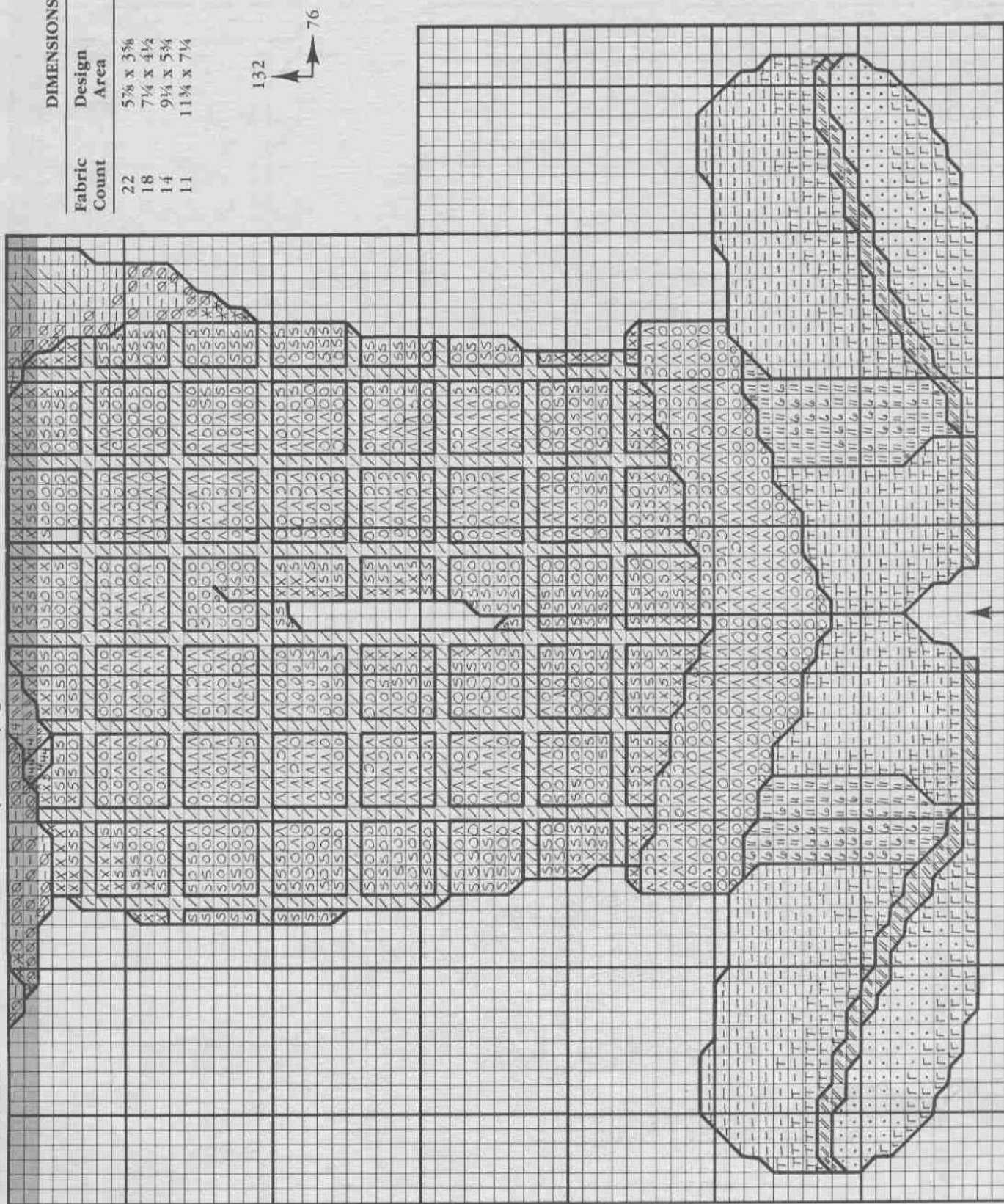
Vest—352.

Shirt—640.

"A B C" on book—500.



Shaded area indicates last two rows stitched on previous page.



132
76

DIMENSIONS

Fabric Count	Design Area	Cutting Dimensions
22	5 7/8 x 3 5/8	11 7/8 x 9 5/8
18	7 1/4 x 4 1/2	13 1/4 x 10 1/2
14	9 3/4 x 5 3/4	15 1/4 x 11 3/4
11	11 3/4 x 7 1/4	17 3/4 x 13 1/4

Nicholas Simon Sugarfoot

DMC COLORS	J.P. COATS COLORS	
White	1001	
221	5387*	Dk. Shell Pink
223	3240	Med. Shell Pink
224	—	Lt. Shell Pink
225	3006 +	Vy. Lt. Shell Pink
311	7980	Med. Navy Blue
312	7979	Lt. Navy Blue
318	8511	Lt. Steel Grey
319	6246	Vy. Dk. Pistachio Green
320	6017	Med. Pistachio Green
334	7977*	Med. Baby Blue
367	6018	Dk. Pistachio Green
368	6016	Lt. Pistachio Green
413	—	Dk. Pewter Grey
414	—	Dk. Steel Grey
415	8397 +	Pearl Grey
433	5374*	Med. Brown
500	6880	Vy. Dk. Blue Green
501	6878	Dk. Blue Green
502	6876	Blue Green
503	6879	Med. Blue Green
504	6875	Lt. Blue Green
762	8510	Vy. Lt. Pearl Grey
890	6021	Vy. Dk. Forest Green
938	5477	Ultra Dk. Coffee Brown
3325	7976	Baby Blue

^ ^ S V / • 3 = 7 // 6 - 4 < // N X C I • O E

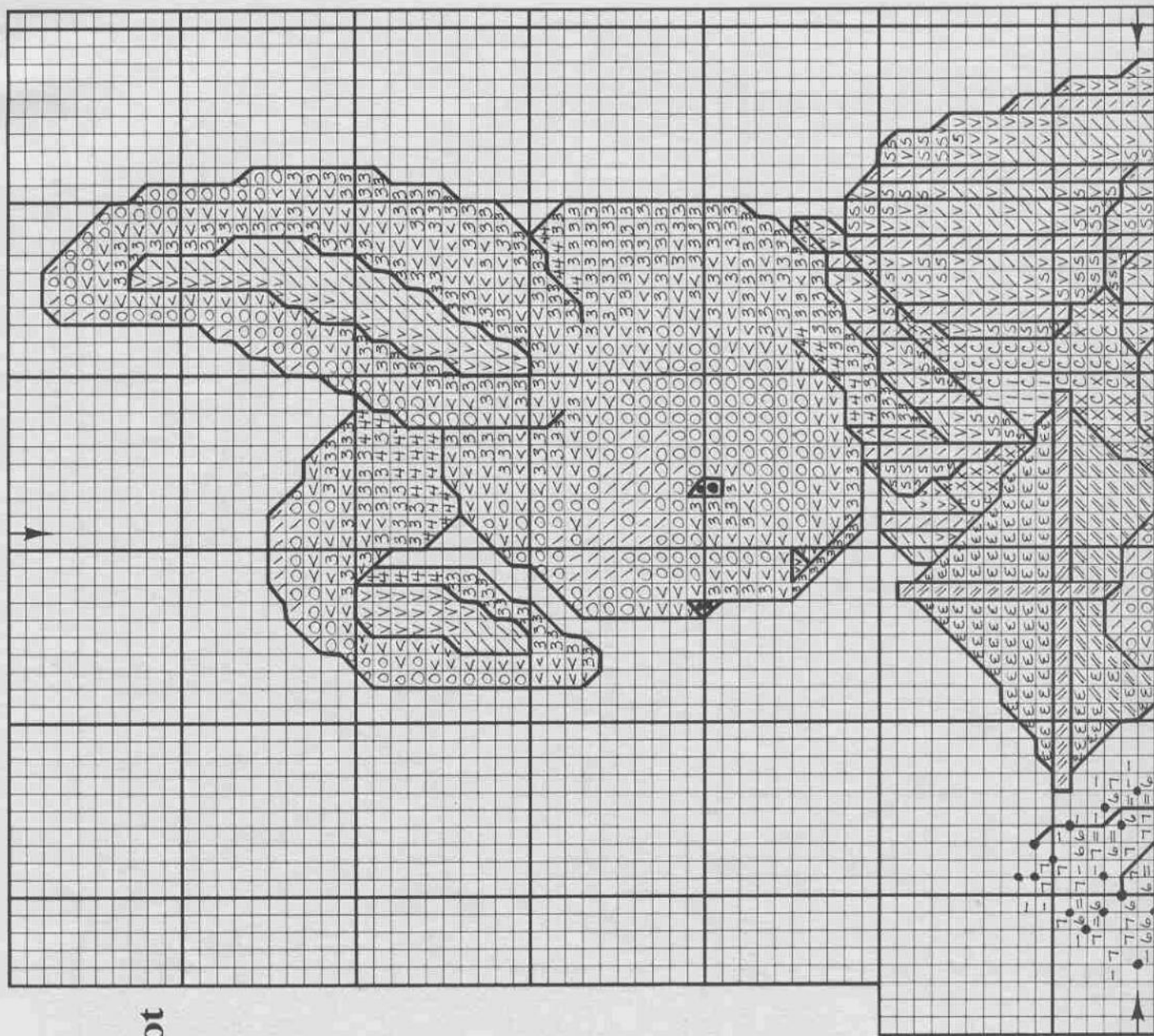
Special Instructions:

BACKSTITCH:

- Overalls—500.
- Kite braces—938.
- Nose—223.
- Eyes—311.
- Shirt and stripes within shirt—221.
- Kite—312.
- Bunny—413.
- Kite string—938.
- Flower stems—890.

FRENCH KNOTS:

- 221, 223, 224, 225, 334 & 3325 (altering).



Shaded area indicates last two rows stitched on previous page.

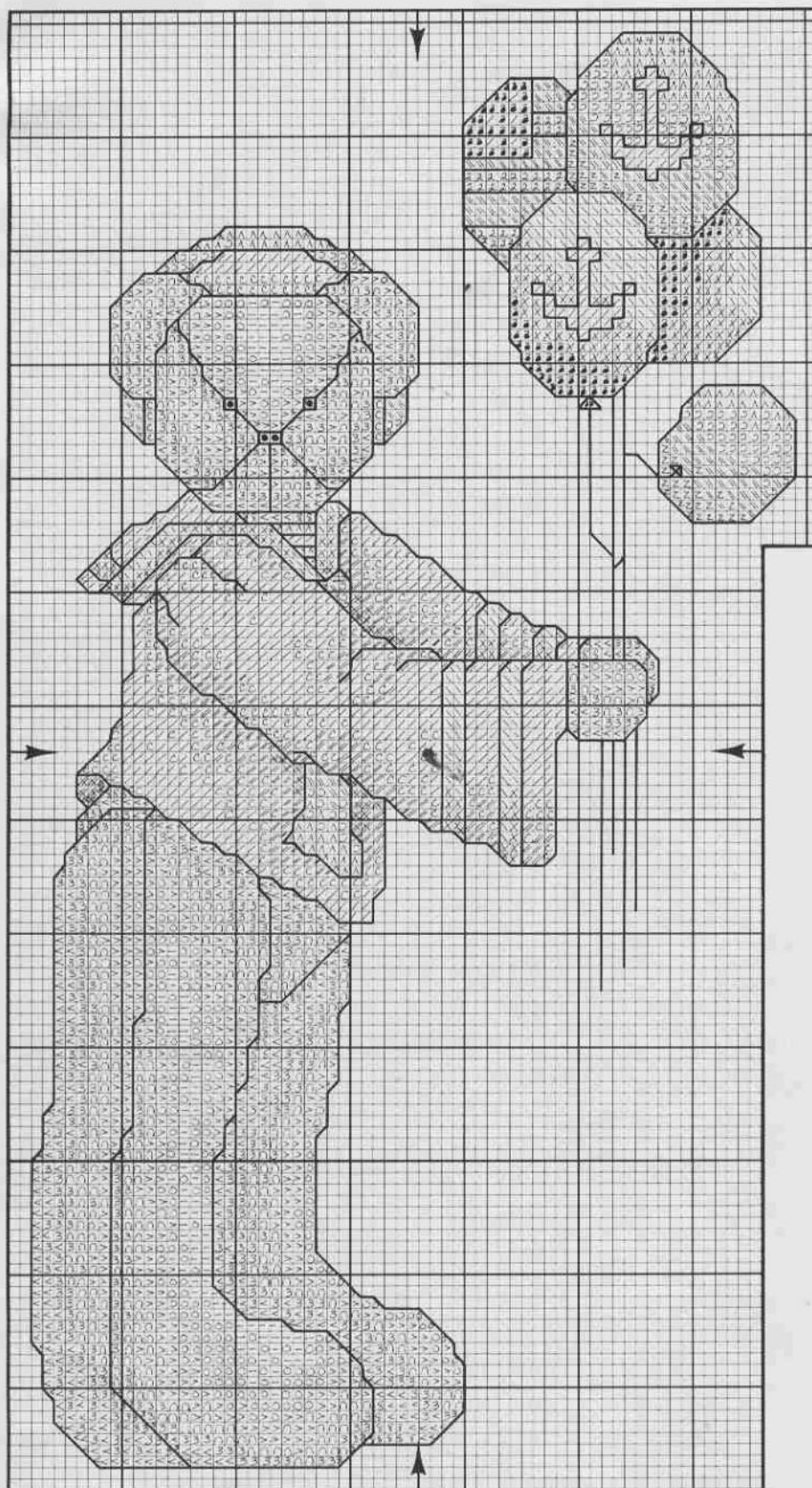
DIMENSIONS

Fabric Count	Design Area	Cutting Dimensions
22	5 7/8 x 2 3/4	11 7/8 x 8 3/4
18	7 1/4 x 3 3/8	13 3/4 x 9 3/8
14	9 1/4 x 4 1/4	15 1/4 x 10 1/4
11	11 3/4 x 5 1/2	17 3/4 x 11 1/2









Sailor Bear

	DMC COLORS	J.P. COATS COLORS
/	White	1001
x	311	7980 Med. Navy Blue
\	312	7979 Lt. Navy Blue
x	318	8511 Lt. Steel Grey
•	336	7981 Navy Blue
	413	— Dk. Pewter Grey
//	415	8397+ Pearl Grey
<	433	5374* Med. Brown
3	434	5365+ Lt. Brown
C	435	5365 Vy. Lt. Brown
V	436	5943 Tan
0	437	5373 Lt. Tan
4	498	3072 Dk. Christmas Red
—	738	5372* Vy. Lt. Tan
C	762	8510 Vy. Lt. Pearl Grey
8	801	5475 Dk. Coffee Brown
//	814	3044 Dk. Garnet
o	815	3073 Med. Garnet
^	816	3000* Garnet
2	822	5387+ Lt. Beige Grey
z	902	3044+ Vy. Dk. Garnet
•	3371	5382* Black Brown

Special Instructions:

BACKSTITCH:

Bear, balloon strings and balloons—3371.

Hat and shirt—413.

Stripes within shirt—311 (blue); 814 (red).

Red tie—814.

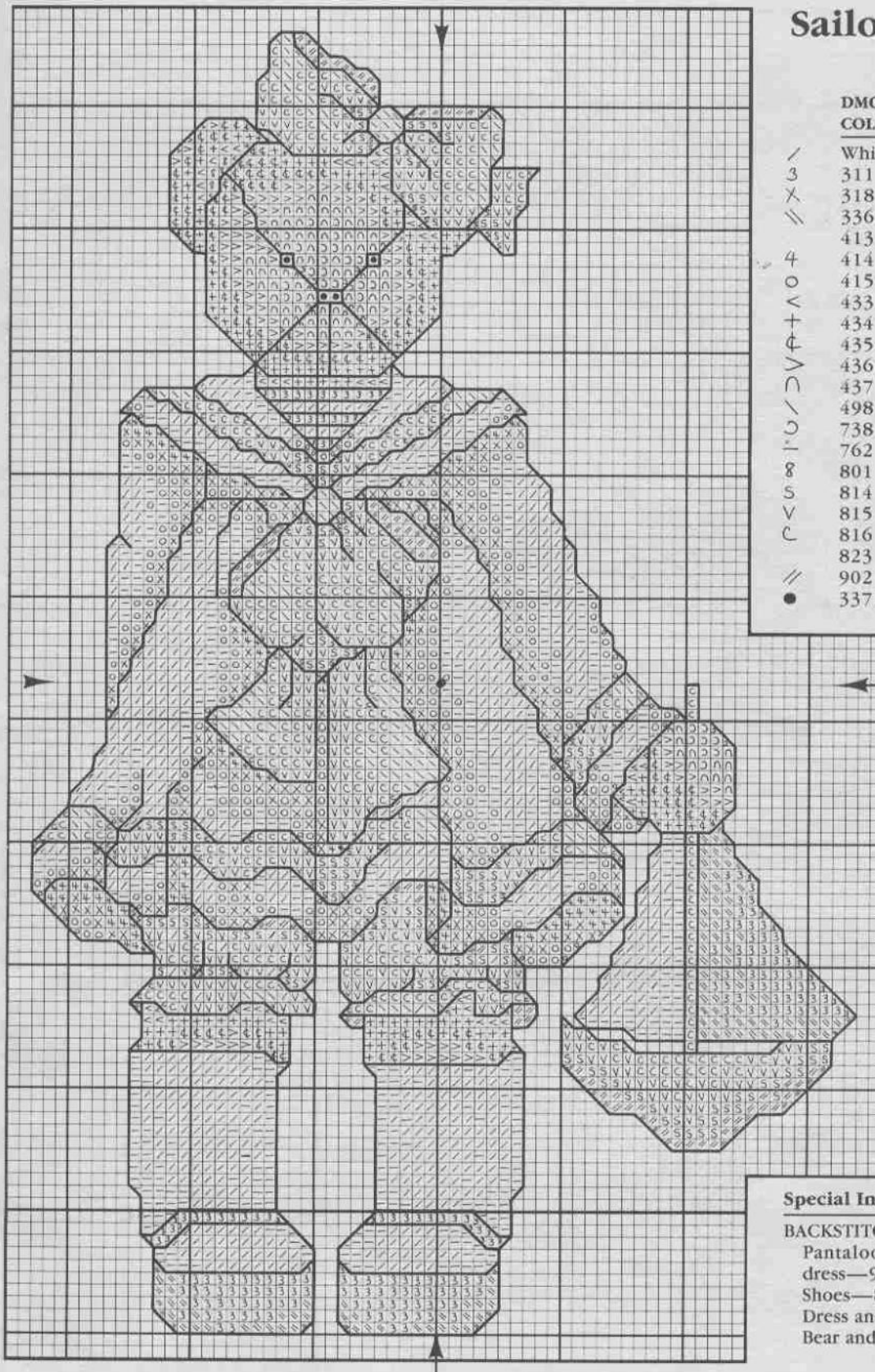
DIMENSIONS

Fabric Count	Design Area	Cutting Dimensions
22	5 $\frac{7}{8}$ x 3 $\frac{1}{8}$	11 $\frac{7}{8}$ x 9 $\frac{7}{8}$
18	7 $\frac{1}{4}$ x 3 $\frac{7}{8}$	13 $\frac{1}{4}$ x 9 $\frac{7}{8}$
14	9 $\frac{1}{4}$ x 5	15 $\frac{1}{4}$ x 11
11	11 $\frac{3}{4}$ x 6 $\frac{3}{8}$	17 $\frac{3}{4}$ x 12 $\frac{3}{4}$

126

67

Sailor's Girl



	DMC COLORS	J.P. COATS COLORS
/	White	1001
3	311	7980 Med. Navy Blue
X	318	8511 Lt. Steel Grey
≡	336	7981 Navy Blue
	413	— Dk. Pewter Grey
4	414	— Dk. Steel Grey
o	415	8397+ Pearl Grey
<	433	5374* Med. Brown
+	434	5365+ Lt. Brown
+	435	5365 Vy. Lt. Brown
+	436	5943 Tan
>	437	5373 Lt. Tan
C	498	3072 Dk. Christmas Red
\	738	5372* Vy. Lt. Tan
U	762	8510 Vy. Lt. Pearl Grey
8	801	5475 Dk. Coffee Brown
S	814	3044 Dk. Garnet
V	815	3073 Med. Garnet
C	816	3000* Garnet
≡	823	7982 Dk. Navy Blue
≡	902	3044+ Vy. Dk. Garnet
•	3371	5382* Black Brown

Special Instructions:

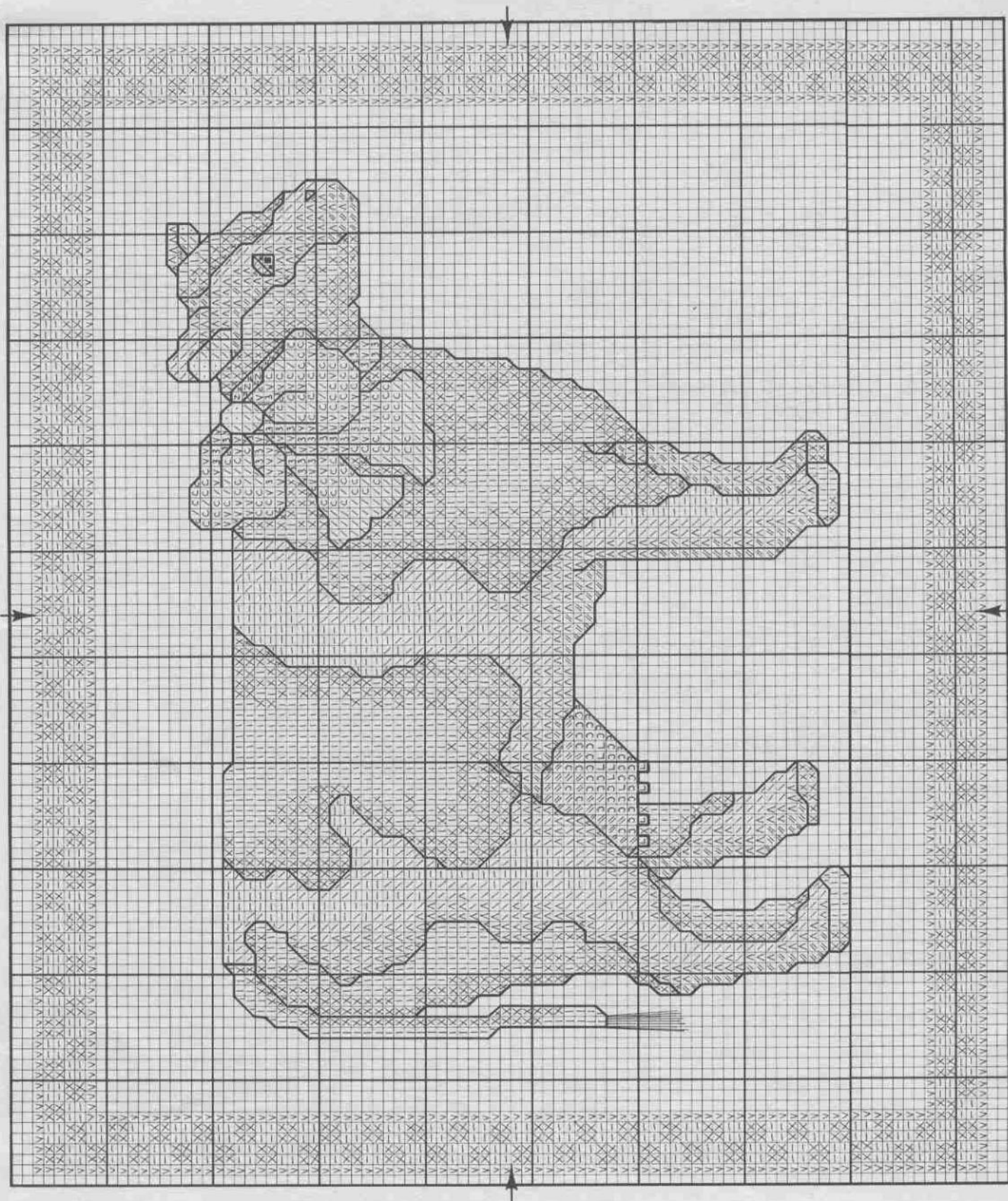
BACKSTITCH:

Pantaloons, bow and stripes within dress—902.
Shoes—823.
Dress and Socks—413.
Bear and sailboat—3371.

DIMENSIONS

Fabric Count	Design Area	Cutting Dimensions
22	5 x 3½	11 x 9¾
18	6½ x 3¾	12½ x 9¾
14	7¾ x 5	13¾ x 11
11	10 x 6¾	16 x 12¾

106
67



Special Instructions:

DMC COLORS	J.P. COATS COLORS	
762	8510	Vy. Lt. Pearl Grey
776	3125*	Med. Pink
818	3067+	Baby Pink
844	—	Ultra Dk. Beaver Grey
899	3152+	Med. Rose
948	2331	Vy. Lt. Peach Flesh
3326	3152*	Lt. Rose
3371	5382*	Black Brown

Tail—long, running stitches in black.

DIMENSIONS		
Fabric Count	Design Area	Cutting Dimensions
22	1 3/8" x 3 1/8"	7 3/8" x 9 1/8"
18	1 5/8" x 3 7/8"	7 7/8" x 9 7/8"
14	2 1/8" x 5"	8 3/8" x 11"
11	2 3/4" x 6 3/8"	8 3/4" x 12 3/8"

Special Instructions:

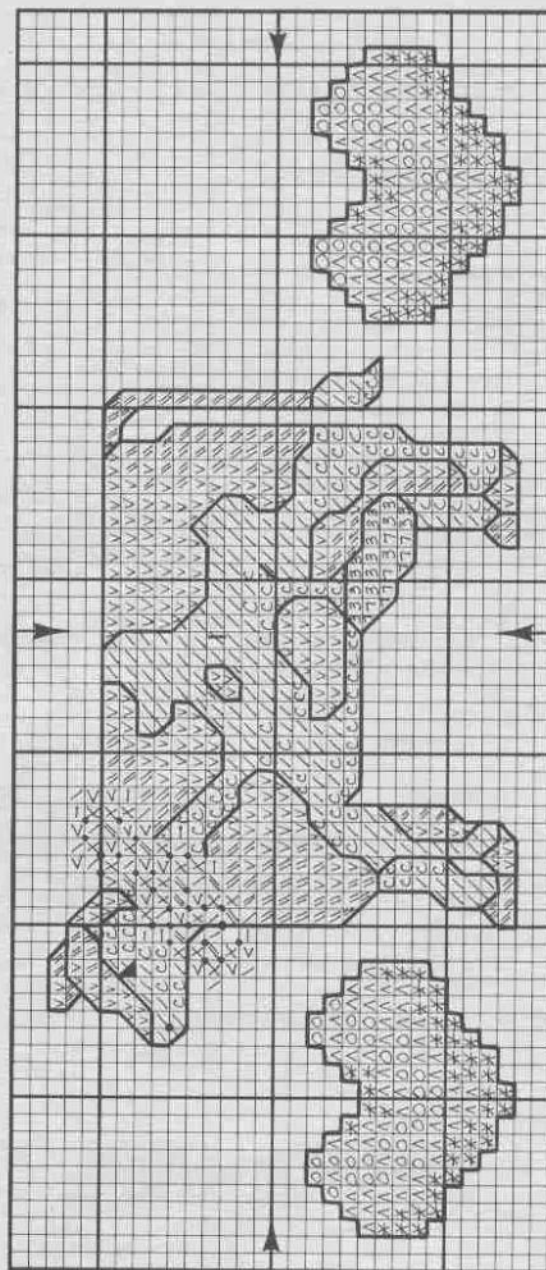
BACKSTITCH:

FRENCH KNOTS:

On wreath alternating 899, 776, 818,

3326.

On cow's nose—black.



257

69

Hildegard Holstein

	DMC COLORS	J.P. COATS COLORS
•	White	1001
Z	Black	
	311	7980 Med. Navy Blue
X	312	7979 Lt. Navy Blue
//	318	8511 Lt. Steel Grey
3	319	6246 Vy. Dk. Pistachio Green
I	320	6017 Med. Pistachio Green
L	322	7978 Vy. Lt. Navy Blue
U	334	7977* Med. Baby Blue
	335	3153+ Rose
7	367	6018 Dk. Pistachio Green
O & C	415	8397+ Pearl Grey
\	434	5365+ Lt. Brown
^	435	5365 Vy. Lt. Brown
o	436	5943 Tan
<	437	5373 Lt. Tan
	745	2292* Lt. Pale Yellow
\	762	8510 Vy. Lt. Pearl Grey
6	776	3125* Med. Pink
8	818	3067+ Baby Pink
V	819	3335+ Lt. Baby Pink
/	844	— Ultra Dk. Beaver Grey
9	890	6021 Vy. Dk. Forest Green
	899	3152+ Med. Rose
	3325	7976 Baby Blue
■	3371	5382* Black Brown

Special Instructions:

BACKSTITCH:

Cow and bonnet—black.
Flower stems—890.
Add eyelashes last—black.

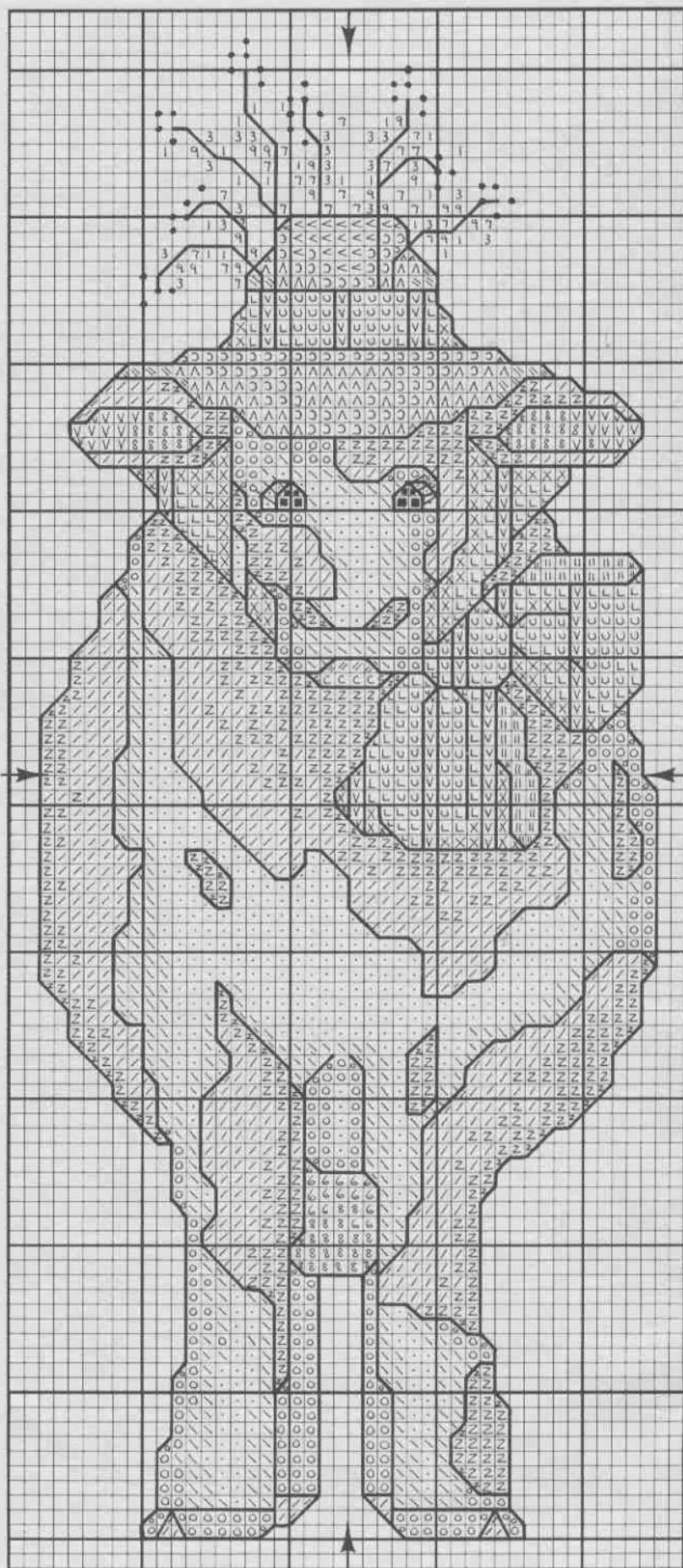
FRENCH KNOTS:

Flowers—899, 335, 745, & 3325 (alternating colors).

DIMENSIONS

Fabric Count	Design Area	Cutting Dimensions
22	4½ x 1¾	10½ x 7¾
18	5½ x 2¼	11½ x 8¾
14	7¾ x 2¾	13¾ x 8¾
11	9¾ x 3¾	15¾ x 9¾

103
42



Soft Sculpture Pattern for Master Beauregard T. Bunnythumper

BLOUSE:

Gather upper edge of front A between the small dots. Turn in back B along fold line, turning in $\frac{1}{4}$ " on the raw edge. Press. Stitch along pressed edge. With right sides together, pin sleeve to armhole edges of front and back sections. Stitch. Then stitch side seam.

MATERIALS NEEDED:

FABRICS:

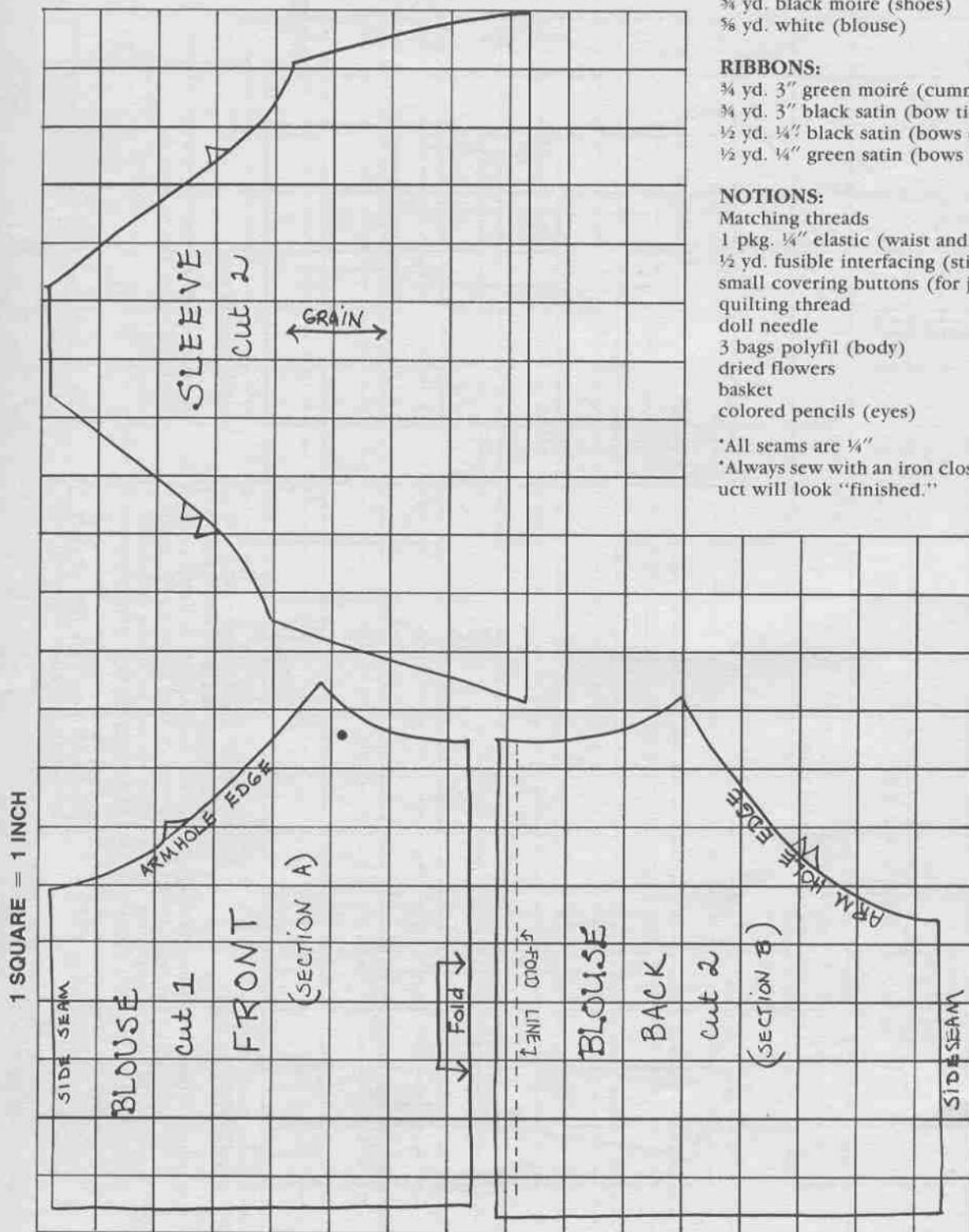
$1\frac{1}{2}$ yd. unbleached muslin (body)
 $\frac{1}{4}$ yd. light peach (lining for ears)
 $\frac{3}{4}$ yd. black (jacket)
1 yd. green (jacket lining)
 $\frac{3}{4}$ yd. black floral (knickers)
 $\frac{3}{4}$ yd. black moiré (shoes)
 $\frac{5}{8}$ yd. white (blouse)

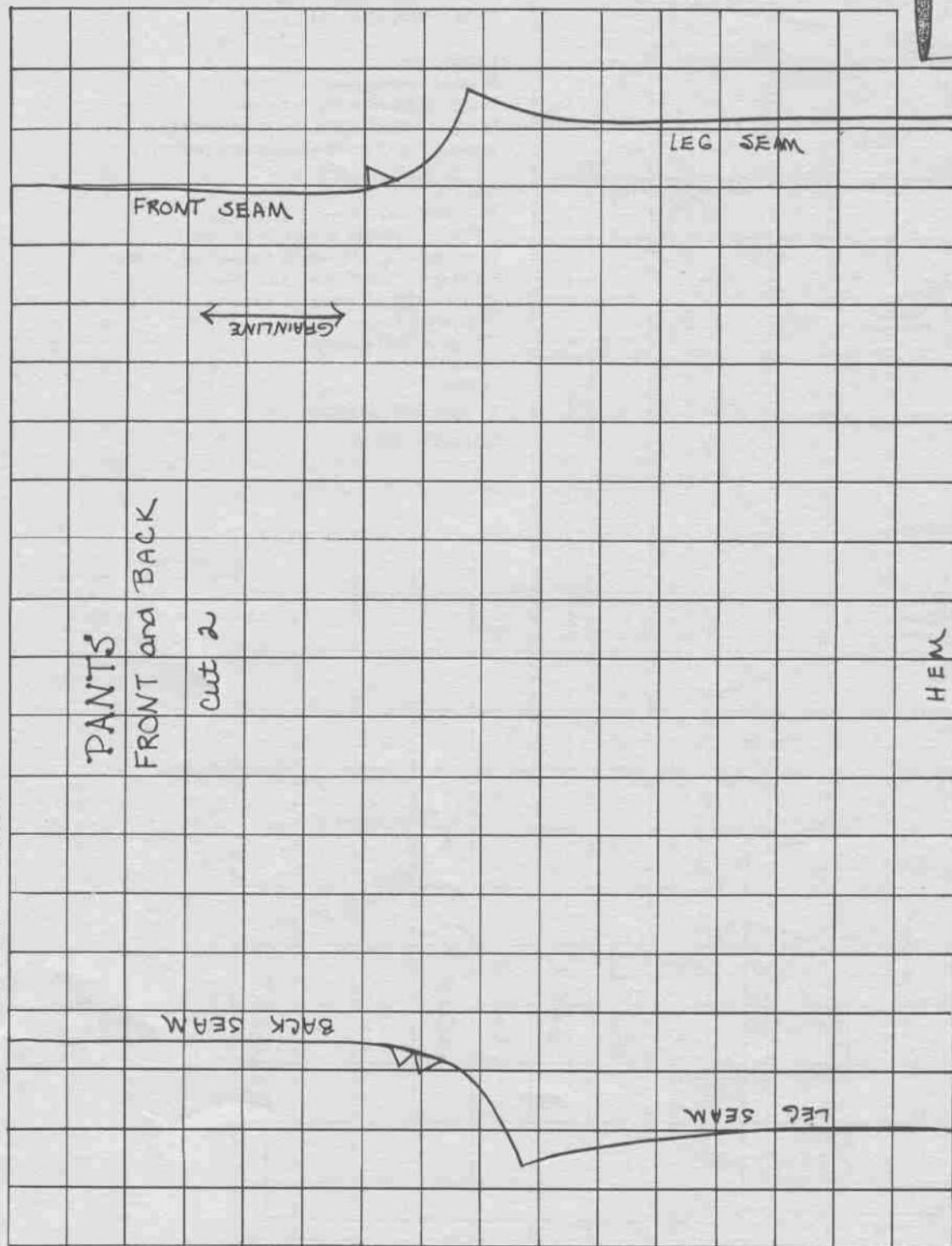
RIBBONS:

$\frac{3}{4}$ yd. 3" green moiré (cummerbund)
 $\frac{3}{4}$ yd. 3" black satin (bow tie)
 $\frac{1}{2}$ yd. $\frac{1}{4}$ " black satin (bows on shoes)
 $\frac{1}{2}$ yd. $\frac{1}{4}$ " green satin (bows on knickers)

NOTIONS:

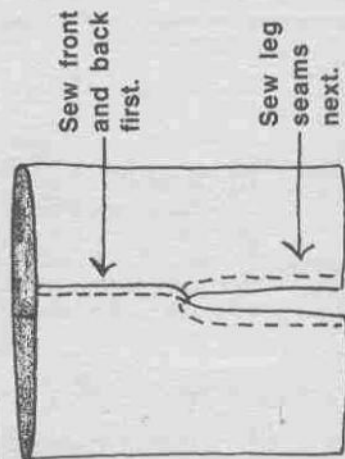
Matching threads
1 pkg. $\frac{1}{4}$ " elastic (waist and ankles)
 $\frac{1}{2}$ yd. fusible interfacing (stiffening for ears)
small covering buttons (for jacket)
quilting thread
doll needle
3 bags polyfil (body)
dried flowers
basket
colored pencils (eyes)
*All seams are $\frac{1}{4}$ "
*Always sew with an iron close by. The finished product will look "finished."





PANTS:

With right sides together, sew front and back seams. Trim and press. Then, sew leg seams. Turn under $\frac{1}{2}$ " at the waist. Press. Sew, leaving an area open for the elastic. Measure around bunny's waist and pull elastic a little tightly. Then cut the elastic and run it through the casing. Secure. Close the opening. Repeat the same procedure for each leg.



DECORATION:

A basket of dried flowers sewn in his hands make him ready to go "a-courtin'."

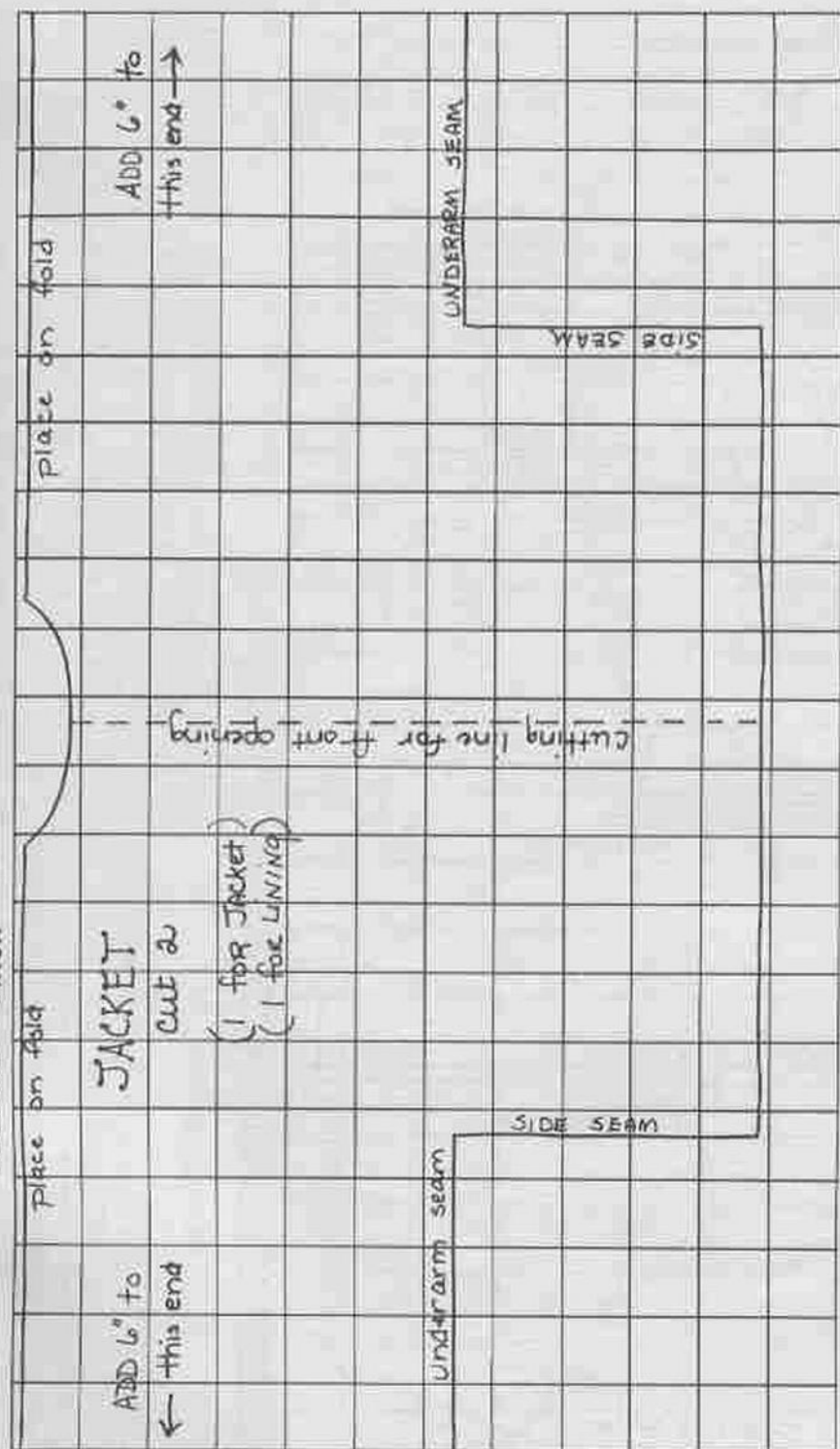
Cover 4 small buttons from the pants fabric and place where shown on the model. Tack or slipstitch the jacket closed. Using the 3" black satin ribbon, tie a bow around the neck. Trim the bow to desired size.

Pull shoes on (they should fit snugly. If not, then take another seam.) Secure a bow on each toe with the $\frac{3}{4}$ " black satin ribbon.

DRESSING:

Place blouse on bunny, securing at the back. Pull on the pants, securing over the blouse hem. Add $\frac{1}{4}$ " green bows to the sides of the ankles. Using the 3" green moiré ribbon, wrap around waist and secure at the back.

Now, putting the jacket on, turn the cuffs up and the collar back.

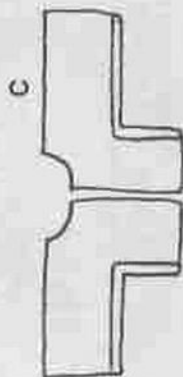
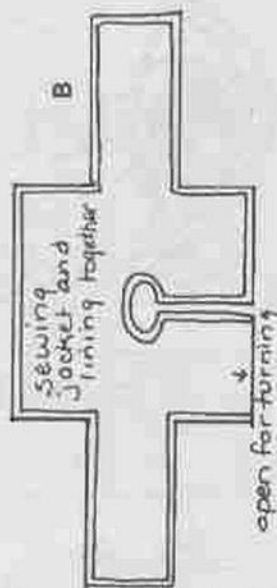
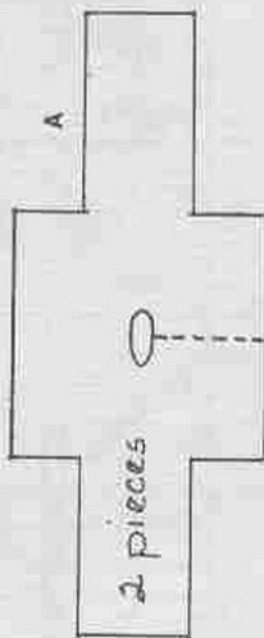
**JACKET:**

This jacket will be fully lined so that when the collar and cuffs are turned back, the contrasting color will be visible.

Cut the jacket and lining as directed. Now open each section out and cut a front opening on the dotted lines on both sections.

With right sides together, sew, as if making a pillowcase by stitching all the way around the edge, leaving the lower front jacket edge open for turning (B).

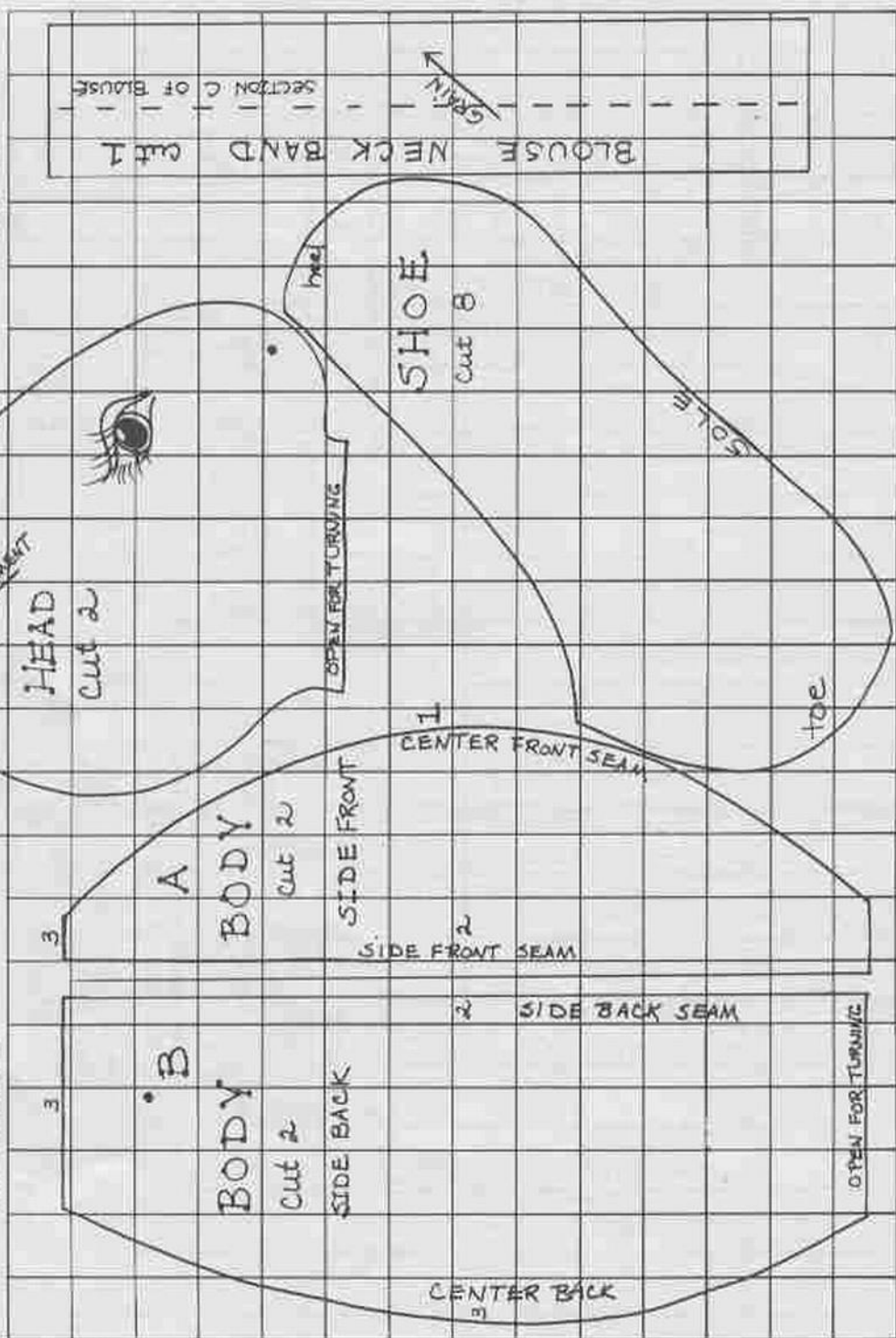
Trim seams. Turn and press. Slip-stitch the opening closed. With jacket right sides together, sew the side and underarm seams (using a small $\frac{3}{8}$ " seam) (C). Turn and press.



HEAD:

With right sides together, sew, leaving the neck area open for turning and stuffing. Turn, stuff, and close the opening.

1 SQUARE = 1 INCH



FACE:

With quilting thread and doll needle, make several journeys through the small dots, and drawing slightly, cause a pucker. Blush the pucker (nose) tip with a powder blush. Pull quilting thread through at nose area and clip to desired length for whiskers (as many or as few as desired).

EYES:

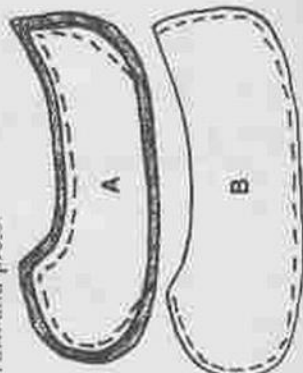
Transfer or copy the eye onto the face. Color the pupil black, leaving the small square uncolored. Color the iris green. Then, outline the entire eye in a black razor point pen. Use a little brown to shade the eyelid.

BODY:

With right sides together, sew the center front seam first (1). Trim seam. Press. Then, right sides together, sew side fronts to side backs (2). Trim seams. Press. Next, sew center back seam and cross the top of the body (3), leaving an area at the bottom open for turning and stuffing. Turn, stuff, and close the opening. Set aside.

SHOE:

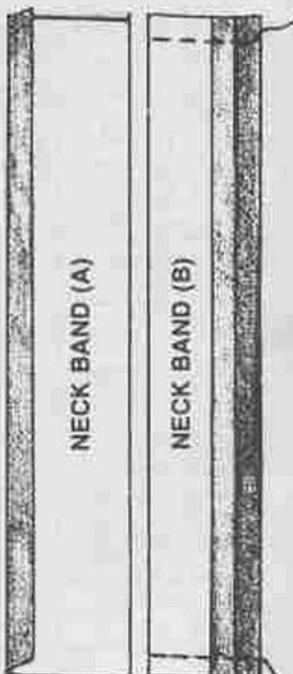
With right sides together, sew from the back of the heel across the top and down the toe, leaving the sole area open for turning (A). Trim seams, turn and press. Repeat with other sections. Place the fully-lined pieces together and sew from the top of the toe, across the sole, and up the heel (B). Trim the seam. Turn and press.

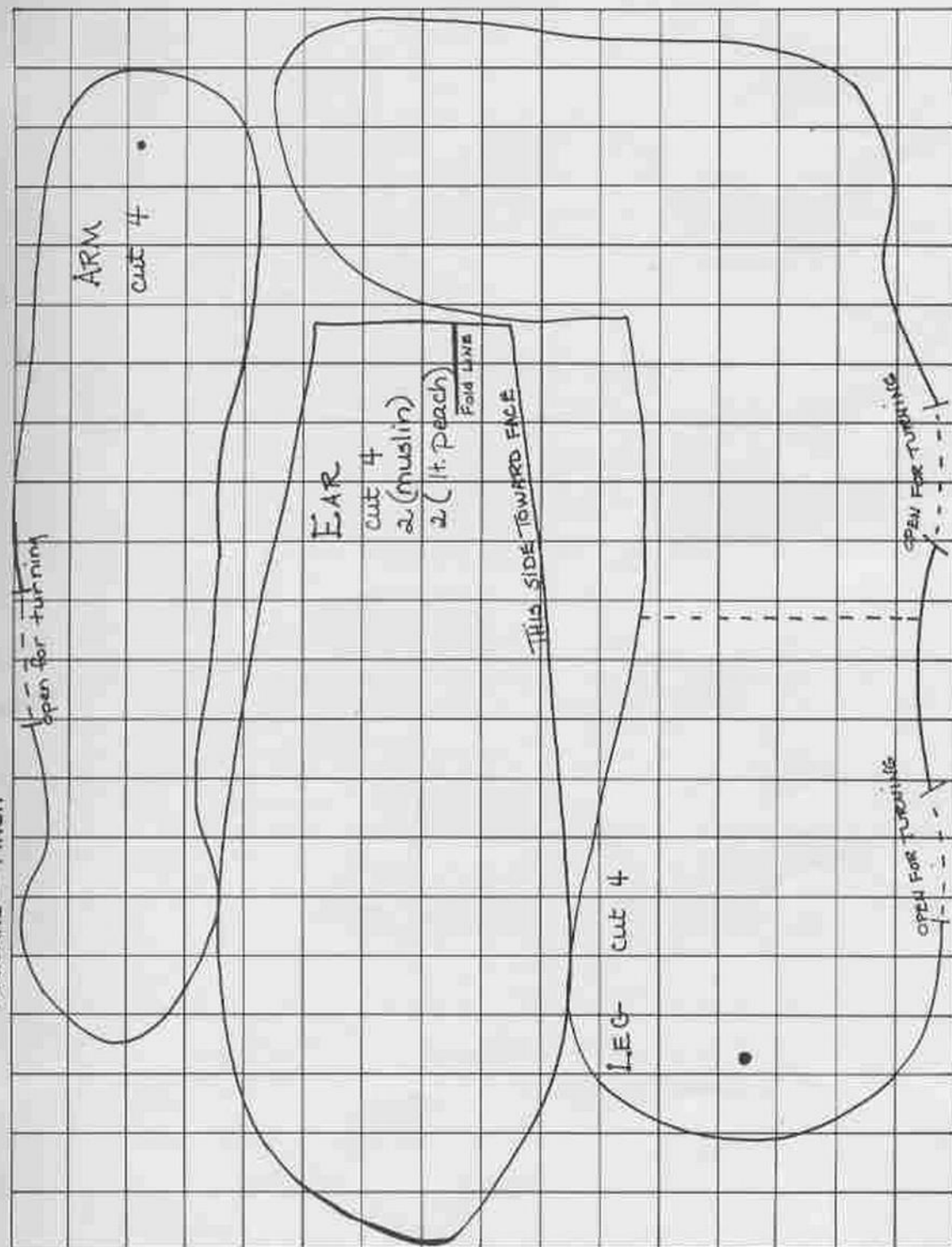


upper edge of blouse, easing to fit. Adjust gathers. Stitch, keeping pressed edge free. Press seam toward neck band. Slipstitch pressed edge of neck band over seam. Hand or machine hem sleeves and blouse. Set aside.

NECK BAND C:

Turn in seam allowance on long edge of neck band (A). Press. Right sides together, fold neck band along fold line. Stitch ends together. See diagram (B). Turn and press. To attach neck band to blouse, with right sides together, pin remaining long edge of neck band to



**ARM:**

Repeat as with other body sections, leaving an area open for turning and stuffing. Trim seam, turn, and stuff.

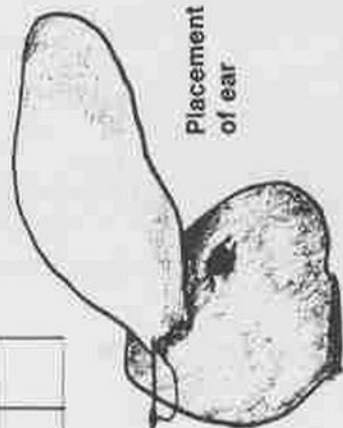
Set aside.

LEG:

With right sides together, sew, leaving 2 areas open on the back of the leg for turning and stuffing. Turn. Then sew across the knee area where indicated on dotted lines, so that the leg will bend normally at the knee. Stuff upper and lower areas tightly and close the openings. Set aside.

EAR:

Using the fusible interfacing, prepare the 1 ft. peach sections. Then with right sides together, sew, leaving an area open for turning. Trim seams, turn, and press. Close openings. Set aside.



Placement of ear

ASSEMBLY:

With doll needle and quilting thread, join legs to body by making several journeys through the dots indicated on the legs and body until secure. Join arms to body by repeating the same procedure. Join head to body by hand sewing around the

neck. Attach ears by folding where indicated at the top of the ear. Place in position (see guideline on pattern), making sure that the peach side is to the front. Hand stitch on the underside along guideline.