

Alma Lynne
DESIGNS

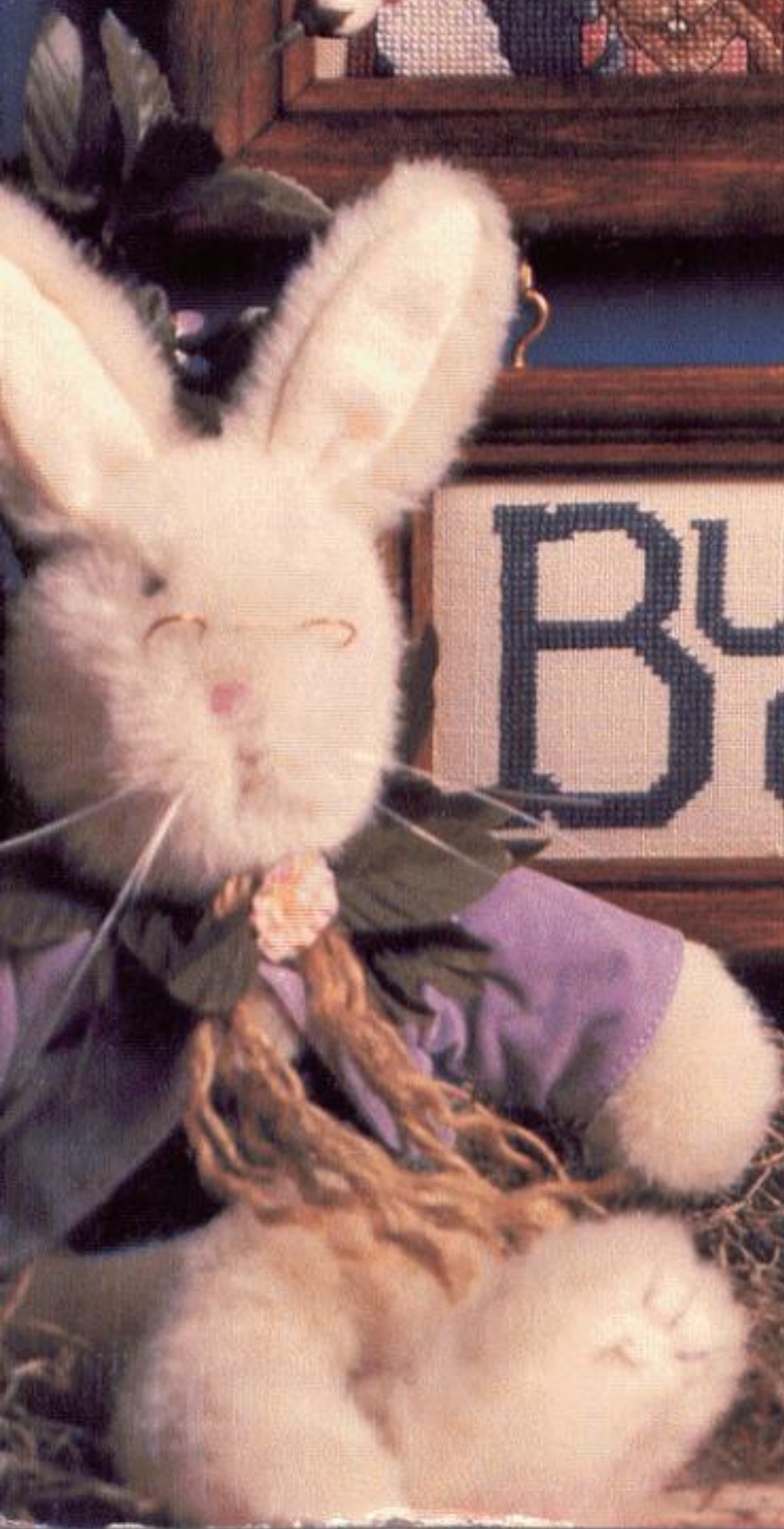
BUNNY COLLECTOR

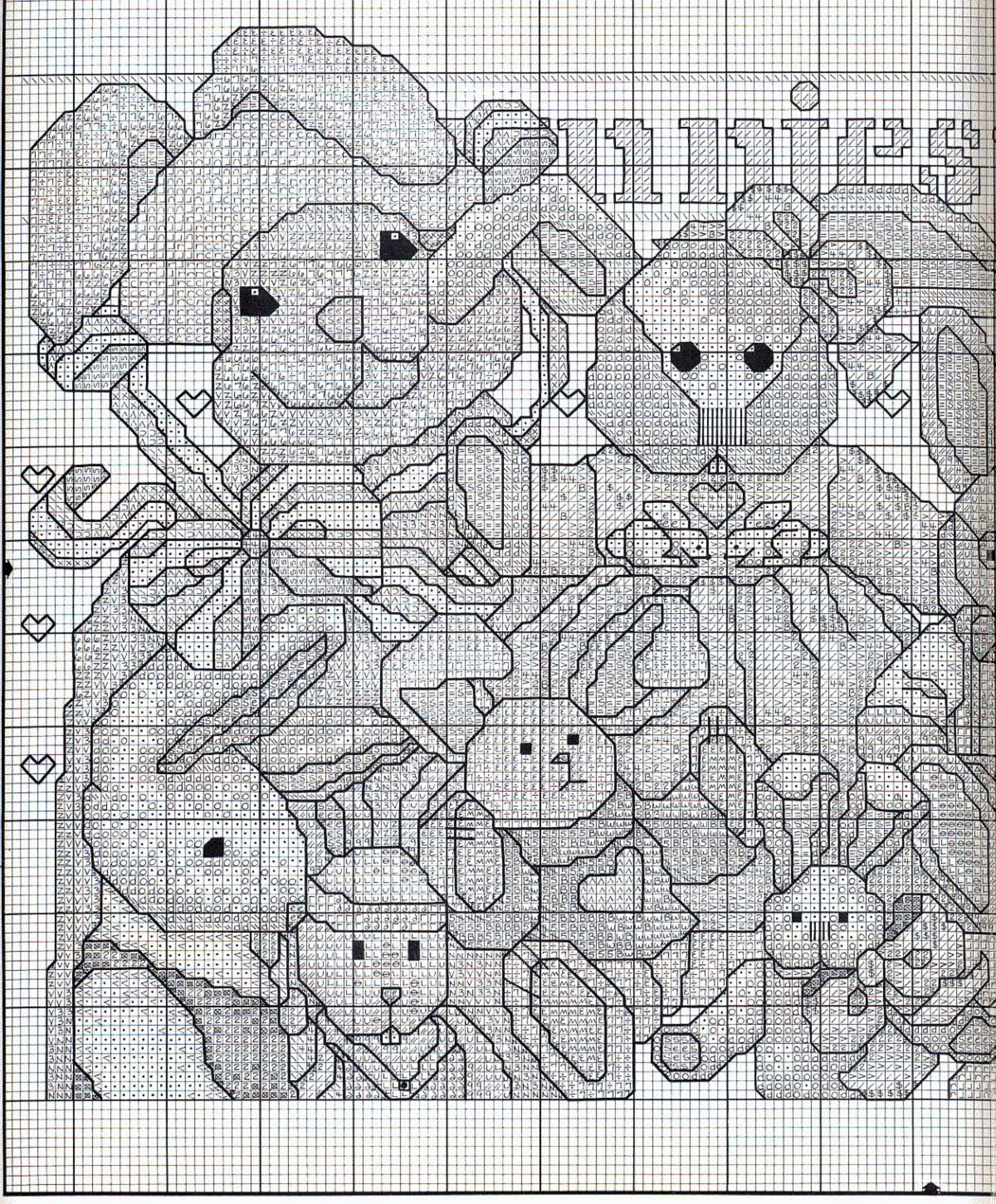
\$3.95
ALX-121

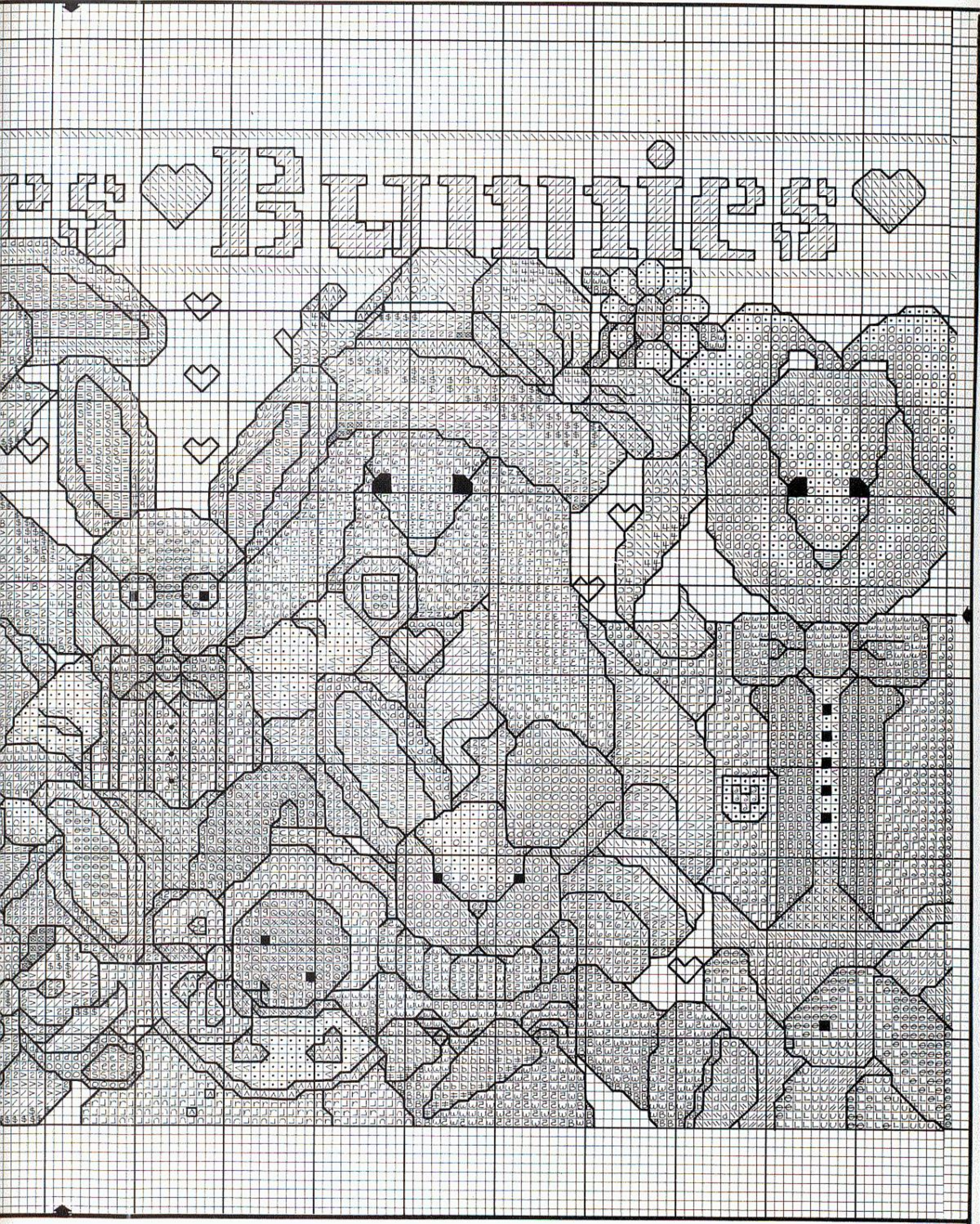
52.97
HOBBY LOBBY
\$3.56

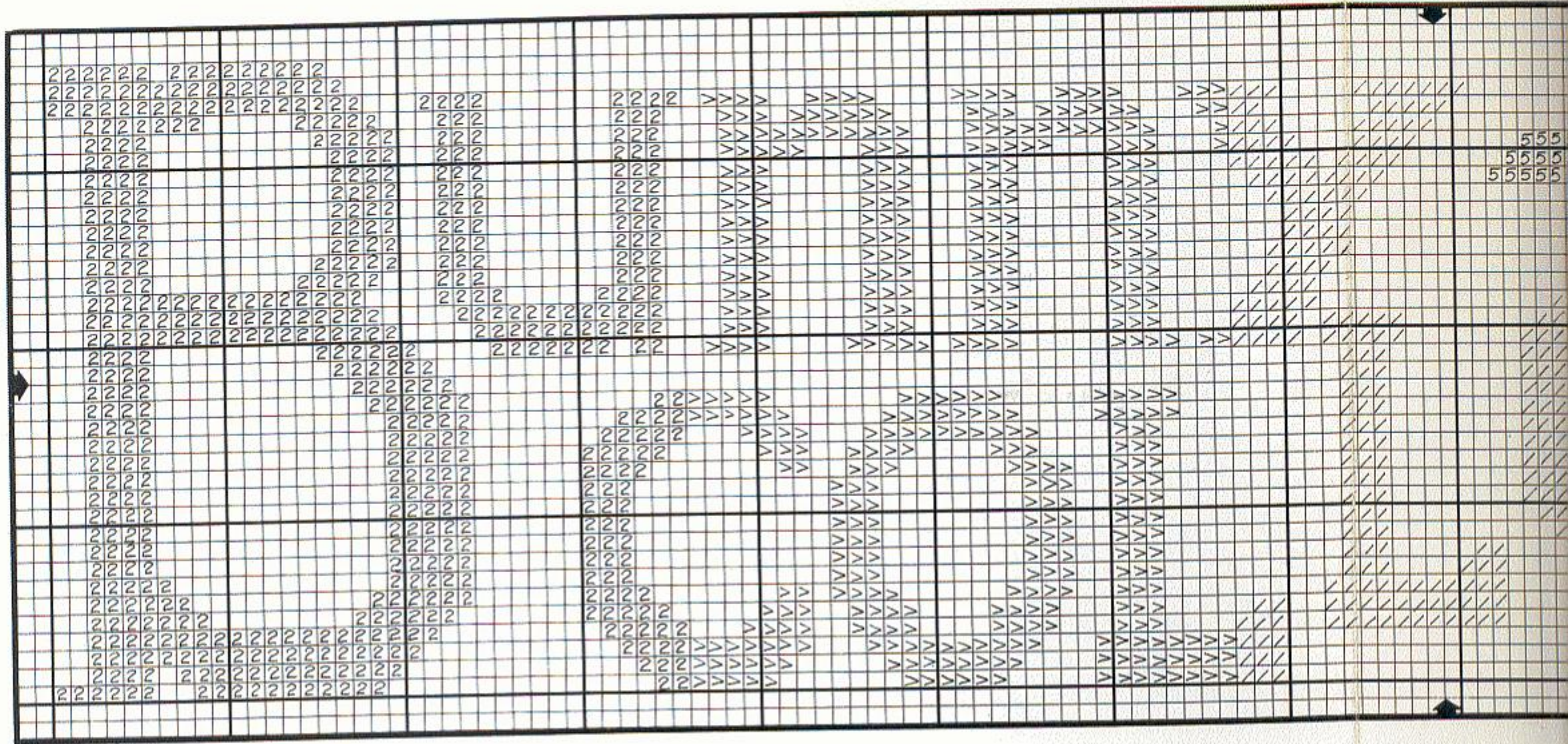


Bunny
collector









BUNNY COLLECTOR

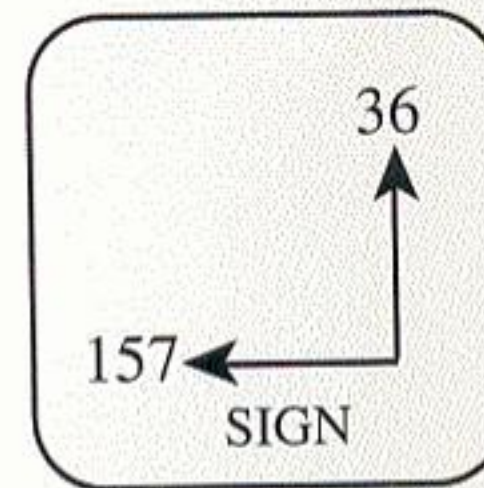
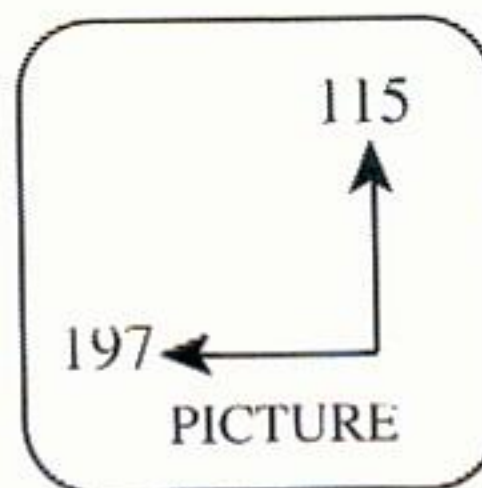
SPECIAL INSTRUCTIONS

BACKSTITCH:

1. Glasses and chain on necklace - 002 HL Gold Kreinik Blending Filament
2. Grey and white bunnies - 844
3. Brown, gold and beige bunnies - 3371
4. Big striped bow and all 221 areas - 902
5. All 930 areas - 939
6. All 924 areas - 924
7. All else - 3371
8. Half stitch "BUNNIES" and heart for a stenciled look.
9. It is not necessary to backstitch "BUNNIES".

SATIN STITCH:

1. Satin stitch the hearts in the background using 2 strands of 224.
2. Satin stitch bunnies' noses as indicated using 2 strands of 761.



PLEASE SUPPORT YOUR RETAIL SHOPS

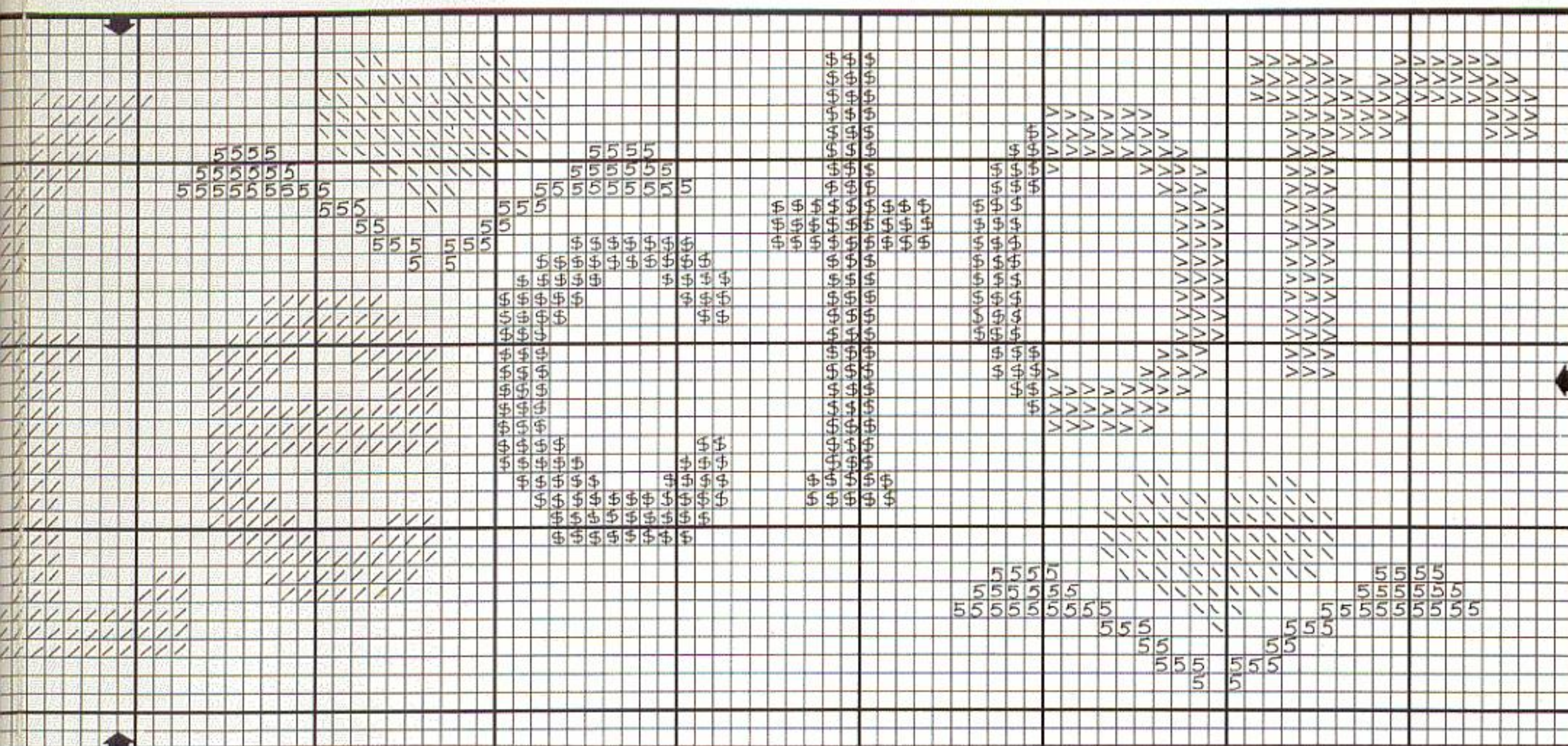
However, if you are unable to purchase our products locally or desire further information about our extensive line of cross-stitch, duplicate stitch and fabric crafting products - send \$2.00 to:

Alma Lynne Designs, Inc. 3600 N. Kings Hwy, Myrtle Beach, SC 29577

NOTE: Reproduction of any designs contained herein, without prior approval, is prohibited under U.S. Copyright Law. All rights reserved.



0 8056



DIMENSIONS (sign)

<u>Fabric Count</u>	<u>Design Area</u>	<u>Cutting Dimensions</u>
22	1 5/8" x 7 1/8"	7 5/8" x 13 1/8"
18	2" x 8 3/4"	8" x 14 3/4"
14	2 5/8" x 11 1/4"	8 5/8" x 17 1/4"
11	3 1/4" x 14 1/4"	9 1/4" x 20 1/4"

DIMENSIONS (picture)

<u>Fabric Count</u>	<u>Design Area</u>	<u>Cutting Dimensions</u>
22	5 1/4" x 9"	11 1/4" x 15"
18	6 3/8" x 11"	12 3/8" x 17"
14	8 1/4" x 14 1/8"	14 1/4" x 20 1/8"
11	10 1/2" x 17 7/8"	16 1/2" x 23 7/8"

MODEL INFORMATION

CREDITS

Bunny Collector was stitched over 2 threads on 28 ct. Ivory Annabelle (#3240-217) from Zweigart®.

Fabric -  **ZWEIFART®** - Somerset, NJ
 Tavern Signs - Taylor's Workshop - Durham, NC, 27703
 (919) 596 - 5362
 Metallics - Kreinik Mfg. Co.- Parkersburg, WV
 Framing - The Howard Gallery - Myrtle Beach, SC
 Stitchers - Linda Jackson & Lisa Rabon



Alma Lynne Designs, Inc.
3600 N. Kings Hwy, Myrtle Beach, SC 29577

4th Printing - July 1995



○

© 1994 Alma Lynne Designs, Inc.