

pellon[®]

*The Magic
in the Middle*

Frou Frou Bag Intermediate

Sewn By
Sara Lawson

<http://www.sewsweetness.com>



This bag features ruffled flaps, snap closure and an adjustable strap. The small front pockets are 3-dimensional. Beautiful detailing combines with functionality with four inner pockets to hold lots of stuff.

Fabrics Needed

Exterior Fabric	1 yard
Lining Fabric	1 yard
Ruffles	1 fat quarter

Materials Needed

Pellon [®] Fusible Woven Interfacing SF-101	3 1/2 yards
Pellon [®] Fusible Fleece [®] 987F	1 1/2 yards
Pellon [®] TruGrid [™] 810	
Metal Slider and rectangle ring	One 1 1/2"
Magnetic Snaps	3
Thread	

Tools Needed

Sewing Machine and related supplies
Rotary cutting tools and supplies
Ruler
Marker or chalk

Graphic Artist Alexandra Henry

PERMISSION IS GIVEN TO REPRODUCE FOR PERSONAL USE ONLY ©2011 - PCP Group, LLC

Instructions

Cut pieces following instructions on TruGrid Layout page. Cut 3 pieces of fleece, 2" x 2".

Fusing the Pieces

Fuse the woven interfacing to the wrong side of all the corresponding pieces. The inner pockets do not get fused with woven interfacing.

Fuse the fusible fleece to the woven interfacing for all exterior fabric pieces and the lining main panels and side panels.

Sewing the Strap

Fold the strap in half along the long edge. Press. Fold the bottom long edge of the strap up toward the creased center. Press. Fold the top long edge down toward the creased center. Press.



Topstitch along both long edges, 1/8" from each edge.

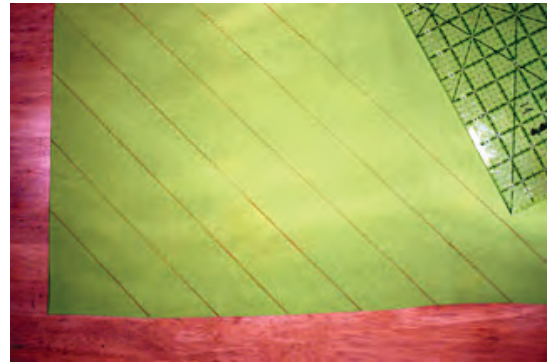


Repeat these two steps with strap extender.



Making the ruffle

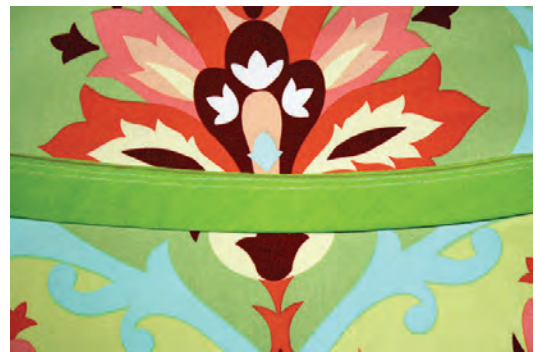
To create a bias strip, lay out the fat quarter. Use a ruler to cut 2" strips at a 45° angle, across the entire fat quarter.



Sew all the strips together. Place two strips, right sides together at a 90° angle. Draw a diagonal line at 45° connecting the top left and the bottom right corners. Stitch on the drawn line. Trim seam allowance to 1/4". Press seam open.



Press bias strip in half lengthwise, wrong sides together. Cut bias stripes into one 46" length and two 24" lengths. Sew a row of basting stitches 1/8" from raw edge. Sew a second row of basting stitches 1/4" from raw edge.



Gently pull the basting threads on each side to gather the fabric. Gather fabric until longer strip is 23" and the two shorter strips are 12". Distribute gathers evenly. Set aside.



Assembling the Flaps - Instructions are for large flaps. Small flaps follow the same instructions except for the last step.

Fold large flap lining in half lengthwise. Finger press a crease. Mark crease with fabric marker 1" up from curved edge.

Using the smaller half of the magnetic snap, take out the washer and place it on the mark. Mark where the slits will be. Cut small slits where the marks for the slits are. Repeat this step for the center of one of your 2" x 2" scraps of fleece to reinforce the fabric against the pull of the magnetic snap.

HINT: A dab of Fray Check on the slits will help the fabric hold up better.

Slid the prongs of the snap through the right side of the large flap lining. Place the fleece square then the washer over the prongs. Close the prongs outward (use pliers with a scrap of fabric over the metal if necessary), making sure they lay flat.



Pin the long ruffle along the curved edge of the exterior large flap. Align the raw edge of the ruffle with the raw edge of the curve of the flap. Start the ruffle 1/2" from the beginning edge easing the ruffle toward the outer corner of the flap. Stitch along the curved edge using a 1/4" seam allowance. Trim excess ruffles.



NOTE: Small flaps and large flaps are treated differently at this point in the assembly.

Place large flap and large flap lining right sides together. Sew along the curved edge just inside the stitches from the previous step. Notch the seam every 1/2". Turn right side out and press.

Topstitch two rows of top stitching along the curved edge.

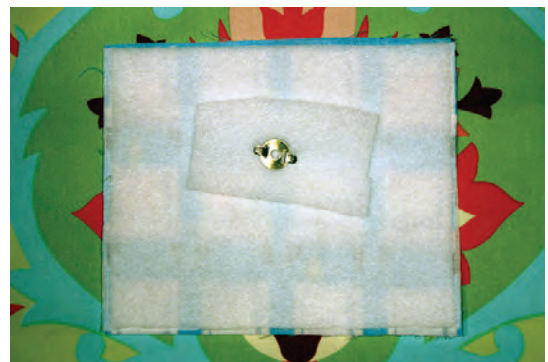
For small flaps, place flap and flap lining right sides together. Start and stop 1" in on both sides of the flap, along the straight edge of the flap. Trim corners, turn right side out and press. Press opening in 1/2".

Top stitch all edges with two rows of top stitching.



Assemble the exterior small pockets

Using the larger half of the magentic snap, fold the exterior small pockets in half along the 6" edge. Measure down 2" from the top and insert the snap using the same steps you used for the flaps.



Place small pocket and small pocket lining right sides together. Leaving a 4" opening on the side closest to the snap, sew pocket on all sides. Trim corners. Turn right side out and press. Turn opening in 1/2".

Topstitch along the 6" edge with the opening with a 1/4" seam allowance.

Repeat steps for other pocket.



Place pocket panel and pocket panel lining right sides together. Starting and ending 5" in from the edge on one of the 13 1/2" sides, sew around the panel. Trim corners. Turn right sides out. Press panel, turning open edge in 1/2".



Place the pocket and pocket panel with the opening side right sides together, aligning the ends of the pocket panel with the top of the pocket. Sew using a 1/4" seam allowance. Press seam toward the small pocket.

Repeat for other small pocket.

HINT: Sew both sides first then the bottom and corners to distribute the pocket panel evenly.

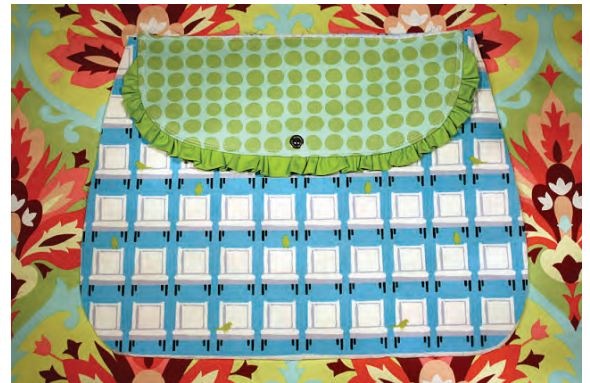


Measure 1 1/4" up from bottom and 2" in on one of the main panels. Draw a rectangle 4" high and 5" wide with the bottom left corner at the point. Flip pocket panel exterior side out. Place one small pocket between these lines and pin.



Attaching the Flaps

Place the large flap on the main panel without pockets with exterior fabrics facing as shown. Pin in place. Sew using a 1/4" seam allowance.



Pin a small flap at the top of a small pocket with the exterior fabrics facing. Line up flap snap with pocket snap. Topstitch the straight edge of the flap 1/4" from edge.

Repeat for other small flap and pocket.



Assemble the exterior

Fold the exterior main panel without the pockets in half, marking the center point 3 3/4" down from the top edge. Insert the large half of a magnetic snap using the same steps previously done for snaps.

Fold the exterior side panel in half on the short edge. Make a mark 9" in from short raw edges and 3/4" in from long edge. Connect the two marks with a line. Repeat for other edge and for both ends of the side panel.

Cut along those lines.



Place one of the main panels and the side panel right sides together matching raw edges. Pin in place easing around the curve. Stitch using a 1/2" seam allowance. Cut notches every 1/2" along curved edges. Press seam open.



Repeat to attach other main panel to the other side of the side panel.



Installing metal slide and rectangle

Take the metal rectangle and slide it onto the middle of your strap extender. Place the strap extender against the exterior side panel on the left side of the bag. Baste in place using a 1/4" seam allowance.



Slide strap through the metal slide. the strap should go over and under the metal bar in the middle as shown.



Baste one end of the strap to the right side of the exterior panel using a 1/4" seam allowance.



Slide the loose part of the strap through the metal rectangle that is attached to the strap extender.



Slide the loose part of the strap over and under the metal bar on your slide. It will go underneath the part of the strap that was placed through the slide previously. Fold about 1/2" of the very end of the strap under and topstitch that end as shown.



Assemble the lining

Place the two inner pocket pieces right sides together. Sew along the straight edge.

Repeat for other pocket.



Press seam open. Turn fabrics wrong sides together. Press again. Topstitch the edge 1/4" in from edge.

Repeat for other pocket.



Align inner pocket on one of the main panel linings as shown. Baste inner pocket to the lining main panel using a 1/4" seam allowance. Finger press a crease down the center of your lining panel. Sew on top of inner pocket only down that crease (this will divide the pocket into two sections).

Repeat for other main panel lining and pocket.



Attach the lining main panels to the lining side panels following instructions for exterior main panels on Page 8 using a 5/8" seam allowance instead of a 1/2" seam allowance to make the lining fit snugly within the bag. Leave one 6" opening on the bottom of lining main panels for turning the bag as shown.



Place the exterior bag and lining right sides together with the exterior of the bag inside the lining. Push the strap and flap inside between the layers. Sew along the top edge.

Turn bag right side out through opening in the lining.

Sew the opening in the lining closed with a 1/4" seam allowance or by hand. Press well.



Frou Frou Bag Templates

Small Flap

Cut two exterior fabric

Cut two lining

Cut two woven interfacing

Cut two fusible fleece

(trim by 1/2")

Cut on fold

Large Flap

Cut one Exterior Fabric

Cut one lining

Cut one Woven Interfacing

Cut one Fusible Fleece (trim by 1/2")

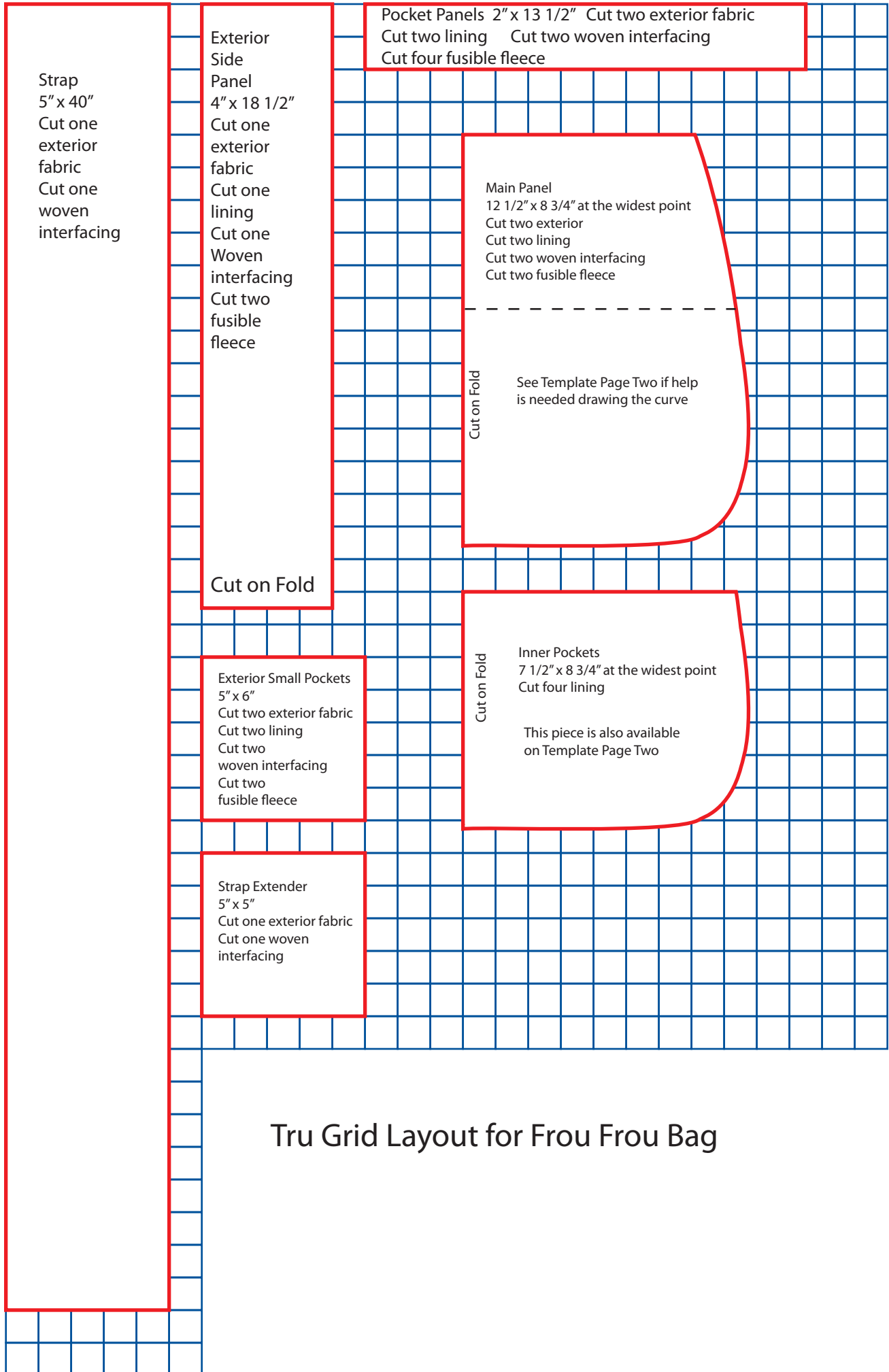
Cut on fold

Frou Frou Bag Templates - Page Two

Cut on fold

Pockets
Cut four lining

NOTE: This template can be used to check
the curve on your TruGrid Exterior Bag Curve
if needed



Strap
5" x 40"
Cut one exterior fabric
Cut one woven interfacing

Exterior Side Panel
4" x 18 1/2"
Cut one exterior fabric
Cut one lining
Cut one woven interfacing
Cut two fusible fleece

Pocket Panels 2" x 13 1/2"
Cut two exterior fabric
Cut two lining
Cut two woven interfacing
Cut four fusible fleece

Main Panel
12 1/2" x 8 3/4" at the widest point
Cut two exterior
Cut two lining
Cut two woven interfacing
Cut two fusible fleece

Cut on Fold

See Template Page Two if help is needed drawing the curve

Cut on Fold

Exterior Small Pockets
5" x 6"
Cut two exterior fabric
Cut two lining
Cut two woven interfacing
Cut two fusible fleece

Inner Pockets
7 1/2" x 8 3/4" at the widest point
Cut four lining

Cut on Fold

This piece is also available on Template Page Two

Strap Extender
5" x 5"
Cut one exterior fabric
Cut one woven interfacing

Tru Grid Layout for Frou Frou Bag