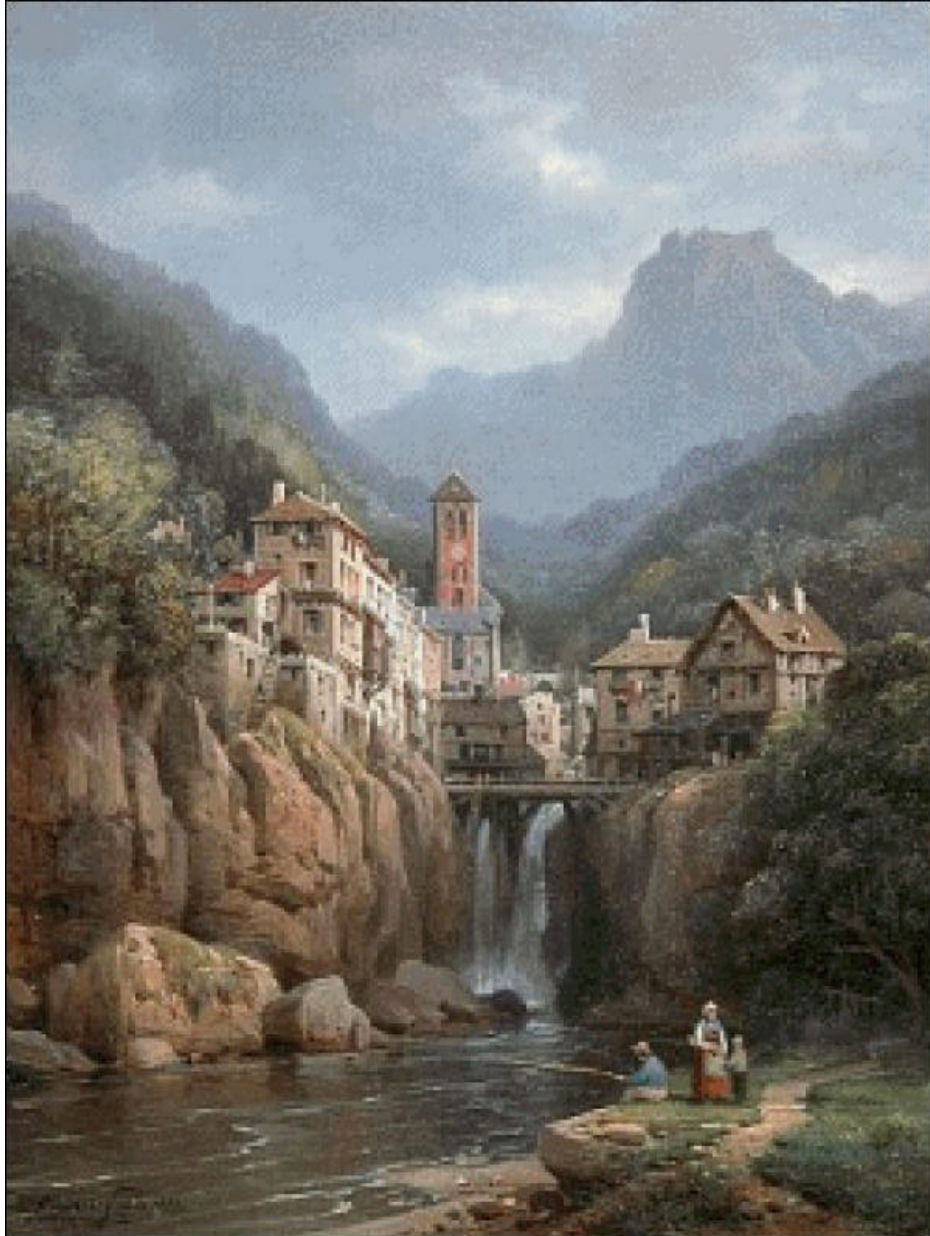




www.goldenkite.com

1028 Vue de Kanderstein, Tyrol (small)



This pattern may not be copied, sold or in any other way handled in any way that violates the international copyright laws. If you get hold of this pattern (and or this document) in any other way than via a direct download from www.goldenkite.com or via a mail from us, you should report that to us at legal_actions@goldenkite.com .

Copyright (c) 2007-, Golden Kite. All rights reserved.

Copyright (c) 2007-, Golden Kite (Golden K.)
Internet: www.goldenkite.com

e-mail: info@goldenkite.com

Instructions

Thank you for choosing Golden Kite products!
We hope you will have lots of fun with this cross-stitch pattern!

Fabric

Press the fabric with an iron if needed. A good thing to prevent the fabric from fraying is to machine zigzag the edges.

On large patterns, it is easiest to start from the upper left corner of the design. Make sure you have the proper margins before starting and that the fabric piece is of the correct size. The best way to verify this is to count all stitch positions on the fabric from the upper left corner downwards and to the right to make sure there is enough space for the design.

Some prefer to start in the center of the design instead. To locate the center of the fabric, fold the fabric in half both vertically and horizontally. The center is located where these two folds meet.

Stitches

Each length of DMC tread consists of six strands.
Use two of these strands for all stitches.

Note that some colors may be mixes (or blends) between two different pure colors. In that case take one strand of the two colors each and thread the two strands into the needle at the same time for stitching.

All stitches are full cross-stitches. No half-stitching and no back-stitching is necessary in this pattern.

All cross-stitches will be worked into the holes in the fabric from left to right. Always use the larger holes in the fabric for the stitches. Adjacent stitches should meet in the same hole. Make sure all stitches cross in the same direction.

Please be careful when washing the finished embroidery! The cotton thread may bleed when washed. Only hand wash it in lukewarm water. Remove excess water by roll it in a towel and lay it flat to air dry. Natural fabrics may shrink slightly when washed. We do not recommend washing the embroidery if not absolutely necessary and we take no responsibility for any damage that may occur.

When you start using this product you agree that Golden Kite (Golden K), or any people working for or in association with Golden Kite (Golden K), cannot be set responsible for any physical, mental, economical or other type of damage caused by this product (including this document, pattern, threads, needles and any other parts received by you from Golden Kite (Golden K)).

This pattern may not be copied, sold or in any other way handled in any way that violates the international copyright laws. If you get hold of this pattern (and or this document) in any other way than via a direct download from www.goldenkite.com or via a mail from us, you should report that to us at legal_actions@goldenkite.com .

Vue de Kanderstein, Tyrol (small)

Stitch Count	
Horizontal:	250
Vertical:	333

Recommended Fabric Color
Antique White

This table tells the size of the pattern (without any margins) and the size of the fabric required to stitch the pattern (including recommended margins). 3 inch margins have been added on each side in the 'Including Margins' row.

The sizes are given for 14, 16 and 18 stitches per inch fabrics.

Make sure to use the 'Including Margins' row when cutting the piece of fabric to be used. Also make sure that 3 inch margins are enough for your stitching technique and add more margin areas if necessary.

	14				16				18			
	Width		Height		Width		Height		Width		Height	
	cm	inch	cm	inch	cm	inch	cm	inch	cm	inch	cm	inch
Pattern:	46	17.83	61	23.78	40	15.6	53	20.81	36	13.875	47	18.5
Including Margins:	62	24	77	30	56	22	69	27	52	20	63	25
	10				12				24			
	Width		Height		Width		Height		Width		Height	
	cm	inch	cm	inch	cm	inch	cm	inch	cm	inch	cm	inch
Pattern:	64	24.96	85	33.29	53	20.8	71	27.74	26	10.4	35	13.87
Including Margins:	80	31	101	40	69	27	87	34	42	17	51	20
	25				26				27			
	Width		Height		Width		Height		Width		Height	
	cm	inch	cm	inch	cm	inch	cm	inch	cm	inch	cm	inch
Pattern:	25	9.98	34	13.31	24	9.6	32	12.8	23	9.24	31	12.33
Including Margins:	41	16	50	20	40	16	48	19	39	16	47	19
	28				30				32			
	Width		Height		Width		Height		Width		Height	
	cm	inch	cm	inch	cm	inch	cm	inch	cm	inch	cm	inch
Pattern:	23	8.91	30	11.89	21	8.32	28	11.09	20	7.8	26	10.4
Including Margins:	39	15	46	18	37	15	44	18	36	14	42	17

Solid Color Stitches. Use two strands of the specified color for these stitches.

Symbol	DMC	Name
○	224	Shell Pink-VY LT
■	310	Black
×	407	Desert Sand-DK
⬆	413	Pewter Gray -DK
◎	414	Steel Gray-DK
↑	415	Pearl Gray
⊖	452	Shell Gray-MD
—	453	Shell Gray-LT
*	522	Fern Green
⊗	523	Fern Green-LT
×	524	Fern Green-VY LT
▨	535	Ash Gray-VY LT
⊗	543	Beige Brown-UL VY LT
⊗	611	Drab Brown
⊗	612	Drab Brown-LT
⊗	640	Beige Gray-VY DK
⊕	642	Beige Gray-DK
■	645	Beaver Gray-VY DK
⊗	646	Beaver Gray-DK
◎	647	Beaver Gray-MD
✓	648	Beaver Gray-LT
△	712	Cream
⇄	738	Tan-VY LT
+	739	Tan-UL VY LT
«	746	Off White
♡	762	Pearl Gray-VY LT
○	775	Baby Blue-VY LT
⬆	839	Beige Brown-DK
⬆	841	Beige Brown-LT
⬇	844	Beaver Brown-UL DK

●	898	Coffee Brown-VY DK
♦♦	926	Gray Green-MD
⊖	927	Gray Green-LT
	928	Gray Green-VY LT
⊕	932	Antique Blue-LT
●	934	Black Avocado Green
⊗	936	Avocado Green-VY DK
●	938	Coffee Brown-UL DK
^	948	Peach-VY LT
✓	950	Desert Sand-LT
.	951	Tawny-LT
✕	3021	Brown Gray -VY DK
✕	3023	Brown Gray -LT
⊗	3024	Brown Gray -VY LT
⊗	3031	Mocha Brown-VY DK
⊗	3053	Green Gray
⊗	3072	Beaver Gray-VY LT
■	3371	Black Brown
⊗	3752	Antique Blue-VY LT
5	3753	Antique Blue-UL VY LT
∩	3756	Baby Blue-UL VY LT
⌒	3772	Desert Sand-VY DK
➔	3781	Mocha Brown-DK
◎	3782	Mocha Brown-LT
●	3787	Brown Gray -DK
◀	3790	Beige Gray-UL DK
◇	3841	Baby Blue-Pale
♠	3860	Cocoa
◀	3861	Cocoa-LT
⬆	3863	Mocha Beige-MD
1	3865	Winter White
l	3866	Mocha Brown-UL VY LT

Blend Stitches. Use one strand of each of DMC1 and DMC2 for these stitches.

Symbol	DMC1	Name1	DMC2	Name2
☉	414	Steel Gray-DK	927	Gray Green-LT
⌘	318	Steel Gray-LT	414	Steel Gray-DK
⌘	318	Steel Gray-LT	927	Gray Green-LT
↓	318	Steel Gray-LT	932	Antique Blue-LT
✱	610	Drab Brown-DK	839	Beige Brown-DK
⦿	3021	Brown Gray-VY DK	3031	Mocha Brown-VY DK
▲	844	Beaver Brown-UL DK	3787	Brown Gray-DK
✕	414	Steel Gray-DK	503	Blue Green-MD
✱	645	Beaver Gray-VY DK	646	Beaver Gray-DK
∞	3756	Baby Blue-UL VY LT	747	Sky Blue-VY LT
↓	844	Beaver Brown-UL DK	3799	Pewter Gray-VY DK
✱	413	Pewter Gray-DK	844	Beaver Brown-UL DK
✱	3787	Brown Gray-DK	3790	Beige Gray-UL DK
⦿	3860	Cocoa	645	Beaver Gray-VY DK
⦿	415	Pearl Gray	3752	Antique Blue-VY LT
⦿	317	Pewter Gray	926	Gray Green-MD
⦿	3861	Cocoa-LT	647	Beaver Gray-MD
⦿	934	Black Avocado Green	935	Avocado Green-DK
✱	646	Beaver Gray-DK	503	Blue Green-MD
▼	839	Beige Brown-DK	869	Hazelnut Brown-VY DK
↑	3021	Brown Gray-VY DK	3781	Mocha Brown-DK
✱	223	Shell Pink-LT	224	Shell Pink-VY LT
⦿	3790	Beige Gray-UL DK	524	Fern Green-VY LT
⦿	839	Beige Brown-DK	3772	Desert Sand-VY DK
⦿	415	Pearl Gray	932	Antique Blue-LT
⦿	932	Antique Blue-LT	3752	Antique Blue-VY LT
⦿	932	Antique Blue-LT	3753	Antique Blue-UL VY LT
⦿	3752	Antique Blue-VY LT	3841	Baby Blue-Pale
⦿	3865	Winter White	3756	Baby Blue-UL VY LT
⦿	747	Sky Blue-VY LT	762	Pearl Gray-VY LT
⦿	3841	Baby Blue-Pale	828	Blue-UL VY LT
⦿	415	Pearl Gray	3753	Antique Blue-UL VY LT
⦿	318	Steel Gray-LT	503	Blue Green-MD
⦿	414	Steel Gray-DK	646	Beaver Gray-DK
⦿	535	Ash Gray-VY LT	926	Gray Green-MD
⦿	646	Beaver Gray-DK	926	Gray Green-MD
⦿	3753	Antique Blue-UL VY LT	3756	Baby Blue-UL VY LT
⦿	762	Pearl Gray-VY LT	3756	Baby Blue-UL VY LT
⦿	535	Ash Gray-VY LT	3799	Pewter Gray-VY DK
⦿	645	Beaver Gray-VY DK	523	Fern Green-LT
⦿	738	Tan-VY LT	524	Fern Green-VY LT
⦿	535	Ash Gray-VY LT	3021	Brown Gray-VY DK
⦿	3790	Beige Gray-UL DK	3053	Green Gray
⦿	646	Beaver Gray-DK	647	Beaver Gray-MD
⦿	926	Gray Green-MD	645	Beaver Gray-VY DK
⦿	3860	Cocoa	839	Beige Brown-DK
⦿	223	Shell Pink-LT	3790	Beige Gray-UL DK
⦿	407	Desert Sand-DK	3782	Mocha Brown-LT
⦿	3021	Brown Gray-VY DK	3790	Beige Gray-UL DK
⦿	224	Shell Pink-VY LT	453	Shell Gray-LT
⦿	3790	Beige Gray-UL DK	3863	Mocha Beige-MD
⦿	223	Shell Pink-LT	841	Beige Brown-LT
⦿	646	Beaver Gray-DK	3860	Cocoa

Copyright (c) 2007-, Golden Kite (Golden K.)

Internet: www.goldenkite.com

e-mail: info@goldenkite.com

♠	223	Shell Pink-LT	452	Shell Gray-MD
♣	647	Beaver Gray-MD	3860	Cocoa
♠	948	Peach-VY LT	224	Shell Pink-VY LT
♠	452	Shell Gray-MD	3782	Mocha Brown-LT
♠	224	Shell Pink-VY LT	712	Cream
♠	224	Shell Pink-VY LT	407	Desert Sand-DK
♠	950	Desert Sand-LT	712	Cream
♠	611	Drab Brown	839	Beige Brown-DK
♠	3860	Cocoa	3861	Cocoa-LT
♠	3031	Mocha Brown-VY DK	844	Beaver Brown-UL DK
♠	3363	Pine Green-MD	3787	Brown Gray -DK
♠	3363	Pine Green-MD	646	Beaver Gray-DK
♠	535	Ash Gray -VY LT	935	Avocado Green-DK
♠	926	Gray Green-MD	844	Beaver Brown-UL DK
♠	948	Peach-VY LT	712	Cream
♠	407	Desert Sand-DK	738	Tan-VY LT
♠	453	Shell Gray-LT	3023	Brown Gray -LT
♠	3053	Green Gray	3863	Mocha Beige-MD
♠	3863	Mocha Beige-MD	3032	Mocha Brown-MD
♠	224	Shell Pink-VY LT	3782	Mocha Brown-LT
♠	645	Beaver Gray-VY DK	3363	Pine Green-MD
♠	844	Beaver Brown-UL DK	3363	Pine Green-MD
♠	301	Mahogany-MD	3772	Desert Sand-VY DK
♠	839	Beige Brown-DK	301	Mahogany-MD
♠	3031	Mocha Brown-VY DK	3781	Mocha Brown-DK
♠	318	Steel Gray-LT	3848	Teal Green-MD
♠	414	Steel Gray-DK	3848	Teal Green-MD
♠	926	Gray Green-MD	3848	Teal Green-MD
♠	844	Beaver Brown-UL DK	3847	Teal Green-DK
♠	3363	Pine Green-MD	3847	Teal Green-DK
♠	3847	Teal Green-DK	535	Ash Gray -VY LT
♠	3022	Brown Gray -MD	3787	Brown Gray -DK
♠	935	Avocado Green-DK	3799	Pewter Gray -VY DK
♠	3787	Brown Gray -DK	935	Avocado Green-DK
♠	645	Beaver Gray -VY DK	935	Avocado Green-DK
♠	3790	Beige Gray-UL DK	934	Black Avocado Green
♠	224	Shell Pink-VY LT	522	Fern Green
♠	453	Shell Gray-LT	522	Fern Green
♠	535	Ash Gray -VY LT	647	Beaver Gray-MD
♠	739	Tan-UL VY LT	3053	Green Gray
♠	3022	Brown Gray -MD	523	Fern Green-LT

This table specifies how much thread of each color is required to stitch this pattern. It is good to know that one complete DMC skein contains 313 inches (795 cm) thread.

DMC	Name	Usage (cm)	Usage (inch)	Usage (cm)	Usage (inch)	Usage (cm)	Usage (inch)
		14		16		18	
223	Shell Pink-LT	25	9	24	9	22	8
224	Shell Pink-VY LT	164	64	156	61	140	55
301	Mahogany-MD	3	1	3	1	2	1
310	Black	13	5	13	5	11	4
317	Pewter Gray	36	14	35	13	31	12
318	Steel Gray-LT	314	123	299	117	269	105
407	Desert Sand-DK	62	24	59	23	53	20
413	Pewter Gray -DK	128	50	122	48	110	43
414	Steel Gray-DK	373	146	355	139	320	125
415	Pearl Gray	946	372	901	354	811	319
452	Shell Gray-MD	115	45	110	43	99	38
453	Shell Gray-LT	162	63	154	60	139	54
503	Blue Green-MD	259	101	246	96	222	87
522	Fern Green	124	48	118	46	106	41
523	Fern Green-LT	69	27	66	25	59	23
524	Fern Green-VY LT	112	44	106	41	96	37
535	Ash Gray -VY LT	1246	490	1186	466	1068	420
543	Beige Brown-UL VY LT	40	15	38	14	34	13
610	Drab Brown-DK	33	12	31	12	28	11
611	Drab Brown	37	14	36	14	32	12
612	Drab Brown-LT	16	6	15	5	14	5
640	Beige Gray-VY DK	195	76	186	73	167	65
642	Beige Gray-DK	61	24	58	22	52	20
645	Beaver Gray-VY DK	1295	509	1234	485	1110	437
646	Beaver Gray-DK	821	323	782	307	704	277
647	Beaver Gray-MD	620	244	591	232	532	209
648	Beaver Gray-LT	43	16	41	16	37	14
712	Cream	59	23	57	22	51	20
738	Tan-VY LT	28	11	26	10	24	9
739	Tan-UL VY LT	13	5	12	4	11	4
746	Off White	15	5	14	5	13	5
747	Sky Blue-VY LT	142	55	136	53	122	48
762	Pearl Gray-VY LT	207	81	197	77	177	69
775	Baby Blue-VY LT	480	188	457	179	411	161
828	Blue-UL VY LT	117	46	112	44	101	39
839	Beige Brown-DK	217	85	206	81	186	73
841	Beige Brown-LT	205	80	195	76	176	69
844	Beaver Brown-UL DK	1159	456	1104	434	993	390
869	Hazelnut Brown-VY DK	8	3	8	3	7	2
898	Coffee Brown-VY DK	14	5	13	5	12	4
926	Gray Green-MD	981	386	935	368	841	331
927	Gray Green-LT	226	88	215	84	194	76
928	Gray Green-VY LT	42	16	40	15	36	14
932	Antique Blue-LT	1319	519	1256	494	1130	444
934	Black Avocado Green	377	148	359	141	323	127
935	Avocado Green-DK	757	298	721	283	649	255
936	Avocado Green-VY DK	2	1	2	1	2	1
938	Coffee Brown-UL DK	44	17	41	16	37	14
948	Peach-VY LT	21	8	20	7	18	7
950	Desert Sand-LT	30	11	29	11	26	10
951	Tawny -LT	1	1	1	1	1	1
3021	Brown Gray -VY DK	498	196	474	186	427	168
3022	Brown Gray -MD	134	52	128	50	115	45
3023	Brown Gray -LT	115	45	109	42	98	38

Copyright (c) 2007-, Golden Kite (Golden K.)

Internet: www.goldenkite.com

e-mail: info@goldenkite.com

3024	Brown Gray -VY LT	23	9	22	8	20	7
3031	Mocha Brown-VY DK	335	131	319	125	287	112
3032	Mocha Brown-MD	61	24	58	22	52	20
3053	Green Gray	81	31	77	30	69	27
3072	Beaver Gray-VY LT	31	12	29	11	26	10
3363	Pine Green-MD	229	90	218	85	196	77
3371	Black Brown	44	17	41	16	37	14
3752	Antique Blue-VY LT	1492	587	1421	559	1279	503
3753	Antique Blue-UL VY LT	2045	805	1947	766	1752	689
3756	Baby Blue-UL VY LT	331	130	315	124	284	111
3772	Desert Sand-VY DK	11	4	11	4	10	3
3781	Mocha Brown-DK	122	48	116	45	104	40
3782	Mocha Brown-LT	173	68	165	64	148	58
3787	Brown Gray -DK	1259	495	1199	472	1079	424
3790	Beige Gray-UL DK	662	260	631	248	567	223
3799	Pewter Gray -VY DK	488	192	464	182	418	164
3841	Baby Blue-Pale	643	253	612	240	551	216
3847	Teal Green-DK	10	3	9	3	8	3
3848	Teal Green-MD	25	9	23	9	21	8
3860	Cocoa	458	180	436	171	392	154
3861	Cocoa-LT	176	69	168	66	151	59
3863	Mocha Beige-MD	140	55	134	52	120	47
3865	Winter White	57	22	55	21	49	19
3866	Mocha Brown-UL VY LT	34	13	33	12	29	11

Extended thread usage table.							
DMC	Name	Usage (cm)	Usage (inch)	Usage (cm)	Usage (inch)	Usage (cm)	Usage (inch)
		10		12		24	
223	Shell Pink-LT	40	14	33	12	17	6
224	Shell Pink-VY LT	252	99	210	83	105	41
301	Mahogany-MD	4	2	3	2	2	1
310	Black	20	7	17	6	8	3
317	Pewter Gray	56	22	47	18	23	9
318	Steel Gray-LT	484	189	404	158	202	79
407	Desert Sand-DK	95	36	80	30	40	15
413	Pewter Gray -DK	198	77	165	65	83	32
414	Steel Gray-DK	576	225	480	188	240	94
415	Pearl Gray	1460	574	1217	479	608	239
452	Shell Gray-MD	178	68	149	57	74	29
453	Shell Gray-LT	250	97	209	81	104	41
503	Blue Green-MD	400	157	333	131	167	65
522	Fern Green	191	74	159	62	80	31
523	Fern Green-LT	106	41	89	35	44	17
524	Fern Green-VY LT	173	67	144	56	72	28
535	Ash Gray-VY LT	1922	756	1602	630	801	315
543	Beige Brown-UL VY LT	61	23	51	20	26	10
610	Drab Brown-DK	50	20	42	17	21	8
611	Drab Brown	58	22	48	18	24	9
612	Drab Brown-LT	25	9	21	8	11	4
640	Beige Gray-VY DK	301	117	251	98	125	49
642	Beige Gray-DK	94	36	78	30	39	15
645	Beaver Gray-VY DK	1998	787	1665	656	833	328
646	Beaver Gray-DK	1267	499	1056	416	528	208
647	Beaver Gray-MD	958	376	798	314	399	157
648	Beaver Gray-LT	67	25	56	21	28	11
712	Cream	92	36	77	30	38	15

738	Tan-VY LT	43	16	36	14	18	7
739	Tan-UL VY LT	20	7	17	6	8	3
746	Off White	23	9	20	8	10	4
747	Sky Blue-VY LT	220	86	183	72	92	36
762	Pearl Gray-VY LT	319	124	266	104	133	52
775	Baby Blue-VY LT	740	290	617	242	308	121
828	Blue-UL VY LT	182	70	152	59	76	29
839	Beige Brown-DK	335	131	279	110	140	55
841	Beige Brown-LT	317	124	264	104	132	52
844	Beaver Brown-UL DK	1787	702	1490	585	745	293
869	Hazelnut Brown-VY DK	13	4	11	3	5	2
898	Coffee Brown-VY DK	22	7	18	6	9	3
926	Gray Green-MD	1514	596	1262	497	631	248
927	Gray Green-LT	349	137	291	114	146	57
928	Gray Green-VY LT	65	25	54	21	27	11
932	Antique Blue-LT	2034	799	1695	666	848	333
934	Black Avocado Green	581	229	485	191	242	95
935	Avocado Green-DK	1168	459	974	383	487	191
936	Avocado Green-VY DK	4	2	3	2	2	1
938	Coffee Brown-UL DK	67	25	56	21	28	11
948	Peach-VY LT	32	13	27	11	14	5
950	Desert Sand-LT	47	18	39	15	20	8
951	Tawny -LT	2	2	2	2	1	1
3021	Brown Gray -VY DK	769	302	641	252	320	126
3022	Brown Gray -MD	207	81	173	68	86	34
3023	Brown Gray -LT	176	68	147	57	74	29
3024	Brown Gray -VY LT	36	13	30	11	15	5
3031	Mocha Brown-VY DK	517	202	431	168	215	84
3032	Mocha Brown-MD	94	36	78	30	39	15
3053	Green Gray	124	49	104	41	52	20
3072	Beaver Gray-VY LT	47	18	39	15	20	8
3363	Pine Green-MD	353	139	294	116	147	58
3371	Black Brown	67	25	56	21	28	11
3752	Antique Blue-VY LT	2302	905	1919	755	959	377
3753	Antique Blue-UL VY LT	3154	1240	2628	1034	1314	517
3756	Baby Blue-UL VY LT	511	200	426	167	213	83
3772	Desert Sand-VY DK	18	5	15	5	8	2
3781	Mocha Brown-DK	187	72	156	60	78	30
3782	Mocha Brown-LT	266	104	222	87	111	44
3787	Brown Gray -DK	1942	763	1619	636	809	318
3790	Beige Gray-UL DK	1021	401	851	335	425	167
3799	Pewter Gray -VY DK	752	295	627	246	314	123
3841	Baby Blue-Pale	992	389	827	324	413	162
3847	Teal Green-DK	14	5	12	5	6	2
3848	Teal Green-MD	38	14	32	12	16	6
3860	Cocoa	706	277	588	231	294	116
3861	Cocoa-LT	272	106	227	89	113	44
3863	Mocha Beige-MD	216	85	180	71	90	35
3865	Winter White	88	34	74	29	37	14
3866	Mocha Brown-UL VY LT	52	20	44	17	22	8

Extended thread usage table.

DMC	Name	Usage (cm)	Usage (inch)	Usage (cm)	Usage (inch)	Usage (cm)	Usage (inch)
		25		26		27	
223	Shell Pink-LT	16	6	15	6	15	5
224	Shell Pink-VY LT	101	40	97	38	93	37
301	Mahogany-MD	1	1	1	1	1	1
310	Black	8	3	8	3	7	3
317	Pewter Gray	22	9	21	8	21	8
318	Steel Gray-LT	194	76	186	73	179	70
407	Desert Sand-DK	38	14	37	14	35	13
413	Pewter Gray -DK	79	31	76	30	73	29
414	Steel Gray-DK	230	90	222	87	213	83
415	Pearl Gray	584	230	561	221	541	213
452	Shell Gray-MD	71	27	69	26	66	25
453	Shell Gray-LT	100	39	96	37	93	36
503	Blue Green-MD	160	63	154	60	148	58
522	Fern Green	76	30	73	28	71	27
523	Fern Green-LT	42	17	41	16	39	15
524	Fern Green-VY LT	69	27	66	26	64	25
535	Ash Gray-VY LT	769	302	739	291	712	280
543	Beige Brown-UL VY LT	24	9	24	9	23	9
610	Drab Brown-DK	20	8	19	8	19	7
611	Drab Brown	23	9	22	8	21	8
612	Drab Brown-LT	10	4	10	3	9	3
640	Beige Gray-VY DK	120	47	116	45	111	43
642	Beige Gray-DK	37	14	36	14	35	13
645	Beaver Gray-VY DK	799	315	768	303	740	291
646	Beaver Gray-DK	507	199	487	192	469	185
647	Beaver Gray-MD	383	150	368	145	355	139
648	Beaver Gray-LT	27	10	26	10	25	9
712	Cream	37	14	35	14	34	13
738	Tan-VY LT	17	6	17	6	16	6
739	Tan-UL VY LT	8	3	8	3	7	3
746	Off White	9	4	9	3	9	3
747	Sky Blue-VY LT	88	35	84	33	81	32
762	Pearl Gray-VY LT	127	50	123	48	118	46
775	Baby Blue-VY LT	296	116	285	111	274	107
828	Blue-UL VY LT	73	28	70	27	67	26
839	Beige Brown-DK	134	53	129	51	124	49
841	Beige Brown-LT	127	50	122	48	117	46
844	Beaver Brown-UL DK	715	281	687	270	662	260
869	Hazelnut Brown-VY DK	5	1	5	1	5	1
898	Coffee Brown-VY DK	9	3	8	3	8	3
926	Gray Green-MD	606	238	582	229	561	221
927	Gray Green-LT	140	55	134	53	129	51
928	Gray Green-VY LT	26	10	25	10	24	9
932	Antique Blue-LT	814	320	782	307	753	296
934	Black Avocado Green	233	91	224	88	215	85
935	Avocado Green-DK	467	184	449	177	433	170
936	Avocado Green-VY DK	1	1	1	1	1	1
938	Coffee Brown-UL DK	27	10	26	10	25	9
948	Peach-VY LT	13	5	12	5	12	5
950	Desert Sand-LT	19	7	18	7	17	7
951	Tawny -LT	1	1	1	1	1	1
3021	Brown Gray -VY DK	307	121	296	116	285	112
3022	Brown Gray -MD	83	32	80	31	77	30

3023	Brown Gray -LT	71	27	68	26	65	25
3024	Brown Gray -VY LT	14	5	14	5	13	5
3031	Mocha Brown-VY DK	207	81	199	78	191	75
3032	Mocha Brown-MD	37	14	36	14	35	13
3053	Green Gray	50	19	48	19	46	18
3072	Beaver Gray-VY LT	19	7	18	7	17	7
3363	Pine Green-MD	141	55	136	53	131	51
3371	Black Brown	27	10	26	10	25	9
3752	Antique Blue-VY LT	921	362	885	348	853	335
3753	Antique Blue-UL VY LT	1261	496	1213	477	1168	459
3756	Baby Blue-UL VY LT	204	80	197	77	189	74
3772	Desert Sand-VY DK	7	2	7	2	7	2
3781	Mocha Brown-DK	75	29	72	28	69	27
3782	Mocha Brown-LT	107	42	102	40	99	39
3787	Brown Gray -DK	777	305	747	294	719	283
3790	Beige Gray-UL DK	408	161	393	154	378	149
3799	Pewter Gray -VY DK	301	118	289	114	279	109
3841	Baby Blue-Pale	397	156	381	150	367	144
3847	Teal Green-DK	6	2	6	2	5	2
3848	Teal Green-MD	15	6	15	6	14	5
3860	Cocoa	282	111	271	107	261	103
3861	Cocoa-LT	109	42	105	41	101	39
3863	Mocha Beige-MD	86	34	83	33	80	31
3865	Winter White	35	14	34	13	33	13
3866	Mocha Brown-UL VY LT	21	8	20	8	19	7

Extended thread usage table.							
DMC	Name	Usage (cm)	Usage (inch)	Usage (cm)	Usage (inch)	Usage (cm)	Usage (inch)
		28		30		32	
223	Shell Pink-LT	14	5	13	5	12	5
224	Shell Pink-VY LT	90	35	84	33	79	31
301	Mahogany-MD	1	1	1	1	1	1
310	Black	7	3	7	2	6	2
317	Pewter Gray	20	8	19	7	17	7
318	Steel Gray-LT	173	68	161	63	151	59
407	Desert Sand-DK	34	13	32	12	30	11
413	Pewter Gray -DK	71	28	66	26	62	24
414	Steel Gray-DK	206	80	192	75	180	70
415	Pearl Gray	521	205	487	191	456	179
452	Shell Gray-MD	64	24	59	23	56	21
453	Shell Gray-LT	89	35	83	32	78	30
503	Blue Green-MD	143	56	133	52	125	49
522	Fern Green	68	26	64	25	60	23
523	Fern Green-LT	38	15	35	14	33	13
524	Fern Green-VY LT	62	24	58	22	54	21
535	Ash Gray -VY LT	687	270	641	252	601	236
543	Beige Brown-UL VY LT	22	8	20	8	19	7
610	Drab Brown-DK	18	7	17	7	16	6
611	Drab Brown	21	8	19	7	18	7
612	Drab Brown-LT	9	3	8	3	8	3
640	Beige Gray-VY DK	107	42	100	39	94	37
642	Beige Gray-DK	33	13	31	12	29	11
645	Beaver Gray-VY DK	714	281	666	262	624	246
646	Beaver Gray-DK	453	178	422	166	396	156
647	Beaver Gray-MD	342	134	319	125	299	118
648	Beaver Gray-LT	24	9	22	8	21	8
712	Cream	33	13	31	12	29	11

Copyright (c) 2007-, Golden Kite (Golden K.)

Internet: www.goldenkite.com

e-mail: info@goldenkite.com

738	Tan-VY LT	15	6	14	5	14	5
739	Tan-UL VY LT	7	3	7	2	6	2
746	Off White	8	3	8	3	7	3
747	Sky Blue-VY LT	78	31	73	29	69	27
762	Pearl Gray-VY LT	114	44	106	41	100	39
775	Baby Blue-VY LT	264	104	247	97	231	91
828	Blue-UL VY LT	65	25	61	23	57	22
839	Beige Brown-DK	120	47	112	44	105	41
841	Beige Brown-LT	113	44	106	41	99	39
844	Beaver Brown-UL DK	638	251	596	234	559	219
869	Hazelnut Brown-VY DK	5	1	4	1	4	1
898	Coffee Brown-VY DK	8	3	7	2	7	2
926	Gray Green-MD	541	213	505	199	473	186
927	Gray Green-LT	125	49	116	46	109	43
928	Gray Green-VY LT	23	9	22	8	20	8
932	Antique Blue-LT	726	285	678	266	636	250
934	Black Avocado Green	208	82	194	76	182	71
935	Avocado Green-DK	417	164	389	153	365	143
936	Avocado Green-VY DK	1	1	1	1	1	1
938	Coffee Brown-UL DK	24	9	22	8	21	8
948	Peach-VY LT	12	5	11	4	10	4
950	Desert Sand-LT	17	6	16	6	15	6
951	Tawny -LT	1	1	1	1	1	1
3021	Brown Gray -VY DK	275	108	256	101	240	95
3022	Brown Gray -MD	74	29	69	27	65	25
3023	Brown Gray -LT	63	24	59	23	55	21
3024	Brown Gray -VY LT	13	5	12	4	11	4
3031	Mocha Brown-VY DK	185	72	172	67	161	63
3032	Mocha Brown-MD	33	13	31	12	29	11
3053	Green Gray	44	17	41	16	39	15
3072	Beaver Gray-VY LT	17	6	16	6	15	6
3363	Pine Green-MD	126	50	118	46	110	43
3371	Black Brown	24	9	22	8	21	8
3752	Antique Blue-VY LT	822	323	767	302	719	283
3753	Antique Blue-UL VY LT	1126	443	1051	413	986	388
3756	Baby Blue-UL VY LT	183	71	170	67	160	62
3772	Desert Sand-VY DK	6	2	6	2	6	2
3781	Mocha Brown-DK	67	26	62	24	59	23
3782	Mocha Brown-LT	95	37	89	35	83	33
3787	Brown Gray -DK	694	273	647	254	607	239
3790	Beige Gray-UL DK	365	143	340	134	319	125
3799	Pewter Gray -VY DK	269	105	251	98	235	92
3841	Baby Blue-Pale	354	139	331	130	310	122
3847	Teal Green-DK	5	2	5	2	5	2
3848	Teal Green-MD	14	5	13	5	12	5
3860	Cocoa	252	99	235	92	221	87
3861	Cocoa-LT	97	38	91	35	85	33
3863	Mocha Beige-MD	77	30	72	28	68	26
3865	Winter White	32	12	29	11	28	11
3866	Mocha Brown-UL VY LT	19	7	17	7	16	6

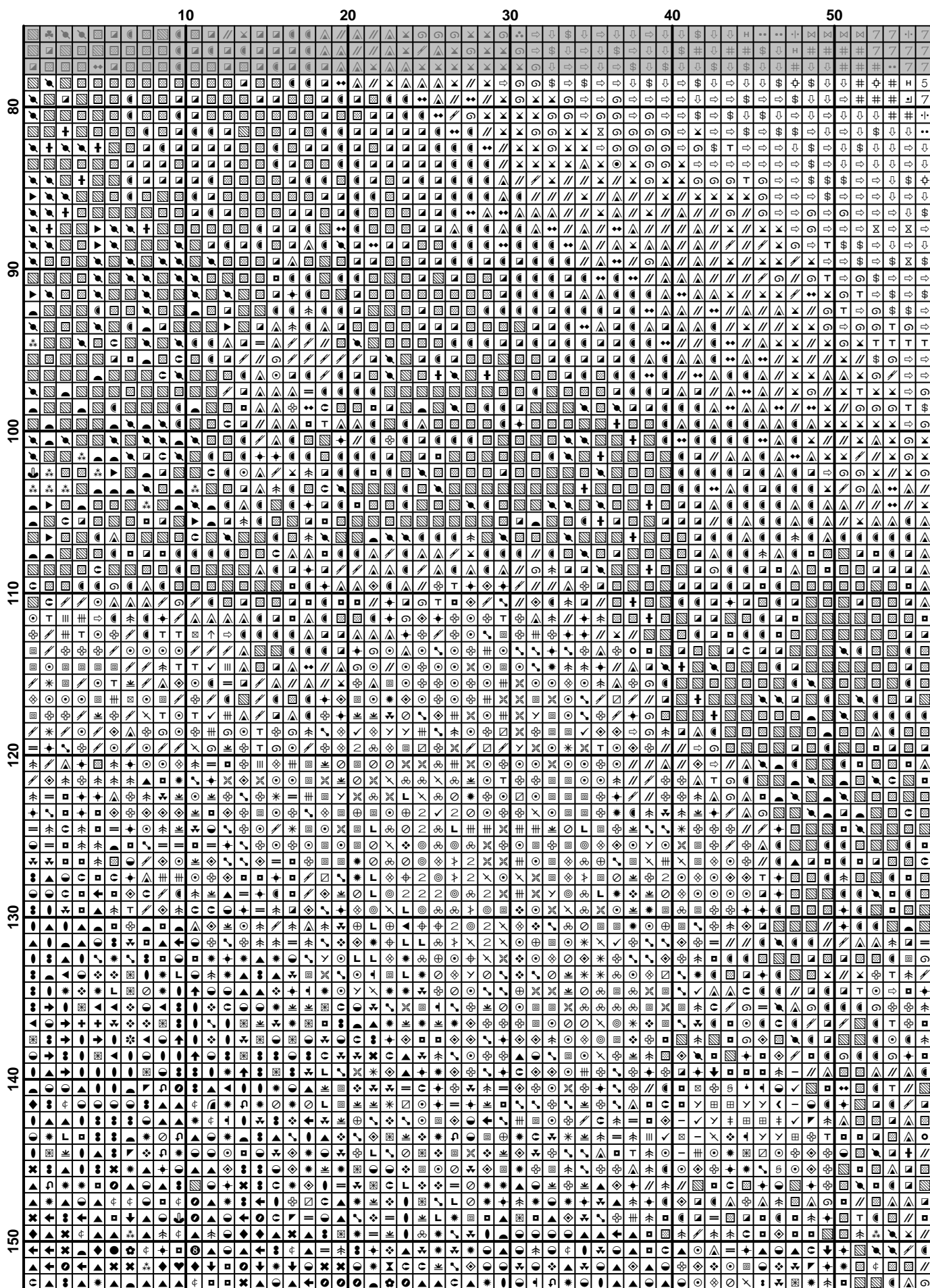
(7)

(8)

(9)

(10)

(10)



(13)

(14)

(15)

