



[www.goldenkite.com](http://www.goldenkite.com)

## 931 Ask Me No More



**This pattern may not be copied, sold or in any other way handled in any way that violates the international copyright laws. If you get hold of this pattern (and or this document) in any other way than via a direct download from [www.goldenkite.com](http://www.goldenkite.com) or via a mail from us, you should report that to us at [legal\\_actions@goldenkite.com](mailto:legal_actions@goldenkite.com) .**

Copyright ( c ) 2006-, Golden Kite. All rights reserved.

Copyright ( c ) 2006-, Golden Kite (Golden K.)  
Internet: [www.goldenkite.com](http://www.goldenkite.com)

e-mail: [info@goldenkite.com](mailto:info@goldenkite.com)

## Instructions

Thank you for choosing Golden Kite products!  
We hope you will have lots of fun with this cross-stitch pattern!

### Fabric

Press the fabric with an iron if needed. A good thing to prevent the fabric from fraying is to machine zigzag the edges.

On large patterns, it is easiest to start from the upper left corner of the design. Make sure you have the proper margins before starting and that the fabric piece is of the correct size. The best way to verify this is to count all stitch positions on the fabric from the upper left corner downwards and to the right to make sure there is enough space for the design.

Some prefer to start in the center of the design instead. To locate the center of the fabric, fold the fabric in half both vertically and horizontally. The center is located where these two folds meet.

### Stitches

Each length of DMC tread consists of six strands.  
Use two of these strands for all stitches.

Note that some colors may be mixes (or blends) between two different pure colors. In that case take one strand of the two colors each and thread the two strands into the needle at the same time for stitching.

All stitches are full cross-stitches. No half-stitching and no back-stitching is necessary in this pattern.

All cross-stitches will be worked into the holes in the fabric from left to right. Always use the larger holes in the fabric for the stitches. Adjacent stitches should meet in the same hole. Make sure all stitches cross in the same direction.

Please be careful when washing the finished embroidery! The cotton thread may bleed when washed. Only hand wash it in lukewarm water. Remove excess water by roll it in a towel and lay it flat to air dry. Natural fabrics may shrink slightly when washed. We do not recommend washing the embroidery if not absolutely necessary and we take no responsibility for any damage that may occur.

*When you start using this product you agree that Golden Kite (Golden K), or any people working for or in association with Golden Kite (Golden K), cannot be set responsible for any physical, mental, economical or other type of damage caused by this product (including this document, pattern, threads, needles and any other parts received by you from Golden Kite (Golden K)).*

**This pattern may not be copied, sold or in any other way handled in any way that violates the international copyright laws. If you get hold of this pattern (and or this document) in any other way than via a direct download from [www.goldenkite.com](http://www.goldenkite.com) or via a mail from us, you should report that to us at [legal\\_actions@goldenkite.com](mailto:legal_actions@goldenkite.com) .**

## Ask me no more

		Stitch Count				Recommended Fabric Color	
		Horizontal:	599			Antique White	
		Vertical:	406				

This table tells the size of the pattern (without any margins) and the size of the fabric required to stitch the pattern (including recommended margins). 3 inch margins have been added on each side in the 'Including Margins' row.

The sizes are given for 14, 16 and 18 stitches per inch fabrics.

Make sure to use the 'Including Margins' row when cutting the piece of fabric to be used. Also make sure that 3 inch margins are enough for your stitching technique and add more margin areas if necessary.

	14				16				18			
	Width		Height		Width		Height		Width		Height	
	cm	inch	cm	inch	cm	inch	cm	inch	cm	inch	cm	inch
Pattern:	109	42.75	74	28.92	95	37.4	65	25.31	85	33.25	58	22.5
Including Margins:	125	49	90	35	111	44	81	32	101	40	74	29
	10				12				24			
	Width		Height		Width		Height		Width		Height	
	cm	inch	cm	inch	cm	inch	cm	inch	cm	inch	cm	inch
Pattern:	152	59.85	103	40.48	127	49.87	86	33.74	63	24.93	43	16.87
Including Margins:	168	66	119	47	143	56	102	40	79	31	59	23
	25				26				27			
	Width		Height		Width		Height		Width		Height	
	cm	inch	cm	inch	cm	inch	cm	inch	cm	inch	cm	inch
Pattern:	61	23.94	41	16.19	58	23.01	39	15.57	56	22.16	38	14.99
Including Margins:	77	30	57	23	74	30	55	22	72	29	54	21
	28				30				32			
	Width		Height		Width		Height		Width		Height	
	cm	inch	cm	inch	cm	inch	cm	inch	cm	inch	cm	inch
Pattern:	54	21.37	37	14.46	50	19.95	34	13.49	47	18.7	32	12.65
Including Margins:	70	28	53	21	66	26	50	20	63	25	48	19

Solid Color Stitches. Use two strands of the specified color for these stitches.

Symbol	DMC	Name
⦿	225	Shell Pink-UL VY LT
⦿	315	Antique Mauve-VY DK
⦿	413	Pewter Gray-DK
≡	414	Steel Gray-DK
⦿	453	Shell Gray-LT
⦿	522	Fern Green
★	524	Fern Green-VY LT
×	535	Ash Gray-VY LT
⦿	543	Beige Brown-UL VY LT
⦿	598	Turquoise-LT
⦿	613	Drab Brown-VY LT
⦿	642	Beige Gray-DK
⦿	644	Beige Gray-MD
⦿	645	Beaver Gray-VY DK
⦿	646	Beaver Gray-DK
⦿	647	Beaver Gray-MD
⦿	648	Beaver Gray-LT
::	712	Cream
⦿	738	Tan-VY LT
2	739	Tan-UL VY LT
⦿	746	Off White
9	747	Sky Blue-VY LT
III	754	Peach-LT
⦿	758	Terra Cotta-VY LT
✓	762	Pearl Gray-VY LT
/	775	Baby Blue-VY LT
6	819	Baby Pink-LT
6	822	Beige Gray-LT
⦿	842	Beige Brown-VY LT
⦿	844	Beaver Brown-UL DK
⦿	927	Gray Green-LT
Z	928	Gray Green-VY LT

⦿	931	Antique Blue-MD
▲	932	Antique Blue-LT
♂	945	Tawny
⦿	950	Desert Sand-LT
5	951	Tawny-LT
=	964	Sea Green-LT
⦿	3024	Brown Gray-VY LT
⦿	3033	Mocha Brown-VY LT
▼	3041	Antique Violet-MD
⦿	3042	Antique Violet-LT
<	3072	Beaver Gray-VY LT
◀	3743	Antique Violet-VY LT
m	3752	Antique Blue-VY LT
L	3753	Antique Blue-UL VY LT
≡	3756	Baby Blue-UL VY LT
n	3761	Sky Blue-LT
⦿	3768	Gray Green-DK
△	3770	Tawny-VY LT
▷	3774	Desert Sand-VY LT
⦿	3778	Terra Cotta-LT
⦿	3779	Terra Cotta-UL VY LT
■	3799	Pewter Gray-VY DK
⦿	3802	Antique Mauve-VY DK
↓	3803	Mauve-MD
e	3809	Turquoise-VY DK
⦿	3810	Turquoise-DK
(	3823	Yellow-UL Pale
⦿	3846	Bright Turquoise-LT
⦿	3848	Teal Green-MD
⦿	3859	Rosewood-LT
⦿	3860	Cocoa
♦	3864	Mocha Beige-LT
∞	3865	Winter White
√	3866	Mocha Brown-UL VY LT

Blend Stitches. Use one strand of each of DMC1 and DMC2 for these stitches.

Symbol	DMC1	Name1	DMC2	Name2
⊕	648	Beaver Gray-LT	452	Shell Gray-MD
◦	927	Gray Green-LT	931	Antique Blue-MD
↑	535	Ash Gray-VY LT	645	Beaver Gray-VY DK
▲	645	Beaver Gray-VY DK	646	Beaver Gray-DK
♥	844	Beaver Brown-UL DK	3740	Antique Violet-DK
⚡	738	Tan-VY LT	3864	Mocha Beige-LT
↓	738	Tan-VY LT	945	Tawny
..	738	Tan-VY LT	945	Tawny
☐	3772	Desert Sand-VY DK	642	Beige Gray-DK
⊕	3032	Mocha Brown-MD	3726	Antique Mauve-DK
↓	3726	Antique Mauve-DK	315	Antique Mauve-VY DK
◊	3756	Baby Blue-UL VY LT	3865	Winter White
▲	414	Steel Gray-DK	927	Gray Green-LT
↑	3743	Antique Violet-VY LT	3753	Antique Blue-UL VY LT
↓	927	Gray Green-LT	928	Gray Green-VY LT
◊	3849	Teal Green-LT	931	Antique Blue-MD
☐	931	Antique Blue-MD	414	Steel Gray-DK
△	369	Pistachio Green-VY LT	3024	Brown Gray-VY LT
▼	3849	Teal Green-LT	932	Antique Blue-LT
7	955	Nile Green-LT	3024	Brown Gray-VY LT
☐	3845	Bright Turquoise-MD	3846	Bright Turquoise-LT
⌘	807	Peacock Blue	3845	Bright Turquoise-MD
□	807	Peacock Blue	3766	Peacock Blue-LT
☐	3766	Peacock Blue-LT	519	Sky Blue
↖	519	Sky Blue	807	Peacock Blue
✕	519	Sky Blue	3846	Bright Turquoise-LT
◁	3752	Antique Blue-VY LT	3811	Turquoise-VY LT
**	519	Sky Blue	3845	Bright Turquoise-MD
❖	3846	Bright Turquoise-LT	827	Blue-VY LT
▽	827	Blue-VY LT	3811	Turquoise-VY LT
↖	415	Pearl Gray	598	Turquoise-LT
□	519	Sky Blue	964	Sea Green-LT
⌘	932	Antique Blue-LT	598	Turquoise-LT
◊	3761	Sky Blue-LT	827	Blue-VY LT
⌘	3846	Bright Turquoise-LT	3761	Sky Blue-LT
1	828	Blue-UL VY LT	762	Pearl Gray-VY LT
1	827	Blue-VY LT	828	Blue-UL VY LT
↗	3761	Sky Blue-LT	519	Sky Blue
↘	747	Sky Blue-VY LT	3761	Sky Blue-LT
α	775	Baby Blue-VY LT	747	Sky Blue-VY LT
?	762	Pearl Gray-VY LT	3756	Baby Blue-UL VY LT
◊	747	Sky Blue-VY LT	3846	Bright Turquoise-LT
◊	827	Blue-VY LT	747	Sky Blue-VY LT
■	317	Pewter Gray	502	Blue Green
◆	3809	Turquoise-VY DK	3847	Teal Green-DK
❖	807	Peacock Blue	3810	Turquoise-DK
▲	932	Antique Blue-LT	807	Peacock Blue
⊕	762	Pearl Gray-VY LT	415	Pearl Gray
	932	Antique Blue-LT	415	Pearl Gray
*	931	Antique Blue-MD	932	Antique Blue-LT
⌘	414	Steel Gray-DK	932	Antique Blue-LT
⊕	992	Aquamarine-MD	927	Gray Green-LT
◊	3752	Antique Blue-VY LT	932	Antique Blue-LT

⌘	598	Turquoise-LT	3766	Peacock Blue-LT
:	951	Tawny -LT	3774	Desert Sand-VY LT
✱	407	Desert Sand-DK	3864	Mocha Beige-LT
↶	950	Desert Sand-LT	739	Tan-UL VY LT
#	3032	Mocha Brown-MD	3861	Cocoa-LT
●	3859	Rosewood-LT	3032	Mocha Brown-MD
▲	3726	Antique Mauve-DK	3772	Desert Sand-VY DK
✕	3859	Rosewood-LT	3772	Desert Sand-VY DK
♣	3726	Antique Mauve-DK	3860	Cocoa
⊕	3032	Mocha Brown-MD	3860	Cocoa
☉	3859	Rosewood-LT	3860	Cocoa
\$	3859	Rosewood-LT	3864	Mocha Beige-LT
田	3772	Desert Sand-VY DK	407	Desert Sand-DK
●	535	Ash Gray -VY LT	3799	Pewter Gray -VY DK
■	934	Black Avocado Green	3799	Pewter Gray -VY DK
●	838	Beige Brown-VY DK	3802	Antique Mauve-VY DK
✕	3721	Shell Pink- DK	3722	Shell Pink- MD
⌘	3859	Rosewood-LT	356	Terra Cotta-MD
H	3859	Rosewood-LT	3722	Shell Pink- MD
●	3722	Shell Pink- MD	3772	Desert Sand-VY DK
➤	3722	Shell Pink- MD	315	Antique Mauve-VY DK
♠	356	Terra Cotta-MD	3778	Terra Cotta-LT
◀	3760	Wedgewood-MD	3845	Bright Turquoise-MD
«	3848	Teal Green-MD	3760	Wedgewood-MD
↖	3848	Teal Green-MD	3810	Turquoise-DK
+	3809	Turquoise-VY DK	3810	Turquoise-DK
←	317	Pewter Gray	3809	Turquoise-VY DK
I	317	Pewter Gray	3810	Turquoise-DK
⋮	3810	Turquoise-DK	3768	Gray Green-DK
×	224	Shell Pink-VY LT	3864	Mocha Beige-LT
☾	3778	Terra Cotta-LT	437	Tan-LT
✕	407	Desert Sand-DK	3778	Terra Cotta-LT
∩	437	Tan-LT	760	Salmon
⊗	224	Shell Pink-VY LT	950	Desert Sand-LT
⊗	758	Terra Cotta-VY LT	3864	Mocha Beige-LT
↶	754	Peach-LT	951	Tawny -LT
4	758	Terra Cotta-VY LT	3856	Mahogany-UL VY LT
✱	760	Salmon	3778	Terra Cotta-LT
☼	3354	Dusty Rose-LT	754	Peach-LT
↑	945	Tawny	3779	Terra Cotta-UL VY LT
//	951	Tawny -LT	3354	Dusty Rose-LT
3	754	Peach-LT	948	Peach-VY LT
⊕	3864	Mocha Beige-LT	3772	Desert Sand-VY DK
▶	3772	Desert Sand-VY DK	356	Terra Cotta-MD
♡	3865	Winter White	819	Baby Pink-LT
)	ecru	Ecru	948	Peach-VY LT
⊗	951	Tawny -LT	3770	Tawny -VY LT
^	951	Tawny -LT	819	Baby Pink-LT
~	822	Beige Gray-LT	948	Peach-VY LT
⇒	453	Shell Gray-LT	543	Beige Brown-UL VY LT
I	739	Tan-UL VY LT	945	Tawny
0	3072	Beaver Gray-VY LT	3024	Brown Gray -VY LT
♠	3024	Brown Gray -VY LT	648	Beaver Gray-LT
¼	648	Beaver Gray-LT	369	Pistachio Green-VY LT
•	369	Pistachio Green-VY LT	524	Fern Green-VY LT
^	955	Nile Green-LT	928	Gray Green-VY LT
⊗	955	Nile Green-LT	415	Pearl Gray
↶	415	Pearl Gray	928	Gray Green-VY LT
±	647	Beaver Gray-MD	524	Fern Green-VY LT

Copyright ( c ) 2006-, Golden Kite (Golden K.)

Internet: [www.goldenkite.com](http://www.goldenkite.com)

e-mail: [info@goldenkite.com](mailto:info@goldenkite.com)

+	928	Gray Green-VY LT	369	Pistachio Green-VY LT
▨	3809	Turquoise-VY DK	3848	Teal Green-MD
Ⓢ	3778	Terra Cotta-LT	3779	Terra Cotta-UL VY LT
L	503	Blue Green-MD	524	Fern Green-VY LT
•	822	Beige Gray-LT	3770	Tawny -VY LT
III	642	Beige Gray-DK	3864	Mocha Beige-LT
➔	317	Pewter Gray	3768	Gray Green-DK
‡	3809	Turquoise-VY DK	3768	Gray Green-DK
☆	3756	Baby Blue-UL VY LT	712	Cream
—	613	Drab Brown-VY LT	739	Tan-UL VY LT
◇	712	Cream	762	Pearl Gray-VY LT
T	3024	Brown Gray -VY LT	524	Fern Green-VY LT
‡	927	Gray Green-LT	955	Nile Green-LT
c	3770	Tawny -VY LT	746	Off White
∴	842	Beige Brown-VY LT	738	Tan-VY LT
>	948	Peach-VY LT	951	Tawny -LT
*	648	Beaver Gray-LT	524	Fern Green-VY LT
▀	522	Fern Green	414	Steel Gray-DK
✕	844	Beaver Brown-UL DK	3860	Cocoa
⊙	3752	Antique Blue-VY LT	3753	Antique Blue-UL VY LT
u	3753	Antique Blue-UL VY LT	3072	Beaver Gray-VY LT
o	3866	Mocha Brown-UL VY LT	762	Pearl Gray-VY LT

This table specifies how much thread of each color is required to stitch this pattern. It is good to know that one complete DMC skein contains 313 inches (795 cm) thread.

DMC	Name	Usage (cm)	Usage (inch)	Usage (cm)	Usage (inch)	Usage (cm)	Usage (inch)
		14		16		18	
224	Shell Pink-VY LT	83	32	79	31	71	27
225	Shell Pink-UL VY LT	101	39	96	37	86	33
315	Antique Mauve-VY DK	78	30	74	29	67	26
317	Pewter Gray	409	161	390	153	351	138
356	Terra Cotta-MD	46	18	44	17	40	15
369	Pistachio Green-VY LT	366	144	349	137	314	123
407	Desert Sand-DK	108	42	103	40	93	36
413	Pewter Gray -DK	130	51	124	48	112	44
414	Steel Gray -DK	362	142	345	135	310	122
415	Pearl Gray	946	372	901	354	811	319
437	Tan-LT	35	13	33	12	30	11
452	Shell Gray-MD	72	28	68	26	62	24
453	Shell Gray-LT	368	144	351	138	316	124
502	Blue Green	75	29	72	28	64	25
503	Blue Green-MD	68	26	64	25	58	22
519	Sky Blue	2093	824	1993	784	1794	706
522	Fern Green	141	55	134	52	121	47
524	Fern Green-VY LT	819	322	780	307	702	276
535	Ash Gray -VY LT	356	140	339	133	305	120
543	Beige Brown-UL VY LT	538	211	512	201	461	181
598	Turquoise-LT	1049	412	999	393	899	353
613	Drab Brown-VY LT	247	97	235	92	212	83
642	Beige Gray-DK	192	75	183	72	165	64
644	Beige Gray-MD	196	77	187	73	168	66
645	Beaver Gray-VY DK	305	120	290	114	261	102
646	Beaver Gray-DK	188	74	179	70	161	63
647	Beaver Gray-MD	333	131	317	124	285	112
648	Beaver Gray-LT	698	274	665	261	598	235
712	Cream	3058	1203	2913	1146	2621	1031
738	Tan-VY LT	227	89	216	85	194	76
739	Tan-UL VY LT	450	177	429	168	386	151
746	Off White	577	227	550	216	495	194
747	Sky Blue-VY LT	2040	803	1943	764	1748	688
754	Peach-LT	114	44	109	42	98	38
758	Terra Cotta-VY LT	82	32	78	30	70	27
760	Salmon	17	6	16	6	15	5
762	Pearl Gray-VY LT	5145	2025	4900	1929	4410	1736
775	Baby Blue-VY LT	847	333	807	317	726	285
807	Peacock Blue	347	136	330	129	297	116
819	Baby Pink-LT	702	276	668	262	601	236
822	Beige Gray-LT	1527	601	1454	572	1309	515
827	Blue-VY LT	1163	457	1108	436	997	392
828	Blue-UL VY LT	649	255	618	243	556	218
838	Beige Brown-VY DK	19	7	18	7	17	6
842	Beige Brown-VY LT	301	118	287	112	258	101
844	Beaver Brown-UL DK	209	82	199	78	179	70
927	Gray Green-LT	1033	406	984	387	886	348
928	Gray Green-VY LT	979	385	933	367	839	330
931	Antique Blue-MD	459	180	437	172	393	154
932	Antique Blue-LT	1714	674	1633	642	1469	578
934	Black Avocado Green	148	58	141	55	127	50
945	Tawny	139	54	132	51	119	46
948	Peach-VY LT	714	281	680	267	612	240
950	Desert Sand-LT	197	77	187	73	168	66

Copyright (c) 2006-, Golden Kite (Golden K.)

Internet: [www.goldenkite.com](http://www.goldenkite.com)

e-mail: [info@goldenkite.com](mailto:info@goldenkite.com)



951	Tawny-LT	668	262	636	250	572	225
955	Nile Green-LT	965	379	919	361	827	325
964	Sea Green-LT	804	316	766	301	689	271
992	Aquamarine-MD	38	14	36	14	32	12
3024	Brown Gray-VY LT	1503	591	1432	563	1288	507
3032	Mocha Brown-MD	154	60	147	57	132	51
3033	Mocha Brown-VY LT	165	64	158	62	142	55
3041	Antique Violet-MD	60	23	58	22	52	20
3042	Antique Violet-LT	54	21	51	20	46	18
3072	Beaver Gray-VY LT	2529	995	2409	948	2168	853
3354	Dusty Rose-LT	15	5	15	5	13	5
3721	Shell Pink-DK	3	1	2	1	2	1
3722	Shell Pink-MD	68	26	65	25	58	22
3726	Antique Mauve-DK	113	44	108	42	97	38
3740	Antique Violet-DK	46	18	44	17	39	15
3743	Antique Violet-VY LT	83	32	79	31	71	27
3752	Antique Blue-VY LT	986	388	939	369	845	332
3753	Antique Blue-UL VY LT	1662	654	1583	623	1425	561
3756	Baby Blue-UL VY LT	4093	1611	3898	1534	3508	1381
3760	Wedgewood-MD	97	38	92	36	83	32
3761	Sky Blue-LT	2553	1005	2431	957	2188	861
3766	Peacock Blue-LT	474	186	451	177	406	159
3768	Gray Green-DK	362	142	345	135	310	122
3770	Tawny-VY LT	1144	450	1090	429	981	386
3772	Desert Sand-VY DK	256	100	244	96	219	86
3774	Desert Sand-VY LT	400	157	381	150	343	135
3778	Terra Cotta-LT	79	31	75	29	68	26
3779	Terra Cotta-UL VY LT	34	13	32	12	29	11
3799	Pewter Gray-VY DK	327	128	311	122	280	110
3802	Antique Mauve-VY DK	48	18	46	18	41	16
3803	Mauve-MD	11	4	11	4	10	3
3809	Turquoise-VY DK	714	281	680	267	612	240
3810	Turquoise-DK	750	295	715	281	643	253
3811	Turquoise-VY LT	523	205	498	196	448	176
3823	Yellow-UL Pale	84	33	80	31	72	28
3845	Bright Turquoise-MD	317	124	302	118	272	107
3846	Bright Turquoise-LT	3255	1281	3100	1220	2790	1098
3847	Teal Green-DK	59	23	56	22	51	20
3848	Teal Green-MD	410	161	391	153	352	138
3849	Teal Green-LT	295	116	281	110	253	99
3856	Mahogany-UL VY LT	14	5	13	5	12	4
3859	Rosewood-LT	261	102	248	97	223	87
3860	Cocoa	225	88	214	84	193	75
3861	Cocoa-LT	64	25	61	24	55	21
3864	Mocha Beige-LT	540	212	514	202	463	182
3865	Winter White	4914	1934	4680	1842	4212	1658
3866	Mocha Brown-UL VY LT	2811	1106	2677	1053	2409	948
ecru	Ecru	291	114	277	109	249	98

Extended thread usage table.							
DMC	Name	Usage (cm)	Usage (inch)	Usage (cm)	Usage (inch)	Usage (cm)	Usage (inch)
		10		12		24	
224	Shell Pink-VY LT	128	49	107	41	53	20
225	Shell Pink-UL VY LT	155	59	129	50	65	25
315	Antique Mauve-VY DK	121	47	101	39	50	20
317	Pewter Gray	632	248	527	207	263	104

356	Terra Cotta-MD	72	27	60	23	30	11
369	Pistachio Green-VY LT	565	221	471	185	236	92
407	Desert Sand-DK	167	65	140	54	70	27
413	Pewter Gray -DK	202	79	168	66	84	33
414	Steel Gray-DK	558	220	465	183	233	92
415	Pearl Gray	1460	574	1217	479	608	239
437	Tan-LT	54	20	45	17	23	8
452	Shell Gray-MD	112	43	93	36	47	18
453	Shell Gray-LT	569	223	474	186	237	93
502	Blue Green	115	45	96	38	48	19
503	Blue Green-MD	104	40	87	33	44	17
519	Sky Blue	3229	1271	2691	1059	1346	530
522	Fern Green	218	85	182	71	91	35
524	Fern Green-VY LT	1264	497	1053	414	527	207
535	Ash Gray -VY LT	549	216	458	180	229	90
543	Beige Brown-UL VY LT	830	326	692	272	346	136
598	Turquoise-LT	1618	635	1349	530	674	265
613	Drab Brown-VY LT	382	149	318	125	159	62
642	Beige Gray-DK	297	115	248	96	124	48
644	Beige Gray-MD	302	119	252	99	126	50
645	Beaver Gray-VY DK	470	184	392	153	196	77
646	Beaver Gray-DK	290	113	242	95	121	47
647	Beaver Gray-MD	513	202	428	168	214	84
648	Beaver Gray-LT	1076	423	897	353	449	176
712	Cream	4718	1856	3932	1547	1966	773
738	Tan-VY LT	349	137	291	114	146	57
739	Tan-UL VY LT	695	272	579	227	290	113
746	Off White	891	349	743	291	371	146
747	Sky Blue-VY LT	3146	1238	2622	1032	1311	516
754	Peach-LT	176	68	147	57	74	29
758	Terra Cotta-VY LT	126	49	105	41	53	20
760	Salmon	27	9	23	8	11	4
762	Pearl Gray-VY LT	7938	3125	6615	2604	3308	1302
775	Baby Blue-VY LT	1307	513	1089	428	545	214
807	Peacock Blue	535	209	446	174	223	87
819	Baby Pink-LT	1082	425	902	354	451	177
822	Beige Gray-LT	2356	927	1964	773	982	386
827	Blue-VY LT	1795	706	1496	588	748	294
828	Blue-UL VY LT	1001	392	834	327	417	164
838	Beige Brown-VY DK	31	11	26	9	13	5
842	Beige Brown-VY LT	464	182	387	152	194	76
844	Beaver Brown-UL DK	322	126	269	105	134	53
927	Gray Green-LT	1595	626	1329	522	665	261
928	Gray Green-VY LT	1510	594	1259	495	629	248
931	Antique Blue-MD	707	277	590	231	295	116
932	Antique Blue-LT	2644	1040	2204	867	1102	434
934	Black Avocado Green	229	90	191	75	95	38
945	Tawny	214	83	179	69	89	35
948	Peach-VY LT	1102	432	918	360	459	180
950	Desert Sand-LT	302	119	252	99	126	50
951	Tawny-LT	1030	405	858	338	429	169
955	Nile Green-LT	1489	585	1241	488	620	244
964	Sea Green-LT	1240	488	1034	407	517	203
992	Aquamarine-MD	58	22	48	18	24	9
3024	Brown Gray -VY LT	2318	913	1932	761	966	380
3032	Mocha Brown-MD	238	92	198	77	99	38
3033	Mocha Brown-VY LT	256	99	213	83	107	41
3041	Antique Violet-MD	94	36	78	30	39	15
3042	Antique Violet-LT	83	32	69	27	35	14

Copyright (c) 2006-, Golden Kite (Golden K.)

Internet: [www.goldenkite.com](http://www.goldenkite.com)

e-mail: [info@goldenkite.com](mailto:info@goldenkite.com)

3072	Beaver Gray-VY LT	3902	1535	3252	1280	1626	640
3354	Dusty Rose-LT	23	9	20	8	10	4
3721	Shell Pink-DK	4	2	3	2	2	1
3722	Shell Pink-MD	104	40	87	33	44	17
3726	Antique Mauve-DK	175	68	146	57	73	29
3740	Antique Violet-DK	70	27	59	23	29	11
3743	Antique Violet-VY LT	128	49	107	41	53	20
3752	Antique Blue-VY LT	1521	598	1268	498	634	249
3753	Antique Blue-UL VY LT	2565	1010	2138	842	1069	421
3756	Baby Blue-UL VY LT	6314	2486	5262	2072	2631	1036
3760	Wedgewood-MD	149	58	125	48	62	24
3761	Sky Blue-LT	3938	1550	3282	1292	1641	646
3766	Peacock Blue-LT	731	286	609	239	305	119
3768	Gray Green-DK	558	220	465	183	233	92
3770	Tawny-VY LT	1766	695	1472	579	736	290
3772	Desert Sand-VY DK	394	155	329	129	164	65
3774	Desert Sand-VY LT	617	243	515	203	257	101
3778	Terra Cotta-LT	122	47	102	39	51	20
3779	Terra Cotta-UL VY LT	52	20	44	17	22	8
3799	Pewter Gray-VY DK	504	198	420	165	210	83
3802	Antique Mauve-VY DK	74	29	62	24	31	12
3803	Mauve-MD	18	5	15	5	8	2
3809	Turquoise-VY DK	1102	432	918	360	459	180
3810	Turquoise-DK	1157	455	965	380	482	190
3811	Turquoise-VY LT	806	317	672	264	336	132
3823	Yellow-UL Pale	130	50	108	42	54	21
3845	Bright Turquoise-MD	490	193	408	161	204	80
3846	Bright Turquoise-LT	5022	1976	4185	1647	2093	824
3847	Teal Green-DK	92	36	77	30	38	15
3848	Teal Green-MD	634	248	528	207	264	104
3849	Teal Green-LT	455	178	380	149	190	74
3856	Mahogany-UL VY LT	22	7	18	6	9	3
3859	Rosewood-LT	401	157	335	131	167	65
3860	Cocoa	347	135	290	113	145	56
3861	Cocoa-LT	99	38	83	32	41	16
3864	Mocha Beige-LT	833	328	695	273	347	137
3865	Winter White	7582	2984	6318	2487	3159	1244
3866	Mocha Brown-UL VY LT	4336	1706	3614	1422	1807	711
ecru	Ecru	448	176	374	147	187	74

Extended thread usage table.							
DMC	Name	Usage (cm)	Usage (inch)	Usage (cm)	Usage (inch)	Usage (cm)	Usage (inch)
		25		26		27	
224	Shell Pink-VY LT	51	19	49	19	47	18
225	Shell Pink-UL VY LT	62	24	60	23	57	22
315	Antique Mauve-VY DK	48	19	46	18	45	17
317	Pewter Gray	253	99	243	96	234	92
356	Terra Cotta-MD	29	11	28	10	27	10
369	Pistachio Green-VY LT	226	89	217	85	209	82
407	Desert Sand-DK	67	26	64	25	62	24
413	Pewter Gray -DK	81	32	78	30	75	29
414	Steel Gray-DK	223	88	215	84	207	81
415	Pearl Gray	584	230	561	221	541	213
437	Tan-LT	22	8	21	8	20	7
452	Shell Gray-MD	45	17	43	17	41	16
453	Shell Gray-LT	228	89	219	86	211	83

502	Blue Green	46	18	44	17	43	17
503	Blue Green-MD	42	16	40	15	39	15
519	Sky Blue	1292	508	1242	489	1196	471
522	Fern Green	87	34	84	33	81	31
524	Fern Green-VY LT	505	199	486	191	468	184
535	Ash Gray-VY LT	220	86	211	83	203	80
543	Beige Brown-UL VY LT	332	130	319	125	307	121
598	Turquoise-LT	647	254	622	244	599	235
613	Drab Brown-VY LT	153	60	147	57	141	55
642	Beige Gray-DK	119	46	114	44	110	43
644	Beige Gray-MD	121	48	116	46	112	44
645	Beaver Gray-VY DK	188	73	181	71	174	68
646	Beaver Gray-DK	116	45	111	44	107	42
647	Beaver Gray-MD	205	81	197	78	190	75
648	Beaver Gray-LT	431	169	414	163	399	157
712	Cream	1887	742	1815	714	1747	687
738	Tan-VY LT	140	55	134	53	129	51
739	Tan-UL VY LT	278	109	267	105	257	101
746	Off White	356	140	343	134	330	129
747	Sky Blue-VY LT	1259	495	1210	476	1165	459
754	Peach-LT	71	27	68	26	65	25
758	Terra Cotta-VY LT	50	19	48	19	47	18
760	Salmon	11	4	10	3	10	3
762	Pearl Gray-VY LT	3175	1250	3053	1202	2940	1157
775	Baby Blue-VY LT	523	205	503	197	484	190
807	Peacock Blue	214	84	206	80	198	77
819	Baby Pink-LT	433	170	416	163	401	157
822	Beige Gray-LT	942	371	906	357	873	343
827	Blue-VY LT	718	282	690	271	665	261
828	Blue-UL VY LT	400	157	385	151	371	145
838	Beige Brown-VY DK	12	4	12	4	11	4
842	Beige Brown-VY LT	186	73	179	70	172	67
844	Beaver Brown-UL DK	129	50	124	48	119	47
927	Gray Green-LT	638	251	613	241	591	232
928	Gray Green-VY LT	604	238	581	228	559	220
931	Antique Blue-MD	283	111	272	107	262	103
932	Antique Blue-LT	1058	416	1017	400	979	385
934	Black Avocado Green	91	36	88	35	85	33
945	Tawny	86	33	82	32	79	31
948	Peach-VY LT	441	173	424	166	408	160
950	Desert Sand-LT	121	48	116	46	112	44
951	Tawny-LT	412	162	396	156	381	150
955	Nile Green-LT	595	234	573	225	551	217
964	Sea Green-LT	496	195	477	188	459	181
992	Aquamarine-MD	23	9	22	8	21	8
3024	Brown Gray-VY LT	927	365	892	351	859	338
3032	Mocha Brown-MD	95	37	91	35	88	34
3033	Mocha Brown-VY LT	102	40	98	38	95	37
3041	Antique Violet-MD	37	14	36	14	35	13
3042	Antique Violet-LT	33	13	32	12	31	12
3072	Beaver Gray-VY LT	1561	614	1501	591	1445	569
3354	Dusty Rose-LT	9	4	9	3	9	3
3721	Shell Pink-DK	1	1	1	1	1	1
3722	Shell Pink-MD	42	16	40	15	39	15
3726	Antique Mauve-DK	70	27	67	26	65	25
3740	Antique Violet-DK	28	11	27	10	26	10
3743	Antique Violet-VY LT	51	19	49	19	47	18
3752	Antique Blue-VY LT	608	239	585	230	563	221
3753	Antique Blue-UL VY LT	1026	404	987	388	950	374

Copyright (c) 2006-, Golden Kite (Golden K.)

Internet: [www.goldenkite.com](http://www.goldenkite.com)

e-mail: [info@goldenkite.com](mailto:info@goldenkite.com)

3756	Baby Blue-UL VY LT	2526	994	2429	956	2339	921
3760	Wedgewood-MD	60	23	57	22	55	21
3761	Sky Blue-LT	1575	620	1515	596	1459	574
3766	Peacock Blue-LT	292	114	281	110	271	106
3768	Gray Green-DK	223	88	215	84	207	81
3770	Tawny-VY LT	706	278	679	267	654	257
3772	Desert Sand-VY DK	158	62	152	60	146	57
3774	Desert Sand-VY LT	247	97	237	93	229	90
3778	Terra Cotta-LT	49	19	47	18	45	17
3779	Terra Cotta-UL VY LT	21	8	20	8	19	7
3799	Pewter Gray-VY DK	202	79	194	76	187	73
3802	Antique Mauve-VY DK	30	12	28	11	27	11
3803	Mauve-MD	7	2	7	2	7	2
3809	Turquoise-VY DK	441	173	424	166	408	160
3810	Turquoise-DK	463	182	445	175	429	169
3811	Turquoise-VY LT	323	127	310	122	299	117
3823	Yellow-UL Pale	52	20	50	19	48	19
3845	Bright Turquoise-MD	196	77	188	74	181	71
3846	Bright Turquoise-LT	2009	791	1932	760	1860	732
3847	Teal Green-DK	37	14	35	14	34	13
3848	Teal Green-MD	253	99	244	96	235	92
3849	Teal Green-LT	182	71	175	69	169	66
3856	Mahogany-UL VY LT	9	3	8	3	8	3
3859	Rosewood-LT	161	63	154	60	149	58
3860	Cocoa	139	54	134	52	129	50
3861	Cocoa-LT	40	15	38	15	37	14
3864	Mocha Beige-LT	333	131	321	126	309	121
3865	Winter White	3033	1194	2916	1148	2808	1105
3866	Mocha Brown-UL VY LT	1734	683	1668	656	1606	632
ecru	Ecru	179	71	172	68	166	65

Extended thread usage table.							
DMC	Name	Usage (cm)	Usage (inch)	Usage (cm)	Usage (inch)	Usage (cm)	Usage (inch)
		28		30		32	
224	Shell Pink-VY LT	46	17	43	16	40	15
225	Shell Pink-UL VY LT	55	21	52	20	48	19
315	Antique Mauve-VY DK	43	17	40	16	38	15
317	Pewter Gray	226	89	211	83	197	78
356	Terra Cotta-MD	26	10	24	9	23	8
369	Pistachio Green-VY LT	202	79	188	74	177	69
407	Desert Sand-DK	60	23	56	22	52	20
413	Pewter Gray-DK	72	28	67	26	63	25
414	Steel Gray-DK	199	78	186	73	174	69
415	Pearl Gray	521	205	487	191	456	179
437	Tan-LT	19	7	18	7	17	6
452	Shell Gray-MD	40	15	37	14	35	14
453	Shell Gray-LT	203	80	190	74	178	70
502	Blue Green	41	16	38	15	36	14
503	Blue Green-MD	37	14	35	13	33	12
519	Sky Blue	1153	454	1076	424	1009	397
522	Fern Green	78	30	73	28	68	26
524	Fern Green-VY LT	451	177	421	166	395	155
535	Ash Gray-VY LT	196	77	183	72	172	68
543	Beige Brown-UL VY LT	296	116	277	109	259	102
598	Turquoise-LT	578	227	539	212	506	199
613	Drab Brown-VY LT	136	53	127	50	119	47
642	Beige Gray-DK	106	41	99	38	93	36

Copyright (c) 2006-, Golden Kite (Golden K.)

Internet: [www.goldenkite.com](http://www.goldenkite.com)

e-mail: [info@goldenkite.com](mailto:info@goldenkite.com)

644	Beige Gray-MD	108	42	101	40	95	37
645	Beaver Gray-VY DK	168	66	157	61	147	57
646	Beaver Gray-DK	104	41	97	38	91	35
647	Beaver Gray-MD	183	72	171	67	160	63
648	Beaver Gray-LT	384	151	359	141	336	132
712	Cream	1685	663	1573	619	1474	580
738	Tan-VY LT	125	49	116	46	109	43
739	Tan-UL VY LT	248	97	232	91	217	85
746	Off White	318	125	297	116	278	109
747	Sky Blue-VY LT	1124	442	1049	413	983	387
754	Peach-LT	63	24	59	23	55	21
758	Terra Cotta-VY LT	45	17	42	16	39	15
760	Salmon	10	3	9	3	8	3
762	Pearl Gray-VY LT	2835	1116	2646	1042	2481	977
775	Baby Blue-VY LT	467	183	436	171	408	160
807	Peacock Blue	191	75	178	70	167	65
819	Baby Pink-LT	386	152	361	142	338	133
822	Beige Gray-LT	842	331	785	309	736	290
827	Blue-VY LT	641	252	598	235	561	221
828	Blue-UL VY LT	357	140	334	131	313	123
838	Beige Brown-VY DK	11	4	10	4	10	3
842	Beige Brown-VY LT	166	65	155	61	145	57
844	Beaver Brown-UL DK	115	45	107	42	101	39
927	Gray Green-LT	570	224	532	209	498	196
928	Gray Green-VY LT	539	212	503	198	472	186
931	Antique Blue-MD	253	99	236	92	221	87
932	Antique Blue-LT	944	372	881	347	826	325
934	Black Avocado Green	82	32	76	30	71	28
945	Tawny	77	30	71	28	67	26
948	Peach-VY LT	393	154	367	144	344	135
950	Desert Sand-LT	108	42	101	40	95	37
951	Tawny -LT	368	145	343	135	322	127
955	Nile Green-LT	532	209	496	195	465	183
964	Sea Green-LT	443	174	413	163	388	152
992	Aquamarine-MD	21	8	19	7	18	7
3024	Brown Gray -VY LT	828	326	773	304	725	285
3032	Mocha Brown-MD	85	33	79	31	74	29
3033	Mocha Brown-VY LT	91	35	85	33	80	31
3041	Antique Violet-MD	33	13	31	12	29	11
3042	Antique Violet-LT	30	12	28	11	26	10
3072	Beaver Gray-VY LT	1394	548	1301	512	1220	480
3354	Dusty Rose-LT	8	3	8	3	7	3
3721	Shell Pink- DK	1	1	1	1	1	1
3722	Shell Pink- MD	37	14	35	13	33	12
3726	Antique Mauve-DK	62	24	58	23	55	21
3740	Antique Violet-DK	25	10	23	9	22	8
3743	Antique Violet-VY LT	46	17	43	16	40	15
3752	Antique Blue-VY LT	543	213	507	199	475	187
3753	Antique Blue-UL VY LT	916	361	855	337	802	316
3756	Baby Blue-UL VY LT	2255	888	2105	829	1973	777
3760	Wedgewood-MD	53	21	50	19	47	18
3761	Sky Blue-LT	1407	554	1313	517	1231	484
3766	Peacock Blue-LT	261	102	244	95	228	89
3768	Gray Green-DK	199	78	186	73	174	69
3770	Tawny -VY LT	631	248	589	232	552	217
3772	Desert Sand-VY DK	141	55	131	52	123	48
3774	Desert Sand-VY LT	221	87	206	81	193	76
3778	Terra Cotta-LT	44	17	41	16	38	15
3779	Terra Cotta-UL VY LT	19	7	17	7	16	6

Copyright (c) 2006-, Golden Kite (Golden K.)

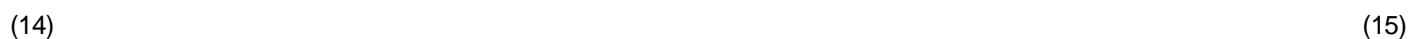
Internet: [www.goldenkite.com](http://www.goldenkite.com)

e-mail: [info@goldenkite.com](mailto:info@goldenkite.com)

3799	Pewter Gray -VY DK	180	71	168	66	158	62
3802	Antique Mauve-VY DK	26	10	25	10	23	9
3803	Mauve-MD	6	2	6	2	6	2
3809	Turquoise-VY DK	393	154	367	144	344	135
3810	Turquoise-DK	413	163	386	152	362	142
3811	Turquoise-VY LT	288	113	269	106	252	99
3823	Yellow -UL Pale	46	18	43	17	41	16
3845	Bright Turquoise-MD	175	69	163	64	153	60
3846	Bright Turquoise-LT	1794	706	1674	659	1569	618
3847	Teal Green-DK	33	13	31	12	29	11
3848	Teal Green-MD	226	89	211	83	198	78
3849	Teal Green-LT	163	64	152	59	142	56
3856	Mahogany-UL VY LT	8	3	7	2	7	2
3859	Rosewood-LT	143	56	134	52	125	49
3860	Cocoa	124	48	116	45	109	42
3861	Cocoa-LT	35	14	33	13	31	12
3864	Mocha Beige-LT	298	117	278	109	260	102
3865	Winter White	2708	1066	2527	995	2369	933
3866	Mocha Brown-UL VY LT	1549	609	1445	569	1355	533
ecru	Ecru	160	63	149	59	140	55

	10	20	30	40	50
10					
20					
30					
40					
50					
60					
70					





$$\begin{aligned} & \left( \frac{\partial}{\partial t} + \nabla_{\vec{v}} \cdot \vec{v} \right) f = - \nabla_{\vec{x}} \cdot (\vec{v} f) \\ & \quad + \sum_{j,k=1}^d \frac{\partial}{\partial v_j} \left( v_k \frac{\partial f}{\partial v_k} \right) \frac{\partial f}{\partial v_j} \end{aligned} \tag{16}$$

(17)

		220	230	240	250	260	
	10						
	20						
	30						
	40						
	50						
	60						
	70						

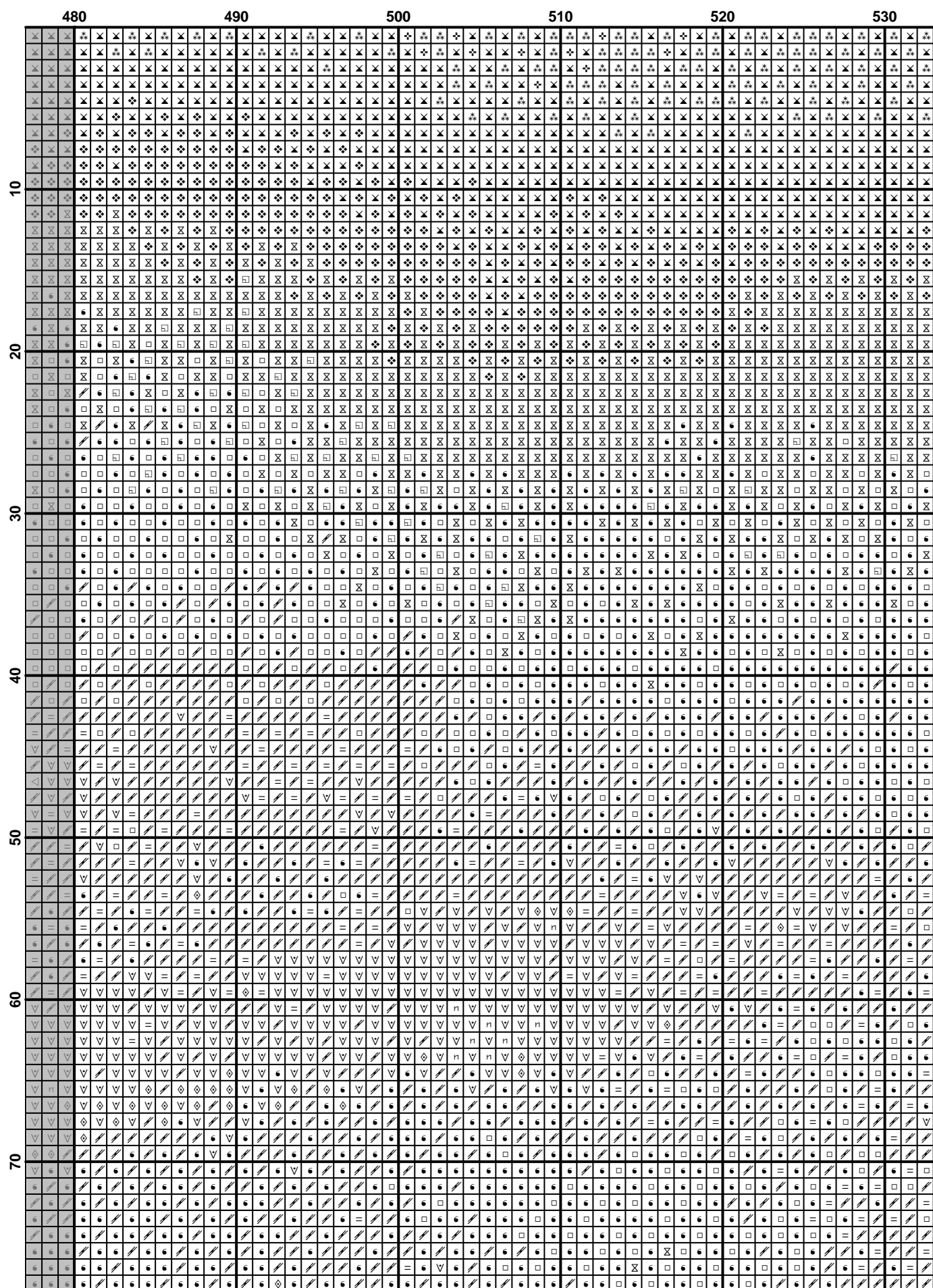
[illegible]

	320	330	340	350	360	370
10						
20						
30						
40						
50						
60						
70						

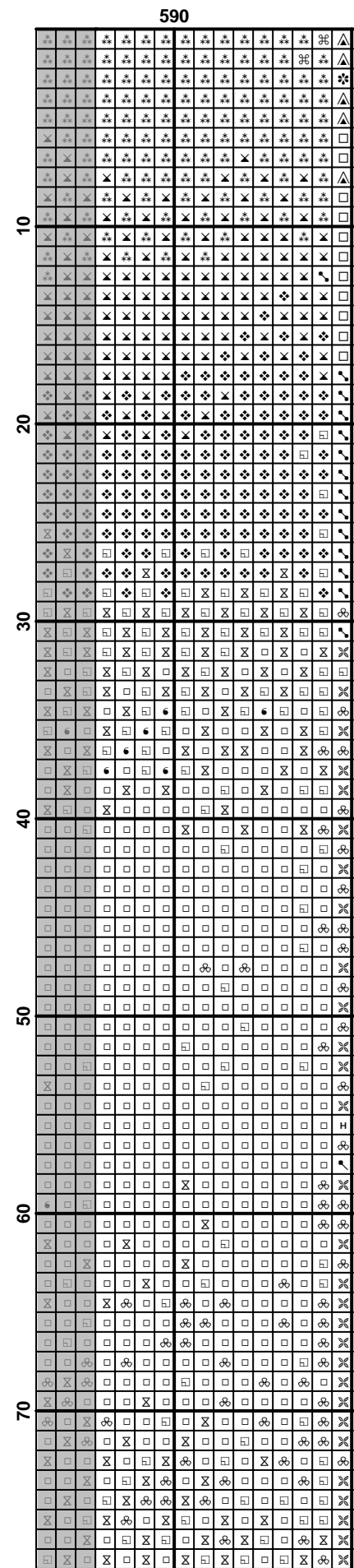
(21)

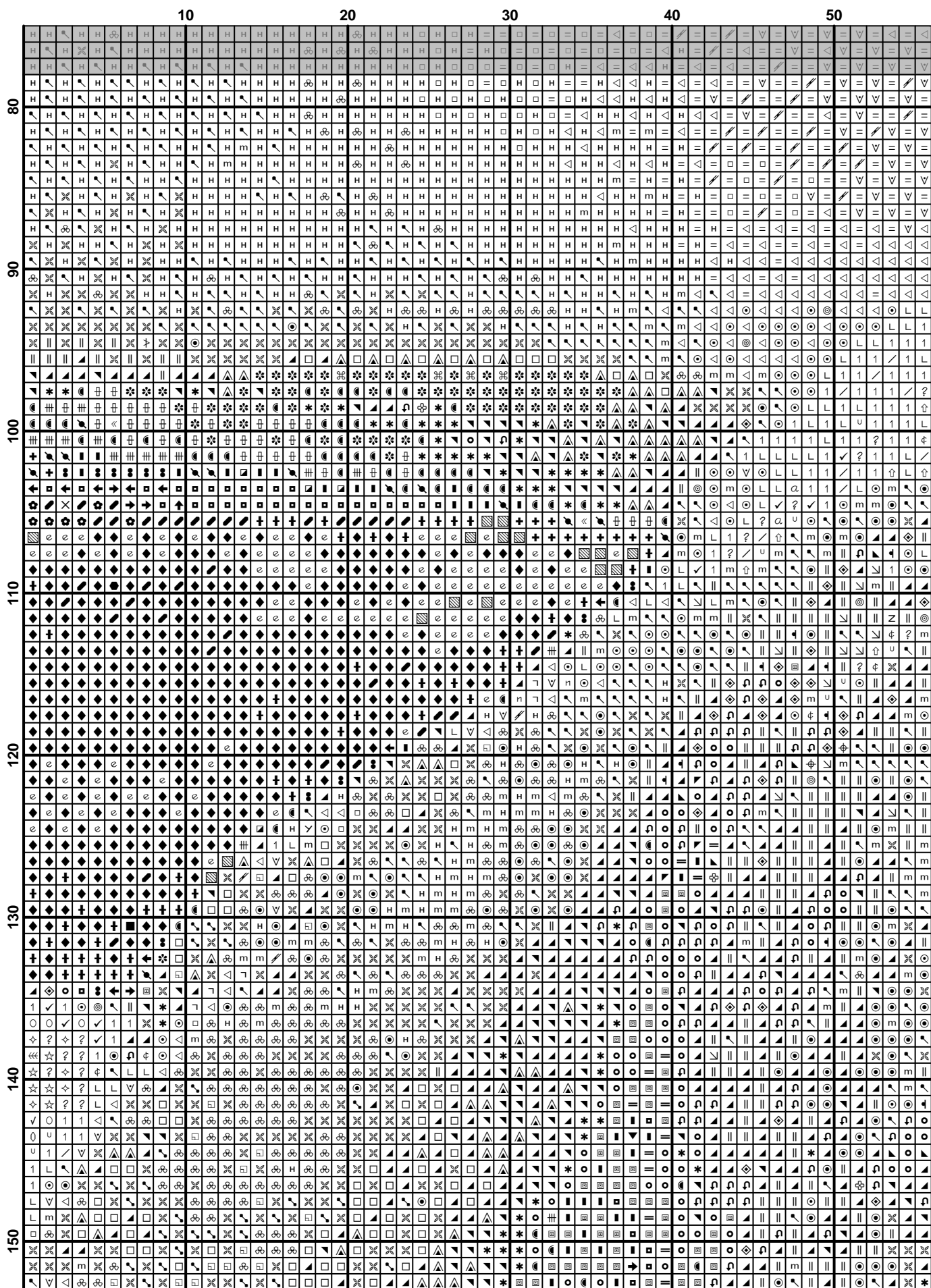






	530	540	550	560	570	580
10						
20						
30						
40						
50						
60						
70						





[illegible]

	110	120	130	140	150	160
80	U	L	L	L	L	L
81	L	L	L	L	L	L
82	L	L	L	L	L	L
83	L	L	L	L	L	L
84	L	L	L	L	L	L
85	L	L	L	L	L	L
86	L	L	L	L	L	L
87	L	L	L	L	L	L
88	L	L	L	L	L	L
89	L	L	L	L	L	L
90	L	L	L	L	L	L
91	L	L	L	L	L	L
92	L	L	L	L	L	L
93	L	L	L	L	L	L
94	L	L	L	L	L	L
95	L	L	L	L	L	L
96	L	L	L	L	L	L
97	L	L	L	L	L	L
98	L	L	L	L	L	L
99	L	L	L	L	L	L
100	L	L	L	L	L	L
101	L	L	L	L	L	L
102	L	L	L	L	L	L
103	L	L	L	L	L	L
104	L	L	L	L	L	L
105	L	L	L	L	L	L
106	L	L	L	L	L	L
107	L	L	L	L	L	L
108	L	L	L	L	L	L
109	L	L	L	L	L	L
110	L	L	L	L	L	L
111	L	L	L	L	L	L
112	L	L	L	L	L	L
113	L	L	L	L	L	L
114	L	L	L	L	L	L
115	L	L	L	L	L	L
116	L	L	L	L	L	L
117	L	L	L	L	L	L
118	L	L	L	L	L	L
119	L	L	L	L	L	L
120	L	L	L	L	L	L
121	L	L	L	L	L	L
122	L	L	L	L	L	L
123	L	L	L	L	L	L
124	L	L	L	L	L	L
125	L	L	L	L	L	L
126	L	L	L	L	L	L
127	L	L	L	L	L	L
128	L	L	L	L	L	L
129	L	L	L	L	L	L
130	L	L	L	L	L	L
131	L	L	L	L	L	L
132	L	L	L	L	L	L
133	L	L	L	L	L	L
134	L	L	L	L	L	L
135	L	L	L	L	L	L
136	L	L	L	L	L	L
137	L	L	L	L	L	L
138	L	L	L	L	L	L
139	L	L	L	L	L	L
140	L	L	L	L	L	L
141	L	L	L	L	L	L
142	L	L	L	L	L	L
143	L	L	L	L	L	L
144	L	L	L	L	L	L
145	L	L	L	L	L	L
146	L	L	L	L	L	L
147	L	L	L	L	L	L
148	L	L	L	L	L	L
149	L	L	L	L	L	L
150	L	L	L	L	L	L
151	L	L	L	L	L	L
152	L	L	L	L	L	L
153	L	L	L	L	L	L
154	L	L	L	L	L	L
155	L	L	L	L	L	L
156	L	L	L	L	L	L
157	L	L	L	L	L	L
158	L	L	L	L	L	L
159	L	L	L	L	L	L
160	L	L	L	L	L	L

$$(28) \quad \mathcal{L}(\mathcal{A}) = \mathcal{L}(\mathcal{B}) \quad (29)$$

[illegible]



[illegible]

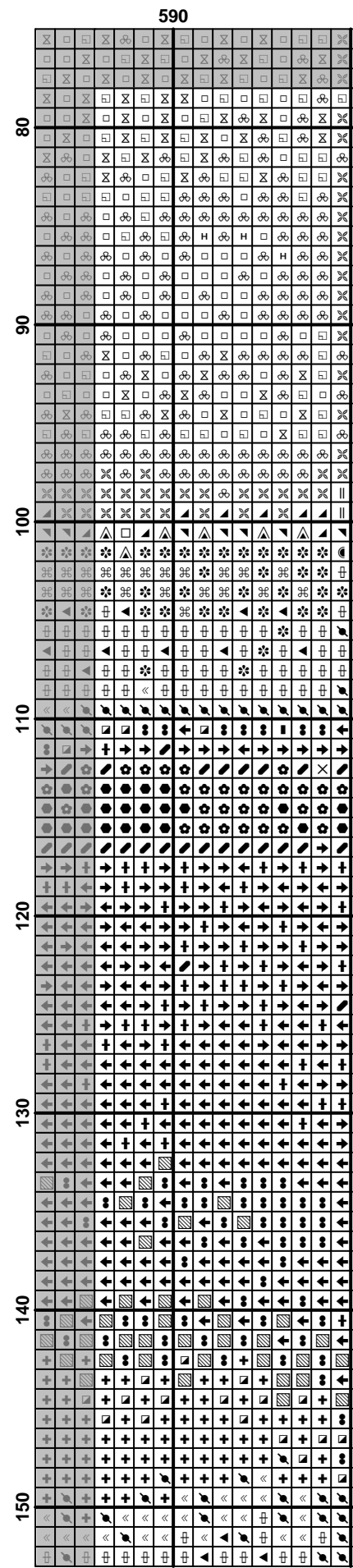
[illegible]

[illegible]

$$(33) \quad \mathcal{L}(\mathcal{A}) = \mathcal{L}(\mathcal{B}) \quad (34)$$

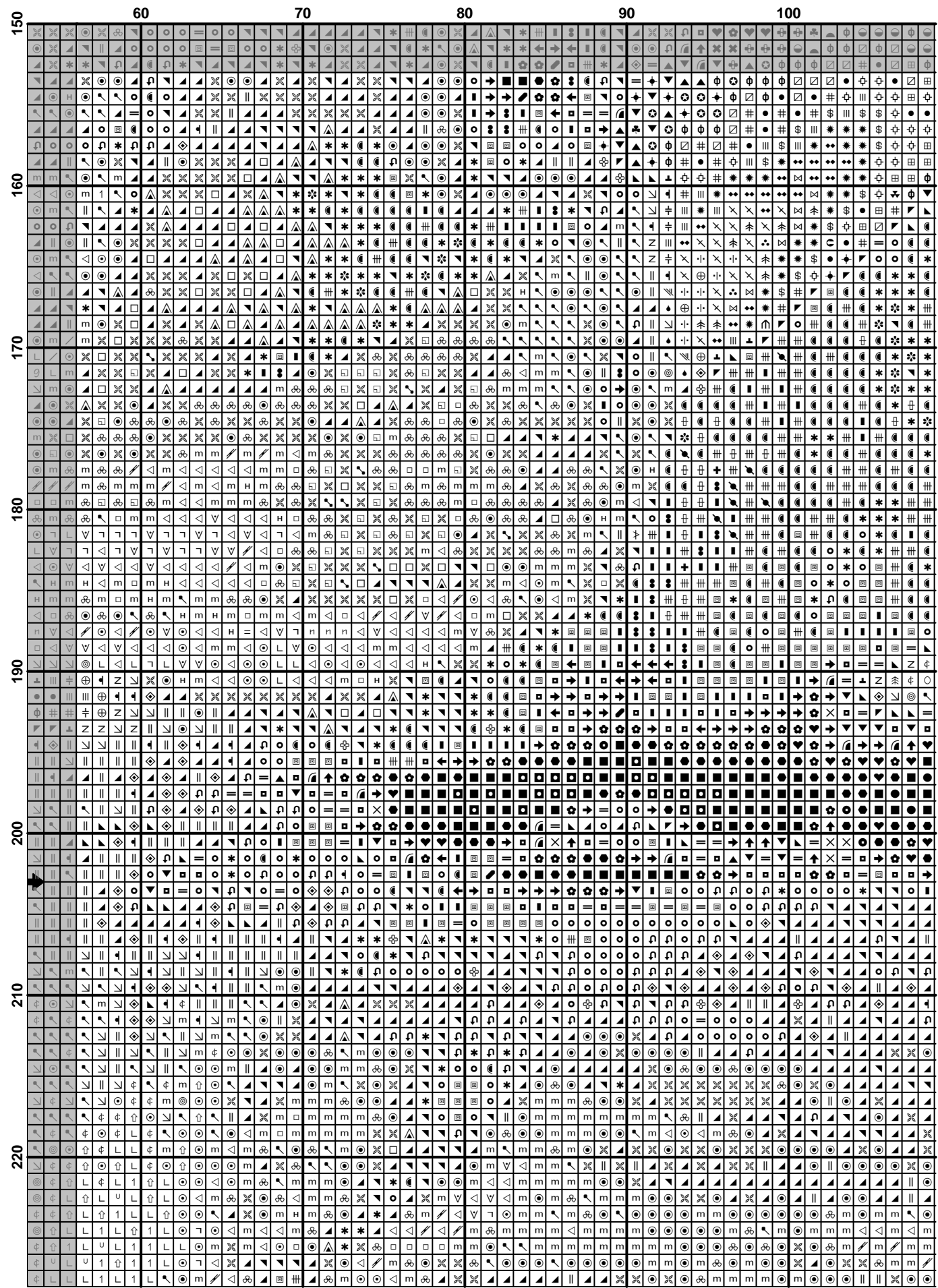
	480	490	500	510	520	530
80						
90						
100						
110						
120						
130						
140						
150						

	530	540	550	560	570	580
80						
90						
100						
110						
120						
130						
140						
150						



[illegible]





	110	120	130	140	150	160
150						
160						
170						
180						
190						
200						
210						
220						

	160	170	180	190	200	210
150	...	...	...	...	...	...
160	...	...	...	...	...	...
170	...	...	...	...	...	...
180	...	...	...	...	...	...
190	...	...	...	...	...	...
200	...	...	...	...	...	...
210	...	...	...	...	...	...
220	...	...	...	...	...	...

[illegible]

[illegible]

	320	330	340	350	360	370
150	...	...	...	...	...	...
160	...	...	...	...	...	...
170	...	...	...	...	...	...
180	...	...	...	...	...	...
190	...	...	...	...	...	...
200	...	...	...	...	...	...
210	...	...	...	...	...	...
220	...	...	...	...	...	...

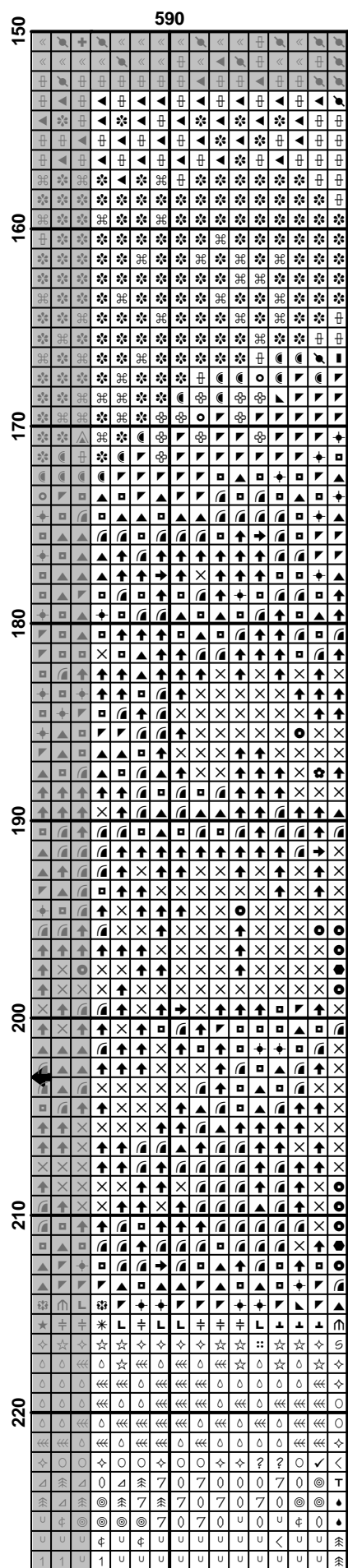
[illegible]

$$(45) \quad \frac{1}{\Gamma(\alpha)} \int_0^t (t-s)^{\alpha-1} f(s) ds = \mathcal{I}_\alpha f(t), \quad t \in J, \quad (46)$$



	480	490	500	510	520	530
150						
160						
170						
180						
190						
200						
210						
220						

$$(47) \quad \frac{1}{\Gamma(\alpha)} \int_0^t (t-s)^{\alpha-1} f(s) ds = \frac{1}{\Gamma(\alpha)} \int_0^t (t-s)^{\alpha-1} f(s) ds + \frac{1}{\Gamma(\alpha)} \int_0^t (t-s)^{\alpha-1} f(s) ds$$



$$(49) \quad \frac{1}{\Gamma(\alpha)} \int_0^t (t-s)^{\alpha-1} f(s) ds = \frac{1}{\Gamma(\alpha)} \int_0^t (t-s)^{\alpha-1} f(s) ds$$

	60	70	80	90	100
230	...	...	...	...	...
240	...	...	...	...	...
250	...	...	...	...	...
260	...	...	...	...	...
270	...	...	...	...	...
280	...	...	...	...	...
290	...	...	...	...	...
300	...	...	...	...	...

[illegible]

$$(52) \quad \dots \quad (53)$$

	220	230	240	250	260
230	<div></div>	<div></div>	<div></div>	<div></div>	<div></div>
240	<div></div>	<div></div>	<div></div>	<div></div>	<div></div>
250	<div></div>	<div></div>	<div></div>	<div></div>	<div></div>
260	<div></div>	<div></div>	<div></div>	<div></div>	<div></div>
270	<div></div>	<div></div>	<div></div>	<div></div>	<div></div>
280	<div></div>	<div></div>	<div></div>	<div></div>	<div></div>
290	<div></div>	<div></div>	<div></div>	<div></div>	<div></div>
300	<div></div>	<div></div>	<div></div>	<div></div>	<div></div>



$$(54) \quad \frac{1}{\Gamma(\alpha)} \int_0^t (t-s)^{\alpha-1} f(s) ds = \frac{1}{\Gamma(\alpha)} \int_0^t (t-s)^{\alpha-1} \left( \sum_{k=0}^\infty \frac{(t-s)^k}{k!} f^{(k)}(s) \right) ds$$

$$(55) \quad \text{[...]} \quad (56)$$

[illegible]

	430	440	450	460	470	480
230	...	...	...	...	...	...
240	...	...	...	...	...	...
250	...	...	...	...	...	...
260	...	...	...	...	...	...
270	...	...	...	...	...	...
280	...	...	...	...	...	...
290	...	...	...	...	...	...
300	...	...	...	...	...	...

[illegible]

$$(59) \quad \text{[...]} \quad (60)$$

		590																							
230	u	φ	⊗	⊗	⊗	7	0	7	0	u	0	u	φ	0	⬤										
	u	u	u	φ	u	φ	u	u	u	u	u	u	<	u	u	⬤									
	1	1	u	1	u	u	u	u	u	u	u	u	u	u	u	⬤									
	1	1	1	/	1	1	1	u	1	1	1	1	1	u	1	u	φ								
	1	1	/	1	/	1	1	1	1	1	1	1	1	u	1	u	0								
	1	1	1	1	1	1	1	1	1	1	1	1	1	1	1	u	φ								
	1	1	1	1	1	1	1	1	1	1	1	1	1	1	1	u	φ								
	1	1	1	1	1	1	1	1	1	1	1	1	1	1	1	u	φ								
	1	1	1	1	1	1	1	1	1	1	1	1	1	1	1	u	φ								
	1	u	1	u	u	u	u	u	u	u	u	u	u	u	u	0									
240	u	1	u	u	u	u	u	u	u	u	u	u	u	1	u	0									
	0	<	u	0	<	<	0	<	0	<	0	0	0	0	u	0									
	0	<	0	<	0	<	0	<	0	0	0	0	0	0	<	0									
	0	0	0	<	0	<	0	<	0	<	0	<	0	<	<	0									
	<	u	<	u	<	u	<	u	<	u	<	u	<	u	<	u	⬤								
	u	<	u	<	u	<	u	0	u	<	u	<	u	0	u	⬤									
	u	u	φ	u	u	φ	0	φ	0	u	0	0	0	0	0	⬤									
	u	φ	0	u	0	u	0	0	0	0	0	0	0	0	0	⬤									
	7	φ	7	u	φ	7	φ	0	φ	0	0	0	0	0	0	⬤									
	φ	u	φ	7	0	φ	0	⬤	0	⬤	0	⬤	⬤	⬤	⬤	⬤									
250	⊗	⊗	⊗	⬤	⊗	⬤	⊗	⬤	⬤	⬤	⬤	⬤	⬤	⬤	⬤	⬤									
	⊗	⊗	⊗	⬤	⬤	⬤	⬤	⬤	⬤	⬤	⬤	⬤	⬤	⬤	⬤	⬤									
	⊗	⊗	⊗	⬤	⬤	⬤	⬤	⬤	⬤	⬤	⬤	⬤	⬤	⬤	⬤	⬤									
	φ	⊗	φ	7	0	⊗	⬤	⬤	7	⬤	7	⬤	7	⊗	⬤	⬤									
	u	0	u	<	u	u	u	<	u	<	u	<	u	<	u	<									
	0	0	<	✓	1	0	u	u	✓	u	✓	✓	u	0	u	<									
	✓	u	✓	1	0	1	u	1	u	u	u	0	u	u	u	<									
	u	φ	u	u	u	u	φ	⊗	φ	7	φ	0	⊗	⬤											
	⬤	⬤	⊗	⬤	⬤	⬤	⬤	⬤	⬤	⬤	⬤	⬤	⬤	⬤	⬤	⬤									
	⬤	⬤	⬤	⬤	⬤	⬤	⬤	⬤	⬤	⬤	⬤	⬤	⬤	⬤	⬤	⬤									
260	⬤	⬤	⬤	⬤	⬤	⬤	⬤	⬤	⬤	⬤	⬤	⬤	⬤	⬤	⬤	⬤									
	u	φ	⊗	z	⬤	⬤	⬤	⬤	⬤	⬤	⬤	⬤	⬤	⬤	⬤	⬤									
	u	u	φ	⬤	⬤	⬤	⬤	⬤	⬤	⬤	⬤	⬤	⬤	⬤	⬤	⬤									
	u	u	u	0	T	L	⬤	⬤	⬤	⬤	⬤	⬤	⬤	⬤	⬤	⬤									
	u	u	u	0	⊗	z	⬤	⬤	⬤	⬤	⬤	⬤	⬤	⬤	⬤	⬤									
	0	u	7	u	7	0	⬤	⬤	⬤	⬤	⬤	⬤	⬤	⬤	⬤	⬤									
	⬤	0	φ	7	u	u	7	⬤	⬤	⬤	⬤	⬤	⬤	⬤	⬤	⬤									
	z	⬤	0	u	L	u	u	7	φ	⬤	⬤	⬤	⬤	⬤	⬤	⬤									
	1	z	⬤	φ	1	u	u	u	7	⊗	⬤	0	⬤	⬤	⬤	⬤									
	z	z	z	⬤	0	L	1	u	1	u	<	⬤	⬤	<	<	0									
270	z	1	1	⬤	0	⊗	u	u	u	u	0	u	⬤	⬤	⬤	⬤									
	⬤	z	1	1	⬤	⬤	⬤	⬤	⬤	⬤	⬤	⬤	⬤	⬤	⬤	⬤									
	⬤	⬤	⬤	⬤	⬤	⬤	⬤	⬤	⬤	⬤	⬤	⬤	⬤	⬤	⬤	⬤									
	⬤	⬤	⬤	⬤	⬤	⬤	⬤	⬤	⬤	⬤	⬤	⬤	⬤	⬤	⬤	⬤									
	⬤	⬤	⬤	⬤	⬤	⬤	⬤	⬤	⬤	⬤	⬤	⬤	⬤	⬤	⬤	⬤									
	⬤	⬤	⬤	⬤	⬤	⬤	⬤	⬤	⬤	⬤	⬤	⬤	⬤	⬤	⬤	⬤									
	⬤	⬤	⬤	⬤	⬤	⬤	⬤	⬤	⬤	⬤	⬤	⬤	⬤	⬤	⬤	⬤									
	⬤	⬤	⬤	⬤	⬤	⬤	⬤	⬤	⬤	⬤	⬤	⬤	⬤	⬤	⬤	⬤									
	⬤	⬤	⬤	⬤	⬤	⬤	⬤	⬤	⬤	⬤	⬤	⬤	⬤	⬤	⬤	⬤									
	⬤	⬤	⬤	⬤	⬤	⬤	⬤	⬤	⬤	⬤	⬤	⬤	⬤	⬤	⬤	⬤									
	⬤	⬤	⬤	⬤	⬤	⬤	⬤	⬤	⬤	⬤	⬤	⬤	⬤	⬤	⬤	⬤									
280	⬤	⬤	⬤	⬤	⬤	⬤	⬤	⬤	⬤	⬤	⬤	⬤	⬤	⬤	⬤	⬤									
	⬤	⬤	⬤	⬤	⬤	⬤	⬤	⬤	⬤	⬤	⬤	⬤	⬤	⬤	⬤	⬤									
	⬤	⬤	⬤	⬤	⬤	⬤	⬤	⬤	⬤	⬤	⬤	⬤	⬤	⬤	⬤	⬤									
	⬤	⬤	⬤	⬤	⬤	⬤	⬤	⬤	⬤	⬤	⬤	⬤	⬤	⬤	⬤	⬤									
	⬤	⬤	⬤	⬤	⬤	⬤	⬤	⬤	⬤	⬤	⬤	⬤	⬤	⬤	⬤	⬤									
	⬤	⬤	⬤	⬤	⬤	⬤	⬤	⬤	⬤	⬤	⬤	⬤	⬤	⬤	⬤	⬤									
	⬤	⬤	⬤	⬤	⬤	⬤	⬤	⬤	⬤	⬤	⬤	⬤	⬤	⬤	⬤	⬤									
	⬤	⬤	⬤	⬤	⬤	⬤	⬤	⬤	⬤	⬤	⬤	⬤	⬤	⬤	⬤	⬤									
	⬤	⬤	⬤	⬤	⬤	⬤	⬤	⬤	⬤	⬤	⬤	⬤	⬤	⬤	⬤	⬤									
	⬤	⬤	⬤	⬤	⬤	⬤	⬤	⬤	⬤	⬤	⬤	⬤	⬤	⬤	⬤	⬤									
	⬤	⬤	⬤	⬤	⬤	⬤	⬤	⬤	⬤	⬤	⬤	⬤	⬤	⬤	⬤	⬤									
290	⬤	⬤	⬤	⬤	⬤	⬤	⬤	⬤	⬤	⬤	⬤	⬤	⬤	⬤	⬤	⬤									
	⬤	⬤	⬤	⬤	⬤	⬤	⬤	⬤	⬤	⬤	⬤	⬤	⬤	⬤	⬤	⬤									
	⬤	⬤	⬤	⬤	⬤	⬤	⬤	⬤	⬤	⬤	⬤	⬤	⬤	⬤	⬤	⬤									
	⬤	⬤	⬤	⬤	⬤	⬤	⬤	⬤	⬤	⬤	⬤	⬤	⬤	⬤	⬤	⬤									
	⬤	⬤	⬤	⬤	⬤	⬤	⬤	⬤	⬤	⬤	⬤	⬤	⬤	⬤	⬤	⬤									
	⬤	⬤	⬤	⬤	⬤	⬤	⬤	⬤	⬤	⬤	⬤	⬤	⬤	⬤	⬤	⬤									
	⬤	⬤	⬤	⬤	⬤	⬤	⬤	⬤	⬤	⬤	⬤	⬤	⬤	⬤	⬤	⬤									
	⬤</																								

[illegible]



	60	70	80	90	100
300	1	0	1	1	1
310	0	0	0	0	0
320	0	0	0	0	0
330	0	0	0	0	0
340	0	0	0	0	0
350	0	0	0	0	0
360	0	0	0	0	0
370	0	0	0	0	0

	110	120	130	140	150	160
300						
310						
320						
330						
340						
350						
360						
370						

[illegible]

	220	230	240	250	260
300	<div></div>	<div></div>	<div></div>	<div></div>	<div></div>
310	<div></div>	<div></div>	<div></div>	<div></div>	<div></div>
320	<div></div>	<div></div>	<div></div>	<div></div>	<div></div>
330	<div></div>	<div></div>	<div></div>	<div></div>	<div></div>
340	<div></div>	<div></div>	<div></div>	<div></div>	<div></div>
350	<div></div>	<div></div>	<div></div>	<div></div>	<div></div>
360	<div></div>	<div></div>	<div></div>	<div></div>	<div></div>
370	<div></div>	<div></div>	<div></div>	<div></div>	<div></div>

$$(66) \quad \text{[...]} \quad (67)$$

(68)

300	380	390	400	410	420
300	T	T	T	T	T
310	T	T	T	T	T
320	T	T	T	T	T
330	T	T	T	T	T
340	T	T	T	T	T
350	T	T	T	T	T
360	T	T	T	T	T
370	T	T	T	T	T
380	T	T	T	T	T
390	T	T	T	T	T
400	T	T	T	T	T
410	T	T	T	T	T
420	T	T	T	T	T

[illegible]



300	480	490	500	510	520	530
310						
320						
330						
340						
350						
360						
370						

	530	540	550	560	570	580
300	0	0	0	0	0	0
310	0	0	0	0	0	0
320	0	0	0	0	0	0
330	0	0	0	0	0	0
340	0	0	0	0	0	0
350	0	0	0	0	0	0
360	0	0	0	0	0	0
370	0	0	0	0	0	0

590	
300	
310	
320	
330	
340	
350	
360	
370	

		10										20										30										40										50																																																																																																																																																																																																																																																																																																																																																																																																																																						
380																																																																																																																																																																																																																																																																																																																																																																																																																																																																																

[illegible]

[illegible]

	160										170										180										190										200										210																			
380	[Pattern: 160x10 grid]																																																																					
	[Pattern: 170x10 grid]																																																																					
	[Pattern: 180x10 grid]																																																																					
	[Pattern: 190x10 grid]																																																																					
	[Pattern: 200x10 grid]																																																																					
	[Pattern: 210x10 grid]																																																																					
	[Pattern: 160x10 grid]																																																																					
	[Pattern: 170x10 grid]																																																																					
	[Pattern: 180x10 grid]																																																																					
	[Pattern: 190x10 grid]																																																																					
390	[Pattern: 200x10 grid]																																																																					
	[Pattern: 210x10 grid]																																																																					
	[Pattern: 160x10 grid]																																																																					
	[Pattern: 170x10 grid]																																																																					
	[Pattern: 180x10 grid]																																																																					
	[Pattern: 190x10 grid]																																																																					
	[Pattern: 200x10 grid]																																																																					
	[Pattern: 210x10 grid]																																																																					
	[Pattern: 160x10 grid]																																																																					
	[Pattern: 170x10 grid]																																																																					
400	[Pattern: 180x10 grid]																																																																					
	[Pattern: 190x10 grid]																																																																					
	[Pattern: 200x10 grid]																																																																					
	[Pattern: 210x10 grid]																																																																					
	[Pattern: 160x10 grid]																																																																					
	[Pattern: 170x10 grid]																																																																					
	[Pattern: 180x10 grid]																																																																					
	[Pattern: 190x10 grid]																																																																					
	[Pattern: 200x10 grid]																																																																					
	[Pattern: 210x10 grid]																																																																					

400



[illegible]

	320	330	340	350	360	370
380						

[illegible]

[illegible]

[illegible]

[illegible]

**590**

**400**