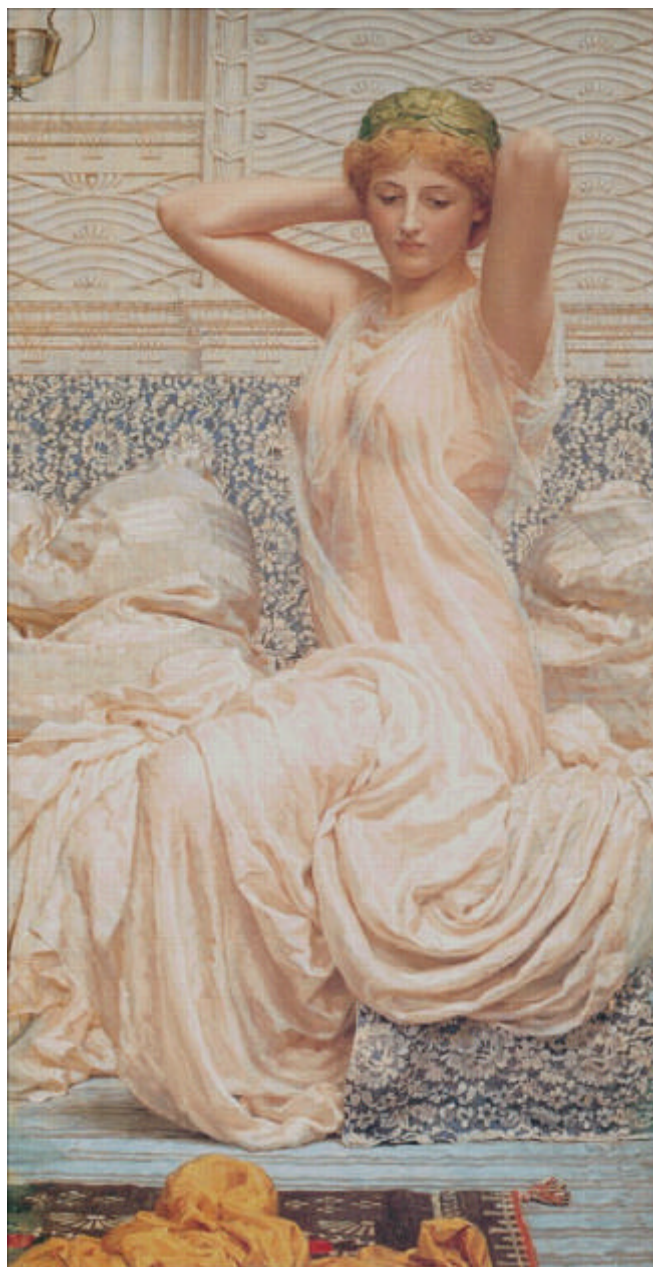


729 Silver



This pattern may not be copied, sold or in any other way handled in any way that violates the international copyright laws. If you get hold of this pattern (and or this document) in any other way than via a direct download from www.goldenkite.com or via a mail from us, you should report that to us at legal_actions@goldenkite.com .

Copyright (c) 2004-, Golden Kite. All rights reserved.

Instructions

Thank you for choosing Golden Kite products!
We hope you will have lots of fun with this cross-stitch pattern!

Fabric

Press the fabric with an iron if needed. A good thing to prevent the fabric from fraying is to machine zigzag the edges.

On large patterns, it is easiest to start from the upper left corner of the design. Make sure you have the proper margins before starting and that the fabric piece is of the correct size. The best way to verify this is to count all stitch positions on the fabric from the upper left corner downwards and to the right to make sure there is enough space for the design.

Some prefer to start in the center of the design instead. To locate the center of the fabric, fold the fabric in half both vertically and horizontally. The center is located where these two folds meet.

Stitches

Each length of DMC tread consists of six strands.

Use two of these strands for all stitches.

Note that some colors may be mixes (or blends) between two different pure colors. In that case take one strand of the two colors each and thread the two strands into the needle at the same time for stitching.

All stitches are full cross-stitches. No half-stitching and no back-stitching is necessary in this pattern.

All cross-stitches will be worked into the holes in the fabric from left to right. Always use the larger holes in the fabric for the stitches. Adjacent stitches should meet in the same hole. Make sure all stitches cross in the same direction.

Please be careful when washing the finished embroidery! The cotton thread may bleed when washed. Only hand wash it in lukewarm water. Remove excess water by roll it in a towel and lay it flat to air dry. Natural fabrics may shrink slightly when washed. We do not recommend washing the embroidery if not absolutely necessary and we take no responsibility for any damage that may occur.

When you start using this product you agree that Golden Kite (Golden K), or any people working for or in association with Golden Kite (Golden K), cannot be set responsible for any physical, mental, economical or other type of damage caused by this product (including this document, pattern, threads, needles and any other parts received by you from Golden Kite (Golden K)).

This pattern may not be copied, sold or in any other way handled in any way that violates the international copyright laws. If you get hold of this pattern (and or this document) in any other way than via a direct download from www.goldenkite.com or via a mail from us, you should report that to us at legal_actions@goldenkite.com .

Silver

| Stitch Count | |
|--------------|-----|
| Horizontal: | 500 |
| Vertical: | 963 |

| Recommended Fabric Color |
|--------------------------|
| Antique White |

This table tells the size of the pattern (without any margins) and the size of the fabric required to stitch the pattern (including recommended margins). 3 inch margins have been added on each side in the 'Including Margins' row.

The sizes are given for 14, 16 and 18 stitches per inch fabrics.

Make sure to use the 'Including Margins' row when cutting the piece of fabric to be used. Also make sure that 3 inch margins are enough for your stitching technique and add more margin areas if necessary.

| | 14 | | | | 16 | | | | 18 | | | |
|--------------------|-------|-------|--------|-------|-------|-------|--------|-------|-------|-------|--------|-------|
| | Width | | Height | | Width | | Height | | Width | | Height | |
| | cm | inch | cm | inch | cm | inch | cm | inch | cm | inch | cm | inch |
| Pattern: | 91 | 35.67 | 175 | 68.78 | 80 | 31.21 | 153 | 60.18 | 71 | 27.75 | 136 | 53.5 |
| Including Margins: | 107 | 42 | 191 | 75 | 96 | 38 | 169 | 67 | 87 | 34 | 152 | 60 |
| | 10 | | | | 12 | | | | 24 | | | |
| | Width | | Height | | Width | | Height | | Width | | Height | |
| | cm | inch | cm | inch | cm | inch | cm | inch | cm | inch | cm | inch |
| Pattern: | 127 | 49.93 | 245 | 96.29 | 106 | 41.61 | 204 | 80.24 | 53 | 20.8 | 102 | 40.12 |
| Including Margins: | 143 | 56 | 261 | 103 | 122 | 48 | 220 | 87 | 69 | 27 | 118 | 47 |
| | 25 | | | | 26 | | | | 27 | | | |
| | Width | | Height | | Width | | Height | | Width | | Height | |
| | cm | inch | cm | inch | cm | inch | cm | inch | cm | inch | cm | inch |
| Pattern: | 50 | 19.97 | 98 | 38.51 | 49 | 19.2 | 94 | 37.03 | 47 | 18.49 | 90 | 35.66 |
| Including Margins: | 66 | 26 | 114 | 45 | 65 | 26 | 110 | 44 | 63 | 25 | 106 | 42 |
| | 28 | | | | 30 | | | | 32 | | | |
| | Width | | Height | | Width | | Height | | Width | | Height | |
| | cm | inch | cm | inch | cm | inch | cm | inch | cm | inch | cm | inch |
| Pattern: | 45 | 17.83 | 87 | 34.39 | 42 | 16.64 | 81 | 32.09 | 39 | 15.6 | 76 | 30.09 |
| Including Margins: | 61 | 24 | 103 | 41 | 58 | 23 | 97 | 39 | 55 | 22 | 92 | 37 |

| Solid Color Stitches. Use two strands of the specified color for these stitches. | | |
|--|-----|-----------------------|
| Symbol | DMC | Name |
| ► | 223 | Shell Pink-LT |
| ↖ | 224 | Shell Pink-VY LT |
| ◄ | 317 | Pewter Gray |
| ↔ | 318 | Steel Gray-LT |
| ✦ | 334 | Baby Blue-MD |
| ■ | 356 | Terra Cotta-MD |
| < | 369 | Pistachio Green-VY LT |
| L | 402 | Mahogany-VY LT |
| = | 407 | Desert Sand-DK |
| ✦ | 414 | Steel Gray-DK |
| ◇ | 415 | Pearl Gray |
| ◇ | 422 | Hazelnut Brown-LT |
| ◎ | 451 | Shell Gray-DK |
| # | 452 | Shell Gray-MD |
| ● | 501 | Blue Green-DK |
| ▼ | 502 | Blue Green |
| ◄ | 503 | Blue Green-MD |
| ✦ | 523 | Fern Green-LT |
| ● | 535 | Ash Gray-VY LT |
| ◇ | 543 | Beige Brown-UL VY LT |
| ✦ | 642 | Beige Gray-DK |
| ✦ | 645 | Beaver Gray-VY DK |
| ✦ | 646 | Beaver Gray-DK |
| ▲ | 647 | Beaver Gray-MD |
| ▼ | 648 | Beaver Gray-LT |
| 1 | 712 | Cream |
| ▼ | 722 | Orange Spice-LT |
| 田 | 729 | Old Gold-MD |
| ↓ | 738 | Tan-VY LT |
| .. | 739 | Tan-UL VY LT |
| ^ | 747 | Sky Blue-VY LT |
| V | 754 | Peach-LT |
| ∇ | 758 | Terra Cotta-VY LT |
| ⊖ | 778 | Antique Mauve-VY LT |
| ▲ | 806 | Peacock Blue-DK |
| : | 819 | Baby Pink-LT |
| ρ | 828 | Blue-UL VY LT |
| ■ | 924 | Gray Green--VY DK |
| ⇒ | 926 | Gray Green-MD |
| \$ | 927 | Gray Green-LT |

| | | |
|----|------|----------------------|
| ↑ | 928 | Gray Green-VY LT |
| ● | 930 | Antique Blue-DK |
| ↓ | 931 | Antique Blue-MD |
| ⊖ | 932 | Antique Blue-LT |
| ? | 945 | Tawny |
| u | 948 | Peach-VY LT |
| 2 | 950 | Desert Sand-LT |
| c | 951 | Tawny-LT |
| 0 | 964 | Sea Green-LT |
| ▲ | 977 | Golden Brown-LT |
| ✦ | 3013 | Khaki Green-LT |
| 7 | 3024 | Brown Gray-VY LT |
| ◎ | 3032 | Mocha Brown-MD |
| ✦ | 3041 | Antique Violet-MD |
| + | 3052 | Green Gray-MD |
| .. | 3064 | Desert Sand |
| + | 3072 | Beaver Gray-VY LT |
| ⊗ | 3350 | Dusty Rose-UL DK |
| 田 | 3712 | Salmon-MD |
| ↓ | 3726 | Antique Mauve-DK |
| ♥ | 3740 | Antique Violet-DK |
| (| 3756 | Baby Blue-UL VY LT |
| ✦ | 3768 | Gray Green-DK |
| o | 3770 | Tawny-VY LT |
| ▲ | 3772 | Desert Sand-VY DK |
| ★ | 3773 | Desert Sand-MD |
| ✦ | 3778 | Terra Cotta-LT |
| ✦ | 3787 | Brown Gray-DK |
| ♂ | 3811 | Turquoise-VY LT |
| □ | 3825 | Pumpkin-Pale |
| | 3827 | Golden Brown-Pale |
| ☾ | 3832 | Raspberry-MD |
| ■ | 3834 | Grape-DK |
| ∞ | 3854 | Autumn Gold-MD |
| ◇ | 3855 | Autumn Gold-LT |
| ◁ | 3856 | Mahogany-UL VY LT |
| ♣ | 3860 | Cocoa |
| ## | 3861 | Cocoa-LT |
| ◎ | 3864 | Mocha Beige-LT |
| • | 3865 | Winter White |
| - | 3866 | Mocha Brown-UL VY LT |
| ~ | Ecrú | Ecrú |

Blend Stitches. Use one strand of each of DMC1 and DMC2 for these stitches.

| Symbol | DMC1 | Name1 | DMC2 | Name2 |
|--------|------|----------------------|------|-----------------------|
| ☉ | 3860 | Cocoa | 3772 | Desert Sand-VY DK |
| ✕ | 3032 | Mocha Brown-MD | 3013 | Khaki Green-LT |
| ▲ | 501 | Blue Green-DK | 502 | Blue Green |
| ● | 3740 | Antique Violet-DK | 3860 | Cocoa |
| ▤ | 927 | Gray Green-LT | 414 | Steel Gray-DK |
| ▲ | 224 | Shell Pink-VY LT | 950 | Desert Sand-LT |
| ▤ | 927 | Gray Green-LT | 928 | Gray Green-VY LT |
| e | 3072 | Beaver Gray-VY LT | 3866 | Mocha Brown-UL VY LT |
| ↑ | 415 | Pearl Gray | 3024 | Brown Gray-VY LT |
| ● | 3726 | Antique Mauve-DK | 3860 | Cocoa |
| ▤ | 3032 | Mocha Brown-MD | 451 | Shell Gray-DK |
| ↑ | 3041 | Antique Violet-MD | 3740 | Antique Violet-DK |
| ⌘ | 3864 | Mocha Beige-LT | 738 | Tan-VY LT |
| + | 738 | Tan-VY LT | 3856 | Mahogany-UL VY LT |
| ✕ | 977 | Golden Brown-LT | 356 | Terra Cotta-MD |
| 3 | 3827 | Golden Brown-Pale | 3855 | Autumn Gold-LT |
| ▤ | 645 | Beaver Gray-VY DK | 502 | Blue Green |
| ◆ | 223 | Shell Pink-LT | 3861 | Cocoa-LT |
| ☉ | 3772 | Desert Sand-VY DK | 3032 | Mocha Brown-MD |
| ✕ | 3778 | Terra Cotta-LT | 758 | Terra Cotta-VY LT |
| 5 | 738 | Tan-VY LT | 369 | Pistachio Green-VY LT |
| ● | 645 | Beaver Gray-VY DK | 3834 | Grape-DK |
| 3 | 3827 | Golden Brown-Pale | 977 | Golden Brown-LT |
| 6 | 3770 | Tawny-VY LT | 948 | Peach-VY LT |
| * | 931 | Antique Blue-MD | 503 | Blue Green-MD |
| ◆ | 930 | Antique Blue-DK | 502 | Blue Green |
| ▤ | 414 | Steel Gray-DK | 932 | Antique Blue-LT |
| h | 3855 | Autumn Gold-LT | 3856 | Mahogany-UL VY LT |
| ▤ | 647 | Beaver Gray-MD | 414 | Steel Gray-DK |
| Φ | 407 | Desert Sand-DK | 223 | Shell Pink-LT |
|) | 3778 | Terra Cotta-LT | 402 | Mahogany-VY LT |
| ♠ | 3064 | Desert Sand | 3772 | Desert Sand-VY DK |
| ■ | 503 | Blue Green-MD | 646 | Beaver Gray-DK |
| 9 | 754 | Peach-LT | 758 | Terra Cotta-VY LT |
| ≡ | 648 | Beaver Gray-LT | 950 | Desert Sand-LT |
| ♡ | 950 | Desert Sand-LT | 739 | Tan-UL VY LT |
| Φ | 950 | Desert Sand-LT | 3864 | Mocha Beige-LT |
| ❖ | 3064 | Desert Sand | 3032 | Mocha Brown-MD |
| ⊕ | 3032 | Mocha Brown-MD | 3864 | Mocha Beige-LT |
| ✱ | 3773 | Desert Sand-MD | 3778 | Terra Cotta-LT |
| ⊗ | 738 | Tan-VY LT | 758 | Terra Cotta-VY LT |
| ✕ | 3787 | Brown Gray-DK | 3772 | Desert Sand-VY DK |
| † | 422 | Hazelnut Brown-LT | 3032 | Mocha Brown-MD |
| 6 | 3827 | Golden Brown-Pale | 3064 | Desert Sand |
| ▤ | 3772 | Desert Sand-VY DK | 646 | Beaver Gray-DK |
| ℣ | 523 | Fern Green-LT | 3864 | Mocha Beige-LT |
| ✕ | 648 | Beaver Gray-LT | 3864 | Mocha Beige-LT |
| * | 927 | Gray Green-LT | 3864 | Mocha Beige-LT |
| ➔ | 3350 | Dusty Rose-UL DK | 3726 | Antique Mauve-DK |
|) | 3866 | Mocha Brown-UL VY LT | 3756 | Baby Blue-UL VY LT |
| т | 3866 | Mocha Brown-UL VY LT | ecru | Ecru |
| > | 543 | Beige Brown-UL VY LT | 3866 | Mocha Brown-UL VY LT |
| α | 543 | Beige Brown-UL VY LT | 648 | Beaver Gray-LT |

| | | | | |
|-----|------|-----------------------|------|-----------------------|
| › | 738 | Tan-VY LT | 950 | Desert Sand-LT |
| γ | 3024 | Brown Gray-VY LT | 543 | Beige Brown-UL VY LT |
| § | 369 | Pistachio Green-VY LT | 3864 | Mocha Beige-LT |
| ⌘ | 642 | Beige Gray-DK | 645 | Beaver Gray-VY DK |
| ∕ | 3064 | Desert Sand | 422 | Hazelnut Brown-LT |
| n | 3855 | Autumn Gold-LT | 739 | Tan-UL VY LT |
| z | 3825 | Pumpkin-Pale | 422 | Hazelnut Brown-LT |
| ❁ | 223 | Shell Pink-LT | 3860 | Cocoa |
| ⌘ | 503 | Blue Green-MD | 3013 | Khaki Green-LT |
| ✱ | 3860 | Cocoa | 407 | Desert Sand-DK |
| = | 951 | Tawny-LT | 543 | Beige Brown-UL VY LT |
| √ | 754 | Peach-LT | 951 | Tawny-LT |
| τ | 543 | Beige Brown-UL VY LT | 950 | Desert Sand-LT |
| ⌘ | 3773 | Desert Sand-MD | 758 | Terra Cotta-VY LT |
| □ | 754 | Peach-LT | 224 | Shell Pink-VY LT |
| ● | 407 | Desert Sand-DK | 3861 | Cocoa-LT |
| ▨ | 3834 | Grape-DK | 3726 | Antique Mauve-DK |
| m | 224 | Shell Pink-VY LT | 3856 | Mahogany-UL VY LT |
| ✱ | 407 | Desert Sand-DK | 3773 | Desert Sand-MD |
| ☼ | 3778 | Terra Cotta-LT | 223 | Shell Pink-LT |
| ❖ | 3773 | Desert Sand-MD | 224 | Shell Pink-VY LT |
| × | 758 | Terra Cotta-VY LT | 3856 | Mahogany-UL VY LT |
| // | 945 | Tawny | 3773 | Desert Sand-MD |
| ▲ | 3726 | Antique Mauve-DK | 223 | Shell Pink-LT |
| « | 3865 | Winter White | 819 | Baby Pink-LT |
| l | 3756 | Baby Blue-UL VY LT | 819 | Baby Pink-LT |
| lll | 3773 | Desert Sand-MD | 738 | Tan-VY LT |
| ‡ | 950 | Desert Sand-LT | 951 | Tawny-LT |
| / | 543 | Beige Brown-UL VY LT | 948 | Peach-VY LT |
| ☆ | 778 | Antique Mauve-VY LT | 950 | Desert Sand-LT |
| ∅ | 932 | Antique Blue-LT | 793 | Cornflower Blue-MD |
| ⊕ | 928 | Gray Green-VY LT | 414 | Steel Gray-DK |
| ‡ | 452 | Shell Gray-MD | 3024 | Brown Gray-VY LT |
| ⌘ | 3024 | Brown Gray-VY LT | 778 | Antique Mauve-VY LT |
| ⋯ | 452 | Shell Gray-MD | 648 | Beaver Gray-LT |
| ⌘ | 318 | Steel Gray-LT | 452 | Shell Gray-MD |
| L | 3770 | Tawny-VY LT | 819 | Baby Pink-LT |
| ⊕ | 927 | Gray Green-LT | 407 | Desert Sand-DK |
| :: | 828 | Blue-UL VY LT | 747 | Sky Blue-VY LT |
| ∅ | 3811 | Turquoise-VY LT | 415 | Pearl Gray |
| III | 3041 | Antique Violet-MD | 535 | Ash Gray-VY LT |
| ‡ | 451 | Shell Gray-DK | 3860 | Cocoa |
| ⋯ | 3024 | Brown Gray-VY LT | 369 | Pistachio Green-VY LT |
| 4 | 928 | Gray Green-VY LT | 964 | Sea Green-LT |
| ∩ | 932 | Antique Blue-LT | 964 | Sea Green-LT |
| ⊕ | 924 | Gray Green--VY DK | 535 | Ash Gray-VY LT |
| ↓ | 924 | Gray Green--VY DK | 502 | Blue Green |
| ⌘ | 3045 | Yellow Beige-DK | 642 | Beige Gray-DK |
| ⌘ | 3052 | Green Gray-MD | 502 | Blue Green |
| ⊕ | 356 | Terra Cotta-MD | 3350 | Dusty Rose-UL DK |
| o | 3712 | Salmon-MD | 356 | Terra Cotta-MD |
| 6 | 3854 | Autumn Gold-MD | 3855 | Autumn Gold-LT |
| o | 722 | Orange Spice-LT | 3855 | Autumn Gold-LT |
| ⌘ | 3726 | Antique Mauve-DK | 356 | Terra Cotta-MD |
| ⊕ | 3832 | Raspberry-MD | 3350 | Dusty Rose-UL DK |
| i | 3766 | Peacock Blue-LT | 964 | Sea Green-LT |

This table specifies how much thread of each color is required to stitch this pattern. It is good to know that one complete DMC skein contains 313 inches (795 cm) thread.

| DMC | Name | Usage (cm) | Usage (inch) | Usage (cm) | Usage (inch) | Usage (cm) | Usage (inch) |
|------|-----------------------|------------|--------------|------------|--------------|------------|--------------|
| | | 14 | | 16 | | 18 | |
| 223 | Shell Pink-LT | 436 | 171 | 415 | 163 | 373 | 146 |
| 224 | Shell Pink-VY LT | 1171 | 461 | 1115 | 438 | 1004 | 395 |
| 317 | Pewter Gray | 301 | 118 | 286 | 112 | 258 | 101 |
| 318 | Steel Gray-LT | 491 | 193 | 467 | 183 | 420 | 165 |
| 334 | Baby Blue-MD | 7 | 2 | 6 | 2 | 6 | 2 |
| 356 | Terra Cotta-MD | 180 | 70 | 172 | 67 | 154 | 60 |
| 369 | Pistachio Green-VY LT | 251 | 98 | 239 | 94 | 215 | 84 |
| 402 | Mahogany-VY LT | 332 | 130 | 316 | 124 | 285 | 112 |
| 407 | Desert Sand-DK | 1529 | 601 | 1456 | 573 | 1310 | 515 |
| 414 | Steel Gray-DK | 1206 | 474 | 1149 | 452 | 1034 | 407 |
| 415 | Pearl Gray | 1223 | 481 | 1165 | 458 | 1049 | 412 |
| 422 | Hazelnut Brown-LT | 486 | 191 | 463 | 182 | 417 | 164 |
| 451 | Shell Gray-DK | 728 | 286 | 693 | 272 | 624 | 245 |
| 452 | Shell Gray-MD | 1989 | 783 | 1894 | 745 | 1705 | 671 |
| 501 | Blue Green-DK | 29 | 11 | 28 | 11 | 25 | 9 |
| 502 | Blue Green | 130 | 51 | 124 | 48 | 111 | 43 |
| 503 | Blue Green-MD | 164 | 64 | 156 | 61 | 140 | 55 |
| 523 | Fern Green-LT | 71 | 27 | 68 | 26 | 61 | 24 |
| 535 | Ash Gray-VY LT | 431 | 169 | 410 | 161 | 369 | 145 |
| 543 | Beige Brown-UL VY LT | 10018 | 3944 | 9541 | 3756 | 8586 | 3380 |
| 642 | Beige Gray-DK | 173 | 68 | 165 | 64 | 148 | 58 |
| 645 | Beaver Gray-VY DK | 357 | 140 | 340 | 133 | 306 | 120 |
| 646 | Beaver Gray-DK | 180 | 70 | 171 | 67 | 154 | 60 |
| 647 | Beaver Gray-MD | 569 | 224 | 542 | 213 | 488 | 192 |
| 648 | Beaver Gray-LT | 3350 | 1318 | 3191 | 1256 | 2872 | 1130 |
| 712 | Cream | 3909 | 1538 | 3722 | 1465 | 3350 | 1318 |
| 722 | Orange Spice-LT | 281 | 110 | 267 | 105 | 241 | 94 |
| 729 | Old Gold-MD | 17 | 6 | 16 | 6 | 15 | 5 |
| 738 | Tan-VY LT | 1967 | 774 | 1873 | 737 | 1686 | 663 |
| 739 | Tan-UL VY LT | 701 | 275 | 667 | 262 | 601 | 236 |
| 747 | Sky Blue-VY LT | 872 | 343 | 830 | 326 | 747 | 294 |
| 754 | Peach-LT | 1663 | 654 | 1584 | 623 | 1426 | 561 |
| 758 | Terra Cotta-VY LT | 1101 | 433 | 1048 | 412 | 943 | 371 |
| 778 | Antique Mauve-VY LT | 1091 | 429 | 1039 | 409 | 935 | 368 |
| 793 | Cornflower Blue-MD | 31 | 12 | 30 | 11 | 27 | 10 |
| 806 | Peacock Blue-DK | 5 | 1 | 5 | 1 | 5 | 1 |
| 819 | Baby Pink-LT | 10560 | 4157 | 10057 | 3959 | 9051 | 3563 |
| 828 | Blue-UL VY LT | 876 | 344 | 834 | 328 | 751 | 295 |
| 924 | Gray Green--VY DK | 97 | 38 | 92 | 36 | 83 | 32 |
| 926 | Gray Green-MD | 215 | 84 | 205 | 80 | 184 | 72 |
| 927 | Gray Green-LT | 1447 | 569 | 1378 | 542 | 1240 | 488 |
| 928 | Gray Green-VY LT | 1679 | 661 | 1599 | 629 | 1439 | 566 |
| 930 | Antique Blue-DK | 81 | 31 | 77 | 30 | 70 | 27 |
| 931 | Antique Blue-MD | 81 | 31 | 77 | 30 | 69 | 27 |
| 932 | Antique Blue-LT | 324 | 127 | 308 | 121 | 278 | 109 |
| 945 | Tawny | 1067 | 420 | 1016 | 400 | 915 | 360 |
| 948 | Peach-VY LT | 8111 | 3193 | 7724 | 3040 | 6952 | 2737 |
| 950 | Desert Sand-LT | 9225 | 3631 | 8785 | 3458 | 7907 | 3112 |
| 951 | Tawny-LT | 3506 | 1380 | 3339 | 1314 | 3005 | 1183 |
| 964 | Sea Green-LT | 296 | 116 | 282 | 111 | 254 | 100 |
| 977 | Golden Brown-LT | 174 | 68 | 166 | 65 | 149 | 58 |
| 3013 | Khaki Green-LT | 153 | 60 | 146 | 57 | 131 | 51 |
| 3024 | Brown Gray-VY LT | 4840 | 1905 | 4609 | 1814 | 4148 | 1633 |
| 3032 | Mocha Brown-MD | 623 | 245 | 593 | 233 | 534 | 210 |

Copyright (c) 2004-, Golden Kite (Golden K.)

Internet: www.goldenkite.com

e-mail: info@goldenkite.com

| | | | | | | | |
|------|----------------------|-------|------|-------|------|-------|------|
| 3041 | Antique Violet-MD | 599 | 235 | 570 | 224 | 513 | 201 |
| 3045 | Yellow Beige-DK | 49 | 19 | 47 | 18 | 42 | 16 |
| 3052 | Green Gray-MD | 106 | 41 | 101 | 39 | 90 | 35 |
| 3064 | Desert Sand | 978 | 385 | 931 | 366 | 838 | 329 |
| 3072 | Beaver Gray-VY LT | 4234 | 1666 | 4032 | 1587 | 3629 | 1428 |
| 3350 | Dusty Rose-UL DK | 27 | 10 | 26 | 10 | 23 | 9 |
| 3712 | Salmon-MD | 45 | 17 | 43 | 16 | 38 | 14 |
| 3726 | Antique Mauve-DK | 165 | 64 | 157 | 61 | 141 | 55 |
| 3740 | Antique Violet-DK | 207 | 81 | 198 | 77 | 178 | 70 |
| 3756 | Baby Blue-UL VY LT | 4263 | 1678 | 4060 | 1598 | 3654 | 1438 |
| 3766 | Peacock Blue-LT | 13 | 5 | 13 | 5 | 11 | 4 |
| 3768 | Gray Green-DK | 191 | 75 | 182 | 71 | 164 | 64 |
| 3770 | Tawny-VY LT | 7195 | 2832 | 6853 | 2698 | 6167 | 2427 |
| 3772 | Desert Sand-VY DK | 334 | 131 | 318 | 125 | 286 | 112 |
| 3773 | Desert Sand-MD | 3804 | 1497 | 3623 | 1426 | 3261 | 1283 |
| 3778 | Terra Cotta-LT | 492 | 193 | 469 | 184 | 422 | 166 |
| 3787 | Brown Gray-DK | 106 | 41 | 101 | 39 | 90 | 35 |
| 3811 | Turquoise-VY LT | 792 | 311 | 754 | 296 | 679 | 267 |
| 3825 | Pumpkin-Pale | 288 | 113 | 274 | 107 | 247 | 97 |
| 3827 | Golden Brown-Pale | 403 | 158 | 384 | 151 | 345 | 135 |
| 3832 | Raspberry-MD | 33 | 12 | 32 | 12 | 28 | 11 |
| 3834 | Grape-DK | 154 | 60 | 147 | 57 | 132 | 51 |
| 3854 | Autumn Gold-MD | 450 | 177 | 428 | 168 | 385 | 151 |
| 3855 | Autumn Gold-LT | 938 | 369 | 893 | 351 | 804 | 316 |
| 3856 | Mahogany-UL VY LT | 634 | 249 | 604 | 237 | 544 | 214 |
| 3860 | Cocoa | 684 | 269 | 651 | 256 | 586 | 230 |
| 3861 | Cocoa-LT | 719 | 283 | 685 | 269 | 616 | 242 |
| 3864 | Mocha Beige-LT | 3404 | 1340 | 3241 | 1275 | 2917 | 1148 |
| 3865 | Winter White | 6568 | 2585 | 6256 | 2462 | 5630 | 2216 |
| 3866 | Mocha Brown-UL VY LT | 12515 | 4927 | 11919 | 4692 | 10727 | 4223 |
| ecru | Ecru | 4666 | 1837 | 4444 | 1749 | 3999 | 1574 |

| Extended thread usage table. | | | | | | | |
|------------------------------|-----------------------|------------|--------------|------------|--------------|------------|--------------|
| DMC | Name | Usage (cm) | Usage (inch) | Usage (cm) | Usage (inch) | Usage (cm) | Usage (inch) |
| | | 10 | | 12 | | 24 | |
| 223 | Shell Pink-LT | 671 | 263 | 560 | 219 | 280 | 110 |
| 224 | Shell Pink-VY LT | 1807 | 711 | 1506 | 593 | 753 | 296 |
| 317 | Pewter Gray | 464 | 182 | 387 | 152 | 194 | 76 |
| 318 | Steel Gray-LT | 756 | 297 | 630 | 248 | 315 | 124 |
| 334 | Baby Blue-MD | 11 | 4 | 9 | 3 | 5 | 2 |
| 356 | Terra Cotta-MD | 277 | 108 | 231 | 90 | 116 | 45 |
| 369 | Pistachio Green-VY LT | 387 | 151 | 323 | 126 | 161 | 63 |
| 402 | Mahogany-VY LT | 513 | 202 | 428 | 168 | 214 | 84 |
| 407 | Desert Sand-DK | 2358 | 927 | 1965 | 773 | 983 | 386 |
| 414 | Steel Gray-DK | 1861 | 733 | 1551 | 611 | 776 | 305 |
| 415 | Pearl Gray | 1888 | 742 | 1574 | 618 | 787 | 309 |
| 422 | Hazelnut Brown-LT | 751 | 295 | 626 | 246 | 313 | 123 |
| 451 | Shell Gray-DK | 1123 | 441 | 936 | 368 | 468 | 184 |
| 452 | Shell Gray-MD | 3069 | 1208 | 2558 | 1007 | 1279 | 503 |
| 501 | Blue Green-DK | 45 | 16 | 38 | 14 | 19 | 7 |
| 502 | Blue Green | 200 | 77 | 167 | 65 | 83 | 32 |
| 503 | Blue Green-MD | 252 | 99 | 210 | 83 | 105 | 41 |
| 523 | Fern Green-LT | 110 | 43 | 92 | 36 | 46 | 18 |
| 535 | Ash Gray-VY LT | 664 | 261 | 554 | 218 | 277 | 109 |
| 543 | Beige Brown-UL VY LT | 15455 | 6084 | 12879 | 5070 | 6440 | 2535 |
| 642 | Beige Gray-DK | 266 | 104 | 222 | 87 | 111 | 44 |

| | | | | | | | |
|------|---------------------|-------|------|-------|------|------|------|
| 645 | Beaver Gray-VY DK | 551 | 216 | 459 | 180 | 230 | 90 |
| 646 | Beaver Gray-DK | 277 | 108 | 231 | 90 | 116 | 45 |
| 647 | Beaver Gray-MD | 878 | 346 | 732 | 288 | 366 | 144 |
| 648 | Beaver Gray-LT | 5170 | 2034 | 4308 | 1695 | 2154 | 848 |
| 712 | Cream | 6030 | 2372 | 5025 | 1977 | 2513 | 989 |
| 722 | Orange Spice-LT | 434 | 169 | 362 | 141 | 181 | 71 |
| 729 | Old Gold-MD | 27 | 9 | 23 | 8 | 11 | 4 |
| 738 | Tan-VY LT | 3035 | 1193 | 2529 | 995 | 1265 | 497 |
| 739 | Tan-UL VY LT | 1082 | 425 | 902 | 354 | 451 | 177 |
| 747 | Sky Blue-VY LT | 1345 | 529 | 1121 | 441 | 560 | 221 |
| 754 | Peach-LT | 2567 | 1010 | 2139 | 842 | 1070 | 421 |
| 758 | Terra Cotta-VY LT | 1697 | 668 | 1415 | 557 | 707 | 278 |
| 778 | Antique Mauve-VY LT | 1683 | 662 | 1403 | 552 | 701 | 276 |
| 793 | Cornflower Blue-MD | 49 | 18 | 41 | 15 | 20 | 8 |
| 806 | Peacock Blue-DK | 9 | 2 | 8 | 2 | 4 | 1 |
| 819 | Baby Pink-LT | 16292 | 6413 | 13577 | 5345 | 6788 | 2672 |
| 828 | Blue-UL VY LT | 1352 | 531 | 1127 | 443 | 563 | 221 |
| 924 | Gray Green--VY DK | 149 | 58 | 125 | 48 | 62 | 24 |
| 926 | Gray Green-MD | 331 | 130 | 276 | 108 | 138 | 54 |
| 927 | Gray Green-LT | 2232 | 878 | 1860 | 732 | 930 | 366 |
| 928 | Gray Green-VY LT | 2590 | 1019 | 2159 | 849 | 1079 | 425 |
| 930 | Antique Blue-DK | 126 | 49 | 105 | 41 | 53 | 20 |
| 931 | Antique Blue-MD | 124 | 49 | 104 | 41 | 52 | 20 |
| 932 | Antique Blue-LT | 500 | 196 | 417 | 164 | 209 | 82 |
| 945 | Tawny | 1647 | 648 | 1373 | 540 | 686 | 270 |
| 948 | Peach-VY LT | 12514 | 4927 | 10428 | 4106 | 5214 | 2053 |
| 950 | Desert Sand-LT | 14233 | 5602 | 11861 | 4668 | 5930 | 2334 |
| 951 | Tawny-LT | 5409 | 2129 | 4508 | 1775 | 2254 | 887 |
| 964 | Sea Green-LT | 457 | 180 | 381 | 150 | 191 | 75 |
| 977 | Golden Brown-LT | 268 | 104 | 224 | 87 | 112 | 44 |
| 3013 | Khaki Green-LT | 236 | 92 | 197 | 77 | 98 | 38 |
| 3024 | Brown Gray-VY LT | 7466 | 2939 | 6222 | 2450 | 3111 | 1225 |
| 3032 | Mocha Brown-MD | 961 | 378 | 801 | 315 | 401 | 158 |
| 3041 | Antique Violet-MD | 923 | 362 | 770 | 302 | 385 | 151 |
| 3045 | Yellow Beige-DK | 76 | 29 | 63 | 24 | 32 | 12 |
| 3052 | Green Gray-MD | 162 | 63 | 135 | 53 | 68 | 26 |
| 3064 | Desert Sand | 1508 | 592 | 1257 | 494 | 629 | 247 |
| 3072 | Beaver Gray-VY LT | 6532 | 2570 | 5444 | 2142 | 2722 | 1071 |
| 3350 | Dusty Rose-UL DK | 41 | 16 | 35 | 14 | 17 | 7 |
| 3712 | Salmon-MD | 68 | 25 | 57 | 21 | 29 | 11 |
| 3726 | Antique Mauve-DK | 254 | 99 | 212 | 83 | 106 | 41 |
| 3740 | Antique Violet-DK | 320 | 126 | 267 | 105 | 134 | 53 |
| 3756 | Baby Blue-UL VY LT | 6577 | 2588 | 5481 | 2157 | 2741 | 1079 |
| 3766 | Peacock Blue-LT | 20 | 7 | 17 | 6 | 8 | 3 |
| 3768 | Gray Green-DK | 295 | 115 | 246 | 96 | 123 | 48 |
| 3770 | Tawny-VY LT | 11101 | 4369 | 9251 | 3641 | 4625 | 1820 |
| 3772 | Desert Sand-VY DK | 515 | 202 | 429 | 168 | 215 | 84 |
| 3773 | Desert Sand-MD | 5870 | 2309 | 4892 | 1925 | 2446 | 962 |
| 3778 | Terra Cotta-LT | 760 | 299 | 633 | 249 | 317 | 125 |
| 3787 | Brown Gray-DK | 162 | 63 | 135 | 53 | 68 | 26 |
| 3811 | Turquoise-VY LT | 1222 | 481 | 1019 | 401 | 509 | 200 |
| 3825 | Pumpkin-Pale | 445 | 175 | 371 | 146 | 185 | 73 |
| 3827 | Golden Brown-Pale | 621 | 243 | 518 | 203 | 259 | 101 |
| 3832 | Raspberry-MD | 50 | 20 | 42 | 17 | 21 | 8 |
| 3834 | Grape-DK | 238 | 92 | 198 | 77 | 99 | 38 |
| 3854 | Autumn Gold-MD | 693 | 272 | 578 | 227 | 289 | 113 |
| 3855 | Autumn Gold-LT | 1447 | 569 | 1206 | 474 | 603 | 237 |
| 3856 | Mahogany-UL VY LT | 979 | 385 | 816 | 321 | 408 | 161 |
| 3860 | Cocoa | 1055 | 414 | 879 | 345 | 440 | 173 |

Copyright (c) 2004-, Golden Kite (Golden K.)

Internet: www.goldenkite.com

e-mail: info@goldenkite.com

| | | | | | | | |
|------|----------------------|-------|------|-------|------|------|------|
| 3861 | Cocoa-LT | 1109 | 436 | 924 | 363 | 462 | 182 |
| 3864 | Mocha Beige-LT | 5251 | 2066 | 4376 | 1722 | 2188 | 861 |
| 3865 | Winter White | 10134 | 3989 | 8445 | 3324 | 4223 | 1662 |
| 3866 | Mocha Brown-UL VY LT | 19309 | 7601 | 16091 | 6335 | 8045 | 3167 |
| ecru | Ecru | 7198 | 2833 | 5999 | 2361 | 2999 | 1181 |

| Extended thread usage table. | | | | | | | |
|------------------------------|-----------------------|------------|--------------|------------|--------------|------------|--------------|
| DMC | Name | Usage (cm) | Usage (inch) | Usage (cm) | Usage (inch) | Usage (cm) | Usage (inch) |
| | | 25 | | 26 | | 27 | |
| 223 | Shell Pink-LT | 269 | 105 | 258 | 101 | 249 | 97 |
| 224 | Shell Pink-VY LT | 723 | 284 | 695 | 273 | 669 | 263 |
| 317 | Pewter Gray | 186 | 73 | 179 | 70 | 172 | 67 |
| 318 | Steel Gray-LT | 302 | 119 | 291 | 114 | 280 | 110 |
| 334 | Baby Blue-MD | 4 | 1 | 4 | 1 | 4 | 1 |
| 356 | Terra Cotta-MD | 111 | 43 | 107 | 42 | 103 | 40 |
| 369 | Pistachio Green-VY LT | 155 | 60 | 149 | 58 | 143 | 56 |
| 402 | Mahogany-VY LT | 205 | 81 | 197 | 78 | 190 | 75 |
| 407 | Desert Sand-DK | 943 | 371 | 907 | 357 | 873 | 343 |
| 414 | Steel Gray-DK | 744 | 293 | 716 | 282 | 689 | 271 |
| 415 | Pearl Gray | 755 | 297 | 726 | 285 | 699 | 275 |
| 422 | Hazelnut Brown-LT | 300 | 118 | 289 | 114 | 278 | 109 |
| 451 | Shell Gray-DK | 449 | 176 | 432 | 170 | 416 | 163 |
| 452 | Shell Gray-MD | 1228 | 483 | 1180 | 465 | 1137 | 447 |
| 501 | Blue Green-DK | 18 | 6 | 17 | 6 | 17 | 6 |
| 502 | Blue Green | 80 | 31 | 77 | 30 | 74 | 29 |
| 503 | Blue Green-MD | 101 | 40 | 97 | 38 | 93 | 37 |
| 523 | Fern Green-LT | 44 | 17 | 42 | 17 | 41 | 16 |
| 535 | Ash Gray-VY LT | 266 | 104 | 255 | 100 | 246 | 97 |
| 543 | Beige Brown-UL VY LT | 6182 | 2434 | 5944 | 2340 | 5724 | 2253 |
| 642 | Beige Gray-DK | 107 | 42 | 102 | 40 | 99 | 39 |
| 645 | Beaver Gray-VY DK | 220 | 86 | 212 | 83 | 204 | 80 |
| 646 | Beaver Gray-DK | 111 | 43 | 107 | 42 | 103 | 40 |
| 647 | Beaver Gray-MD | 351 | 138 | 338 | 133 | 325 | 128 |
| 648 | Beaver Gray-LT | 2068 | 814 | 1988 | 782 | 1915 | 753 |
| 712 | Cream | 2412 | 949 | 2319 | 912 | 2233 | 879 |
| 722 | Orange Spice-LT | 174 | 68 | 167 | 65 | 161 | 63 |
| 729 | Old Gold-MD | 11 | 4 | 10 | 3 | 10 | 3 |
| 738 | Tan-VY LT | 1214 | 477 | 1167 | 459 | 1124 | 442 |
| 739 | Tan-UL VY LT | 433 | 170 | 416 | 163 | 401 | 157 |
| 747 | Sky Blue-VY LT | 538 | 212 | 517 | 204 | 498 | 196 |
| 754 | Peach-LT | 1027 | 404 | 987 | 388 | 951 | 374 |
| 758 | Terra Cotta-VY LT | 679 | 267 | 653 | 257 | 629 | 247 |
| 778 | Antique Mauve-VY LT | 673 | 265 | 647 | 255 | 623 | 245 |
| 793 | Cornflower Blue-MD | 19 | 7 | 19 | 7 | 18 | 7 |
| 806 | Peacock Blue-DK | 4 | 1 | 3 | 1 | 3 | 1 |
| 819 | Baby Pink-LT | 6517 | 2565 | 6266 | 2467 | 6034 | 2375 |
| 828 | Blue-UL VY LT | 541 | 212 | 520 | 204 | 501 | 197 |
| 924 | Gray Green--VY DK | 60 | 23 | 57 | 22 | 55 | 21 |
| 926 | Gray Green-MD | 132 | 52 | 127 | 50 | 123 | 48 |
| 927 | Gray Green-LT | 893 | 351 | 858 | 338 | 827 | 325 |
| 928 | Gray Green-VY LT | 1036 | 408 | 996 | 392 | 959 | 377 |
| 930 | Antique Blue-DK | 50 | 19 | 48 | 19 | 47 | 18 |
| 931 | Antique Blue-MD | 50 | 19 | 48 | 19 | 46 | 18 |
| 932 | Antique Blue-LT | 200 | 78 | 192 | 75 | 185 | 73 |
| 945 | Tawny | 659 | 259 | 633 | 249 | 610 | 240 |
| 948 | Peach-VY LT | 5005 | 1971 | 4813 | 1895 | 4635 | 1825 |

| | | | | | | | |
|------|----------------------|------|------|------|------|------|------|
| 950 | Desert Sand-LT | 5693 | 2241 | 5474 | 2154 | 5271 | 2075 |
| 951 | Tawny-LT | 2164 | 852 | 2080 | 819 | 2003 | 789 |
| 964 | Sea Green-LT | 183 | 72 | 176 | 69 | 169 | 67 |
| 977 | Golden Brown-LT | 107 | 42 | 103 | 40 | 99 | 39 |
| 3013 | Khaki Green-LT | 94 | 37 | 91 | 35 | 87 | 34 |
| 3024 | Brown Gray-VY LT | 2987 | 1176 | 2872 | 1131 | 2765 | 1089 |
| 3032 | Mocha Brown-MD | 384 | 151 | 370 | 145 | 356 | 140 |
| 3041 | Antique Violet-MD | 369 | 145 | 355 | 139 | 342 | 134 |
| 3045 | Yellow Beige-DK | 30 | 12 | 29 | 11 | 28 | 11 |
| 3052 | Green Gray-MD | 65 | 25 | 62 | 24 | 60 | 23 |
| 3064 | Desert Sand | 603 | 237 | 580 | 228 | 559 | 219 |
| 3072 | Beaver Gray-VY LT | 2613 | 1028 | 2512 | 989 | 2419 | 952 |
| 3350 | Dusty Rose-UL DK | 17 | 6 | 16 | 6 | 15 | 6 |
| 3712 | Salmon-MD | 27 | 10 | 26 | 10 | 25 | 9 |
| 3726 | Antique Mauve-DK | 102 | 40 | 98 | 38 | 94 | 37 |
| 3740 | Antique Violet-DK | 128 | 50 | 123 | 48 | 119 | 47 |
| 3756 | Baby Blue-UL VY LT | 2631 | 1035 | 2530 | 996 | 2436 | 959 |
| 3766 | Peacock Blue-LT | 8 | 3 | 8 | 3 | 7 | 3 |
| 3768 | Gray Green-DK | 118 | 46 | 114 | 44 | 109 | 43 |
| 3770 | Tawny-VY LT | 4440 | 1747 | 4269 | 1680 | 4111 | 1618 |
| 3772 | Desert Sand-VY DK | 206 | 81 | 198 | 78 | 191 | 75 |
| 3773 | Desert Sand-MD | 2348 | 924 | 2258 | 888 | 2174 | 855 |
| 3778 | Terra Cotta-LT | 304 | 120 | 292 | 115 | 281 | 111 |
| 3787 | Brown Gray-DK | 65 | 25 | 62 | 24 | 60 | 23 |
| 3811 | Turquoise-VY LT | 489 | 192 | 470 | 185 | 453 | 178 |
| 3825 | Pumpkin-Pale | 178 | 70 | 171 | 67 | 165 | 65 |
| 3827 | Golden Brown-Pale | 248 | 97 | 239 | 93 | 230 | 90 |
| 3832 | Raspberry-MD | 20 | 8 | 19 | 8 | 19 | 7 |
| 3834 | Grape-DK | 95 | 37 | 91 | 35 | 88 | 34 |
| 3854 | Autumn Gold-MD | 277 | 109 | 267 | 105 | 257 | 101 |
| 3855 | Autumn Gold-LT | 579 | 228 | 557 | 219 | 536 | 211 |
| 3856 | Mahogany-UL VY LT | 392 | 154 | 377 | 148 | 363 | 143 |
| 3860 | Cocoa | 422 | 166 | 406 | 159 | 391 | 153 |
| 3861 | Cocoa-LT | 444 | 174 | 426 | 168 | 411 | 161 |
| 3864 | Mocha Beige-LT | 2100 | 827 | 2019 | 795 | 1945 | 765 |
| 3865 | Winter White | 4054 | 1596 | 3898 | 1534 | 3753 | 1477 |
| 3866 | Mocha Brown-UL VY LT | 7723 | 3041 | 7426 | 2924 | 7151 | 2815 |
| ecru | Ecu | 2879 | 1133 | 2769 | 1090 | 2666 | 1049 |

| Extended thread usage table. | | | | | | | |
|------------------------------|-----------------------|------------|--------------|------------|--------------|------------|--------------|
| DMC | Name | Usage (cm) | Usage (inch) | Usage (cm) | Usage (inch) | Usage (cm) | Usage (inch) |
| | | 28 | | 30 | | 32 | |
| 223 | Shell Pink-LT | 240 | 94 | 224 | 88 | 210 | 82 |
| 224 | Shell Pink-VY LT | 645 | 254 | 602 | 237 | 565 | 222 |
| 317 | Pewter Gray | 166 | 65 | 155 | 61 | 145 | 57 |
| 318 | Steel Gray-LT | 270 | 106 | 252 | 99 | 236 | 93 |
| 334 | Baby Blue-MD | 4 | 1 | 4 | 1 | 3 | 1 |
| 356 | Terra Cotta-MD | 99 | 39 | 92 | 36 | 87 | 34 |
| 369 | Pistachio Green-VY LT | 138 | 54 | 129 | 50 | 121 | 47 |
| 402 | Mahogany-VY LT | 183 | 72 | 171 | 67 | 160 | 63 |
| 407 | Desert Sand-DK | 842 | 331 | 786 | 309 | 737 | 290 |
| 414 | Steel Gray-DK | 665 | 262 | 620 | 244 | 582 | 229 |
| 415 | Pearl Gray | 674 | 265 | 629 | 247 | 590 | 232 |
| 422 | Hazelnut Brown-LT | 268 | 105 | 250 | 98 | 235 | 92 |
| 451 | Shell Gray-DK | 401 | 158 | 374 | 147 | 351 | 138 |
| 452 | Shell Gray-MD | 1096 | 431 | 1023 | 403 | 959 | 377 |
| 501 | Blue Green-DK | 16 | 6 | 15 | 5 | 14 | 5 |

Copyright (c) 2004-, Golden Kite (Golden K.)

Internet: www.goldenkite.com

e-mail: info@goldenkite.com

| | | | | | | | |
|------|----------------------|------|------|------|------|------|------|
| 502 | Blue Green | 71 | 28 | 67 | 26 | 62 | 24 |
| 503 | Blue Green-MD | 90 | 35 | 84 | 33 | 79 | 31 |
| 523 | Fern Green-LT | 39 | 15 | 37 | 14 | 34 | 14 |
| 535 | Ash Gray-VY LT | 237 | 93 | 221 | 87 | 208 | 82 |
| 543 | Beige Brown-UL VY LT | 5520 | 2173 | 5152 | 2028 | 4830 | 1901 |
| 642 | Beige Gray-DK | 95 | 37 | 89 | 35 | 83 | 33 |
| 645 | Beaver Gray-VY DK | 197 | 77 | 184 | 72 | 172 | 68 |
| 646 | Beaver Gray-DK | 99 | 39 | 92 | 36 | 87 | 34 |
| 647 | Beaver Gray-MD | 314 | 123 | 293 | 115 | 275 | 108 |
| 648 | Beaver Gray-LT | 1846 | 726 | 1723 | 678 | 1616 | 636 |
| 712 | Cream | 2154 | 847 | 2010 | 791 | 1884 | 741 |
| 722 | Orange Spice-LT | 155 | 60 | 145 | 56 | 136 | 53 |
| 729 | Old Gold-MD | 10 | 3 | 9 | 3 | 8 | 3 |
| 738 | Tan-VY LT | 1084 | 426 | 1012 | 398 | 948 | 373 |
| 739 | Tan-UL VY LT | 386 | 152 | 361 | 142 | 338 | 133 |
| 747 | Sky Blue-VY LT | 480 | 189 | 448 | 176 | 420 | 165 |
| 754 | Peach-LT | 917 | 361 | 856 | 337 | 802 | 316 |
| 758 | Terra Cotta-VY LT | 606 | 239 | 566 | 223 | 530 | 209 |
| 778 | Antique Mauve-VY LT | 601 | 237 | 561 | 221 | 526 | 207 |
| 793 | Cornflower Blue-MD | 17 | 6 | 16 | 6 | 15 | 6 |
| 806 | Peacock Blue-DK | 3 | 1 | 3 | 1 | 3 | 1 |
| 819 | Baby Pink-LT | 5819 | 2291 | 5431 | 2138 | 5091 | 2004 |
| 828 | Blue-UL VY LT | 483 | 190 | 451 | 177 | 422 | 166 |
| 924 | Gray Green--VY DK | 53 | 21 | 50 | 19 | 47 | 18 |
| 926 | Gray Green-MD | 118 | 46 | 110 | 43 | 104 | 41 |
| 927 | Gray Green-LT | 797 | 314 | 744 | 293 | 698 | 275 |
| 928 | Gray Green-VY LT | 925 | 364 | 863 | 340 | 809 | 318 |
| 930 | Antique Blue-DK | 45 | 17 | 42 | 16 | 39 | 15 |
| 931 | Antique Blue-MD | 44 | 17 | 41 | 16 | 39 | 15 |
| 932 | Antique Blue-LT | 179 | 70 | 167 | 65 | 156 | 61 |
| 945 | Tawny | 588 | 231 | 549 | 216 | 515 | 203 |
| 948 | Peach-VY LT | 4469 | 1760 | 4171 | 1642 | 3911 | 1540 |
| 950 | Desert Sand-LT | 5083 | 2001 | 4744 | 1867 | 4448 | 1751 |
| 951 | Tawny-LT | 1932 | 761 | 1803 | 710 | 1690 | 665 |
| 964 | Sea Green-LT | 163 | 64 | 152 | 60 | 143 | 56 |
| 977 | Golden Brown-LT | 96 | 37 | 89 | 35 | 84 | 33 |
| 3013 | Khaki Green-LT | 84 | 33 | 79 | 31 | 74 | 29 |
| 3024 | Brown Gray-VY LT | 2667 | 1050 | 2489 | 980 | 2333 | 919 |
| 3032 | Mocha Brown-MD | 343 | 135 | 320 | 126 | 300 | 118 |
| 3041 | Antique Violet-MD | 330 | 129 | 308 | 121 | 289 | 113 |
| 3045 | Yellow Beige-DK | 27 | 10 | 25 | 10 | 24 | 9 |
| 3052 | Green Gray-MD | 58 | 23 | 54 | 21 | 51 | 20 |
| 3064 | Desert Sand | 539 | 212 | 503 | 197 | 471 | 185 |
| 3072 | Beaver Gray-VY LT | 2333 | 918 | 2177 | 857 | 2041 | 803 |
| 3350 | Dusty Rose-UL DK | 15 | 6 | 14 | 5 | 13 | 5 |
| 3712 | Salmon-MD | 24 | 9 | 23 | 8 | 21 | 8 |
| 3726 | Antique Mauve-DK | 91 | 35 | 85 | 33 | 79 | 31 |
| 3740 | Antique Violet-DK | 114 | 45 | 107 | 42 | 100 | 39 |
| 3756 | Baby Blue-UL VY LT | 2349 | 924 | 2192 | 863 | 2055 | 809 |
| 3766 | Peacock Blue-LT | 7 | 3 | 7 | 2 | 6 | 2 |
| 3768 | Gray Green-DK | 105 | 41 | 98 | 38 | 92 | 36 |
| 3770 | Tawny-VY LT | 3965 | 1560 | 3700 | 1456 | 3469 | 1365 |
| 3772 | Desert Sand-VY DK | 184 | 72 | 172 | 67 | 161 | 63 |
| 3773 | Desert Sand-MD | 2096 | 825 | 1957 | 770 | 1834 | 722 |
| 3778 | Terra Cotta-LT | 271 | 107 | 253 | 100 | 237 | 93 |
| 3787 | Brown Gray-DK | 58 | 23 | 54 | 21 | 51 | 20 |
| 3811 | Turquoise-VY LT | 437 | 172 | 407 | 160 | 382 | 150 |
| 3825 | Pumpkin-Pale | 159 | 62 | 148 | 58 | 139 | 55 |
| 3827 | Golden Brown-Pale | 222 | 87 | 207 | 81 | 194 | 76 |

Copyright (c) 2004-, Golden Kite (Golden K.)

Internet: www.goldenkite.com

e-mail: info@goldenkite.com

| | | | | | | | |
|------|----------------------|------|------|------|------|------|------|
| 3832 | Raspberry-MD | 18 | 7 | 17 | 7 | 16 | 6 |
| 3834 | Grape-DK | 85 | 33 | 79 | 31 | 74 | 29 |
| 3854 | Autumn Gold-MD | 248 | 97 | 231 | 91 | 217 | 85 |
| 3855 | Autumn Gold-LT | 517 | 203 | 482 | 190 | 452 | 178 |
| 3856 | Mahogany-UL VY LT | 350 | 138 | 326 | 128 | 306 | 120 |
| 3860 | Cocoa | 377 | 148 | 352 | 138 | 330 | 129 |
| 3861 | Cocoa-LT | 396 | 156 | 370 | 145 | 347 | 136 |
| 3864 | Mocha Beige-LT | 1875 | 738 | 1750 | 689 | 1641 | 646 |
| 3865 | Winter White | 3619 | 1425 | 3378 | 1330 | 3167 | 1247 |
| 3866 | Mocha Brown-UL VY LT | 6896 | 2715 | 6436 | 2534 | 6034 | 2375 |
| ecru | Ecru | 2571 | 1012 | 2399 | 944 | 2249 | 885 |

[illegible]

$$(12) \quad \mathcal{L}(\mathcal{A}) = \mathcal{L}(\mathcal{B}) \quad (13)$$

| | 110 | 120 | 130 | 140 | 150 |
|----|-----|-----|-----|-----|-----|
| 10 | 110 | 120 | 130 | 140 | 150 |
| 20 | 20 | 20 | 20 | 20 | 20 |
| 30 | 30 | 30 | 30 | 30 | 30 |
| 40 | 40 | 40 | 40 | 40 | 40 |
| 50 | 50 | 50 | 50 | 50 | 50 |
| 60 | 60 | 60 | 60 | 60 | 60 |
| 70 | 70 | 70 | 70 | 70 | 70 |

$$(14) \quad \frac{d}{dt} \left(\frac{\partial L}{\partial \dot{x}} \right) = \frac{\partial L}{\partial x}$$

$$(15) \quad \frac{1}{\Gamma(\alpha)} \int_0^t (t-s)^{\alpha-1} f(s) ds = \frac{1}{\Gamma(\alpha)} \int_0^t (t-s)^{\alpha-1} g(s) ds + \frac{1}{\Gamma(\alpha)} \int_0^t (t-s)^{\alpha-1} h(s) ds$$

$$(16) \quad \frac{1}{\Gamma(\alpha)} \int_0^t (t-s)^{\alpha-1} f(s) ds = \frac{1}{\Gamma(\alpha)} \int_0^t (t-s)^{\alpha-1} g(s) ds + \frac{1}{\Gamma(\alpha)} \int_0^t (t-s)^{\alpha-1} h(s) ds$$

[illegible]

[illegible]

[illegible]

| | 10 | | | | | | | | | | 20 | | | | | | | | | | 30 | | | | | | | | | | 40 | | | | | | | | | | 50 | | | | | | | | | |
|-----|----|---|---|---|---|---|---|---|---|----|----|----|----|----|----|----|----|----|----|----|----|----|----|----|----|----|----|----|----|----|----|----|----|----|----|----|----|----|----|----|----|----|----|----|----|----|----|----|----|----|
| 80 | 1 | 2 | 3 | 4 | 5 | 6 | 7 | 8 | 9 | 10 | 11 | 12 | 13 | 14 | 15 | 16 | 17 | 18 | 19 | 20 | 21 | 22 | 23 | 24 | 25 | 26 | 27 | 28 | 29 | 30 | 31 | 32 | 33 | 34 | 35 | 36 | 37 | 38 | 39 | 40 | 41 | 42 | 43 | 44 | 45 | 46 | 47 | 48 | 49 | 50 |
| 90 | 1 | 2 | 3 | 4 | 5 | 6 | 7 | 8 | 9 | 10 | 11 | 12 | 13 | 14 | 15 | 16 | 17 | 18 | 19 | 20 | 21 | 22 | 23 | 24 | 25 | 26 | 27 | 28 | 29 | 30 | 31 | 32 | 33 | 34 | 35 | 36 | 37 | 38 | 39 | 40 | 41 | 42 | 43 | 44 | 45 | 46 | 47 | 48 | 49 | 50 |
| 100 | 1 | 2 | 3 | 4 | 5 | 6 | 7 | 8 | 9 | 10 | 11 | 12 | 13 | 14 | 15 | 16 | 17 | 18 | 19 | 20 | 21 | 22 | 23 | 24 | 25 | 26 | 27 | 28 | 29 | 30 | 31 | 32 | 33 | 34 | 35 | 36 | 37 | 38 | 39 | 40 | 41 | 42 | 43 | 44 | 45 | 46 | 47 | 48 | 49 | 50 |
| 110 | 1 | 2 | 3 | 4 | 5 | 6 | 7 | 8 | 9 | 10 | 11 | 12 | 13 | 14 | 15 | 16 | 17 | 18 | 19 | 20 | 21 | 22 | 23 | 24 | 25 | 26 | 27 | 28 | 29 | 30 | 31 | 32 | 33 | 34 | 35 | 36 | 37 | 38 | 39 | 40 | 41 | 42 | 43 | 44 | 45 | 46 | 47 | 48 | 49 | 50 |
| 120 | 1 | 2 | 3 | 4 | 5 | 6 | 7 | 8 | 9 | 10 | 11 | 12 | 13 | 14 | 15 | 16 | 17 | 18 | 19 | 20 | 21 | 22 | 23 | 24 | 25 | 26 | 27 | 28 | 29 | 30 | 31 | 32 | 33 | 34 | 35 | 36 | 37 | 38 | 39 | 40 | 41 | 42 | 43 | 44 | 45 | 46 | 47 | 48 | 49 | 50 |
| 130 | 1 | 2 | 3 | 4 | 5 | 6 | 7 | 8 | 9 | 10 | 11 | 12 | 13 | 14 | 15 | 16 | 17 | 18 | 19 | 20 | 21 | 22 | 23 | 24 | 25 | 26 | 27 | 28 | 29 | 30 | 31 | 32 | 33 | 34 | 35 | 36 | 37 | 38 | 39 | 40 | 41 | 42 | 43 | 44 | 45 | 46 | 47 | 48 | 49 | 50 |
| 140 | 1 | 2 | 3 | 4 | 5 | 6 | 7 | 8 | 9 | 10 | 11 | 12 | 13 | 14 | 15 | 16 | 17 | 18 | 19 | 20 | 21 | 22 | 23 | 24 | 25 | 26 | 27 | 28 | 29 | 30 | 31 | 32 | 33 | 34 | 35 | 36 | 37 | 38 | 39 | 40 | 41 | 42 | 43 | 44 | 45 | 46 | 47 | 48 | 49 | 50 |
| 150 | 1 | 2 | 3 | 4 | 5 | 6 | 7 | 8 | 9 | 10 | 11 | 12 | 13 | 14 | 15 | 16 | 17 | 18 | 19 | 20 | 21 | 22 | 23 | 24 | 25 | 26 | 27 | 28 | 29 | 30 | 31 | 32 | 33 | 34 | 35 | 36 | 37 | 38 | 39 | 40 | 41 | 42 | 43 | 44 | 45 | 46 | 47 | 48 | 49 | 50 |

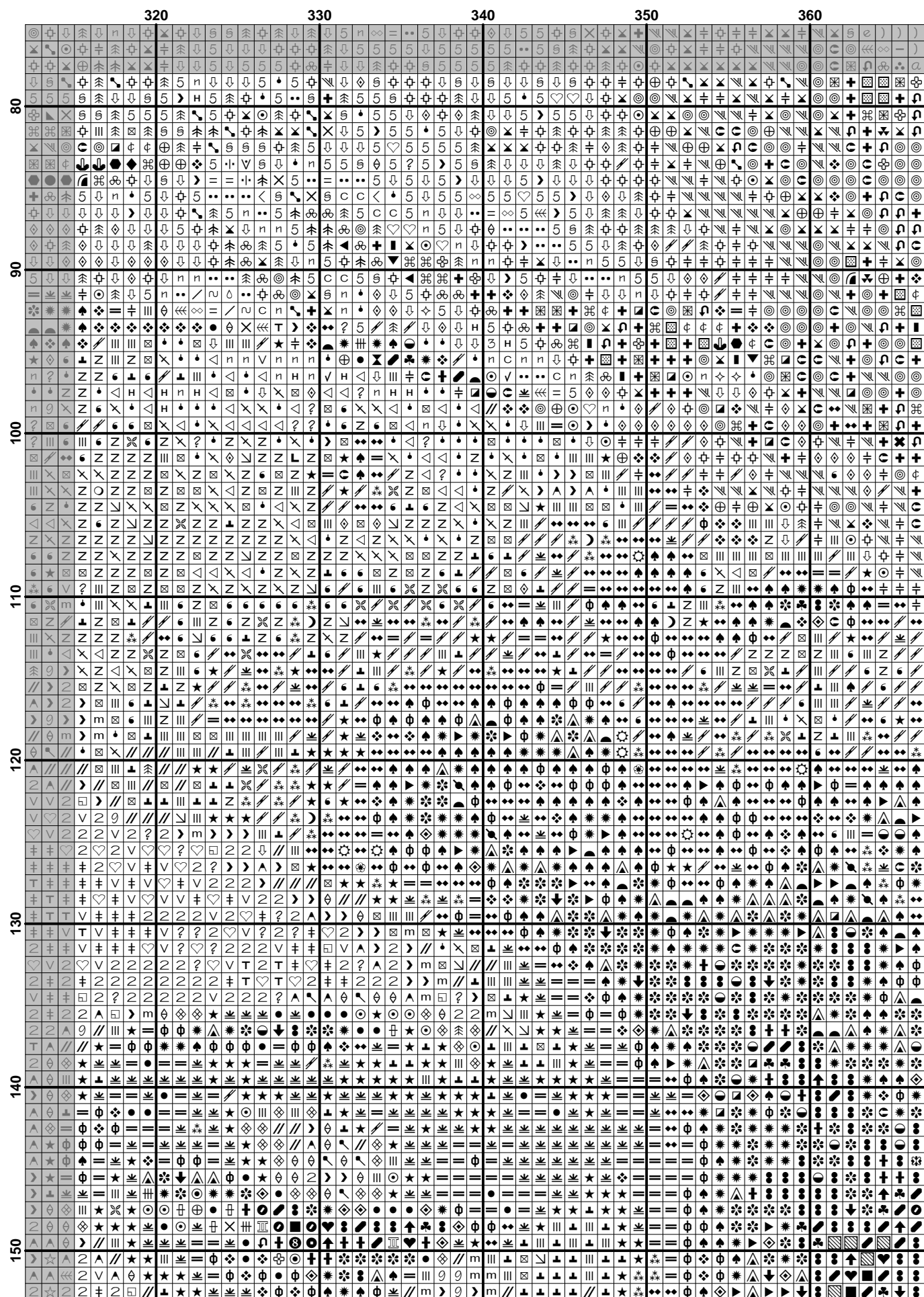
$$(22) \quad \dots \quad (23)$$

[illegible]

$$(24) \quad \mathcal{L}(\mathcal{A}) = \mathcal{L}(\mathcal{B}) \quad (25)$$

[illegible]

| 260 | 270 | 280 | 290 | 300 | 310 |
|-----|-----|-----|-----|-----|-----|
| 80 | 90 | 100 | 110 | 120 | 130 |
| 140 | 150 | | | | |



$$(28) \quad \mathcal{L}(\mathcal{A}) = \mathcal{L}(\mathcal{B}) \quad (29)$$

$$(29) \quad \mathcal{H}^{\text{reg}}_{\text{reg}} = \mathcal{H}^{\text{reg}}_{\text{reg}} \quad (30)$$

(30)

$$(31) \quad \mathcal{L}(\mathcal{A}) = \mathcal{L}(\mathcal{B}) \quad (32)$$

[illegible]

[illegible]

(35)

(36)

$$(36) \quad \mathcal{L}(\mathcal{A}) = \mathcal{L}(\mathcal{B}) \quad (37)$$

$$(37) \quad \frac{1}{\Gamma(\alpha)} \int_0^t (t-s)^{\alpha-1} f(s) ds = \frac{1}{\Gamma(\alpha)} \int_0^t (t-s)^{\alpha-1} f(s) ds + \frac{1}{\Gamma(\alpha)} \int_0^t (t-s)^{\alpha-1} f(s) ds$$

| | 370 | 380 | 390 | 400 | 410 |
|-----|-----|-----|-----|-----|-----|
| 150 | ... | ... | ... | ... | ... |
| 160 | ... | ... | ... | ... | ... |
| 170 | ... | ... | ... | ... | ... |
| 180 | ... | ... | ... | ... | ... |
| 190 | ... | ... | ... | ... | ... |
| 200 | ... | ... | ... | ... | ... |
| 210 | ... | ... | ... | ... | ... |
| 220 | ... | ... | ... | ... | ... |

[illegible]

(40)

$$(41) \quad \frac{1}{\Gamma(\alpha)} \int_0^t (t-s)^{\alpha-1} f(s) ds = \mathcal{I}_\alpha f(t), \quad t \in [0, T],$$

$$(42) \quad \frac{1}{\Gamma(\alpha)} \int_0^t (t-s)^{\alpha-1} f(s) ds = \mathcal{I}_\alpha f(t), \quad t \in J, \quad (43)$$

[illegible]

[illegible]

[illegible]

[illegible]

[illegible]

[illegible]

[illegible]

(50)

| | 10 | 20 | 30 | 40 | 50 |
|-----|-----|-----|-----|-----|-----|
| 300 | ... | ... | ... | ... | ... |
| 310 | ... | ... | ... | ... | ... |
| 320 | ... | ... | ... | ... | ... |
| 330 | ... | ... | ... | ... | ... |
| 340 | ... | ... | ... | ... | ... |
| 350 | ... | ... | ... | ... | ... |
| 360 | ... | ... | ... | ... | ... |
| 370 | ... | ... | ... | ... | ... |

[illegible]

$$(53) \quad \frac{1}{\Gamma(\alpha)} \int_0^t (t-s)^{\alpha-1} f(s) ds = \frac{1}{\Gamma(\alpha)} \int_0^t (t-s)^{\alpha-1} f(s) ds$$

[illegible]

| | 210 | 220 | 230 | 240 | 250 | 260 |
|-----|-----|-----|-----|-----|-----|-----|
| 300 | + | + | + | + | + | + |
| 310 | + | + | + | + | + | + |
| 320 | + | + | + | + | + | + |
| 330 | + | + | + | + | + | + |
| 340 | + | + | + | + | + | + |
| 350 | + | + | + | + | + | + |
| 360 | + | + | + | + | + | + |
| 370 | + | + | + | + | + | + |

[illegible]

[illegible]

| 300 | 420 | 430 | 440 | 450 | 460 | 470 |
|-----|-----|-----|-----|-----|-----|------|
| 310 | 320 | 330 | 340 | 350 | 360 | 370 |
| 380 | 390 | 400 | 410 | 420 | 430 | 440 |
| 450 | 460 | 470 | 480 | 490 | 500 | 510 |
| 520 | 530 | 540 | 550 | 560 | 570 | 580 |
| 590 | 600 | 610 | 620 | 630 | 640 | 650 |
| 660 | 670 | 680 | 690 | 700 | 710 | 720 |
| 730 | 740 | 750 | 760 | 770 | 780 | 790 |
| 800 | 810 | 820 | 830 | 840 | 850 | 860 |
| 870 | 880 | 890 | 900 | 910 | 920 | 930 |
| 940 | 950 | 960 | 970 | 980 | 990 | 1000 |

[illegible]

[illegible]

[illegible]

(70)

[illegible]

$$(73) \quad \frac{1}{\Gamma(\alpha)} \int_0^t (t-s)^{\alpha-1} f(s) ds = \frac{1}{\Gamma(\alpha)} \int_0^t (t-s)^{\alpha-1} f(s) ds$$

| | 160 | 170 | 180 | 190 | 200 | 210 |
|-----|-----|-----|-----|-----|-----|-----|
| 450 | 7 | 1 | 1 | 1 | 1 | 1 |
| 460 | 7 | 1 | 1 | 1 | 1 | 1 |
| 470 | 7 | 1 | 1 | 1 | 1 | 1 |
| 480 | 7 | 1 | 1 | 1 | 1 | 1 |
| 490 | 7 | 1 | 1 | 1 | 1 | 1 |
| 500 | 7 | 1 | 1 | 1 | 1 | 1 |
| 510 | 7 | 1 | 1 | 1 | 1 | 1 |
| 520 | 7 | 1 | 1 | 1 | 1 | 1 |

| 450 | 260 | 270 | 280 | 290 | 300 | 310 |
|-----|-----|-----|-----|-----|-----|-----|
| 450 | 260 | 270 | 280 | 290 | 300 | 310 |
| 460 | 260 | 270 | 280 | 290 | 300 | 310 |
| 470 | 260 | 270 | 280 | 290 | 300 | 310 |
| 480 | 260 | 270 | 280 | 290 | 300 | 310 |
| 490 | 260 | 270 | 280 | 290 | 300 | 310 |
| 500 | 260 | 270 | 280 | 290 | 300 | 310 |
| 510 | 260 | 270 | 280 | 290 | 300 | 310 |
| 520 | 260 | 270 | 280 | 290 | 300 | 310 |

$$(77) \quad \mathcal{L}(\mathcal{A}) = \mathcal{L}(\mathcal{B}) \quad (78)$$

[illegible]

| 450 | 420 | 430 | 440 | 450 | 460 | 470 |
|-----|-----|-----|-----|-----|-----|-----|
| 450 | 420 | 430 | 440 | 450 | 460 | 470 |
| 460 | 420 | 430 | 440 | 450 | 460 | 470 |
| 470 | 420 | 430 | 440 | 450 | 460 | 470 |
| 480 | 420 | 430 | 440 | 450 | 460 | 470 |
| 490 | 420 | 430 | 440 | 450 | 460 | 470 |
| 500 | 420 | 430 | 440 | 450 | 460 | 470 |
| 510 | 420 | 430 | 440 | 450 | 460 | 470 |
| 520 | 420 | 430 | 440 | 450 | 460 | 470 |

| 450 | 470 | 480 | 490 | 500 |
|-----|-----|-----|-----|-----|
| 450 | 470 | 480 | 490 | 500 |
| 460 | 470 | 480 | 490 | 500 |
| 470 | 480 | 490 | 500 | |
| 480 | 490 | 500 | | |
| 490 | 500 | | | |
| 500 | | | | |
| 510 | | | | |
| 520 | | | | |

[illegible]

[illegible]

[illegible]

[illegible]

[illegible]

[illegible]

[illegible]

$$(88) \quad \mathcal{L}(\mathcal{A}) \subseteq \mathcal{L}(\mathcal{B}) \iff \mathcal{A} \subseteq \mathcal{B} \quad (89)$$

(90)

$$(92) \quad \mathcal{H}^{\text{reg}}_{\text{reg}} = \mathcal{H}^{\text{reg}}_{\text{reg}} \quad (93)$$

| 600 | 210 | 220 | 230 | 240 | 250 | 260 |
|-----|-----|-----|-----|-----|-----|-----|
| 600 | L | L | L | L | L | L |
| 610 | L | L | L | L | L | L |
| 620 | L | L | L | L | L | L |
| 630 | L | L | L | L | L | L |
| 640 | L | L | L | L | L | L |
| 650 | L | L | L | L | L | L |
| 660 | L | L | L | L | L | L |
| 670 | L | L | L | L | L | L |

| 600 | 260 | 270 | 280 | 290 | 300 | 310 |
|------|-----|-----|-----|-----|-----|-----|
| 600 | m m | u u | u u | u u | u u | u u |
| 610 | u u | u u | u u | u u | u u | u u |
| 620 | u u | u u | u u | u u | u u | u u |
| 630 | u u | u u | u u | u u | u u | u u |
| 640 | u u | u u | u u | u u | u u | u u |
| 650 | u u | u u | u u | u u | u u | u u |
| 660 | u u | u u | u u | u u | u u | u u |
| 670 | u u | u u | u u | u u | u u | u u |
| 680 | u u | u u | u u | u u | u u | u u |
| 690 | u u | u u | u u | u u | u u | u u |
| 700 | u u | u u | u u | u u | u u | u u |
| 710 | u u | u u | u u | u u | u u | u u |
| 720 | u u | u u | u u | u u | u u | u u |
| 730 | u u | u u | u u | u u | u u | u u |
| 740 | u u | u u | u u | u u | u u | u u |
| 750 | u u | u u | u u | u u | u u | u u |
| 760 | u u | u u | u u | u u | u u | u u |
| 770 | u u | u u | u u | u u | u u | u u |
| 780 | u u | u u | u u | u u | u u | u u |
| 790 | u u | u u | u u | u u | u u | u u |
| 800 | u u | u u | u u | u u | u u | u u |
| 810 | u u | u u | u u | u u | u u | u u |
| 820 | u u | u u | u u | u u | u u | u u |
| 830 | u u | u u | u u | u u | u u | u u |
| 840 | u u | u u | u u | u u | u u | u u |
| 850 | u u | u u | u u | u u | u u | u u |
| 860 | u u | u u | u u | u u | u u | u u |
| 870 | u u | u u | u u | u u | u u | u u |
| 880 | u u | u u | u u | u u | u u | u u |
| 890 | u u | u u | u u | u u | u u | u u |
| 900 | u u | u u | u u | u u | u u | u u |
| 910 | u u | u u | u u | u u | u u | u u |
| 920 | u u | u u | u u | u u | u u | u u |
| 930 | u u | u u | u u | u u | u u | u u |
| 940 | u u | u u | u u | u u | u u | u u |
| 950 | u u | u u | u u | u u | u u | u u |
| 960 | u u | u u | u u | u u | u u | u u |
| 970 | u u | u u | u u | u u | u u | u u |
| 980 | u u | u u | u u | u u | u u | u u |
| 990 | u u | u u | u u | u u | u u | u u |
| 1000 | u u | u u | u u | u u | u u | u u |

$$(97) \quad \text{[...]} \quad (98)$$

[illegible]

$$(99) \quad \text{[The rest of the page content is missing, but the structure is clear from the previous blocks.]} \quad (100)$$

(100)

(102)

[illegible]

(104)

[illegible]

(106)

(107)

(108)

(109)

[illegible]

(110)

[illegible]

[illegible]

| | 750 | 110 | 120 | 130 | 140 | 150 |
|--|-----|-----|-----|-----|-----|-----|
| | 750 | 110 | 120 | 130 | 140 | 150 |
| | 760 | | | | | |
| | 770 | | | | | |
| | 780 | | | | | |
| | 790 | | | | | |
| | 800 | | | | | |
| | 810 | | | | | |
| | 820 | | | | | |

(115)

| 750 | 210 | 220 | 230 | 240 | 250 | 260 |
|------|------|------|------|------|------|------|
| 750 | 750 | 750 | 750 | 750 | 750 | 750 |
| 760 | 760 | 760 | 760 | 760 | 760 | 760 |
| 770 | 770 | 770 | 770 | 770 | 770 | 770 |
| 780 | 780 | 780 | 780 | 780 | 780 | 780 |
| 790 | 790 | 790 | 790 | 790 | 790 | 790 |
| 800 | 800 | 800 | 800 | 800 | 800 | 800 |
| 810 | 810 | 810 | 810 | 810 | 810 | 810 |
| 820 | 820 | 820 | 820 | 820 | 820 | 820 |
| 830 | 830 | 830 | 830 | 830 | 830 | 830 |
| 840 | 840 | 840 | 840 | 840 | 840 | 840 |
| 850 | 850 | 850 | 850 | 850 | 850 | 850 |
| 860 | 860 | 860 | 860 | 860 | 860 | 860 |
| 870 | 870 | 870 | 870 | 870 | 870 | 870 |
| 880 | 880 | 880 | 880 | 880 | 880 | 880 |
| 890 | 890 | 890 | 890 | 890 | 890 | 890 |
| 900 | 900 | 900 | 900 | 900 | 900 | 900 |
| 910 | 910 | 910 | 910 | 910 | 910 | 910 |
| 920 | 920 | 920 | 920 | 920 | 920 | 920 |
| 930 | 930 | 930 | 930 | 930 | 930 | 930 |
| 940 | 940 | 940 | 940 | 940 | 940 | 940 |
| 950 | 950 | 950 | 950 | 950 | 950 | 950 |
| 960 | 960 | 960 | 960 | 960 | 960 | 960 |
| 970 | 970 | 970 | 970 | 970 | 970 | 970 |
| 980 | 980 | 980 | 980 | 980 | 980 | 980 |
| 990 | 990 | 990 | 990 | 990 | 990 | 990 |
| 1000 | 1000 | 1000 | 1000 | 1000 | 1000 | 1000 |

| 750 | 260 | 270 | 280 | 290 | 300 | 310 |
|-----|-----|-----|-----|-----|-----|-----|
| 760 | 770 | 780 | 790 | 800 | 810 | 820 |

(118)

| 750 | 370 | 380 | 390 | 400 | 410 |
|-----|-----|-----|-----|-----|-----|
| 1 | 1 | 1 | 1 | 1 | 1 |
| 2 | 2 | 2 | 2 | 2 | 2 |
| 3 | 3 | 3 | 3 | 3 | 3 |
| 4 | 4 | 4 | 4 | 4 | 4 |
| 5 | 5 | 5 | 5 | 5 | 5 |
| 6 | 6 | 6 | 6 | 6 | 6 |
| 7 | 7 | 7 | 7 | 7 | 7 |
| 8 | 8 | 8 | 8 | 8 | 8 |
| 9 | 9 | 9 | 9 | 9 | 9 |
| 10 | 10 | 10 | 10 | 10 | 10 |
| 11 | 11 | 11 | 11 | 11 | 11 |
| 12 | 12 | 12 | 12 | 12 | 12 |
| 13 | 13 | 13 | 13 | 13 | 13 |
| 14 | 14 | 14 | 14 | 14 | 14 |
| 15 | 15 | 15 | 15 | 15 | 15 |
| 16 | 16 | 16 | 16 | 16 | 16 |
| 17 | 17 | 17 | 17 | 17 | 17 |
| 18 | 18 | 18 | 18 | 18 | 18 |
| 19 | 19 | 19 | 19 | 19 | 19 |
| 20 | 20 | 20 | 20 | 20 | 20 |
| 21 | 21 | 21 | 21 | 21 | 21 |
| 22 | 22 | 22 | 22 | 22 | 22 |
| 23 | 23 | 23 | 23 | 23 | 23 |
| 24 | 24 | 24 | 24 | 24 | 24 |
| 25 | 25 | 25 | 25 | 25 | 25 |
| 26 | 26 | 26 | 26 | 26 | 26 |
| 27 | 27 | 27 | 27 | 27 | 27 |
| 28 | 28 | 28 | 28 | 28 | 28 |
| 29 | 29 | 29 | 29 | 29 | 29 |
| 30 | 30 | 30 | 30 | 30 | 30 |
| 31 | 31 | 31 | 31 | 31 | 31 |
| 32 | 32 | 32 | 32 | 32 | 32 |
| 33 | 33 | 33 | 33 | 33 | 33 |
| 34 | 34 | 34 | 34 | 34 | 34 |
| 35 | 35 | 35 | 35 | 35 | 35 |
| 36 | 36 | 36 | 36 | 36 | 36 |
| 37 | 37 | 37 | 37 | 37 | 37 |
| 38 | 38 | 38 | 38 | 38 | 38 |
| 39 | 39 | 39 | 39 | 39 | 39 |
| 40 | 40 | 40 | 40 | 40 | 40 |
| 41 | 41 | 41 | 41 | 41 | 41 |
| 42 | 42 | 42 | 42 | 42 | 42 |
| 43 | 43 | 43 | 43 | 43 | 43 |
| 44 | 44 | 44 | 44 | 44 | 44 |
| 45 | 45 | 45 | 45 | 45 | 45 |
| 46 | 46 | 46 | 46 | 46 | 46 |
| 47 | 47 | 47 | 47 | 47 | 47 |
| 48 | 48 | 48 | 48 | 48 | 48 |
| 49 | 49 | 49 | 49 | 49 | 49 |
| 50 | 50 | 50 | 50 | 50 | 50 |
| 51 | 51 | 51 | 51 | 51 | 51 |
| 52 | 52 | 52 | 52 | 52 | 52 |
| 53 | 53 | 53 | 53 | 53 | 53 |
| 54 | 54 | 54 | 54 | 54 | 54 |
| 55 | 55 | 55 | 55 | 55 | 55 |
| 56 | 56 | 56 | 56 | 56 | 56 |
| 57 | 57 | 57 | 57 | 57 | 57 |
| 58 | 58 | 58 | 58 | 58 | 58 |
| 59 | 59 | 59 | 59 | 59 | 59 |
| 60 | 60 | 60 | 60 | 60 | 60 |
| 61 | 61 | 61 | 61 | 61 | 61 |
| 62 | 62 | 62 | 62 | 62 | 62 |
| 63 | 63 | 63 | 63 | 63 | 63 |
| 64 | 64 | 64 | 64 | 64 | 64 |
| 65 | 65 | 65 | 65 | 65 | 65 |
| 66 | 66 | 66 | 66 | 66 | 66 |
| 67 | 67 | 67 | 67 | 67 | 67 |
| 68 | 68 | 68 | 68 | 68 | 68 |
| 69 | 69 | 69 | 69 | 69 | 69 |
| 70 | 70 | 70 | 70 | 70 | 70 |
| 71 | 71 | 71 | 71 | 71 | 71 |
| 72 | 72 | 72 | 72 | 72 | 72 |
| 73 | 73 | 73 | 73 | 73 | 73 |
| 74 | 74 | 74 | 74 | 74 | 74 |
| 75 | 75 | 75 | 75 | 75 | 75 |
| 76 | 76 | 76 | 76 | 76 | 76 |
| 77 | 77 | 77 | 77 | 77 | 77 |
| 78 | 78 | 78 | 78 | 78 | 78 |
| 79 | 79 | 79 | 79 | 79 | 79 |
| 80 | 80 | 80 | 80 | 80 | 80 |
| 81 | 81 | 81 | 81 | 81 | 81 |
| 82 | 82 | 82 | 82 | 82 | 82 |
| 83 | 83 | 83 | 83 | 83 | 83 |
| 84 | 84 | 84 | 84 | 84 | 84 |
| 85 | 85 | 85 | 85 | 85 | 85 |
| 86 | 86 | 86 | 86 | 86 | 86 |
| 87 | 87 | 87 | 87 | 87 | 87 |
| 88 | 88 | 88 | 88 | 88 | 88 |
| 89 | 89 | 89 | 89 | 89 | 89 |
| 90 | 90 | 90 | 90 | 90 | 90 |
| 91 | 91 | 91 | 91 | 91 | 91 |
| 92 | 92 | 92 | 92 | 92 | 92 |
| 93 | 93 | 93 | 93 | 93 | 93 |
| 94 | 94 | 94 | 94 | 94 | 94 |
| 95 | 95 | 95 | 95 | 95 | 95 |
| 96 | 96 | 96 | 96 | 96 | 96 |
| 97 | 97 | 97 | 97 | 97 | 97 |
| 98 | 98 | 98 | 98 | 98 | 98 |
| 99 | 99 | 99 | 99 | 99 | 99 |
| 100 | 100 | 100 | 100 | 100 | 100 |

| 750 | 420 | 430 | 440 | 450 | 460 | 470 |
|-----|-----|-----|-----|-----|-----|-----|
| 760 | 770 | 780 | 790 | 800 | 810 | 820 |

| 750 | 470 | 480 | 490 | 500 |
|-----|-----|-----|-----|-----|
| 760 | 770 | 780 | 790 | 800 |
| 810 | 820 | | | |

| | 10 | | | | | | | | | | 20 | | | | | | | | | | 30 | | | | | | | | | | 40 | | | | | | | | | | 50 | | | | | | | | | | | |
|-----|----|---|---|---|---|---|---|---|---|---|----|---|---|---|---|---|---|---|---|---|----|---|---|---|---|---|---|---|---|---|----|---|---|---|---|---|---|---|---|---|----|---|---|---|---|---|---|---|---|---|---|---|
| 830 | 5 | T | 5 | Q | Y | Q | Y | Q | Y | Q | 5 | Q | Y | Q | Y | Q | 5 | Q | Y | Q | Y | Q | 5 | Q | Y | Q | Y | Q | 5 | Q | Y | Q | Y | Q | 5 | Q | Y | Q | Y | Q | 5 | Q | Y | Q | Y | Q | 5 | Q | Y | Q | Y | Q |
| 840 | 5 | T | 5 | Q | Y | Q | Y | Q | Y | Q | 5 | Q | Y | Q | Y | Q | 5 | Q | Y | Q | Y | Q | 5 | Q | Y | Q | Y | Q | 5 | Q | Y | Q | Y | Q | 5 | Q | Y | Q | Y | Q | 5 | Q | Y | Q | Y | Q | 5 | Q | Y | Q | Y | Q |
| 850 | 5 | T | 5 | Q | Y | Q | Y | Q | Y | Q | 5 | Q | Y | Q | Y | Q | 5 | Q | Y | Q | Y | Q | 5 | Q | Y | Q | Y | Q | 5 | Q | Y | Q | Y | Q | 5 | Q | Y | Q | Y | Q | 5 | Q | Y | Q | Y | Q | 5 | Q | Y | Q | Y | Q |
| 860 | 5 | T | 5 | Q | Y | Q | Y | Q | Y | Q | 5 | Q | Y | Q | Y | Q | 5 | Q | Y | Q | Y | Q | 5 | Q | Y | Q | Y | Q | 5 | Q | Y | Q | Y | Q | 5 | Q | Y | Q | Y | Q | 5 | Q | Y | Q | Y | Q | 5 | Q | Y | Q | Y | Q |
| 870 | 5 | T | 5 | Q | Y | Q | Y | Q | Y | Q | 5 | Q | Y | Q | Y | Q | 5 | Q | Y | Q | Y | Q | 5 | Q | Y | Q | Y | Q | 5 | Q | Y | Q | Y | Q | 5 | Q | Y | Q | Y | Q | 5 | Q | Y | Q | Y | Q | 5 | Q | Y | Q | Y | Q |
| 880 | 5 | T | 5 | Q | Y | Q | Y | Q | Y | Q | 5 | Q | Y | Q | Y | Q | 5 | Q | Y | Q | Y | Q | 5 | Q | Y | Q | Y | Q | 5 | Q | Y | Q | Y | Q | 5 | Q | Y | Q | Y | Q | 5 | Q | Y | Q | Y | Q | 5 | Q | Y | Q | Y | Q |
| 890 | 5 | T | 5 | Q | Y | Q | Y | Q | Y | Q | 5 | Q | Y | Q | Y | Q | 5 | Q | Y | Q | Y | Q | 5 | Q | Y | Q | Y | Q | 5 | Q | Y | Q | Y | Q | 5 | Q | Y | Q | Y | Q | 5 | Q | Y | Q | Y | Q | 5 | Q | Y | Q | Y | Q |
| 900 | 5 | T | 5 | Q | Y | Q | Y | Q | Y | Q | 5 | Q | Y | Q | Y | Q | 5 | Q | Y | Q | Y | Q | 5 | Q | Y | Q | Y | Q | 5 | Q | Y | Q | Y | Q | 5 | Q | Y | Q | Y | Q | 5 | Q | Y | Q | Y | Q | 5 | Q | Y | Q | Y | Q |

(123)

| | 110 | 120 | 130 | 140 | 150 |
|-----|-----|-----|-----|-----|-----|
| 830 | X | X | X | X | X |
| 831 | X | X | X | X | X |
| 832 | X | X | X | X | X |
| 833 | X | X | X | X | X |
| 834 | X | X | X | X | X |
| 835 | X | X | X | X | X |
| 836 | X | X | X | X | X |
| 837 | X | X | X | X | X |
| 838 | X | X | X | X | X |
| 839 | X | X | X | X | X |
| 840 | X | X | X | X | X |
| 841 | X | X | X | X | X |
| 842 | X | X | X | X | X |
| 843 | X | X | X | X | X |
| 844 | X | X | X | X | X |
| 845 | X | X | X | X | X |
| 846 | X | X | X | X | X |
| 847 | X | X | X | X | X |
| 848 | X | X | X | X | X |
| 849 | X | X | X | X | X |
| 850 | X | X | X | X | X |
| 851 | X | X | X | X | X |
| 852 | X | X | X | X | X |
| 853 | X | X | X | X | X |
| 854 | X | X | X | X | X |
| 855 | X | X | X | X | X |
| 856 | X | X | X | X | X |
| 857 | X | X | X | X | X |
| 858 | X | X | X | X | X |
| 859 | X | X | X | X | X |
| 860 | X | X | X | X | X |
| 861 | X | X | X | X | X |
| 862 | X | X | X | X | X |
| 863 | X | X | X | X | X |
| 864 | X | X | X | X | X |
| 865 | X | X | X | X | X |
| 866 | X | X | X | X | X |
| 867 | X | X | X | X | X |
| 868 | X | X | X | X | X |
| 869 | X | X | X | X | X |
| 870 | X | X | X | X | X |
| 871 | X | X | X | X | X |
| 872 | X | X | X | X | X |
| 873 | X | X | X | X | X |
| 874 | X | X | X | X | X |
| 875 | X | X | X | X | X |
| 876 | X | X | X | X | X |
| 877 | X | X | X | X | X |
| 878 | X | X | X | X | X |
| 879 | X | X | X | X | X |
| 880 | X | X | X | X | X |
| 881 | X | X | X | X | X |
| 882 | X | X | X | X | X |
| 883 | X | X | X | X | X |
| 884 | X | X | X | X | X |
| 885 | X | X | X | X | X |
| 886 | X | X | X | X | X |
| 887 | X | X | X | X | X |
| 888 | X | X | X | X | X |
| 889 | X | X | X | X | X |
| 890 | X | X | X | X | X |
| 891 | X | X | X | X | X |
| 892 | X | X | X | X | X |
| 893 | X | X | X | X | X |
| 894 | X | X | X | X | X |
| 895 | X | X | X | X | X |
| 896 | X | X | X | X | X |
| 897 | X | X | X | X | X |
| 898 | X | X | X | X | X |
| 899 | X | X | X | X | X |
| 900 | X | X | X | X | X |

[illegible]

[illegible]

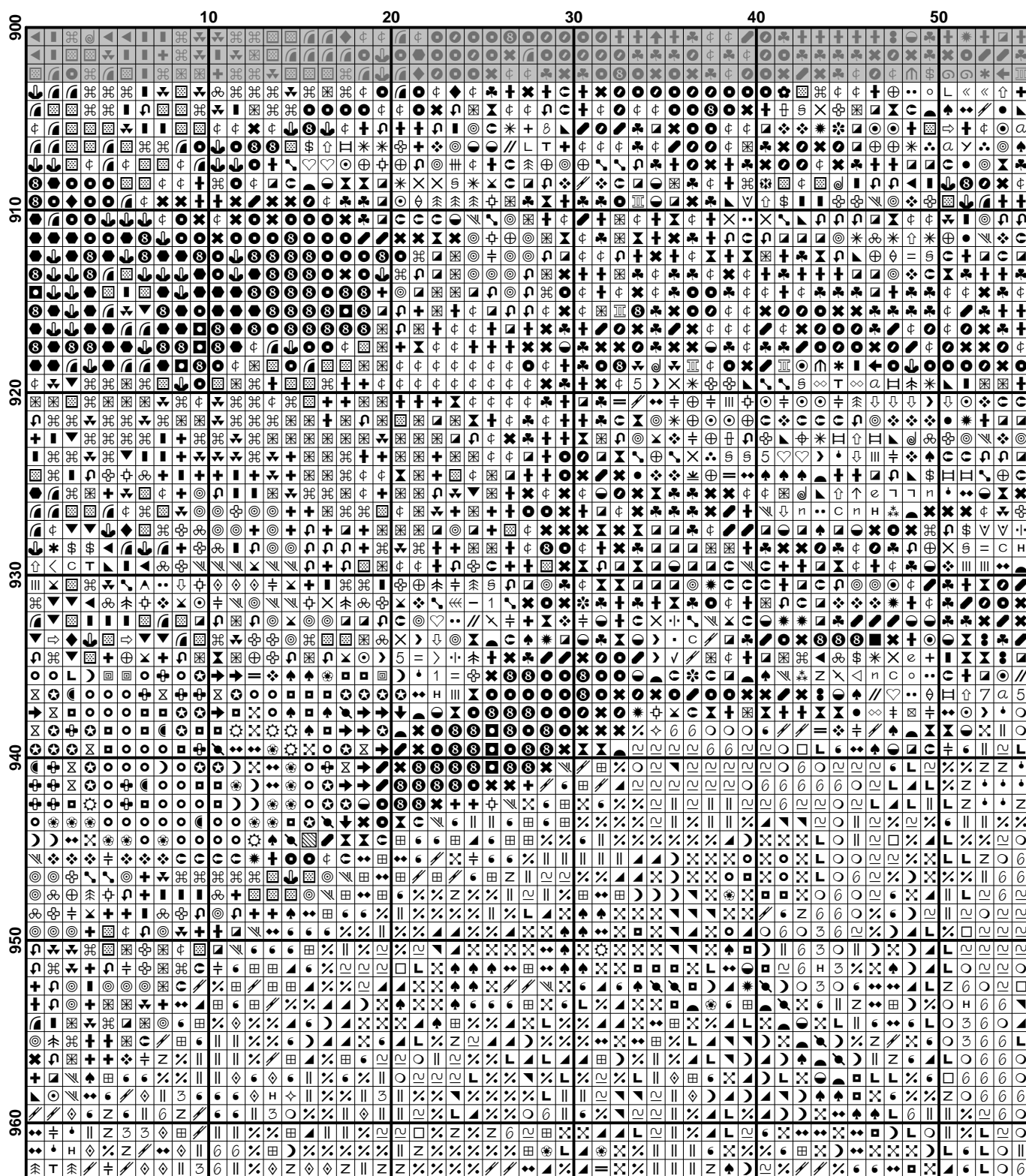
| 260 | 270 | 280 | 290 | 300 | 310 |
|-----|-----|-----|-----|-----|-----|
| 830 | 840 | 850 | 860 | 870 | 880 |
| 890 | 900 | | | | |

| | 320 | | | | | | | | | | 330 | | | | | | | | | | 340 | | | | | | | | | | 350 | | | | | | | | | | 360 | | | | | | | | | | | | | | | | | | | |
|-----|---|--|--|--|--|--|--|--|--|--|-----|--|--|--|--|--|--|--|--|--|-----|--|--|--|--|--|--|--|--|--|-----|--|--|--|--|--|--|--|--|--|-----|--|--|--|--|--|--|--|--|--|--|--|--|--|--|--|--|--|--|--|
| 830 | [Complex grid of symbols and numbers for row 830] | | | | | | | | | | | | | | | | | | | | | | | | | | | | | | | | | | | | | | | | | | | | | | | | | | | | | | | | | | | |
| | [Complex grid of symbols and numbers for row 830] | | | | | | | | | | | | | | | | | | | | | | | | | | | | | | | | | | | | | | | | | | | | | | | | | | | | | | | | | | | |
| | [Complex grid of symbols and numbers for row 830] | | | | | | | | | | | | | | | | | | | | | | | | | | | | | | | | | | | | | | | | | | | | | | | | | | | | | | | | | | | |
| | [Complex grid of symbols and numbers for row 830] | | | | | | | | | | | | | | | | | | | | | | | | | | | | | | | | | | | | | | | | | | | | | | | | | | | | | | | | | | | |
| | [Complex grid of symbols and numbers for row 830] | | | | | | | | | | | | | | | | | | | | | | | | | | | | | | | | | | | | | | | | | | | | | | | | | | | | | | | | | | | |
| 840 | [Complex grid of symbols and numbers for row 840] | | | | | | | | | | | | | | | | | | | | | | | | | | | | | | | | | | | | | | | | | | | | | | | | | | | | | | | | | | | |
| | [Complex grid of symbols and numbers for row 840] | | | | | | | | | | | | | | | | | | | | | | | | | | | | | | | | | | | | | | | | | | | | | | | | | | | | | | | | | | | |
| | [Complex grid of symbols and numbers for row 840] | | | | | | | | | | | | | | | | | | | | | | | | | | | | | | | | | | | | | | | | | | | | | | | | | | | | | | | | | | | |
| | [Complex grid of symbols and numbers for row 840] | | | | | | | | | | | | | | | | | | | | | | | | | | | | | | | | | | | | | | | | | | | | | | | | | | | | | | | | | | | |
| | [Complex grid of symbols and numbers for row 840] | | | | | | | | | | | | | | | | | | | | | | | | | | | | | | | | | | | | | | | | | | | | | | | | | | | | | | | | | | | |
| 850 | [Complex grid of symbols and numbers for row 850] | | | | | | | | | | | | | | | | | | | | | | | | | | | | | | | | | | | | | | | | | | | | | | | | | | | | | | | | | | | |
| | [Complex grid of symbols and numbers for row 850] | | | | | | | | | | | | | | | | | | | | | | | | | | | | | | | | | | | | | | | | | | | | | | | | | | | | | | | | | | | |
| | [Complex grid of symbols and numbers for row 850] | | | | | | | | | | | | | | | | | | | | | | | | | | | | | | | | | | | | | | | | | | | | | | | | | | | | | | | | | | | |
| | [Complex grid of symbols and numbers for row 850] | | | | | | | | | | | | | | | | | | | | | | | | | | | | | | | | | | | | | | | | | | | | | | | | | | | | | | | | | | | |
| | [Complex grid of symbols and numbers for row 850] | | | | | | | | | | | | | | | | | | | | | | | | | | | | | | | | | | | | | | | | | | | | | | | | | | | | | | | | | | | |
| 860 | [Complex grid of symbols and numbers for row 860] | | | | | | | | | | | | | | | | | | | | | | | | | | | | | | | | | | | | | | | | | | | | | | | | | | | | | | | | | | | |
| | [Complex grid of symbols and numbers for row 860] | | | | | | | | | | | | | | | | | | | | | | | | | | | | | | | | | | | | | | | | | | | | | | | | | | | | | | | | | | | |
| | [Complex grid of symbols and numbers for row 860] | | | | | | | | | | | | | | | | | | | | | | | | | | | | | | | | | | | | | | | | | | | | | | | | | | | | | | | | | | | |
| | [Complex grid of symbols and numbers for row 860] | | | | | | | | | | | | | | | | | | | | | | | | | | | | | | | | | | | | | | | | | | | | | | | | | | | | | | | | | | | |
| | [Complex grid of symbols and numbers for row 860] | | | | | | | | | | | | | | | | | | | | | | | | | | | | | | | | | | | | | | | | | | | | | | | | | | | | | | | | | | | |
| 870 | [Complex grid of symbols and numbers for row 870] | | | | | | | | | | | | | | | | | | | | | | | | | | | | | | | | | | | | | | | | | | | | | | | | | | | | | | | | | | | |
| | [Complex grid of symbols and numbers for row 870] | | | | | | | | | | | | | | | | | | | | | | | | | | | | | | | | | | | | | | | | | | | | | | | | | | | | | | | | | | | |
| | [Complex grid of symbols and numbers for row 870] | | | | | | | | | | | | | | | | | | | | | | | | | | | | | | | | | | | | | | | | | | | | | | | | | | | | | | | | | | | |
| | [Complex grid of symbols and numbers for row 870] | | | | | | | | | | | | | | | | | | | | | | | | | | | | | | | | | | | | | | | | | | | | | | | | | | | | | | | | | | | |
| | [Complex grid of symbols and numbers for row 870] | | | | | | | | | | | | | | | | | | | | | | | | | | | | | | | | | | | | | | | | | | | | | | | | | | | | | | | | | | | |
| 880 | [Complex grid of symbols and numbers for row 880] | | | | | | | | | | | | | | | | | | | | | | | | | | | | | | | | | | | | | | | | | | | | | | | | | | | | | | | | | | | |
| | [Complex grid of symbols and numbers for row 880] | | | | | | | | | | | | | | | | | | | | | | | | | | | | | | | | | | | | | | | | | | | | | | | | | | | | | | | | | | | |
| | [Complex grid of symbols and numbers for row 880] | | | | | | | | | | | | | | | | | | | | | | | | | | | | | | | | | | | | | | | | | | | | | | | | | | | | | | | | | | | |
| | [Complex grid of symbols and numbers for row 880] | | | | | | | | | | | | | | | | | | | | | | | | | | | | | | | | | | | | | | | | | | | | | | | | | | | | | | | | | | | |
| | [Complex grid of symbols and numbers for row 880] | | | | | | | | | | | | | | | | | | | | | | | | | | | | | | | | | | | | | | | | | | | | | | | | | | | | | | | | | | | |
| 890 | [Complex grid of symbols and numbers for row 890] | | | | | | | | | | | | | | | | | | | | | | | | | | | | | | | | | | | | | | | | | | | | | | | | | | | | | | | | | | | |
| | [Complex grid of symbols and numbers for row 890] | | | | | | | | | | | | | | | | | | | | | | | | | | | | | | | | | | | | | | | | | | | | | | | | | | | | | | | | | | | |
| | [Complex grid of symbols and numbers for row 890] | | | | | | | | | | | | | | | | | | | | | | | | | | | | | | | | | | | | | | | | | | | | | | | | | | | | | | | | | | | |
| | [Complex grid of symbols and numbers for row 890] | | | | | | | | | | | | | | | | | | | | | | | | | | | | | | | | | | | | | | | | | | | | | | | | | | | | | | | | | | | |
| | [Complex grid of symbols and numbers for row 890] | | | | | | | | | | | | | | | | | | | | | | | | | | | | | | | | | | | | | | | | | | | | | | | | | | | | | | | | | | | |
| 900 | [Complex grid of symbols and numbers for row 900] | | | | | | | | | | | | | | | | | | | | | | | | | | | | | | | | | | | | | | | | | | | | | | | | | | | | | | | | | | | |
| | [Complex grid of symbols and numbers for row 900] | | | | | | | | | | | | | | | | | | | | | | | | | | | | | | | | | | | | | | | | | | | | | | | | | | | | | | | | | | | |
| | [Complex grid of symbols and numbers for row 900] | | | | | | | | | | | | | | | | | | | | | | | | | | | | | | | | | | | | | | | | | | | | | | | | | | | | | | | | | | | |
| | [Complex grid of symbols and numbers for row 900] | | | | | | | | | | | | | | | | | | | | | | | | | | | | | | | | | | | | | | | | | | | | | | | | | | | | | | | | | | | |
| | [Complex grid of symbols and numbers for row 900] | | | | | | | | | | | | | | | | | | | | | | | | | | | | | | | | | | | | | | | | | | | | | | | | | | | | | | | | | | | |

| | 370 | 380 | 390 | 400 | 410 |
|-----|-----|-----|-----|-----|-----|
| 830 | ... | ... | ... | ... | ... |
| 840 | ... | ... | ... | ... | ... |
| 850 | ... | ... | ... | ... | ... |
| 860 | ... | ... | ... | ... | ... |
| 870 | ... | ... | ... | ... | ... |
| 880 | ... | ... | ... | ... | ... |
| 890 | ... | ... | ... | ... | ... |
| 900 | ... | ... | ... | ... | ... |

| | 420 | 430 | 440 | 450 | 460 | 470 |
|-----|-----|-----|-----|-----|-----|-----|
| 830 | ... | ... | ... | ... | ... | ... |
| 840 | ... | ... | ... | ... | ... | ... |
| 850 | ... | ... | ... | ... | ... | ... |
| 860 | ... | ... | ... | ... | ... | ... |
| 870 | ... | ... | ... | ... | ... | ... |
| 880 | ... | ... | ... | ... | ... | ... |
| 890 | ... | ... | ... | ... | ... | ... |
| 900 | ... | ... | ... | ... | ... | ... |

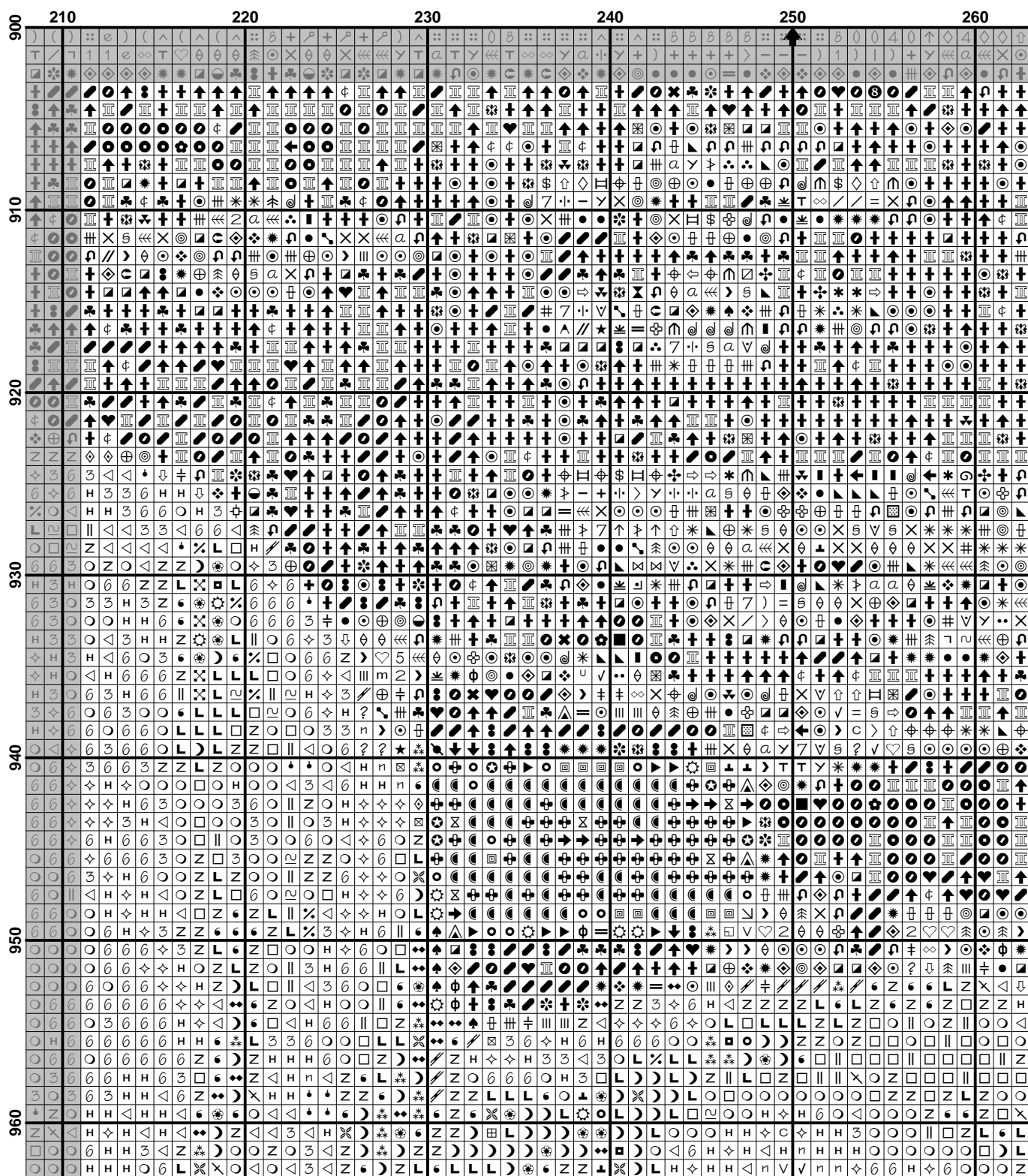
(130)

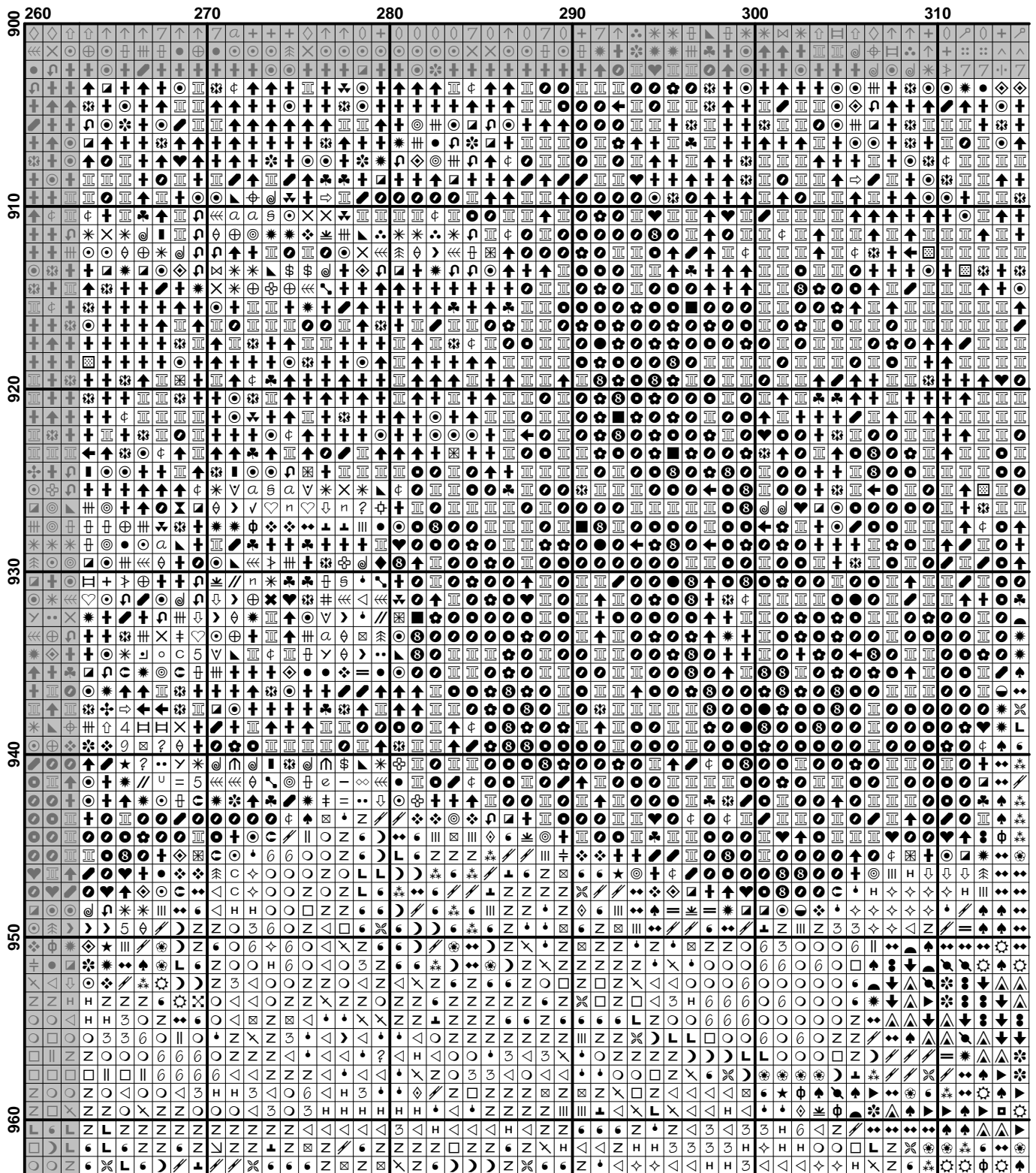


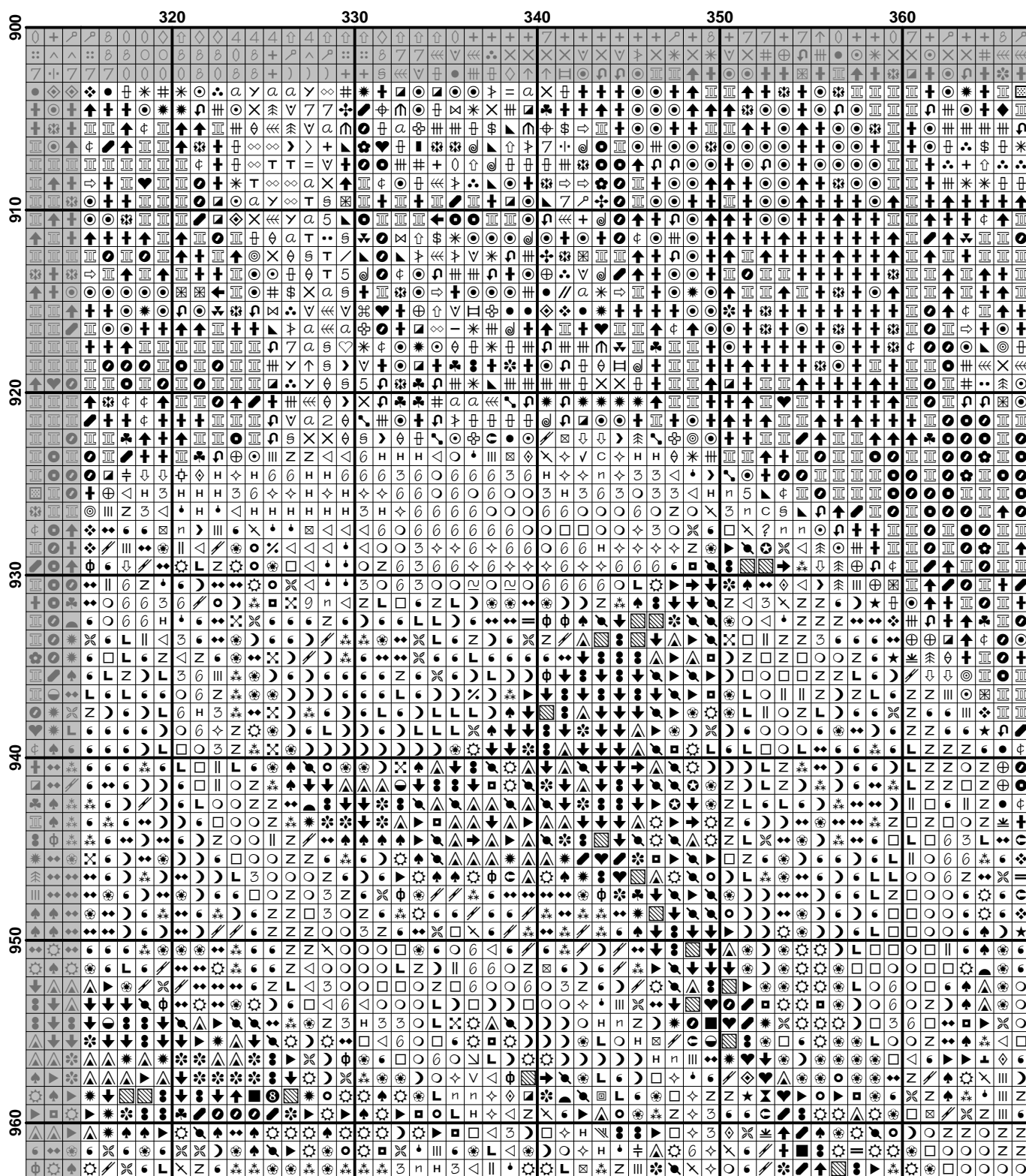
| | 60 | 70 | 80 | 90 | 100 |
|-----|----|----|----|----|-----|
| 900 | + | + | + | + | + |
| 910 | + | + | + | + | + |
| 920 | + | + | + | + | + |
| 930 | + | + | + | + | + |
| 940 | + | + | + | + | + |
| 950 | + | + | + | + | + |
| 960 | + | + | + | + | + |

| | 110 | 120 | 130 | 140 | 150 |
|-----|-----|-----|-----|-----|-----|
| 900 | | | | | |
| 910 | | | | | |
| 920 | | | | | |
| 930 | | | | | |
| 940 | | | | | |
| 950 | | | | | |
| 960 | | | | | |

[illegible]







| | 370 | 380 | 390 | 400 | 410 |
|-----|-----|-----|-----|-----|-----|
| 900 | + | 8 | 8 | 8 | 8 |
| 910 | + | 8 | 8 | 8 | 8 |
| 920 | + | 8 | 8 | 8 | 8 |
| 930 | + | 8 | 8 | 8 | 8 |
| 940 | + | 8 | 8 | 8 | 8 |
| 950 | + | 8 | 8 | 8 | 8 |
| 960 | + | 8 | 8 | 8 | 8 |

| | 420 | | | | | | | | | | 430 | | | | | | | | | | 440 | | | | | | | | | | 450 | | | | | | | | | | 460 | | | | | | | | | | 470 | | | | | | | | | | | | | | | | | | | | | | | | | | | | | | | | | | | | | | | | | | | | | | | | | | | | | | | | | | | | | | | | | | | | | | | | | | | | | | | | | | | | | | | | | | | | | | | | | | | | | | | | | | | | | | | | | | | | | | | | | | | | | | | | | | | | | | | | | | | | | | | | | | | | | | | | | | | | | | | | | | | | | | | | | | | | | | | | | | | | | | | | | | | | | | | | | | | | | | | | | | | | | | | | | | | | | | | | | | | | | | | | | | | | | | | | | | | | | | | | | | | | | | | | | | | | | | | | | | | | | | | | | | | | | | | | | | | | | | | | | | | | | | | | | | | | | | | | | | | | | | | | | | | | | | | | | | | | | | | | | | | | | | | | | | | | | | | | | | | | | | | | | | | | | | | | | | | | | | | | | | | | | | | | | | | | | | | | | | | | | | | | | | | | | | | | | | | | | | | | | | | | | | | | | | | | | | | | | | | | | | | | | | | | | | | | | | | | | | | | | | | | | | | | | | | | | | | | | | | | | | | | | | | | | | | | | | | | | | | | | | | | | | | | | | | | | | | | | | | | | | | | | | | | | | | | | | | | | | | | | | | | | | | | | | | | | | | | | | | | | | | | | | | | | | | | | | | | | | | | | | | | | | | | | | | | | | | | | | | | | | | | | | | | | | | | | | | | | | | | | | | | | | | | | | | | | | | | | | | | | | | | | | | | | | | | |
|-----|-----|--|--|--|--|--|--|--|--|--|-----|--|--|--|--|--|--|--|--|--|-----|--|--|--|--|--|--|--|--|--|-----|--|--|--|--|--|--|--|--|--|-----|--|--|--|--|--|--|--|--|--|-----|--|--|--|--|--|--|--|--|--|--|--|--|--|--|--|--|--|--|--|--|--|--|--|--|--|--|--|--|--|--|--|--|--|--|--|--|--|--|--|--|--|--|--|--|--|--|--|--|--|--|--|--|--|--|--|--|--|--|--|--|--|--|--|--|--|--|--|--|--|--|--|--|--|--|--|--|--|--|--|--|--|--|--|--|--|--|--|--|--|--|--|--|--|--|--|--|--|--|--|--|--|--|--|--|--|--|--|--|--|--|--|--|--|--|--|--|--|--|--|--|--|--|--|--|--|--|--|--|--|--|--|--|--|--|--|--|--|--|--|--|--|--|--|--|--|--|--|--|--|--|--|--|--|--|--|--|--|--|--|--|--|--|--|--|--|--|--|--|--|--|--|--|--|--|--|--|--|--|--|--|--|--|--|--|--|--|--|--|--|--|--|--|--|--|--|--|--|--|--|--|--|--|--|--|--|--|--|--|--|--|--|--|--|--|--|--|--|--|--|--|--|--|--|--|--|--|--|--|--|--|--|--|--|--|--|--|--|--|--|--|--|--|--|--|--|--|--|--|--|--|--|--|--|--|--|--|--|--|--|--|--|--|--|--|--|--|--|--|--|--|--|--|--|--|--|--|--|--|--|--|--|--|--|--|--|--|--|--|--|--|--|--|--|--|--|--|--|--|--|--|--|--|--|--|--|--|--|--|--|--|--|--|--|--|--|--|--|--|--|--|--|--|--|--|--|--|--|--|--|--|--|--|--|--|--|--|--|--|--|--|--|--|--|--|--|--|--|--|--|--|--|--|--|--|--|--|--|--|--|--|--|--|--|--|--|--|--|--|--|--|--|--|--|--|--|--|--|--|--|--|--|--|--|--|--|--|--|--|--|--|--|--|--|--|--|--|--|--|--|--|--|--|--|--|--|--|--|--|--|--|--|--|--|--|--|--|--|--|--|--|--|--|--|--|--|--|--|--|--|--|--|--|--|--|--|--|--|--|--|--|--|--|--|--|--|--|--|--|--|--|--|--|--|--|--|--|--|--|--|--|--|--|--|--|--|--|--|--|--|--|--|--|--|--|--|--|--|--|--|--|--|--|--|--|--|--|--|--|--|--|--|--|--|--|--|--|--|--|--|--|--|--|--|--|--|--|--|--|--|--|--|--|--|--|--|--|--|--|--|--|--|--|--|--|--|--|--|--|--|--|--|--|--|--|--|--|--|--|--|--|--|--|--|--|--|--|--|--|--|--|--|--|--|--|--|--|--|--|--|--|--|--|--|--|--|--|--|--|--|--|--|--|--|--|--|--|--|--|--|--|--|--|--|--|--|--|--|--|--|--|--|--|--|--|--|--|--|--|--|--|--|--|--|--|--|--|--|--|--|--|--|--|--|--|--|--|--|--|--|--|--|--|--|--|--|--|--|--|--|--|--|----|
| 900 | | | | | | | | | | | | | | | | | | | | | | | | | | | | | | | | | | | | | | | | | | | | | | | | | | | | | | | | | | | | | | | | | | | | | | | | | | | | | | | | | | | | | | | | | | | | | | | | | | | | | | | | | | | | | | | | | | | | | | | | | | | | | | | | | | | | | | | | | | | | | | | | | | | | | | | | | | | | | | | | | | | | | | | | | | | | | | | | | | | | | | | | | | | | | | | | | | | | | | | | | | | | | | | | | | | | | | | | | | | | | | | | | | | | | | | | | | | | | | | | | | | | | | | | | | | | | | | | | | | | | | | | | | | | | | | | | | | | | | | | | | | | | | | | | | | | | | | | | | | | | | | | | | | | | | | | | | | | | | | | | | | | | | | | | | | | | | | | | | | | | | | | | | | | | | | | | | | | | | | | | | | | | | | | | | | | | | | | | | | | | | | | | | | | | | | | | | | | | | | | | | | | | | | | | | | | | | | | | | | | | | | | | | | | | | | | | | | | | | | | | | | | | | | | | | | | | | | | | | | | | | | | | | | | | | | | | | | | | | | | | | | | | | | | | | | | | | | | | | | | | | | | | | | | | | | | | | | | | | | | | | | | | | | | | | | | | | | | | | | | | | | | | | | | | | | | | | | | | | | | | | | | | | | | | | | | | | | | | | | | | | | | | | | | | | | | | | | | | | | | | | | | | | | | | | | | | | | | | | | | | | | | | | | | | | | | | | | | | | | | | | | | | | | | | | | | | | | | | | | | | | | | | | | | | | | | | | | | | | | | | | | </ |

[illegible]