

pellon®

*The Magic
in the Middle*

Urban Jungle Bag Advanced

Designed by
Sara Lawson
Sewn By
Sara Lawson

<http://sewsweetness.com>



This adorable bag features leather handles and accent detailing on the front and sides. With a zipper top, your essentials will not fall out. A flap pocket further adorns the front of this bag. Make several to coordinate with your outfits.

Fabrics Needed

Exterior Fabric	1/2 yard
Interior Fabric	1 yard

Materials Needed

Pellon® SF-101	2 yards
Pellon® 520F™	2 yards
OR	
Pellon® Peltex® 70	2 yards
Pellon® Fusible Fleece® 987F	1/ yard
Pellon® Tru-Grid™ 810	1 1/4 yards
20" zipper	
23" - 28" leather handles	
1/2" magnetic snap	
Thread	

Tools Needed

Sewing Machine and related supplies
Rotary cutting tools and supplies

Graphic Artist Alexandra Henry

PERMISSION IS GIVEN TO REPRODUCE FOR PERSONAL USE ONLY ©2011 - PCP Group, LLC

Instructions

Follow instructions on Tru-Grid Layout Page for cutting the pieces needed. In addition, cut two 2" x 2" squares of fleece.

Fusing the Fabrics

Fuse one Pellon® woven interfacing to the wrong side of three of the lining main panels, following manufacturer's instructions. Fuse the interfacing to the wrong side of the lining flap, the lining bottom and both lining side panels. Fuse one Pellon® woven interfacing to the wrong side of one exterior main panels. Fuse the interfacing to the two zipper panels.

Fuse the fusible fleece onto the woven interfacing on the exterior panel. Fuse the fusible fleece pieces to the two zipper panels.

Fuse one Pellon 520F Decor-Fuse™ to the remaining lining main panel. Fuse one Pellon 520F Decor-Fuse™ to one of the exterior main panels, the exterior flap, the exterior bottom and both the exterior side panels.

Assemble The Flap

Fold the lining flap in half lengthwise and finger press a crease. Place a mark 2" down from the longest straight edge.

Use the smaller half of the magnetic snap. Place the washer on the mark. Make marks on the flap where the slits will go. Using scissors, cut small slits where the marks are. Repeat this in the center of one of the 2" x 2" scraps of fleece.

HINT: Put a dab of Fray Check on the slits to reinforce the fabric.

Slid the prongs of the snap through the right side of the lining flap. Place the fleece square, then the washer over the prongs. Close prongs outward until they lay flat.



Place the lining and exterior flaps right sides together. Sew the curved edge using a 1/4" seam allowance. Cut notches in the curves every 1/2". Turn fabric right side out and press.



Topstitch the flap, 1/8" from the edge.



Attach the Accent Pieces

Press the top edges of the side accent pieces down by 1/2". Topstitch 1/4" from the edge.



Place the side accent pieces on the exterior side panels, lining up raw edges at the bottom. Topstitch on top of the side accent pieces 1/8" from the finished edge. Baste the three remaining sides of the side accents.



Stitch 1/4" from the edge on all four curved side accent pieces.



Turn edge under on stitching and press along the curve. .



Place the the curved accent pieces in the bottom left and right of the exterior main panel pieces. Topstitch 1/8" from curved edge. Topstitch again 1/4" from edge. Baste the two straight edges through all layers.



Assemble the Outer Pocket

Using the exterior main panel piece fused with the fusible fleece, fold panel in half and finger press a crease in the center. Measure 7" from bottom edge and place a mark for the magnetic snap. Insert other half of the snap following instructions for the first half.

Using the same exterior panel, trim off 1/2" from top of exterior panel. Trim 1/2" from one of the lining main panels. With pieces right sides together, sew along the edge just trimmed.



Turn Panels right side out and press. Topstitch 1/4" from edge.



Place panel just sewn against the right side of the lining main panel fused with 520F. The bottom unfinished edge of the panels should be even. Baste in place along both sides and the bottom.



With the exterior side of the flap facing up, center and baste the flap to the top of the lining main panel. Close the snap first. This unit is one of the "exterior main panels".



Take the completed Exterior Main Panel with the flap, and one of the handles. Place the left end of the handle up 5" from the bottom and in 2-1/2" from the left. Make sure the handle tab is free of the flap so that you are able to open and close it (the strap will be on top of the flap while the bag is worn). The placement may need to be adjusted depending on the handles chosen. Sew the handle tab in place. If the tabs are thick, you may need to hand-crank the needle, or even hand sew. Repeat to secure the right end of the handle.



The handles will be stitched through a small portion of the pocket; this is important so that the stitches go through the Pellon 520F to add stability to the area where the handle tabs are.

Inserting the Zipper

Cut the lining and exterior zipper panels in half lengthwise.

Place the resulting 2 pieces right sides together. With a fabric marker, measure and make a mark that is 1" in from that left-hand edge. Do the same for the right-hand edge. Sew from the mark to the corresponding edge (each line of stitching will be only 1" long), using a 5/8" seam allowance. Set lining zipper panel aside.



For Exterior panel only: Baste, using a 5/8" seam allowance between the two lines. Press seam open.

With the wrong side of your exterior zipper panel facing up, place the zipper face down on top of the zipper panel. The zipper teeth should be approximately on top of the basting stitches. Pin in place.



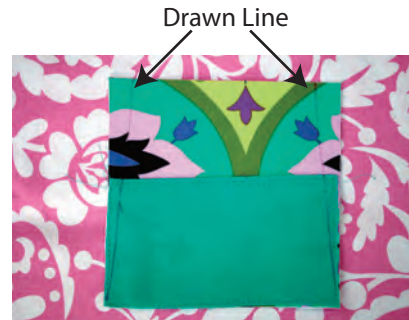
Stitch zipper to zipper panel. Turn fabric to right side and remove the basting stitches.



Assembly

Lay the exterior side panels on the table, right side facing up. Place a mark $\frac{3}{4}$ " in from top edge on both sides. Draw a line from the mark down to the corresponding corners as shown. Cut along both lines.

Repeat this step with the lining panels.



Sew the exterior side panels to the exterior zipper panel. Topstitch on the top of the exterior side panels, both $\frac{1}{4}$ " and $\frac{1}{8}$ " from edge.

Repeat this step with the lining panels.



Pin the long edge of the side panels/exterior zipper panel to one of the exterior main panels, lining up raw edges. When the top of the main panel is reached the side panels/exterior zipper panel will curve gently around the corner of the exterior main panel. Continue pinning curving on the other top edge of the main exterior panel. Sew the seam using a $\frac{1}{2}$ " seam allowance. Trim and clip top corners.

OPTIONAL: Sew the sides and the top first, leaving the corners until last to make the curves easier to stitch.

Repeat for other exterior main panel.

Repeat these steps for the lining using a $\frac{5}{8}$ " seam allowance.

Urban Jungle Bag Page Seven



Graphic Artist Alexandra Henry

PERMISSION IS GIVEN TO REPRODUCE FOR PERSONAL USE ONLY ©2011 - PCP Group, LLC

Unzip zipper. Line up raw edges of exterior bottom panel and the exterior of the bag. Pin in place. Sew all four sides, starting and stopping 1/2" from the corners. Trim corners.

Repeat this step for the lining and the lining bottom panel.



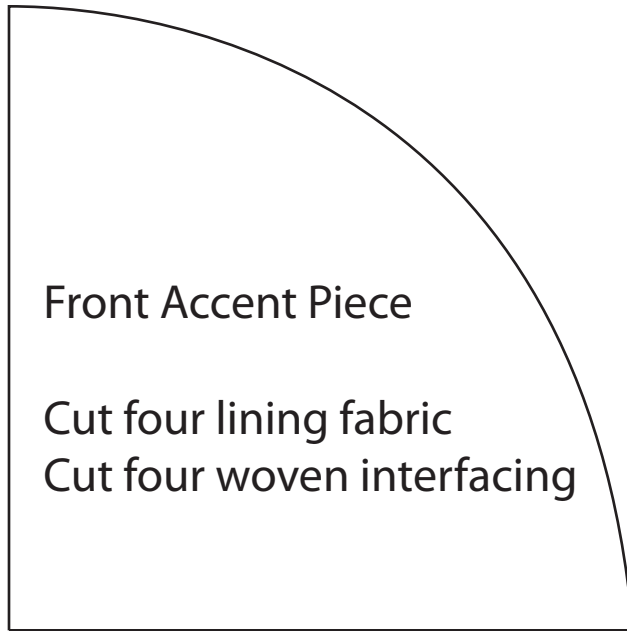
Turn exterior bag right side out and lining inside out. Place the lining inside the exterior bag, matching seams. Pin in place. Pin pressed edge of lining zipper panel against the wrong side of the zipper.

Hand sew the lining to the wrong side of the zipper.

Place a few tacking stitches on the right and left side of the bag to help hold the lining in place.



Urban Jungle Bag Template Page



Urban Jungle Bag Tru-Grid Layout

