

Golden Kite

www.goldenkite.com

1230 Trois Amis



This pattern may not be copied, sold or in any other way handled in any way that violates the international copyright laws. If you get hold of this pattern (and or this document) in any other way than via a direct download from www.goldenkite.com or via a mail from us, you should report that to us at legal_actions@goldenkite.com .

Copyright (c) 2008-, Golden Kite. All rights reserved.

Copyright (c) 2008-, Golden Kite (Golden K.)
Internet: www.goldenkite.com

e-mail: info@goldenkite.com

Instructions

Thank you for choosing Golden Kite products!
We hope you will have lots of fun with this cross-stitch pattern!

Fabric

Press the fabric with an iron if needed. A good thing to prevent the fabric from fraying is to machine zigzag the edges.

On large patterns, it is easiest to start from the upper left corner of the design. Make sure you have the proper margins before starting and that the fabric piece is of the correct size. The best way to verify this is to count all stitch positions on the fabric from the upper left corner downwards and to the right to make sure there is enough space for the design.

Some prefer to start in the center of the design instead. To locate the center of the fabric, fold the fabric in half both vertically and horizontally. The center is located where these two folds meet.

Stitches

Each length of DMC tread consists of six strands.

Use two of these strands for all stitches.

Note that some colors may be mixes (or blends) between two different pure colors. In that case take one strand of the two colors each and thread the two strands into the needle at the same time for stitching.

All stitches are full cross-stitches. No half-stitching and no back-stitching is necessary in this pattern.

All cross-stitches will be worked into the holes in the fabric from left to right. Always use the larger holes in the fabric for the stitches. Adjacent stitches should meet in the same hole. Make sure all stitches cross in the same direction.

Please be careful when washing the finished embroidery! The cotton thread may bleed when washed. Only hand wash it in lukewarm water. Remove excess water by roll it in a towel and lay it flat to air dry. Natural fabrics may shrink slightly when washed. We do not recommend washing the embroidery if not absolutely necessary and we take no responsibility for any damage that may occur.

When you start using this product you agree that Golden Kite (Golden K), or any people working for or in association with Golden Kite (Golden K), cannot be set responsible for any physical, mental, economical or other type of damage caused by this product (including this document, pattern, threads, needles and any other parts received by you from Golden Kite (Golden K)).

This pattern may not be copied, sold or in any other way handled in any way that violates the international copyright laws. If you get hold of this pattern (and or this document) in any other way than via a direct download from www.goldenkite.com or via a mail from us, you should report that to us at legal_actions@goldenkite.com.

Trois Amis

Stitch Count	
Horizontal:	599
Vertical:	425

Recommended Fabric Color
Antique White

This table tells the size of the pattern (without any margins) and the size of the fabric required to stitch the pattern (including recommended margins). 3 inch margins have been added on each side in the 'Including Margins' row.

The sizes are given for 14, 16 and 18 stitches per inch fabrics.

Make sure to use the 'Including Margins' row when cutting the piece of fabric to be used. Also make sure that 3 inch margins are enough for your stitching technique and add more margin areas if necessary.

	14				16				18			
	Width		Height		Width		Height		Width		Height	
	cm	inch	cm	inch	cm	inch	cm	inch	cm	inch	cm	inch
Pattern:	109	42.75	77	30.21	95	37.4	68	26.43	85	33.25	60	23.5
Including Margins:	125	49	93	37	111	44	84	33	101	40	76	30
	10				12				24			
	Width		Height		Width		Height		Width		Height	
	cm	inch	cm	inch	cm	inch	cm	inch	cm	inch	cm	inch
Pattern:	152	59.85	107	42.29	127	49.87	89	35.24	63	24.93	44	17.62
Including Margins:	168	66	123	49	143	56	105	42	79	31	60	24
	25				26				27			
	Width		Height		Width		Height		Width		Height	
	cm	inch	cm	inch	cm	inch	cm	inch	cm	inch	cm	inch
Pattern:	61	23.94	43	16.91	58	23.01	41	16.26	56	22.16	39	15.66
Including Margins:	77	30	59	23	74	30	57	23	72	29	55	22
	28				30				32			
	Width		Height		Width		Height		Width		Height	
	cm	inch	cm	inch	cm	inch	cm	inch	cm	inch	cm	inch
Pattern:	54	21.37	38	15.1	50	19.95	35	14.09	47	18.7	33	13.21
Including Margins:	70	28	54	22	66	26	51	21	63	25	49	20

Solid Color Stitches. Use two strands of the specified color for these stitches.

Symbol	DMC	Name
⋮	223	Shell Pink-LT
◆	319	Pistachio Green-VY DK
∩	372	Mustard-LT
∇	407	Desert Sand-DK
▼	413	Pewter Gray -DK
*	451	Shell Gray-DK
⊞	452	Shell Gray-MD
⌒	453	Shell Gray-LT
▨	501	Blue Green-DK
⌒	502	Blue Green
✱	503	Blue Green-MD
◇	522	Fern Green
—	523	Fern Green-LT
/	524	Fern Green-VY LT
▨	535	Ash Gray-VY LT
◦	543	Beige Brown-UL VY LT
◦	610	Drab Brown-DK
••	612	Drab Brown-LT
>	613	Drab Brown-VY LT
∅	640	Beige Gray-VY DK
×	642	Beige Gray-DK
L	644	Beige Gray-MD
⊞	645	Beaver Gray-VY DK
⊞	646	Beaver Gray-DK
◇	647	Beaver Gray-MD
∅	648	Beaver Gray-LT
6	758	Terra Cotta-VY LT
➔	801	Coffee Brown-DK
n	822	Beige Gray-LT
♥	838	Beige Brown-VY DK
↓	839	Beige Brown-DK
H	840	Beige Brown-MD
⊞	841	Beige Brown-LT
∅	842	Beige Brown-VY LT
⌒	844	Beaver Brown-UL DK
⌒	869	Hazelnut Brown-VY DK
●	898	Coffee Brown-VY DK
🍷	924	Gray Green-VY DK

◇	926	Gray Green-MD
H	927	Gray Green-LT
+	928	Gray Green-VY LT
■	934	Black Avocado Green
⊞	935	Avocado Green-DK
▣	938	Coffee Brown-UL DK
□	950	Desert Sand-LT
::	959	Sea Green-MD
⌘	992	Aquamarine-MD
∩	993	Aquamarine-LT
↑	3021	Brown Gray -VY DK
X	3022	Brown Gray -MD
∩	3023	Brown Gray -LT
	3024	Brown Gray -VY LT
●	3031	Mocha Brown-VY DK
≡	3032	Mocha Brown-MD
∩	3072	Beaver Gray-VY LT
+	3768	Gray Green-DK
/	3772	Desert Sand-VY DK
∞	3774	Desert Sand-VY LT
∩	3778	Terra Cotta-LT
∩	3779	Terra Cotta-UL VY LT
⌒	3781	Mocha Brown-DK
∩	3782	Mocha Brown-LT
◀	3787	Brown Gray -DK
✱	3790	Beige Gray-UL DK
⊞	3799	Pewter Gray -VY DK
∩	3812	Sea Green-VY DK
⊞	3813	Blue Green-LT
▲	3815	Celadon Green-DK
☆	3817	Celadon Green-LT
田	3828	Hazelnut Brown
▲	3847	Teal Green-DK
田	3849	Teal Green-LT
T	3859	Rosewood-LT
♣	3860	Cocoa
▲	3861	Cocoa-LT
▼	3862	Mocha Beige-DK
⊞	3863	Mocha Beige-MD
∩	3864	Mocha Beige-LT
u	3866	Mocha Brown-UL VY LT

Blend Stitches. Use one strand of each of DMC1 and DMC2 for these stitches.

Symbol	DMC1	Name1	DMC2	Name2
∩	645	Beaver Gray-VY DK	3768	Gray Green-DK
∩	640	Beige Gray-VY DK	645	Beaver Gray-VY DK
∩	407	Desert Sand-DK	758	Terra Cotta-VY LT
⊞	223	Shell Pink-LT	3861	Cocoa-LT
≡	407	Desert Sand-DK	3861	Cocoa-LT
Z	451	Shell Gray-DK	3861	Cocoa-LT
+	451	Shell Gray-DK	3740	Antique Violet-DK
◀	223	Shell Pink-LT	451	Shell Gray-DK

☾	645	Beaver Gray-VY DK	3740	Antique Violet-DK
⊕	839	Beige Brown-DK	3787	Brown Gray -DK
⌘	844	Beaver Brown-UL DK	3799	Pewter Gray -VY DK
⊕	413	Pewter Gray -DK	844	Beaver Brown-UL DK
■	413	Pewter Gray -DK	645	Beaver Gray -VY DK
☪	758	Terra Cotta-VY LT	3778	Terra Cotta-LT
⌘	414	Steel Gray -DK	647	Beaver Gray -MD
☪	610	Drab Brown-DK	839	Beige Brown-DK
☪	801	Coffee Brown-DK	898	Coffee Brown-VY DK
▣	3772	Desert Sand-VY DK	3828	Hazelnut Brown
α	738	Tan-VY LT	3864	Mocha Beige-LT
▣	640	Beige Gray-VY DK	3032	Mocha Brown-MD
⌘	3032	Mocha Brown-MD	3863	Mocha Beige-MD
β	842	Beige Brown-VY LT	3864	Mocha Beige-LT
⌘	503	Blue Green-MD	647	Beaver Gray -MD
☪	3021	Brown Gray -VY DK	3787	Brown Gray -DK
⌘	503	Blue Green-MD	646	Beaver Gray -DK
☪	841	Beige Brown-LT	3864	Mocha Beige-LT
e	758	Terra Cotta-VY LT	3864	Mocha Beige-LT
☪	3722	Shell Pink-MD	3859	Rosewood-LT
⌘	928	Gray Green-VY LT	503	Blue Green-MD
*	3787	Brown Gray -DK	3790	Beige Gray-UL DK
♥	453	Shell Gray-LT	842	Beige Brown-VY LT
☪	223	Shell Pink-LT	3828	Hazelnut Brown
☪	3781	Mocha Brown-DK	3787	Brown Gray -DK
⊕	3032	Mocha Brown-MD	3772	Desert Sand-VY DK
▲	502	Blue Green	645	Beaver Gray -VY DK
←	3808	Turquoise-UL VY DK	3847	Teal Green-DK
→	926	Gray Green-MD	992	Aquamarine-MD
↑	993	Aquamarine-LT	3849	Teal Green-LT
●	3768	Gray Green-DK	3848	Teal Green-MD
⊕	503	Blue Green-MD	926	Gray Green-MD
☪	3808	Turquoise-UL VY DK	3812	Sea Green-VY DK
☪	3750	Antique Blue-VY DK	3847	Teal Green-DK
▣	839	Beige Brown-DK	3860	Cocoa
«	3072	Beaver Gray-VY LT	3866	Mocha Brown-UL VY LT
↳	407	Desert Sand-DK	841	Beige Brown-LT
▲	535	Ash Gray -VY LT	844	Beaver Brown-UL DK
▣	844	Beaver Brown-UL DK	3021	Brown Gray -VY DK
☪	3809	Turquoise-VY DK	3847	Teal Green-DK
▶	3809	Turquoise-VY DK	3812	Sea Green-VY DK
▶	3812	Sea Green-VY DK	3847	Teal Green-DK
●	924	Gray Green-VY DK	3847	Teal Green-DK
♣	930	Antique Blue-DK	3847	Teal Green-DK
▣	943	Bright Green-MD	3808	Turquoise-UL VY DK
4	842	Beige Brown-VY LT	3782	Mocha Brown-LT
2	841	Beige Brown-LT	3782	Mocha Brown-LT
○	841	Beige Brown-LT	372	Mustard-LT
Δ	407	Desert Sand-DK	372	Mustard-LT
=	738	Tan-VY LT	842	Beige Brown-VY LT
☪	612	Drab Brown-LT	3032	Mocha Brown-MD
∩	3863	Mocha Beige-MD	612	Drab Brown-LT
∩	640	Beige Gray-VY DK	3860	Cocoa
☪	3032	Mocha Brown-MD	3860	Cocoa
?	372	Mustard-LT	3864	Mocha Beige-LT
)	950	Desert Sand-LT	842	Beige Brown-VY LT
ι	543	Beige Brown-UL VY LT	950	Desert Sand-LT
(543	Beige Brown-UL VY LT	842	Beige Brown-VY LT
∞	640	Beige Gray-VY DK	502	Blue Green

Copyright (c) 2008-, Golden Kite (Golden K.)

Internet: www.goldenkite.com

e-mail: info@goldenkite.com

☒	3848	Teal Green-MD	3808	Turquoise-UL VY DK
:	842	Beige Brown-VY LT	224	Shell Pink-VY LT
<	950	Desert Sand-LT	3779	Terra Cotta-UL VY LT
✕	3810	Turquoise-DK	3812	Sea Green-VY DK
☼	3816	Celadon Green-MD	3848	Teal Green-MD
△	758	Terra Cotta-VY LT	224	Shell Pink-VY LT
↓	3781	Mocha Brown-DK	838	Beige Brown-VY DK
♠	3815	Celadon Green-DK	3847	Teal Green-DK
◁	452	Shell Gray-MD	3864	Mocha Beige-LT
↑	543	Beige Brown-UL VY LT	3024	Brown Gray-VY LT
♾	822	Beige Gray-LT	3072	Beaver Gray-VY LT
1	822	Beige Gray-LT	3866	Mocha Brown-UL VY LT
◎	502	Blue Green	3848	Teal Green-MD
▲	3768	Gray Green-DK	502	Blue Green
✓	992	Aquamarine-MD	993	Aquamarine-LT
♠	414	Steel Gray-DK	503	Blue Green-MD
♣	561	Jade-VY DK	924	Gray Green-VY DK
♠	415	Pearl Gray	966	Baby Green-MD
5	928	Gray Green-VY LT	3813	Blue Green-LT
∅	927	Gray Green-LT	928	Gray Green-VY LT
^	3024	Brown Gray-VY LT	3072	Beaver Gray-VY LT
♠	452	Shell Gray-MD	524	Fern Green-VY LT
	3861	Cocoa-LT	647	Beaver Gray-MD
⇐	524	Fern Green-VY LT	648	Beaver Gray-LT
♠	502	Blue Green	926	Gray Green-MD
=	413	Pewter Gray-DK	502	Blue Green
☒	992	Aquamarine-MD	3808	Turquoise-UL VY DK
L	992	Aquamarine-MD	3809	Turquoise-VY DK
♠	992	Aquamarine-MD	3810	Turquoise-DK
◇	992	Aquamarine-MD	3811	Turquoise-VY LT
✱	924	Gray Green-VY DK	992	Aquamarine-MD
✕	924	Gray Green-VY DK	3808	Turquoise-UL VY DK
☼	3812	Sea Green-VY DK	924	Gray Green-VY DK
♦♦	645	Beaver Gray-VY DK	3860	Cocoa
♠	451	Shell Gray-DK	645	Beaver Gray-VY DK
❖	451	Shell Gray-DK	3721	Shell Pink-DK
//	3726	Antique Mauve-DK	451	Shell Gray-DK
‡	3859	Rosewood-LT	3861	Cocoa-LT
∇	3859	Rosewood-LT	407	Desert Sand-DK
♠	758	Terra Cotta-VY LT	3861	Cocoa-LT
♠	992	Aquamarine-MD	503	Blue Green-MD
◎	503	Blue Green-MD	3849	Teal Green-LT
	928	Gray Green-VY LT	3849	Teal Green-LT
m	966	Baby Green-MD	992	Aquamarine-MD
•	966	Baby Green-MD	3811	Turquoise-VY LT
♠	414	Steel Gray-DK	3849	Teal Green-LT
‡	415	Pearl Gray	992	Aquamarine-MD
c	3811	Turquoise-VY LT	3849	Teal Green-LT
⇒	3811	Turquoise-VY LT	3813	Blue Green-LT
g	415	Pearl Gray	3813	Blue Green-LT
▷	966	Baby Green-MD	3024	Brown Gray-VY LT
‡	648	Beaver Gray-LT	966	Baby Green-MD
v	648	Beaver Gray-LT	3024	Brown Gray-VY LT
★	3721	Shell Pink-DK	223	Shell Pink-LT

This table specifies how much thread of each color is required to stitch this pattern. It is good to know that one complete DMC skein contains 313 inches (795 cm) thread.

DMC	Name	Usage (cm)	Usage (inch)	Usage (cm)	Usage (inch)	Usage (cm)	Usage (inch)
		14		16		18	
223	Shell Pink-LT	280	110	266	104	240	94
224	Shell Pink-VY LT	162	63	155	61	139	54
319	Pistachio Green-VY DK	10	3	10	3	9	3
372	Mustard-LT	257	101	244	96	220	86
407	Desert Sand-DK	221	87	210	82	189	74
413	Pewter Gray -DK	1070	421	1019	401	917	361
414	Steel Gray-DK	549	216	523	205	471	185
415	Pearl Gray	791	311	753	296	678	266
451	Shell Gray-DK	1120	440	1067	420	960	377
452	Shell Gray-MD	641	252	611	240	549	216
453	Shell Gray-LT	652	256	621	244	559	220
501	Blue Green-DK	167	65	159	62	143	56
502	Blue Green	837	329	798	314	718	282
503	Blue Green-MD	1883	741	1793	705	1614	635
522	Fern Green	49	19	47	18	42	16
523	Fern Green-LT	85	33	81	31	73	28
524	Fern Green-VY LT	1241	488	1182	465	1064	418
535	Ash Gray -VY LT	467	183	444	174	400	157
543	Beige Brown-UL VY LT	2546	1002	2424	954	2182	859
561	Jade-VY DK	91	35	87	34	78	30
610	Drab Brown-DK	210	82	200	78	180	70
612	Drab Brown-LT	177	69	169	66	152	59
613	Drab Brown-VY LT	137	53	130	51	117	46
640	Beige Gray-VY DK	1165	458	1110	437	999	393
642	Beige Gray-DK	347	136	330	129	297	116
644	Beige Gray-MD	422	166	402	158	362	142
645	Beaver Gray-VY DK	1796	707	1711	673	1540	606
646	Beaver Gray-DK	1230	484	1171	461	1054	414
647	Beaver Gray-MD	1864	733	1775	698	1598	629
648	Beaver Gray-LT	3268	1286	3112	1225	2801	1102
738	Tan-VY LT	169	66	161	63	145	57
758	Terra Cotta-VY LT	187	73	178	70	160	62
801	Coffee Brown-DK	414	162	394	155	354	139
822	Beige Gray-LT	1557	612	1482	583	1334	525
838	Beige Brown-VY DK	811	319	773	304	695	273
839	Beige Brown-DK	597	235	569	224	512	201
840	Beige Brown-MD	260	102	247	97	223	87
841	Beige Brown-LT	642	252	611	240	550	216
842	Beige Brown-VY LT	2952	1162	2812	1107	2530	996
844	Beaver Brown-UL DK	1410	555	1343	528	1209	475
869	Hazelnut Brown-VY DK	6	2	5	1	5	1
898	Coffee Brown-VY DK	626	246	596	234	537	211
924	Gray Green-VY DK	979	385	932	366	839	330
926	Gray Green-MD	936	368	891	350	802	315
927	Gray Green-LT	756	297	720	283	648	255
928	Gray Green-VY LT	1724	678	1641	646	1477	581
930	Antique Blue-DK	515	202	490	192	441	173
934	Black Avocado Green	96	37	92	36	82	32
935	Avocado Green-DK	37	14	35	13	32	12
938	Coffee Brown-UL DK	231	90	220	86	198	77
943	Bright Green-MD	17	6	16	6	14	5
950	Desert Sand-LT	737	290	702	276	632	248
959	Sea Green-MD	40	15	38	14	34	13
966	Baby Green-MD	1576	620	1501	590	1351	531

Copyright (c) 2008-, Golden Kite (Golden K.)

Internet: www.goldenkite.com

e-mail: info@goldenkite.com

992	Aquamarine-MD	883	347	841	331	757	298
993	Aquamarine-LT	407	160	387	152	349	137
3021	Brown Gray -VY DK	663	261	632	248	568	223
3022	Brown Gray -MD	427	168	406	159	366	144
3023	Brown Gray -LT	1184	466	1128	444	1015	399
3024	Brown Gray -VY LT	6032	2374	5745	2261	5170	2035
3031	Mocha Brown-VY DK	97	38	92	36	83	32
3032	Mocha Brown-MD	1184	466	1128	444	1015	399
3072	Beaver Gray-VY LT	2647	1042	2521	992	2269	893
3721	Shell Pink-DK	67	26	64	25	57	22
3722	Shell Pink-MD	11	4	10	3	9	3
3726	Antique Mauve-DK	104	40	99	38	89	35
3740	Antique Violet-DK	119	46	113	44	102	40
3750	Antique Blue-VY DK	119	46	114	44	102	40
3768	Gray Green-DK	569	224	542	213	488	192
3772	Desert Sand-VY DK	106	41	101	39	91	35
3774	Desert Sand-VY LT	271	106	258	101	232	91
3778	Terra Cotta-LT	27	10	26	10	23	9
3779	Terra Cotta-UL VY LT	30	11	29	11	26	10
3781	Mocha Brown-DK	965	379	919	361	827	325
3782	Mocha Brown-LT	802	315	764	300	687	270
3787	Brown Gray -DK	1350	531	1285	505	1157	455
3790	Beige Gray-UL DK	565	222	538	211	484	190
3799	Pewter Gray -VY DK	368	144	350	137	315	124
3808	Turquoise-UL VY DK	546	214	520	204	468	184
3809	Turquoise-VY DK	95	37	91	35	82	32
3810	Turquoise-DK	14	5	14	5	12	4
3811	Turquoise-VY LT	666	262	634	249	571	224
3812	Sea Green-VY DK	643	253	612	240	551	216
3813	Blue Green-LT	1280	503	1219	479	1097	431
3815	Celadon Green-DK	47	18	45	17	40	15
3816	Celadon Green-MD	55	21	53	20	47	18
3817	Celadon Green-LT	124	48	118	46	106	41
3828	Hazelnut Brown	45	17	43	16	38	14
3847	Teal Green-DK	1487	585	1416	557	1274	501
3848	Teal Green-MD	211	83	201	79	181	71
3849	Teal Green-LT	645	253	614	241	553	217
3859	Rosewood-LT	107	42	102	40	92	36
3860	Cocoa	1063	418	1012	398	911	358
3861	Cocoa-LT	814	320	775	305	697	274
3862	Mocha Beige-DK	40	15	38	14	34	13
3863	Mocha Beige-MD	255	100	243	95	219	86
3864	Mocha Beige-LT	842	331	802	315	722	284
3866	Mocha Brown-UL VY LT	2814	1107	2680	1055	2412	949

Extended thread usage table.							
DMC	Name	Usage (cm)	Usage (inch)	Usage (cm)	Usage (inch)	Usage (cm)	Usage (inch)
		10		12		24	
223	Shell Pink-LT	432	169	360	141	180	71
224	Shell Pink-VY LT	250	97	209	81	104	41
319	Pistachio Green-VY DK	16	5	14	5	7	2
372	Mustard-LT	396	155	330	129	165	65
407	Desert Sand-DK	340	133	284	111	142	56
413	Pewter Gray -DK	1651	650	1376	542	688	271
414	Steel Gray-DK	848	333	707	278	353	139
415	Pearl Gray	1220	479	1017	399	509	200

451	Shell Gray-DK	1728	679	1440	566	720	283
452	Shell Gray-MD	988	389	824	324	412	162
453	Shell Gray-LT	1006	396	839	330	419	165
501	Blue Green-DK	257	101	215	84	107	42
502	Blue Green	1292	508	1077	423	539	212
503	Blue Green-MD	2905	1143	2421	953	1211	476
522	Fern Green	76	29	63	24	32	12
523	Fern Green-LT	131	50	110	42	55	21
524	Fern Green-VY LT	1915	752	1596	627	798	314
535	Ash Gray-VY LT	720	283	600	236	300	118
543	Beige Brown-UL VY LT	3928	1546	3273	1289	1637	644
561	Jade-VY DK	140	54	117	45	59	23
610	Drab Brown-DK	324	126	270	105	135	53
612	Drab Brown-LT	274	106	228	89	114	44
613	Drab Brown-VY LT	211	83	176	69	88	35
640	Beige Gray-VY DK	1798	707	1499	590	749	295
642	Beige Gray-DK	535	209	446	174	223	87
644	Beige Gray-MD	652	256	543	213	272	107
645	Beaver Gray-VY DK	2772	1091	2310	909	1155	455
646	Beaver Gray-DK	1897	745	1581	621	791	311
647	Beaver Gray-MD	2876	1132	2397	944	1199	472
648	Beaver Gray-LT	5042	1984	4202	1653	2101	827
738	Tan-VY LT	261	103	218	86	109	43
758	Terra Cotta-VY LT	288	112	240	93	120	47
801	Coffee Brown-DK	637	250	531	209	266	104
822	Beige Gray-LT	2401	945	2001	788	1001	394
838	Beige Brown-VY DK	1251	491	1043	410	521	205
839	Beige Brown-DK	922	362	768	302	384	151
840	Beige Brown-MD	401	157	335	131	167	65
841	Beige Brown-LT	990	389	825	324	413	162
842	Beige Brown-VY LT	4554	1793	3795	1494	1898	747
844	Beaver Brown-UL DK	2176	855	1814	713	907	356
869	Hazelnut Brown-VY DK	9	2	8	2	4	1
898	Coffee Brown-VY DK	967	380	806	317	403	158
924	Gray Green-VY DK	1510	594	1259	495	629	248
926	Gray Green-MD	1444	567	1203	473	602	236
927	Gray Green-LT	1166	459	972	383	486	191
928	Gray Green-VY LT	2659	1046	2216	872	1108	436
930	Antique Blue-DK	794	311	662	260	331	130
934	Black Avocado Green	148	58	123	48	62	24
935	Avocado Green-DK	58	22	48	18	24	9
938	Coffee Brown-UL DK	356	139	297	116	149	58
943	Bright Green-MD	25	9	21	8	11	4
950	Desert Sand-LT	1138	446	948	372	474	186
959	Sea Green-MD	61	23	51	20	26	10
966	Baby Green-MD	2432	956	2027	797	1013	398
992	Aquamarine-MD	1363	536	1136	447	568	224
993	Aquamarine-LT	628	247	524	206	262	103
3021	Brown Gray -VY DK	1022	401	852	335	426	167
3022	Brown Gray -MD	659	259	549	216	275	108
3023	Brown Gray -LT	1827	718	1523	599	761	299
3024	Brown Gray -VY LT	9306	3663	7755	3053	3878	1526
3031	Mocha Brown-VY DK	149	58	125	48	62	24
3032	Mocha Brown-MD	1827	718	1523	599	761	299
3072	Beaver Gray-VY LT	4084	1607	3404	1340	1702	670
3721	Shell Pink-DK	103	40	86	33	43	17
3722	Shell Pink-MD	16	5	14	5	7	2
3726	Antique Mauve-DK	160	63	134	53	67	26
3740	Antique Violet-DK	184	72	153	60	77	30

Copyright (c) 2008-, Golden Kite (Golden K.)

Internet: www.goldenkite.com

e-mail: info@goldenkite.com

3750	Antique Blue-VY DK	184	72	153	60	77	30
3768	Gray Green-DK	878	346	732	288	366	144
3772	Desert Sand-VY DK	164	63	137	53	68	26
3774	Desert Sand-VY LT	418	164	348	137	174	68
3778	Terra Cotta-LT	41	16	35	14	17	7
3779	Terra Cotta-UL VY LT	47	18	39	15	20	8
3781	Mocha Brown-DK	1489	585	1241	488	620	244
3782	Mocha Brown-LT	1237	486	1031	405	515	203
3787	Brown Gray -DK	2083	819	1736	683	868	341
3790	Beige Gray-UL DK	871	342	726	285	363	143
3799	Pewter Gray -VY DK	567	223	473	186	236	93
3808	Turquoise-UL VY DK	842	331	702	276	351	138
3809	Turquoise-VY DK	148	58	123	48	62	24
3810	Turquoise-DK	22	7	18	6	9	3
3811	Turquoise-VY LT	1028	403	857	336	428	168
3812	Sea Green-VY DK	992	389	827	324	413	162
3813	Blue Green-LT	1975	776	1646	647	823	323
3815	Celadon Green-DK	72	27	60	23	30	11
3816	Celadon Green-MD	85	32	71	27	35	14
3817	Celadon Green-LT	191	74	159	62	80	31
3828	Hazelnut Brown	68	25	57	21	29	11
3847	Teal Green-DK	2293	902	1911	752	956	376
3848	Teal Green-MD	326	128	272	107	136	53
3849	Teal Green-LT	995	391	830	326	415	163
3859	Rosewood-LT	166	65	138	54	69	27
3860	Cocoa	1640	644	1367	537	683	269
3861	Cocoa-LT	1255	493	1046	411	523	206
3862	Mocha Beige-DK	61	23	51	20	26	10
3863	Mocha Beige-MD	394	155	329	129	164	65
3864	Mocha Beige-LT	1300	511	1083	426	542	213
3866	Mocha Brown-UL VY LT	4342	1708	3618	1424	1809	712

Extended thread usage table.

DMC	Name	Usage (cm)	Usage (inch)	Usage (cm)	Usage (inch)	Usage (cm)	Usage (inch)
		25		26		27	
223	Shell Pink-LT	173	68	166	65	160	63
224	Shell Pink-VY LT	100	39	96	37	93	36
319	Pistachio Green-VY DK	6	2	6	2	6	2
372	Mustard-LT	158	62	152	60	147	57
407	Desert Sand-DK	136	53	131	51	126	49
413	Pewter Gray -DK	660	260	635	250	611	241
414	Steel Gray-DK	339	133	326	128	314	123
415	Pearl Gray	488	192	469	184	452	177
451	Shell Gray-DK	691	271	665	261	640	251
452	Shell Gray-MD	395	156	380	150	366	144
453	Shell Gray-LT	402	158	387	152	373	147
501	Blue Green-DK	103	40	99	39	95	37
502	Blue Green	517	203	497	195	479	188
503	Blue Green-MD	1162	457	1117	440	1076	423
522	Fern Green	30	12	29	11	28	11
523	Fern Green-LT	53	20	51	19	49	19
524	Fern Green-VY LT	766	301	737	289	709	279
535	Ash Gray -VY LT	288	113	277	109	267	105
543	Beige Brown-UL VY LT	1571	618	1511	595	1455	573
561	Jade-VY DK	56	22	54	21	52	20
610	Drab Brown-DK	130	50	125	48	120	47

612	Drab Brown-LT	109	42	105	41	101	39
613	Drab Brown-VY LT	84	33	81	32	78	31
640	Beige Gray-VY DK	719	283	692	272	666	262
642	Beige Gray-DK	214	84	206	80	198	77
644	Beige Gray-MD	261	102	251	98	241	95
645	Beaver Gray-VY DK	1109	436	1066	420	1027	404
646	Beaver Gray-DK	759	298	730	287	703	276
647	Beaver Gray-MD	1151	453	1106	435	1065	419
648	Beaver Gray-LT	2017	793	1939	763	1867	735
738	Tan-VY LT	104	41	100	39	97	38
758	Terra Cotta-VY LT	115	45	111	43	107	41
801	Coffee Brown-DK	255	100	245	96	236	93
822	Beige Gray-LT	960	378	924	363	889	350
838	Beige BrownVY DK	500	197	481	189	463	182
839	Beige Brown-DK	369	145	354	139	341	134
840	Beige BrownMD	161	63	154	60	149	58
841	Beige BrownLT	396	156	381	150	367	144
842	Beige BrownVY LT	1822	717	1752	690	1687	664
844	Beaver Brown-UL DK	870	342	837	329	806	317
869	Hazelnut Brown-VY DK	4	1	3	1	3	1
898	Coffee Brown-VY DK	387	152	372	146	358	141
924	Gray Green-VY DK	604	238	581	228	559	220
926	Gray Green-MD	577	227	555	218	535	210
927	Gray Green-LT	467	184	449	177	432	170
928	Gray Green-VY LT	1063	418	1023	402	985	387
930	Antique Blue-DK	318	125	305	120	294	115
934	Black Avocado Green	59	23	57	22	55	21
935	Avocado Green-DK	23	9	22	8	21	8
938	Coffee Brown-UL DK	143	55	137	53	132	51
943	Bright Green-MD	10	4	10	3	9	3
950	Desert Sand-LT	455	179	438	172	421	165
959	Sea Green-MD	24	9	24	9	23	9
966	Baby Green-MD	973	382	935	368	901	354
992	Aquamarine-MD	545	215	524	206	505	199
993	Aquamarine-LT	251	99	242	95	233	91
3021	Brown Gray -VY DK	409	161	393	154	379	149
3022	Brown Gray -MD	264	104	253	100	244	96
3023	Brown Gray -LT	731	287	703	276	677	266
3024	Brown Gray -VY LT	3722	1465	3579	1409	3447	1357
3031	Mocha Brown-VY DK	60	23	57	22	55	21
3032	Mocha Brown-MD	731	287	703	276	677	266
3072	Beaver Gray-VY LT	1634	643	1571	618	1513	595
3721	Shell Pink- DK	41	16	39	15	38	15
3722	Shell Pink- MD	6	2	6	2	6	2
3726	Antique Mauve-DK	64	25	62	24	59	23
3740	Antique Violet-DK	73	29	71	28	68	27
3750	Antique Blue-VY DK	73	29	71	28	68	27
3768	Gray Green-DK	351	138	338	133	325	128
3772	Desert Sand-VY DK	66	25	63	24	61	23
3774	Desert Sand-VY LT	167	66	161	63	155	61
3778	Terra Cotta-LT	17	6	16	6	15	6
3779	Terra Cotta-UL VY LT	19	7	18	7	17	7
3781	Mocha Brown-DK	595	234	573	225	551	217
3782	Mocha Brown-LT	495	194	476	187	458	180
3787	Brown Gray -DK	833	328	801	315	771	303
3790	Beige Gray-UL DK	348	137	335	132	323	127
3799	Pewter Gray -VY DK	227	89	218	86	210	83
3808	Turquoise-UL VY DK	337	132	324	127	312	123
3809	Turquoise-VY DK	59	23	57	22	55	21

Copyright (c) 2008-, Golden Kite (Golden K.)

Internet: www.goldenkite.com

e-mail: info@goldenkite.com

3810	Turquoise-DK	9	3	8	3	8	3
3811	Turquoise-VY LT	411	161	395	155	381	149
3812	Sea Green-VY DK	397	156	381	150	367	144
3813	Blue Green-LT	790	310	759	298	731	287
3815	Celadon Green-DK	29	11	28	10	27	10
3816	Celadon Green-MD	34	13	33	12	31	12
3817	Celadon Green-LT	76	30	73	28	71	27
3828	Hazelnut Brown	27	10	26	10	25	9
3847	Teal Green-DK	917	361	882	347	849	334
3848	Teal Green-MD	130	51	125	49	121	47
3849	Teal Green-LT	398	156	383	150	369	145
3859	Rosewood-LT	66	26	64	25	61	24
3860	Cocoa	656	258	631	248	607	239
3861	Cocoa-LT	502	197	483	190	465	183
3862	Mocha Beige-DK	24	9	24	9	23	9
3863	Mocha Beige-MD	158	62	152	60	146	57
3864	Mocha Beige-LT	520	204	500	197	481	189
3866	Mocha Brown-UL VY LT	1737	683	1670	657	1608	633

Extended thread usage table.

DMC	Name	Usage (cm)	Usage (inch)	Usage (cm)	Usage (inch)	Usage (cm)	Usage (inch)
		28		30		32	
223	Shell Pink-LT	154	60	144	56	135	53
224	Shell Pink-VY LT	89	35	83	32	78	30
319	Pistachio Green-VY DK	6	2	5	2	5	2
372	Mustard-LT	141	55	132	52	124	48
407	Desert Sand-DK	122	48	113	44	106	42
413	Pewter Gray -DK	590	232	550	217	516	203
414	Steel Gray-DK	303	119	283	111	265	104
415	Pearl Gray	436	171	407	160	381	150
451	Shell Gray-DK	617	242	576	226	540	212
452	Shell Gray-MD	353	139	329	130	309	122
453	Shell Gray-LT	359	141	335	132	314	124
501	Blue Green-DK	92	36	86	34	80	32
502	Blue Green	462	181	431	169	404	159
503	Blue Green-MD	1038	408	968	381	908	357
522	Fern Green	27	10	25	10	24	9
523	Fern Green-LT	47	18	44	17	41	16
524	Fern Green-VY LT	684	269	638	251	599	235
535	Ash Gray -VY LT	257	101	240	94	225	88
543	Beige Brown-UL VY LT	1403	552	1309	515	1227	483
561	Jade-VY DK	50	19	47	18	44	17
610	Drab Brown-DK	116	45	108	42	101	39
612	Drab Brown-LT	98	38	91	35	86	33
613	Drab Brown-VY LT	75	30	70	28	66	26
640	Beige Gray-VY DK	642	253	599	236	562	221
642	Beige Gray-DK	191	75	178	70	167	65
644	Beige Gray-MD	233	91	217	85	204	80
645	Beaver Gray-VY DK	990	390	924	364	866	341
646	Beaver Gray-DK	678	266	632	248	593	233
647	Beaver Gray-MD	1027	404	959	377	899	354
648	Beaver Gray-LT	1801	708	1681	661	1576	620
738	Tan-VY LT	93	37	87	34	82	32
758	Terra Cotta-VY LT	103	40	96	37	90	35
801	Coffee Brown-DK	228	89	212	83	199	78
822	Beige Gray-LT	858	338	800	315	750	295
838	Beige Brown-VY DK	447	176	417	164	391	154

Copyright (c) 2008-, Golden Kite (Golden K.)

Internet: www.goldenkite.com

e-mail: info@goldenkite.com

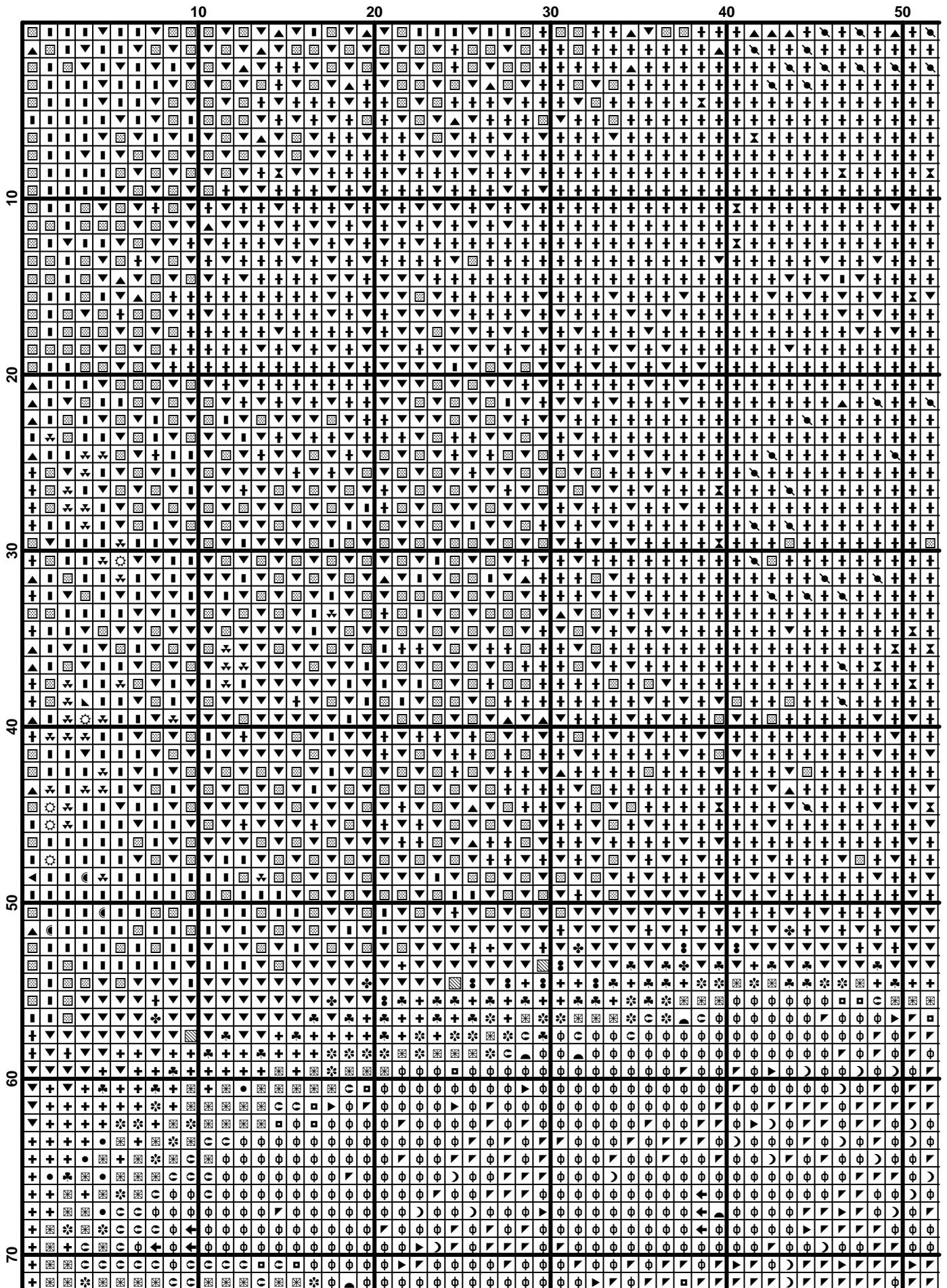
839	Beige Brown-DK	329	129	307	121	288	113
840	Beige Brown-MD	143	56	134	52	125	49
841	Beige Brown-LT	354	139	330	130	309	122
842	Beige Brown-VY LT	1626	640	1518	598	1423	560
844	Beaver Brown-UL DK	777	305	725	285	680	267
869	Hazelnut Brown-VY DK	3	1	3	1	3	1
898	Coffee Brown-VY DK	345	136	322	127	302	119
924	Gray Green-VY DK	539	212	503	198	472	186
926	Gray Green-MD	516	203	481	189	451	177
927	Gray Green-LT	417	164	389	153	365	143
928	Gray Green-VY LT	950	374	886	349	831	327
930	Antique Blue-DK	284	111	265	104	248	97
934	Black Avocado Green	53	21	49	19	46	18
935	Avocado Green-DK	21	8	19	7	18	7
938	Coffee Brown-UL DK	127	50	119	46	111	43
943	Bright Green-MD	9	3	8	3	8	3
950	Desert Sand-LT	406	159	379	149	356	140
959	Sea Green-MD	22	8	20	8	19	7
966	Baby Green-MD	869	341	811	319	760	299
992	Aquamarine-MD	487	192	454	179	426	168
993	Aquamarine-LT	224	88	209	82	196	77
3021	Brown Gray -VY DK	365	143	341	134	320	125
3022	Brown Gray -MD	235	93	220	86	206	81
3023	Brown Gray -LT	653	257	609	239	571	224
3024	Brown Gray -VY LT	3324	1308	3102	1221	2908	1145
3031	Mocha Brown-VY DK	53	21	50	19	47	18
3032	Mocha Brown-MD	653	257	609	239	571	224
3072	Beaver Gray-VY LT	1459	574	1361	536	1276	502
3721	Shell Pink-DK	37	14	34	13	32	12
3722	Shell Pink-MD	6	2	5	2	5	2
3726	Antique Mauve-DK	57	23	53	21	50	20
3740	Antique Violet-DK	66	26	61	24	57	23
3750	Antique Blue-VY DK	66	26	61	24	57	23
3768	Gray Green-DK	314	123	293	115	275	108
3772	Desert Sand-VY DK	59	23	55	21	51	20
3774	Desert Sand-VY LT	149	59	139	55	131	51
3778	Terra Cotta-LT	15	6	14	5	13	5
3779	Terra Cotta-UL VY LT	17	6	16	6	15	6
3781	Mocha Brown-DK	532	209	496	195	465	183
3782	Mocha Brown-LT	442	174	412	162	386	152
3787	Brown Gray -DK	744	293	694	273	651	256
3790	Beige Gray-UL DK	311	122	290	114	272	107
3799	Pewter Gray -VY DK	203	80	189	74	177	70
3808	Turquoise-UL VY DK	301	118	281	110	263	104
3809	Turquoise-VY DK	53	21	49	19	46	18
3810	Turquoise-DK	8	3	7	2	7	2
3811	Turquoise-VY LT	367	144	343	134	321	126
3812	Sea Green-VY DK	354	139	331	130	310	122
3813	Blue Green-LT	705	277	658	259	617	242
3815	Celadon Green-DK	26	10	24	9	23	8
3816	Celadon Green-MD	30	12	28	11	26	10
3817	Celadon Green-LT	68	26	64	25	60	23
3828	Hazelnut Brown	24	9	23	8	21	8
3847	Teal Green-DK	819	322	764	301	717	282
3848	Teal Green-MD	116	46	109	43	102	40
3849	Teal Green-LT	356	140	332	130	311	122
3859	Rosewood-LT	59	23	55	22	52	20
3860	Cocoa	586	230	547	215	512	201
3861	Cocoa-LT	448	176	418	164	392	154

Copyright (c) 2008-, Golden Kite (Golden K.)

Internet: www.goldenkite.com

e-mail: info@goldenkite.com

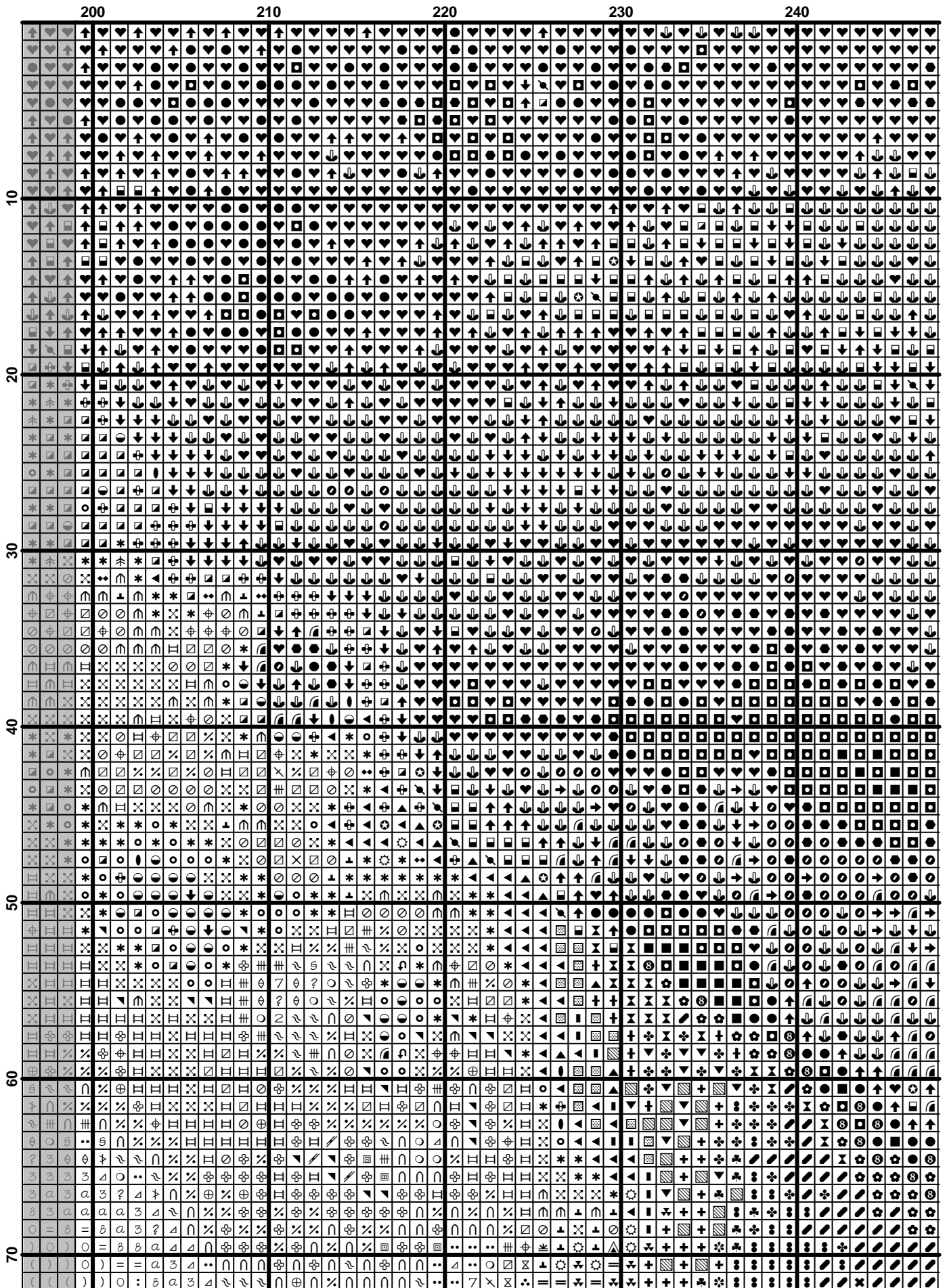
3862	Mocha Beige-DK	22	8	20	8	19	7
3863	Mocha Beige-MD	141	55	131	52	123	48
3864	Mocha Beige-LT	464	183	433	170	406	160
3866	Mocha Brown-UL VY LT	1551	610	1447	569	1357	534

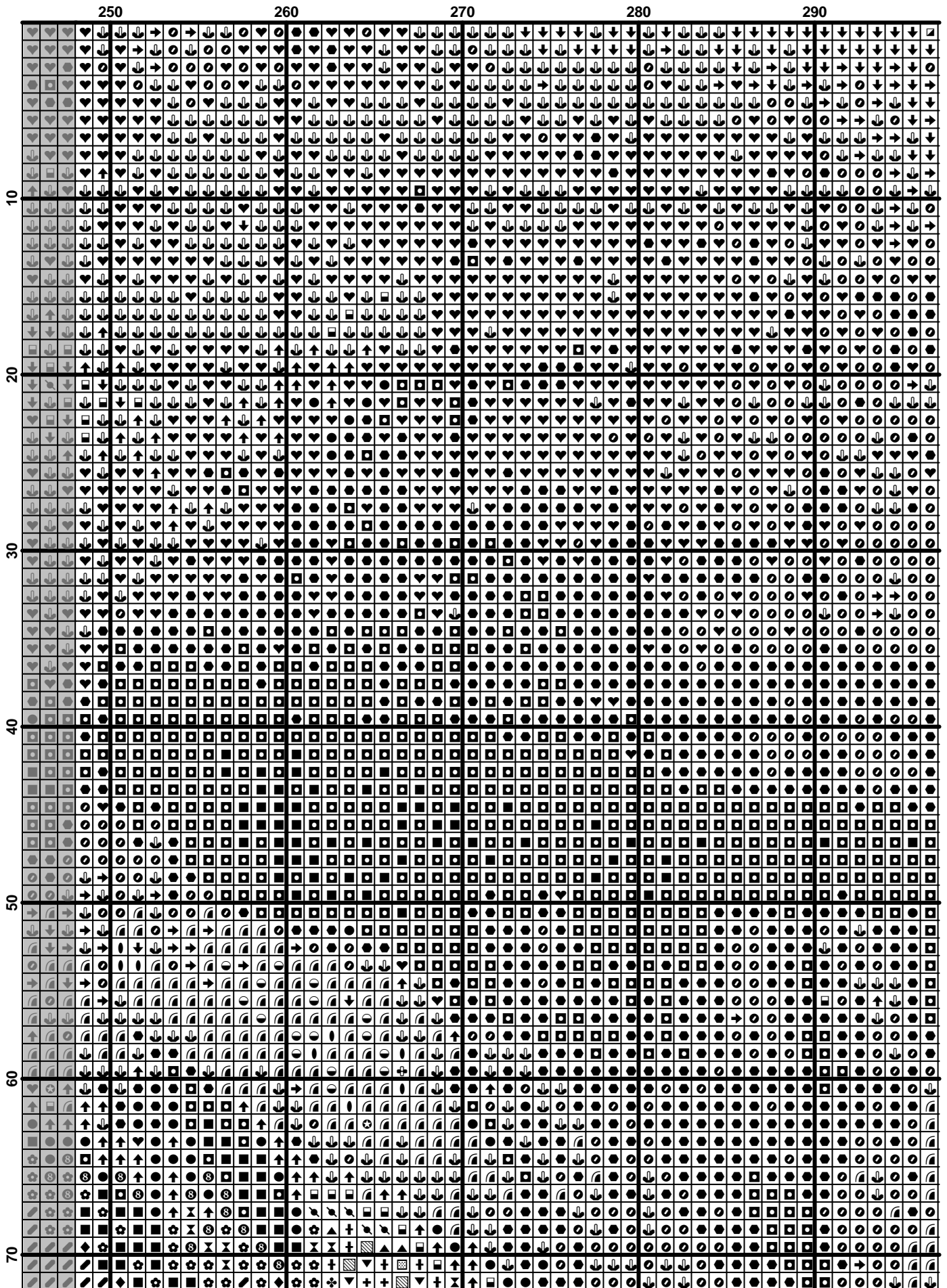


	50	60	70	80	90	100
10						
20						
30						
40						
50						
60						
70						

	100	110	120	130	140	150
10	[Grid]	[Grid]	[Grid]	[Grid]	[Grid]	[Grid]
20	[Grid]	[Grid]	[Grid]	[Grid]	[Grid]	[Grid]
30	[Grid]	[Grid]	[Grid]	[Grid]	[Grid]	[Grid]
40	[Grid]	[Grid]	[Grid]	[Grid]	[Grid]	[Grid]
50	[Grid]	[Grid]	[Grid]	[Grid]	[Grid]	[Grid]
60	[Grid]	[Grid]	[Grid]	[Grid]	[Grid]	[Grid]
70	[Grid]	[Grid]	[Grid]	[Grid]	[Grid]	[Grid]

	150	160	170	180	190
10	↓	↑	↑	↑	↑
20	↑	↑	↑	↑	↑
30	↑	↑	↑	↑	↑
40	↑	↑	↑	↑	↑
50	↑	↑	↑	↑	↑
60	↑	↑	↑	↑	↑
70	↑	↑	↑	↑	↑

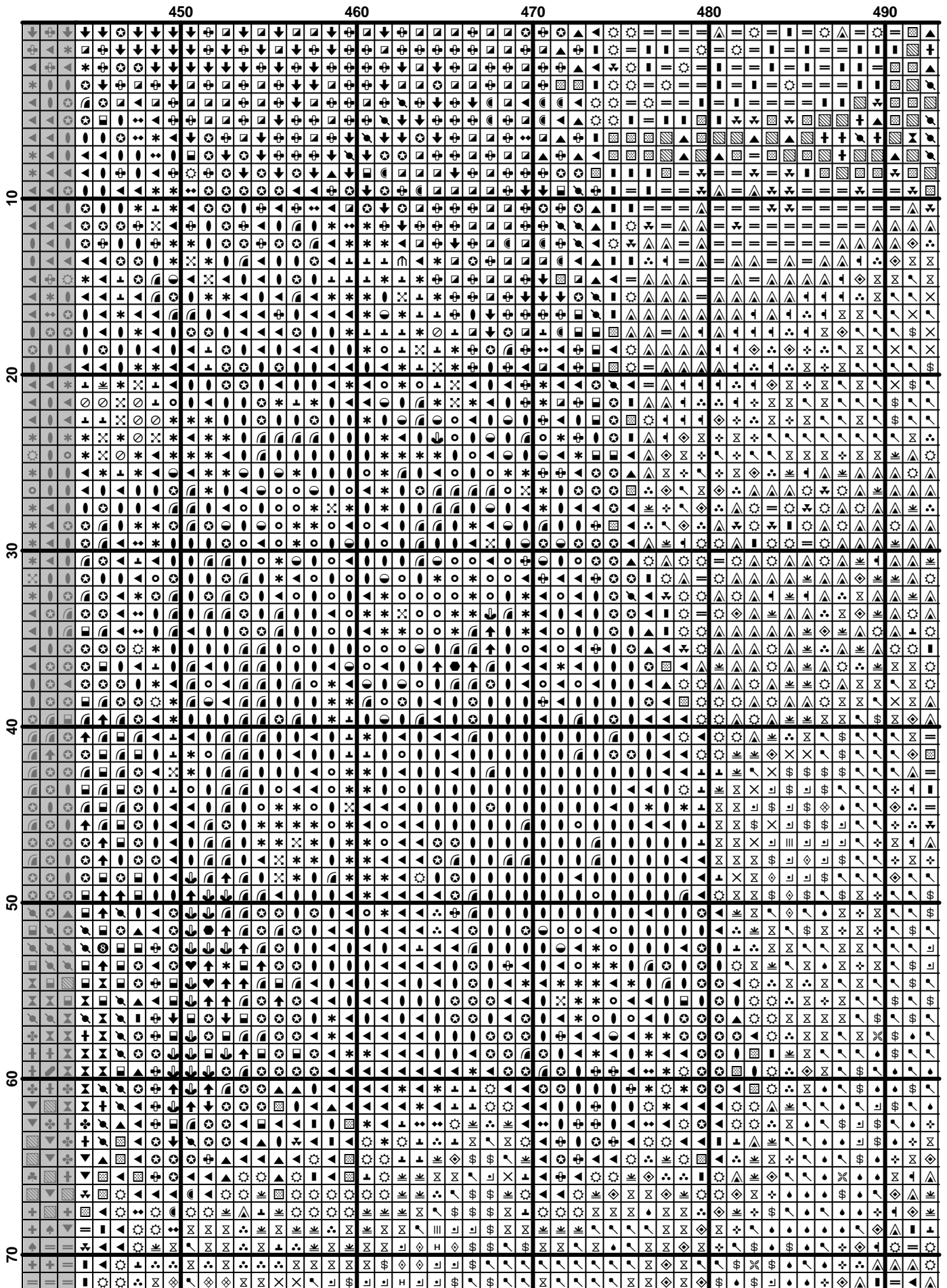


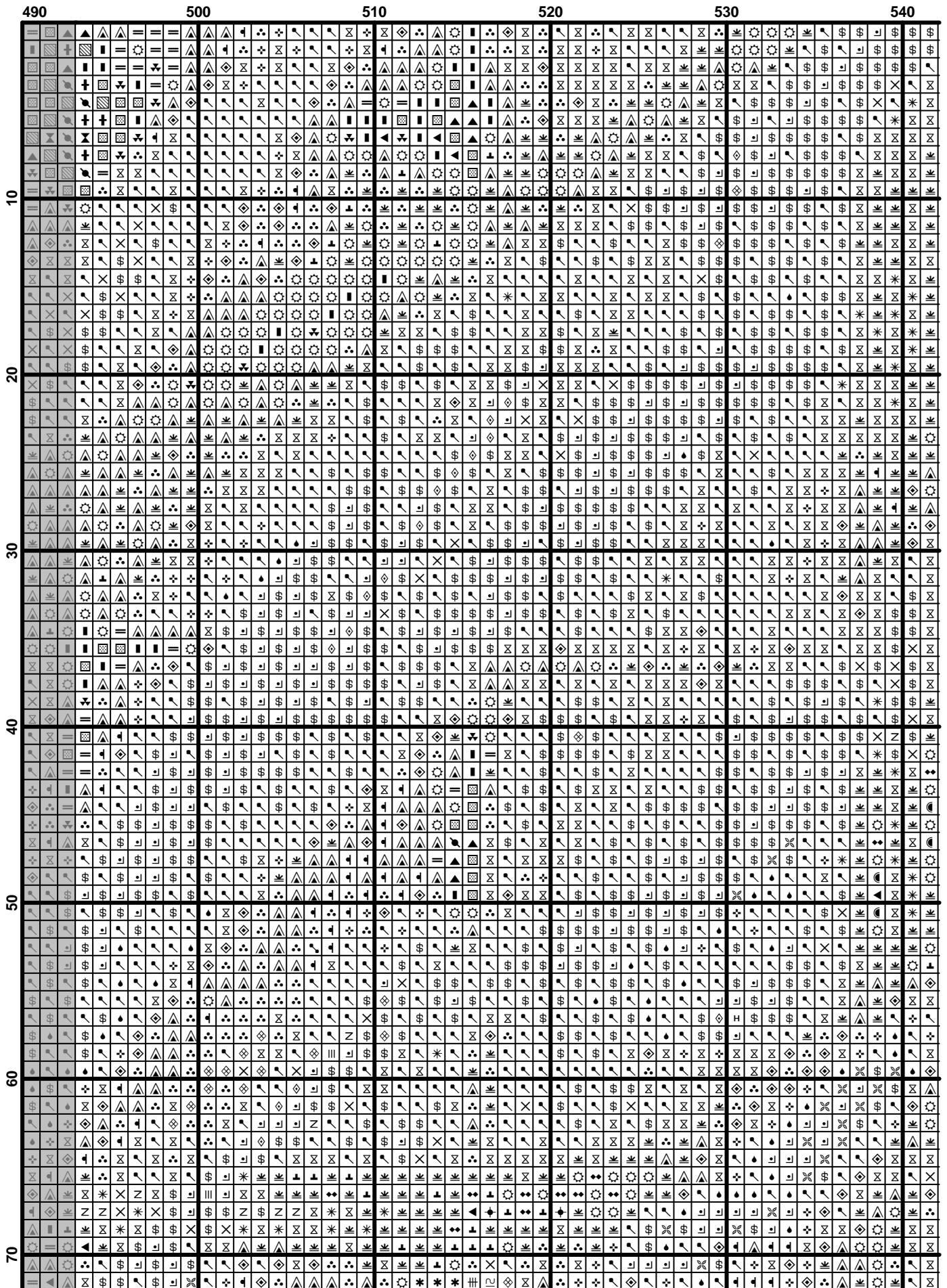


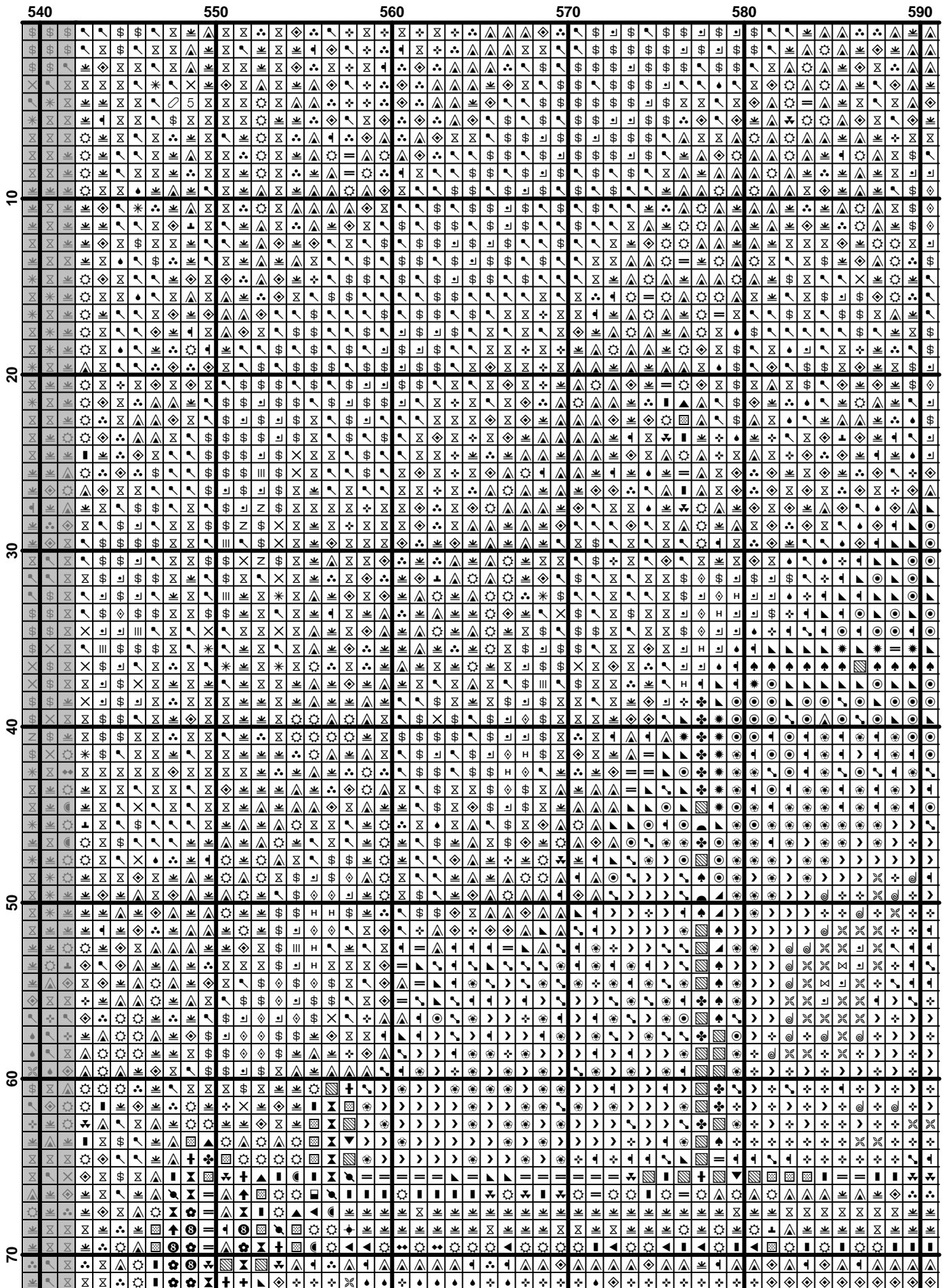
	300	310	320	330	340
10	↓	↓	↓	↓	↓
11	↓	↓	↓	↓	↓
12	↓	↓	↓	↓	↓
13	↓	↓	↓	↓	↓
14	↓	↓	↓	↓	↓
15	↓	↓	↓	↓	↓
16	↓	↓	↓	↓	↓
17	↓	↓	↓	↓	↓
18	↓	↓	↓	↓	↓
19	↓	↓	↓	↓	↓
20	↓	↓	↓	↓	↓
21	↓	↓	↓	↓	↓
22	↓	↓	↓	↓	↓
23	↓	↓	↓	↓	↓
24	↓	↓	↓	↓	↓
25	↓	↓	↓	↓	↓
26	↓	↓	↓	↓	↓
27	↓	↓	↓	↓	↓
28	↓	↓	↓	↓	↓
29	↓	↓	↓	↓	↓
30	↓	↓	↓	↓	↓
31	↓	↓	↓	↓	↓
32	↓	↓	↓	↓	↓
33	↓	↓	↓	↓	↓
34	↓	↓	↓	↓	↓
35	↓	↓	↓	↓	↓
36	↓	↓	↓	↓	↓
37	↓	↓	↓	↓	↓
38	↓	↓	↓	↓	↓
39	↓	↓	↓	↓	↓
40	↓	↓	↓	↓	↓
41	↓	↓	↓	↓	↓
42	↓	↓	↓	↓	↓
43	↓	↓	↓	↓	↓
44	↓	↓	↓	↓	↓
45	↓	↓	↓	↓	↓
46	↓	↓	↓	↓	↓
47	↓	↓	↓	↓	↓
48	↓	↓	↓	↓	↓
49	↓	↓	↓	↓	↓
50	↓	↓	↓	↓	↓
51	↓	↓	↓	↓	↓
52	↓	↓	↓	↓	↓
53	↓	↓	↓	↓	↓
54	↓	↓	↓	↓	↓
55	↓	↓	↓	↓	↓
56	↓	↓	↓	↓	↓
57	↓	↓	↓	↓	↓
58	↓	↓	↓	↓	↓
59	↓	↓	↓	↓	↓
60	↓	↓	↓	↓	↓
61	↓	↓	↓	↓	↓
62	↓	↓	↓	↓	↓
63	↓	↓	↓	↓	↓
64	↓	↓	↓	↓	↓
65	↓	↓	↓	↓	↓
66	↓	↓	↓	↓	↓
67	↓	↓	↓	↓	↓
68	↓	↓	↓	↓	↓
69	↓	↓	↓	↓	↓
70	↓	↓	↓	↓	↓

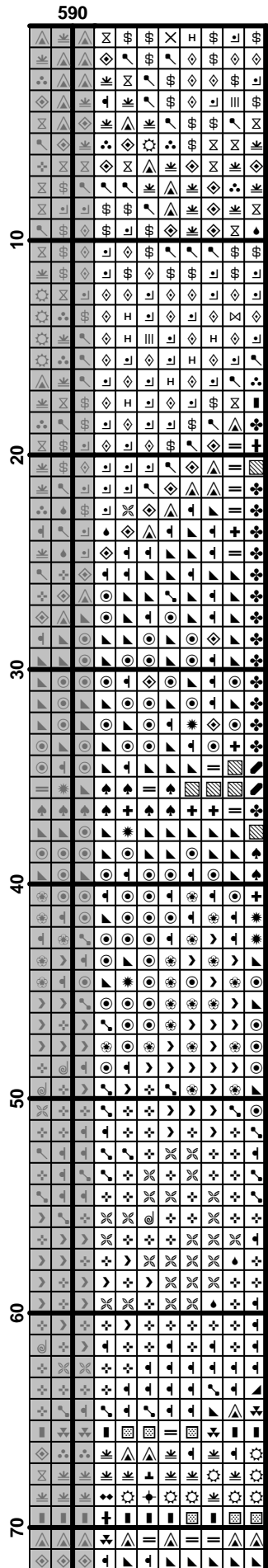
	350	360	370	380	390
10	↓	↓	↓	↓	↓
20	↓	↓	↓	↓	↓
30	↓	↓	↓	↓	↓
40	↓	↓	↓	↓	↓
50	↓	↓	↓	↓	↓
60	↓	↓	↓	↓	↓
70	↓	↓	↓	↓	↓

	400	410	420	430	440
10					
20					
30					
40					
50					
60					
70					

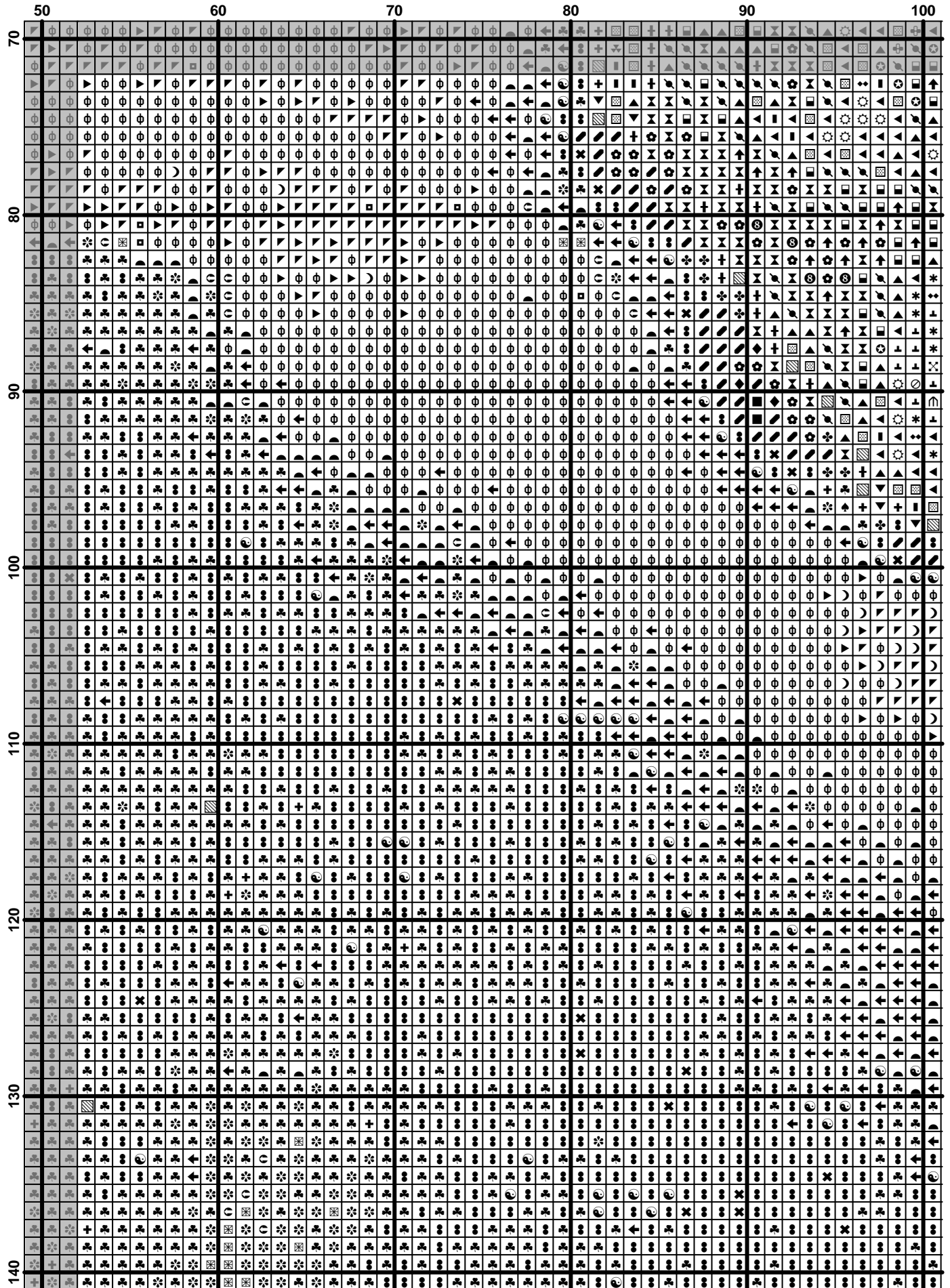








	10	20	30	40	50
70	+	+	+	+	+
80	+	+	+	+	+
90	+	+	+	+	+
100	+	+	+	+	+
110	+	+	+	+	+
120	+	+	+	+	+
130	+	+	+	+	+
140	+	+	+	+	+



	100	110	120	130	140	150
70						
80						
90						
100						
110						
120						
130						
140						

	150	160	170	180	190
70
80
90
100
110
120
130
140

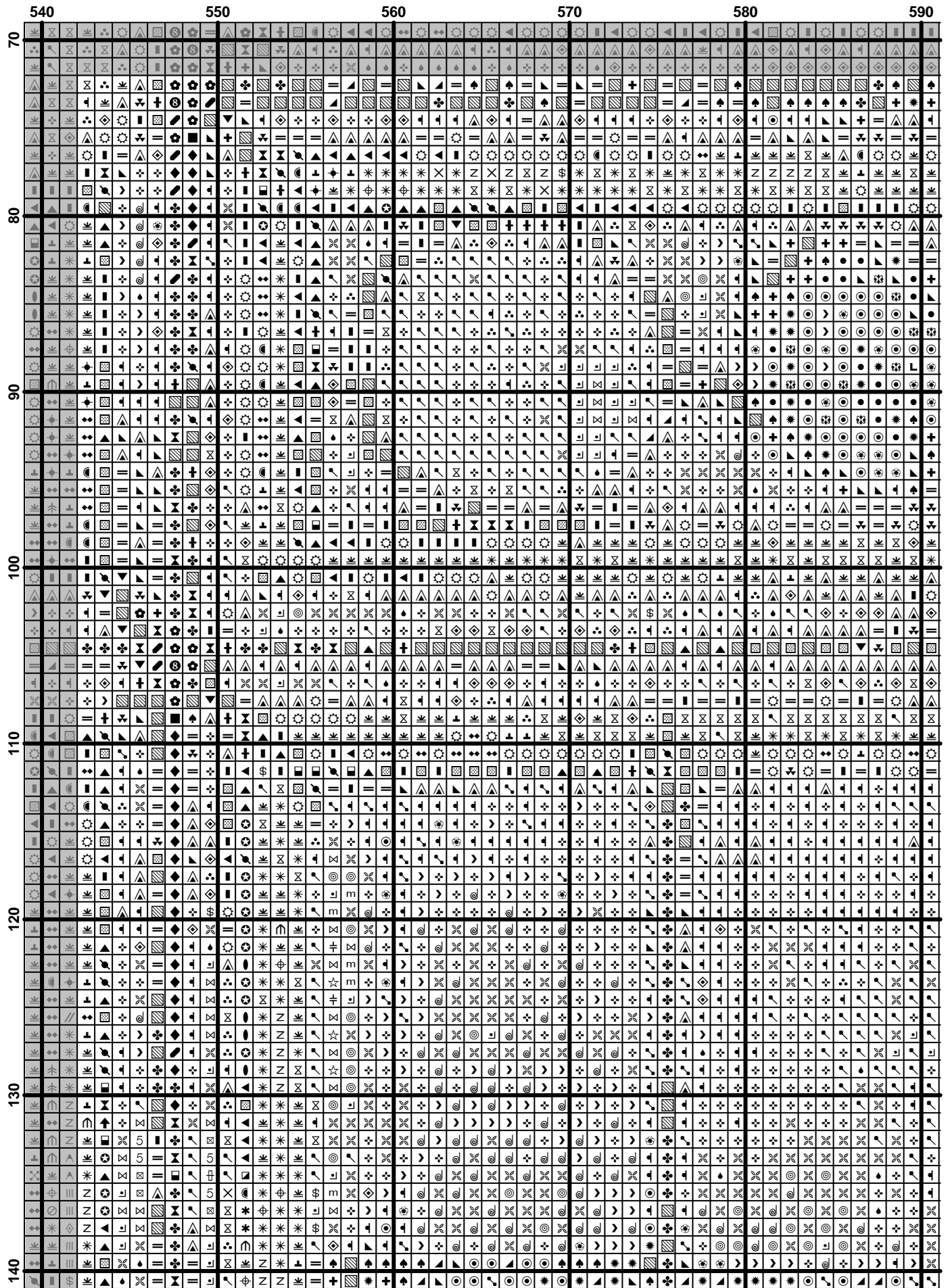
	250	260	270	280	290
70
80
90
100
110
120
130
140

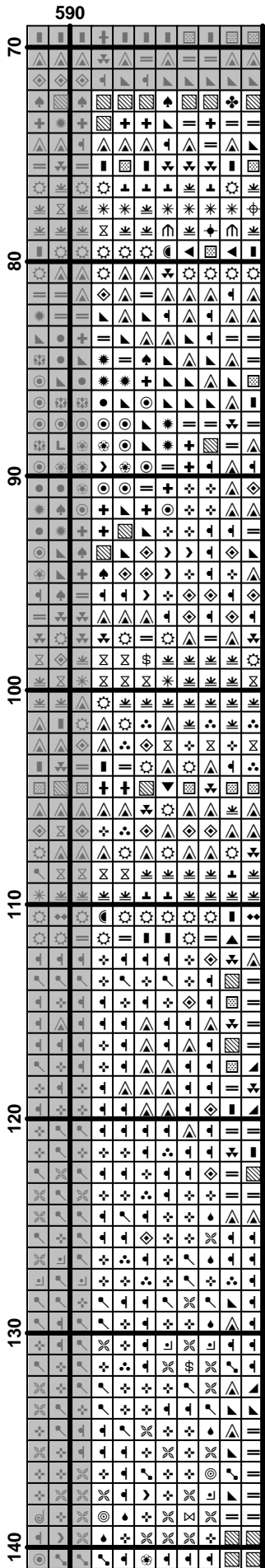
	300	310	320	330	340
70
80
90
100
110
120
130
140

	400	410	420	430	440
70
80
90
100
110
120
130
140

	450	460	470	480	490
70
80
90
100
110
120
130
140

	490	500	510	520	530	540
70	☀	☀	☀	☀	☀	☀
71	☀	☀	☀	☀	☀	☀
72	☀	☀	☀	☀	☀	☀
73	☀	☀	☀	☀	☀	☀
74	☀	☀	☀	☀	☀	☀
75	☀	☀	☀	☀	☀	☀
76	☀	☀	☀	☀	☀	☀
77	☀	☀	☀	☀	☀	☀
78	☀	☀	☀	☀	☀	☀
79	☀	☀	☀	☀	☀	☀
80	☀	☀	☀	☀	☀	☀
81	☀	☀	☀	☀	☀	☀
82	☀	☀	☀	☀	☀	☀
83	☀	☀	☀	☀	☀	☀
84	☀	☀	☀	☀	☀	☀
85	☀	☀	☀	☀	☀	☀
86	☀	☀	☀	☀	☀	☀
87	☀	☀	☀	☀	☀	☀
88	☀	☀	☀	☀	☀	☀
89	☀	☀	☀	☀	☀	☀
90	☀	☀	☀	☀	☀	☀
91	☀	☀	☀	☀	☀	☀
92	☀	☀	☀	☀	☀	☀
93	☀	☀	☀	☀	☀	☀
94	☀	☀	☀	☀	☀	☀
95	☀	☀	☀	☀	☀	☀
96	☀	☀	☀	☀	☀	☀
97	☀	☀	☀	☀	☀	☀
98	☀	☀	☀	☀	☀	☀
99	☀	☀	☀	☀	☀	☀
100	☀	☀	☀	☀	☀	☀
101	☀	☀	☀	☀	☀	☀
102	☀	☀	☀	☀	☀	☀
103	☀	☀	☀	☀	☀	☀
104	☀	☀	☀	☀	☀	☀
105	☀	☀	☀	☀	☀	☀
106	☀	☀	☀	☀	☀	☀
107	☀	☀	☀	☀	☀	☀
108	☀	☀	☀	☀	☀	☀
109	☀	☀	☀	☀	☀	☀
110	☀	☀	☀	☀	☀	☀
111	☀	☀	☀	☀	☀	☀
112	☀	☀	☀	☀	☀	☀
113	☀	☀	☀	☀	☀	☀
114	☀	☀	☀	☀	☀	☀
115	☀	☀	☀	☀	☀	☀
116	☀	☀	☀	☀	☀	☀
117	☀	☀	☀	☀	☀	☀
118	☀	☀	☀	☀	☀	☀
119	☀	☀	☀	☀	☀	☀
120	☀	☀	☀	☀	☀	☀
121	☀	☀	☀	☀	☀	☀
122	☀	☀	☀	☀	☀	☀
123	☀	☀	☀	☀	☀	☀
124	☀	☀	☀	☀	☀	☀
125	☀	☀	☀	☀	☀	☀
126	☀	☀	☀	☀	☀	☀
127	☀	☀	☀	☀	☀	☀
128	☀	☀	☀	☀	☀	☀
129	☀	☀	☀	☀	☀	☀
130	☀	☀	☀	☀	☀	☀
131	☀	☀	☀	☀	☀	☀
132	☀	☀	☀	☀	☀	☀
133	☀	☀	☀	☀	☀	☀
134	☀	☀	☀	☀	☀	☀
135	☀	☀	☀	☀	☀	☀
136	☀	☀	☀	☀	☀	☀
137	☀	☀	☀	☀	☀	☀
138	☀	☀	☀	☀	☀	☀
139	☀	☀	☀	☀	☀	☀
140	☀	☀	☀	☀	☀	☀





	10	20	30	40	50
140	+	+	+	+	+
141	+	+	+	+	+
142	+	+	+	+	+
143	+	+	+	+	+
144	+	+	+	+	+
145	+	+	+	+	+
146	+	+	+	+	+
147	+	+	+	+	+
148	+	+	+	+	+
149	+	+	+	+	+
150	+	+	+	+	+
151	+	+	+	+	+
152	+	+	+	+	+
153	+	+	+	+	+
154	+	+	+	+	+
155	+	+	+	+	+
156	+	+	+	+	+
157	+	+	+	+	+
158	+	+	+	+	+
159	+	+	+	+	+
160	+	+	+	+	+
161	+	+	+	+	+
162	+	+	+	+	+
163	+	+	+	+	+
164	+	+	+	+	+
165	+	+	+	+	+
166	+	+	+	+	+
167	+	+	+	+	+
168	+	+	+	+	+
169	+	+	+	+	+
170	+	+	+	+	+
171	+	+	+	+	+
172	+	+	+	+	+
173	+	+	+	+	+
174	+	+	+	+	+
175	+	+	+	+	+
176	+	+	+	+	+
177	+	+	+	+	+
178	+	+	+	+	+
179	+	+	+	+	+
180	+	+	+	+	+
181	+	+	+	+	+
182	+	+	+	+	+
183	+	+	+	+	+
184	+	+	+	+	+
185	+	+	+	+	+
186	+	+	+	+	+
187	+	+	+	+	+
188	+	+	+	+	+
189	+	+	+	+	+
190	+	+	+	+	+
191	+	+	+	+	+
192	+	+	+	+	+
193	+	+	+	+	+
194	+	+	+	+	+
195	+	+	+	+	+
196	+	+	+	+	+
197	+	+	+	+	+
198	+	+	+	+	+
199	+	+	+	+	+
200	+	+	+	+	+
201	+	+	+	+	+
202	+	+	+	+	+
203	+	+	+	+	+
204	+	+	+	+	+
205	+	+	+	+	+
206	+	+	+	+	+
207	+	+	+	+	+
208	+	+	+	+	+
209	+	+	+	+	+
210	+	+	+	+	+

	50	60	70	80	90	100
140
150
160
170
180
190
200
210

	100	110	120	130	140	150
140
150
160
170
180
190
200
210

	150	160	170	180	190
140	⌘	⌘	⌘	⌘	⌘
150	⌘	⌘	⌘	⌘	⌘
160	⌘	⌘	⌘	⌘	⌘
170	⌘	⌘	⌘	⌘	⌘
180	⌘	⌘	⌘	⌘	⌘
190	⌘	⌘	⌘	⌘	⌘
200	⌘	⌘	⌘	⌘	⌘
210	⌘	⌘	⌘	⌘	⌘

	200	210	220	230	240
140	⬆	⬆	⬆	⬆	⬆
141	⬆	⬆	⬆	⬆	⬆
142	⬆	⬆	⬆	⬆	⬆
143	⬆	⬆	⬆	⬆	⬆
144	⬆	⬆	⬆	⬆	⬆
145	⬆	⬆	⬆	⬆	⬆
146	⬆	⬆	⬆	⬆	⬆
147	⬆	⬆	⬆	⬆	⬆
148	⬆	⬆	⬆	⬆	⬆
149	⬆	⬆	⬆	⬆	⬆
150	⬆	⬆	⬆	⬆	⬆
151	⬆	⬆	⬆	⬆	⬆
152	⬆	⬆	⬆	⬆	⬆
153	⬆	⬆	⬆	⬆	⬆
154	⬆	⬆	⬆	⬆	⬆
155	⬆	⬆	⬆	⬆	⬆
156	⬆	⬆	⬆	⬆	⬆
157	⬆	⬆	⬆	⬆	⬆
158	⬆	⬆	⬆	⬆	⬆
159	⬆	⬆	⬆	⬆	⬆
160	⬆	⬆	⬆	⬆	⬆
161	⬆	⬆	⬆	⬆	⬆
162	⬆	⬆	⬆	⬆	⬆
163	⬆	⬆	⬆	⬆	⬆
164	⬆	⬆	⬆	⬆	⬆
165	⬆	⬆	⬆	⬆	⬆
166	⬆	⬆	⬆	⬆	⬆
167	⬆	⬆	⬆	⬆	⬆
168	⬆	⬆	⬆	⬆	⬆
169	⬆	⬆	⬆	⬆	⬆
170	⬆	⬆	⬆	⬆	⬆
171	⬆	⬆	⬆	⬆	⬆
172	⬆	⬆	⬆	⬆	⬆
173	⬆	⬆	⬆	⬆	⬆
174	⬆	⬆	⬆	⬆	⬆
175	⬆	⬆	⬆	⬆	⬆
176	⬆	⬆	⬆	⬆	⬆
177	⬆	⬆	⬆	⬆	⬆
178	⬆	⬆	⬆	⬆	⬆
179	⬆	⬆	⬆	⬆	⬆
180	⬆	⬆	⬆	⬆	⬆
181	⬆	⬆	⬆	⬆	⬆
182	⬆	⬆	⬆	⬆	⬆
183	⬆	⬆	⬆	⬆	⬆
184	⬆	⬆	⬆	⬆	⬆
185	⬆	⬆	⬆	⬆	⬆
186	⬆	⬆	⬆	⬆	⬆
187	⬆	⬆	⬆	⬆	⬆
188	⬆	⬆	⬆	⬆	⬆
189	⬆	⬆	⬆	⬆	⬆
190	⬆	⬆	⬆	⬆	⬆
191	⬆	⬆	⬆	⬆	⬆
192	⬆	⬆	⬆	⬆	⬆
193	⬆	⬆	⬆	⬆	⬆
194	⬆	⬆	⬆	⬆	⬆
195	⬆	⬆	⬆	⬆	⬆
196	⬆	⬆	⬆	⬆	⬆
197	⬆	⬆	⬆	⬆	⬆
198	⬆	⬆	⬆	⬆	⬆
199	⬆	⬆	⬆	⬆	⬆
200	⬆	⬆	⬆	⬆	⬆
201	⬆	⬆	⬆	⬆	⬆
202	⬆	⬆	⬆	⬆	⬆
203	⬆	⬆	⬆	⬆	⬆
204	⬆	⬆	⬆	⬆	⬆
205	⬆	⬆	⬆	⬆	⬆
206	⬆	⬆	⬆	⬆	⬆
207	⬆	⬆	⬆	⬆	⬆
208	⬆	⬆	⬆	⬆	⬆
209	⬆	⬆	⬆	⬆	⬆
210	⬆	⬆	⬆	⬆	⬆

	250	260	270	280	290
140	♣	♠	♠	♠	♠
141	♠	♠	♠	♠	♠
142	♠	♠	♠	♠	♠
143	♠	♠	♠	♠	♠
144	♠	♠	♠	♠	♠
145	♠	♠	♠	♠	♠
146	♠	♠	♠	♠	♠
147	♠	♠	♠	♠	♠
148	♠	♠	♠	♠	♠
149	♠	♠	♠	♠	♠
150	♠	♠	♠	♠	♠
151	♠	♠	♠	♠	♠
152	♠	♠	♠	♠	♠
153	♠	♠	♠	♠	♠
154	♠	♠	♠	♠	♠
155	♠	♠	♠	♠	♠
156	♠	♠	♠	♠	♠
157	♠	♠	♠	♠	♠
158	♠	♠	♠	♠	♠
159	♠	♠	♠	♠	♠
160	♠	♠	♠	♠	♠
161	♠	♠	♠	♠	♠
162	♠	♠	♠	♠	♠
163	♠	♠	♠	♠	♠
164	♠	♠	♠	♠	♠
165	♠	♠	♠	♠	♠
166	♠	♠	♠	♠	♠
167	♠	♠	♠	♠	♠
168	♠	♠	♠	♠	♠
169	♠	♠	♠	♠	♠
170	♠	♠	♠	♠	♠
171	♠	♠	♠	♠	♠
172	♠	♠	♠	♠	♠
173	♠	♠	♠	♠	♠
174	♠	♠	♠	♠	♠
175	♠	♠	♠	♠	♠
176	♠	♠	♠	♠	♠
177	♠	♠	♠	♠	♠
178	♠	♠	♠	♠	♠
179	♠	♠	♠	♠	♠
180	♠	♠	♠	♠	♠
181	♠	♠	♠	♠	♠
182	♠	♠	♠	♠	♠
183	♠	♠	♠	♠	♠
184	♠	♠	♠	♠	♠
185	♠	♠	♠	♠	♠
186	♠	♠	♠	♠	♠
187	♠	♠	♠	♠	♠
188	♠	♠	♠	♠	♠
189	♠	♠	♠	♠	♠
190	♠	♠	♠	♠	♠
191	♠	♠	♠	♠	♠
192	♠	♠	♠	♠	♠
193	♠	♠	♠	♠	♠
194	♠	♠	♠	♠	♠
195	♠	♠	♠	♠	♠
196	♠	♠	♠	♠	♠
197	♠	♠	♠	♠	♠
198	♠	♠	♠	♠	♠
199	♠	♠	♠	♠	♠
200	♠	♠	♠	♠	♠
201	♠	♠	♠	♠	♠
202	♠	♠	♠	♠	♠
203	♠	♠	♠	♠	♠
204	♠	♠	♠	♠	♠
205	♠	♠	♠	♠	♠
206	♠	♠	♠	♠	♠
207	♠	♠	♠	♠	♠
208	♠	♠	♠	♠	♠
209	♠	♠	♠	♠	♠
210	♠	♠	♠	♠	♠

	300	310	320	330	340
140	U	U	U	U	U
141	U	U	U	U	U
142	U	U	U	U	U
143	U	U	U	U	U
144	U	U	U	U	U
145	U	U	U	U	U
146	U	U	U	U	U
147	U	U	U	U	U
148	U	U	U	U	U
149	U	U	U	U	U
150	U	U	U	U	U
151	U	U	U	U	U
152	U	U	U	U	U
153	U	U	U	U	U
154	U	U	U	U	U
155	U	U	U	U	U
156	U	U	U	U	U
157	U	U	U	U	U
158	U	U	U	U	U
159	U	U	U	U	U
160	U	U	U	U	U
161	U	U	U	U	U
162	U	U	U	U	U
163	U	U	U	U	U
164	U	U	U	U	U
165	U	U	U	U	U
166	U	U	U	U	U
167	U	U	U	U	U
168	U	U	U	U	U
169	U	U	U	U	U
170	U	U	U	U	U
171	U	U	U	U	U
172	U	U	U	U	U
173	U	U	U	U	U
174	U	U	U	U	U
175	U	U	U	U	U
176	U	U	U	U	U
177	U	U	U	U	U
178	U	U	U	U	U
179	U	U	U	U	U
180	U	U	U	U	U
181	U	U	U	U	U
182	U	U	U	U	U
183	U	U	U	U	U
184	U	U	U	U	U
185	U	U	U	U	U
186	U	U	U	U	U
187	U	U	U	U	U
188	U	U	U	U	U
189	U	U	U	U	U
190	U	U	U	U	U
191	U	U	U	U	U
192	U	U	U	U	U
193	U	U	U	U	U
194	U	U	U	U	U
195	U	U	U	U	U
196	U	U	U	U	U
197	U	U	U	U	U
198	U	U	U	U	U
199	U	U	U	U	U
200	U	U	U	U	U
201	U	U	U	U	U
202	U	U	U	U	U
203	U	U	U	U	U
204	U	U	U	U	U
205	U	U	U	U	U
206	U	U	U	U	U
207	U	U	U	U	U
208	U	U	U	U	U
209	U	U	U	U	U
210	U	U	U	U	U

	350	360	370	380	390
140
150
160
170
180
190
200
210

	400	410	420	430	440
140
150
160
170
180
190
200
210

	540	550	560	570	580	590
140	⬆️	⬆️	⬆️	⬆️	⬆️	⬆️
150	⬆️	⬆️	⬆️	⬆️	⬆️	⬆️
160	⬆️	⬆️	⬆️	⬆️	⬆️	⬆️
170	⬆️	⬆️	⬆️	⬆️	⬆️	⬆️
180	⬆️	⬆️	⬆️	⬆️	⬆️	⬆️
190	⬆️	⬆️	⬆️	⬆️	⬆️	⬆️
200	⬆️	⬆️	⬆️	⬆️	⬆️	⬆️
210	⬆️	⬆️	⬆️	⬆️	⬆️	⬆️

	10	20	30	40	50
210
220
230
240
250
260
270

	100	110	120	130	140	150
210						
220						
230						
240						
250						
260						
270						

	200	210	220	230	240
210	☄	☄	☄	☄	☄
220	☄	☄	☄	☄	☄
230	☄	☄	☄	☄	☄
240	☄	☄	☄	☄	☄
250	☄	☄	☄	☄	☄
260	☄	☄	☄	☄	☄
270	☄	☄	☄	☄	☄

	250	260	270	280	290
210	U	U	U	U	U
211	U	U	U	U	U
212	U	U	U	U	U
213	U	U	U	U	U
214	U	U	U	U	U
215	U	U	U	U	U
216	U	U	U	U	U
217	U	U	U	U	U
218	U	U	U	U	U
219	U	U	U	U	U
220	U	U	U	U	U
221	U	U	U	U	U
222	U	U	U	U	U
223	U	U	U	U	U
224	U	U	U	U	U
225	U	U	U	U	U
226	U	U	U	U	U
227	U	U	U	U	U
228	U	U	U	U	U
229	U	U	U	U	U
230	U	U	U	U	U
231	U	U	U	U	U
232	U	U	U	U	U
233	U	U	U	U	U
234	U	U	U	U	U
235	U	U	U	U	U
236	U	U	U	U	U
237	U	U	U	U	U
238	U	U	U	U	U
239	U	U	U	U	U
240	U	U	U	U	U
241	U	U	U	U	U
242	U	U	U	U	U
243	U	U	U	U	U
244	U	U	U	U	U
245	U	U	U	U	U
246	U	U	U	U	U
247	U	U	U	U	U
248	U	U	U	U	U
249	U	U	U	U	U
250	U	U	U	U	U
251	U	U	U	U	U
252	U	U	U	U	U
253	U	U	U	U	U
254	U	U	U	U	U
255	U	U	U	U	U
256	U	U	U	U	U
257	U	U	U	U	U
258	U	U	U	U	U
259	U	U	U	U	U
260	U	U	U	U	U
261	U	U	U	U	U
262	U	U	U	U	U
263	U	U	U	U	U
264	U	U	U	U	U
265	U	U	U	U	U
266	U	U	U	U	U
267	U	U	U	U	U
268	U	U	U	U	U
269	U	U	U	U	U
270	U	U	U	U	U
271	U	U	U	U	U
272	U	U	U	U	U
273	U	U	U	U	U
274	U	U	U	U	U
275	U	U	U	U	U
276	U	U	U	U	U
277	U	U	U	U	U
278	U	U	U	U	U
279	U	U	U	U	U
280	U	U	U	U	U
281	U	U	U	U	U
282	U	U	U	U	U
283	U	U	U	U	U
284	U	U	U	U	U
285	U	U	U	U	U
286	U	U	U	U	U
287	U	U	U	U	U
288	U	U	U	U	U
289	U	U	U	U	U
290	U	U	U	U	U

	400	410	420	430	440
210
220
230
240
250
260
270

	450	460	470	480	490
210	▽	▽	▽	▽	▽
220	▽	▽	▽	▽	▽
230	▽	▽	▽	▽	▽
240	▽	▽	▽	▽	▽
250	▽	▽	▽	▽	▽
260	▽	▽	▽	▽	▽
270	▽	▽	▽	▽	▽

	490	500	510	520	530	540
210	L	L	L	L	L	L
220	L	L	L	L	L	L
230	L	L	L	L	L	L
240	L	L	L	L	L	L
250	L	L	L	L	L	L
260	L	L	L	L	L	L
270	L	L	L	L	L	L

	540	550	560	570	580	590
210
220
230
240
250
260
270

590										
	↑	↑	0	0	≡	X	/	V	△	U
	↑	△	↑	0	≡	X	0	C	↑	△
210	↑	≡	0	↑	V	≡	0	2	L	U
	↑	/	H	V	↑	L	↑	2	#	↑
	V	V	/	V	0	H	X	≡	2	△
	↑	↑	↑	V	↑	V	X	X	2	△
	2	#	H	0	↑	V	X	X	2	△
	≡	X	≡	H	V	0	2	≡	2	△
	≡	X	≡	2	V	0	2	H	2	0
	X	X	≡	5	0	0	0	0	2	H
	↑	≡	#	0	H	2	↑	5	H	2
220	0	≡	H	H	5	↑	0	#	2	0
	0	#	0	+	+	H	V	0	△	5
	△	≡	X	0	V	H	2	△	↑	V
	+	≡	△	V	+	/	V	↑	↑	↑
	0	≡	0	V	0	V	△	↑	V	V
	0	#	2	V	0	0	V	△	↑	△
	0	≡	V	+	V	V	↑	↑	↑	△
	↑	△	0	V	↑	△	△	↑	↑	↑
	+	X	0	V	↑	△	△	↑	↑	↑
	0	H	△	2	↑	0	V	V	0	0
230	0	#	2	↑	V	↑	/	V	V	↑
	0	↑	△	0	V	0	H	2	△	↑
	↑	△	↑	0	0	0	0	↑	↑	↑
	△	△	↑	V	0	0	V	↑	2	↑
	△	△	↑	V	0	0	V	↑	△	↑
	↑	V	V	↑	V	↑	△	△	↑	↑
	V	V	V	↑	↑	↑	△	↑	↑	↑
	V	0	0	H	△	↑	↑	↑	1	△
	0	H	△	H	△	↑	△	↑	2	△
240	0	△	V	2	0	△	△	↑	↑	△
	H	△	V	+	0	△	△	↑	↑	△
	△	H	V	0	V	△	↑	V	X	X
	H	V	0	0	0	△	△	↑	X	X
	V	0	2	V	△	△	△	↑	2	X
	V	0	V	△	V	↑	△	△	↑	△
	0	△	↑	2	/	V	↑	△	↑	△
	V	/	V	0	2	V	V	↑	△	↑
	0	2	V	0	0	0	0	↑	↑	↑
	H	△	0	↑	V	0	0	↑	↑	↑
250	△	△	2	2	0	0	0	↑	V	V
	#	△	H	2	△	△	V	V	V	V
	#	△	H	2	△	△	△	H	H	V
	#	≡	△	2	△	△	△	0	V	0
	#	≡	△	2	H	△	2	H	2	+
	#	≡	△	2	△	△	△	0	0	0
	△	△	△	2	H	H	H	5	0	+
	H	△	H	2	0	0	0	0	0	H
	0	H	H	H	2	0	0	2	2	△
260	2	0	/	0	0	0	0	0	0	△
	H	↑	5	H	5	H	0	H	0	≡
	2	5	△	5	H	0	0	H	↑	#
	0	H	+	H	0	0	0	△	△	△
	△	0	△	0	H	0	0	H	↑	2
	H	H	+	0	0	0	2	H	△	H
	2	V	V	0	H	0	0	H	H	H
	0	V	V	↑	H	0	0	H	2	0
	+	↑	V	V	0	0	2	2	0	H
	0	0	V	0	0	0	2	2	H	H
270	0	2	0	↑	0	0	2	2	2	H
	0	/	△	↑	V	4	2	2	2	0
	V	2	△	V	△	/	2	2	H	2
	0	△	△	V	L	V	2	2	H	2
	0	V	7	L	/	V	△	2	2	△
	0	↑	V	4	V	2	△	2	0	△
	0	V	L	V	V	H	H	H	2	△
	0	0	#	H	H	2	2	2	H	2
	↑	H	/	2	H	H	0	0	0	0

	10	20	30	40	50
280
290
300
310
320
330
340

	50	60	70	80	90	100
280	2	2	2	2	2	2
281	2	2	2	2	2	2
282	2	2	2	2	2	2
283	2	2	2	2	2	2
284	2	2	2	2	2	2
285	2	2	2	2	2	2
286	2	2	2	2	2	2
287	2	2	2	2	2	2
288	2	2	2	2	2	2
289	2	2	2	2	2	2
290	2	2	2	2	2	2
291	2	2	2	2	2	2
292	2	2	2	2	2	2
293	2	2	2	2	2	2
294	2	2	2	2	2	2
295	2	2	2	2	2	2
296	2	2	2	2	2	2
297	2	2	2	2	2	2
298	2	2	2	2	2	2
299	2	2	2	2	2	2
300	2	2	2	2	2	2
301	2	2	2	2	2	2
302	2	2	2	2	2	2
303	2	2	2	2	2	2
304	2	2	2	2	2	2
305	2	2	2	2	2	2
306	2	2	2	2	2	2
307	2	2	2	2	2	2
308	2	2	2	2	2	2
309	2	2	2	2	2	2
310	2	2	2	2	2	2
311	2	2	2	2	2	2
312	2	2	2	2	2	2
313	2	2	2	2	2	2
314	2	2	2	2	2	2
315	2	2	2	2	2	2
316	2	2	2	2	2	2
317	2	2	2	2	2	2
318	2	2	2	2	2	2
319	2	2	2	2	2	2
320	2	2	2	2	2	2
321	2	2	2	2	2	2
322	2	2	2	2	2	2
323	2	2	2	2	2	2
324	2	2	2	2	2	2
325	2	2	2	2	2	2
326	2	2	2	2	2	2
327	2	2	2	2	2	2
328	2	2	2	2	2	2
329	2	2	2	2	2	2
330	2	2	2	2	2	2
331	2	2	2	2	2	2
332	2	2	2	2	2	2
333	2	2	2	2	2	2
334	2	2	2	2	2	2
335	2	2	2	2	2	2
336	2	2	2	2	2	2
337	2	2	2	2	2	2
338	2	2	2	2	2	2
339	2	2	2	2	2	2
340	2	2	2	2	2	2
341	2	2	2	2	2	2
342	2	2	2	2	2	2
343	2	2	2	2	2	2
344	2	2	2	2	2	2
345	2	2	2	2	2	2
346	2	2	2	2	2	2
347	2	2	2	2	2	2
348	2	2	2	2	2	2
349	2	2	2	2	2	2
350	2	2	2	2	2	2

	100	110	120	130	140	150
280
290
300
310
320
330
340

	150	160	170	180	190
280	⬆️	⬆️	⬆️	⬆️	⬆️
290	⬆️	⬆️	⬆️	⬆️	⬆️
300	⬆️	⬆️	⬆️	⬆️	⬆️
310	⬆️	⬆️	⬆️	⬆️	⬆️
320	⬆️	⬆️	⬆️	⬆️	⬆️
330	⬆️	⬆️	⬆️	⬆️	⬆️
340	⬆️	⬆️	⬆️	⬆️	⬆️

	250	260	270	280	290
280
290
300
310
320
330
340

	300	310	320	330	340
280	0	0	0	0	0
281	0	0	0	0	0
282	0	0	0	0	0
283	0	0	0	0	0
284	0	0	0	0	0
285	0	0	0	0	0
286	0	0	0	0	0
287	0	0	0	0	0
288	0	0	0	0	0
289	0	0	0	0	0
290	0	0	0	0	0
291	0	0	0	0	0
292	0	0	0	0	0
293	0	0	0	0	0
294	0	0	0	0	0
295	0	0	0	0	0
296	0	0	0	0	0
297	0	0	0	0	0
298	0	0	0	0	0
299	0	0	0	0	0
300	0	0	0	0	0
301	0	0	0	0	0
302	0	0	0	0	0
303	0	0	0	0	0
304	0	0	0	0	0
305	0	0	0	0	0
306	0	0	0	0	0
307	0	0	0	0	0
308	0	0	0	0	0
309	0	0	0	0	0
310	0	0	0	0	0
311	0	0	0	0	0
312	0	0	0	0	0
313	0	0	0	0	0
314	0	0	0	0	0
315	0	0	0	0	0
316	0	0	0	0	0
317	0	0	0	0	0
318	0	0	0	0	0
319	0	0	0	0	0
320	0	0	0	0	0
321	0	0	0	0	0
322	0	0	0	0	0
323	0	0	0	0	0
324	0	0	0	0	0
325	0	0	0	0	0
326	0	0	0	0	0
327	0	0	0	0	0
328	0	0	0	0	0
329	0	0	0	0	0
330	0	0	0	0	0
331	0	0	0	0	0
332	0	0	0	0	0
333	0	0	0	0	0
334	0	0	0	0	0
335	0	0	0	0	0
336	0	0	0	0	0
337	0	0	0	0	0
338	0	0	0	0	0
339	0	0	0	0	0
340	0	0	0	0	0

	490	500	510	520	530	540
280	◇	◇	◇	◇	◇	◇
281	◇	◇	◇	◇	◇	◇
282	◇	◇	◇	◇	◇	◇
283	◇	◇	◇	◇	◇	◇
284	◇	◇	◇	◇	◇	◇
285	◇	◇	◇	◇	◇	◇
286	◇	◇	◇	◇	◇	◇
287	◇	◇	◇	◇	◇	◇
288	◇	◇	◇	◇	◇	◇
289	◇	◇	◇	◇	◇	◇
290	◇	◇	◇	◇	◇	◇
291	◇	◇	◇	◇	◇	◇
292	◇	◇	◇	◇	◇	◇
293	◇	◇	◇	◇	◇	◇
294	◇	◇	◇	◇	◇	◇
295	◇	◇	◇	◇	◇	◇
296	◇	◇	◇	◇	◇	◇
297	◇	◇	◇	◇	◇	◇
298	◇	◇	◇	◇	◇	◇
299	◇	◇	◇	◇	◇	◇
300	◇	◇	◇	◇	◇	◇
301	◇	◇	◇	◇	◇	◇
302	◇	◇	◇	◇	◇	◇
303	◇	◇	◇	◇	◇	◇
304	◇	◇	◇	◇	◇	◇
305	◇	◇	◇	◇	◇	◇
306	◇	◇	◇	◇	◇	◇
307	◇	◇	◇	◇	◇	◇
308	◇	◇	◇	◇	◇	◇
309	◇	◇	◇	◇	◇	◇
310	◇	◇	◇	◇	◇	◇
311	◇	◇	◇	◇	◇	◇
312	◇	◇	◇	◇	◇	◇
313	◇	◇	◇	◇	◇	◇
314	◇	◇	◇	◇	◇	◇
315	◇	◇	◇	◇	◇	◇
316	◇	◇	◇	◇	◇	◇
317	◇	◇	◇	◇	◇	◇
318	◇	◇	◇	◇	◇	◇
319	◇	◇	◇	◇	◇	◇
320	◇	◇	◇	◇	◇	◇
321	◇	◇	◇	◇	◇	◇
322	◇	◇	◇	◇	◇	◇
323	◇	◇	◇	◇	◇	◇
324	◇	◇	◇	◇	◇	◇
325	◇	◇	◇	◇	◇	◇
326	◇	◇	◇	◇	◇	◇
327	◇	◇	◇	◇	◇	◇
328	◇	◇	◇	◇	◇	◇
329	◇	◇	◇	◇	◇	◇
330	◇	◇	◇	◇	◇	◇
331	◇	◇	◇	◇	◇	◇
332	◇	◇	◇	◇	◇	◇
333	◇	◇	◇	◇	◇	◇
334	◇	◇	◇	◇	◇	◇
335	◇	◇	◇	◇	◇	◇
336	◇	◇	◇	◇	◇	◇
337	◇	◇	◇	◇	◇	◇
338	◇	◇	◇	◇	◇	◇
339	◇	◇	◇	◇	◇	◇
340	◇	◇	◇	◇	◇	◇
341	◇	◇	◇	◇	◇	◇
342	◇	◇	◇	◇	◇	◇
343	◇	◇	◇	◇	◇	◇
344	◇	◇	◇	◇	◇	◇
345	◇	◇	◇	◇	◇	◇
346	◇	◇	◇	◇	◇	◇
347	◇	◇	◇	◇	◇	◇
348	◇	◇	◇	◇	◇	◇
349	◇	◇	◇	◇	◇	◇
350	◇	◇	◇	◇	◇	◇

	540	550	560	570	580	590
280
290
300
310
320
330
340

	10	20	30	40	50
350
360
370
380
390
400
410

	50	60	70	80	90	100
350
360
370
380
390
400
410

	100	110	120	130	140	150
350
360
370
380
390
400
410

	150	160	170	180	190
350
360
370
380
390
400
410

	200	210	220	230	240
350	△	△	△	△	△
360	△	△	△	△	△
370	△	△	△	△	△
380	△	△	△	△	△
390	△	△	△	△	△
400	△	△	△	△	△
410	△	△	△	△	△

	250	260	270	280	290
350
360
370
380
390
400
410

	300	310	320	330	340
350
360
370
380
390
400
410

		350		360		370		380		390	
350											
360											
370											
380											
390											
400											
410											

	400	410	420	430	440
350	↑	↑	↑	↑	↑
360	↑	↑	↑	↑	↑
370	↑	↑	↑	↑	↑
380	↑	↑	↑	↑	↑
390	↑	↑	↑	↑	↑
400	↑	↑	↑	↑	↑
410	↑	↑	↑	↑	↑

	450	460	470	480	490
350	+	+	+	+	+
360	+	+	+	+	+
370	+	+	+	+	+
380	+	+	+	+	+
390	+	+	+	+	+
400	+	+	+	+	+
410	+	+	+	+	+

	490	500	510	520	530	540
350
360
370
380
390
400
410

	540	550	560	570	580	590
350	⬠	⬠	⬠	⬠	⬠	⬠
360	⬠	⬠	⬠	⬠	⬠	⬠
370	⬠	⬠	⬠	⬠	⬠	⬠
380	⬠	⬠	⬠	⬠	⬠	⬠
390	⬠	⬠	⬠	⬠	⬠	⬠
400	⬠	⬠	⬠	⬠	⬠	⬠
410	⬠	⬠	⬠	⬠	⬠	⬠

590

350

360

370

380

390

400

410

The grid consists of 100 rows and 20 columns of symbols. The symbols are arranged in a repeating pattern that changes every 10 rows. The symbols include various geometric shapes such as diamonds, squares, triangles, and circles, as well as abstract patterns like stars and lines. The grid is divided into sections by horizontal lines, with labels 590, 350, 360, 370, 380, 390, 400, and 410 on the left side.

