



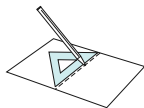
\*Use a 4 x 6 size (102 mm x 152 mm) photo for the frame inside.

**Instructions** Pattern: 6 sheets Assembly Instructions: 1 sheet Number of parts: 16



**You will need**

Scissors, glue, ruler, a used ball-point pen



**Assembly Tip**

Trace along the folds with a ruler and a used pen (no ink) to get a sharper, easier fold.



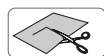
**Mountain fold**  
(dotted line)

Make a mountain fold



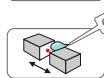
**Valley fold**  
(dashed and dotted line)

Make a valley fold



**Scissors line**  
(solid line)

Cut out



**Cut in Line**  
(solid line)

Cut in

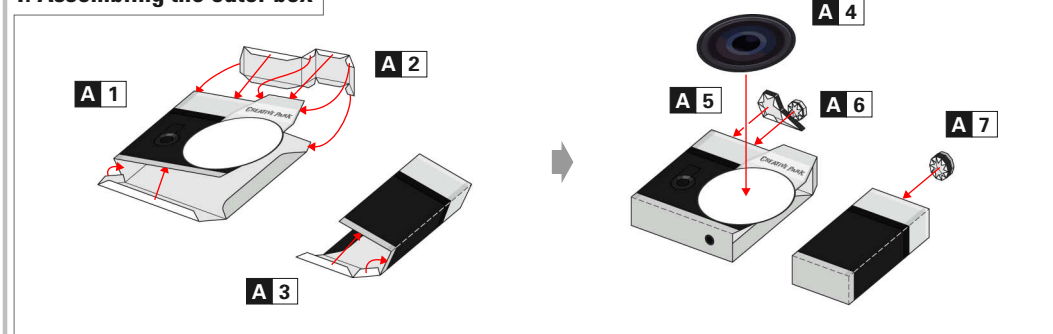
**Glue tab**

Attach

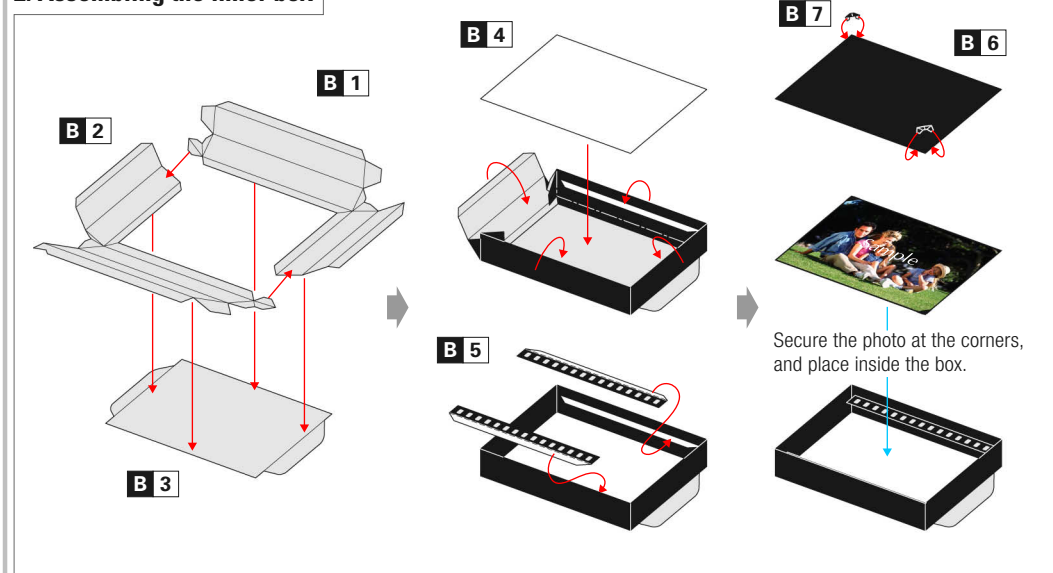


**[Caution]** Glue, scissors and other tools may be dangerous to young children, so be sure to keep them out of the reach of young children.

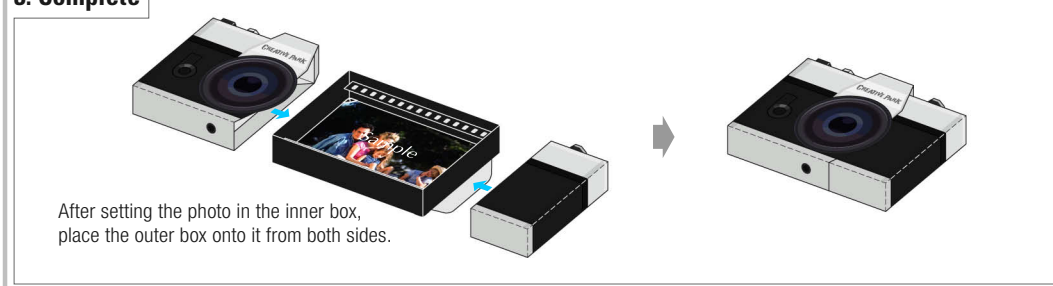
**1. Assembling the outer box**



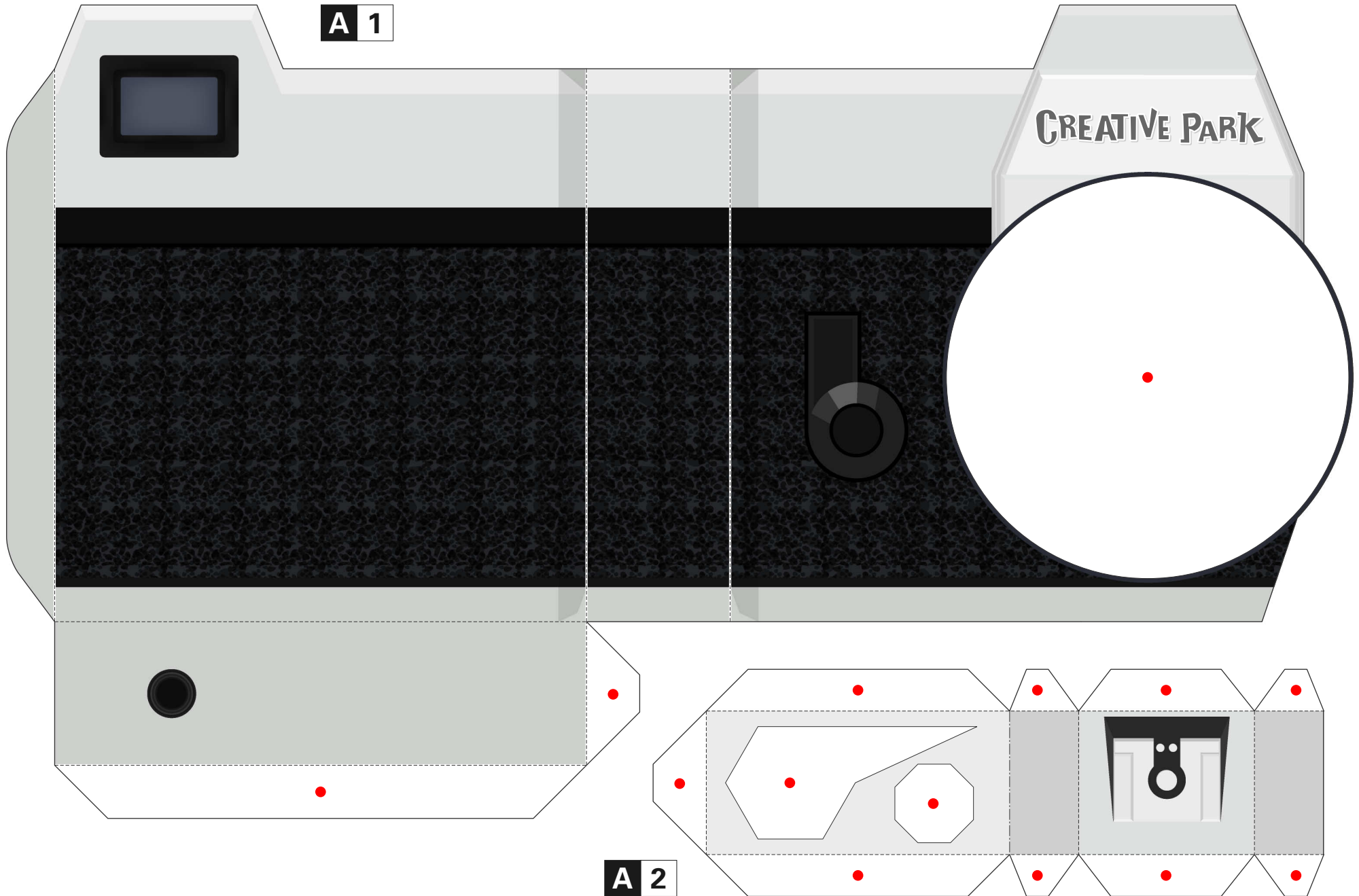
**2. Assembling the inner box**

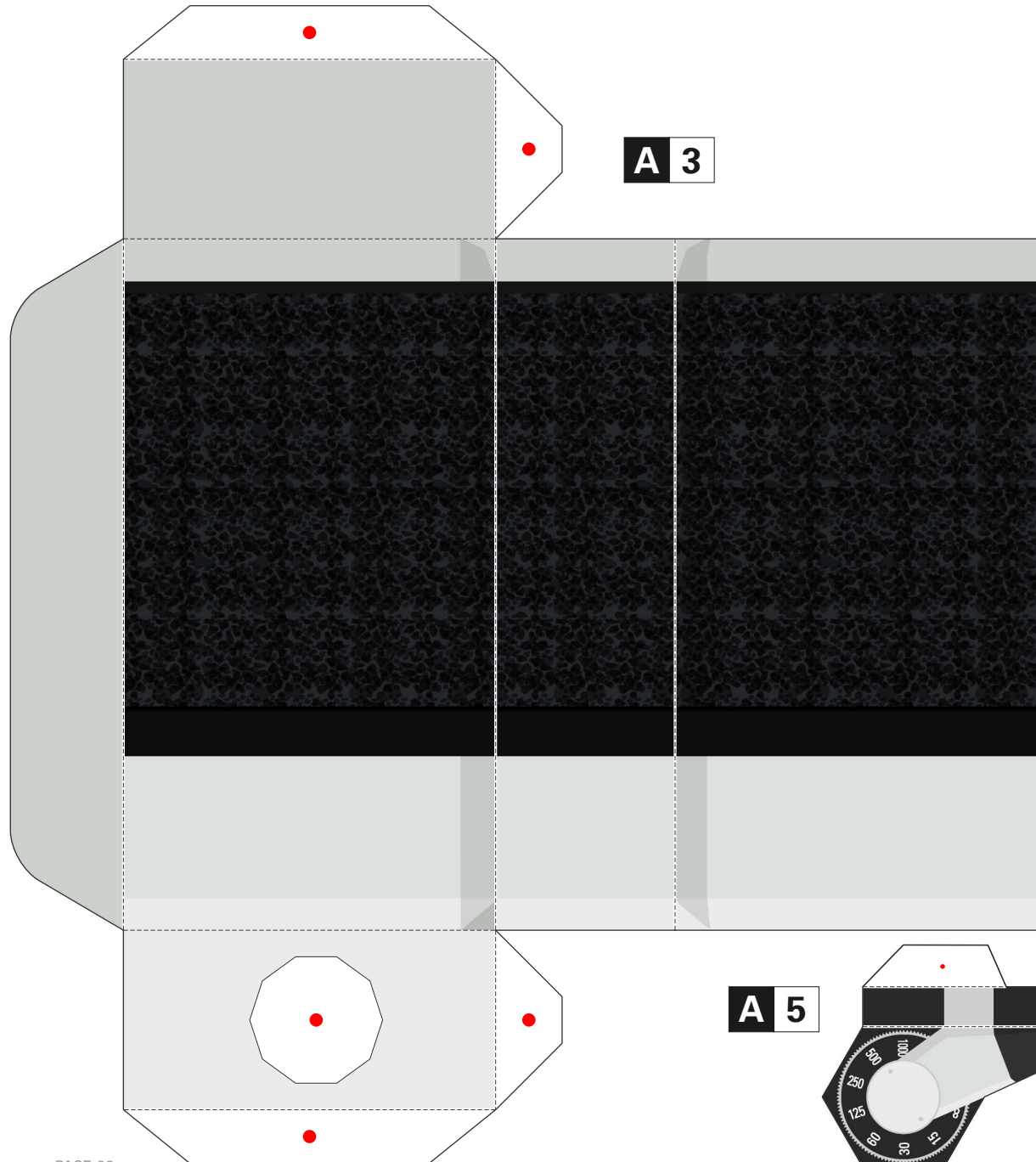


**3. Complete**

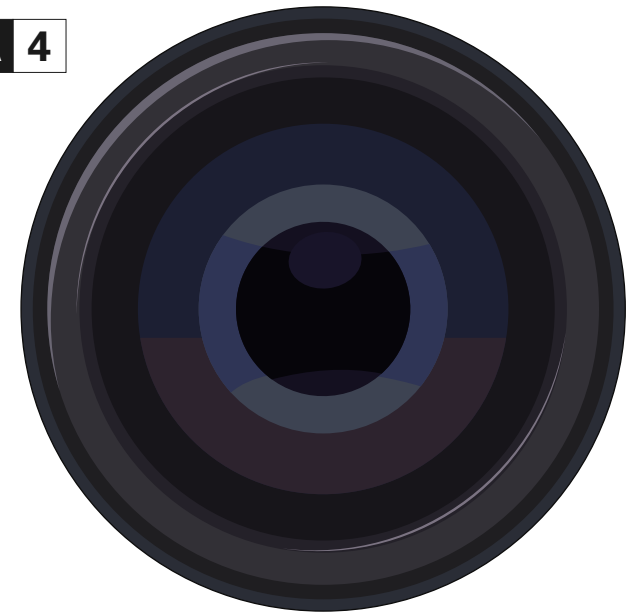


After setting the photo in the inner box, place the outer box onto it from both sides.

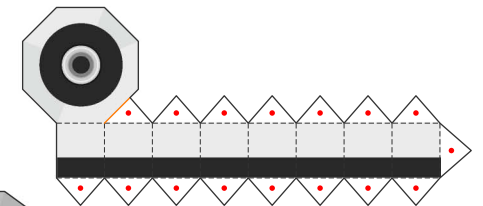




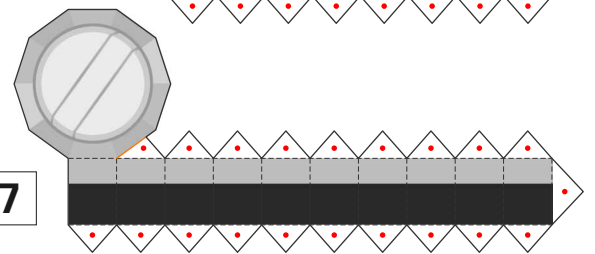
**A 4**



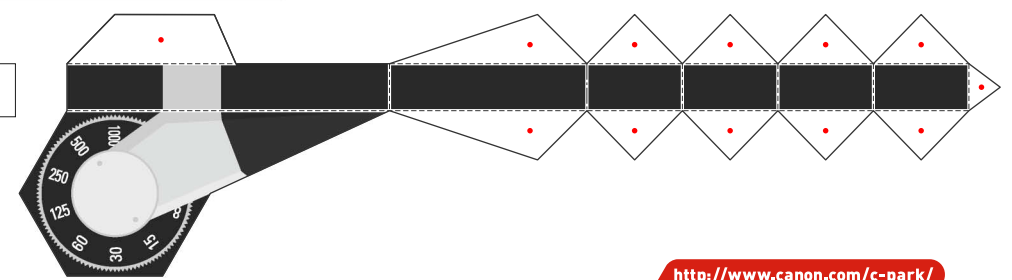
**A 6**



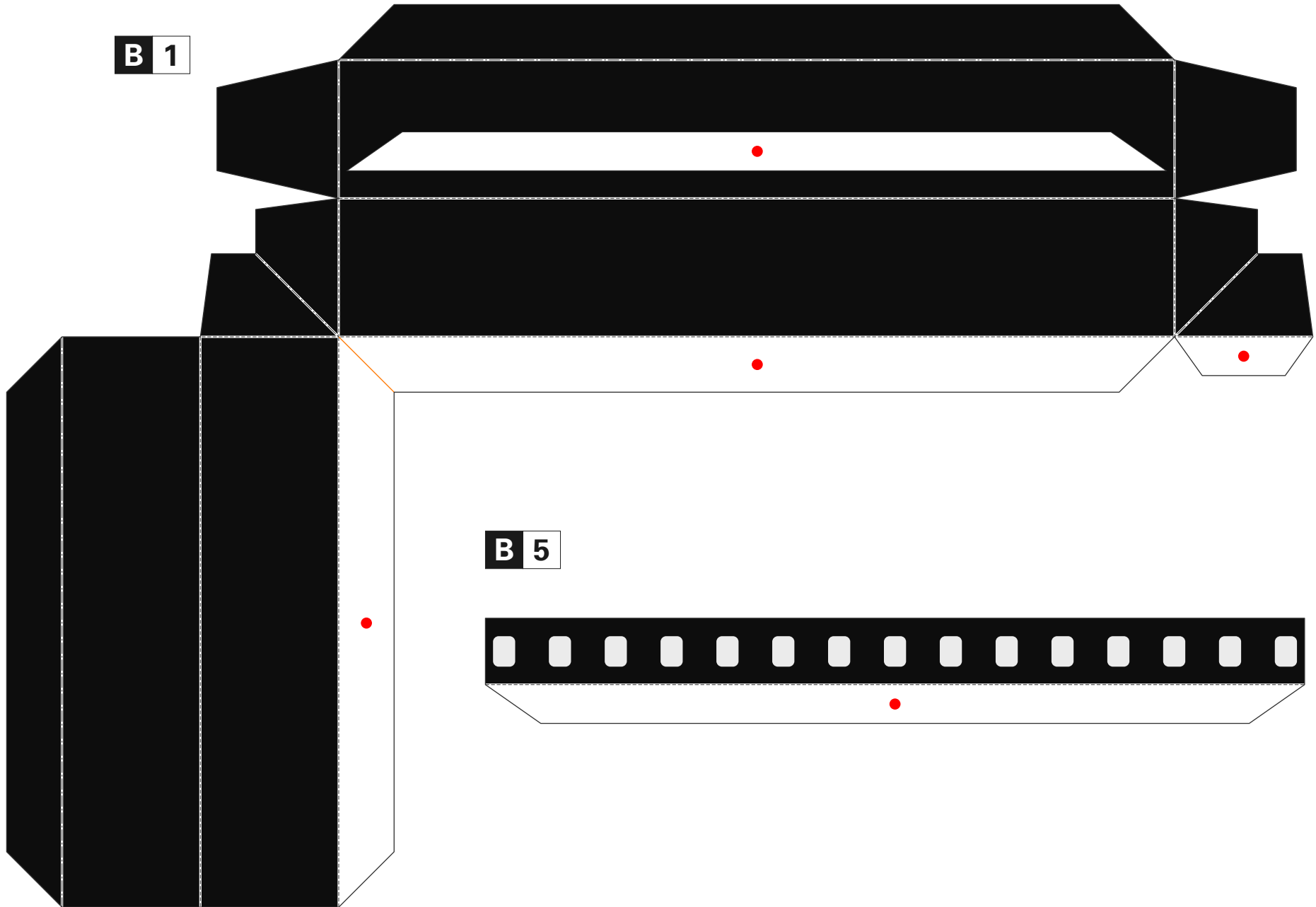
**A 7**



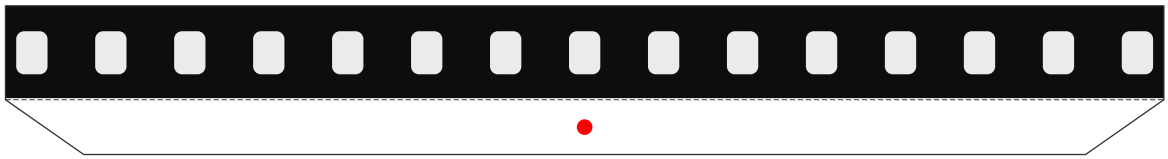
**A 5**



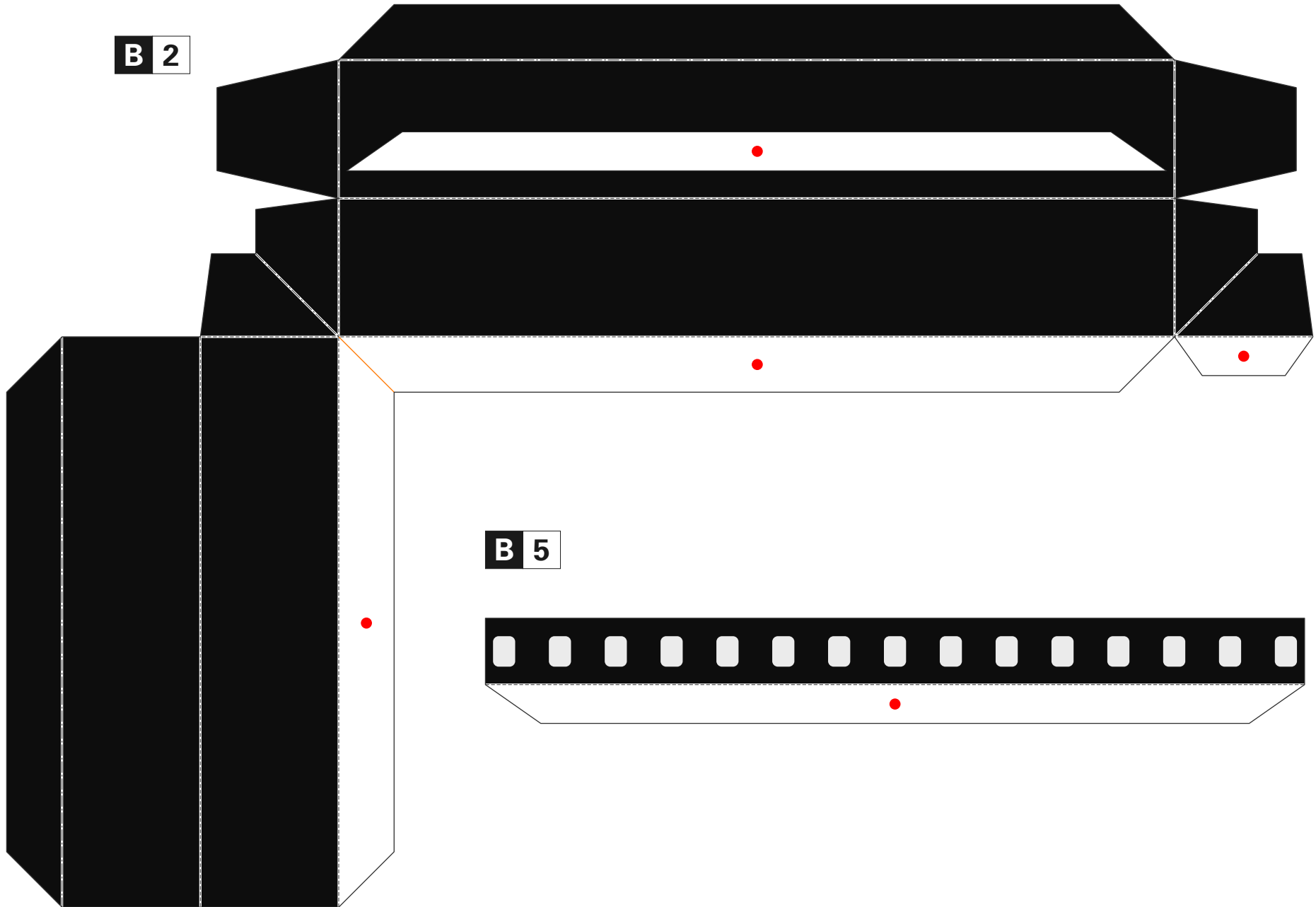
**B 1**



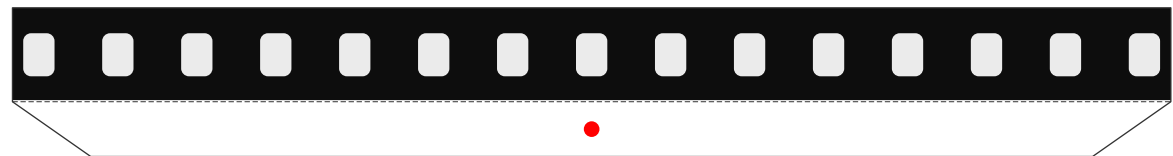
**B 5**



**B 2**



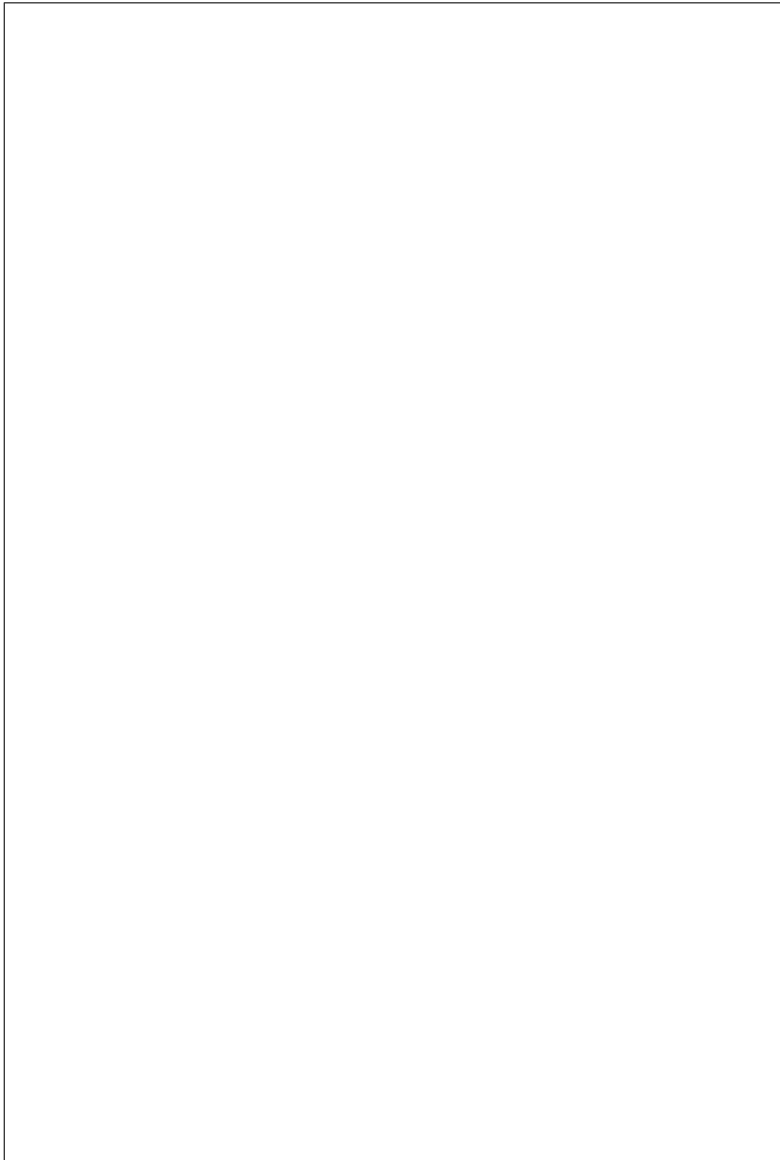
**B 5**



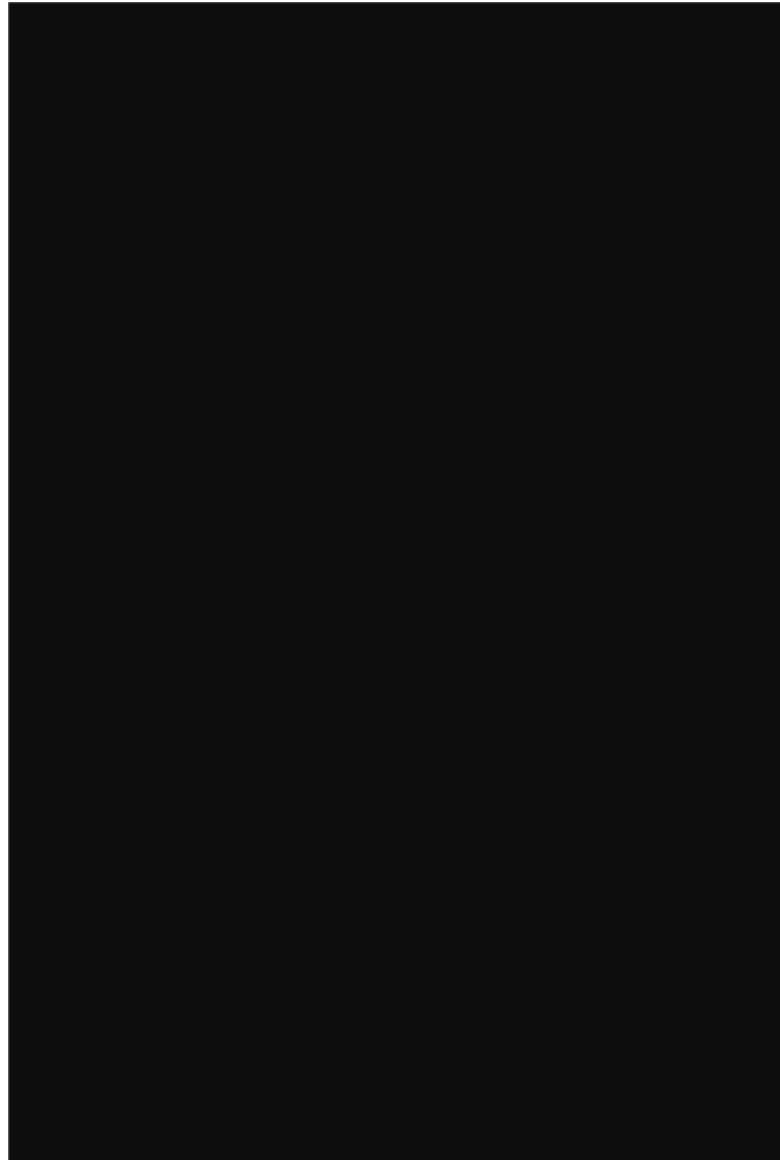
**B 3**



**B 4**



**B 6**



**B 7**

