

BELFORD BACKPACK

BY NICKI LAFOILLE
SAMPLE BY AMANDA CARESTIO



BELFORD BACKPACK

BY NICKI LAFOILLE,
SAMPLE BY AMANDA
CARESTIO

Create a high-end backpack in luxe velveteen that is perfect for your fall essentials. With a grommeted drawstring closure and handy pockets, this backpack is both useful and stylish.



SUPPLIES

- $\frac{3}{4}$ yard each of main fabric and lining fabric (See "Source.")
- $\frac{1}{2}$ yard of contrasting fabric
- Eight $\frac{3}{8}$ "-diameter grommets
- 1 yard of $\frac{1}{4}$ "-diameter cord
- Two 5" lengths of $\frac{3}{4}$ "-wide elastic
- Lightweight fusible interfacing (optional)
- $\frac{3}{4}$ "-diameter magnetic snap
- 5" length of 1"-wide grosgrain ribbon
- Removable fabric marker
- Cord stopper
- Seam sealant (optional)



FABRIC NOTES

We love how the Belford sews up in rich velveteen, but the fabric options are truly endless with this design. Sew it in canvas or nylon for a sporty look, novelty print cottons for a kid-friendly bag or denim or corduroy for a casual everyday feel. Note that heavier fabrics may not need additional interfacing for structure but may require additional fabric for nap.

PREPARE

Tile and print the pattern pieces; then cut out.

From the main fabric, cut one body and two 8"x26" rectangles for the straps. Cut a longer strap length if desired.

From the contrast fabric, cut one flap and two pockets.

From the lining, cut one lining body and one flap.

From the interfacing, cut one lining body. Fuse the interfacing body to the lining-body wrong side following the manufacturer's instructions.

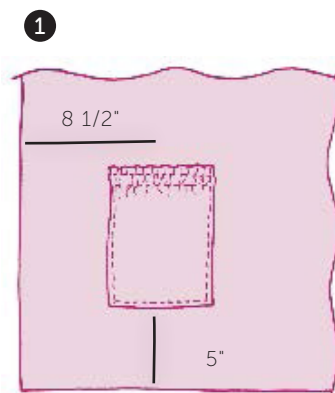
CONSTRUCT

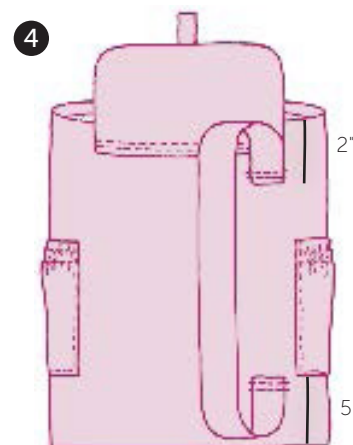
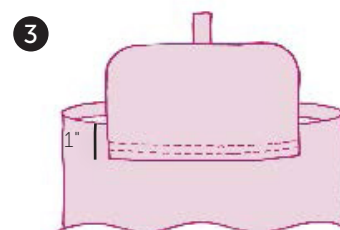
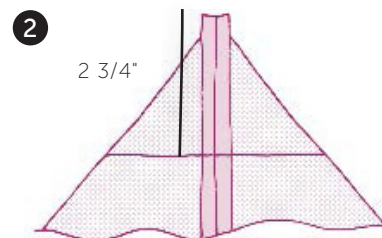
Use $\frac{1}{2}$ " seam allowances unless otherwise noted.

With wrong sides together, fold each strap in half lengthwise; press, and then unfold. Fold each long edge to abut at the center fold; press. Fold each short end $\frac{1}{2}$ " toward the wrong side; press. Fold along the center foldline.

Stitch the long open edge.

With right sides together, fold one pocket rectangle in half widthwise. Stitch the raw edges, leaving a 4" centered opening along one edge for turning. Clip the corners, and then turn the pocket right side out. Fold the opening seam allowances $\frac{1}{2}$ "





toward the wrong side; press.

Align one elastic short end with one pocket edge, $\frac{1}{4}$ " below the fold. Pin the opposite elastic end to the opposite pocket edge. Select a medium-width and length zigzag stitch on the machine. Stitch each elastic long edge, stretching the elastic to match the pocket width.

To gather the lower pocket edge, select a long basting stitch on the machine. Edgestitch the pocket lower edge. Pull the bobbin threads to evenly gather the pocket lower edge to measure 6". If you're working with a heavier fabric that resists gathers, pleat the pocket lower edge instead, ensuring the lower edge measures 6". Repeat to stitch the remaining pocket.

Place the fabric body rectangle right side up on a flat work surface. Measure and mark $8\frac{1}{2}$ " from each short edge and 5" from the lower edge. Center one pocket lower edge over each mark. Edgestitch the pocket sides and lower edge **(1)**. Remove the basting stitches.

Place the main-fabric flap right side up on a flat work surface. For a fabric tab, cut two $2\frac{1}{2}$ " squares from the contrast fabric. With right sides facing, stitch three sides; turn right side out,

press well and insert the magnet. Align the fabric tab raw edge or one ribbon raw edge with the flap curved-edge center. Align the lining flap right side down over the flap and ribbon or tab; pin.

Stitch the perimeter, leaving a 4" centered opening along the straight edge for turning. Clip the corners, and then turn the flap right side out. Fold the opening seam allowances $\frac{1}{2}$ " toward the wrong side; press.

Install the magnetic snap on the ribbon right side, centered $1\frac{3}{4}$ " from the ribbon end following the manufacturer's instructions. Fold the ribbon the wrong side just below the snap. Edgestitch the ribbon perimeter, making sure not to hit the snap prongs.

Install the other magnetic snap on the bag body according to the pattern marking, following the manufacturer's instructions.

With right sides together, fold the main fabric body in half widthwise. Stitch the long edge. Press open the seam. With the seam centered on the rectangle, press each side edge to form a crease. Stitch one short edge.

With right sides together, fold each corner to align the side crease with the lower seam. Measure and mark



$2\frac{3}{4}$ " from the triangle point. Draw a line across the triangle at the point **(2)**. Stitch along the line, and then trim the seam allowance to $\frac{1}{2}$ ". Repeat to box the remaining corner.

With right sides together, fold the lining body in half widthwise. Stitch the long edge, leaving a 5" centered opening for turning. Box the corners following the previous instructions.



With right sides together, insert the lining into the main bag. Align the upper edges; pin, and then stitch. Turn the backpack right side out through the lining opening. Insert the lining into the main bag, folding the main bag upper edge 1" toward the lining; press.

Mark the flap center along the straight edge. Align the flap mark with the backpack seam with the lining facing the backpack fabric and the flap extending 1" below the backpack upper edge. Topstitch $\frac{1}{4}$ " and $\frac{3}{8}$ " from the flap edge **(3)**.

Align one strap end with the flap edge 2" below the backpack upper edge on the back. Stitch $\frac{1}{4}$ " and $\frac{3}{8}$ " from the end. Align the remaining strap end 5" above the backpack lower seam. Stitch $\frac{1}{4}$ " and $\frac{3}{8}$ " from the end **(4)**. Repeat to attach the remaining strap

Mark the backpack at the center front. Mark the grommet placement $\frac{1}{2}$ " from the upper edge and 2" from each side of the center mark. Make six additional equidistant marks along the backpack upper edge. Install one grommet centered over each mark according to the manufacturer's instructions.

Thread the cord through the grommets. Thread each cord end through the cord stop, and then knot each cord end. Apply seam sealant to the cord ends to prevent fraying, if desired.

Insert the lining into the purse exterior with right sides together and aligning the seamlines and upper edges; pin. Stitch the bag upper edge.

Turn the bag right side out through the lining opening. Push the lining into the purse exterior with wrong sides together; press the upper edge.

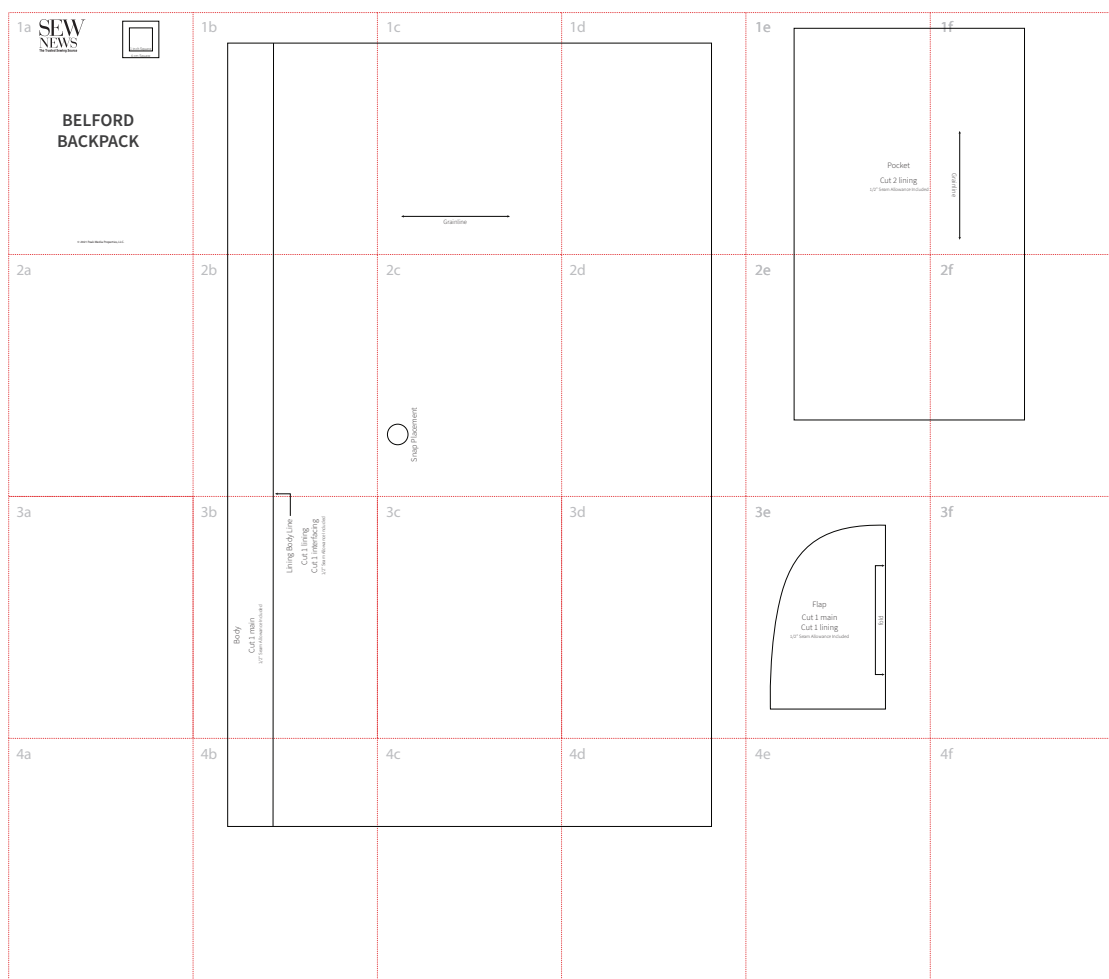
Topstitch the purse upper edge.

Hand stitch the lining opening closed.

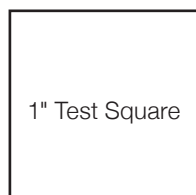
Insert one snap-loop short end into the metal ring and attach to the corresponding male snap on the lining.

Repeat for remaining snap loop. 

BELFORD BACKPACK

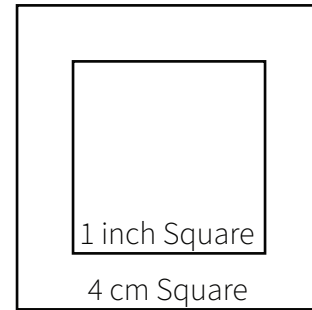


Template overview



18 pages: 1a–4d

Print this page first at 100%, then measure the 1" test square before printing full pattern.

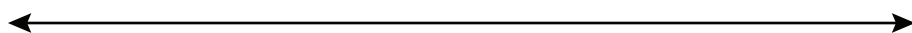


BELFORD BACKPACK

1b

--	--

1c



Grainline

1d

1e

Pocket

Cut 2 lining

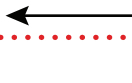
1/2" Seam Allowance Included

1f

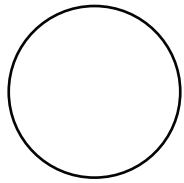
Grainline



2b



2c



Snap Placement

2d

2e

2f

3b

Body

Cut 1 main

1/2" Seam Allowance Included

Lining Body Line

Cut 1 lining

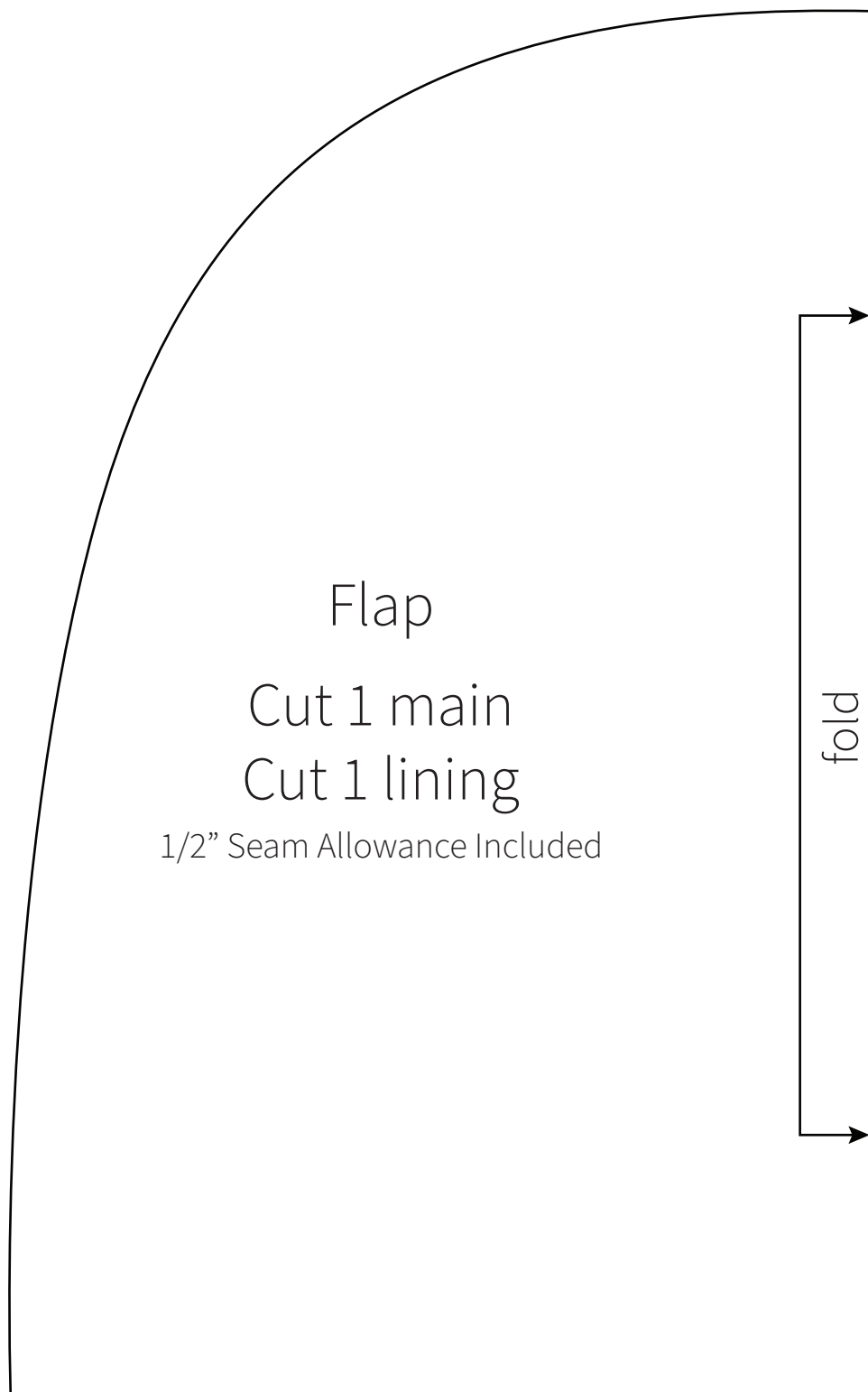
Cut 1 interfacing

1/2" Seam Allowance Included

3c

3d

3e



4b

4c

4d