

VogueKnitting  
presents

# knitsimple™

yarn+life+fun

spring/summer 2006

## fresh picked!

easy crocheted flowers  
for pretty knits

U.S. \$5.99  
CANADA \$7.99\*  
\*Recommended Price  
Display until 7/18/06

\$5.99US \$7.99CAN



04>

0 74470 28333 1

one look, four great ways  
simple stripes for everyone  
fabulous floral fixations  
& an afghan for all seasons





*Dress code for our garden  
party: soft separates  
that blossom just so.*

*Petal*



## Strike a posy

### 1 SHORT-SLEEVED TOP

Delicate picot bind-off edging and eyelet-detailed raglan armholes cultivate a frankly feminine look.

DESIGNER: Katharine Hunt

YARN: SUPER 10 by S.R. Kertzer, Ltd.

KNIT TIP: The crocheted flower with embroidered French knots can also be sewn to a ribbon and worn as a choker.



# Pushers





*Knitted belle's and crocheted shells  
and pretty maids all in a row.*



# *Sawn over flora*

## 2 EYELET-RIB TANK

Flirt all you want in this sweetly cheeky top cinched below the bust with chain-stitch ties.

DESIGNER: Cornelia Tuttle Hamilton

YARN: NATURE COTTON by Araucania/KFI

KNIT TIP: By shifting from an eyelet rib to a closed rib at the bodice, you go from daring to demure without batting an eyelash.

## 3 FLOWER PIN AND CROCHETED CLOCHE

Cross-pollination of the prettiest kind: Plant a lovely looped flower brooch on a simple hat worked in a double-crochet shell-stitch mesh.

DESIGNERS: Marianne Forrestal (pin) and Tanis Gray (hat)

YARN: BAMBOO by Alchemy Yarns of Transformation

KNIT TIP: The flowers are merely strips of single crochet twisted to form the petals.

## 4 SLEEVELESS TOP WITH FLOWERS

Romance blooms unabashedly on this ethereal tank, whose deep rounded V neck brims with crocheted flowers and leaves.

DESIGNER: Elena Malo

YARN: GRACE by Patons

KNIT TIP: A loose gauge on big needles creates a meshy look.







5  
25 ORIGINAL "CHARLOTTE" SKIRT AT ZACHARY'S SMILE, 9 GREENWICH AVE., NYC; (PH) GUY ARIEN AND 217 LAFAYETTE ST. (RT) 905-8348



## rows of roses

### 5 FLORAL JACKET

Gather ye rosebuds at the center of a flowing cardigan that's edged with crocheted trim and ties.

DESIGNER: Galina Carroll

YARN: KATRINA by Patons

KNIT TIP: No increasing is required for these wide bell sleeves.

### 6 SLEEVELESS LEAF TOP

Transplanted knitted roses are strewn amid an eyelet-leaf pattern on one side of this alluring design.

DESIGNER: Elena Malo

YARN: HANDICRAFTER COTTON by Bernat

KNIT TIP: Ribbing and garter ridges add definition at the edges and at the notched collar.

6



*Perennially fresh as daisies, knitted flowers never wither.*



# Bouquet of Crochet

Craft imitates nature:  
Six petals curl around a  
center bud. Delicate leaves  
add a breath of spring.

## CROCHET FLOWERS

**SIZES** Small (Medium, Large) flowers

### MATERIALS

• DMC Six-Strand Embroidery Floss, each skein 8.7yd/8m (100% cotton)  
For each flower: 1 skein in each of two colors (choose from #601 Dark Cranberry, #602 Medium Cranberry, #606 Bright Orange-Red, #666 Light Christmas Red, #818 Baby Pink, #891 Dark Carnation, #947 Burnt Orange, #963 Ultimate Very Light Dusty Rose, #3801 Christmas Red, #B5200 Bright White) or colors of your choice.

For each leaf: 1 skein of green (choose from #164 Light Green, #472 Avocado Green Ultimate Light, #703 Chartreuse and #912 Light Emerald Green) or colors of your choice

• Steel crochet hooks #0 (3.25mm) for flower and size 2 (2.25mm) for leaves

### MEASUREMENTS

Flower circumference 1½ (2, 2½)"/4 (5, 6.5)cm

### GAUGE

6 sc = 1"/2.5cm with #0 (3.25mm) hook

### FLOWER CENTER

With first flower color, ch 9 (13, 17). Row 1: Work 2 sc in 2nd ch from hook

and in each ch to end—16 (24, 32) sc. Ch 1, turn. Row 2: Work 2 sc in each sc—32 (48, 64) sc. Ch 1, turn. Next 1 (2, 3) rows: Work sc in each sc, working ch 1 to turn at end of each row. Fasten off.

### INNER PETALS (make 3)

With 2nd flower color, ch 4 (5, 7). Row 1: Work 2 sc in 2nd ch from hook and in each ch to end—6 (8, 12) sc. Ch 1, turn. Row 2: Work 2 sc in each sc—12 (16, 24) sc. Ch 1, turn. Work 0 (1, 3) rows even in sc. Next 2 rows: Sc2tog each side of every row—8 (12, 20) sts. Work 1 row even in sc. Fasten off.

### OUTER PETALS (make 3)

With 2nd flower color, ch 5 (6, 8). Row 1: Work 2 sc in 2nd ch from hook and in each ch to end—4 (5, 7) sc. Ch 1, turn. Row 2: Work 2 sc in each sc—16 (20, 28) sc. Ch 1, turn. Work 0 (1, 3) rows even in sc. Next 3 rows: Dec 1 st each side of every row—10 (14, 22) sts. Work 1 row even in sc. Fasten off.

### LEAVES (make 3)

With a leaf color, ch 11 (15, 19). Rnd 1: Work sc in 2nd ch from hook, work tr in next 2 ch, work dc in next 4 (8, 12) ch, work 2 tr in next 2 ch, work sc in last ch; work in same way


along opposite edge of foundation chain, join with sl st to first st. For Small flower only: Fasten off. Next rnd—for Medium and Large flower only: Work 1 sc in each st, working 3 sc at point of leaf, join to first sc. Fasten off.

### FINISHING

Weave in all ends. Roll the center piece around itself and tack closed at several points. Wrap the inner petals around the center and sew in place at the base. Attach the outer petals in same way. Pin the leaves to the flower as desired, then sew them in place.







Perky blooms give new life  
to spring hats and sweaters.  
Sew a safety or brooch  
pin to the back of a  
flower to make a corsage.



1 Go long or short, armed or not, to customize your own sleek silhouette from one basic body shape.

7 BELOW HIP LENGTH, THREE-QUARTER SLEEVES, SIDE TIES

This variation skims the hips and bares the wrists.

YARN: Double strand of CONTRASTO by Skacel

KNIT TIP: Chain-stitch ties are an easy entrée into the world of crochet. Just link them up and sew them on.



7  
Extra-Large  
Sizing

# ONE SWEATER FOUR WAYS

A single surplus-top pattern sets up a surplus of sublime looks.



8  
Extra-Large  
Sizing

2  
TUNIC LENGTH,  
SLEEVELESS

Highlight height and elegant arms with a dramatic elongated vest.

YARN: CHRYSALIS by  
Colinette Yaros/Unique  
Kolours

KNIT TIP: Self-finishing  
edges—a hallmark of all  
four garments—roll neatly  
no matter how you wear it.





**9**  
Extra-Large  
Sizing

**9 WAIST LENGTH, LONG  
SLEEVES, SIDE TIES**

Flattering on most body types,  
the classic wrap top reveals  
curves and conceals the rest.

YARN: GOA by Muench  
Yarns/GGH

KNIT TIP: Full-fashioned  
decreases at the front edges  
assist in form-fitting.





BIG **STICKS** AND LARGE-GAUGE STRING ARE INSTRUMENTS FOR STITCHING THIS QUARTET IN **RECORD TIME**.

4

10 HIP LENGTH, SLEEVELESS, SIDE TIES

A variegated vest is the ultimate in casual chic.

YARN: TICKER TAPE by Moda Dea/Coats & Clark

KNIT TIP: For a great office option, work up this version in a solid color and slip it over a tailored button-down.

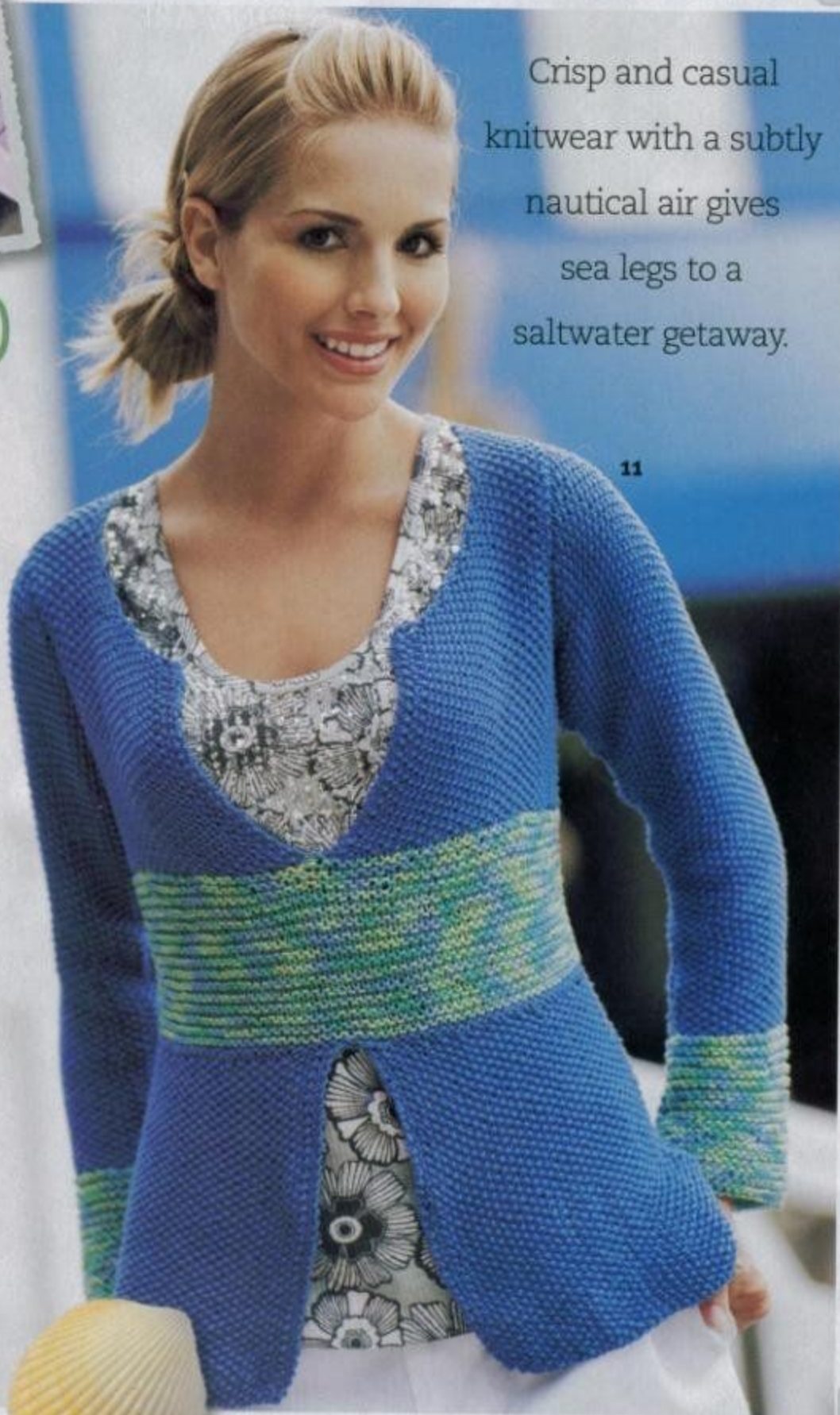
10  
Extra-Large  
Sizing







# It's a Shore Thing



Crisp and casual  
knitwear with a subtly  
nautical air gives  
sea legs to a  
saltwater getaway.

11





12

# 11 OPEN-FRONT PULLOVER

With a funky variegated garter-stitch band bisecting the surrounding seed stitch, this deep-neck design is meant to announce the arrival of a beachworthy bod.

DESIGNER: Cornelia Tuttle Hamilton

YARNS: COTTON CLASSIC and COTTON CLASSIC COLOR by Tahki Yarns/Tahki•Stacy Charles, Inc.

KNIT TIP: It is very important to get your gauge right to ensure the form-hugging fit this sweater demands.

# 12 SLEEVELESS TOP

Here's a self-finishing drop-stitch pattern so speedy, you can cast on when you board the jitney, knit it *en route* and wear it to dinner that very night.

DESIGNER: Heather Bagni

YARN: INCREDIBLE by Lion Brand Yarn

KNIT TIP: When knitting the row after you drop the yarn overs, pull a bit tighter than usual to avoid loose or uneven stitching.

Sexy beachwear can be more than barely there.



## decked out for a dock holiday

### 13 WOMAN'S STRIPED TOP

This cleverly assembled sleeveless pullover is shipshape and ready for a sail.

DESIGNER: Jordana Paige

YARN: MICROSPUN by Lion

Brand Yarn

KNIT TIP: The lower front edge is worked vertically to the bustline, then attached to two separate horizontally knit bands.

13





#### 14 MAN'S VEST

Cables travel down the front and back of a striped vest, which boasts generous armholes for hoisting the mainsail.

DESIGNER: Jennifer Appleby

YARN: ORGANIC COTTON by Blue Sky Alpacas

KNIT TIP: Been putting off that first cable project? Uncomplicated single twists like this one are a natural first step.

14

Check out the cut of his jib in a yachty vest.





# BABY LOVE



15

PHOTOGRAPH THIS PAGE: JEAN-BAPTISTE PELLERIN/MARIE CLAIRE IDEES. OPPOSITE: MARCUS TULLIS

Congratulations—it's a girl! Break out the pink yarn and get going on her first hand knits—mini layettes as sweet as she is.



**15 SHORTALLS AND  
CARDIGAN**

Stripes and flowers adorn  
a darling (and deceptively  
simple) stockinette  
duo. (The booties, alas,  
are store-bought.)

**YARN: COTTON PLUS**

by Coats & Clark

**KNIT TIP:** The flowers  
on the shortalls are  
actually cross-stitched on  
after the piece is knit.

**16 BUNNY CARDIGAN,  
HAT AND BLANKET**

Doting admirers will  
multiply like rabbits when  
baby shows off this three-  
piece set.

**DESIGNER:** Amy Bahrt

**YARNS:** COTTON CLASSIC

and JOLIE by Tahki Yarns/

Tahki•Stacy Charles, Inc.

**KNIT TIP:** The ears  
and tails of the intarsia  
bunnies—all stitched in  
white angora—are made  
separately and sewn on.





stripe a match



17

# get in line!

Bright and breezy stripes  
quicken the  
pulse without thickening  
your torso.



## 17 WOMAN'S PULLOVER

for maximum visual impact, this sweater's stripes alternate at the center front, drawing the eye up, not across.

DESIGNER: Sandi Prosser

YARN: OLÉ OLÉ by Reynolds/JCA

KNIT TIP: With so many color shifts, you'll enjoy the fruits of your labor sooner if you weave in ends as you go.

## 18 MAN'S CREW NECK

A trio of primary shades pops against the muted sage at the core of this pullover.

DESIGNER: Carla Scott

YARN: LION COTTON by Lion Brand Yarn

KNIT TIP: Don't get sloppy when setting in the sleeves. Line up the stripes for a seamless flow from arm to body to arm.

18

broad band  
connection





19



top of the  
opticals

**19 WOMAN'S CROPPED VEST**  
Variegated skeins do the banding for you, while solids pipe the stripes.

DESIGNER: Margery Winter  
YARNS: BOHO and BOHO COLORS by Berroco

KNIT TIP: It's OK if the stripes on the left don't correspond to those on the right; whimsy is what you get with a playful project in self-stripping yarn.

Cheery horizontals holler, "Spring's here!"



## 20 GIRL'S VEST

fuzzy and fanciful, this strappy pullover is as tactile as can be, thanks to reverse-stockinette stitching in four shades of a texture-morphing fiber.

DESIGNER: Fayla Reiss

YARN: PANDORA by Trendsetter

KNIT TIP: Like the flowers on the strap? Knit a few extra and attach them along the hemline, then dot the body with ribbons.

## 21 SKINNY SCARF

Large pompoms cheer on a no-fuss, quick-knit, wide-streaked scarf.

DESIGNER: Tanis Gray

YARN: TWINKLE by N.Y. Yarns

KNIT TIP: For extra punch, throw another color block or two into the mix.

21

line dance



20





# Beach Combers

FRIENDLY SEA CREATURES IN  
SUPEREASY DUPLICATE  
STITCH BRING WARM SMILES  
TO A DAY AT THE SHORE.

## OCTOPUS AND STARFISH HOW-TO

To make your knitting stress-free, the octopus and starfish are embroidered on after the knitted pieces are completed.

The pattern tells you where to position the designs; we provide detailed instructions on how to do duplicate stitch.

### 22 KIDS' PULLOVERS

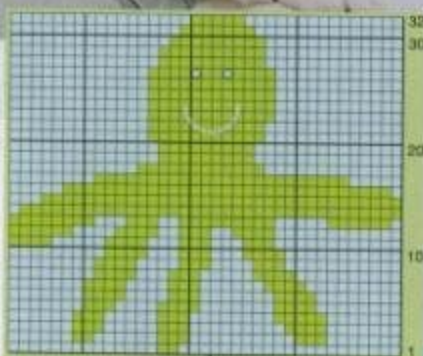
Both quick-knit cotton-blend sweaters are worked exactly the same way—all stockinette with rolled edges—but with different motifs and color schemes.

DESIGNER: Jennifer Appleby

YARN: WILDFLOWER D.K.

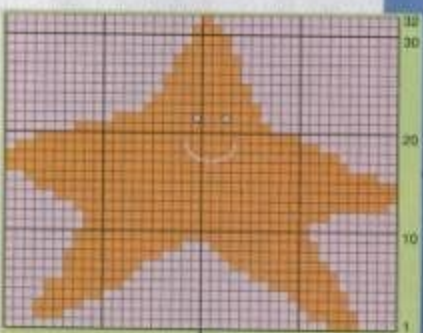
by Plymouth Yarn

KNIT TIP: Both creatures' faces are embroidered using French knots for eyes and stem stitch for the mouths.



#### Color & stitch key

- Blue (mc)
- Green (cc)
- Blue french knot (mc)
- Blue stem stitch (mc)



#### Color & stitch key

- Pink (mc)
- Orange (cc)
- Pink french knot (mc)
- Pink stem stitch (mc)

22



# LITTLE RED

To grandma's house  
and beyond,  
red gives her the  
confidence to  
take on the world.

## DROP STITCH



Pick up the right side of the next  
white stitch 2 rows below, inserting  
the needle from back to front.



The 2 rows of red stitches above the  
white stitch are unraveled, as shown  
here on the WS of the work.





## EASY ACCENTS



Embroider running stitch by weaving yarn under and over 2 knit rows vertically and 1 stitch horizontally.



Make 1½ yds/1.4m of twisted cord from red yarn and weave it under and over 2 stitches along the hood edge.

### 23 SHORT-SLEEVE DRESS

This easy-wear frock has a wide round neck, fold-under hems and a classic girl's line.

**YARN:** COTTON GLACE from Rowan/Westminster Fibers

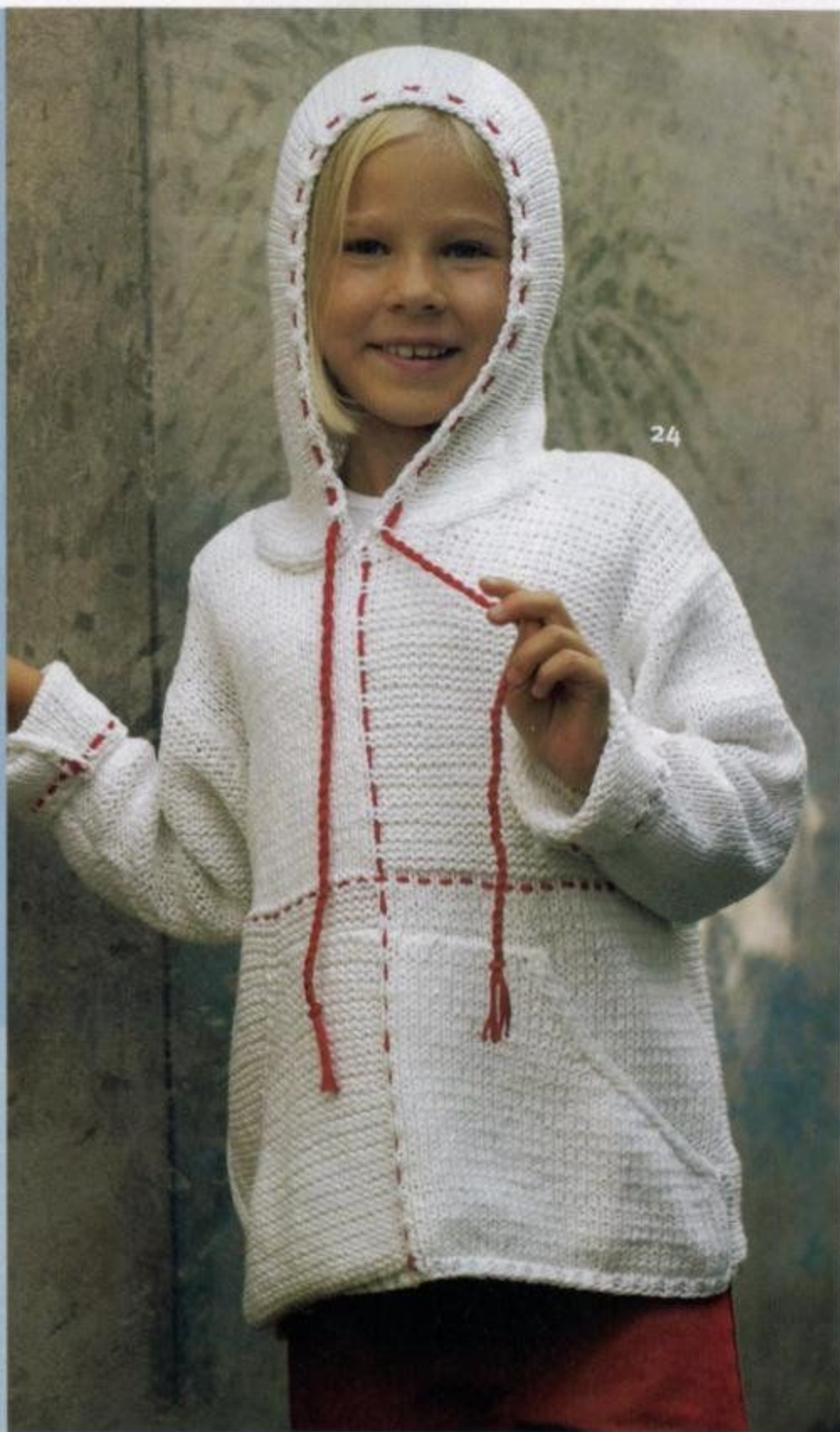
**KNIT TIP:** The bodice's elongated drop-stitch pattern (detailed at left) is a cinch to keep track of, thanks to the bicolor scheme.

### 24 HOODED JACKET

Alternating blocks of stockinette and reverse stockinette add textural interest to a crimson-threaded hoodie.

**YARN:** CILANTRO from Nashua Handknits

**KNIT TIP:** The broad pocket is picked up and knit along the upper edge of the ribbing.



What big stitches you have! Red accents update the fabled hoodie.



## 25 GIRL'S PULLOVER

A hint of Tyrolean charm in the form of perfectly placed embroidered flowers marks a garter-stitched pullover.

**YARN:** Cotton Glace from Rowan/Westminster Fibers

**KNIT TIP:** A row of single crochet, followed by a row of slip stitches, neatens the neckline, cuffs and lower edges.

### FLOWER HOW-TO



To embroider the flowers, make  $\frac{1}{4}$ "/2cm straight stitches, crossing them as shown.



Embroider a cross-stitch over the intersection of the first 4 stitches to secure the center of the flower.



Your little maid will love how red and white separate her from the purple-clad pack.



It's never too early to accessorize. A sporty sack trumps a goodie basket every time.

#### FINAL FINISH



A row of single crochet in a contrasting color adds a tailored border to the outer edges of the vest and scarf.



For the purse-flap embroidery, make a cross-stitch with two  $\frac{1}{4}$ "/2cm stitches. Then, make a  $\frac{1}{4}$ "/6mm vertical stitch over the intersection of the cross-stitch.

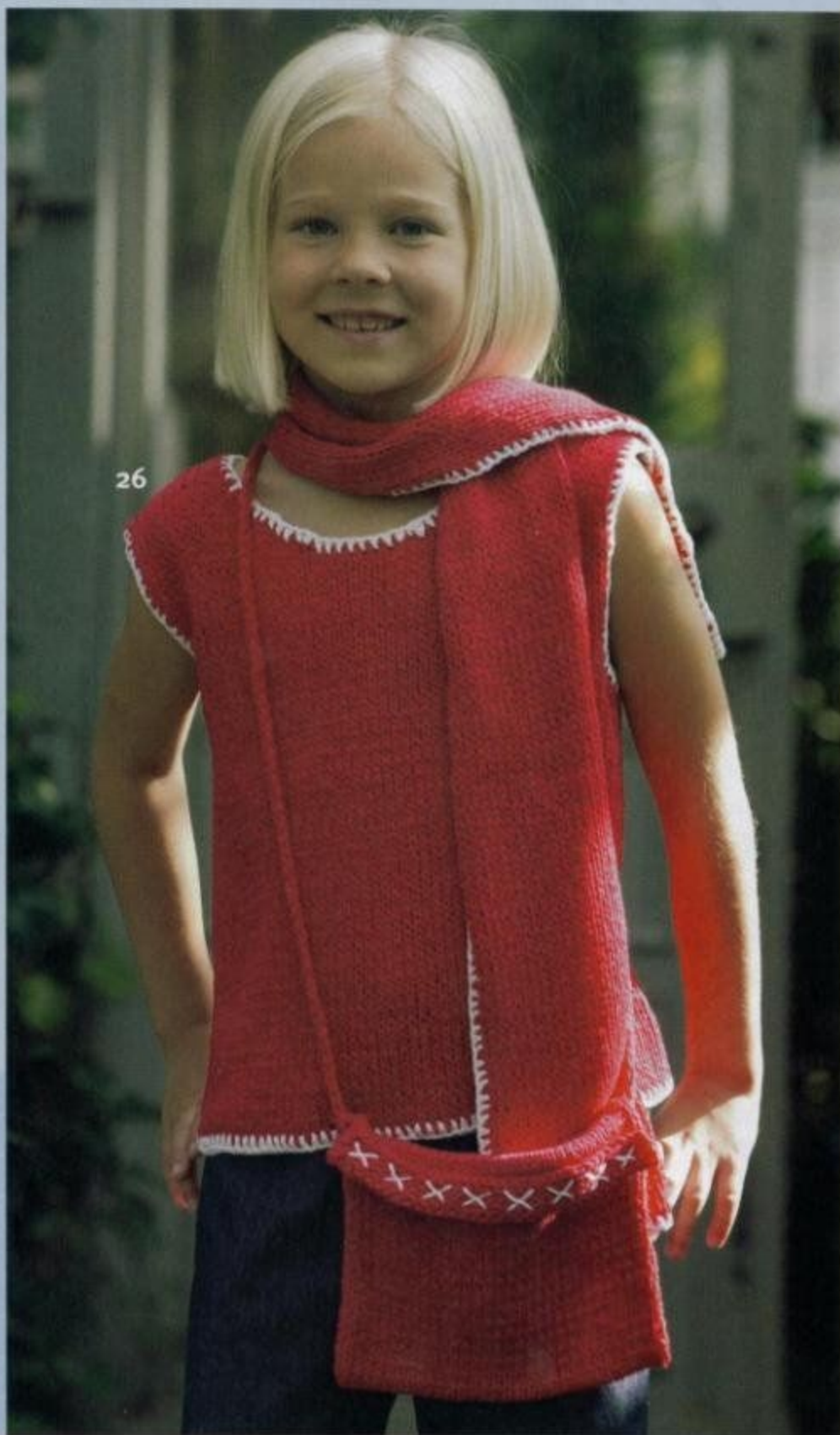
#### 26 VEST, SCARF AND PURSE

In simple stockinette edged with crochet, this timeless trio will appeal to even the youngest budding fashionista.

**YARN:** CILANTRO from Nashua Handknits

**KNIT TIP:** Let her embroider the cross-stitches on the purse's front flap—she'll be extra proud to carry it.

26





# a year in yarn

KS staff  
knit pick

PHOTOGRAPH BY MARCUS TULLIS





Redefine "a stitch in time" with monthly motifs on our calendar afghan.

**WHO:** Designed by Gitta Schrade

**WHAT:** Intarsia squares with seasonal motifs mark every month; stars and stripes are on patriotic border duty.

**WITH:** PERENDALE 8 PLY by Naturally Yarns

**WEAR:** Drape over a sofa, on a twin bed...or hang it on the family-room wall.

**WHY:** You're a knitter year-round—celebrate that!

**WOW FACTOR:** If this doesn't have the makings of a family heirloom, we don't know what does.



# here's show!

## 1 short sleeve top



Super 10

Sized for X-Small (Small, Medium). Shown in size Small on pages 30 and 31.

### MATERIALS

Super 10 by S. R. Kertzer, Ltd., 4.4oz/125g balls, each approx 250yd/230m (cotton)

- 3 (3, 4) balls in #3525 cornsilk
- One pair each sizes 5 and 6 (3.75 and 4mm) needles OR SIZE TO OBTAIN GAUGE
- Size 5 (3.75mm) circular needle 16"/40cm

### For Flower

Coats Opera 5 by Coats & Clark, 1½oz/50g balls, each approx 192yd/175m (cotton)

- 1 ball in #502 cream
- Small amount of Super 10 for French knot centers
- Size B-1 (2.25mm) crochet hook
- Two small safety pins

### MEASUREMENTS

- Bust 33 (37, 40)"/83.5 (94, 101.5)cm
- Length 18 (19, 20)"/45.5 (48.5, 50.5)cm
- Upper arm 16 (17, 18)"/40.5 (43, 45.5)cm

### GAUGE

22 sts and 29 rows to 4"/10cm over St st using larger needles. TAKE TIME TO CHECK YOUR GAUGE.

### PICOT POINT EDGING

To bind off a multiple of 4 sts plus 2. Bind off 2 sts, \*sl rem st on RH needle to LH needle, cable cast on 2 sts, bind off 5 sts; rep from \* to end. Fasten off rem st.

### BACK

With larger needles, cast on 90 (102, 110) sts. **Row 1 (RS)** P2, \*k2, p2; rep from \* to end. **Row 2** K the knit sts and p the purl sts. Rep rows 1 and 2 for k2, p2 rib until piece measures 6½"/16.5cm from beg (48 rows). Change to St st and work even until piece measures 10 (10½, 11)"/25.5 (26.5, 28)cm from beg, end with a WS row.

### Shape raglan armhole

Bind off 6 (6, 7) sts at beg of next 2 rows—78 (90, 96) sts.

**Dec row (RS)** K1, ssk, yo, ssk, k to last 5 sts, k2tog, yo, k2tog, k1. **Next row** P1, k1, p to last 2 sts, k1, p1. Rep last 2 rows 23 (25, 27) times more. Bind off rem 30 (38, 40) sts.

### FRONT

With larger needles, cast on 90 (102, 110) sts.

### Beg chart

**Row 1 (RS)** Beg as indicated work to end of chart for chosen size (center of piece), work chart backwards from center (from left to right), end as indicated. Cont in pat as established until all chart rows have been worked—piece measures 6½"/16.5cm from beg. Change to St st and work even until piece measures same length as back to armhole.

### Shape raglan armhole

Work as for back until there are 48 (58, 60) sts.

### Shape neck

**Next row (RS)** Work armhole dec, k10 (13, 13), join 2nd ball of yarn and bind off center 18 (22, 24) sts; work to last 5 sts, work armhole dec. **Next row** Work to last 2 sts on first half, p2tog; on 2nd half, p2tog, work to end. **Next row** Work armhole dec, work to last 3 sts on first half, k3tog; on 2nd half, k3tog, work to last 5 sts, work armhole dec. Rep last 2 rows twice more—2 (5, 5) sts each side.

**For size X-small only** Dec 1 st at each neck edge on next row. Fasten off.

**For size Small and Medium only** Dec 1 st at each neck edge on next row. Dec 1 st each armhole and neck edge on next row. K2tog each side and fasten off.

### LEFT SLEEVE

With larger needles, cast on 88 (94, 100) sts. K 4 rows. Cont in St st for 2 rows.

### Shape raglan cap

Bind off 6 (6, 7) sts at beg of next 2 rows—76 (82, 88) sts. Work dec row as for back raglan

every RS row 6 (8, 10) times—64 (66, 66) sts. Mark the center 6 sts and work central decs as foll: **Center dec row (RS)** Work armhole dec, work to center 6 sts, ssk, k2, k2tog, work to last 5 sts, work armhole dec. Work 5 rows with armhole decs only. Rep center dec row. Rep last 6 rows 3 times more—26 (28, 30) sts. **Next row (WS)** Bind off 15 sts (neck edge), work to end—13 (15, 15) sts. Cont to work armhole decs and dec 1 st at neck edge every other row until 1 st rem. Fasten off.

### RIGHT SLEEVE

Work to correspond to left sleeve, reversing shaping at top of sleeve cap.

### FINISHING

Block pieces to measurements.

### Sleeve edging

With WS facing and smaller needles, pick up and k 86 (94, 98) sts along lower edge of each sleeve. Work picot point edging to bind off.

Sew raglan sleeve caps to raglan armholes.

### Neck edging

With RS facing and circular needle, beg at left back shoulder seam, pick up and k 21 (23, 26) sts along top of left sleeve, 10 (12, 13) sts along left front neck edge, 18 (22, 26) sts along center front neck, 10 (12, 13) sts along right front neck, 21 (23, 26) sts along right sleeve and 30 (38, 42) sts along back neck—110 (130, 148) sts. P next rnd, dec 4 (4, 6) sts evenly across back neck—106 (126, 142) sts. K 1 rnd, p 1 rnd. Work picot point edging to bind off.

Sew side seams.

### FLOWER

**Note** Flower consists of three petal layers: large, medium and small.

### Large (6 petals)

#### Center

Ch 6. Join with sl st to first ch to form ring.

**Rnd 1** Work 12 sc in ring. Ch 1.

**Rnd 2** [2 sc in next sc, 1 sc in next sc] 6 times—18 sc. Ch 1.

**Rnd 3** [2 sc in next sc, 1 sc in next 2 sc] 6 times—24 sc. Ch 1.

**Rnd 4** [2 sc in next sc, 1 sc in next 3 sc] 6 times—30 sc. Ch 1.

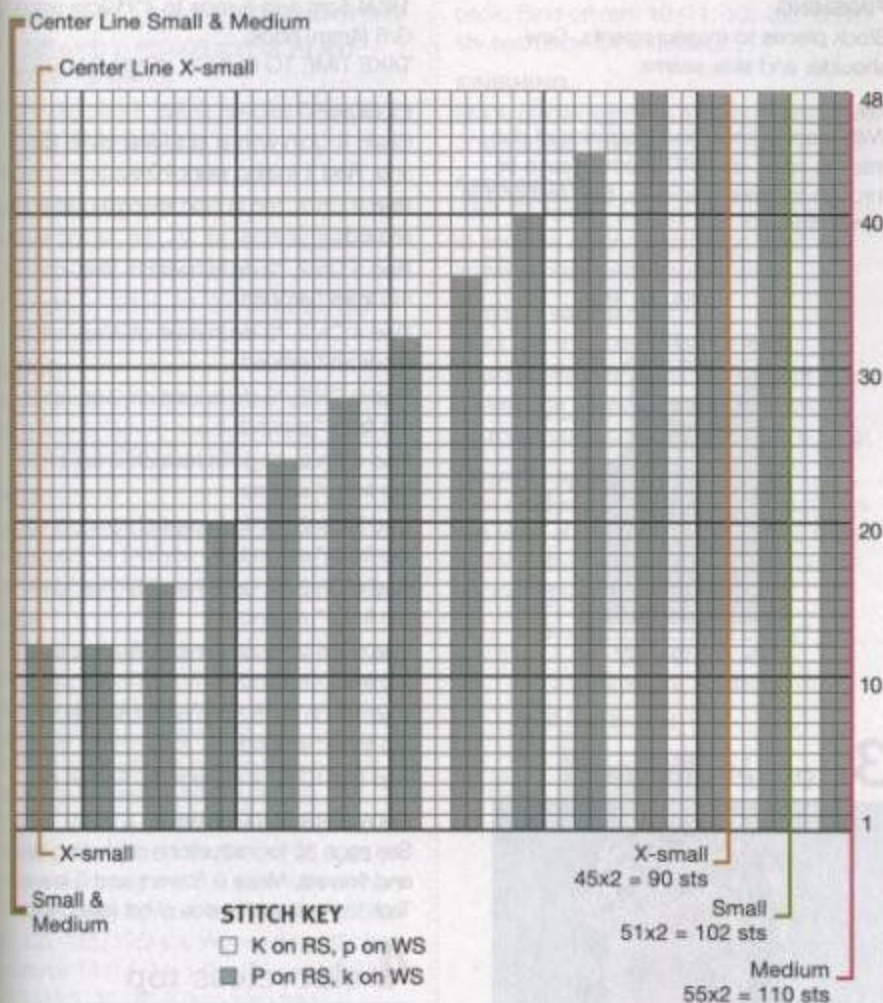
**Rnd 5** [2 sc in next sc, 1 sc in next 4 sc] 6 times—36 sc. Ch 1.

#### Petals

**Row 1** Sc in next 6 sc. Ch 1, turn.

**Rows 2-5** Rep row 1.





**Row 6** Dec 1 sc, sc in next 2 sts, dec 1 sc. Fasten off.

Rep rows 1–6 five times more for a total of 6 petals.

#### Medium (5 petals)

##### Center

Ch 5. Join with sl st to first ch to form ring.

**Rnd 1** Work 10 sc in ring. Ch 1.

**Rnd 2** [2 sc in next sc, 1 sc in next 2 sc] 5 times—15 sc. Ch 1.

**Rnd 3** [2 sc in next sc, 1 sc in next 2 sc] 5 times—20 sc. Ch 1.

**Rnd 4** [2 sc in next sc, 1 sc in next 3 sc] 5 times—25 sc. Ch 1.

##### Petals

**Row 1** Sc in next 5 sc. Ch 1, turn.

**Rows 2–3** Rep row 1.

**Row 4** Dec 1 sc, sc in next sc, dec 1 sc. Fasten off.

Rep rows 1–4 three times more.

**3th petal** Work rows 1–3.

**Row 4** Dec 1 sc, sc in next sc, dec 1 sc,

using last st worked and next st and fasten off tog.

#### Small (4 petals)

##### Center

Ch 4. Join with sl st to first ch to form ring.

**Rnd 1** Work 8 sc in ring. Ch 1.

**Rnd 2** Sc in each sc.

**Rnd 3** 2 sc in each sc—16 sc.

##### Petals

**Row 1** Sc in next 4 sc. Ch 1, turn.

**Row 2** Rep row 1.

**Row 3** Dec 1 sc, dec 1 sc, using last st worked and next st and fasten off tog.

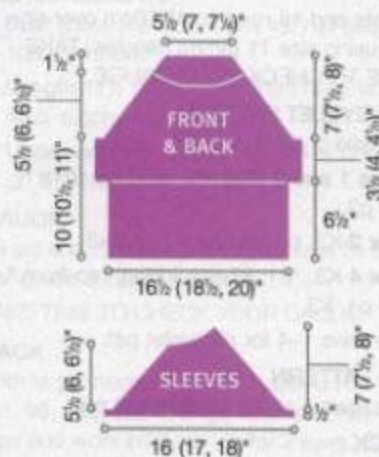
Rep rows 1–3 three times more for a total of 4 petals.

#### To stiffen and shape petals

(Do this on a clean surface where you can leave the petals until they dry)

Using a small paint or toothbrush, brush the petals with a dilute mixture of white glue and water. Gently round the petals

up so they look natural, and support them on the outside with small objects like pencils to hold them in position. Allow to dry. Place medium layer on top of large layer and small layer on top. Rotate them until the petals look natural and slightly off center. Tack them tog using a needle and white thread. Take a strand of the body cotton, and remove one or two of the plies to make it thinner. Using an embroidery needle and this strand, work a circle of 8 French knots around the center of the top petal layer. Pin flower to center front of garment.



## 2 sleeveless top



Nature Cotton



Sized for X-Small (Small, Medium, Large). Shown in size Small on page 32.



## MATERIALS

Nature Cotton by Aracucania/KFI, 3½oz/100g balls, each approx 105yd/95m (cotton)

- 3 (4, 4, 5) balls in #3 yellow
- Small amount in #25 magenta for tie
- One pair size 11 (8mm) needles OR SIZE TO OBTAIN GAUGE
- Size L/11 (8mm) crochet hook (for tie)

## MEASUREMENTS

- **Bust** 29 (34, 39, 44)"/73.5 (86.5, 99, 111.5)cm
- **Length** 21 (22, 23, 24)"/53 (56, 58.5, 61)cm

## GAUGE

13 sts and 18 rows to 4"/10cm over rib pat using size 11 (8mm) needles. TAKE TIME TO CHECK YOUR GAUGE.

## RIB/EYELET PATTERN

(multiple of 4 sts plus 3)

**Rows 1 and 3 (RS)** \*P3, sl 1; rep from \*, end p3.

**Row 2** K3, p1; rep from \* end k3.

**Row 4** K3, \*p1, k1, yo, k2tog; rep from \*, end p1, k3.

Rep rows 1–4 for rib/eyelet pat.

## RIB PATTERN

Rep rows 1 and 2 of rib/eyelet pat.

## BACK

Cast on 47 (55, 63, 71) sts. Work in rib/eyelet pat for 9½ (10, 10½, 11)"/24 (25.5, 27, 28)cm. Cont in rib pat until piece measures 13½ (14, 14½, 15)"/34 (35.5, 37, 38)cm from beg.

## Shape armhole

Bind off 5 (5, 6, 6) sts at beg of next 2 rows. Dec 1 st each side every other row 3 (3, 6, 6) times—31 (39, 39, 47) sts. Work even until armhole measures 5½ (6, 6½, 7)"/14 (15, 16.5, 17.5)cm.

## Shape neck

**Next row (RS)** Work 9 (11, 11, 13) sts, join 2nd ball of yarn and bind off center 13 (17, 17, 21) sts, work to end. Working both sides at once, dec 1 st at each neck edge every other row twice. Work even until armhole measures 7½ (8, 8½, 9)"/19 (20.5, 21.5, 23)cm. Bind off sts each side.

## FRONT

Work as for back until armhole measures 4 (4½, 5, 5½)"/10 (11.5, 12.5, 14)cm.

## Shape neck

**Next row (RS)** Work 11 (13, 13, 17) sts, join 2nd ball of yarn and bind off center 9 (13, 13, 17) sts, work to end. Working both sides at once, dec 1 st at each neck edge every other row 4 times. Work even until same length as back. Bind off rem sts each side.

## FINISHING

Block pieces to measurements. Sew shoulder and side seams.

## Tie

With crochet hook and 2 strands of contrasting color, ch 60"/152cm. Weave tie through top row of eyelets, beg and end at center front. ◻



## 3 crochet cloche



Bamboo



Shown in one size on page 32.

## MATERIALS

Bamboo by Alchemy Yarns of Transformation, 1½oz/50g balls, each approx 150yd/135m (bamboo)

- 1 ball in #79c rosita for cloche
- Small amounts in #33c red run and #53c forest waltz for flowers and leaves
- Size G/6 (4mm) crochet hook OR SIZE TO OBTAIN GAUGE
- Tapestry needle

## MEASUREMENTS

Circumference Approx 18"/45.5cm

## GAUGE

1 rep (5 dc, ch 5—rnd 10 of pat) to

1½"/4.5cm and 8 rnds to 4"/10cm using G/6 (4mm) hook.

TAKE TIME TO CHECK YOUR GAUGE.

## CLOCHE

Chain 5. Join with sl st to first ch to form ring. **Rnd 1** In ring work 10 sc.

**Rnd 2** Ch 2, \*dc in next st, ch 1; rep from \* around.

**Rnd 3** Ch 2, \*2 dc in next ch-1 sp, ch 1; rep from \* around.

**Rnd 4** Ch 2, \*2 dc in next ch-1 sp, ch 2; rep from \* around.

**Rnd 5** Ch 2, \*3 dc in next ch-2 sp, ch 2; rep from \* around.

**Rnd 6** Ch 2, \*3 dc in next ch-3 sp, ch 3; rep from \* around.

**Rnd 7** Ch 2, \*4 dc in next ch-3 sp, ch 3; rep from \* around.

**Rnd 8** Ch 2, \*4 dc in next ch-3 sp, ch 4; rep from \* around.

**Rnd 9** Ch 2, \*5 dc in next ch-4 sp, ch 4; rep from \* around.

**Rnd 10** Ch 2, \*5 dc in next ch-4 sp, ch 5; rep from \* around.

Rep rnd 10 for 4 more rnds. Fasten off.

## FLOWERS AND LEAVES

See page 36 for instructions on making leaves and flowers. Make 3 flowers and 3 leaves. Tack tog and sew to side of hat (see photo). ◻

## 4 sleeveless top



Grace



Sized for X-Small (Small, Medium, Large, X-Large, XX-Large). Shown in size X-Small on page 33.

## MATERIALS

Grace by Patons, 1½oz/50g balls, each approx 136yd/125m (cotton)



- 4 (4, 5, 6, 6, 7) balls in #60008 natural (MC)
- 1 ball each in #60603 apricot (A) and #60027 ginger (B)
- One pair size 8 (5mm) needles OR SIZE TO OBTAIN GAUGE
- Size G/6 (4mm) crochet hook

#### MEASUREMENTS

- **Bust** 30 (34, 38, 42, 46, 50)"/76 (86.5, 96.5, 106.5, 116.5, 127)cm
- **Length** 21 (21½, 22, 23, 23½, 24)"/53 (54.5, 56, 58.5, 60, 61)cm

#### GAUGE

20 sts and 24 rows to 4"/10cm over St st using size 8 (5mm) needles. TAKE TIME TO CHECK YOUR GAUGE.

#### NOTE

Gauge and needles size are larger than suggested for this yarn. Fabric is meant to be loose for a light and airy look and feel.

#### BACK

With 2 strands of yarn held tog and MC, cast on 75 (85, 95, 105, 115, 125) sts. Cut one strand and cont in St st with single strand until piece measures 5"/12.5 cm from beg. Dec 1 st each side on next row, then every 6th row twice more—69 (79, 89, 99, 109, 119) sts. Work even until piece measures 9½ (9½, 9½, 10, 10, 10)"/24 (24, 24, 25.5, 25.5, 25.5)cm from beg. Inc 1 st each side on next row, then every 6th row twice more—75 (85, 95, 105, 115, 125) sts. Work even until piece measures 14 (14, 14, 14½, 14½, 14½)"/35.5 (35.5, 35.5, 37, 37, 37)cm from beg.

#### Shape armhole

Bind off 4 (5, 5, 6, 6, 7) sts at beg of next 2 rows, 2 sts at beg of next 2 (4, 6, 6, 8, 10) rows. Dec 1 st each side every other row 3 (3, 4, 5, 7, 8) times. Work even on rem 57 (61, 65, 71, 73, 75) sts until armhole measures 6 (6½, 7, 7½, 8, 8½)"/15 (16.5, 18, 19, 20.5, 21.5)cm.

#### Shape neck

**Next row (RS)** Work 13 (14, 16, 19, 19, 20) sts, join 2nd ball of yarn and bind off center 31 (33, 33, 33, 35, 35) sts, work to end. Working both sides at once, bind off from each neck edge 2 sts once, 1 st once. Bind off rem 10 (11, 13, 16, 16, 17) sts each side for shoulders.

#### FRONT

Work as for back until armhole measures ½ (1, 1½, 1½, 2)"/1.5 (2.5, 2.5, 4, 4, 5)cm.

#### Shape neck

Cont armhole shaping, bind off center st and working both sides at once, dec 1 st at each neck edge (1 st in from edge) every other row 18 (19, 19, 19, 20, 20) times. Work even until same length as

back. Bind off rem 10 (11, 13, 16, 16, 17) sts each side for shoulders.

#### FINISHING

Block pieces lightly to measurements. Sew one shoulder seam.

#### Neck edging

With RS facing, pick up and k 1 st in each st and row around neck edge. Bind off knitwise. Sew 2nd shoulder seam.

#### Armhole edging

Work same as neck edging.

Sew side seams, leaving 5"/12.5cm from lower edge unsewn for side slits. Work edging around slits same as neck edging.

#### Flowers and leaves

With crochet hook and A and B, work various sizes of flowers and leaves (see page 36 for instructions) and sew to front (see photo for placement).



## 5 cropped jacket



Katrina



Sized for Small (Medium, Large, X-Large). Shown in size Medium on page 34.

#### MATERIALS

Katrina by Patons, 3½oz/100g balls, each approx 163yd/149m (rayon/polyester)

- 7 (7, 8, 9) balls #10005 ice (MC)
- 1 ball each #10732 blossom (A) and #10205 glacier (B)
- One pair each sizes 8 and 9 (5 and 5.5mm) needles OR SIZE TO OBTAIN GAUGE
- Size 7 (4.5mm) crochet hook
- 1½"/4cm-long sew-on barpin
- White, pink and green sewing threads (for flower pin)

#### MEASUREMENTS

- **Bust (closed)** 37 (39, 42½, 45)"/94 (99, 106, 114.5)cm
- **Length** 17½ (18½, 19½, 20½)"/44.5 (47, 49.5, 52)cm
- **Upper arm** 11½ (12½, 13½, 14½)"/29 (31.5, 34, 37)cm

#### GAUGE

18 sts and 28 rows to 4"/10cm over St st using size 8 (5mm) needles.

TAKE TIME TO CHECK YOUR GAUGE.

#### BACK

With larger needles and MC, cast on 84 (88, 96, 102) sts. Change to smaller needles and work in k1, p1 rib for 2 rows. Cont in St st and work even until piece measures 9 (9½, 10, 10½)"/23 (24, 25.5, 26.5)cm from beg, end with a WS row.

#### Shape armholes

**Dec row (RS)** K2, k2tog, k to last 4 sts, ssk, k2. Rep dec row every other row 6 (7, 8, 8) times more, then every 4th row 6 times—58 (60, 66, 72) sts. Work even until armhole measures 7 (7½, 8, 8½)"/17.5 (19, 20.5, 21.5)cm, end with a WS row.

#### Shape neck and shoulders

**Next row (RS)** K 13 (14, 16, 19) sts, join another ball of MC and bind off center 32 (32, 34, 34) sts for back neck, k to end. Working both sides at once, bind off 2 sts from each neck edge once, then dec 1 st every row 3 times; AT THE SAME TIME, when armhole measures 7½ (8, 8½, 9)"/19 (20.5, 21.5, 23)cm, end with a WS row. Bind off from each shoulder edge 2 (3, 3, 4) sts once, then 3 (3, 4, 5) sts twice.

#### LEFT FRONT

With larger needles and MC, cast on 54 (56, 62, 66) sts. Change to smaller needles and work in k1, p1 rib for 2 rows.

#### Beg front band

**Next row (RS)** K 48 (50, 56, 60) sts, [p1, k1] 3 times.

**Next row** [P1, k1] 3 times, p 48 (50, 56,



60) sts. Cont to work as established with 6 sts at front edge in rib and rem sts in St st until piece measures 7 (7½, 8, 8½)"/17.5 (19, 20.5, 21.5)cm from beg, end with a WS row.

**Next (dec) row** K 17 (18, 19, 21) sts, [k2tog] 10 (10, 12, 12) times, k 11 (12, 13, 15) sts, [p1, k1] 3 times—44 (46, 50, 54) sts. Cont to work as established until piece measures same as back to armhole, shape armhole at side edge only as for back, AT THE SAME TIME, when armhole measures 4 (4½, 5, 5½)"/10 (11.5, 12.5, 14)cm, end with a RS row.

#### Shape neck and shoulder

**Next row (WS)** Bind off 8 (9, 9, 10) sts, work to end. Cont to bind off 3 sts from neck edge twice, then 2 sts twice.

**Dec row (RS)** Work to last 3 sts, ssk, k1. Rep dec row every other row 4 times more. Work even until same length as back to shoulder. Shape shoulder at side edge as for back.

#### RIGHT FRONT

With larger needle and MC, cast on 54 (56, 62, 66) sts. Change to smaller needles and work in k1, p1 rib for 2 rows.

#### Beg front band

**Next row (RS)** [P1, k1] 3 times, k 48 (50, 56, 60) sts.

**Next row** P 48 (50, 56, 60) sts, [p1, k1] 3 times. Cont to work as established with 6 sts at front edge in rib and rem sts in St st until piece measures 7 (7½, 8, 8½)"/17.5 (19, 20.5, 21.5)cm from beg, end with a WS row.

**Next (dec) row** [P1, k1] 3 times, k 11 (12, 13, 15) sts, [k2tog] 10 (10, 12, 12) times, k 17 (18, 19, 21) sts—44 (46, 50, 54) sts. Cont to work as established until piece measures same as back to armhole, shape armhole at side edge only as for back. AT THE SAME TIME, when armhole measures 4 (4½, 5, 5½)"/10 (11.5, 12.5, 14)cm, end with a WS row.

#### Shape neck and shoulder

**Next row (RS)** Bind off 8 (9, 9, 10) sts, work to end. Cont to bind off 3 sts from neck edge twice, then 2 sts twice.

**Dec row (RS)** K1, k2tog, work to end. Rep dec row every other row 4 times more. Work until same length as back to shoulder. Shape shoulder at side edge as for back.

#### SLEEVES

With larger needle and A, cast on 52 (56, 60, 66) sts. Change to smaller needles and MC. Work in k1, p1 rib for 2 rows. Cont in St st and work even until piece

measures 12½ (12½, 13, 13½)"/31.5 (31.5, 33, 34)cm from beg, end with a WS row.

#### Shape cap

**Dec row 1 (RS)** K1, k2tog, k to last 3 sts, ssk, k1. Purl next row. Rep last 2 rows 10 times more, then dec row 1 once—28 (32, 36, 42) sts.

**Dec row 2 (WS)** P1, p2tog tbl, p to last 3 sts, p2tog, p1. Rep dec rows 1 and 2 four times more—10 (14, 18, 24) sts. Bind off 2 (2, 3, 4) sts at beg of next 2 rows. Bind off rem 6 (10, 12, 16) sts.

#### FINISHING

Block pieces to measurements. Sew shoulder seams. Set in sleeves. Sew side and sleeve seams.

#### Neckband

With larger needle and A, cast on 118 (118, 122, 122) sts. Change to smaller needles and MC. Work in k1, p1 rib for 8 rows. Bind off loosely in rib. Sew bound-off edge of neckband to neck edge.

#### FLOWER PIN

##### Small petals (make 3)

With crochet hook and MC, ch 4.

**Row 1** Sc in 2nd ch from hook and in each ch across—3 sts. Ch 1, turn.

**Row 2** Work 2 sc in first st, sc in next st, work 2 sc in last st—5 sts. Ch 1, turn.

**Row 3** Work 2 sc in first st, sc in next 3 sts, work 2 sc in last st—7 sts. Ch 1, turn.

**Row 4** Sc in each st across. Ch 1, turn.

**Row 5** Sc in first st, skip next st, sc in next 3 sts, skip next st, sc in last st—5 sts. Ch 1, turn.

**Row 6** Sc in first st, skip next st, sc in next st, skip next st, sc in last st—3 sts. Fasten off.

##### Medium petals (make 3)

With crochet hook and A, ch 5.

**Row 1** Sc in 2nd ch from hook and in each ch across—4 sts. Ch 1, turn.

**Row 2** Work 2 sc in first st, sc in next 2 sts, work 2 sc in last st—6 sts. Ch 1, turn.

**Row 3** Work 2 sc in first st, sc in next 4 sts, work 2 sc in last st—8 sts. Ch 1, turn.

**Rows 4 and 5** Sc in each st across. Ch 1, turn.

**Row 6** Sc in first st, skip next st, sc in next 4 sts, skip next st, sc in last st—6 sts. Ch 1, turn.

**Row 7** Sc in first st, skip next st, sc in next 2 sts, skip next st, sc in last st—4 sts. Fasten off.

##### Large petals (make 3)

With crochet hook and A, ch 7.

**Row 1** Sc in 2nd ch from hook and in each ch across—6 sts. Ch 1, turn.

**Row 2** Work 2 sc in first st, sc in next 4 sts, work 2 sc in last st—8 sts. Ch 1, turn.

**Row 3** Work 2 sc in first st, sc in next 6 sts, work 2 sc in last st—10 sts. Ch 1, turn.

**Rows 4–7** Sc in each st across. Ch 1, turn.

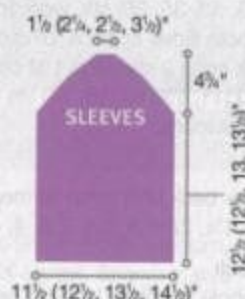
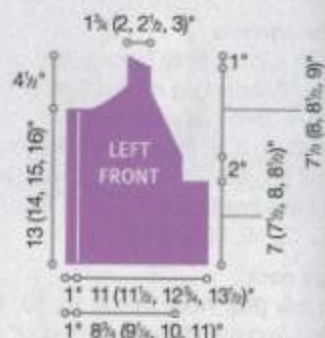
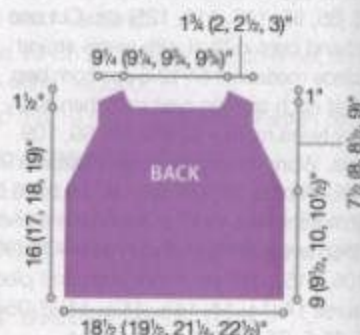
**Row 8** Sc in first st, skip next st, sc in next 6 sts, skip next st, sc in last st—8 sts. Ch 1, turn.

**Row 9** Sc in first st, skip next st, sc in next 4 sts, skip next st, sc in last st—6 sts. Fasten off.

#### Leaves (make 3)

With crochet hook and B, ch 10.

**Row 1** Sc in 2nd ch from hook and in next





8 ch, ch 1; turn to bottom loops of ch, sc in next 9 loops, ch 1, join rnd with a sl st in first st.

**Rnd 2** Ch 1, sc in first 9 sts, ch 3, sc in each st to end, ch 3, join rnd with a sl st in first st. Fasten off.

#### Stem

With crochet hook and A, ch 74.

**Row 1** Sl st in 2nd ch from hook, sl st in next 4 ch, [work (sl st, ch 3, sl st) in next ch (picot made), sl st in next 16 ch] twice, [work (sl st, ch 3, sl st) in next ch, sl st in next 10 ch] 3 times. Fasten off.

#### FINISHING

Use matching sewing threads throughout. Sew bottom edges of small petals tog, overlapping side edges slightly. Rep for medium and large petals. Place medium petals on top of large petals so medium petals are positioned between the large petals; tack tog at center. Place small petals on top of medium petals so small petals are positioned between the medium petals; sew all three layers tog at center. Sew on pin back. Fold stem so ends are uneven. Sew fold just below pin back. Sew leaves onto stem as shown. ○

## 6 sleeveless top



Handicrafter Cotton



Sized for Small (Medium, Large, X-Large). Shown in size Small on page 35.

#### MATERIALS

Handicrafter Cotton by Bernat, 1½oz/50g balls, each approx 80yd/73m (cotton)

- 6 (7, 8, 9) balls #01 white
- One pair each sizes 8 and 9 (5 and 5.5mm) needles OR SIZE TO OBTAIN GAUGE

- Two size 8 (5mm) circular needles
- Stitch markers

#### MEASUREMENTS

- **Bust** 34 (37, 40, 43)"/86.5 (94, 101.5, 109)cm
- **Length** 22 (22½, 23, 23½)"/56 (57, 58.5, 59.5)cm

#### GAUGE

13 sts to 3"/7.5cm and 24 rows to 4"/10cm over St st using smaller needles.

One rose to 2¼"/5.5cm using larger needles.

TAKE TIME TO CHECK YOUR GAUGE.

#### BORDER PATTERN I

(multiple of 2 sts plus 1)

**Row 1 (RS)** Knit.

**Rows 2 and 4** P1, \*k1, p1; rep from \* to end.

**Row 3** K1, \*p1, k1; rep from \* to end.

**Rows 5 and 6** Knit.

Work rows 1–6 for border pat I.

#### BORDER PATTERN II

(multiple of 2 sts plus 1)

**Row 1 (WS)** Knit.

**Rows 2 and 4** K1, \*p1, k1; rep from \* to end.

**Row 3** P1, \*k1, p1; rep from \* to end.

**Row 5** Knit.

Work rows 1–5 for border pat II.

#### LEAF PATTERN

(worked over 11 sts)

**Row 1 (RS)** K3, k2tog, yo, k1, yo, ssk, k3.

**Row 2 and all WS rows** Purl.

**Row 3** K2, k2tog, k1, yo, k1, yo, k1, ssk, k2.

**Row 5** K1, k2tog, k2, yo, k1, yo, k2, ssk, k1.

**Row 7** K2tog, k3, yo, k1, yo, k3, ssk.

**Row 9** Yo, ssk, k7, k2tog, yo.

**Row 11** K1, yo, ssk, k5, k2tog, yo, k1.

**Row 13** K2, yo, ssk, k3, k2tog, yo, k2.

**Row 15** K3, yo, ssk, k1, k2tog, yo, k3.

**Row 17** K4, yo, SK2P, yo, k4.

**Row 18** Purl.

Work rows 1–18 for leaf pat.

#### BACK

With smaller needles, cast on 75 (81, 87, 93) sts. Work rows 1–6 of border pat I. Cont in St st and work even until piece measures 3"/7.5cm from beg, end with a WS row.

#### Shape sides

**Dec row (RS)** K1, k2tog, k to last 3 sts, ssk, k1. Rep dec row every 6th row twice more—69 (75, 81, 87) sts. Work even until piece measures 10"/25.5cm from beg, end with a WS row.

**Inc row (RS)** K1, M1, k to last st, M1, k1. Rep inc row every 6th row twice more—75 (81, 87, 93) sts. Work even until piece measures 14"/35.5cm from beg, end with a WS row.

#### Shape armholes

Bind off 6 (6, 7, 7) sts at beg of next 2 rows, 3 sts at beg of next 2 rows—57 (63, 67, 73) sts.

**Dec row (RS)** K1, k2tog, k to last 3 sts, ssk, k1. Purl next row. Rep last 2 rows 2 (3, 3, 3) times more—51 (55, 59, 65) sts. Work even until armhole measures 7 (7½, 8, 8½)"/17.5 (19, 20.5, 21.5)cm, end with a WS row.

#### Shape shoulders and neck

Bind off 5 (6, 6, 8) sts at beg of next 2 rows, 5 (6, 7, 8) sts at beg of next 2 rows, AT THE SAME TIME, bind off center 25 (25, 27, 27) sts for neck, and working both sides at once, dec 1 st from each neck edge every row 3 times.

#### FRONT

Work as for back until border pat I is completed.

**Next row (RS)** K10 (12, 14, 16) sts, pm, k to end. Purl next row.

#### Beg first leaf pat

**Row 1 (RS)** K to marker, k 5, work leaf pat over next 11 sts, pm, k to end.

**Row 2** P to marker, work leaf pat over next 11 sts, p to end. Cont to work as established to row 18, dropping second marker on last row. AT THE SAME TIME, when piece measures 3"/7.5cm from beg, shape sides as for back.

#### Beg second leaf pat

**Row 1 (RS)** K to marker, k 13, work leaf pat over next 11 sts, pm, k to end.

**Row 2** P to marker, work leaf pat over next 11 sts, p to end. Cont to work as established to row 18, dropping second marker on last row.

#### Beg third leaf pat

**Row 1 (RS)** K to marker, work leaf pat over next 11 sts, pm, k to end.

**Row 2** P to marker, work leaf pat over next 11 sts, p to end. Cont to work as established to row 18, dropping both markers on last row. Cont in St st and work as for back until armhole measures 5 (5½, 6, 6½)"/12.5 (14, 15, 16.5)cm, end with a WS row.

#### Shape neck and shoulders

**Next row (RS)** K 16 (18, 19, 22) sts, join another ball of yarn and bind off center 19 (19, 21, 21) sts for front neck, k to end. Working both sides at once, bind off from each neck edge 2 sts twice, then dec 1 st



every other row twice—10 (12, 13, 16) sts each side. Work even until piece measures same length as back to shoulders, end with a WS row. Shape shoulders as for back.

## FINISHING

Block pieces to measurements. Sew shoulder seams. Locate and mark center st of bound-off sts of front neck.


## Neckband

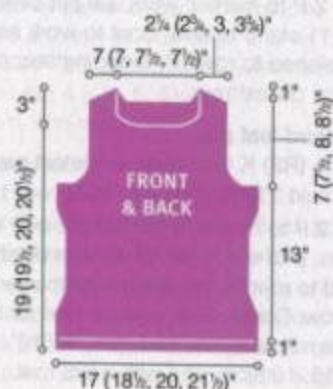
With RS facing and circular needle, pick up and k 85 (85, 89, 89) sts evenly spaced around neck edge beg at st to the left of marked center st and ending at st to the right of marked center st. Working back and forth using two circular needles, work rows 1–5 of border pat II. Bind off all sts loosely knitwise.

## Armhole bands

With RS facing and smaller needles, pick up and k 79 (83, 89, 95) sts evenly spaced along armhole edge. Work rows 1–5 of border pat II. Bind off all sts knitwise. Sew side seams.

## Roses (make 3)

With larger needles, cast on 11 sts. **Row 1** K1, [work (k1, p1) in next st] 9 times, k1—20 sts. **Row 2** Purl. **Row 3** \*K1, yo; rep from \*, end k1. **Row 4** Knit—39 sts. **Row 5** \*K 5, insert right needle under horizontal thread between 2 sts of 2 rows below and pull up a loop, place loop on LH needle then k this loop making a tight stitch; rep from \* end k4. Bind off all sts loosely knitwise. Cut yarn leaving a 10"/25.5cm tail. Roll one end around itself to form a rose, then tack layers at several points to secure. Sew on roses as shown. 



# 7 Three-quarter sleeve top



Contrasto



Sized for X-Small (Small, Medium, Large, 1X, 2X, 3X). Shown in size Small on page 38.

## MATERIALS

Contrasto by Skacel Collection, 1½oz/50g balls, each approx 77yd/70m (silk/nylon)

- 18 (20, 22, 25, 28, 31, 33) balls #03 med brown
- One pair size 13 (9 mm) needles OR SIZE TO OBTAIN GAUGE
- Size J/10 (6mm) crochet hook

## MEASUREMENTS

- **Bust** (closed) 30 (34, 38, 42, 46, 50, 54)"/76 (86.5, 96.5, 106.5, 116.5, 127, 137)cm
- **Length** 25½ (26, 26½, 27, 28, 28½, 29)"/65 (66, 67.5, 68.5, 71, 72, 73.5)cm
- **Upper arm** 11¼ (12, 13, 14, 15½, 16½, 17½)"/28.5 (30.5, 33, 35.5, 39.5, 42, 44.5)cm

## GAUGE

11 sts and 14 rows to 4"/10cm over St st using 2 strands held tog and size 13 (9mm) needles. TAKE TIME TO CHECK YOUR GAUGE.

## NOTE

Work with 2 strands of yarn held tog throughout.

## BACK

With 2 strands of yarn held tog, cast on 47 (53, 58, 64, 71, 77, 82) sts. Work in k1, p1 rib for 2 rows. Cont in St st, dec 1 st each side every 16th (16th, 16th, 16th, 12th, 12th, 12th) row 3 (3, 3, 3, 4, 4, 4) times—41 (47, 52, 58, 63, 69, 74) sts.

Work even until piece measures 17½ (17½, 17½, 18, 18, 18)"/44 (44.5, 44.5, 44.5, 45.5, 45.5, 45.5)cm from beg.

## Shape armhole

Bind off 0 (2, 2, 3, 3, 4, 5) sts at beg of next 2 rows, 0 (0, 0, 0, 2, 2, 2) sts at beg of next 0 (0, 0, 0, 2, 2, 4) rows. Dec 1 st each side every other row 2 (2, 3, 4, 3, 4, 3) times. Work even on rem 37 (39, 42, 44, 47, 49, 50) sts until armhole measures 7½ (7½, 8, 8½, 9, 9½, 10)"/18.5 (19, 20.5, 21.5, 23, 24, 25.5)cm.

## Shape shoulder

Bind off 5 (5, 6, 6, 7, 7, 7) sts at beg of next 2 rows, 5 (6, 6, 7, 7, 8, 8) sts at beg of next 2 rows. Bind off rem 17 (17, 18, 18, 19, 19, 20) sts for back neck.

## LEFT FRONT

With 2 strands of yarn held tog, cast on 39 (42, 44, 47, 51, 54, 56) sts. Work in k1, p1 rib for 2 rows. Cont in St st, slipping first st at beg of every WS rows (to keep edge even), and work dec at side edge (beg of RS rows) as for back, AT THE SAME TIME when piece measures 11 (11, 11½, 11½, 12½, 13, 13)"/28 (28, 29.5, 29.5, 32, 33, 33)cm from beg, work as foll:

## Shape neck and armhole

**Next row (RS)** Work to last 4 sts, k2tog, k2. Cont to dec 1 st at front edge every other row 23 (23, 23, 23, 24, 24, 24) times more, AT SAME TIME, when same length as back to armhole, shape armhole at side edge (beg of RS rows) as for back. Work even until same length as back to shoulder. Shape shoulder at side edge as for back.

## RIGHT FRONT

Work to correspond to left front, reversing all shaping.

## SLEEVES

With 2 strands of yarn held tog, cast on 23 (23, 24, 25, 25, 26, 26) sts. Work in k1, p1 rib for 2 rows. Cont in St st, inc 1 st each side every 10th (8th, 6th, 6th, 4th, 4th, 4th) row 4 (5, 4, 7, 5, 8, 11) times, every 0 (0, 8th, 0, 6th, 6th, 0) row 0 (0, 2, 0, 4, 2, 0) times—31 (33, 36, 39, 43, 46, 48) sts. Work even until piece measures 13 (13½, 13½, 14, 14, 14)"/33 (34.5, 34.5, 34.5, 35.5, 35.5, 35.5)cm from beg.

## Shape cap

Bind off 2 (2, 2, 3, 3, 4, 5) sts at beg of next 2 rows. **Next (dec) row (RS)** K2, SKP, work to last 4 sts, k2tog, k2. Work 1 row even. Rep last 2 rows 4 (5, 6, 6, 7, 9) times more—17 (17, 18, 19, 23, 22, 18) sts.

**For sizes Large, 1X, 2X only** Rep dec row—(17, 21, 20) sts.



for sizes 1X, 2X only—Next row (WS)  
p2tog, p to last 4 sts, p2tog tbl, p2—  
(13, 18) sts.

For size 1X only Rep dec row—(17) sts.

For all sizes Bind off 2 sts at beg of next 4  
rows. Bind off rem 9 (9, 10, 9, 9, 10, 10) sts.

## TIES

With crochet hook and 1 strand of yarn,  
chain approx 22"/56cm, or long enough to  
tie around waist at tie at left front side seam.  
Attach chain to left front neck edge just  
below neck shaping. Make a 2nd chain  
approx 8"/20.5cm long and attach to right  
front neck edge just below neck shaping.



## FINISHING

Block pieces lightly to measurements. Sew  
shoulder seams. Set in sleeves. Sew side  
seams, leaving a small opening at the left  
side seam at 11 (11, 11 1/2, 11 1/2, 12 1/2, 13,  
13 1/2)/28 (28, 29.5, 29.5, 32, 33, 33)cm from  
lower edge for tie to weave through. Sew  
sleeve seams. ○

## 8 sleeveless tunic



Chrysalis

Sized for X-Small (Small, Medium, Large, 1X,  
2X, 3X). Shown in size Small on page 41.

## MATERIALS

Chrysalis by Collette/Unique Kolours,  
3 1/2oz/100g balls, each approx 88yd/80m  
(cotton/polyamide)

- 5 (5, 6, 7, 7, 8, 9) balls #127 morocco
- One pair size 11 (8 mm) needles OR SIZE  
TO OBTAIN GAUGE

## MEASUREMENTS

- **Bust (closed)** 30 (34, 38, 42, 46, 50,  
54)"/76 (86.5, 96.5, 106.5, 116.5, 127,  
137)cm
- **Length** 30 (30 1/2, 31 1/2, 32, 33, 33 1/2,  
34)"/76 (77.5, 80, 81, 84, 85, 86.5)cm

## GAUGE

11 sts and 14 rows to 4"/10cm over St st  
using size 11 (8mm) needles. TAKE TIME  
TO CHECK YOUR GAUGE.

## BACK

Cast on 47 (53, 58, 64, 71, 77, 82) sts.  
Work in k1, p1 rib for 2 rows. Cont in St st,  
keeping first and last 2 sts in garter st (for  
side slit), until piece measures 7 (7, 7, 7,  
7 1/2, 7 1/2, 7 1/2)"/17.5 (17.5, 17.5, 19,  
19, 19)cm from beg. Cont working all sts in  
St st, dec 1 st each side every 16th (16th,  
16th, 16th, 12th, 12th, 12th) row 3 (3, 3, 3,

4, 4, 4) times—41 (47, 52, 58, 63, 69, 74)  
sts. Work even until piece measures 22 (22,  
22 1/2, 22 1/2, 23, 23, 23 1/2)"/56 (56, 57, 57,  
58.5, 58.5, 58.5)cm from beg.

## Shape armhole

Bind off 0 (2, 2, 3, 3, 4, 5) sts at beg of  
next 2 rows, 0 (0, 0, 0, 2, 2, 2) sts at beg of  
next 0 (0, 0, 0, 2, 2, 4) rows. Dec 1 st each  
side every other row 2 (2, 3, 4, 3, 4, 3)  
times. Work even on rem 37 (39, 42, 44,  
47, 49, 50) sts until armhole measures 7 1/2  
(7 1/2, 8, 8 1/2, 9, 9 1/2, 10)"/18.5 (19, 20.5,  
21.5, 23, 24, 25.5)cm.

## Shape shoulder

Bind off 5 (5, 6, 6, 7, 7, 7) sts at beg of  
next 2 rows, 5 (6, 6, 7, 7, 8, 8) sts at beg  
of next 2 rows. Bind off rem 17 (17, 18, 18,  
19, 19, 20) sts for back neck.

## LEFT FRONT

Cast on 39 (42, 44, 47, 51, 54, 56) sts.  
Work in k1, p1 rib for 2 rows. Cont in St st,  
slipping first st at beg of every WS rows (to





keep edge even), and working 2 sts at side edge in garter st (for side slit) until piece measures 7 (7, 7, 7, 7½, 7½, 7½)"/17.5 (17.5, 17.5, 17.5, 19, 19, 19)cm from beg. Cont working all sts in St st, and work dec at side edge (beg of RS rows) as for back, AT THE SAME TIME, when piece measures 15½ (15½, 16½, 16½, 17½, 18, 18)"/39 (39, 42, 42, 45, 46, 46)cm from beg, work as foll:


### Shape neck and armhole

**Next row (RS)** Work to last 4 sts, k2tog, k2. Cont to dec 1 st at front edge every other row 23 (23, 23, 23, 24, 24, 24) times more, AT SAME TIME, when same length as back to armhole, shape armhole at side edge (beg of RS rows) as for back. Work even until same length as back to shoulder. Shape shoulder at side edge as for back.

### RIGHT FRONT

Work to correspond to left front, reversing all shaping.

## FINISHING

Block pieces lightly to measurements. Sew shoulder seams. Sew side seams, leaving 7 (7, 7, 7, 7½, 7½, 7½)"/17.5 (17.5, 17.5, 17.5, 19, 19, 19)cm at lower edge of body unsewn for side slits. 

## 9 cropped top



Goa



Sized for X-Small (Small, Medium, Large, 1X, 2X, 3X). Shown in size Small on page 40.

## MATERIALS

Goa by Muench Yarns/GGH, 1 $\frac{3}{4}$ oz/50g  
balls, each approx 66yd/60m (cotton/acrylic)

- 9 (10, 11, 12, 14, 15, 17) balls #48 mauve
- One pair size 10½ (6.5 mm) needles OR  
SIZE TO OBTAIN GAUGE
- Size J/10 (6mm) crochet hook

## MEASUREMENTS

- **Bust (closed)** 30 (34, 38, 42, 46, 50, 54)"/76 (86.5, 96.5, 106.5, 116.5, 127, 137)cm
- **Length** 17½ (18, 18½, 19, 20, 20½, 21)"/44.5 (45.5, 47, 48, 51, 52, 53.5)cm
- **Upper arm** 11¼ (12, 13, 14, 15½, 16½, 17½)"/28.5 (30.5, 33, 35.5, 39.5, 42, 44.5)cm

## GALIGE

13 sts and 19 rows to 4"/10cm over St st using size 10½ (6.5mm) needles. TAKE TIME TO CHECK YOUR GAUGE.

**BACK**

Cast on 49 (55, 62, 68, 75, 81, 88) sts.  
Work in k1, p1 rib for 2 rows. Cont in St st  
until piece measures 9" (9½, 9½, 9½, 10,  
10, 10)" / 23.5 (24, 24, 24, 25.5, 25.5,  
25.5)cm from beg.

### Shape armhole

Bind off 2 (2, 3, 4, 4, 5, 6) sts at beg of next 2 rows. Dec 1 st each side every other row 1 (3, 3, 4, 6, 7, 9) times. Work even on rem 43 (45, 50, 52, 55, 57, 58) sts until armhole measures  $7\frac{1}{4}$  (7 $\frac{1}{2}$ , 8, 8 $\frac{1}{2}$ , 9, 9 $\frac{1}{2}$ , 10)\*18.5 (19, 20.5, 21.5, 23, 24, 25.5)cm.

### Shape shoulder

Bind off 6 (6, 7, 8, 8, 9, 9) sts at beg of next 2 rows, 6 (7, 8, 8, 9, 9, 9) sts at beg of next 2 rows. Bind off rem 19 (19, 20, 20, 21, 21, 22) sts for back neck.

LEFT FRONT

Cast on 42 (46, 49, 52, 55, 59, 62) sts.  
Work in k1, p1 rib for 2 rows. Cont in St st,  
slipping first st at beg of every WS rows (to  
keep edge even). **AT THE SAME TIME,**  
when piece measures 3 (3, 3½, 3½, 4½, 5,  
5)\*/7.5 (7.5, 9, 9, 12, 13, 13)cm from beg,  
work as foll:

### Shape neck and armhole

**Next row (RS)** Work to last 4 sts, k2tog, k2. Cont to dec 1 st at front edge every other row 21 (21, 21, 20, 20, 22, 21) times more, every 4th row 5 (6, 6, 7, 7, 6, 7) times, AT SAME TIME, when same length as back to armhole, shape armhole at side edge (beg of RS rows) as for back. Work even until same length as back to shoulder. Shape shoulder at side edge as for back.

## RIGHT FRONT

Work to correspond to left front, reversing all shaping.

## SLEEVES

Work in k1, p1 rib for 2 rows. Cont in St st, inc 1 st each side every 10th (10th, 8th, 6th, 6th, 6th, 4th) row 3 (8, 5, 4, 7, 14, 4) times, every 12th (0, 10th, 8th, 8th, 0, 6th) row 4

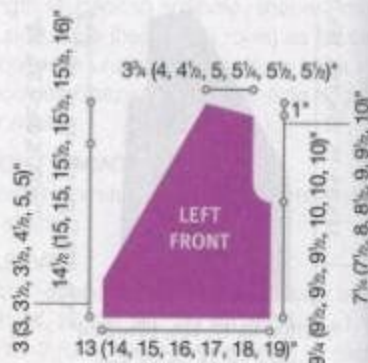
(0, 4, 7, 5, 0, 11) times—37 (39, 42, 46, 50, 54, 57) sts. Work even until piece measures 17½ (18, 18, 18, 18½, 18½, 18½)"/44.5 (45.5, 45.5, 45.5, 47, 47, 47)cm from beg.

## Shape cap

Bind off 3 (3, 3, 4, 4, 4, 4) sts at beg of next 2 rows. **Next (dec) row (RS)** K2, SK, work to last 4 sts, k2tog, k2. Work 1 row even. Rep last 2 rows 8 (9, 10, 11, 12, 14, 15) times more. Bind off 2 (2, 2, 2, 3, 3, 3) sts at beg of next 2 rows. Bind off rem 9 (9, 10, 10, 10, 10, 11) sts.

## TIES

With crochet hook and 1 strand of yarn, chain approx 22"/56cm, or long enough to fit around waist at tie at left front side seam. Attach chain to left front neck edge just below neck shaping. Make a 2nd chain





approx 8"/20.5cm long and attach to right front neck edge just below neck shaping.

## FINISHING

Block pieces lightly to measurements. Sew shoulder seams. Set in sleeves. Sew side seams, leaving a small opening at the left side seam at 3 (3, 3½, 3½, 4½, 5, 5)"/7.5 (7.5, 9, 9, 12, 13, 13)cm from lower edge for tie to weave through. Sew sleeve seams. ○

## 10 sleeveless top



Ticker Tape



Sized for X-Small (Small, Medium, Large, 1X, 2X, 3X). Shown in size Small on page 39.

## MATERIALS

Ticker Tape by Moda Dea/Coats & Clark, 1½oz/50g balls, each approx 67yd/62m (cotton)

- 6 (6, 7, 8, 9, 9, 10) balls #9256 suede
- One pair size 13 (9mm) needles OR SIZE TO OBTAIN GAUGE
- Size J/10 (6mm) crochet hook

## MEASUREMENTS

- **Bust** (closed) 30 (34, 38, 42, 46, 50, 54)"/76 (86.5, 96.5, 106.5, 116.5, 127, 137)cm
- **Length** 21½ (22, 22½, 23, 24, 24½, 25)"/54.5 (56, 57.5, 58.5, 61, 62, 63.5)cm

## GAUGE

13 sts and 18 rows to 4"/10cm over St st using size 13 (9mm) needles. TAKE TIME TO CHECK YOUR GAUGE.

## BACK

Cast on 49 (55, 62, 68, 75, 81, 88) sts. Work in k1, p1 rib for 2 rows. Cont in St st until piece measures 13½ (13½, 13½, 13½, 14, 14)"/33.5 (34.5, 34.5, 34.5, 35.5, 35.5, 35.5)cm from beg.

## Shape armhole

Bind off 2 (2, 3, 4, 4, 5, 6) sts at beg of next 2 rows. Dec 1 st each side every other row 1 (3, 3, 4, 6, 7, 9) times. Work even on rem 43 (45, 50, 52, 55, 57, 58) sts until armhole measures 7¼ (7½, 8, 8½, 9, 9½, 10)"/18.5 (19, 20.5, 21.5, 23, 24, 25.5)cm.

## Shape shoulder

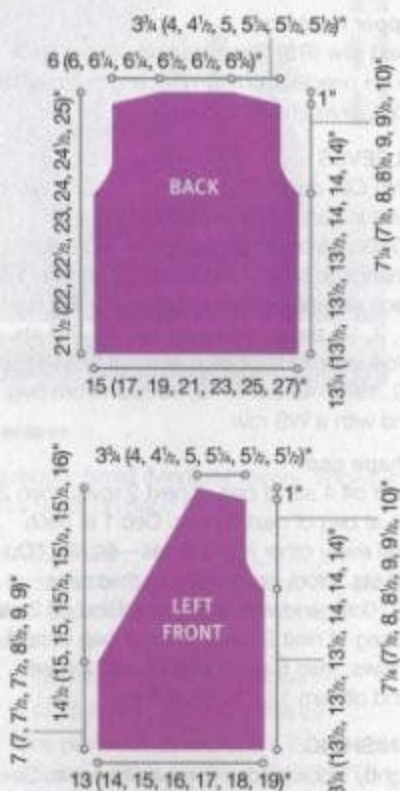
Bind off 6 (6, 7, 8, 8, 9, 9) sts at beg of next 2 rows, 6 (7, 8, 8, 9, 9, 9) sts at beg of next 2 rows. Bind off rem 19 (19, 20, 20, 21, 21, 22) sts for back neck.

## LEFT FRONT

Cast on 42 (46, 49, 52, 55, 59, 62) sts. Work in k1, p1 rib for 2 rows. Cont in St st, slipping first st at beg of every WS row (to keep edge even). AT THE SAME TIME, when piece measures 7 (7, 7½, 7½, 8½, 9, 9)"/18 (18, 19, 19, 21.5, 23, 23)cm from beg, work as foll:

## Shape neck and armhole

**Next row (RS)** Work to last 4 sts, k2tog, k2. Cont to dec 1 st at front edge every other row 23 (24, 24, 23, 23, 25, 24) times more, every 4th row 3 (3, 3, 4, 4, 3, 4) times. AT SAME TIME, when same length as back to armhole, shape armhole at side edge (beg of RS rows) as for back. Work even until same length as back to shoulder. Shape shoulder at side edge as for back.



## RIGHT FRONT

Work to correspond to left front, reversing all shaping.

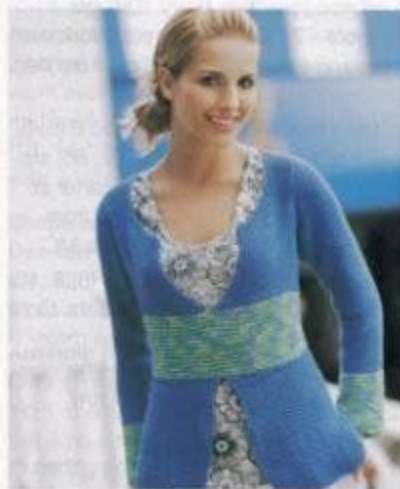
## TIES

With crochet hook and 1 strand of yarn, chain approx 22"/56cm, or long enough to fit around waist at tie at left front side seam. Attach chain to left front neck edge just below neck shaping. Make a 2nd chain approx 8"/20.5cm long and attach to right front neck edge just below neck shaping.

## FINISHING

Block pieces lightly to measurements. Sew shoulder seams. Set in sleeves. Sew side seams, leaving a small opening at the left side seam at 7 (7, 7½, 7½, 8½, 9, 9)"/18 (18, 19, 19, 21.5, 23, 23)cm from lower edge for tie to weave through. Sew sleeve seams. ○

## 11 open-necked sweater



Cotton Classic

Cotton Classic Color



Sized for X-Small (Small, Medium, Large). Shown in size X-Small on page 42

## MATERIALS

Cotton Classic by Tahki Yarns/Tahki•Stacy Charles, Inc., 1½oz/50g balls, each approx 108yd/99m (cotton)

- 8 (9, 10, 11) balls #3876 blue (MC)
- Cotton Classic Color by Tahki Yarns/Tahki•Stacy Charles, Inc., 1½oz/50g balls, each approx 108yd/99m (cotton)
- 2 (3, 3, 3) balls #105 blue green
- One pair size 7 (4.5mm) knitting needles OR SIZE TO OBTAIN GAUGE
- Stitch holder



## MEASUREMENTS

- **Bust** 30 (33, 36, 38½)"/76 (84, 91.5, 97.5)cm
- **Length** 23½ (24½, 25½, 26½)"/59.5 (62, 64.5, 67.5)cm
- **Upper arm** 12½ (13, 13½, 14½)"/31.5 (33, 34, 37)cm

## GAUGES

20 sts and 32 rows to 4"/10cm over seed st using size 7 (4.5mm) needles.

18 sts and 36 rows to 4"/10cm over garter st using size 7 (4.5mm) needles.

TAKE TIME TO CHECK YOUR GAUGES.

## SEED STITCH

**Row 1** \*K1, p1; rep from \* to end.

**Row 2** Knit the p sts and purl the k sts. Rep row 2 for seed st.

## BACK

With MC, cast on 84 (92, 100, 106) sts. Work in seed st for 10 rows. Dec 1 st each side on next row, then every 10th row 4 times more—74 (82, 90, 96) sts. Work even until piece measures 8½"/21.5cm from beg, end with a RS row.

**Next (dec) row (WS)** K across, dec 6 (6, 8, 10) sts evenly spaced—68 (76, 82, 86) sts. Change to CC and work even in garter st until piece measures 12½"/31.5cm from beg, end with a WS row. Change to MC.

**Next (inc) row (RS)** K across, inc 6 (6, 8, 10) sts evenly spaced—74 (82, 90, 96) sts. Cont in seed st and work even until piece measures 16½ (17, 17½, 18)"/42 (43, 44.5, 45.5)cm from beg, end with a WS row.

## Shape armholes

Bind off 4 sts at beg of next 2 rows, then 2 sts at beg of next 2 rows. Dec 1 st each side every other row 3 times—56 (64, 72, 78) sts. Work even until armhole measures 6½ (7, 7½, 8)"/16.5 (17.5, 19, 20.5)cm, end with a WS row.

## Shape neck and shoulders

**Next row (RS)** Work across first 20 (23, 27, 29) sts, join another ball of MC and bind off 16 (18, 18, 20) sts for back neck, work to end. Working both sides at once, bind off 5 sts each neck edge once, then 4 sts once, AT THE SAME TIME, bind off 6 (7, 9, 10) sts at each armhole edge once, then 5 (7, 9, 10) sts once.

## FRONT

### Lower left front

With MC, cast on 42 (46, 50, 53) sts. Work in seed st for 10 rows. Dec 1 st at beg of next RS row, then at same edge every 10th row 4 times more—37 (41, 45, 48) sts. Work even until piece measures 8½"/21.5cm from beg, end with a RS row.

### Lower right front

Work as for lower left front, reversing shaping, end with a RS row.

### Join lower fronts

**Next (dec) row (WS)** K across lower right front sts, dec 3 (3, 4, 5) sts evenly spaced, then k across lower left front sts dec 3 (3, 4, 5) sts evenly spaced—68 (76, 82, 86) sts. Change to CC and work even in garter st until piece measures 12½"/31.5cm from beg, end with a WS row. Change to MC.

**Next (inc) row (RS)** K across, inc 6 (6, 8, 10) sts evenly spaced—74 (82, 90, 96) sts. Cont in seed st and work 1 row even.

### Upper left front

**Next row (RS)** Work across first 37 (41, 45, 48) sts, place rem sts on holder for upper right front. Work even until piece measures same length as back to armhole, end with a WS row. Shape armhole as for back—28 (32, 36, 39) sts. Work even until armhole measures 2 (2½, 3, 3½)"/5 (6.5, 7.5, 9)cm, end with a RS row.

### Shape neck

**Next row (WS)** Bind off 8 (9, 9, 10) sts, work to end. Cont to bind off 4 sts from neck edge once, 2 sts once, then dec 1 st every other row 3 times—11 (14, 18, 20) sts. Work even until armhole measures same length as back to shoulder. Shape shoulder as for back.

### Upper right front

**Next row (RS)** Place sts from holder back to LH needle. Cont to work as for upper left front, reversing all shaping.

## SLEEVES

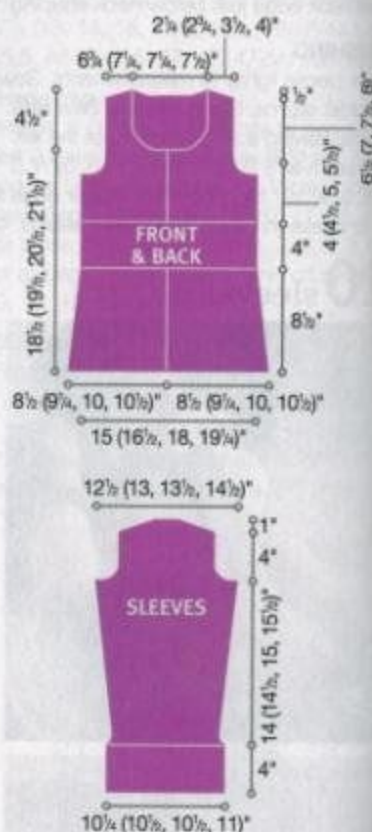
With CC, cast on 46 (48, 48, 50) sts. Work even in garter st until piece measures 4"/10cm from beg, end with a WS row. Change to MC. Cont in seed st and inc 1 st each side on next row, then every 8th row 7 (8, 9, 10) times more—62 (66, 68, 72) sts. Work even until piece measures 18 (18½, 19, 19½)"/45.5 (47, 48, 49.5)cm from beg, end with a WS row.

### Shape cap

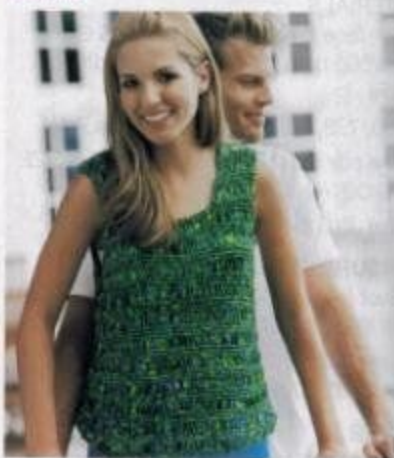
Bind off 4 sts at beg of next 2 rows, then 2 sts at beg of next 2 rows. Dec 1 st each side every other row 3 times—44 (48, 50, 54) sts. Work even until cap measures 4"/10cm, end with a WS row. Bind off 2 sts at beg of next 2 rows, 4 sts at beg of next 4 rows, then 6 sts at beg of next 2 rows. Bind off rem 12 (16, 18, 22) sts.

## FINISHING

Lightly block pieces to measurements. Sew shoulder seams. Set in sleeves. Sew side and sleeve seams. ◻



## 12 garter/drop stitch tank



Sized for Small (Medium, Large, 1X, 2X, 3X). Shown in size Small on page 43.



## MATERIALS

by Lion Brand, 1½oz/50g balls, each approx 110yd/100m (nylon)

- 6 (7, 8, 9, 10, 11) balls in #211 emerald isle
- One pair size 10 (6mm) needles OR SIZE TO OBTAIN GAUGE

## MEASUREMENTS

- Bust 34 (37, 40, 44, 48, 52)"/86.5 (94, 101.5, 111.5, 122, 132)cm
- Length 20 (20½, 21½, 23, 23½, 24½)"/50.5 (52, 55, 58.5, 60, 62.5)cm

## GAUGE

18 sts and 24 rows to 4"/10cm over pat st using size 10 (6mm) needles.

TAKE TIME TO CHECK YOUR GAUGE.

## PATTERN STITCH

Rows 1–4 Knit.

Row 5 (RS) \*K1, yo twice; rep from \*, end k1.

Row 6 Knit dropping extra yo's.

Rep rows 1–6 for pat st.

## BACK

Cast on 76 (83, 90, 99, 108, 117) sts. Work even in pat st until piece measures approx 12½ (12½, 13, 14, 14½)"/31.5 (31.5, 33, 35.5, 37)cm from beg, end with row 2 or 6.

## Shape armholes

Bind off 5 (6, 6, 7, 8, 9) sts at beg of next 2 rows. Dec 1 st each side every other row 5 (5, 6, 7, 8, 9) times—56 (61, 66, 71, 76, 81) sts. Work even until armhole measures approx 5½ (6½, 6½, 7½, 7½, 8½)"/14.5 (16, 17.5, 18.5, 20, 21)cm, end with row 2 or 6.

## Shape neck

Next row (RS) K 19 (20, 22, 24, 26, 29), on another ball of yarn and bind off center 18 (21, 22, 23, 24, 23) sts for back neck, k to end. Working both sides at once, dec 1 st at each neck edge every other row twice—17 (18, 20, 22, 24, 27) sts. Work even until armhole measures 7 (7½, 8, 8½, 9½)"/17.5 (19, 20.5, 21.5, 23, 24)cm, end with row 2 or 6.

## Shape shoulders

Cont in garter st only and bind off from each shoulder edge 6 (6, 7, 7, 8, 9) sts twice, then 5 (6, 6, 8, 8, 9) sts once.

## FRONT

Work as for back until armhole measures 5½ (4, 4½, 5, 5½, 6)"/9 (10, 11.5, 12.5, 14, 15)cm, end with row 2 or 6.

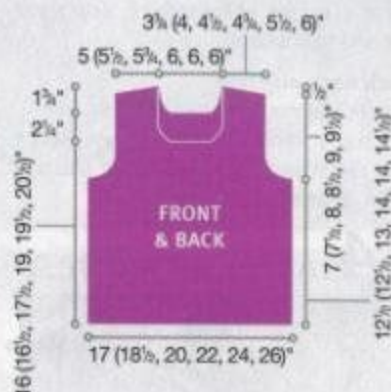
## Shape neck

Next row (RS) K 20 (21, 23, 25, 27, 30), on another ball of yarn and bind off center 16 (19, 20, 21, 22, 21) sts for back neck, k to end. Working both sides at once, dec 1 st at each neck edge every other row 3

times. Work even on 17 (18, 20, 22, 24, 27) sts each side until piece measures same length as back to shoulder. Shape shoulders as for back.

## FINISHING

Lightly block pieces to measurements. Sew shoulder and side seams. ○



# 13 nautical plunge



Sized for Small (Medium, Large). Shown in size Small on page 44.

## MATERIALS

Microspun by Lion Brand, 2½oz/70g balls, each approx 164yd/154m (microfiber acrylic)

- 2 (3, 3) balls in #109 royal blue (A)
- 2 (3, 3) balls in #100 lily white (B)
- One pair each sizes 3 and 4 (3 and 3.5mm) knitting needles OR SIZES TO OBTAIN GAUGE
- Size D/3 (3.25mm) crochet hook

## MEASUREMENTS

- Bust 32 (36, 40)"/81 (91.5, 101.5)cm
- Length 20½ (22, 23½)"/52 (56, 59.5)cm

## GAUGE

24 sts and 32 rows to 4"/10cm over St st using smaller needles.

TAKE TIME TO CHECK YOUR GAUGE.

## RIBBED BORDER

Row 1 (RS) P4, k to last 4 sts, p4.

Row 2 K4, p to last 4 sts, k4.

Row 3 Knit.

Row 4 Purl.

Rep rows 1–4 for ribbed border.

## STRIPE PATTERN

Working in St st, \*work 14 rows B, 14 rows A; rep from \* (24 rows) for stripe pat.

## BACK

With smaller needles and A, cast on 98 (106, 118) sts. Work in k2, p2 rib for 4 rows, inc 0 (2, 2) sts evenly spaced across last row—98 (108, 120) sts. Change to larger needles and St st and work even for 10 rows. Cont in stripe pat and work even until piece measures 12 (13, 14)"/30.5 (33, 35.5)cm from beg, end with a WS row.

## Shape armholes

Dec row (RS) K2, k2tog, k to last 4 sts, ssk, k2. Purl next row. Rep last 2 rows 7 times more—82 (92, 104) sts.

## Armhole bands

Cont in ribbed border, AT THE SAME TIME, inc 1 st after first 4 rib sts and 1 st before last 4 rib sts on first row, then every other row 5 (5, 3) times more, every 4th row 7 (8, 10) times—108 (120, 132) sts. Work even until armhole measures 7½ (8, 8½)"/10 (20.5, 21.5)cm, end with a WS row.

## Shape shoulders

Bind off 8 (9, 10) sts at beg of next 4 rows, then 7 (9, 11) sts at beg of next 4 rows. Bind off rem 48 sts for back neck.

## FRONT

### Lower front

Work as for back until piece measures 10 (11, 12)"/25.5 (28, 30.5)cm from beg, end with a WS row.

### Shape bodice

Bind off 12 (14, 14) sts at beg of next 2 rows, then 11 (12, 14) sts at beg of next 6 rows. Bind off rem 8 sts.

### Upper left front

With smaller needles and A, cast on 58 (62, 66) sts. Work in k2, p2 rib for 4 rows, inc 2 (2, 0) sts evenly spaced across last row—60 (64, 66) sts.



## Shape shoulder and bodice edges

**Note** Read through entire shaping instructions before you begin to knit.

Change to larger needles and St st. Work for 10 rows. **AT THE SAME TIME**, inc 1 st at beg (bodice edge) on first row and dec 1 st at end (shoulder edge) on first (5th, 5th) and 7th (0, 0) rows. Cont in stripe pat and inc 1 st at beg (bodice edge) on first row, then every 8th (10th, 12th) row 4 times more. **AT THE SAME TIME**, when 2 (0, 2) rows of stripe pat have been completed, cont to shape shoulder by dec 1 st at end of next row, then every 6th (6th, 8th) row 3 (4, 4) times more. Work until piece measures 4½ (5½, 6½)"/11.5 (14, 16.5)cm from beg, end with a WS row.

## Armhole band

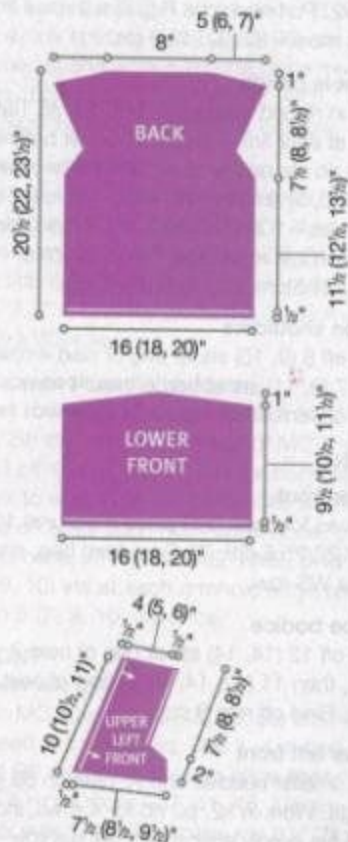
**Row 1 (RS)** K to last 40 (44, 48) sts, [p2, k2] 10 (11, 12) times.

**Row 2** [P2, k2] 10 (11, 12) times, p to end. Rep row 1 once more.

**Next row (WS)** Bind off first 42 (46, 48) sts, p to end—18 sts.

## Shape armhole

**Dec row (RS)** K to last 4 sts, ssk, k2. Purl next row. Rep last 2 rows 5 times more; piece should measure 8 (9, 10)"/20.5 (23, 25.5)cm from beg. Bind off rem 12 sts.



## Upper right front

Work as for upper left front, reversing all shaping to shape armhole—18 sts.

## Shape armhole

**Dec row (RS)** K2, k2tog, k to end. Purl next row. Rep last 2 rows 5 times more. Bind off rem 12 sts.

## FINISHING

Sew bottom edges of upper left and right fronts to bodice of lower front. Sew shoulder and side seams.

## Back neck edging

With RS facing and crochet hook, join A with a sl st in right shoulder seam. **Row 1** Ch 1, sc in each st across to left shoulder seam. Fasten off.

# 14 man's cabled vest



Organic Cotton

Sized for Man's Small (Medium, Large, X-Large). Shown in size Medium on page 45.

## MATERIALS

Organic Cotton by Blue Sky Alpacas, 3½oz/100g balls, each approx 150yd/137m (cotton)

- 3 (4, 4, 5) balls in #80 bone (A)
- 2 (3, 3, 3) balls in #81 sand (B)
- 2 (3, 3, 3) balls in #82 nut (C)
- One pair each sizes 9 and 10 (5 and 6mm) knitting needles OR SIZE TO OBTAIN GAUGE
- Size 9 (5mm) circular needle, 24"/60cm long
- Cable needle
- Stitch markers

## MEASUREMENTS

- **Chest** 42 (44, 48, 52)"/106.5 (111.5, 122, 132)cm
- **Length** 24½ (25, 26, 27)"/62 (63.5, 66, 68.5)cm

## GAUGE

15 sts and 22 rows to 4"/10cm over St st using larger needles.

TAKE TIME TO CHECK YOUR GAUGE.

## STITCH GLOSSARY

**12-st RC** Sl 6 sts to cn and hold in back, k6, k6 from cn.

**CABLE PATTERN** (worked over 18 sts)

**Row 1 (RS)** P3, k12, p3.

**Row 2 and all WS rows** K3, p12, k3.

**Rows 3, 5, 7 and 9** Rep row 1.

**Row 11** P3, 12-st RC, p3.

**Rows 13 and 15** Rep row 1.

**Row 17** Rep row 11.

**Row 18** Rep row 2.

Rep rows 1–18 for cable pat.

## STRIPE PATTERN

Working in St st, \*work 6 rows B, 6 rows C, 6 rows A; rep from \* (18 rows) for stripe pat.

## BACK

With larger needles and A, cast on 86 (86, 94, 102) sts.

## Beg pat st 1

**Row 1 (RS)** K2, [p2, k2] 8 (8, 9, 10) times, pm, work row 1 of cable pat over center 18 sts, pm, [k2, p2] 8 (8, 9, 10) times, k2.

**Row 2** P2, [k2, p2] 8 (8, 9, 10) times, sl marker, work row 2 of cable pat over center 18 sts, sl marker, [p2, k2] 8 (8, 9, 10) times, p2. Cont to work as established for 16 more rows. Change to B.

## Beg stripe pattern

**Row 1 (RS)** K to first marker inc 0 (2, 2, 2) sts evenly spaced, sl marker, work row 1 of cable pat over center 18 sts, sl marker, k to end inc 0 (2, 2, 2) sts evenly spaced—86 (90, 98, 106) sts.

**Row 2** P 34 (36, 40, 44), sl marker, work row 2 of cable pat over center 18 sts, sl marker, p 34 (36, 40, 44). Cont to work as established in stripe pat with sts each side of cable pat in St st. Work even until piece measures 15 (15, 15½, 16)"/38 (38, 39.5, 40.5)cm from beg, end with a WS row.

## Shape armholes

Bind off 6 (6, 7, 8) sts at beg of next 2 rows, then 2 (2, 3, 3) sts at beg of next 2 rows. Dec 1 st each side every other row 6 times—58 (62, 66, 72) sts. Work even until armhole measures 9½ (10, 10½, 11)"/24 (25.5, 26.5, 28)cm, end with a WS row.

## Shape shoulders and neck

Bind off 13 (15, 16, 18) sts at beg of next 2 rows. Bind off rem 32 (32, 34, 36) sts, dec 2 sts evenly spaced over cable.



## FRONT

Work as for back until armhole measures  $1\frac{1}{2}$  (2, 2 $\frac{1}{2}$ , 2 $\frac{3}{4}$ )\*4 (5, 6.5, 6.5)cm, end with a WS row.

## Shape v-neck

**Next row (RS)** Cont to shape armholes, work across to first marker, sl marker, p3, k6, join another ball of yarn, k6, p3, sl marker, work to end. Working both sides at once, work next row even.

**Dec row (RS)** With first ball of yarn, work to 2 sts before first marker, k2tog, sl marker, p3, k6; with 2nd ball of yarn, k6, p3, sl marker, ssk, work to end. Work next row even. Rep last 2 rows 15 (15, 16, 17) times more. Work even on 13 (15, 16, 18) sts each side until piece measures same length as back to shoulders. Bind off each side for shoulders.

## FINISHING


Lightly block pieces to measurements. Sew shoulder seams.

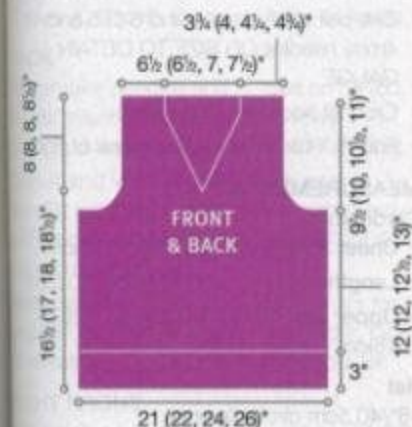
## Neck edging

With RS facing, circular needle and A, pick up and k 33 (33, 33, 35) sts evenly spaced along left neck edge, pm, 1 st at base of v-neck, pm, 33 (33, 33, 35) sts along right neck edge, then 30 (30, 32, 34) sts along back neck edge—97 (97, 99, 105) sts. Join.

**Next rnd** Bind off sts knitwise to within 2 sts of first marker, k2tog and bind off, drop marker, k1 and bind off, drop marker, ssk and bind off, then bind off all rem sts.

## Armhole bands

With RS facing, smaller needles and A, pick up and k 106 (110, 114, 118) sts evenly spaced along armhole edge. Work in k2, p2 rib for 5 rows. Bind off loosely in rib. Sew side seams to top of lower edge ribbing for side slits. 



# 15 baby shortalls & cardigan



Cotton Plus



Sized for 3 mos (6 mos, 12 mos, 18 mos). Shown in size 3 mos on page 46.

## MATERIALS

Cotton Plus by TLC/Coats & Clark, 3 $\frac{1}{2}$ oz/100g balls, each approx 186yd/170m (cotton/acrylic)

- **Shortalls** 2 (2, 2, 3) balls #3100 white (MC), 1 ball each #3706 light rose, #3707 medium rose and #3645 mint
- 2 buttons
- **Cardigan** 1 ball each #3706 light rose (A), #3645 mint (B), #3707 medium rose (C) and #3100 white (D)
- 5 (5, 6, 6) buttons
- One pair each sizes 8 and 6 (5 and 4mm) needles OR SIZE TO OBTAIN GAUGE
- Stitch holder
- Yarn needle

## GAUGE

20 sts and 28 rows to 4"/10cm over St st using larger needles.

TAKE TIME TO CHECK YOUR GAUGE.

## MEASUREMENTS

### Shortalls

- **Chest** 19 $\frac{1}{2}$  (21, 23, 24 $\frac{1}{2}$ )\*49.5 (53.5, 58.5, 62)cm
- **Length** 13 (14 $\frac{1}{2}$ , 16, 17 $\frac{1}{2}$ )\*33 (37, 40.5, 44.5)cm

### Cardigan

- **Chest** 19 (20 $\frac{1}{2}$ , 22, 24 $\frac{1}{2}$ )\*48.5 (53, 56, 63)cm
- **Length** 8 $\frac{1}{4}$  (9 $\frac{1}{2}$ , 10 $\frac{1}{2}$ , 11 $\frac{1}{4}$ )\*21 (24, 26.5, 30)cm
- **Upper arm** 8 (9, 9, 10)\*20.5 (23, 23, 25.5)cm

## Shortalls

### FRONT

#### Right leg

With MC and larger needles, cast on 23 (25, 27, 29) sts and work in St st, inc 1 st at right edge only on every 4th row 2 (2, 4, 4) times; then every other row twice (twice, 0, 0)—27 (29, 31, 33) sts. Work even until piece measures 2 (2 $\frac{1}{2}$ , 2 $\frac{3}{4}$ , 3 $\frac{1}{4}$ )\*5 (6, 7, 8)cm from beg, end with a WS row. Place all sts on a holder.

#### Left leg

Make as for right leg, reversing all shaping, end with a RS row.

#### Join legs

Cast on 1 st after last st of left leg, knit 27 (29, 31, 33) sts from holder—55 (59, 63, 67) sts. **Next row** Purl.

On next and then every other row twice more, work SK2P over center 3 sts of row—49 (53, 57, 61) sts. Work even in St st until piece measures 8 $\frac{1}{4}$  (9 $\frac{1}{2}$ , 10 $\frac{1}{2}$ , 11 $\frac{1}{4}$ )\*21 (24, 27, 30)cm from beg, end with a RS row.

#### Shape armholes

Bind off 3 sts at beg of next 2 rows; 2 sts at beg of next 2 rows, then dec 1 st at each side on every other row 4 times—31 (35, 39, 43) sts. Work even in St st until armholes measure 2 $\frac{1}{4}$  (2 $\frac{1}{2}$ , 3, 3)\*5.5 (5.5, 7.5, 7.5)cm from beg.

#### Shape neck

**Next row (RS)** K 12 (13, 14, 16), join a 2nd ball of yarn and bind off next 7 (9, 11, 11) sts, k to end. Working both sides at once, bind off 2 sts at each neck edge twice, then 1 st every other row 2 (2, 2, 3) times—6 (7, 8, 9) sts for each shoulder. Work even until armhole measures 4 $\frac{1}{2}$  (4 $\frac{3}{4}$ , 5 $\frac{1}{4}$ , 5 $\frac{3}{4}$ )\*11 (12, 13, 14) cm. Bind off.

## BACK

Work as for front, but work even on 6 (7, 8, 9) shoulder sts until armhole measures 5 $\frac{1}{4}$  (5 $\frac{1}{2}$ , 6, 6 $\frac{1}{4}$ )\*13 (14, 15, 16)cm. Bind off.

## FINISHING

### Neck edging

With smaller needles, MC and RS facing, pick up and knit 42 (46, 50, 54) sts along front neck edge. **Next row (WS)** Bind off knitwise. Work edging along back neck edge in same way, picking up 56 (60, 64, 68) sts. Sew the side and crotch seams.

### Armhole edging

Work edging along each armhole in same way as for neck, picking up 78 (84, 90, 96) sts. Fol chart to work 4 rows of cross-stitch embroidery with center vertical stitch.



around each leg in colors indicated; and 1 row of medium rose cross stitches with center vertical stitch in light rose around neckline (see photo). With white, sew a button loop at top center edge of each shoulder strap on back piece. Sew buttons to front straps to correspond.

#### SHORTALLS

Cross-stitch diagram



**COLOR KEY**  
 Lt rose  
 Med rose  
 Mint

12 sts

## CARDIGAN

### STRIPE PATTERN

\*4 rows A, 1 row C, 1 row B, 3 rows A, 1 row C, 4 rows B, 1 row D, 1 row A, 3 rows B, 1 row C, 1 row A, 4 rows D, 1 row B, 1 row C, 3 rows D, 1 row B, 1 row D; rep from \* for stripe pat.

### BACK

With D and larger needles, cast on 47 (51, 55, 61) sts. Work even in St st and stripe pat until piece measures  $4\frac{1}{4}$  (5, 6,  $6\frac{3}{4}$ )/11 (13, 15, 17)cm from beg, end with a WS row.

### Mark armhole

Bind off 1 st at beg of next 2 rows—45 (49, 53, 59) sts. Cont in St st and stripe pat until piece measures  $8\frac{1}{4}$  (9 $\frac{1}{2}$ , 10 $\frac{1}{2}$ , 11 $\frac{1}{4}$ )/21 (24, 27, 30)cm from beg. Bind off loosely.

### LEFT FRONT

With D and larger needles, cast on 24 (28, 28, 31) sts. Work even in St st and stripe pat until piece measures same as back to armhole, end with a WS row.

### Mark armhole

Bind off 1 st at beg of next row—23 (25, 27, 30) sts. Cont with St st and stripe pat until piece measures  $6\frac{3}{4}$  (7 $\frac{1}{2}$ , 8 $\frac{1}{2}$ , 9 $\frac{1}{2}$ )/17 (19.5, 22, 24.5)cm from beg, end with a WS row.

### Shape neck

Bind off 4 (4, 5, 6) sts at beg of next row, then 2 sts at neck edge twice; then, 1 st every other row 2 (3, 3, 3) times—13 (14, 15, 17) sts. Work even in St st and stripe pat until piece measures same as back from beg. Bind off.

### RIGHT FRONT

Work as for left front, reversing all shaping.

### SLEEVES

With D and larger needles, cast on 30 (32, 34, 36) sts. Work in St st and stripe pat, inc 1 st each side every 6th (6th, 8th, 8th) row 5 (7, 6, 7) times—40 (46, 46, 50) sts. Work even in St st and stripe pat until piece measures  $4\frac{1}{4}$  (5, 7,  $8\frac{1}{4}$ )/12 (15, 18, 21)cm from beg. Bind off.

### FINISHING

Sew sleeve seams. Set in sleeves. Sew side and sleeve seams.

### Neck edging

With D, smaller needles and RS facing, pick up and knit 52 (56, 60, 64) sts around neckline. **Next row (WS)** Bind off knitwise.

### Left front edging

With D, smaller needles and RS facing, pick up and k 32 (38, 44, 50) sts along straight edge at center. **Next row (WS)** Bind off knitwise. Work edging along right front edge in same way. With D and yarn needle, sew 5 (5, 6, 6) loops for buttons evenly spaced along right front edge. Sew buttons to left front to correspond to button loops.



## 16 baby bunny layette



Jolie

Cotton Classic



Cardigan sized for 6 (12, 18) months, shown in size 6 months; Hat & Blanket shown in one size on page 47.

### MATERIALS

Cotton Classic by Tahki Yarns/Tahki•Stacy Charles, Inc., 1 $\frac{1}{2}$ oz/50g balls, each approx 108yd/99m (cotton)

- Blanket: 4 balls #3446 pink (A), 5 balls #3001 white (B)
- Cardigan & Hat: 3 (4, 4) balls #3446 pink (A), 2 (3, 4) balls #3001 white (B)
- Jolie by Tahki Yarns/Tahki•Stacy Charles, Inc., 1oz/25g balls, each approx 108yd/100m (angora/merino wool)

- Blanket: 1 ball; Cardigan & Hat: 1 ball #5007 white (C)
- Embroidery thread blue (D)
- One pair each sizes 4 and 6 (3.5 and 4mm) needles OR SIZE TO OBTAIN GAUGE
- Crochet hook size G/6 (4mm)
- Four  $\frac{1}{2}$ "/13mm white ball shank buttons

### MEASUREMENTS

#### Cardigan

- Chest 23 (24, 25)"/58.5 (61, 63.5)cm
- Length 10 $\frac{1}{2}$  (11, 12)"/26.5 (28, 30.5)cm
- Upper arm 10 (10 $\frac{1}{2}$ , 11)"/25.5 (26.5, 28)cm

#### Hat

16"/40.5cm circumference

#### Blanket

28" x 34"/71cm x 86cm



## GAUGE

20 sts and 26 rows to 4"/10cm over St st and Cotton Classic using larger needles.

TAKE TIME TO CHECK YOUR GAUGE.

## BLANKET

**Note** Work blanket in St st with 5-st garter borders lengthwise on each side.

### STRIPE PATTERN

2 rows A, 2 rows B; repeat from \* (4 rows). With B, cast on 144 sts. Work in garter st for 8 rows. **Next row** Work 5 sts in garter st with B, work in St st and stripe pattern to last 5 sts, work 5 sts in garter st in B. Cont as established until piece measures 29 7/8"/73.5cm from beg, end with 2 rows B. Work in St st with A for 6 rows.

### Beg 18-st bunny chart

On RS work 5 st garter border with B, work 20 sts A, \*work 18 sts bunny chart, work 20 sts A; rep from \* end 5 sts garter border with B. Cont as established until 18 rows of chart are complete. Work in St st with A for 10 rows. With B, work 8 rows in garter st. Bind off.

### FINISHING

**For eyes** With D, form French knot as indicated on chart.

**For tail** With C and crochet hook, chain 6, fasten off. Spiral into circle and attach as indicated on chart.

**For ear** With C and smaller needles, cast on 3 sts. Work in St st, increase 1 st each side every other row twice—7 sts. Work even until 12 rows; decrease 1 st each side every other row twice—3 sts. Cut yarn and pull through remaining sts, fasten off. Fold ear and attach as indicated on chart, leaving top and sides open.

## CARDIGAN

### STRIPE PATTERN

2 rows A, 2 rows B; repeat from \* (4 rows).

### BACK

With smaller needles and B, cast on 58 (60, 62) sts. Work in k1, p1 rib for 8 rows. Change to larger needles, and work in St st. Join A and work 2 rows, then work 2 rows B; rep from \* once. Cont with A only until piece measures 11 (11 1/2, 12)"/28 (29, 30)cm from beg.

**Next row (WS)** Bind off 17 (18, 19) sts for shoulder, p24 sts and place on holder, bind off remaining 17 (18, 19) sts for shoulder.

### RIGHT FRONT

With smaller needles and B, cast on 27 (29, 31) sts. Work as for back through stripe pattern. When complete, work 2 rows A.

### Beg 16-st bunny chart

**Next row (RS)** Work 5 sts A, join C and work 16 sts of bunny chart, work 6 sts A. Cont as established until 16 rows of chart are complete.

Continue with A only until piece measures 8 1/2 (9, 9 1/2)"/21.5 (23, 24)cm from beg.

### Shape neck

**Next row (RS)** Bind off 4 sts (neck edge), work to end. Cont to bind off from neck edge 2 sts twice, then 1 st twice—17 (18, 19) sts. Work even until piece measures same as back. Bind off on WS.

### LEFT FRONT

Work as for right front, reversing direction of bunny, chart placement, and all shaping.

### SLEEVES

With smaller needles and B, cast on 32 (34, 36) sts. Work in k1, p1 rib for 8 rows. Change to larger needles, working in St st and stripe pattern inc 4 sts evenly across the first row—36 sts.

**Inc row** Inc 1 st each side every 6 rows 7 times—50 (52, 54) sts. Work even until piece measures 8 (8 1/2, 9)"/21.5 (23, 24)cm from beg. Bind off on WS.

### FINISHING

Sew shoulder seams. Mark 5 (5 1/4, 5 1/2)"/12.5 (13.5, 14)cm down from shoulder at each armhole edge. Sew top of sleeve at armhole edge between markers. Sew side seams.

### Neckband

On RS, with smaller needles and B, pick up 62 sts evenly around neck edge. Work in k1, p1 rib for 7 rows. Bind off on WS in rib.

### Right front band

With smaller needles and B, pick up and knit 55 (68, 62) sts evenly along right front edge. Work in rib for 3 rows.

**Buttonhole row** On RS, rib 4 sts, bind off \* 2 sts in rib, rib 13 sts; repeat from \* 3 times, rib 4 sts. Rib next row, casting on 2 sts over bound off sts. Rib 2 rows more. Bind off in rib.

### Left front band

With smaller needles and B, pick up 55 (58, 62) sts evenly along left front edge. Rib for 7 rows.

Sew buttons opposite buttonholes.

For eyes, tail, ears—see blanket instructions.

## Hat

With smaller needles and B, cast on 84 sts. Work in k1, p1 rib for 7 rows. Change to larger needles, and continue on in St st. Join A and work 2 rows, work 2 rows B, then 2 rows A.

**Next row (RS)** Work 35 sts A, join C and work 14 sts bunny chart, work 35 sts in A. Cont as established until 13 row chart is

complete. Work with A only until piece measures 4"/10cm from beg.

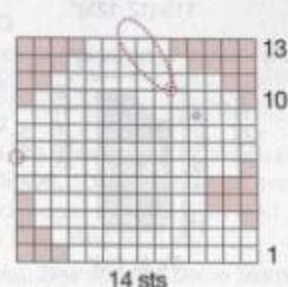
### Shape crown

**Next row (RS)** \*K10, k2tog; rep from \* to end. Purl next row. **Next row** \*K9, k2tog; rep from \* to end. Cont in this way to dec 7 sts every RS row 5 times more, end with a WS row. On RS, k2tog across row. Pull yarn through rem sts. Draw up tightly and sew back seam.

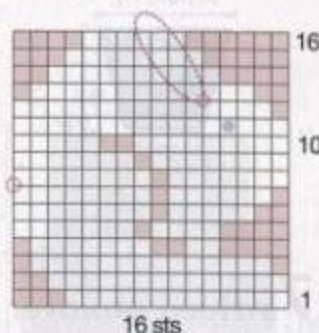
### FINISHING

**For eye** See blanket instructions.

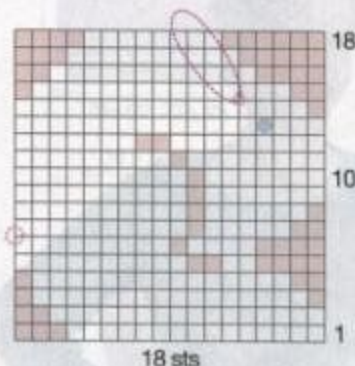
**For tail** With crochet hook and C, chain 14, fasten off. Spiral into circle and attach as indicated on chart.



14 sts



16 sts



18 sts

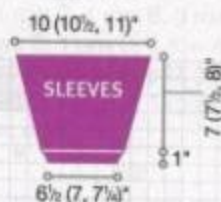
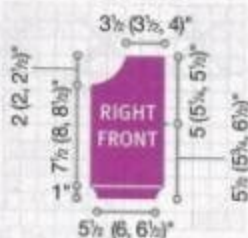
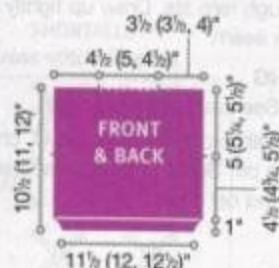
### COLOR & STITCH KEY

- Pink (A)
- White (B)
- Attach tail & ear
- Lt blue french knot (eye)
- Chain stitch ear



**For ear** With crochet hook and C, form 14 st chain; loop and stitch centers together. Attach as indicated on chart.

**For top of hat** With crochet hook and B, form 16 st chain; spiral into circle and attach to center top. ○



## 17 striped pullover



Sized for Small (Medium, Large, X-Large).  
Shown in size Small on page 48.

### MATERIALS

Olé Olé by Reynolds/JCA, 1 1/2 oz/50g balls, each approx 80yd/73m (cotton/acrylic)

- 3 (4, 4, 5) balls each #138 purple (A), #500 blue (B), #960 lt. jade (C) and #706 dk. jade (D)
- One pair each sizes 7 and 9 (4.5 and 5.5mm) needles OR SIZE TO OBTAIN GAUGE
- Stitch holders

### MEASUREMENTS

- **Bust** 37 (40, 43, 46)\*/94 (101.5, 109, 117)cm
- **Length** 21 1/2 (22 1/2, 23 1/2, 24 1/2)\*/54.5 (57, 59.5, 62)cm
- **Upper arm** 15 1/2 (16, 17, 18)\*/39.5 (40.5, 43, 45.5)cm

### GAUGE

16 sts and 24 rows to 4"/10cm over St st using larger needles.

TAKE TIME TO CHECK YOUR GAUGE.

### NOTES

- 1) When changing colors, pick up new color from under dropped color to prevent holes.
- 2) Keep all color changes on WS of work.

### STRIPE PATTERN I

Working in St st, \*work 8 rows A, 8 rows B, 8 rows C, 8 rows D; rep from \* (32 rows) for stripe pat I.

### STRIPE PATTERN II

Working in St st, \*work 8 rows D, 8 rows C, 8 rows B, 8 rows A; rep from \* (32 rows) for stripe pat II.

### STRIPE PATTERN III

Working in St st, \*work 8 rows C, 8 rows B, 8 rows A, 8 rows D; rep from \* (32 rows) for stripe pat III.

### BACK

With smaller needles and A, cast on 34 (37, 40, 43) sts, with D, cast on 34 (37, 40, 43) sts—68 (74, 80, 86) sts. Knit next 2 rows. Change to larger needles and work in St st for 6 rows.

### Beg stripe pats

**Next row (RS)** With A, work stripe pat I over first 34 (37, 40, 43) sts, with D, work stripe pat II over last 34 (37, 40, 43) sts. Cont to work stripe pats as established until piece measures 3\*/7.5cm from beg, end with a WS row.

### Shape sides

**Inc row (RS)** K2, M1, k to last 2 sts, M1, k2. Rep inc row every 12th row twice more—74 (80, 86, 92) sts. Work even until piece measures 13 (13 1/2, 14, 14 1/2)\*/33 (34, 35.5, 37)cm from beg, end with a WS row.

### Shape armholes

Bind off 3 (3, 4, 5) sts at beg of next 2 rows.

**Dec row (RS)** K2, k2tog, k to last 4 sts, sk, k2. Purl next row. Rep last 2 rows 6 (7, 7, 7) times more—54 (58, 62, 66) sts. Work even until armhole measures 7 1/2 (8, 8 1/2, 9)\*/19 (20.5, 21.5, 23)cm, end with a WS row.

### Shape shoulders

Bind off 6 (7, 7, 8) sts at beg of next 2 rows, then 6 (7, 8, 9) sts at beg of next 2 rows. Place rem 30 (30, 32, 32) sts on st holder for back neck.

### FRONT

Work as for back until armhole measures 5 1/2 (6, 6 1/2, 7)\*/14 (15, 16.5, 17.5)cm, end with a WS row.

### Shape neck

**Next row (RS)** K 17 (19, 20, 22) sts, place next 20 (20, 22, 22) sts on holder for front neck, join another ball of stripe pat II color and work to end. Working both sides at once, bind off from each neck edge, 3 sts once, then 2 sts once—12 (14, 15, 17) sts each side. Work even until piece measures same length as back to shoulder. Shape shoulders as for back.

### SLEEVES

With smaller needles and D, cast on 36 (38, 40, 42) sts. Knit next 2 rows. Change to larger needles and work in St st for 6 rows. Cont in stripe pat III, AT THE SAME TIME, inc 1 st each side on next row, then every 6th row 4 (4, 6, 9) times more, every 8th row 8 (8, 7, 5) times—62 (64, 68, 72) sts. Work even until piece measures 18\*/45.5cm from beg, end with a WS row.

### Shape cap

Bind off 3 (3, 4, 5) sts at beg of next 2 rows.

**Dec row 1 (RS)** K2, k2tog, k to last 4 sts, sk, k2. Purl next row. Rep last 2 rows 6 (7, 8, 9) times more, then dec row 1 once—40 sts.

**Dec row 2 (WS)** P2, p2tog tbl, p to last 4 sts, p2tog, p2. Rep dec rows 1 and 2 5 times more—18 sts. Bind off 2 sts at beg of next 4 rows. Bind off rem 10 sts.

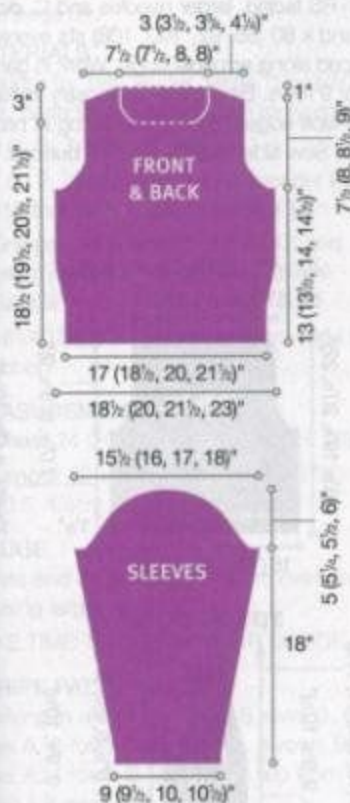
### FINISHING

Block pieces to measurements. Sew right shoulder seam.

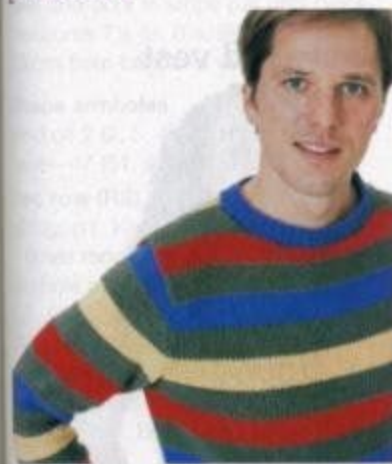
### Neck edging

With RS facing, smaller needles and B, pick up and k 15 sts along left neck edge, k 20 (20, 22, 22) sts from front neck holder, pick up and k 15 sts along right neck edge, k 30 (30, 32, 32) sts from back neck holder—80 (80, 84, 84) sts. Knit next row. Bind off all sts loosely knitwise. Sew left shoulder and neck edging seam. Set in sleeves. Sew side and sleeve seams. ○





## 18 man's striped pullover



Lion Cotton



Sized for Man's Small (Medium, Large, X-Large, XX-Large). Shown in size Small on page 49.

### MATERIALS

Lion Cotton by Lion Brand, 5oz/142 gram balls, each approx 236yd/215m (cotton)

- 3 (3, 4, 4, 4) skeins in #181 sage (A)
- 2 (2, 3, 3, 3) skeins in #108 morning glory blue (B).
- 1 skein each in #186 maize (C) and #112 poppy red (D)
- One pair each sizes 6 and 7 (4 and 5 mm) needles OR SIZE TO OBTAIN GAUGE
- Size 6 (4mm) circular needle, 16"/40cm long

### MEASUREMENTS

- **Chest** 41 (44, 47, 50, 53)"/104 (111.5, 119.5, 127, 134.5)cm
- **Length** 26 1/2 (27, 27, 27 1/2, 28)"/67.5 (68.5, 68.5, 70, 71)cm
- **Upper arm** 16 (17, 17 1/2, 18, 19)"/40.5 (43, 44.5, 45.5, 48)cm

### GAUGE

16 sts and 24 rows to 4"/10cm over St st using larger needles. TAKE TIME TO CHECK YOUR GAUGE.

### STRIPE PATTERN

\*10 rows each A, D, A, C, A, B; rep from \* (60 rows) for stripe pat.

### BACK

With smaller needles and B, cast on 82 (88, 94, 100, 106) sts. Work in k1, p1 rib for 2"/5cm. Change to larger needles and work in St st and stripe pat until piece measures 16 1/2" (88 rows above rib) from beg, end with 8 rows A.

### Shape armhole

Bind off 3 (3, 4, 4, 4) sts at beg of next 2 rows, 2 sts at beg of next 4 (4, 4, 4, 6) rows, dec 1 st each side every other row 2 (3, 3, 4, 3) times—64 (68, 72, 76, 80) sts. Work even until armhole measures 9 (9 1/2, 9 1/2, 10, 10 1/2)"/23 (24, 24, 25.5, 26.5)cm.

### Shape shoulder and neck

Bind off 5 (6, 6, 7, 7) sts at beg of next 4 rows, 6 (6, 7, 7, 8) sts at beg of next 2 rows, AT SAME TIME, bind off center 24 (24, 26, 26, 28) sts for neck and working both sides at once, bind off from each neck edge 4 sts once.

### FRONT

Work as for back until armhole measures 7 (7 1/2, 7 1/2, 8, 8 1/2)"/18 (19, 19, 20.5, 21.5)cm.

### Shape neck and shoulder

**Next row (RS)** Work 24 (26, 27, 29, 30) sts, join 2nd ball of yarn and bind off center 16 (16, 18, 18, 20) sts, work to end. Working both sides at once, bind off from each neck edge 3 sts once, 2 sts once, dec 1 st every other row 3 times, AT SAME TIME, when same length as back to shoulder, shape shoulder as for back.

### SLEEVES

With smaller needles and B, cast on 38 (40, 40, 40, 42) sts. Work in k1, p1 rib for 2"/5cm. Change to larger needles and work in St st and stripe pat (beg with 10 rows A, then 10 rows B), and inc 1 st each side every 6th row 2 (6, 10, 14, 17) times, every 8th row 11 (8, 5, 2, 0) times—64 (68, 70, 72, 76) sts. Work even until piece measures 20"/50.5cm from beg, end with 8 rows A (same stripe row as back).

### Shape cap

Bind off 3 (3, 4, 4, 4) sts at beg of next 2 rows, 2 sts at beg of next 6 rows, dec 1 st each side every other row 8 (10, 10, 11, 13) times, bind off 4 sts at beg of next 4 rows. Bind off rem 14 sts.

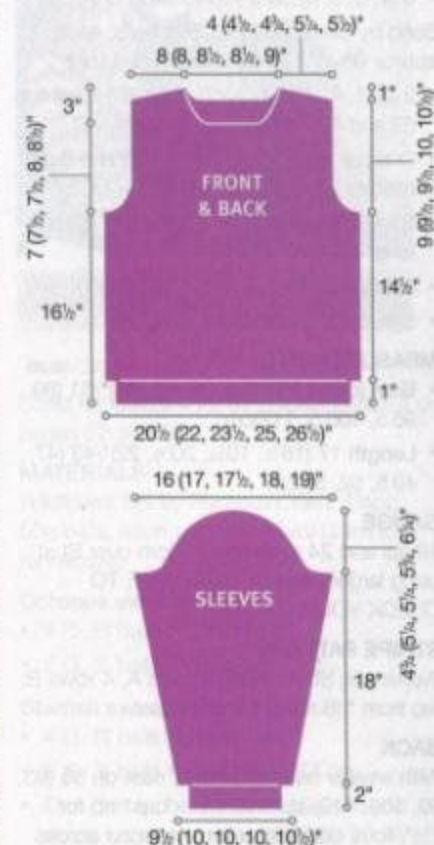
### FINISHING

Block pieces to measurements. Sew shoulder seams.

### Neckband

With RS facing, circular needle and B, pick up and k 96 (96, 100, 100, 104) sts evenly around neck edge. Join and work in k1, p1 rib for 1 1/2"/2.5cm. Bind off in rib.

Set in sleeves. Sew side and sleeve seams.





# 19 striped cardigan-vest



Sized for X-Small (Small, Medium, Large, X-Large). Shown in size X-Small on page 50.

## MATERIALS

**Boho Colors** by Berroco, 1½oz/50g balls, each approx 98yd/90m (nylon/cotton/rayon)

- 3 (4, 5, 5, 6) balls #9348 sangria (A)
- Boho** by Berroco, 1½oz/50g balls, each approx 98yd/90m (nylon/cotton/rayon)
- 2 (3, 3, 4, 4) balls each in #9267 absynthe (B) and #9268 pastures of plenty (C)
- One pair each sizes 8 and 10 (5 and 6mm) needles OR SIZE TO OBTAIN GAUGE
- Size 8 (5mm) circular needle, 24"/61cm long
- Stitch holders
- 5 (5, 5, 6, 6) ½"/13mm buttons

## MEASUREMENTS

- **Bust** (closed) 32 (35, 38, 42, 46)"/81 (89, 96.5, 106.5, 117)cm
- **Length** 17 (18½, 19½, 20½, 22)"/43 (47, 49.5, 52, 56)cm

## GAUGE

19 sts and 24 rows to 4"/10cm over St st using larger needles. TAKE TIME TO CHECK YOUR GAUGE.

## STRIPE PATTERN

Working in St st, \*work 4 rows A, 4 rows B; rep from \* (8 rows) for stripe pat.

## BACK

With smaller needles and C, cast on 85 (93, 99, 109, 119) sts. Work in k1, p1 rib for 1½"/4cm, dec 9 sts evenly spaced across last row and end with a WS row—76 (84, 90, 100, 110) sts. Change to larger needles and cont in stripe pat until piece measures

9 (10, 10½, 11, 12)"/23 (25.5, 26.5, 28, 30.5)cm from beg. end with a WS row.

## Shape armholes

Bind off 4 (5, 5, 6, 7) sts at beg of next 2 rows, 3 sts at beg of next 2 rows, 2 sts at beg of next 2 rows. Dec 1 st each side every other row 1 (2, 3, 4, 6) times—56 (60, 64, 70, 74) sts. Work even until armhole measures 7 (7½, 8, 8½, 9)"/17.5 (19, 20.5, 21.5, 23)cm, end with a WS row.

## Shape shoulders

Bind off 5 (5, 6, 6, 7) sts at beg of next 2 rows, then 5 (6, 6, 7, 7) sts at beg of next 4 rows. Place first 13 (13, 14, 15, 16) sts on one holder and rem 13 (13, 14, 15, 16) sts on a second holder for back neck.

## LEFT FRONT

With smaller needles and C, cast on 37 (41, 45, 49, 55) sts. Work in k1, p1 rib for 1½"/4cm, dec 4 (4, 5, 4, 5) sts evenly spaced across last row and end with a WS row—33 (37, 40, 45, 50) sts. Change to larger needles and cont in stripe pat until piece measures 7½ (8½, 9, 9½, 10½)"/19 (21.5, 23, 24, 26.5)cm from beg. end with a WS row.

## Shape neck and armholes

**Dec row (RS)** K to last 5 sts, ssk, k3. Rep dec row every 6th row 1 (1, 7, 8, 10) times more, every 8th row 6 (6, 1, 1, 0) times. AT THE SAME TIME, when piece measures same as back to armhole, shape armhole at side edge only as for back. Work even until same length as back to shoulder, shape shoulder at side edge as for back.

## FINISHING

Block pieces to measurements. Sew shoulder seams.

## Buttonband

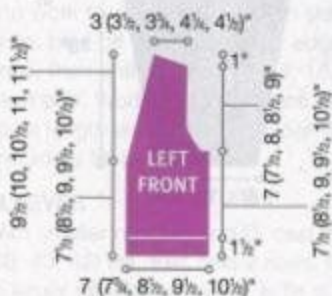
With RS facing, circular needle and C, k 13 (13, 14, 15, 16) sts from second back neck st holder, then pick up and k 78 (83, 88, 92, 99) sts evenly spaced along entire left front edge—91 (96, 102, 107, 115) sts. Work in garter st for 9 rows. Bind off all sts loosely knitwise. Place markers for 5 (5, 5, 6, 6) buttons on buttonband, with the first ¾"/2cm from lower edge, the last 1½"/2.5cm above beg of front neck shaping and the others evenly spaced between.

## Buttonhole band

With RS facing, circular needle and C, pick up and k 78 (83, 88, 92, 99) sts evenly spaced along entire right front edge, then k 13 (13, 14, 15, 16) sts from first back neck st holder—91 (96, 102, 107, 115) sts. Work in garter st for 5 rows. **Buttonhole row (RS)** \*K to marker, k2tog, yo; rep from \* 4 (4, 4, 5, 5) times more, k to end. Cont in garter st for 3 more rows. Bind off all sts loosely knitwise.

## Armhole bands

With RS facing, larger needles and C, pick up and k 80 (86, 92, 100, 108) sts evenly spaced along armhole edge. Work in garter st for 9 rows. Bind off all sts loosely knitwise. Sew side edges of front bands tog at back neck. Sew side seams. Sew on buttons.



# 20 striped vest





Sized for child's 4 (6, 8, 10). Shown in size 6 on page 51.

#### MATERIALS

Pandora by Trendsetter Yarns, 1½oz/50g balls, each approx 99yd/90m (polyamid)

- 2 (2, 3, 3) balls #7 pink (B)
- 1 (1, 2, 2) ball each in #15 lavender (A), #19 fuchsia (C) and #79 celery (D)
- One pair each sizes 7 and 8 (4.5 and 5mm) needles OR SIZE TO OBTAIN GAUGE
- 16"/40.5cm length of ⅝"/16mm wide silk ribbon

#### MEASUREMENTS

- Chest 24 (26, 28, 30)"/61 (66, 71, 76)cm
- Length 13½ (14½, 16, 17)"/34 (37.5, 40.5, 43)cm (including straps)

#### GAUGE

17 sts and 26 rows to 4"/10cm over rev St st using larger needles.

TAKE TIME TO CHECK YOUR GAUGE.

#### STRIPE PATTERN

Working in rev St st, \*work 6 rows B, 6 rows A, 6 rows C, 6 rows D, 4 rows B, 4 rows A, 4 rows C, 4 rows D; rep from \* (30 rows) for stripe pat.

#### BACK

With smaller needles and A, cast on 51 (55, 59, 63) sts. Knit next 2 rows. Change to B and work in k1, p1 rib for 1½/2.5cm, and with a WS row. Change to larger needles and cont in stripe pat until piece measures 7½ (8, 8½, 9)"/19 (20.5, 21.5, 23)cm from beg, end with a WS row.

#### Shape armholes

Bind off 2 (2, 3, 4) sts at beg of next 2 rows—47 (51, 53, 55) sts.

**Dec row (RS)** P1, p2tog, p to last 3 sts, p2tog, p1. Knit next row. Rep last 2 rows 7 times more, AT THE SAME TIME, when armhole measures 2 (2½, 3, 3½)"/5 (6.5, 7.5, 9)cm, end on WS. Change to B only. When all decs have been completed, work even on 31 (35, 37, 39) sts until armhole measures 3 (3½, 4, 4½)"/7.5 (9, 10, 11.5)cm. Bind off.

#### FRONT

Work as for back.

#### STRAPS (make 2)

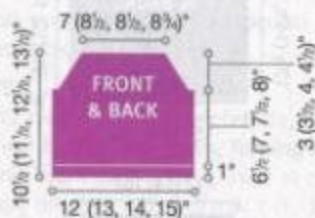
With smaller needles and B, cast on 9 sts. Work in k1, p1 rib for 6 (6½, 7, 7)"/15 (16.5, 17.5, 17.5)cm from beg. Bind off loosely in rib.

#### FINISHING

Block pieces to measurements. Sew side seams. Sew on straps.

#### FLOWERS (make 3)

With smaller needles and B (flower center), cast on 20 sts. Work in St st for 4 rows. Change to B (edging) and knit one row. Bind off loosely knitwise. Cut yarn leaving a long tail. Thread tail in tapestry needle and weave through sts. Pull tight to gather, fasten securely, then sew seam. For second flower use C for flower center and D for edging. For third flower use A for flower center and C for edging. Cut ribbon in half. Tie both lengths to left front strap just above strap seam. Trim ribbon ends at an angle. Working from the bottom up, sew flowers to left front strap with a large cross stitch in center as foll: sew first flower using C, second flower using B and third flower using D. ☉



## 21 sparkle scarf



Twinkle



Shown in one size on page 49.

#### MATERIALS

Twinkle by N.Y. Yarns, 1½oz/50g balls, each approx 92yd/83m (nylon/acrylic/polyester)

- 2 balls #25 silver gold (A)

- 2 balls #31 pinky blue (B)
- One pair size 13 (9mm) needles
- Pompon maker

#### MEASUREMENTS

Approx 78" x 6"/198cm x 15cm

#### GAUGE

Approx 12 sts and 16 row to 4"/10cm

**Note** Exact gauge is not crucial for this project.

#### SCARF

With A, cast on 20 sts. Work in St st for 10 rows. Attach B, continue in St st for 10 more rows. Continue in established striped pattern for a total of 20 stripes (ending with B). Bind off.

#### FINISHING

Make four 2"/5cm pompons in each color. Attach two of each color to each end of the scarf. ☉

## 22 octopus & starfish sweaters



Wildflower DK



Sized for child's 4 (6, 8). Shown in size 4 on pages 52 and 53.

#### MATERIALS

Wildflower DK by Plymouth Yarn, 1½oz/50g balls, each approx 136yd/124m (cotton/acrylic)

#### Octopus sweater

- 4 (5, 6) balls #57 blue (MC)
- 2 (3, 3) balls #156 green (CC)

#### Starfish sweater

- 4 (5, 6) balls #59 pink (MC)
- 2 (3, 3) balls #154 orange (CC)
- One pair each sizes 5 and 6 (3.75 and 4mm) knitting needles OR SIZE TO OBTAIN GAUGE
- Size 5 (3.75mm) circular needle, 16"/40cm long



## MEASUREMENTS

- **Chest** 30 (33, 36)\*76 (84, 91.5)cm
- **Length** (excluding rolled edge) 16 (17, 18)\*40.5 (43, 45.5)cm
- **Upper arm** 13 (14, 15)\*33 (35.5, 38)cm

## GAUGE

22 sts and 28 rows to 4"/10cm over St st using larger needles. TAKE TIME TO CHECK YOUR GAUGE.

## Stripe Pattern

Working in St st, \*work 6 rows MC, 6 rows CC; rep from \* (12 rows) for stripe pat.

## BACK

With smaller needles and CC, cast on 82 (90, 100) sts. Work in St st for 8 rows. Mark beg and end of last row for end of rolled edge. Change to larger needles and MC. Cont in St st and work even until piece measures 16 (17, 18)\*40.5 (43, 45.5)cm from marked row, end with a WS row.

## Shape shoulders

Bind off 26 (29, 33) sts at beg of next 2 rows. Place rem 30 (32, 34) sts on holder for back neck.

## FRONT

Work as for back until piece measures 13½ (14½, 15½)\*34 (37, 39.5)cm from marked row, end with a WS row.

## Shape neck

**Next row (RS)** K 33 (36, 40), place center 16 (18, 20) sts on holder for front neck, join another ball of MC, k to end. Working both sides at once, p next row.

**Dec row (RS)** With first ball of yarn, k to last 3, k2tog, k1, with 2nd ball of yarn, k1, ssk, k to end—32 (35, 39) sts each side. Purl next row. Rep last 2 rows 6 times more—26 (29, 33) sts each side. Work even until piece measures same length as back to shoulder. Bind off each side for shoulders.

## SLEEVES

With smaller needles and CC, cast on 37 (39, 41) sts. Work in St st for 8 rows. Mark beg and end of last row for end of rolled edge. Change to larger needles and cont in stripe pat, AT THE SAME TIME, inc 1 st each side on next row, then every 4th row 10 (12, 14) times more, then every 6th row 6 times—71 (77, 83) sts. Work even until piece measures 12 (13½, 14½)\*30.5 (34, 37)cm from marked row, end with a WS row. Bind off.

## FINISHING

Block pieces to measurements. (Note See charts on page 52.) Duplicate st octopus on center of front beg 40 (44, 48) rows from rolled edge and starfish beg 42 (46, 50) rows from rolled edge. Using MC,

embroider French knots eyes and stam stitch smile. Sew shoulder seams.

## Neckband

With RS facing, circular needle and CC, pick up and k74 (78, 82) sts evenly spaced around neck edge including sts on holders. Join and k 8 rnds. Bind off all sts loosely knitwise. Place markers 6½ (7, 7½)\*16.5 (17.5, 19)cm down from shoulders on back and front. Sew sleeves to armholes between markers. Sew side and sleeve seams. ○



## 23 girl's dress



Cotton Glace

Sized for girl's 8 (10, 12, 14). Shown in size 8 on page 54.

## MATERIALS

Cotton Glace by Rowan Yarns/Westminster Trading, 1½oz/50g balls, each approx 125yd/115m (cotton)

- 9 (10, 10, 11) balls in #741 red (MC)
- 1 ball in #726 white (CC)
- Size 4 (3.5mm) circular knitting needles, 20"/50cm long OR SIZE TO OBTAIN GAUGE
- Large stitch holder

## MEASUREMENTS

- **Chest** 28½ (30, 32, 33½)\*72 (76, 82, 84)cm
- **Length** 25½ (28, 29½, 30½)\*65 (71, 75, 80)cm
- **Upper arm** 9½ (9¾, 11, 11½)\*24 (25, 28, 29)cm

## GAUGE

22 sts and 28 rows to 4"/10cm over St st using size 4 (3.5mm) needles

TAKE TIME TO CHECK YOUR GAUGE

## NOTES

- 1) Dress is knit in one piece in rnds from skirt to armholes. Work is then divided for front and back with each piece being worked separately from that point on.
- 2) When working drop stitch pattern, be sure that strands from unraveled sts are on WS of work.
- 3) Be careful that picked-up CC sts do not become twisted.
- 4) See page 54 for stitch details.

## STITCH GLOSSARY

St st in rnds K every rnd.

## Drop Stitch Pattern in Rounds

(multiple of 3 sts)

**Rnd 1** With CC, purl.

**Rnds 2 and 3** With MC, knit.

**Rnd 4** \*With MC, \*k2, with RH needle and from back to front, pick up right edge of next CC st 2 rows below; drop next MC st off LH needle and unravel 2 MC rows, place CC st on LH needle and knit; rep from \* to end.

**Rnds 5 and 6** With MC, knit. Rep rows 1-6 for pat st.

## Drop Stitch Pattern in Rows

(multiple of 3 sts plus 2)

**Row 1 (WS)** With CC, knit. Move sts to opposite end of needle and pick up MC.

**Row 2 (WS)** With MC, purl. Turn.

**Row 3 (RS)** With MC, knit. Turn.

**Row 4 (WS)** With MC, \*p2, with RH needle and from back to front, pick up right edge of next CC st 2 rows below, drop next MC



st off LH needle and unravel 2 MC rows, place CC st on LH, with MC, purl the CC st; rep from \* to end. Turn.

**Row 5 (RS)** With MC, knit. Turn.

**Row 6 (WS)** With MC, purl. Turn.

**Row 7 (RS)** With CC, purl. Move sts to opposite end of needle and pick up MC.

**Row 8 (RS)** With MC, knit. Turn.

**Row 9 (WS)** With MC, purl.

**Row 10 (RS)** With MC, \*k2, with RH needle and from back to front, pick up right edge of next CC st 2 rows below, drop next MC st off LH needle and unravel 2 MC rows, place CC st on LH needle and knit; rep from \* to last 2 sts, k2. Turn.

**Row 11 (WS)** With MC, purl.

**Row 12 (RS)** With MC, knit. Rep rows 1–12 for pat st.

## SKIRT/BODICE

**Hem** With MC and circular needle, cast on 216 (228, 240, 252) sts. Join ends being careful not to twist sts. Work even for 5 rnds in St st. **Turning rnd** Purl. Work even in St st until piece measures 6" (6", 6, 5")/17 (17, 15, 14)cm from turning rnd.

**Dec rnd** \*K16 (17, 18, 19), k2tog; rep from \* around—204 (216, 228, 240) sts. Work even until piece measures 8" (9, 8", 8")/21.5 (23, 22, 22)cm from turning rnd.

**Next dec rnd** \*K15 (16, 17, 18), k2tog; rep from \* around—192 (204, 216, 228) sts. Work even until piece measures 10" (11, 11, 12")/26.5 (29, 29, 30.5)cm from turning rnd. **Next dec rnd** Dec 12 sts as before, having one less st between decs on every dec rnd. Rep dec rnd twice more having 2 (2, 2, 3")/5 (6, 7, 8)cm between each dec rnd—156 (168, 180, 192) sts. Work even until piece measures 15" (17, 17, 19")/39 (43, 45, 48)cm from turning rnd. Change to drop st pat and work even in rnds until piece measures 19" (21, 22, 24")/50 (55, 58, 62)cm from turning rnd.

## Divide for front and back

Bind off 4 sts, work in pat for 72 (78, 84, 90) sts for front, bind off 6 sts for armhole, work in pat for 72 (78, 84, 90) sts for back, bind off 2 sts. Place front sts on a stitch holder.

## Shape armholes and back neck

**Note** As you shape armholes, be sure to keep CC drop stitch sts lined up as established.

Cont in drop st pat, working back and forth in rows, bind off 2 sts at beg of next 2 rows, then dec 1 st each side every other row 2

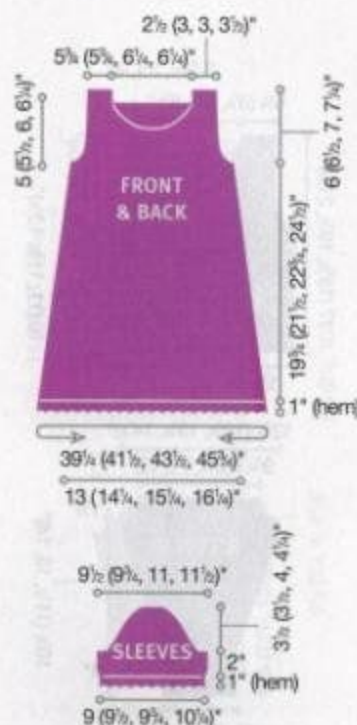
(3, 4, 5) times—64 (68, 72, 76) sts. Work even until armhole measures 5 (5½, 6, 6¼)/13 (14, 15, 16)cm, end with a WS row. Work in pat over first 18 (20, 21, 23) sts, join a 2nd ball of yarn, bind off 28 (28, 30, 30) sts for back neck, work in pat to end. Working both sides at once, work 2 rows even, then bind off 4 sts at each neck edge. Bind off rem 14 (16, 17, 19) sts for each shoulder.

## FRONT

Pick up front stitches from holder. Work as for back until armhole measures 3¼ (3½, 3½, 4)"/8 (9, 9, 10)cm, end with a WS row. Work in pat over first 26 (28, 29, 31) sts, join a 2nd ball of yarn and bind off 12 (12, 14, 14) sts for back neck, work to end. Bind off 3 sts at each neck edge twice, then 2 sts at each neck, then dec 1 st every other row 4 times—14 (16, 17, 19) sts. Work even until armhole measures same as back. Bind off.

## SLEEVES

With MC, cast on 50 (52, 54, 56) sts. **Hem** Work even in St st for 5 rows. **Turning row (WS)** Knit. Work even in St st, inc 1 st each side every 8th (8th, 4th, 3rd) row 1 (1, 3, 4) times—52 (54, 60, 64) sts. Work even until sleeve measures 2"/5cm from turning row, end with a WS row.



## Shape cap

Bind off 5 sts at beg of next 2 rows, 2 sts at beg of next 6 rows, dec 1 st each side every other row 8 (8, 9, 10) times, bind off 2 sts at beg of next 2 rows—10 (12, 16, 18) sts. Work even until cap measures 3" (3½, 4, 4¼)/9 (9, 10, 11)cm. Bind off.

## FINISHING

Sew one shoulder seam.

## Neckband

With MC and RS facing, pick up and k 102 (104, 108, 108) sts around neckline; work in St st for 4 rows; k 1 row on WS for turning row; k 5 rows in St st. Bind off. Sew rem shoulder and neck edge seam. Fold neckband in half to WS and sew in place. Set in sleeves and sew sleeve seams. Fold sleeve and lower edge hems to WS and sew in place.

# 24 child's hoodie



Cilantro



Sized for girl's 8 (10, 12, 14). Shown in size 8 on page 55.

## MATERIALS

Cilantro by Nashua Handknits, 1½ oz/50g balls, each approx 136yd/124m (cotton/acrylic)

- 10 (10, 11, 12) balls #1 white (MC)
- 1 ball #9 geranium (CC)
- One pair size 8 (5mm) needles OR SIZE TO OBTAIN GAUGE
- Yarn needle

## MEASUREMENTS

- Chest 30 (32, 33½, 34½)/76 (81.5, 85, 87.5)cm



- **Length** 17 (18½, 19½, 21½)"/43 (47, 49.5, 55)cm
- **Upper arm** 12½ (12½, 13½, 14½)"/32 (32.5, 35, 37)

#### GAUGE

18 sts and 24 rows to 4"/10cm over St st using size 8 (5mm) needles

TAKE TIME TO CHECK YOUR GAUGE.

#### BACK

With MC, cast on 68 (72, 76, 78) sts. Work in k1, p1 rib for 2 rows. **Next row (RS)** K34 (36, 38, 39); p34 (36, 38, 39). **Next row (WS)** K34 (36, 38, 39); p34 (36, 38, 39). Cont in St st on right half of piece and rev St st on left half as established until piece measures 8¼ (9, 10, 10½)"/21 (23, 25, 27) cm from beg, end with a WS row. **Next row (RS)** Switch position of St st and rev St st, working right half in rev St st and left half in St st. Cont in this way until piece measures 10 (11, 11½, 13½)"/25 (28, 30, 34)cm from beg, end with a WS row.

#### Shape armholes

Bind off 2 sts at beg of next 2 rows. **Next (dec) row (RS)** P2, p2tog, work in pat as established to last 4 sts, k2tog, k2. **Next row (WS)** Work in pat as established. Rep last 2 rows 3 times more—56 (60, 64, 66) sts. Work even until armhole measures 6¼ (6½, 7, 7½)"/16 (17, 18, 19)cm, end with a WS row.

#### Shape back neck

**Next row (RS)** P17 (19, 20, 21), join a 2nd ball of yarn and bind off 22 (22, 24, 24) sts, work to end in pat. Working both sides at once, bind off 3 sts at each neck edge—14 (16, 17, 18) sts. Work even in pat until armhole measures 7 (7½, 7¾, 8¼)"/18 (19, 20, 21)cm. Bind off.

#### FRONT

Work as for back until armhole measures 4 (4¼, 4¾, 5¼)"/10 (11, 12, 13) cm from beg, end with a WS row. **Next row (RS)** P22 (24, 25, 26), join a 2nd ball of yarn and bind off 12 (12, 14, 14) sts, k to end. Working both sides at once, bind off 3 sts at each neck edge once, 2 sts at each neck edge once, then dec 1 st at each neck edge every other row 3 times—14 (16, 17, 18) sts. Work even in pat until armhole measures same as back to shoulder. Bind off.

#### POCKET

With MC and RS facing, pick up and k68 (72, 76, 78) sts along upper edge of ribbing on front, work in St st and rev St st to match front until pocket measures 2¼ (2¾, 3¼, 3¾)"/6 (7, 8, 9)cm, end with a WS row.

#### Shape sides

**Row 1 (RS)** K2, SKP, work in pat to last 4 sts, p2tog, p2. Rep last row 15 times more, then rep row 1 on RS only (every other row) 4 times more—28 (32, 36, 38) sts. Match rem sts of pocket to front and graft pocket sts to front, or bind off rem sts and sew top edge of pocket to front.

#### LEFT SLEEVE

With MC, cast on 30 (32, 34, 36) sts. Work in k1, p1 rib for 2 rows. Work even in St st until piece measures 4"/10 cm from beg, end with a WS row. Inc 1 st each side on next row and then every 6th row 3 (6, 7, 8) times more; then every 4th row 9 (6, 6, 6) times more—56 (58, 62, 66) sts. Work even until sleeve measures 14½ (15½, 17, 18)"/37 (39, 43, 46)cm from beg.

#### Shape cap

Bind off 2 sts at beg of next 2 rows. Dec 1 st each side on next row and then every other row 3 times more—44 (46, 50, 54) sts. Bind off.

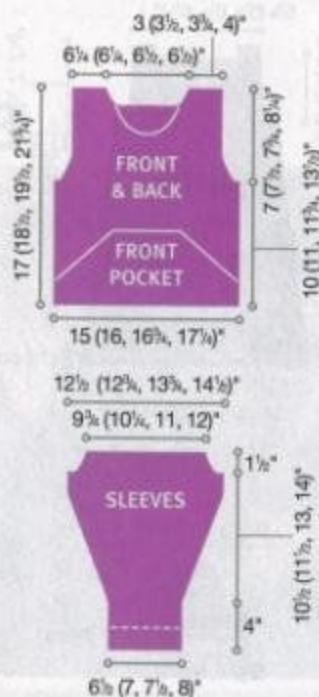
#### RIGHT SLEEVE

Work as for left sleeve, but work in rev St st.

#### HOOD

**Note** Hood is knitted from front edge to back of the neck.

With MC, cast on 94 (96, 96, 100) sts.



Work in k1, p1 rib for 2 rows. Work even in St st until piece measures 3½"/9 cm from beg, end with a WS row. Dec 1 st at each side on next row and then every other row 5 times more—82 (84, 84, 88) sts. Work even until piece measures 8½ (8¾, 9½, 9¾)"/22 (22, 24, 24)cm from beg. Bind off.

#### FINISHING

Sew shoulder seams. Sew neck edge of hood to neck (see photo). Set in sleeves. Sew the first 2"/5cm of each sleeve seam with WS tog for turning of cuff. Sew rem sleeve seams and side seams. With yarn needle and CC, embroider a vertical and a horizontal line of running sts to demarcate the 4 different sections of knitting on the front and back, weaving under and over 2 rows vertically and under and over 1 st horizontally. With CC, embroider a line of running sts under and over 1 st along upper edge of rib on each sleeve end. With CC, make a 48"/120cm long twisted cord and weave it under and over 2 sts along front edge of the hood. (See details on page 55.)

## 25 embroidered pullover



Cotton Glace

Sized for girl's 8 (10, 12, 14). Shown in size 8 on page 56.

#### MATERIALS

Cotton Glace by Rowan Yarns/Westminster Trading, 1½oz/50g balls, each approx 125yd/115m (cotton)

- 5 (5, 6, 7) balls in #726 white (MC)
- 1 ball in #741 red (CC)



- One pair size 4 (3.5 mm) needles, OR SIZE TO OBTAIN GAUGE
- Size E/4 (3.5mm) crochet hook
- Stitch holder
- Yarn needle

#### MEASUREMENTS

- **Chest** 31 (33, 35, 36½)\*/78.5 (84, 89, 92.5)cm
- **Length** 14 (15, 17, 18½)\*/36 (38, 43, 47)cm
- **Upper arm** 11½ (12½, 13, 13½)\*/29 (31, 33, 35)cm

#### GAUGE

22 sts and 42 rows to 4"/10cm over garter st using size 4 (3.5mm) needles

TAKE TIME TO CHECK YOUR GAUGE.

#### BACK

With MC, cast on 86 (90, 96, 100) sts. Work even in garter st (k every row) until piece measures 8¼ (8½, 10¼, 11½)\*/21 (22, 26, 29)cm.

#### Shape armholes

Bind off 3 (4, 5, 6) sts at beg of next 2 rows, 2 sts at beg of next 2 rows, then 1 st each side on every other row 4 times—68 (70, 74, 76) sts. Work even until armhole measures 5 (5½, 6, 6¼)\*/13 (14, 15, 16)cm.

#### Shape neck

**Next row (RS)** Work first 23 (23, 25, 25) sts, join a 2nd ball of yarn and bind off 22 (24, 24, 26) sts, work to end. Working both sides at once, bind off 4 sts at each neck edge once, then 2 sts at each neck edge once—17 (17, 19, 19) sts. Work even until armhole measures 6 (6¼, 6½, 7)\*/15 (16, 17, 18)cm. Bind off.

#### FRONT

Work as for back until armhole measures 2¼ (3¼, 3½, 4)\*/7 (8, 9, 10)cm.

#### Shape center opening and neck

**Next row (RS)** Work first 34 (35, 37, 38) sts, join a 2nd ball of yarn and work to end. Working both sides at once, work even until center opening measures 1½"/4cm. Bind off 9 (10, 10, 11) sts at each neck edge once, then 2 sts at each neck edge 4 times—17 (17, 19, 19) sts. Work even until armhole measures same as back to shoulders. Bind off.

#### SLEEVES

##### Shape vent

With MC, cast on 22 (23, 24, 25) sts. Work even in garter st until piece measures 1¼"/3cm from beg. Place sts on stitch holder. Make another piece in same way. **Next row** Work across, pick up sts from holder and knit—44 (46, 48, 50) sts.

Work even in garter st until sleeve measures 1½ (2, 2, 2½)\*/4 (5, 5, 6)cm, inc 1 st each side on next row and then every 10th row 9 (10, 11, 12) times more—64 (68, 72, 76) sts. Work even until sleeve measures 11½ (12½, 13½, 15)\*/30 (32, 34, 38)cm from beg.

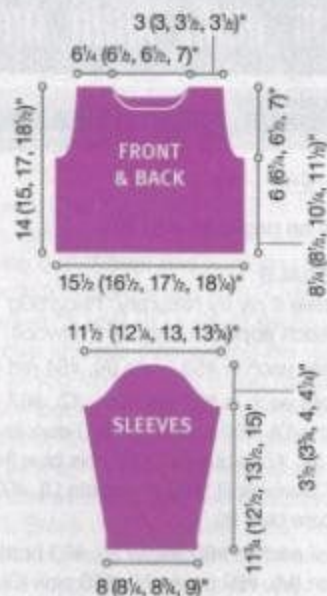
#### Shape cap

Bind off 3 (4, 5, 6) sts at beg of next 2 rows, 2 sts at beg of next 6 rows, 1 st at each side on every other row 14 (15, 16, 17) times, then bind off 2 sts at beg of next 2 rows—14 sts. If necessary, work even until cap measures 3½ (3¾, 4, 4¼)\*/9 (9.5, 10, 10.5)cm. Bind off.

#### FINISHING

Sew shoulder seams. With MC, work 1 rnd so around neckline, followed by 1 rnd sl st. Sew side and sleeve seams, leaving 1½"/3cm at lower edge of each side seam open. With yarn needle and CC, embroider a line of running stitches, weaving under and over 1 st, around neckline, lower edge and sleeve edges.

With CC, embroider a flower at each side of neck, each side of sleeve vent and each sleeve vents at lower edge of sleeve. For each flower, work four ½"/1.5cm long stitches that cross each other, then make a small cross stitch over the intersection of the first 4 stitches. (See page 56 for stitch details.)



## 26 girl's sleeveless pullover, scarf & purse



Cilantro

Sized for girl's 8 (10, 12, 14). Shown in size 8 on page 57.

#### MATERIALS

Cilantro by Nashua Handknits, 1¼oz/50g balls, each approx 136yd/124m (cotton/acrylic)

- 7 (7, 7, 8) balls #9 geranium (MC)
- 1 ball #1 white (CC)
- One pair size 8 (5mm) needles OR SIZE TO OBTAIN GAUGE
- One set (2) size 8 (5mm) dp needles
- Size G/6 (4mm) crochet hook

#### MEASUREMENTS

##### Sleeveless pullover

- **Chest** 27 (29, 31, 33)\*/68.5 (73.5, 79, 84)cm
- **Length** 15 (16, 17½, 18½)\*/38 (40.5, 44.5, 47)cm

##### Scarf

5½" x 43½"/15cm x 110.5 cm

##### Purse

7½" x 6"/19cm x 15 cm

#### GAUGE

18 sts and 24 rows to 4"/10cm over St st using size 8 (5mm) needles.

TAKE TIME TO CHECK YOUR GAUGE.

## SLEEVELESS PULLOVER

#### BACK

With MC, cast on 60 (66, 70, 74) sts. Work in St st for 10 (10½, 11½, 12)\*/25.5 (26.5, 29, 30.5) cm, end with a WS row.



### Shape armholes

Bind off 3 (3, 4, 4) sts at beg of next 2 rows, then 1 st at each side on every other row 2 (3, 3, 4) times—50 (54, 56, 58) sts. Work even in until armhole measures  $4\frac{1}{2}$  ( $4\frac{3}{4}$ ,  $5\frac{1}{4}$ ,  $5\frac{3}{4}$ )\*/11 (12, 13, 14.5)cm, end with a WS row.

### Shape neck and shoulders

**Next row (RS)** K15 (17, 17, 18), join a 2nd ball of yarn and bind off 20 (20, 22, 22) sts, work to end. Working both sides at once, bind off 4 sts at each neck edge once—11 (13, 13, 14) sts for each shoulder. Work even until armhole measures 5 ( $5\frac{1}{2}$ , 6,  $6\frac{1}{2}$ )\*/12.5 (14, 15, 16.5)cm. Bind off.

### FRONT

Work as for back until armhole measures  $2\frac{1}{2}$  (3,  $3\frac{1}{2}$ ,  $4\frac{1}{2}$ )\*/6.5 (7.5, 9, 10)cm, end with a WS row.

### Shape neck

**Next row (RS)** K21 (23, 23, 24) sts, join a 2nd ball of yarn and bind off 8 (8, 10, 10) sts, knit to end. Working both sides at once, bind off 3 sts at each neck edge twice, then 2 sts at each neck edge once, then 1 st at each neck edge on every other row twice—11 (13, 13, 14) sts for each shoulder. Work even until armhole measures same as back. Bind off.

### FINISHING

Sew shoulder and side seams. With CC and crochet hook, work 1 rnd sc around neck, armhole and lower edges. (See stitch details on page 57.)

### SCARF

With MC, cast on 24 sts. Work even in St st until piece measures  $43\frac{1}{2}$ \*/110.5 cm. Bind off.

### FINISHING

With CC and crochet hook, work 1 rnd of sc around entire outside edge of scarf, join with sl st to first st. Fasten off.

### PURSE

With MC, cast on 34 sts. Work even in St

st until piece measures  $15\frac{1}{2}$ \*/39cm. Bind off. Fold piece over, with RS out, so that  $3\frac{1}{2}$ \*/9cm overlaps the front to form a flap. Sew side seams. Fold up  $\frac{1}{4}$ \*/2 cm of flap so that WS shows and pin in place. With CC and yarn needle, work cross stitches over 2 rows and 3 sts, working through both thicknesses of the flap. Work a vertical stitch over the point where the cross stitches intersect. (See stitch details on page 57.)

### Strap

With dp needles, cast on 3 sts. **Row 1** Knit, do not turn. \*Push sts to right end of same needle and knit. Rep from \* until strap measures  $47\frac{1}{2}$ \*/120 cm from beg. Bind off. Sew strap ends to purse. ♦

## 27 calendar afghan



Perendale 8 ply



Shown on pages 58 and 59.

### MATERIALS

Perendale 8 ply by Naturally,  $1\frac{1}{2}$ oz/50g balls, each approx 110yd/101m (wool)

- 4 balls each in #53 white (A), #54 red (B)
- 2 balls each in #66 seaspray (C), #67 ebony (D), #68 cobalt (E), #70 dark lavender (F), #74 aqua (G), #75 pale blue (H), #77 lavender (I), #90 chocolate (J), #92 airforce blue (K)
- 1 ball each in #60 yellow (L), #63 bottle green (M), #69 mead (N), #76 pink (O), #82 burgundy (P), #88 orange (Q), #91 lilac (R), #93 purple (S)
- One pair size 6 (4mm) knitting needles OR SIZE TO OBTAIN GAUGE

### MEASUREMENTS

- $41\frac{1}{2}$  x  $53\frac{1}{2}$ \*/104cm x 134cm

### GAUGE

22 sts and 30 rows to  $4\frac{1}{2}$ \*/10cm over St st using size 6 (4mm) needles. TAKE TIME TO CHECK YOUR GAUGE.

### NOTES

- 1) Work charts in St st (see pages 94-99).
- 2) When changing colors, twist yarns on WS to prevent holes in work.

### AFGHAN

Cast on 60 sts for each individual chart using color indicated in the first row of chart and work in St st and chart pattern for 84 rows.

Bind off in same color as last row of chart. Block squares to measurements.

Embroider details on June and July squares.

Join squares, using photo as placement guide.

### LONG BORDER

With B, cast on 23 sts.

**Row 1 (RS)** Knit.

**Row 2** K4, p19.

**Row 3** Knit.

**Row 4** K2, p21.

**Row 5** K19 (A), k4 (B).

**Row 6** K4 (B), p19 (A).

**Row 7** K19 (A), k4 (B).

**Row 8** K2, p2 (B), p19 (A).

Rep rows 1-8 three times more.

**Row 33** K19 (E), k4 (B).

**Row 34** K4 (B), p19 (E).

**Row 35** K19 (E), k4 (B).

**Row 36** K2, p2 (B), p21 (E).

Rep rows 33-36 four times more.

**Rows 53-84** Rep rows 1-8 four times.

Rep rows 1-84 three times more.

### Corner

Using (C), work in garter st (k every row) for 45 rows. Bind off knitwise on WS.

Make second long border using (H) for corner section.

### SHORT BORDER

Work as for long border, but knit 84-row rep 3 times, using (Q) for corner section.

Make second short border using (I) for corner section.

### FINISHING

Join borders to afghan, using photo as placement guide.

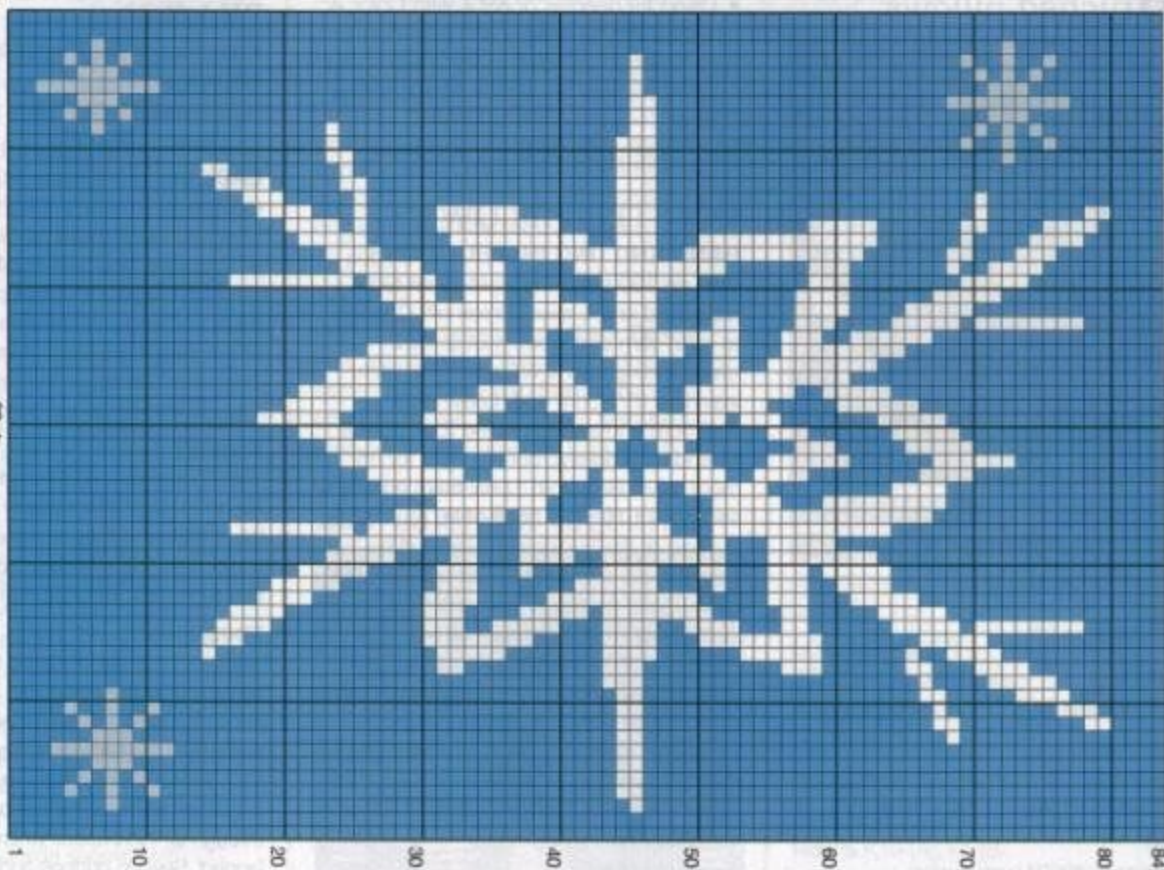
Alternately embroider 3 or 4 stars onto blue sections along borders, for a total of 51 stars (excluding the 5 July stars). ♦





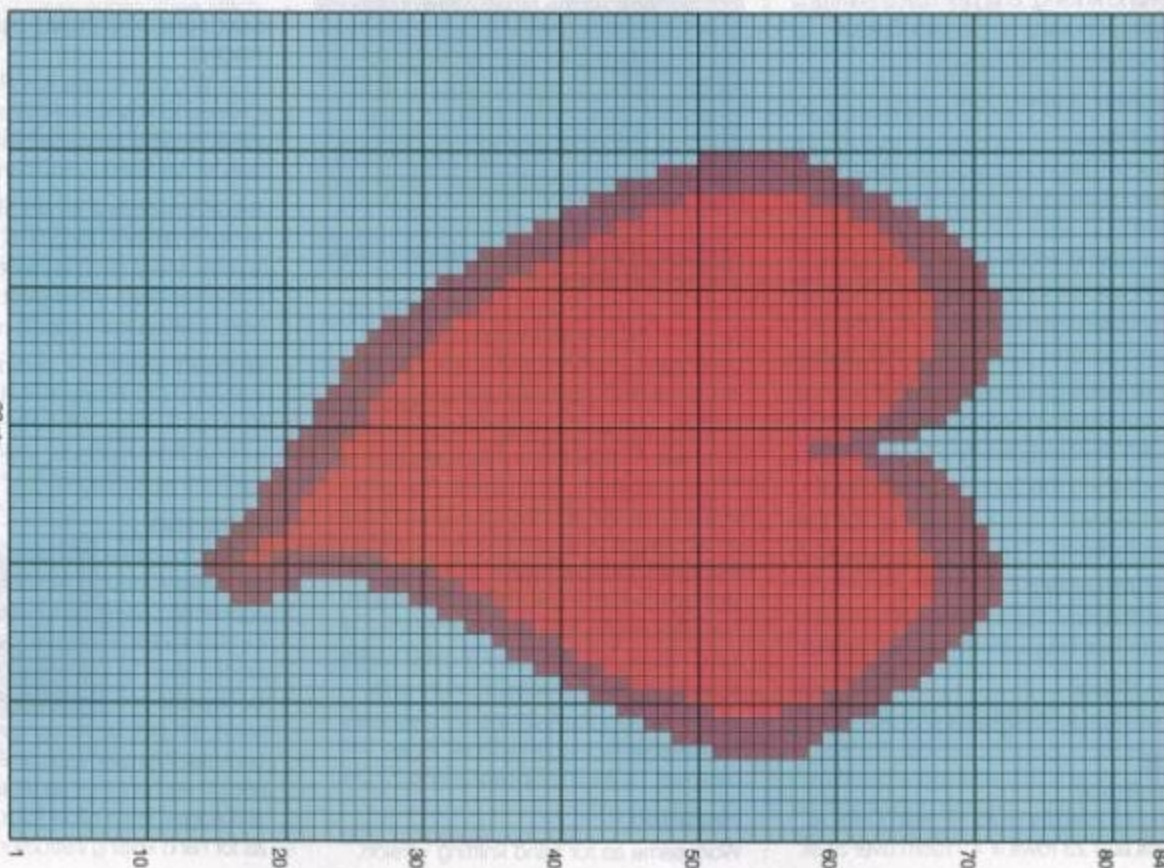
**COLOR KEY**  
 □ #53 White (A)  
 ■ #75 Pale blue (F)  
 ■ #92 Airforce blue (K)

60 sts

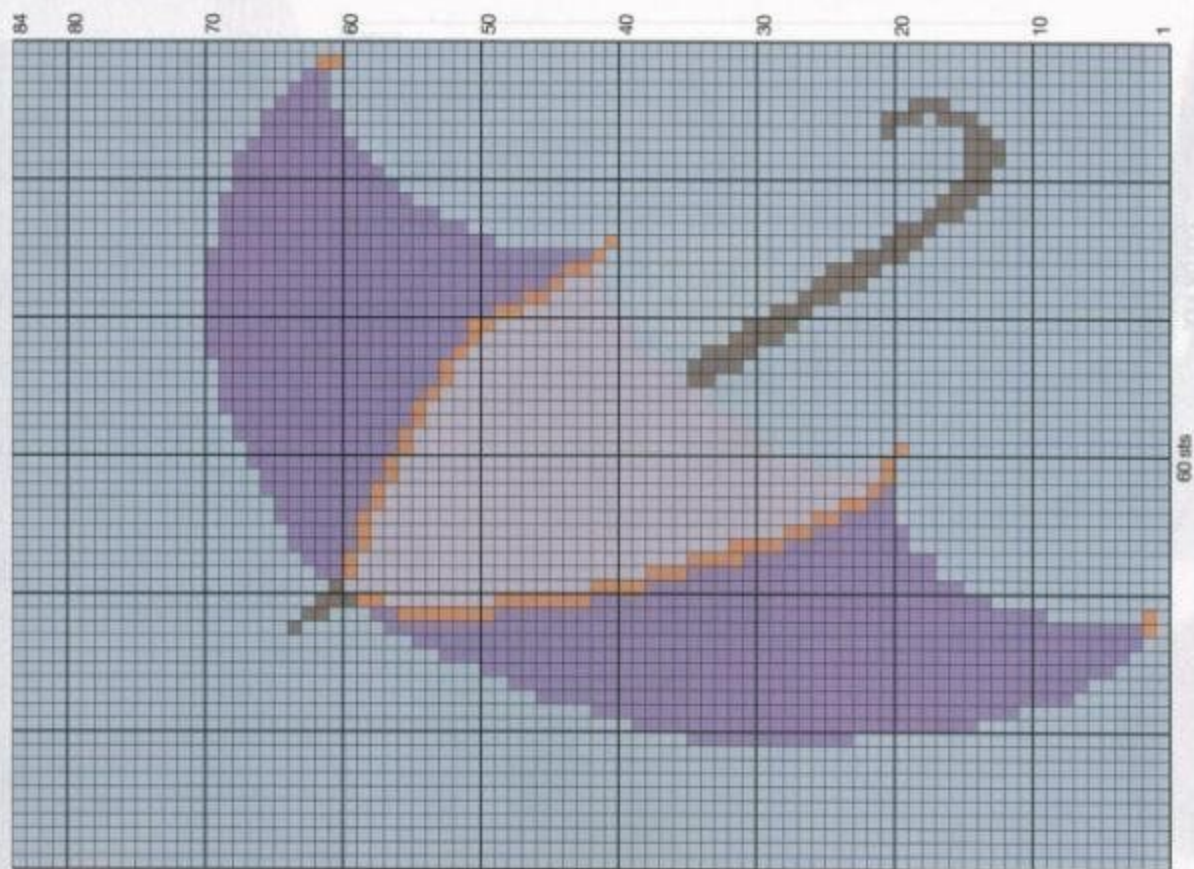
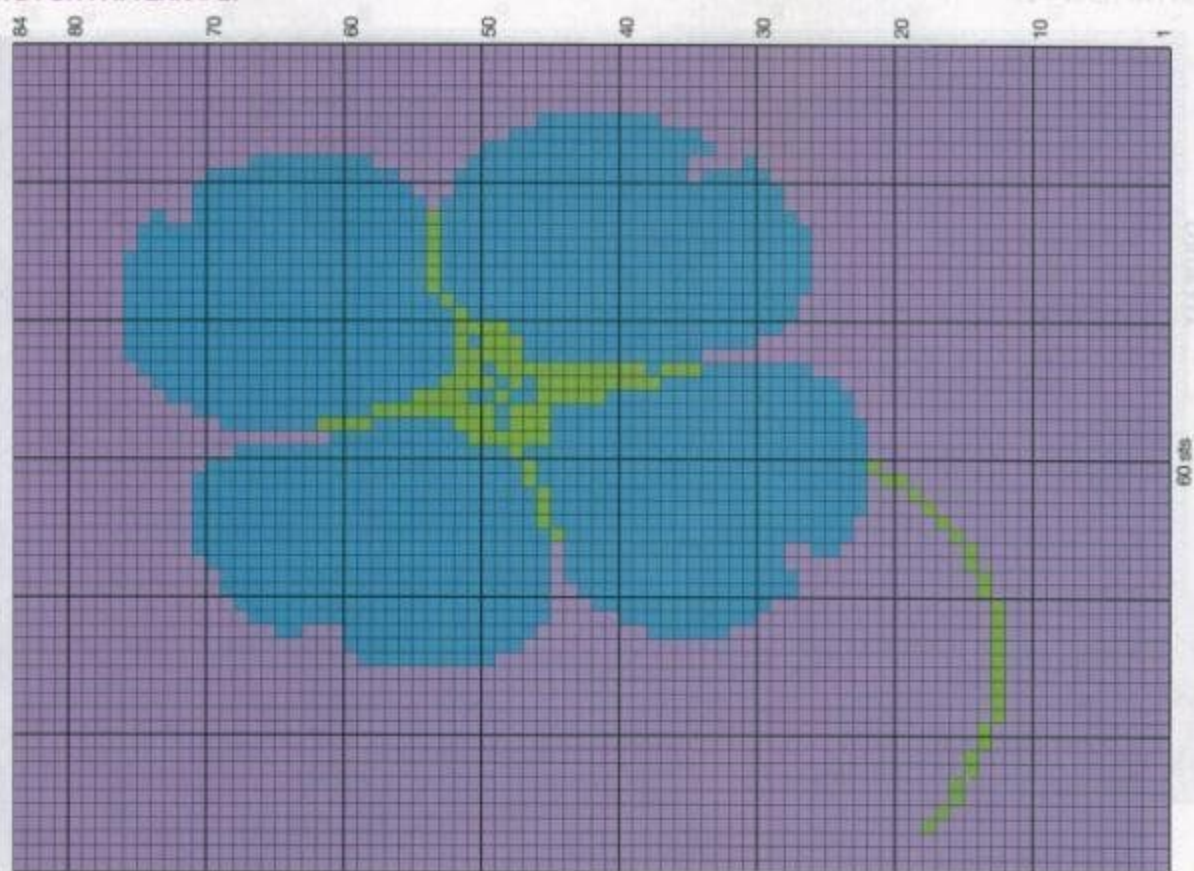


**COLOR KEY**  
 ■ #54 Red (B)  
 ■ #74 Aqua (G)  
 ■ #82 Burgundy (P)

60 sts





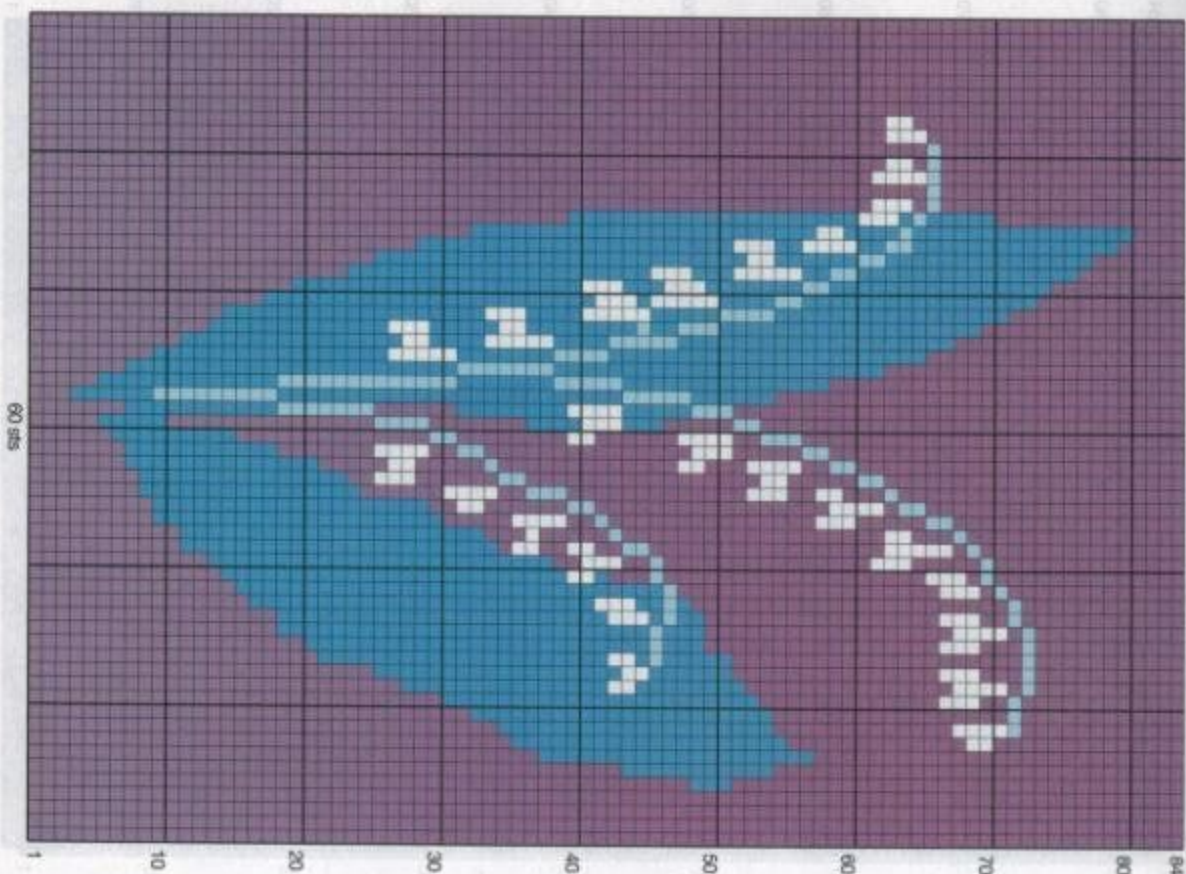


smaller version (optional)

☐ gift tag ☐ payment enclosed ☐ order by mail to: [unclear]

Over \$15.00, please allow 5-6 weeks for delivery. Delivery to the United States only. Other countries, please inquire.

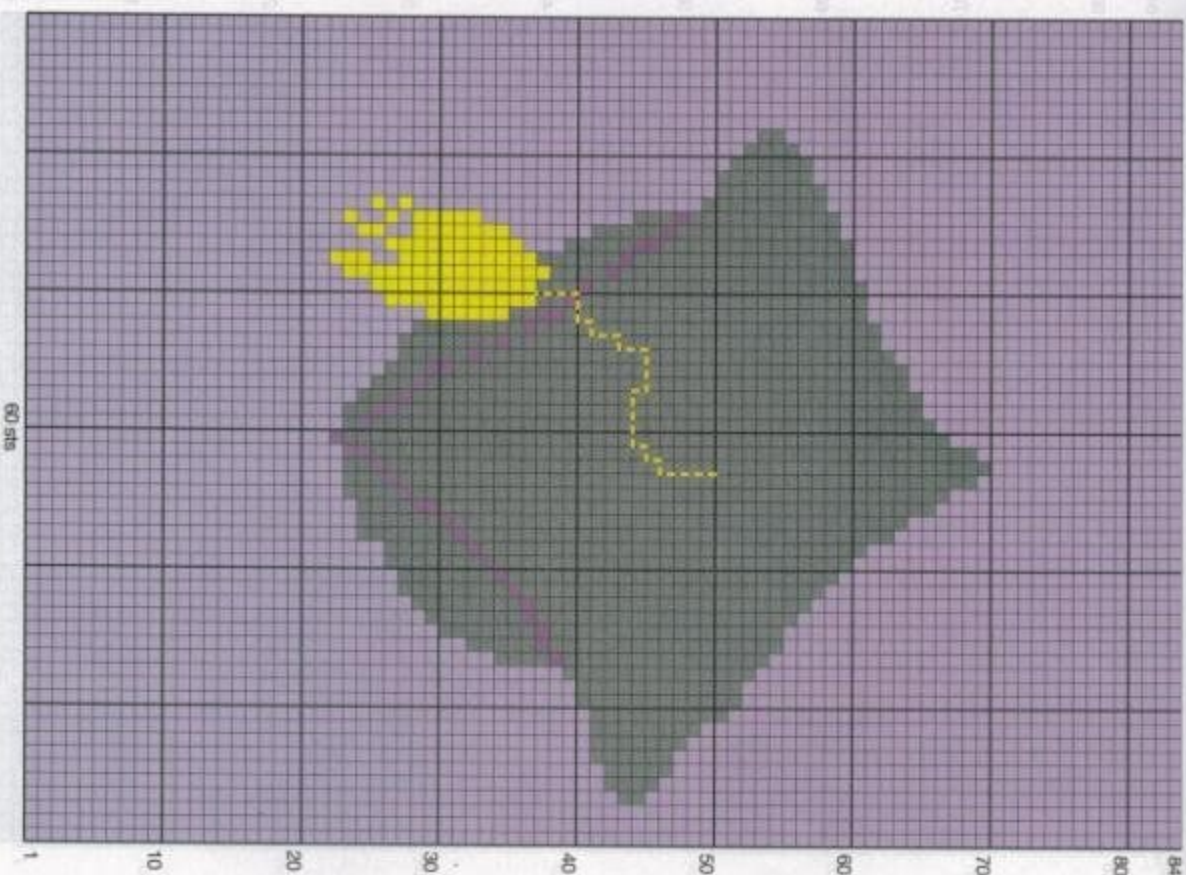




COLOR KEY

- #53 White (A)
- #66 Sea spray (C)

#74 Aqua (G) YARN SQUAD  
#69 Mead (N) and #69 Mead (N)  
#69 Mead (N) and #69 Mead (N)  
#69 Mead (N) and #69 Mead (N)  
#69 Mead (N) and #69 Mead (N)



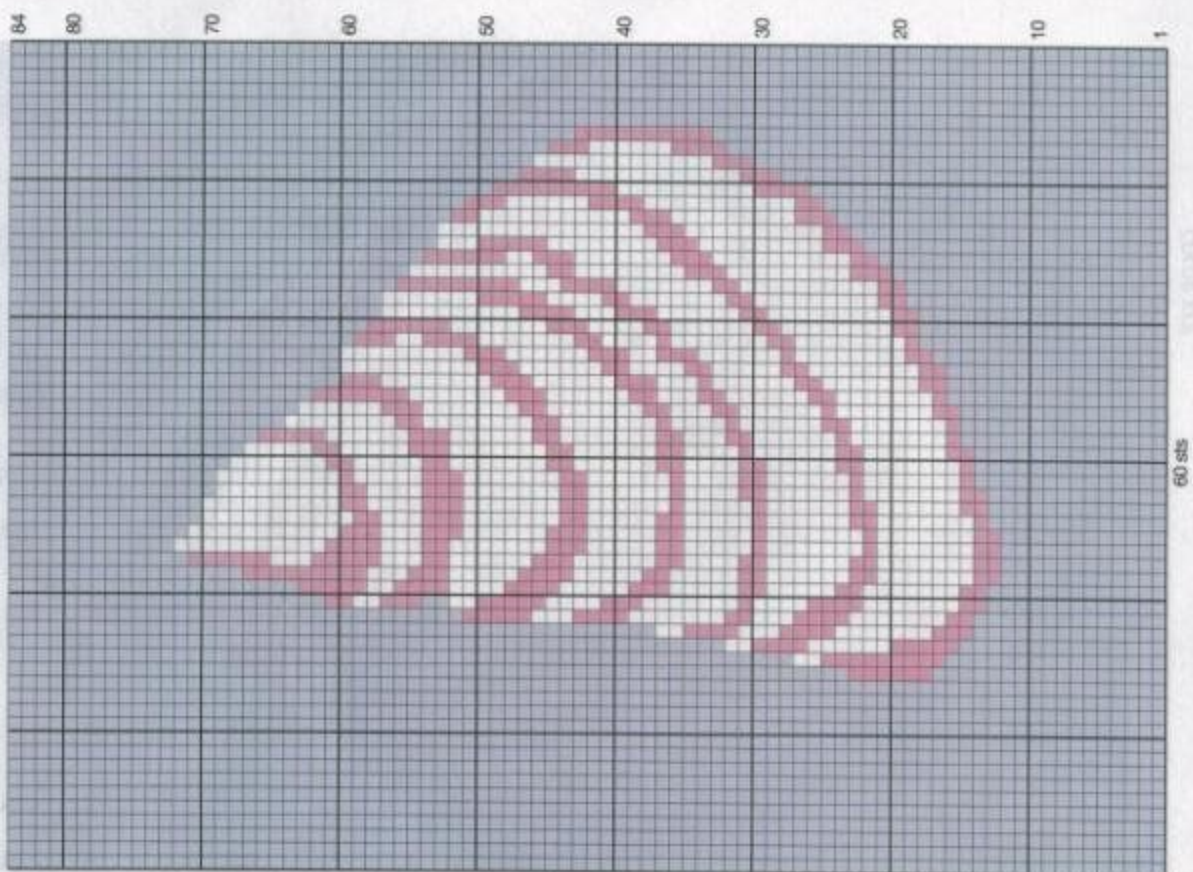
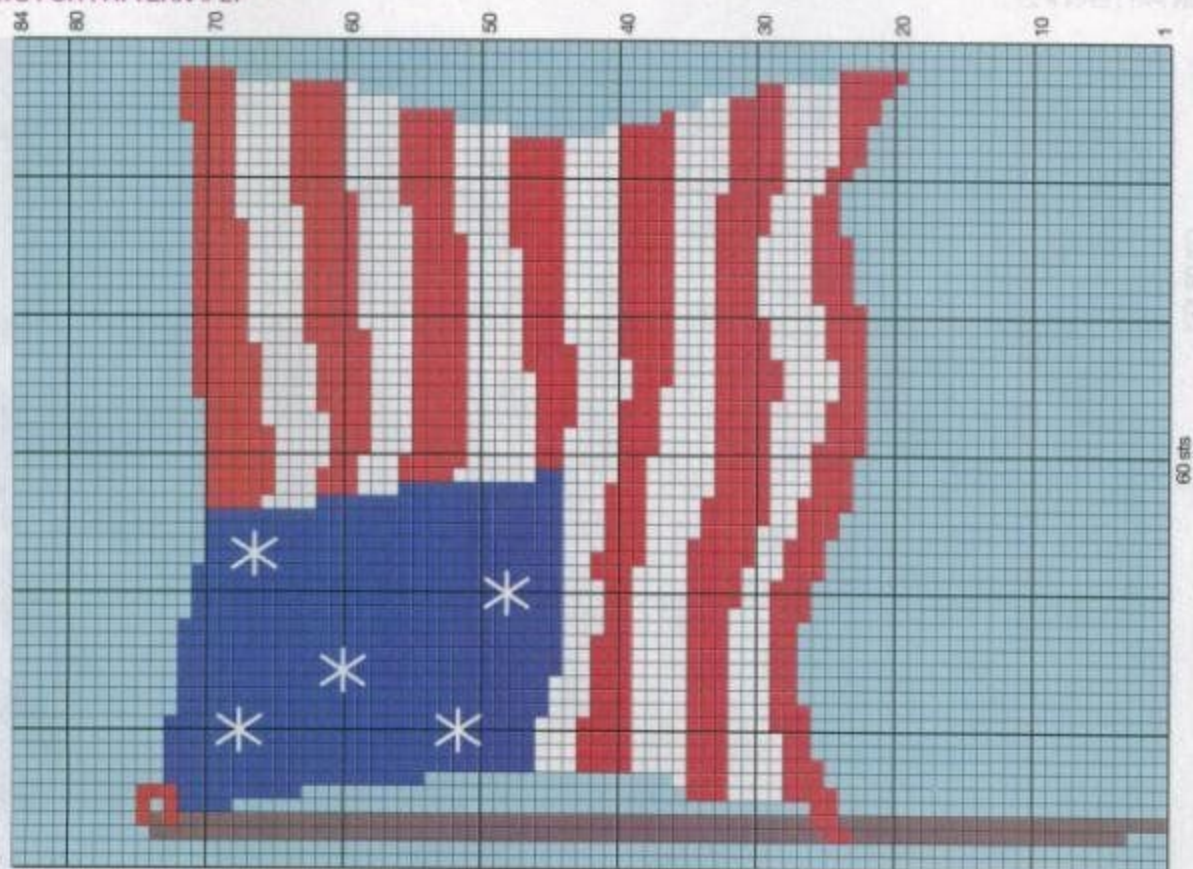
COLOR KEY

- #67 Ebony (D)
- #77 Lavender (I)
- #60 Yellow (J)

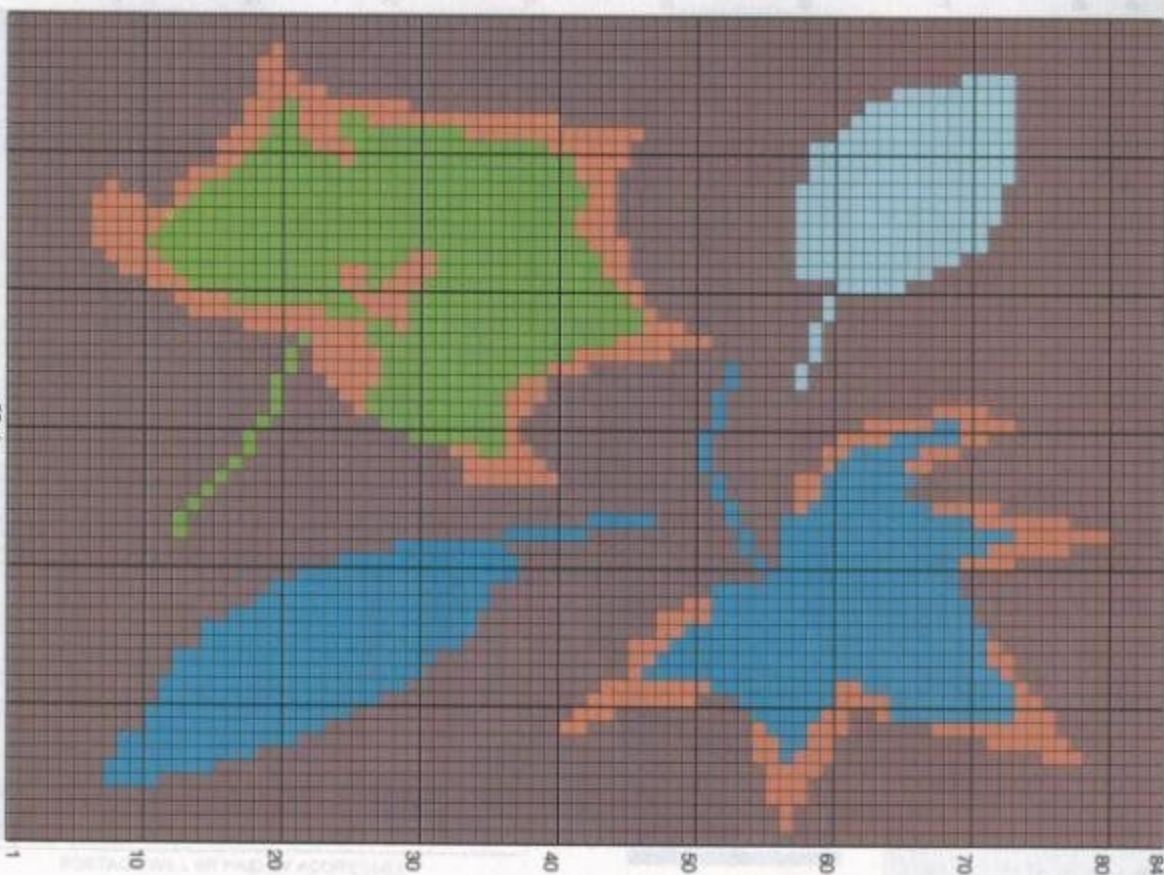
#69 Mead (N) YARN SQUAD  
#69 Mead (N) and #69 Mead (N)  
#69 Mead (N) and #69 Mead (N)  
#69 Mead (N) and #69 Mead (N)  
#69 Mead (N) and #69 Mead (N)



# CHARTS FOR PATTERN # 27

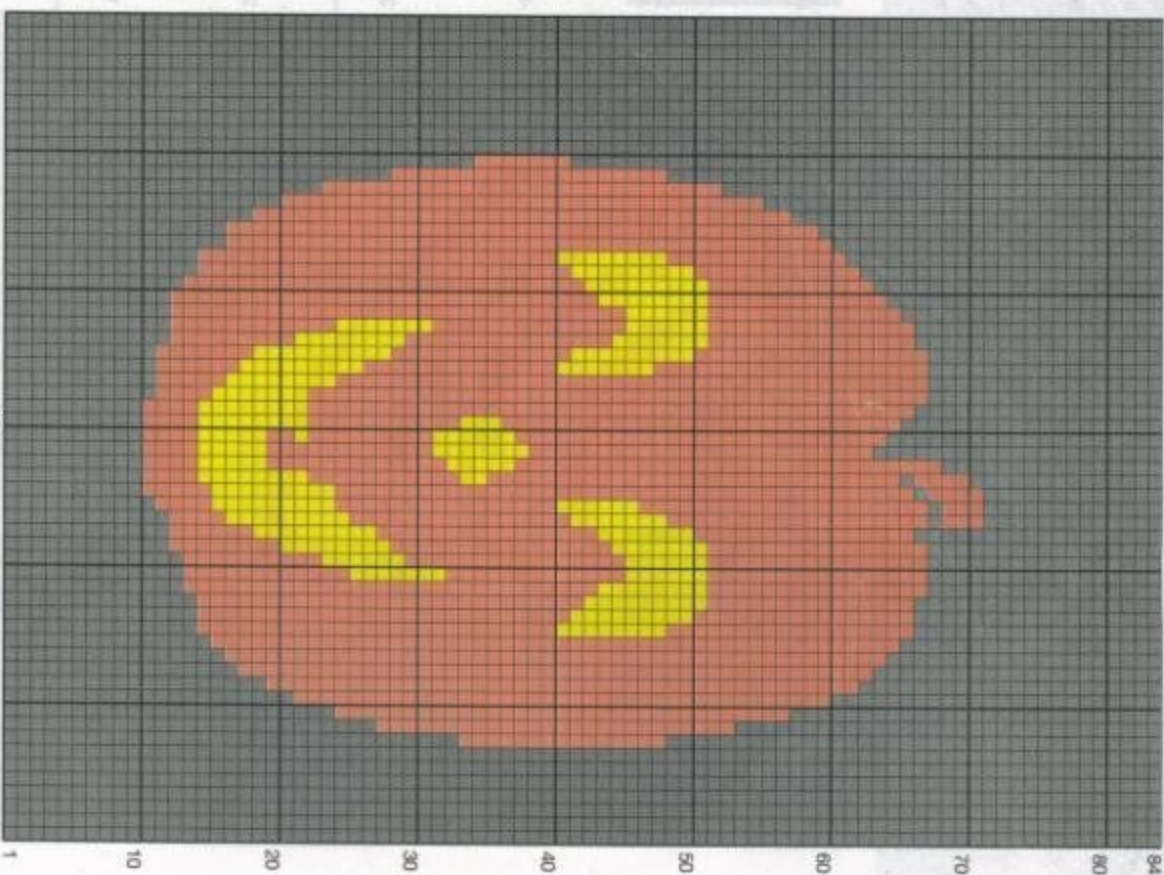






COLOR KEY

- #66 Sea spray (C)
- #74 Aqua (G)
- #90 Chocolate (J)
- #63 Bottle green (M)
- #88 Orange (Q)

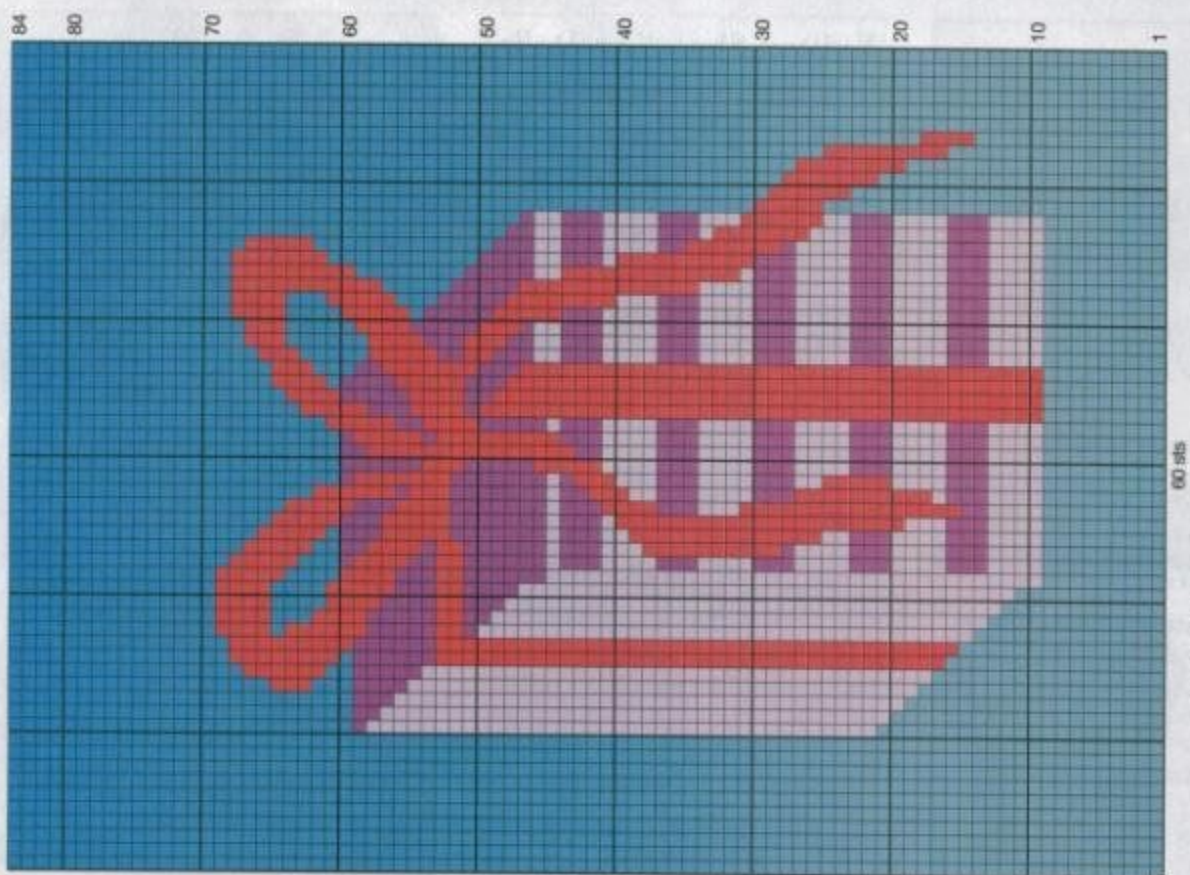
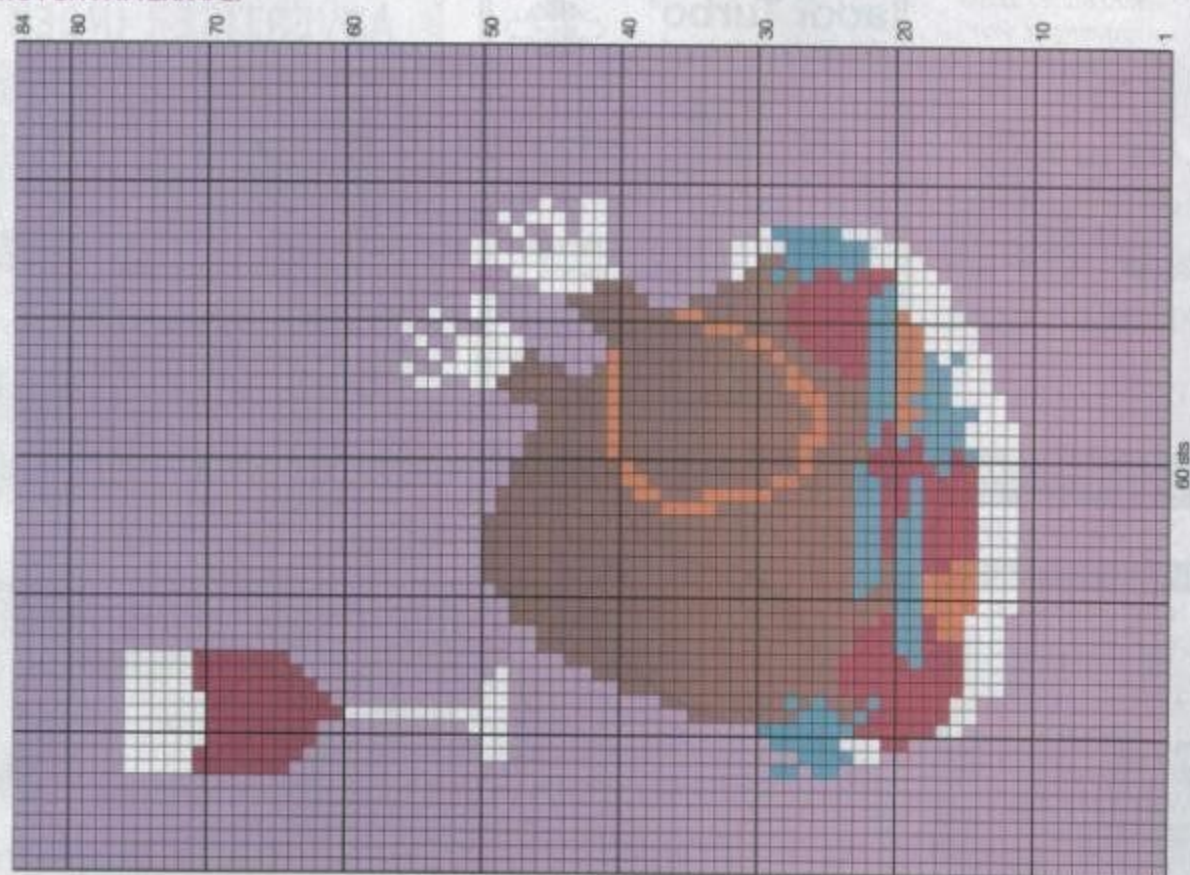


COLOR KEY

- #67 Ebony (D)
- #60 Yellow (I)
- #88 Orange (Q)



# CHARTS FOR PATTERN # 27





# *Classic Elite*

