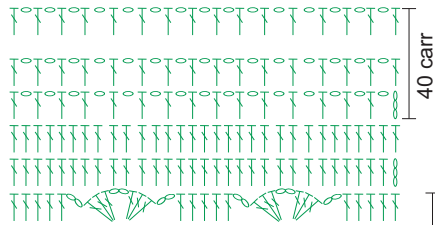
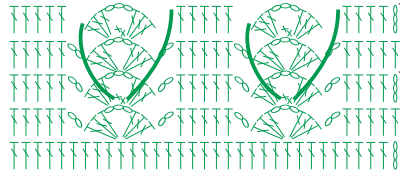


Acabamento

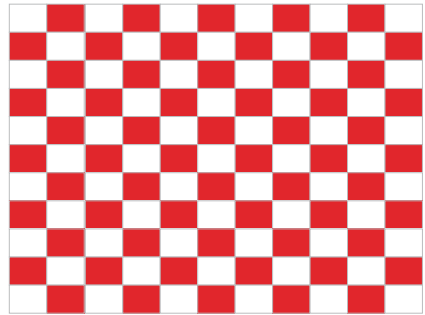


40 carr

Costas

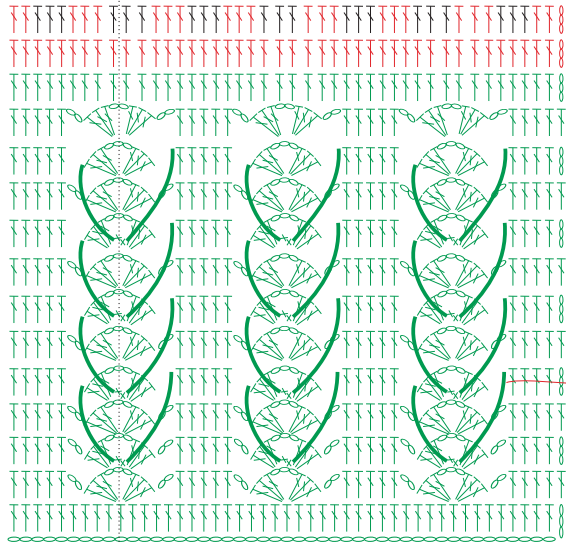


Repetir  
11 carr

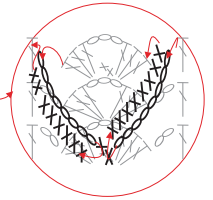


12 carr

Frente

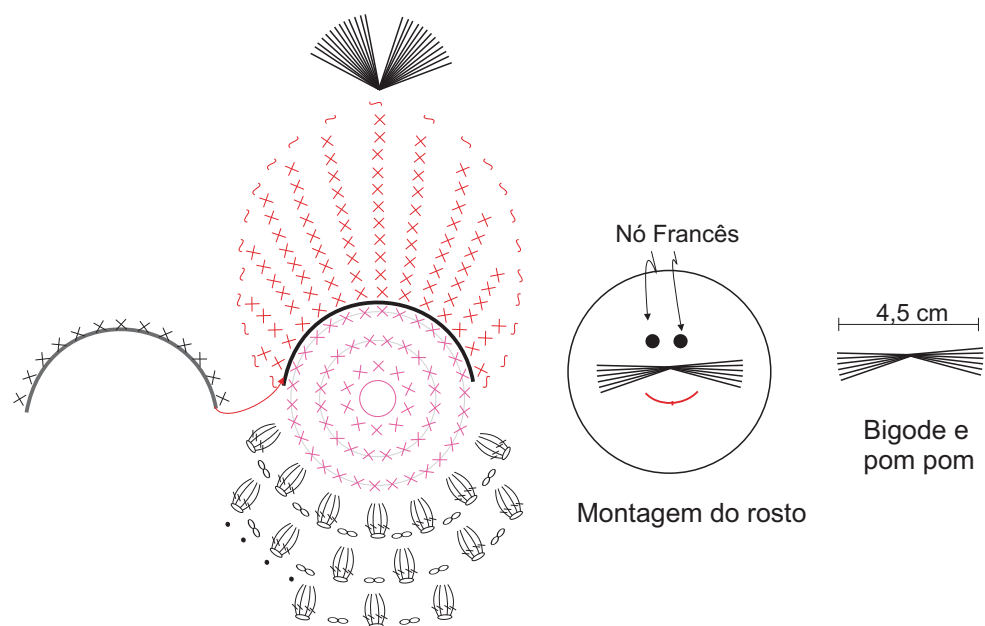
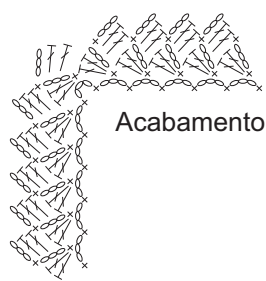
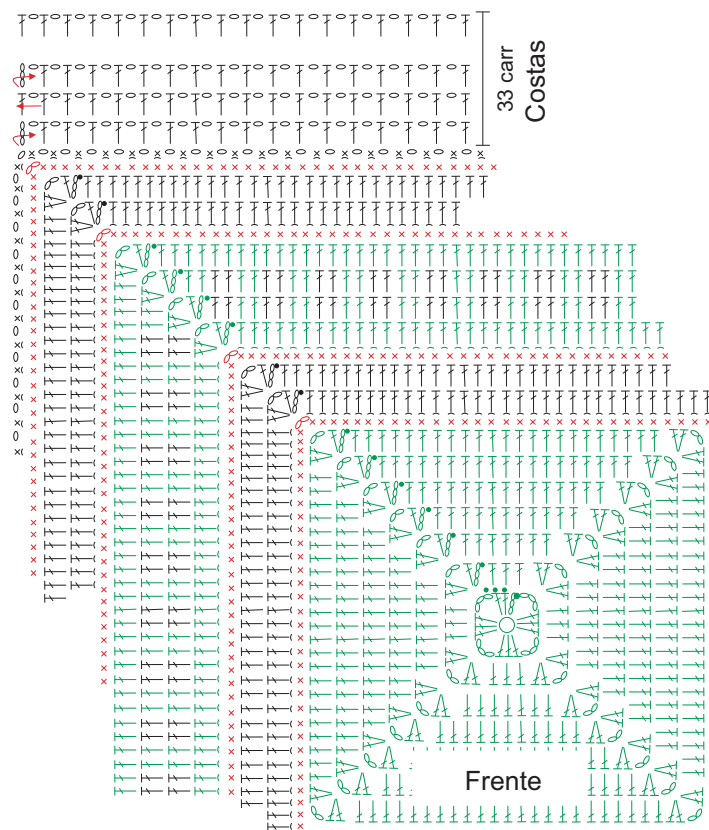


Meio



### Legenda

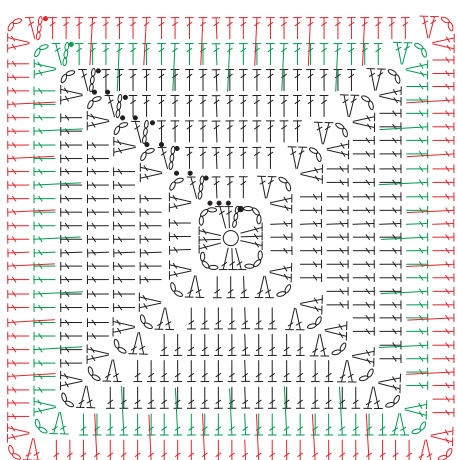
- correntinha
- ponto baixíssimo
- × ponto baixo
- ⊥ ponto alto
- cada quadradinho representa 3 p.a.



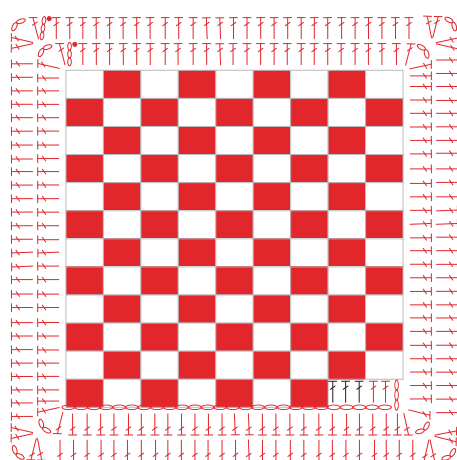
Papai Noel

### Legenda

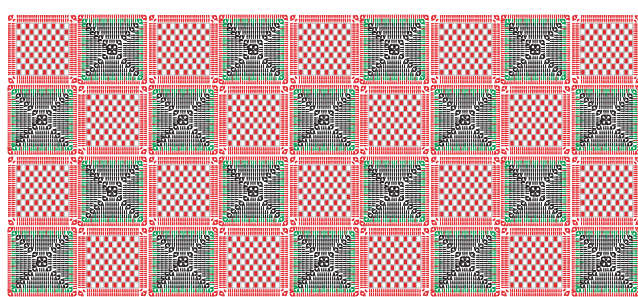
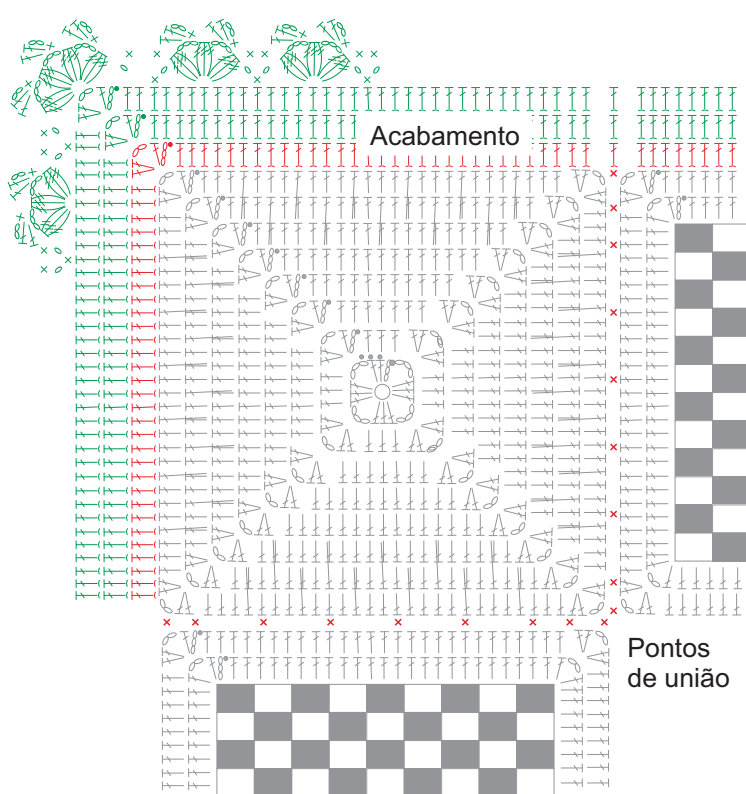
- correntinha
- ponto baixíssimo
- × ponto baixo
- ⊗ ponto baixo pegando somente na alcinha de trás do ponto da carr anterior
- ⋈ ponto caranguejo
- ⋈ ponto alto
- ⋈ ponto alto pegando somente na alcinha de trás do ponto da carr anterior
- ⋈ pipoca (4 pontos altos no mesmo lugar, 1 ponto baixíssimo no 1º ponto alto)



Quadrado 1



Quadrado 2



Esquema de Montagem

**Legenda**

- correntinha
- ponto baixíssimo
- × ponto baixo
- ┆ ponto alto
- ┆ ponto alto pegando na alça de trás do ponto de base
- ┆ 3 pontos altos duplos no mesmo lugar tirados juntos
- cada quadradinho representa 3 pontos altos