

Tilda Friends



Cow



with Overalls



Tilda Friends Cow

Height: 52cm (20½in)

Materials needed

- Fabric 1: 55cm x 50cm (21¾in x 19¾in) – Doll fabric caramel (140002)
- Fabric 2: 21cm x 10cm (8¼in x 4in) – Doll fabric sand (140003)
- Fabric 3: 35cm x 18cm (13¾in x 7in) – Gwendelyn umber (100270)
- Fabric 4: 54cm x 31cm (21¼in x 12¼in) – Farm Flowers green (110016)
- Fabric 5: 35cm x 18cm (13¾in x 7in) – Gracie teal (100279)

FIBREFILL APPROX. 170G

We also recommend using the following:

- Sewing machine
- Matching thread and a sewing needle for hand sewing
- Flower stick or chopstick for turning and stuffing
- Thick paper for copying patterns
- Black hobby paint and a small metal-headed pin for eyes
- Soft pink lipstick, rouge or stamp pad, and a dry brush for rosy cheeks

Making the Cow

1 Refer to the bullet points below on making the project and read all the project instructions through before you start. See **Fig A** for the fabrics used.

- We suggest copying or gluing all the pattern pieces onto thick paper and then cutting out the shapes.
- Unless otherwise instructed, sew on the outer line of the pattern. Generally, no seam allowances are included in the patterns, *except* for areas marked with ES (extra seam allowance).
- Cut out the shapes after sewing, cutting ⅛in–¼in (3mm–6mm) outside the sewn line.
- When sewing the seams, reduce your stitch length to 1.5mm–1.6mm.
- To get a good shape, cut snips in the seam allowance where seams curve tightly inwards.
- Stuff well, using a stick to fill small areas.
- Sew up openings with matching thread and small stitches.

Fig A



2 Fold the piece of Fabric 1 (caramel doll fabric) right sides together, so it's about 11in x 19¾in (27.5cm x 50cm), and press. Using the patterns, draw one head/body, two legs, two arms and two ears (**Fig B**). Using Fabric 2 (sand doll fabric) for the horns, fold the fabric right sides together and draw two horns (**Fig B**).

3 On both pieces of fabric, mark all openings and then sew around the pieces (**Fig C**). Note that the opening in the head and at the bottom of the body should be open, except for two small seams on each side at the bottom, which are only there to keep the fabric together. Cut out the pieces with an approximate $\frac{1}{8}$ in (4mm) seam allowance, but add extra seam allowances by the openings. Cut notches where seams curve inwards.

Fig B

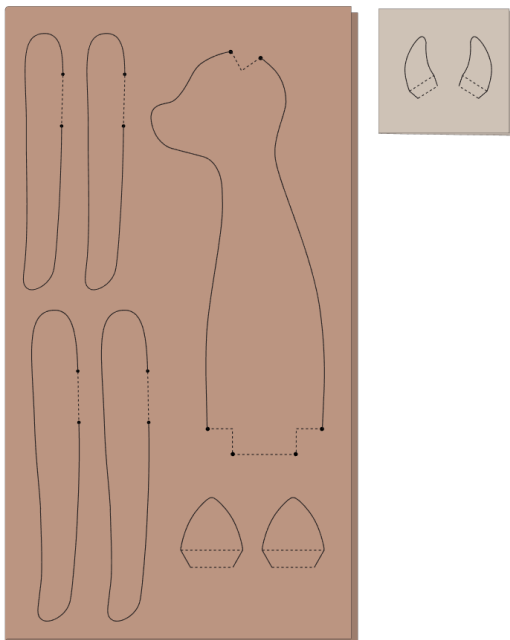
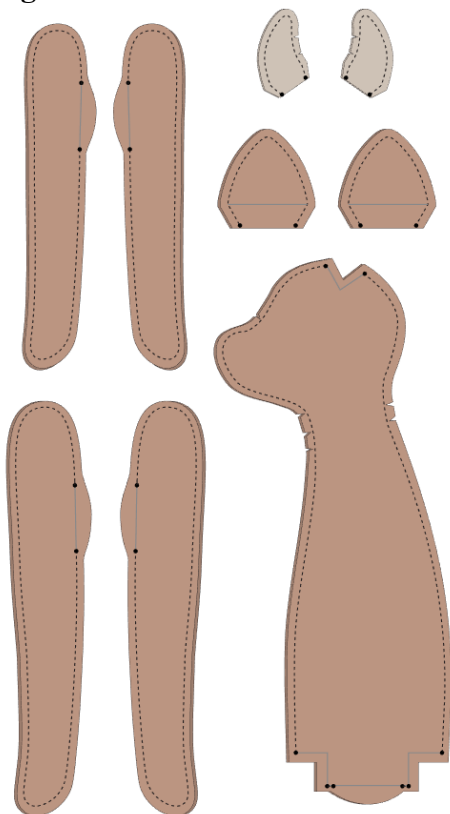


Fig C



4 Take the body piece and fold the fabric on each side of the opening at the bottom of the body, placing the seams over and under each other, as shown by the arrows in **Fig D**. Now sew together, as shown in **Fig E**.

Fig D

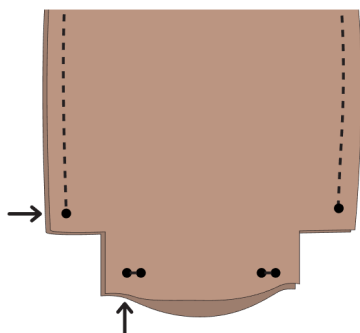
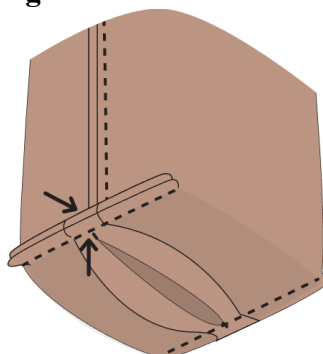
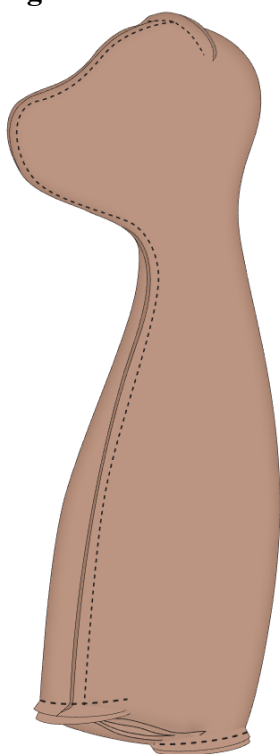


Fig E

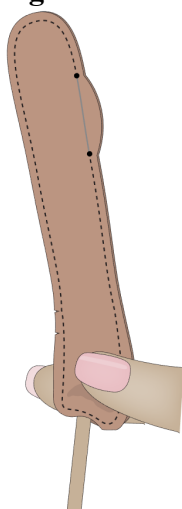
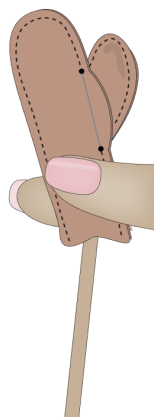


5 Fold up the opening on the top of the head, placing the seams on top of each other to create depth, and then sew up the opening, as shown in **Fig F**.

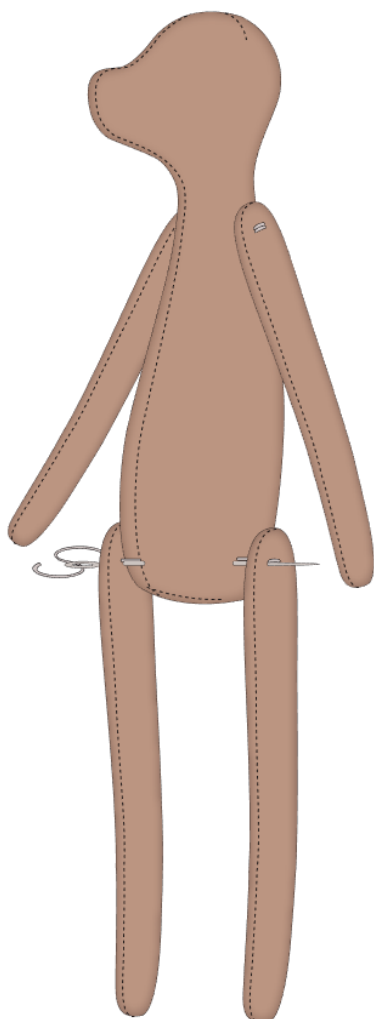
Fig F



6 Turn all of the parts through to the right side, fold in the seam allowance by the openings and the extra seam allowance (ES) on the ears and horns, and then press. When turning thin arms and legs it is helpful to separate the two fabric layers by using your thumb and forefinger and then place the blunt end of a flower stick or similar tool against the end of the foot/hand (see **Fig G**). Use the stick to push the fabric through the leg/arm and up through and out of the turning opening (**Fig H**). Now pull the rest through the opening and use the stick to push through the top part.

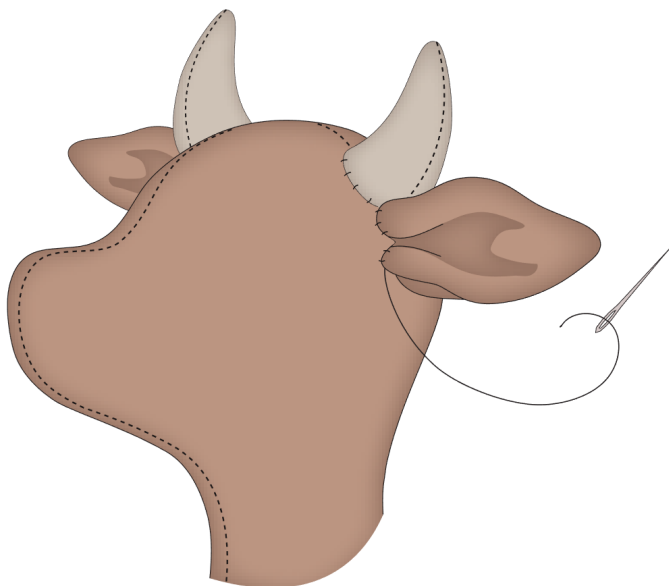
Fig G**Fig H**

7 Stuff the body, arms, legs and horns. Sew up the openings on the arms and legs, but leave the openings on the horns open. To sew on the limbs, use a large needle and a doubled sewing thread (or embroidery yarn) to sew from one arm, right through the body, through the second arm and then back again. Repeat this, two or three times, to secure the arms tightly to the body (**Fig I**). This will enable them to move easily. Sew on the legs in the same way.

Fig I

8 Attach the horns to the head with pins. Fold the ears slightly, as shown in **Fig J**, and attach them with pins beneath the horns on each side. Now sew everything in place. Stamp eyes onto the face using a metal pin with a small head, dipped in black hobby paint. When the eyes are dry, create rosy cheeks using lipstick or rouge and a dry brush.

Fig J

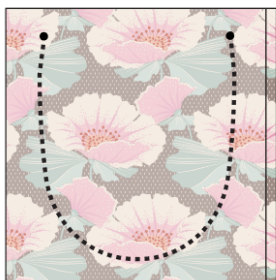


Making the Overalls

9 Start by preparing the pocket, shoulder straps (braces) and chest piece for the overalls. Fold a piece of Fabric 3 for the pocket right sides together, trace and sew around, leaving the top open (**Fig K 1**). Cut out, turn and fold in the extra seam allowance around the opening. Iron before sewing a seam across the opening (**Fig K 2**).

Fig K

1



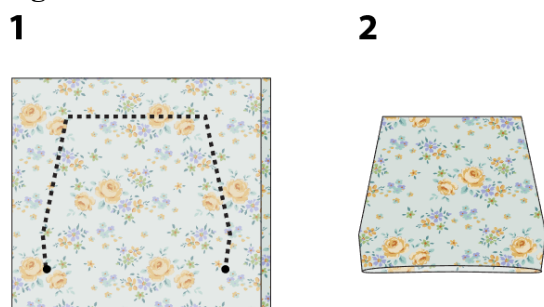
2



10 Using the remainder of Fabric 3, cut two $1\frac{3}{4}$ in x $6\frac{1}{4}$ in (4.5cm x 16cm) strips for the overall shoulder straps (braces). Using an iron, press in a $\frac{1}{4}$ in (6mm) seam allowance along the top (**Fig L 1**). Press in the same amount of seam allowance along each long side (**Fig L 2**). Fold and press the piece double and then sew together along the open side (**Fig L 3**). The straps should now be approximately $\frac{5}{8}$ in (1.7cm) wide.

Fig L

11 Fold a piece of Fabric 5 for the chest piece of the overalls right sides together, trace the chest shape and sew around. Leave the bottom open (**Fig M 1**). Cut out, turn through and press, leaving the bottom seam allowance flat and un-pressed (**Fig M 2**).

Fig M

12 Using Fabric 4 cut two pieces for the trousers part of the overalls. From the remainder of Fabric 5 cut two pieces of lining fabric. Sew the lining onto the trousers hem, so the division between the two fabrics are as shown by the dotted line on the pattern (**Fig N**). Iron the lining fabric into place. Place the two finished parts of the trousers right sides together and sew along one curved side, as shown in **Fig O**.

Fig N**Fig O**

13 Unfold the trousers and pin the pocket in place (see position on the pattern). Sew around the curved edge of the pocket, leaving the top open (**Fig P**). Now place the chest piece against the trousers, right sides together, as in **Fig Q**, and sew in place. The seam should be approximately 1in (2.5cm) over the top of the pocket. (The extra seam allowance on the trousers and chest piece will be folded in so that the chest piece turns upwards.)

Fig P**Fig Q**

14 Fold the overalls right sides together and sew along the other curved side, as shown on **Fig R**. Now fold the work the other way, so that you get two legs, as in **Fig S**, and then sew the seam.

Fig R**Fig S**

15 Turn and press the overalls. Fold in and press the extra seam allowance on top, and then fold and press in the lining fabric on each leg (**Fig T**). Fold and press up about $\frac{3}{4}$ in (2cm) of the hem on each leg so the lining is visible.

Fig T



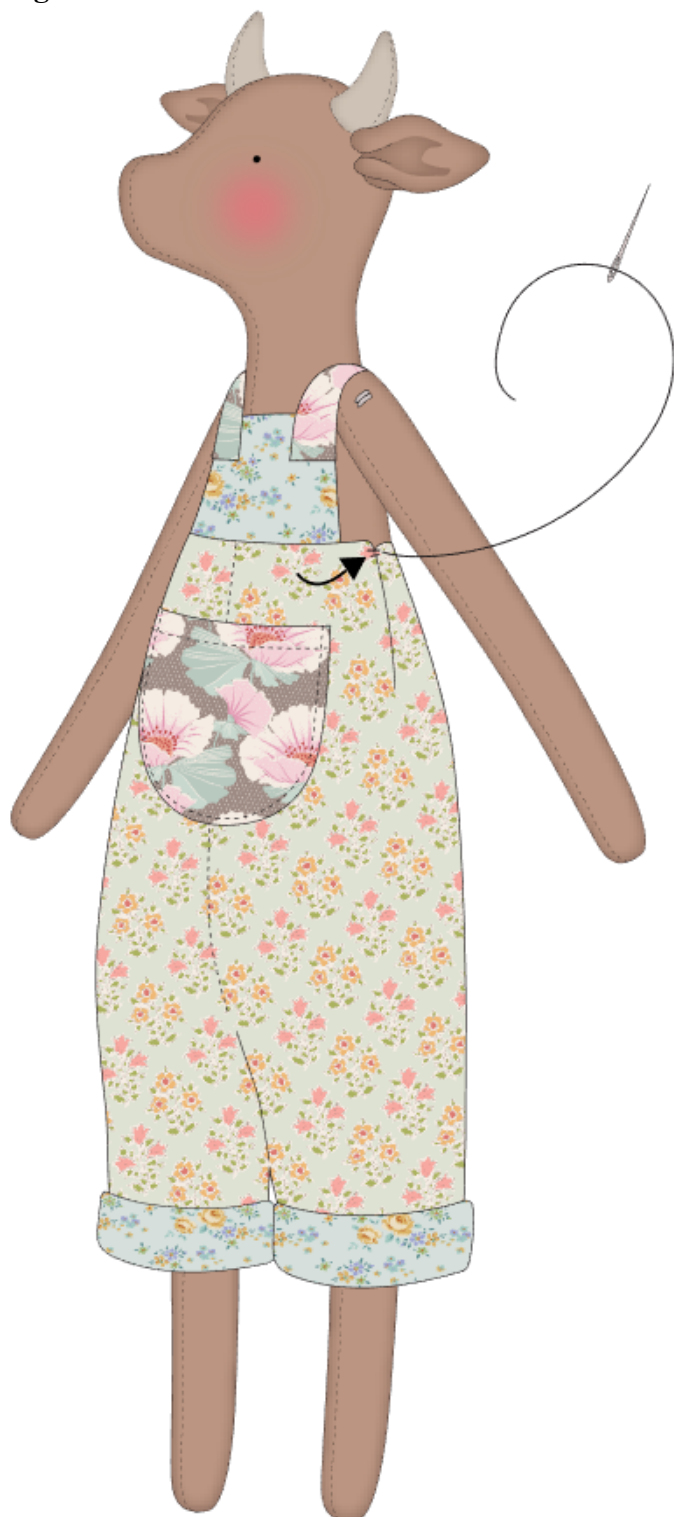
16 Attach the folded-in side of the shoulder straps to the chest by sewing a cross or a few stitches along the edge. You could also use small buttons, sewing through both layers when attaching them. You could even make buttonholes in the straps, so the overalls can easily be removed. Attaching the straps in the front of the overalls first makes it easier to adjust them at the back before sewing them in place (**Fig U**).

Fig U



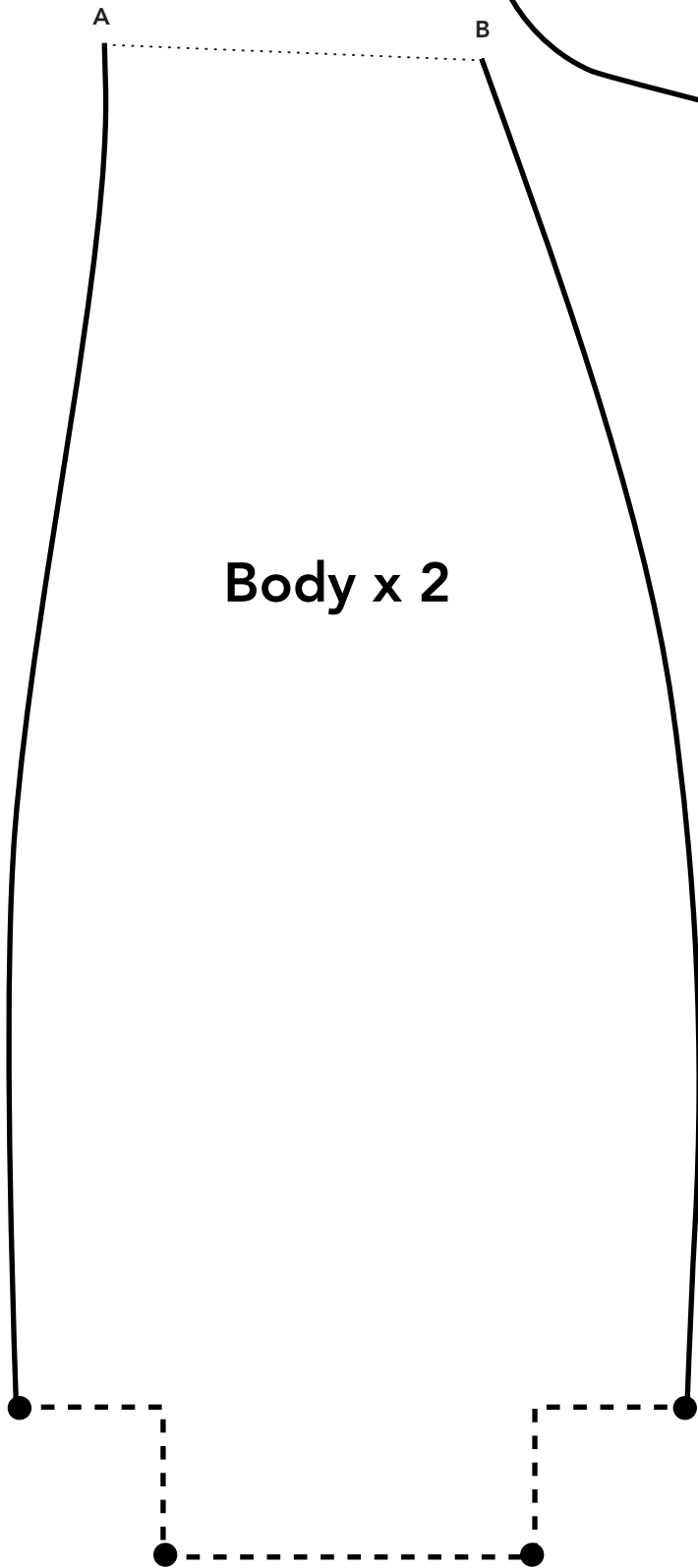
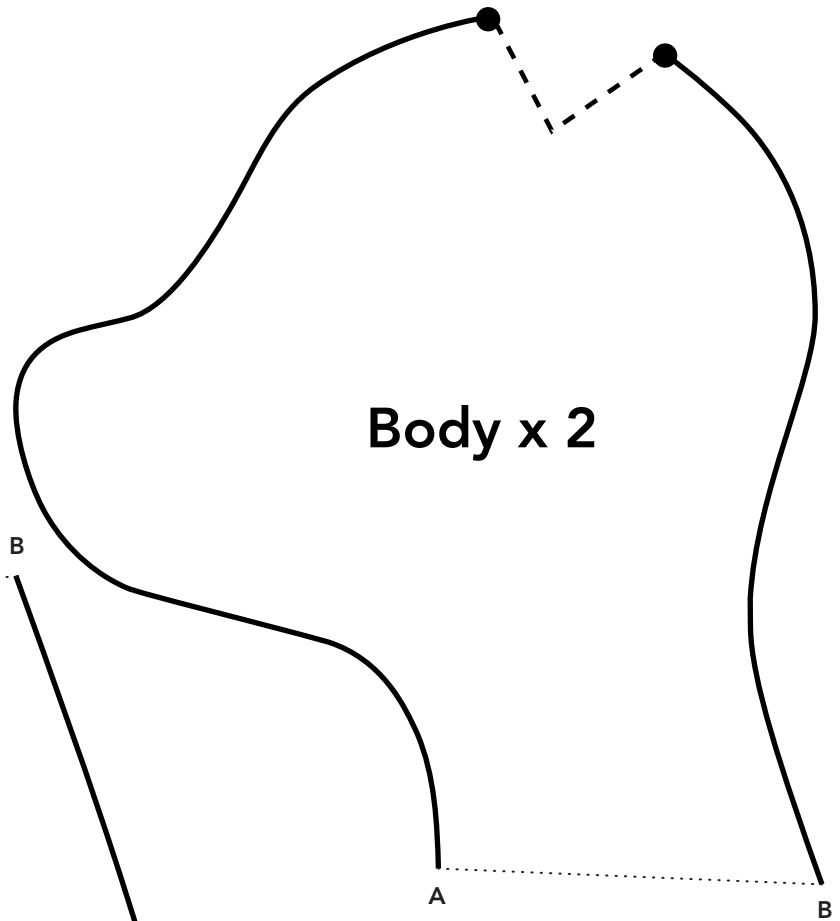
17 Dress the cow. Cross the straps at the back and pin the ends inside the overalls, adjusting so the overalls look good and then sew them on. Fold a small pleat on each side of the trousers – it should still be loose around the waist – and then sew a couple of stitches to keep each pleat in place (see arrow on **Fig V**). You Tilda Friend is now finished.

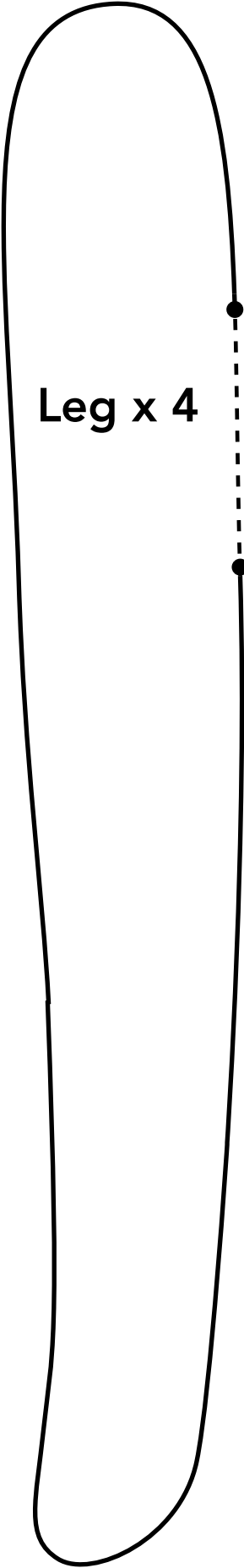
Fig V



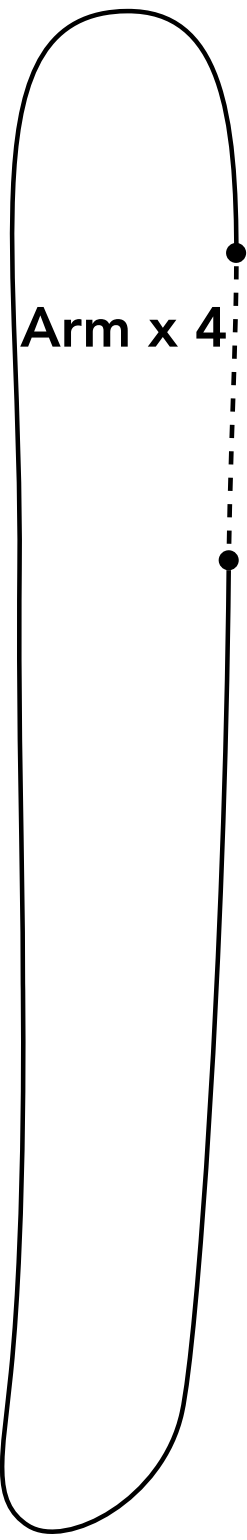
Cow Patterns

Add a seam allowance to all pattern pieces. The edges of the patterns mark the seams. Dotted lines indicate openings and folded edges. ES stands for Extra Seam allowance and appears by openings where it is important to continue the seam to the very end of the seam allowance. This ES is included in the pattern, and where it appears there is no need to add the normal allowance too.

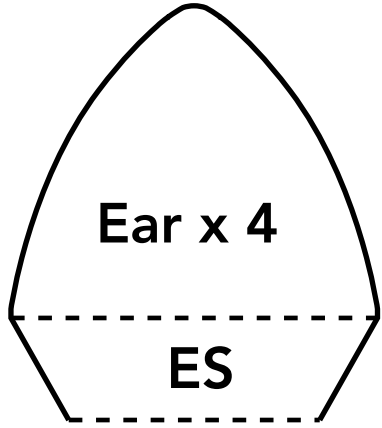




Leg x 4

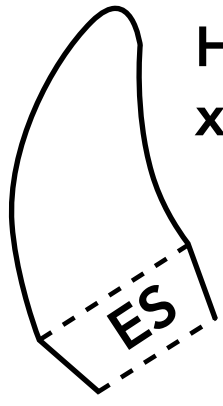


Arm x 4



Ear x 4

ES



**Horn
x 4**

ES

