

10

20

30

40

50

60

70

10

20

30

40

50

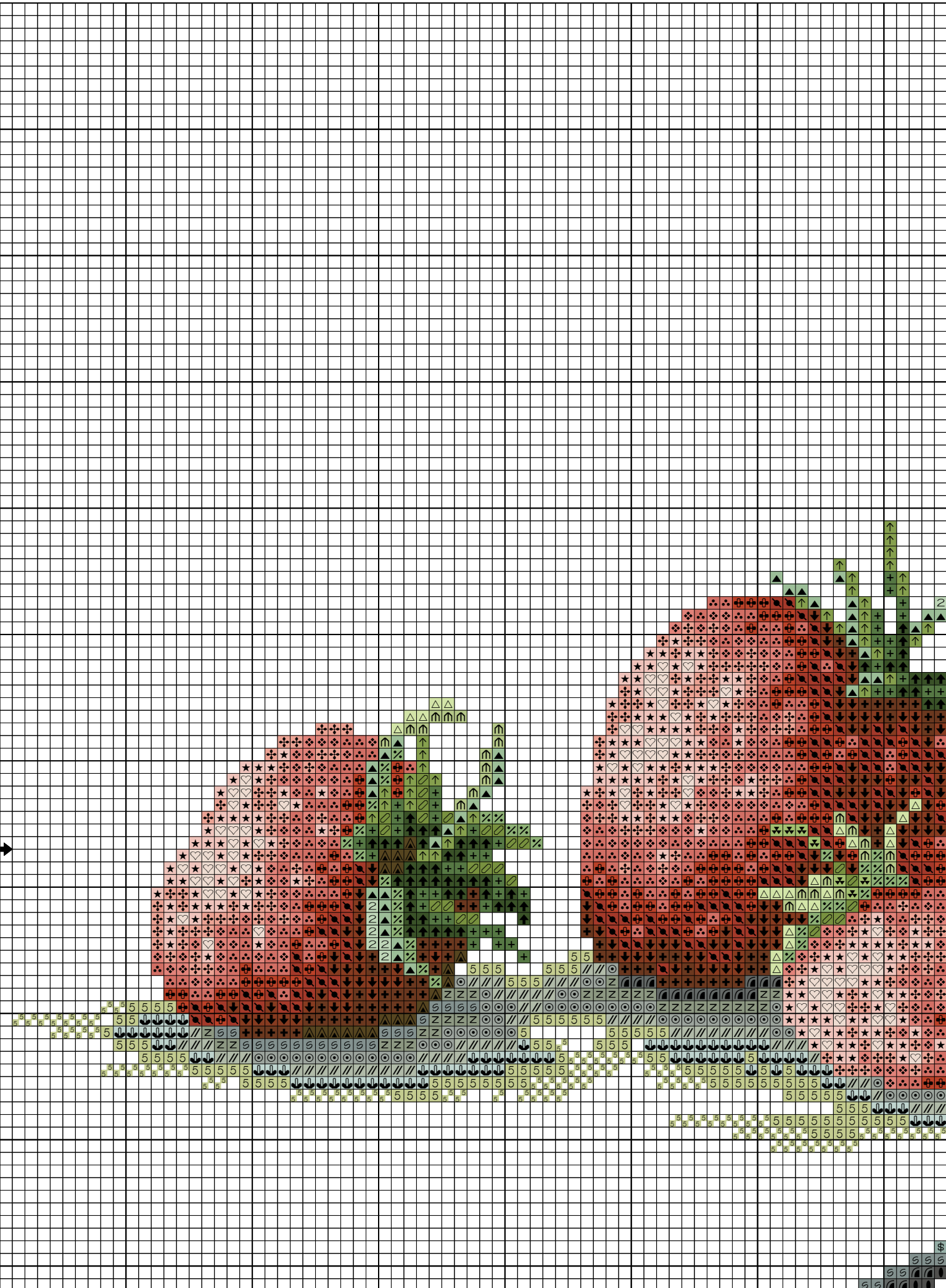
60

70

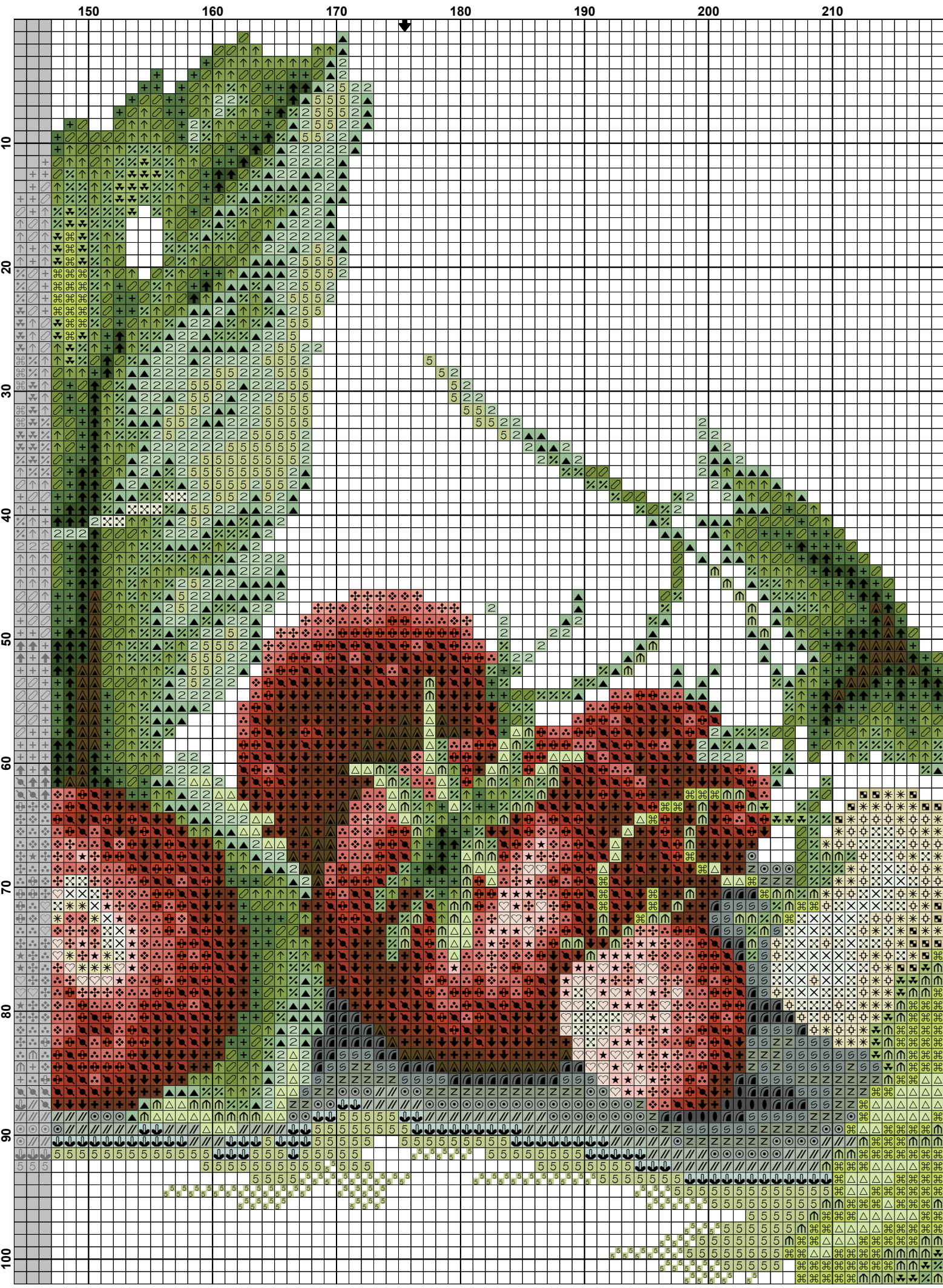
80

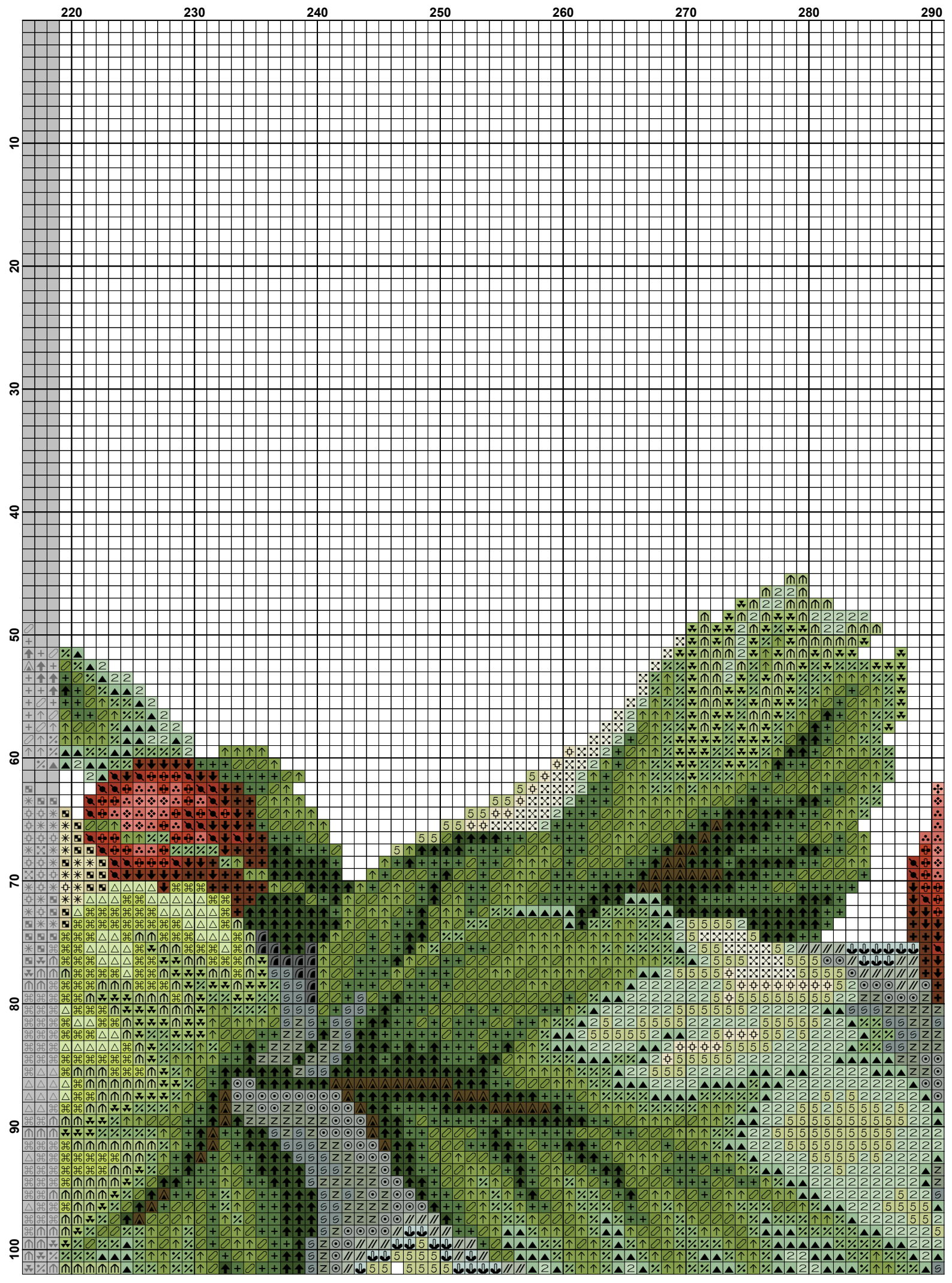
90

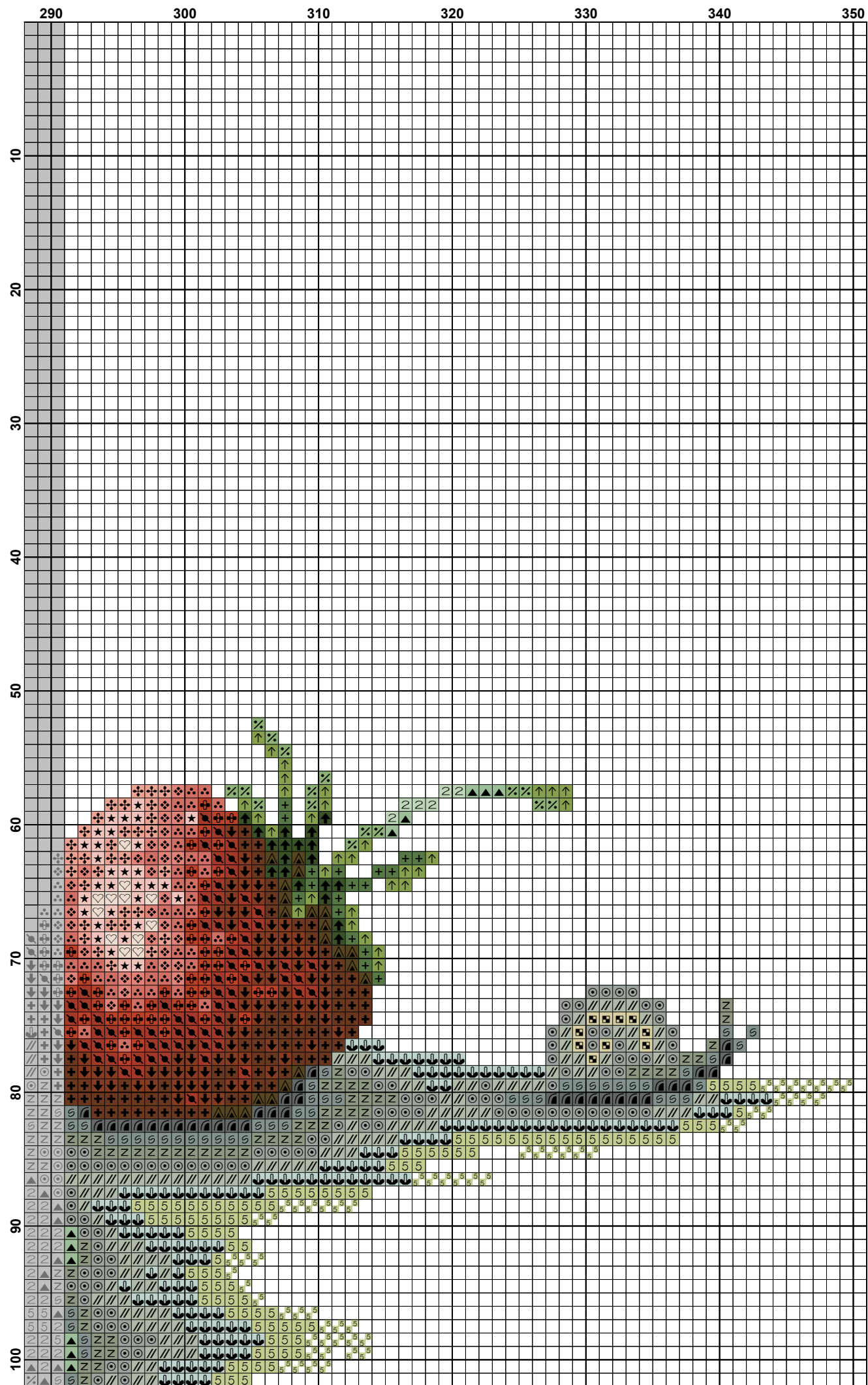
100

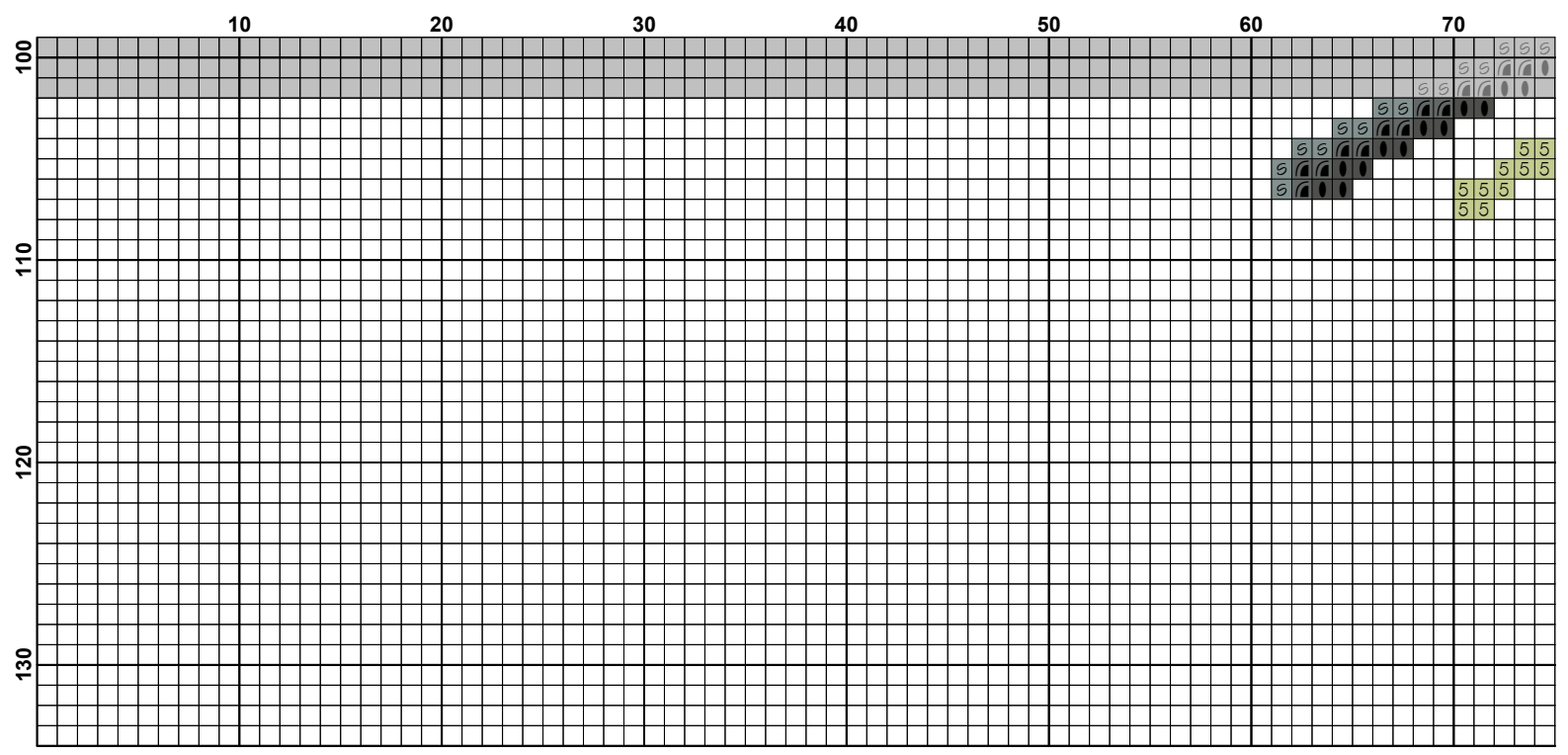


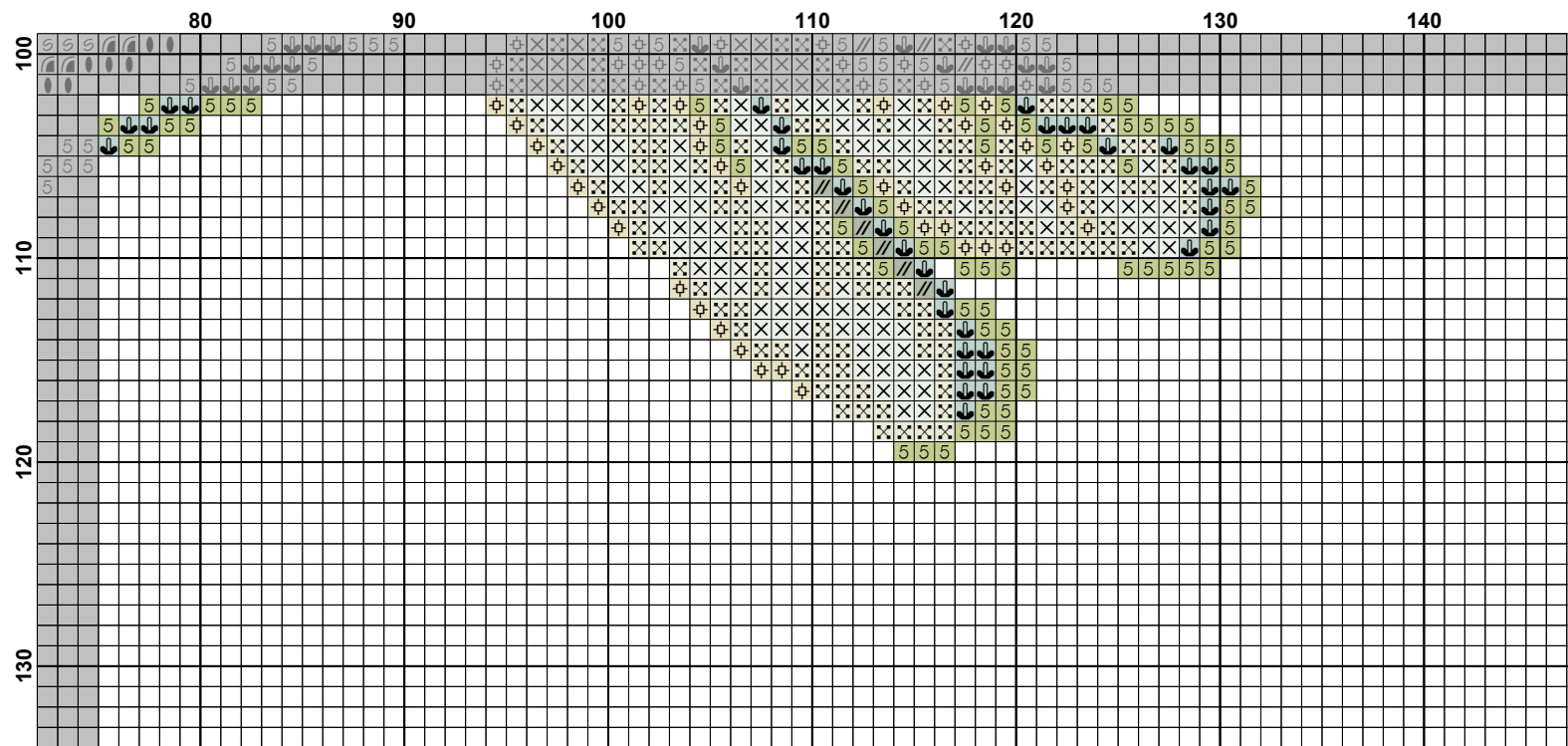


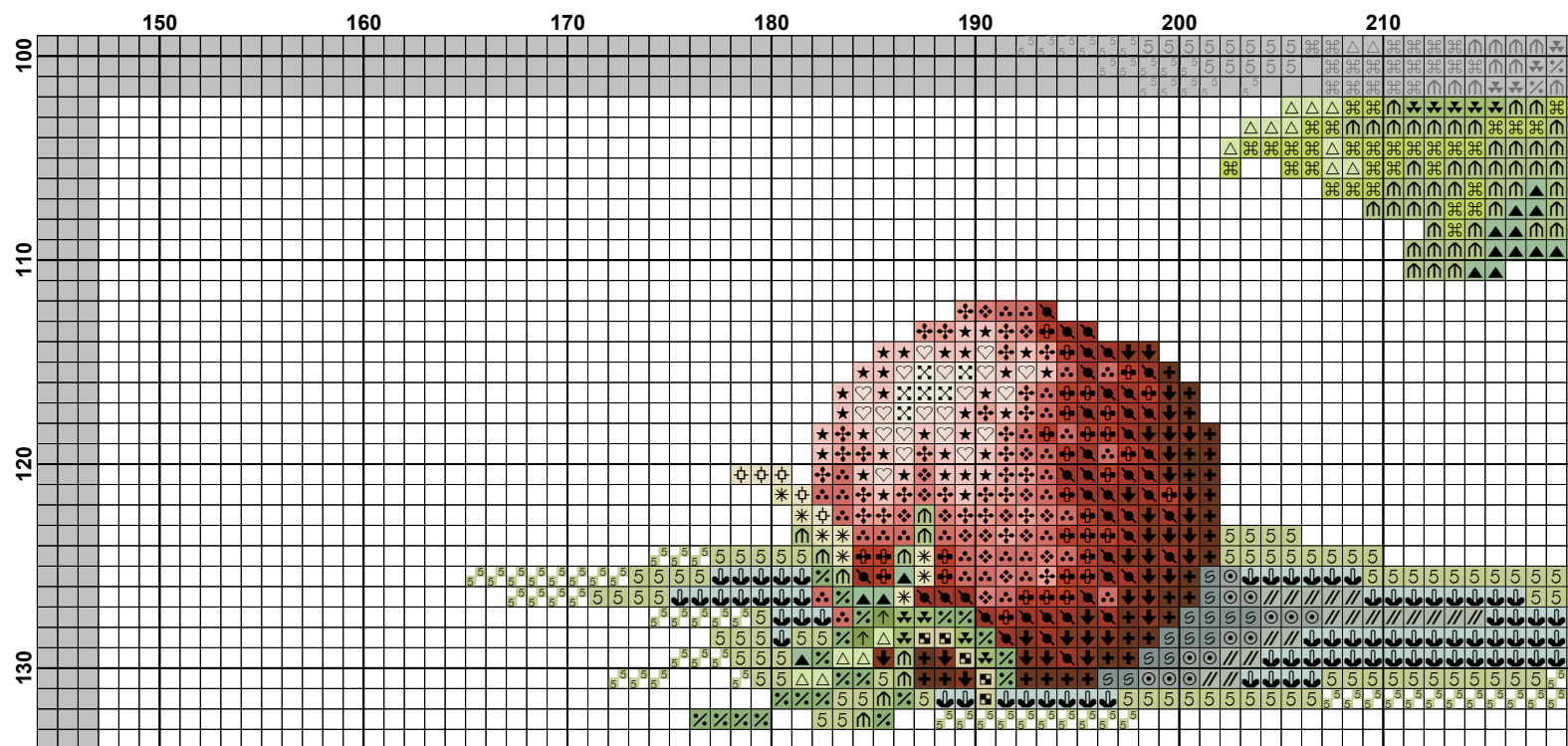


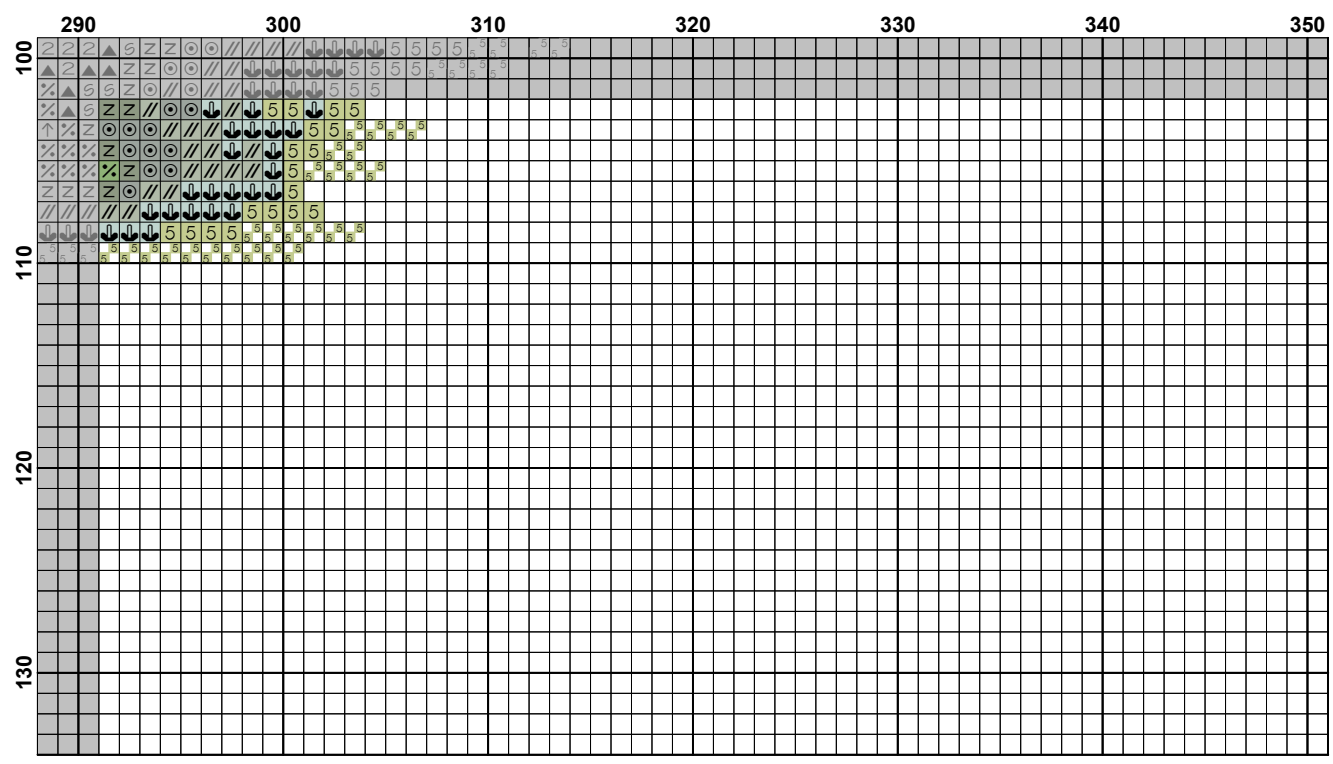












Fabric: Aida 14, White
349w X 132h Stitches
Size: 14 Count, 63.32w X 23.95h cm

Floss Used for Full Stitches:

Symbol	Strands	Type	Number	Color
	2	Anchor	2	White
	2	Anchor	13	Salmon DK
	2	Anchor	20	Burgundy Med DK
	2	Anchor	45	Carmine Rose VY DK
	2	Anchor	213	Juniper VY LT
	2	Anchor	214	Juniper LT
	2	Anchor	235	Charcoal Grey Med
	2	Anchor	254	Parrot Green LT
	2	Anchor	259	Loden Green VY LT
	2	Anchor	261	Loden Green Med LT
	2	Anchor	262	Loden Green Med
	2	Anchor	263	Loden Green DK
	2	Anchor	264	Avocado VY LT
	2	Anchor	265	Avocado LT
	2	Anchor	266	Avocado Med LT
	2	Anchor	267	Avocado Med
	2	Anchor	274	Blue Mist LT
	2	Anchor	360	Coffee DK
	2	Anchor	387	Ecru
	2	Anchor	399	Grey Med LT
	2	Anchor	400	Grey Med
	2	Anchor	401	Grey DK
	2	Anchor	842	Fern Green LT
	2	Anchor	849	Blue Mist Med LT
	2	Anchor	852	Turf VY LT
	2	Anchor	853	Turf LT
	2	Anchor	885	Sand Stone LT
	2	Anchor	900	Pewter LT
	2	Anchor	926	Ecru VY LT
	2	Anchor	1006	Cherry Red
	2	Anchor	1021	Peony LT
	2	Anchor	1022	Peony Med LT
	2	Anchor	1023	Peony
	2	Anchor	1024	Peony Med
	2	Anchor	1026	Wineberry VY LT
	2	Anchor	1040	Pewter Med

Floss Used for Half Stitches:

Symbol	Strands	Type	Number	Color
	2	Anchor	213	Juniper VY LT
	2	Anchor	842	Fern Green LT

Notes:

Рады приветствовать в Клубе Рукодельниц
«Хомячки» :) <https://vk.com/clubrucodelnic>