



Faviola, The “housewife” summer dress



so-sew-easy.com

In Latin America where I grew up, when we get up, we shower and dress ready for visitors. After all, when we say “Mi casa es su casa” we mean it. People often do not call before dropping by. Of course, they don’t expect you or your house to be perfect, but just looking plain is actually frowned upon. I’m not suggesting you take on the practice. But, then again why not? After all, you never know who you might meet while at the supermarket? Are we so comfortable at home in plain clothes that we have begun to become invisible? How does wearing super casual clothes every day affects our mood? Why do we think dressing nice has to happen only when we go somewhere special?

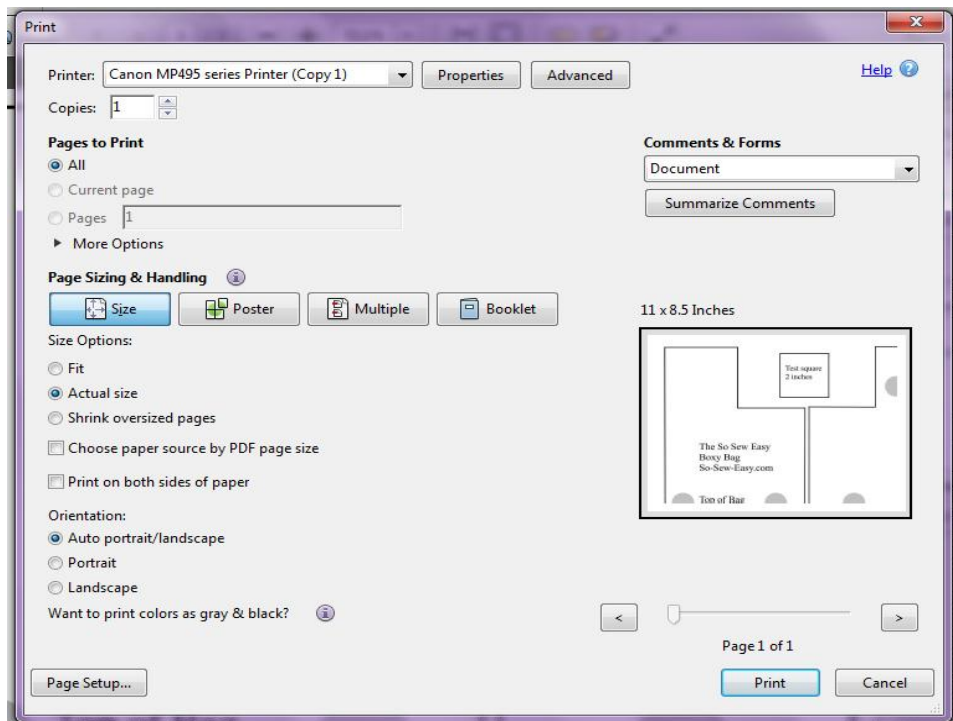
This dress is very easy to make. It does take a bit of effort to prepare the fabric, but once you are ready, it can be sewn in 30 minutes. Make it and try the dress to go the supermarket or take a stroll around the neighborhood and see how many people ask you if you are coming or going to a party. What are you celebrating today? You! Yes I am wife inside a house, but I’m also a keeper, a cook, a nurse, a mother, a friend, a lover, a woman with many hats. I think this dress says all that.

You can read more about this pattern over at So Sew Easy [HERE](http://so-sew-easy.com).

Find more great sewing patterns at So Sew Easy – <http://so-sew-easy.com>



To print your PDF pattern



the reverse of your fabric to cut.

Help printing and assembling your pattern

You can find helpful tutorials on how to download, print and assemble PDF sewing patterns here:

[How to download and print a PDF sewing pattern](#)

[How to print and assemble a PDF sewing pattern](#)



Your pattern pieces come at the end of these instructions. For accurate printing, please make sure you are using the latest version of Adobe Reader. You can [download the latest version here](#) if you need to.

Select File → Print and the print dialogue box opens. Under Page Sizing and Handling, select ACTUAL SIZE . Check the preview in the right hand side illustration. Select the page numbers you want to print. You can print the whole document, or just the pattern pieces.

On the edge of the top left page is a box you can use to test your printing. This box should measure 2 inches square. If yours is wildly different you will need to check your printer options to make sure the pages are not being resized.

Use the grey guides on the overlap of the sheets to match up the pattern pieces, folding under or cutting off any overlaps, tape together and cut out your pattern pieces.

Also note that you will need to cut two straps at 4 inches by 22 inches, for which no pattern piece is supplied – it's just a rectangle! You can draw the straps on

Find more great sewing patterns at So Sew Easy – <http://so-sew-easy.com>

Materials

- Jersey (Rayon or ITY) only 2 1/4 yards for the sizes 2-14 and 2 1/2 yards from 14 to 22. Here are a couple of suggested prints: [Bohemian ITY](#), [Philadendro ITY](#), and [Catalina Blue ITY](#).
- A ball point or jersey needle. I always use [Schmetz](#).
- A double [twin needle](#) (Optional)
- A serger (optional)
- Stretchable interfacing cut on a bias or stay tape
- [Satin bias tape](#). This is what I used but any kind should do.
- Thread to match your fabric.



Find more great sewing patterns at So Sew Easy – <http://so-sew-easy.com>

Thank you for downloading this pattern and tutorial. I hope you enjoyed making this project and remember that I love to see what you made so do upload your completed projects to the pattern page on Craftsy.

Keep up with all the latest news and sewing projects at [So Sew Easy](#).

We also have a really great sewing chat group where you can ask questions, share your completed projects, and get 24 hr sewing inspiration. It's not just for So Sew Easy projects – you can chat about all sewing there, whether a newbie just starting out, or an advanced and experienced sewer, there's something for everyone in the sewing chat group. Join us here.

[SEWING CHAT GROUP](#)

For the latest list of both free and paid patterns available, pop on over to [my designer page at Craftsy](#).

This pattern graphic, the photos and the instructions are copy right Mayra Cecilia Morales at So Sew Easy. Please do not copy, publish, sell, redistribute or alter them in any way. Please don't print and give to your friends, or send it to anyone by email. Please do not rebrand this work as your own and sell or give it away, even if altered. This is intended for your personal use. If you would like to recommend these instructions, please pass on the original download link at So Sew Easy. Thank you for your understanding.

Usage – you ARE allowed to use this pattern to make things to sell on a small handmade basis, such as for craft fairs and for your Etsy shop. However it may not be used for larger scale commercial purposes without a commercial licence.

Find more great sewing patterns at So Sew Easy – <http://so-sew-easy.com>



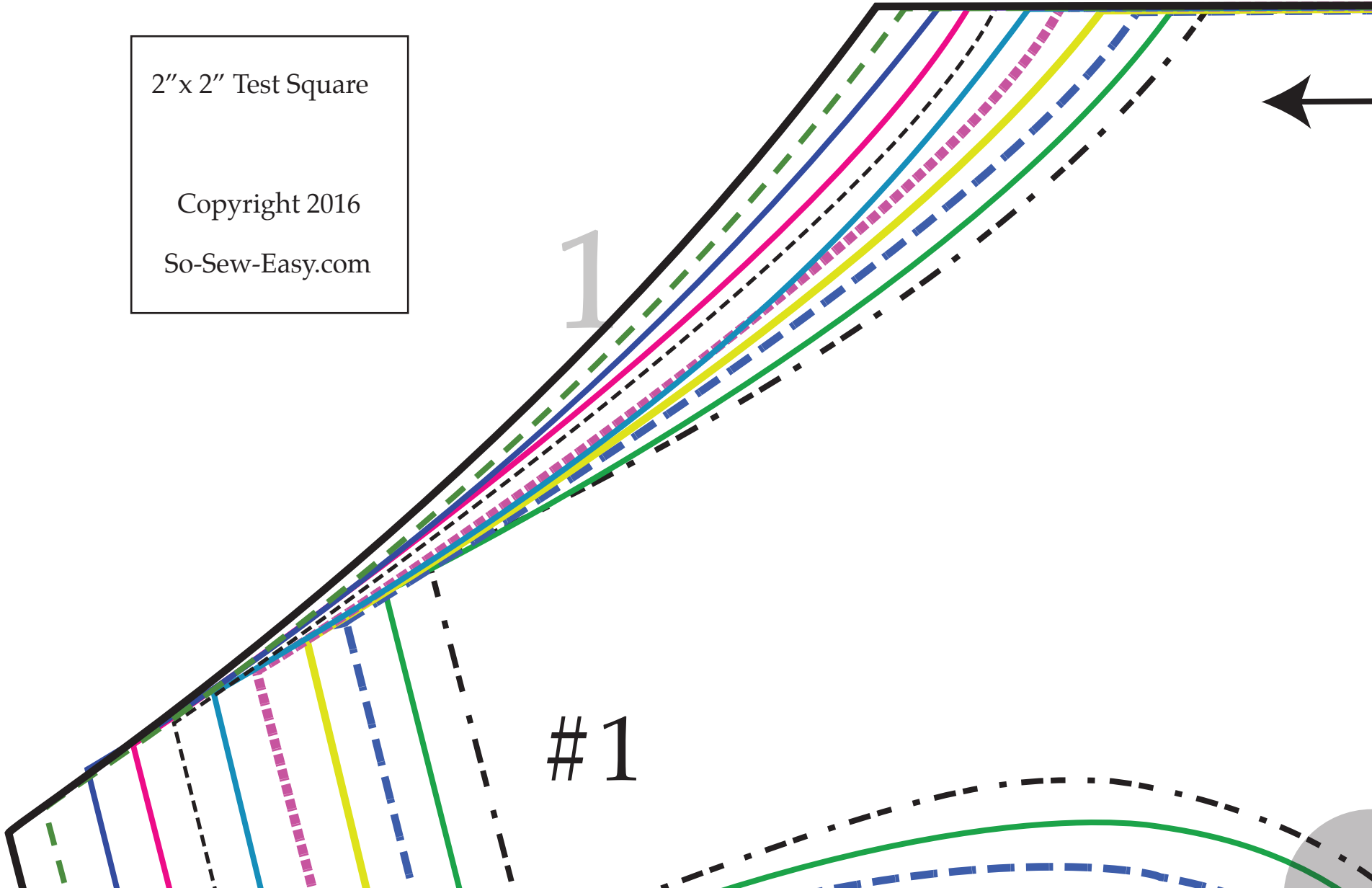
2" x 2" Test Square

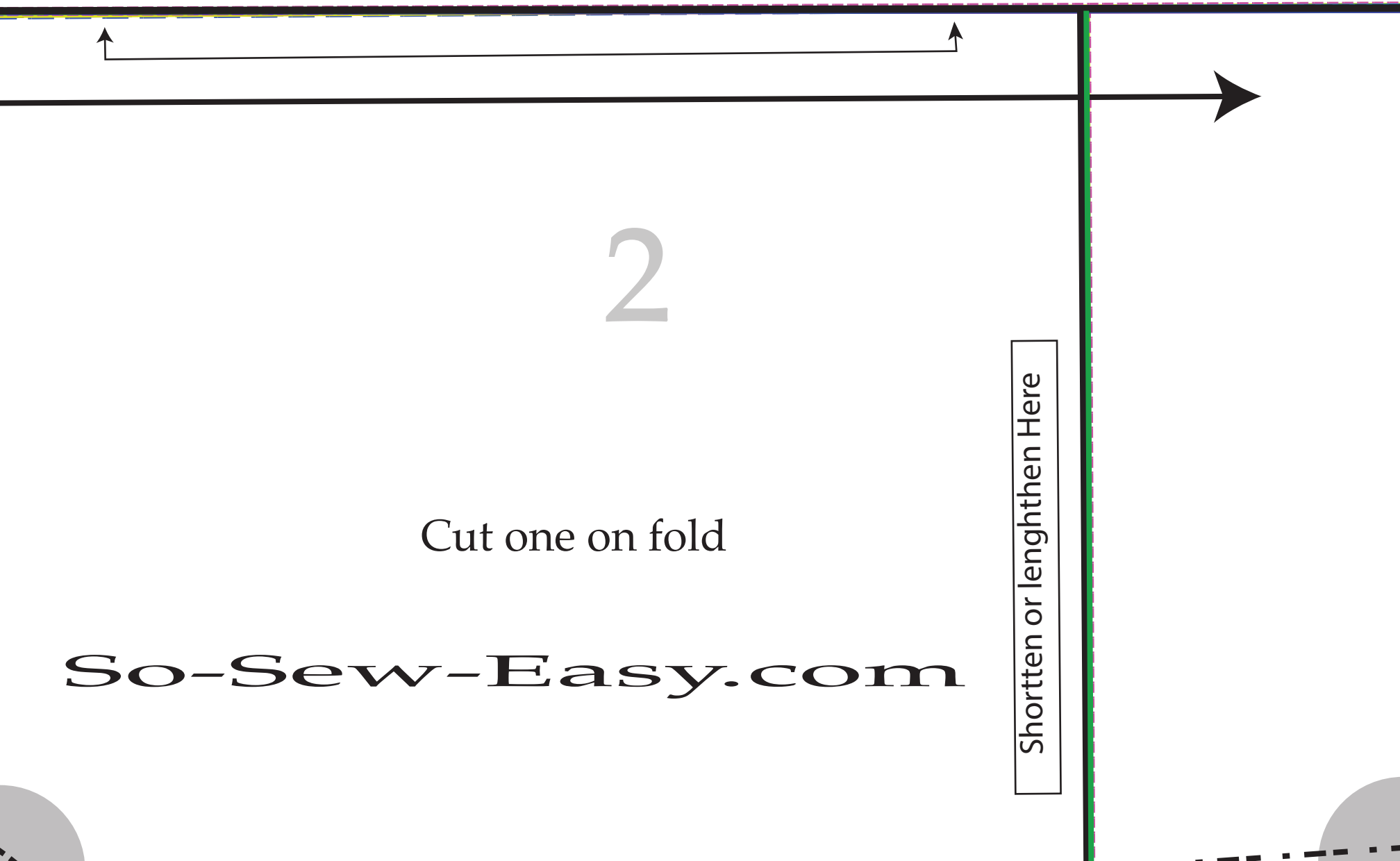
Copyright 2016

So-Sew-Easy.com

1

#1



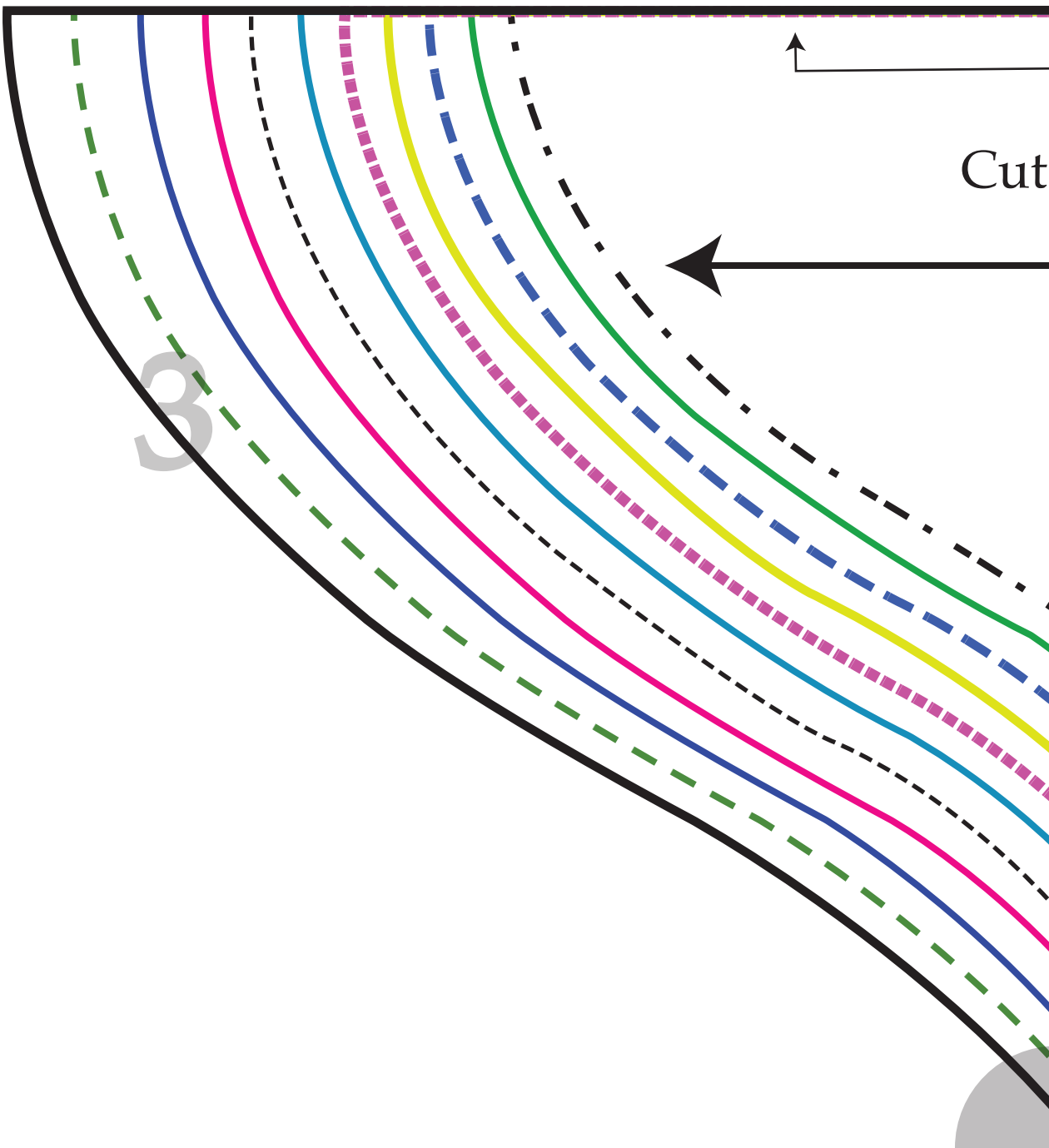


2

Cut one on fold

So-Sew-Easy.com

Shortten or lengthen Here



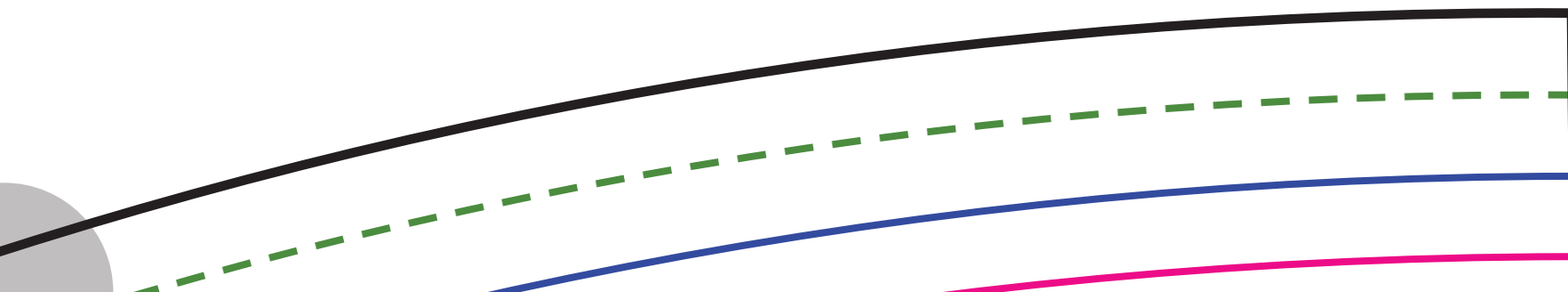
two on fold

Shortten or lengthhen Here

4

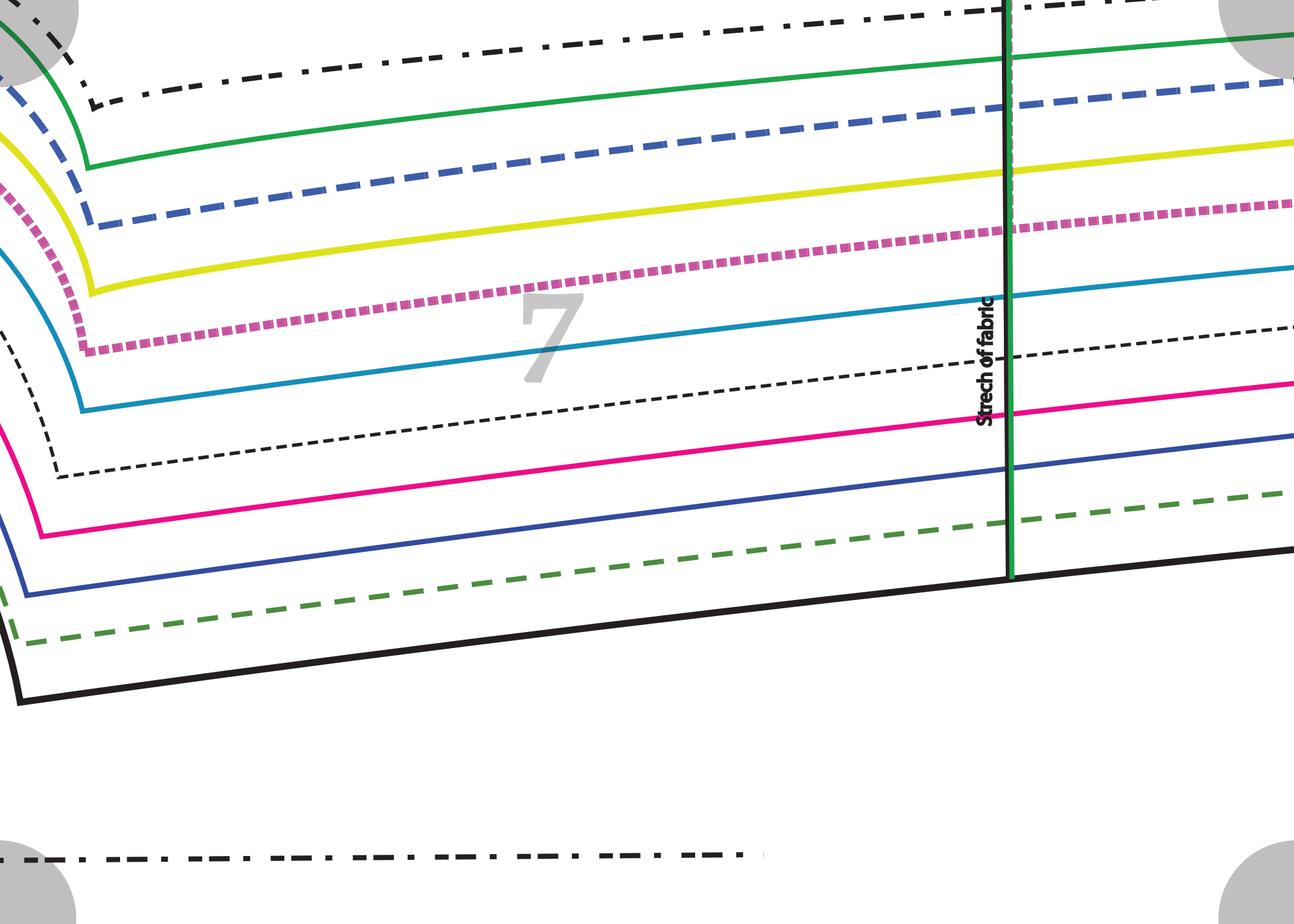
#5 / #6

5

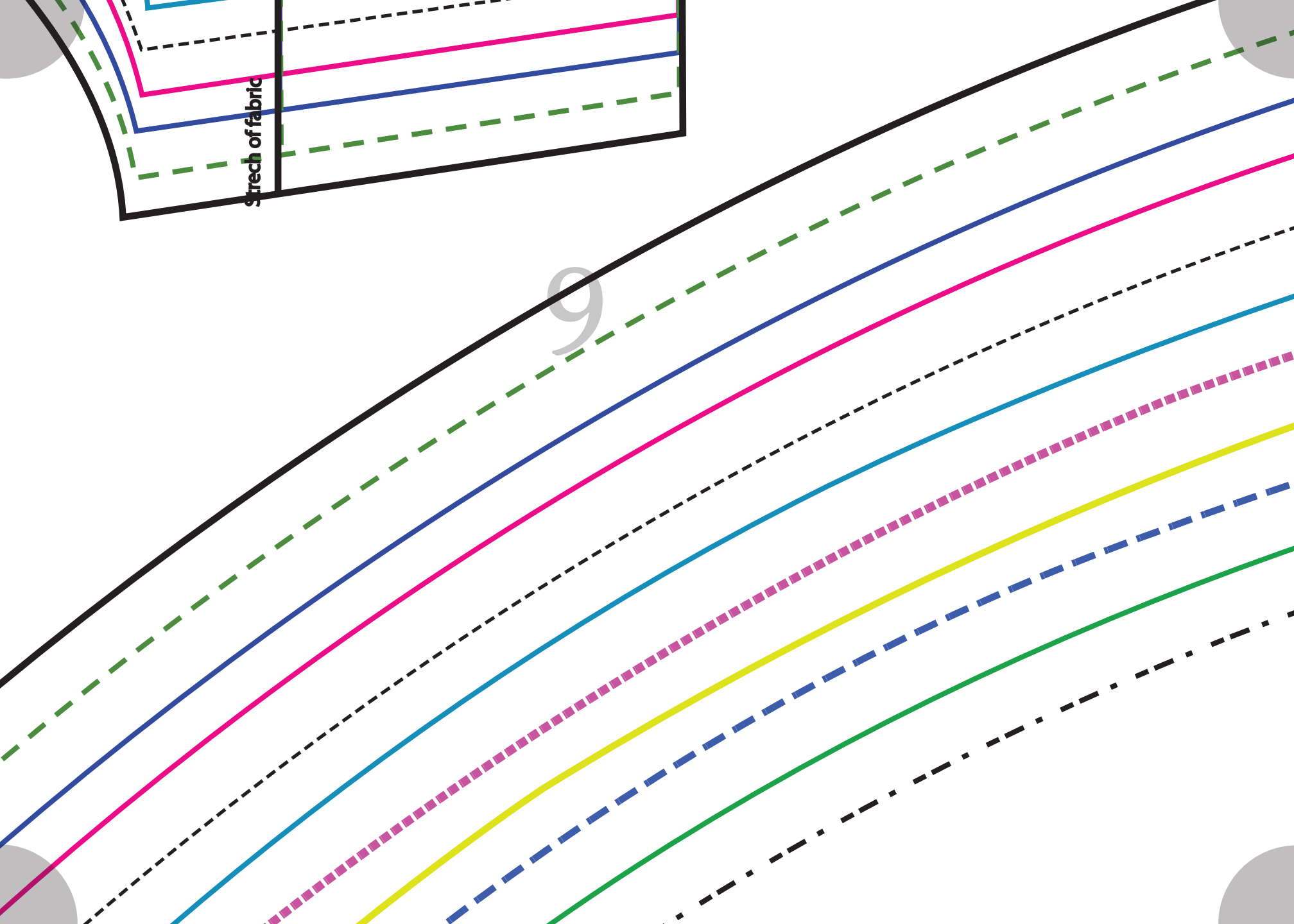


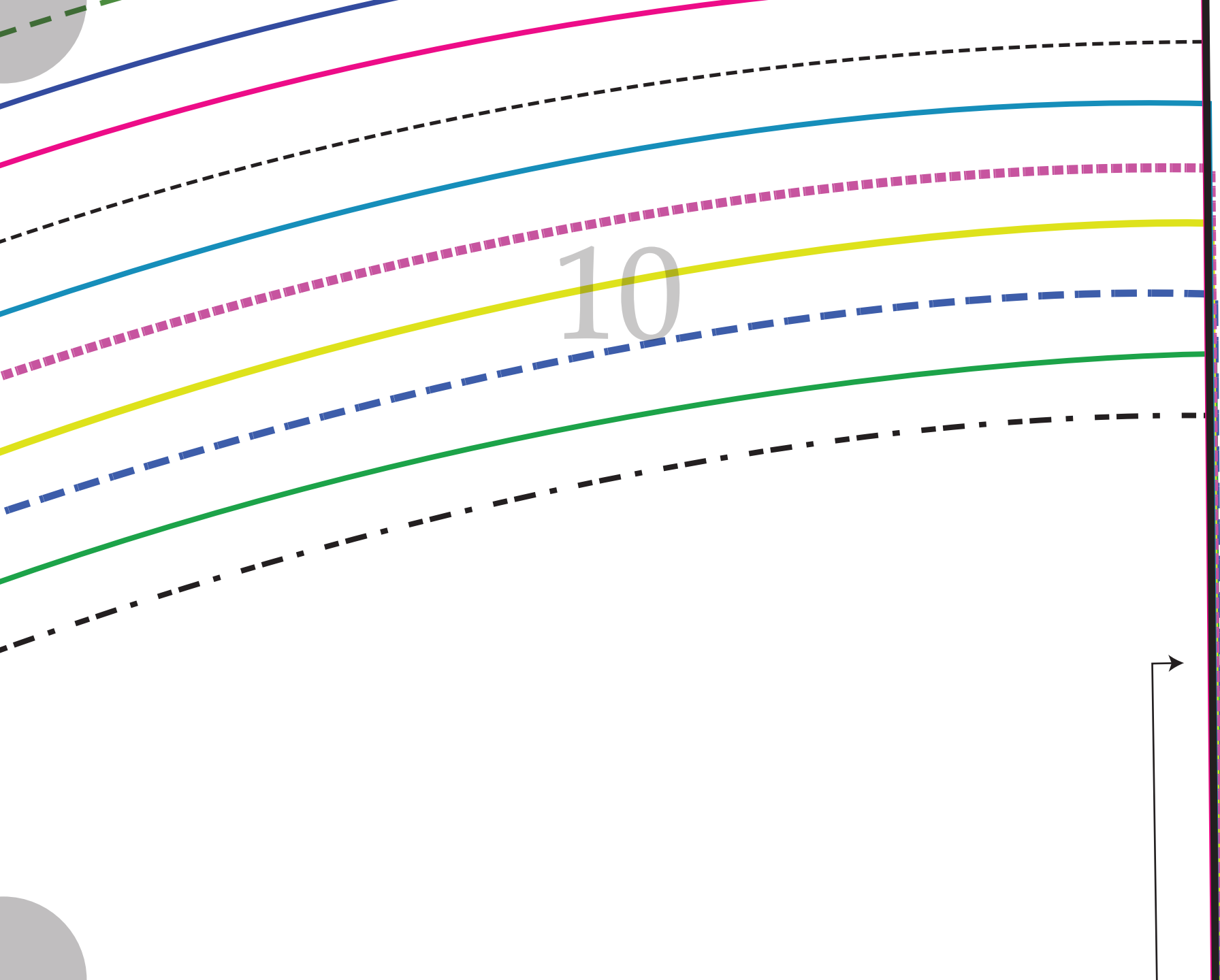
6

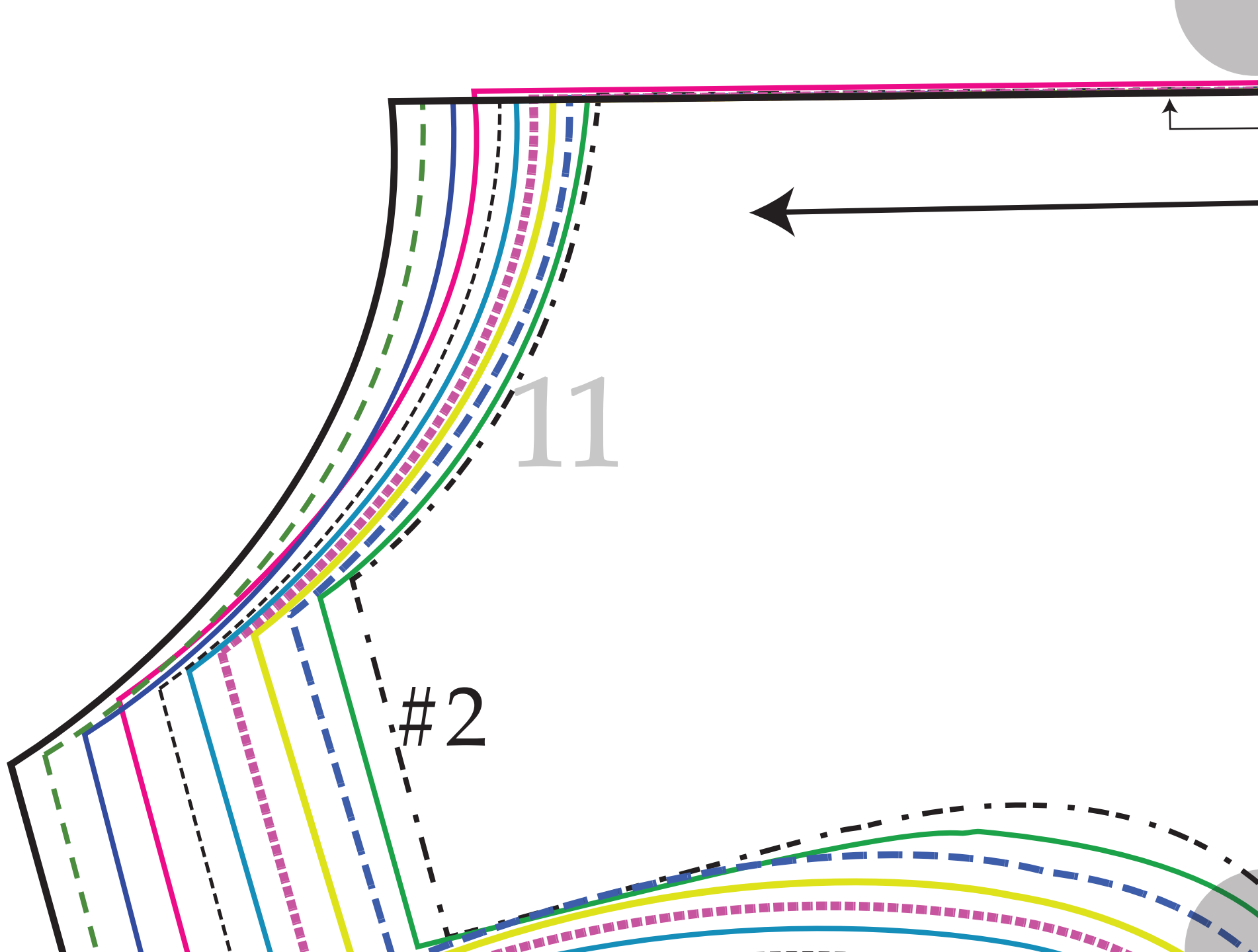




8









12

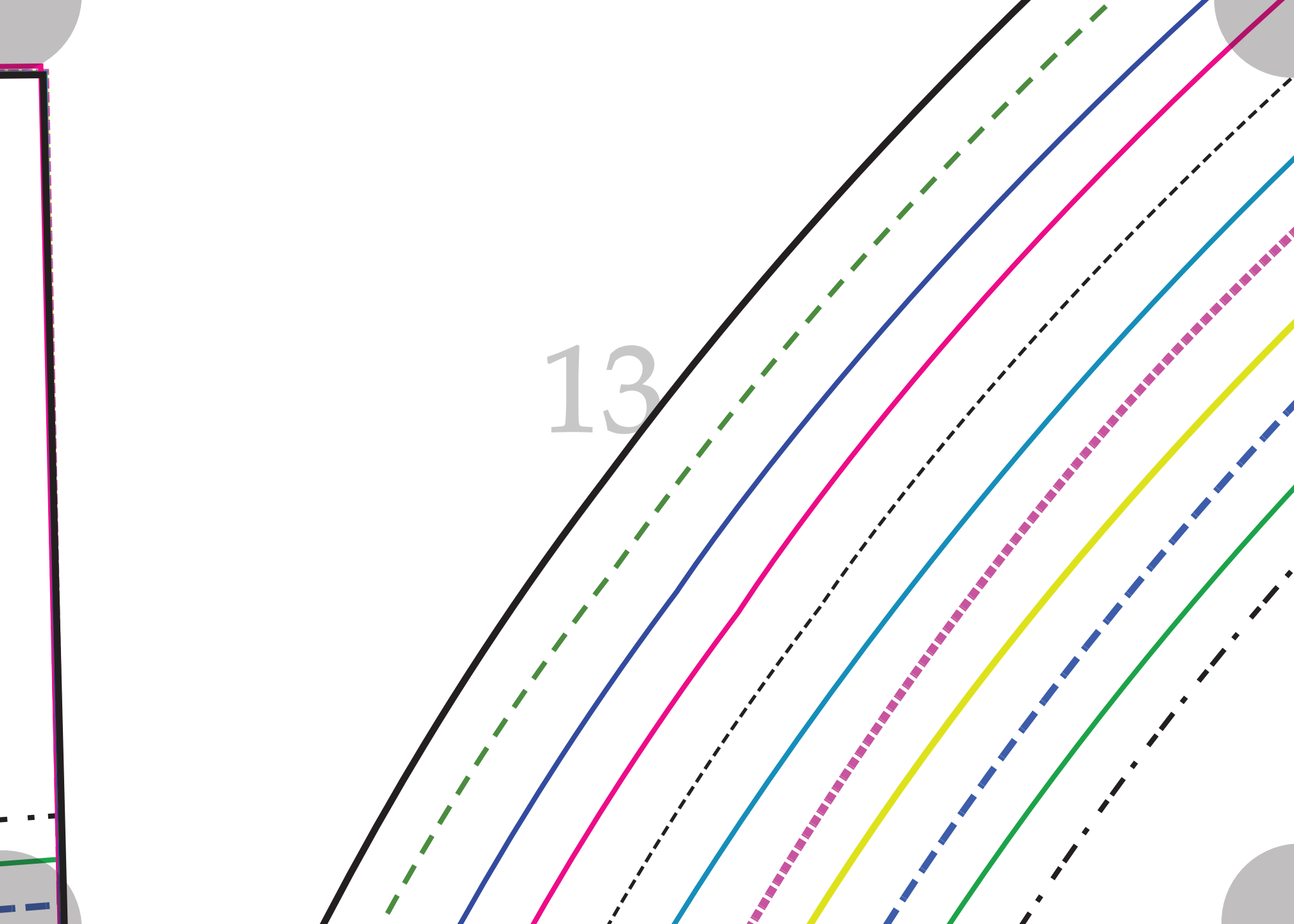
This is a sewing pattern piece for a skirt or similar garment. It features a wide waistband at the top, indicated by a thick pink line. A horizontal arrow points to the right from the left edge, and a vertical arrow points upwards from the waistband line. A vertical green line on the right side marks the hem. A vertical label 'Shortten or lenghthen Here' is positioned next to this line. The pattern piece is labeled '12' in the center. Below the number is the website 'So-Sew-Easy.com' and the instruction 'Cut one on fold'. The bottom edge of the pattern piece is curved and marked with a dashed line. There are decorative grey circles in the corners of the page.

So-Sew-Easy.com

Cut one on fold

Shortten or lenghthen Here

13





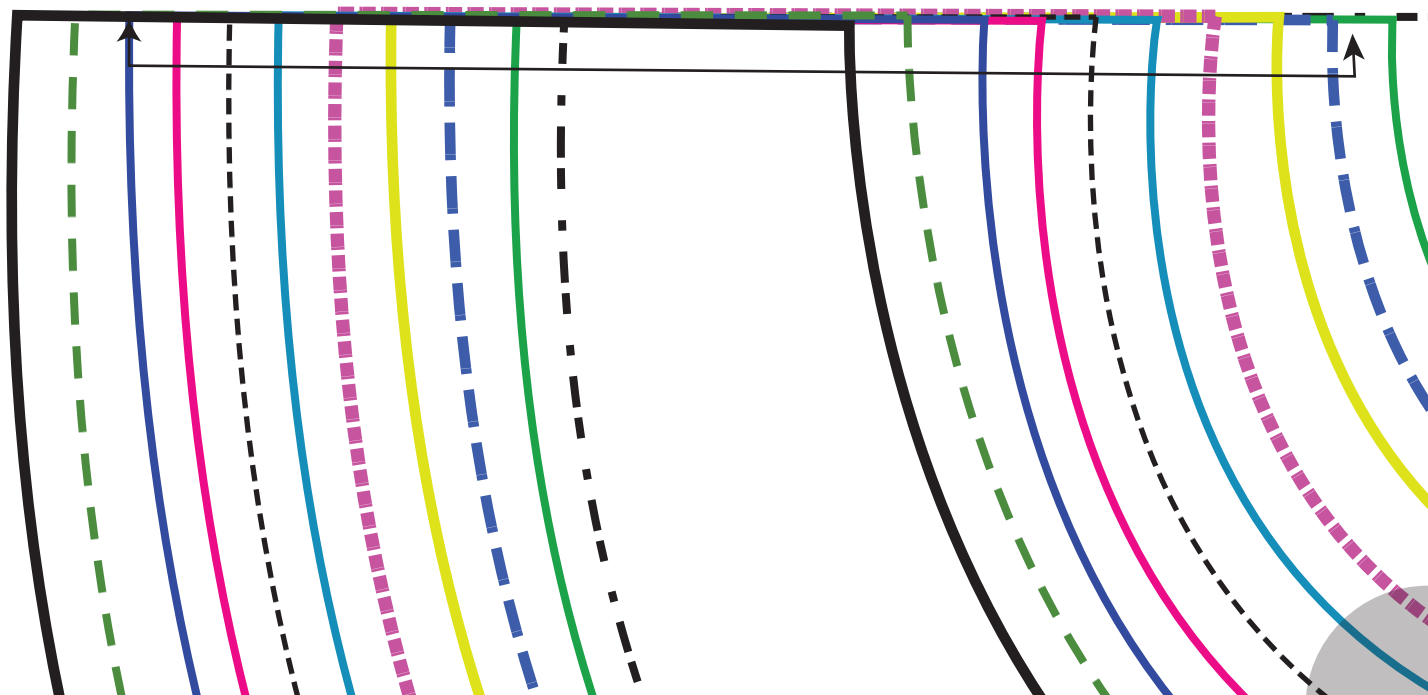
14

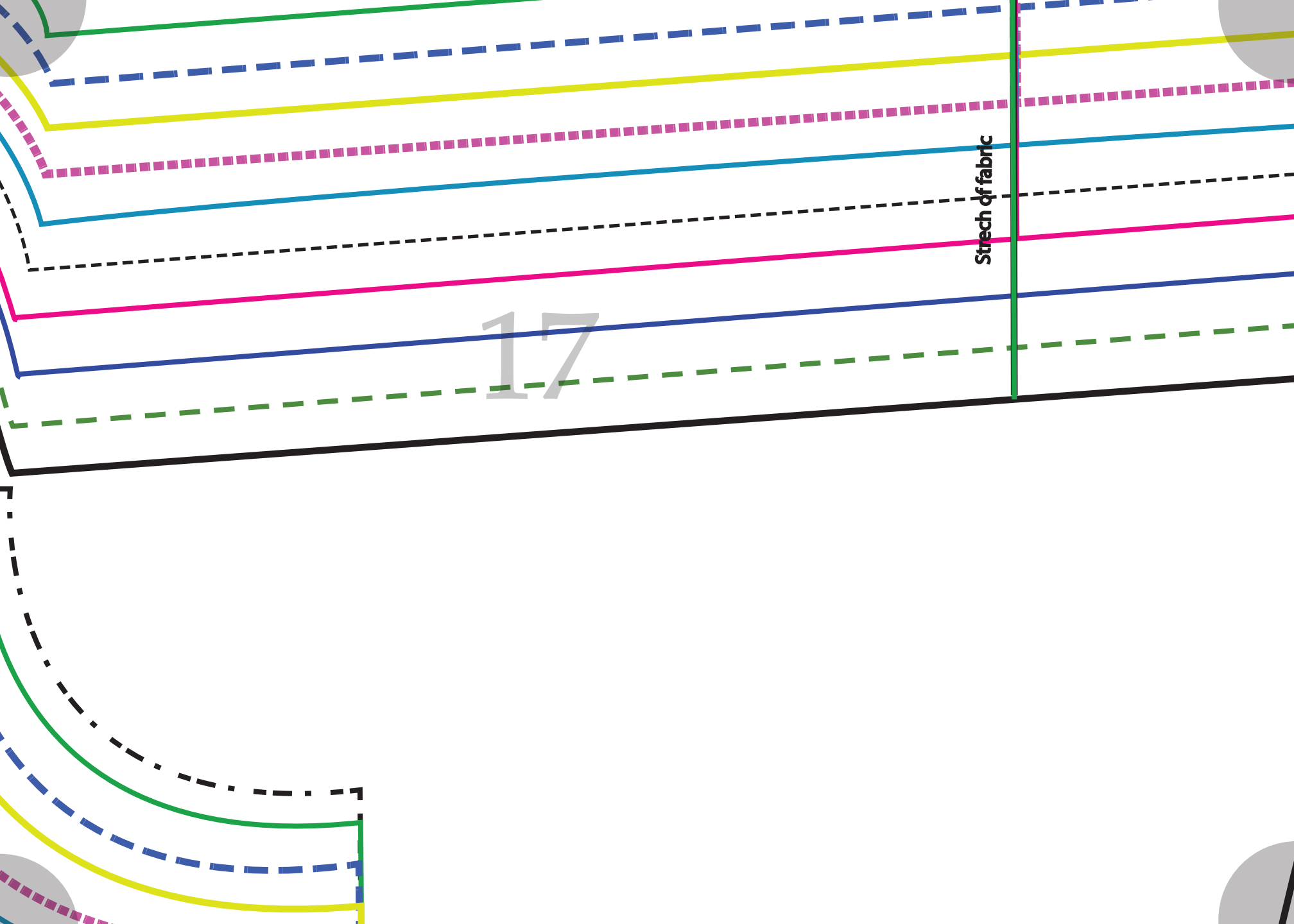
So-Sew-Easy.com

15

•

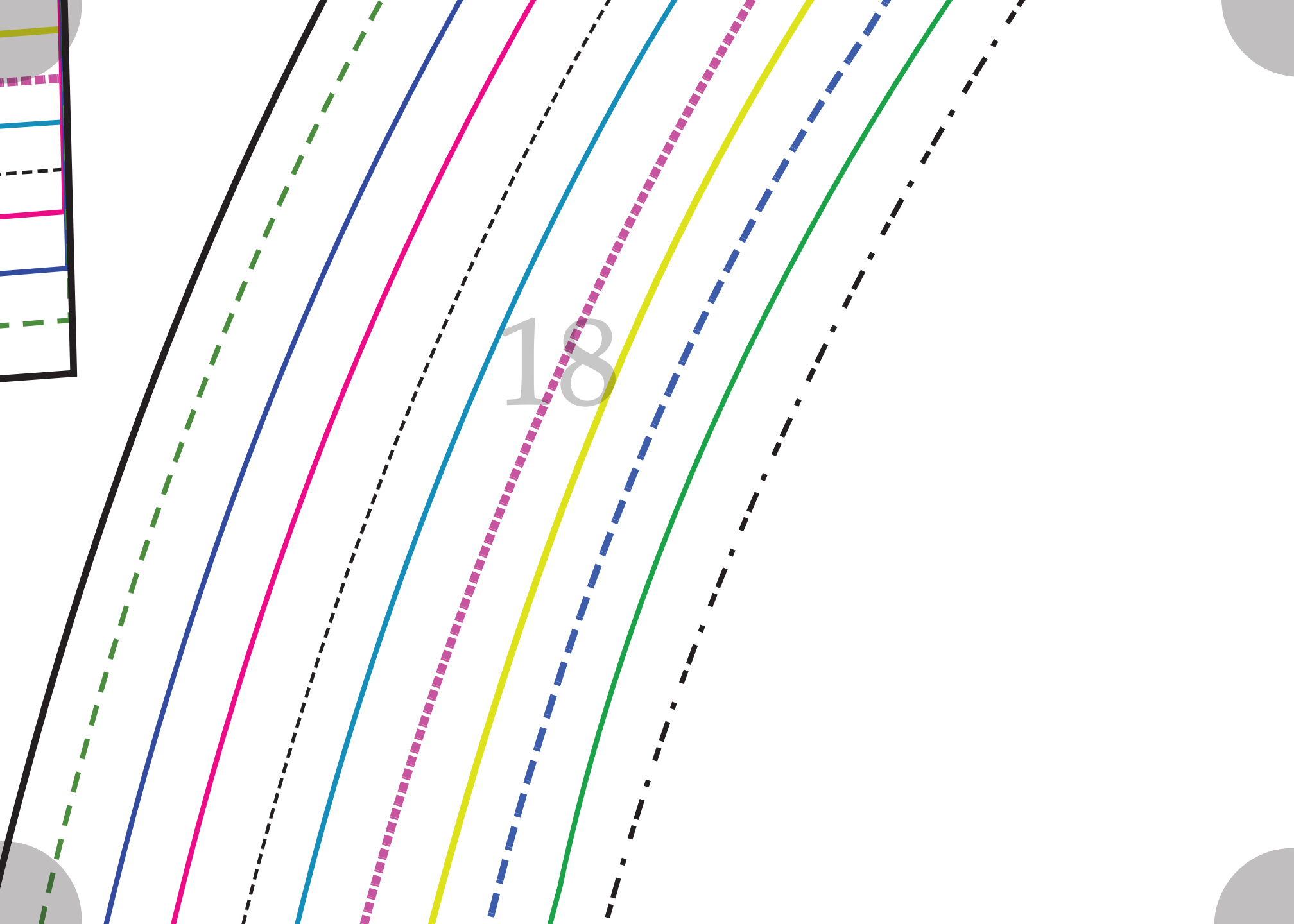
16





17

Stretch of fabric



18

Size 2 — · — — · — —

Size 4 

Size 6 

Size 8

Size 10 

Size 12

Size 14 - - - - -

Size 16

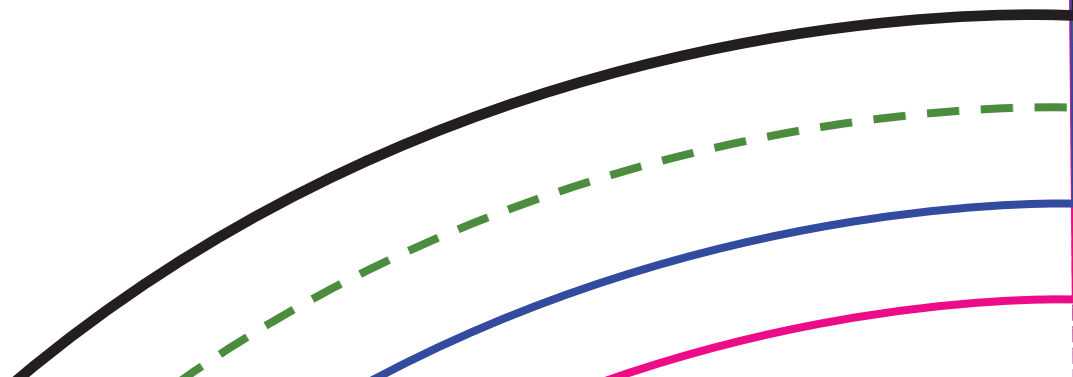
Size 18

Size 20 

Size 22 

20

#3 / #4

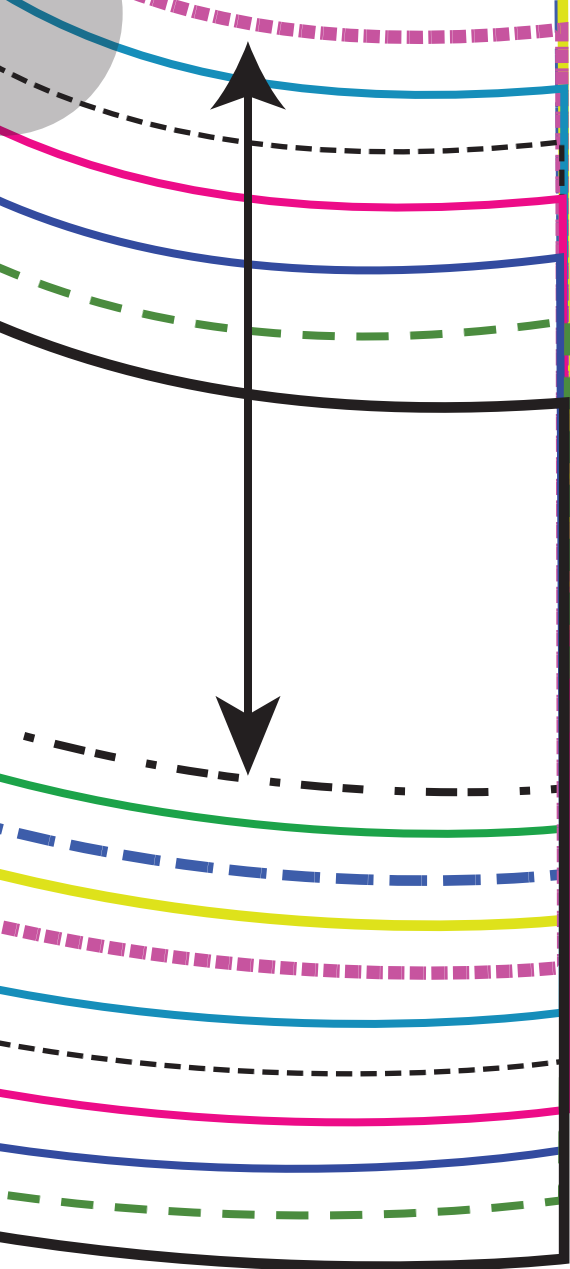




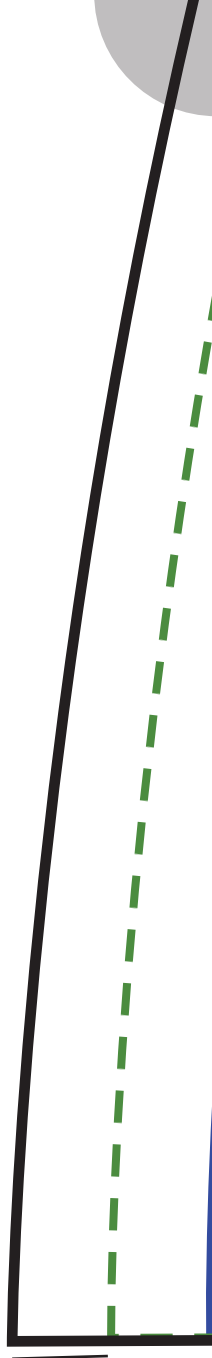
#7 / #8

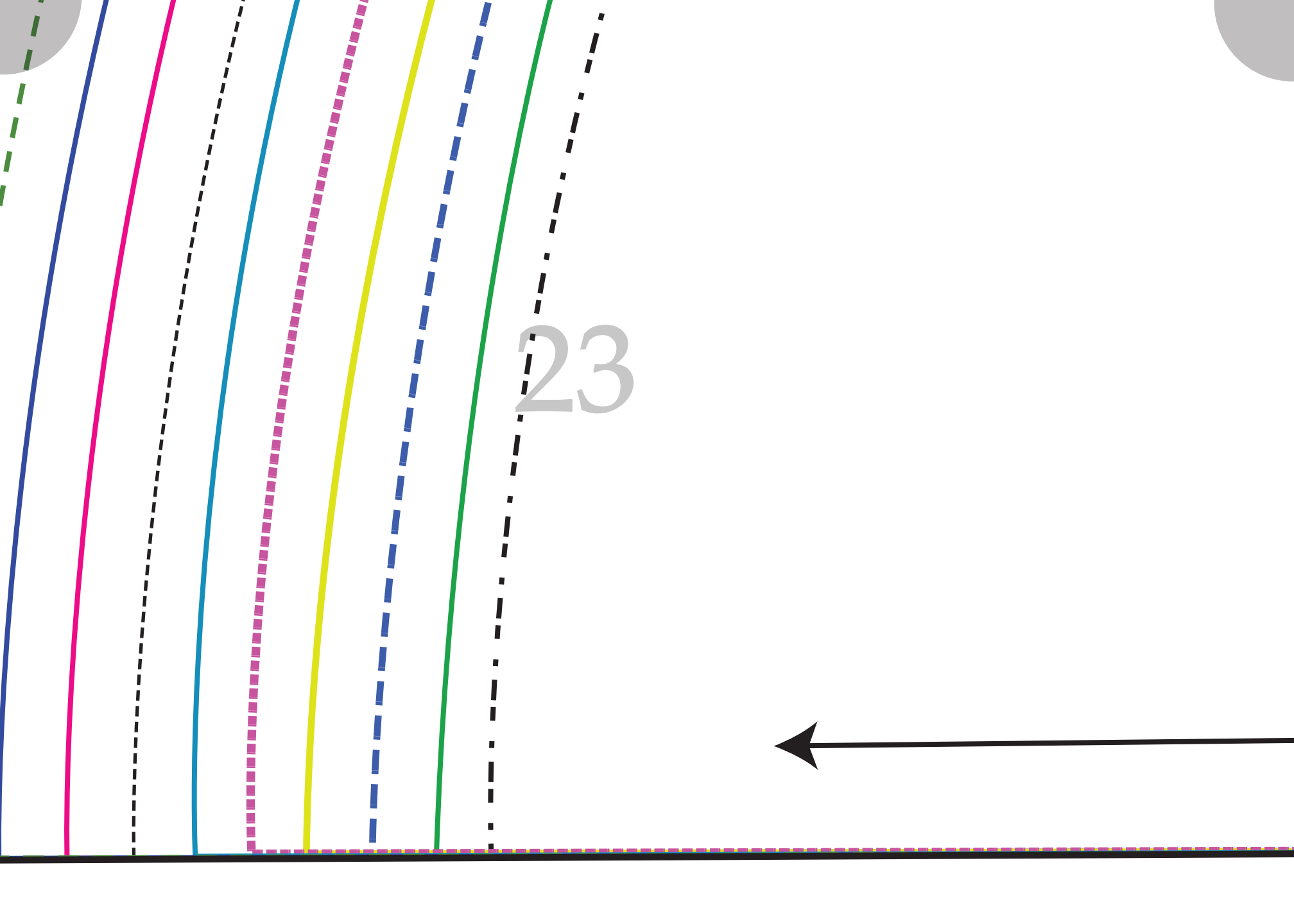
Cut two on fold

21



22





24



