

INTERMEDIATE SEWING PATTERN

# Reversible Baby Booties

for happy feet



DESIGNER SEWING PATTERNS  
FOR BABIES & TODDLERS

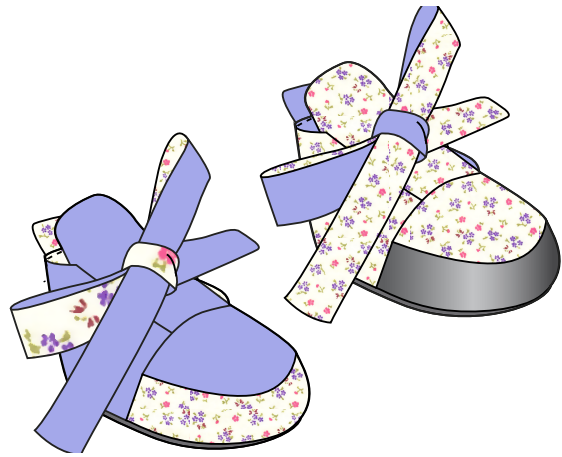
[WWW.MISUSU.CO](http://WWW.MISUSU.CO)



## THANK YOU FOR DOWNLOADING A MISUSU E-PATTERN!

The patterns are designed to be printed at 100%. Before printing the patterns, make sure that page scaling is set to NONE in Adobe Acrobat print window.

Please follow the general directions for the best outcome.



## GENERAL DIRECTIONS

### MATERIALS

For these soft baby booties the following materials were used:

- 100% cotton in purple
- 100% cotton in flower print
- 100% cotton with silver foil print
- 100% cotton jogging fabric for the sole
- Yarn in matching colors

### SIZES

To determine your babies shoe size, please measure your babies feet, by tracing them on a piece of paper. After tracing the feet, measure the length of your babies feet. The length of your babies feet is the shoe size.

In this PDF pattern, the following pattern sizes are provided for:

- Size 9 cm - 3 1/2 inch
- Size 10 cm - 4 inch
- Size 11 cm - 4 1/3 inch
- Size 12 cm - 4 3/4 inch

In general, our patterns are designed to be printed at 100%. To make sure your patterns are printed at 100% you should set the page scaling in your Adobe Acrobat print window to NONE. But if you want to make a smaller or bigger size shoe, you can up- or down scale your pattern in that same print window.

Please note: the smaller the size of your shoe, the bigger the challenge! This pattern comes with a few very small pattern pieces and some technically challenging parts. If you are a confident beginner, I would like to advice you to start with a bigger size.

## GENERAL DIRECTIONS

### CUTTING

Print the pattern pieces and cut out. Up from size 11 the straps (part 7) must be assembled prior to cutting the fabric. Overlap the two pattern pieces at the grey indicated area and tape together.

A 1/5" (5 mm) seam allowance is included.

Piece 2 & 3 must be placed on fabric fold in a bias cut! Please follow the arrows on the pattern parts for fabric directions!

Since this is a pattern for a reversible shoe, you can be creative with the inside & outside. But to make things more clear, in the sewing instructions I will refer to the floral fabric as the lining.

Cut the fabric according the cutting lines.

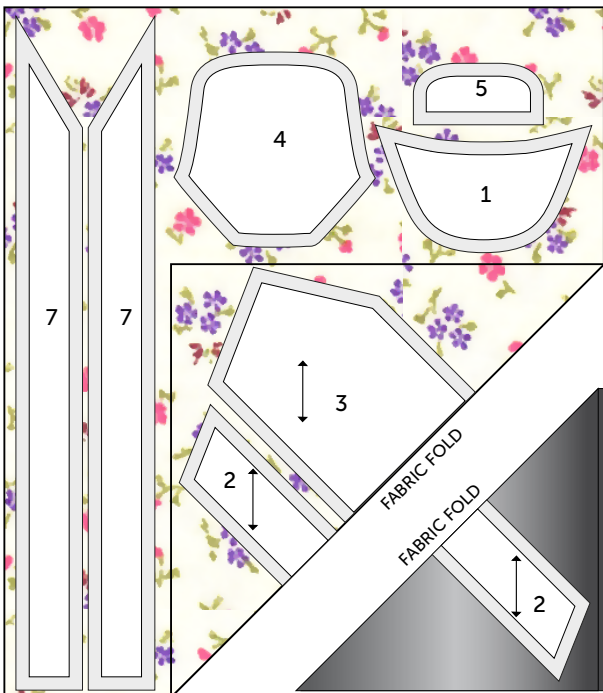
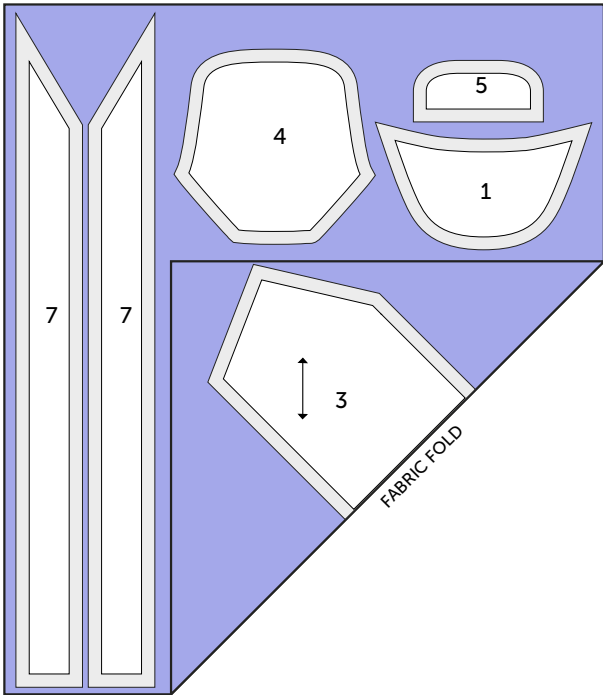
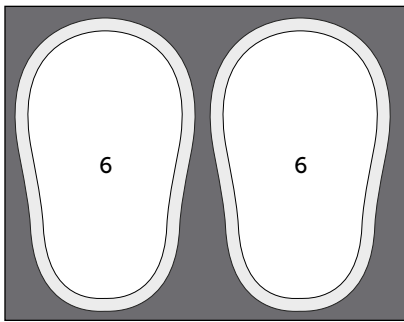
Suggested cutting layouts for the different felt/fabric colors are provided below (as were used for these booties).

### CUTTING LAYOUT (FOR ONE SHOE!!!)

PATTERN PIECES FOR ONE SHOE: (PAGES 10-14)

1. Nose of shoe (1x purple & 1x floral lining)
2. Nose sole of shoe (1x floral & 1x silver lining)
3. Shoe body (1x purple & 1x floral lining)
4. Tongue flap (1x purple & 1x floral lining)
5. Heel flap (1x purple & 1x floral lining)
6. Sole (2x for lining and outside)
7. Straps (mirror imaged 2x purple & 2x floral lining)

Cut the same amount of parts for the other shoe.

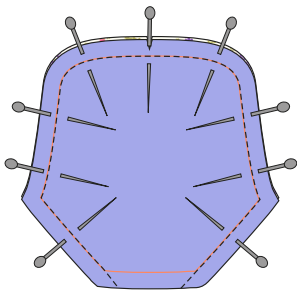


## SEWING INSTRUCTIONS

Cut all the necessary pattern parts in the colors of your choice. Determine what will be your lining. I will refer to the floral parts as the lining, just to make things more clear.

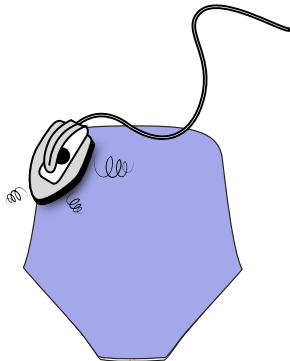
Draw lines with a 5mm (1/5") width from the edges of the fabric with fabric chalk (orange lines in drawings). Follow these lines for stitching.

①



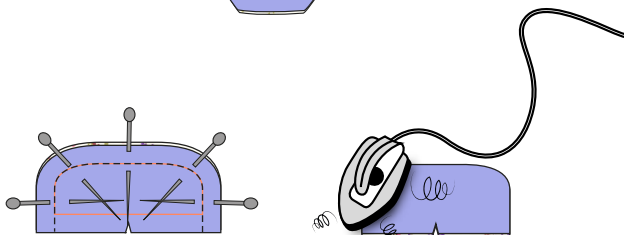
1. Pin outside tongue flap (4) to lining tongue flap (floral). Topstitch the parts together in a 5mm seam along the chalk line. Leave bottom part open.

②



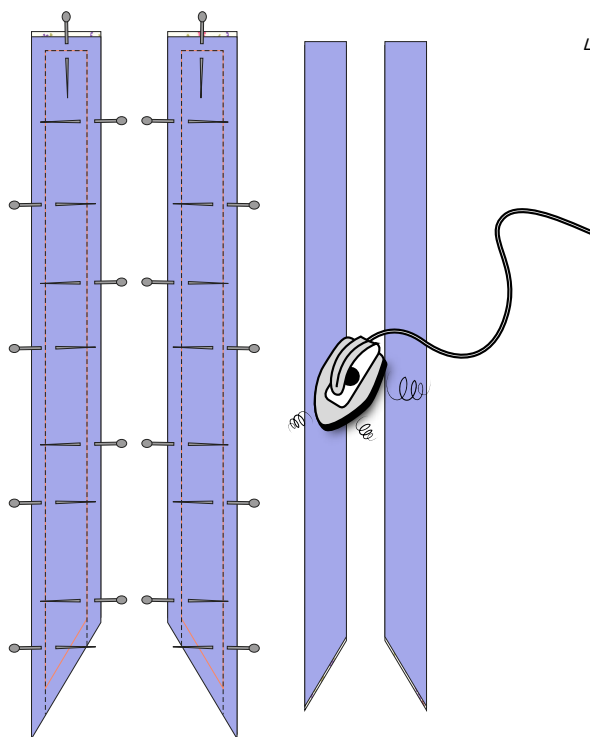
2. Turn tongue flap inside out, so the seams are at the inside. The bottom part is still open. Press with an iron.

③

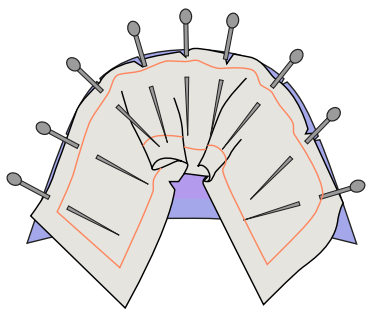


3. Pin outside heel flap (5) to lining heel flap (floral). Topstitch together in a 5mm seam along the chalk line. Leave bottom part open. Turn flap inside out, so the seams are on the inside. Press with an iron.

④

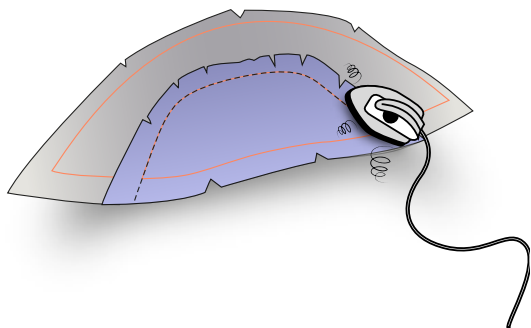


4. Pin outside straps (7) to lining straps (floral). Topstitch together in a 5mm seam along the chalk lines. Leave bottom part open. Turn straps inside out, so the seams are on the inside. Press both straps with an iron.



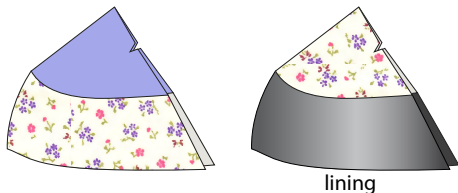
5

5. Make sure nose sole part (2) is bias cut!  
Pin floral nose sole part (2) to outside nose part (1). Stitch together in a 5mm seam along the chalk line.



6

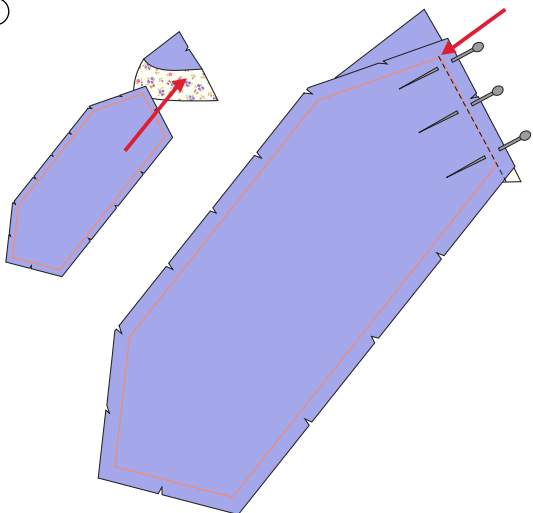
6. Press the seam allowance towards nose sole (2).



lining

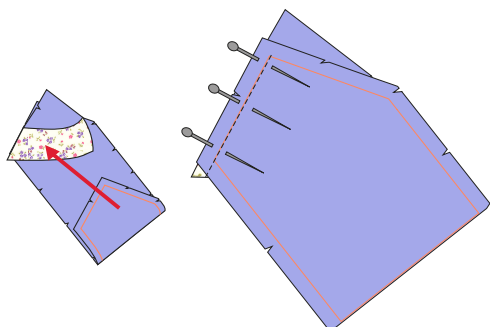
7. Your nose part should look like this now (left). Repeat step 5 & 6 with silver lining nose sole part (2) and floral lining nose part (1). Also, make sure lining part 2 is bias cut.

7



8. Make sure body part (3) is bias cut!  
Pin outside body part (3) with one side to the outside nose part (1&2). Make sure to carefully place the corner (marked in this drawing with an arrow) to the cutting marking on the outside nose part (1) (see little detail) with a pin. Stitch together in a 5 mm seam along the chalk line, starting at the pin corresponding to the cutting marking.

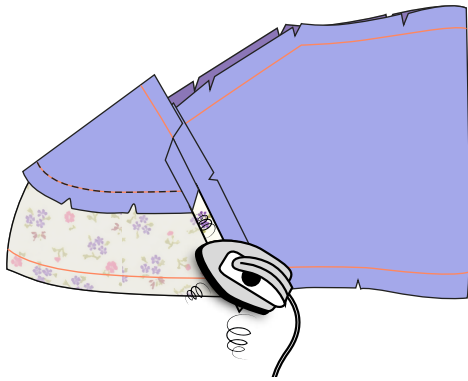
8



9. Now, pin the other side of outside body part (3) to the other outside nose part (1&2). You basically fold part 3 to the other side. Repeat step 8 for this side also.

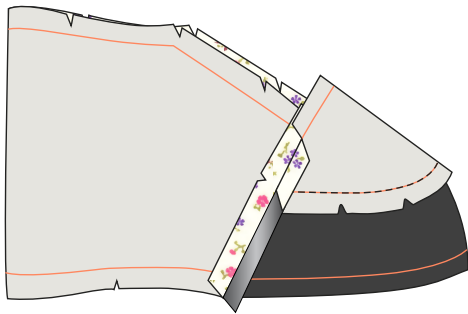
9

10



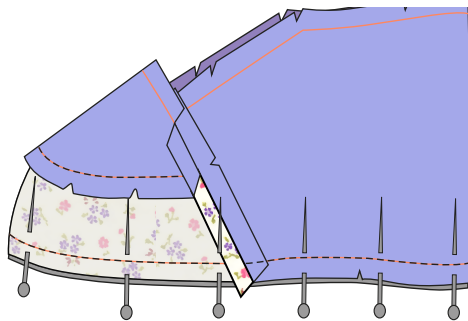
10. So far, your shoe should look like this. Press the seam allowance of both sides of the shoe.

11



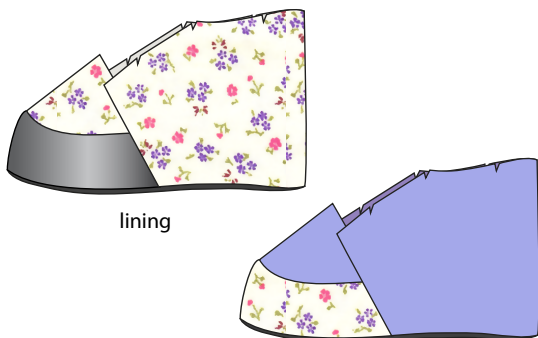
11. Repeat steps 8 to 10 with floral lining body part (3) and floral/silver lining nose sole part (1&2). Again, make sure lining body part (3) is bias cut.

12



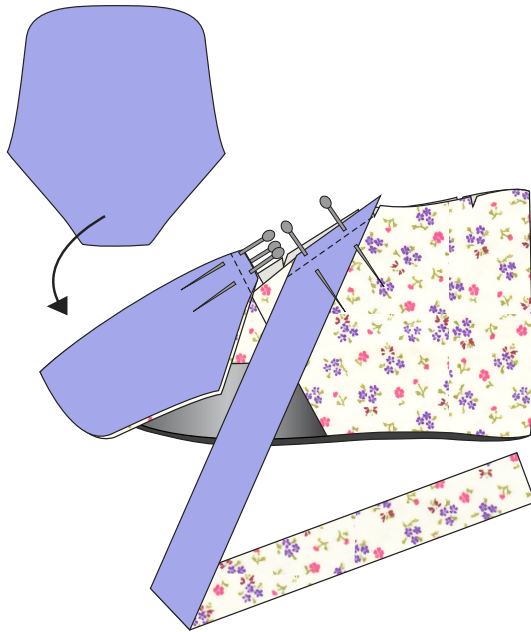
12. Pin sole part (6) to the outside body (1,2&3) with the good sides facing each other. Make sure to match the cutting markings of the sole to the cutting markings of the body. Stitch sole to body in a 5 mm stitch, along the chalk line.

13



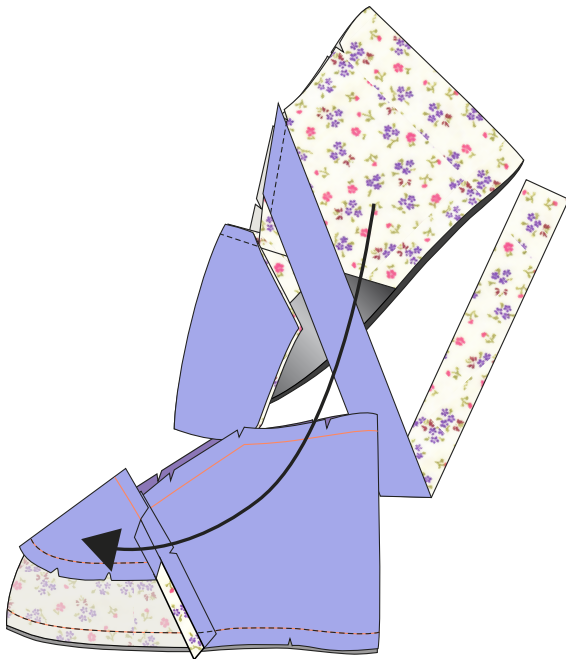
13. Repeat step 12 with floral lining body and lining sole. Turn inside out, so seams are at the inside. Your outside & lining part should look like this.





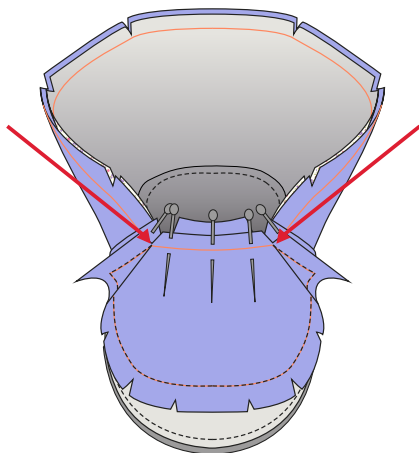
14

14. Take the shoe lining and pin tongue part 4 to the lining body, with the floral lining fabrics facing each other. The tongue should fit right between the cutting markings of floral lining nose part (1). Stitch tongue to shoe lining in a 5mm seam. Pin the straps (7) according the cutting markings to the lining body, with the floral lining fabrics facing each other. Stitch the straps to lining shoe body in a 5 mm seam.



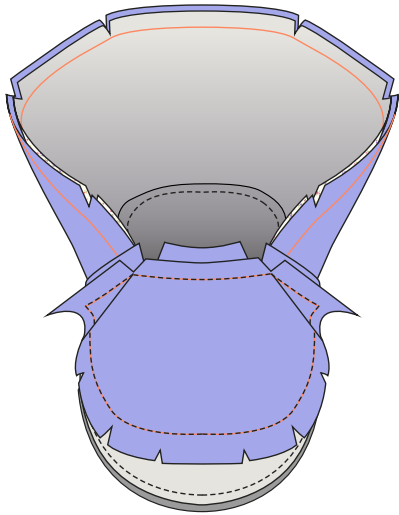
15

15. Okay, here comes the tricky part!  
Take the outside part of the shoe and turn it inside out, so the seams are facing out. Take the floral lining part of the shoe and 'wrestle' it into to outside part of the shoe. This is a bit of a challenge, because of the straps and the tongue. Make sure the straps and the tongue are put in as well,



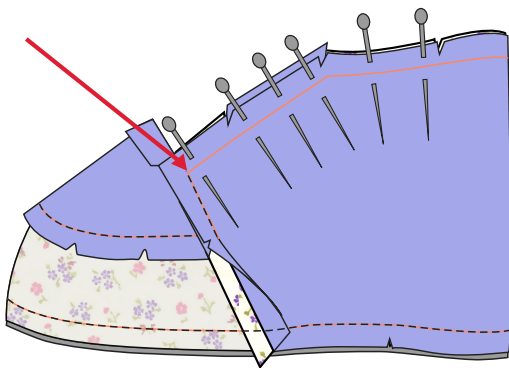
16

16. Now you've put the lining shoe part into the outside shoe part. Pin the outside part to the inside part along the tongue seam. Make sure to pin the seam allowances to the back, so they won't be in your way.  
Make sure the corners of the tongue seam and the partition seams (marked with red arrows) of the outside shoe are on the same spot as the inside shoe. Carefully pin the corners of the two layers together.



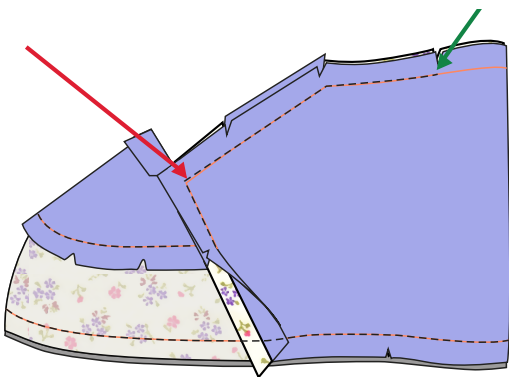
17. Topstitch the two layers of the outside and lining shoe together along the tongue seam in a 5 mm seam.

17



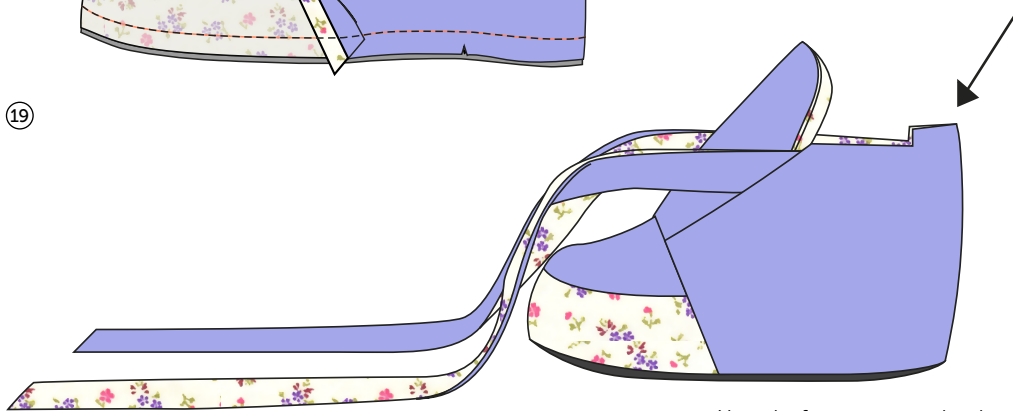
18. Now fold the seam allowances to the front so the starting position of the next seam (marked with red arrow) is nice and visible. Carefully pin the outside shoe to the inside lining shoe.

18



19. Stitch the top seam from the red arrow until cutting markings (marked with a green arrow). Do this for both sides of the shoe.

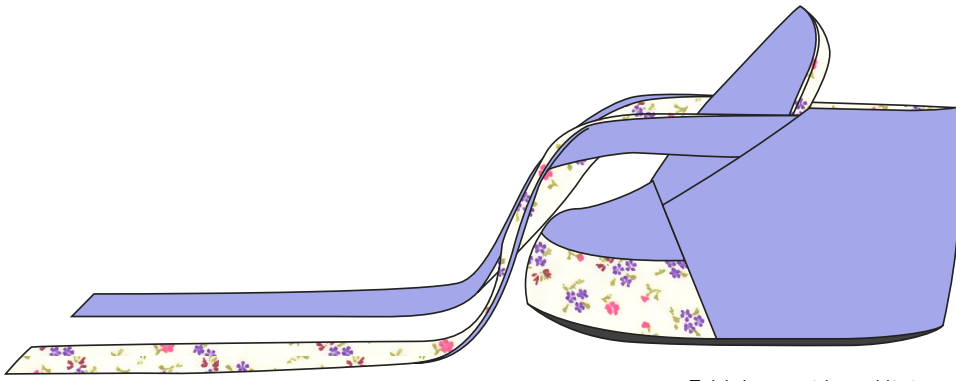
19



20. Now the fun part: turn the shoe "outside in" through the opening at the heel of the shoe. All the seams are at the inside now, and your straps and tongue are nicely finished. Now your shoe is almost ready, hang in there!

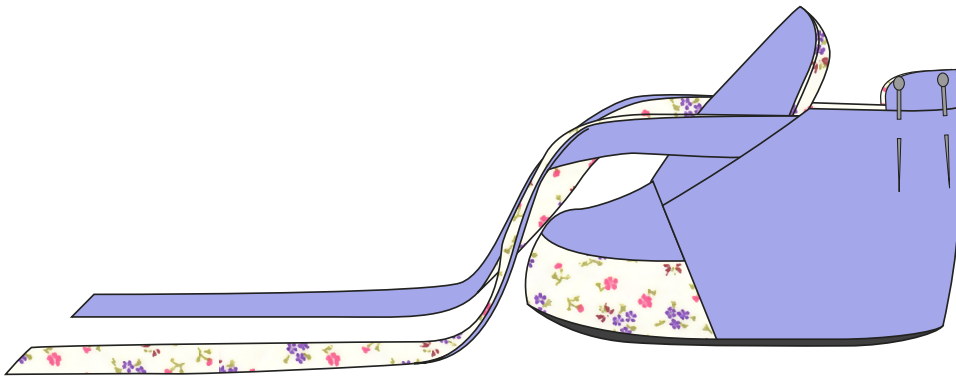
20





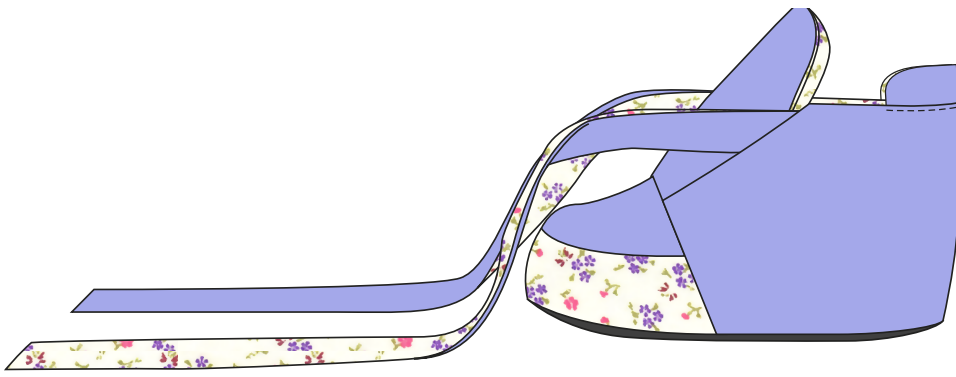
21

21. Fold the outside and lining seam of the heel part to the inside.



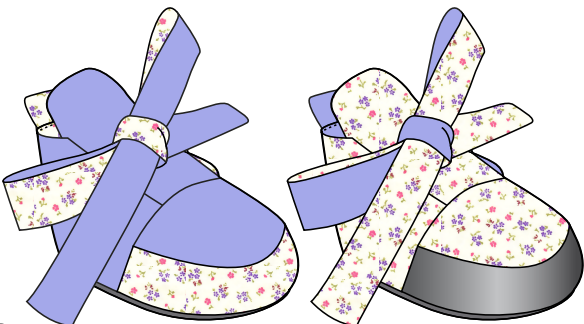
22

22. Put the heel flap (5) in the opening and pin together.



23

23. Close the heel opening with heel flap in a topstitch along the edge of the opening.



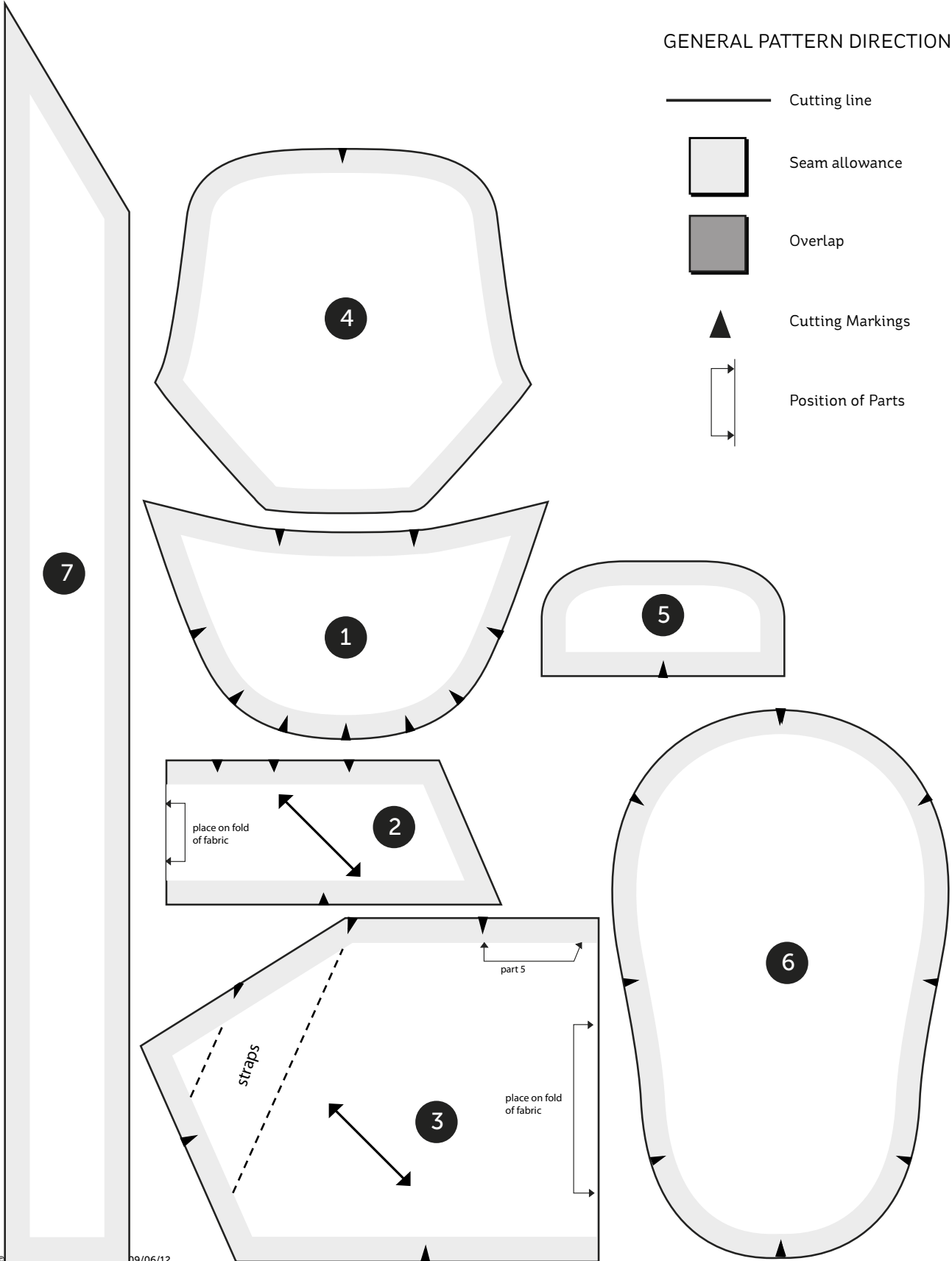
24

24. Your shoe is finished! Repeat steps 1 to 24 for the other shoe!

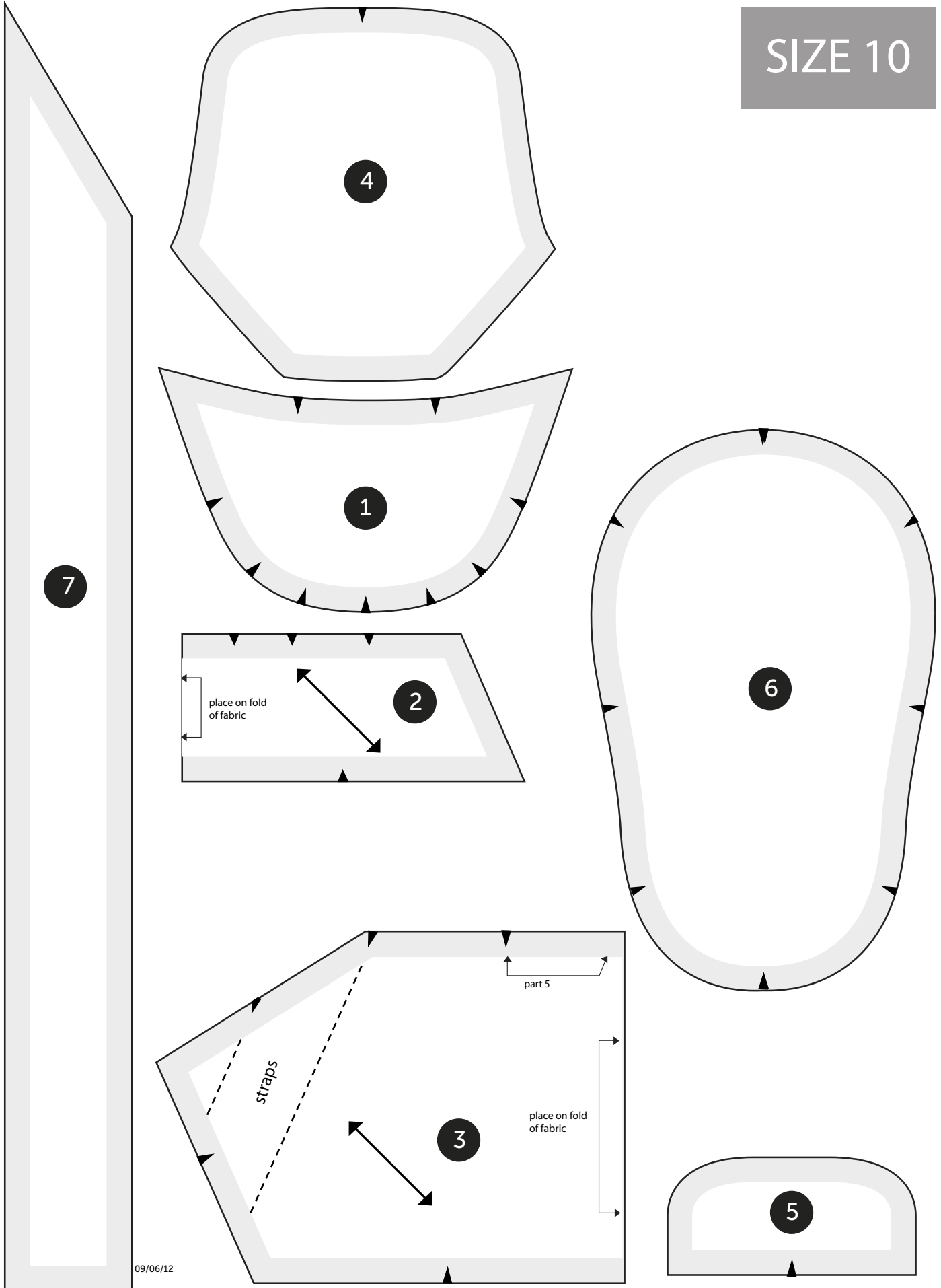
SIZE 9

GENERAL PATTERN DIRECTIONS:

- Cutting line
- Seam allowance
- Overlap
- ▲ Cutting Markings
- ⇄ Position of Parts

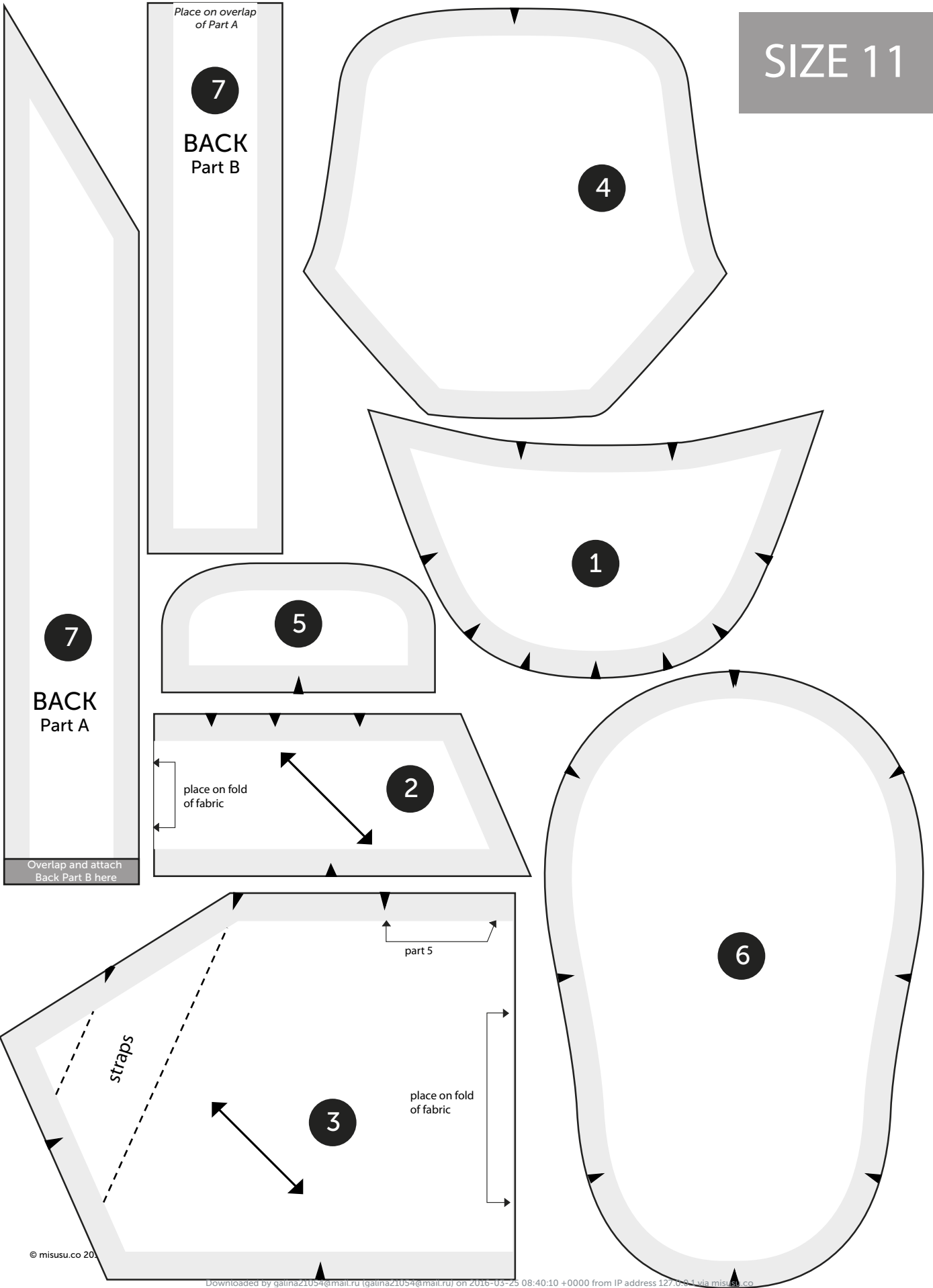


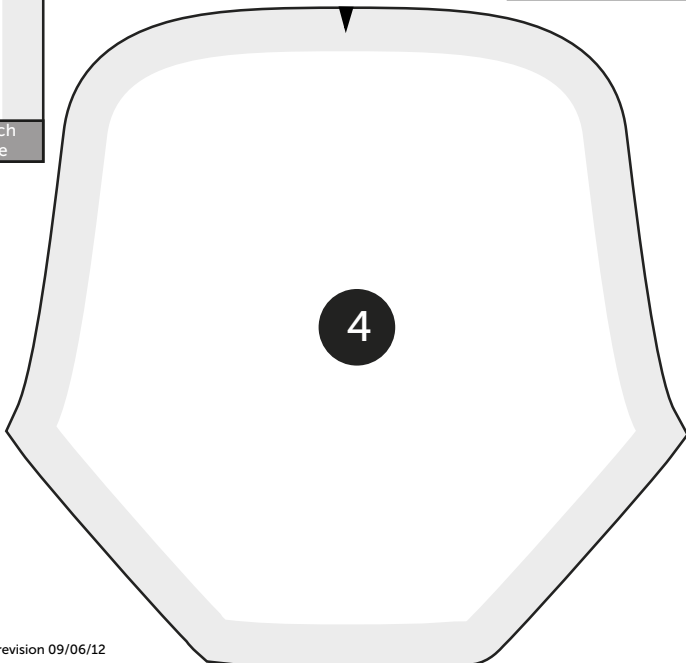
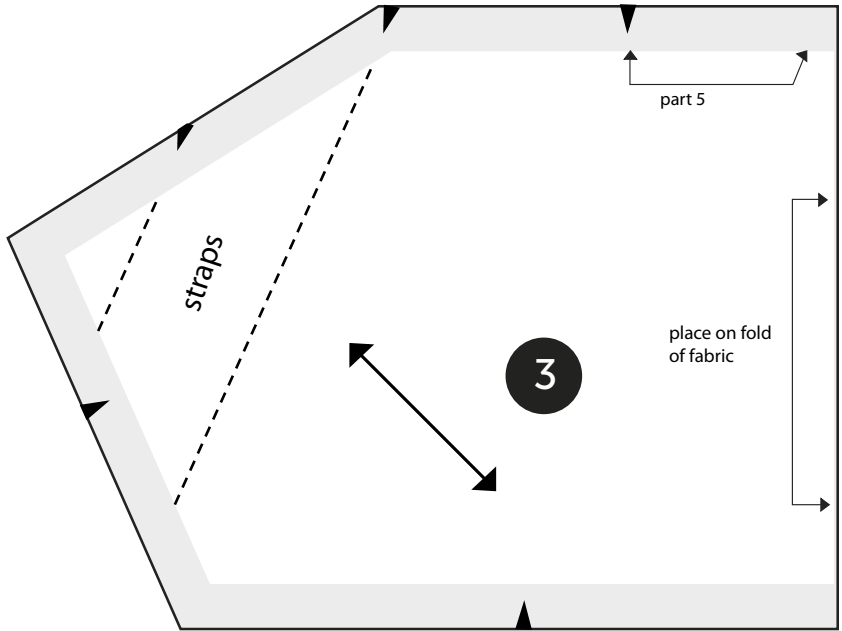
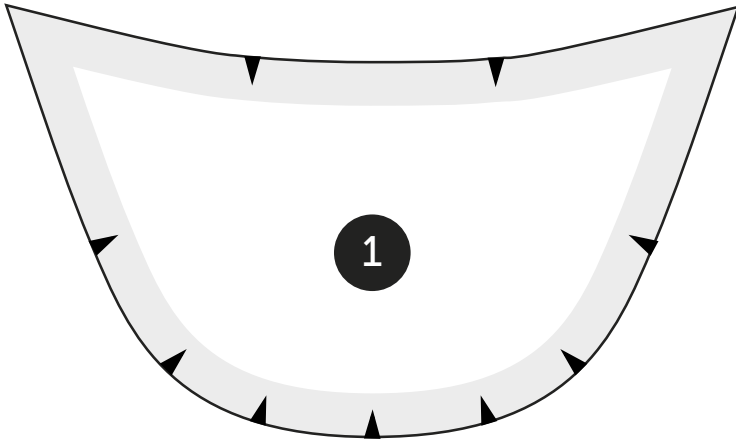
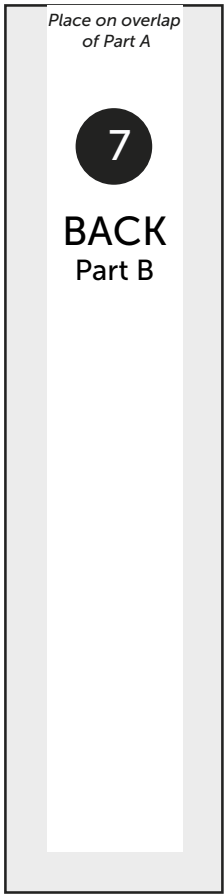
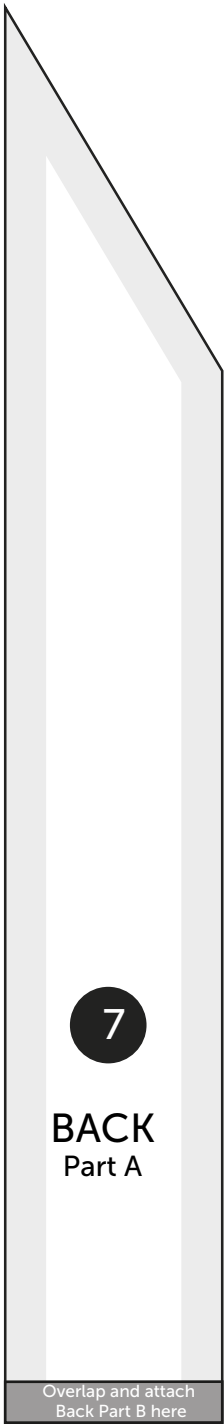
SIZE 10



09/06/12

SIZE 11





SIZE 12

page 2 of 2

