

Proud Lady by Kayomi

☒	DMC 646 Dark Beaver Gray
◻	DMC 935 Dark Avocado Green
◉	DMC 500 Very Dark Blue Green
+	DMC 310 Black
■	DMC 838 Very Dark Beige Brown
◱	DMC 936 Very Dark Avocado Green
●	DMC 413 Dark Pewter Gray
⊠	DMC 3799 Very Dark Pewter Gray
◊	DMC 3021 Very Dark Brown Gray
◼	DMC 434 Light Brown
◻	DMC 610 Dark Drab Brown
◉	DMC 3790 Ultra Dark Beige Gray
⊕	DMC 3012 Medium Khaki Green
◻	DMC 3726 Dark Antique Mauve
◻	DMC 3740 Dark Antique Violet
↑	DMC 3860 Cocoa
△	DMC 612 Light Drab Brown
⊠	DMC 451 Dark Shell Gray
◼	DMC 3041 Medium Antique Violet
⊠	DMC 3861 Light Cocoa
⊥	DMC 3782 Light Mocha Brown
▼	DMC 524 Very Light Fern Green
⊠	DMC 3864 Light Mocha Beige
◼	DMC 842 Very Light Beige Brown
◻	DMC 452 Medium Shell Gray
◻	DMC 453 Light Shell Gray
◻	DMC 3856 Ultra Very Light Mahogany
→	DMC 3024 Very Light Brown Gray
⊠	DMC 3354 Light Dusty Rose
◻	DMC 211 Light Lavender
⊠	DMC 754 Light Peach
▨	DMC 818 Baby Pink

* To work out the size of the finished article, take the number of stitches and divide it by the count of your fabric (e.g 14,16,18 count aida etc) to get the size in inches. Times it by 2.5 to get centimetres.

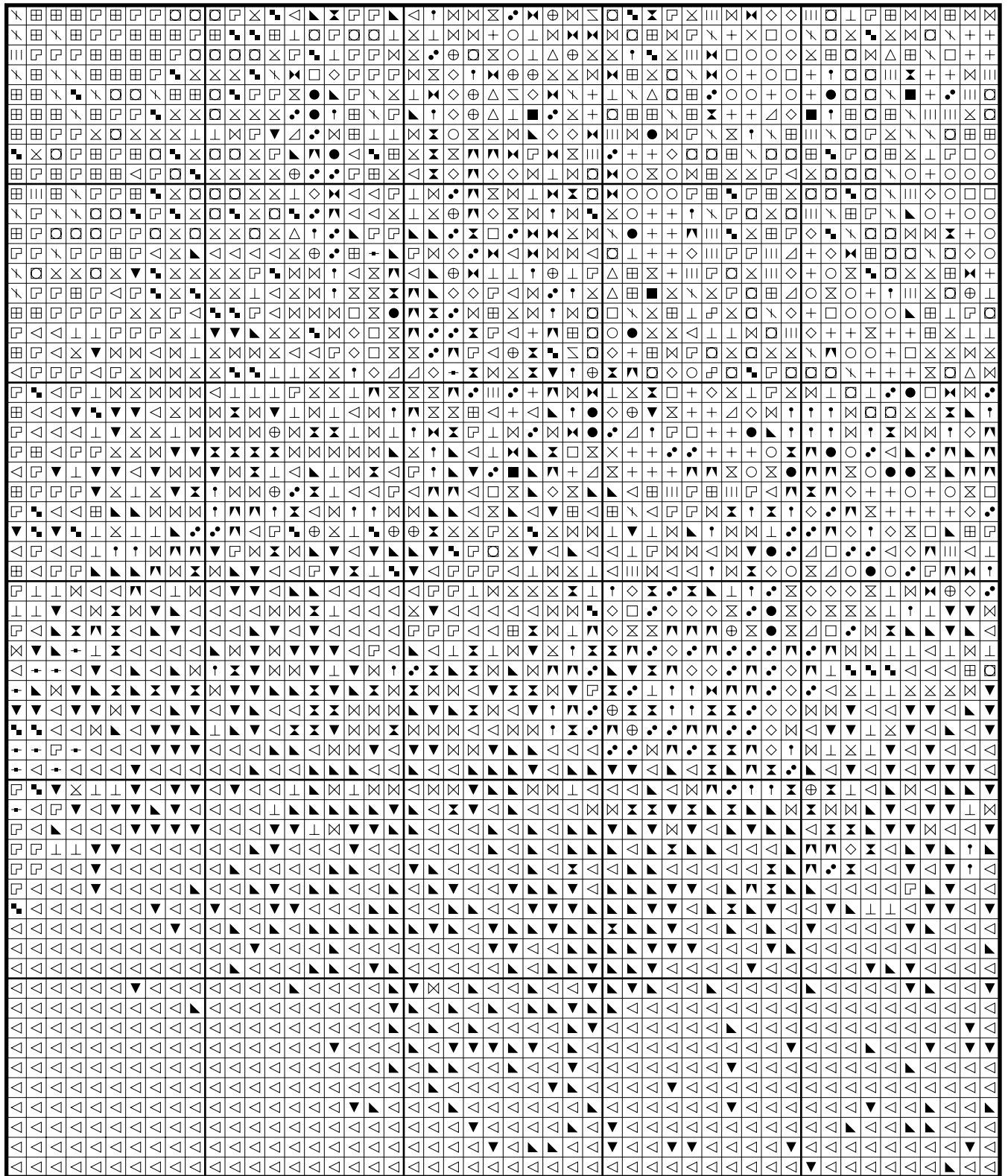
* PLEASE NOTE: Our patterns are printed in a grid showing 10 x 10 stitches in each box. You may notice that the pages that run vertical have a maximum number of 9 rows at the top or bottom of a page. You are not missing a row or rows of stitches, this is the way our patterns print. It allows us to have larger print for your symbols.

* You should begin at the centre of the pattern which has been marked by a circle for you. To find the centre of the pattern it is just a matter of counting the vertical and horizontal stitches and divide them by half. Where the two points meet that is the centre.

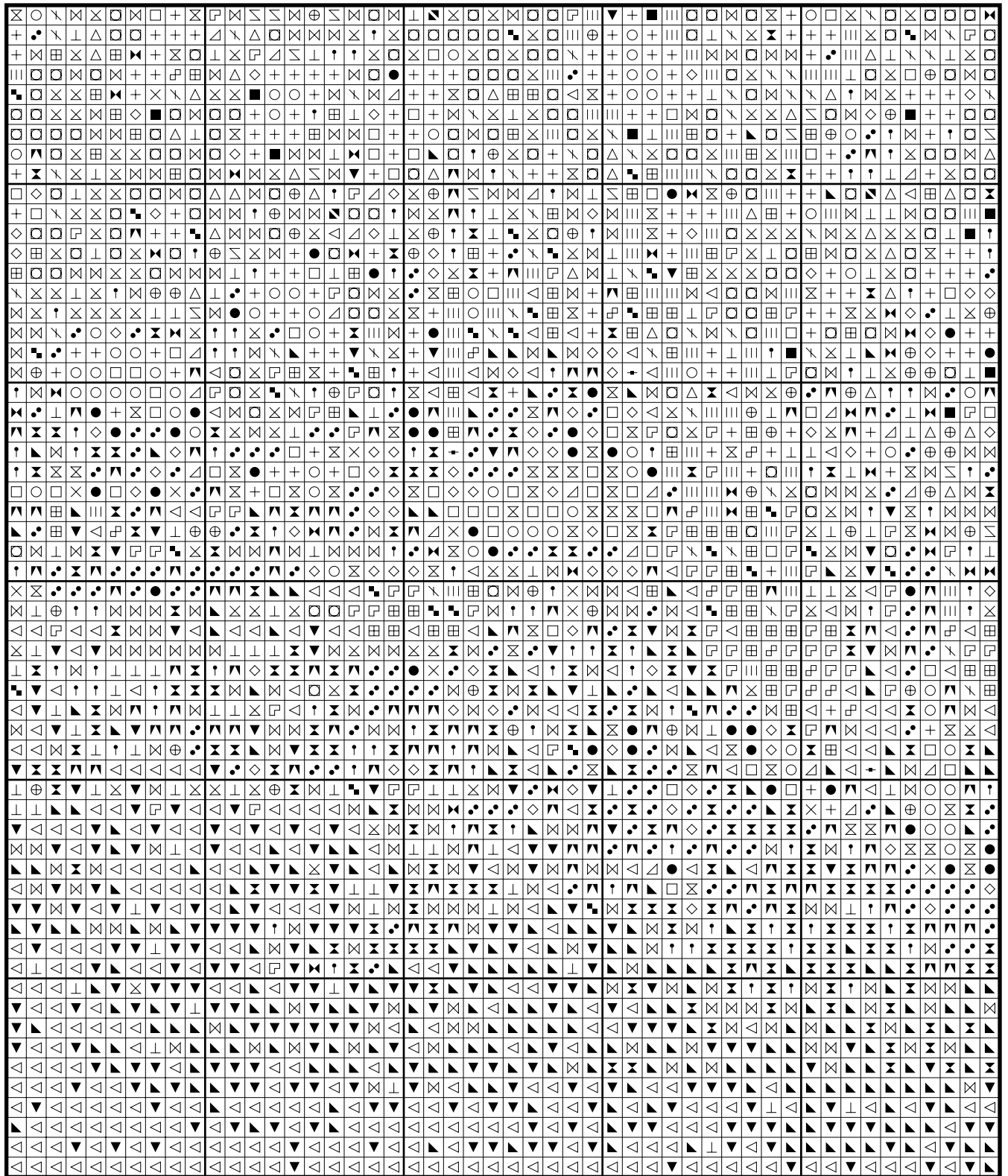
* Pattern is for personal use only and is not to be sold, copied or redistributed in any form. Copyright of Artecy Cross Stitch.

* 169 stitches wide by 230 stitches high, 32 colours used

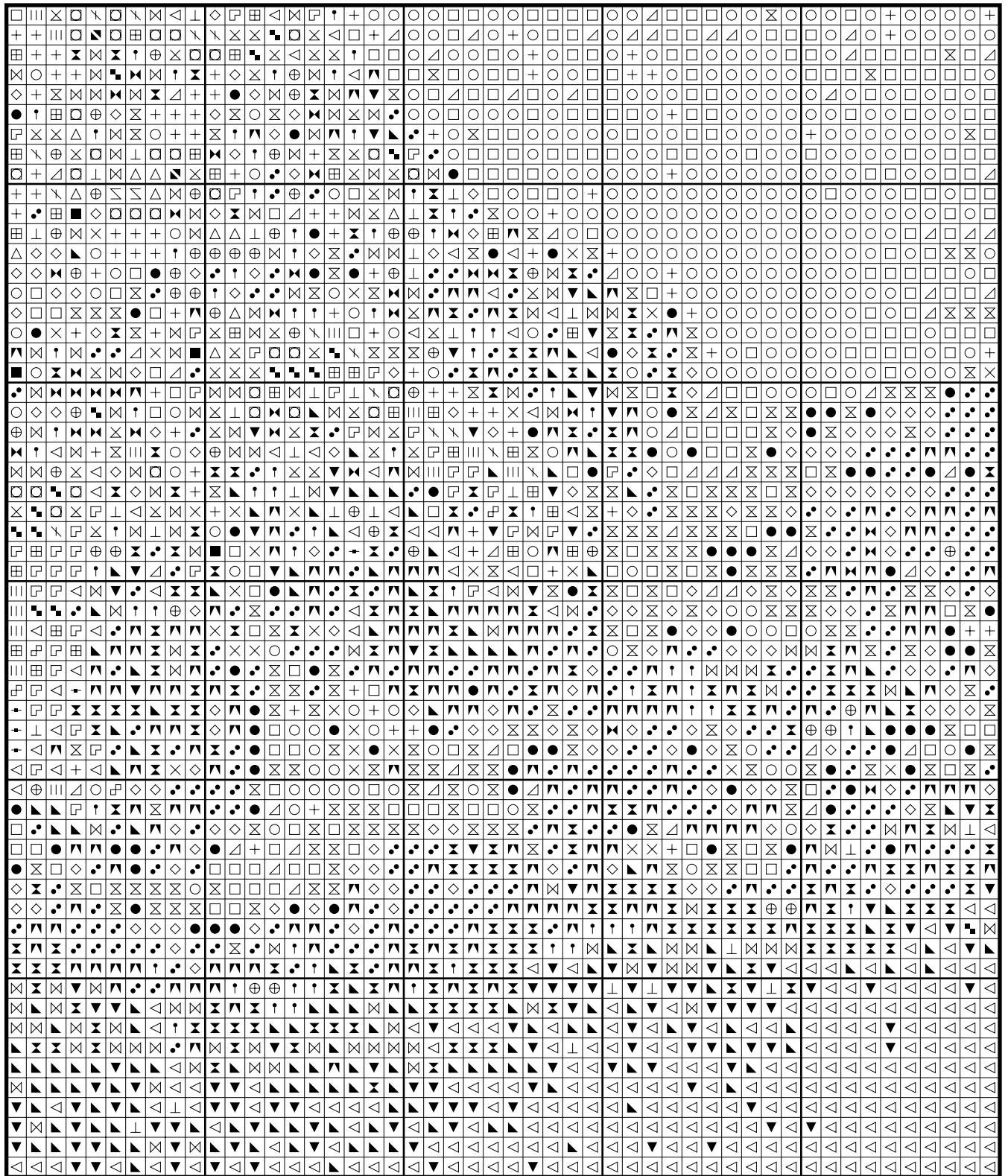
Proud Lady by Kayomi



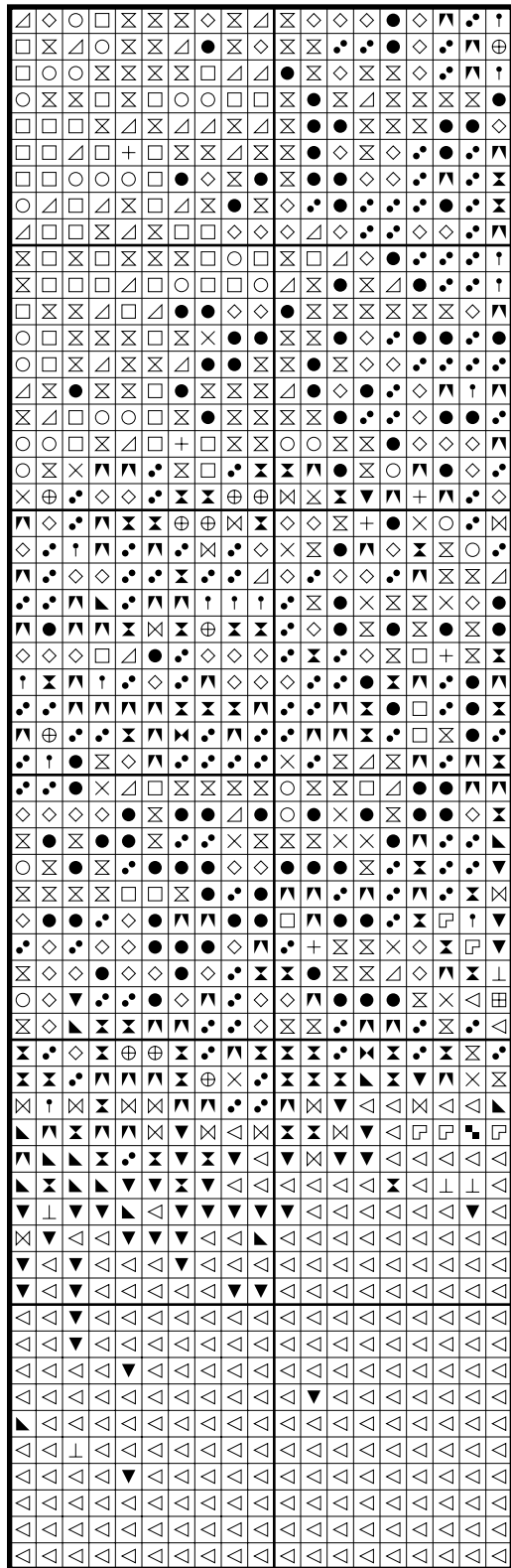
Proud Lady by Kayomi



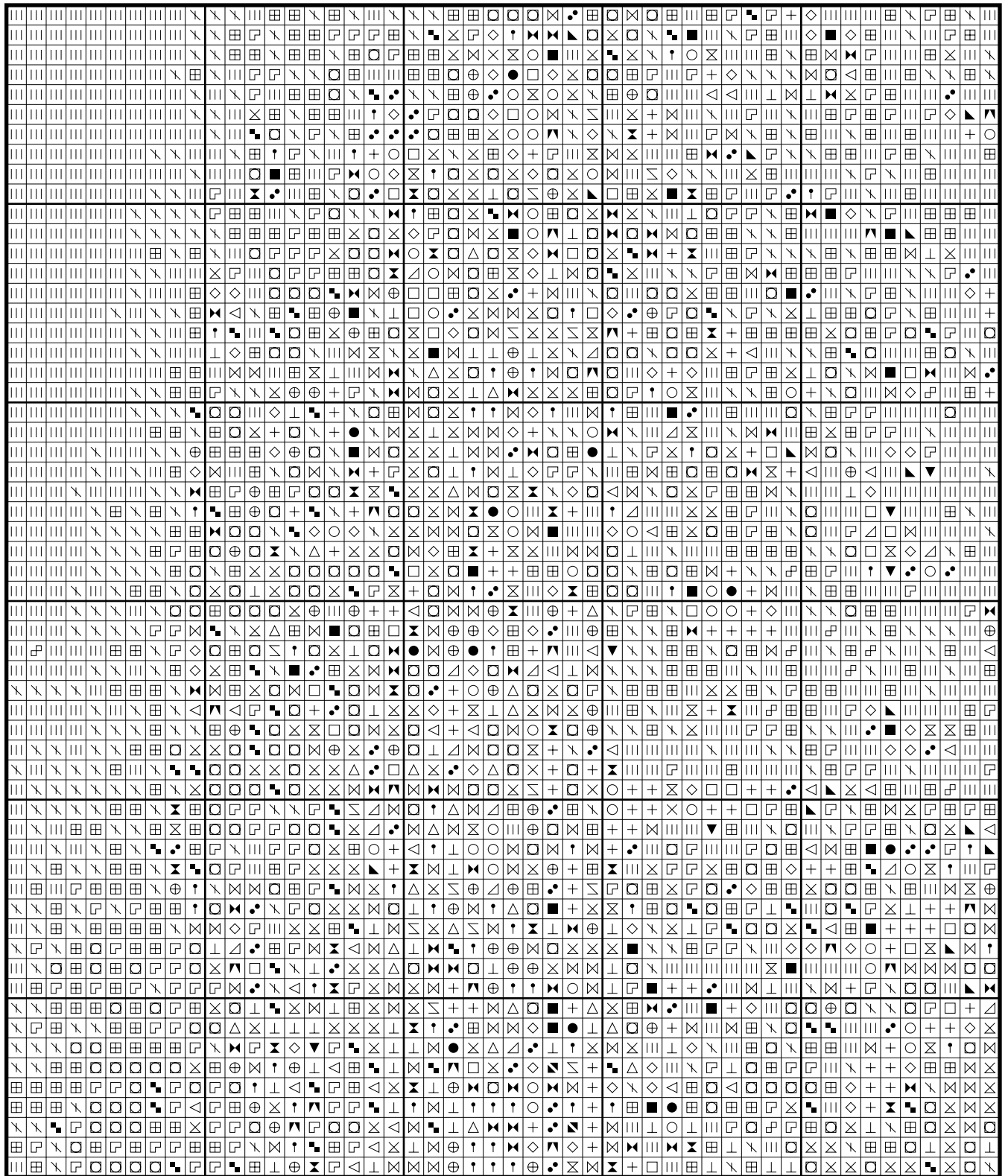
Proud Lady by Kayomi



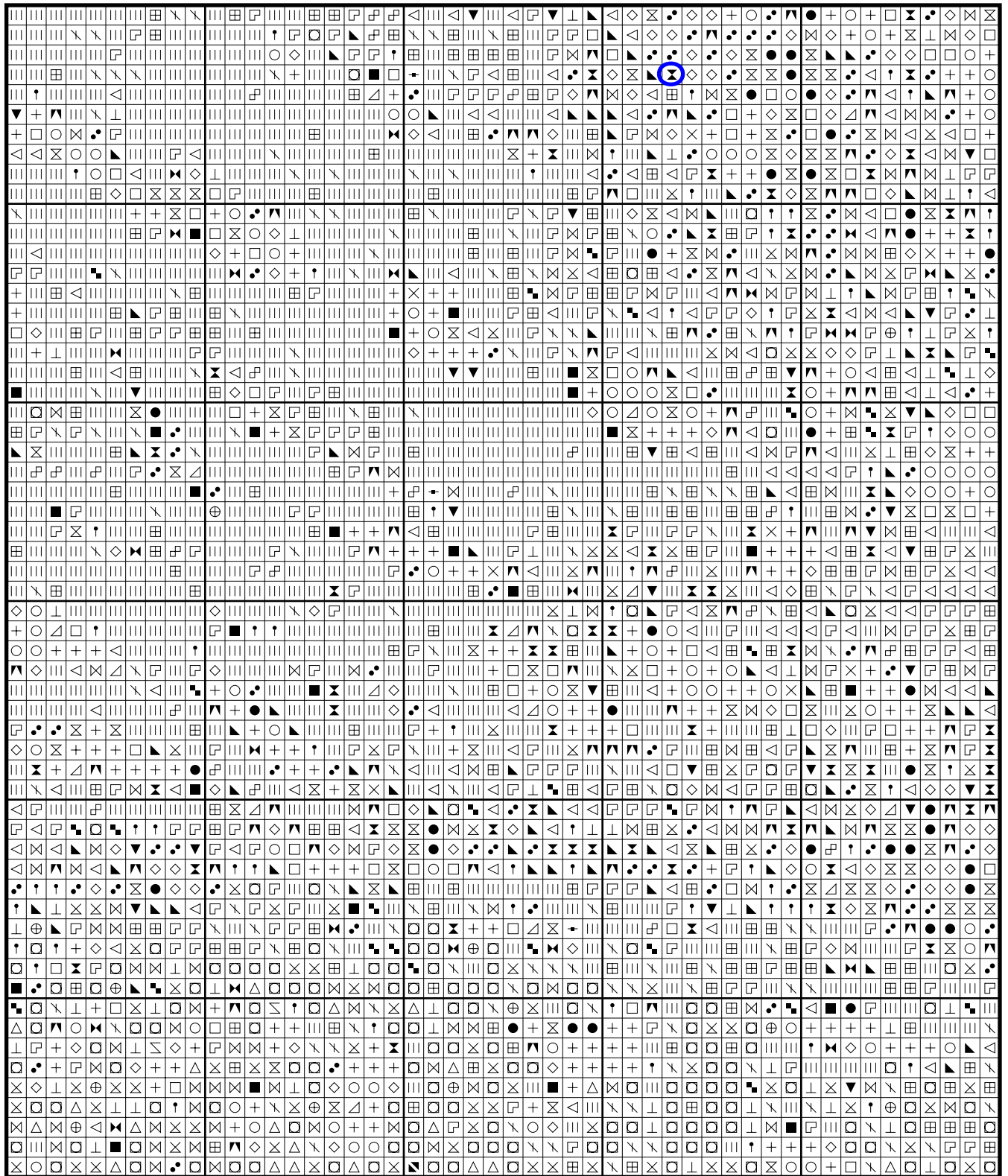
Proud Lady by Kayomi



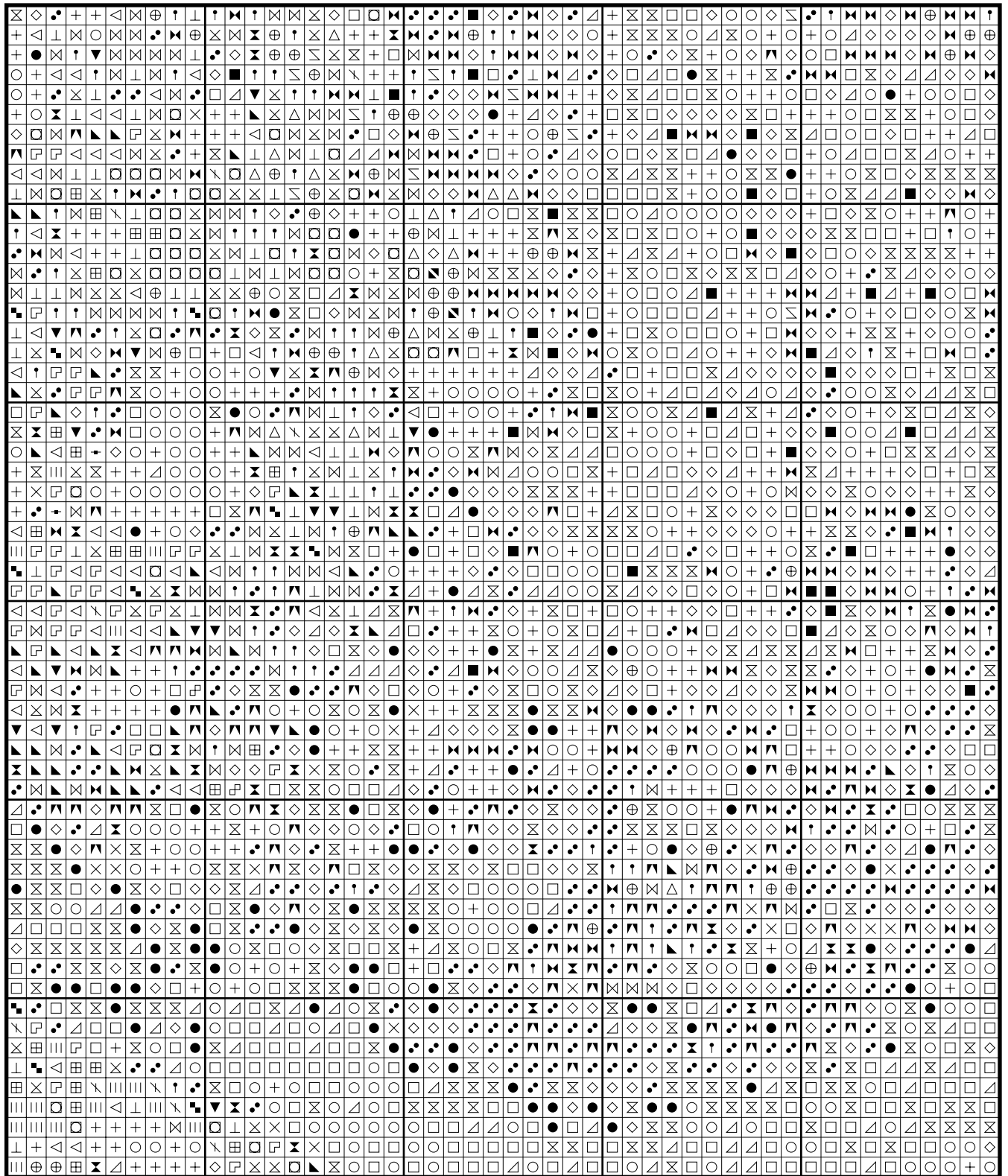
Proud Lady by Kayomi



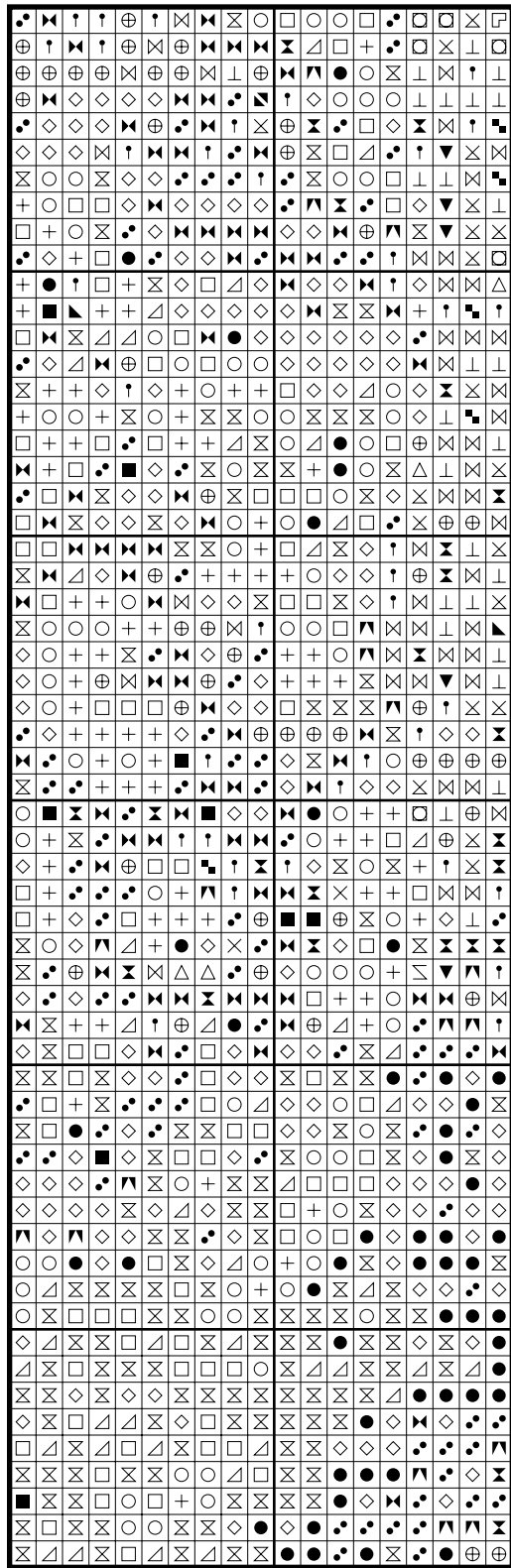
Proud Lady by Kayomi



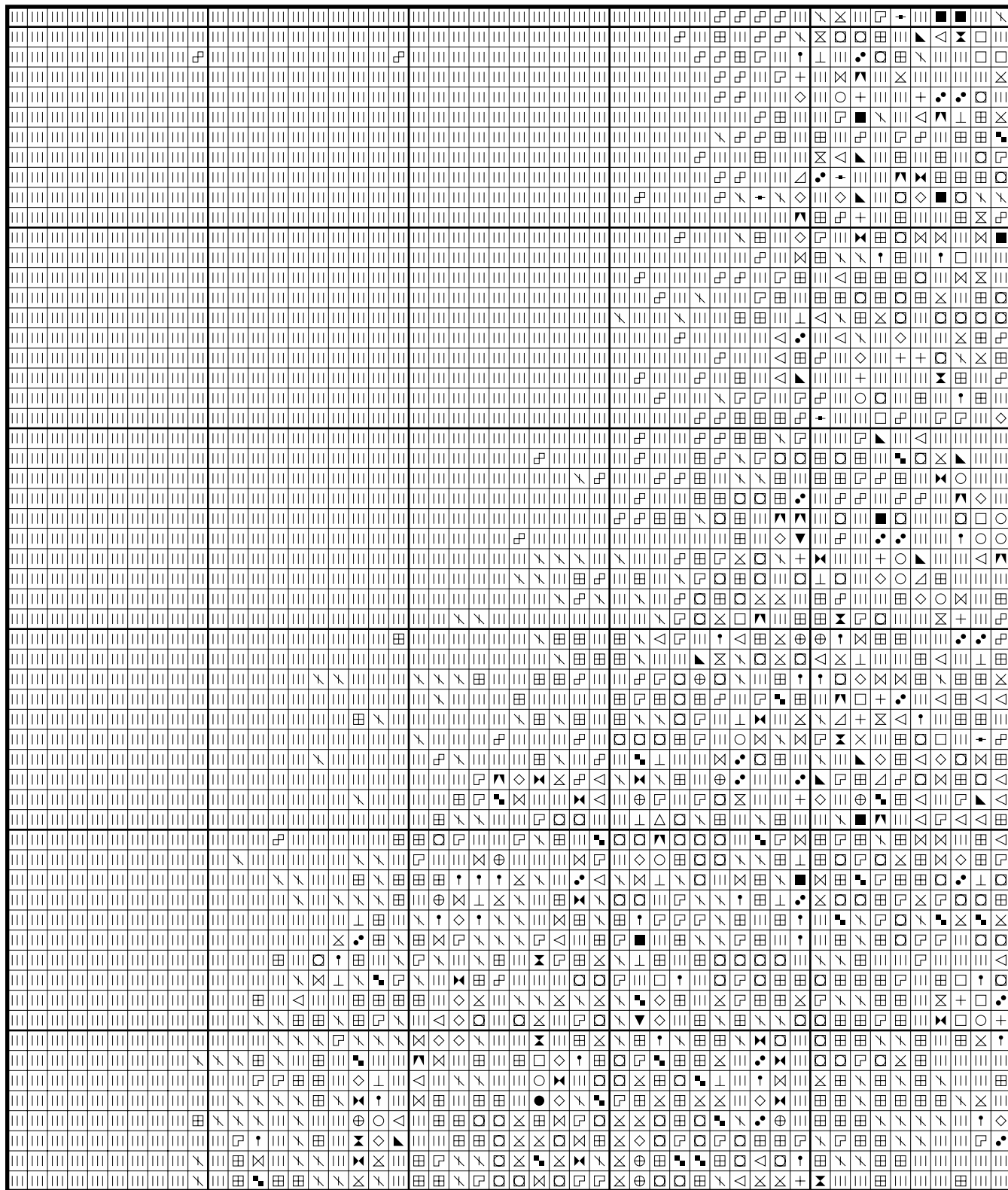
Proud Lady by Kayomi



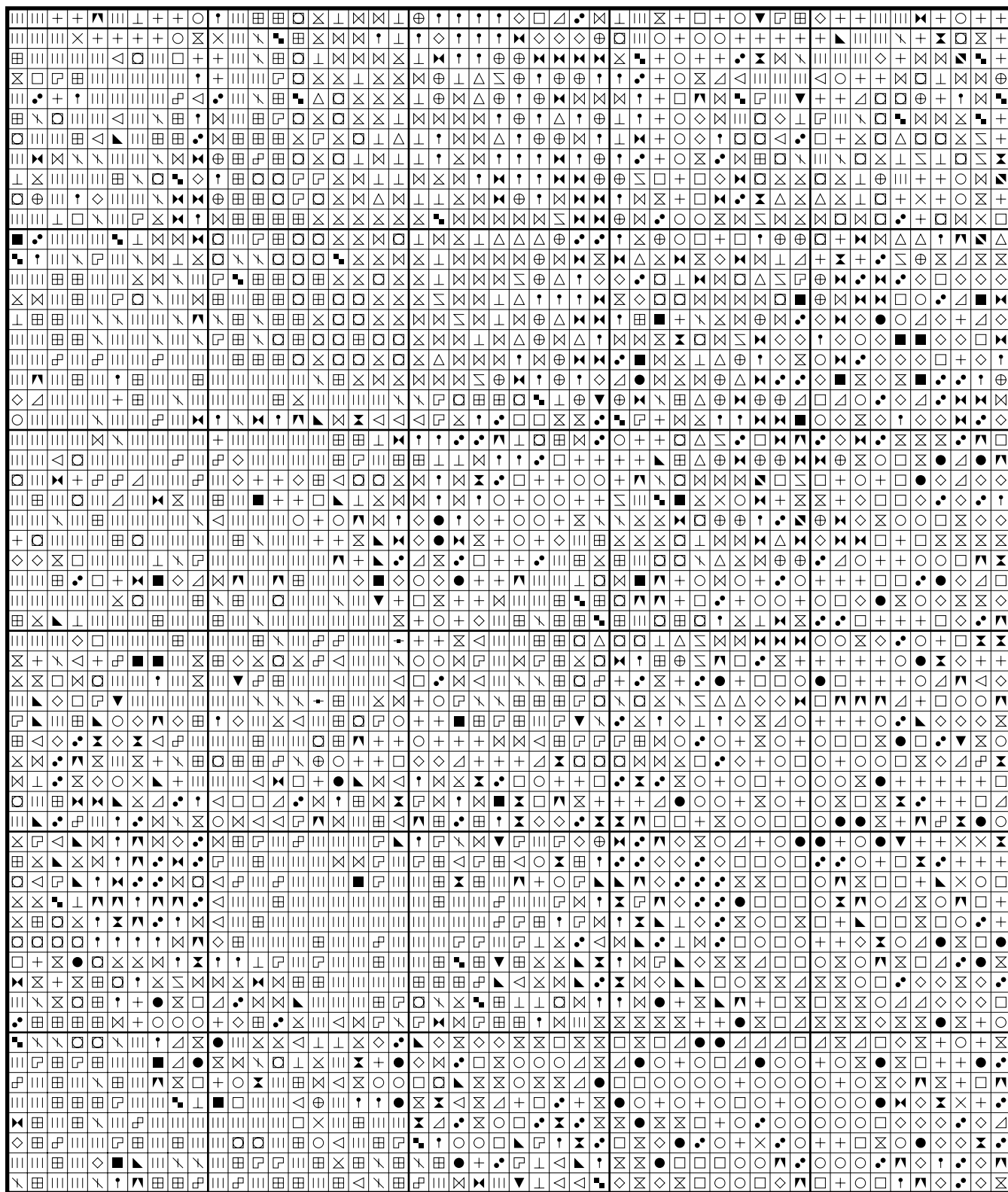
Proud Lady by Kayomi



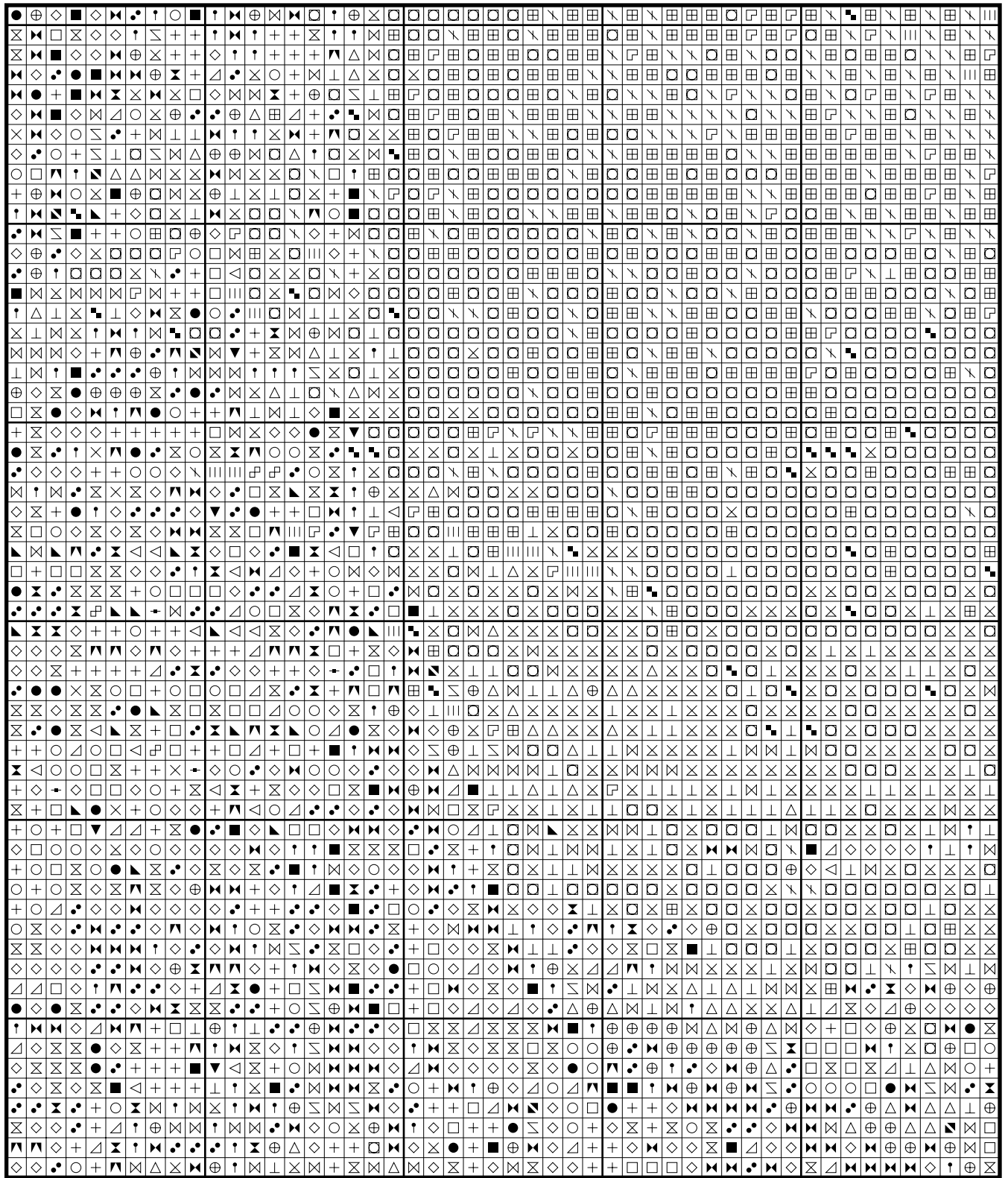
Proud Lady by Kayomi



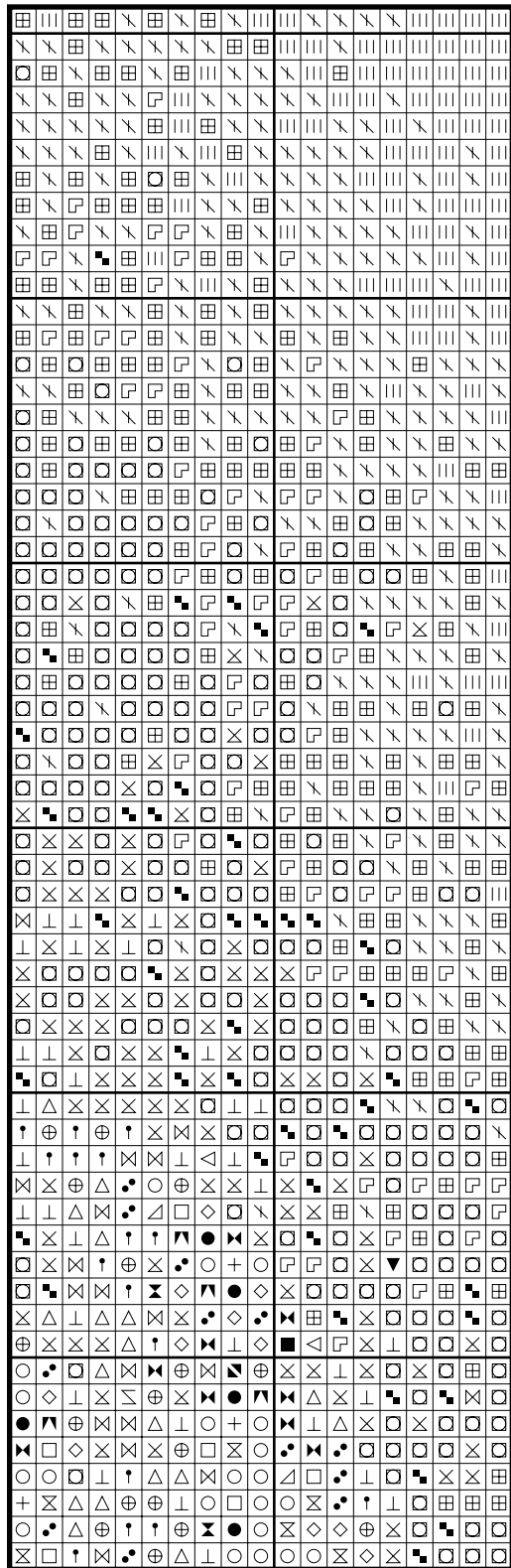
Proud Lady by Kayomi



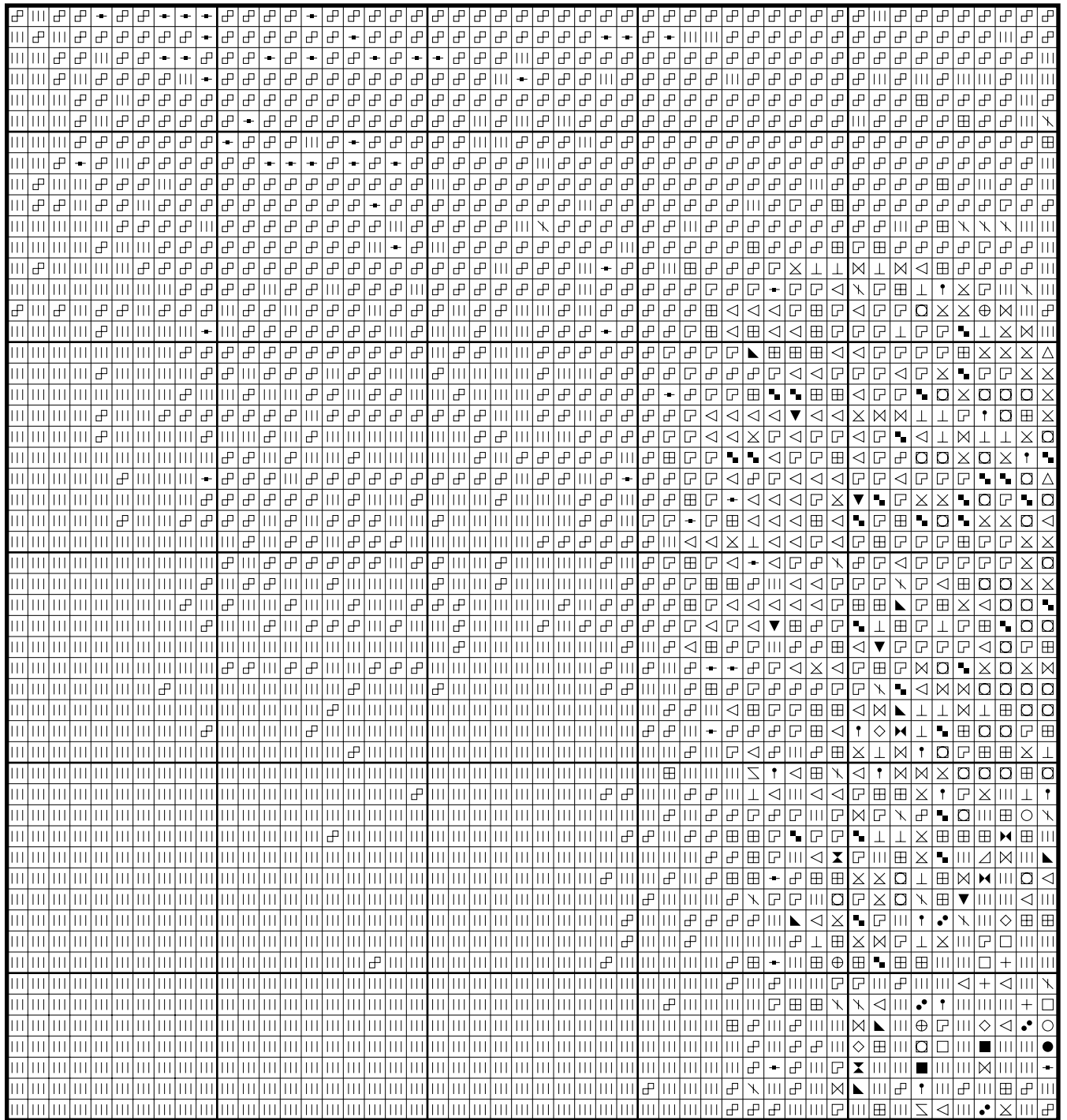
Proud Lady by Kayomi



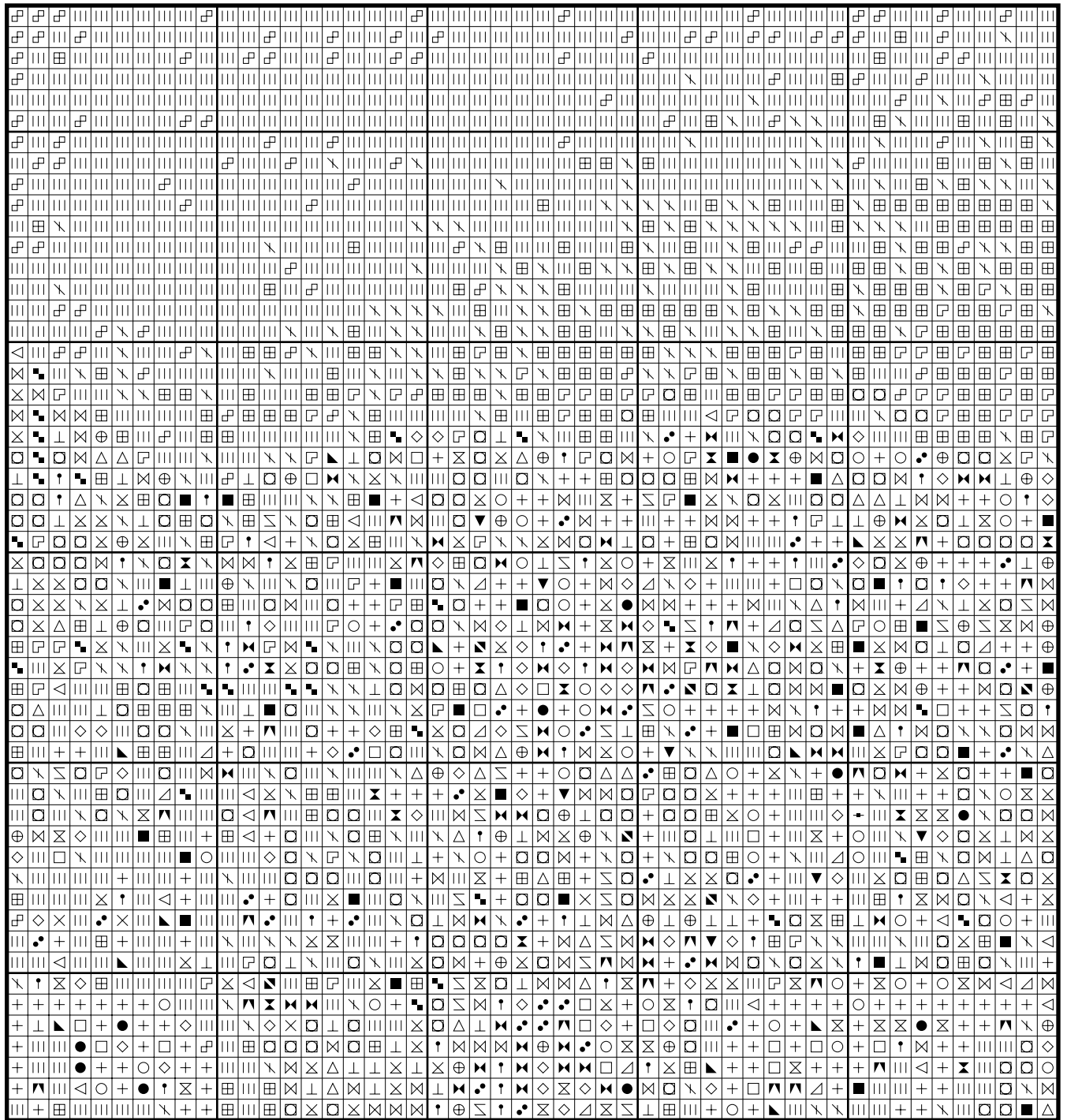
Proud Lady by Kayomi



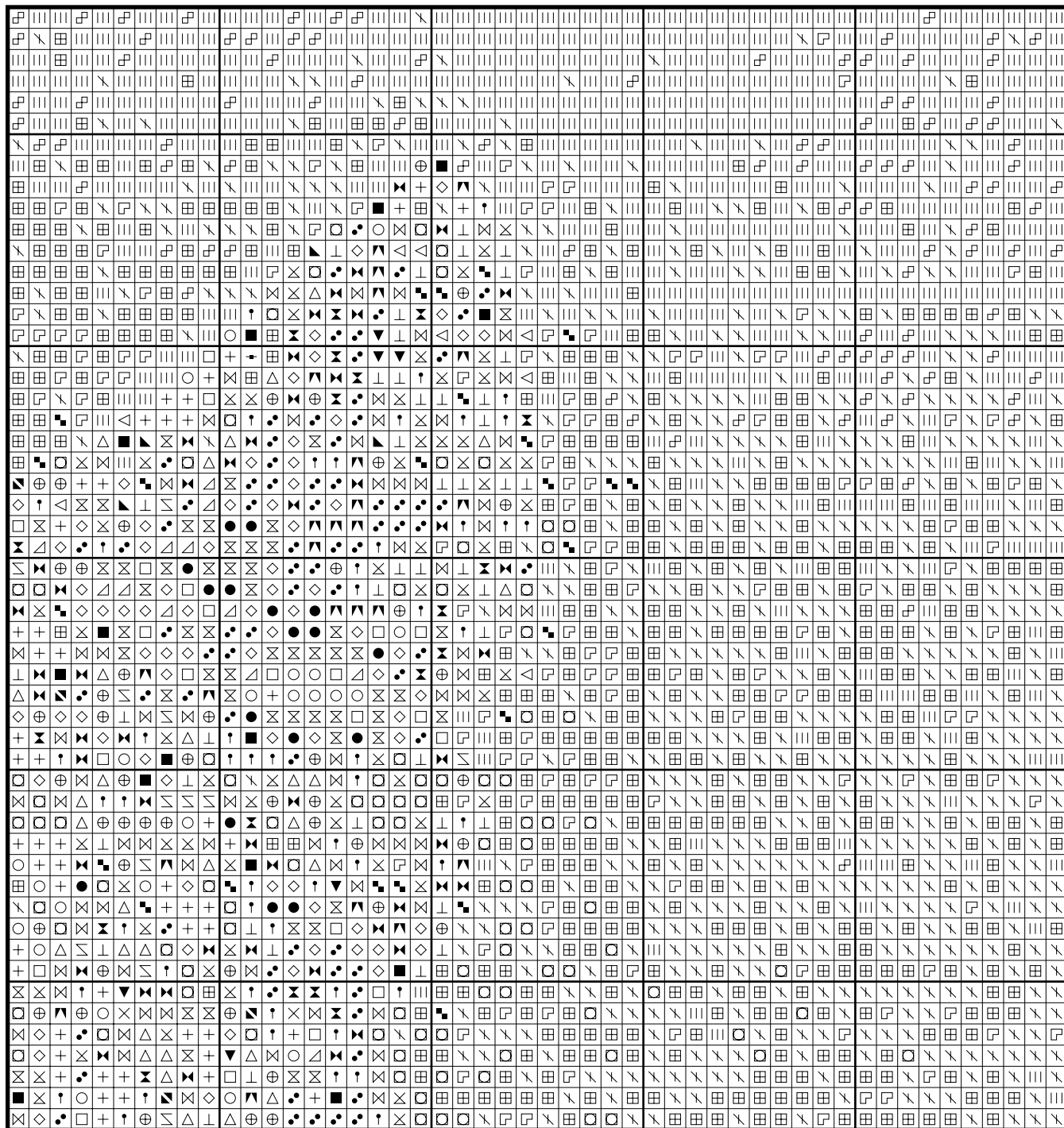
Proud Lady by Kayomi



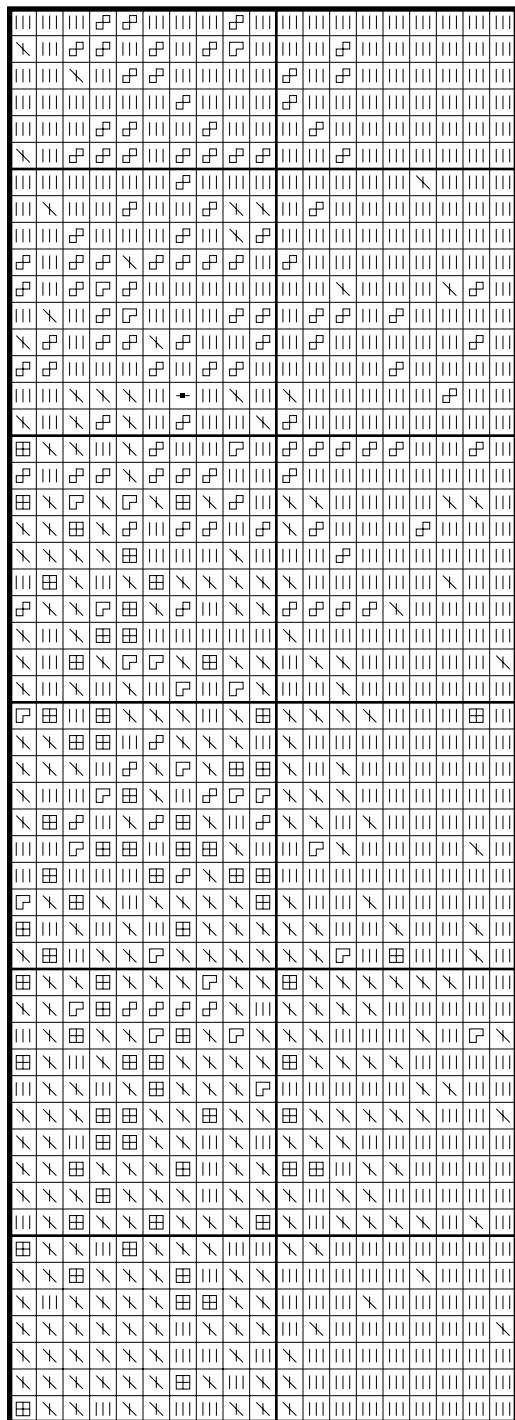
Proud Lady by Kayomi



Proud Lady by Kayomi



Proud Lady by Kayomi



* The picture used to create this pattern has been used with the very kind permission of Kayomi the artists. More of her beautiful artwork can be found here:-<http://members.aol.com/artycat/home.htm>

- DMC 646 Dark Beaver Gray: 117 stitches
- DMC 935 Dark Avocado Green: 1109 stitches
- DMC 500 Very Dark Blue Green: 1311 stitches
- DMC 310 Black: 1587 stitches
- DMC 838 Very Dark Beige Brown: 239 stitches
- DMC 936 Very Dark Avocado Green: 487 stitches
- DMC 413 Dark Pewter Gray: 573 stitches
- DMC 3799 Very Dark Pewter Gray: 1435 stitches
- DMC 3021 Very Dark Brown Gray: 1637 stitches
- DMC 434 Light Brown: 33 stitches
- DMC 610 Dark Drab Brown: 744 stitches
- DMC 3790 Ultra Dark Beige Gray: 1508 stitches
- DMC 3012 Medium Khaki Green: 549 stitches
- DMC 3726 Dark Antique Mauve: 130 stitches
- DMC 3740 Dark Antique Violet: 849 stitches
- DMC 3860 Cocoa: 883 stitches
- DMC 612 Light Drab Brown: 284 stitches
- DMC 451 Dark Shell Gray: 850 stitches
- DMC 3041 Medium Antique Violet: 908 stitches
- DMC 3861 Light Cocoa: 1607 stitches
- DMC 3782 Light Mocha Brown: 830 stitches
- DMC 524 Very Light Fern Green: 696 stitches
- DMC 3864 Light Mocha Beige: 1407 stitches
- DMC 842 Very Light Beige Brown: 418 stitches
- DMC 452 Medium Shell Gray: 2153 stitches
- DMC 453 Light Shell Gray: 1312 stitches
- DMC 3856 Ultra Very Light Mahogany: 2202 stitches
- DMC 3024 Very Light Brown Gray: 86 stitches
- DMC 3354 Light Dusty Rose: 2581 stitches
- DMC 211 Light Lavender: 1341 stitches
- DMC 754 Light Peach: 2378 stitches
- DMC 818 Baby Pink: 6626 stitches

* Generally 30 stitches will use 1 metre of DMC floss.

PATTERN LAYOUT			
14	15	16	17
10	11	12	13
6	7	8	9
2	3	4	5

