



THE CREATIVE SUITCASE ★ TUTORIAL

[HTTP://MADEBYNIGHT.BLOGSPOT.COM](http://madebynight.blogspot.com) ★ [HTTP://MADEBYNIGHT-SHOP.BLOGSPOT.COM](http://madebynight-shop.blogspot.com)





This Creative Suitcase fits an A4 paper block. It has many pockets for your markers and colored pencils. You can also slip cisors, a watercolor box, a smaller drawing book or some crayons. It also has a removable zippered pouch where you'll want to put the supplies you just can't live without...

I hope this tutorial will help you all to feel artistic anywhere and any time...

English isn't my mother language. I really hope I didn't write to many mistakes or nonsenses. if I did, please excuse me and tell me ;-)



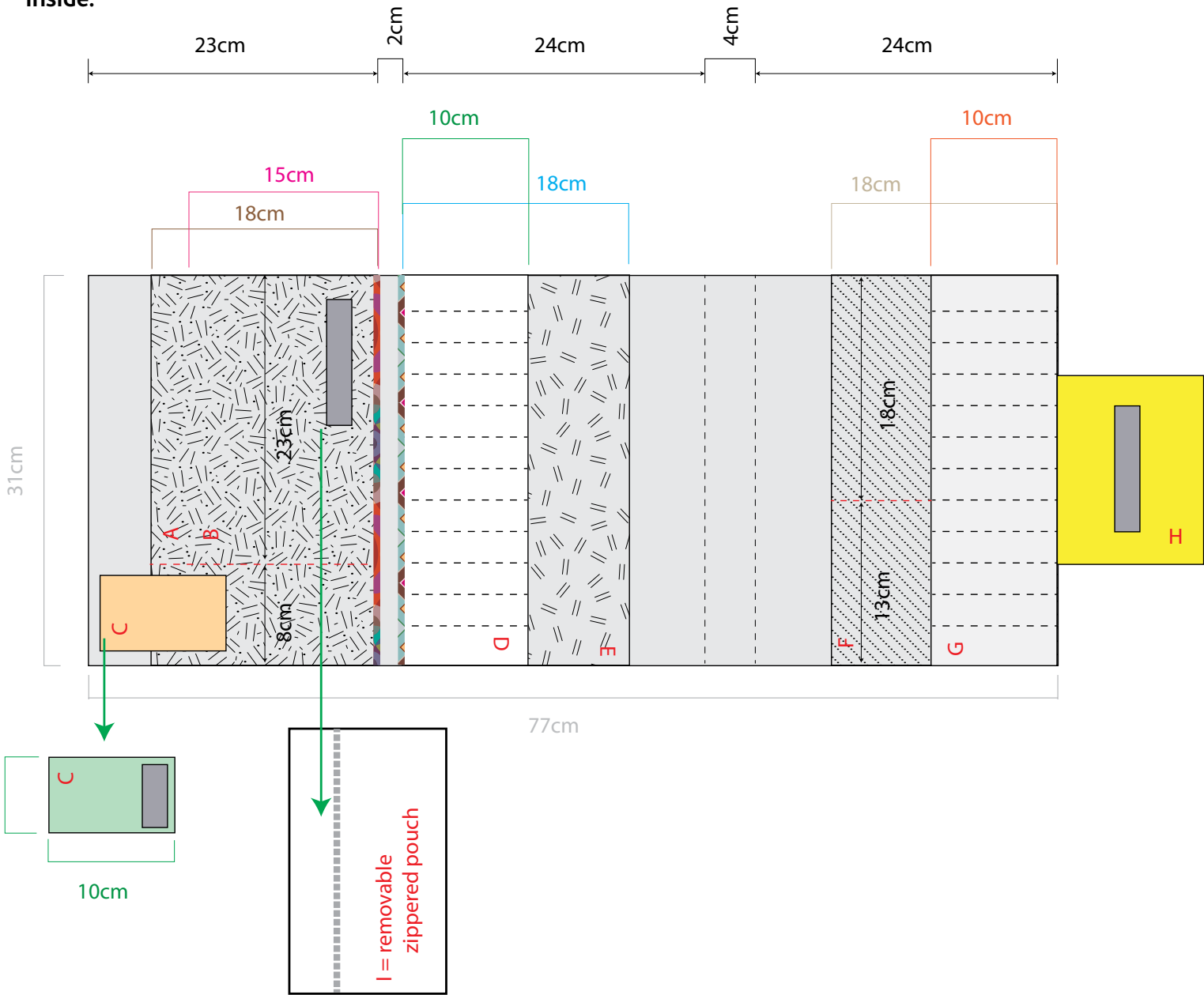
Don't hesitate to send me an e-mail (spunkybelgian@gmail.com) if you have questions or advices.

Please be honest and use the tutorial for personal use only.
And don't forget to send me pictures of your bag when you're done...

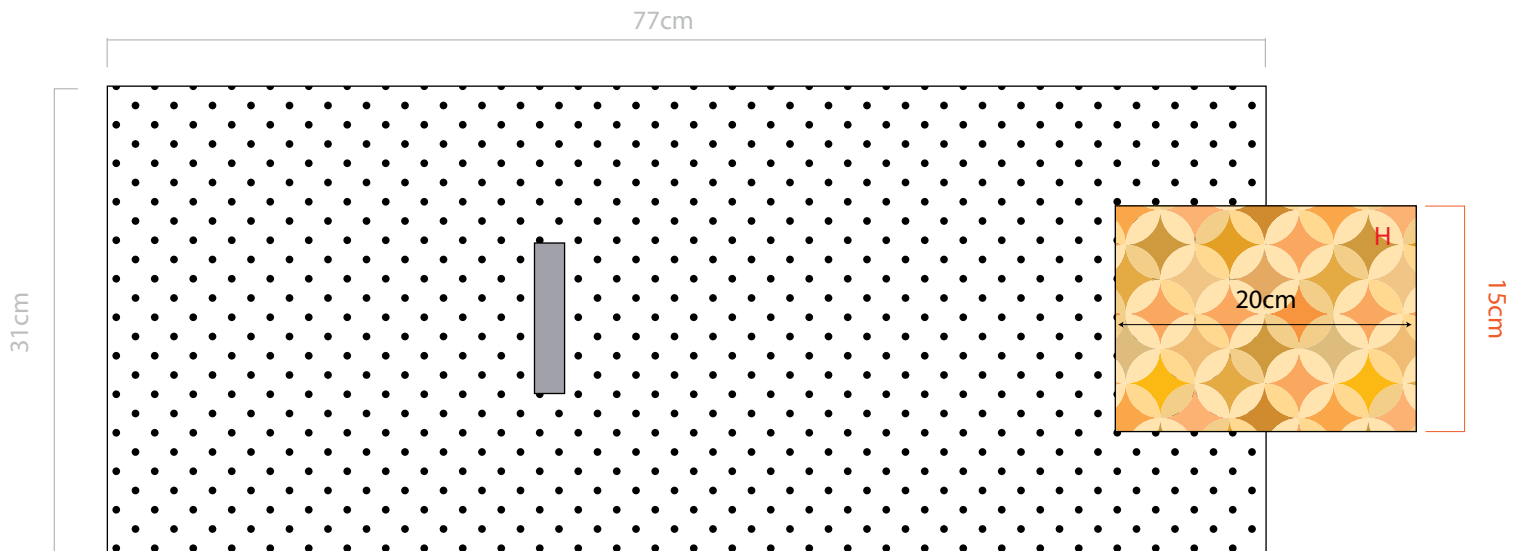
[HTTP://MADEBYNIGHT.BLOGSPOT.COM](http://MADEBYNIGHT.BLOGSPOT.COM) ★ [HTTP://MADEBYNIGHT-SHOP.BLOGSPOT.COM](http://MADEBYNIGHT-SHOP.BLOGSPOT.COM)

SIZE:

Inside:



Outside



WHAT YOU'LL NEED:

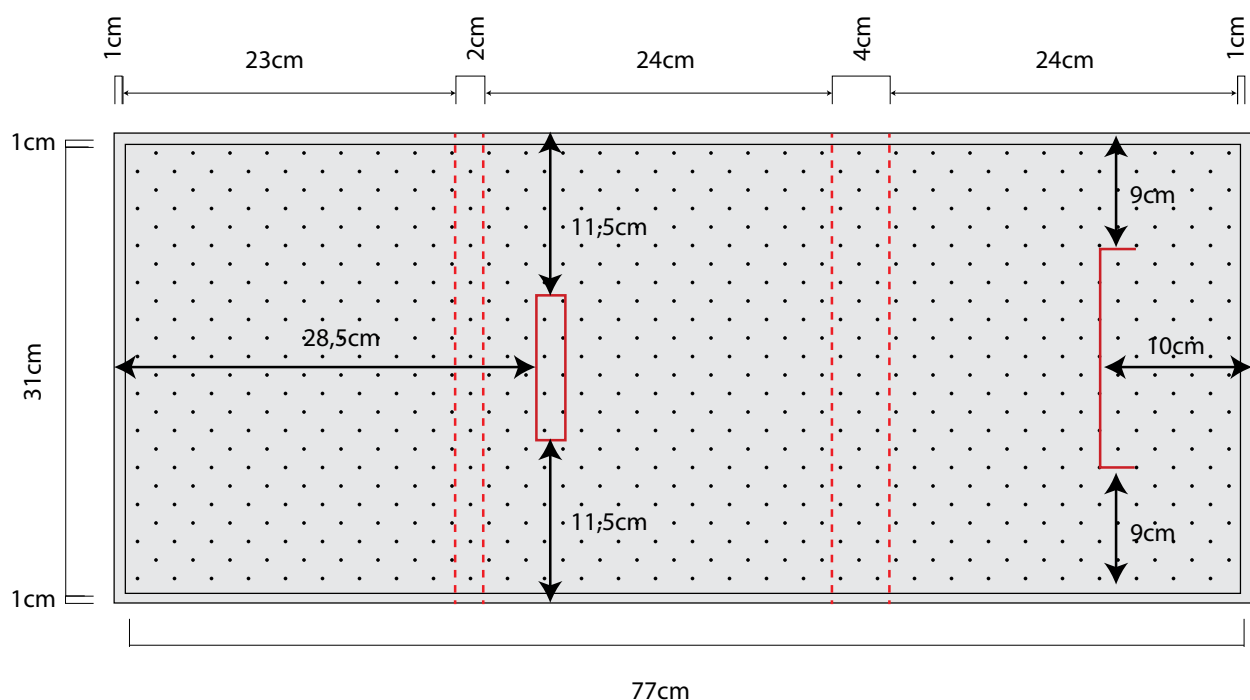
- All the fabric measurements are given with 1cm seam allowance included
- You may want to use less different fabric prints than I did
- Don't hesitate, as you cut the fabric pieces, to check the OK boxes. You'll be certain not to forget any.

Piece	Size	OK	Thick iron-on interfacing*	OK
Outside	79x33cm	<input type="checkbox"/>	77x31cm	<input type="checkbox"/>
Inside	79x33cm	<input type="checkbox"/>		
A	20x33cm	<input type="checkbox"/>	18x31cm	<input type="checkbox"/>
B	17x33cm	<input type="checkbox"/>	15x31cm	<input type="checkbox"/>
C	2x 8x11cm	<input type="checkbox"/> <input type="checkbox"/>	6x9cm	<input type="checkbox"/>
D	22x33cm	<input type="checkbox"/>	10x31cm	<input type="checkbox"/>
E	20x33cm	<input type="checkbox"/>	18x31cm	<input type="checkbox"/>
F	20x33cm	<input type="checkbox"/>	18x31cm	<input type="checkbox"/>
G	22x33cm	<input type="checkbox"/>	10x31cm	<input type="checkbox"/>
H	2x 22x17cm	<input type="checkbox"/> <input type="checkbox"/>	20x15cm	<input type="checkbox"/>
I	2x 6x24cm	<input type="checkbox"/> <input type="checkbox"/>		
	2x 21x24cm	<input type="checkbox"/> <input type="checkbox"/>		
Strap	2x 6x110cm	<input type="checkbox"/> <input type="checkbox"/>		
Handle	2x 6x33cm	<input type="checkbox"/> <input type="checkbox"/>		
4cm bias tape	2x 33cm	<input type="checkbox"/> <input type="checkbox"/>		
Velcro 2cm	10cm (bag flap) 10cm (zipper) 5cm (cisor pocket flap)	<input type="checkbox"/> <input type="checkbox"/> <input type="checkbox"/>		
Zipper	20cm	<input type="checkbox"/>		

* I always cut the interfacing without the seam allowance. It makes it easier to sew and neater edges

1/ Cut all the fabric pieces and iron on the interfacing when needed.

2/ With fabric chalk, draw the panel separations and velcro place on the outside fabric:

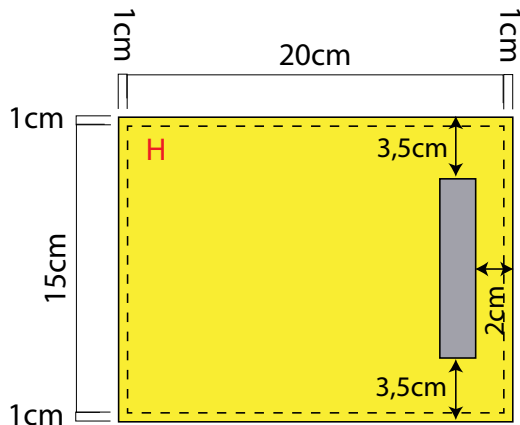


3/ Decorate the outside as you want.
 (I picked a fabric with flowers and iron on, interfacing behind one of them. I then cut it - following its edges, glued it with fabric glue on my outside fabric and topstitched all around it - once at 2mm from edges and twice around its edges)

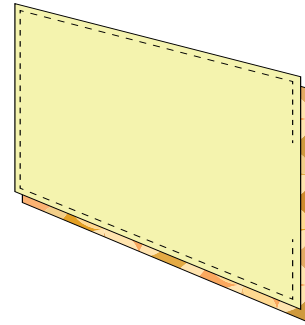


4/ Sew the soft side of the closing velcro (10cm) where it belongs

5/ Take the inside H piece (the one you can't see from outside) and sew the other side of the 10cm velcro as shown on the drawing below:



6/ Pin both H pieces, right faces facing and sew all around with a 1cm seam allowance BUT leaving a 5cm large opening



7/ Turn right side out and, helping you with a pen, push corners out. Iron flat and topstitch all around at 3mm from edges.

8/ Pin the flap where it belongs on the outside fabric and sew tightly

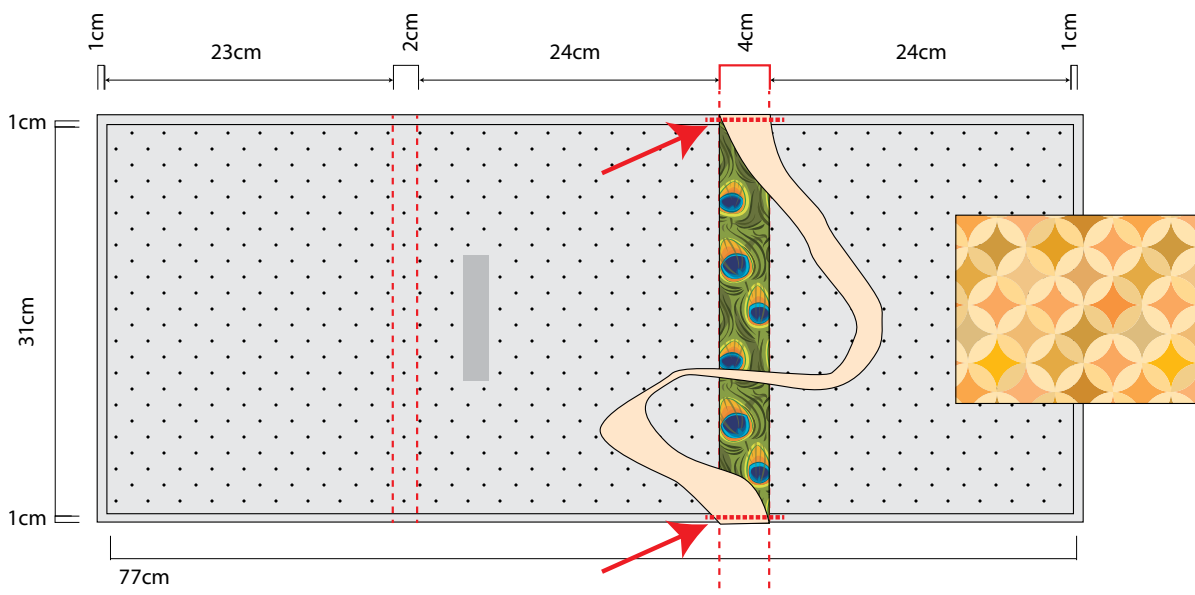


9/ The handle and the strap:

With both right sides facing, sew both long edges together. Turn right sides out, iron flat and topstitch at 3mm from edges. Proceed the exact same way with the strap.

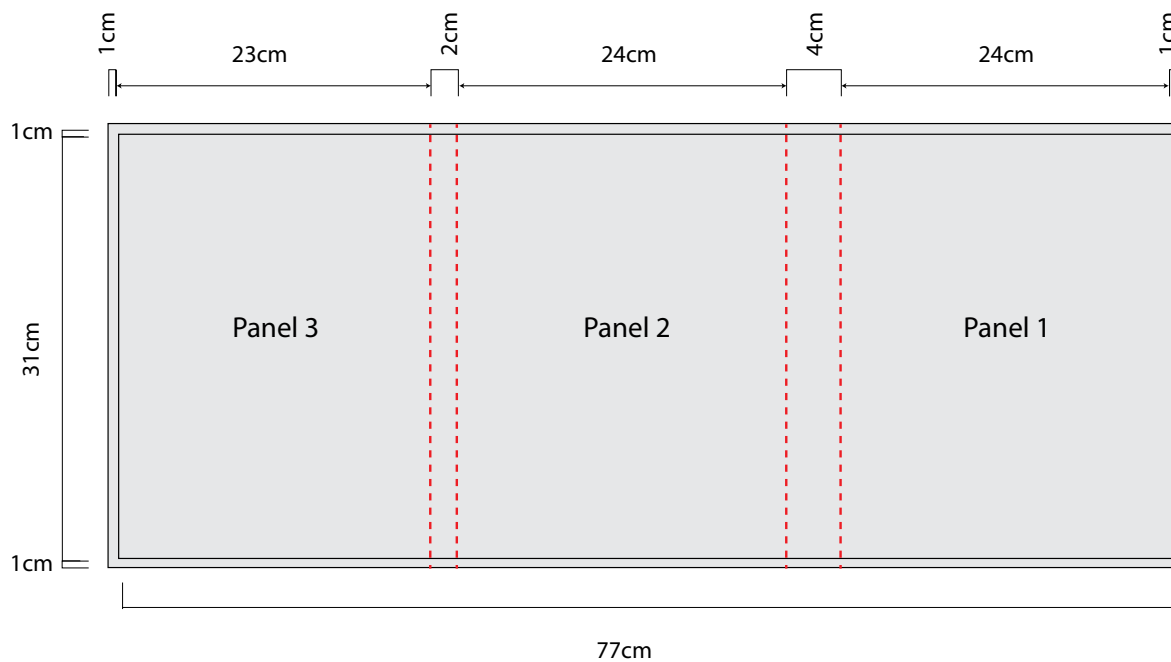


10/ Pin both ends of the handle, then of the strap on the outside as shown on the drawing here below. Sew them both with tight zig-zag stitch.



You may now put the outside piece aside. We will now assemble the inside, panel after panel.

11/ With a fabric chalk, draw the separation lines on the inside fabric piece:



PANEL #1 - F AND G POCKETS

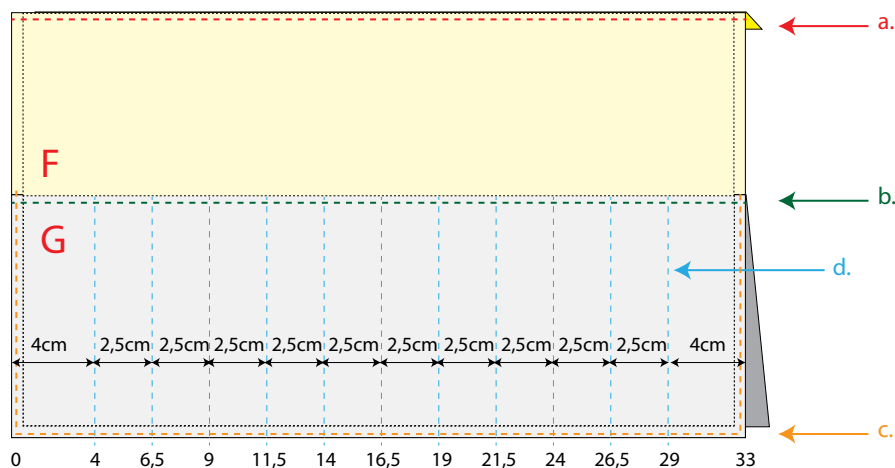
12/ Let's start with panel 1 - the one at the left

a/ Take "F" (20x33cm). Serge or sew a zigzag at the top edge (a long one). Fold a 1cm hem to the wrong side of fabric. Iron flat and topstitch at 3mm from edge.

b/ Take "G" (22x33cm). Fold in 2, with the wrong side of fabric inside so that your pocket is nox 10(+1) x 33cm. Iron flat and topstich at 3mm from the fold (the top of your pocket).

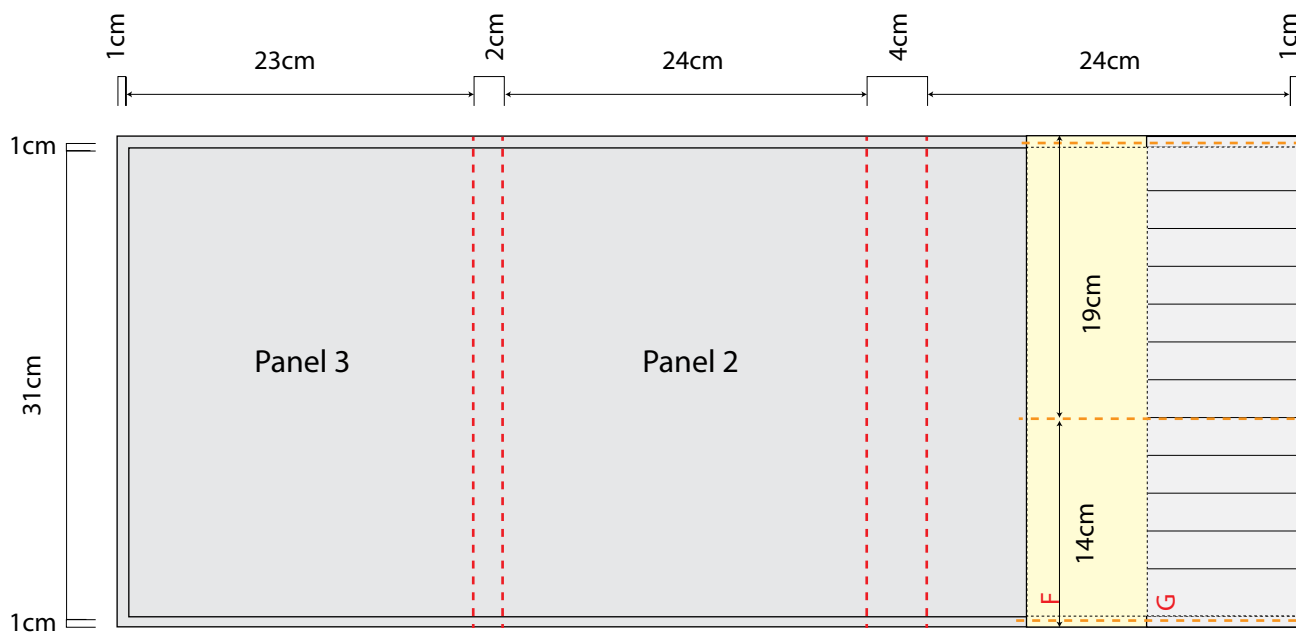
c/ Put G on F and sew both sides and the bottom at 3mm from the edge.

d/ Then sew the different markers pockets as shown on the drawing below:



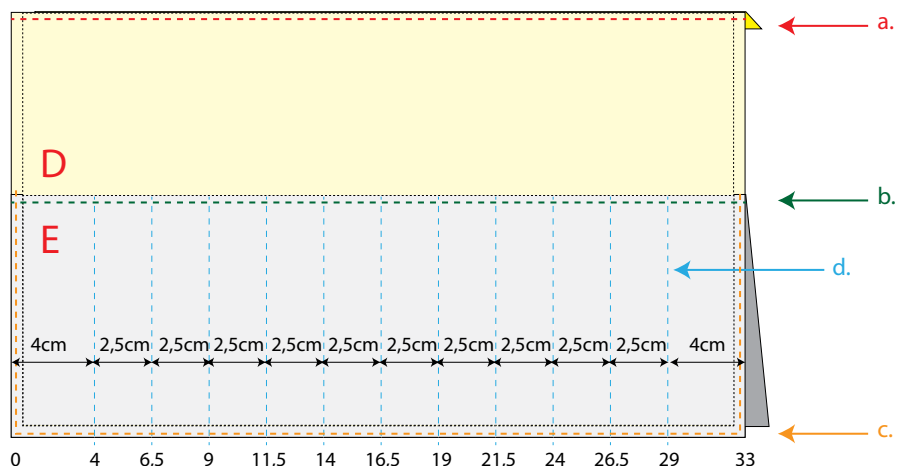
13/ Place F and G on the inside (right side up). their bottom must be aligned with the right edge. Sew them on the sides and bottom at 3mm from the edges (orange dashed line).

Then, divide "F" as shown below by sewing through the 3 fabrics.



PANEL #2 - D AND E POCKETS

14/ Proceed the exact same way with D and E you did with the first 2 pockets (from a to d).

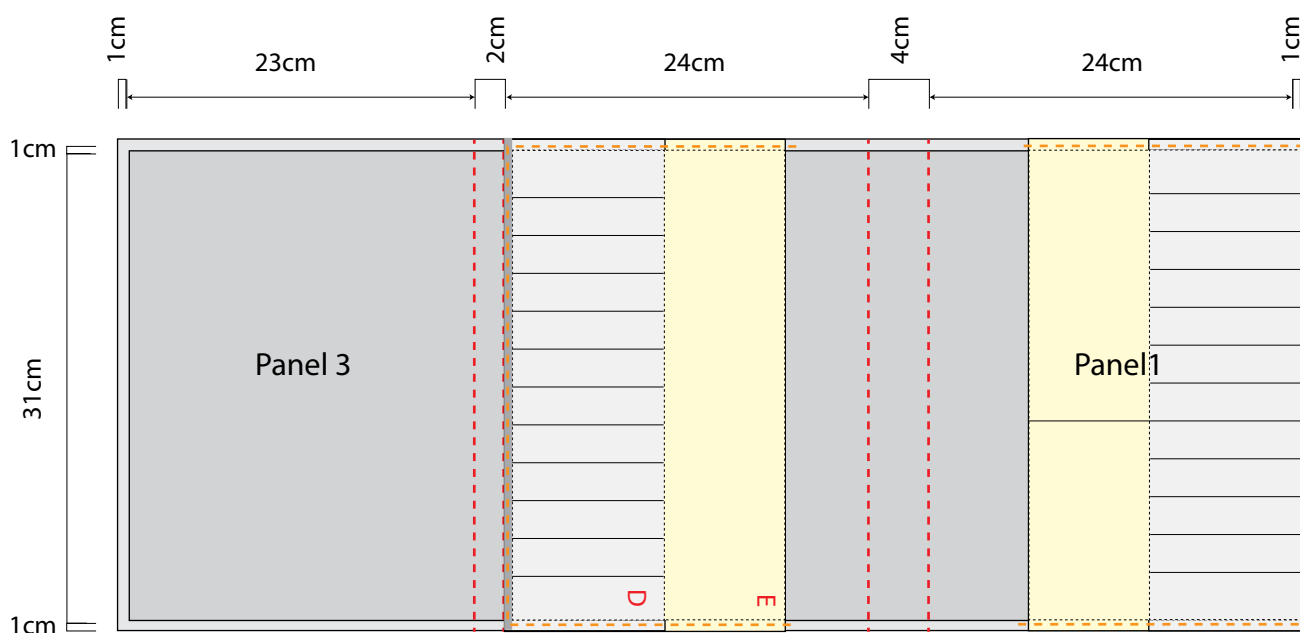


15 / As the bottom of these pockets won't be hidden in the final seam, you need to make it look nicer. That's why you'll now use bias tape. It will also "secure" the pockets.

Pin one of the 33cm long bias tape on the bottom edge of the top pocket - right sides facing (cfr photo). Sew them together at 7mm from edge (on the fold line). Fold the bias tape over to the wrong side and pin it in place (but... your pins must be on the right face).



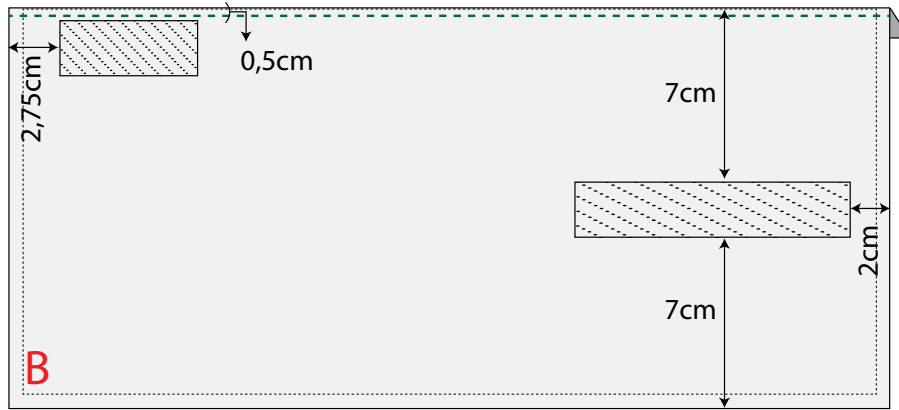
16 / Place and pin the pockets on the inside as shown here below. Sew both sides and the bottom (on the bias tape) at 3mm from the edges. (To make it stronger, don't hesitate to sew twice on the bias tape).



PANEL #3 - A AND B POCKETS

17/ Make a top hem on the pocket B as you did with .

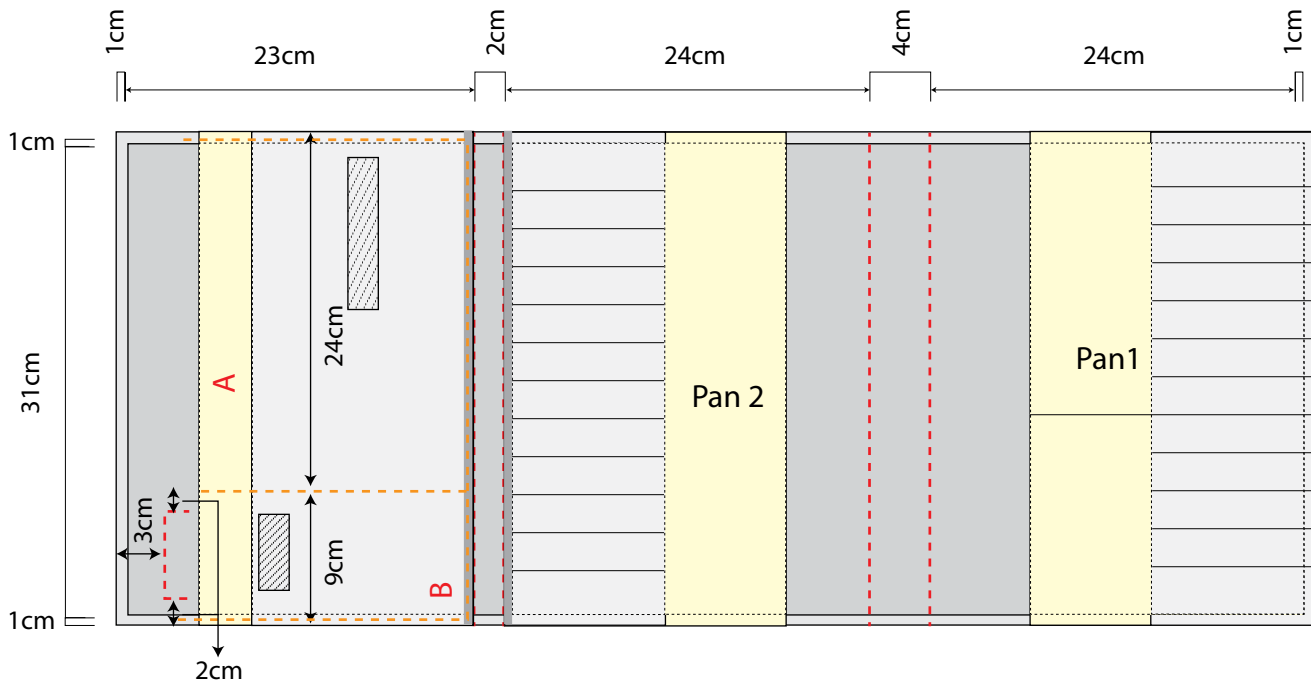
Afterwards, sew- at the places shown on the drawing below - the soft part of the 2 remaining velcro's. The 5cm one will close the pocket. The 10cm one will be used to attach the removable zippered pouch.



18 / Sew the top hem of A. Sew B on A, aligning both bottom edges. And, as for the previous pockets, sew bias tape over the bottom edges.

19 / Sew A and B on the inside. Then sew the pocket separation through the 3 fabrics (as shown on the drawing).

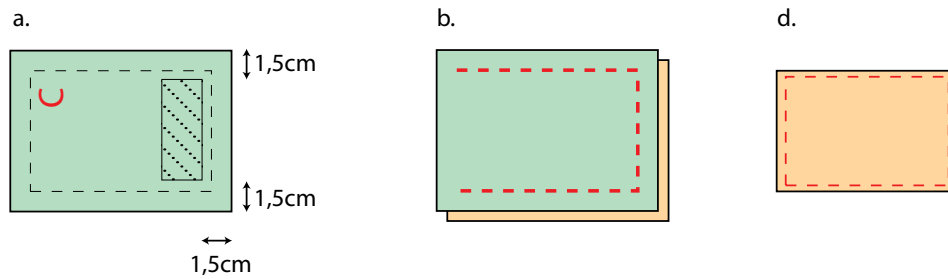
Then, with fabric chalk, mark where the flap will come.



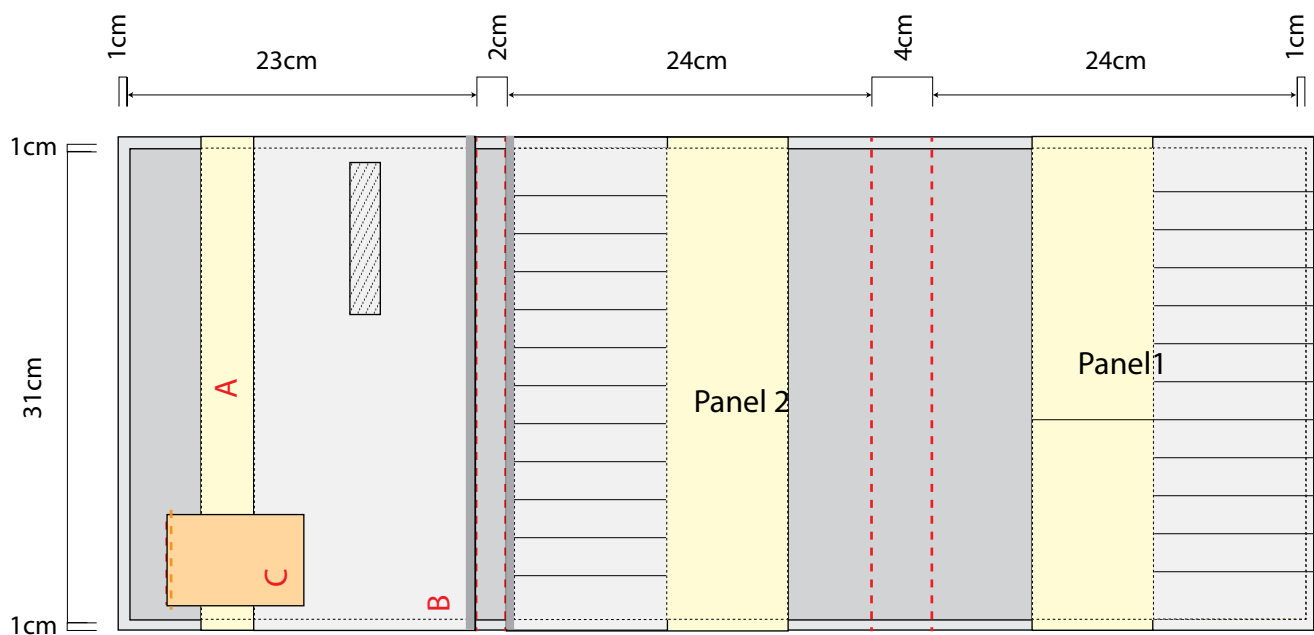
PANEL #3 - FLAP C

20/

- Sew the remaining 5cm .velcro piece on the right side of the inside fabric of the flap
- With right sides facing, sew both fabric pieces together, at 1cm from edges, leaving one end opened
- Turn right side out and iron flap
- Topstich all around at 3mm from edges



21/ Sew the flap where it belongs:

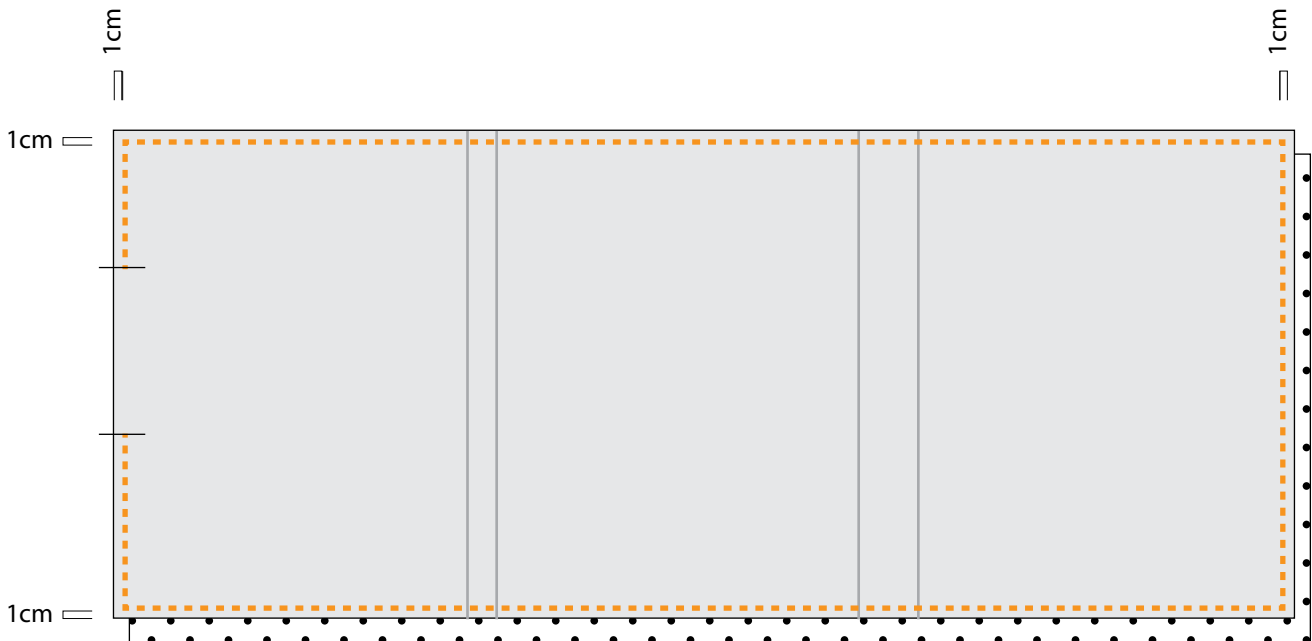


ALMOST DONE ;-)

22/ With right sides facing, pin the inside on the outside.

Make sure neither of the flaps nor the handle and strap risk to be included in the seam (you may want to pin them in place). Make also sure that the 3 panels match on both fabrics.

Sew all around - except for a 10cm opening - at 1cm from edge.



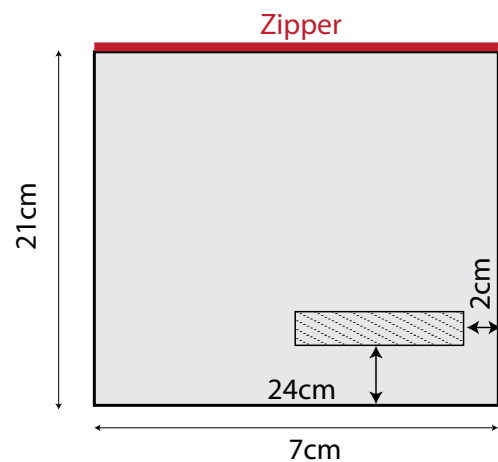
Turn right side out, iron flat and topstitch all around, closing the opening - again make sure not to include the flaps, the handle nor the strap in the seam.

Your creative suitcase is now done... Let's make the removable zippered pouch...

THE REMOVABLE POUCH

23/

• Sew the remaining 10cm velcro piece on the outside fabric piece, the one that measures: 24 (L) x 21 (H) cm:



- Sew the zipper:
 - Put the outside strip that measures 6x24cm in front of you, right face up. Place the zipper on it, right face; Then, the 6x24 lining piece, right face down.
 - Pin together making sure to point where the small metallic parts of the zipper are (PH1) You must not sew past these metallic parts. Sew the 3 elements together, with your zipper foot, making sure to start and stop at about 1,5cm from edges (PH2).
 - Flip right side out, iron flat and topstitch starting and stopping again at 1,5cm from the edges (PH3)
 - Proceed the exact same way with the other side of the zipper. (Watch out for the velcor, it must be on the bottom) (PH4)
- OPEN THE ZIPPER (PH5)

- Flip until the outer fabric are right side together (PH6) and the lining are right side together. Match edges and pin. Sew the BOTTOM of the outer fabric and the BOTTOM of the lining. (PH7) Remember to leave a gap on the lining for turning right side out later. (PH8)
- Flip until the 2 seam you just did are above eachother (PH9)
- Pin, then sew both side of the outside fabric, making sure not to include the lining in the seam (PH10 et 11)
- Do the same with the lining without including the outside (PH12 et 13)
- Turn right side out through gap in the lining. Helping you with a pen, push corners out.
- Close the opening in the lining (PH14). And slip the lining in the pouch.
- The velcro should be on the right, centered on the back of the pouch (PH15)

