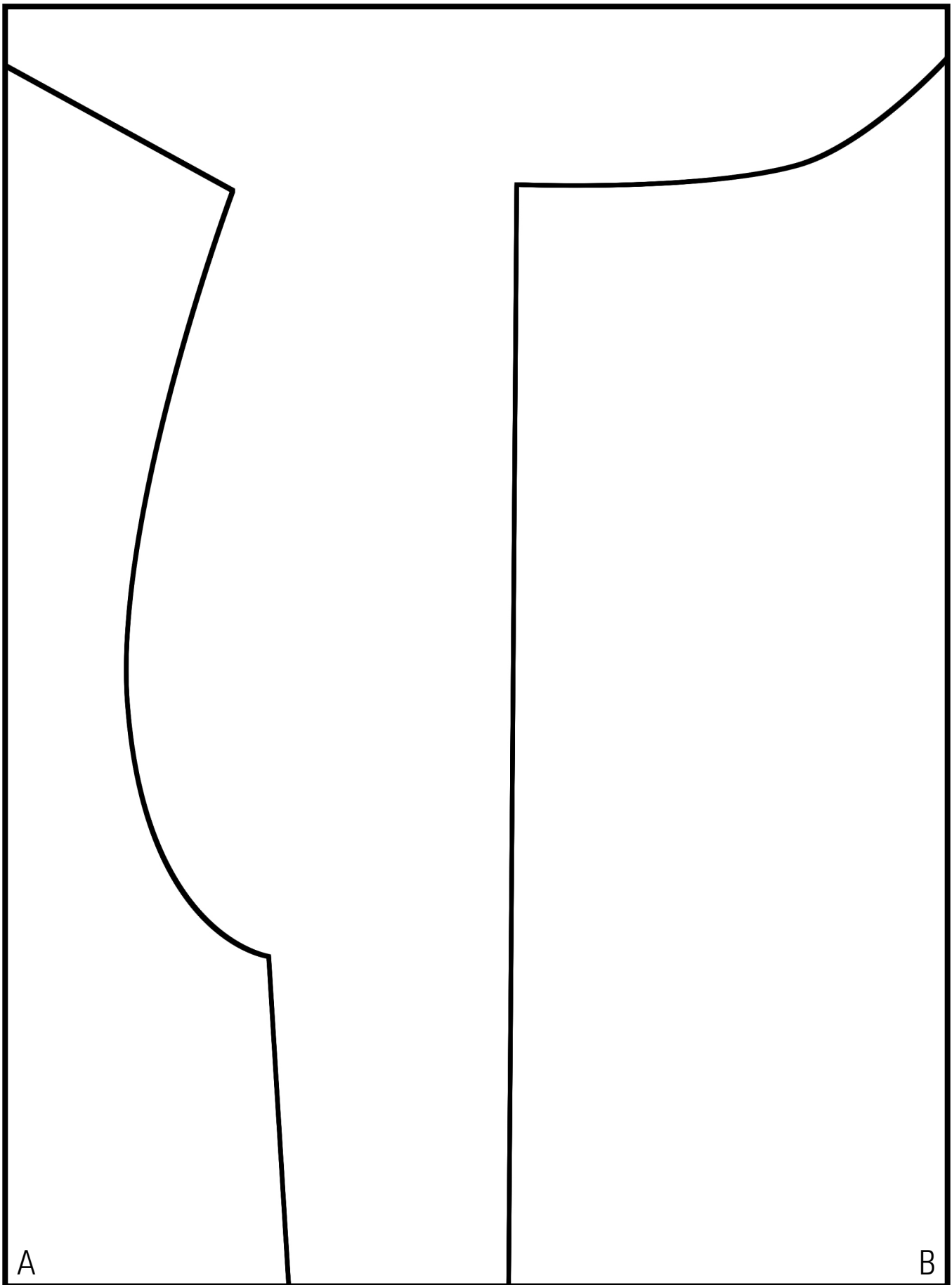
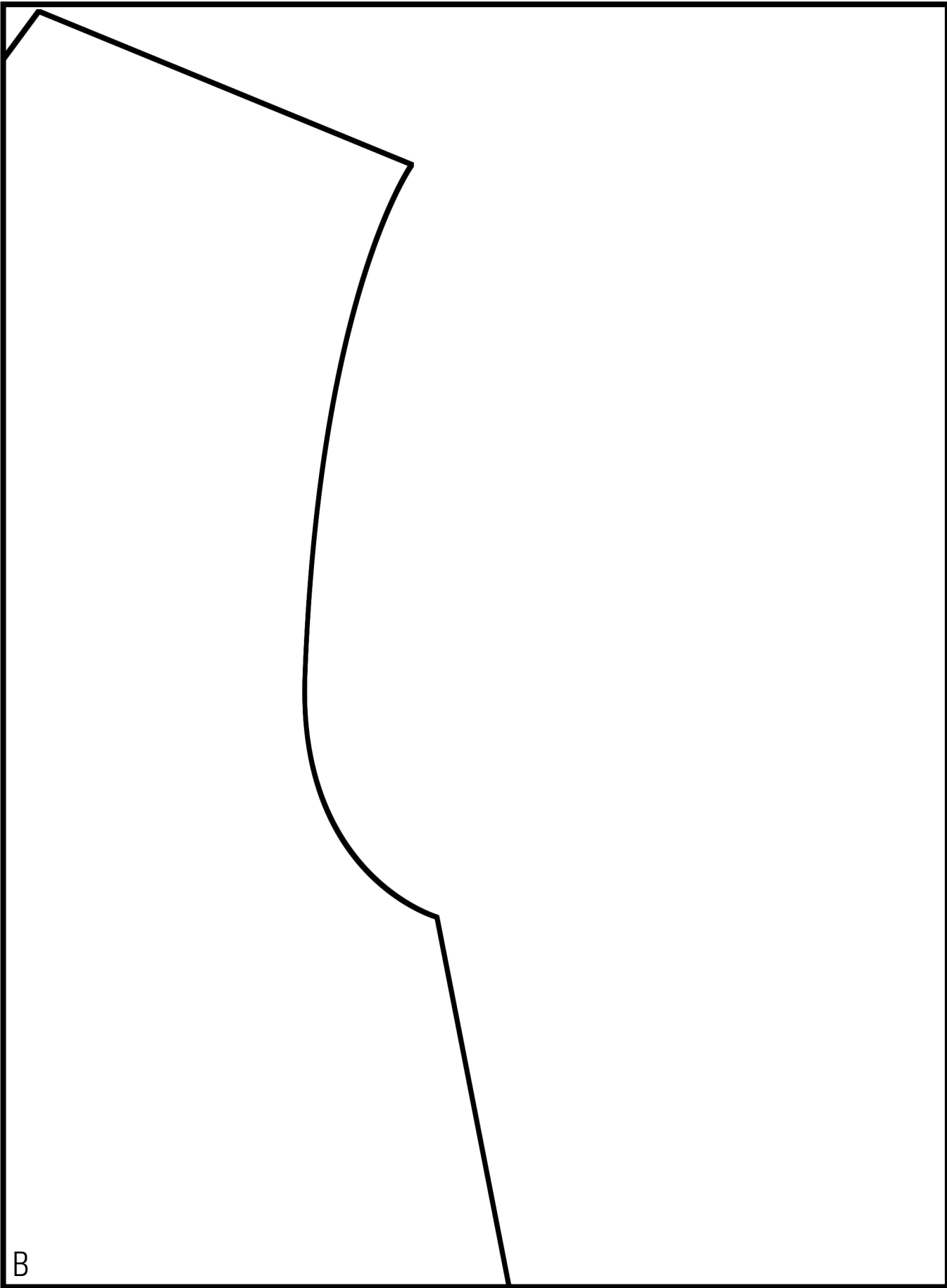


A



A

B



B

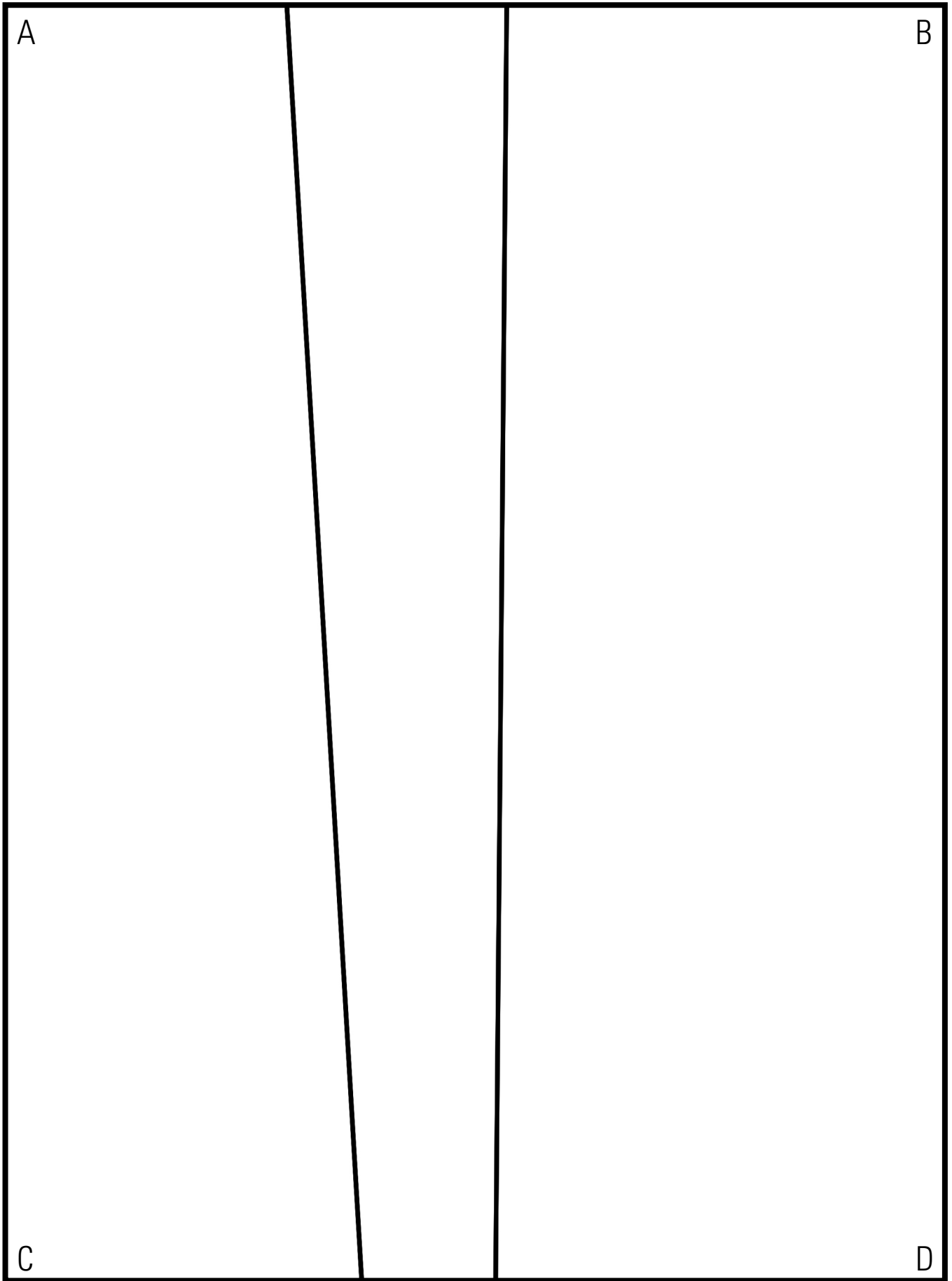
A

un petit design . . . 
<http://unpetitdesign.blogspot.com>

Little Grey Dress

Dress Front
Cut 1 on Fold

C



B



un petit design . . .
<http://unpetitdesign.blogspot.com>

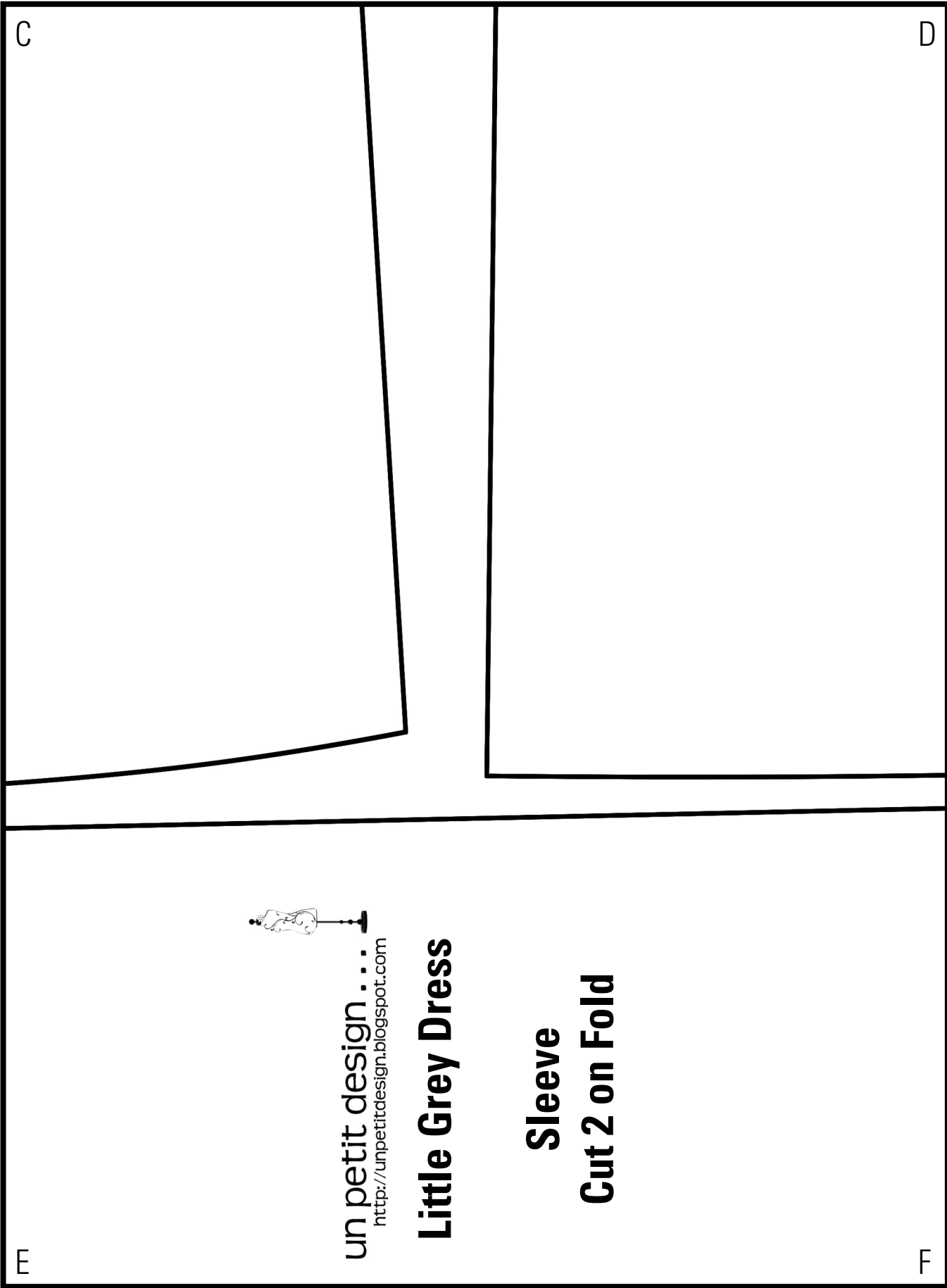
Little Grey Dress

Dress Back
Cut 1 on Fold

D

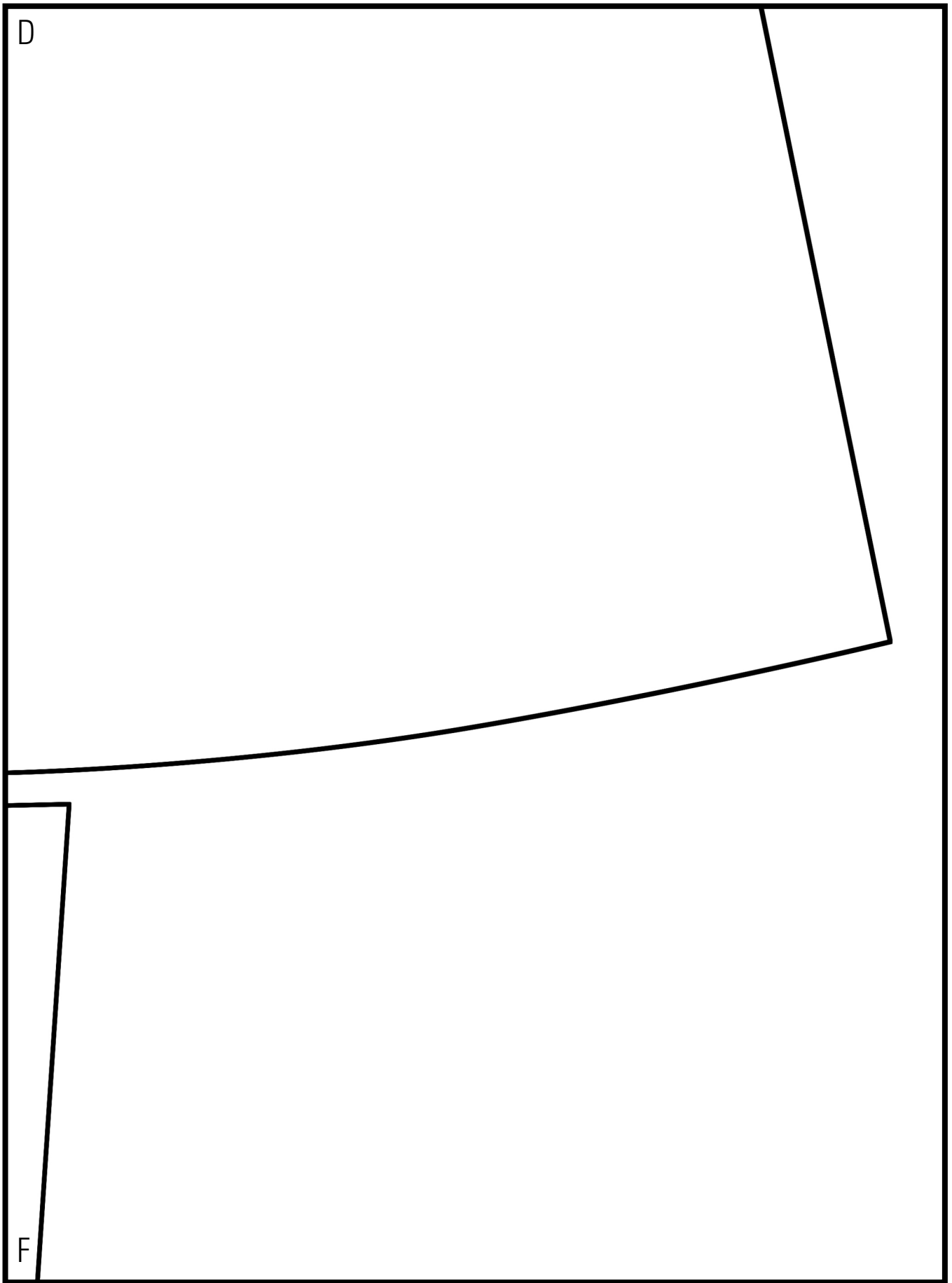
C

E




un petit design . . .
<http://unpetitdesign.blogspot.com>

Little Grey Dress
Sleeve
Cut 2 on Fold

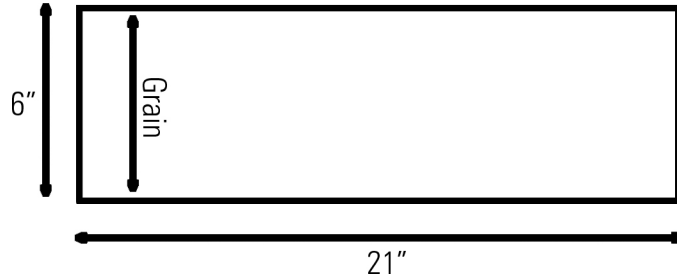


E

E

F

In addition to the pattern pieces outlined, cut one piece 6" tall by 21" long - this will be the neckband piece.



Printed Pattern Layout

1	2	3
A	A	B B
A	A	B B
4	5	6
C	C	D D
C	C	D D
7	8	9
E	E	F F
E	E	F F
10	11	12