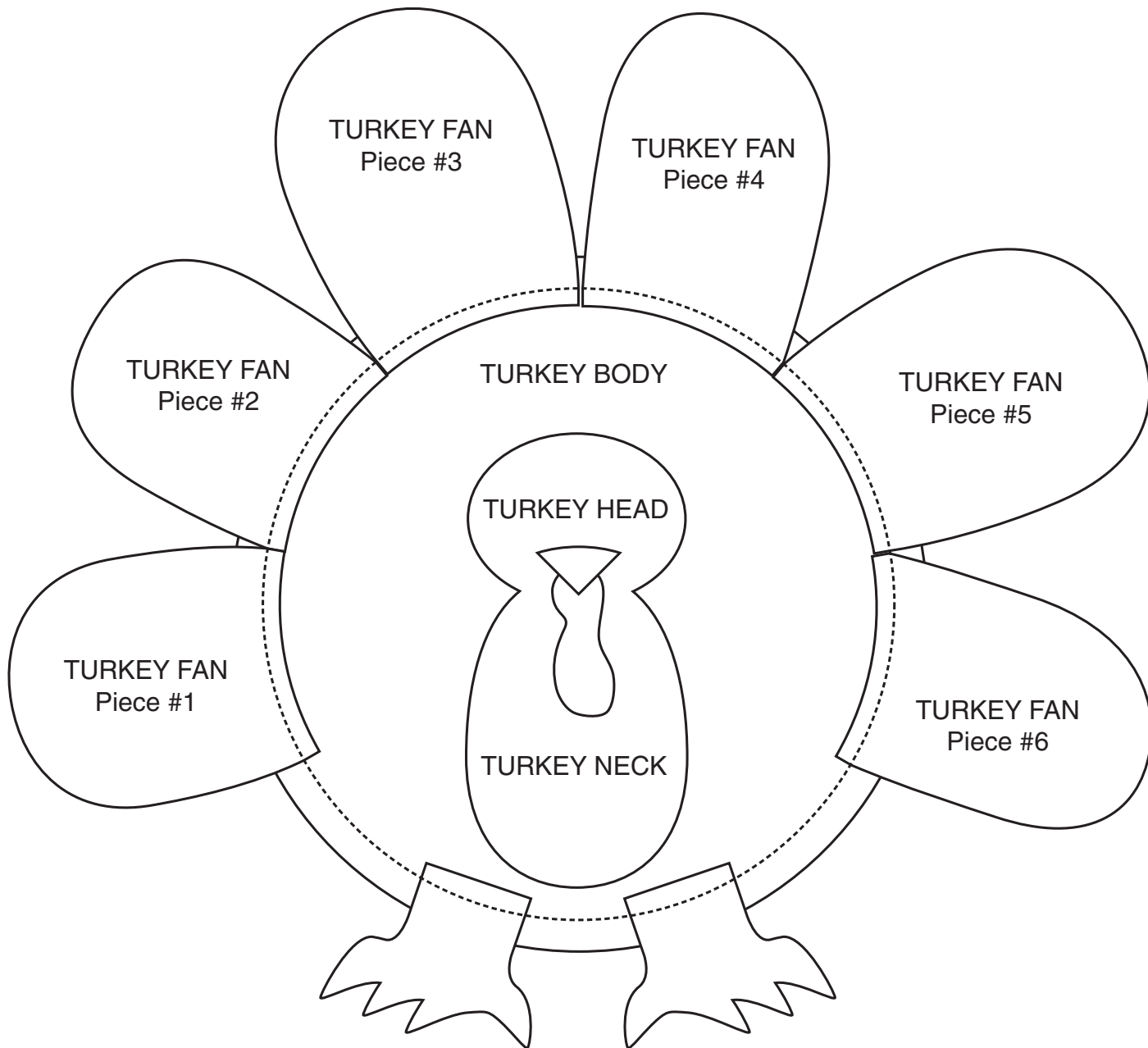
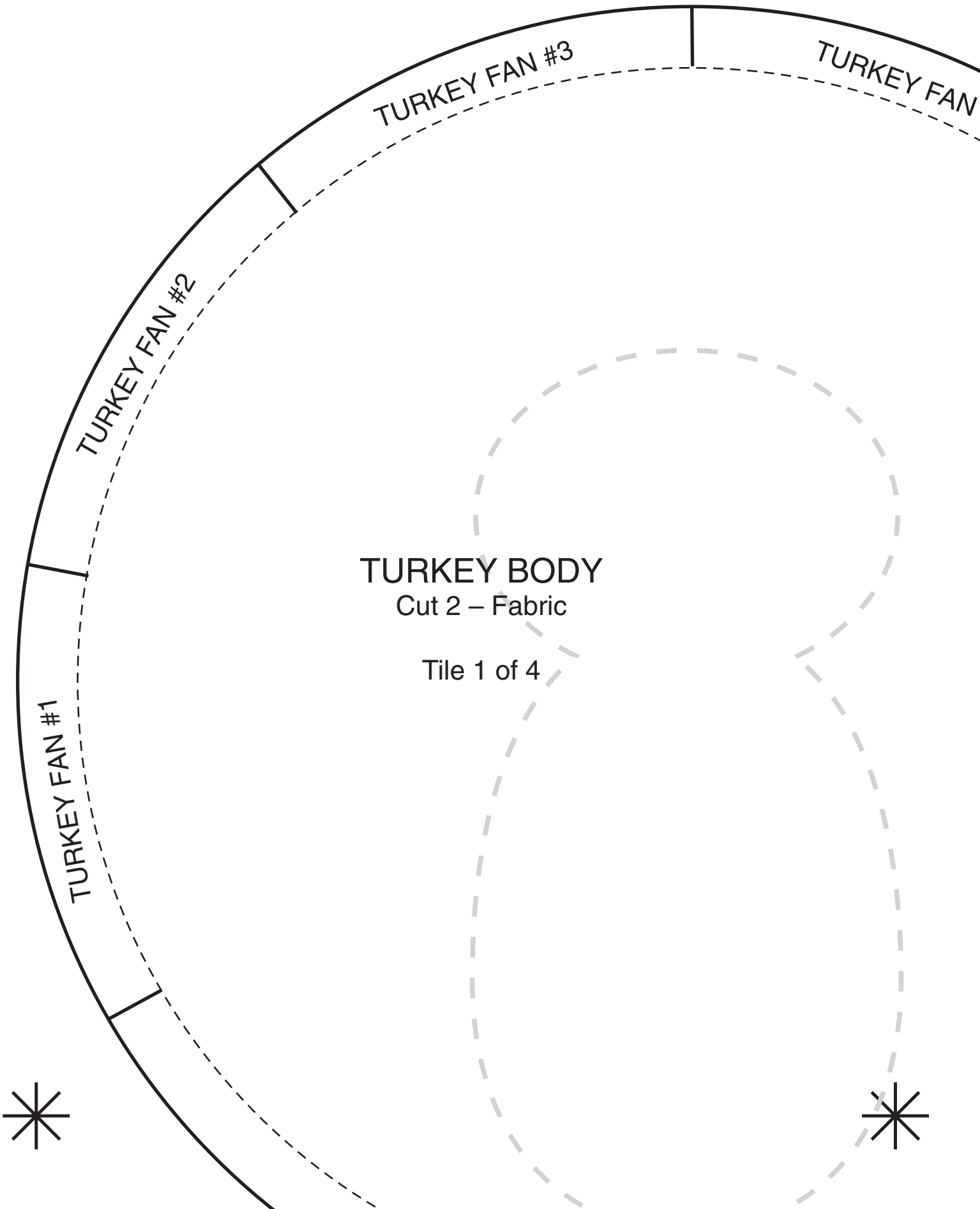


TURKEY DIAGRAM

This diagram is to show the placement of the pieces of the turkey.
This diagram is not actual size.



Line up the stars and tape together to create the pattern in actual size.
Make sure your printer is NOT set to shrink or enlarge image to paper size.



TURKEY BODY

Cut 2 - Fabric

Tile 1 of 4



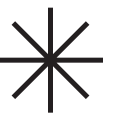
TURKEY FAN #4

TURKEY FAN #5

TURKEY BODY

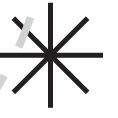
Tile 2 of 4

TURKEY FAN #6





TURKEY BODY

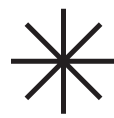
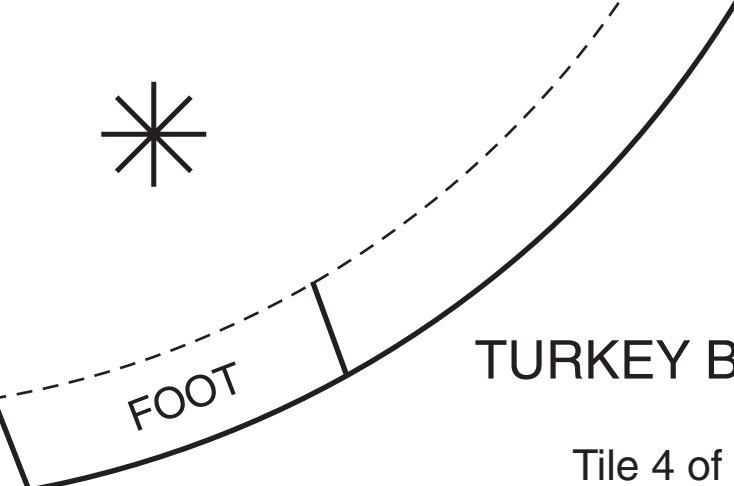


Tile 3 of 4

FOOT

FOOT



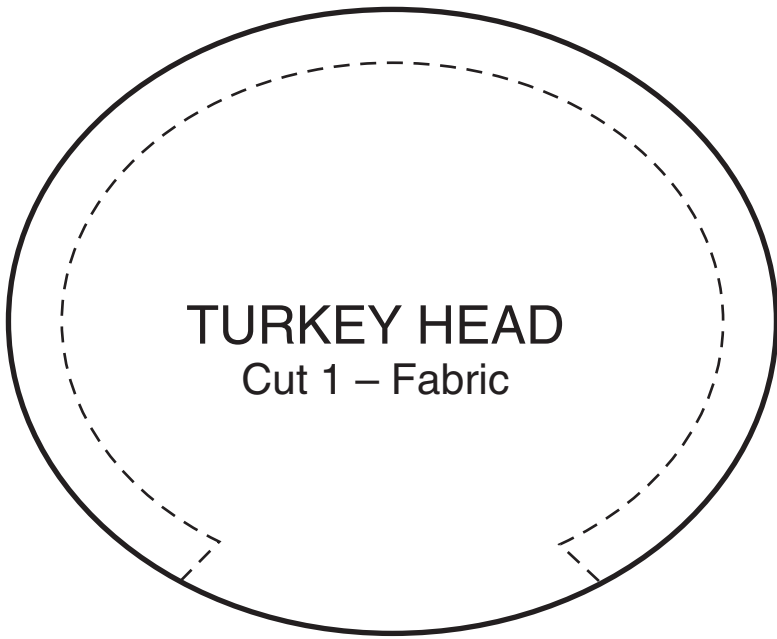


TURKEY BODY

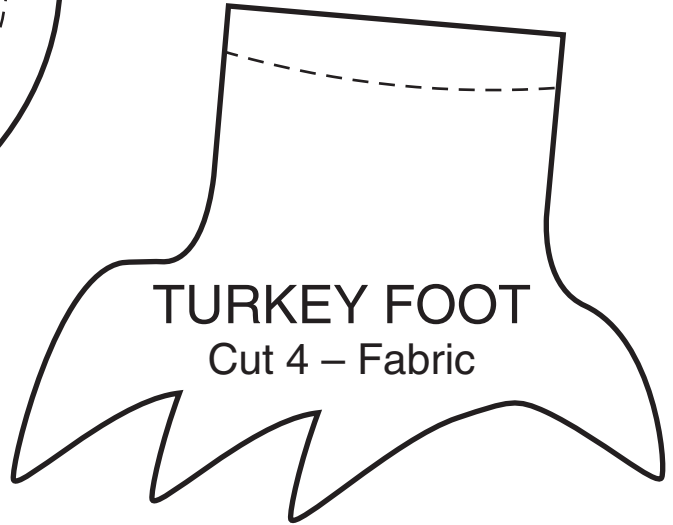
FOOT

Tile 4 of 4

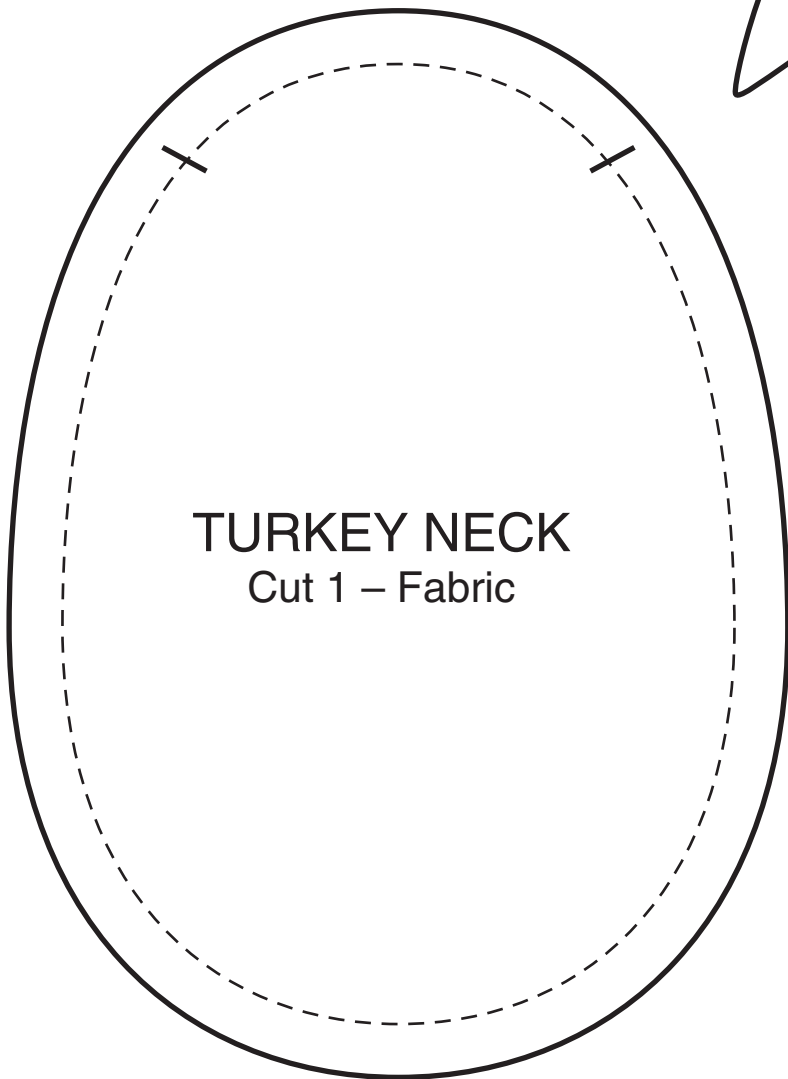




TURKEY HEAD
Cut 1 – Fabric



TURKEY FOOT
Cut 4 – Fabric



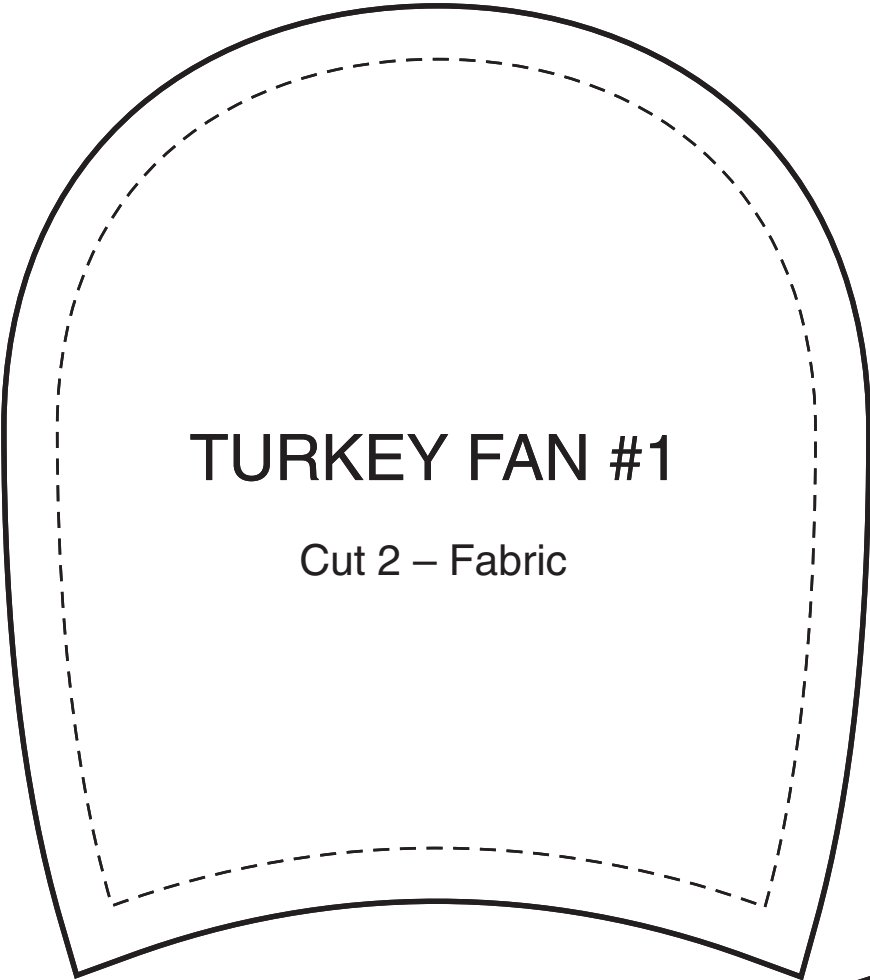
TURKEY NECK
Cut 1 – Fabric



Cut 1 Each – Fabric

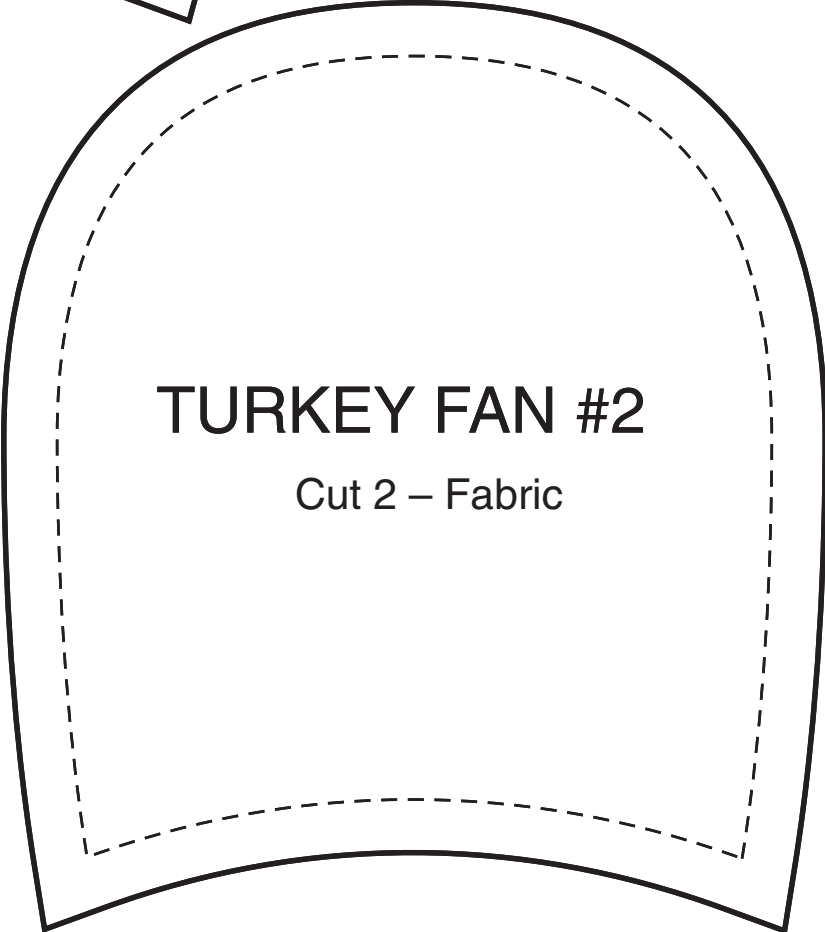


WATTLE



TURKEY FAN #1

Cut 2 – Fabric



TURKEY FAN #2

Cut 2 – Fabric

