

A

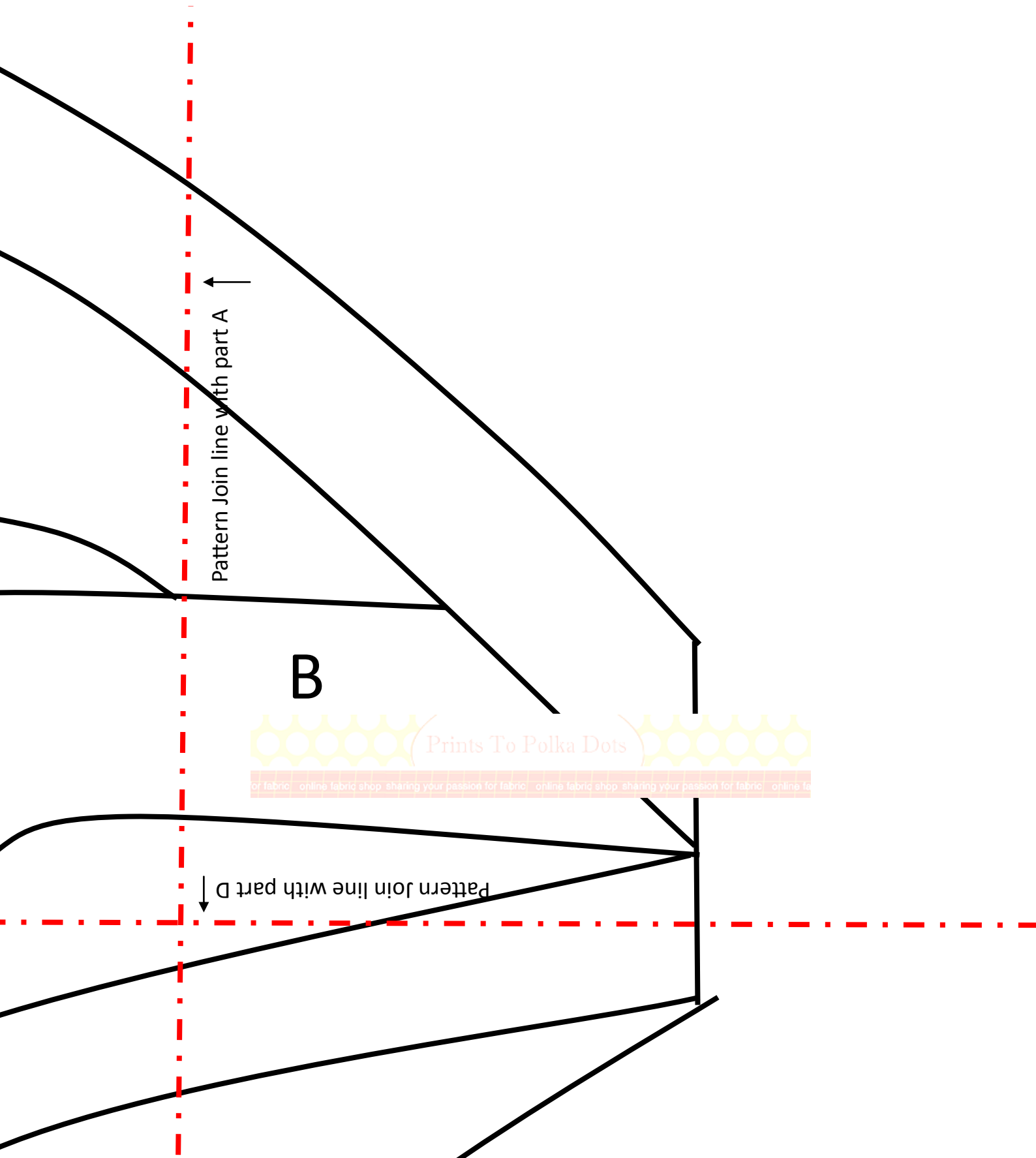
Main Wings

See sewing instructions for how to piece the wings together.

Pattern Join line with part B

Pattern Join line with part C



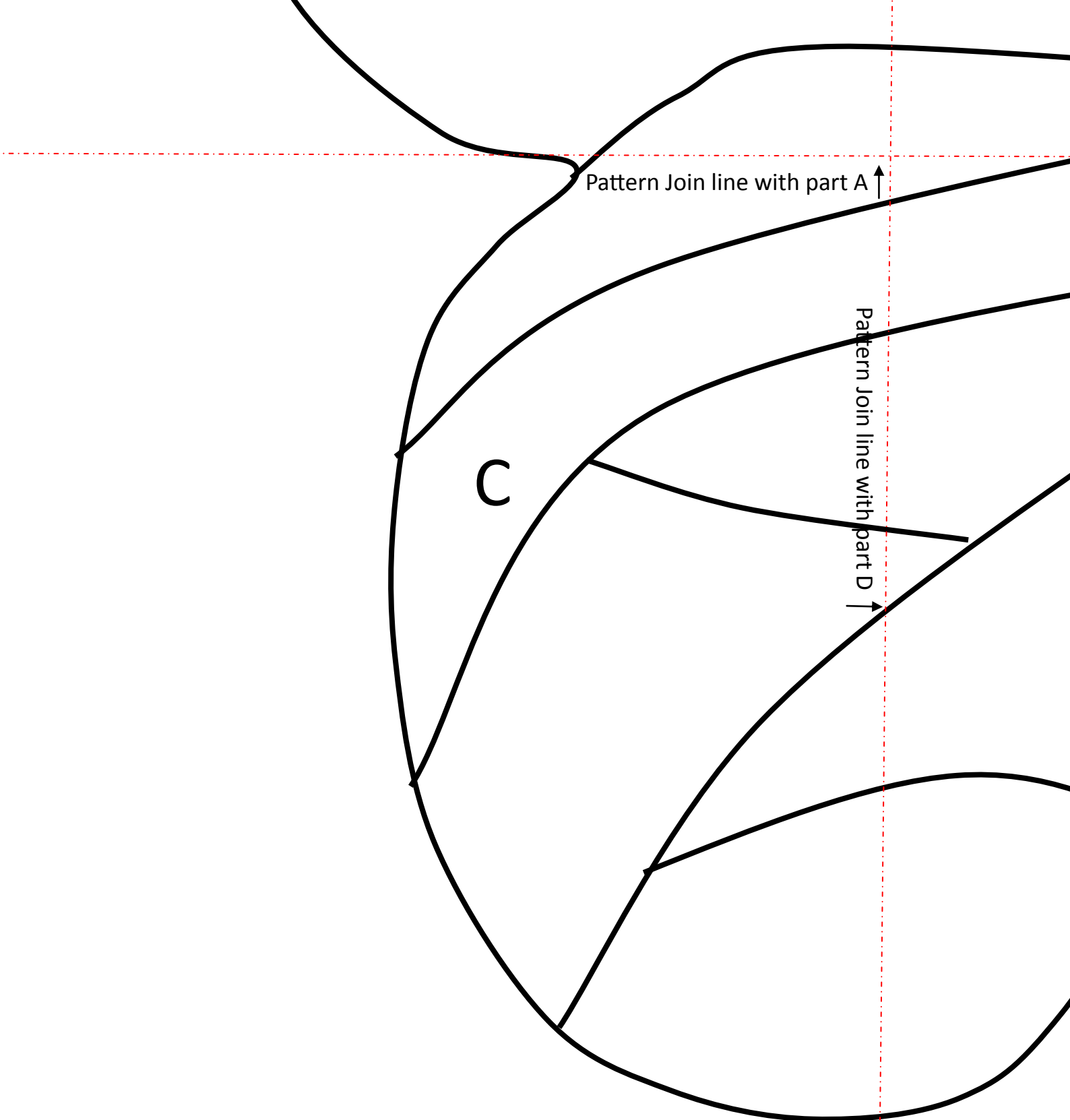


Pattern Join line with part A

B

Pattern Join line with part D

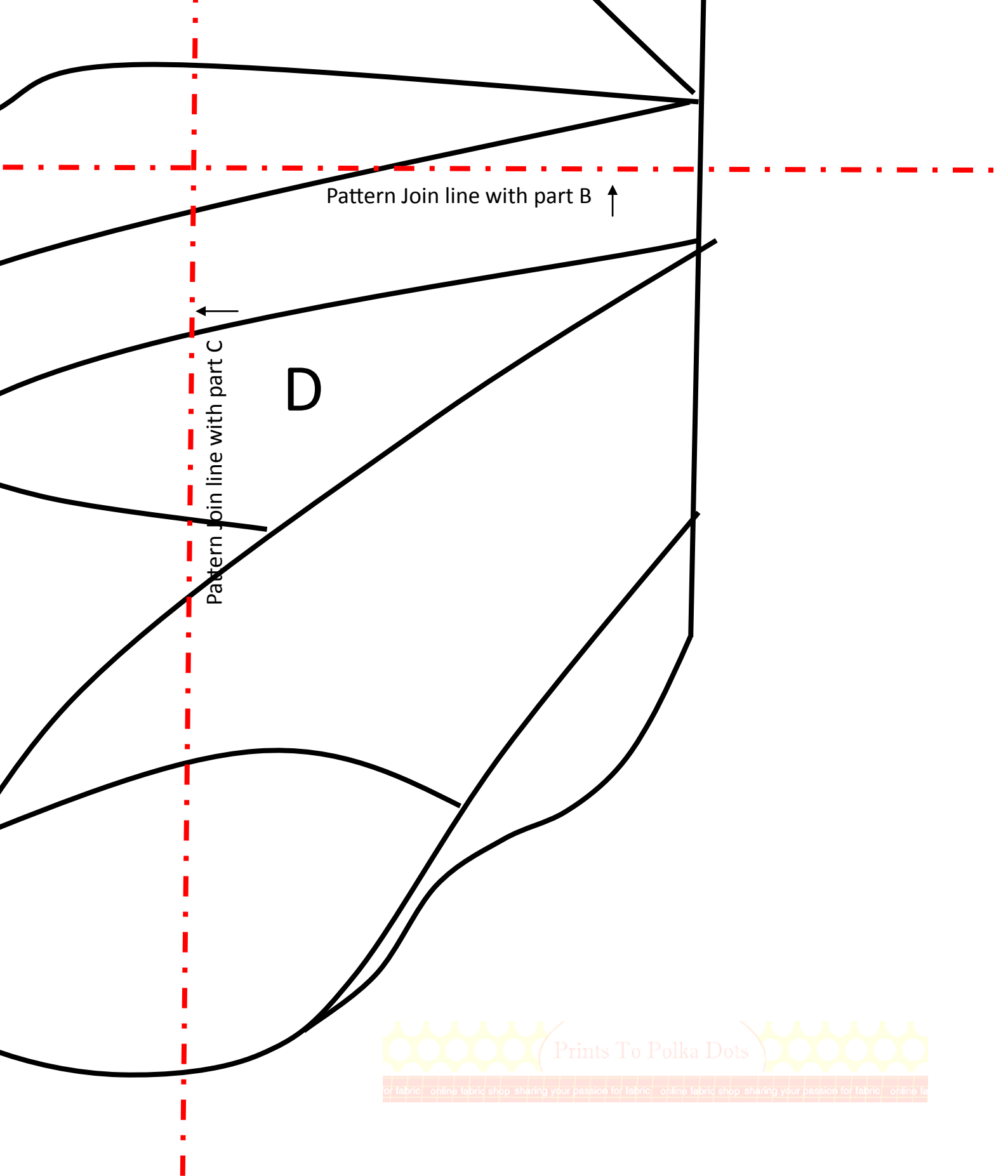




Pattern Join line with part A ↑

C

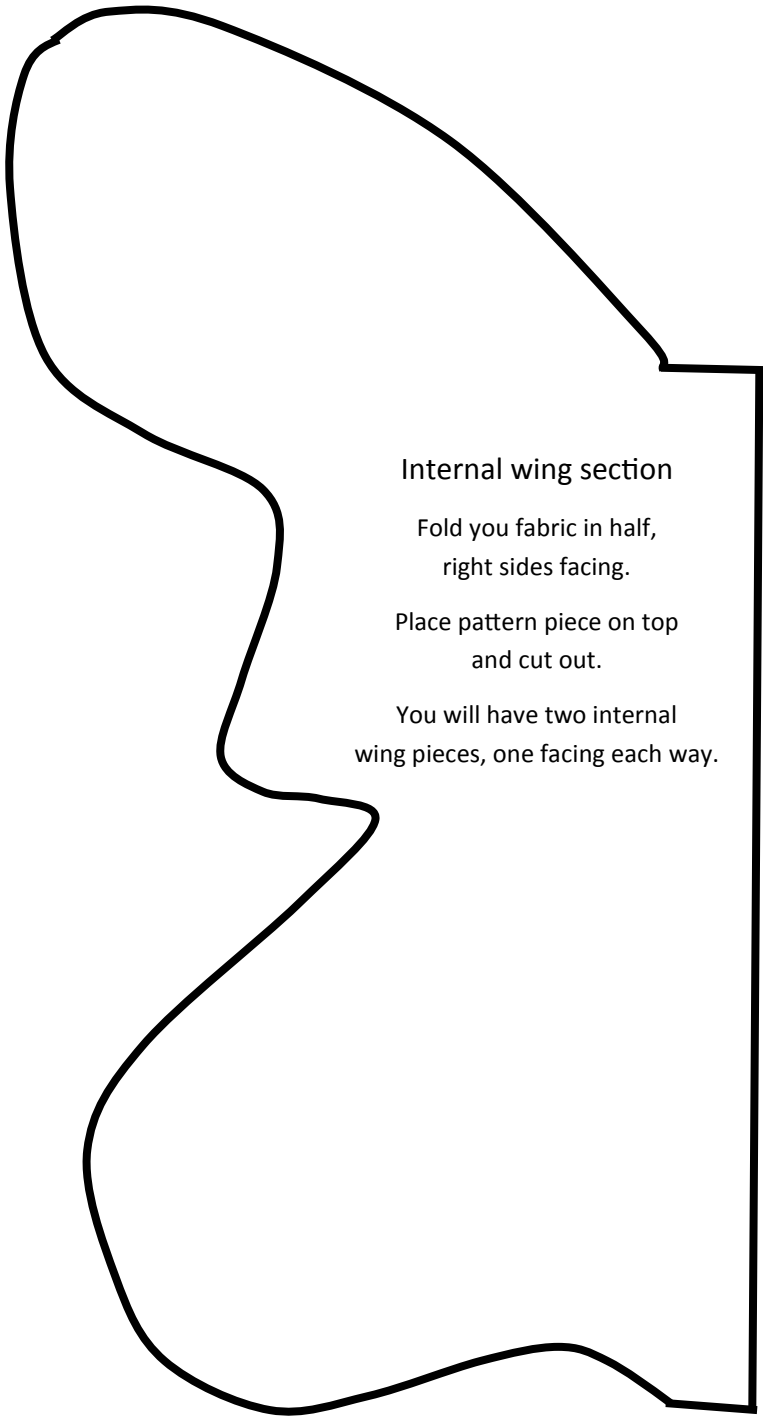
Pattern Join line with part D ↓



Pattern Join line with part B ↑

Pattern Join line with part C ←

D

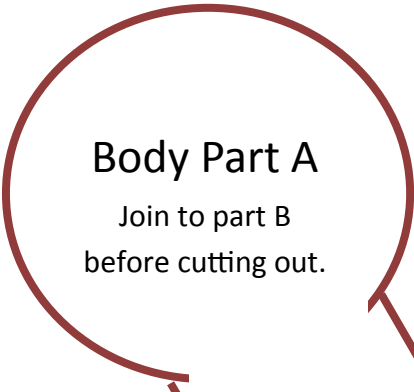


Internal wing section

Fold you fabric in half,
right sides facing.

Place pattern piece on top
and cut out.

You will have two internal
wing pieces, one facing each way.

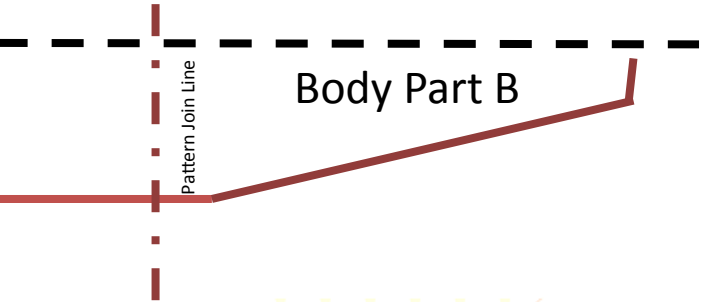


Body Part A

Join to part B
before cutting out.

Fold your fabric in half and place this pattern piece with the dotted line on the fold,
cut out an all sides EXCEPT THE FOLDED SIDE. You will now have 1 body piece.

Fabric Fold line



Body Part B

Pattern Join Line



Pattern Join Line