

MAYFLOWER SHAWL



This shawl is a triangle, worked from top to bottom, increasing 4 sts each RS row so as to spread outward. A knitted-on border completes the shawl.

MATERIALS

Approximately 500yds/457m of sport weight yarn 32"/81cm circular needle size # 7 (4.5mm) or size to obtain gauge Stitch markers Tapestry needle Wires and T-pins for blocking

FINISHED MEASUREMENTS Wingspan 52"/132cm **Height** 25"/63.5cm at center back after blocking

GAUGE

16 sts and 24 rows = 4"/10cm over Stockinette (St) stitch. Take the time to check your gauge.

NOTES

- 1) 2 charts are given for this triangle. Only RS (odd) rows are included in the chart. All WS (even) rows are purled.
- 2) At each end the 3 border sts (garter stitch) and the center stitch (St st) are not included in chart #1.
- 3) Chart #1 is repeated once after the center stitch.
- 4) Both provisional cast on and knit on cast on are used in this pattern.

INSTRUCTIONS

Using a provisional cast on, cast on 3 sts. K 6 rows (3 garter ridges).

Start shaping Next row (RS): K3, place marker (pm), pick up 3 sts along the garter strip (1 st per garter ridge), pm, K3 sts from provisional cast on = 9 sts **Next row (WS):** K3, slip marker (sm), P1, pm, P1, pm, P1, sm, K3.

Establish chart #2 pattern Row 1: K3, sm, chart # 1 row # 1, sm, K1, sm, chart # 1 row #1, sm, K3. **Row 2:** K3, m, P across to last m, K3. Continue working chart in this manner, keeping 3 first and 3 last sts in Garter st, and center stitch in St st all along. **Row 94 (WS):** K3, remove marker (rm), P90 sts, pm, P5, rm, K1, rm, K5, pm, P90, rm, K3. You now have only 2 markers around the center 11 sts and a total of 197 sts on needle = 3 sts (border) 95 sts (half triangle), 1 center st, 95 sts (second half triangle), 3 sts (border).

KNITTED-ON BORDER Note: You will K2tog the last st of the border and the first live st of the triangle (attaching border to main piece) and after turning work, you will slip the obtain stitch purlwise. **Next Row (RS):** Using the knit on cast on method, cast on 22 sts. Do *not* turn. K21 of the cast on sts, K last st of the new cast on sts with the first LIVE stitch from triangle, turn work **Next Row (WS):** Slip first st, K21. Repeat last 2 rows once.

Begin chart #2 All RS rows: Follow chart # 2, K2tog last border st with next LIVE triangle st. **All WS rows:** Sl1. P all sts across the row. Continue in this manner until you reach to the first marker.

Shape the point of the shawl as follows:

Following the chart:

Rows 1 and 3: attach to the main triangle

Row 5: Work to last stitch, do *not* attach to the triangle, turn, P back

Row 7: Work and attach.

Row 9: Work to last stitch, do *not* attach, turn, P back

Row 11: Work and attach

Row 13: Work to last stitch, do *not* attach, turn, P back

Row 15: Work and attach

Row 17: Work and attach

Row 19: Work to last stitch, do *not* attach, turn, P back

Row 21: Work and attach

Row 23: Work to last stitch, do *not* attach, turn, P back

Row 25: Work and attach

Row 27: Work to last stitch, do *not* attach, turn, P back

Row 29: Work and attach

Row 31: Work to last stitch, do *not* attach, turn, P back

Row 33: Work and attach

Row 35: attach to the main triangle. Remove marker

Work chart # 2 attaching all RS rows until 3 LIVE sts are left on Triangle.

Next row (RS): K all sts attaching last st with triangle.

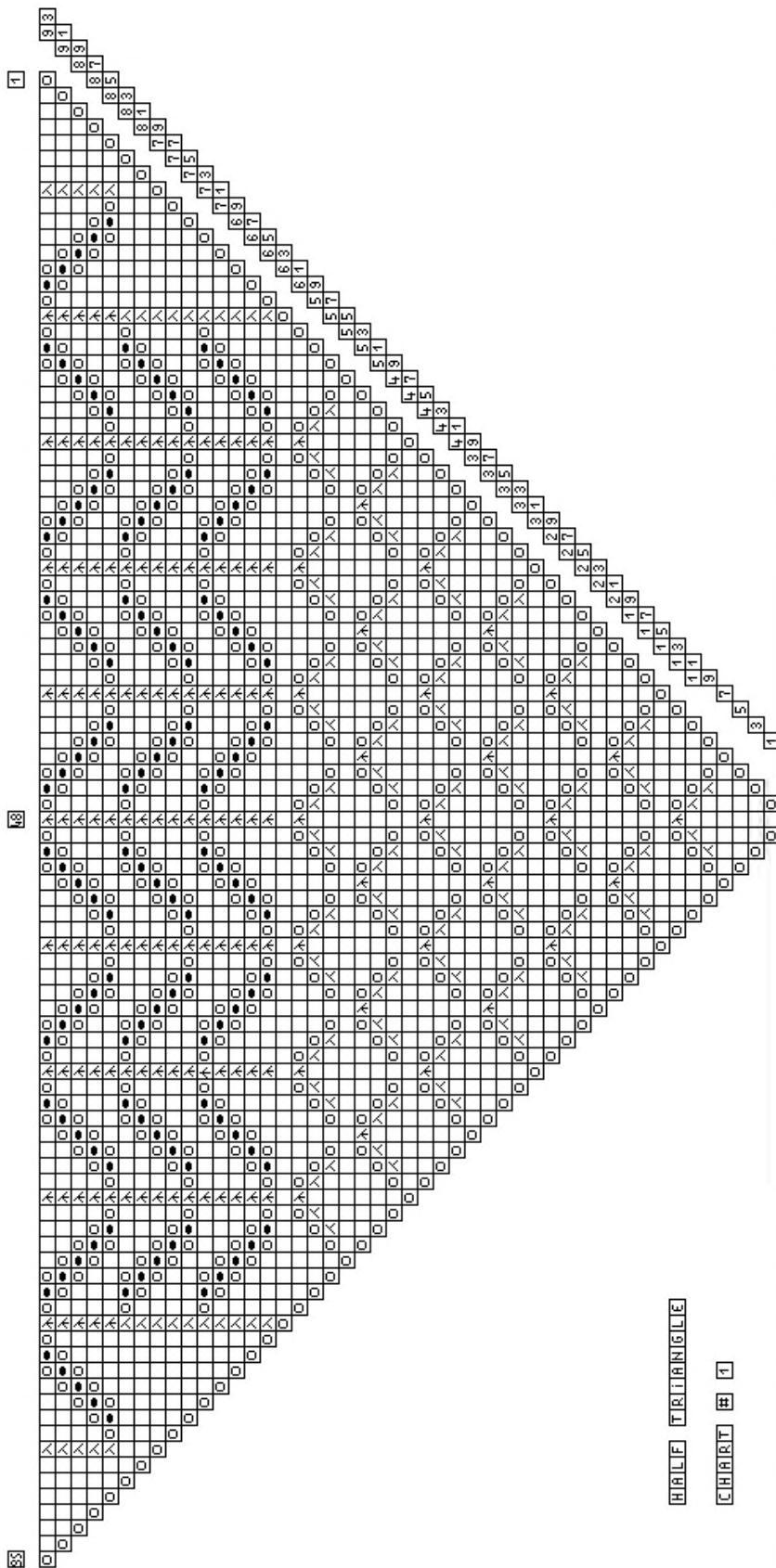
Next row (WS): Sl1, K back

Repeat those 2 rows once. Repeat first row once again.

Bind off all sts knitwise on WS.

FINISHING

Block shawl to measurements.

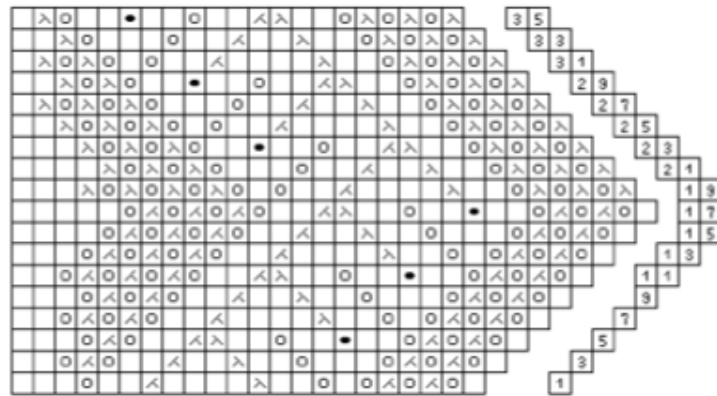


HALF TRIANGLE

CHART # 1


BORDER


CHART = 2




Stitch Key

 Knit

 Make Bobble (Knit in front, back, front of stitch, turn, P3, turn Sl1,K2tog, Passo)

 Yarn over

 K2tog

 SSK

 Sl1. K2tog, Psso