

'THE MADELINE' DRESS



E-PATTERN, 2 - 6 YRS.

MeSewCrazy





Description:

This sophisticated dress is absolutely stunning upon completion. With a fully lined outer sloped bodice, as well as a fully lined underneath bodice and skirt layer, you will absolutely love this little number.

The full skirt, button back with open collar, and sloped front will give you a one of a kind dress that you won't find anywhere else!

An optional shoulder bow is shown at the end for an additional touch of whimsy.

With 2 alternate methods for preparing the bodice, you can choose which option is best for you and your skill level and tools on hand.

Either way, you will have a completely professional looking dress which you and any little girl will love.

Skill Level - this pattern would be for the 'experienced-beginner' and up. Without any zippers or other items that are normally reserved for a more experienced sewist, I put this at a 'beginner' level. But I wouldn't recommend it for your first sewing project. Someone who knows their way around the sewing machine would feel comfortable with this pattern.

How to Use this Pattern:

This pattern is a downloadable PDF, your printer needs to be set to NO SCALING (Print at 100%).

Lay out the pieces of paper and match paper corners to corresponding letters.

Do NOT overlap the paper. Simply butt up next to each other, and tape together.

See the following page for printing out your pattern size instructions.

Supplies:

- 1.5 - 1.75 yd Exterior Fabric
- .5 yd Lining Fabric
- Scrap Interfacing
- 2 or 3 Buttons
- Basic Sewing Essentials (sewing machine, thread, etc)



Fabrics:

Cotton & cotton blends, seersucker, muslin, broadcloth, lined eyelet, lightweight denim, linen & linen blends

Cutting out the Pattern:

Print out the Pattern at 100% (DO NOT SCALE!)

For pattern pieces, print page range: 29 - 32

Cut out the pieces as instructed on the Pattern Pages
You will have:

- (2) Front Arced Bodice
- (4) Back Arced Bodice
- (2) Front Lining Bodice
- (4) Back Lining Bodice
- (2) pieces of interfacing

Cut skirt pieces as follows:

Skirt Front:

Cut (1) of Fabric:

2T: 44"W x 12"L

3T: 44"W x 13"L

4T: 44"W x 14"L

5T: 44"W x 15.5"L

6T: 44"W x 17"L

Skirt Back:

Cut (2) of Fabric:

2T: 22"W x 12"L

3T: 22"W x 13"L

4T: 22"W x 14"L

5T: 22"W x 15.5"L

6T: 22"W x 17"L

Please see next page for additional SKIRT SIZE / CUTTING INFO

SIZE CHART

SIZE	2T	3T	4T	5T	6T
CHEST	21	22	23	24	25
HEIGHT	35"	38"	41"	44"	47"

DRESS IS A SHORT 'VINTAGE' STYLE

If you want a longer, below knee length, please cut the following:

SKIRT CHART

SIZE	2T	3T	4T	5T	6T
Front (cut 1)	44"w x 16"l	44"w x 16.5"l	44"w x 17"l	44"w x 19"l	44"w x 21"l
Back (cut 2)	22"w x 16"l	22"w x 16.5"l	22"w x 17"l	22"w x 19"l	22"w x 21"l

**Please note - This is a very FULL skirt. Please feel free to adjust the width as needed.

Sewing it Together:

Cut out pattern pieces from your fabric as instructed.

Please note, there are two methods for sewing this bodice together, please review both options and choose which works best for you.

Bodice Sewing Option 1:

Works best for a person with a serger. I like this method because it provides perfect armholes easily.

1. Taking your pieces of interfacing, follow interfacing instructions to adhere it to the **WRONG** side of (2) back bodice lining pieces, along the back center.

Set aside for now.



2. Using only 1/4" seam allowance, take (2) Back bodice ARC pieces and sew along back edge and bottom arc. (Do not sew side seam, or along the top edge - **JUST** the back center and bottom arc)

Turn and Press. Repeat for other (2) Back bodice arc pieces.



You should now have this:

You may want to edge stitch your Pressed seams for a more professional look.

3. Place (2) Front Bodice arced pieces right sides together, matching up raw edges



Using only 1/4" seam allowance, pin and sew along the bottom edge.

Trim seam as close to sewn line as you dare, this will allow the bodice to be pressed flat without extra bulk.

Turn right side out and press. Edge stitch along bottom pressed arc edge if desired.

Now we are going to be basting (1) of the front and back lining pieces to the inside of these arc pieces at the shoulder seams.

Follow along on the next page...



4. Take (1) Bodice front lining piece and attach to the Front Bodice arc piece (*attach to your less perfect arc side if you have one*).

The bodice lining should be right sides together with the back side of your arc piece.

Baste stitch at shoulder seams, in seam allowance.

Repeat this process for the Back Bodice arc pieces and (1) back lining piece for both back arc pieces.

Once again, with the Back lining piece right sides

sides together with the back side of your arc pieces. Baste stitch at shoulder seams.

5. Now take your front & back Bodice arc pieces and place right sides together (*with the basted lining on the outside*).

Sew at shoulder seams.





You should now have something that resembles the top image on the left.

6. Take your remaining front bodice lining piece and sew right sides together with the (2) back bodice lining pieces at shoulder seams.

See below image on left for what you will now have.

We are now going to work at attaching these 2 pieces together.

7. Take your separate lining, and place right sides together along the top of the arced side of the arced bodice.

Pin around the back center edge and neckline.

See next page for note before you sew



***Note - when pinning the back center seam together, be sure NOT to pin the arced piece. The back center pieces will include only the lining pieces. When you make your way up to the neckline, the arc pieces will then be included in the middle of the pins.

Since you sewed the arc pieces together before, they will be naturally shorter than the lining pieces, this should not be a problem.***



After you have sewn around the back center and neckline, trim seam allowance as close to sewn edge as you dare.

This will once again help the neckline to lay flat and be less bulky.

8. Without moving your bodice piece, simply pin the armholes together.

Be sure to capture all of the fabric in your pins. Sew.

Clip seams as we have been doing.





9. Now, this is going to seem weird, but trust me - it works!

You are going to turn the bodice right side out by pulling the back bodice out through the shoulder seam.

*Note - If your fingers are hitting a sewn seam when reaching through shoulder seam to get at fabric, turn the bodice over and use other side.

Once you have it turned right side out, stick your finger or a blunted edge inside bodice and push out corner seams. Press.

Now lets get those side seams sewn together.

There will be a lot of photos in the next few steps to be sure you can follow along...





- Now, fold down the back bodice piece so that the arc pieces match up front sides together, with the side seams matching.



Fold up ONLY the front & back lining pieces, leaving the arced pieces down.

This will match up the armhole seam in the center, with the arc pieces on the bottom - and the lining pieces on the top.

Pin and sew.

See more photos on the next page...



Here is another set of images for this process - with different colored fabrics used for the lining pieces and the arced bodice pieces to help illustrate the separation of the fabrics.

Once you have them pinned together, sew the side seam together and finish the seam edge with either a serger, or zig zag stitch.



Repeat for other side seam.



And just in case you were wondering...

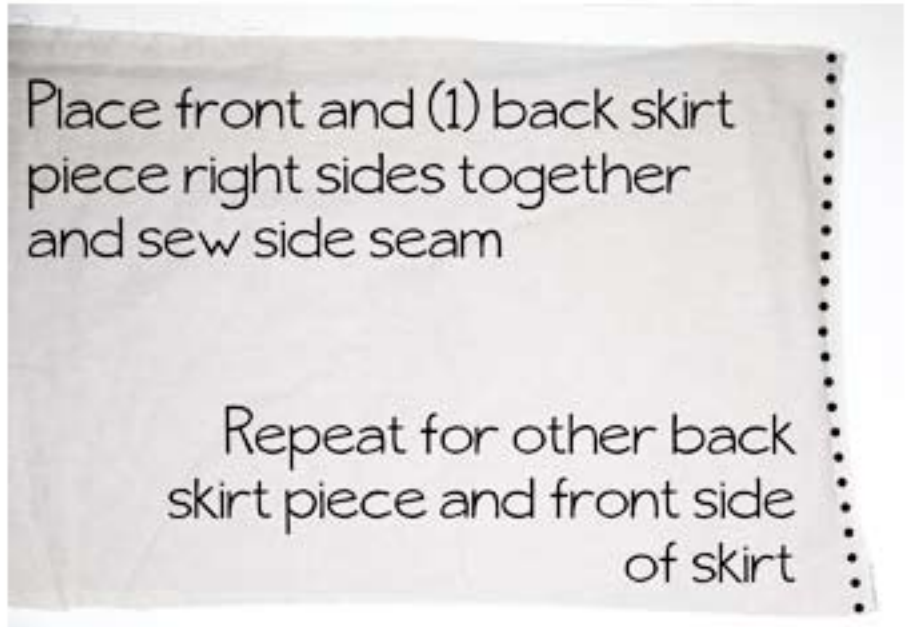


Moving on...

Assembling the Skirt:

11. Take your front skirt and (1) back skirt and place right sides together - matching side seams.

Pin and sew along side edge. Finish seam edge, and repeat for other side.



Take the other side raw edges on the back skirt panels, the ones not sewn together yet, and finish them with either a serger, zig zag stitch or pinking sheers.



Fold the skirt right sides together, matching up the back side seams.

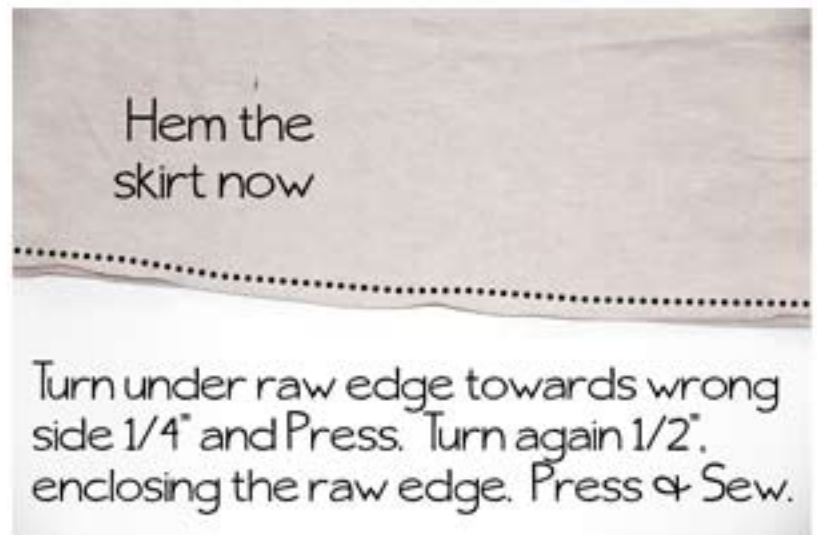
Leaving 3" unsewn from the top of skirt seam, sew down the back center.



Press the back skirt seam open.

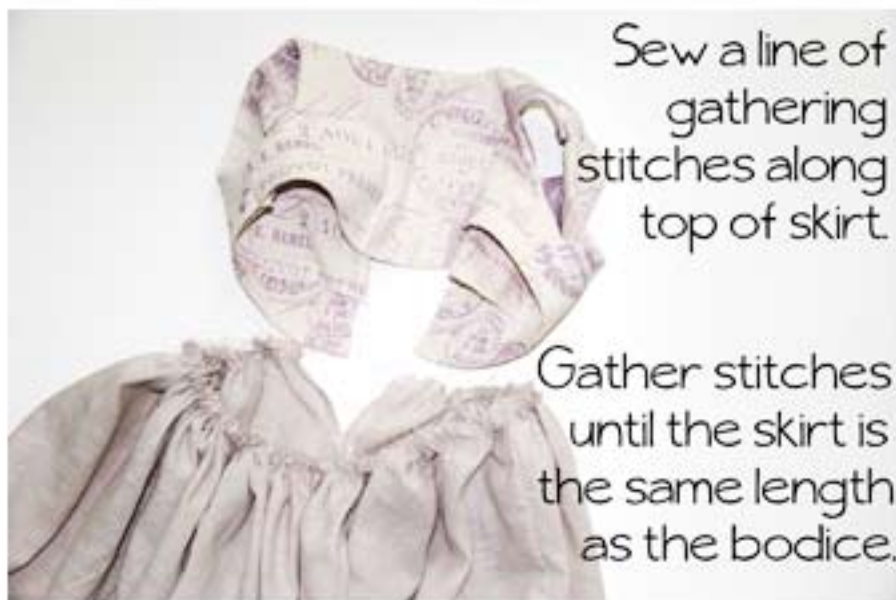
Sew around the 3" opening, securing the seam in place.

I happen to prefer hemming the skirt now, finding it to be easier to work with the material prior to all of the gathers being in place.



12. Turn under the skirt's raw edge 1/4" towards the wrong side of fabric and Press.

Turn under again 1/2" & Press. Sew to secure.



13. Sew a line of gathering stitches around the skirt's top edge.

Pull bobbin threads until the skirt is the same length as your bodice. Keep skirt gathers as even as possible.

Attaching the Skirt to Bodice Option 1:



14. Turn up the bodice arc pieces, revealing the lining pieces underneath.

Turn up the bodice, so that the bottom of the bodice lining is right sides together

with the top of the skirt's right side edge.

Match up back and side seams, and pin into place.

Sew around edge.

Finish seams with either a serger or zig zag stitch, and Press.



You are almost done now...

Flip up your bodice, turn down your arc pieces and admire your handy work so far.

We are almost done.

Lastly, we will add some buttons and buttonholes.



15. Use your machine's buttonhole maker to sew on buttonhole's accordingly to back bodice lining.

Sew buttons on the other side of the back bodice lining, matching up with the buttonholes.

And if you chose Option 1 for the bodice, you are now finished!

For shoulder bow embellishments, skip forward to Page 25.

To complete this dress using Option 2 for the bodice assembly, read on.

Bodice Sewing Option 2:

Works best for someone who doesn't mind taking a little more time in their sewing to get a perfect end product. Some hand stitching may be required to get perfect armholes. And all bodice seams will be completely concealed.

1. Taking your pieces of interfacing, follow interfacing instructions to adhere it to the **WRONG** side of (2) back bodice lining pieces, along the back center. (See photo on page 6).

Set aside for now.

2. Take (1) Front Arc bodice piece and place right sides together with (2) of the Back Arc Bodice pieces on each side.

Sew at the shoulder and side seams.



Repeat for other arc bodice pieces, giving you 2 sets.

We are now going to sew these together.



3. Take your 2 arc bodice pieces and place right sides together, matching up all raw edges.

Pin around sides and bottom and sew using 1/4" seam allowance.

Do not sew top!

Turn right arc bodice right side out. Either use your fingers or a blunt edge to push out corners.

Press.

Edge stitch around sides and bottom if desired.



4. Take (1) bodice front lining piece and place right sides together with (2) bodice back lining pieces on each side.

Sew at shoulder and side seams.



Repeat for your other bodice back lining pieces and front piece.

You should now have 2 sets like the photo on the left.

5. Take your 2 bodice lining sets and place right sides together, matching all seams and raw edges.

Pin and sew the outer side edges together.



Turn the bodice lining right side out and Press outer edge seam.

At this time, take the bottom edge of your bodice lining and Press under, towards the wrong side, 1/2" all around.

Place the lining bodice around the exterior arced bodice, & pin along neckline edge



6. Begin with your arc bodice right side out, and your lining bodice wrong side out.

Slip the lining over the arc bodice, matching up raw edges at neckline & shoulder seams.

Pin along neckline edge. (Your arc bodice is sandwiched in between your lining bodice).

Sew along the top edge of the neckline, using your 1/2" seam allowance.

Clip seam allowance as close to sewn line as you dare, cutting down on bulky seams and helping the neckline to lay flat.

Sew along top neckline edge



Turn right side out pressing neckline, with lining bodice inside arced bodice



Turn fabric right side out, pushing the lining bodice inside the arc bodice.

Press the neckline edge.

Do not edge stitch!

7. We are now going to finish the armholes.

Matching up the side seams on your lining and arc bodice, fold in both edges towards the wrong side, sandwiching them in the middle of the lining bodice.

This encloses the raw edges completely. Pin all around.

Repeat for both armholes on the bodice.



How you finish your armhole seam is completely up to you.



If you are extremely confident in your sewing skills, you can use your machine to edge stitch closed.

I tend to lean towards whipstitching them closed, thereby ensuring that I catch all the fabric with my needle.





You should now have a completed bodice.

Now skip back to:

Page 15 - 16

Sections 11 - 13

to assemble the skirt for this dress.

Attaching the Skirt to Bodice Option 2:

8. Once you have the top of your skirt gathered, and the same length as the bottom of your bodice lining, match up the back seams and side seams.



Slip top of skirt

1/2" inside the bottom of the bodice lining. Pin all around and edge stitch 1/8" away from bottom lining edge. This will should catch both sides of the bottom of the lining bodice in your stitches, and enclose all raw edges.

Turn the bodice lining down, and you are finished! Continue on for dress shoulder bow embellishments.

Optional Shoulder Bow Embellishment:

Cut 4 strips of fabric, (2) for bow, (2) for center



1. Cut (4) strips of fabric:

- (2) 3"W x 4"L
- (2) 3"W x 9"L

2. Now fold each fabric strip in half lengthwise, right sides together.

Sew along outer raw edges, using 1/4" seam allowance.



Turn each fabric tube right side out.

Press so that the seam is in the center back.

You will now have 4 fabric tubes.



Take the long bow piece and fold in on itself, so that the ends meet in the back on the center.
Sew a line together down the center.

3. Take (1) of the longer fabric tubes, the main bow piece, and fold in on itself.

The back seam is enclosed, and the raw side edges meet and overlap in the center.

Sew a line down the middle center to secure raw side edges in place.

To attach the middle of the bow:

4. Pinch the center of your bow together in the middle.

We are now going to wrap (1) of the smaller bow fabric tubes around the pinched middle to secure.



See next page for instructions and photos...



5. Take (1) smaller bow fabric tube and place 1 raw side edge along the back of your pinched bow center. (Back center seam is against bow).

Wrap tube around pinched bow center, tightly, continuing until you are all the way around. Your back raw edge will be enclosed, and the tail of the bow center will be hanging down.

Find the very middle of your shoulder seam and pin down the sides of the bow center to the outside of your dress.

See Photos on left.

Do not sew yet!

6. Fold under the other raw edge of the bow center 1/4".

Then fold the edge of the bow center under the armhole opening, so that it is now inside the bodice lining.



Pin the bow center in place on the other side of the bodice.

You want to be sure that the sides match up, so be sure to place carefully.

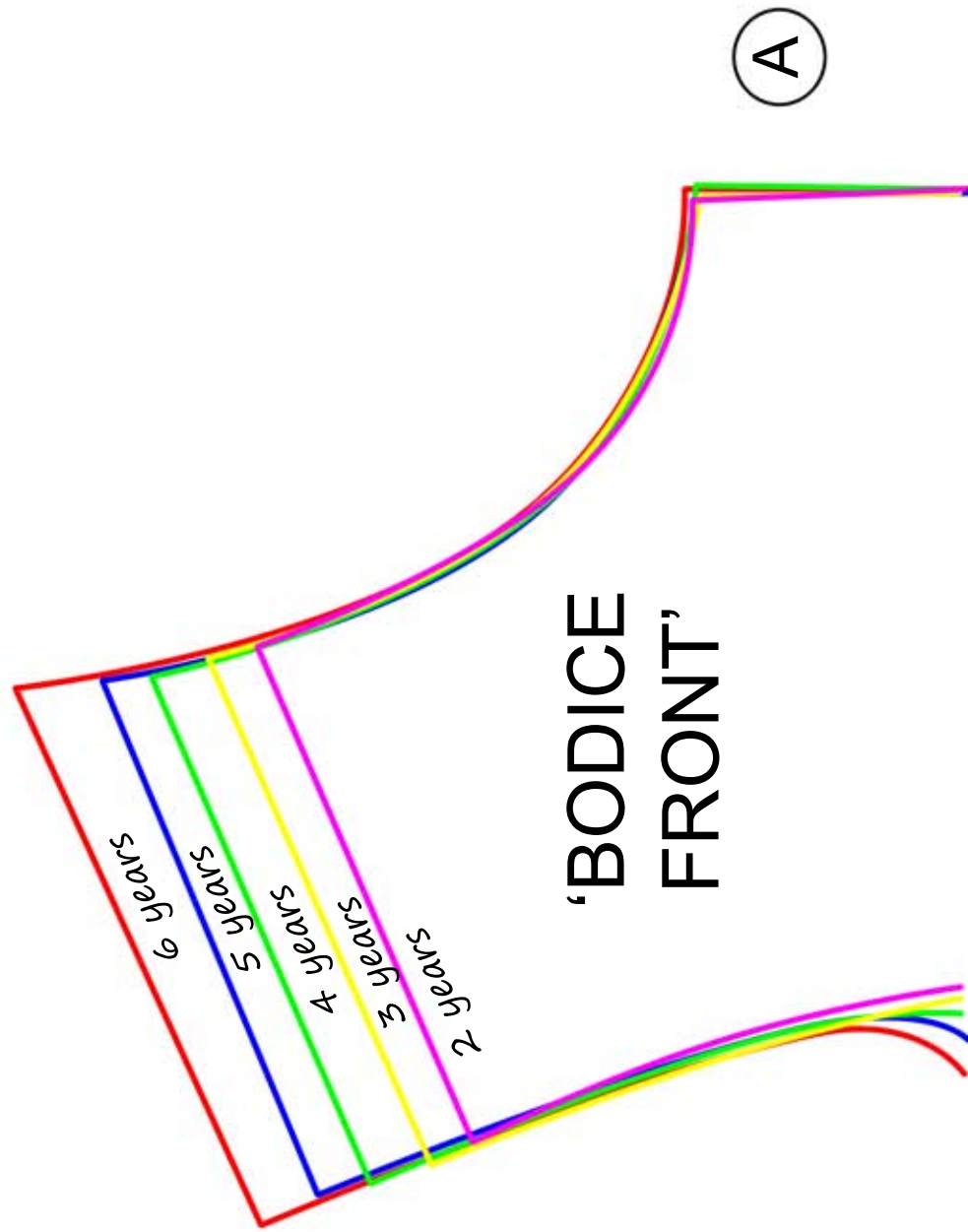
7. Sew bow in place along bow center sides. See below left Photo.

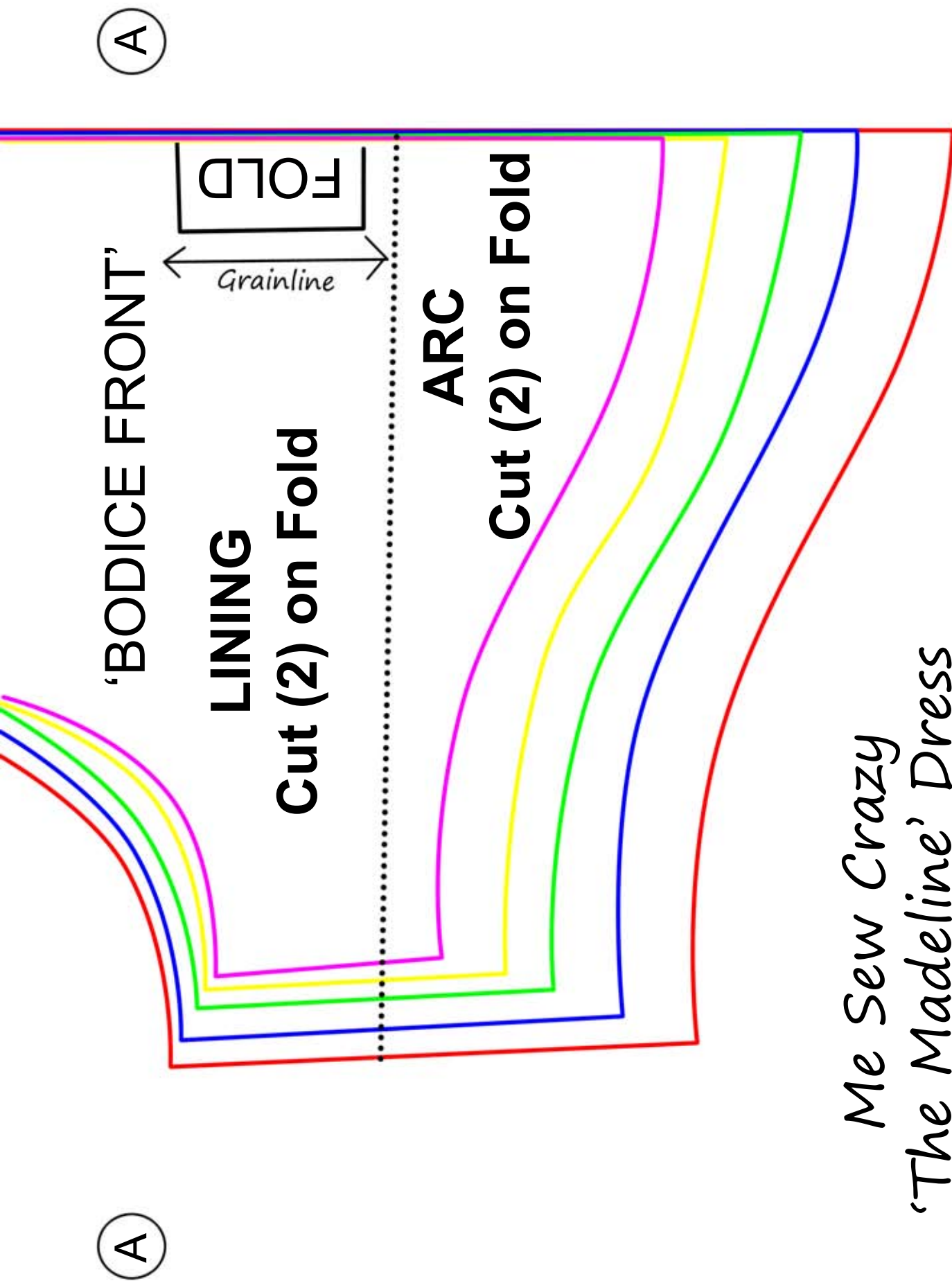
This will secure all raw edges in place! Repeat for other bow pieces & you are finished!



Me Sew Crazy 'The Madeline' Dress

1"
Box

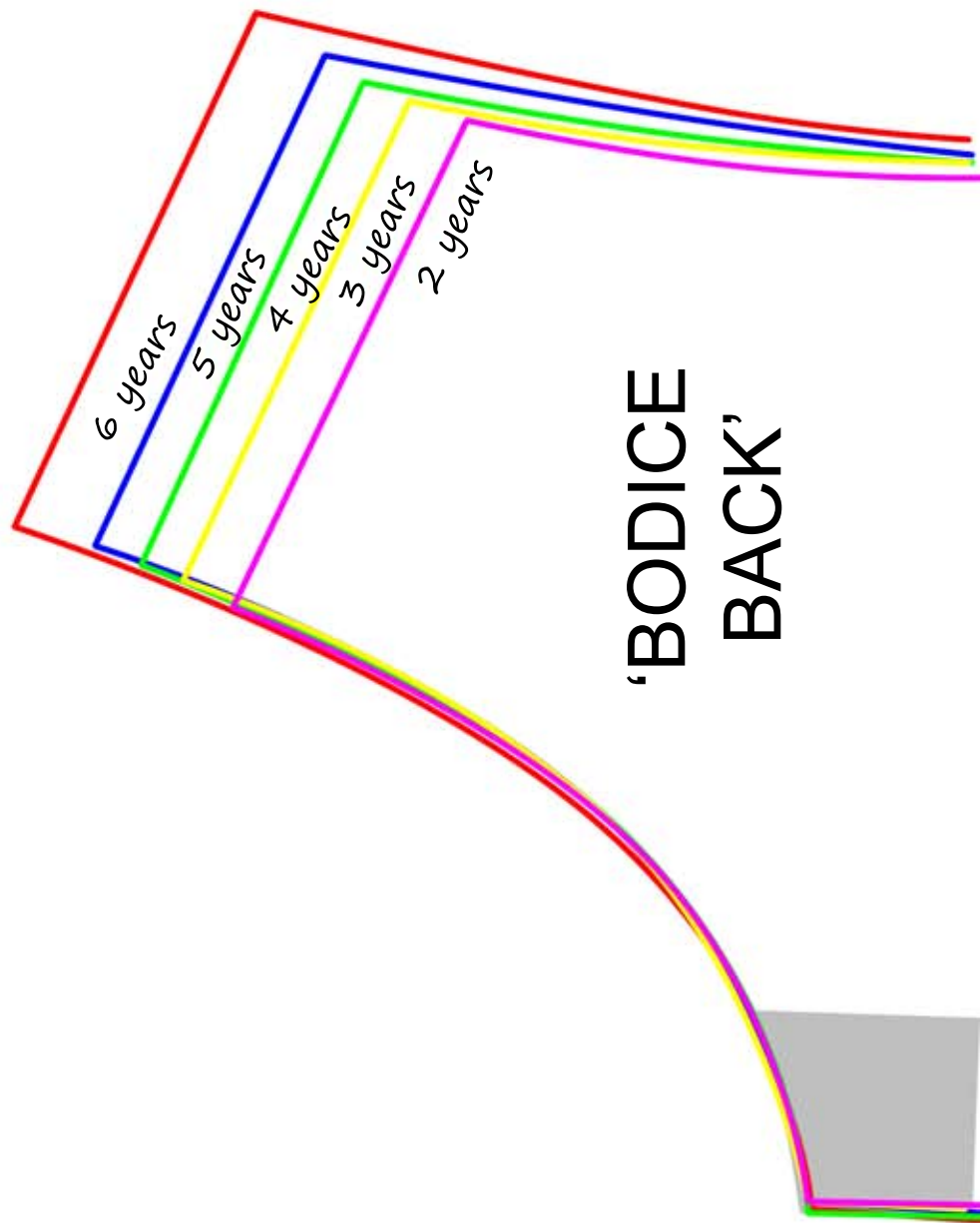




Me Sew Crazy *'The Madeline' Dress*

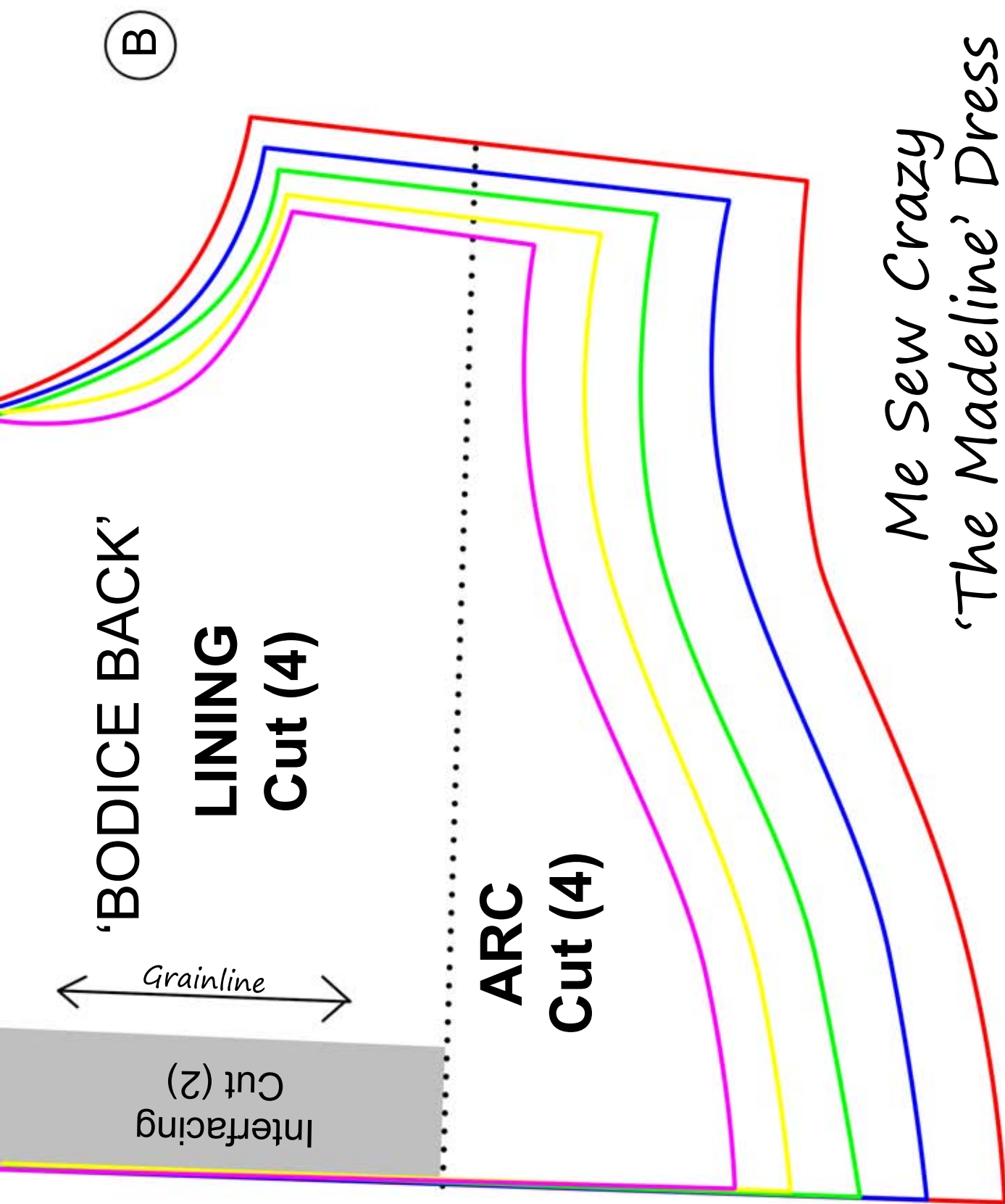
***NOTE -** When cutting the arc bodice front, cut the entire pattern piece. When cutting the lining, stop at dashed line.

Me Sew Crazy 'The Madeline' Dress



B

B



*Me Sew Crazy
'The Madeline' Dress*

***NOTE -** When cutting the arc bodice back, cut the entire pattern piece. When cutting the lining, stop at dashed line.