

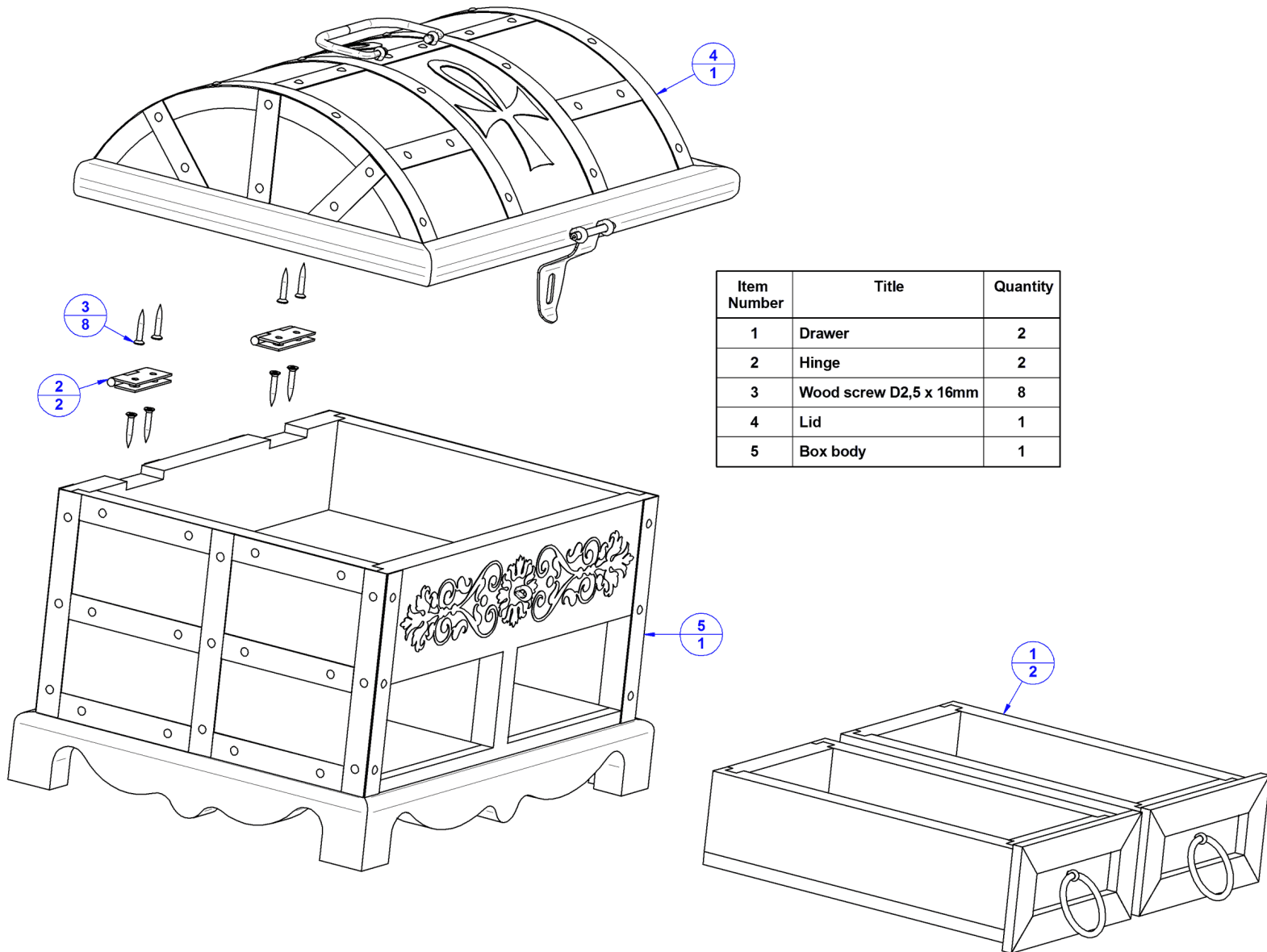
Antique style jewelry box plan



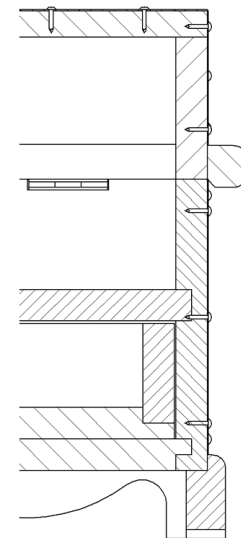
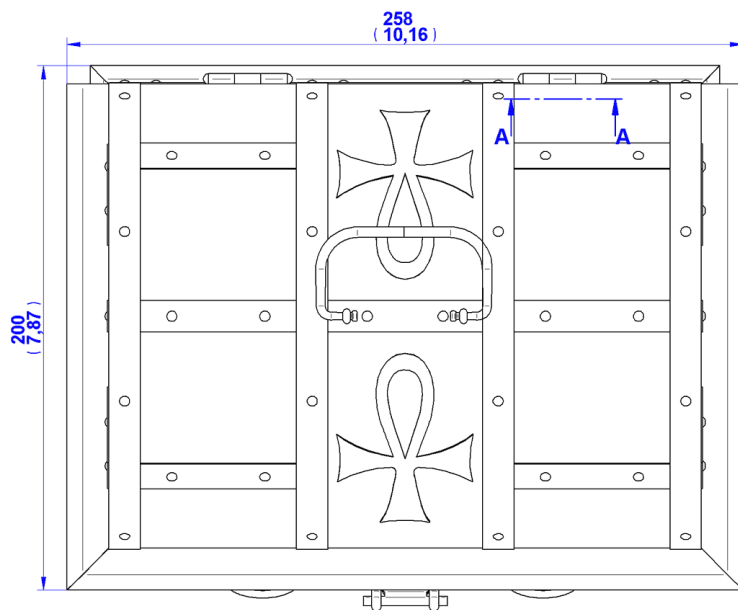
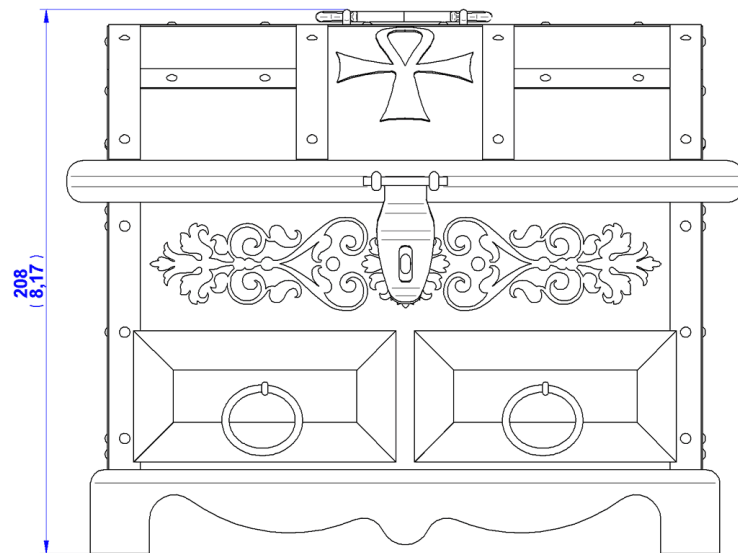
Through centuries women had a special relation to jewelry. Whether it was family heirloom, expensive jewelry collection, or just a few symbolic decorative gifts, they tend to treasure and keep them safe and for that purpose the jewelry box was invented. Of course there are numerous kinds of jewelry boxes these days on the market, but in the past, these boxes were handmade for a long period of time and with a special meaning, and because of that, the antique jewelry boxes have that unique spirit and perfect style.

Our antique style jewelry box plan offers you a beautiful traditional jewelry box of wooden construction with an authentic decoration on the top chest and a lock. It has two larger drawers where you can hold all your jewelry collection and other precious things. So, if you make this jewelry box, it will be one of the favorite things in your home, and it will last a life time if taken care of properly.

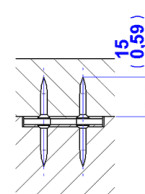
Antique style jewelry box – Subassembly list



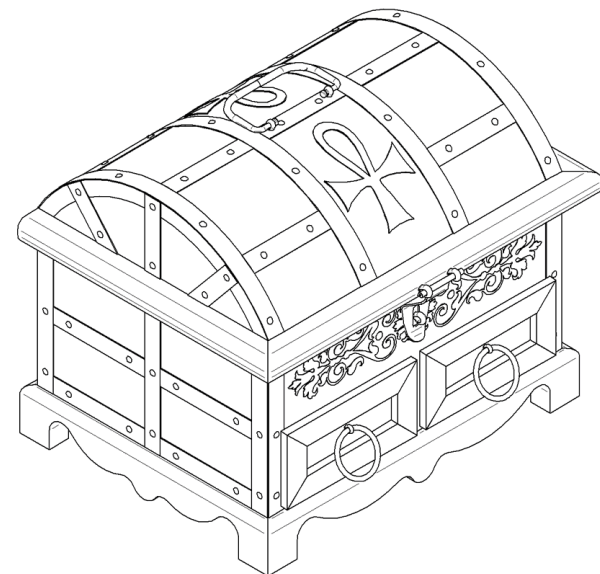
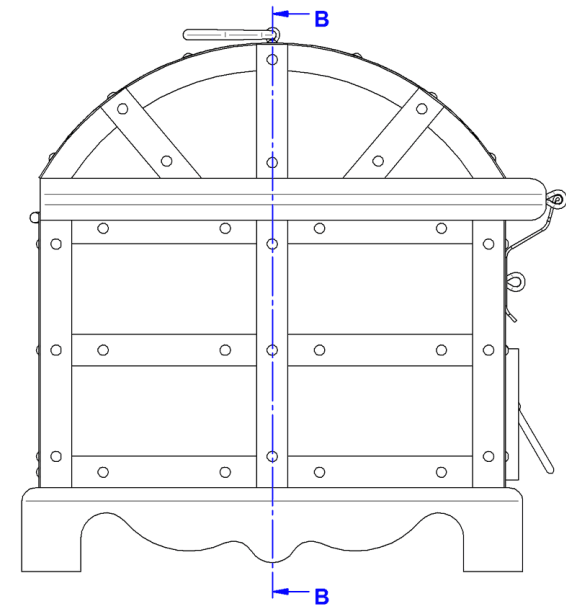
Antique style jewelry box – Assembly 2D drawing



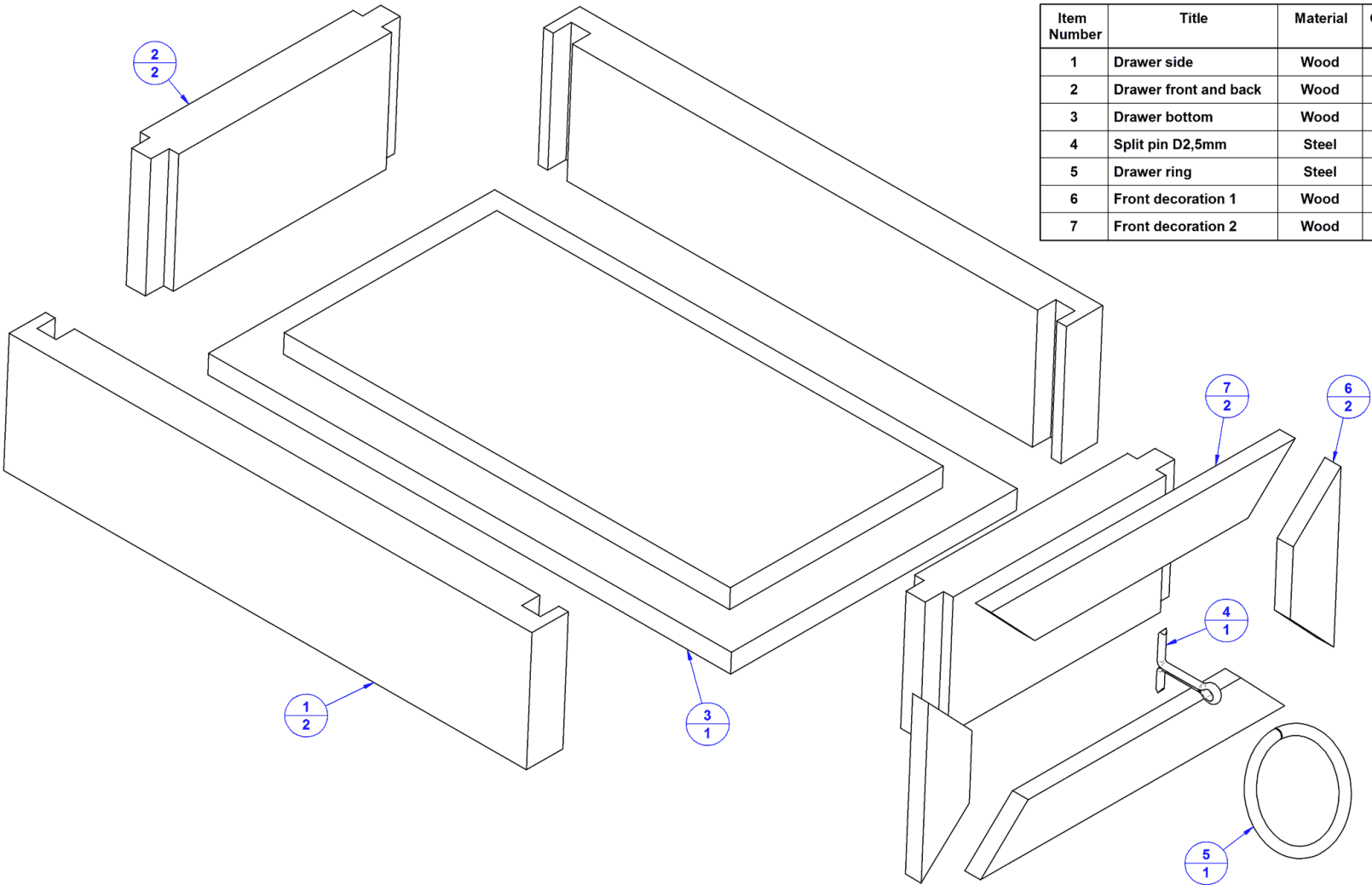
SECTION B-B



SECTION A-A

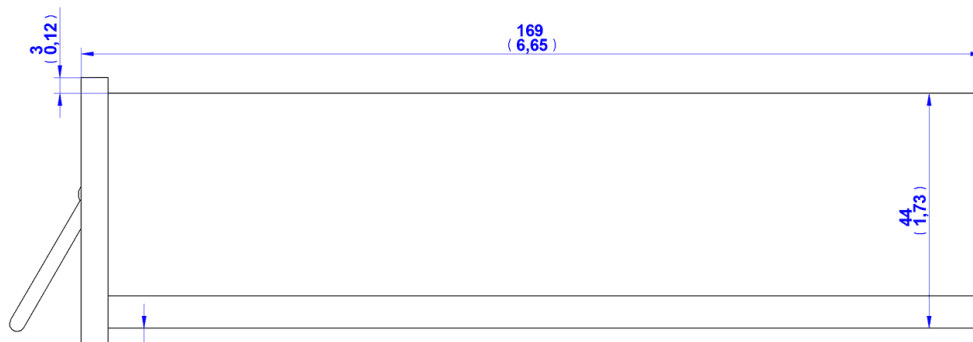


1. Drawer subassembly - parts list

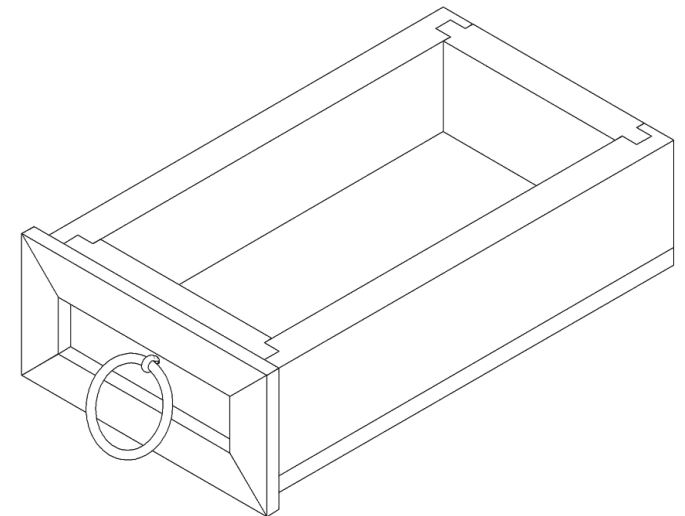
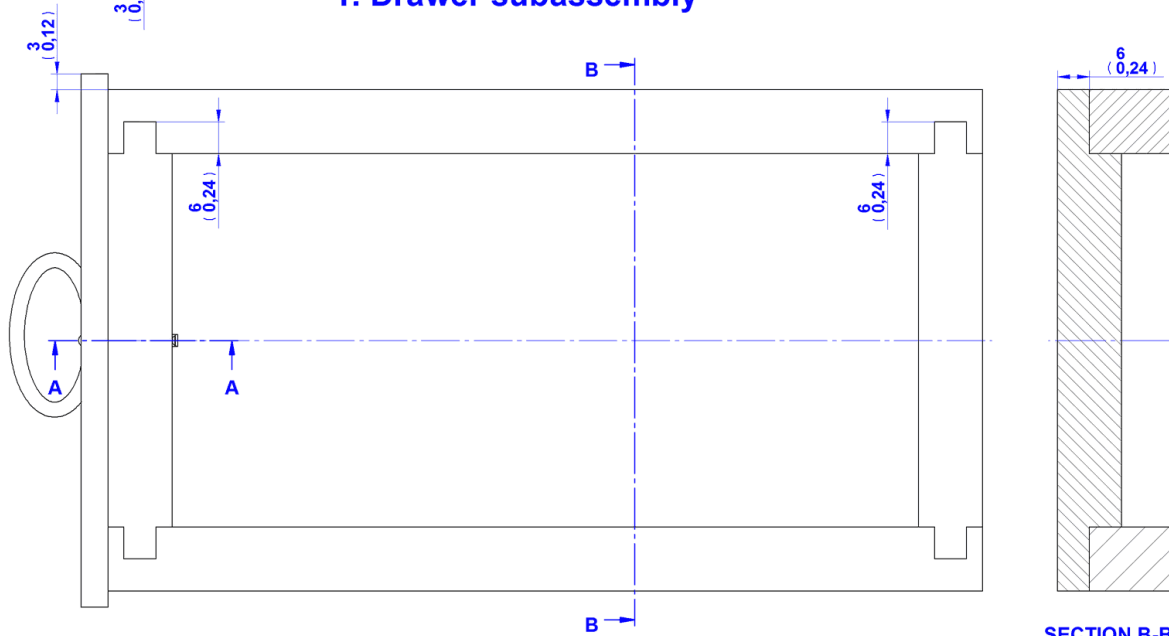
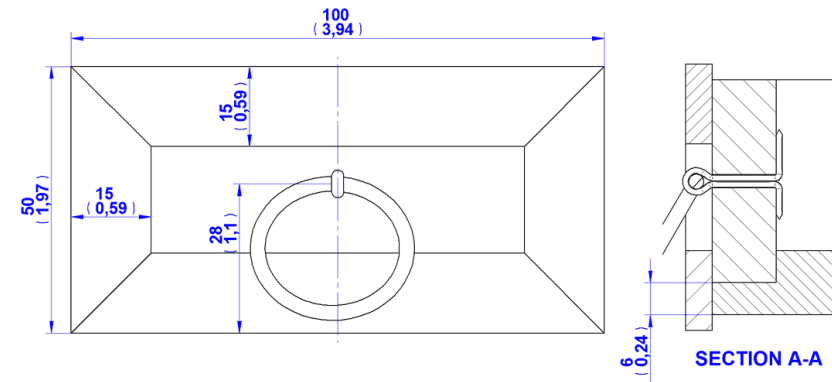


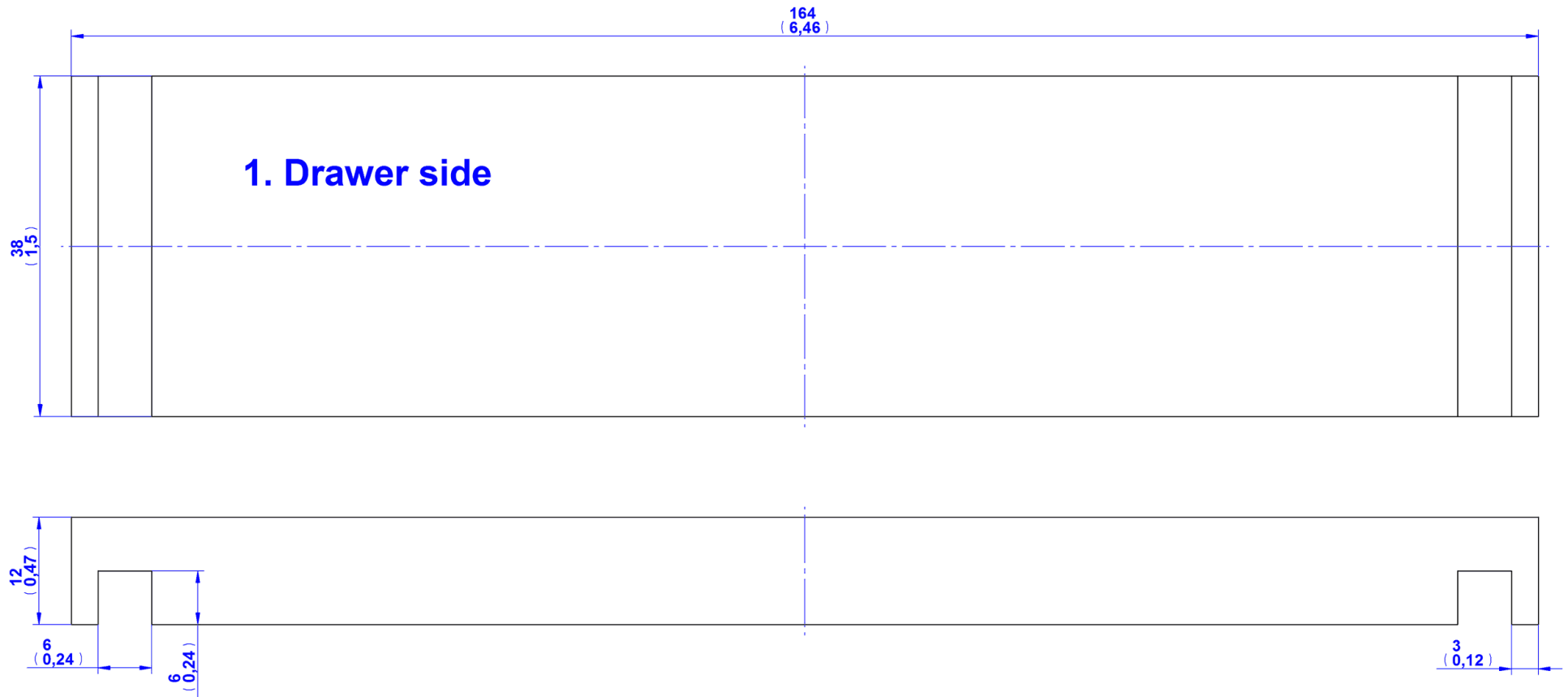
Item Number	Title	Material	Quantity
1	Drawer side	Wood	2
2	Drawer front and back	Wood	2
3	Drawer bottom	Wood	1
4	Split pin D2,5mm	Steel	1
5	Drawer ring	Steel	1
6	Front decoration 1	Wood	2
7	Front decoration 2	Wood	2

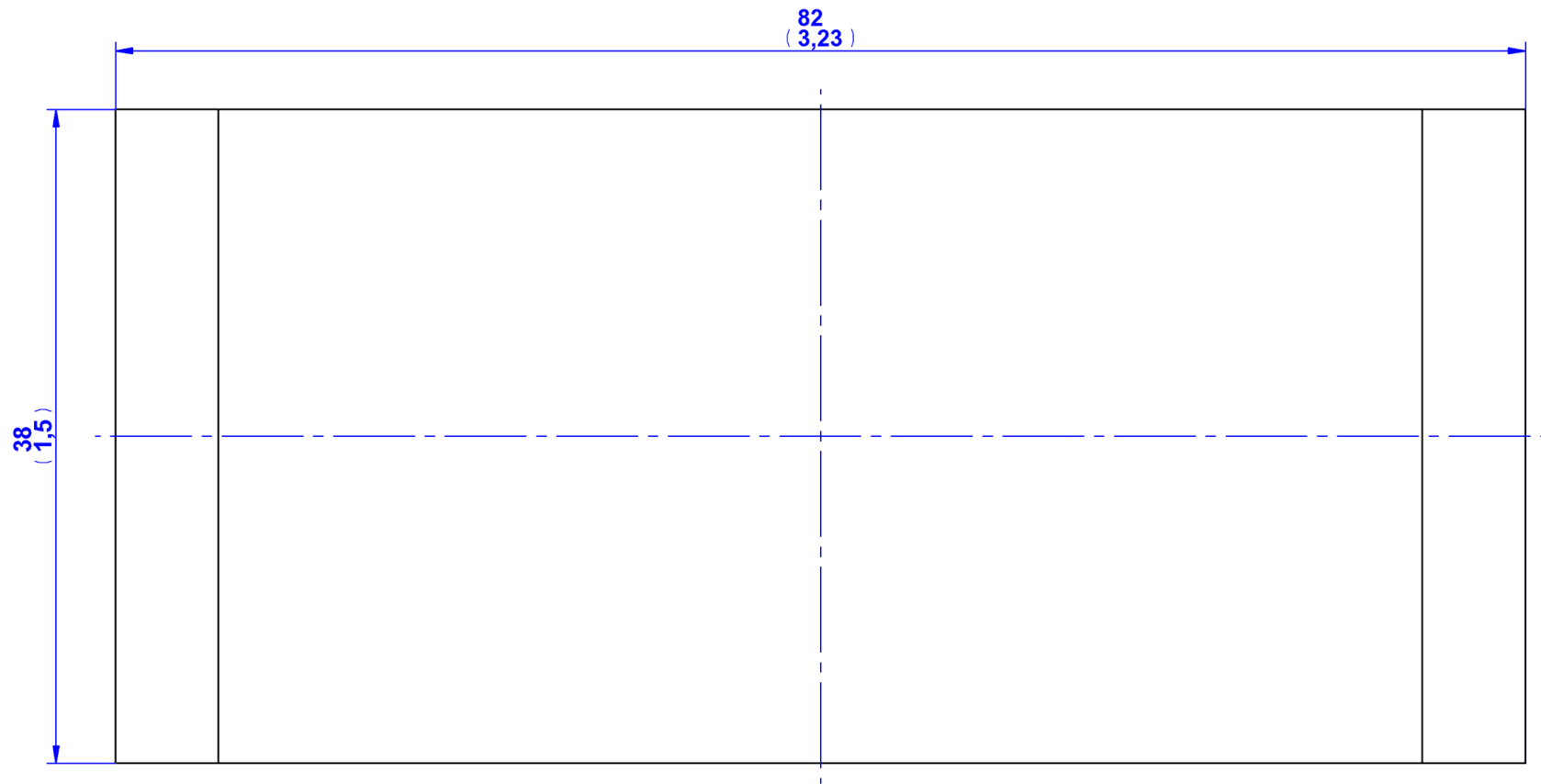
Drawer subassembly drawing



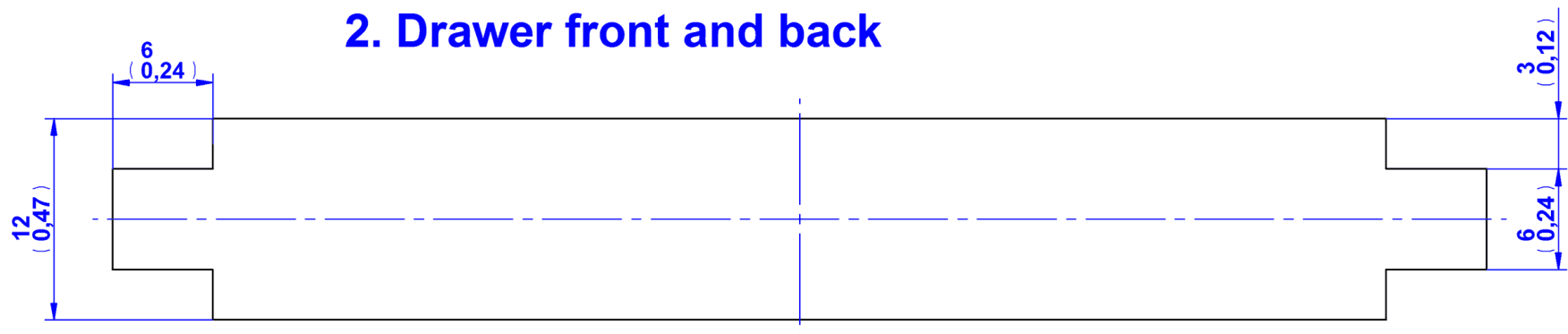
1. Drawer subassembly

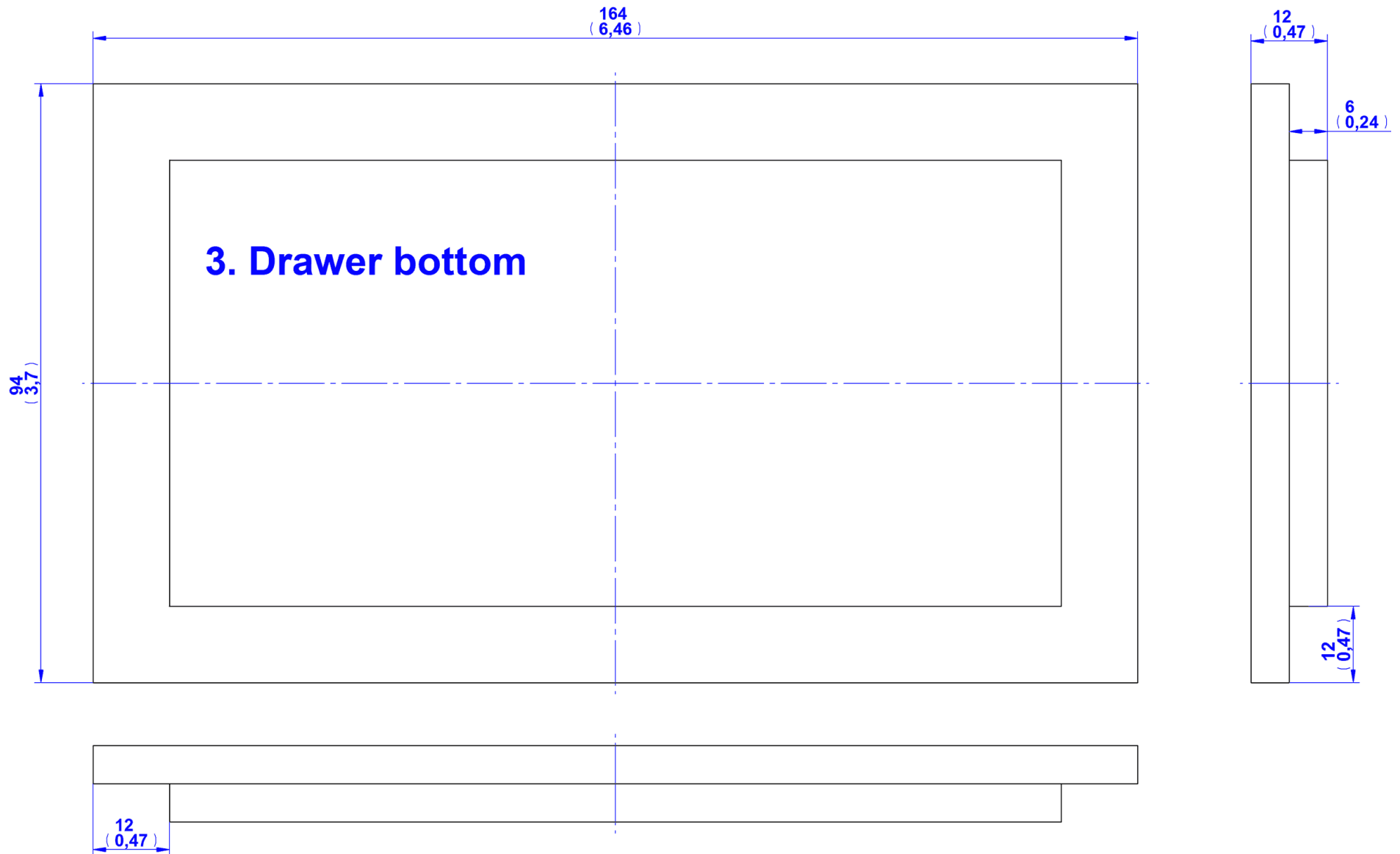


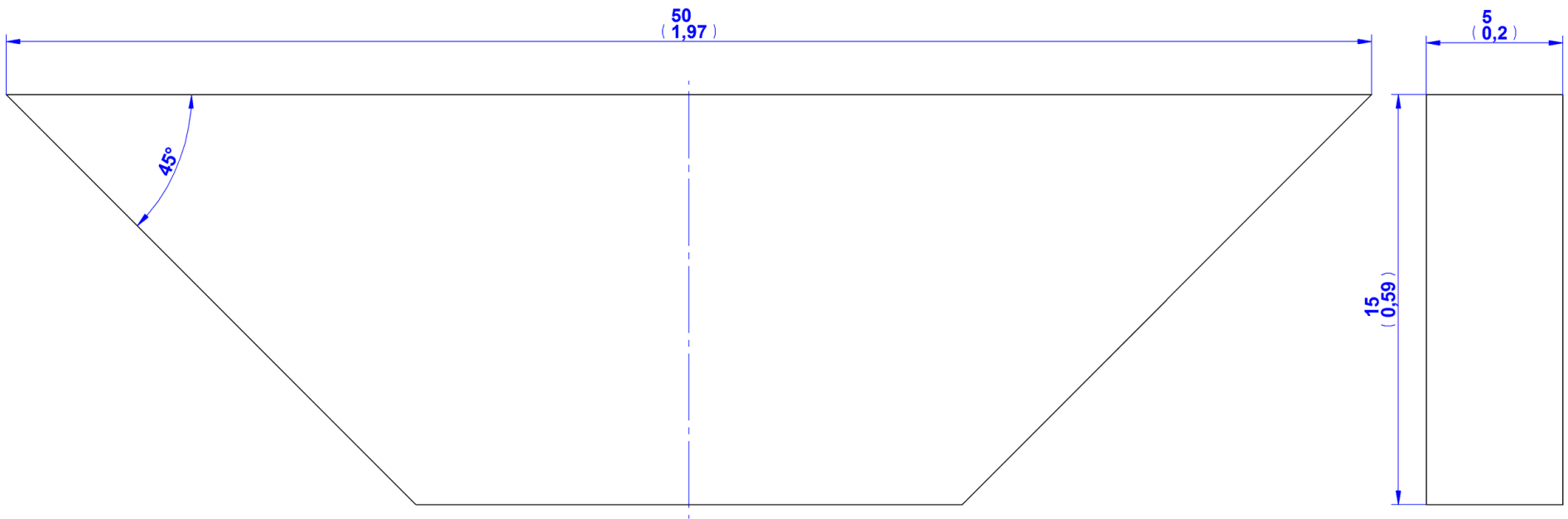




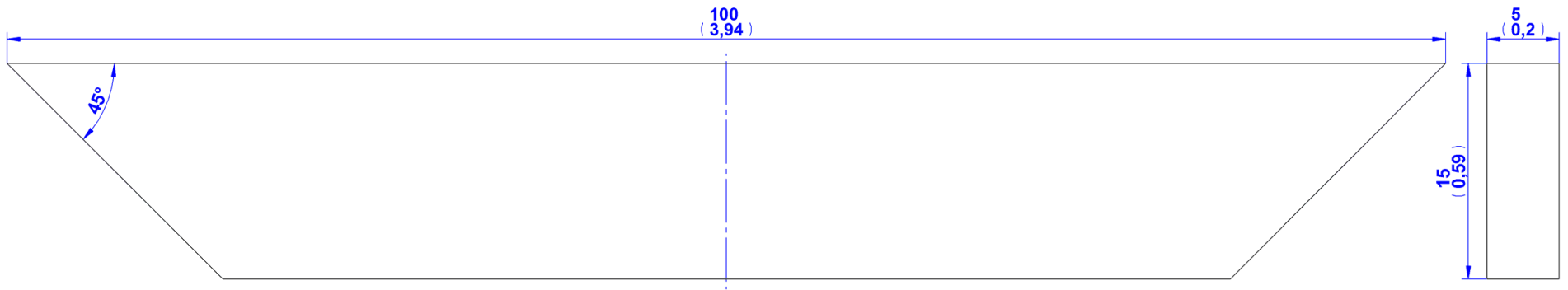
2. Drawer front and back



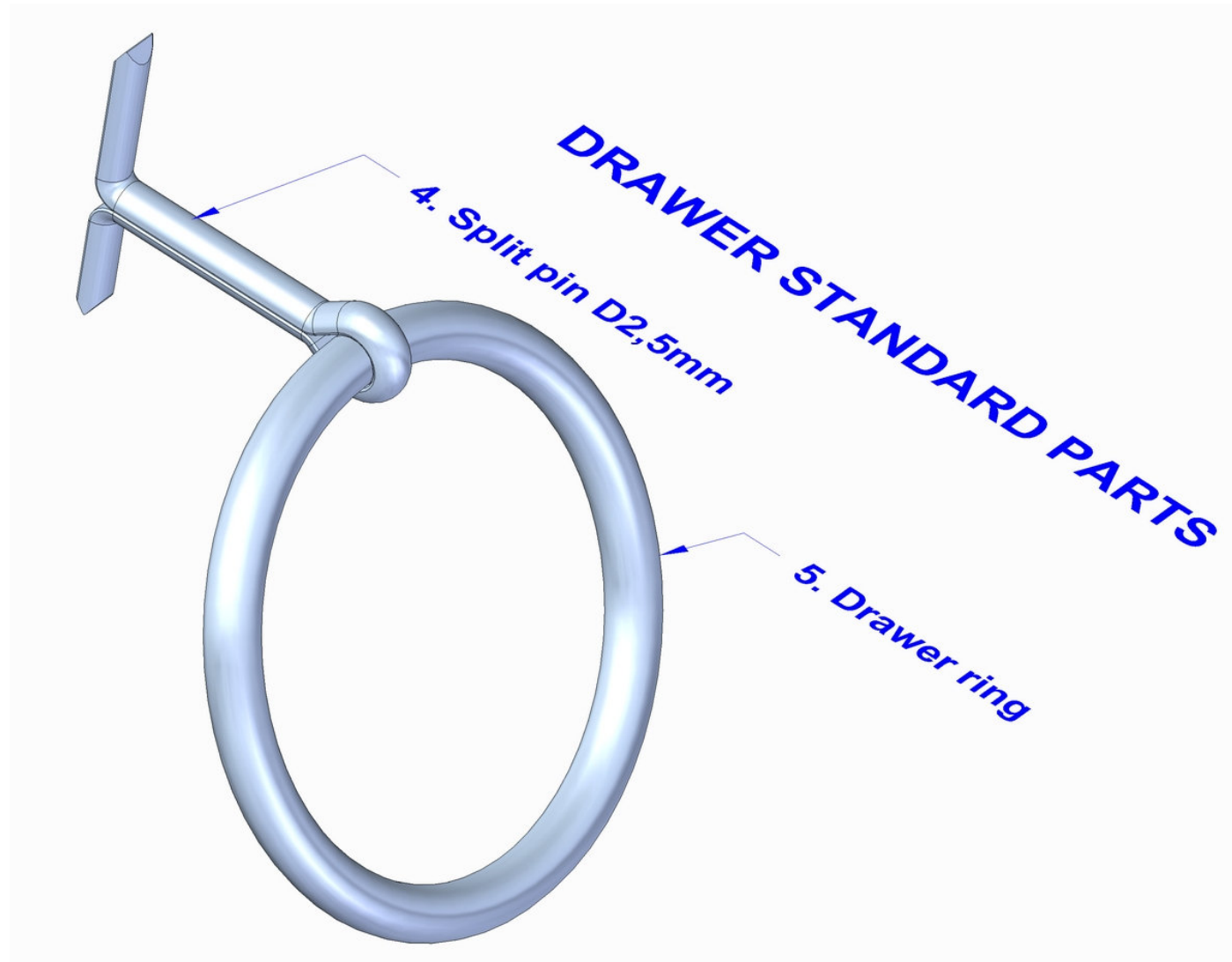




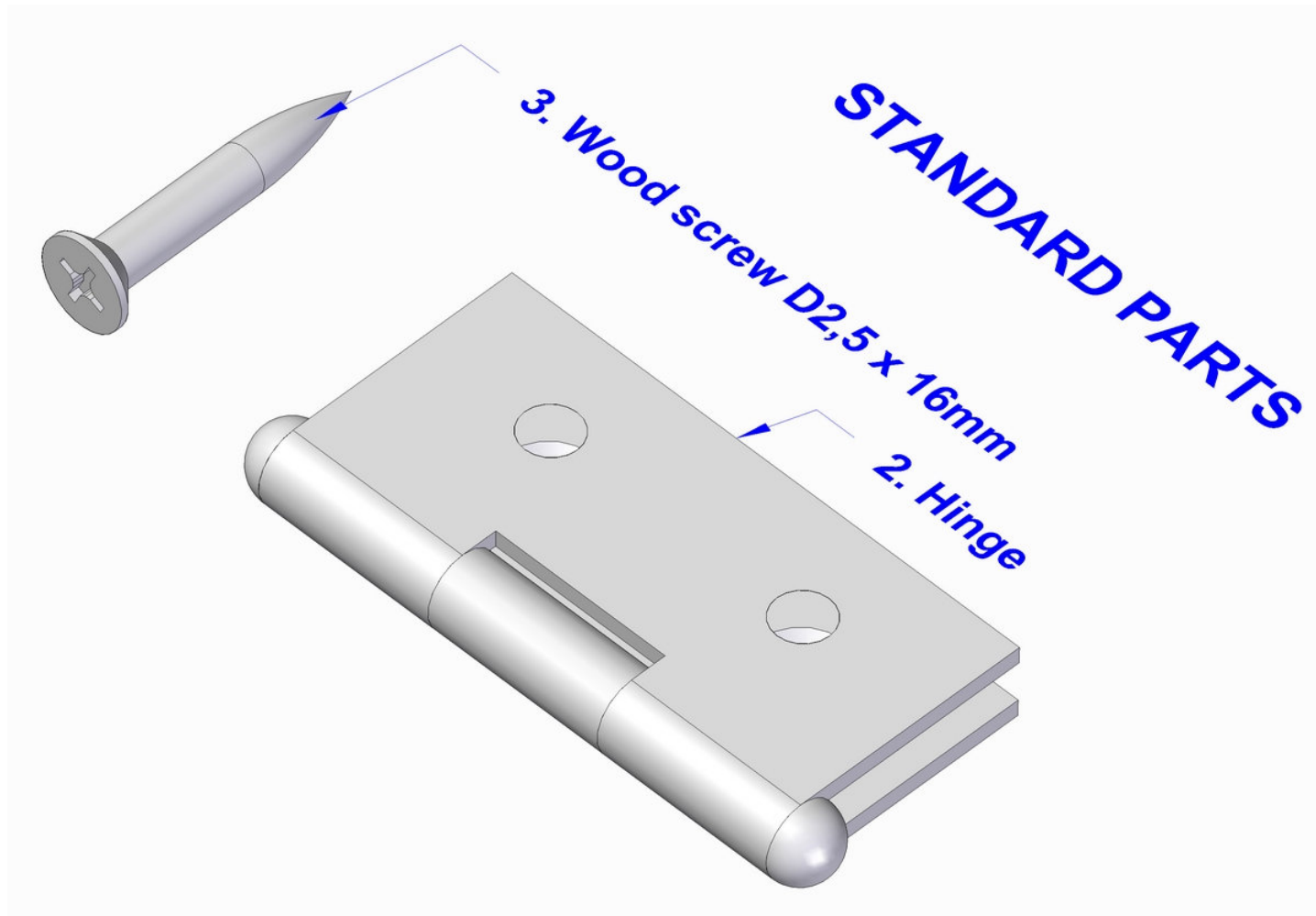
6. Front decoration 1



7. Front decoration 2

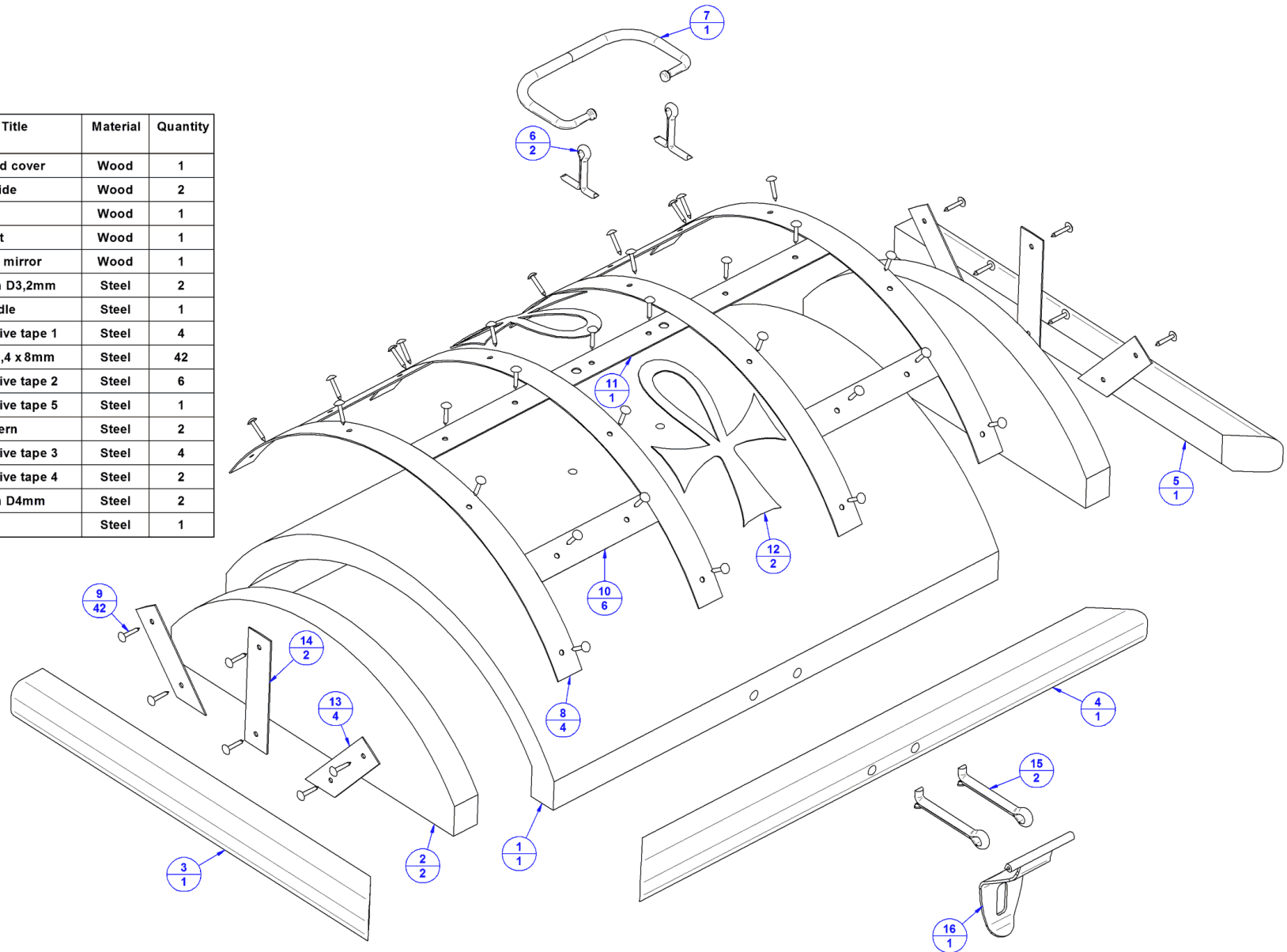


2 and 3. Antique style jewelry box– Standard parts

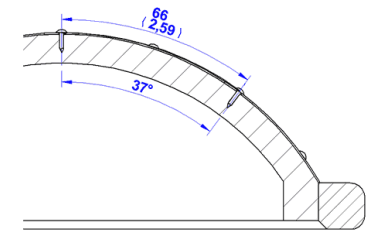
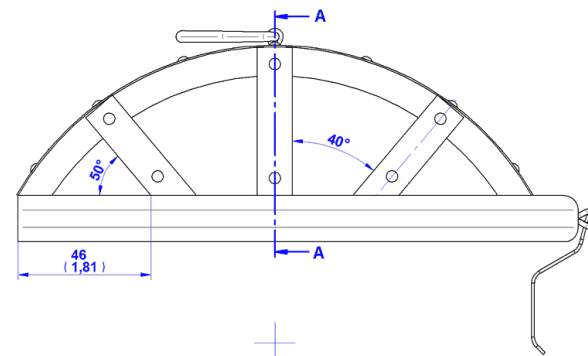
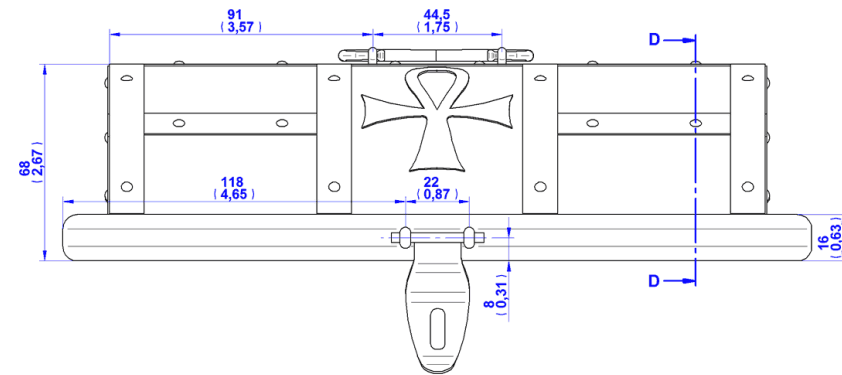


4. Lid subassembly – Parts list

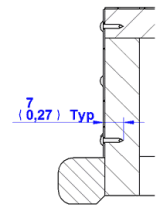
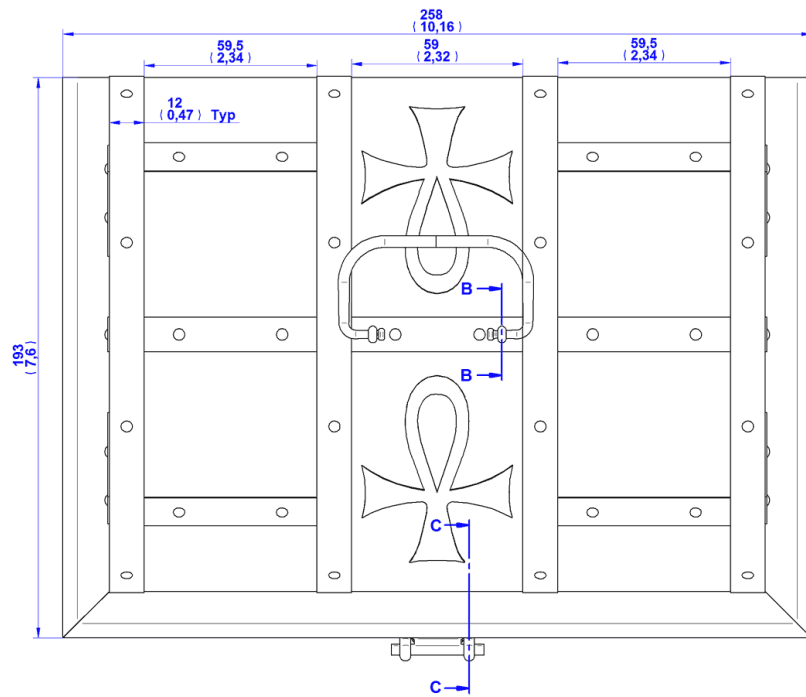
Item Number	Title	Material	Quantity
1	Rounded cover	Wood	1
2	Cover side	Wood	2
3	Lid side	Wood	1
4	Lid front	Wood	1
5	Lid side mirror	Wood	1
6	Split pin D3,2mm	Steel	2
7	Lid handle	Steel	1
8	Decorative tape 1	Steel	4
9	Tack D1,4 x 8mm	Steel	42
10	Decorative tape 2	Steel	6
11	Decorative tape 5	Steel	1
12	Lid pattern	Steel	2
13	Decorative tape 3	Steel	4
14	Decorative tape 4	Steel	2
15	Split pin D4mm	Steel	2
16	Lid lock	Steel	1



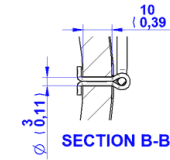
Lid subassembly drawing



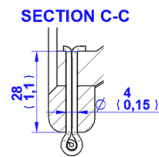
SECTION D-D



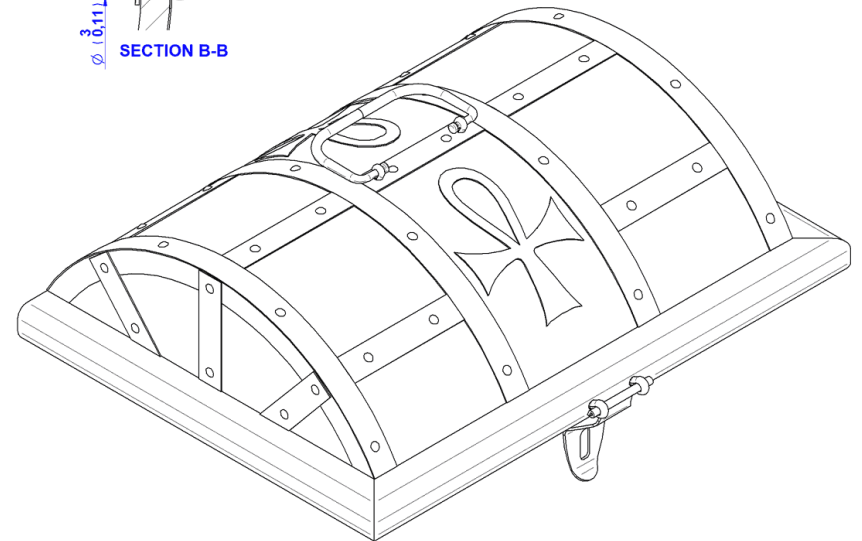
SECTION A-A

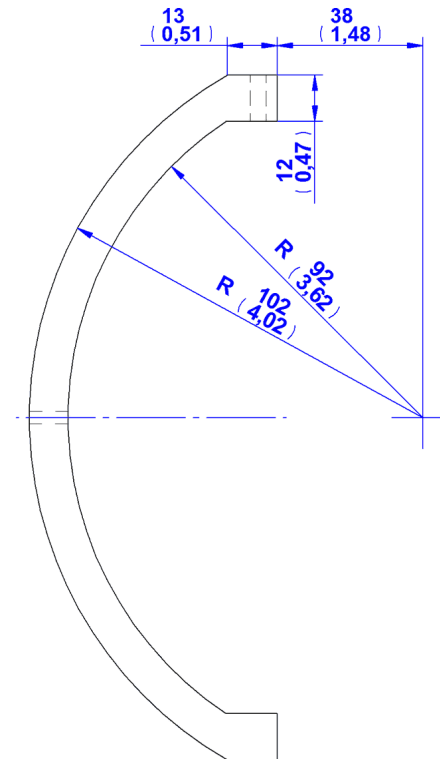
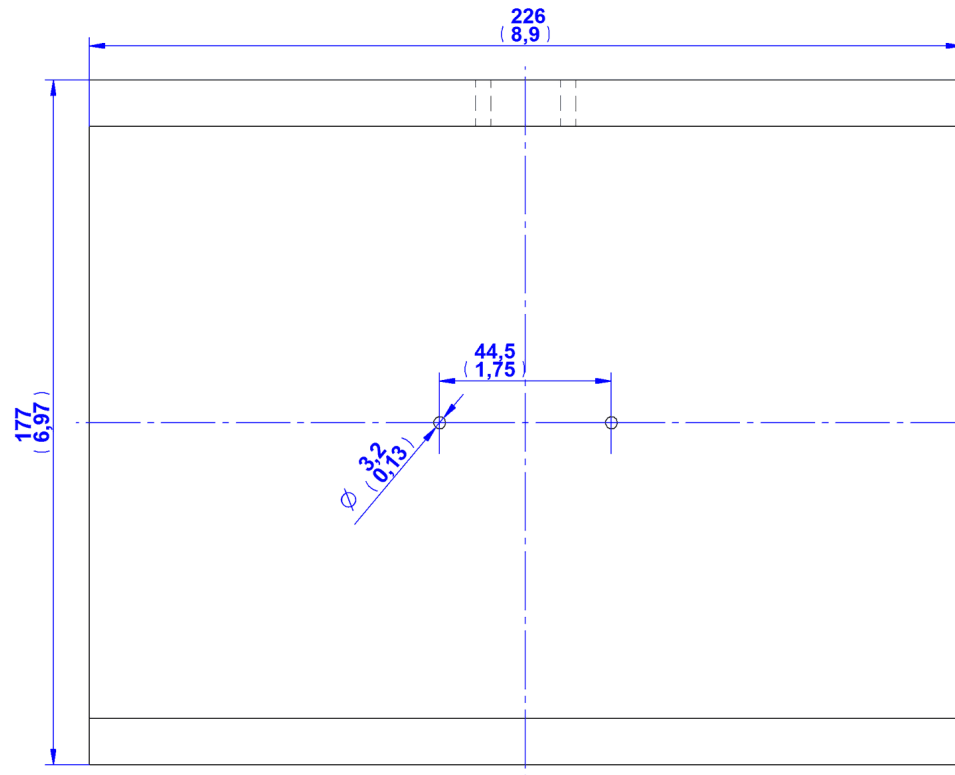


SECTION B-B

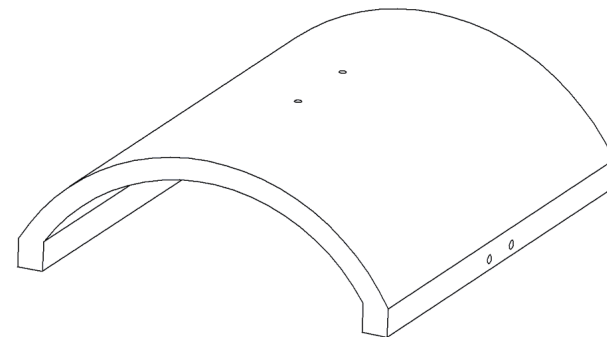
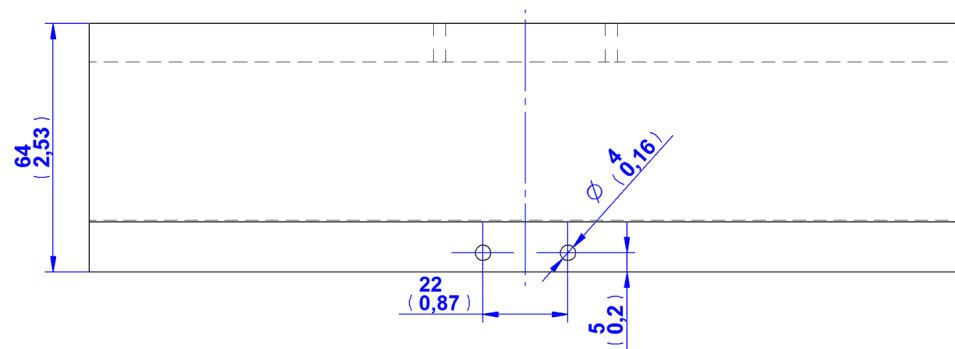


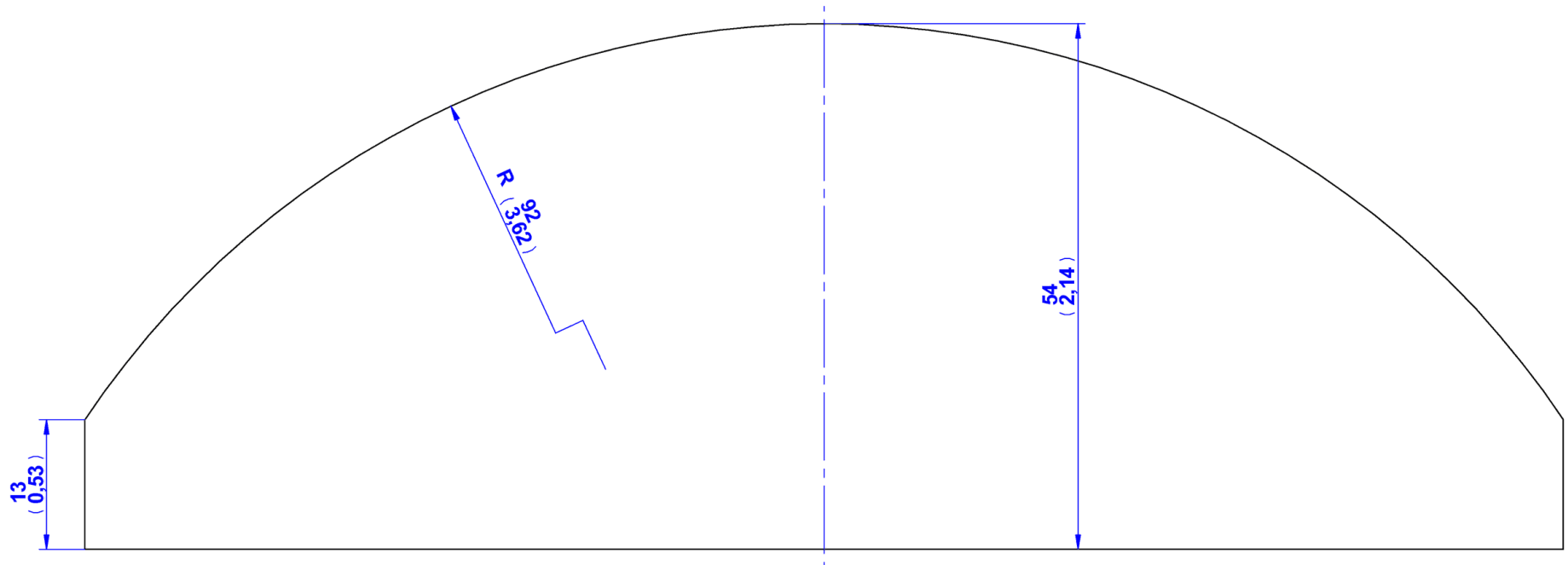
SECTION C-C



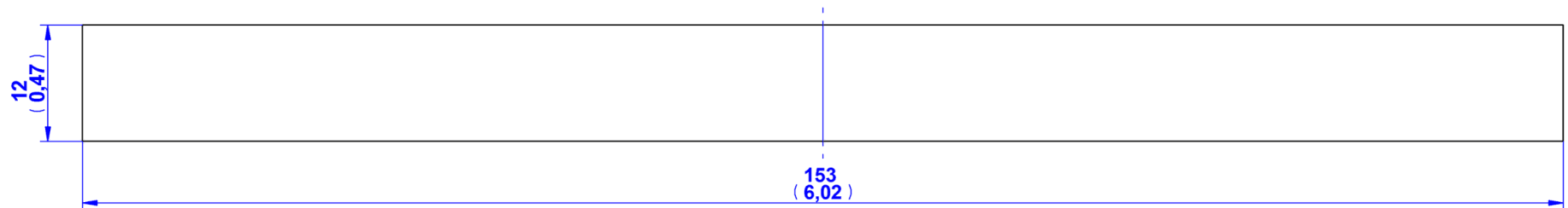


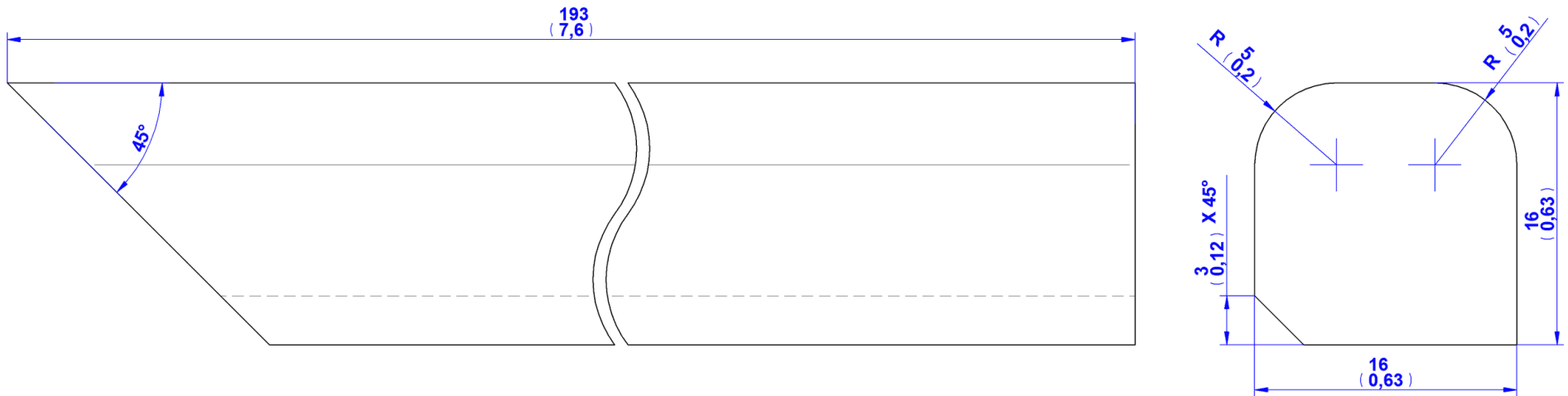
1. Rounded cover



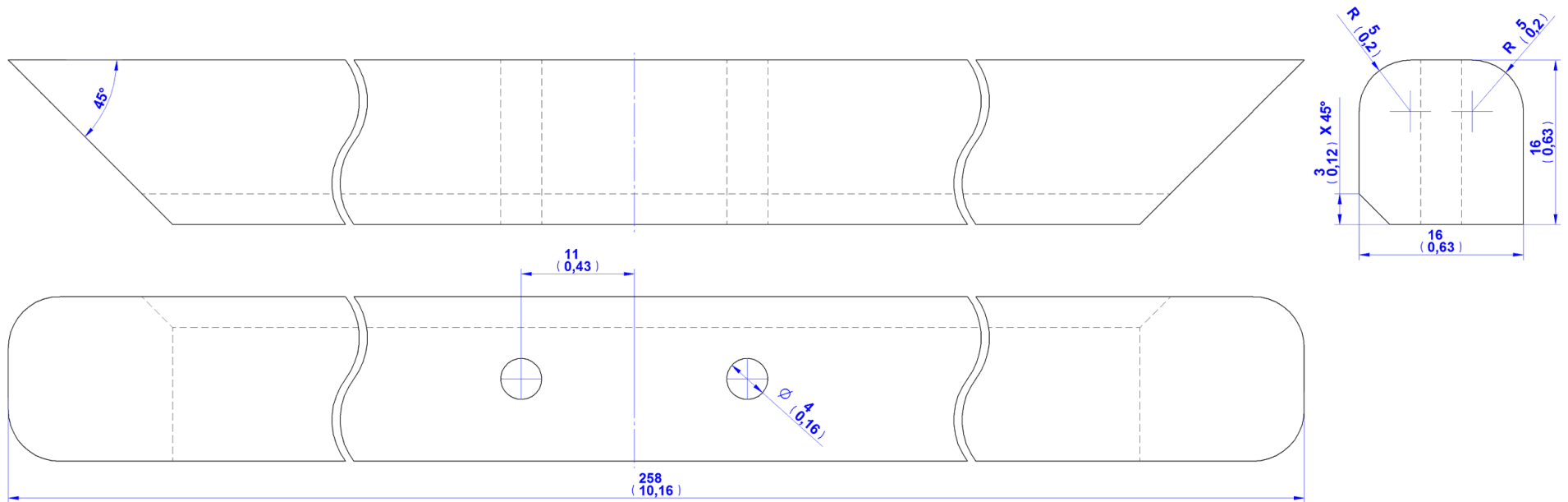


2. Cover side

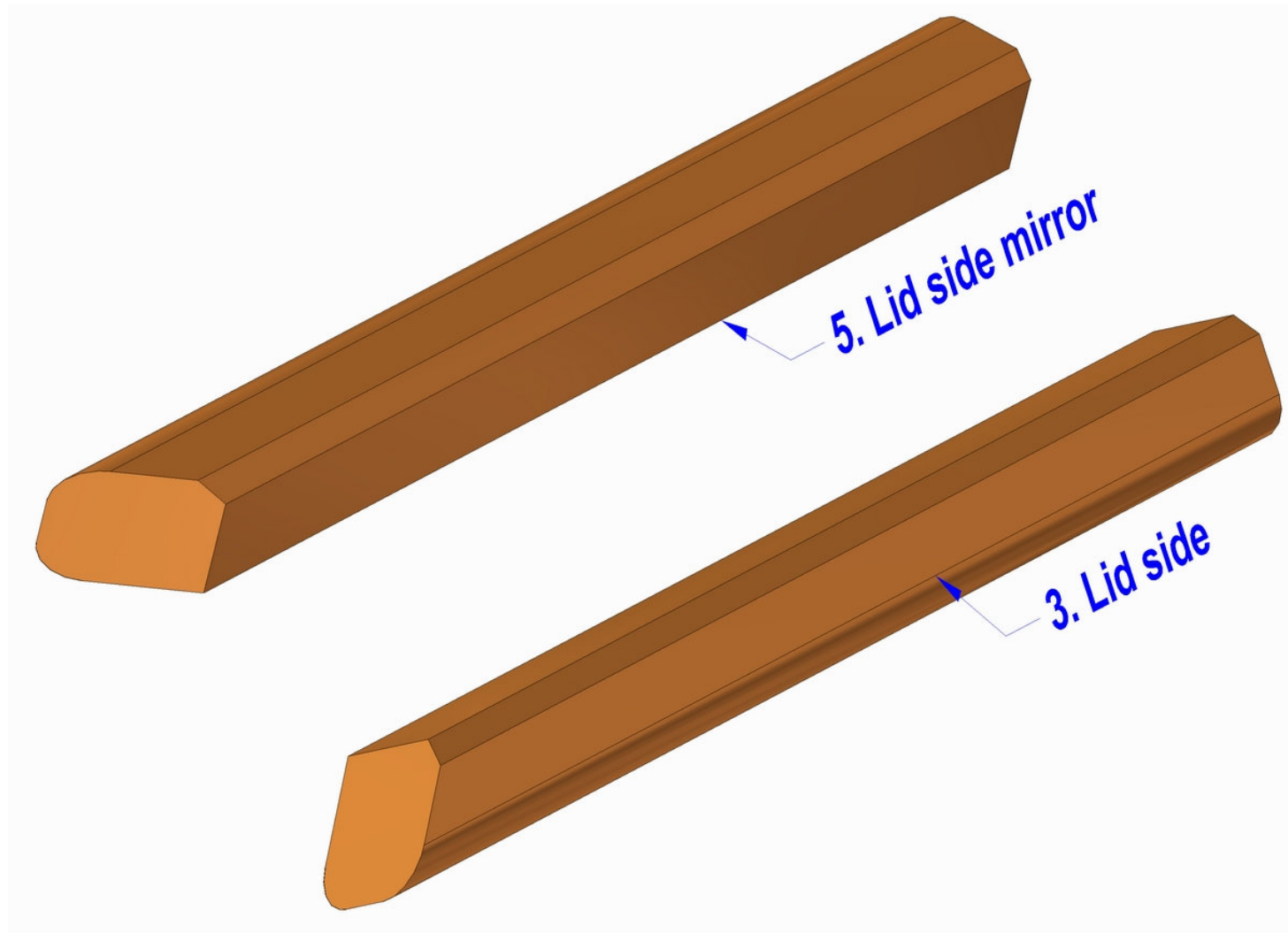


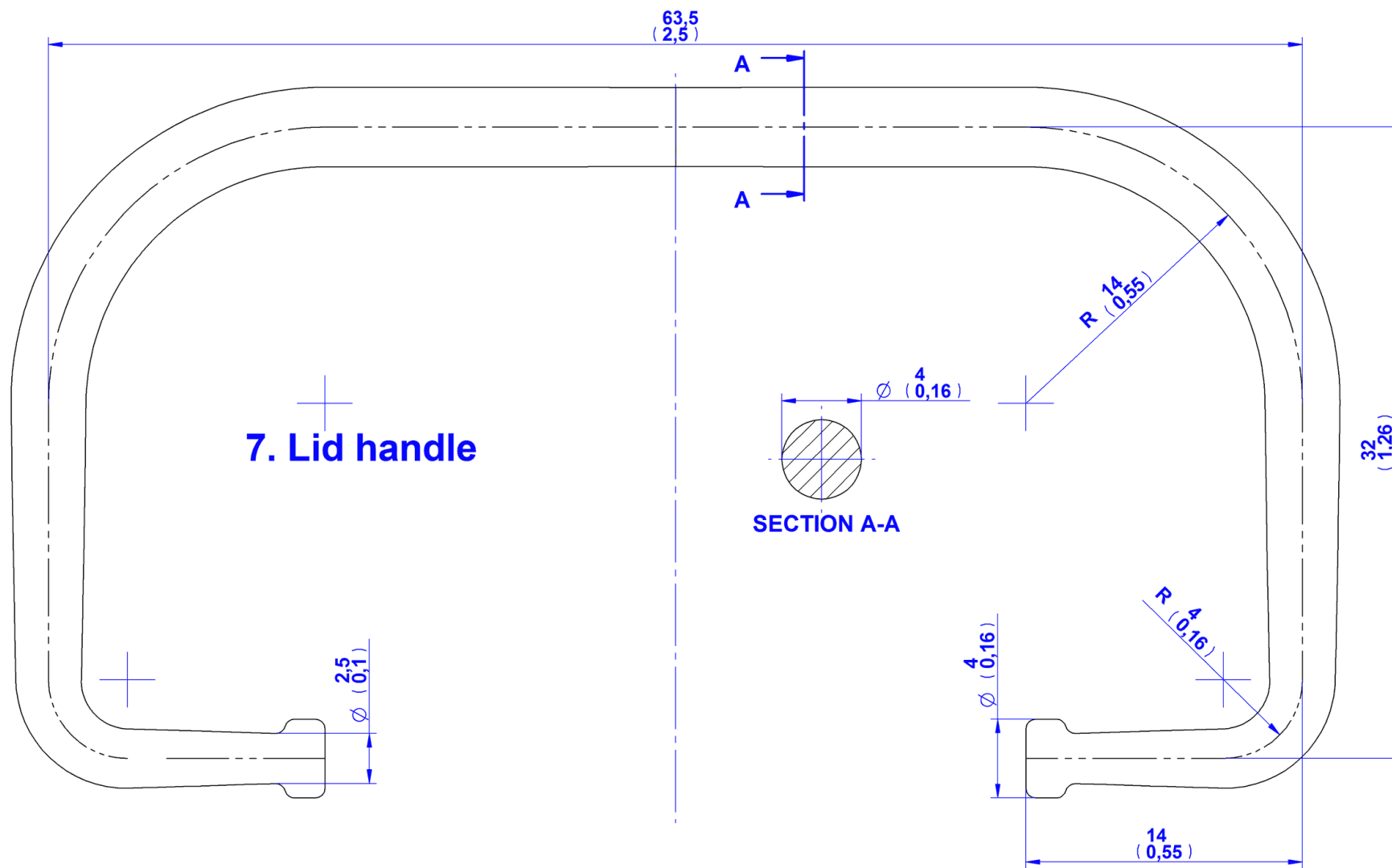


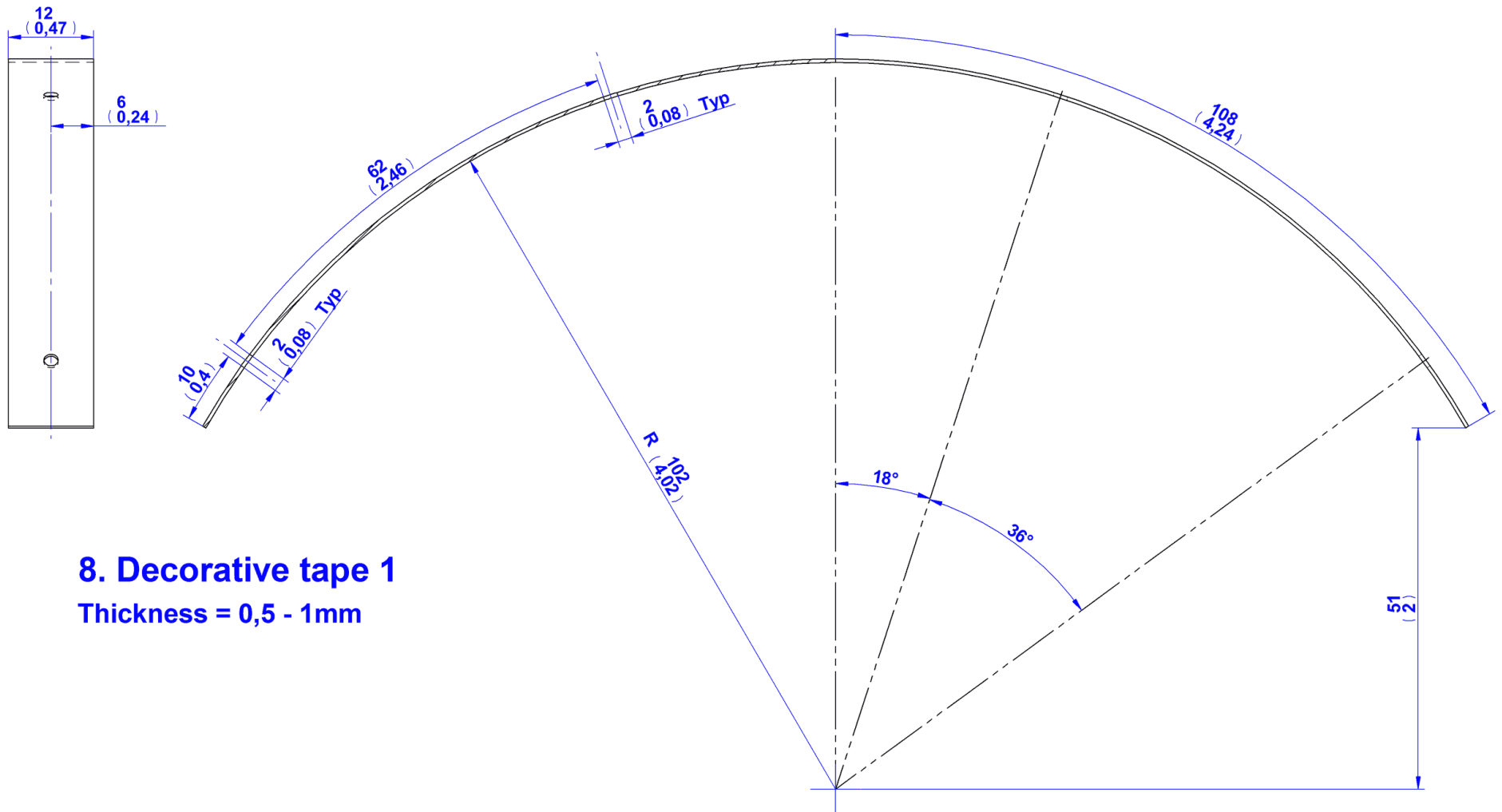
3. Lid side

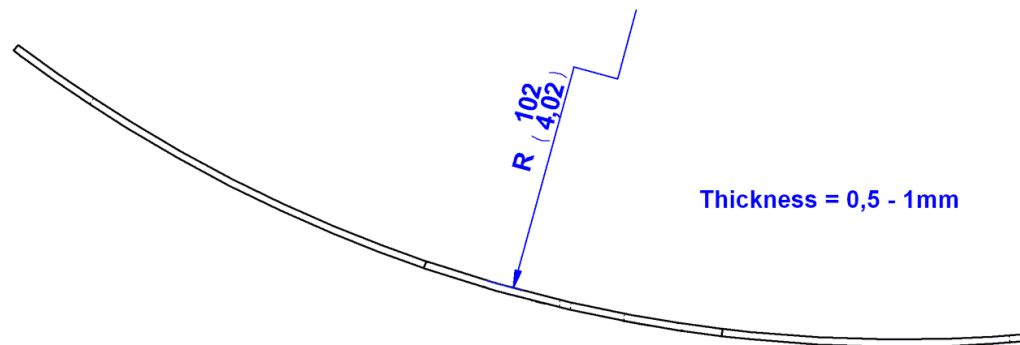
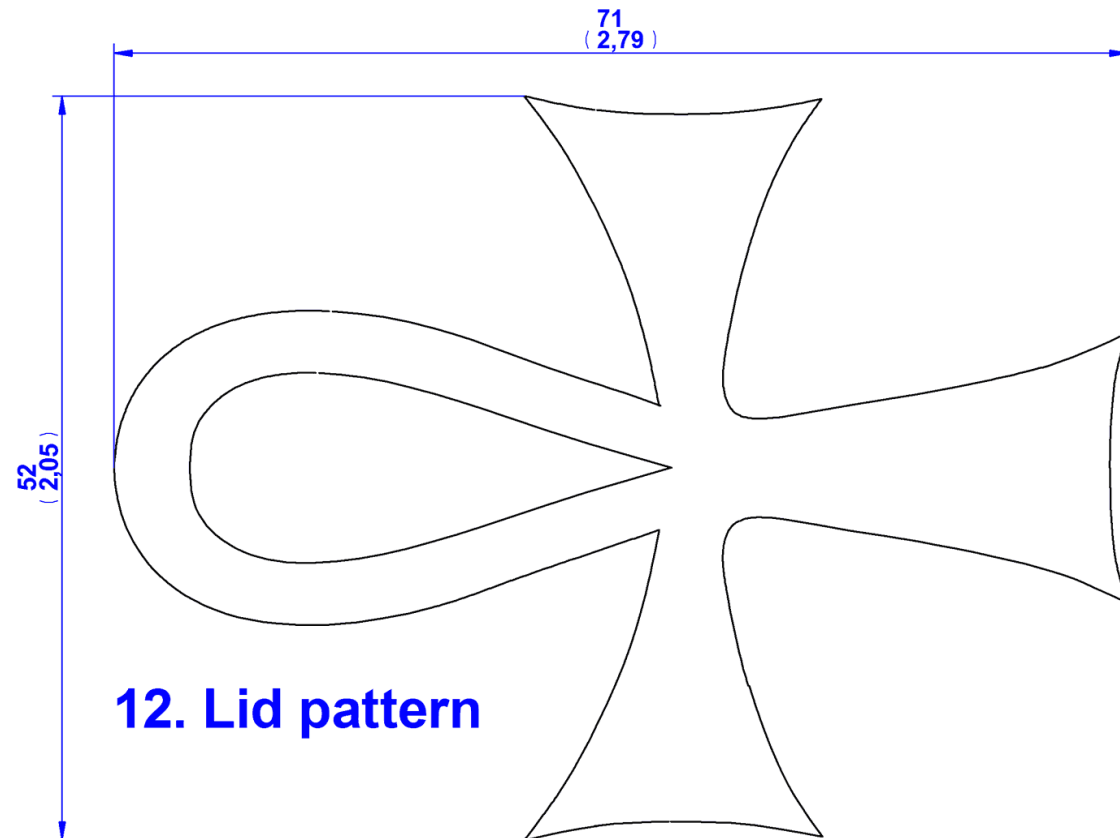


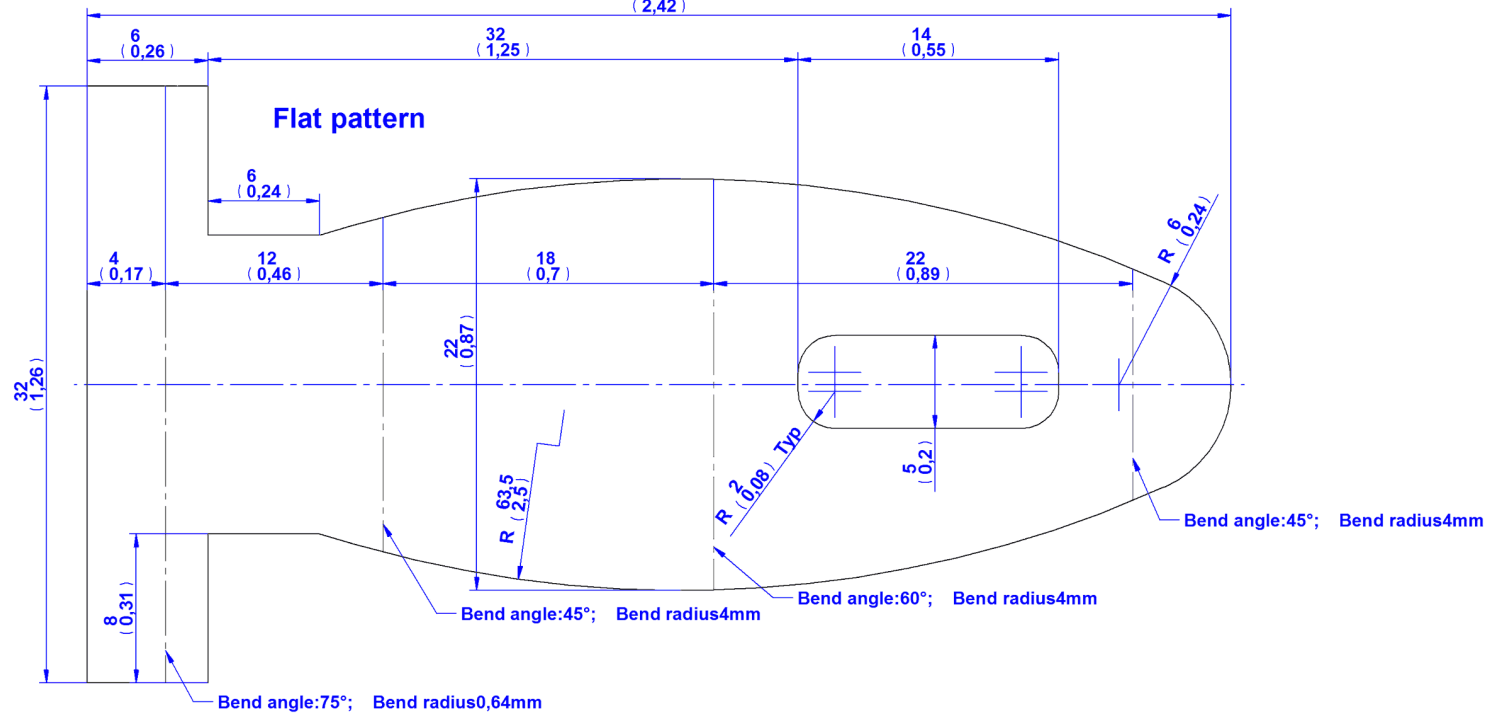
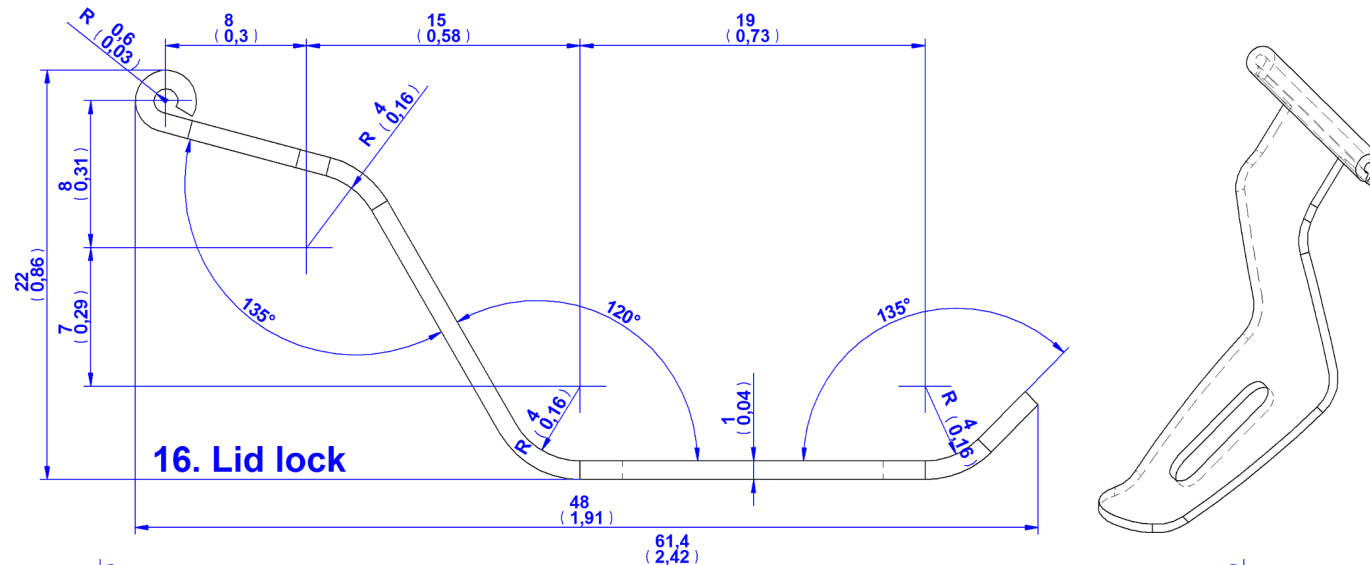
4. Lid front

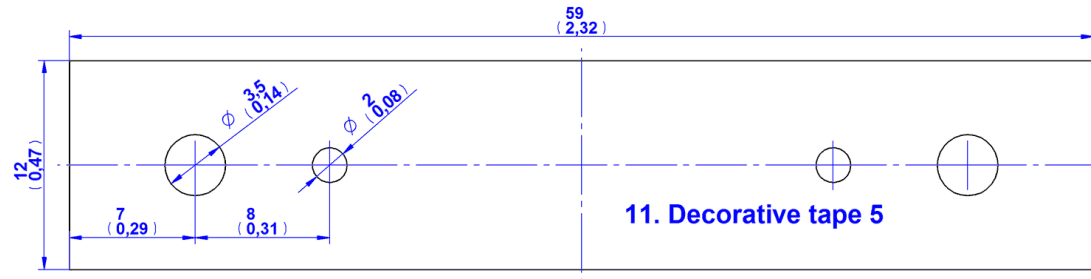
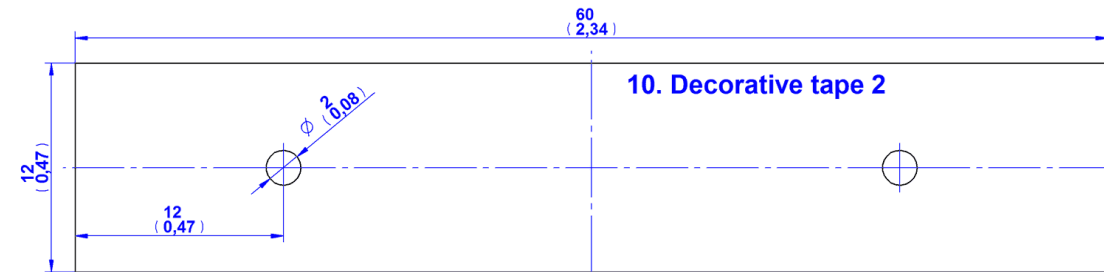




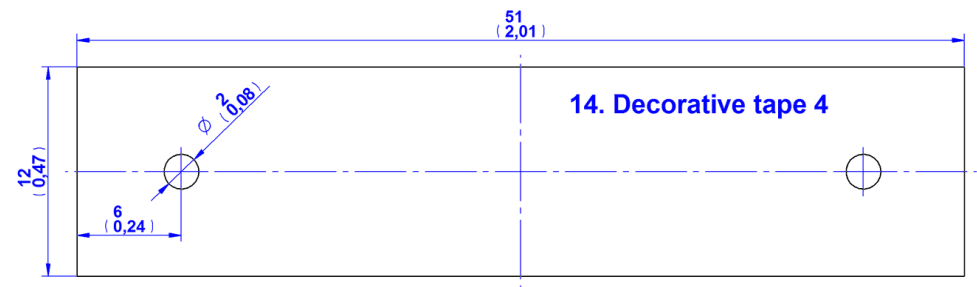
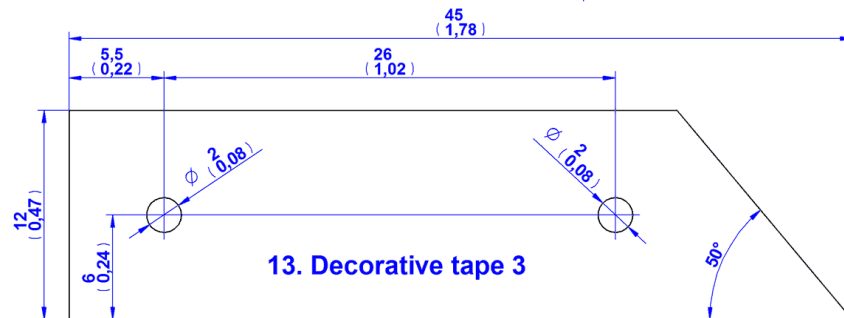


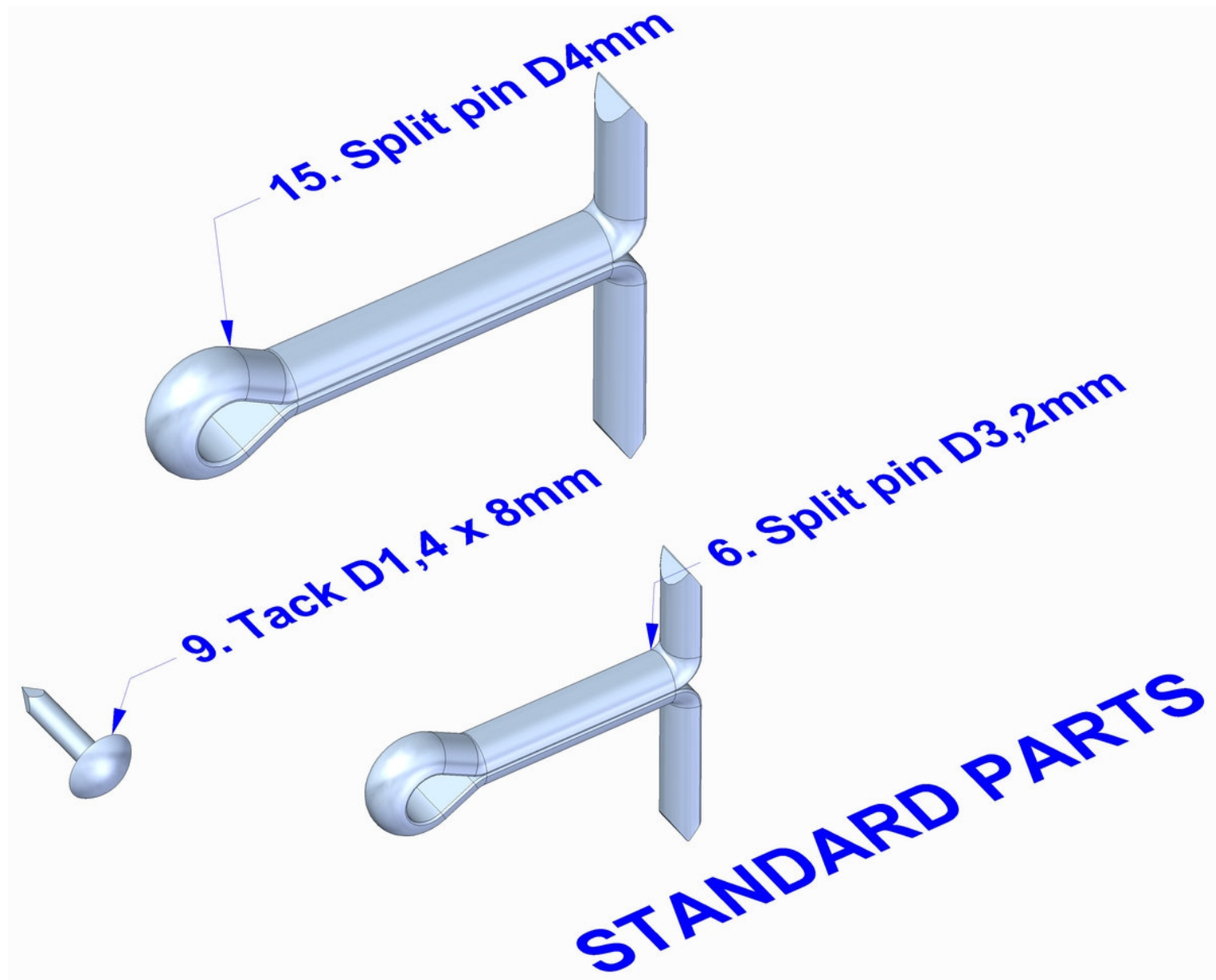




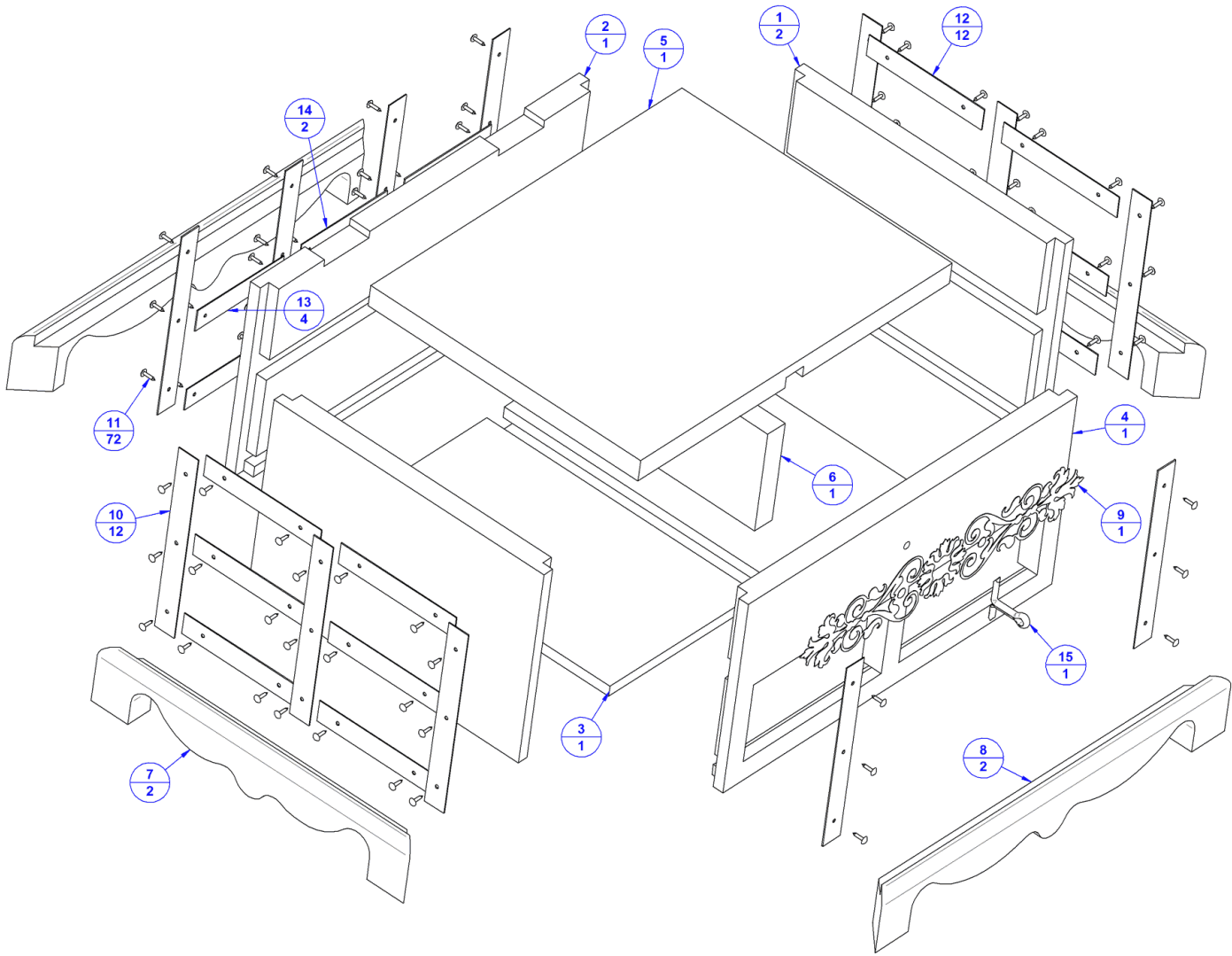


Thickness = 0,5 - 1mm

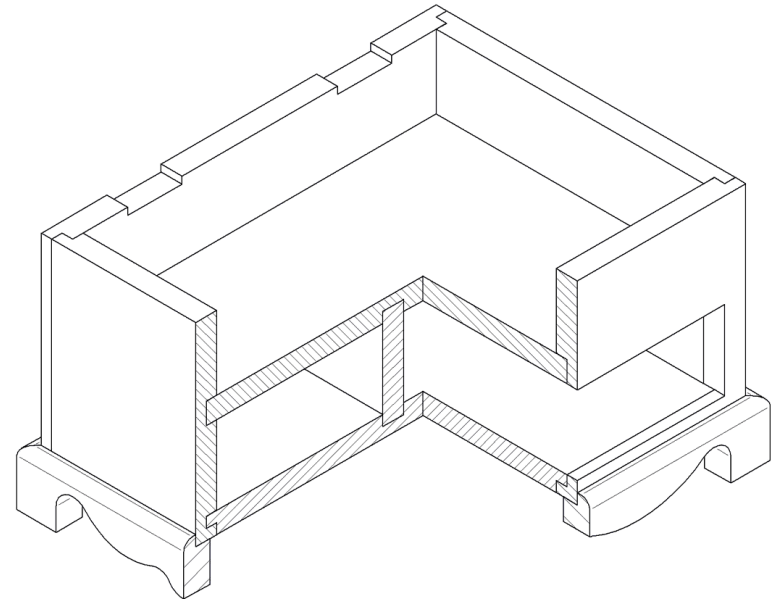
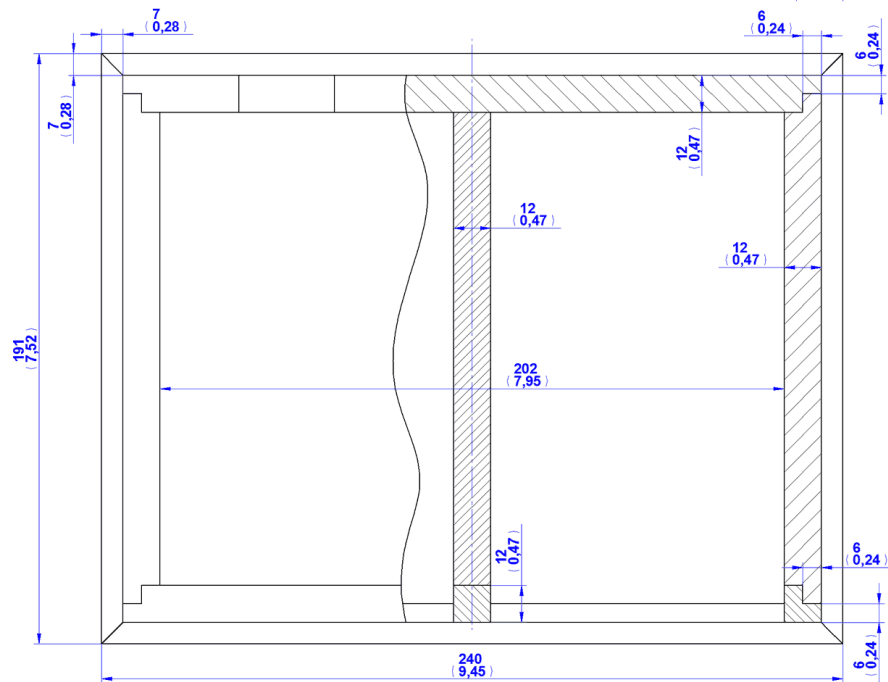
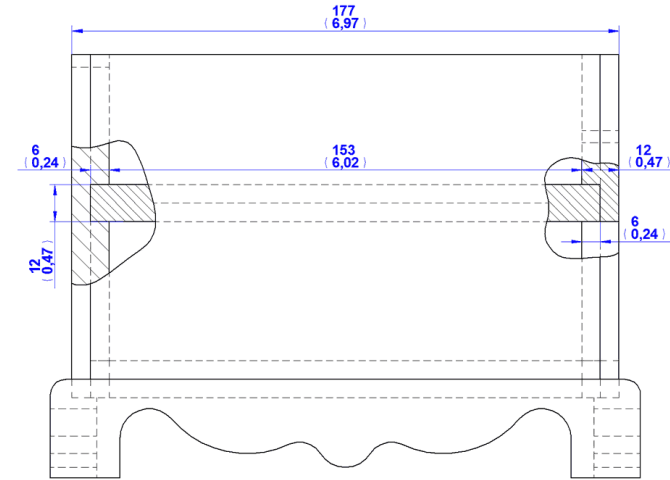


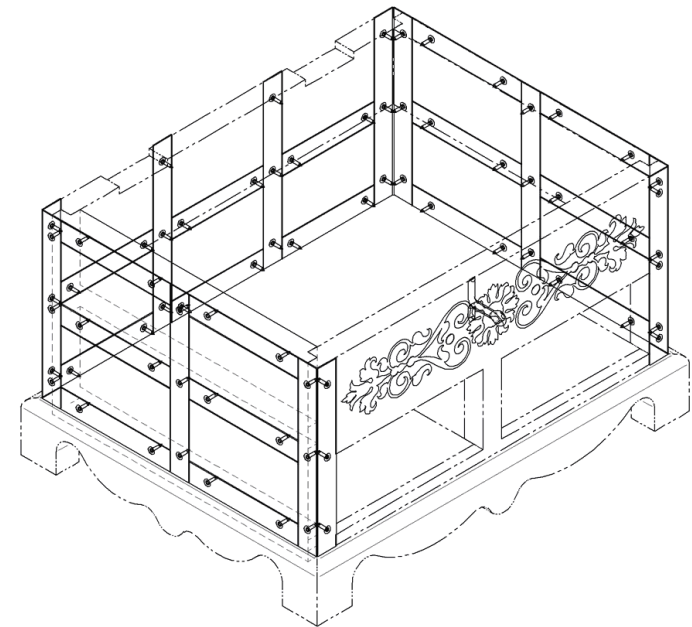
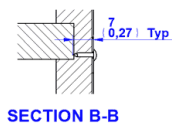
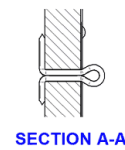
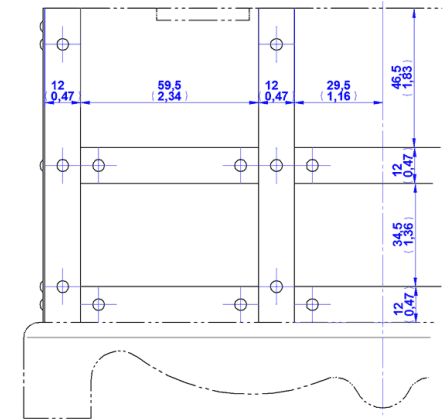
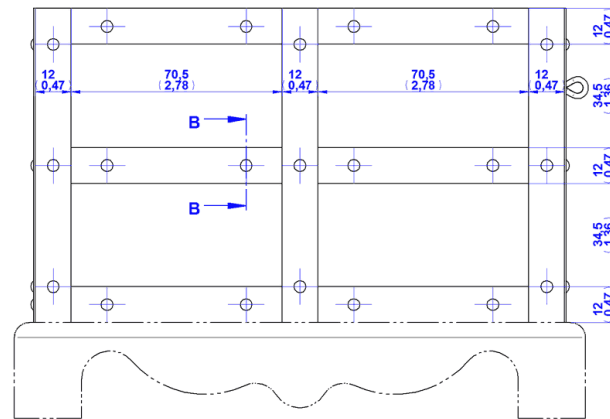
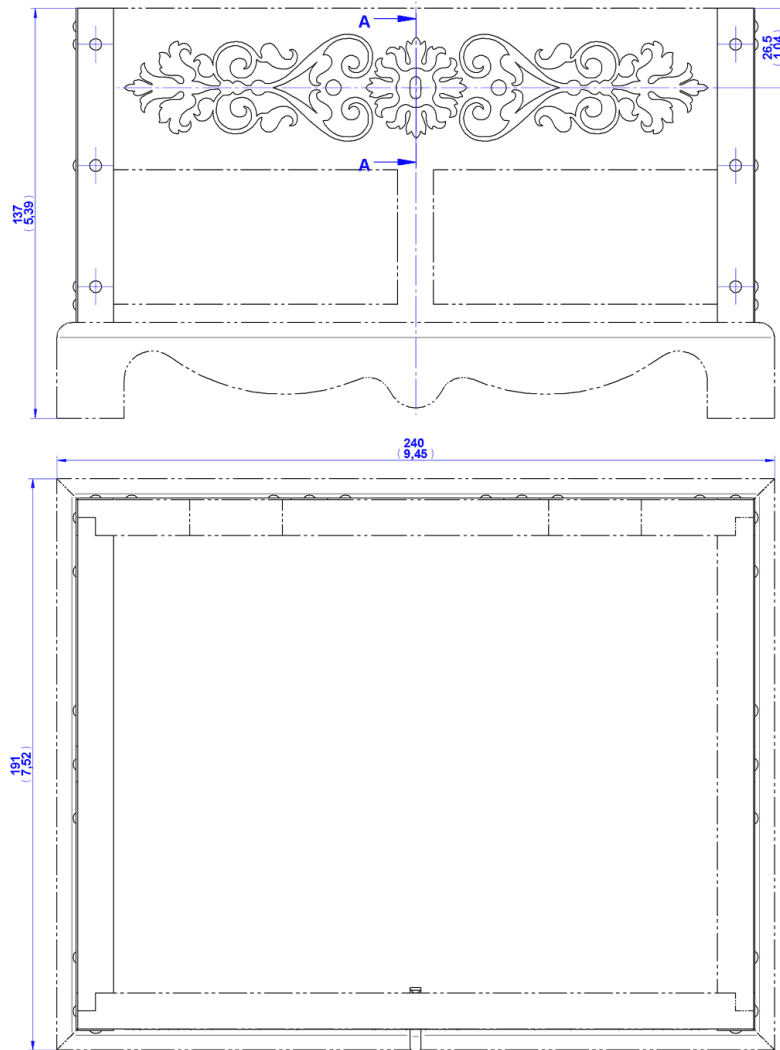


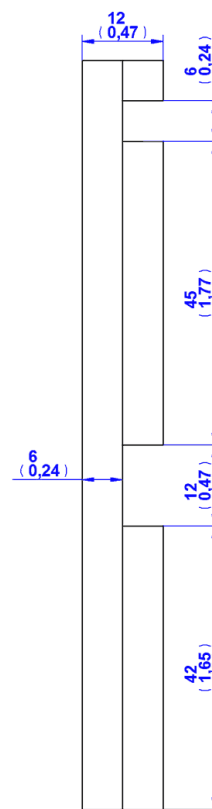
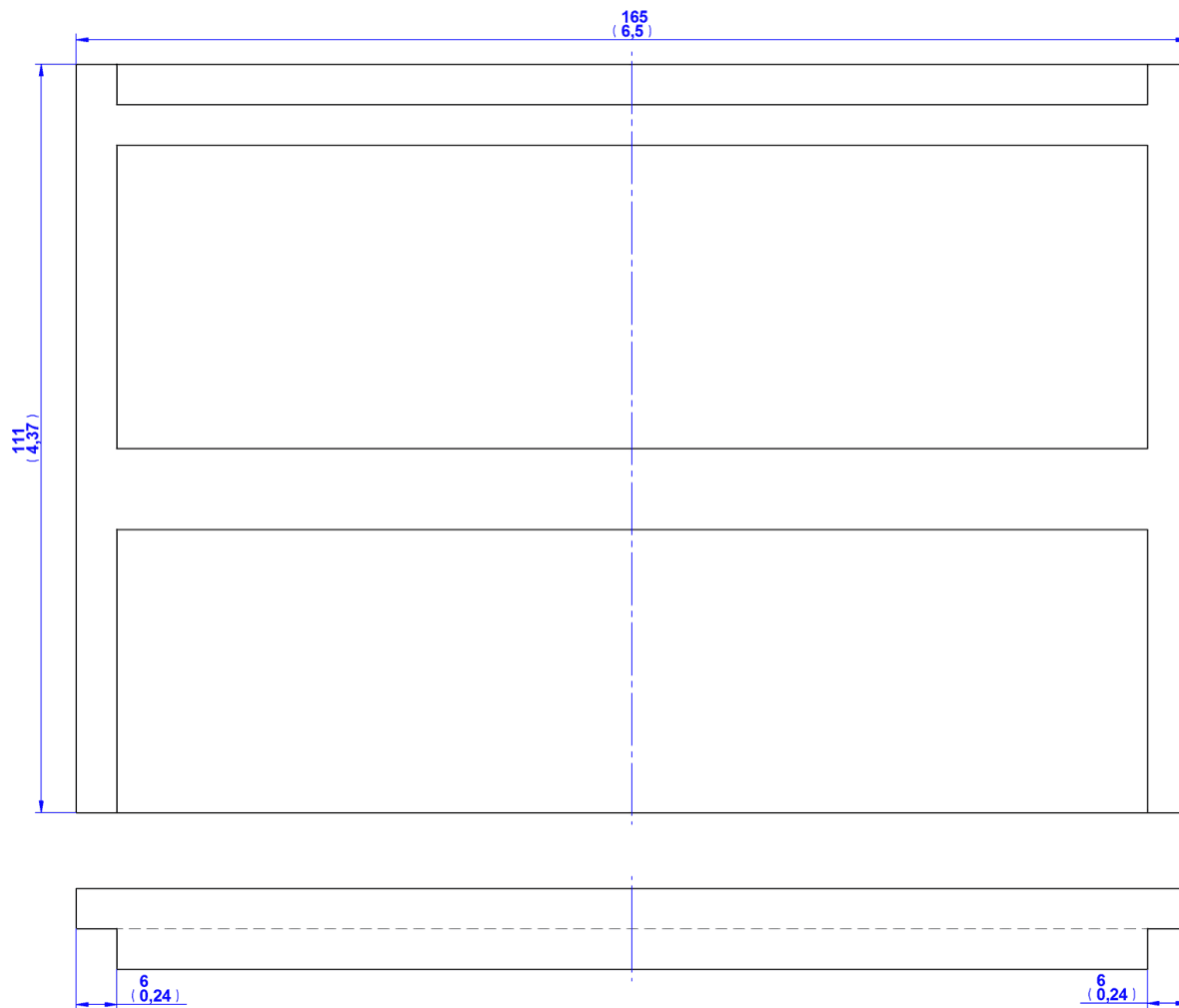
5. Box body subassembly – Parts list



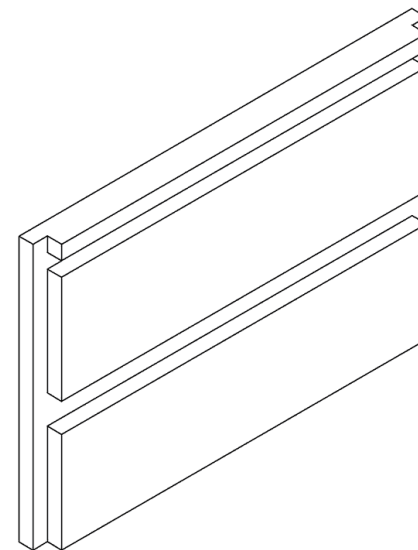
Item Number	Title	Material	Quantity
1	Box side	Wood	2
2	Box back	Wood	1
3	Box bottom	Wood	1
4	Box front	Wood	1
5	Box middle board	Wood	1
6	Box vertical board	Wood	1
7	Box bottom side	Wood	2
8	Box bottom front and back	Wood	2
9	Box pattern	Steel	1
10	Decorative tape 6	Steel	12
11	Tack D1,4 x 8mm	Steel	72
12	Decorative tape 7	Steel	12
13	Decorative tape 8	Steel	4
14	Decorative tape 9	Steel	2
15	Split pin D4mm	Steel	1

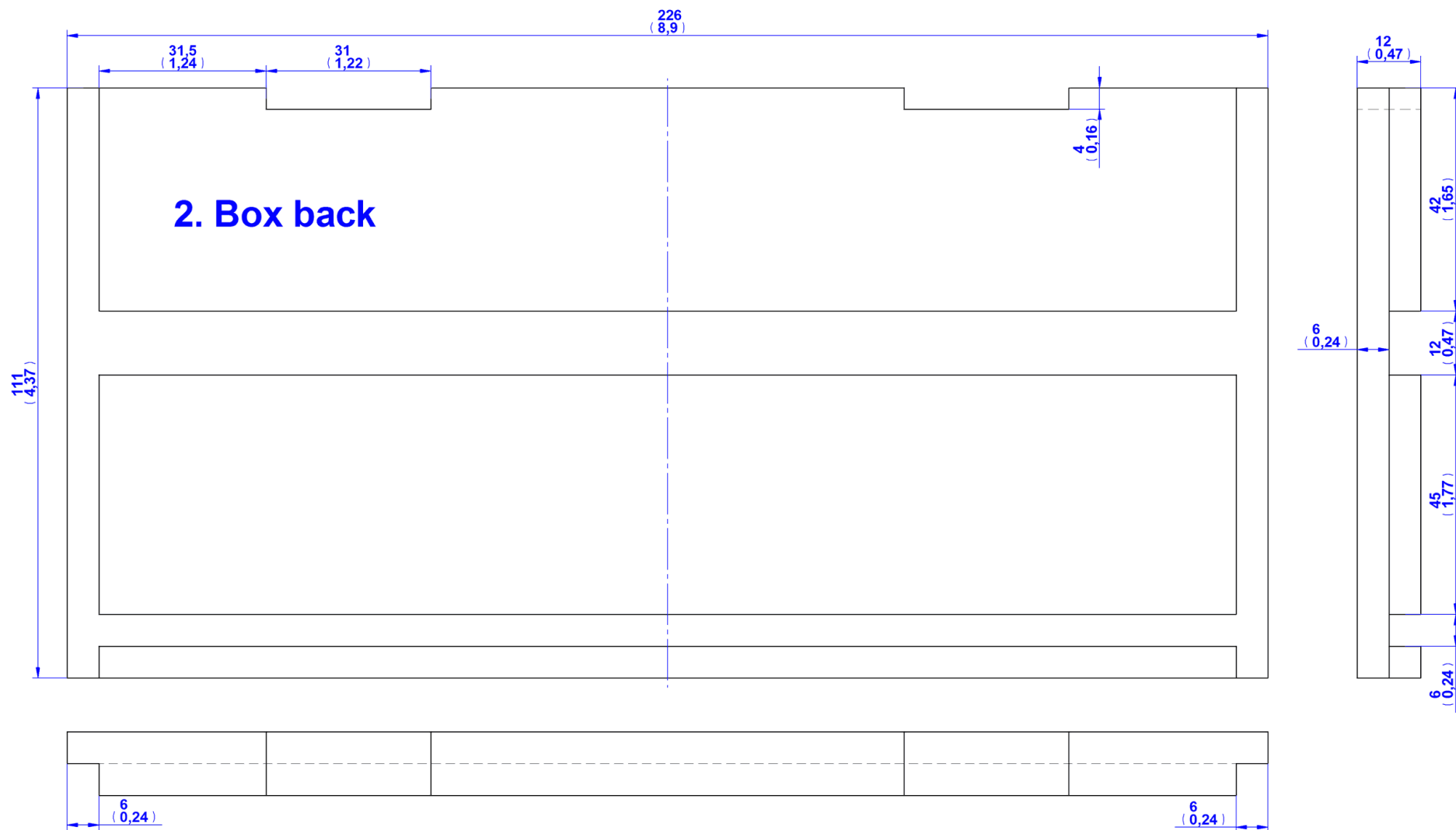
[illegible]

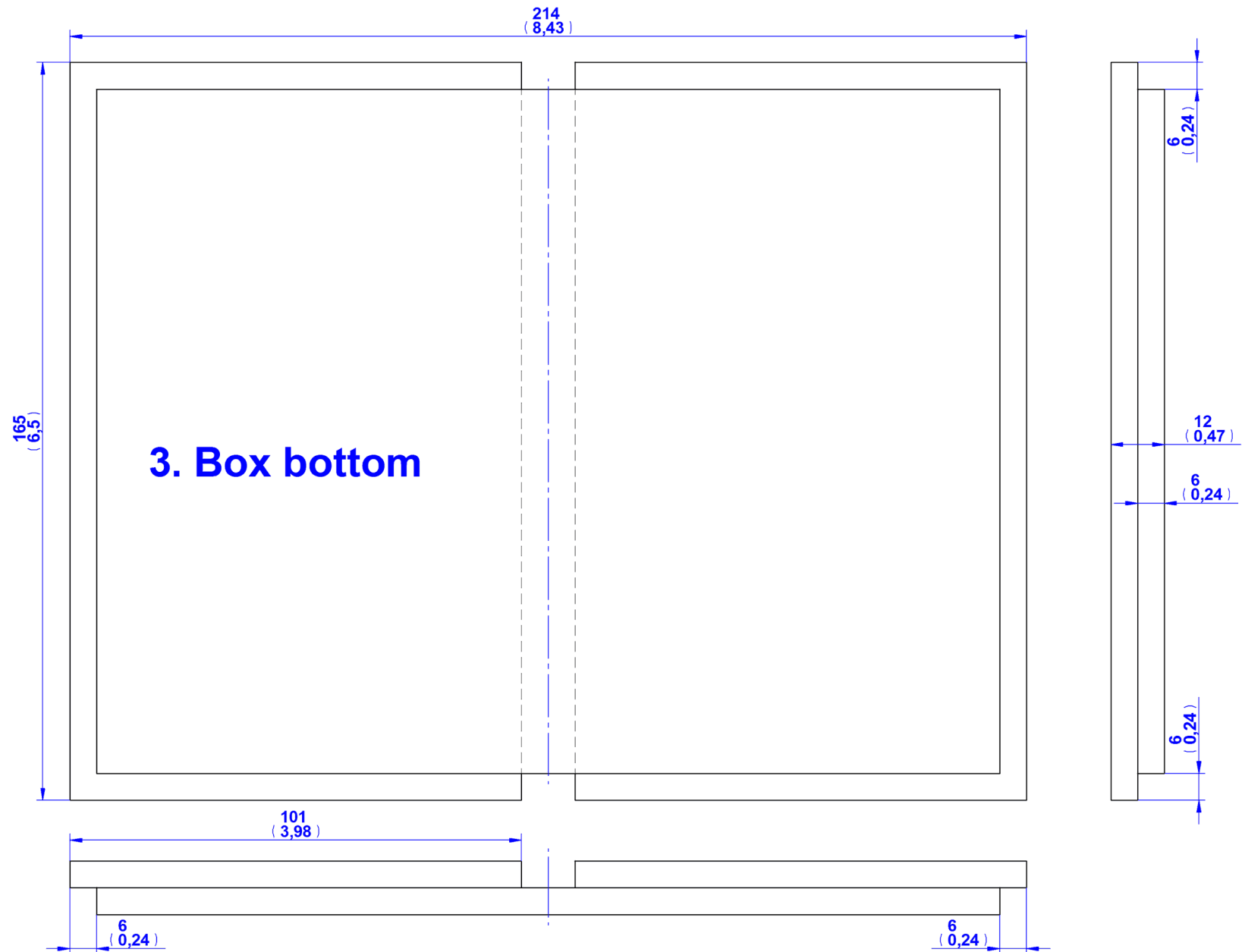
Box body – Decoration tape

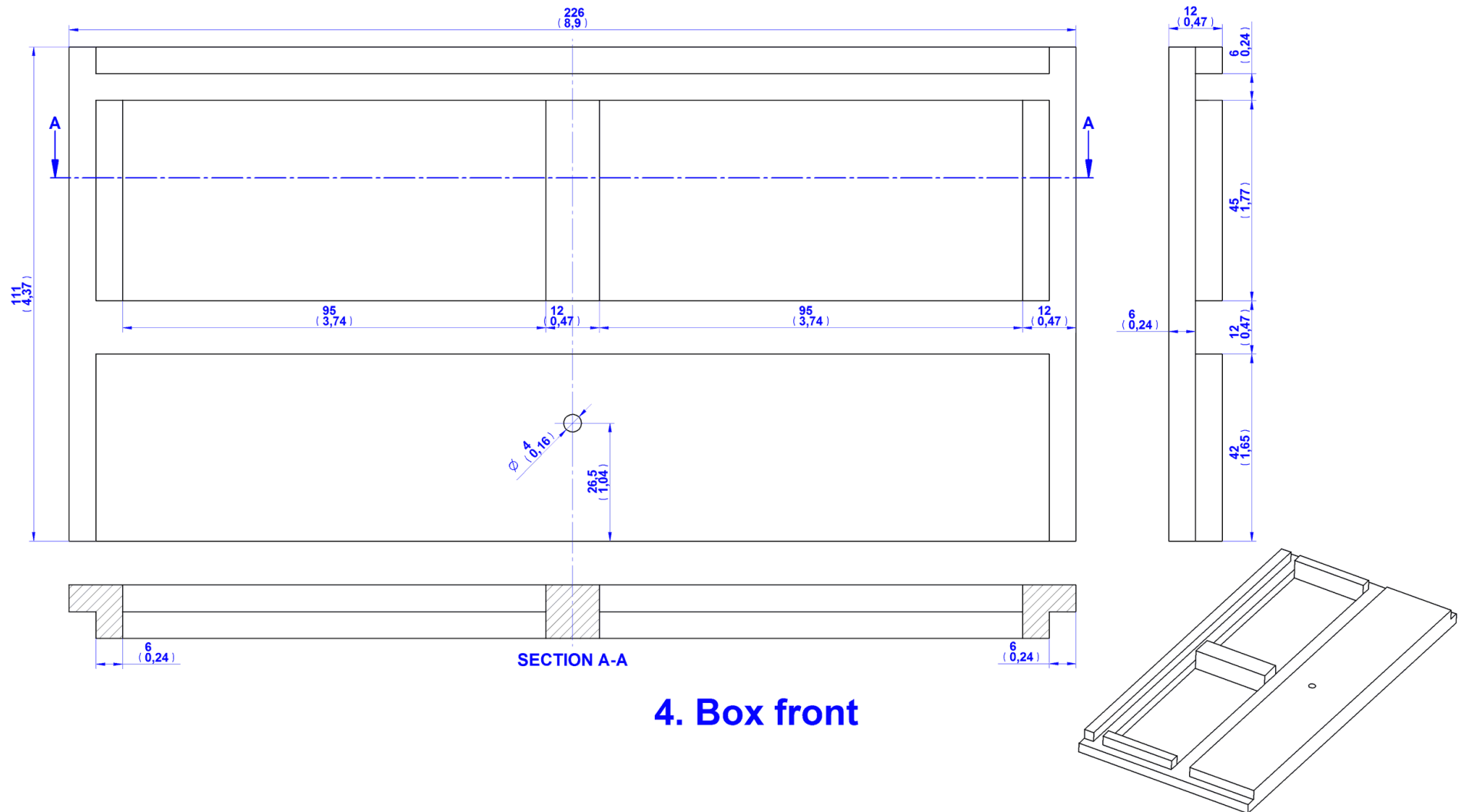


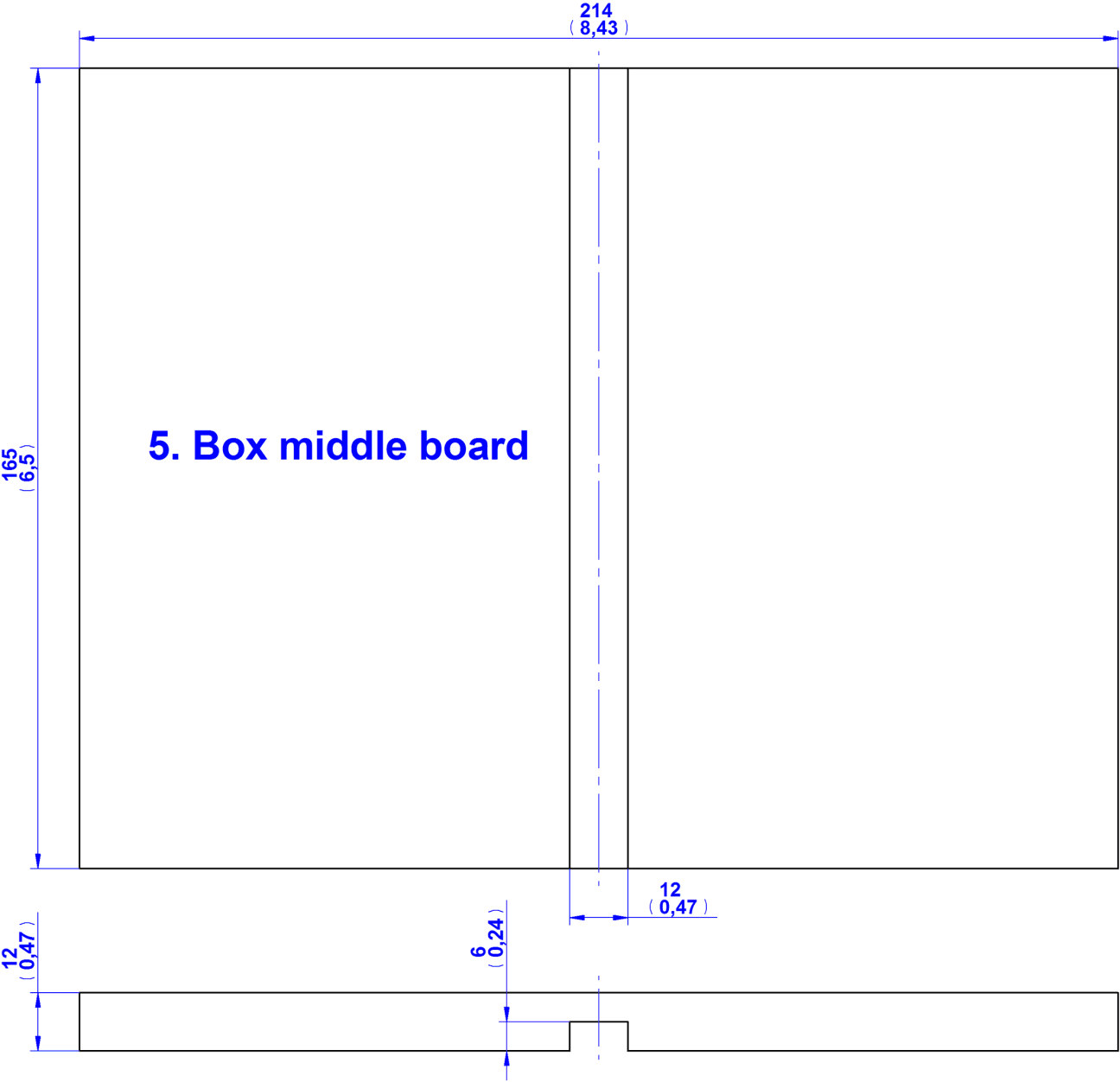
1. Box side

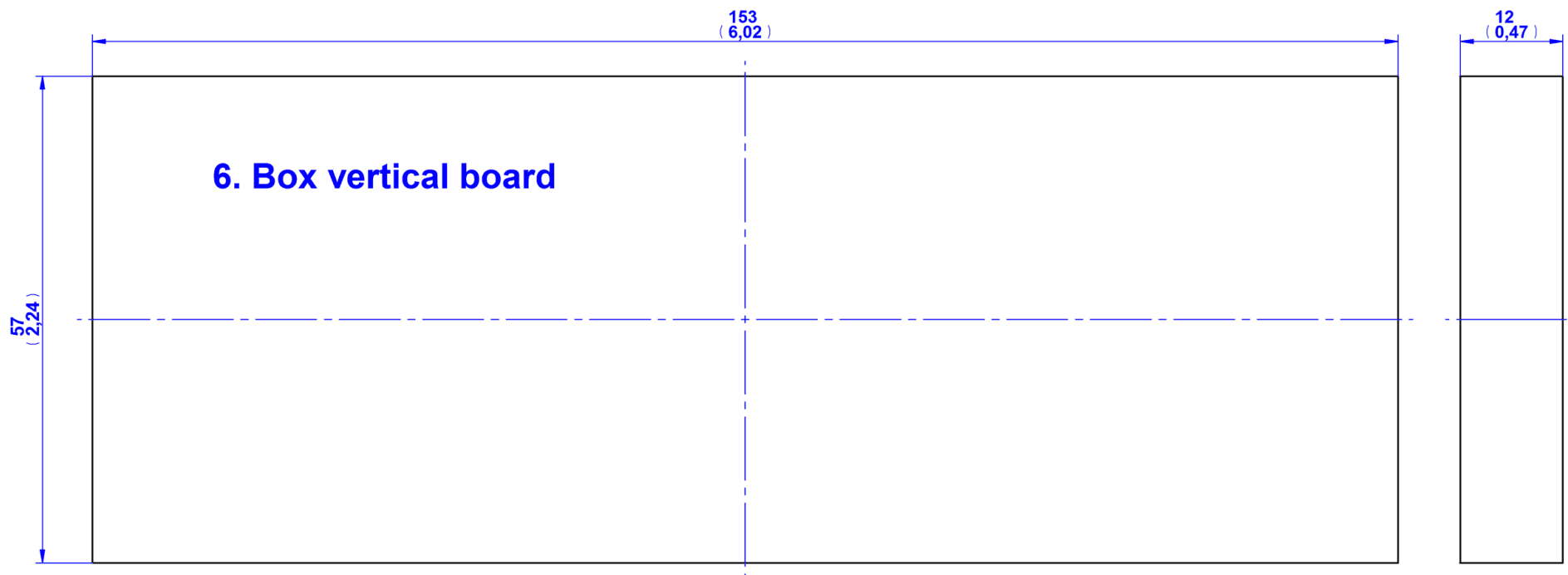


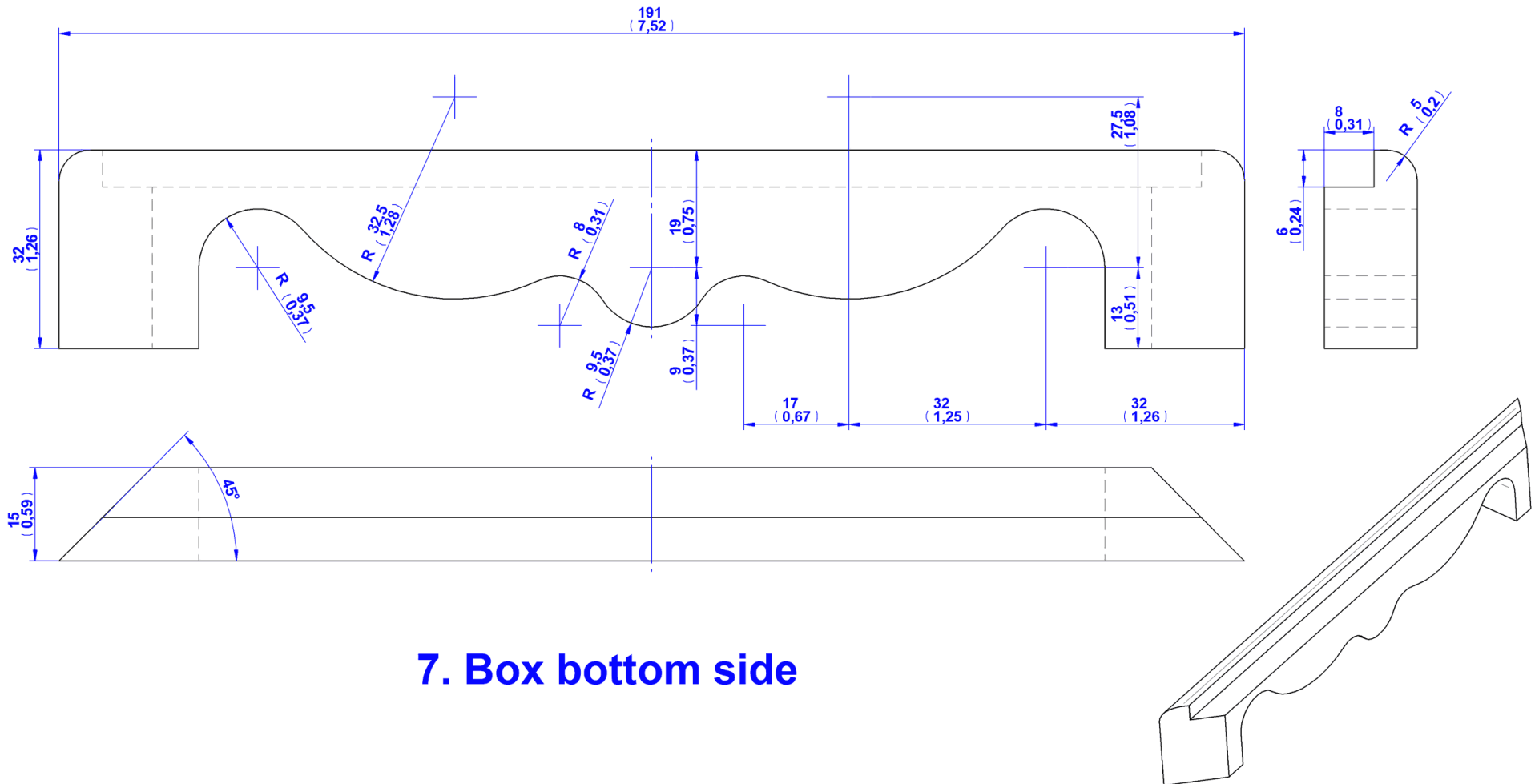




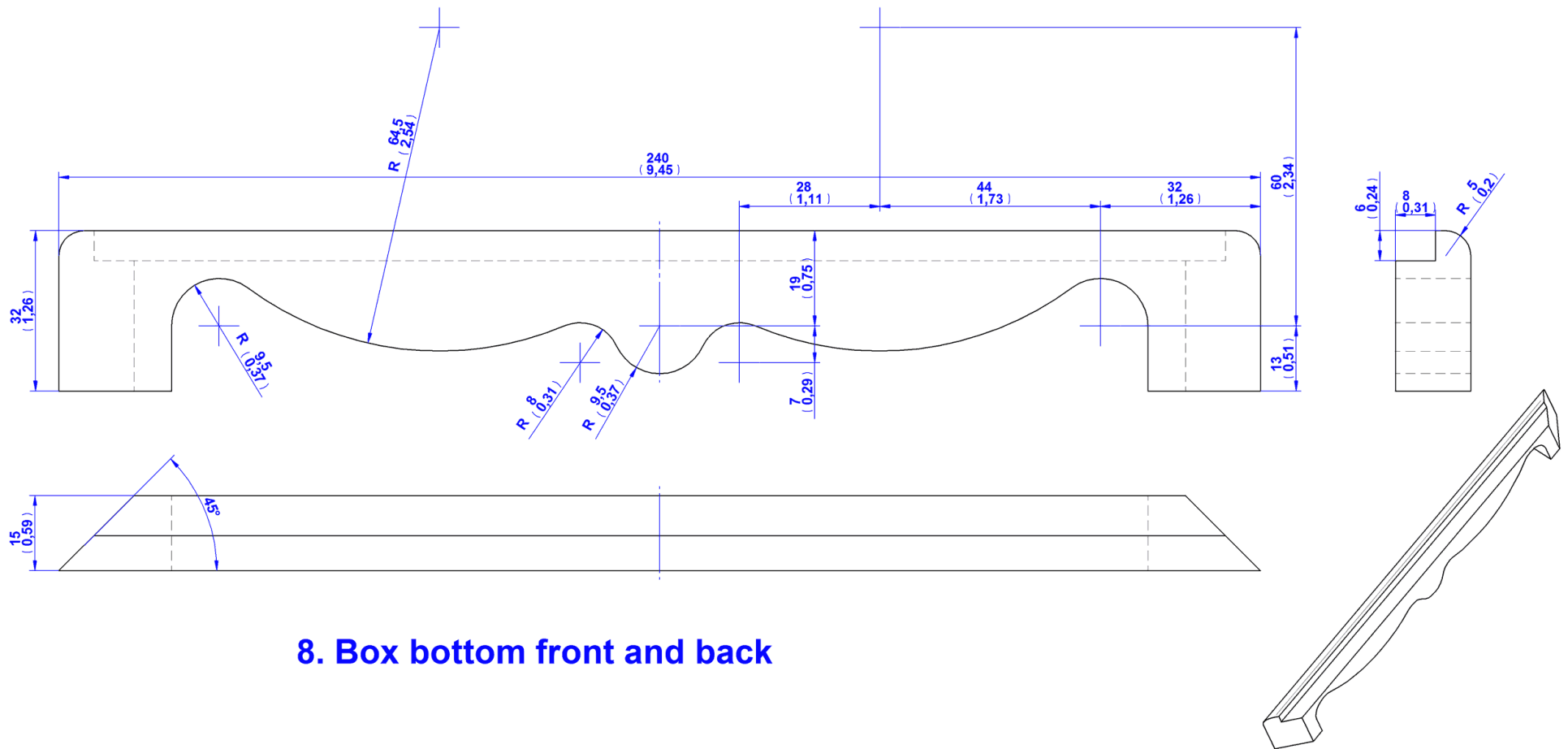








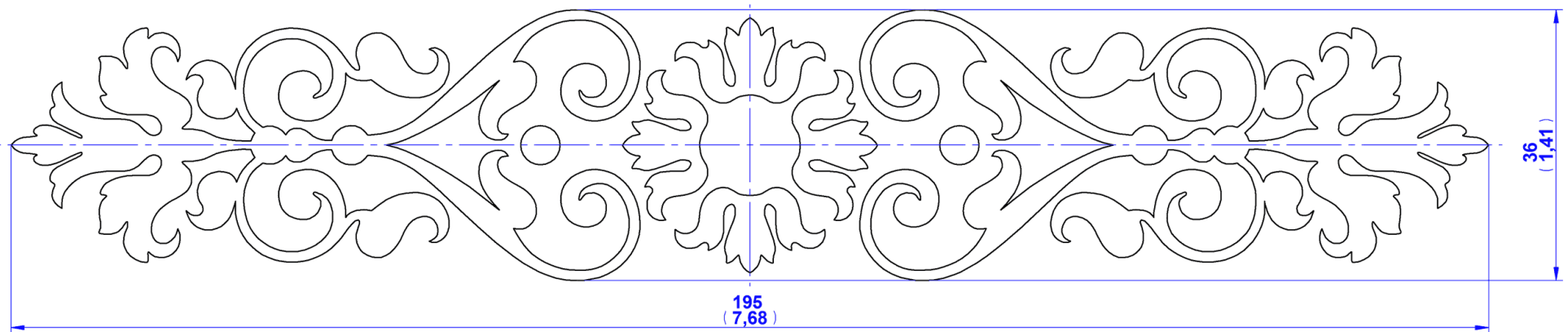
7. Box bottom side

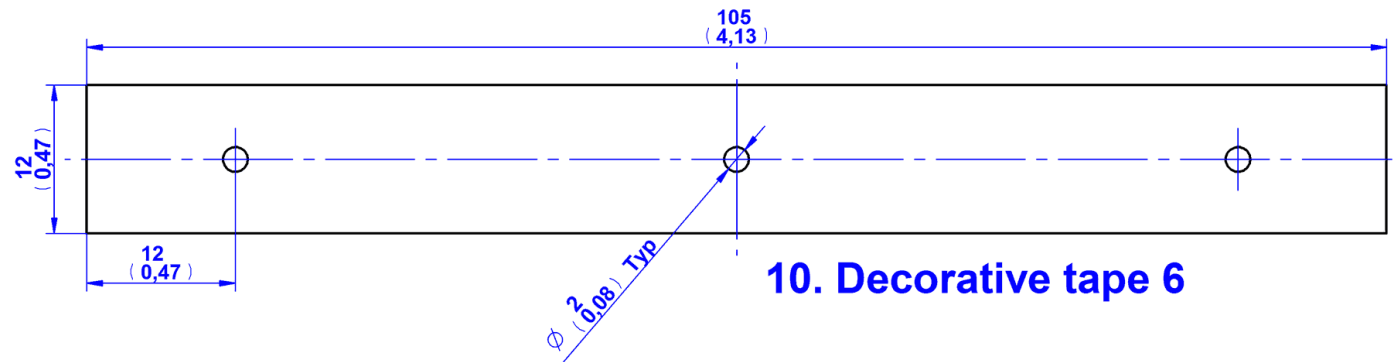
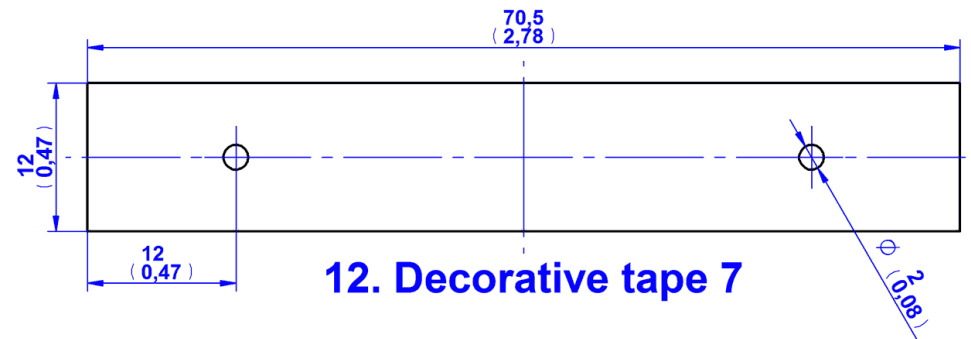
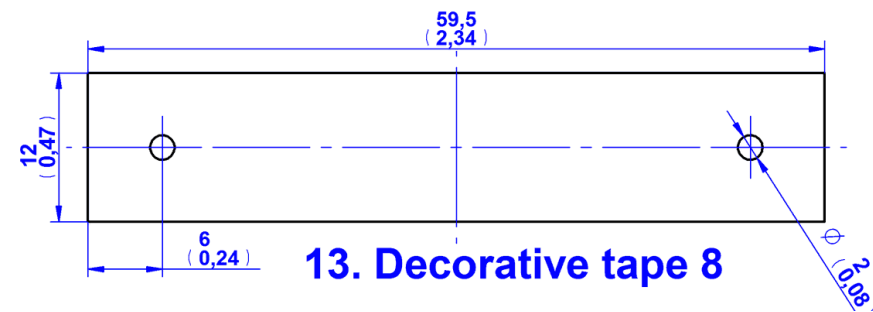
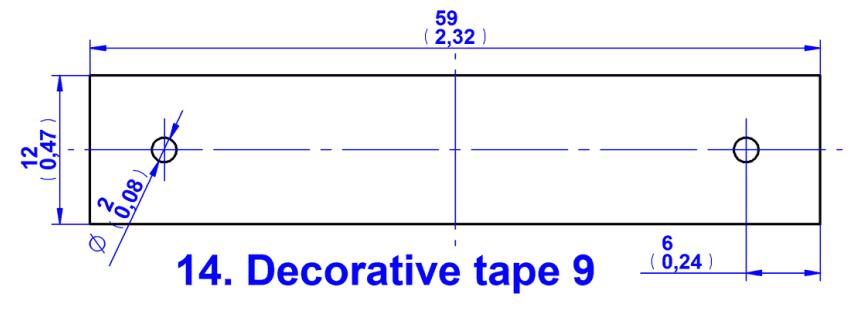


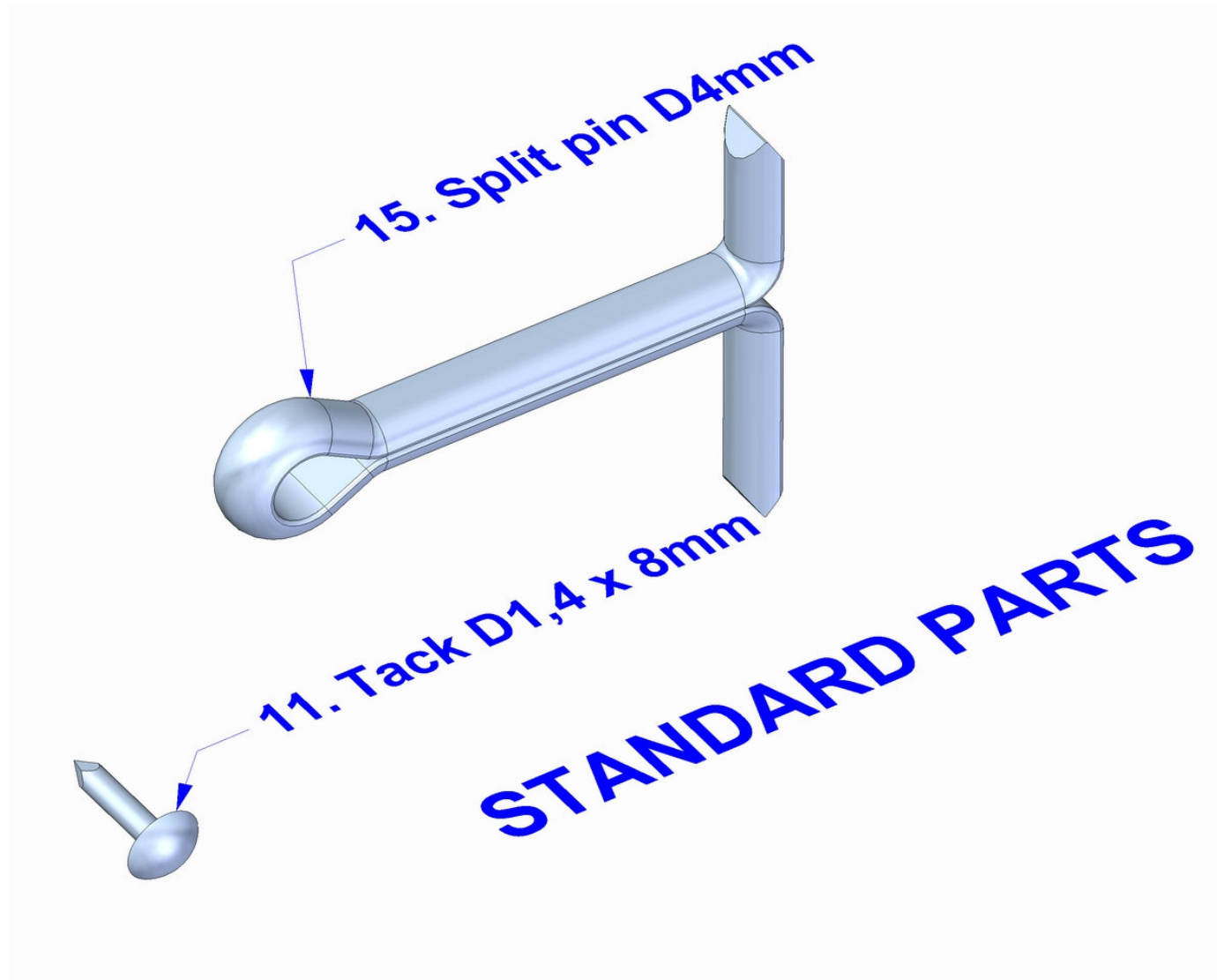
8. Box bottom front and back

9. Box pattern

Thickness = 0,5 - 1mm



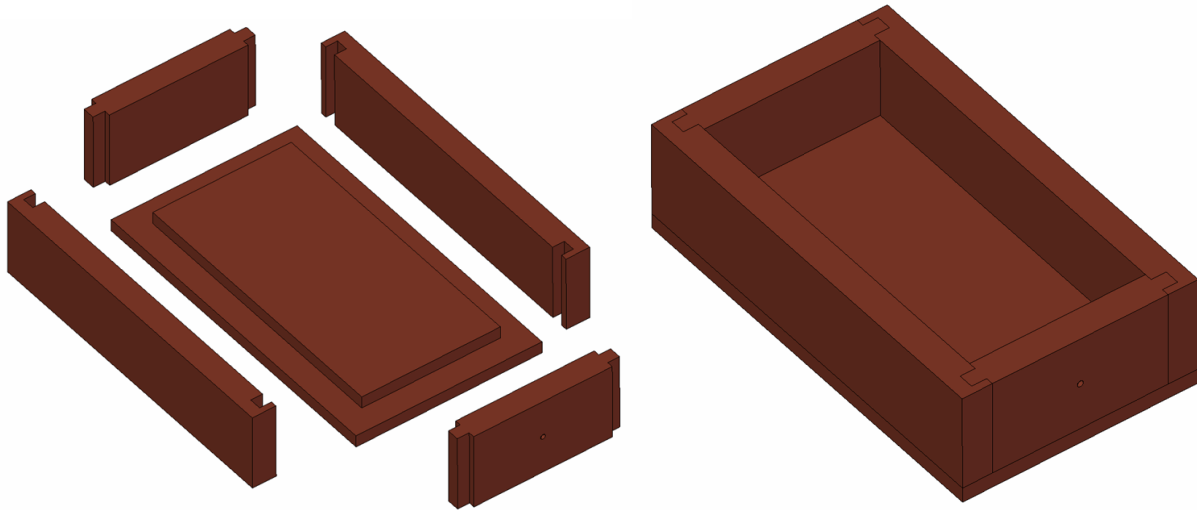
**10. Decorative tape 6****12. Decorative tape 7****Thickness = 0,5 - 1mm****13. Decorative tape 8****14. Decorative tape 9**



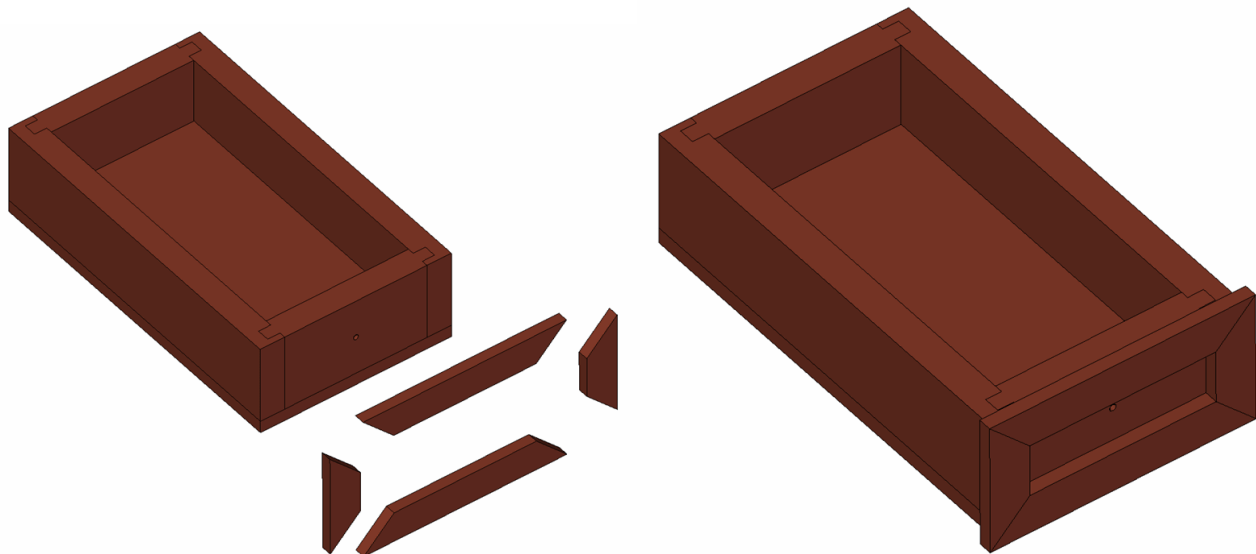
Assemblage instructions

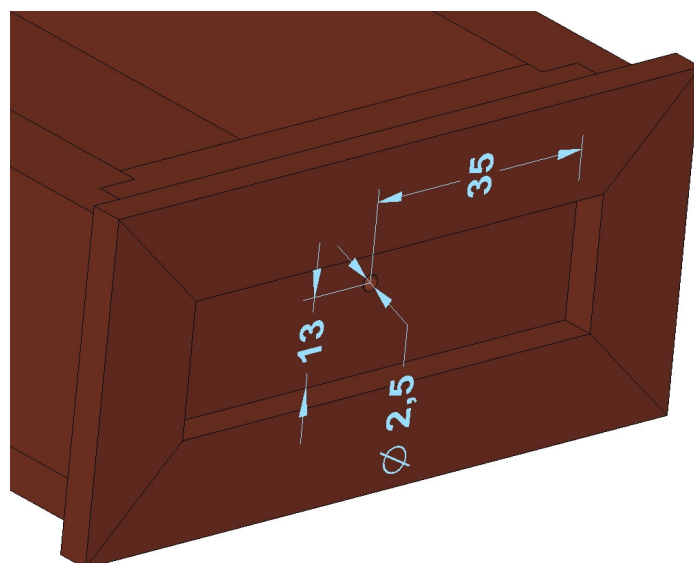
Drawer assemblage

1. Join the Drawer sides (part 1), Drawer front and back (Part 2) and Drawer bottom (part 3) with glue.

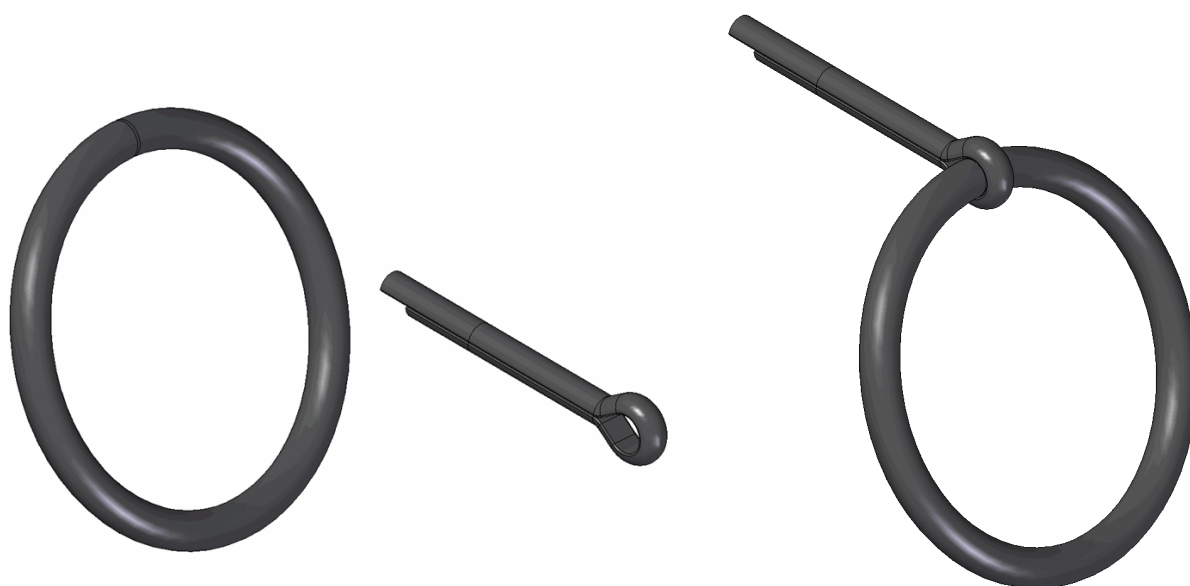


2. Attach the Front decorations 1 (part 6) and Front decorations 2 (part 7) to the subassembly made in the previous step using glue. Then drill holes with diameter D2,5 – 3 mm on the front side.

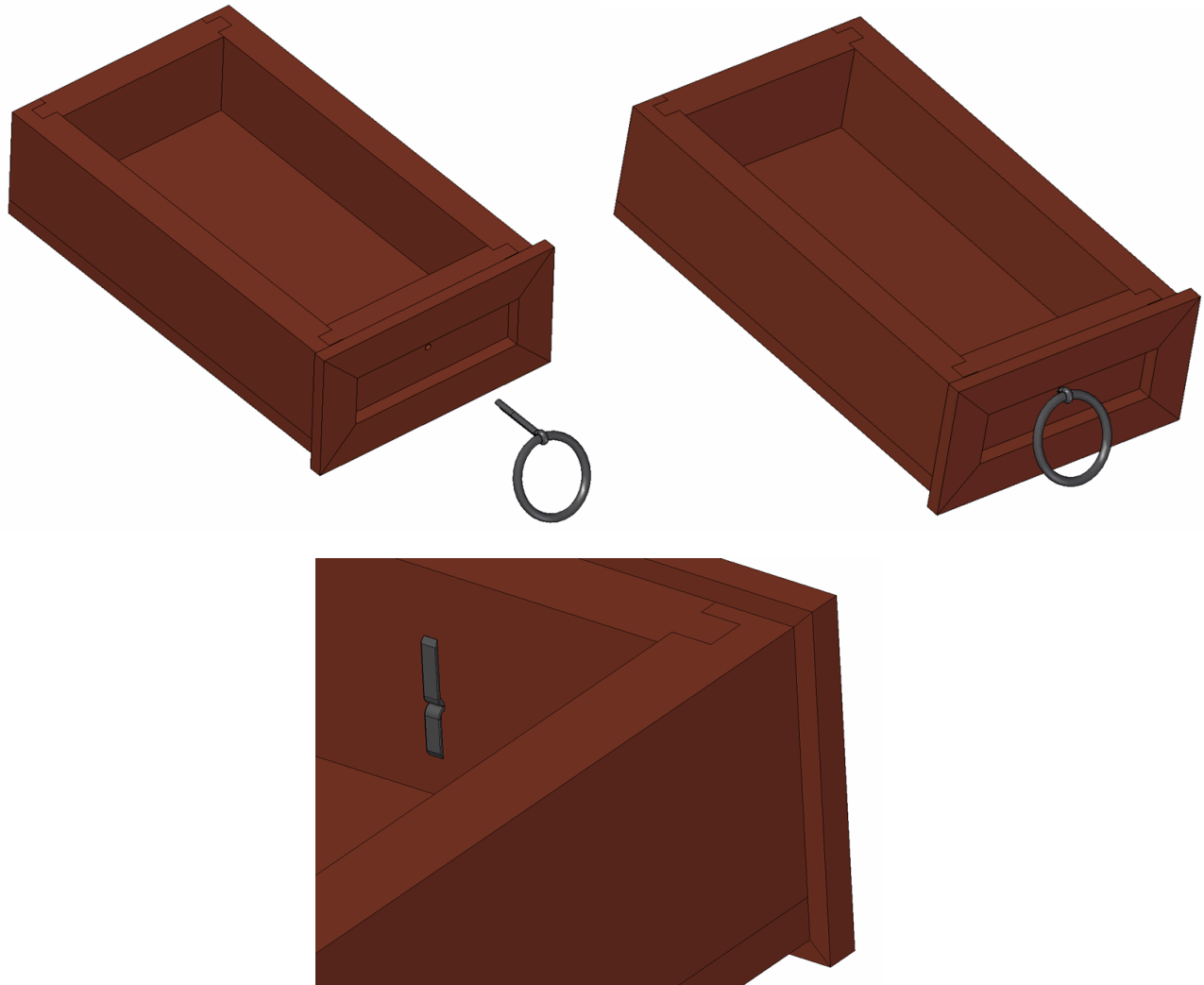




3. Now slide the Drawer ring (part 5) into the eye of the Split pin D2,5mm (Part 4). Push this subassembly into the hole you drill in the previous step.

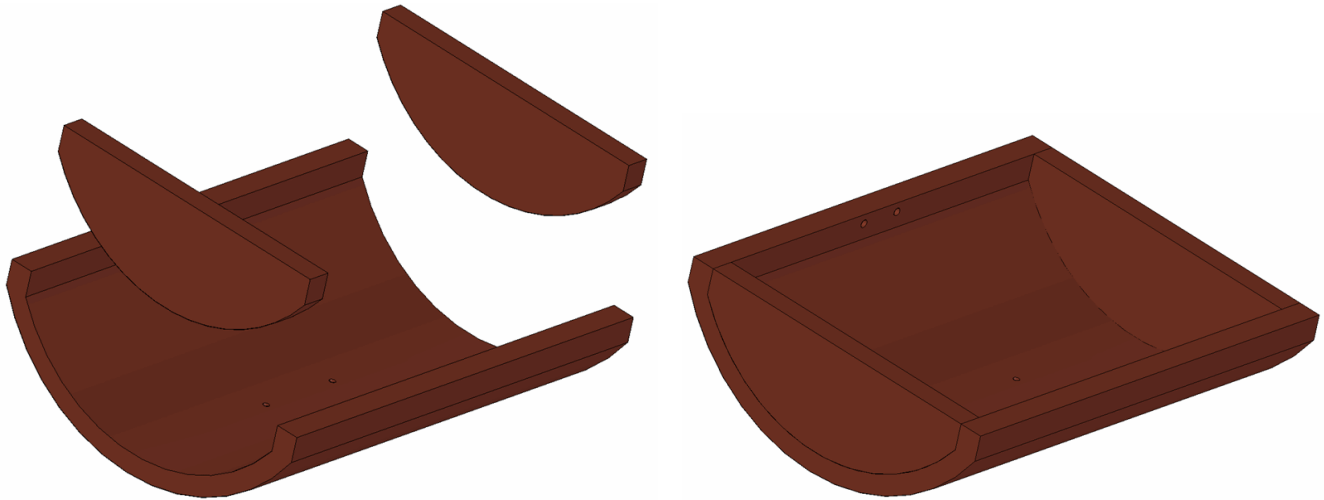


Inside the drawer, you should bend the ends of the Split pin D2,5mm (Part 4) tightly – see the picture for bending detail.

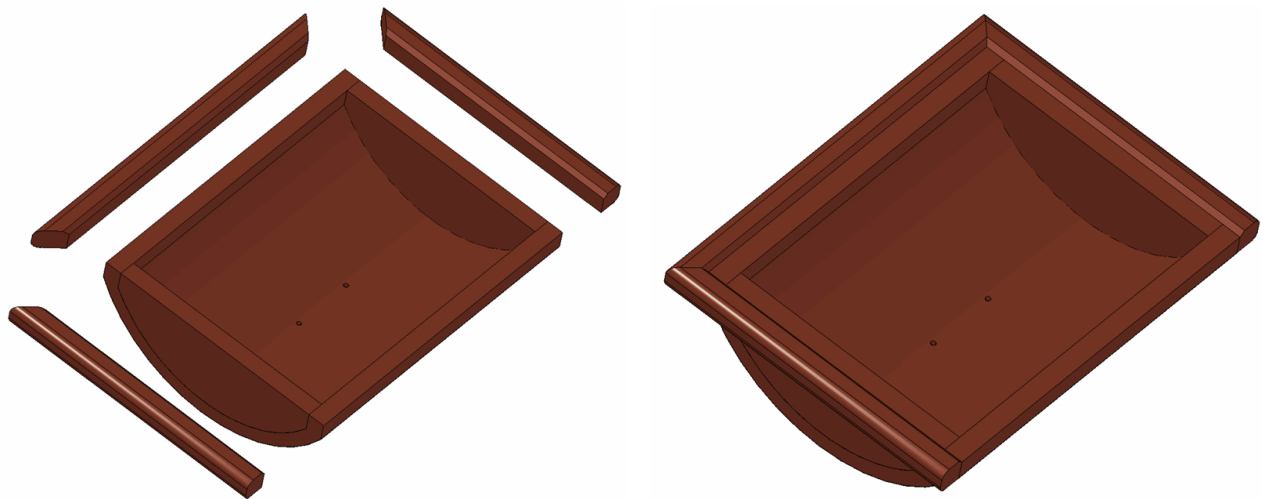


Lid assemblage

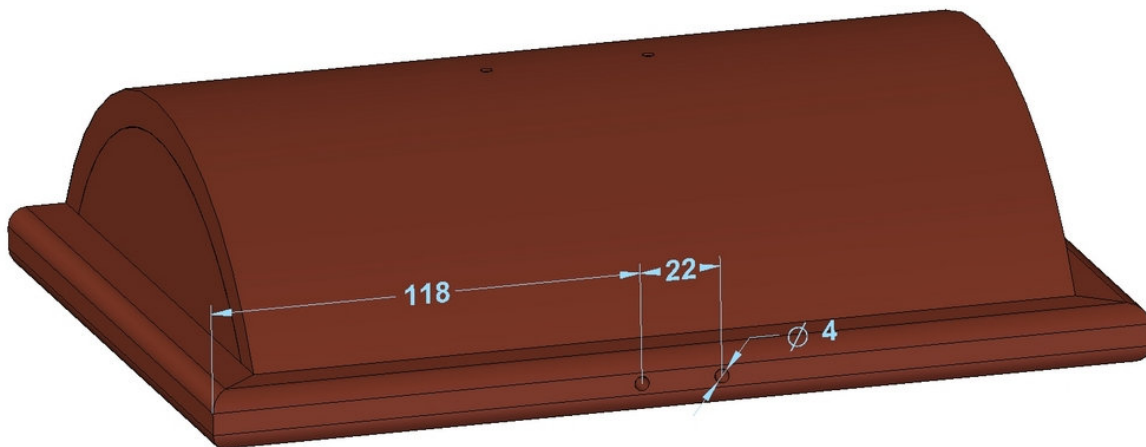
1. Join the Rounded cover (part 1) and Cover sides (part 2) together with glue.



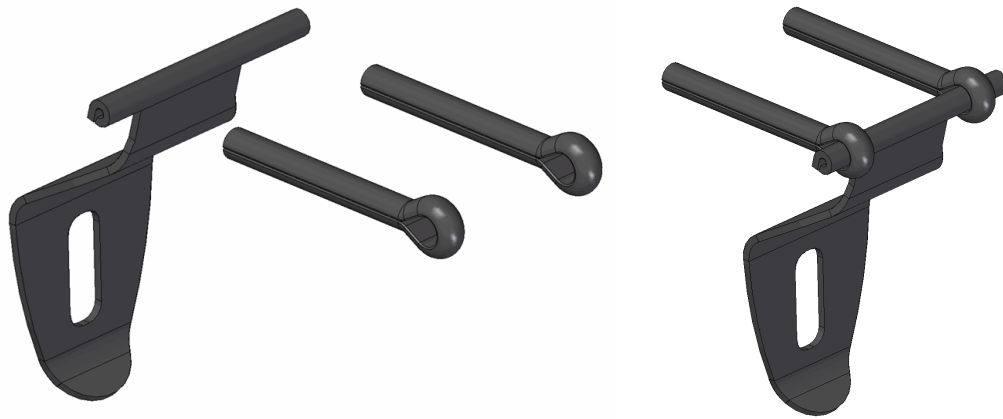
2. Attach the Lid side (part 3), Lid front (part 4) and the Lid side mirror (part 5) with glue to the subassembly made in the previous step.



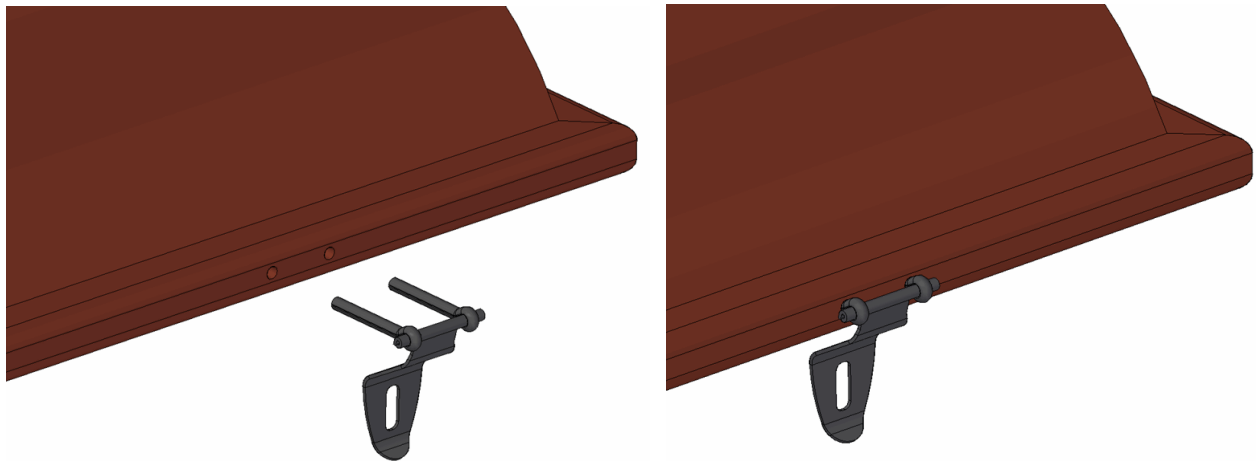
On the front side of this subassembly, you should drill two holes with D4 – 4,5mm diameter.



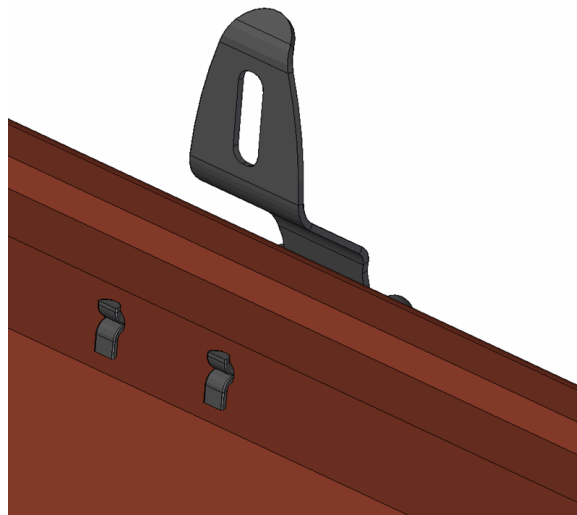
3. Slide the Lid lock (Part 16) into the eyes on the Split pins D4mm (part 15).



Now push the Split pins D4mm (part 15) into the holes you drilled in the previous step.



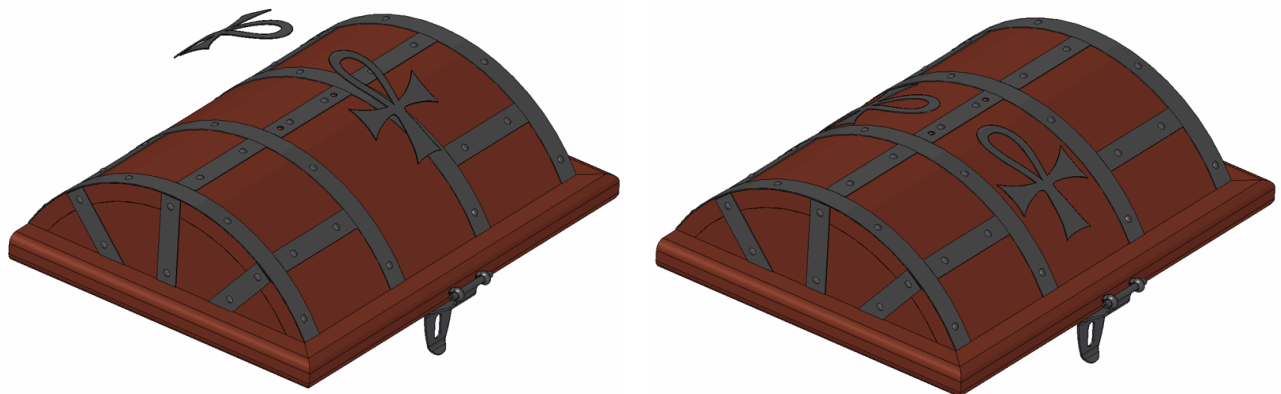
From the inner side of this subassembly, you should bend the ends of the Split pins D4 mm (part 15) tightly – see the picture for bending detail.



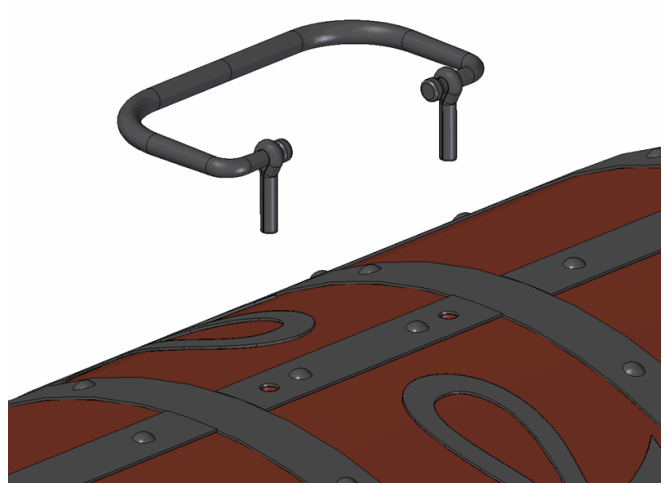
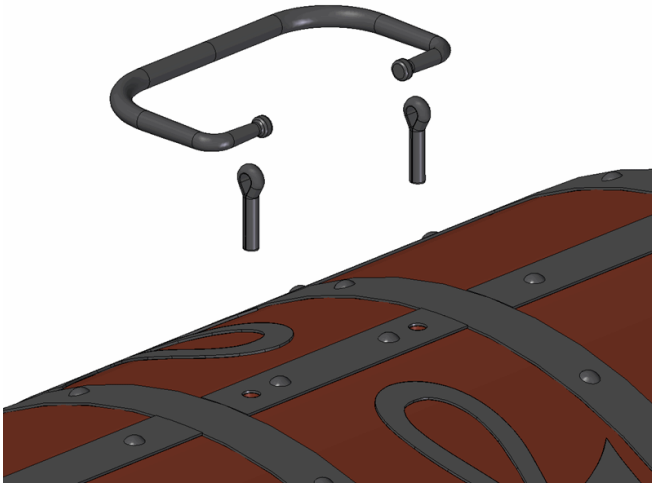
4. Attach the Decoration tapes (parts 8, 10, 11, 13 and 14) to the subassembly made in the previous step using glue. When the glue become dry, hammer the Tacks D1,4 x 8mm (part 9) into the holes already made on the Decoration tapes (parts 8, 10, 11, 13 and 14).



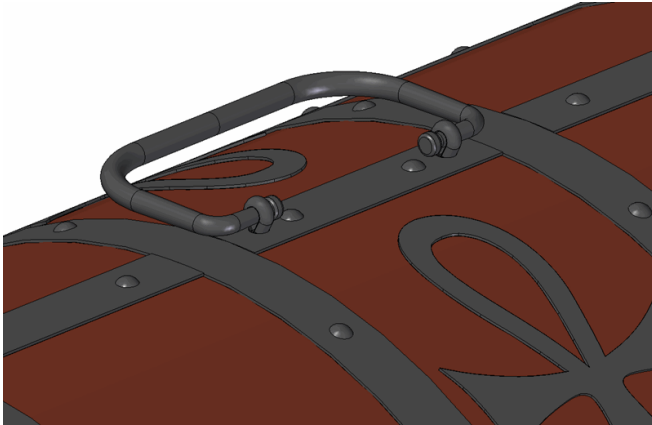
5. Attach the Lid patterns (part 12) with glue to the subassembly made in the previous step.



6. Now, slide the Lid handle (part 7) into the eyes on Split pins D3,2mm (part 6).

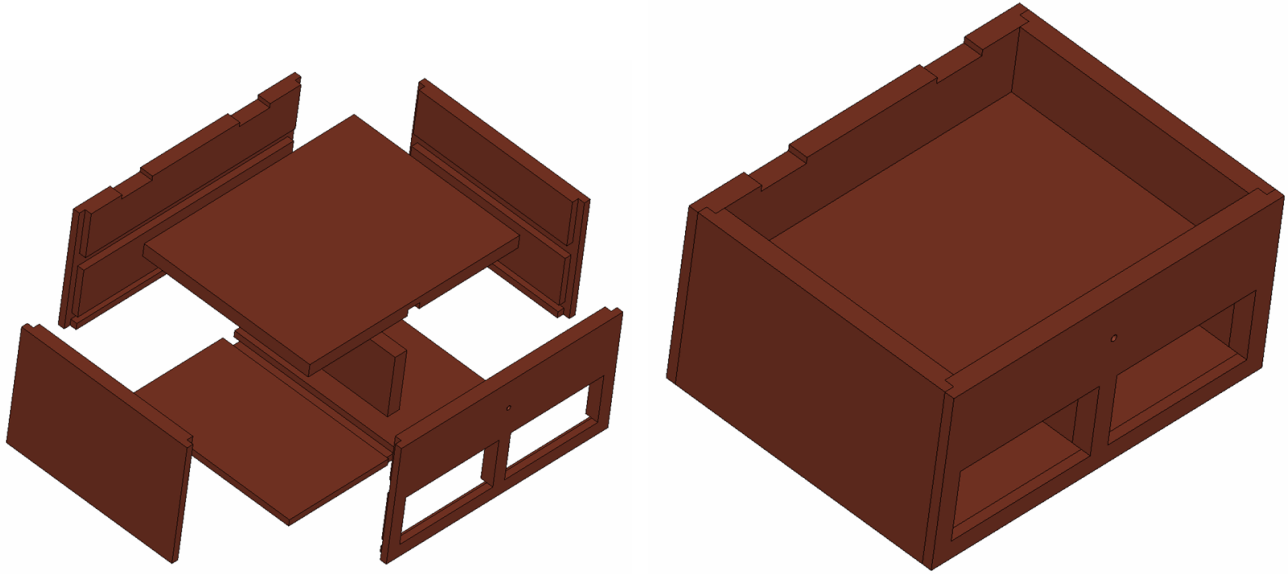


Push the Split pins D3,2mm (part 6) into the holes on Rounded cover (Part 1). Bend the Split pins D3,2mm (part 6) ends from the inner side of this subassembly.

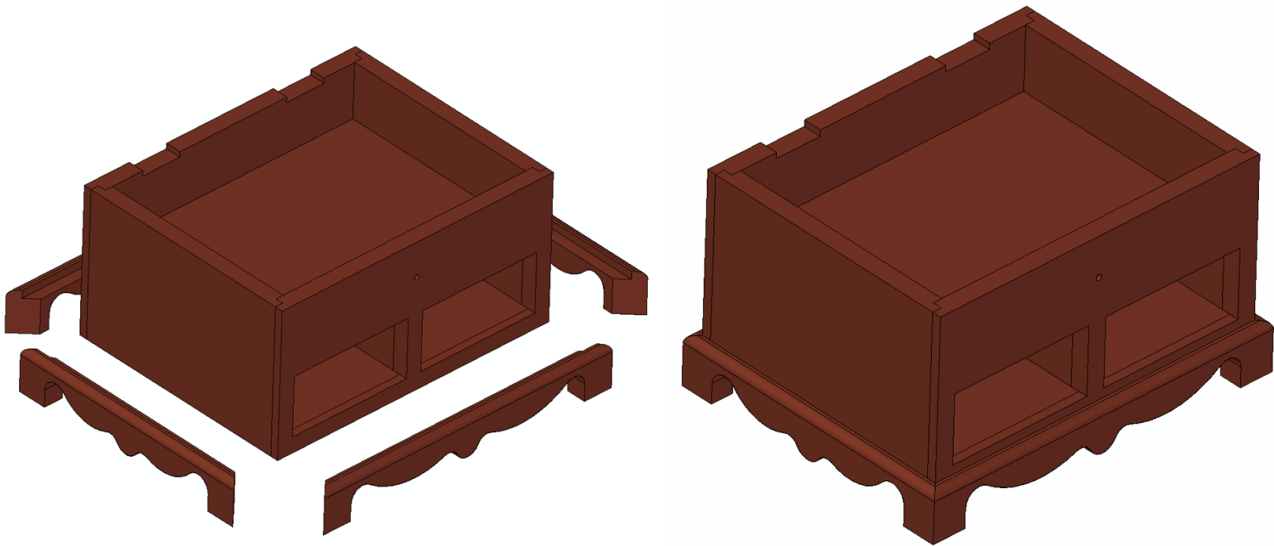


Box body assemblage

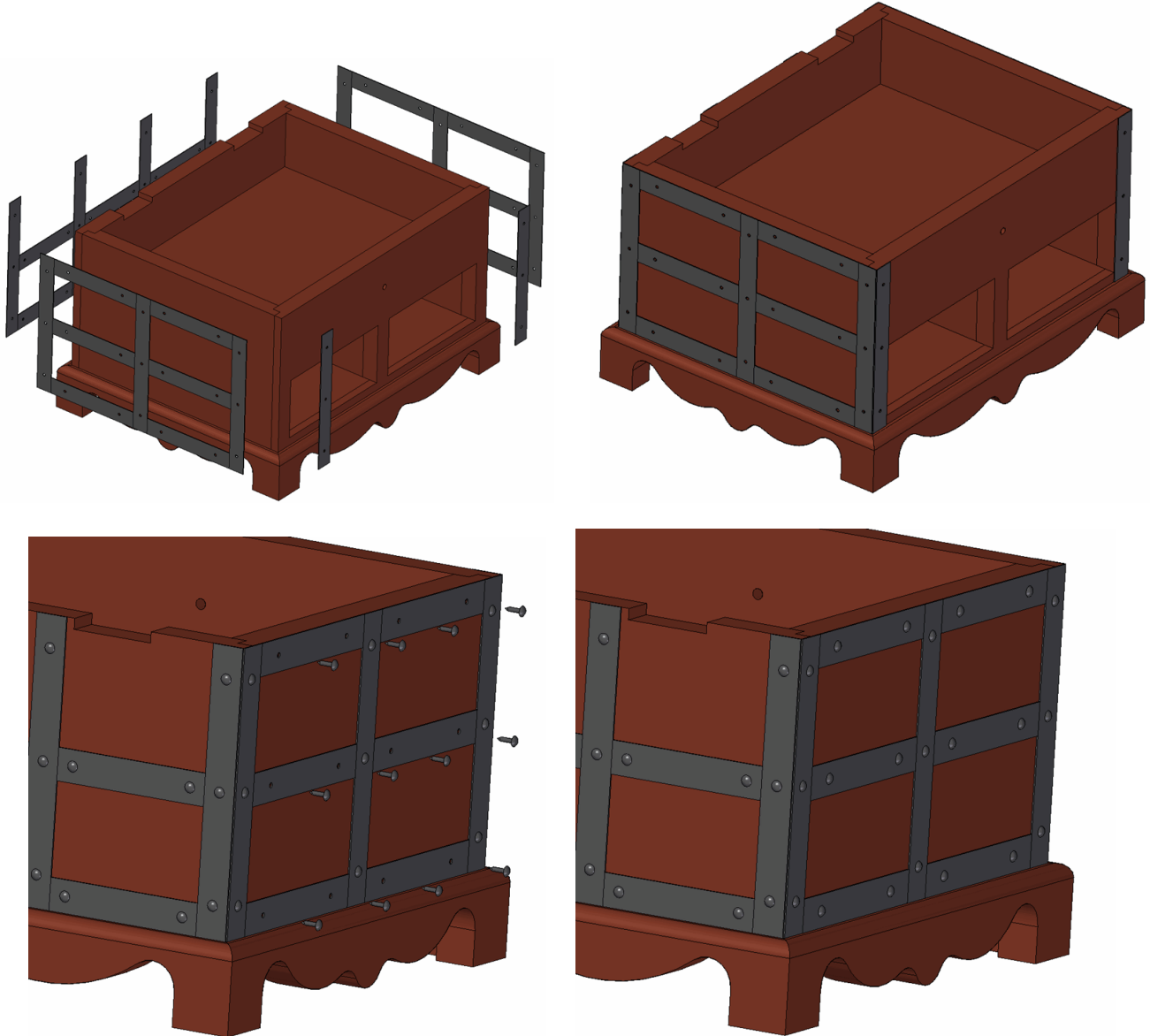
1. Join the Box sides (part 1), Box back (part 2), Box bottom (part 3), Box front (part 4), Box middle board (part 5) and the Box vertical board (part 6) together with glue.



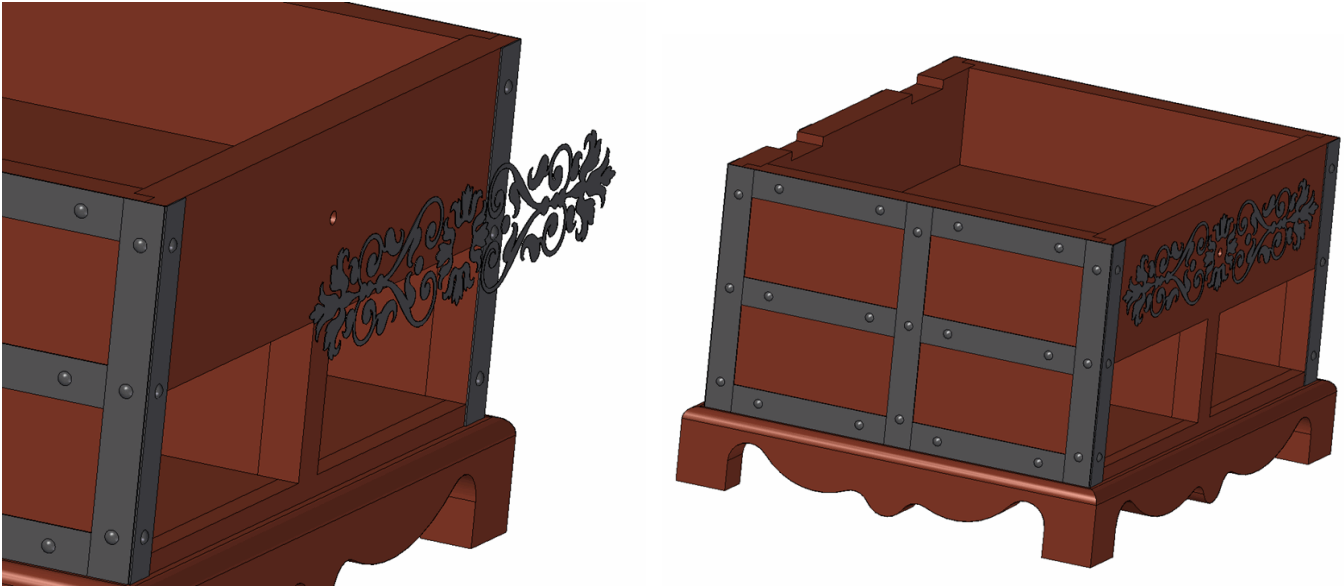
2. Attach the Box bottom sides (part 7) and the Box bottom front and back (part 8) using glue to the subassembly made in the previous step.



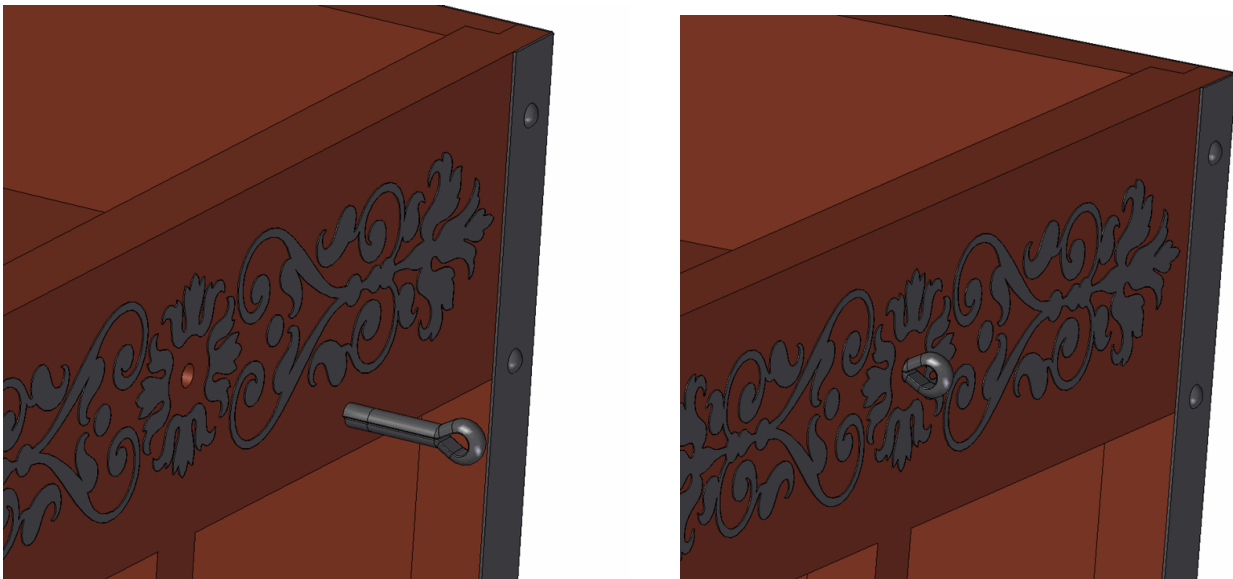
3. **Attach the Decoration tapes (parts 10, 12, 13 and 14) to the subassembly made in the previous step using glue. When the glue gets dry, hammer the Tacks D1,4 x 8mm (part 9) into the holes already made on the Decoration tapes (parts 10, 12, 13 and 14).**



4. Attach the Box pattern (part 9) with glue to the subassembly made in the previous step.

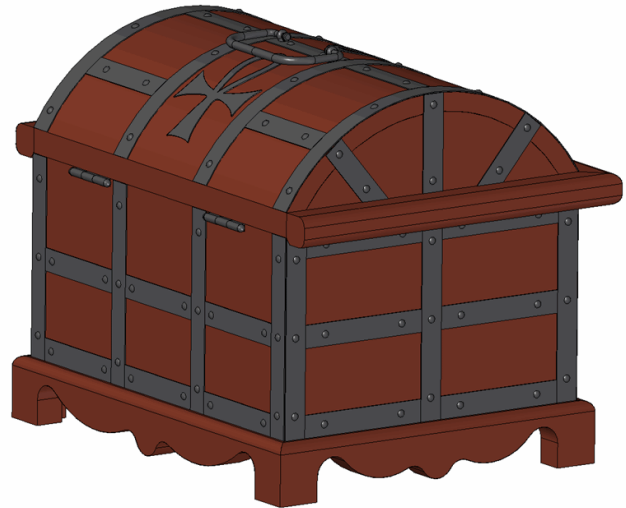
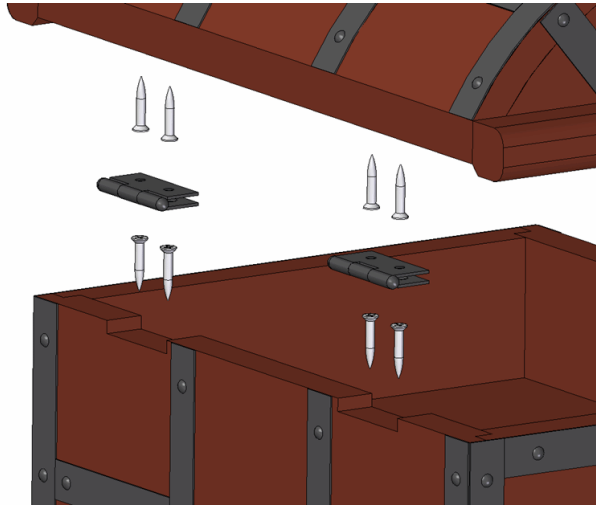


5. Push the Split pin D4mm (part 15) into the hole on the Box front (Part 4) and then bend the Split pin D4mm (part 15) ends from the inner side.



Antique jewelry box assemblage

Fasten the Lid subassembly to the Box Body subassembly using Hinges (Part 2 – Main assembly parts list) and Woodscrews D2,5 x 16mm (Main assembly parts list)



Put the drawers on their places.

