

'Milking Time'



Celtic Rose Designs

18 The Clocktower

Hollingwood

Chesterfield

S43 2PE

Tel: 01246 281217

www.celticroseandcraft.com

What is Cross Stitch?



Basically it is a series of hand sewn X's, which are stitched on a piece of fabric to create a finished work of art. Each individual cross-stitch is made up of two diagonal stitches - a bottom stitch and a top stitch that together form an X.

Which **THREAD** do I use?

Our designs (and most others) use DMC™ six-stranded cotton. Each 8m skein comes in 6 strands, you will need 2 of these to work the X. Separate the thread into individual strands and then recombine them to prevent knotting. Use about 18" in length or 30" if you use the loop method of threading.

Which **FABRIC** do I use?

Most of our charts are for 16ct fabric but you can change them to any fabric/colour you prefer, just remember to alter the fabric size you start on accordingly as using 14 or 18ct aida will mean your finished design will become LARGER or SMALLER – **IMPORTANT** Add 6" to the DESIGN area to get a 3" border all the way around for framing purposes. i.e Design area 10" x 10" you will need a piece of fabric at least 16" x 16" to allow for framing.

How do I **HOLD** the fabric?

With regards to a frame, you could use a 'hold in hand' frame or a 'free-standing' frame or NO frame it really is up to you.

Which **NEEDLES** do I use?

Cross-stitching requires the use of 'blunt' needles instead of the sharp embroidery needles in some other types of embroidery. Use size 24 Tapestry Needles for 14/28ct Fabric and size 26 Tapestry Needles for 16/32ct Fabric.

Where is the **CENTRE** of my chart?

All our designs are printed over multiple pages. Patterns may differ with the size or shape (portrait or landscape sized designs) Don't worry if you see a smaller piece of grid on some pages, this is just the way the chart is printed. You will see when you lay out the pattern that the stitch count along the top & bottom matches the one given on the symbol key page.

1	2	3
4	5	6

1	2	3	4
5	6	7	8

The centre of your chart is marked by black arrows on all four sides (please feel free to make 1 working single-sided photocopy of your chart for your own use only and lay your pattern out on the table or floor for ease of viewing) Just follow the arrows across and down every page and mark the centre if preferred.

Where do I **START** stitching on the fabric?

Most stitchers start in the centre although you may find, as you get more experienced you may choose a different method. Find the centre of the fabric by folding it in half, then folding it in half the other way. Mark the centre with a pin, needle, a stitch, or some other method like a water-soluble pencil mark.

Starting the 'X'



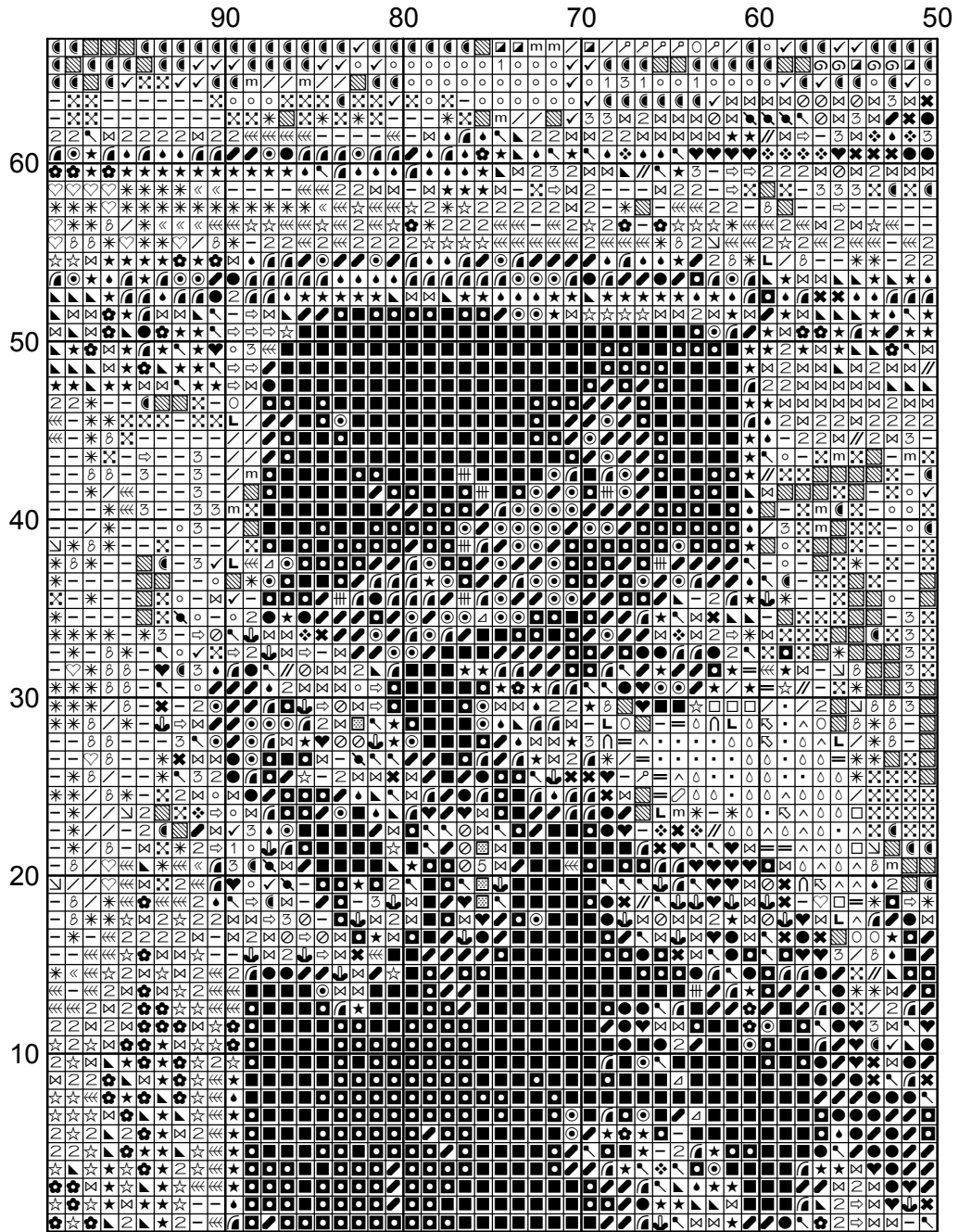
The Loop Method

For two strands, start with one strand twice as long as you need. Fold it in half. Thread the needle so the two ends are near the needle and the "loop" is the end farthest from the needle. Start the stitch with the loop end dangling a little bit below the cloth. When the needle comes back down to the underside, run it between the loop and the cloth, and gently pull the loop tight.

Stitching the 'X' Stitch the way you PREFER. Either in one block at a time, one colour at a time or all over. It doesn't matter as long as it all comes together at the end and you feel comfortable with your method. All the stitches should go in the same direction. It doesn't matter if the bottom half goes "/" and the top goes "\", or vice versa. Just try to make sure that *every* stitch in the project is done the same way.

Finishing the 'X' Run the thread under four or five of the stitches on the back. You may choose to whip stitch around the second or third stitch as you are running under, this helps to keep the thread in place.

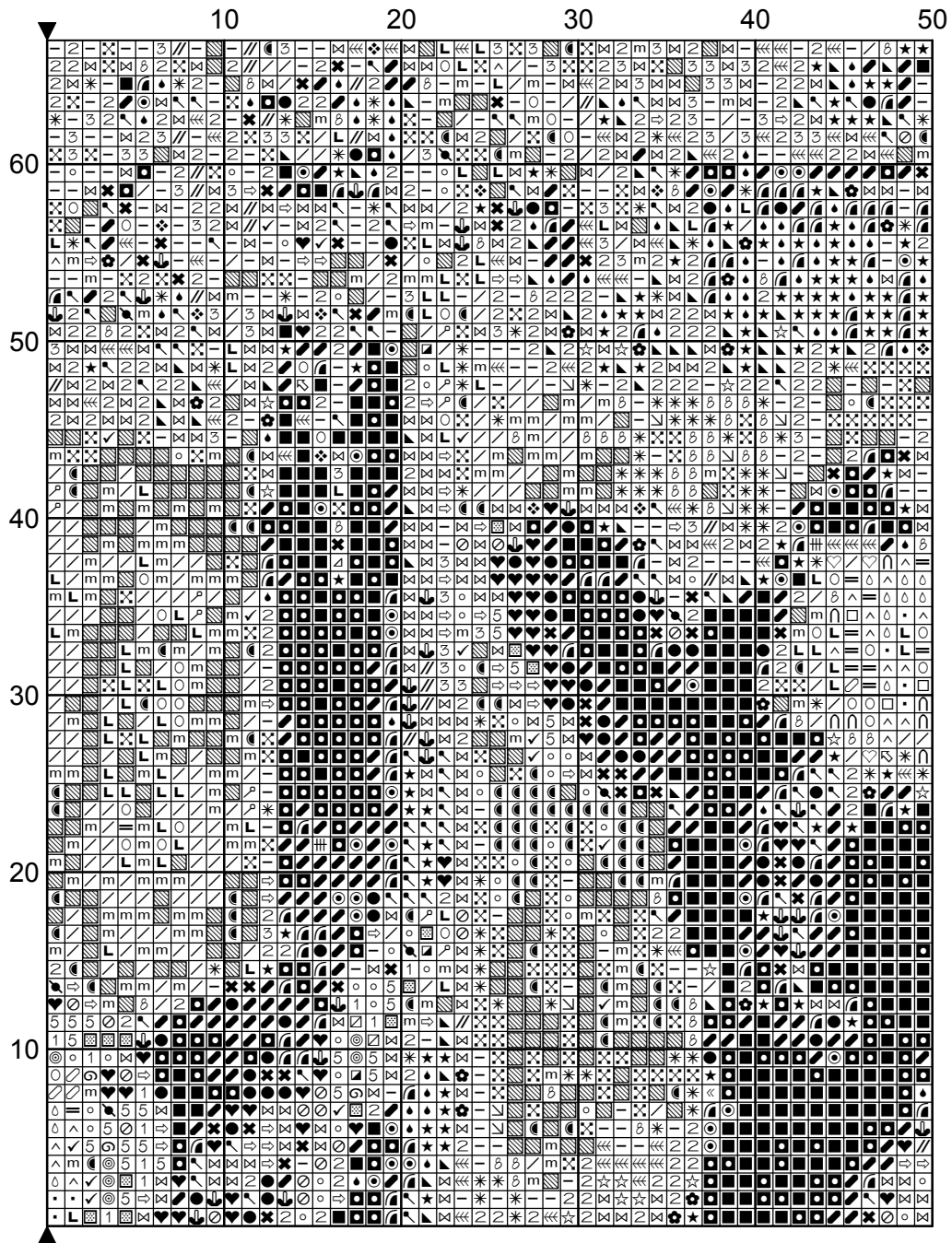
'Milking Time'

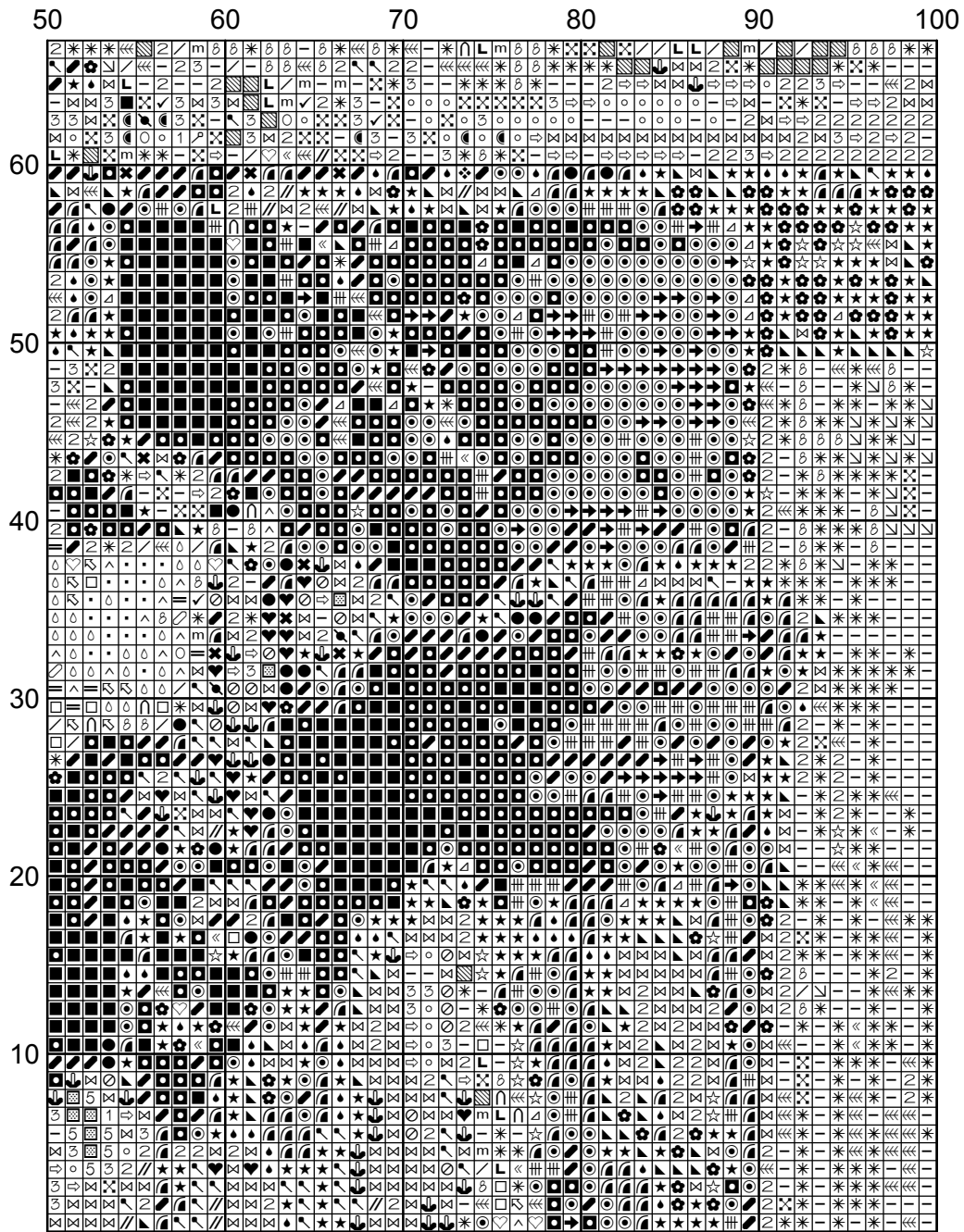


'Milking Time'

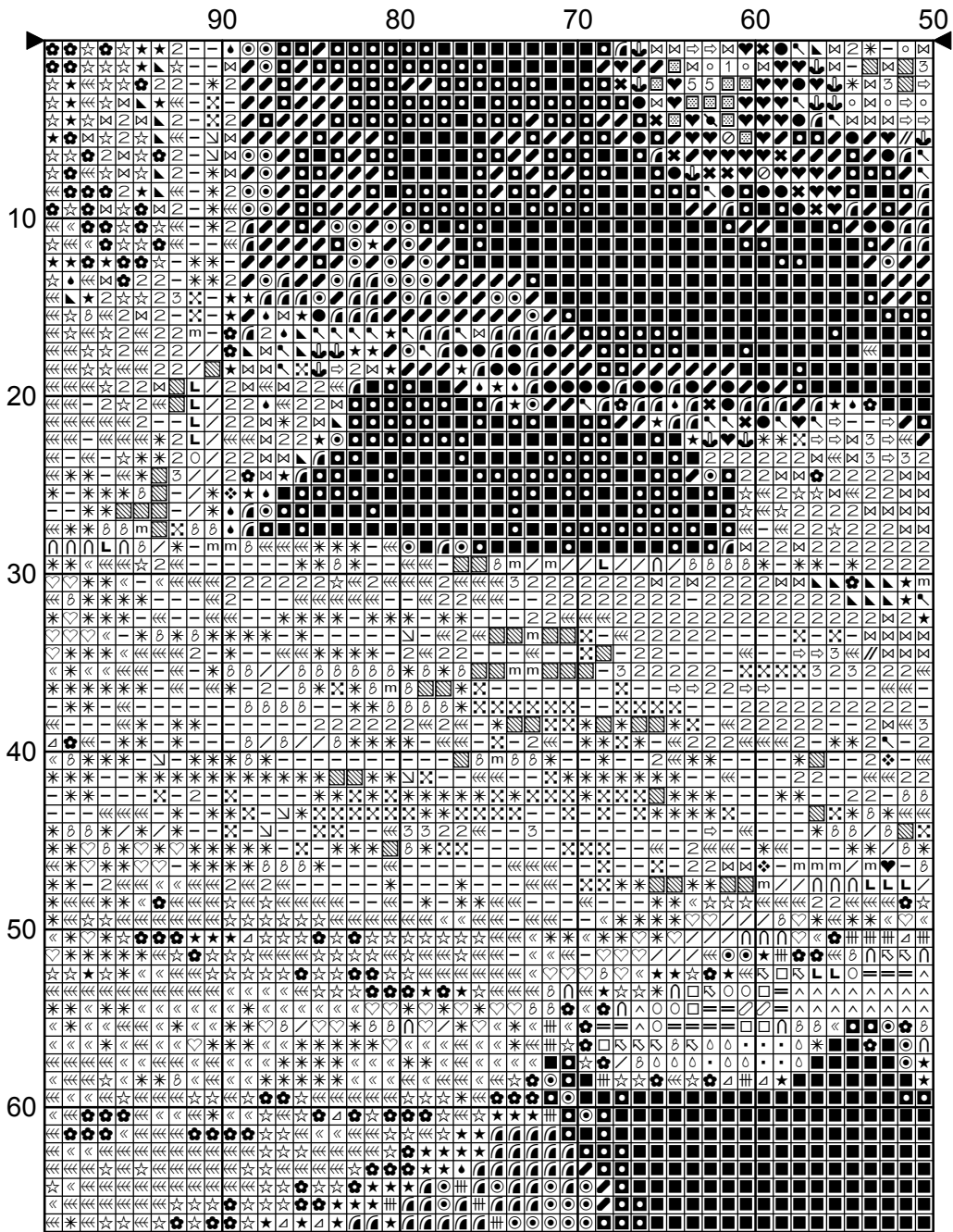


'Milking Time'

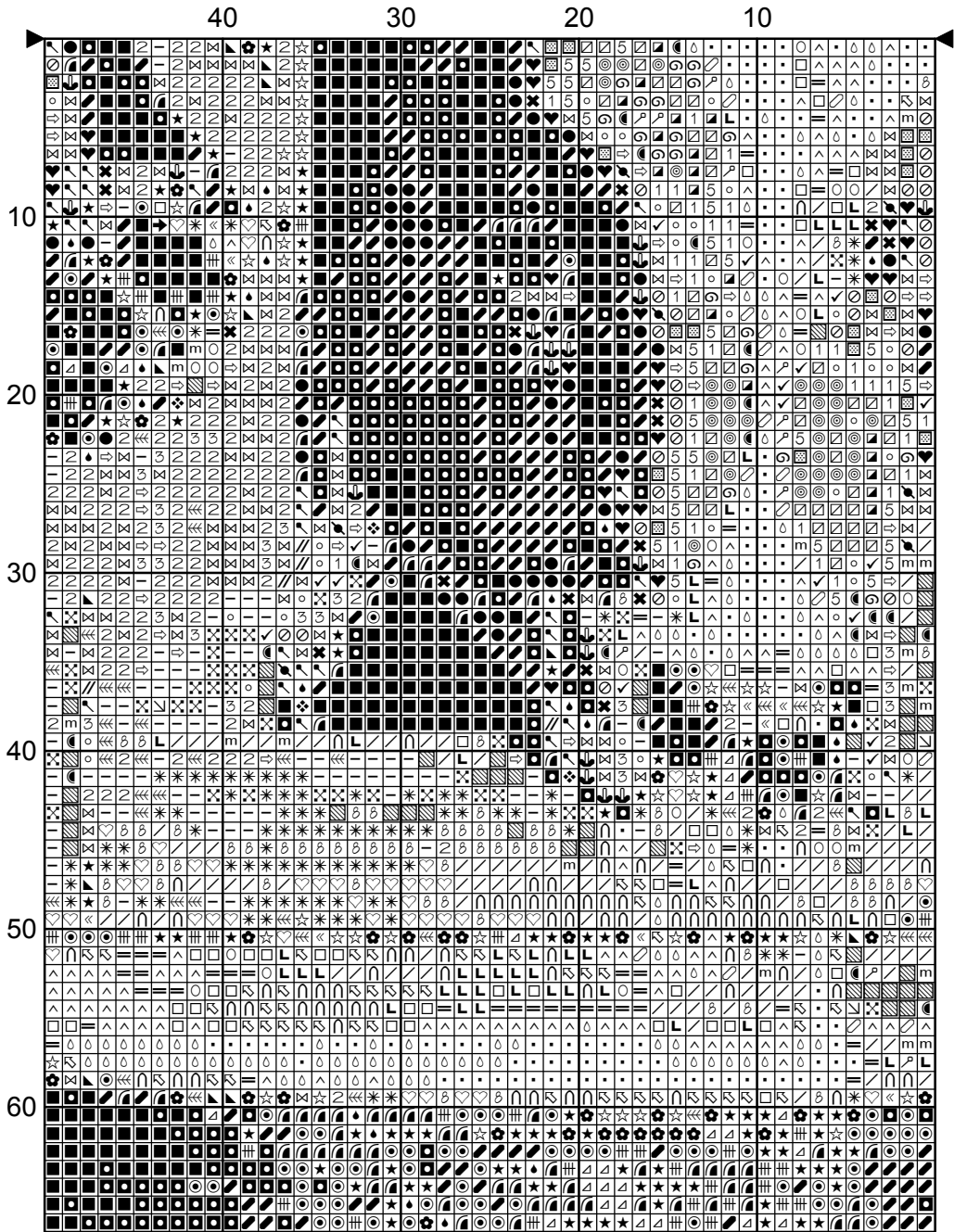




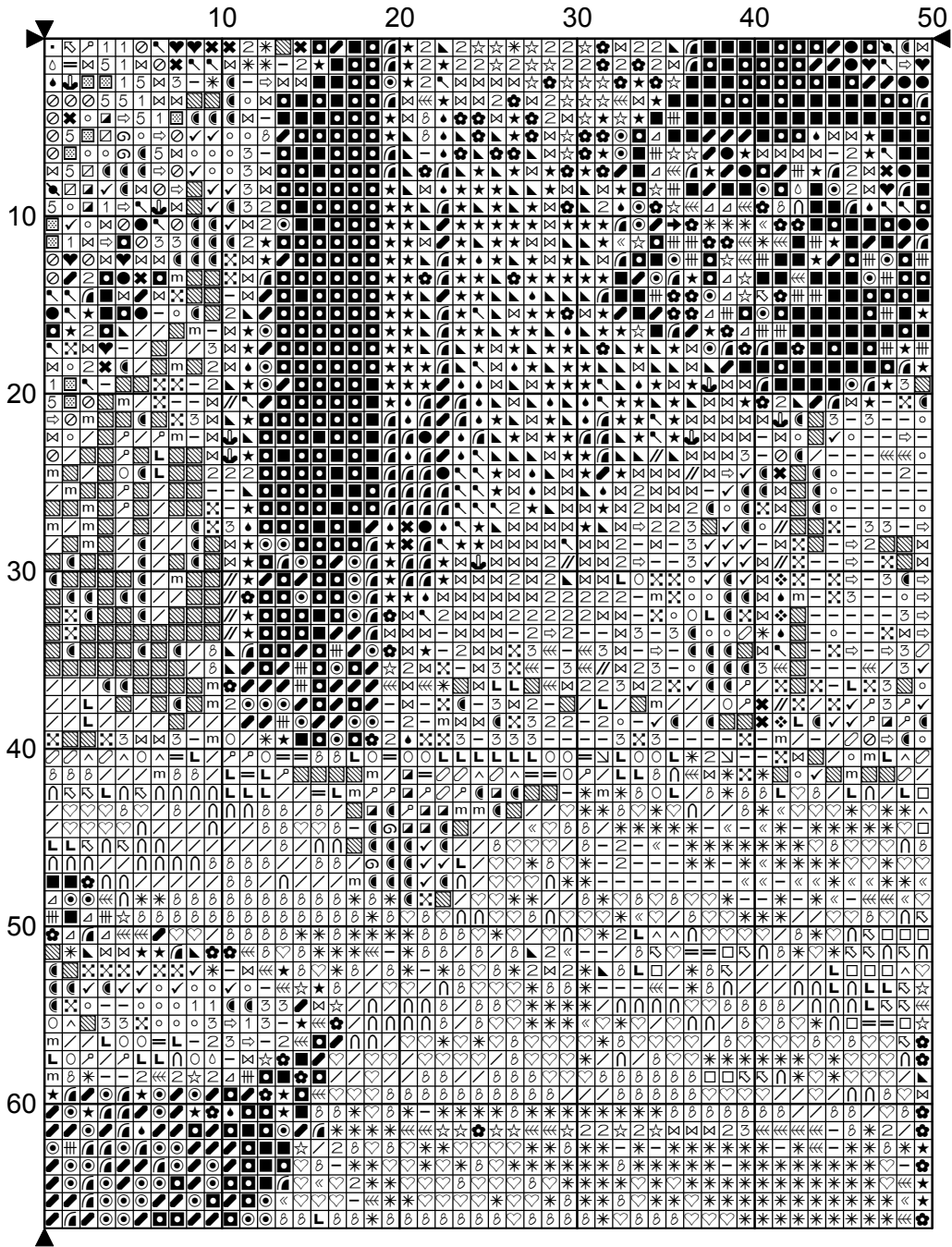
'Milking Time'

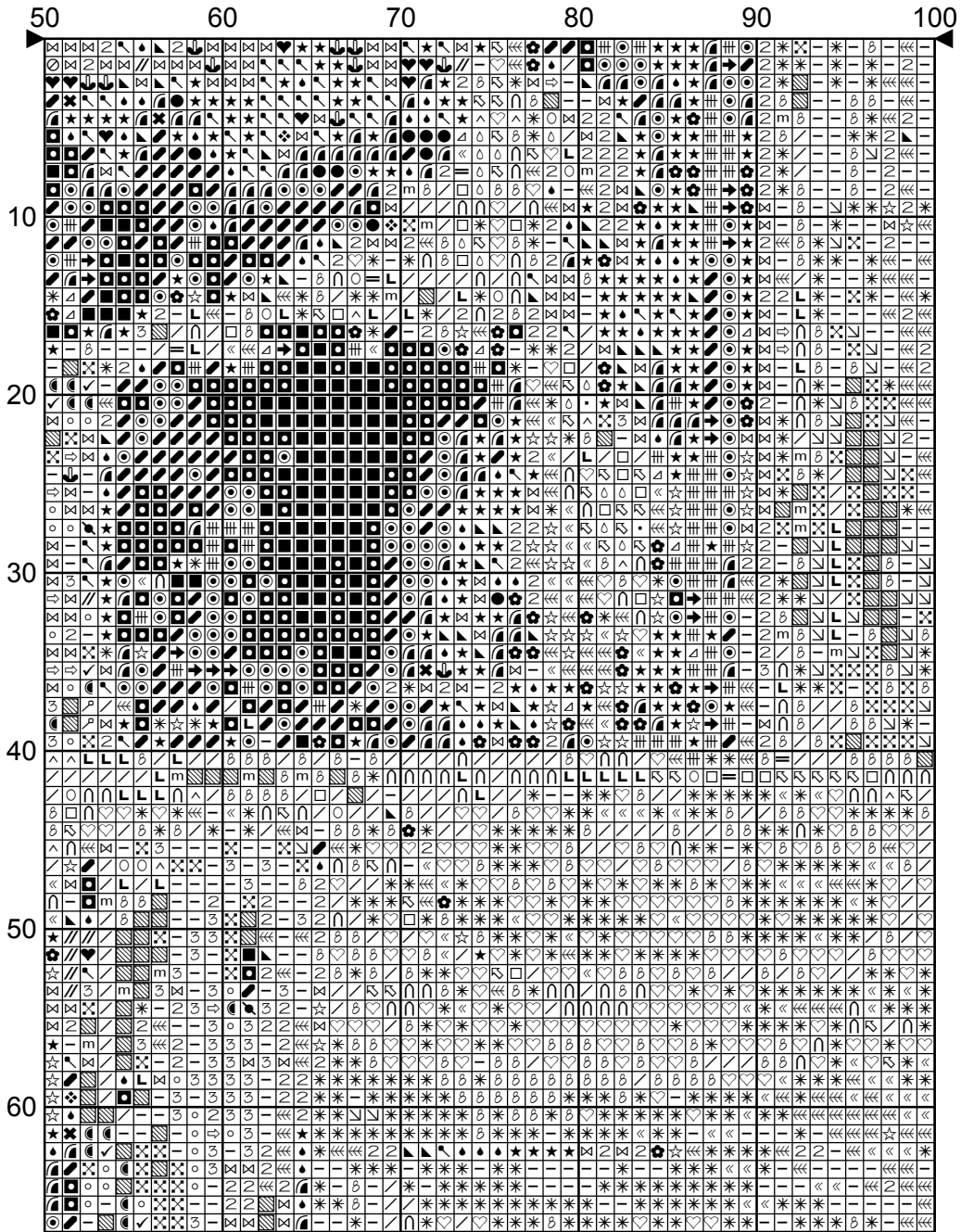


'Milking Time'



'Milking Time'





'Milking Time'

Chart for cross stitch © Celtic Rose Designs 2010

FREE from www.celticroseneedlecraft.com

This chart may be stitched for personal or non-profit use

Fabric: 16/32ct fabric in the colour of your choice as this design is fully stitched
See stitching instructions for further advice

Stitches: 200 x 134

Size: 12 1/2" wide x 8 1/2" high on 16/32ct fabric or 31.75 x 21.27 cm

Colours: DMC 1 x 8m skein of each colour listed below apart from:
310 Black (x2) 642 Earth Grey (x2) and 3371 Ebony (x2)

Symbol	No.	Colour Name	Symbol	No.	Colour Name
5	167	Dark mustard brown	■	310	Black
⇒	370	Medium mustard	✓	372	Light mustard
⊙	422	Light oak	8	524	Light grey green
△	535	Stone grey	☂	610	Dark golden brown
⊗	611	Sisal brown	○	612	String brown
☾	613	Rope brown	2	640	Green grey
—	642	Earth grey	/	644	Light green grey
✿	645	Dark steel grey	☆	646	Platinum grey
«	647	Rock grey	♡	648	Pepper grey
^	712	Cream	☉	738	Sahara cream
∪	746	Vanilla	♥	801	Mink brown
○	822	Cotton cream	☞	829	Dark green bronze
⊖	830	Green oak brown	☞	839	Root brown
m	842	Beige rope	≡	844	Pepper black
▣	869	Coffee brown	✕	898	Teak brown
⊙	934	Algae green	❖	936	Oaktree moss green
☞	938	Espresso brown	//	3011	Artichoke green
3	3012	Marsh green	☞	3021	Cliff grey
≡	3022	Elephant grey	*	3023	Light platinum grey
∩	3024	Pale steel grey	●	3031	Dark Mocha brown
⊗	3032	Dark antique silver	L	3033	Antique silver
1	3045	Coffee cream	▣	3046	Rye beige
♯	3047	Silver birch beige	∇	3053	Tweed green
☞	3072	Pale pearl grey	▣	3371	Ebony
◆	3781	Metal brown	▨	3782	Gingerbread brown
★	3787	Wolf grey	▲	3790	Cappuccino brown
➔	3799	Anthracite grey	▣	3828	Oaktree brown
◊	3865	Winter white	□	3866	Garlic cream
≡	Ecru	Ecru	•	Blanc	Blanc