



Size: Woman

Materials you will Need:

- 1/3 yard fleece, for mittens and lining (in the example I used different cloth in the lining)
- Thread
- Assembled printed pattern
- scissors
- .25 inch elastic, approx 8- 12 inches.

You can find the instructions [here](#).

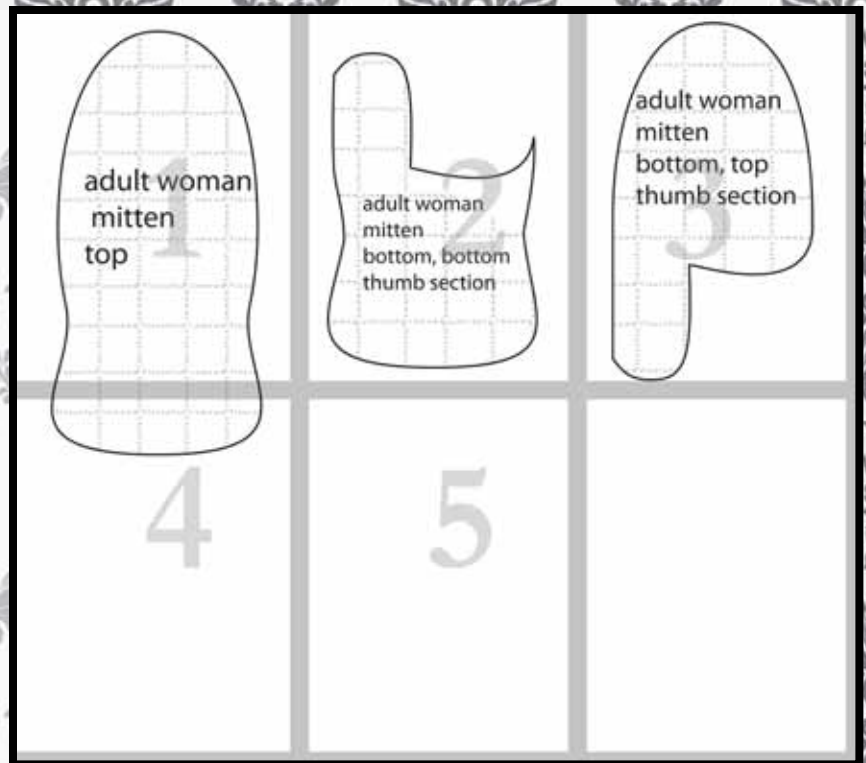
Your ad could be here contact angel@fleecefun.com for details



Map 4 pieces

Confused on how to assemble the pattern?
No worries!

Just [click here](#) for an easy step by step video to show you how to assemble the pattern.



You might also like
(Click envelope to go to):

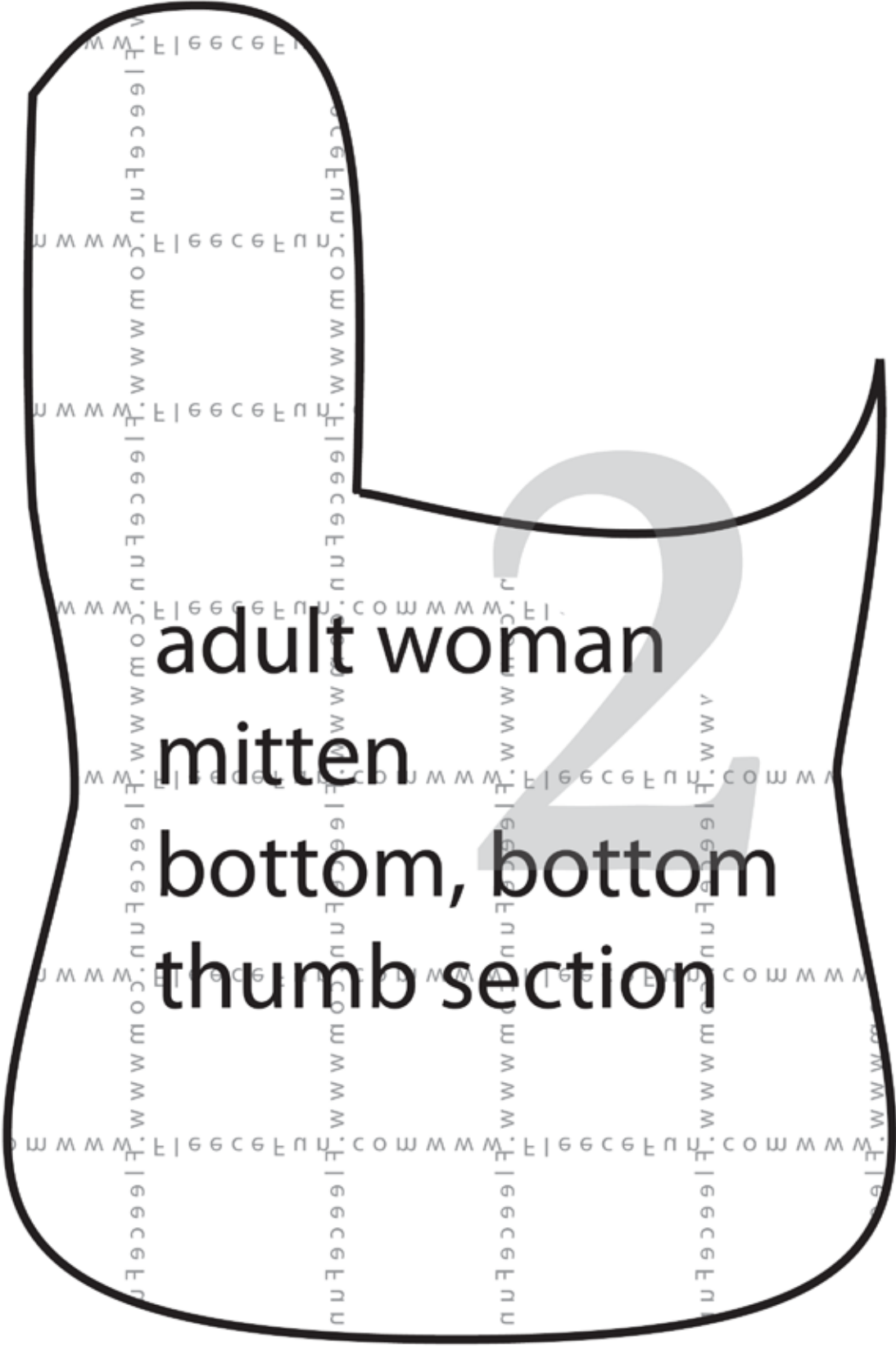




**adult woman
mitten
top**



The image features a large, black-outlined mitten shape that acts as a frame. Inside this frame, the text "adult woman", "mitten", and "top" is displayed in a bold, black, sans-serif font, stacked vertically. Behind the text, there is a faint, light gray silhouette of a woman's torso and arms, suggesting the intended user of the mitten. The background within the mitten frame is filled with a repeating pattern of the text "www.FleeceFun.com" in a small, light gray font, oriented vertically. The entire design is set against a white background, with a solid gray vertical bar on the right side and a solid gray horizontal bar at the bottom.



adult woman

mitten

bottom, bottom

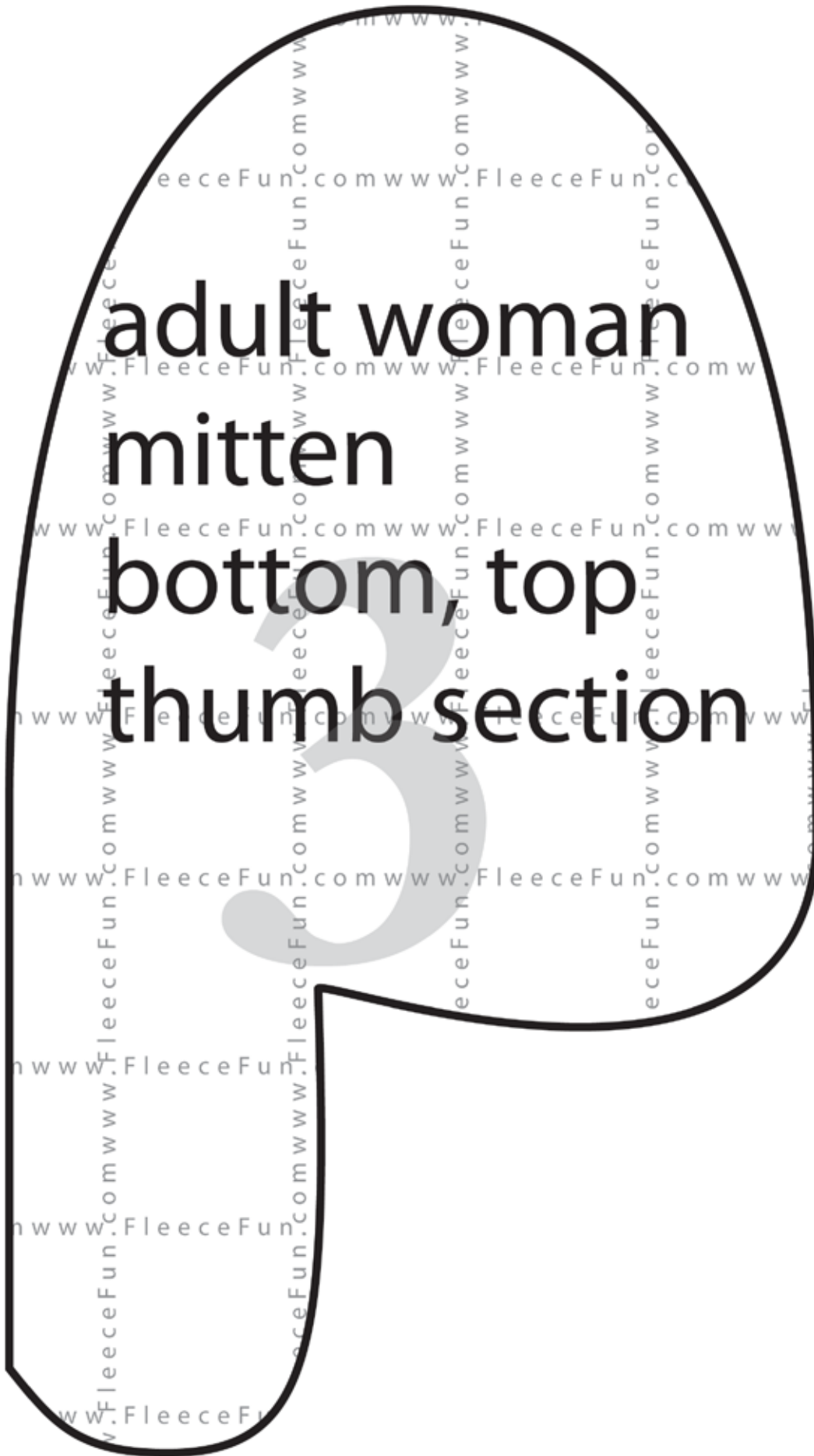
thumb section

adult woman

mitten

bottom, top

thumb section



FleeceFun.com www.FleeceFun.com www.Fleece

4