



www.goldenkite.com

816 Detail from Sunshine



This pattern may not be copied, sold or in any other way handled in any way that violates the international copyright laws. If you get hold of this pattern (and or this document) in any other way than via a direct download from www.goldenkite.com or via a mail from us, you should report that to us at legal_actions@goldenkite.com .

Copyright (c) 2005-, Golden Kite. All rights reserved.

Copyright (c) 2005-, Golden Kite (Golden K.)
Internet: www.goldenkite.com

e-mail: info@goldenkite.com

Instructions

Thank you for choosing Golden Kite products!
We hope you will have lots of fun with this cross-stitch pattern!

Fabric

Press the fabric with an iron if needed. A good thing to prevent the fabric from fraying is to machine zigzag the edges.

On large patterns, it is easiest to start from the upper left corner of the design. Make sure you have the proper margins before starting and that the fabric piece is of the correct size. The best way to verify this is to count all stitch positions on the fabric from the upper left corner downwards and to the right to make sure there is enough space for the design.

Some prefer to start in the center of the design instead. To locate the center of the fabric, fold the fabric in half both vertically and horizontally. The center is located where these two folds meet.

Stitches

Each length of DMC tread consists of six strands.
Use two of these strands for all stitches.

Note that some colors may be mixes (or blends) between two different pure colors. In that case take one strand of the two colors each and thread the two strands into the needle at the same time for stitching.

All stitches are full cross-stitches. No half-stitching and no back-stitching is necessary in this pattern.

All cross-stitches will be worked into the holes in the fabric from left to right. Always use the larger holes in the fabric for the stitches. Adjacent stitches should meet in the same hole. Make sure all stitches cross in the same direction.

Please be careful when washing the finished embroidery! The cotton thread may bleed when washed. Only hand wash it in lukewarm water. Remove excess water by roll it in a towel and lay it flat to air dry. Natural fabrics may shrink slightly when washed. We do not recommend washing the embroidery if not absolutely necessary and we take no responsibility for any damage that may occur.

When you start using this product you agree that Golden Kite (Golden K), or any people working for or in association with Golden Kite (Golden K), cannot be set responsible for any physical, mental, economical or other type of damage caused by this product (including this document, pattern, threads, needles and any other parts received by you from Golden Kite (Golden K)).

This pattern may not be copied, sold or in any other way handled in any way that violates the international copyright laws. If you get hold of this pattern (and or this document) in any other way than via a direct download from www.goldenkite.com or via a mail from us, you should report that to us at legal_actions@goldenkite.com .

Detail from Sunshine

Stitch Count	
Horizontal:	300
Vertical:	564

Recommended Fabric Color
Antique White

This table tells the size of the pattern (without any margins) and the size of the fabric required to stitch the pattern (including recommended margins). 3 inch margins have been added on each side in the 'Including Margins' row.

The sizes are given for 14, 16 and 18 stitches per inch fabrics.

Make sure to use the 'Including Margins' row when cutting the piece of fabric to be used. Also make sure that 3 inch margins are enough for your stitching technique and add more margin areas if necessary.

	14				16				18			
	Width		Height		Width		Height		Width		Height	
	cm	inch	cm	inch	cm	inch	cm	inch	cm	inch	cm	inch
Pattern:	55	21.37	103	40.17	48	18.7	90	35.15	43	16.625	80	31.25
Including Margins:	71	28	119	47	64	25	106	42	59	23	96	38
	10				12				24			
	Width		Height		Width		Height		Width		Height	
	cm	inch	cm	inch	cm	inch	cm	inch	cm	inch	cm	inch
Pattern:	77	29.91	144	56.23	64	24.93	120	46.86	32	12.46	60	23.43
Including Margins:	93	36	160	63	80	31	136	53	48	19	76	30
	25				26				27			
	Width		Height		Width		Height		Width		Height	
	cm	inch	cm	inch	cm	inch	cm	inch	cm	inch	cm	inch
Pattern:	30	11.96	57	22.49	29	11.5	55	21.63	28	11.08	53	20.82
Including Margins:	46	18	73	29	45	18	71	28	44	18	69	27
	28				30				32			
	Width		Height		Width		Height		Width		Height	
	cm	inch	cm	inch	cm	inch	cm	inch	cm	inch	cm	inch
Pattern:	27	10.68	51	20.08	25	9.97	48	18.74	24	9.34	45	17.57
Including Margins:	43	17	67	27	41	16	64	25	40	16	61	24

Solid Color Stitches. Use two strands of the specified color for these stitches.		
Symbol	DMC	Name
♣	317	Pewter Gray
☐	371	Mustard
✍	407	Desert Sand-DK
▨	413	Pewter Gray-DK
m	415	Pearl Gray
↑	422	Hazelnut Brown-LT
⇒	436	Tan
☾	451	Shell Gray-DK
∇	452	Shell Gray-MD
5	453	Shell Gray-LT
≡	632	Desert Sand-UL VY DK
—	677	Old Gold-VY LT
1	712	Cream
♢	722	Orange Spice-LT
=	739	Tan-UL VY LT
∞	743	Yellow-MD
c	762	Pearl Gray-VY LT
L	819	Baby Pink-LT
>	822	Beige Gray-LT
●	838	Beige Brown-VY DK
◉	839	Beige Brown-DK

9	842	Beige Brown-VY LT
♥	844	Beaver Brown-UL DK
u	948	Peach-VY LT
8	950	Desert Sand-LT
z	977	Golden Brown-LT
↖	3041	Antique Violet-MD
¼	3042	Antique Violet-LT
★	3064	Desert Sand
∩	3756	Baby Blue-UL VY LT
(3770	Tawny-VY LT
△	3772	Desert Sand-VY DK
√	3774	Desert Sand-VY LT
▧	3787	Brown Gray-DK
③	3799	Pewter Gray-VY DK
↑	3827	Golden Brown-Pale
✕	3853	Autumn Gold-DK
::	3855	Autumn Gold-LT
· ·	3856	Mahogany-UL VY LT
☛	3858	Rosewood-MD
≡	3859	Rosewood-LT
⊕	3861	Cocoa-LT
✚	3863	Mocha Beige-MD
✚	3864	Mocha Beige-LT
«	3865	Winter White

Blend Stitches. Use one strand of each of DMC1 and DMC2 for these stitches.

Symbol	DMC1	Name1	DMC2	Name2
⌘	414	Steel Gray-DK	927	Gray Green-LT
⌘	844	Beaver Brown-UL DK	3799	Pewter Gray-VY DK
⌘	640	Beige Gray-VY DK	3787	Brown Gray-DK
⌘	356	Terra Cotta-MD	3828	Hazelnut Brown
⌘	415	Pearl Gray	453	Shell Gray-LT
⌘	3772	Desert Sand-VY DK	3828	Hazelnut Brown
⌘	452	Shell Gray-MD	3861	Cocoa-LT
⌘	3772	Desert Sand-VY DK	356	Terra Cotta-MD
⌘	451	Shell Gray-DK	3787	Brown Gray-DK
⌘	3830	Terra Cotta-MD	632	Desert Sand-UL VY DK
⌘	838	Beige Brown-VY DK	839	Beige Brown-DK
⌘	3859	Rosewood-LT	3863	Mocha Beige-MD
⌘	356	Terra Cotta-MD	436	Tan
⌘	3828	Hazelnut Brown	3064	Desert Sand
⌘	632	Desert Sand-UL VY DK	3772	Desert Sand-VY DK
⌘	310	Black	3021	Brown Gray-VY DK
⌘	415	Pearl Gray	452	Shell Gray-MD
⌘	632	Desert Sand-UL VY DK	640	Beige Gray-VY DK
⌘	3863	Mocha Beige-MD	3772	Desert Sand-VY DK
⌘	3861	Cocoa-LT	451	Shell Gray-DK
⌘	842	Beige Brown-VY LT	3864	Mocha Beige-LT
⌘	3861	Cocoa-LT	407	Desert Sand-DK
⌘	3864	Mocha Beige-LT	407	Desert Sand-DK
⌘	452	Shell Gray-MD	842	Beige Brown-VY LT
⌘	640	Beige Gray-VY DK	451	Shell Gray-DK
⌘	451	Shell Gray-DK	632	Desert Sand-UL VY DK
⌘	3799	Pewter Gray-VY DK	310	Black
⌘	645	Beaver Gray-VY DK	413	Pewter Gray-DK
⌘	3756	Baby Blue-UL VY LT	3865	Winter White
⌘	3042	Antique Violet-LT	414	Steel Gray-DK
⌘	413	Pewter Gray-DK	451	Shell Gray-DK
⌘	839	Beige Brown-DK	3787	Brown Gray-DK
⌘	3031	Mocha Brown-VY DK	844	Beaver Brown-UL DK
⌘	950	Desert Sand-LT	3864	Mocha Beige-LT
⌘	414	Steel Gray-DK	3787	Brown Gray-DK
⌘	451	Shell Gray-DK	844	Beaver Brown-UL DK
⌘	3787	Brown Gray-DK	3858	Rosewood-MD
⌘	839	Beige Brown-DK	632	Desert Sand-UL VY DK
⌘	3772	Desert Sand-VY DK	3830	Terra Cotta-MD
⌘	822	Beige Gray-LT	452	Shell Gray-MD
⌘	3862	Mocha Beige-DK	3787	Brown Gray-DK
⌘	452	Shell Gray-MD	948	Peach-VY LT
⌘	677	Old Gold-VY LT	754	Peach-LT
⌘	632	Desert Sand-UL VY DK	370	Mustard-MD
⌘	977	Golden Brown-LT	3821	Straw
⌘	712	Cream	762	Pearl Gray-VY LT
⌘	3861	Cocoa-LT	647	Beaver Gray-MD
⌘	451	Shell Gray-DK	647	Beaver Gray-MD
⌘	3859	Rosewood-LT	3364	Pine Green
⌘	370	Mustard-MD	407	Desert Sand-DK
⌘	3859	Rosewood-LT	451	Shell Gray-DK
⌘	452	Shell Gray-MD	543	Beige Brown-UL VY LT
⌘	842	Beige Brown-VY LT	739	Tan-UL VY LT

Copyright (c) 2005-, Golden Kite (Golden K.)

Internet: www.goldenkite.com

e-mail: info@goldenkite.com

2	842	Beige Brown-VY LT	3856	Mahogany-UL VY LT
↘	422	Hazelnut Brown-LT	3012	Khaki Green-MD
↑	3862	Mocha Beige-DK	632	Desert Sand-UL VY DK
↓	370	Mustard-MD	3830	Terra Cotta-MD
+	839	Beige Brown-DK	371	Mustard
⊕	977	Golden Brown-LT	3853	Autumn Gold-DK
⊗	3864	Mocha Beige-LT	3364	Pine Green
⊙	927	Gray Green-LT	3041	Antique Violet-MD
⊛	437	Tan-LT	3064	Desert Sand
☆	3064	Desert Sand	422	Hazelnut Brown-LT
//	3064	Desert Sand	758	Terra Cotta-VY LT
e	3756	Baby Blue-UL VY LT	453	Shell Gray-LT
*	3828	Hazelnut Brown	436	Tan
○	3856	Mahogany-UL VY LT	738	Tan-VY LT
≡	738	Tan-VY LT	758	Terra Cotta-VY LT
⇐	436	Tan	3859	Rosewood-LT
•	3865	Winter White	1	White 1
♂	778	Antique Mauve-VY LT	762	Pearl Gray-VY LT
+	778	Antique Mauve-VY LT	3756	Baby Blue-UL VY LT
✓	415	Pearl Gray	3072	Beaver Gray-VY LT
✕	3364	Pine Green	451	Shell Gray-DK
)	712	Cream	822	Beige Gray-LT
♠	3064	Desert Sand	3772	Desert Sand-VY DK
*	356	Terra Cotta-MD	3859	Rosewood-LT
+	371	Mustard	3863	Mocha Beige-MD
▼	3787	Brown Gray-DK	371	Mustard
⊖	407	Desert Sand-DK	3863	Mocha Beige-MD
L	722	Orange Spice-LT	3064	Desert Sand
◇	738	Tan-VY LT	407	Desert Sand-DK
3	3854	Autumn Gold-MD	743	Yellow-MD
◇	3830	Terra Cotta-MD	977	Golden Brown-LT
III	436	Tan	977	Golden Brown-LT
∩	3853	Autumn Gold-DK	3821	Straw
*	356	Terra Cotta-MD	3830	Terra Cotta-MD

This table specifies how much thread of each color is required to stitch this pattern. It is good to know that one complete DMC skein contains 313 inches (795 cm) thread.

DMC	Name	Usage (cm)	Usage (inch)	Usage (cm)	Usage (inch)	Usage (cm)	Usage (inch)
		14		16		18	
1	White 1	525	206	500	196	450	177
310	Black	359	141	342	134	308	121
317	Pewter Gray	75	29	72	28	64	25
356	Terra Cotta-MD	863	339	822	323	740	291
370	Mustard-MD	597	235	568	223	511	201
371	Mustard	382	150	364	143	328	129
407	Desert Sand-DK	965	379	919	361	827	325
413	Pewter Gray-DK	593	233	565	222	508	200
414	Steel Gray-DK	256	100	244	96	220	86
415	Pearl Gray	1046	411	996	392	896	352
422	Hazelnut Brown-LT	367	144	350	137	315	124
436	Tan	666	262	635	250	571	224
437	Tan-LT	147	57	140	55	126	49
451	Shell Gray-DK	1908	751	1817	715	1636	644
452	Shell Gray-MD	2866	1128	2729	1074	2456	966
453	Shell Gray-LT	964	379	918	361	827	325
543	Beige Brown-UL VY LT	208	81	198	77	178	70
632	Desert Sand-UL VY DK	1823	717	1737	683	1563	615
640	Beige Gray-VY DK	664	261	632	248	569	224
645	Beaver Gray-VY DK	252	99	240	94	216	85
647	Beaver Gray-MD	270	106	257	101	232	91
677	Old Gold-VY LT	370	145	352	138	317	124
712	Cream	671	264	639	251	575	226
722	Orange Spice-LT	30	11	28	11	26	10
738	Tan-VY LT	235	92	223	87	201	79
739	Tan-UL VY LT	351	138	335	131	301	118
743	Yellow-MD	20	7	19	7	17	6
754	Peach-LT	57	22	54	21	48	18
758	Terra Cotta-VY LT	121	47	115	45	104	40
762	Pearl Gray-VY LT	823	324	784	308	706	277
778	Antique Mauve-VY LT	513	201	488	192	439	172
819	Baby Pink-LT	526	207	501	197	451	177
822	Beige Gray-LT	801	315	763	300	686	270
838	Beige Brown-VY DK	431	169	410	161	369	145
839	Beige Brown-DK	2119	834	2018	794	1816	714
842	Beige Brown-VY LT	1509	594	1437	565	1293	509
844	Beaver Brown-UL DK	2195	864	2091	823	1882	740
927	Gray Green-LT	154	60	147	57	132	51
948	Peach-VY LT	677	266	645	253	580	228
950	Desert Sand-LT	504	198	480	188	432	170
977	Golden Brown-LT	70	27	67	26	60	23
3012	Khaki Green-MD	49	19	46	18	42	16
3021	Brown Gray-VY DK	246	96	235	92	211	83
3031	Mocha Brown-VY DK	493	194	469	184	422	166
3041	Antique Violet-MD	341	134	325	127	292	114
3042	Antique Violet-LT	603	237	574	225	516	203
3064	Desert Sand	1158	455	1103	434	993	390
3072	Beaver Gray-VY LT	164	64	156	61	140	55
3364	Pine Green	293	115	279	109	251	98
3756	Baby Blue-UL VY LT	1185	466	1128	444	1015	399
3770	Tawny-VY LT	364	143	347	136	312	122
3772	Desert Sand-VY DK	1915	753	1824	718	1641	646
3774	Desert Sand-VY LT	595	234	566	222	510	200
3787	Brown Gray-DK	2039	802	1941	764	1747	687

Copyright (c) 2005-, Golden Kite (Golden K.)

Internet: www.goldenkite.com

e-mail: info@goldenkite.com

3799	Pewter Gray-VY DK	731	287	696	274	627	246
3821	Straw	23	9	22	8	20	7
3827	Golden Brown-Pale	60	23	57	22	51	20
3828	Hazelnut Brown	859	338	818	322	736	289
3830	Terra Cotta-MD	221	87	210	82	189	74
3853	Autumn Gold-DK	20	7	19	7	17	6
3854	Autumn Gold-MD	9	3	9	3	8	3
3855	Autumn Gold-LT	69	27	65	25	59	23
3856	Mahogany-UL VY LT	239	94	228	89	205	80
3858	Rosewood-MD	504	198	480	188	432	170
3859	Rosewood-LT	1032	406	983	387	885	348
3861	Cocoa-LT	1112	437	1059	416	953	375
3862	Mocha Beige-DK	455	179	433	170	390	153
3863	Mocha Beige-MD	1091	429	1039	409	935	368
3864	Mocha Beige-LT	1516	596	1444	568	1299	511
3865	Winter White	2357	927	2245	883	2020	795

Extended thread usage table.							
DMC	Name	Usage (cm)	Usage (inch)	Usage (cm)	Usage (inch)	Usage (cm)	Usage (inch)
		10		12		24	
1	White 1	810	319	675	266	338	133
310	Black	554	218	462	182	231	91
317	Pewter Gray	115	45	96	38	48	19
356	Terra Cotta-MD	1332	524	1110	437	555	218
370	Mustard-MD	920	362	767	302	383	151
371	Mustard	590	232	492	194	246	97
407	Desert Sand-DK	1489	585	1241	488	620	244
413	Pewter Gray-DK	914	360	762	300	381	150
414	Steel Gray-DK	396	155	330	129	165	65
415	Pearl Gray	1613	634	1344	528	672	264
422	Hazelnut Brown-LT	567	223	473	186	236	93
436	Tan	1028	403	857	336	428	168
437	Tan-LT	227	88	189	74	95	37
451	Shell Gray-DK	2945	1159	2454	966	1227	483
452	Shell Gray-MD	4421	1739	3684	1449	1842	725
453	Shell Gray-LT	1489	585	1241	488	620	244
543	Beige Brown-UL VY LT	320	126	267	105	134	53
632	Desert Sand-UL VY DK	2813	1107	2345	923	1172	461
640	Beige Gray-VY DK	1024	403	854	336	427	168
645	Beaver Gray-VY DK	389	153	324	128	162	64
647	Beaver Gray-MD	418	164	348	137	174	68
677	Old Gold-VY LT	571	223	476	186	238	93
712	Cream	1035	407	863	339	431	170
722	Orange Spice-LT	47	18	39	15	20	8
738	Tan-VY LT	362	142	302	119	151	59
739	Tan-UL VY LT	542	212	452	177	226	89
743	Yellow-MD	31	11	26	9	13	5
754	Peach-LT	86	32	72	27	36	14
758	Terra Cotta-VY LT	187	72	156	60	78	30
762	Pearl Gray-VY LT	1271	499	1059	416	530	208
778	Antique Mauve-VY LT	790	310	659	258	329	129
819	Baby Pink-LT	812	319	677	266	338	133
822	Beige Gray-LT	1235	486	1029	405	515	203
838	Beige Brown-VY DK	664	261	554	218	277	109
839	Beige Brown-DK	3269	1285	2724	1071	1362	536
842	Beige Brown-VY LT	2327	916	1940	764	970	382

844	Beaver Brown-UL DK	3388	1332	2823	1110	1412	555
927	Gray Green-LT	238	92	198	77	99	38
948	Peach-VY LT	1044	410	870	342	435	171
950	Desert Sand-LT	778	306	648	255	324	128
977	Golden Brown-LT	108	41	90	35	45	17
3012	Khaki Green-MD	76	29	63	24	32	12
3021	Brown Gray-VY DK	380	149	317	125	158	62
3031	Mocha Brown-VY DK	760	299	633	249	317	125
3041	Antique Violet-MD	526	205	438	171	219	86
3042	Antique Violet-LT	929	365	774	305	387	152
3064	Desert Sand	1787	702	1490	585	745	293
3072	Beaver Gray-VY LT	252	99	210	83	105	41
3364	Pine Green	452	176	377	147	188	74
3756	Baby Blue-UL VY LT	1827	718	1523	599	761	299
3770	Tawny-VY LT	562	220	468	183	234	92
3772	Desert Sand-VY DK	2954	1163	2462	969	1231	485
3774	Desert Sand-VY LT	918	360	765	300	383	150
3787	Brown Gray-DK	3145	1237	2621	1031	1310	515
3799	Pewter Gray-VY DK	1129	443	941	369	470	185
3821	Straw	36	13	30	11	15	5
3827	Golden Brown-Pale	92	36	77	30	38	15
3828	Hazelnut Brown	1325	520	1104	434	552	217
3830	Terra Cotta-MD	340	133	284	111	142	56
3853	Autumn Gold-DK	31	11	26	9	13	5
3854	Autumn Gold-MD	14	5	12	5	6	2
3855	Autumn Gold-LT	106	41	89	35	44	17
3856	Mahogany-UL VY LT	369	144	308	120	154	60
3858	Rosewood-MD	778	306	648	255	324	128
3859	Rosewood-LT	1593	626	1328	522	664	261
3861	Cocoa-LT	1715	675	1430	563	715	281
3862	Mocha Beige-DK	702	275	585	230	293	115
3863	Mocha Beige-MD	1683	662	1403	552	701	276
3864	Mocha Beige-LT	2338	920	1949	767	974	383
3865	Winter White	3636	1431	3030	1193	1515	596

Extended thread usage table.							
DMC	Name	Usage (cm)	Usage (inch)	Usage (cm)	Usage (inch)	Usage (cm)	Usage (inch)
		25		26		27	
1	White 1	324	127	312	123	300	118
310	Black	222	87	213	84	205	81
317	Pewter Gray	46	18	44	17	43	17
356	Terra Cotta-MD	533	210	512	201	493	194
370	Mustard-MD	368	145	354	139	341	134
371	Mustard	236	93	227	89	219	86
407	Desert Sand-DK	595	234	573	225	551	217
413	Pewter Gray-DK	366	144	352	138	339	133
414	Steel Gray-DK	158	62	152	60	147	57
415	Pearl Gray	645	253	620	244	597	235
422	Hazelnut Brown-LT	227	89	218	86	210	83
436	Tan	411	161	395	155	381	149
437	Tan-LT	91	35	87	34	84	33
451	Shell Gray-DK	1178	464	1133	446	1091	429
452	Shell Gray-MD	1768	696	1700	669	1637	644
453	Shell Gray-LT	595	234	573	225	551	217
543	Beige Brown-UL VY LT	128	50	123	48	119	47
632	Desert Sand-UL VY DK	1125	443	1082	426	1042	410

640	Beige Gray-VY DK	410	161	394	155	379	149
645	Beaver Gray-VY DK	156	61	150	59	144	57
647	Beaver Gray-MD	167	66	161	63	155	61
677	Old Gold-VY LT	228	89	219	86	211	83
712	Cream	414	163	398	156	383	151
722	Orange Spice-LT	19	7	18	7	17	7
738	Tan-VY LT	145	57	139	55	134	53
739	Tan-UL VY LT	217	85	208	82	201	79
743	Yellow-MD	12	4	12	4	11	4
754	Peach-LT	35	13	33	12	32	12
758	Terra Cotta-VY LT	75	29	72	28	69	27
762	Pearl Gray-VY LT	508	199	489	192	471	185
778	Antique Mauve-VY LT	316	124	304	119	293	115
819	Baby Pink-LT	325	127	312	123	301	118
822	Beige Gray-LT	494	194	475	187	457	180
838	Beige Brown-VY DK	266	104	255	100	246	97
839	Beige Brown-DK	1308	514	1257	494	1211	476
842	Beige Brown-VY LT	931	366	895	352	862	339
844	Beaver Brown-UL DK	1355	533	1303	512	1255	493
927	Gray Green-LT	95	37	91	35	88	34
948	Peach-VY LT	418	164	402	158	387	152
950	Desert Sand-LT	311	122	299	118	288	113
977	Golden Brown-LT	43	17	42	16	40	15
3012	Khaki Green-MD	30	12	29	11	28	11
3021	Brown Gray-VY DK	152	60	146	57	141	55
3031	Mocha Brown-VY DK	304	120	292	115	281	111
3041	Antique Violet-MD	210	82	202	79	195	76
3042	Antique Violet-LT	372	146	357	141	344	135
3064	Desert Sand	715	281	687	270	662	260
3072	Beaver Gray-VY LT	101	40	97	38	93	37
3364	Pine Green	181	71	174	68	167	65
3756	Baby Blue-UL VY LT	731	287	703	276	677	266
3770	Tawny-VY LT	225	88	216	84	208	81
3772	Desert Sand-VY DK	1182	465	1136	447	1094	431
3774	Desert Sand-VY LT	367	144	353	138	340	133
3787	Brown Gray-DK	1258	495	1209	476	1165	458
3799	Pewter Gray-VY DK	451	177	434	170	418	164
3821	Straw	14	5	14	5	13	5
3827	Golden Brown-Pale	37	14	35	14	34	13
3828	Hazelnut Brown	530	208	510	200	491	193
3830	Terra Cotta-MD	136	53	131	51	126	49
3853	Autumn Gold-DK	12	4	12	4	11	4
3854	Autumn Gold-MD	6	2	6	2	5	2
3855	Autumn Gold-LT	42	17	41	16	39	15
3856	Mahogany-UL VY LT	148	58	142	55	137	53
3858	Rosewood-MD	311	122	299	118	288	113
3859	Rosewood-LT	637	251	613	241	590	232
3861	Cocoa-LT	686	270	660	260	635	250
3862	Mocha Beige-DK	281	110	270	106	260	102
3863	Mocha Beige-MD	673	265	647	255	623	245
3864	Mocha Beige-LT	935	368	899	354	866	341
3865	Winter White	1454	572	1398	550	1347	530

Extended thread usage table.							
DMC	Name	Usage (cm)	Usage (inch)	Usage (cm)	Usage (inch)	Usage (cm)	Usage (inch)
		28		30		32	
1	White 1	289	114	270	106	253	100
310	Black	198	78	185	73	173	68
317	Pewter Gray	41	16	38	15	36	14
356	Terra Cotta-MD	476	187	444	175	416	164
370	Mustard-MD	329	129	307	121	287	113
371	Mustard	211	83	197	77	185	73
407	Desert Sand-DK	532	209	496	195	465	183
413	Pewter Gray-DK	327	129	305	120	286	113
414	Steel Gray-DK	141	55	132	52	124	48
415	Pearl Gray	576	226	538	211	504	198
422	Hazelnut Brown-LT	203	80	189	74	177	70
436	Tan	367	144	343	134	321	126
437	Tan-LT	81	32	76	29	71	28
451	Shell Gray-DK	1052	414	982	386	920	362
452	Shell Gray-MD	1579	621	1474	580	1382	543
453	Shell Gray-LT	532	209	496	195	465	183
543	Beige Brown-UL VY LT	114	45	107	42	100	39
632	Desert Sand-UL VY DK	1005	395	938	369	879	346
640	Beige Gray-VY DK	366	144	341	134	320	126
645	Beaver Gray-VY DK	139	55	130	51	122	48
647	Beaver Gray-MD	149	59	139	55	131	51
677	Old Gold-VY LT	204	80	190	74	178	70
712	Cream	370	145	345	136	323	127
722	Orange Spice-LT	17	6	16	6	15	6
738	Tan-VY LT	129	51	121	47	113	44
739	Tan-UL VY LT	194	76	181	71	169	66
743	Yellow-MD	11	4	10	4	10	3
754	Peach-LT	31	12	29	11	27	10
758	Terra Cotta-VY LT	67	26	62	24	59	23
762	Pearl Gray-VY LT	454	178	424	166	397	156
778	Antique Mauve-VY LT	282	111	263	103	247	97
819	Baby Pink-LT	290	114	271	106	254	100
822	Beige Gray-LT	441	174	412	162	386	152
838	Beige Brown-VY DK	237	93	221	87	208	82
839	Beige Brown-DK	1167	459	1090	428	1022	402
842	Beige Brown-VY LT	831	327	776	305	727	286
844	Beaver Brown-UL DK	1210	476	1129	444	1059	416
927	Gray Green-LT	85	33	79	31	74	29
948	Peach-VY LT	373	147	348	137	326	128
950	Desert Sand-LT	278	109	259	102	243	96
977	Golden Brown-LT	39	15	36	14	34	13
3012	Khaki Green-MD	27	10	25	10	24	9
3021	Brown Gray-VY DK	136	53	127	50	119	47
3031	Mocha Brown-VY DK	271	107	253	100	237	93
3041	Antique Violet-MD	188	73	175	68	164	64
3042	Antique Violet-LT	332	131	310	122	290	114
3064	Desert Sand	638	251	596	234	559	219
3072	Beaver Gray-VY LT	90	35	84	33	79	31
3364	Pine Green	161	63	151	59	141	55
3756	Baby Blue-UL VY LT	653	257	609	239	571	224
3770	Tawny-VY LT	201	78	187	73	176	69
3772	Desert Sand-VY DK	1055	415	985	388	923	363
3774	Desert Sand-VY LT	328	129	306	120	287	113
3787	Brown Gray-DK	1123	442	1048	412	983	386

Copyright (c) 2005-, Golden Kite (Golden K.)

Internet: www.goldenkite.com

e-mail: info@goldenkite.com

3799	Pewter Gray-VY DK	403	158	376	148	353	138
3821	Straw	13	5	12	4	11	4
3827	Golden Brown-Pale	33	13	31	12	29	11
3828	Hazelnut Brown	473	186	442	173	414	163
3830	Terra Cotta-MD	122	48	113	44	106	42
3853	Autumn Gold-DK	11	4	10	4	10	3
3854	Autumn Gold-MD	5	2	5	2	5	2
3855	Autumn Gold-LT	38	15	35	14	33	13
3856	Mahogany-UL VY LT	132	51	123	48	115	45
3858	Rosewood-MD	278	109	259	102	243	96
3859	Rosewood-LT	569	224	531	209	498	196
3861	Cocoa-LT	613	241	572	225	536	211
3862	Mocha Beige-DK	251	98	234	92	219	86
3863	Mocha Beige-MD	601	237	561	221	526	207
3864	Mocha Beige-LT	835	329	779	307	731	287
3865	Winter White	1299	511	1212	477	1136	447

[illegible]

(9)

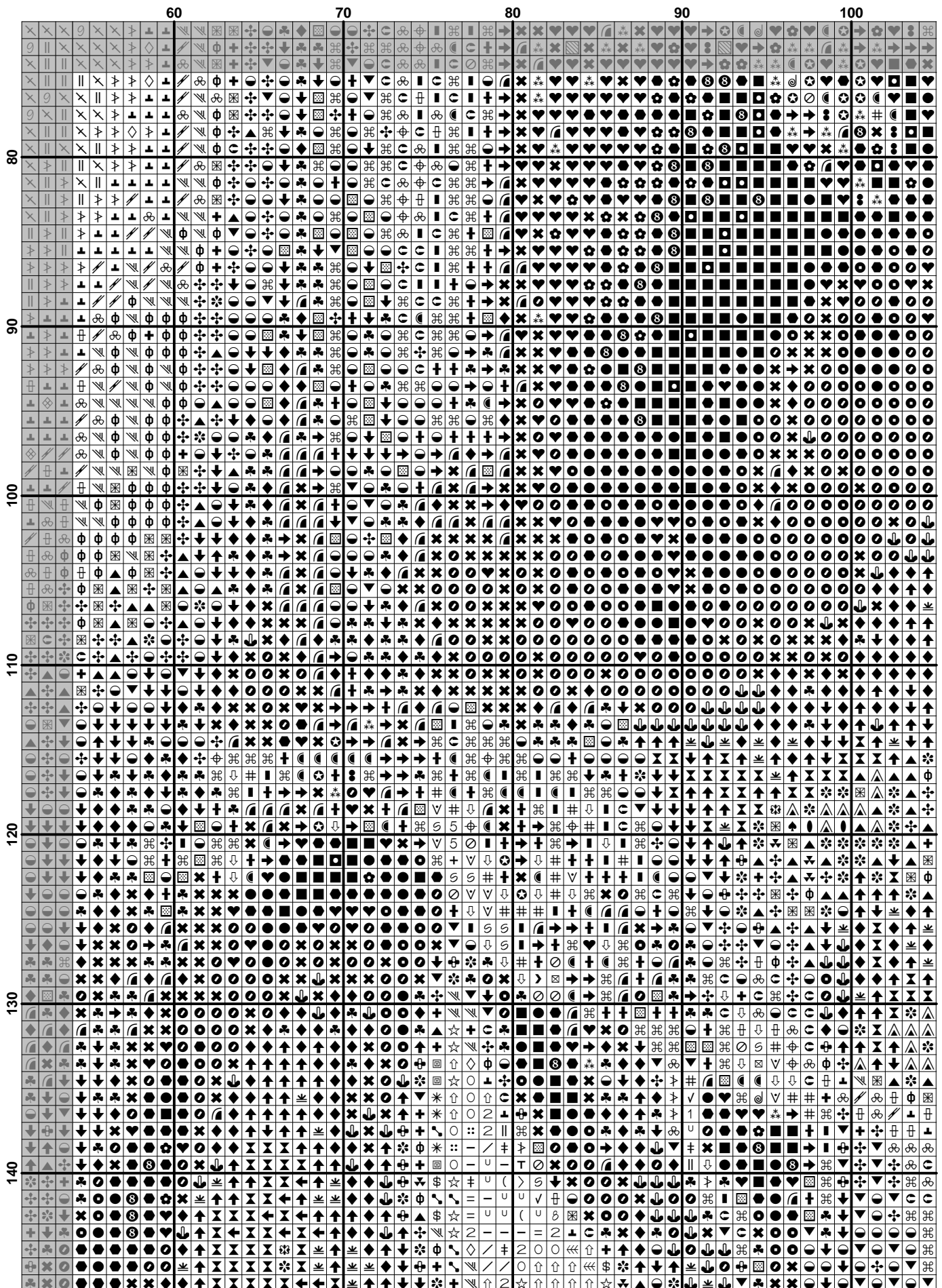
$$(9) \quad \frac{1}{\Gamma(\alpha)} \int_0^t (t-s)^{\alpha-1} f(s) ds = \frac{1}{\Gamma(\alpha)} \int_0^t (t-s)^{\alpha-1} f(s) ds \quad (10)$$

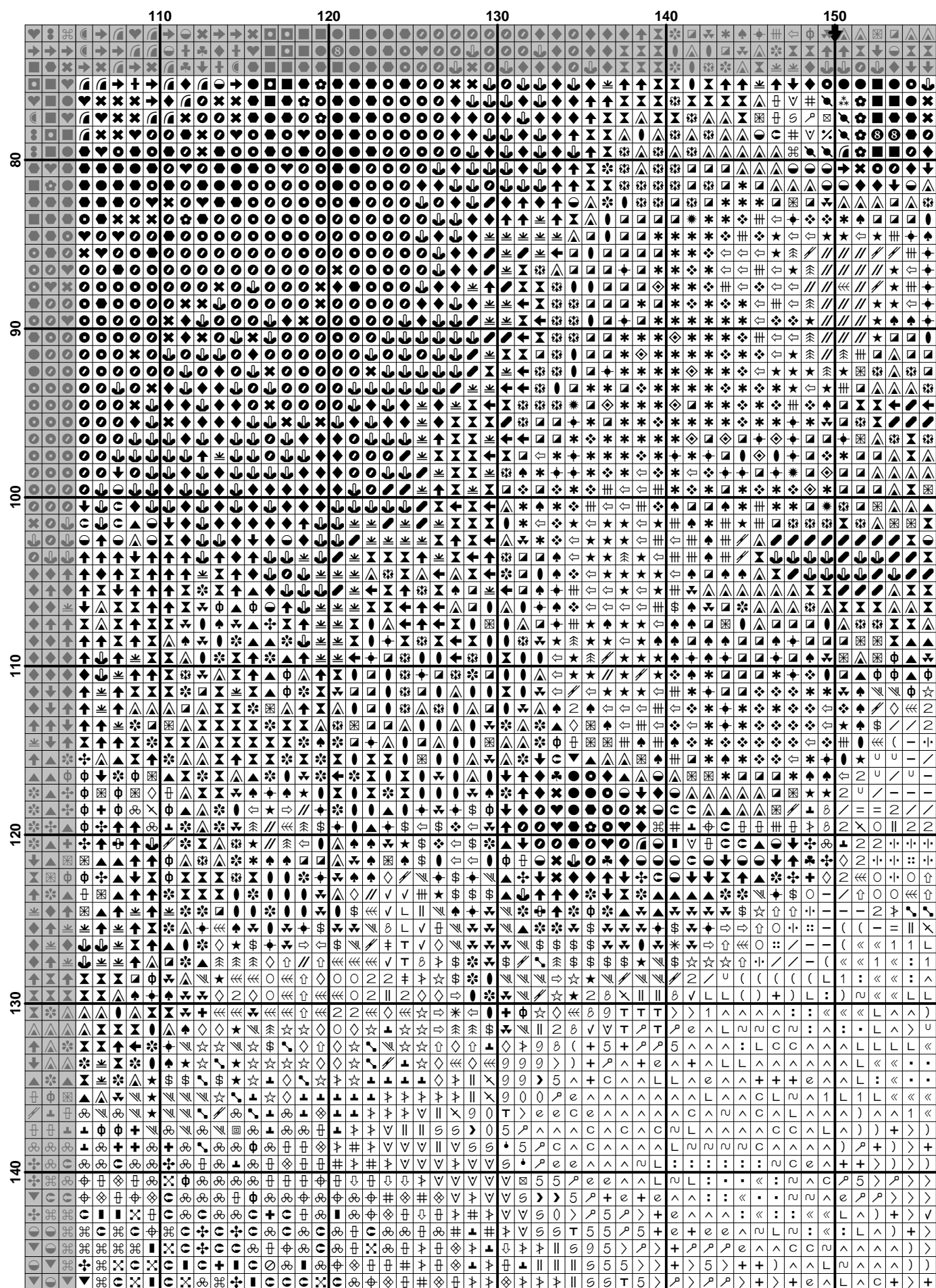
$$(10) \quad \mathcal{L}(\mathcal{A}) = \mathcal{L}(\mathcal{B}) \quad (11)$$



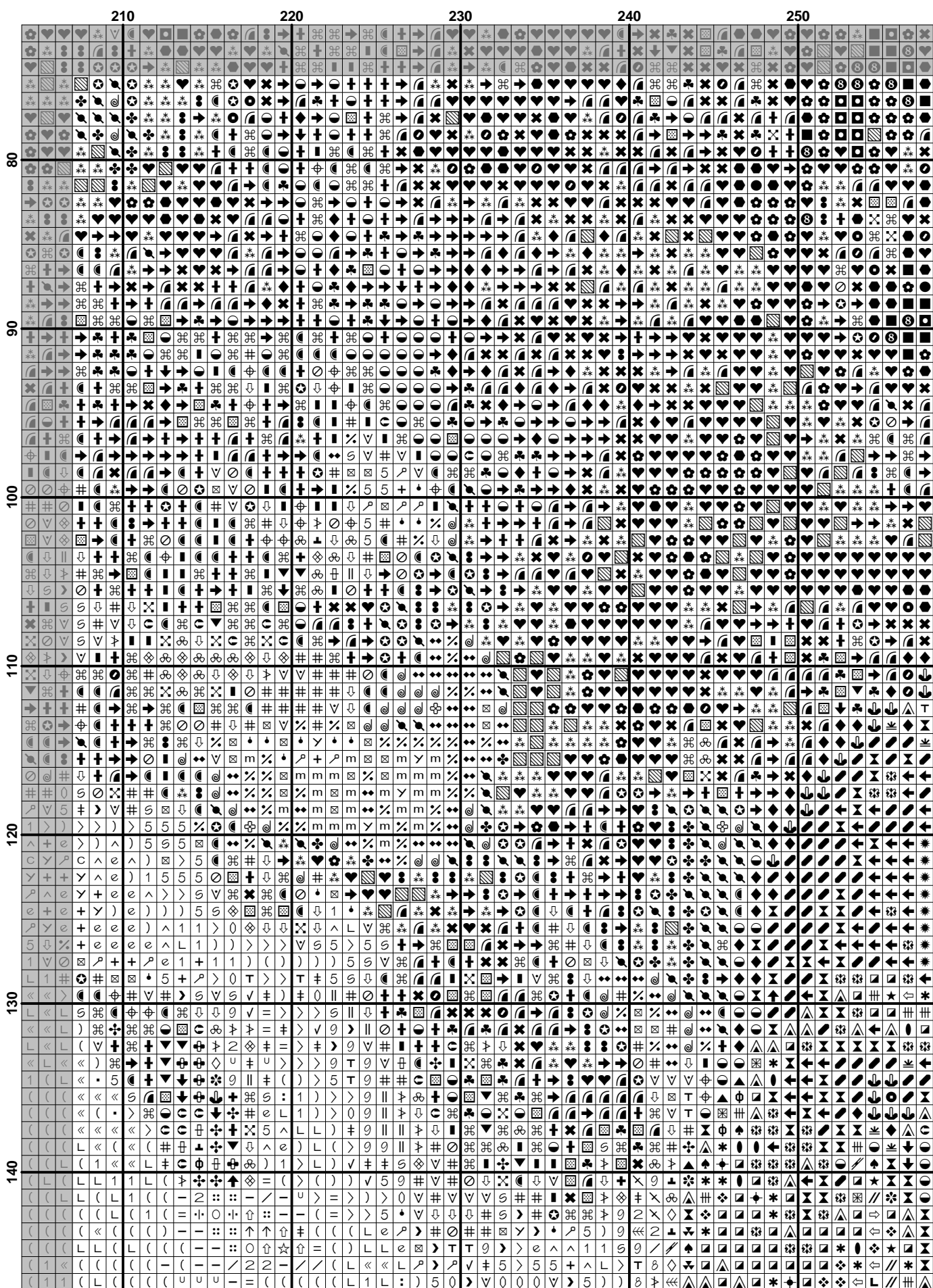


[illegible]

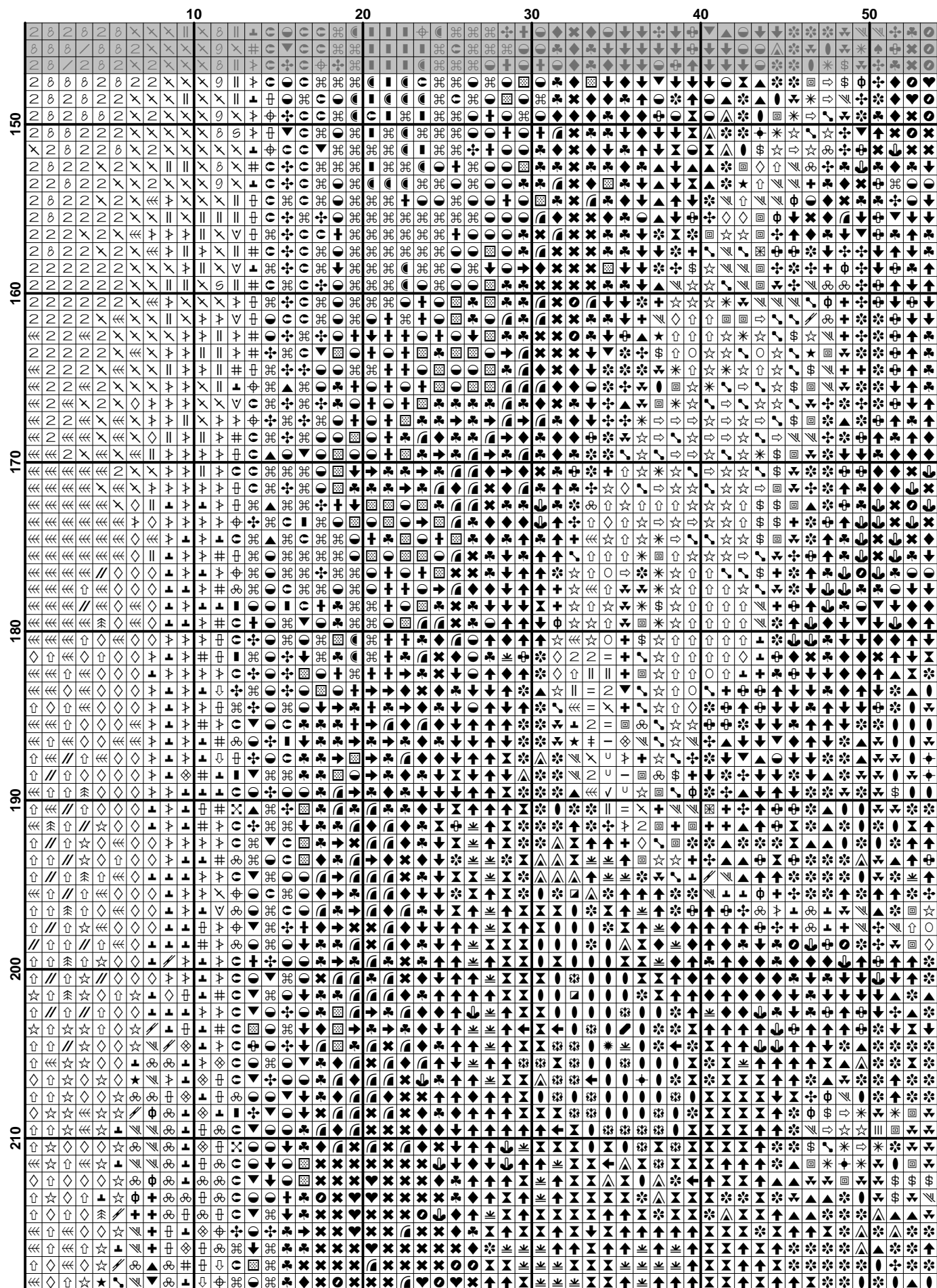


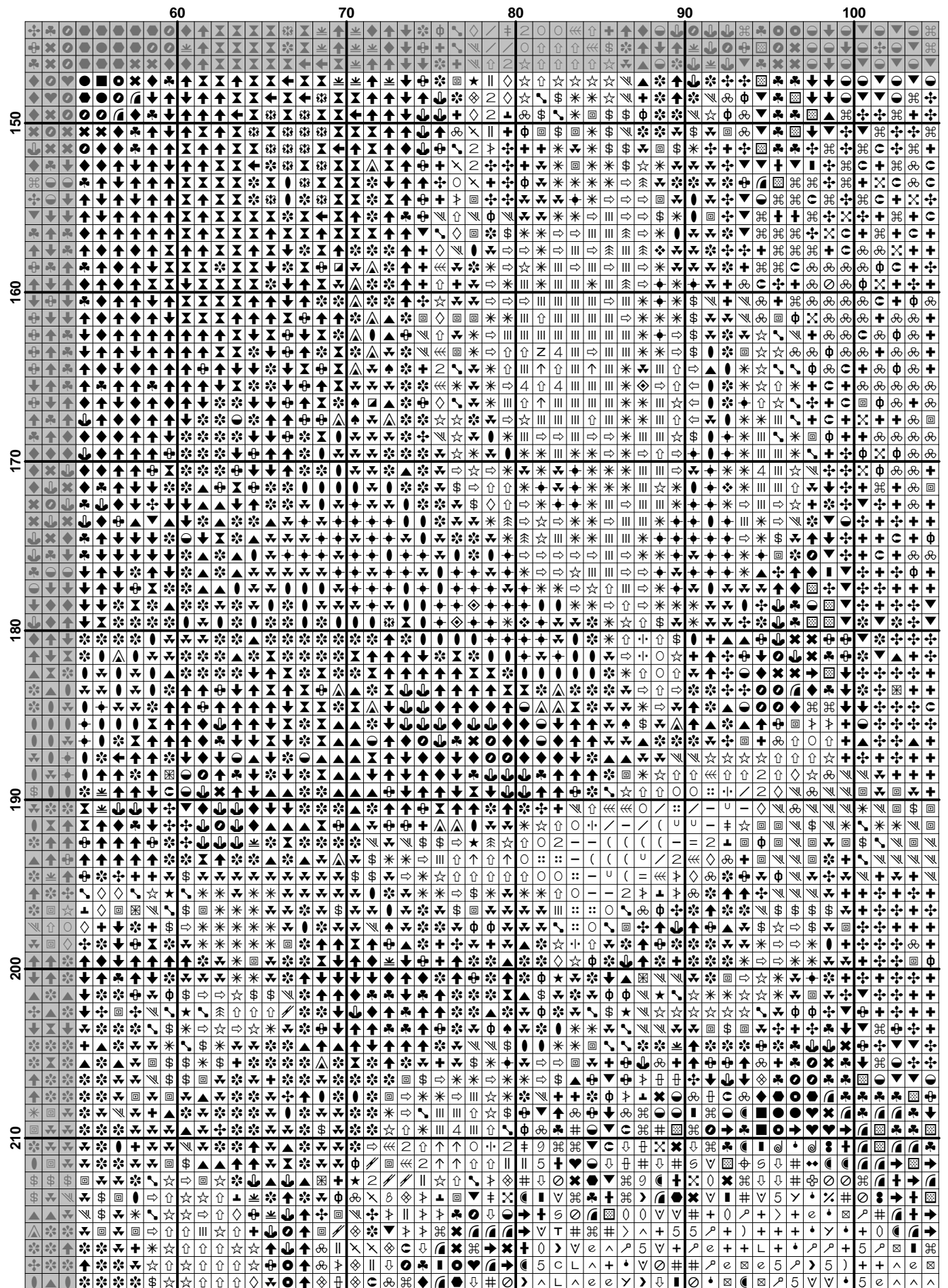






(18)

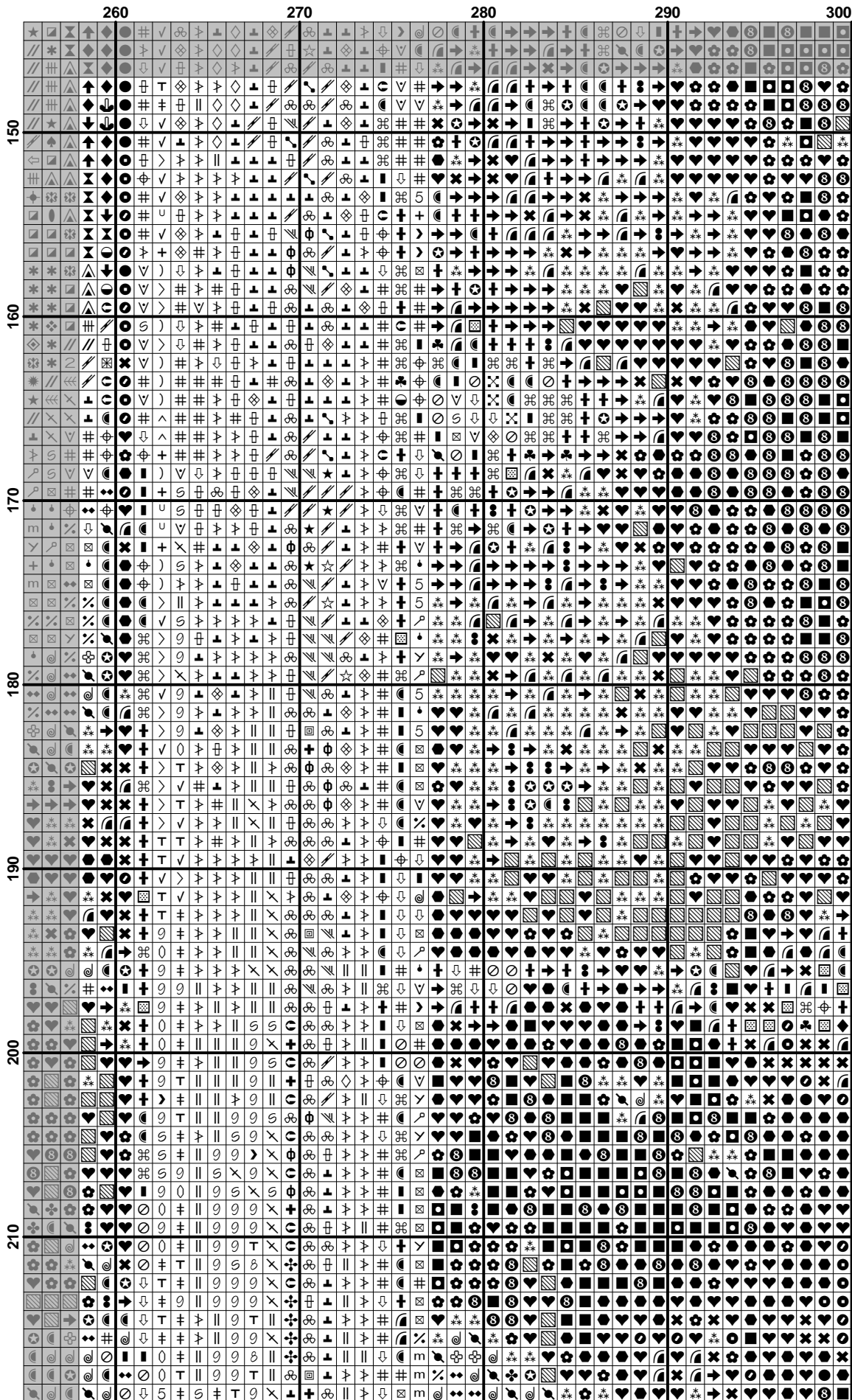


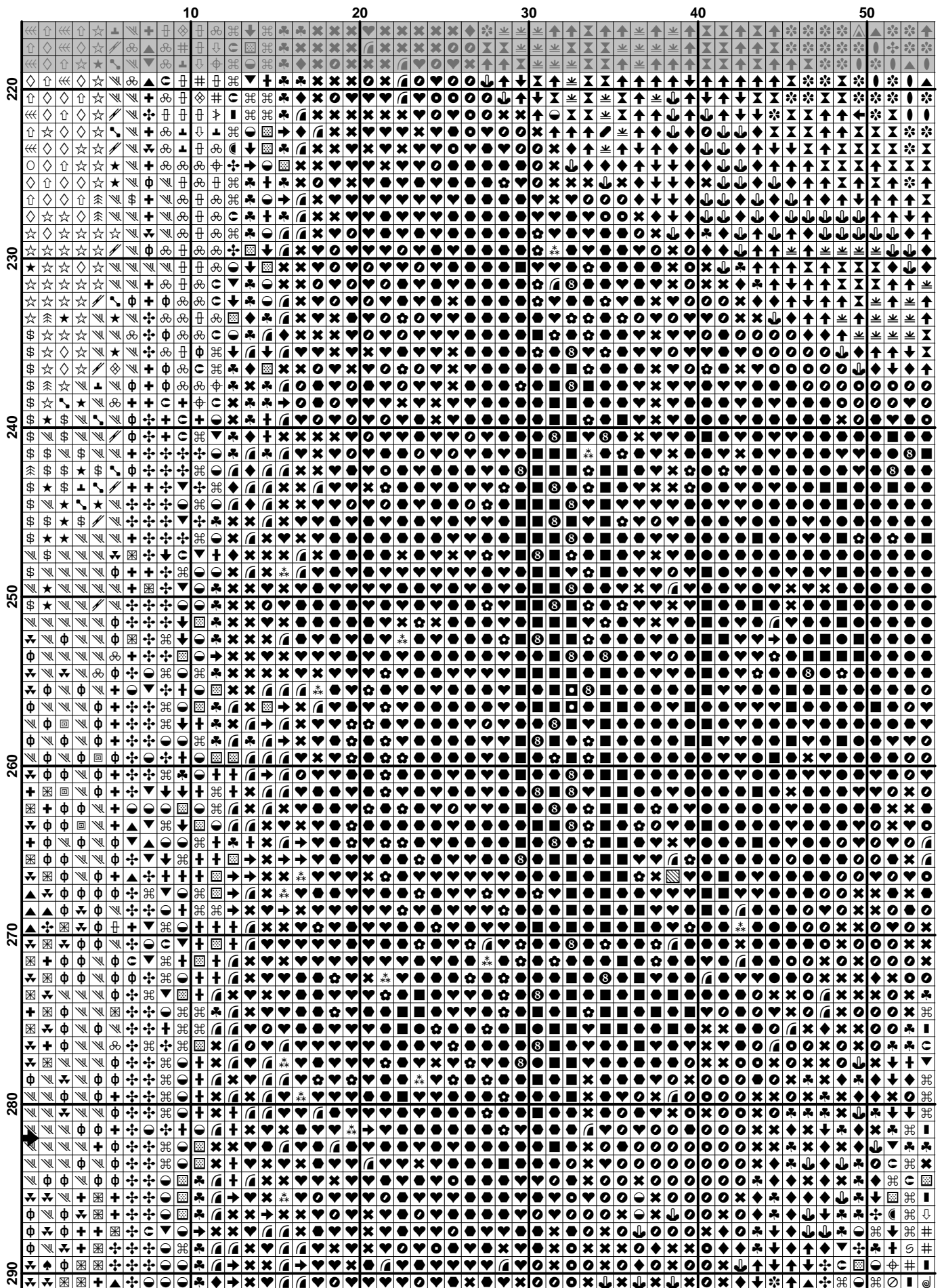


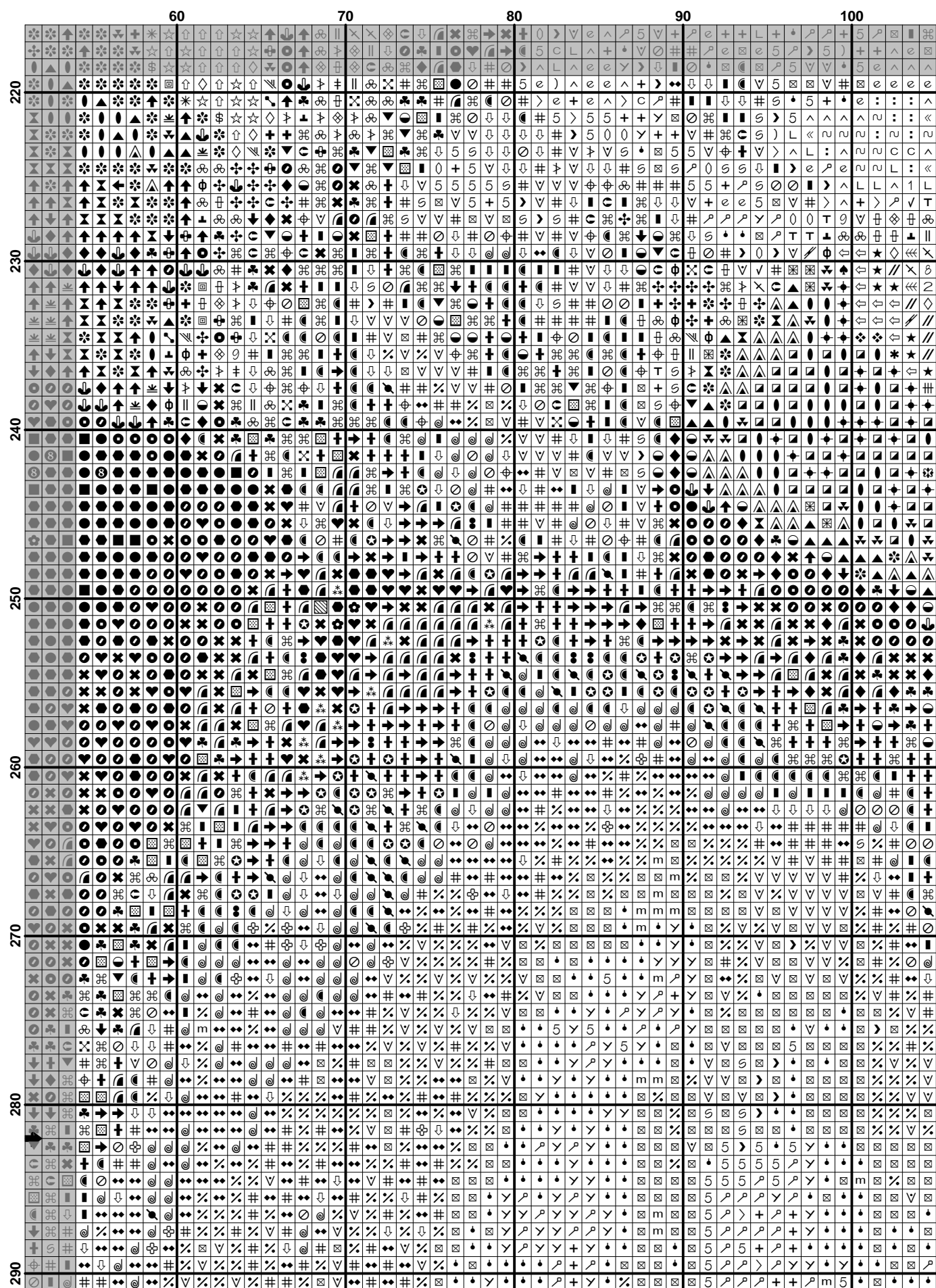
$$(21) \quad \mathcal{L}(\mathcal{A}) = \mathcal{L}(\mathcal{B}) \quad (22)$$

[illegible]

$$(23) \quad \mathcal{L}(\mathcal{A}) = \mathcal{L}(\mathcal{B}) \quad (24)$$







$$(27) \quad \mathcal{L}(\mathcal{A}) = \mathcal{L}(\mathcal{B}) \quad (28)$$

[illegible]

	210	220	230	240	250
220	#	+	+	+	+
230	#	+	+	+	+
240	#	+	+	+	+
250	#	+	+	+	+
260	#	+	+	+	+
270	#	+	+	+	+
280	#	+	+	+	+
290	#	+	+	+	+

	260	270	280	290	300
220
230
240
250
260
270
280
290

	10	20	30	40	50
290	☐	☐	☐	☐	☐
291	☐	☐	☐	☐	☐
292	☐	☐	☐	☐	☐
293	☐	☐	☐	☐	☐
294	☐	☐	☐	☐	☐
295	☐	☐	☐	☐	☐
296	☐	☐	☐	☐	☐
297	☐	☐	☐	☐	☐
298	☐	☐	☐	☐	☐
299	☐	☐	☐	☐	☐
300	☐	☐	☐	☐	☐
301	☐	☐	☐	☐	☐
302	☐	☐	☐	☐	☐
303	☐	☐	☐	☐	☐
304	☐	☐	☐	☐	☐
305	☐	☐	☐	☐	☐
306	☐	☐	☐	☐	☐
307	☐	☐	☐	☐	☐
308	☐	☐	☐	☐	☐
309	☐	☐	☐	☐	☐
310	☐	☐	☐	☐	☐
311	☐	☐	☐	☐	☐
312	☐	☐	☐	☐	☐
313	☐	☐	☐	☐	☐
314	☐	☐	☐	☐	☐
315	☐	☐	☐	☐	☐
316	☐	☐	☐	☐	☐
317	☐	☐	☐	☐	☐
318	☐	☐	☐	☐	☐
319	☐	☐	☐	☐	☐
320	☐	☐	☐	☐	☐
321	☐	☐	☐	☐	☐
322	☐	☐	☐	☐	☐
323	☐	☐	☐	☐	☐
324	☐	☐	☐	☐	☐
325	☐	☐	☐	☐	☐
326	☐	☐	☐	☐	☐
327	☐	☐	☐	☐	☐
328	☐	☐	☐	☐	☐
329	☐	☐	☐	☐	☐
330	☐	☐	☐	☐	☐
331	☐	☐	☐	☐	☐
332	☐	☐	☐	☐	☐
333	☐	☐	☐	☐	☐
334	☐	☐	☐	☐	☐
335	☐	☐	☐	☐	☐
336	☐	☐	☐	☐	☐
337	☐	☐	☐	☐	☐
338	☐	☐	☐	☐	☐
339	☐	☐	☐	☐	☐
340	☐	☐	☐	☐	☐
341	☐	☐	☐	☐	☐
342	☐	☐	☐	☐	☐
343	☐	☐	☐	☐	☐
344	☐	☐	☐	☐	☐
345	☐	☐	☐	☐	☐
346	☐	☐	☐	☐	☐
347	☐	☐	☐	☐	☐
348	☐	☐	☐	☐	☐
349	☐	☐	☐	☐	☐
350	☐	☐	☐	☐	☐
351	☐	☐	☐	☐	☐
352	☐	☐	☐	☐	☐
353	☐	☐	☐	☐	☐
354	☐	☐	☐	☐	☐
355	☐	☐	☐	☐	☐
356	☐	☐	☐	☐	☐
357	☐	☐	☐	☐	☐
358	☐	☐	☐	☐	☐
359	☐	☐	☐	☐	☐
360	☐	☐	☐	☐	☐

$$(32) \quad \mathcal{L}(\mathcal{A}) = \mathcal{L}(\mathcal{B}) \quad (33)$$

$$(33) \quad \mathcal{L}(\mathcal{A}) \subseteq \mathcal{L}(\mathcal{B}) \iff \mathcal{A} \subseteq \mathcal{B} \quad (34)$$

$$(34) \quad \mathcal{L}(\mathcal{A}) = \mathcal{L}(\mathcal{B}) \quad (35)$$

$$(35) \quad \mathcal{L}(\mathcal{A}) = \mathcal{L}(\mathcal{B}) \quad (36)$$

(36)

[illegible]

$$(38) \quad \mathcal{L}(\mathcal{A}) = \mathcal{L}(\mathcal{B}) \quad (39)$$

$$(39) \quad \frac{1}{\Gamma(\alpha)} \int_0^t (t-s)^{\alpha-1} f(s) ds = \frac{1}{\Gamma(\alpha)} \int_0^t (t-s)^{\alpha-1} f(s) ds$$

$$(40) \quad \frac{1}{\Gamma(\alpha)} \int_0^t (t-s)^{\alpha-1} f(s) ds = \frac{1}{\Gamma(\alpha)} \int_0^t (t-s)^{\alpha-1} \left(\sum_{k=0}^\infty \frac{(t-s)^k}{k!} f^{(k)}(s) \right) ds$$

[illegible]

(42)

[illegible]

	60	70	80	90	100
440
450
460
470
480
490
500

