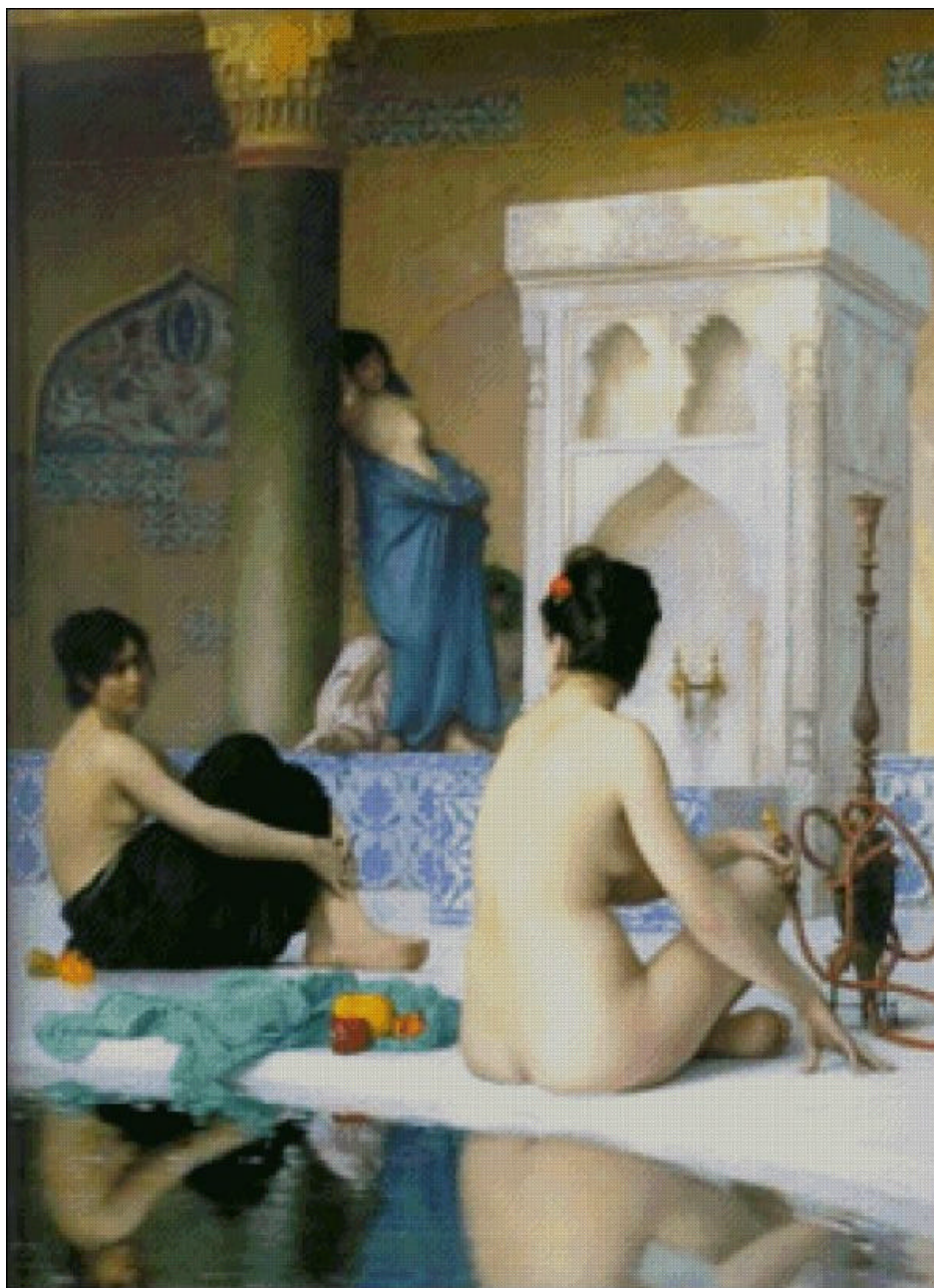


759 After the Bath



This pattern may not be copied, sold or in any other way handled in any way that violates the international copyright laws. If you get hold of this pattern (and or this document) in any other way than via a direct download from www.goldenkite.com or via a mail from us, you should report that to us at legal_actions@goldenkite.com .

Copyright (c) 2005-, Golden Kite. All rights reserved.

Copyright (c) 2005-, Golden Kite (Golden K.)
Internet: www.goldenkite.com

e-mail: info@goldenkite.com

Instructions

Thank you for choosing Golden Kite products!
We hope you will have lots of fun with this cross-stitch pattern!

Fabric

Press the fabric with an iron if needed. A good thing to prevent the fabric from fraying is to machine zigzag the edges.

On large patterns, it is easiest to start from the upper left corner of the design. Make sure you have the proper margins before starting and that the fabric piece is of the correct size. The best way to verify this is to count all stitch positions on the fabric from the upper left corner downwards and to the right to make sure there is enough space for the design.

Some prefer to start in the center of the design instead. To locate the center of the fabric, fold the fabric in half both vertically and horizontally. The center is located where these two folds meet.

Stitches

Each length of DMC tread consists of six strands.

Use two of these strands for all stitches.

Note that some colors may be mixes (or blends) between two different pure colors. In that case take one strand of the two colors each and thread the two strands into the needle at the same time for stitching.

All stitches are full cross-stitches. No half-stitching and no back-stitching is necessary in this pattern.

All cross-stitches will be worked into the holes in the fabric from left to right. Always use the larger holes in the fabric for the stitches. Adjacent stitches should meet in the same hole. Make sure all stitches cross in the same direction.

Please be careful when washing the finished embroidery! The cotton thread may bleed when washed. Only hand wash it in lukewarm water. Remove excess water by roll it in a towel and lay it flat to air dry. Natural fabrics may shrink slightly when washed. We do not recommend washing the embroidery if not absolutely necessary and we take no responsibility for any damage that may occur.

When you start using this product you agree that Golden Kite (Golden K), or any people working for or in association with Golden Kite (Golden K), cannot be set responsible for any physical, mental, economical or other type of damage caused by this product (including this document, pattern, threads, needles and any other parts received by you from Golden Kite (Golden K)).

This pattern may not be copied, sold or in any other way handled in any way that violates the international copyright laws. If you get hold of this pattern (and or this document) in any other way than via a direct download from www.goldenkite.com or via a mail from us, you should report that to us at legal_actions@goldenkite.com .

After the Bath

Stitch Count	
Horizontal:	250
Vertical:	343

Recommended Fabric Color
Antique White

This table tells the size of the pattern (without any margins) and the size of the fabric required to stitch the pattern (including recommended margins). 3 inch margins have been added on each side in the 'Including Margins' row.

The sizes are given for 14, 16 and 18 stitches per inch fabrics.

Make sure to use the 'Including Margins' row when cutting the piece of fabric to be used. Also make sure that 3 inch margins are enough for your stitching technique and add more margin areas if necessary.

	14				16				18			
	Width		Height		Width		Height		Width		Height	
	cm	inch	cm	inch	cm	inch	cm	inch	cm	inch	cm	inch
Pattern:	46	17.83	63	24.42	40	15.6	55	21.37	36	13.875	49	19
Including Margins:	62	24	79	31	56	22	71	28	52	20	65	26
	10				12				24			
	Width		Height		Width		Height		Width		Height	
	cm	inch	cm	inch	cm	inch	cm	inch	cm	inch	cm	inch
Pattern:	64	24.96	88	34.18	53	20.8	73	28.49	26	10.4	36	14.24
Including Margins:	80	31	104	41	69	27	89	35	42	17	52	21
	25				26				27			
	Width		Height		Width		Height		Width		Height	
	cm	inch	cm	inch	cm	inch	cm	inch	cm	inch	cm	inch
Pattern:	25	9.98	35	13.67	24	9.6	33	13.14	23	9.24	32	12.66
Including Margins:	41	16	51	20	40	16	49	20	39	16	48	19
	28				30				32			
	Width		Height		Width		Height		Width		Height	
	cm	inch	cm	inch	cm	inch	cm	inch	cm	inch	cm	inch
Pattern:	23	8.91	31	12.21	21	8.32	29	11.39	20	7.8	27	10.68
Including Margins:	39	15	47	19	37	15	45	18	36	14	43	17

Solid Color Stitches. Use two strands of the specified color for these stitches.		
Symbol	DMC	Name
z	318	Steel Gray-LT
⋄	407	Desert Sand-DK
⚙	413	Pewter Gray-DK
✱	420	Hazelnut Brown-DK
⊠	452	Shell Gray-MD
■	500	Blue Green-VY DK
▒	501	Blue Green-DK
✱	503	Blue Green-MD
↓	520	Fern Green-DK
⊞	524	Fern Green-VY LT
∞	543	Beige Brown-UL VY LT
○	598	Turquoise-LT
⊙	611	Drab Brown
⊞	612	Drab Brown-LT
5	613	Drab Brown-VY LT
▲	642	Beige Gray-DK
▲	645	Beaver Gray-VY DK
X	647	Beaver Gray-MD
•	648	Beaver Gray-LT
c	677	Old Gold-VY LT
⊕	680	Old Gold-DK
1	712	Cream
→	730	Olive Green-VY DK
✱	732	Olive Green
4	734	Olive Green-LT
9	738	Tan-VY LT
√	739	Tan-UL VY LT
«	746	Off White
e	762	Pearl Gray-VY LT
6	800	Delft Blue-Pale
∕	807	Peacock Blue
v	809	Delft Blue
⦿	813	Blue-LT
=	822	Beige Gray-LT
⦿	832	Golden Olive
↑	927	Gray Green-LT
↑	928	Gray Green-VY LT

♥	930	Antique Blue-DK
⦿	943	Bright Green-MD
⊞	958	Sea Green-DK
//	959	Sea Green-MD
3	964	Sea Green-LT
□	972	Canary-DK
‡	973	Canary-BRT
⦿	991	Aquamarine-DK
✱	3011	Khaki Green-DK
⦿	3012	Khaki Green-MD
5	3013	Khaki Green-LT
Y	3024	Brown Gray-VY LT
⑧	3031	Mocha Brown-VY DK
★	3032	Mocha Brown-MD
♠	3041	Antique Violet-MD
✱	3051	Green Gray-DK
✱	3052	Green Gray-MD
⊕	3064	Desert Sand
~	3756	Baby Blue-UL VY LT
♣	3768	Gray Green-DK
(3770	Tawny-VY LT
+	3774	Desert Sand-VY LT
⊙	3778	Terra Cotta-LT
~	3782	Mocha Brown-LT
⊞	3787	Brown Gray-DK
⦿	3790	Beige Gray-UL DK
●	3799	Pewter Gray-VY DK
⊕	3809	Turquoise-VY DK
♦	3810	Turquoise-DK
⊞	3814	Aquamarine
^	3823	Yellow-UL Pale
v	3824	Apricot-LT
ρ	3841	Baby Blue-Pale
+	3848	Teal Green-MD
↘	3849	Teal Green-LT
⬆	3853	Autumn Gold-DK
\$	3859	Rosewood-LT
⊙	3863	Mocha Beige-MD
•	3865	Winter White
)	Ecru	Ecru

Blend Stitches. Use one strand of each of DMC1 and DMC2 for these stitches.

Symbol	DMC1	Name1	DMC2	Name2
L	3823	Yellow-UL Pale	746	Off White
田	414	Steel Gray-DK	318	Steel Gray-LT
㊄	414	Steel Gray-DK	647	Beaver Gray-MD
⚡	926	Gray Green-MD	645	Beaver Gray-VY DK
↓	520	Fern Green-DK	3346	Hunter Green
+	3052	Green Gray-MD	3790	Beige Gray-UL DK
:	3756	Baby Blue-UL VY LT	3865	Winter White
☞	3863	Mocha Beige-MD	3032	Mocha Brown-MD
⬢	413	Pewter Gray-DK	3799	Pewter Gray-VY DK
H	613	Drab Brown-VY LT	739	Tan-UL VY LT
↘	524	Fern Green-VY LT	647	Beaver Gray-MD
>	677	Old Gold-VY LT	739	Tan-UL VY LT
☞	3346	Hunter Green	3790	Beige Gray-UL DK
♡	738	Tan-VY LT	3822	Straw-LT
⬢	3787	Brown Gray-DK	3768	Gray Green-DK
☞	3346	Hunter Green	645	Beaver Gray-VY DK
☞	645	Beaver Gray-VY DK	640	Beige Gray-VY DK
†	645	Beaver Gray-VY DK	3787	Brown Gray-DK
☞	3787	Brown Gray-DK	3790	Beige Gray-UL DK
☞	3346	Hunter Green	3052	Green Gray-MD
☞	3052	Green Gray-MD	645	Beaver Gray-VY DK
☞	645	Beaver Gray-VY DK	3768	Gray Green-DK
☞	3787	Brown Gray-DK	3799	Pewter Gray-VY DK
☞	503	Blue Green-MD	926	Gray Green-MD
▲	3768	Gray Green-DK	502	Blue Green
=	926	Gray Green-MD	647	Beaver Gray-MD
卅	503	Blue Green-MD	645	Beaver Gray-VY DK
☞	3768	Gray Green-DK	3346	Hunter Green
◆	3768	Gray Green-DK	520	Fern Green-DK
●	520	Fern Green-DK	3799	Pewter Gray-VY DK
■	935	Avocado Green-DK	500	Blue Green-VY DK
●	3768	Gray Green-DK	3799	Pewter Gray-VY DK
☞	3032	Mocha Brown-MD	3052	Green Gray-MD
↘	3013	Khaki Green-LT	647	Beaver Gray-MD
↔	642	Beige Gray-DK	647	Beaver Gray-MD
↓	642	Beige Gray-DK	3052	Green Gray-MD
#	3052	Green Gray-MD	3013	Khaki Green-LT
∩	3013	Khaki Green-LT	503	Blue Green-MD
⌘	640	Beige Gray-VY DK	3052	Green Gray-MD
◎	645	Beaver Gray-VY DK	3032	Mocha Brown-MD
⌘	3799	Pewter Gray-VY DK	3052	Green Gray-MD
L	3052	Green Gray-MD	524	Fern Green-VY LT
☞	3863	Mocha Beige-MD	3012	Khaki Green-MD
⇒	3012	Khaki Green-MD	612	Drab Brown-LT
▲	738	Tan-VY LT	3782	Mocha Brown-LT
☞	3790	Beige Gray-UL DK	3799	Pewter Gray-VY DK
I	3790	Beige Gray-UL DK	611	Drab Brown
●	3031	Mocha Brown-VY DK	3051	Green Gray-DK
▶	3052	Green Gray-MD	3787	Brown Gray-DK
◁	738	Tan-VY LT	613	Drab Brown-VY LT
::	3774	Desert Sand-VY LT	3823	Yellow-UL Pale
♫	3809	Turquoise-VY DK	3810	Turquoise-DK
✕	3810	Turquoise-DK	807	Peacock Blue

◎	414	Steel Gray-DK	3809	Turquoise-VY DK
☐	3809	Turquoise-VY DK	807	Peacock Blue
●	3848	Teal Green-MD	3849	Teal Green-LT
←	3051	Green Gray-DK	3787	Brown Gray-DK
○	3849	Teal Green-LT	3768	Gray Green-DK
⊗	930	Antique Blue-DK	3810	Turquoise-DK
u	762	Pearl Gray-VY LT	ecru	Ecru
›	613	Drab Brown-VY LT	524	Fern Green-VY LT
—	822	Beige Gray-LT	712	Cream
8	3811	Turquoise-VY LT	3024	Brown Gray-VY LT
α	928	Gray Green-VY LT	3024	Brown Gray-VY LT
≡	927	Gray Green-LT	928	Gray Green-VY LT
7	928	Gray Green-VY LT	3811	Turquoise-VY LT
m	813	Blue-LT	800	Delft Blue-Pale
≠	813	Blue-LT	414	Steel Gray-DK
●	420	Hazelnut Brown-DK	3011	Khaki Green-DK
⊖	3013	Khaki Green-LT	3045	Yellow Beige-DK
◇	3782	Mocha Brown-LT	3013	Khaki Green-LT
‡	642	Beige Gray-DK	738	Tan-VY LT
‡	3045	Yellow Beige-DK	738	Tan-VY LT
×	598	Turquoise-LT	318	Steel Gray-LT
∴	800	Delft Blue-Pale	3841	Baby Blue-Pale
/	3756	Baby Blue-UL VY LT	3841	Baby Blue-Pale
☆	809	Delft Blue	800	Delft Blue-Pale
○	318	Steel Gray-LT	3841	Baby Blue-Pale
⌘	3012	Khaki Green-MD	833	Golden Olive-LT
⌘	3853	Autumn Gold-DK	833	Golden Olive-LT
	3853	Autumn Gold-DK	972	Canary-DK
2	598	Turquoise-LT	964	Sea Green-LT
≡	964	Sea Green-LT	959	Sea Green-MD
τ	973	Canary-BRT	972	Canary-DK
0	613	Drab Brown-VY LT	224	Shell Pink-VY LT
∩	3853	Autumn Gold-DK	3721	Shell Pink-DK
?	739	Tan-UL VY LT	224	Shell Pink-VY LT
	407	Desert Sand-DK	647	Beaver Gray-MD
⊕	3859	Rosewood-LT	3863	Mocha Beige-MD
▼	3721	Shell Pink-DK	420	Hazelnut Brown-DK
✚	3721	Shell Pink-DK	3863	Mocha Beige-MD
✚	420	Hazelnut Brown-DK	730	Olive Green-VY DK
□	972	Canary-DK	832	Golden Olive
◇	832	Golden Olive	734	Olive Green-LT
◻	972	Canary-DK	734	Olive Green-LT
↑	930	Antique Blue-DK	3809	Turquoise-VY DK
●	930	Antique Blue-DK	991	Aquamarine-DK

This table specifies how much thread of each color is required to stitch this pattern. It is good to know that one complete DMC skein contains 313 inches (795 cm) thread.

DMC	Name	Usage (cm)	Usage (inch)	Usage (cm)	Usage (inch)	Usage (cm)	Usage (inch)
		14		16		18	
224	Shell Pink-VY LT	59	23	57	22	51	20
318	Steel Gray-LT	238	93	227	89	204	80
407	Desert Sand-DK	55	21	52	20	47	18
413	Pewter Gray-DK	112	44	107	42	96	37
414	Steel Gray-DK	149	58	142	55	127	50
420	Hazelnut Brown-DK	53	20	50	19	45	17
452	Shell Gray-MD	97	38	93	36	83	32
500	Blue Green-VY DK	882	347	840	330	756	297
501	Blue Green-DK	48	18	46	18	41	16
502	Blue Green	87	34	82	32	74	29
503	Blue Green-MD	254	100	241	94	217	85
520	Fern Green-DK	544	214	518	203	466	183
524	Fern Green-VY LT	361	142	344	135	310	122
543	Beige Brown-UL VY LT	153	60	145	57	131	51
598	Turquoise-LT	93	36	88	34	79	31
611	Drab Brown	240	94	229	90	206	81
612	Drab Brown-LT	243	95	231	90	208	81
613	Drab Brown-VY LT	479	188	456	179	410	161
640	Beige Gray-VY DK	85	33	81	31	73	28
642	Beige Gray-DK	297	116	283	111	255	100
645	Beaver Gray-VY DK	911	358	867	341	781	307
647	Beaver Gray-MD	473	186	450	177	405	159
648	Beaver Gray-LT	183	72	174	68	157	61
677	Old Gold-VY LT	17	6	16	6	14	5
680	Old Gold-DK	9	3	9	3	8	3
712	Cream	394	155	376	148	338	133
730	Olive Green-VY DK	150	59	143	56	128	50
732	Olive Green	119	46	113	44	102	40
734	Olive Green-LT	165	64	157	61	141	55
738	Tan-VY LT	246	96	234	92	211	83
739	Tan-UL VY LT	254	100	242	95	218	85
746	Off White	805	316	766	301	690	271
762	Pearl Gray-VY LT	599	235	570	224	513	201
800	Delft Blue-Pale	196	77	187	73	168	66
807	Peacock Blue	74	29	71	27	64	25
809	Delft Blue	93	36	89	35	80	31
813	Blue-LT	99	38	94	37	85	33
822	Beige Gray-LT	368	144	350	137	315	124
832	Golden Olive	218	85	207	81	187	73
833	Golden Olive-LT	78	30	74	29	66	25
926	Gray Green-MD	258	101	246	96	221	87
927	Gray Green-LT	208	81	198	77	178	70
928	Gray Green-VY LT	651	256	620	244	558	219
930	Antique Blue-DK	162	63	154	60	139	54
935	Avocado Green-DK	215	84	204	80	184	72
943	Bright Green-MD	18	7	17	6	15	5
958	Sea Green-DK	57	22	54	21	49	19
959	Sea Green-MD	217	85	206	81	186	73
964	Sea Green-LT	112	44	106	41	96	37
972	Canary-DK	41	16	39	15	35	13
973	Canary-BRT	6	2	6	2	5	1
991	Aquamarine-DK	24	9	22	8	20	7
3011	Khaki Green-DK	324	127	309	121	278	109
3012	Khaki Green-MD	541	212	515	202	463	182

Copyright (c) 2005-, Golden Kite (Golden K.)

Internet: www.goldenkite.com

e-mail: info@goldenkite.com

3013	Khaki Green-LT	258	101	246	96	221	87
3024	Brown Gray-VY LT	687	270	655	257	589	231
3031	Mocha Brown-VY DK	79	31	75	29	67	26
3032	Mocha Brown-MD	293	115	279	109	251	98
3041	Antique Violet-MD	18	7	17	6	15	5
3045	Yellow Beige-DK	100	39	95	37	86	33
3051	Green Gray-DK	500	196	476	187	428	168
3052	Green Gray-MD	993	390	946	372	851	335
3064	Desert Sand	1	1	1	1	0	1
3346	Hunter Green	426	167	406	159	365	143
3721	Shell Pink-DK	12	4	11	4	10	3
3756	Baby Blue-UL VY LT	1023	402	974	383	877	345
3768	Gray Green-DK	631	248	601	236	541	212
3770	Tawny-VY LT	82	32	78	30	70	27
3774	Desert Sand-VY LT	193	75	184	72	165	64
3778	Terra Cotta-LT	1	1	1	1	1	1
3782	Mocha Brown-LT	233	91	222	87	200	78
3787	Brown Gray-DK	815	320	776	305	698	274
3790	Beige Gray-UL DK	411	161	392	154	352	138
3799	Pewter Gray-VY DK	1022	402	974	383	876	344
3809	Turquoise-VY DK	229	90	218	85	196	77
3810	Turquoise-DK	212	83	202	79	182	71
3811	Turquoise-VY LT	230	90	219	86	197	77
3814	Aquamarine	21	8	20	7	18	7
3822	Straw-LT	10	3	9	3	8	3
3823	Yellow-UL Pale	396	155	377	148	339	133
3824	Apricot-LT	0	1	0	1	0	1
3841	Baby Blue-Pale	323	127	308	121	277	109
3848	Teal Green-MD	89	35	85	33	76	29
3849	Teal Green-LT	104	40	99	38	89	35
3853	Autumn Gold-DK	13	5	13	5	11	4
3859	Rosewood-LT	8	3	7	2	7	2
3863	Mocha Beige-MD	105	41	100	39	90	35
3865	Winter White	1456	573	1387	546	1248	491
ecru	Ecru	367	144	349	137	314	123

Extended thread usage table.							
DMC	Name	Usage (cm)	Usage (inch)	Usage (cm)	Usage (inch)	Usage (cm)	Usage (inch)
		10		12		24	
224	Shell Pink-VY LT	92	36	77	30	38	15
318	Steel Gray-LT	367	144	306	120	153	60
407	Desert Sand-DK	85	32	71	27	35	14
413	Pewter Gray-DK	173	67	144	56	72	28
414	Steel Gray-DK	229	90	191	75	95	38
420	Hazelnut Brown-DK	81	31	68	26	34	13
452	Shell Gray-MD	149	58	125	48	62	24
500	Blue Green-VY DK	1361	535	1134	446	567	223
501	Blue Green-DK	74	29	62	24	31	12
502	Blue Green	133	52	111	44	56	22
503	Blue Green-MD	391	153	326	128	163	64
520	Fern Green-DK	839	329	699	275	350	137
524	Fern Green-VY LT	558	220	465	183	233	92
543	Beige Brown-UL VY LT	236	92	197	77	98	38
598	Turquoise-LT	142	56	119	47	59	23
611	Drab Brown	371	146	309	122	155	61
612	Drab Brown-LT	374	146	312	122	156	61

613	Drab Brown-VY LT	738	290	615	242	308	121
640	Beige Gray-VY DK	131	50	110	42	55	21
642	Beige Gray-DK	459	180	383	150	191	75
645	Beaver Gray-VY DK	1406	553	1172	461	586	230
647	Beaver Gray-MD	729	286	608	239	304	119
648	Beaver Gray-LT	283	110	236	92	118	46
677	Old Gold-VY LT	25	9	21	8	11	4
680	Old Gold-DK	14	5	12	5	6	2
712	Cream	608	239	507	200	254	100
730	Olive Green-VY DK	230	90	192	75	96	38
732	Olive Green	184	72	153	60	77	30
734	Olive Green-LT	254	99	212	83	106	41
738	Tan-VY LT	380	149	317	125	158	62
739	Tan-UL VY LT	392	153	327	128	164	64
746	Off White	1242	488	1035	407	518	203
762	Pearl Gray-VY LT	923	362	770	302	385	151
800	Delft Blue-Pale	302	119	252	99	126	50
807	Peacock Blue	115	45	96	38	48	19
809	Delft Blue	144	56	120	47	60	23
813	Blue-LT	153	59	128	50	64	25
822	Beige Gray-LT	567	223	473	186	236	93
832	Golden Olive	337	131	281	110	140	55
833	Golden Olive-LT	119	45	99	38	50	19
926	Gray Green-MD	398	157	332	131	166	65
927	Gray Green-LT	320	126	267	105	134	53
928	Gray Green-VY LT	1004	394	837	329	419	164
930	Antique Blue-DK	250	97	209	81	104	41
935	Avocado Green-DK	331	130	276	108	138	54
943	Bright Green-MD	27	9	23	8	11	4
958	Sea Green-DK	88	34	74	29	37	14
959	Sea Green-MD	335	131	279	110	140	55
964	Sea Green-LT	173	67	144	56	72	28
972	Canary-DK	63	23	53	20	26	10
973	Canary-BRT	9	2	8	2	4	1
991	Aquamarine-DK	36	13	30	11	15	5
3011	Khaki Green-DK	500	196	417	164	209	82
3012	Khaki Green-MD	833	328	695	273	347	137
3013	Khaki Green-LT	398	157	332	131	166	65
3024	Brown Gray-VY LT	1060	416	884	347	442	173
3031	Mocha Brown-VY DK	121	47	101	39	50	20
3032	Mocha Brown-MD	452	176	377	147	188	74
3041	Antique Violet-MD	27	9	23	8	11	4
3045	Yellow Beige-DK	155	59	129	50	65	25
3051	Green Gray-DK	770	302	642	252	321	126
3052	Green Gray-MD	1532	603	1277	503	638	251
3064	Desert Sand	0	2	0	2	0	1
3346	Hunter Green	657	257	548	215	274	107
3721	Shell Pink-DK	18	5	15	5	8	2
3756	Baby Blue-UL VY LT	1579	621	1316	518	658	259
3768	Gray Green-DK	974	382	812	318	406	159
3770	Tawny-VY LT	126	49	105	41	53	20
3774	Desert Sand-VY LT	297	115	248	96	124	48
3778	Terra Cotta-LT	2	2	2	2	1	1
3782	Mocha Brown-LT	360	140	300	117	150	59
3787	Brown Gray-DK	1256	493	1047	411	524	206
3790	Beige Gray-UL DK	634	248	528	207	264	104
3799	Pewter Gray-VY DK	1577	619	1314	516	657	258
3809	Turquoise-VY DK	353	139	294	116	147	58
3810	Turquoise-DK	328	128	273	107	137	53

Copyright (c) 2005-, Golden Kite (Golden K.)

Internet: www.goldenkite.com

e-mail: info@goldenkite.com

3811	Turquoise-VY LT	355	139	296	116	148	58
3814	Aquamarine	32	13	27	11	14	5
3822	Straw-LT	14	5	12	5	6	2
3823	Yellow-UL Pale	610	239	509	200	254	100
3824	Apricot-LT	0	2	0	2	0	1
3841	Baby Blue-Pale	499	196	416	164	208	82
3848	Teal Green-MD	137	52	114	44	57	22
3849	Teal Green-LT	160	63	134	53	67	26
3853	Autumn Gold-DK	20	7	17	6	8	3
3859	Rosewood-LT	13	4	11	3	5	2
3863	Mocha Beige-MD	162	63	135	53	68	26
3865	Winter White	2246	884	1872	737	936	368
ecru	Ecrú	565	221	471	185	236	92

Extended thread usage table.							
DMC	Name	Usage (cm)	Usage (inch)	Usage (cm)	Usage (inch)	Usage (cm)	Usage (inch)
		25		26		27	
224	Shell Pink-VY LT	37	14	35	14	34	13
318	Steel Gray-LT	147	58	141	55	136	53
407	Desert Sand-DK	34	13	33	12	31	12
413	Pewter Gray-DK	69	27	66	26	64	25
414	Steel Gray-DK	91	36	88	35	85	33
420	Hazelnut Brown-DK	32	12	31	12	30	11
452	Shell Gray-MD	60	23	57	22	55	21
500	Blue Green-VY DK	544	214	523	206	504	198
501	Blue Green-DK	30	12	28	11	27	11
502	Blue Green	53	21	51	20	49	19
503	Blue Green-MD	156	61	150	59	145	57
520	Fern Green-DK	336	132	323	127	311	122
524	Fern Green-VY LT	223	88	215	84	207	81
543	Beige Brown-UL VY LT	94	37	91	35	87	34
598	Turquoise-LT	57	22	55	21	53	21
611	Drab Brown	148	58	143	56	137	54
612	Drab Brown-LT	150	58	144	56	139	54
613	Drab Brown-VY LT	295	116	284	111	273	107
640	Beige Gray-VY DK	53	20	51	19	49	19
642	Beige Gray-DK	184	72	177	69	170	67
645	Beaver Gray-VY DK	562	221	541	213	521	205
647	Beaver Gray-MD	292	114	280	110	270	106
648	Beaver Gray-LT	113	44	109	42	105	41
677	Old Gold-VY LT	10	4	10	3	9	3
680	Old Gold-DK	6	2	6	2	5	2
712	Cream	243	96	234	92	225	89
730	Olive Green-VY DK	92	36	89	35	85	33
732	Olive Green	73	29	71	28	68	27
734	Olive Green-LT	102	40	98	38	94	37
738	Tan-VY LT	152	60	146	57	141	55
739	Tan-UL VY LT	157	61	151	59	145	57
746	Off White	497	195	478	188	460	181
762	Pearl Gray-VY LT	369	145	355	139	342	134
800	Delft Blue-Pale	121	48	116	46	112	44
807	Peacock Blue	46	18	44	17	43	17
809	Delft Blue	58	22	55	21	53	21
813	Blue-LT	61	24	59	23	57	22
822	Beige Gray-LT	227	89	218	86	210	83
832	Golden Olive	135	53	129	51	125	49

833	Golden Olive-LT	48	18	46	17	44	17
926	Gray Green-MD	159	63	153	60	147	58
927	Gray Green-LT	128	50	123	48	119	47
928	Gray Green-VY LT	402	158	386	152	372	146
930	Antique Blue-DK	100	39	96	37	93	36
935	Avocado Green-DK	132	52	127	50	123	48
943	Bright Green-MD	11	4	10	3	10	3
958	Sea Green-DK	35	14	34	13	33	13
959	Sea Green-MD	134	53	129	51	124	49
964	Sea Green-LT	69	27	66	26	64	25
972	Canary-DK	25	9	24	9	23	9
973	Canary-BRT	4	1	3	1	3	1
991	Aquamarine-DK	14	5	14	5	13	5
3011	Khaki Green-DK	200	78	192	75	185	73
3012	Khaki Green-MD	333	131	321	126	309	121
3013	Khaki Green-LT	159	63	153	60	147	58
3024	Brown Gray-VY LT	424	166	408	160	393	154
3031	Mocha Brown-VY DK	48	19	46	18	45	17
3032	Mocha Brown-MD	181	71	174	68	167	65
3041	Antique Violet-MD	11	4	10	3	10	3
3045	Yellow Beige-DK	62	24	60	23	57	22
3051	Green Gray-DK	308	121	296	116	285	112
3052	Green Gray-MD	613	241	589	232	567	223
3064	Desert Sand	0	1	0	1	0	1
3346	Hunter Green	263	103	253	99	243	95
3721	Shell Pink-DK	7	2	7	2	7	2
3756	Baby Blue-UL VY LT	631	248	607	239	585	230
3768	Gray Green-DK	390	153	375	147	361	141
3770	Tawny-VY LT	50	19	48	19	47	18
3774	Desert Sand-VY LT	119	46	114	44	110	43
3778	Terra Cotta-LT	1	1	1	1	1	1
3782	Mocha Brown-LT	144	56	138	54	133	52
3787	Brown Gray-DK	503	197	483	190	465	183
3790	Beige Gray-UL DK	253	99	244	96	235	92
3799	Pewter Gray-VY DK	631	248	606	238	584	229
3809	Turquoise-VY DK	141	55	136	53	131	51
3810	Turquoise-DK	131	51	126	49	121	47
3811	Turquoise-VY LT	142	55	136	53	131	51
3814	Aquamarine	13	5	12	5	12	5
3822	Straw-LT	6	2	6	2	5	2
3823	Yellow-UL Pale	244	96	235	92	226	89
3824	Apricot-LT	0	1	0	1	0	1
3841	Baby Blue-Pale	199	78	192	75	185	73
3848	Teal Green-MD	55	21	53	20	51	19
3849	Teal Green-LT	64	25	62	24	59	23
3853	Autumn Gold-DK	8	3	8	3	7	3
3859	Rosewood-LT	5	1	5	1	5	1
3863	Mocha Beige-MD	65	25	62	24	60	23
3865	Winter White	899	354	864	340	832	327
ecru	Ecu	226	89	217	85	209	82

Extended thread usage table.							
DMC	Name	Usage (cm)	Usage (inch)	Usage (cm)	Usage (inch)	Usage (cm)	Usage (inch)
		28		30		32	
224	Shell Pink-VY LT	33	13	31	12	29	11
318	Steel Gray-LT	131	51	122	48	115	45
407	Desert Sand-DK	30	12	28	11	26	10

Copyright (c) 2005-, Golden Kite (Golden K.)

Internet: www.goldenkite.com

e-mail: info@goldenkite.com

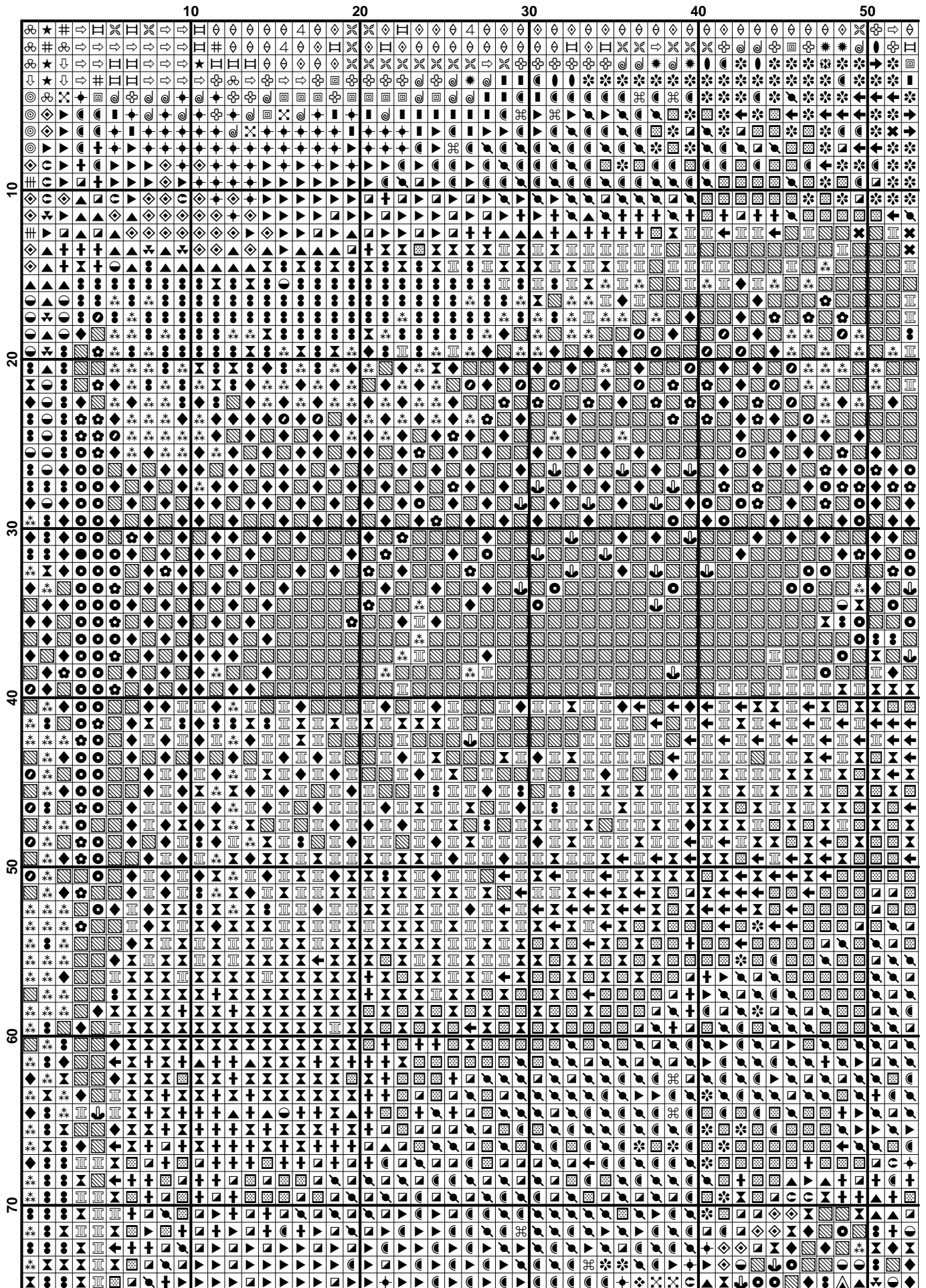
413	Pewter Gray-DK	62	24	58	22	54	21
414	Steel Gray-DK	82	32	76	30	71	28
420	Hazelnut Brown-DK	29	11	27	10	25	10
452	Shell Gray-MD	53	21	50	19	47	18
500	Blue Green-VY DK	486	191	454	178	425	167
501	Blue Green-DK	26	10	25	10	23	9
502	Blue Green	48	19	44	17	42	16
503	Blue Green-MD	140	55	130	51	122	48
520	Fern Green-DK	300	118	280	110	262	103
524	Fern Green-VY LT	199	78	186	73	174	69
543	Beige Brown-UL VY LT	84	33	79	31	74	29
598	Turquoise-LT	51	20	47	19	44	17
611	Drab Brown	132	52	124	49	116	46
612	Drab Brown-LT	134	52	125	49	117	46
613	Drab Brown-VY LT	264	104	246	97	231	91
640	Beige Gray-VY DK	47	18	44	17	41	16
642	Beige Gray-DK	164	64	153	60	143	56
645	Beaver Gray-VY DK	502	197	469	184	439	173
647	Beaver Gray-MD	260	102	243	95	228	89
648	Beaver Gray-LT	101	39	94	37	88	34
677	Old Gold-VY LT	9	3	8	3	8	3
680	Old Gold-DK	5	2	5	2	5	2
712	Cream	217	86	203	80	190	75
730	Olive Green-VY DK	82	32	77	30	72	28
732	Olive Green	66	26	61	24	57	23
734	Olive Green-LT	91	35	85	33	79	31
738	Tan-VY LT	136	53	127	50	119	47
739	Tan-UL VY LT	140	55	131	51	123	48
746	Off White	444	174	414	163	388	152
762	Pearl Gray-VY LT	330	129	308	121	289	113
800	Delft Blue-Pale	108	42	101	40	95	37
807	Peacock Blue	41	16	38	15	36	14
809	Delft Blue	51	20	48	19	45	17
813	Blue-LT	55	21	51	20	48	19
822	Beige Gray-LT	203	80	189	74	177	70
832	Golden Olive	120	47	112	44	105	41
833	Golden Olive-LT	42	16	40	15	37	14
926	Gray Green-MD	142	56	133	52	124	49
927	Gray Green-LT	114	45	107	42	100	39
928	Gray Green-VY LT	359	141	335	131	314	123
930	Antique Blue-DK	89	35	83	32	78	30
935	Avocado Green-DK	118	46	110	43	104	41
943	Bright Green-MD	10	3	9	3	8	3
958	Sea Green-DK	32	12	29	11	28	11
959	Sea Green-MD	120	47	112	44	105	41
964	Sea Green-LT	62	24	58	22	54	21
972	Canary-DK	23	8	21	8	20	7
973	Canary-BRT	3	1	3	1	3	1
991	Aquamarine-DK	13	5	12	4	11	4
3011	Khaki Green-DK	179	70	167	65	156	61
3012	Khaki Green-MD	298	117	278	109	260	102
3013	Khaki Green-LT	142	56	133	52	124	49
3024	Brown Gray-VY LT	379	149	353	139	331	130
3031	Mocha Brown-VY DK	43	17	40	16	38	15
3032	Mocha Brown-MD	161	63	151	59	141	55
3041	Antique Violet-MD	10	3	9	3	8	3
3045	Yellow Beige-DK	55	21	52	20	48	19
3051	Green Gray-DK	275	108	257	101	241	95
3052	Green Gray-MD	547	215	511	201	479	188

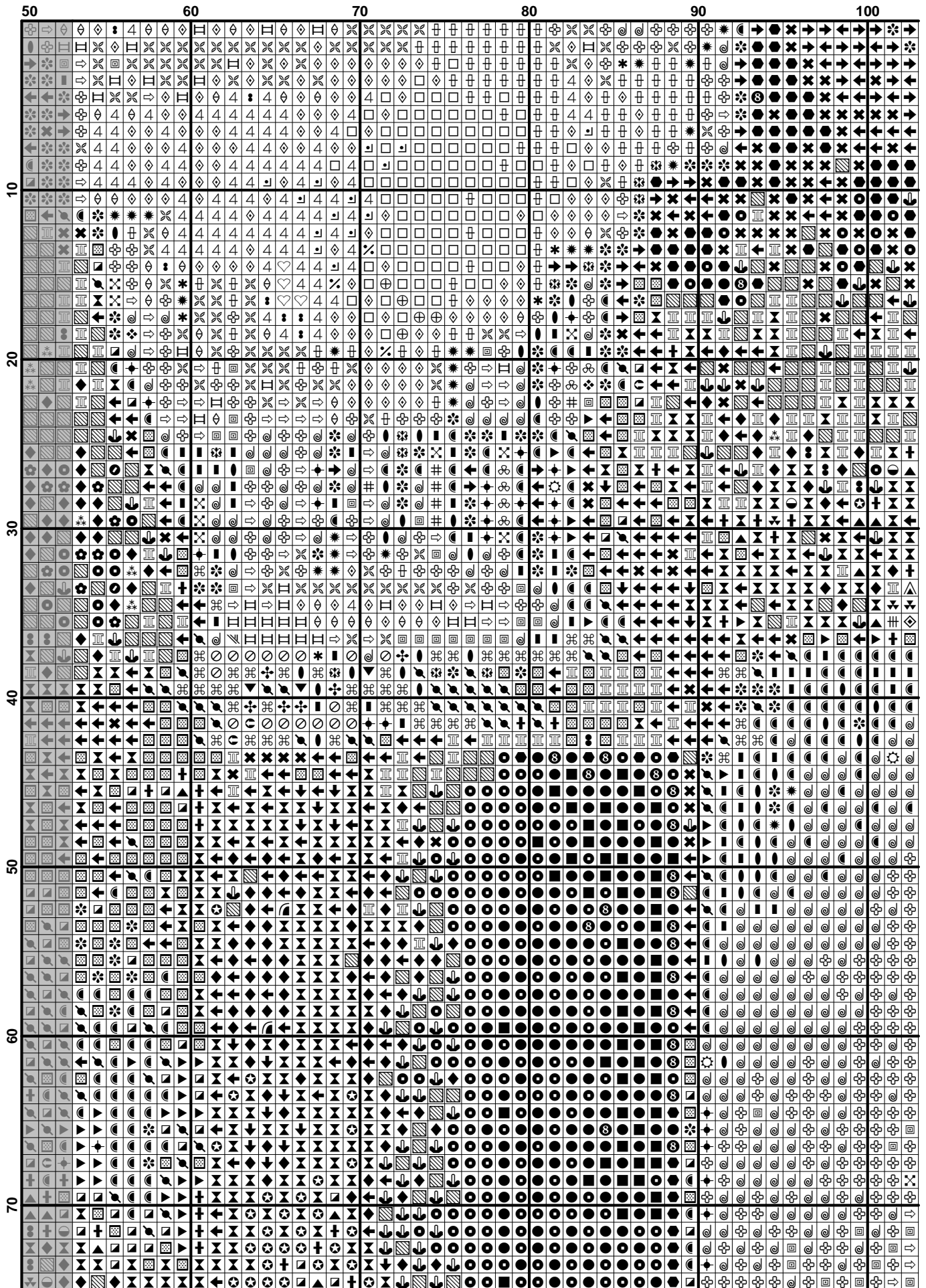
Copyright (c) 2005-, Golden Kite (Golden K.)

Internet: www.goldenkite.com

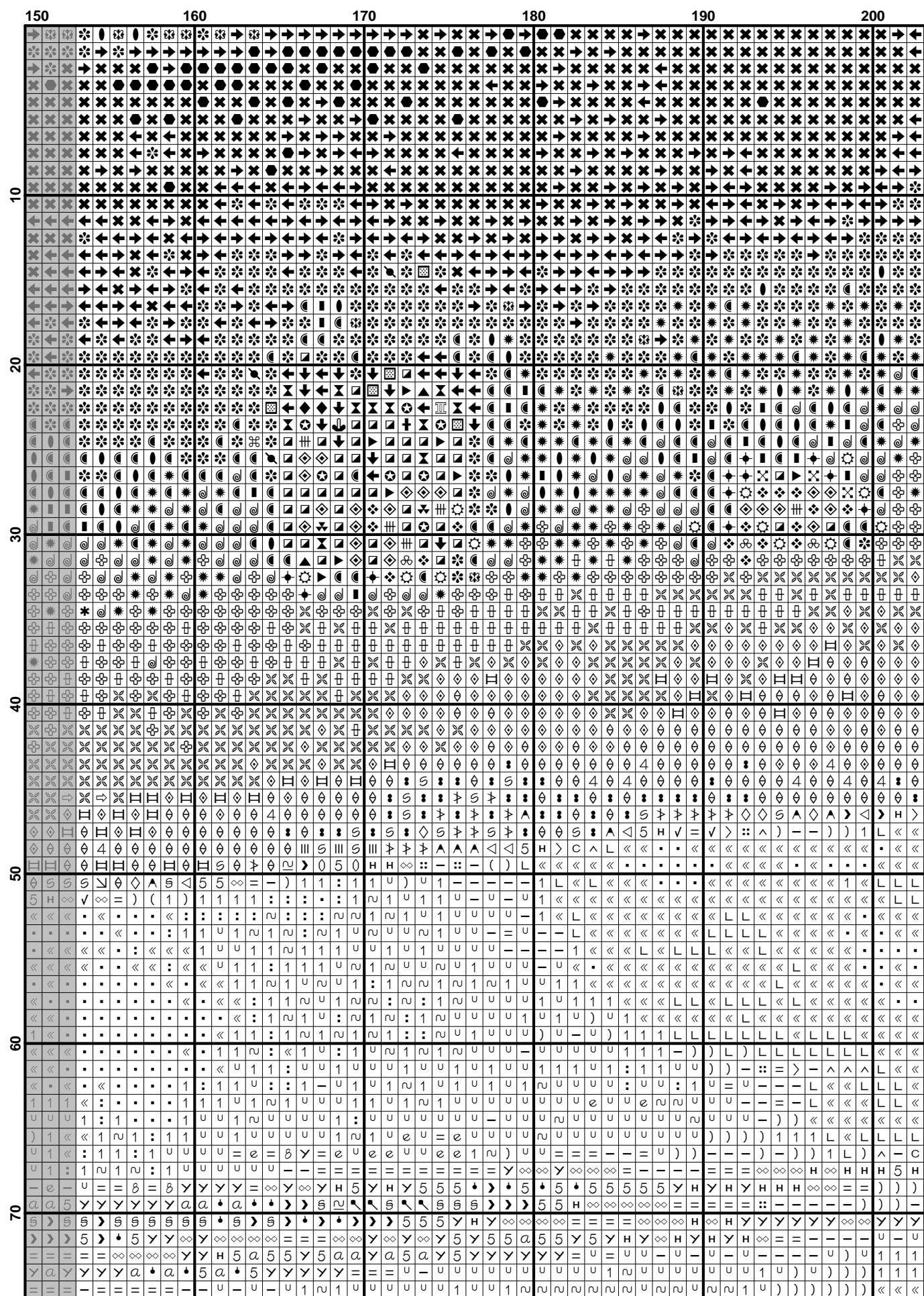
e-mail: info@goldenkite.com

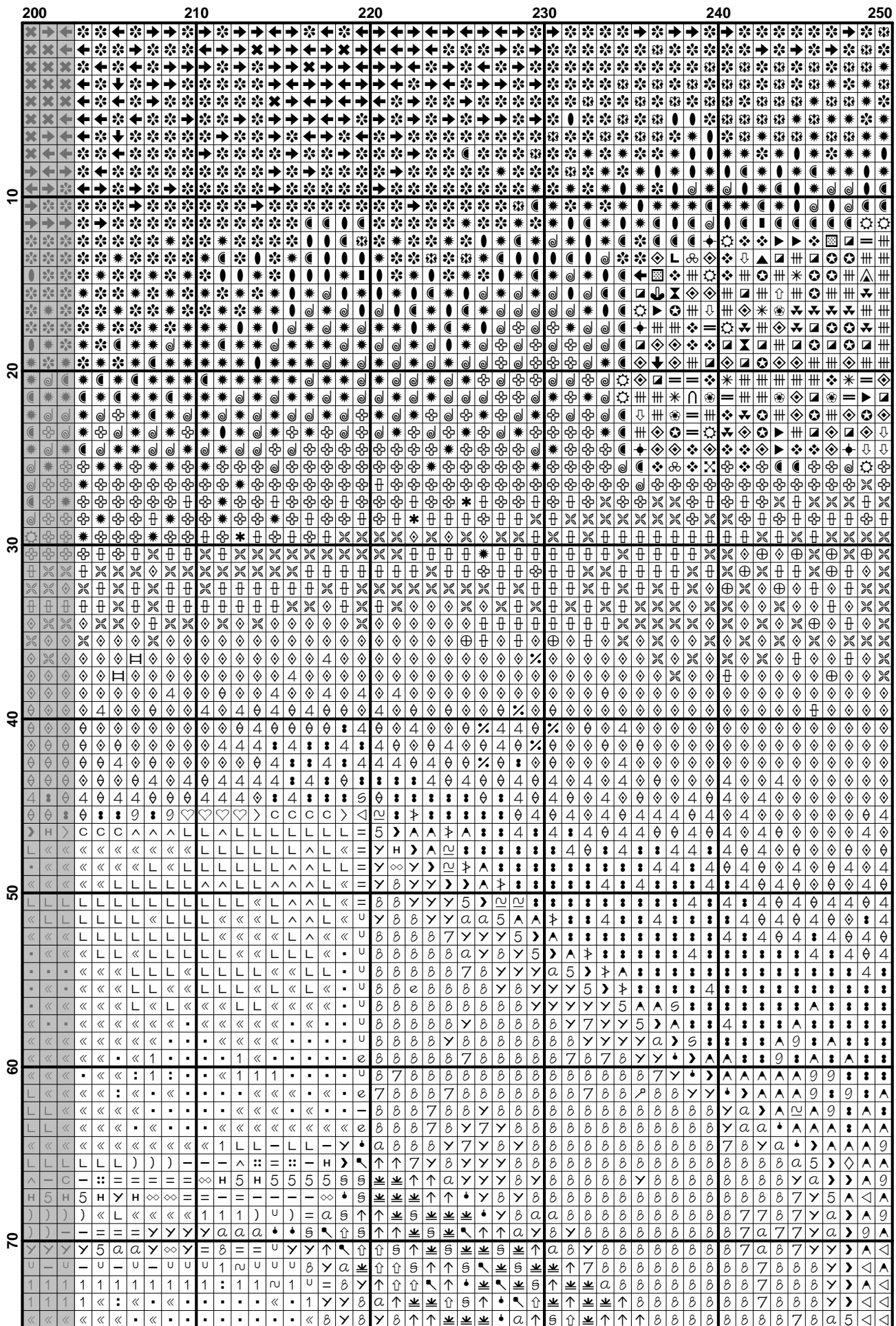
3064	Desert Sand	0	1	0	1	0	1
3346	Hunter Green	235	92	219	86	205	80
3721	Shell Pink-DK	6	2	6	2	6	2
3756	Baby Blue-UL VY LT	564	222	526	207	493	194
3768	Gray Green-DK	348	136	325	127	304	119
3770	Tawny-VY LT	45	17	42	16	39	15
3774	Desert Sand-VY LT	106	41	99	38	93	36
3778	Terra Cotta-LT	1	1	1	1	1	1
3782	Mocha Brown-LT	129	50	120	47	113	44
3787	Brown Gray-DK	449	176	419	164	393	154
3790	Beige Gray-UL DK	226	89	211	83	198	78
3799	Pewter Gray-VY DK	563	221	526	206	493	194
3809	Turquoise-VY DK	126	50	118	46	110	43
3810	Turquoise-DK	117	46	109	43	102	40
3811	Turquoise-VY LT	127	50	118	46	111	43
3814	Aquamarine	12	5	11	4	10	4
3822	Straw-LT	5	2	5	2	5	2
3823	Yellow-UL Pale	218	86	203	80	191	75
3824	Apricot-LT	0	1	0	1	0	1
3841	Baby Blue-Pale	178	70	166	65	156	61
3848	Teal Green-MD	49	19	46	17	43	16
3849	Teal Green-LT	57	23	53	21	50	20
3853	Autumn Gold-DK	7	3	7	2	6	2
3859	Rosewood-LT	5	1	4	1	4	1
3863	Mocha Beige-MD	58	23	54	21	51	20
3865	Winter White	802	316	749	295	702	276
ecru	Ecru	202	79	188	74	177	69

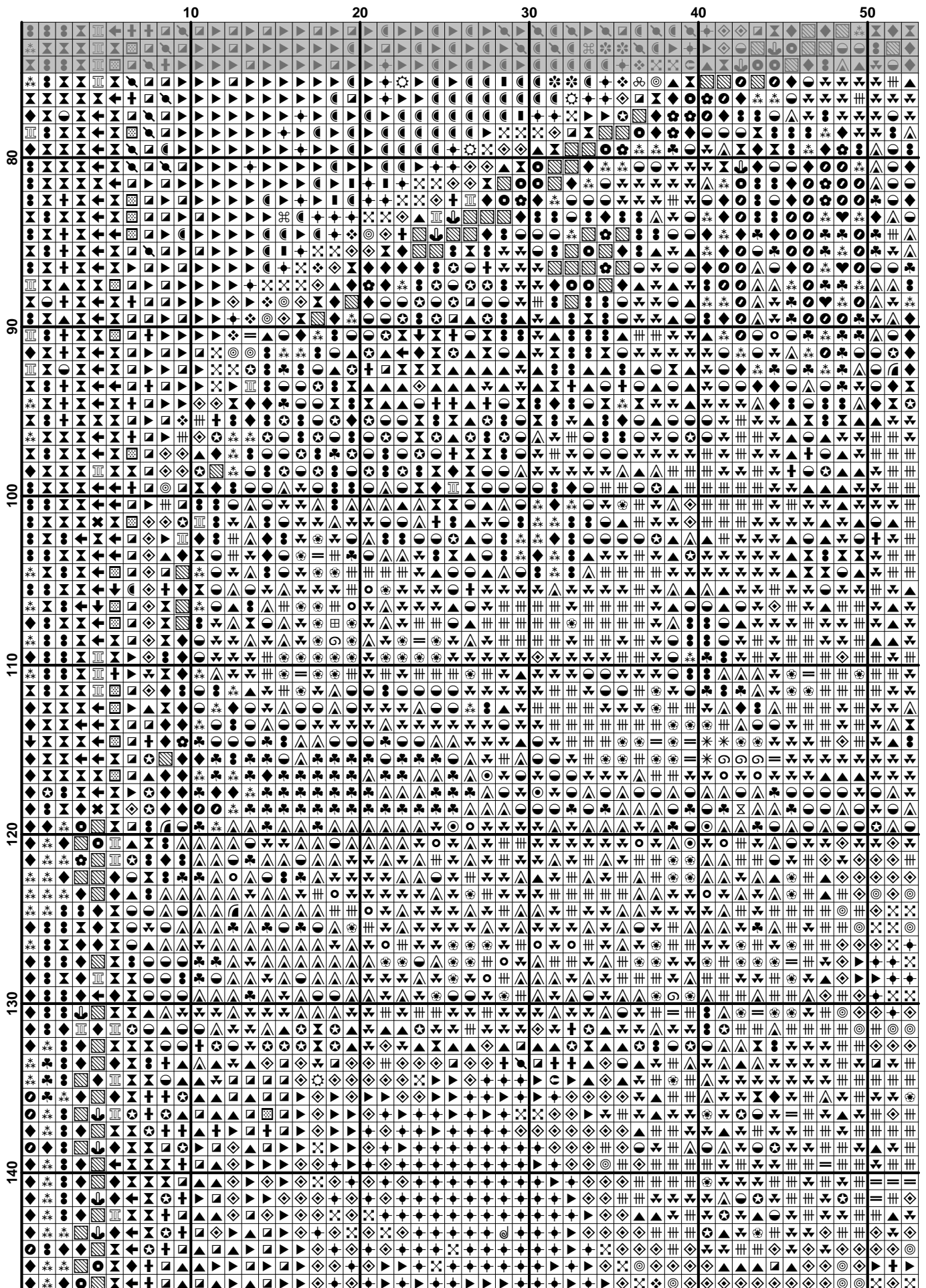


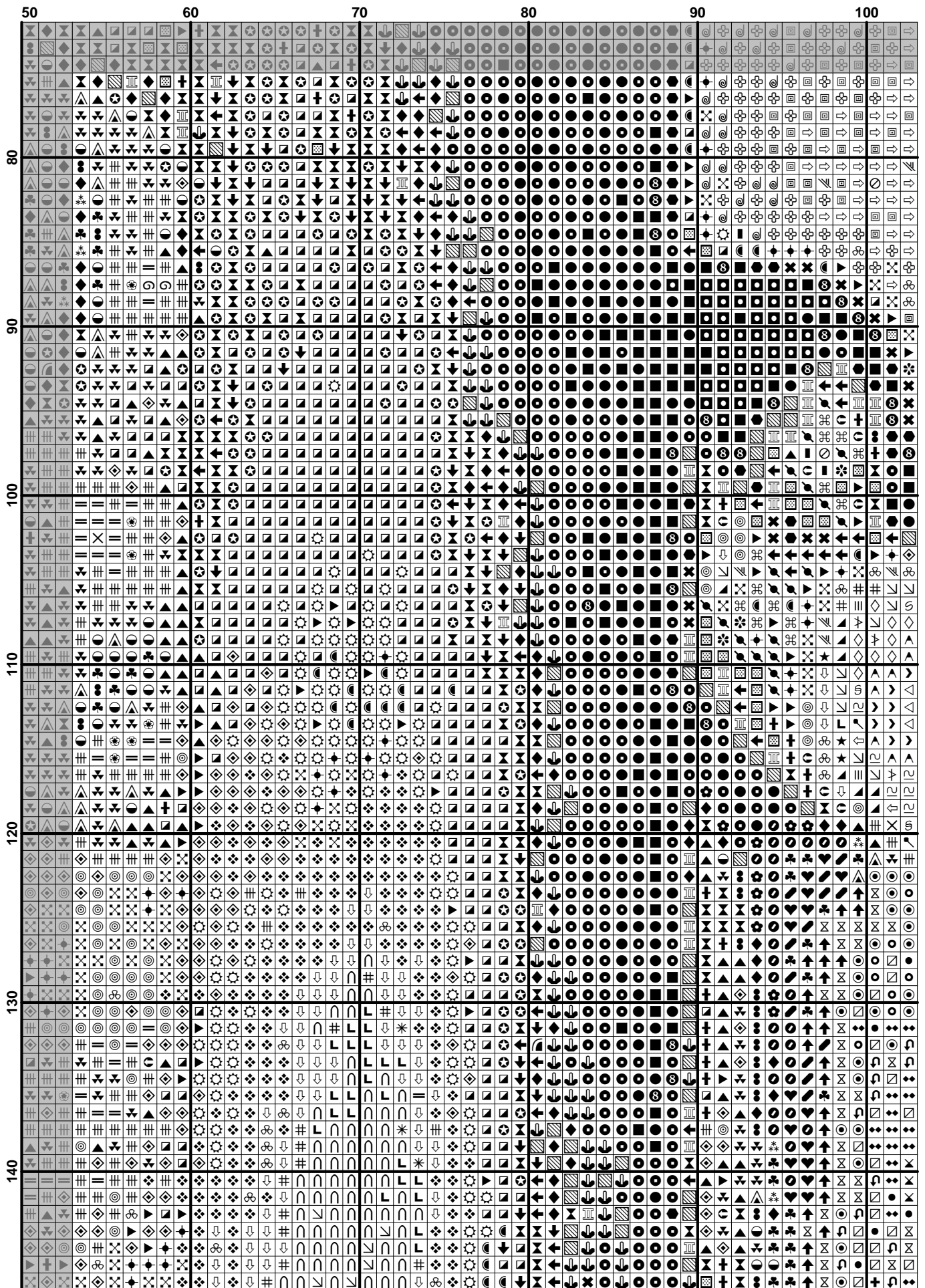








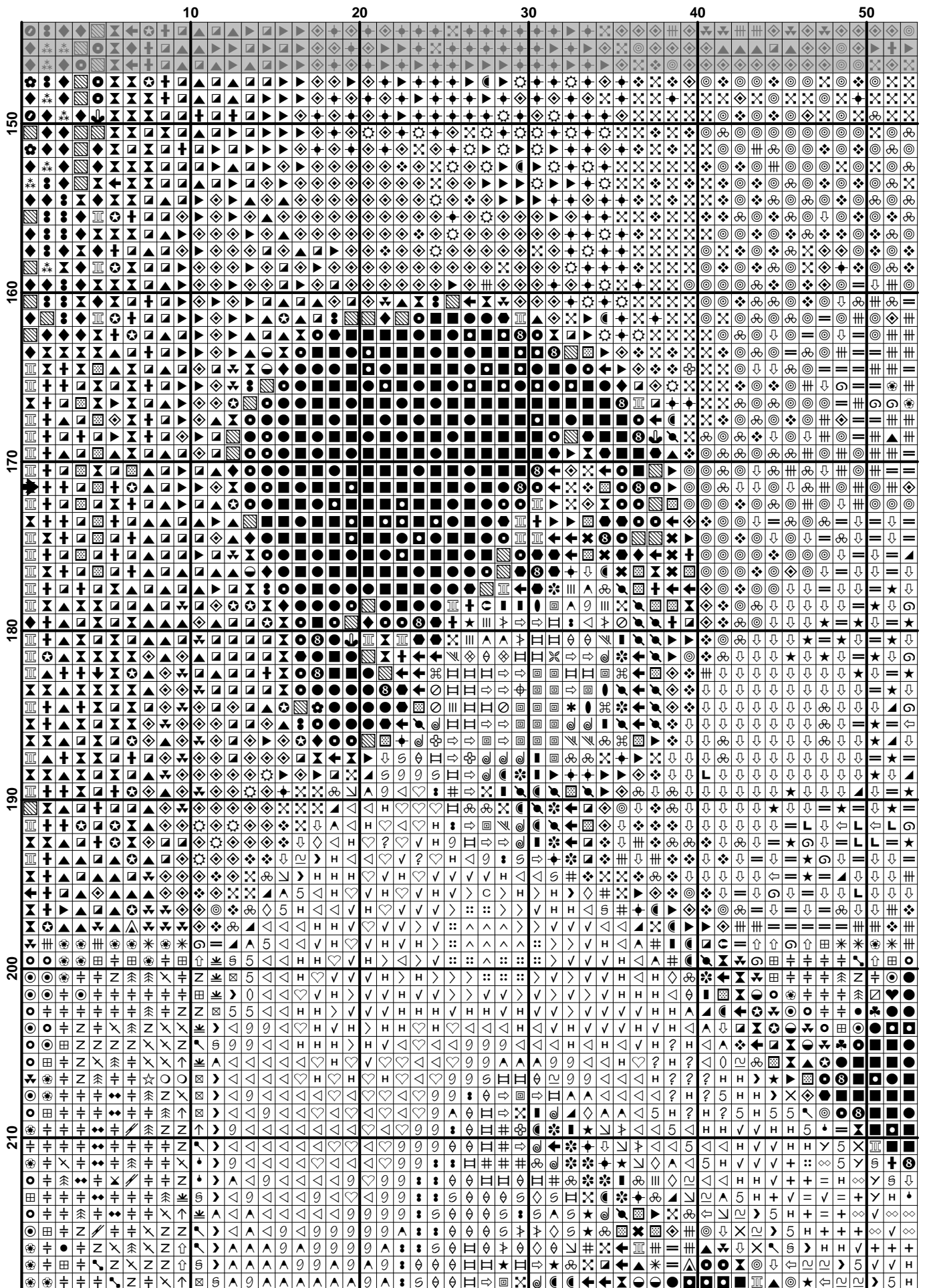




	100	110	120	130	140	150
80
90
100
110
120
130
140
150

[illegible]

(15)



This image displays a large grid of 100 columns and 210 rows of various symbols and patterns. The grid is organized into sections labeled 150, 160, 170, 180, 190, and 200. Each section contains a variety of symbols, including geometric shapes, letters, numbers, and abstract patterns. The symbols are arranged in a way that suggests a systematic or sequential order, possibly representing a data set or a collection of visual elements. The grid is divided into six main horizontal sections, each with a label on the left side. The symbols within each section are arranged in a grid-like fashion, with some sections showing more complex patterns than others. The overall layout is clean and organized, with clear labels for each section.

	100	110	120	130	140	150
150						
160						
170						
180						
190						
200						
210						

	150	160	170	180	190	200
150						
160						
170						
180						
190						
200						
210						

(20)

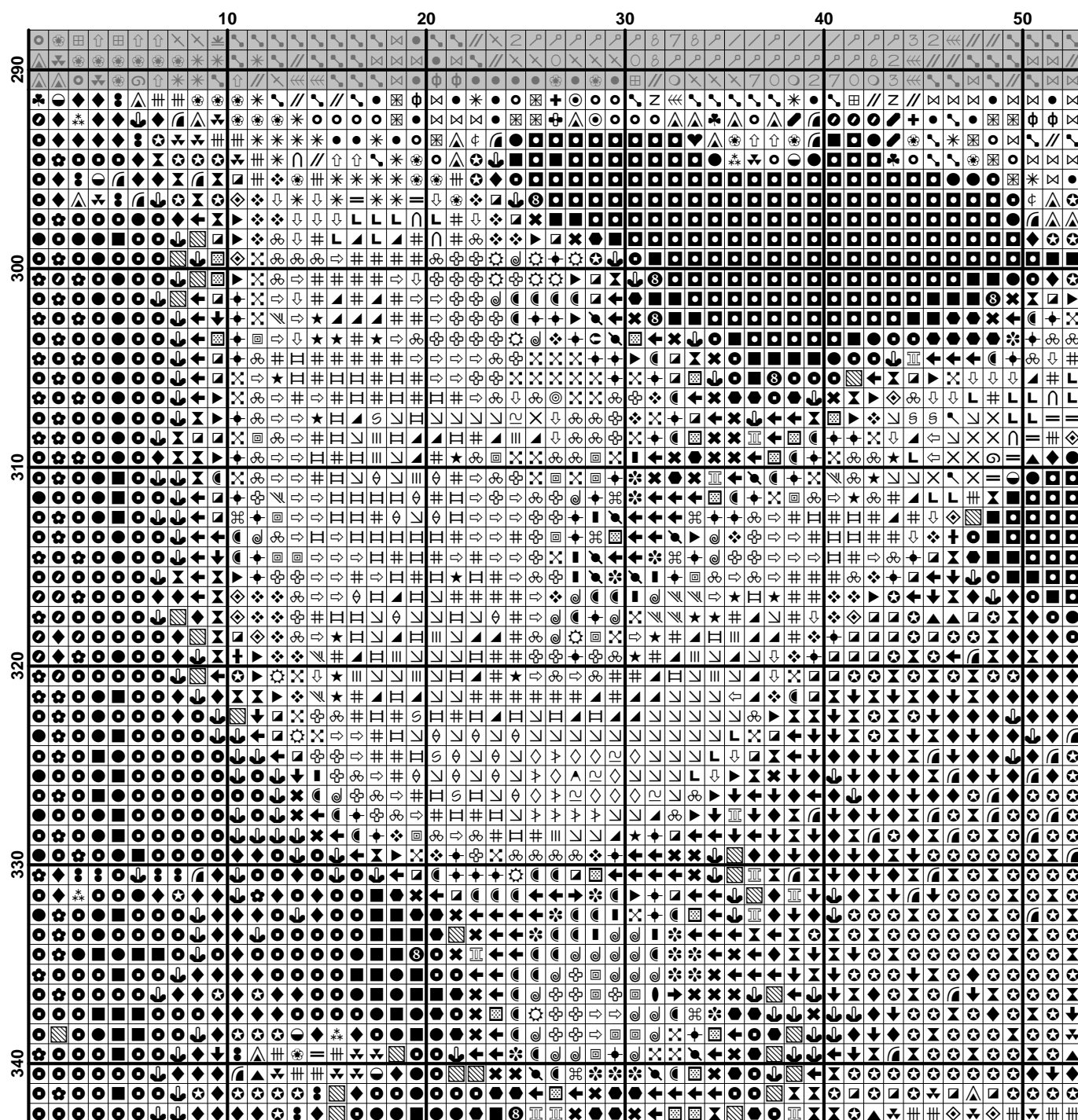
	10										20										30										40										50									
220																																																		
230																																																		
240																																																		
250																																																		
260																																																		
270																																																		
280																																																		
290																																																		

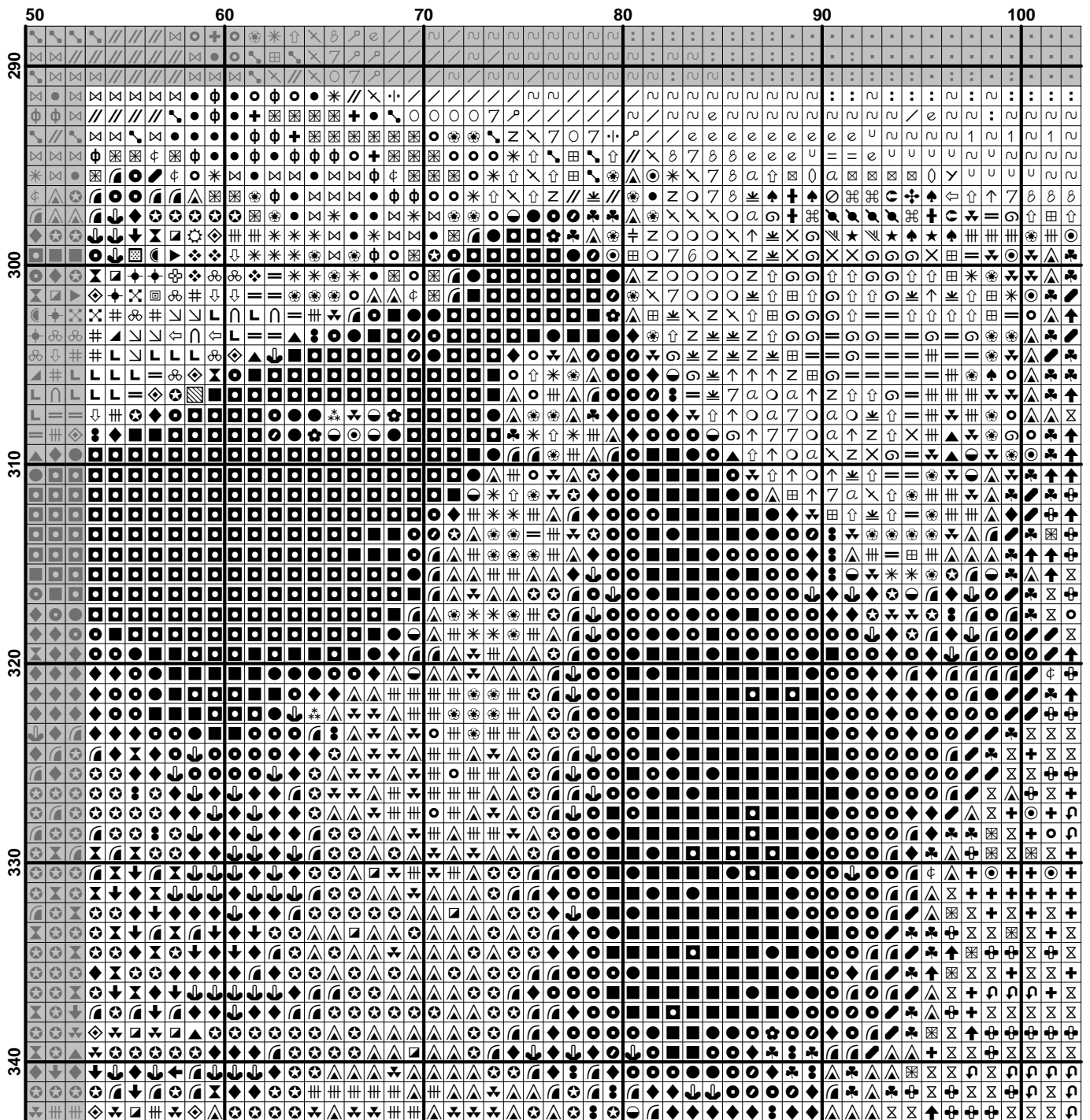
	50	60	70	80	90	100
220	+	+	+	+	+	+
230	+	+	+	+	+	+
240	+	+	+	+	+	+
250	+	+	+	+	+	+
260	+	+	+	+	+	+
270	+	+	+	+	+	+
280	+	+	+	+	+	+
290	+	+	+	+	+	+

$$(23) \quad \mathcal{L}(\mathcal{A}) = \mathcal{L}(\mathcal{B}) \quad (24)$$

$$(24) \quad \mathcal{L}(\mathcal{A}) = \mathcal{L}(\mathcal{B}) \quad (25)$$

(25)





	100	110	120	130	140	150
290
300
310
320
330
340

[illegible]

	200	210	220	230	240	250
290
300
310
320
330
340