

A MUST BASIC DRESS FOR YOUR WARDROBE. EASY TO MAKE AND WEAR. LAYERED OVER A PETTICOAT, CRINOLINE OR BLOOMERS. COMPLIMENTARY PATTERN

XS ... BUST 32-36"
S.... BUST 36-40"
M... BUST 40-44"
ML BUST 44"-46"
L ... 46-48"



Materials { Use Any Fabric }

Note on Fabric Choice: Linen for a soft romantic look, crisp cotton print for a sweet summer dress, silk for a dressier version, and cotton voile for a little layering fun. Use solid or a favorite print. This dress is a basic necessity for any wardrobe.

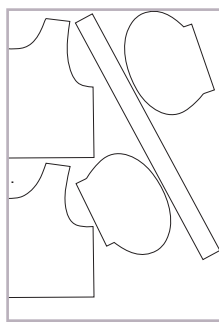
FABRIC FOR 44" OR 54" WIDE
BODICE XS S M ML
XS, S ... 3/4 YD
M,ML,L... 1.25" YDS

SKIRT:FOR ABOVE THE KNEE..... 7/8YD
BELOW THE KNEE 1.25 YDS
MID CALF LENGTH 1.5 YDS

Pattern Preparation

SIMPLY PRINT OUT THIS PDF DOWNLOAD PATTERN ON LETTER SIZE PAPER (8.5x11 IN US OR EURO SIZE)
Tape all the join lines together. It's that simple. For more info see instructions online at www.sewtinagivens.com
ONCE ALL TAPED TOGETHER SELECT THE SIZE YOU WISH TO MAKE,
SEE OUR SIZE CHART AND CUT OUT YOUR PAPER PATTERN PIECES.

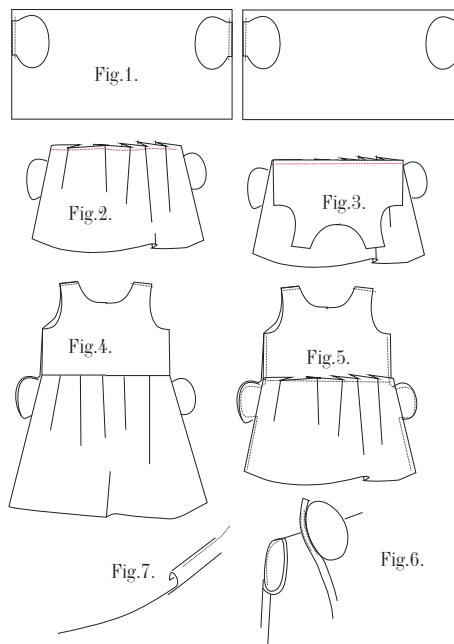
tinga givens™



* CUTTING

- **Bodice** - cut back and front on fold, and 4 pockets, cut 2" wide bias strips (see diagram) you will need a total of about 55", we cut two strips as shown.
- **Skirt**: Skirt can be any of 3 lengths - above the knee, below the knee or mid-calf.
- **Skirt** - For the skirt cut off two pieces of the fabric - the width of the fabric as follows.

- ABOVE THE KNEE cut two widths 15"
- BELOW THE KNEE cut two widths 22"
- MIDCALF cut two widths 26"



Sewing Instructions

NOTE: ALL SEAMS ARE 3/8"
UNLESS OTHERWISE STATED!

- Pin pockets as shown on either side of the skirt pieces. Position the top edge of the pocket 4" from the top edge of the skirt piece (right side of the fabric to right side of the fabric). Pin in place. Stitch in place. Flip pocket over and press seams.
- Mark 5 even points along the top edge of the skirt panels, and make 5 deep pleats as shown in fig.2.
- To do this fold the fabric at each point, then mark about 3" and fold the pleat down, pin.
- THE PLEATED TOP EDGE OF THE SKIRT = THE BOTTOM EDGE OF THE BODICE PIECES. Baste stitch the pleats in place.
- Place the back bodice piece onto the top skirt edge, right sides facing as in fig.3. Pin and stitch in place.
- Repeat for the front bodice piece and skirt. Press.
- We are going to FRENCH SEAM the shoulder seams. See tips and glossary. French seaming is easy, simply place garment right sides OUT, and stitch the shoulder seams as in fig.4, THEN turn the garment inside out and stitch shoulder seams again, this encases the raw seam allowance for a nice clean finish.
- Sew the side seams of the dress by placing the dress inside out. Pin under the arms, and down the sides, match the pockets and continue to the hem.
- Hemming the dress is simple, just roll the fabric 1/4" onto the wrong side of the fabric and press, then roll again 1" and press. Stitch hem all the way around.
- Binding Arms and Neckline: two ways:
 - RAW EDGE BINDING - can use for linen or crisp cotton
 - To do so, fold the binding strips in half lengthwise right sides facing outward and press.
 - Place the folded binding onto the raw edge of the neckline and pin the binding onto the dress. The binding should cover the raw edges of the dress. Stitch around the binding in place. When laundered trim off excess threads.
 - FINISHED BINDING - for a more finished look use this method. Fold one short edge of the binding 1/2" onto the wrong side of the fabric and press. Place this center back on the dress neck; and pin the binding along the neck edge all the way around. Overlap where you started and trim off excess binding. Overlap should be 1". Stitch binding in place around neckline. Press. And fold the binding 1/4" onto the wrong side of the binding fabric, and then roll this folded edge over the raw seam allowance. Stitch.
 - TIP: When stitching binding down, stitch just past the binding seam for a professional finish - the stitches should be below the binding on the dress.