

# BLOOM *Dress*

TGP-A4023

WWW.SEWTINAGIVENS.COM



tina givens™

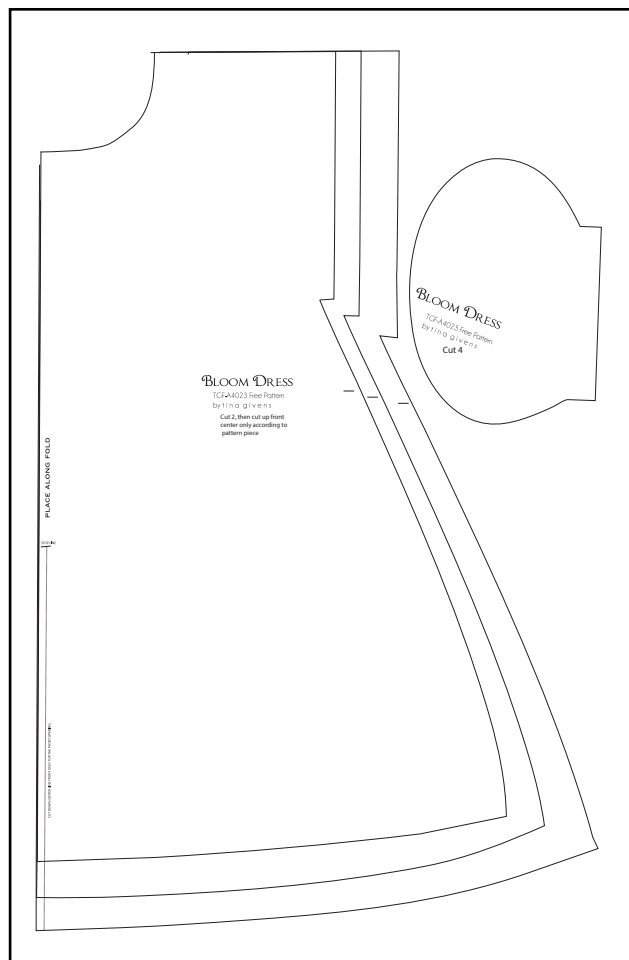
*Sew On*

YOU HAVE DOWNLOADED this perfect sewing pattern by Tina Givens Design for personal purposes. No part of this pattern should be duplicated or reproduced for any reason. We want you to create this garment for your own personal use. Do not share this sewing pattern with others. This is the honor code of Sew Tina Givens and Tina Givens Design.

A THING OF BEAUTY IS A JOY  
FOREVER; IT'S LOVELINESS  
INCREASES; IT WILL NEVER PASS  
INTO NOTHINGNESS.

JOHN KEATS

All designs and art © Tina Givens. No part of this product may be reproduced in any form. "All designs, art, photography and images are protected by federal copyright law. Designs are not to be reproduced for commercial sale. All rights are reserved.



WWW.SEWTINAGIVENS.COM  
QUESTIONS 919.848.9400  
OR EMAIL US AT INFO@TINAGIVENS.COM

---

--- F A B R I C ---

WIDTH OF FABRIC 54" LINEN  
OR COTTON VOILE

SMALL ... 2-1/3 YDS  
MEDIUM... 2-3/8 YDS  
LARGE ... 2-5/8 YDS

## SIZING

S.... 2-8 (BUST UP TO 44")

M.... 12-16" ... 48-50"

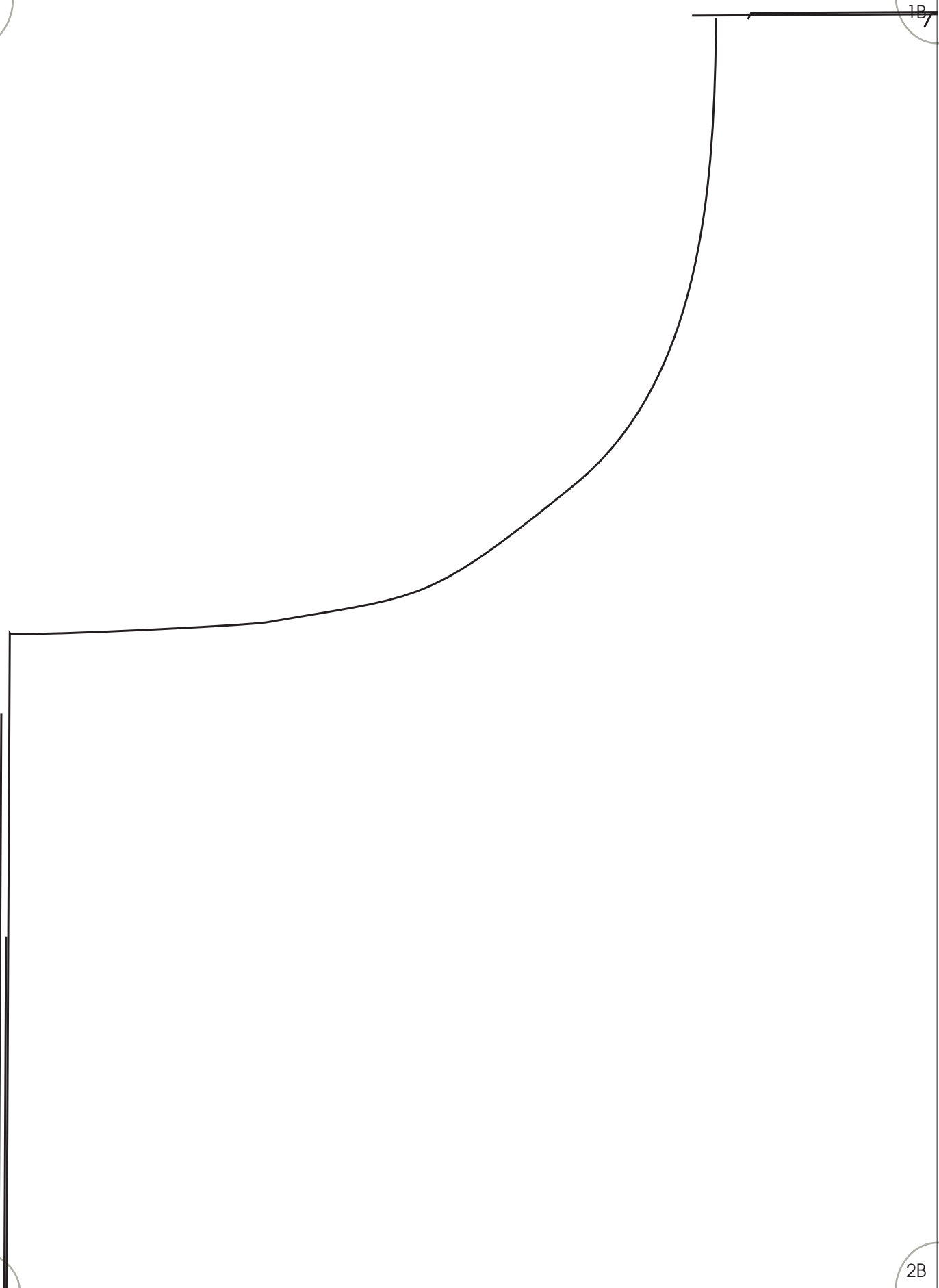
L .... 18-20 ....60"

1A

1B

2A

2B



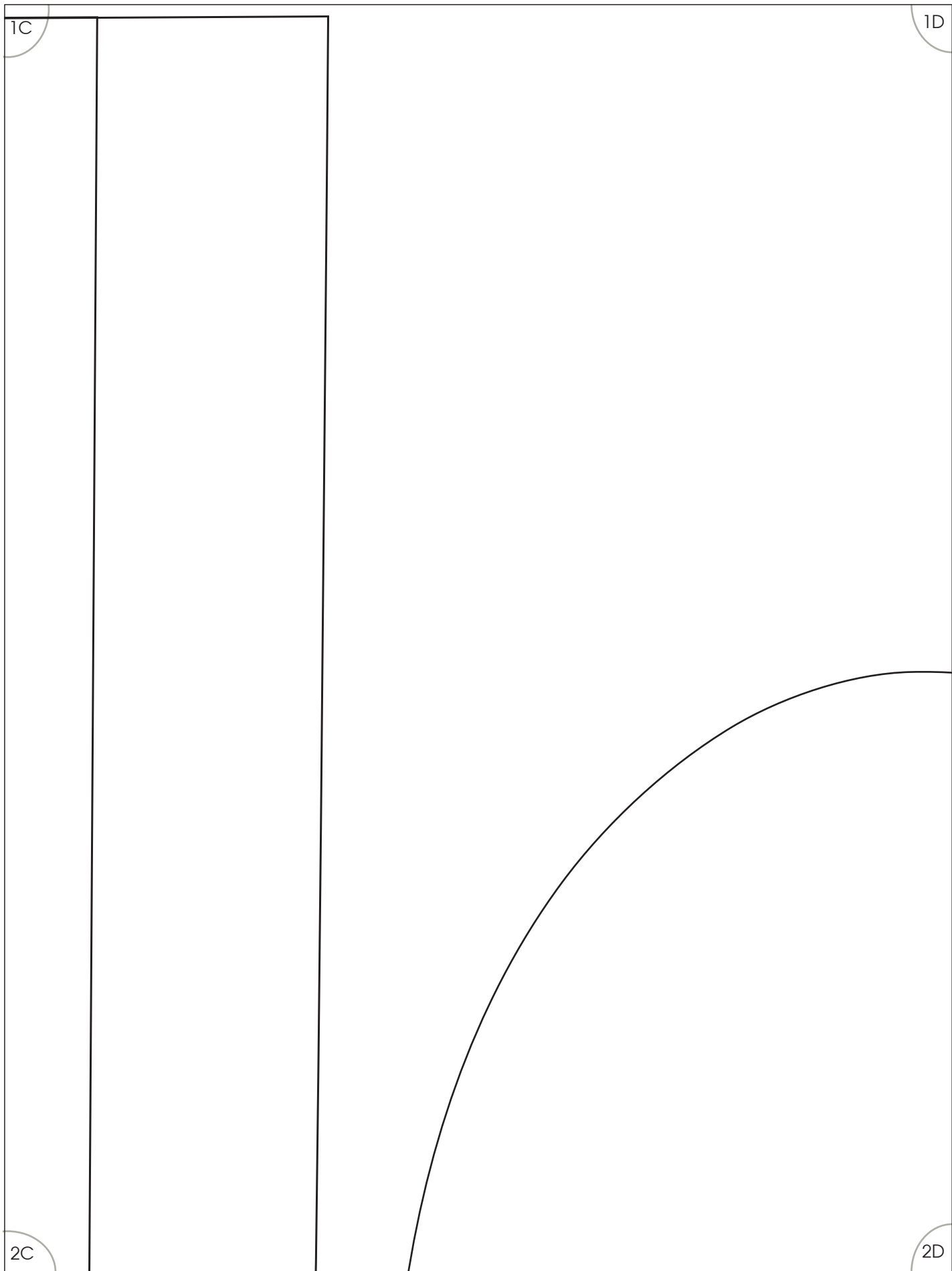
1B

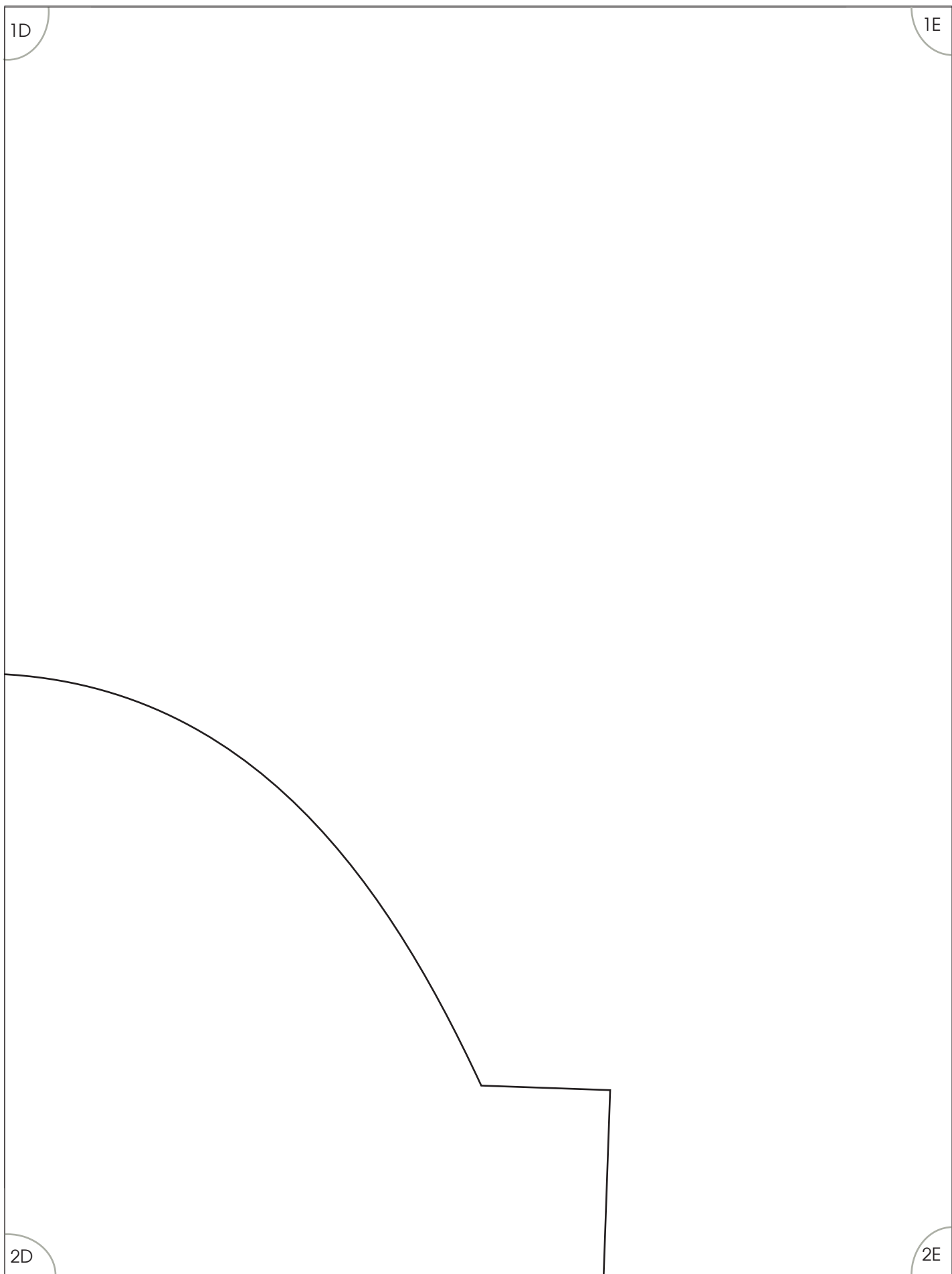
1C

TEST MEASUREMENT BOX  
3"x3"  
OR  
7.62CMX7.62CM

2B

2C





1D

1E

2D

2E

2A

2B

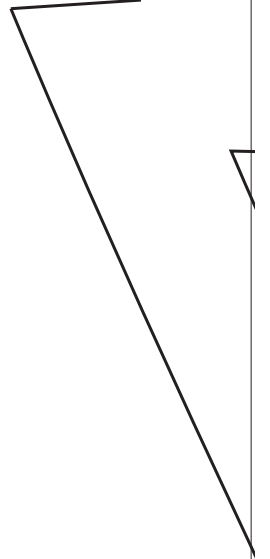
**G FOLD**

3A

3B

2B

2C



# BLOOM DRESS

TGF-A4023 Free Pattern

by t i n a g i v e n s

**Cut 2, then cut up front  
center only according to  
pattern piece**

3B

3C

2C

2D

# BLOOM DRESS

TCF-A4023 Free Pattern  
by tina givens

**Cut 4**

POCKET PLACEMENT

3C

3D

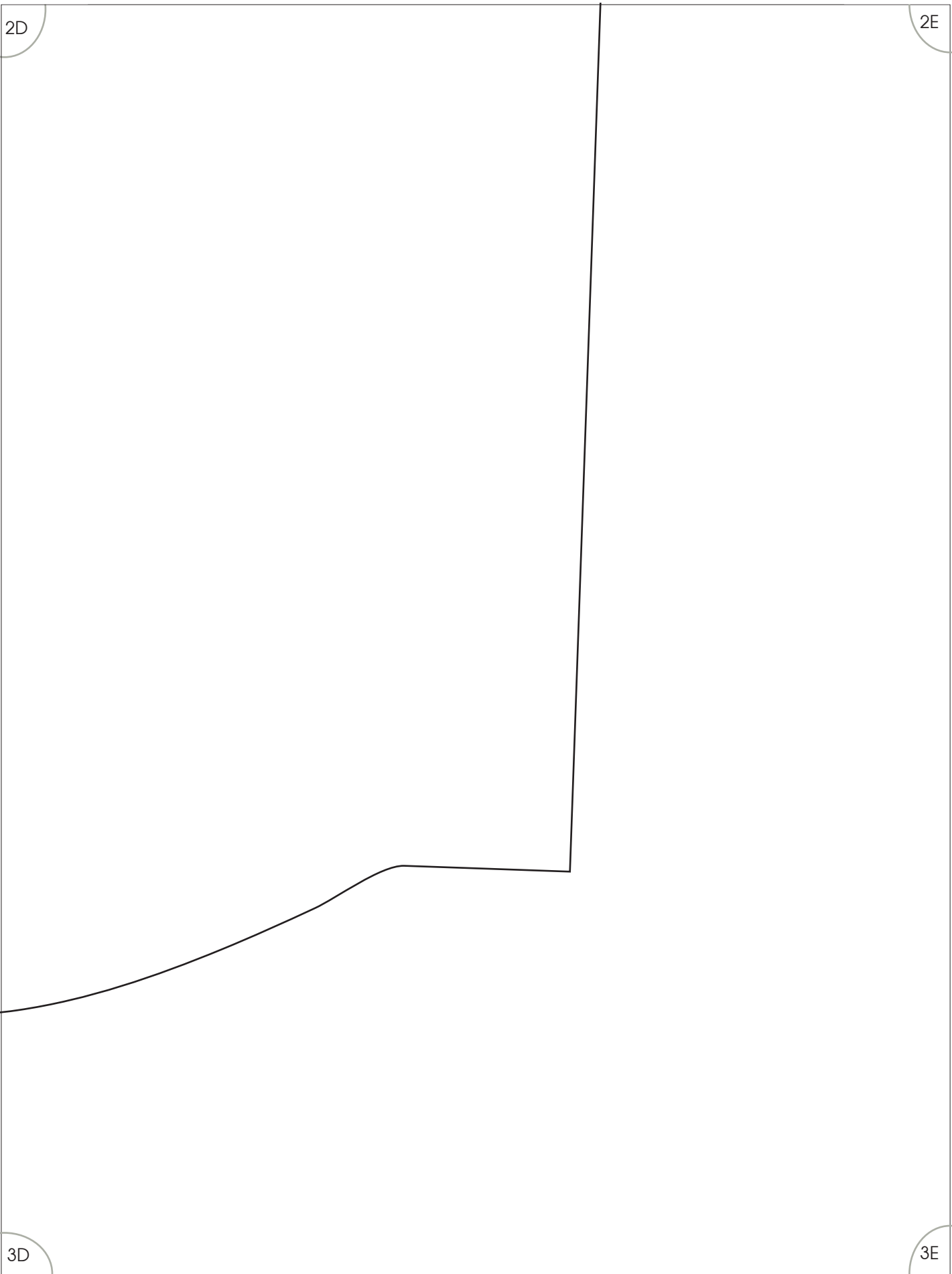


2D

2E

3D

3E

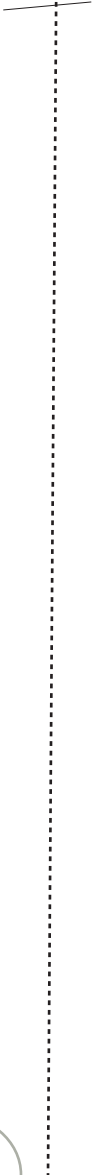


3A

3B

**PLACE ALONG**

STOP LINE



4A

4B

3B

3C

BLOOM *Dress*

TGP-A4023



tina givens™

4B

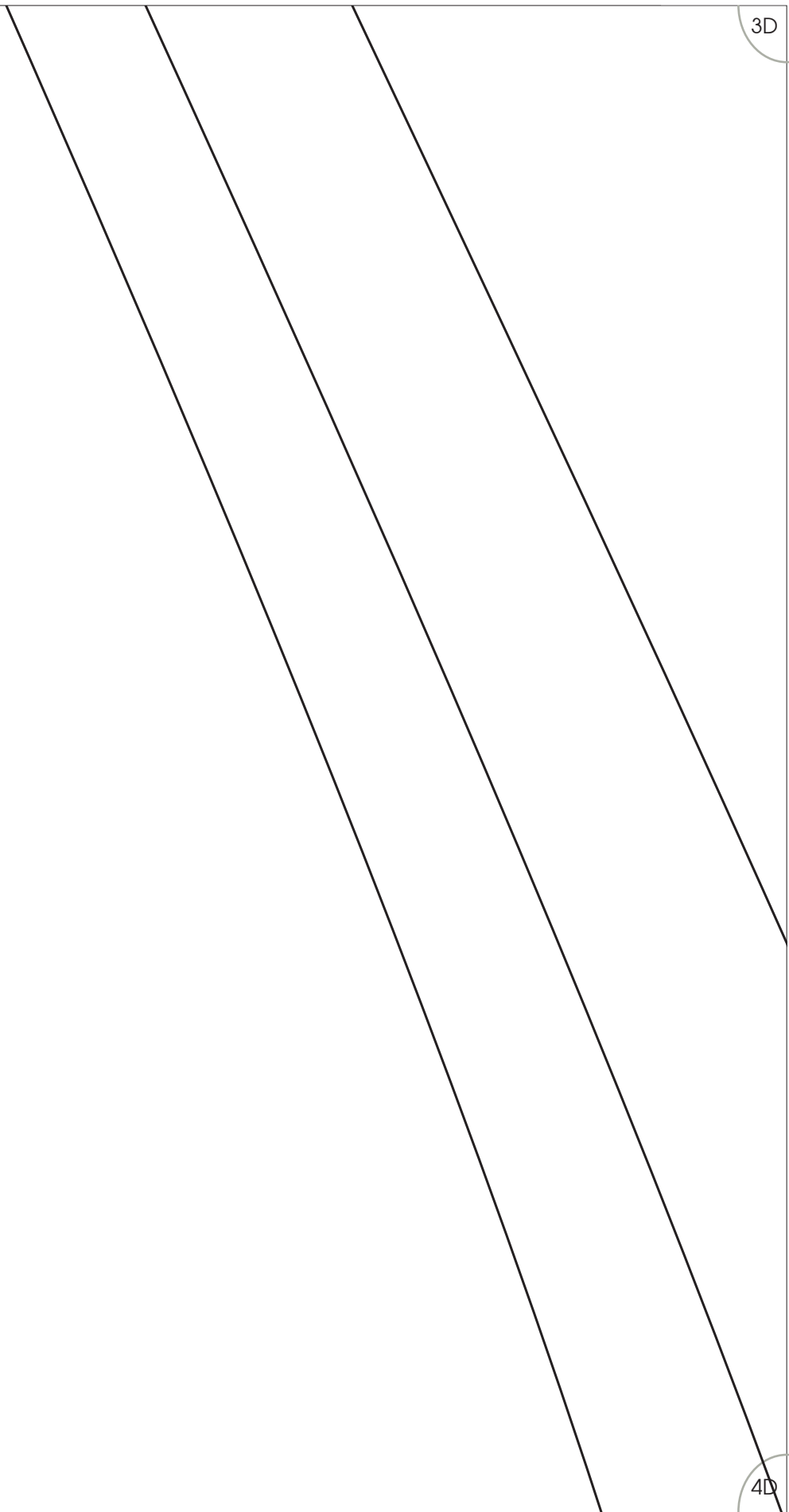
4C

3C

3D

4C

4D

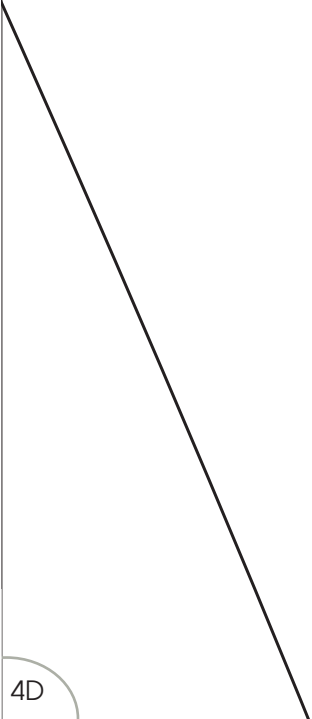


3D

3E

4D

4E



4A

4B

CUT DOWN CENTER LINE FRONT ONLY FOR THE FRONT OPENING.

5A

5B

4B

4C

5B

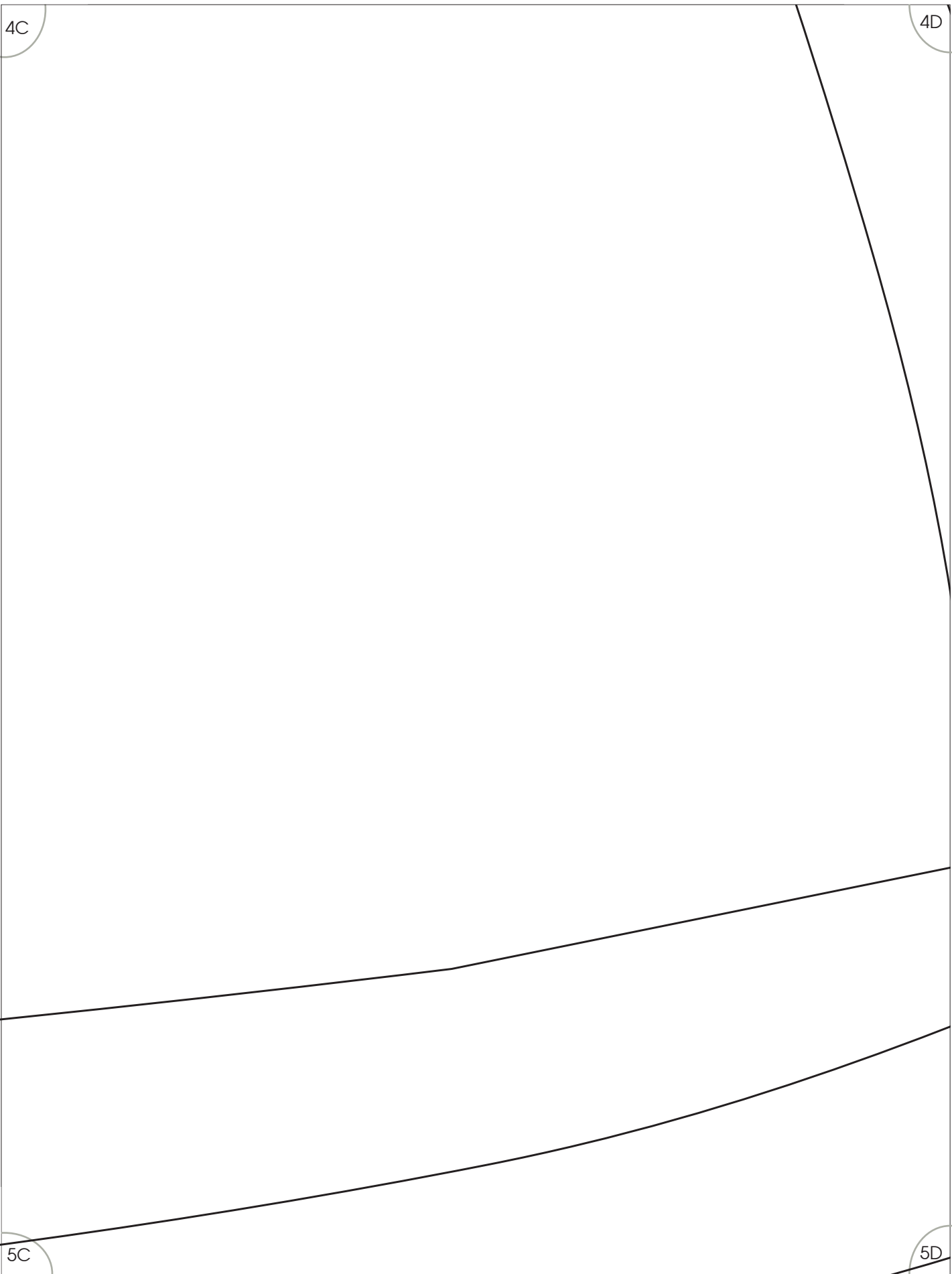
5C

4C

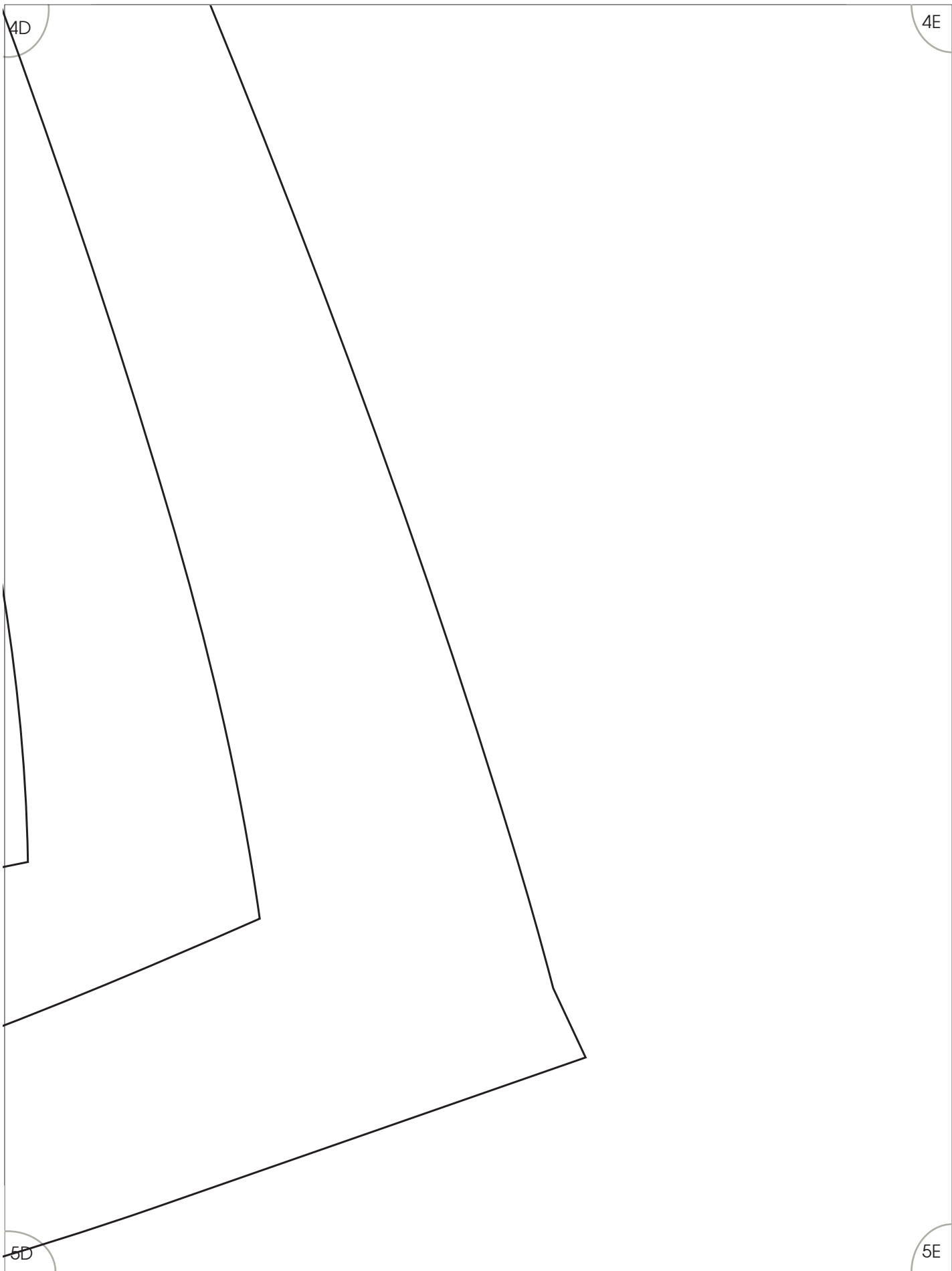
4D

5C

5D







5A

5B

BLOOM *Dress*

TGP-A4023



tina givens™

6A

6B

5B

5C

6B

6C

